

# A review of nutrition and dietary interventions in oncology

SAGE Open Medicine

Volume 8: 1–16

© The Author(s) 2020

Article reuse guidelines:

[sagepub.com/journals-permissions](https://sagepub.com/journals-permissions)

DOI: 10.1177/2050312120926877

[journals.sagepub.com/home/smo](https://journals.sagepub.com/home/smo)

Ashley Gray<sup>1</sup> , Brian N Dang<sup>2</sup>, Theodore B Moore<sup>1</sup>,  
Roger Clemens<sup>3</sup> and Peter Pressman<sup>4</sup> 

## Abstract

The complex cellular mechanisms and inter-related pathways of cancer proliferation, evasion, and metastasis remain an emerging field of research. Over the last several decades, nutritional research has prominent role in identifying emerging adjuvant therapies in our fight against cancer. Nutritional and dietary interventions are being explored to improve the morbidity and mortality for cancer patients worldwide. In this review, we examine several dietary interventions and their proposed mechanisms against cancer as well as identifying limitations in the currently available literature. This review provides a comprehensive review of the cancer metabolism, dietary interventions used during cancer treatment, anti metabolic drugs, and their impact on nutritional deficiencies along with a critical review of the following diets: caloric restriction, intermittent fasting, ketogenic diet, Mediterranean diet, Japanese diet, and vegan diet.

## Keywords

Diet, oncology, caloric restriction, ketogenic diet, intermittent fasting

Date received: 19 February 2020; accepted: 22 April 2020

## Introduction to cancer and nutrition

Cancer is the leading cause of death worldwide. In 2018 alone, over 1.7 million people were diagnosed with cancer and over 600,000 deaths have resulted from this disease.<sup>1</sup> From 1999 to 2015, the overall incidence of cancer decreased by 2.2% in men and remained stable in women, yet the mortality rate for both has only decreased slightly to 1.8% and 1.4% respectively.<sup>2</sup> These modest improvements in outcomes could be attributed to improvements in cancer therapies and detection; however, it is tempting to speculate that greater improvements could be achieved if the therapeutic effects of diet on cancer are considered.

The last decade seems to have witnessed a surge of interest in the role of diet and its effects on cancer metabolism. This interest is at least partly ignited by the rapid increase in the prevalence of obesity in the United States. Between 2015 and 2016, the National Health and Nutrition Examination Survey demonstrated 39.8% of adults and 18.5% of youth were obese.<sup>3</sup> A prospective study of over 900,000 adults in the United States showed a significant proportional increase between obesity and mortality risk from multiple cancers, including of the esophagus, colon and rectum, liver, gallbladder, pancreas, kidney, prostate, breast, uterus, cervix, and ovary.<sup>4</sup> With the high prevalence of obesity in the United

States, many investigators have sought to investigate the effects of excessive nutritional intake on the outcomes of cancer patients.

In general, cancer therapies target the hypermetabolic state of cancer cells to primarily destroying rapidly dividing tumor cells. However, rapidly dividing normal cells are also affected by anti-neoplastic therapies. As our understanding of tumor proliferation and apoptosis within individual cancers expands, investigators have been making significant strides to create targeted immunotherapies that will eliminate the bystander

<sup>1</sup>Division of Pediatric Hematology/Oncology, Mattel Children's Hospital, David Geffen School of Medicine, University of California, Los Angeles, Los Angeles, CA, USA

<sup>2</sup>David Geffen School of Medicine, University of California, Los Angeles, Los Angeles, CA, USA

<sup>3</sup>Pharmacology & Pharmaceutical Sciences, USC School of Pharmacy, International Center for Regulatory Science, Los Angeles, CA, USA

<sup>4</sup>Polyscience Consulting & Director of Nutrition and Public Health, The Daedalus Foundation, San Clemente, CA, USA

## Corresponding author:

Ashley Gray, Division of Pediatric Hematology/Oncology, Mattel Children's Hospital, David Geffen School of Medicine, University of California, Los Angeles, 10833 Le Conte Ave., MDCC A2-410, Los Angeles, CA 90095, USA.

Email: [AshleyGray@mednet.ucla.edu](mailto:AshleyGray@mednet.ucla.edu)



Creative Commons Non Commercial CC BY-NC: This article is distributed under the terms of the Creative Commons

Attribution-NonCommercial 4.0 License (<https://creativecommons.org/licenses/by-nc/4.0/>) which permits non-commercial use, reproduction and distribution of the work without further permission provided the original work is attributed as specified on the SAGE and Open Access pages (<https://us.sagepub.com/en-us/nam/open-access-at-sage>).

effect seen with traditional chemotherapy such as neutropenia, mucositis, renal failure, and cardiac dysfunction. The first example of immunotherapy was developed by Milstein and Kohler in 1970. Then, in 1997, rituximab, a monoclonal CD20 antibody, became available as a targeted treatment for non-Hodgkin's lymphoma and has since become a widely utilized therapeutic option due to its short-lived side effects that can be managed medically for 3–6 months.<sup>5</sup> While targeted therapy remains the goal of oncologists and patients alike, investigators are interested in how lifestyle modifications, such as dietary pattern, can impact tumor physiology and clinical outcomes. The advent of personalized medicine, precision cancer medicine, or “theranostics” further supports a departure from broad algorithmic interventions and instead focuses on the matrix of a specific patient's oncogenomic, pharmacogenomic, epigenetic, historical, and lifestyle characteristics. Nutritional status and diet are increasingly seen in this conception as significant matrix variables in predicting risk for disease, and response to intervention.

The role of diet in cancer metabolism is certainly an area of popular interest. The American Institute for Cancer Research and the World Cancer Research Fund estimates that 30%–40% of cancers can be prevented by healthy dietary regimens, improved physical activity, and maintenance of appropriate body weight.<sup>6</sup> While “prevention” is likely an overstatement, reduction of risk does appear to be supported by the evidence. It has been shown in epidemiological studies of breast cancer, prostate cancer, and colon cancer that migration to different countries influences overall risk of the development of these cancers, leading to hypotheses that changes in dietary habits may alter cancer risk. Kolonel et al.<sup>7</sup> demonstrated in 1980 that first-generation Japanese women had a threefold increase in breast cancer compared to Japanese woman living in Japan. It has been postulated that this difference may be partially explained by the switch from a primarily plant-based diet to a high-fat, high-sugar diet. Similarly, the mortality rate from stomach cancer in European migrants to Australia decreased in parallel with the length of time migrants stayed in Australia, but risk of colorectal cancer increased proportionally to the length of stay.<sup>8</sup> Prostate cancer studies have shown similar results where certain lifestyle factors are associated with the progression of malignancy.<sup>9</sup> These epidemiologic studies suggest that changes in lifestyle and dietary influences play a role in determining the risk of various cancers.

At the time of cancer diagnosis, many patients inquire about how lifestyle modifications can slow their tumor progression. Calorie restriction (CR) is a well-established dietary intervention for preventing cancer and increasing lifespan in experimental animal models.<sup>10</sup> In a prostate cancer xenograft mouse model, CR alone was shown to decrease final tumor weight, plasma insulin, and insulin-like growth factor (IGF)-1 levels and increase apoptosis, overall suggesting that decreasing caloric intake may reduce tumor proliferation.<sup>11</sup> In human studies, a 15% caloric reduction over 4 years demonstrated a sustained reduction in plasma

growth factors and hormones, which have been associated with increased risk of cancer.<sup>10,12</sup> The CALERIE study revealed that it was feasible for patients to comply with a 25% CR intervention over a 2-year period and later showed a reduction in markers of oxidative stress, which may inhibit cancer proliferation.<sup>13,14</sup> Another diet of interest is the vegan diet, which has been shown to decrease tumor markers and inhibit tumor cell growth in prostate cancer studies.<sup>15</sup> Optimization of dietary regimens has thus gained attention as a lifestyle modification that individuals may undertake to alter their risk of the development of malignancies.

Certain malignancies have well-documented associations with lifestyle habits, such as lung cancer with smoking and mesothelioma with asbestos exposure.<sup>16,17</sup> Although primary prevention of tumorigenesis is a shared goal by patients and oncologists alike, the majority of cancers do not have clear risk factors, thus posing challenges in educating patients about the proper exposures to avoid. With regard to lifestyle modifications and cancer risk, the general dietary guidelines published by the American Cancer Society advocate for the avoidance of excess weight gain, consumption of a primarily vegetarian-based diet, and limited intake of alcohol, red meat, and processed foods.<sup>18,19</sup> Here, we present a review of the expansive literature on the interactions between nutrition, diet, and the course of malignant neoplasms.

## Cancer metabolism

Cachexia is an integral component of involuntary weight loss in the setting of disease-associated wasting. It is further and still broadly defined as an inflammatory-associated wasting of protein, particularly skeletal muscle, and loss of energy stores. Cytokines and hormones, such as leptin, insulin, several interleukins, and growth factors, elicited in disease and as principal mediators of inflammation may in effect tilt physiology toward catabolic breakdown of tissue presumably in service of mobilizing critical nutrients for central nervous system and aspects of immune function.<sup>20</sup>

Cachexia has been shown to be associated with cancer-related mortality; however, no consistently effective therapies have been developed to prevent or hamper its progression.<sup>20</sup> Even for patients who are able to eat—appetite suppression or anorexia is a common cachexia symptom—and efforts to improved nutrition often offer little respite.<sup>21</sup> It is interesting to speculate that underreporting of cachexia as a “contributing cause of death” has perennially affected the primacy placed on research and funding of this enormously pervasive process.

As a special case, cancer-induced cachexia is described as a multifactorial metabolic disorder seen in 50% of cancer patients.<sup>22</sup> The exact mechanisms remain unclear, but it is thought to be typified by an increase in energy expenditure, hepatic gluconeogenesis, fat lipolysis, and skeletal muscle proteolysis leading to progressive weight loss throughout therapy.<sup>23,24</sup> Further complicating this phenomenon, as noted previously, is that this auto-catabolic process is not reversed by total parental nutrition or supplements.<sup>25</sup> It is important to

note that the relationship between tumor phenotype to host genotype likely results in heterogeneity in the degree of cachexia between individuals with the same malignancy.

Even prior to diagnosis, most cancer patients will experience a significant degree of catabolism leading to both muscle and adipose depletion, in contrast to the predominant wasting of adipose tissue in anorexic patients.<sup>26</sup> This difference may be due to the change in resting energy expenditure (REE), which is defined as the amount of energy expended by a person at rest. A recent meta-analysis of 27 studies comparing 1453 cancer patients to 1145 control patients shows that, on average, the REE of cancer patients was 9.66% higher than that of controls.<sup>27</sup> It is important to note that different malignancies are known to have varying degree of metabolism, and one study found marked REE variation among different cancer groups ( $p < 0.001$ ).<sup>27</sup> For example, Burkitt's lymphoma has a doubling time of 24h,<sup>28</sup> while Hodgkin's lymphoma has a doubling time of 29 days.<sup>29</sup> Therefore, the specific type of cancer may have large effects on the overall metabolism within the patient.

It was first described in 1927 by Otto Warburg et al.<sup>30</sup> that tumors cells demonstrate an aberrant metabolic pathway that contributes to excessive catabolism. In normal tissues via oxidative phosphorylation, one molecule of glucose is able to produce 36 adenosine triphosphate (ATP) molecules, which are the intracellular energy used to drive cellular processing. Cells also have an alternative pathway known as glycolysis, which utilizes one molecule of glucose to produce just two ATP molecules. In a phenomenon known as the Warburg effect, tumor cells selectively upregulate key regulators of glycolysis, such as hypoxia-induced factor-1 $\alpha$  (HIF-1 $\alpha$ ).<sup>31</sup> HIF-1 $\alpha$  drives three main processes: (1) increased expression of glucose transporter-1 (GLUT-1) leading to increased glucose availability for glycolysis;<sup>32</sup> (2) increased pyruvate dehydrogenase kinase production leading to increased conversion of lactate to pyruvate and decreased production of acetyl CoA necessary for the Krebs cycle (produces one ATP and three nicotinamide adenine dinucleotide (NADH));<sup>33</sup> and (3) increased lactate dehydrogenase production leading to increased conversion of lactate to pyruvate, which serves as the primary substrate for gluconeogenesis in the liver.<sup>31</sup> Increased lactate acid production via glycolysis is also released systemically, where it undergoes gluconeogenesis in an ATP-consuming process known as the futile lactate-glucose shunt, or Cori cycle.<sup>34</sup> Overall, these processes promote an overall energy deficient state, leading to lipolysis and proteolysis and eventually cachexia. A recent *in vivo* study with human pancreatic cancer cells in athymic mice reveals that the Warburg effect was present in the complex system of a live animal, thus further supporting these proposed mechanisms of cancer-induced cachexia.<sup>24</sup> After 90 years since the Warburg effect was proposed, it remains unclear if the Warburg effect acts independently or if physiologic interactions in response to the Warburg effect drive cancer-induced cachexia.

Systemic inflammation that occurs during tumor proliferation is thought to contribute to cachexia.<sup>35</sup> Elevation in

pro-inflammatory markers, such as C-reactive protein and fibrinogen, has been positively correlated with the degree of muscle wasting in cancer and chronic disease.<sup>36,37</sup> Cytokines, including tumor necrosis factor-alpha (TNF- $\alpha$ ), interleukin-1 (IL-1), and interleukin-6 (IL-6), contribute to persistent inflammation and increase rates of gluconeogenesis, lipolysis, and proteolysis.<sup>38</sup> TNF- $\alpha$  also stimulates the expression of uncoupling proteins 2 and 3 (UCP2/3) in cachectic skeletal muscle, due to UCP's mediated proton leakage, and decreases the coupling of respiration to ADP phosphorylation, thereby generating heat instead of ATP from brown fat.<sup>37,39</sup> In fact, IL-6 levels have been found to be elevated in cachectic patients when compared with patients who maintained their weight during therapy.<sup>37</sup> These mechanisms have been replicated in animal studies, where IL-6 blockade in mice leads to attenuation of protein degradation<sup>40</sup> and TNF- $\alpha$  blockade decreases catabolism in rat models.<sup>41,42</sup>

The role of neuropeptides in inducing anorexia during a catabolic state is emerging as a major contributing factor to cancer-induced cachexia. There appears to be an imbalance between appetite-stimulating molecules, such as neuropeptide P (NYP), melanin-concentrating hormone, orexins, endogenous opioids, and cannabinoids compared with appetite suppressant molecules such as serotonin, peptide YY, cholecystokinin, leptin, and insulin.<sup>43</sup> The role of neuropeptide Y is of special consideration as it is produced primarily in the hypothalamus and has a robust feeding stimulatory effect. Overstimulation with NYP leads to obesity in rats, in addition to decreased energy expenditure and reduced brown fat thermogenesis.<sup>43</sup> However, NYP injection into rats with sarcomas showed a reduction in feeding behavior, and a separate study revealed that rats with malignancies demonstrated a reduced release of NYP, suggesting that tumors may induce neurohormonal changes that decrease feeding activity and compound weight loss in cancer patients.<sup>44-46</sup>

Another hormone of interest is leptin, a protein primarily produced in white and brown adipocytes that is responsible for peripheral signaling to reduce appetite and increase energy expenditure.<sup>47</sup> While decreased food intake normally suppresses leptin production, anorexia has been associated with increased leptin levels in adipose tissue and plasma.<sup>48,49</sup> Multiple authors have reported low or undetectable circulating leptin levels in cancer patients, suggesting a degree of leptin dysregulation.<sup>50</sup> Elucidating the mechanisms behind neurohormonal dysregulation of leptin may provide insight into further therapeutic options in the future.

### Anti-metabolic drugs and their impact on nutritional deficiencies

Cancer chemotherapy regimens target rapidly dividing cells by either inhibiting DNA or protein synthesis or restricting essential micronutrients, thus leading to cellular death. Further, studies show that between 30% and 90% of patients have inadequate dietary regimens.<sup>51,52</sup> Chemotherapy, along with poor nutritional intake during treatment, is a great concern for

**Table 1.** Chemotherapy and nutritional deficiencies.

Chemotherapy	Mechanism of chemotherapy	Type of malignancy	Nutritional deficiencies	Nutritional supplementation
Methotrexate	Antifolate metabolite	Leukemia Lymphoma Osteosarcoma	Folic acid	Folic acid
5-Fluorouracil Gemcitabine	Competitive inhibitor of thymidylate synthase	Colorectal Breast Head and neck Pancreatic	–	Intravenous omega-3 (with gemcitabine; single-study evidence)
Cisplatin Carboplatin Oxaliplatin	Cross-linking between adjacent guanine	Testicular Ovarian Lung Osteosarcoma Neuroblastoma		Selenium (with cisplatin)

patients and physicians. Chemotherapies that affect the nutritional status of patients include anti-metabolites, such folate, purine, and pyrimidine analogs, in addition to platinum-based drugs. Due to the broad mechanism of action of these drugs, many organ systems are adversely affected.

Methotrexate is an anti-metabolite folate analog that is used in standard therapy protocols for leukemia, lymphoma, and osteosarcoma.<sup>53–55</sup> Methotrexate leads to cellular death by acting as a dihydrofolate inhibitor, which is responsible for the conversion of dihydrofolate to tetrahydrofolate. Inhibition of tetrahydrofolate formation reduces the availability of one-carbon fragments necessary for the production of purines and the conversion of deoxyuridylate to thymidylate for DNA synthesis and cell reproduction. Although rapidly dividing malignant cells are most affected by inhibition of DNA synthesis, other rapidly proliferating cells are affected as well, such as hematopoietic and epithelial cells, thus leading to myelosuppression and mucositis.<sup>56</sup> Due to these side effects, a leucovorin “rescue” is performed 24 h after methotrexate is administered. Leucovorin is a derivative of tetrahydrofolic acid, which does not require dihydrofolate reductase activity and thus “rescues” the healthy cells by allowing for de novo DNA synthesis to resume.<sup>57</sup> Although methotrexate is associated with favorable mortality outcomes in combination with other chemotherapies, it is difficult to predict one’s toxicity after treatment. Therefore, dose reductions are often necessary due to severe side effects from inhibition of DNA synthesis and cellular proliferation.

5-Fluorouracil (5-FU) is a competitive inhibitor of thymidylate synthase, which blocks thymidine synthesis and inhibits DNA and RNA replication.<sup>58</sup> 5-FU is widely used in colorectal, breast, and head and neck cancers.<sup>58</sup> Interestingly, increased intracellular folate levels increase thymidylate synthase levels, thereby enhancing the inhibitory effects of 5-FU. This interaction between metabolites suggests that optimal nutrition can improve chemotherapy effects in specific cancer groups.<sup>59,60</sup> Gemcitabine has a similar mechanism of action with 5-FU; however, it is a prodrug that, when phosphorylated, interrupts DNA synthesis and inhibits DNA repair,

leading to cellular death.<sup>56</sup> In pancreatic cancer, it has been shown that intravenous omega-3 fatty acids, along with gemcitabine, improve quality of life scores with regard to chemotherapy-induced side effects.<sup>61</sup> The relationship between targeted supplementation and chemotherapy optimization suggests that optimized nutrition and reduction of chemotherapy effects could be dependent on specific treatment regimens.

Platinum-based chemotherapy drugs such as cisplatin, carboplatin, and oxaliplatin are used in the treatment of cancers such as testicular, ovarian, and lung cancer, in addition to osteosarcoma and neuroblastoma.<sup>62</sup> After the platinum-based drug is incorporated into the cell using copper transporters, it binds at the N7 position of guanine, causing cross-linking between adjacent guanine. This leads to failed DNA repair mechanisms and eventually cellular apoptosis.<sup>63</sup> Two studies in patients with solid tumors showed that selenium supplementation, when given during cisplatin therapy, reduced myelosuppression and nephrotoxicity, suggesting that optimal levels of selenium could aid in the toxicity profile related to platinum-based therapies. It was not reported whether mortality or relapse rates were affected by this type of supplementation, and thus, more studies are warranted to elucidate these data (Table 1).<sup>64,65</sup>

## Dietary approaches

### Western diet

Environmental and lifestyle factors, including diet, are hypothesized to influence risk of malignancy.<sup>66</sup> In the United States, the vast majority of Americans consume a Western diet, which consists of a high intake of fats, processed meat, dairy, and carbohydrates and low intakes of fiber.<sup>67</sup> This composition has been associated with broadly negative impacts on glycemic load, fatty acid composition, micronutrient and macronutrient composition, sodium intake, and fiber content, all of which have been suggested to contribute to tumorigenesis.<sup>68</sup> Since the diet is a modifiable risk factor

in many of the diseases we see today, the interaction between how diet may modify cancer risk is an important area of emerging research.

It is postulated that the shift to the Western diet among many countries may be a contributing factor to the apparent increase in chronic diseases, including hypertension, coronary artery disease, hyperlipidemia, and osteoporosis.<sup>68</sup> Over the last few decades, the Western diet has been epidemiologically associated with an increased incidence of many cancers, including prostate cancer,<sup>67</sup> breast cancer,<sup>69</sup> colorectal cancer,<sup>70</sup> among many others.<sup>71</sup> Specifically, one study concluded that a Western diet showed an overall odds ratio of colon cancer risk of 1.88 when compared with individual who consumed higher intakes fruits, vegetables, and grains combined with a lower intake of red/processed meats.<sup>72</sup> Another study found that those who followed a Western diet had an increased risk of prostate cancer, with an odds ratio of 1.34 compared with those who consumed healthier diets of fish, poultry, and whole grains.<sup>67</sup> These large cohort studies suggest that dietary pattern has a substantial impact on risk of developing various malignancies. Despite large samples, hypotheses should be tempered by the clinical reality that there are many antecedent and intervening variables that may confound conclusions.

Nevertheless, specific dietary regimens have gained increased interest as potentially effective adjuvant interventions to traditional cancer therapies. Here, we will discuss some of the more prominent dietary approaches, the evidence behind the respective elements, and the principal limitations.

## CR

**Introduction.** CR is defined as a reduction in dietary intake by approximately 30%, to improve metabolic profile, without causing malnutrition.<sup>73,74</sup> It has been postulated to be a potentially powerful dietary intervention that could be integrated into a patient's cancer therapy due to results showing an increased life span and decreased risk of chronic and age-related diseases, including cancer, type II diabetes, and cardiovascular disease.<sup>75</sup> The mechanism behind CR stems from the concept that excessive adiposity from obesity can increase levels of oxidative stress, inflammation, and growth factors, which all may have promotive effects on tumorigenesis.<sup>76</sup> Thus, the negative net energy resulting from CR may lead to decreased inflammation and growth factor production, thus suppressing the neoplastic activity of the tumor cells. As such, the utility of CR is gaining momentum as a powerful option to improve the efficacy and augment the response of current anti-neoplastic therapies.

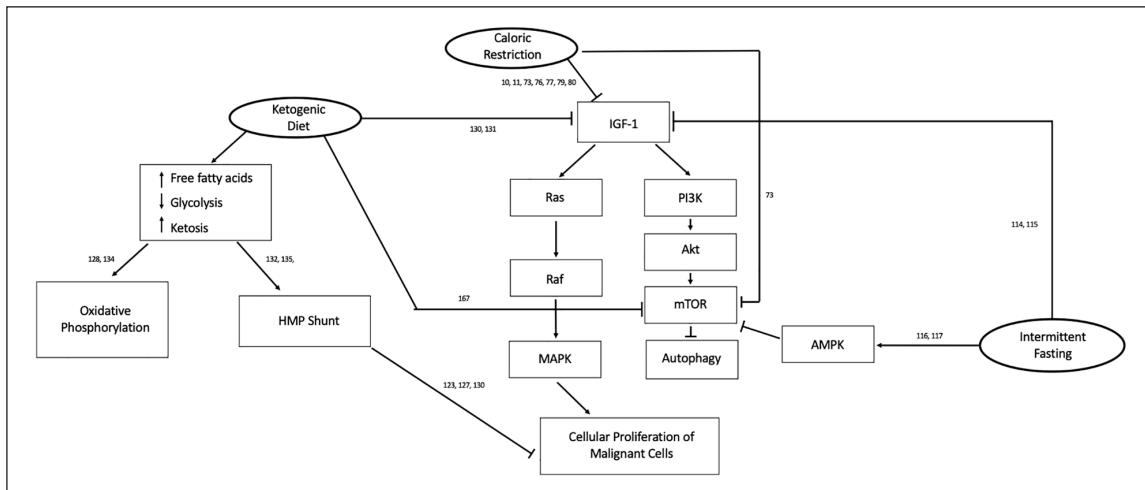
**Proposed mechanism.** CR has been shown to exert its effects on tumor progression through altered levels of various growth factors. The most well-studied growth factor is IGF-1, which upregulated by growth hormone and acts with other anabolic hormones to upregulate energy metabolism and

proliferation.<sup>77</sup> In murine models, CR has been shown to reduce IGF-1 by about 30%–40% in mice.<sup>78</sup> Conversely, mice with growth hormone deficiency are shown to have low IGF-1 levels associated with delayed incidence of lung adenocarcinoma.<sup>79</sup> Interestingly, in a cohort of Laron dwarfs, who are individuals with an autosomal recessive mutation in growth hormone receptor and are also IGF-1 deficient, none of the patients with dwarfism had a history of cancer while 9%–24% of family members developed a wide variety of malignancies.<sup>80</sup> In stark contrast, patients with acromegaly, who have chronically elevated IGF-1 levels, have been shown to have an increased risk of colon cancer.<sup>81</sup> Furthering this theory is that infusion of growth hormone or IGF-1 in mice reverses the protective effects of CR against mononuclear cell leukemia development and progression.<sup>10,82</sup> IGF-1 has a role in the proliferation profile of several malignancies, and CR may be a preventive and/or complementary approach for reducing a known tumor-stimulating growth factor.

IGF-1 is primarily involved in the regulation of two major pathways that coordinate cellular proliferation and growth: Ras/MAPK (mitogen-activated protein kinase) and phosphatidylinositol 3-kinase (PI3K)/protein kinase B (AKT; Figure 1). Activation of Ras/MAPK promotes transcription factors involved in cellular growth, while activation of PI3K/AKT decreases apoptosis.<sup>83</sup> CR has been shown to decrease serum levels of IGF-1, thereby causing downregulation of both the Ras/MAPK and PI3K/AKT pathways, which inhibit both tumor growth and development.<sup>73</sup> In addition, CR has been shown to improve insulin sensitivity via downregulation of IGF-1 levels and improve glucose tolerance.<sup>84</sup> Thus, CR may promote insulin sensitivity leading to decreased serum blood glucose and decreased IGF-1 levels, which may mitigate one of the mechanisms driving cancer cell proliferation.

The utility of CR may be further enhanced when complemented with local cytotoxic therapy. Targeting the primary tumor with local radiation, in combination with CR, is hypothesized to alter the molecular profile of the tumor.<sup>85</sup> Indeed, mice receiving an IGF-1R inhibitor, to replicate CR, along with radiation therapy, required a longer period to develop breast cancer metastasis to the lung and had increased overall survival.<sup>85</sup> A report shows that chloroquine, in combination with cell starvations, induces a greater degree of growth arrest and cell death compared with either treatment used in isolation in melanoma, glioma, and fibrosarcoma cells.<sup>86</sup> This synergistic potential of CR is an especially powerful tool that may better the outcomes of patients receiving standard therapies.

Another growth factor associated with obesity is leptin, a hormone produced by white adipose tissue that activates cell proliferation and affects angiogenesis, carcinogenesis, and cytokine production.<sup>87</sup> CR has been shown to decrease leptin release while increasing serum levels of adiponectin, another growth hormone found to improve insulin sensitivity and promote anti-inflammatory and anti-proliferative properties.<sup>88</sup> As stated previously, leptin may have proliferative and angiogenic effects to promote cancer progression. Since CR may



**Figure 1.** Dietary effect on proliferation pathways associated with cancer. Dietary interventions have been shown to affect the complex interaction between proliferation and apoptotic pathways. IGF-1, a growth factor that acts as an anabolic hormone to upregulate energy metabolism and proliferation, has been thoroughly studied in numerous cancer models. Activation of Ras/MAPK promotes transcription factors involved in cellular growth. Conversely, the PI3K/AKT pathway decreases apoptosis via mTOR inhibition of autophagy. Caloric restriction, intermittent fasting, and the ketogenic diet have been shown to decrease IGF-1 levels, thereby inhibiting both Ras/MAPK and PI3K/AKT proliferation pathways. Caloric restriction and intermittent fasting have also been shown to directly inhibit the mTOR pathway, thereby relieving the inhibition of the autophagy pathway to result in apoptosis. Conversely, intermittent fasting has been shown to activate AMPK, which inhibits mTOR from halting autophagy in rapidly growing cancer cells. Finally, the ketogenic diet inhibits the mTOR and IGF-1 pathways and promotes ketosis, which reduces the availability of glucose and leads to the reliance on the HMP shunt over oxidative phosphorylation. The deprivation of glucose in the ketogenic diet creates an environment where non-malignant cells are able to utilize ketones to survive during ketosis, while cancer cells are “starved” of an energy source stemming from a lack of glucose availability.

MAPK: mitogen-activated protein kinase; PI3K: phosphatidylinositol 3-kinase; AKT: protein kinase B; HMP: hexose monophosphate; IGF: insulin-like growth factor; mTOR: mammalian target of rapamycin; AMPK: AMP-activated protein kinase; AMP: adenosine monophosphate. The numbers indicate references with additional information about the dietary interaction and metabolic pathway interactions.

decrease serum leptin levels,<sup>89</sup> this concept has been applied to breast cancers, where it has been shown that leptin may have pro-carcinogenic effects via modulation of signaling pathways responsible for tumor proliferation.<sup>90</sup> Further, a meta-analysis found that elevated leptin levels may play a significant role in the metastasis of breast cancer.<sup>91</sup> Since leptin receptors have been found to be overexpressed in breast tumors compared to normal breast tissue,<sup>92</sup> leptin inhibition has gained attention as a powerful new target in breast cancer therapy.<sup>93</sup> Overall, CR may be utilized as an adjuvant in patients with cancer due to its effects on serum leptin levels.

CR also targets the mechanism of autophagy to inhibit tumor proliferation. Autophagy is a catabolic process of self-eating in response to starvation and stress which in theory could increase tumor cell death, thus inhibiting tumor proliferation.<sup>94</sup> It is utilized by non-cancerous cells to promote the recycling of cellular components required to maintain homeostatic function. Stressors, such as exposure to metals, hypoxia, sepsis, and chemotherapy, induce oxidative damage that may harm organelles, especially mitochondria; thus, autophagy provides the mechanism to degrade defective organelles, remove misfolded proteins, and digest non-critical cellular components as an alternative energy source to repair critical proteins.<sup>94</sup> It has been found that CR may further promote autophagy and assist

with maintenance of homeostasis in the exposure to stress.<sup>95</sup> The balance of autophagy is under the influence of the AMP-activated protein kinase (AMPK)/mammalian target of rapamycin (mTOR) axis.<sup>73</sup> IGF-1 has been shown to activate mTOR, which promotes cellular proliferation and inhibits autophagy, while AMPK inhibits mTOR. CR has been shown to activate AMPK, thereby inducing systemic autophagic activity.<sup>73</sup> While the role of autophagy in benign cells is well established, the function of autophagy in cancerous cells is unclear. An upregulation of autophagy in surrounding stromal cells, in the context of decreased autophagy in cancerous cells, has been proposed to be both tumor suppressive and promotive.<sup>94,96</sup> Conversely, some propose that established cancer cells instead may upregulate autophagy during CR, thus promoting evasion of TNF- $\alpha$ -induced apoptosis and cellular survival.<sup>73</sup> Further research behind the underlying effects on the proliferation pathways is essential to better understand how CR-induced autophagy contributes to tumorigenesis.

Angiogenesis and inflammation have been shown to be related to tumor proliferation, and CR has been shown to modulate these processes to exert anti-neoplastic effects. CR has been shown to decrease expression of plasminogen activator inhibitor 1 (PAI-1)<sup>97</sup> and vascular endothelial growth factor (VEGF)<sup>74,98</sup> which are cytokines that promote angiogenesis,

thereby allowing for metastatic spread of tumor cells. CR also decreases levels of chronic inflammation by reducing absolute quantity of adipose tissue.<sup>99</sup> When adipocytes are present in excess, they risk hypoxia and necrosis from insufficient perfusion.<sup>100</sup> Free fatty acids may escape from necrotic tissue and release inflammatory cytokines such as nuclear factor kappa B (NF- $\kappa$ B), a transcription factor that induces gene expression for cellular proliferation and metastasis, or COX-2, which increases production of inflammatory lipid metabolites.<sup>101</sup> CR has shown to be a potent inhibitory modulator of tumorigenesis via inhibition of angiogenesis and inflammation.

**Limitations.** It is important to consider the patient's baseline nutritional status, stage of therapy, and recommendations from the primary oncologist and registered dietitian prior to incorporating any dietary intervention. One of the primary concerns with CR is the risk of cachexia. Extreme cachexia has been associated with alterations between the patient's immune system and metabolic state.<sup>73</sup> Since CR requires a decrease in caloric intake, patients who have already experienced significant weight loss due to therapy, vomiting, diarrhea, or anorexia may not be ideal candidates to incorporate CR into their overall treatment plan. In addition, CR may require several months for effects to be observed in patients,<sup>102</sup> thus potentially exacerbating further weight loss in patients who may already be significantly underweight and at risk for malnourishment. In addition, some physicians may advise against CR as certain chemotherapy regimens are already associated with patient-driven CR due to nausea and anorexia. As a result, the practicality of CR has been difficult to assess since oncology patients are generally advised to increase food intake to combat therapy-induced weight loss.<sup>103</sup> Therefore, other dietary interventions, such as intermittent fasting (IF), fasting-mimicking diets, or ketogenic diets (KDs), which have lower potential for weight loss, have been explored as alternative forms of dietary interventions in cancer therapy.

Due to the concerns surrounding extreme weight loss in at-risk patients, CR mimetics have been proposed as an alternative to provide the beneficial effects of CR without inducing cachexia. CR mimetics are supplements or medications that take advantage of the beneficial effects described during CR without dietary restriction.<sup>73</sup> For example, metformin is a common type 2 diabetes medication which activates the AMPK (5' AMPK) pathway and increases insulin sensitivity in a similar fashion to the proposed CR mechanism described above that has been linked to anti-neoplastic activity.<sup>104</sup> Metformin is a relatively safe medication; however, common side effects include hypoglycemia. Another drug of interest is rapamycin, an antibiotic and immunosuppressive drug that inhibits mTOR, which has been shown to delay cancer progression, extend life span, and increase the sensitivity of certain cancers to chemotherapy and radiation therapy.<sup>105</sup> Common side effects of rapamycin include hypertriglyceridemia, increased risk of infection, diabetes-like symptoms, and hypertension.<sup>106</sup> Given these promising

results, a wide variety of CR mimetics are currently under development to affect tumor metabolism and sensitize tumors to standard and emerging cancer therapies.<sup>73</sup> Of note, side effect profiles should be considered prior to starting any medications as their risk may vary widely based on the patient's medical history.

## IF

**Introduction.** IF has been used as a dietary regimen for acute and chronic diseases worldwide.<sup>103</sup> IF is a dietary regimen that includes the complete cessation of caloric intake for a period of time, generally from 16 up to 120h, followed by a refeeding period. During the refeeding period, a person is not restricted to certain food groups or amount of food they can consume.<sup>103</sup> In murine models, IF has been shown to improve the efficacy of chemotherapy regimens used in breast cancer, melanoma, neuroblastoma, pancreatic cancer, and colorectal cancer.<sup>107</sup> Interestingly, IF has been shown to protect healthy cells against chemotherapy damage and stress resistance as a "protective effect," therefore decreasing off-target side effects of standard chemotherapy regimens.<sup>107,108</sup> Therefore, the utility of IF has emerged as a possible adjuvant dietary therapy to decrease tumor proliferation and improve therapeutic tolerance.

**Proposed mechanisms.** The primary benefit of IF is based on the physiological mechanisms that occur during starvation. During first 10h of starvation, the body will utilize consumed food and stored glycogen for energy primarily in the liver. Upon depletion of liver glycogen stores, muscle and adipose tissues are broken down to supply energy through an alternative pathway. Amino acids are produced via breakdown of muscle and fatty acids via breakdown of adipose tissue. Fatty acids can further be broken down into ketone bodies, which can be used as an energy source by most tissues except the brain.<sup>109</sup> Clearly, acute periods of starvation induce a drastic change in the metabolic state of the body and has shown to play a role in cancer models.

During fasting, where there is a cessation of caloric intake, normal cells will reallocate energy away from anabolic and regenerative pathways toward maintenance pathways due to resource limitation, which may limit the growth potential of cancerous cells.<sup>107</sup> This overall decrease in anabolism is thought to lead to a protective state known as a phenomenon termed differential stress resistance (DSR).<sup>110,111</sup> Unfortunately, neoplastic cells are incapable of inhibition of oncogenes, such as Ras/Raf/MAPK, phosphatase and tensin homolog (PTEN), and PI3K, which are the primary drivers of malignant proliferation cellular profiles (Figure 1).<sup>107,111</sup> Together, IF may be a mechanism of protecting the healthy cells from transformation into malignant cells and resistance against treatment-related toxicity.

The differential stress response is manifested through several molecular mechanisms. IF has been reported in literature to delay tumor progression and increase effectiveness

of chemotherapy against a variety of cancers, including melanoma, glioma, and breast cancer.<sup>107</sup> This sensitization of tumor cells to chemotherapy is thought to be related to the decreased circulation of growth factors and changes in plasma levels of nutrients that sensitize cells to toxic therapy.<sup>112</sup> Specifically, IF has been shown to decrease insulin and growth hormone levels, which lead to decreased IGF-1 levels thus reducing the activation of the Ras/MAPK and PI3K pathways.<sup>113,114</sup> In addition, IF has been shown to activate AMPK (5' AMPK), which inhibits cellular proliferation and protein synthesis, activates glycolysis and fatty acid oxidation, and induces autophagy.<sup>115,116</sup> IF has also been shown to increase activation of caspase-3, which is a crucial mediator of programmed cellular death that is selectively upregulated in malignant cells.<sup>107</sup> IF has multiple molecular mechanisms that appear to have a complex role in cancer metabolism and further studies will be needed to elucidate key pathways.

Murine and human studies have shown that IF may reduce the toxicities from chemotherapy and improve clinical outcomes. Specifically, a case series found that fasting before and after chemotherapy can selectively enhance toxicity of chemotherapy drugs to various malignancies, including the breast, esophagus, and prostate.<sup>117</sup> One study found that fasting cycles combined with cyclophosphamide reduced breast tumor size to less than half of what was seen with fasting or chemotherapy alone. This same study also saw that combination of low serum glucose with chemotherapy promoted a 20-fold increase in DNA damage in breast and melanoma cancer cells, greater than what was seen with each treatment in isolation.<sup>107</sup> Another study shows that starvation of mice for 24 h before and after chemotherapy selectively sensitizes cancer cell lines to oxidative stress from doxorubicin and cyclophosphamide.<sup>108</sup> Thus, multiple studies have shown that there may be a synergistic effect between IF and specific chemotherapies, suggesting that particular cancer types may benefit more from adjuvant dietary interventions such as IF.

Severe side effects from chemotherapy can limit a patient's ability to receive the full course of their treatment regimen; thus, some investigators have sought to study the potential ways that IF could decrease the severity of these side effect profiles. In a murine model, mice that underwent IF for 48–60 h had lower rates of toxicity to etoposide than mice that were allowed to eat ad libitum.<sup>108,118</sup> In two human cohorts, IF was well tolerated as well and showed significant decrease in chemotherapy-related side effects, such as weakness, fatigue, and nausea,<sup>117</sup> while another study showed less gastrointestinal (GI) upset from therapy.<sup>119</sup> Together, these studies suggest that IF may improve side effect profiles, allowing the individual to better tolerate a complete chemotherapy regimen without delays in care or dose reduction, thereby potentially promoting the effectiveness of their therapy.

**Limitations.** The main concern about IF is the potential for significant weight loss. Many cancer patients experience nausea, vomiting, diarrhea, loss of appetite, or depression which can

lead to malnutrition in this already at-risk population.<sup>119</sup> Studies have suggested that IF may need to be extended to at least 24 h and potentially up to 48 h, to see the protective effects described above.<sup>103</sup> In contrast to an overall reduction in caloric intake which is used in CR, IF has the potential to lead to malnourishment, given the strict caloric limitations.<sup>73,103</sup> With that in mind, the extended duration of IF may not be possible for some patients for various reasons, including baseline weight and nutritional status prior to diagnosis, particular cancer diagnosis, current chemotherapy regimens being used, and their individual risk for nutritional deficiencies. Therefore, the cost/benefit of IF should be assessed on an individual basis with the treating oncologist, registered dietitian, and patient to determine if IF is safe and feasible. Overall, preliminary results suggest that IF is well tolerated by most patients but the risk of severe weight loss cannot be ignored.

## KD

**Introduction.** The KD is a high-fat, moderate-protein, and low-carbohydrate diet. Recently, the KD has gained popularity as a method to promote weight loss and reduce risk for various chronic diseases,<sup>120</sup> including metabolic diseases such as GLUT-1 deficiency and pyruvate dehydrogenase complex deficiency.<sup>121</sup> Most notably, the KD has been used for over 80 years as an effective adjuvant therapy for children suffering from refractory epilepsy<sup>122,123</sup> and, more recently, it is being explored with diabetes and cancer.<sup>124–126</sup>

The foundation of the KD is an emphasis on higher fat consumption with moderate to low protein content and very low carbohydrate intake, with a ratio of fat:carbohydrate and protein around 3:1 or 4:1 in order to drastically decrease circulating glucose, which is thought to be the primary energy source of the rapid dividing malignant cells.<sup>126</sup> This dramatic shift away from glucose as the primary energy supply to ketosis which is the breakdown of adipose tissue via fatty acid oxidation leading to ketone body formation is known as dietary ketosis.<sup>127</sup> Ketosis has been hypothesized to inhibit tumor proliferation while still providing sufficient energy for peripheral tissue.<sup>126,127</sup> Moreover, CR and KD have been found to dramatically decrease tumor cell proliferation through the inhibition of the IGF-1 pathway (Figure 1);<sup>128,129</sup> however, the degree of weight loss may potentiate cancer-related cachexia.<sup>103,119</sup> This has led to the KD being explored as an alternative dietary regimen that shifts the metabolic processes away from tumor growth while avoiding CR and prolonged periods of fasting.

**Proposed mechanism.** The proposed effectiveness of the KD relies on the many metabolic differences between normal cells and cancer cells, especially in the metabolism of glucose. As a review, under normal oxygen-rich conditions, glucose is broken down to pyruvate via glycolysis, which is then converted to acetyl CoA. Acetyl CoA enters the mitochondria to initiate the citric acid cycle and the electron transport chain in a process known as oxidative phosphorylation to



produce energy for the body in the form of adenosine triphosphate or ATP (36 ATP per one glucose molecule). This process is driven by the availability of glucose and is the most efficient mechanism of energy production in the body. Mitochondria with preserved function tightly regulate cellular energy production via these processes, and the majority of ATP is produced through oxidative phosphorylation. This is the primary mechanism by which all cells in our body receive energy for growth and metabolism and cancer cells are no exception. It has been suggested that tumor cells may have mitochondrial DNA mutations that drive cells to utilize the oxidative phosphorylation pathway, leading to an increase in reactive oxygen species production and oxidative stress as a subsequent by-product of aerobic metabolism.<sup>130</sup>

In the absence of oxygen, pyruvate is instead converted to lactate for energy production via non-oxidative pathways such as ketosis, which produces far less ATP than oxidative phosphorylation (two ATPs per one glucose molecule). ATP is essential for driving the metabolic machinery in all cells, especially for malignant cells. Since malignant cells require more ATP, it has been postulated that if one can decrease excess glucose intake, then the glycolytic pathways will prevail and essentially “starve” the malignant cells, leading to cellular death. This has led to the idea that a KD may aid in “starving” malignant, thus reducing or preventing cellular proliferation pathways.

Malignant cells are thought to utilize a unique metabolic pattern termed the Warburg effect, where anaerobic glycolysis is preferably utilized instead of oxidative phosphorylation for ATP production, regardless of oxygen status.<sup>131</sup> As described above, a diet low in carbohydrates will result in an initial increased rate of glucose metabolism forcing the cells to utilize glycolysis as their primary energy source. This is thought to be beneficial to the patient as malignant cells are rapidly dividing and thus require glucose to more efficiently produce energy to drive their anabolic metabolism. Some studies have shown that glucose uptake and lactate release by tumors is 30- to 43-fold that of non-malignant cells, suggesting that tumor cells will utilize both pathways, including ketosis, to compensate for lack of glucose availability for oxidative phosphorylation (Figure 1).<sup>126,132</sup> In addition, to address the lack of glucose, malignant cells rely heavily on the hexose phosphate pathway (HMP shunt),<sup>133</sup> which converts glucose 6-phosphate, an intermediate in glycolysis, to the cofactors nicotinamide adenine dinucleotide phosphate (NADPH) and ribose 5-phosphate to detoxify organic peroxides and mitigate oxidative damage.<sup>130</sup>

The KD seeks to shift the metabolism toward ketosis to limit anabolism, therefore inhibiting growth and proliferation pathways in malignant cells. When glucose is limited, the body is forced to utilize stored adipose tissue instead of glucose for ATP production. After prolonged periods of glucose restriction, the body preferentially enters ketosis where fat is metabolized via fatty acid oxidation to produce ketone bodies including  $\beta$ -hydroxybutyrate, acetone, and

acetoacetate. Ketone bodies are then converted to acetyl CoA for use in the citric acid cycle for ATP production.<sup>126</sup> This is an important underlying principal in the KD, where glucose availability is limited, creating an environment where non-malignant cells are able to utilize ketones to survive during ketosis, while cancer cells are “starved” of an energy source due to a lack of glucose availability.

Thus, the KD may selectively increase oxidative stress in cancer cells through two mechanisms. First, malignant cells are dependent on glucose metabolism for the production of glucose 6-phosphate, which is converted to detoxifying cofactors via HMP shunt. Without glucose, the source of cofactors to reduce reactive oxygen species is eliminated, thereby inducing oxidative stress in malignant cells.<sup>126</sup> Second, forced fatty acid oxidation in the KD provides energy that is primarily utilized by non-malignant cells since cancerous cells are poor metabolizers of ketones. Together, the KD decreases the substrate for the most efficient energy production in the cell via a significant reduction in glucose availability while concurrently promoting oxidative stress in malignant cells by removing the source for detoxifying cofactors.

There are a wide variety of studies that illustrate the possible anti-neoplastic effects of the KD.<sup>134,135</sup> A review article evaluated the effects of KD on tumor growth and survival time in animal models. The majority of the papers revealed a beneficial effect seen across a variety of tumor types including prostate, gastric, neuroblastoma, and lung.<sup>136</sup> More specifically, in a colon carcinoma murine model, mice fed with a ketogenic formula showed cancer suppression compared with mice fed with regular diets. Interestingly, there was a significant negative correlation between blood ketone concentration and tumor weight. Adverse effects were not noted. The investigators postulated that elevated blood ketone levels may have anti-tumor effects by promoting maintenance of body weight and muscle mass leading to a reduction of inflammation.<sup>137</sup> Another mouse model with neuroblastoma xenografts shows a significant decrease in neoplastic growth when exposed to low-dose chemotherapy in combination with a KD diet.<sup>138</sup> Despite the evidence of anti-neoplastic activity of the KD in animal models, the data in humans are lacking (Table 1).<sup>135</sup>

**Limitations.** Despite the promising effects of the KD, this regimen risks potential side effects including lethargy, nausea, and vomiting, in addition to hypoglycemia.<sup>126</sup> These side effects are not universal but could limit one’s ability to adhere to the KD. In addition, the high fat content of KD may not be well tolerated by some individuals, with some studies showing long-term increases in serum total cholesterol<sup>139</sup> along with renal damage.<sup>140</sup> In addition, some patients experience progressive bone mineral content loss; however, this is likely multifactorial, given the use of steroids and various chemotherapies, in addition to gender discrepancies, that may contribute to bone loss.<sup>141</sup> Although some propose that the KD

**Table 2.** Comparison of dietary interventions.

Dietary intervention	Benefits	Limitations
Western diet	None	Low nutritional density Associated with prostate, breast, and colorectal cancer Associated with chronic diseases
Caloric Restriction	Reduction in oxidative stress, inflammation, and growth factors (i.e. IGF-I and Ras/MAPK) Improved insulin sensitivity and glucose tolerance Decreased leptin levels Promotes autophagy Decreased angiogenesis	Excessive weight loss Risk of cachexia Risk of malnutrition
Intermittent fasting	Associated with improved chemotherapy-associated side effects Improved insulin sensitivity and glucose tolerance Decreased growth factors (i.e. IGF-I and Ras/MAPK) Decrease anabolic metabolism (termed differential stress resistance) Increased AMPK	Excessive weight loss Risk of cachexia Risk of malnutrition
Ketogenic diet	Increased ketosis Decreased inflammation and growth factors (i.e. IGF-I) Inhibition of tumorigenesis Utilization of Warburg effect Selective increased oxidative stress in cancer cells	Weight loss Hypoglycemia, nausea, vomiting, and lethargy Increase in serum cholesterol Progressive bone loss

IGF-I: insulin-like growth factor-I; MAPK: mitogen-activated protein kinase; AMPK: 5' adenosine monophosphate-activated protein kinase.

can lead to weight loss,<sup>129,142</sup> more recent data suggest that the KDs may actually prevent cachexia and maintain body weight.<sup>137</sup> Regardless, more studies are needed to further illustrate the utility and adverse effects of the KD (Table 2).

## Other dietary regimens under exploration

### *Mediterranean diet*

The Mediterranean diet (MedD) has gained attention as a healthy diet to reduce the risk of cancer. Schwingshackl and Hoffmann<sup>143</sup> provide a comprehensive review on the proposed beneficial effects of the MedD on overall risk of cancer. The MedD is common in countries bordering the Mediterranean Sea. It is defined by a high consumption of plant-based foods, whole grain products, vegetables, fruits, nuts, and legumes along with a regular intake of fish and seafood, while eggs and red/processed meats are limited. Alcohol consumption is moderate, with a preference for red wine, and olive oil serves as a predominant form of fat.<sup>143</sup>

The supposed protective effects of the MedD are not due to any single dietary component but rather the cumulative pattern. Higher fruit and vegetable consumption affects inflammation, redox reactions, and various metabolic processes that may exert anti-cancer effects and promote healthy weight management.<sup>144</sup> Whole grains contain phytic acids and fiber that bind and neutralize carcinogens in the GI tract.<sup>145</sup> Olive oil contains polyphenols, which contribute anti-inflammatory and anti-oxidant effects.<sup>146</sup> The role of dairy products is uncertain and may increase risk of prostate

cancer,<sup>147</sup> but calcium and protein in dairy may also illicit anti-neoplastic effects.<sup>148</sup> The MedD reduces intake of red meats, which are pro-inflammatory and pro-oxidative.<sup>149</sup> The benefits of alcohol are controversial since the evidence with moderate consumption and cancer risk is mixed.<sup>150,151</sup> Evidently, the MedD is a complex diet with numerous components that may exert individual effects on cancer protection and cancer risk.

Overall, there was an observed inverse association between adherence to MedD and cancer mortality. The strongest results were seen in colorectal cancer,<sup>143</sup> with smaller associations seen in cancers of the breast, gastric, liver, gallbladder, head and neck, and prostate.<sup>143,152</sup> While results are promising, exact interpretation is difficult since there is no clear-cut definition of an MedD since it varies from region to region based on ethnic, cultural, religious, and economic factors. Again, this is because the MedD is not a discrete regimen, but rather a collection of food practices seen in populations that border the Mediterranean Sea.<sup>153</sup> As such, future studies might focus on identifying a more analytically illuminating definition of the MedD that may help delineate its putative beneficial effects.

### *Japanese diet*

Individuals from Japan have a lower incidence of various cancers, especially those termed fat-related cancers of the colon, breast, prostate, and ovary.<sup>154</sup> Inhabitants of Okinawa, who historically consume significantly fewer calories than those living on the main islands, have lower death rates from cancer and other chronic conditions compared with Japanese

living in the main lands.<sup>155</sup> For Japanese individuals who moved from Japan to Hawaii, the incidence of stomach cancer decreased while the rates of breast, colon, and prostate cancer increased in just one generation.<sup>156</sup> In the last 40 years, the incidence of colon cancer has increased 9.4 times for males and 4.7 times for females as Japanese have adopted a more Western dietary pattern.<sup>157</sup>

The lower incidence of malignancies is thought to stem from the makeup of the traditional Japanese diet, which is characterized by a low intake of fats and oils, along with a low intake ratio of n-6 polyunsaturated fatty acids (PUFAs) versus n-3 PUFAs.<sup>154</sup> In addition, other components of the Japanese diet, such as higher intake of vegetables and dietary fiber, may contribute to the lower cancer rates.<sup>158</sup> Of interest is miso soup, which contains wakame, a vegetable rich in fucoxanthin that may have protective effects against gastric cancer.<sup>159</sup> Japanese individuals also demonstrate a higher intake of green tea, which is rich in flavonoids and may have anti-oxidant effects.<sup>160</sup> Soy products contain isoflavones and saponins that may have similar beneficial effects.<sup>161</sup> Together, these individual components of the Japanese diet are hypothesized to establish the protective roles of this dietary regimen in cancer risk.

A precise characterization of a Japanese diet is difficult to achieve, and just why it is associated with lower incidence of malignancies has been puzzling. Regardless, further studies are warranted to elucidate possible mechanisms behind its apparent protective effects.

### Vegan diet

A vegetarian diet removes any meat, poultry, and fish from one's diet. A vegan diet further removes all animal products, including dairy or eggs.<sup>162</sup> Overall, vegan diets are high in fiber, magnesium, folic acid, iron, and vitamin C and E, and low in overall calories, saturated fats, zinc, calcium, vitamin D, and vitamin B12.<sup>163</sup> The vegan diet has been associated with a wide variety of health benefits, including lower risk of cardiovascular disease, obesity, and type II diabetes.<sup>164</sup> Of special interest in this review is the lower risk of cancer in patients who follow a vegan diet.

There are several proposed mechanisms for the protective anti-neoplastic effects of a plant-based diet. The body mass index (BMI) of individuals who follow a vegan diet is much lower;<sup>163</sup> thus, the risk of obesity-related cancers, such as colorectal, breast, and prostate cancers, is decreased. In addition, vegan diets consist of a higher proportion of fruits and vegetables, which contain phytochemicals and anti-oxidants, in addition to fiber, flavonoids, and vitamin C, which are all proposed to have protective effects against the development of malignancy.<sup>165–167</sup> Of important consideration is the increased intake of phytochemicals, which are abundant in plants, and the decreased intake of red/processed meats. In animal models and in vitro studies, phytochemicals have been shown to induce apoptosis, arrest cell growth, and decrease angiogenic potential, though beneficial effects have

not been shown to be consistent across studies.<sup>168,169</sup> Red meat has been strongly associated with the development of colorectal cancer,<sup>170</sup> in addition to malignancies of the esophagus, liver, and lung.<sup>149</sup> Another characteristic of a vegan diet includes high consumption of legumes, which may decrease risk of prostate cancer.<sup>171</sup> A differentiating factor between the vegetarian diet and vegan diet is the absence of eggs in the latter, which have been associated with an increased risk of pancreatic cancer.<sup>172</sup> Evidently, the cumulative effects of the vegan diet, due to food items that are consumed in abundance and food items that are avoided, contribute to the potentially anti-cancer properties of this dietary regimen.

Overall, following a vegan diet appears to provide a variety of health benefits. Although the literature is deficient in clinical trials that assess the relationship between plant-based diets and cancers, data thus far suggest that vegan and vegetarian diets are nonetheless protective against cancer, with a net 10%–12% reduction in overall cancer risk.<sup>173</sup> As such, further research is warranted to explore the utility of a vegan diet as a lifestyle modification for cancer prevention.

### Conclusion

Expert nutrition groups have issued clinical guidelines for nutritional treatment of cancer patients. These guidelines state that patients should undergo nutrition screening and assessment and receive early nutrition intervention to improve outcomes. However, it appears that there has been an absence of innovative or clinically meaningful techniques. So, where are we really? With unprecedented sophistication in molecular biology, investigational oncology, and computational power, clinical medicine in general and oncologic nutrition in particular have failed to achieve meaningful progress for patients. A casual survey indicates virtually every major “comprehensive cancer center” has a page on cancer nutrition support. The American Cancer Society’s “Nutrition for People with Cancer” website page declares, “Nutrition is an important part of cancer treatment. Eating the right kinds of foods during and after treatment can help you feel better and stay stronger.” While the internet material is, of course, intended for patients, its quixotic but superficial character speaks volumes. Upon review of the website information and firsthand assessment of clinical reality, it may be reasonably concluded that there is a strong conventional wisdom that the pathology of cancers can result in malnutrition, that cancer treatments often result in malnutrition, and that chronic undernutrition and overnutrition can have an impact on either accelerating or reducing cancer risk or tumor burden (Table 2).

### Declaration of conflicting interests

The author(s) declared no potential conflicts of interest with respect to the research, authorship, and/or publication of this article.

### Funding

The author(s) received no financial support for the research, authorship, and/or publication of this article.

## ORCID iDs

Ashley Gray  <https://orcid.org/0000-0002-4355-2716>

Peter Pressman  <https://orcid.org/0000-0002-6636-8161>

## References

- National Cancer Statistics Annual Report to the Nation, 2018, [https://seer.cancer.gov/report\\_to\\_nation/statistics.html](https://seer.cancer.gov/report_to_nation/statistics.html)
- Cronin KA, Lake AJ, Scott S, et al. Annual report to the nation on the status of cancer, Part I: national cancer statistics. *Cancer* 2018; 124(13): 2785–2800, <http://doi.wiley.com/10.1002/cncr.31551>
- Hales CM, Carroll MD, Fryar CD, et al. Prevalence of obesity among adults and youth: United States, 2015–2016 key findings data from the national health and nutrition examination survey, 2015, [https://www.cdc.gov/nchs/data/databriefs/db288\\_table.pdf#1](https://www.cdc.gov/nchs/data/databriefs/db288_table.pdf#1)
- Calle EE, Rodriguez C, Walker-Thurmond K, et al. Overweight, Obesity, and Mortality from Cancer in a Prospectively Studied Cohort of U.S. Adults. *N Engl J Med* 2003; 348: 1625–1638.
- Kohler GMC. Continuous cultures of fused cells secreting antibody of predefined specificity. *Nature* 1975; 256: 495–497, <https://www.nature.com/articles/256495a0.pdf>
- Kanker W and Fonds O. Food, nutrition, physical activity, and the prevention of cancer: a global perspective, [https://www.researchgate.net/profile/Geoffrey\\_Cannon/publication/315725512\\_Food\\_Nutrition\\_Physical\\_Activity\\_and\\_the\\_Prevention\\_of\\_Cancer\\_A\\_Global\\_Perspective\\_Summary/links/58df26d9a6fdcc41bf8ea1a1/Food-Nutrition-Physical-Activity-and-the-Prevention-of-Cancer-A-Global-Perspective-Summary.pdf](https://www.researchgate.net/profile/Geoffrey_Cannon/publication/315725512_Food_Nutrition_Physical_Activity_and_the_Prevention_of_Cancer_A_Global_Perspective_Summary/links/58df26d9a6fdcc41bf8ea1a1/Food-Nutrition-Physical-Activity-and-the-Prevention-of-Cancer-A-Global-Perspective-Summary.pdf)
- Kolonel LN, Nomura AM, Hinds MW, et al. Role of diet in cancer incidence in Hawaii. *Cancer Res* 1983; 43(5 Suppl): 2397s–2402s, <http://www.ncbi.nlm.nih.gov/pubmed/6831463>
- McMichael AJ, McCall MG, Hartshorne JM, et al. Patterns of gastro-intestinal cancer in European migrants to Australia: the role of dietary change. *Int J Cancer* 1980; 25(4): 431–437, <http://www.ncbi.nlm.nih.gov/pubmed/7372370>
- Peisch SF, Van Blarigan EL, Chan JM, et al. Prostate cancer progression and mortality: a review of diet and lifestyle factors. *World J Urol* 2017; 35(6): 867–874, <http://www.ncbi.nlm.nih.gov/pubmed/27518576>
- Longo VD and Fontana L. Calorie restriction and cancer prevention: metabolic and molecular mechanisms. *Trends Pharmacol Sci* 2010; 31: 89–98.
- Galet C, Gray A, Said JW, et al. Effects of calorie restriction and IGF-1 receptor blockade on the progression of 22Rv1 prostate cancer xenografts. *Int J Mol Sci* 2013; 14: 14, [www.mdpi.com/journal/ijmsArticle](http://www.mdpi.com/journal/ijmsArticle)
- Fontana L, Partridge L and Longo VD. Extending healthy life span—from yeast to humans. *Science* 2010; 328(5976): 321–326, <http://www.ncbi.nlm.nih.gov/pubmed/20395504>
- Redman LM, Heilbronn LK, Martin CK, et al. Metabolic and behavioral compensations in response to caloric restriction: implications for the maintenance of weight loss. *PLoS One* 2009; 4(2): e4377, <http://www.ncbi.nlm.nih.gov/pubmed/19198647>
- Gill JG, Piskounova E and Morrison SJ. Cancer, oxidative stress, and metastasis. *Cold Spring Harb Symp Quant Biol* 2016; 81: 163–175, <http://www.ncbi.nlm.nih.gov/pubmed/28082378>
- Ornish D, Weidner G, Fair WR, et al. Intensive lifestyle changes may affect the progression of prostate cancer, 2005, [https://www.ornish.com/wp-content/uploads/Intensive\\_Lifestyle\\_Changes\\_and\\_Prostate\\_Cancer.pdf](https://www.ornish.com/wp-content/uploads/Intensive_Lifestyle_Changes_and_Prostate_Cancer.pdf)
- IARC Working Group on the Evaluation of Carcinogenic Risks to Humans. Tobacco smoke and involuntary smoking. *IARC Monogr Eval Carcinog Risks Hum* 2004; 83: 1–1438, <http://www.ncbi.nlm.nih.gov/pubmed/15285078>
- Xu R, Barg FK, Emmett EA, et al. Association between mesothelioma and non-occupational asbestos exposure: systematic review and meta-analysis. *Environ Heal* 2018; 17(1): 90, <http://www.ncbi.nlm.nih.gov/pubmed/30567579>
- Kushi LH, Doyle C, McCullough M, et al. American cancer society guidelines on nutrition and physical activity for cancer prevention. *CA Cancer J Clin* 2012; 62(1): 30–67, <http://www.ncbi.nlm.nih.gov/pubmed/22237782>
- Bayo J, Molina R, Pérez J, et al. SEOM clinical guidelines to primary prevention of cancer (2018). *Clin Transl Oncol* 2019; 21: 106–113, <https://doi.org/10.1007/s12094-018-02016-4>
- Fearon K, Strasser F, Anker SD, et al. Definition and classification of cancer cachexia: An international consensus. *Lancet Oncol* 2011; 12: 489–495.
- Tackling the Conundrum of Cachexia in Cancer National Cancer Institute, 2011, <https://www.cancer.gov/about-cancer/treatment/research/cachexia>
- Tisdale MJ. Mechanisms of cancer cachexia. *Physiol Rev* 2009; 89: 381–410.
- Tayek JA. A review of cancer cachexia and abnormal glucose metabolism in humans with cancer. *J Am Coll Nutr* 1992; 11(4): 445–456, <http://www.ncbi.nlm.nih.gov/pubmed/1506607>
- Wang F, Liu H, Hu L, et al. The Warburg effect in human pancreatic cancer cells triggers cachexia in athymic mice carrying the cancer cells. *BMC Cancer* 2018; 18(360): 1–12, <https://doi.org/10.1186/s12885-018-4271-3>
- Evans WK, Makuch R, Clamon GH, et al. Limited impact of total parenteral nutrition on nutritional status during treatment for small cell lung cancer. *Cancer Res* 1985; 45(7): 3347–3353, <http://www.ncbi.nlm.nih.gov/pubmed/2988769>
- Moley JF, Aamodt R, Rumble W, et al. Body cell mass in cancer-bearing and anorexic patients. *J Parenter Enter Nutr* 1987; 11(3): 219–222, <http://www.ncbi.nlm.nih.gov/pubmed/3474427>
- Nguyen TYV, Batterham MJ and Edwards C. Comparison of resting energy expenditure between cancer subjects and healthy controls: a meta-analysis. *Nutr Cancer* 2016; 68(3): 374–387, <http://www.ncbi.nlm.nih.gov/pubmed/27007947>
- Blum KA, Lozanski G and Byrd JC. Adult Burkitt leukemia and lymphoma. *Blood* 2004; 104: 3009–3020.
- Roesch K, Hasenclever D and Scholz M. Modelling lymphoma therapy and outcome. *Bull Math Biol* 2014; 76(2): 401–430, <http://www.ncbi.nlm.nih.gov/pubmed/24338592>
- Warburg O, Wind F and Negelein E. The metabolism of tumors in the body. *J Gen Physiol* 1927; 8(6): 519–530, <http://www.ncbi.nlm.nih.gov/pubmed/19872213>
- Semenza GL and Wang GL. A nuclear factor induced by hypoxia via de novo protein synthesis binds to the human erythropoietin gene enhancer at a site required for transcriptional activation. *Mol Cell Biol* 1992; 12(12): 5447–5454, <http://www.ncbi.nlm.nih.gov/pubmed/1448077>

32. Bui T and Thompson CB. Cancer's sweet tooth. *Cancer Cell* 2006; 9(6): 419–420, <http://www.ncbi.nlm.nih.gov/pubmed/16766260>
33. Kim J, Tchernyshyov I, Semenza GL, et al. HIF-1-mediated expression of pyruvate dehydrogenase kinase: a metabolic switch required for cellular adaptation to hypoxia. *Cell Metab* 2006; 3(3): 177–185, <http://www.ncbi.nlm.nih.gov/pubmed/16517405>
34. Waterhouse C and Keilson J. Cori cycle activity in man. *J Clin Invest* 1969; 48(12): 2359–2366, <http://www.ncbi.nlm.nih.gov/pubmed/5355347>
35. Straub RH, Cutolo M, Buttgereit F, et al. Review: energy regulation and neuroendocrine-immune control in chronic inflammatory diseases. *J Intern Med* 2010; 267(6): 543–560, <http://www.ncbi.nlm.nih.gov/pubmed/20210843>
36. Pepys MB, Hirschfield GM, Tennent GA, et al. Targeting C-reactive protein for the treatment of cardiovascular disease. *Nature* 2006; 440(7088): 1217–1221, <http://www.nature.com/articles/nature04672>
37. Fearon KC, Barber MD, Falconer JS, et al. Pancreatic cancer as a model: inflammatory mediators, acute-phase response, and cancer cachexia. *World J Surg* 1999; 23(6): 584–588, <http://www.ncbi.nlm.nih.gov/pubmed/10227928>
38. Tijerina AJ. The biochemical basis of metabolism in cancer cachexia. *Dimens Crit Care Nurs* 2004; 23(6): 237–243, <http://www.ncbi.nlm.nih.gov/pubmed/15586034>
39. Giordano A, Calvani M, Petillo O, et al. Skeletal muscle metabolism in physiology and in cancer disease. *J Cell Biochem* 2003; 90(1): 170–186, <http://www.ncbi.nlm.nih.gov/pubmed/12938166>
40. Narsale AA and Carson JA. Role of interleukin-6 in cachexia. *Curr Opin Support Palliat Care* 2014; 8(4): 321–327, <http://www.ncbi.nlm.nih.gov/pubmed/25319274>
41. Torelli GF, Meguid MM, Moldawer LL, et al. Use of recombinant human soluble TNF receptor in anorectic tumor-bearing rats. *Am J Physiol Integr Comp Physiol* 1999; 277(3): R850–R855, <http://www.ncbi.nlm.nih.gov/pubmed/10484503>
42. Tisdale MJ. Biology of cachexia. *J Natl Cancer Inst* 1997; 89(23): 1763–1773, <http://www.ncbi.nlm.nih.gov/pubmed/9392617>
43. Patra SK and Arora S. Integrative role of neuropeptides and cytokines in cancer anorexia–cachexia syndrome. *Clin Chim Acta* 2012; 413(13–14): 1025–1034, <https://www.sciencedirect.com/science/article/pii/S0009898111006723?via%3Dihub>
44. McCarthy HD, McKibbin PE, Perkins AV, et al. Alterations in hypothalamic NPY and CRF in anorectic tumor-bearing rats. *Am J Physiol* 1993; 264(4 Pt 1): E638–E643, <http://www.ncbi.nlm.nih.gov/pubmed/8476042>
45. Chance WT, Balasubramaniam A, Dayal R, et al. Hypothalamic concentration and release of neuropeptide Y into microdialysates is reduced in anorectic tumor-bearing rats. *Life Sci* 1994; 54(24): 1869–1874, <https://www.sciencedirect.com/science/article/pii/0024320594901449>
46. Chance WT, Balasubramaniam A, Thompson H, et al. Assessment of feeding response of tumor-bearing rats to hypothalamic injection and infusion of neuropeptide Y. *Peptides* 1996; 17(5): 797–801, <https://www.sciencedirect.com/science/article/pii/0196978196001088>
47. Friedman JM and Halaas JL. Leptin and the regulation of body weight in mammals. *Nature* 1998; 395(6704): 763–770, <http://www.nature.com/articles/27376>
48. Sarraf P, Frederich RC, Turner EM, et al. Multiple cytokines and acute inflammation raise mouse leptin levels: potential role in inflammatory anorexia. *J Exp Med* 1997; 185(1): 171–175, <http://www.ncbi.nlm.nih.gov/pubmed/8996253>
49. Finck BN, Kelley KW, Dantzer R, et al. In Vivo and In Vitro Evidence for the Involvement of Tumor Necrosis Factor- $\alpha$  in the Induction of Leptin by Lipopolysaccharide 1. *Endocrinology* 1998; 139(5): 2278–2283, <https://academic.oup.com/endo/article-lookup/doi/10.1210/endo.139.5.6012>
50. Ramos EJB, Suzuki S, Marks D, et al. Cancer anorexia-cachexia syndrome: cytokines and neuropeptides. *Curr Opin Clin Nutr Metab Care* 2004; 7(4): 427–434, <http://www.ncbi.nlm.nih.gov/pubmed/15192446>
51. Tong H, Isenring E and Yates P. The prevalence of nutrition impact symptoms and their relationship to quality of life and clinical outcomes in medical oncology patients. *Support Care Cancer* 2009; 17(1): 83–90, <http://www.ncbi.nlm.nih.gov/pubmed/18551322>
52. Fearon KC, Voss AC, Hustead DS, et al. Definition of cancer cachexia: effect of weight loss, reduced food intake, and systemic inflammation on functional status and prognosis. *Am J Clin Nutr* 2006; 83(6): 1345–1350, <http://www.ncbi.nlm.nih.gov/pubmed/16762946>
53. Fuchs N, Bielack SS, Epler D, et al. Long-term results of the co-operative German-Austrian-Swiss osteosarcoma study group's protocol COSS-86 of intensive multidrug chemotherapy and surgery for osteosarcoma of the limbs. *Ann Oncol Off J Eur Soc Med Oncol* 1998; 9(8): 893–899, <http://www.ncbi.nlm.nih.gov/pubmed/9789613>
54. Ferreri AJM, Reni M, Dell'Oro S, et al. Treatment with high-dose methotrexate, vincristine and procarbazine, without intrathecal chemotherapy, followed by consolidation radiotherapy for primary central nervous system lymphoma in immunocompetent patients combined. *Oncology* 2001; 60(2): 134–140, <http://www.ncbi.nlm.nih.gov/pubmed/11244328>
55. Farber S, Diamond LK, Mercer RD, et al. Temporary remissions in acute leukemia in children produced by folic acid antagonist, 4-aminopteroyl-glutamic acid (Aminopterin). *N Engl J Med* 1948; 238(23): 787–793, <http://www.ncbi.nlm.nih.gov/pubmed/18860765>
56. Kaye SB. New antimetabolites in cancer chemotherapy and their clinical impact. *British Journal of Cancer* 1998, <http://images.biomedsearch.com/9717984/brjancer00009-0006.pdf?AWSAccessKeyId=AKIAIBOKHYOLP4MBMRGQ&Expires=1549929600&Signature=8xSuXBSQtSx1C7zk7I9HhDtJkI%3D>
57. Marina N and Children's oncology group appendix for AOST0331. A randomized trial of the European and American osteosarcoma study group to optimize treatment strategies for resectable osteosarcoma based on histological response to pre-operative chemotherapy (IND# 12697). A Phase III Intergroup Study, 2005, <https://members.childrensoncologygroup.org>
58. Longley DB, Harkin DP and Johnston PG. 5-Fluorouracil: mechanisms of action and clinical strategies. *Nat Rev Cancer* 2003; 3(5): 330–338, <http://www.nature.com/articles/nrc1074>
59. Nadal JC, Van Groeningen CJ, Pinedo HM, et al. In vivo potentiation of 5-fluorouracil by leucovorin in murine colon carcinoma. *Biomed Pharmacother* 1988; 42(6): 387–393, <http://www.ncbi.nlm.nih.gov/pubmed/3064823>
60. Wright JE, Dreyfuss A, el-Magharbel I, et al. Selective expansion of 5,10-methylenetetrahydrofolate pools and modulation of 5-fluorouracil antitumor activity by leucovorin in vivo.

- Cancer Res* 1989; 49(10): 2592–2596, <http://www.ncbi.nlm.nih.gov/pubmed/2785434>
61. Arshad A, Isherwood J, Mann C, et al. Intravenous  $\omega$ -3 fatty acids plus gemcitabine. *J Parenter Enter Nutr* 2017; 41(3): 398–403, <http://www.ncbi.nlm.nih.gov/pubmed/26220200>
  62. Basourakos SP, Li L, Aparicio AM, et al. Combination platinum-based and DNA damage response-targeting cancer therapy: evolution and future directions. *Curr Med Chem* 2017; 24(15): 1586–1606, <http://www.ncbi.nlm.nih.gov/pubmed/27978798>
  63. Reed E. Platinum-DNA adduct, nucleotide excision repair and platinum based anti-cancer chemotherapy. *Cancer Treat Rev* 1998; 24(5): 331–344, <http://www.ncbi.nlm.nih.gov/pubmed/9861196>
  64. Hu YJ, Chen Y, Zhang YQ, et al. The protective role of selenium on the toxicity of cisplatin-contained chemotherapy regimen in cancer patients. *Biol Trace Elem Res* 1997; 56(3): 331–341, <http://www.ncbi.nlm.nih.gov/pubmed/9197929>
  65. Sieja K and Talerczyk M. Selenium as an element in the treatment of ovarian cancer in women receiving chemotherapy. *Gynecol Oncol* 2004; 93(2): 320–327, <http://www.ncbi.nlm.nih.gov/pubmed/15099940>
  66. Boffetta P and Nyberg F. Contribution of environmental factors to cancer risk. *Br Med Bull* 2003; 68: 71–94.
  67. Fabiani R, Minelli L, Bertarelli G, et al. A western dietary pattern increases prostate cancer risk: a systematic review and meta-analysis. *Nutrients* 2016; 8(10): 626.
  68. Cordain L, Eaton SB, Sebastian A, et al. Origins and evolution of the Western diet: health implications for the 21st century. *Am J Clin Nutr* 2005; 81: 341–354.
  69. Xiao Y, Xia J, Li L, et al. Associations between dietary patterns and the risk of breast cancer: a systematic review and meta-analysis of observational studies. *Breast Cancer Res* 2019; 21: 16.
  70. Moss A and Nalankilli K. The association between diet and colorectal cancer risk: moving beyond generalizations. *Gastroenterology* 2017; 152(8): 1821–1823.
  71. Key TJ, Allen NE, Spencer EA, et al. The effect of diet on risk of cancer. *Lancet* 2002; 360: 861–868.
  72. Tayyem RF, Bawadi HA, Shehadah I, et al. Dietary patterns and colorectal cancer. *Clin Nutr* 2017; 36: 848–852.
  73. O'Flanagan CH, Smith LA, McDonnell SB, et al. When less may be more: calorie restriction and response to cancer therapy. *BMC Med* 2017; 15(1): 106–109.
  74. Hursting SD, Dunlap SM, Ford NA, et al. Calorie restriction and cancer prevention: a mechanistic perspective. *Cancer Metab* 2013; 1(1): 10.
  75. Hursting SD, Smith SM, Lashinger LM, et al. Calories and carcinogenesis: lessons learned from 30 years of calorie restriction research. *Carcinogenesis* 2010; 31: 83–89.
  76. Sugimura T. Nutrition and dietary carcinogens. *Carcinogenesis* 2000; 21: 387–395.
  77. Laron Z. Insulin-like growth factor 1 (IGF-1): a growth hormone. *J Clin Pathol—Mol Pathol* 2001; 54: 311–316.
  78. Hursting SD, Slaga TJ, Fischer SM, et al. Mechanism-based cancer prevention approaches: targets, examples, and the use of transgenic mice. *J Natl Cancer Inst* 1999; 91: 215–225.
  79. Ikeno Y, Bronson RT, Hubbard GB, et al. Delayed occurrence of fatal neoplastic diseases in Ames dwarf mice: correlation to extended longevity. *J Gerontol A Biol Sci Med Sci* 2003; 58(4): 291–296.
  80. Shevah O and Laron Z. Patients with congenital deficiency of IGF-I seem protected from the development of malignancies: a preliminary report. *Growth Horm IGF Res* 2007; 17(1): 54–57.
  81. Ron E, Gridley G, Hrubec Z, et al. Acromegaly and gastrointestinal cancer. *Cancer* 1991; 68: 1673–1677.
  82. Hursting SD, Switzer BR, French JE, et al. The growth hormone: insulin-like growth factor 1 axis is a mediator of diet restriction-induced inhibition of mononuclear cell leukemia in Fischer rats. *Cancer Res* 1993; 53(12): 2750–2757.
  83. Chitnis MM, Yuen JSP, Protheroe AS, et al. The type 1 insulin-like growth factor receptor pathway. *Clinical Cancer Res* 2008; 14: 6364–6370.
  84. Johnson ML, Distelmaier K, Lanza IR, et al. Mechanism by which caloric restriction improves insulin sensitivity in sedentary obese adults. *Diabetes* 2016; 65(1): 74–84.
  85. Simone BA, Dan T, Palagani A, et al. Caloric restriction coupled with radiation decreases metastatic burden in triple negative breast cancer. *Cell Cycle* 2016; 15(17): 2265–2274, <http://dx.doi.org/10.1080/15384101.2016.1160982>
  86. Harhaji-Trajkovic L, Arsikin K, Kravic-Stevovic T, et al. Chloroquine-mediated lysosomal dysfunction enhances the anticancer effect of nutrient deprivation. *Pharm Res* 2012; 29(8): 2249–2263.
  87. Gautron L and Elmquist JK. Sixteen years and counting: an update on leptin in energy balance. *J Clin Invest* 2011; 121: 2087–2093.
  88. Dalamaga M, Diakopoulos KN and Mantzoros CS. The role of adiponectin in cancer: a review of current evidence. *Endocr Rev* 2012; 33(4): 547–594.
  89. Rogozina OP, Bonorden MJL, Seppanen CN, et al. Effect of chronic and intermittent calorie restriction on serum adiponectin and leptin and mammary tumorigenesis. *Cancer Prev Res (Phila)* 2011; 4(4): 568–581.
  90. Jarde T, Perrier S, Vasson MP, et al. Molecular mechanisms of leptin and adiponectin in breast cancer. *Eur J Cancer* 2011; 47(1): 33–43.
  91. Gu L, Wang C, Di Cao C, et al. Association of serum leptin with breast cancer: a meta-analysis. *Medicine (Baltimore)* 2019; 98: e14094.
  92. Tessitore L, Vizio B, Pesola D, et al. Adipocyte expression and circulating levels of leptin increase in both gynaecological and breast cancer patients. *Int J Oncol* 2004; 24(6): 1529–1535.
  93. Yom CK, Lee KM, Han W, et al. Leptin as a potential target for estrogen receptor-positive breast cancer. *J Breast Cancer* 2013; 16(2): 138–145.
  94. Galluzzi L, Pietrocola F, Bravo-San Pedro JM, et al. Autophagy in malignant transformation and cancer progression. *EMBO J* 2015; 34(7): 856–880.
  95. van Niekerk G, Hattingh SM and Engelbrecht AM. Enhanced therapeutic efficacy in cancer patients by short-term fasting: the autophagy connection. *Front Oncol* 2016; 6: 242–247.
  96. White E, Mehnert JM and Chan CS. Autophagy, metabolism, and cancer HHS public access. *Clin Cancer Res* 2015; 21: 5037–5046.
  97. Iwaki T, Urano T and Umemura K. PAI-1, progress in understanding the clinical problem and its aetiology. *Br J Haematol* 2012; 157: 291–298.
  98. Saharinen P, Eklund L, Pulkki K, et al. VEGF and angiotensin signaling in tumor angiogenesis and metastasis. *Trends Mol Med* 2011; 17: 347–362.

99. Prete AD, Allavena P, Santoro G, et al. Molecular pathways in cancer-related inflammation. *Biochem Medica* 2011; 21: 264–275.
100. Divella R, De Luca R, Abbate I, et al. Obesity and cancer: the role of adipose tissue and adipo-cytokines-induced chronic inflammation. *J Cancer* 2016; 7: 2346–2359.
101. O'Rourke RW. Inflammation in obesity-related diseases. *Surgery* 2009; 145: 255–259.
102. Redman LM and Ravussin E. Caloric restriction in humans: impact on physiological, psychological, and behavioral outcomes. *Antioxid Redox Signal* 2011; 14: 275–287.
103. Sun L, Li Y-J, Yang X, et al. Effect of fasting therapy in chemotherapy-protection and tumor-suppression: a systematic review. *Transl Cancer Res* 2017; 6(2): 354–365.
104. Pollak MN. Investigating metformin for cancer prevention and treatment: the end of the beginning. *Cancer Discov* 2012; 2: 778–790.
105. Zhou Y, Zhao RH, Tseng KF, et al. Sirolimus induces apoptosis and reverses multidrug resistance in human osteosarcoma cells in vitro via increasing microRNA-34b expression. *Acta Pharmacol Sin* 2016; 37(4): 519–529.
106. Blättler SM, Cunningham JT, Verdeguer F, et al. Yin Yang 1 deficiency in skeletal muscle protects against rapamycin-induced diabetic-like symptoms through activation of insulin/IGF signaling. *Cell Metab* 2012; 15(4): 505–517, <http://www.ncbi.nlm.nih.gov/pubmed/22482732>
107. Lee C, Raffaghello L, Brandhorst S, et al. Fasting cycles retard growth of tumors and sensitize a range of cancer cell types to chemotherapy. *Sci Transl Med* 2012; 4(124): 124ra27.
108. Raffaghello L, Lee C, Safdie FM, et al. Starvation-dependent differential stress resistance protects normal but not cancer cells against high-dose chemotherapy. *Proc Natl Acad Sci U S A* 2008; 105(24): 8215–8220.
109. Naveed S, Aslam M and Ahmad A. Starvation based differential chemotherapy: a novel approach for cancer treatment. *Oman Med J* 2014; 29(6): 391–398.
110. Raffaghello L, Safdie F, Bianchi G, et al. Fasting and differential chemotherapy protection in patients. *Cell Cycle* 2010; 9(22): 4474–4476.
111. Buono R and Longo VD. Starvation, Stress Resistance, and Cancer. *Trends Endocrinol Metab* 2018; 29(4): 271–280.
112. Di Biase S and Longo VD. Fasting-induced differential stress sensitization in cancer treatment. *Mol Cell Oncol* 2016; 3(3): e1117701.
113. Henning PC, Scofield DE, Rarick KR, et al. Effects of acute caloric restriction compared to caloric balance on the temporal response of the IGF-I system. *Metabolism* 2013; 62(2): 179–187, <http://www.ncbi.nlm.nih.gov/pubmed/22906764>
114. Beauloye V, Willems B, de Coninck V, et al. Impairment of liver GH receptor signaling by fasting. *Endocrinology* 2002; 143(3): 792–800, <http://www.ncbi.nlm.nih.gov/pubmed/11861499>
115. Mihaylova MM and Shaw RJ. The AMPK signalling pathway coordinates cell growth, autophagy and metabolism. *Nat Cell Biol* 2011; 13(9): 1016–1023.
116. Pietrocola F, Pol J, Vacchelli E, et al. Caloric restriction mimetics enhance anticancer immunosurveillance. *Cancer Cell* 2016; 30(1): 147–160.
117. Safdie FM, Dorff T, Quinn D, et al. Fasting and cancer treatment in humans: a case series report. *Aging (Albany NY)* 2009; 1(12): 988–1007.
118. Kawaguchi T, Takemura G, Kanamori H, et al. Prior starvation mitigates acute doxorubicin cardiotoxicity through restoration of autophagy in affected cardiomyocytes. *Cardiovasc Res* 2012; 96(3): 456–465.
119. Caccialanza R, Cereda E, De Lorenzo F, et al. To fast, or not to fast before chemotherapy, that is the question. *BMC Cancer* 2018; 18(1): 10–13.
120. Weber DD, Aminazdeh-Gohari S and Kofler B. Ketogenic diet in cancer therapy. *Aging* 2018; 10: 164–165.
121. Vidali S, Aminzadeh S, Lambert B, et al. Mitochondria: the ketogenic diet—a metabolism-based therapy. *Int J Biochem Cell Biol* 2015; 63: 55–59.
122. Gasior M, Rogawski MA and Hartman AL. Neuroprotective and disease-modifying effects of the ketogenic diet. *Behav Pharmacol* 2006; 17: 431–439.
123. Neal EG, Chaffe H, Schwartz RH, et al. The ketogenic diet for the treatment of childhood epilepsy: a randomised controlled trial. *Lancet Neurol* 2008; 7(6): 500–506.
124. Evangelidou A, Vlachonikolis I, Mihailidou H, et al. Application of a ketogenic diet in children with autistic behavior: pilot study. *J Child Neurol* 2003; 18: 113–118.
125. Mavropoulos JC, Yancy WS, Hepburn J, et al. The effects of a low-carbohydrate, ketogenic diet on the polycystic ovary syndrome: a pilot study. *Nutr Metab* 2005; 2: 35.
126. Allen BG, Bhatia SK, Anderson CM, et al. Ketogenic diets as an adjuvant cancer therapy: history and potential mechanism. *Redox Biol* 2014; 2: 963–970.
127. Vander Heiden MG, Cantley LC and Thompson CB. Understanding the Warburg effect: the metabolic requirements of cell proliferation. *Science* 2009; 324(5930): 1029–1033.
128. Lv M, Zhu X, Wang H, et al. Roles of caloric restriction, ketogenic diet and intermittent fasting during initiation, progression and metastasis of cancer in animal models: a systematic review and meta-analysis. *PLoS ONE* 2014; 9(12): e115147.
129. Klement RJ and Sweeney RA. Impact of a ketogenic diet intervention during radiotherapy on body composition: I. Initial clinical experience with six prospectively studied patients. *BMC Res Notes* 2016; 9: 143.
130. Aykin-Burns N, Ahmad IM, Zhu Y, et al. Increased levels of superoxide and H<sub>2</sub>O<sub>2</sub> mediate the differential susceptibility of cancer cells versus normal cells to glucose deprivation. *Biochem J* 2009; 9: 29–37.
131. Warburg O. On the origin of cancer cells. *Science* 1956; 123: 309–314.
132. Rigo P, Paulus P, Kaschten BJ, et al. Oncological applications of positron emission tomography with fluorine-18 fluorodeoxyglucose. *Eur J Nucl Med* 1996; 23: 1641–1674.
133. Boros LG, Lee PWN, Brandes JL, et al. Nonoxidative pentose phosphate pathways and their direct role in ribose synthesis in tumors: is cancer a disease of cellular glucose metabolism. *Med Hypotheses* 1998; 50: 55–59.
134. Nebeling LC and Lerner E. Implementing a ketogenic diet based on medium-chain triglyceride oil in pediatric patients with cancer. *J Am Diet Assoc* 1995; 95(6): 693–697.
135. Klement RJ. Beneficial effects of ketogenic diets for cancer patients: a realist review with focus on evidence and confirmation. *Med Oncol* 2017; 34(8): 132–115.
136. Khodadadi S, Sobhani N, Mirshekar S, et al. Tumor cells growth and survival time with the ketogenic diet in animal models: a systematic review. *Int J Prev Med* 2017; 8: 35.

137. Nakamura K, Tonouchi H, Sasayama A, et al. A ketogenic formula prevents tumor progression and cancer cachexia by attenuating systemic inflammation in colon 26 tumor-bearing mice. *Nutrients* 2018; 10(2): E206.
138. Morscher RJ, Aminzadeh-Gohari S, Feichtinger R, et al. Inhibition of neuroblastoma tumor growth by ketogenic diet and/or calorie restriction in a CD1-nu mouse model. *PLoS ONE* 2015; 10(6): e0129802.
139. Mosek A, Natour H, Neufeld MY, et al. Ketogenic diet treatment in adults with refractory epilepsy: a prospective pilot study. *Seizure* 2009; 18(1): 30–33.
140. Westerterp-Plantenga MS, Nieuwenhuizen A, Tomé D, et al. Dietary protein, weight loss, and weight maintenance. *Annu Rev Nutr* 2009; 29: 21–41.
141. Bergqvist AGC, Schall JI, Stallings VA, et al. Progressive bone mineral content loss in children with intractable epilepsy treated with the ketogenic diet. *Am J Clin Nutr* 2008; 88(6): 1678–1684.
142. Chung H-Y and Park YK. Rationale, feasibility and acceptability of ketogenic diet for cancer treatment. *J Cancer Prev* 2017; 22(3): 127–134.
143. Schwingshackl L and Hoffmann G. Adherence to Mediterranean diet and risk of cancer: an updated systematic review and meta-analysis of observational studies. *Cancer Med* 2015; 4(12): 1933–1947.
144. Boeing H, Bechthold A, Bub A, et al. Critical review: vegetables and fruit in the prevention of chronic diseases. *Eur J Nutr* 2012; 51: 637–663.
145. Fardet A. New hypotheses for the health-protective mechanisms of whole-grain cereals: what is beyond fibre. *Nutr Res Rev* 2010; 23(1): 65–134.
146. Schwingshackl L, Lampousi AM, Portillo MP, et al. Olive oil in the prevention and management of type 2 diabetes mellitus: a systematic review and meta-analysis of cohort studies and intervention trials. *Nutr Diabetes* 2017; 7(4): e262.
147. Aune D, Navarro Rosenblatt DA, Chan DS, et al. Dairy products, calcium, and prostate cancer risk: a systematic review and meta-analysis of cohort studies. *Am J Clin Nutr* 2015; 101(1): 87–117.
148. Vieira AR, Abar L, Chan DSM, et al. Foods and beverages and colorectal cancer risk: a systematic review and meta-analysis of cohort studies, an update of the evidence of the WCRF-AICR Continuous Update Project. *Ann Oncol* 2017; 28: 1788–1802.
149. Cross AJ, Leitzmann MF, Gail MH, et al. A prospective study of red and processed meat intake in relation to cancer risk. *PLoS Med* 2007; 4(12): e325.
150. Lachenmeier DW and Rehm J. Moderate red wine drinking does not help cut women's breast cancer risk. *J Women Health* 2012; 21: 469–470.
151. Lee JE, Hunter DJ, Spiegelman D, et al. Alcohol intake and renal cell cancer in a pooled analysis of 12 prospective studies. *J Natl Cancer Inst* 2007; 99(10): 801–810.
152. Praud D, Bertuccio P, Bosetti C, et al. Adherence to the Mediterranean diet and gastric cancer risk in Italy. *Int J Cancer* 2014; 134: 2935–2941.
153. Simopoulos AP. The Mediterranean Diets: what is so special about the diet of Greece? The scientific evidence. *J Nutr* 2001; 131(11 Suppl): 3065S–3073S.
154. Tokudome S, Nagaya T, Okuyama H, et al. Japanese versus Mediterranean diets and cancer. *Asian Pac J Cancer Prev* 2000; 1(1): 61–66.
155. Kagawa Y. Impact of westernization on the nutrition of Japanese: changes in physique, cancer, longevity and centenarians. *Prev Med* 1978; 7(2): 205–217.
156. Kolonel LN, Altshuler D and Henderson BE. The multiethnic cohort study: exploring genes, lifestyle and cancer risk. *Nat Rev Cancer* 2004; 4: 519–527.
157. Minami Y, Nishino Y, Tsubono Y, et al. Increase of colon and rectal cancer incidence rates in Japan: trends in incidence rates in Miyagi Prefecture, 1959–1997. *J Epidemiol* 2006; 16(6): 240–248.
158. Wakai K, Date C, Fukui M, et al. Dietary fiber and risk of colorectal cancer in the Japan collaborative cohort study. *Cancer Epidemiol Biomarkers Prev* 2007; 16(4): 668–675.
159. Hirayama T. Relationship of soybean paste soup intake to gastric cancer risk. *Nutr Cancer* 1981; 3: 223–233.
160. Fujiki H, Watanabe T, Sueoka E, et al. Cancer prevention with green tea and its principal constituent, EGCG: from early investigations to current focus on human cancer stem cells. *Mol Cells* 2018; 41: 73–82.
161. Soldati L, Di Renzo L, Jirillo E, et al. The influence of diet on anti-cancer immune responsiveness. *J Transl Med* 2018; 16: 75.
162. Key TJ, Appleby PN and Rosell MS. Health effects of vegetarian and vegan diets. *Proc Nutr Soc* 2006; 65(1): 35–41.
163. Davey GK, Spencer EA, Appleby PN, et al. EPIC–Oxford: lifestyle characteristics and nutrient intakes in a cohort of 33 883 meat-eaters and 31 546 non meat-eaters in the UK. *Public Health Nutr* 2003; 6(3): 259–269.
164. American Dietetic Association; Dietitians of Canada. Position of the American Dietetic Association/Dietitians of Canada: vegetarian diets. *J Am Diet Assoc* 2003; 103: 748–765.
165. Liu RH. Potential synergy of phytochemicals in cancer prevention: mechanism of action. *J Nutr* 2004; 134(12 Suppl.): 3479S–3485S.
166. *Food nutrition, physical activity, the prevention of cancer: a global perspective*. Washington, DC: AICR, 2008.
167. Craig WJ. Health effects of vegan diets. *Am J Clin Nutr* 2009; 89: 1627S–1633S.
168. Vissers MCM and Das AB. Potential mechanisms of action for vitamin C in cancer: reviewing the evidence. *Front Physiol* 2018; 9: 809.
169. Wang H, Oo Khor T, Shu L, et al. Plants vs. cancer: a review on natural phytochemicals in preventing and treating cancers and their druggability. *Anticancer Agents Med Chem* 2012; 12: 1281–1305.
170. Aykan NF. Red meat and colorectal cancer. *Oncol Rev* 2015; 9: 288.
171. Li J and Mao Q. Legume intake and risk of prostate cancer: a meta-analysis of prospective cohort studies. *Oncotarget* 2017; 8(27): 44776–44784.
172. Chan JM, Wang F and Holly EA. Pancreatic cancer, animal protein and dietary fat in a population-based study, San Francisco Bay Area, California. *Cancer Causes Control* 2007; 18(10): 1153–1167.
173. Lanou AJ and Svenson B. Reduced cancer risk in vegetarians: an analysis of recent reports. *Cancer Manag Res* 2010; 3: 1–8.