

Research article

Open Access

# Homopolymer tract length dependent enrichments in functional regions of 27 eukaryotes and their novel dependence on the organism DNA (G+C)% composition

Yue Zhou<sup>1</sup>, Jeffrey W Bizzaro<sup>2</sup> and Kenneth A Marx\*<sup>2</sup>

Address: <sup>1</sup>Division of Endocrinology, Gerontology, and Metabolism, Stanford University School of Medicine, Stanford, CA, USA and <sup>2</sup>Center for Intelligent Biomaterials, Department of Chemistry, University of Massachusetts, Lowell, MA, USA

Email: Yue Zhou - yuezhou@stanford.edu; Jeffrey W Bizzaro - jeff@bioinformatics.org; Kenneth A Marx\* - kenneth\_marx@uml.edu

\* Corresponding author

Published: 14 December 2004

Received: 22 February 2004

BMC Genomics 2004, 5:95 doi:10.1186/1471-2164-5-95

Accepted: 14 December 2004

This article is available from: <http://www.biomedcentral.com/1471-2164/5/95>

© 2004 Zhou et al; licensee BioMed Central Ltd.

This is an Open Access article distributed under the terms of the Creative Commons Attribution License (<http://creativecommons.org/licenses/by/2.0>), which permits unrestricted use, distribution, and reproduction in any medium, provided the original work is properly cited.

## Abstract

**Background:** DNA homopolymer tracts, poly(dA).poly(dT) and poly(dG).poly(dC), are the simplest of simple sequence repeats. Homopolymer tracts have been systematically examined in the coding, intron and flanking regions of a limited number of eukaryotes. As the number of DNA sequences publicly available increases, the representation (over and under) of homopolymer tracts of different lengths in these regions of different genomes can be compared.

**Results:** We carried out a survey of the extent of homopolymer tract over-representation (enrichment) and over-proportional length distribution (above expected length) primarily in the single gene documents, but including some whole chromosomes of 27 eukaryotes across the (G+C)% composition range from 20 – 60%. A total of  $5.2 \times 10^7$  bases from 15,560 cleaned (redundancy removed) sequence documents were analyzed. Calculated frequencies of non-overlapping long homopolymer tracts were found over-represented in non-coding sequences of eukaryotes. Long poly(dA).poly(dT) tracts demonstrated an exponential increase with tract length compared to predicted frequencies. A novel negative slope was observed for all eukaryotes between their (G+C)% composition and the threshold length N where poly(dA).poly(dT) tracts exhibited over-representation and a corresponding positive slope was observed for poly(dG).poly(dC) tracts. Tract size thresholds where over-representation of tracts in different eukaryotes began to occur was between 4 – 11 bp depending upon the organism (G+C)% composition. The higher the GC%, the lower the threshold N value was for poly(dA).poly(dT) tracts, meaning that the over-representation happens at relatively lower tract length in more GC-rich surrounding sequence. We also observed a novel relationship between the highest over-representations, as well as lengths of homopolymer tracts in excess of their random occurrence expected maximum lengths.

**Conclusions:** We discuss how our novel tract over-representation observations can be accounted for by a few models. A likely model for poly(dA).poly(dT) tract over-representation involves the known insertion into genomes of DNA synthesized from retroviral mRNAs containing 3' polyA tails. A proposed model that can account for a number of our observed results, concerns the origin of the isochore nature of eukaryotic genomes via a non-equilibrium GC% dependent mutation rate mechanism. Our data also suggest that tract lengthening via slip strand replication is not governed by a simple thermodynamic loop energy model.

## Background

DNA homopolymer tracts are the simplest of simple sequence repeats (SSRs); the two types being poly(dA).poly(dT) and poly(dG).poly(dC). They are present in all genomes, but in some eukaryotes they are found at high frequencies indicating that the tracts are highly enriched relative to their random occurrence within a random sequence DNA genome of similar base composition. Homopolymer tracts were previously examined systematically in the coding, intron and flanking regions of the slime mold *D. discoideum* [1]. Only long ( $N > 10$  bp) homopolymer tracts were observed at high frequencies in this AT-rich genome. The non-coding regions were found to be highly over-represented in the large poly(dA).poly(dT) tracts compared to random sequences of equivalent base composition containing tracts at frequencies expected for random occurrence. At shorter sequence lengths ( $2 \text{ bp} < N < 6 \text{ bp}$ ), poly(dG).poly(dC) tracts were over-represented somewhat more than poly(dA).poly(dT) tracts of comparable length.

Although the elongation of SSR tracts may be due to more than one mechanism [2], most often the phenomenon has been attributed to slip-strand replication errors, which occur from the slippage and re-annealing of the nascent strand during DNA replication [3-5]. This is a type of mutation that can be affected by the proofreading function of DNA polymerases [6-8]. For example, it has been shown that the proofreading and repair function for DNA polymerase epsilon is efficient for short homopolymer tracts, but that only the mismatch repair system can prevent frameshift mutations in tracts of length 8 nucleotides or greater [8]. These slip-strand errors, which lead to the formation of longer homopolymer tracts, can have deleterious effects. In coding regions, the mutation can cause frame-shift errors, leading to transcription errors and aberrant protein translation. As would be expected from the triplet codon constraints, there appears to be selection against long homopolymer tracts in coding regions. Marx et al [1] demonstrated that long homopolymer tracts were not present at frequencies higher than expected in the coding regions of *D. discoideum* DNA.

Compared to nonhomopolymer random B-DNA sequences, poly(dA).poly(dT) tracts have a shorter turn, a smaller axial rise, a narrower and deeper minor groove [9], a wider and shallower major groove, and are straighter and more rigid over longer lengths. These characteristics are due to the high propeller twist of the base pairs [10], the maximal overlap/stacking between bases on the same strand, and non-Watson-Crick cross-strand H-bonds between base pairs [9-13]. The result is that long tracts tend to be energetically excluded from nucleosomes [14,15]. In some definitive studies, it was first shown that tracts of critical and longer lengths are excluded from the

reconstituted nucleosome [16]. Other investigators, using native nucleosomes derived from native chicken chromatin, demonstrated that long poly(dA).poly(dT) tracts are excluded from the central core regions [17]. This conclusion received confirmation from a study of the GenBank sequences of *D. discoideum*, where it was demonstrated that long poly(dA).poly(dT) tracts ( $N > 10$  bp) are preferentially spaced at sequence lengths corresponding to the average nucleosome DNA spacing in *D. discoideum* nucleosomes [18]. In this study, adjacent long poly(dA).poly(dT) tracts, combined with their short non-homopolymer spacer sequences, exhibited average total lengths that correspond to *D. discoideum* nucleosomal linker lengths, suggesting their *in vivo* localization in these chromatin regions and avoidance of the nucleosomal core regions.

Certain natural DNA sequences possess tertiary structures exhibiting a significant amount of curvature that is associated with short homopolymer lengths (4 - 6 bp) of poly(dA).poly(dT) [19,20]. Also, bending occurs at the junction of these and nonhomopolymer tracts [12]. When short bent poly(dA).poly(dT) tracts are distributed 10 bp apart, they produce additive long range in-plane bending in the axis of the DNA helix [20,21]. The exact molecular mechanism of this bending behavior is still the subject of considerable experimentation and speculation [22]. DNA bending patterns resulting from spaced poly(dA).poly(dT) tracts have been shown to occur in replication origins and in transcriptional regulatory regions, where a bent configuration is required for activity [23-25].

Poly(dG).poly(dC) tracts form an A-form double-helix. In contrast to poly(dA).poly(dT), the minor groove of these tracts is broad and shallow, while the major groove is deep. But, as with poly(dA).poly(dT) tracts, the tracts are rigid, which leads to the energetic exclusion of poly(dG).poly(dC) from nucleosomes [26,27]. These characteristics are due to the overlap of adjacent guanine bases and the invariant roll angle between them [28].

Beyond their structural properties, studies of homopolymer tracts have revealed some biological functions. The poly(dA).poly(dT) tracts can serve as protein binding sites [29], particularly as upstream promoter elements in the initiation of transcription [30-32] and in recombination [33]. And poly(dG).poly(dC) tracts have been found in certain eukaryotic promoter regions where they are postulated to form 4 stranded G-quartet structures [34].

As the number of DNA sequences publicly available increases, the representation (over and under) of homopolymer tracts in different genomes can be compared. Qualitative comparisons have been made between five eukaryotic and two prokaryotic genomes: *P.*

**Table 1: Summary of the sequence files of the 27 organisms studied**

ORGANISM	ABBR.	DNA type	DOCUMENTS BEFORE CLEAN-UP	DOCUMENTS AFTER CLEAN-UP	TOTAL (bp)	TOTAL GC%
Dictyostelium discoideum	Dd	single genes	492	440	966261	25.70
Plasmodium falciparum	Pf	single genes	1652	790	1065133	27.11
		chromosome II, III	2	2	2007209	19.82
Tetrahymena thermophila	Tt	single genes	109	97	214676	28.89
Candida albicans	Ca	single genes	439	378	959035	35.21
Manduca sexta	Ms	single genes	54	46	119657	35.62
Caenorhabditis elegans	Ce	single genes	234	221	1319875	36.92
Schizosaccharomyces pombe	Spo	single genes	813	720	1346439	37.54
Arabidopsis thaliana	At	single genes	1908	1520	3139637	38.09
Schistosoma mansoni	Sm	single genes	98	74	125605	38.37
Danio rerio	Dr	single genes	339	266	603534	38.60
Saccharomyces cerevisiae	Sc	single genes	2249	928	3815906	38.68
		chromosome I-XVI	16	16	11426263	38.45
Drosophila melanogaster	Dm	single genes	1883	968	3459297	39.88
Strongylocentrotus purpuratus	Spu	single genes	153	113	116647	41.78
Xenopus laevis	Xl	single genes	568	411	805354	41.99
Oryza sativa	Os	single genes	605	507	1514656	44.61
Trypanosoma brucei	Tb	single genes	457	368	1039208	46.17
Fugu rubripes	Fr	single genes	216	181	1737132	46.30
Zea mays	Zm	single genes	629	480	1225027	46.92
Mus musculus	Mm	single genes	9288	5179	11191148	47.36
Anopheles gambiae	Ag	single genes	78	43	73592	48.20
Gallus gallus	Gg	single genes	1868	1061	1910331	50.00
Toxoplasma gondii	Tg	single genes	195	117	284187	50.70
Emericella nidulans	En	single genes	72	62	165648	51.07
Aspergillus niger	An	single genes	215	160	386447	52.65
Neurospora crassa	Nc	single genes	252	217	494046	53.37
Leishmania major	Lm	single genes	89	81	129155	59.11
Chlamydomonas reinhardtii	Cr	single genes	136	114	349624	61.84

*falciparum* (also very AT-rich), *H. sapiens*, *S. cerevisiae*, *C. elegans*, *A. thaliana*, *E. coli* and *M. tuberculosis* [35]. As with *D. discoideum* (1), it was shown in that study that homopolymer tracts occur in the non-coding regions at over-represented frequencies for poly(dA).poly(dT). Poly(dG).poly(dC) tracts were found to be over-represented in some but not all organisms at short lengths. However, over-representation was observed only in the eukaryotic genomes, not the prokaryotes.

In the present study, we have carried out a broad survey of non-overlapping homopolymer tract frequencies in the genomic sequences of 27 eukaryotic organisms across the base composition range from 20–60% (G+C). Within the coding, intron and flanking DNA functional compartments of largely single copy genes from these organisms, we compared the observed poly(dA).poly(dT) and poly(dG).poly(dC) tract frequencies in two size ranges to the tract occurrence frequencies expected for random tract occurrence in DNA compartments of the same base compositions. A large fraction of the 27 eukaryotes exhibited significant over-representations (enrichment) of longer

length ( $N \geq 9$  bp) poly(dA) and poly(dT) tracts in their intron and flanking sequences, but not their coding sequences. This occurred in a novel base composition dependent fashion. A much smaller number of the 27 organisms exhibited significant over-representations of longer length ( $N \geq 9$ ) poly(dG) and poly(dC) tracts. For *P. falciparum* and *S. cerevisiae* single gene containing sequences as well as whole chromosomes, all homopolymer tracts were found to have similar length dependent frequencies and therefore over-representation in their functional compartments.

## Results

The purpose of this study was to reveal similarities and differences in the frequency of occurrence of homopolymer tracts of varying lengths in different eukaryotic sequences across the biological range of base compositions from 20 – 60% (G+C). Primarily single gene containing sequences of 27 organisms were investigated. This was done on purpose since most of the organisms had largely only single gene containing sequences available in the public databases. Restricting our comparative analysis

**Table 2: The (G+C)% in different compartments of the 27 organisms**

ORGANISM	ABBR.	FLANK (bp)	GC%	INTRON (bp)	GC%	CODING (bp)	GC%
Dictyostelium discoideum	Dd	207722	15.26	22407	11.14	621748	30.32
Plasmodium falciparum	Pf	143401	16.27	18597	12.64	840733	29.41
Tetrahymena thermophila	Tt	60095	20.99	8624	20.14	101889	34.37
Candida albicans	Ca	302347	31.26	3035	33.05	631769	36.93
Manduca sexta	Ms	43331	33.38	17299	30.87	21979	47.79
Caenorhabditis elegans	Ce	737951	32.87	121316	33.07	384627	45.45
Schizosaccharomyces pombe	Spo	432364	32.67	22638	30.44	813101	40.41
Arabidopsis thaliana	At	1256492	33.20	270913	32.05	1015490	45.75
Schistosoma mansoni	Sm	37773	36.12	11760	35.94	39913	40.05
Danio rerio	Dr	232819	35.07	41465	34.21	147459	47.90
Saccharomyces cerevisiae	Sc	1124634	36.06	17273	32.90	2356815	40.14
Drosophila melanogaster	Dm	1238086	37.56	227141	39.54	747774	52.85
Strongylocentrotus purpuratus	Spu	38732	36.85	11450	34.43	24405	53.22
Xenopus laevis	Xl	266034	39.32	183822	38.36	164675	48.08
Oryza sativa	Os	567768	40.35	133898	36.74	394283	55.89
Trypanosoma brucei	Tb	120949	43.19	1621	44.97	415684	50.73
Fugu rubripes	Fr	624550	43.85	230616	43.22	342435	54.13
Zea mays	Zm	611822	43.30	114505	41.21	305091	55.88
Mus musculus	Mm	4571933	46.05	1708894	46.75	1475920	53.15
Anopheles gambiae	Ag	29527	42.93	8028	44.33	24151	56.93
Gallus gallus	Gg	563319	50.08	457259	46.15	369315	55.13
Toxoplasma gondii	Tg	100004	50.01	32167	49.49	94260	54.51
Emericella nidulans	En	75257	48.72	2888	47.13	83665	53.12
Aspergillus niger	An	136216	48.46	15832	45.95	188982	56.48
Neurospora crassa	Nc	154422	50.44	18685	48.88	254177	56.07
Leishmania major	Lm	34029	57.27	54	50.00	70014	60.71
Chlamydomonas reinhardtii	Cr	163614	59.70	49607	62.03	106939	66.55

in this fashion ensured that the results for all organisms could be easily compared. A total of 25,109 sequence documents were collected. As we mentioned earlier, there are often a significant level of redundancies in the sequences found in the public databases. CleanUP is a program we used to remove those redundancies, and following its application,  $5.2 \times 10^7$  bases from 15,560 cleaned sequence documents were analyzed and compared [36]. As shown in Table 1 comparing columns before and after application of CleanUP, there are varying levels of redundancies in some of the original collected files for different organisms in the public database. In Table 1, we list the complete name of each organism as well as an abbreviation that is used throughout the following discussion of our Results.

The base compositions of the total sequence population from each organism ranges from a low of 25.70% (G+C) for *D. discoideum* (Dd) to a high of 61.84% for *C. reinhardtii* (Cr). From the standpoint of (G+C)%, the organisms we investigated are not evenly distributed. If we take as the midpoint, *G. gallus* (Gg), whose (G+C)% is exactly 50%, there are only 6 organisms over 50%, while the rest (19 of 27) are all below 50%. This is due to the fact that

there are more available sequenced eukaryotic organisms that are AT-rich than GC-rich. In this study, we dissected DNA sequences into coding, intron and flanking functional compartments as shown in Table 2. In every instance, the non-coding regions (intron and flanking) were found to be significantly more AT-rich than coding sequences.

#### **Long homopolymer tracts are over-represented in non-coding sequences of AT-rich eukaryotes**

The observed frequencies of non-overlapping base  $i$  tracts of length  $N$ ,  $f_{i,N,obs}$ , in different DNA regions were analyzed as a function of tract length  $N$  in all 27 organisms. In Figure 1, we present the results of analyzing all 4 base tracts from Pf, Dm and Nc sequences as representative examples. The total (G+C)% of the DNA analysed from these organisms is 27.11%, 39.88% and 53.37%, respectively, representing typical low, median and high base composition eukaryotes. Very long tracts (high  $N$ ) are rare, leading to low counts and large fluctuations in  $\log(f_{i,N,obs})$ . Therefore, for each organism, any tract count observed to be less than 4 for a given tract length  $N$  was excluded from the data analysis in order to eliminate

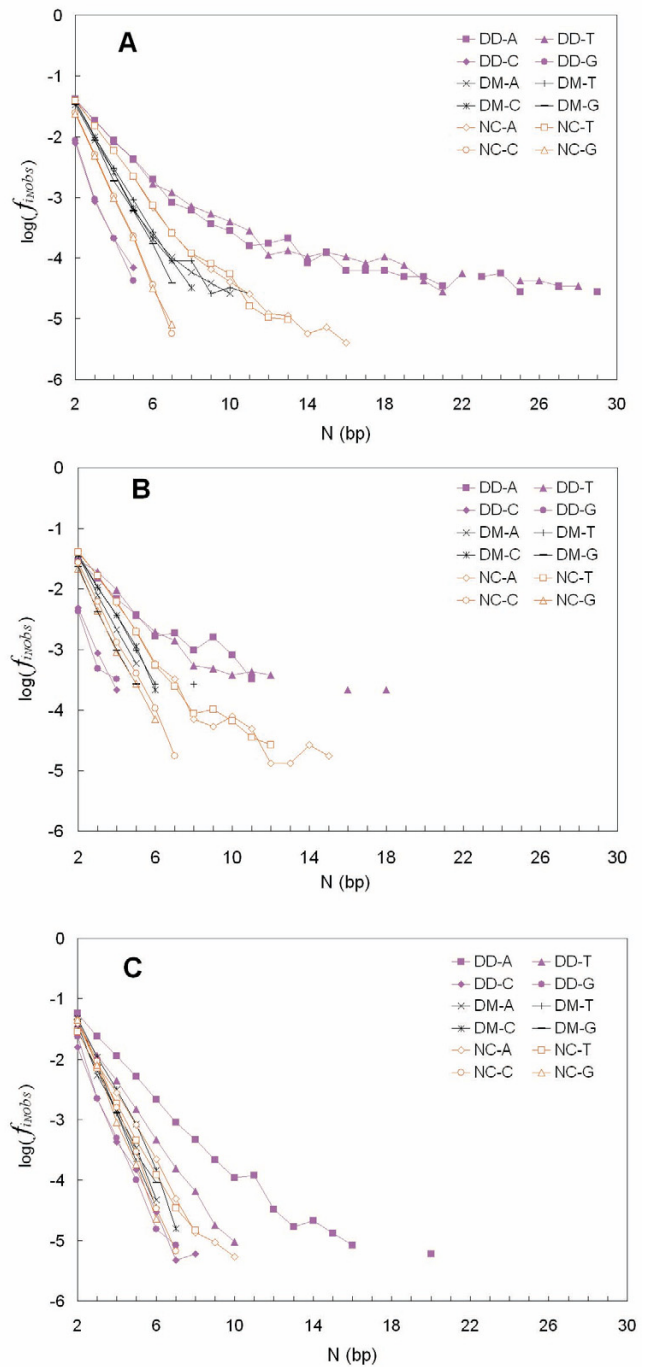
noise in the data. Getting rid of the interference caused by noisy data enhanced and clarified the comparisons we made from slope determinations. Some of the points in Figure 1 are not connected because they did not present contiguous data along the x-axis (tract length N).

From Figure 1A, it is clear that the frequency of poly(dA).poly(dT) tracts in the very AT-rich Pf flanking regions are much higher than Dm and Nc tract frequencies. This becomes more pronounced when the tract length N becomes larger ( $N \geq 7$  bp) and reaches a maximum at around  $N \geq 10$  bp. On the other hand, the frequencies of poly(dG) or poly(dC) tracts in Pf are significantly lower and no differential N dependence is observed. Meanwhile, no significant difference can be observed between Dm and Nc, except for the higher  $f_{iNobs}$  values at longer N in Nc sequences. Similar behavior is also observed in intron sequences in Figure 1B. The over-representation of poly(dA) or poly(dT) tracts in intron regions is also evident at higher N values. However, this behavior is almost non-existent in coding regions (Figure 1C), except for Pf, which is the most AT-rich eukaryote in all the 27 of our survey. This organism exhibited over-representation of poly(dA) tracts in its coding region as well as poly(dT) tracts as we shall see below.

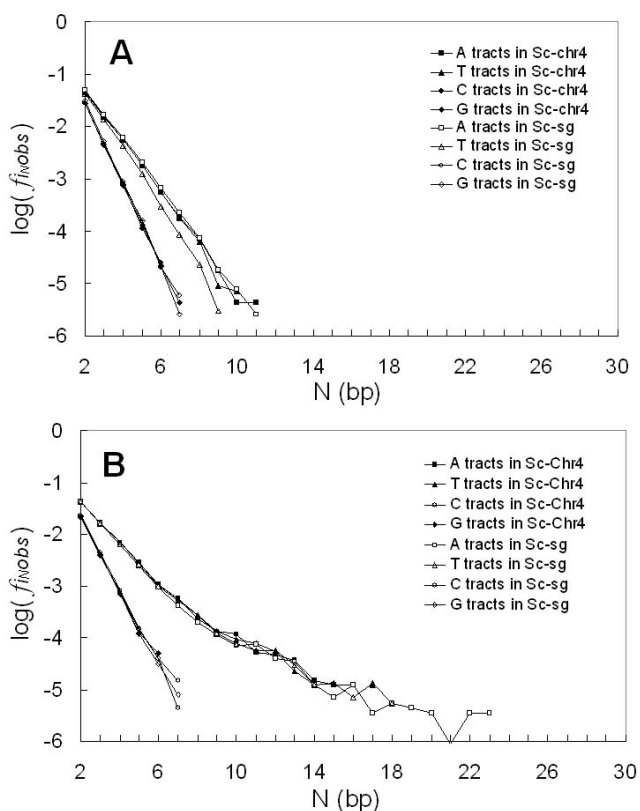
It is also very clear that the longer poly(dA) and poly(dT) tracts, usually of length larger than 20 bp, are only detected in flanking regions. In all cases, the plotted curves exhibited a transition region of changing slope, points falling between tract lengths 6 bp and 9 bp. This behavior, as we have described previously in *D. discoideum* DNA, leads one to conclude that the long poly(dA) and poly(dT) tracts are over-represented relative to random tract occurrence in random DNA sequences of equivalent base composition [1]. This is a fact that we illustrate and quantitate later in this study. By contrast, the nearly linear relationship of points in Figure 1, for all the organisms' tracts of all types at lengths  $N \leq 6$  bp indicates a similarity that differs for each organism only by the individual linear relationships being offset from each other. This is a trivial consequence of the different base compositions of the DNAs, giving rise to frequencies of any given tract at levels near those expected based on random occurrence in that base composition.

**Comparing tract frequencies from single genes with those from whole chromosomes**

In order to confirm that there is consistency in the homopolymer tract frequency levels between single gene data and whole chromosome data in any given organism, we collected single gene data and whole chromosome data separately for representative organisms – Pf and Sc, where fully annotated whole chromosome sequences were available. For Pf, we collected chromosomes II and

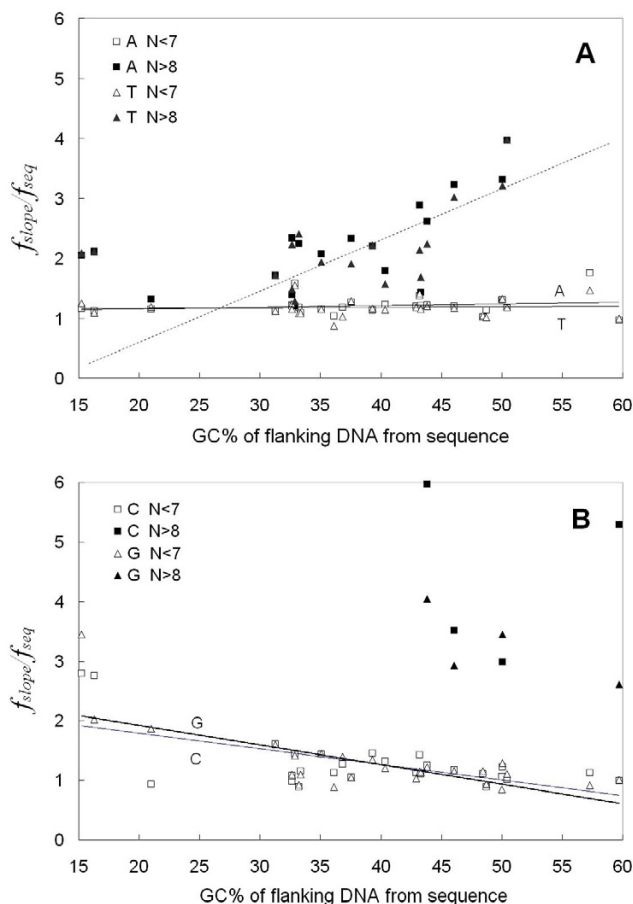


**Figure 1**  
**Comparison of the observed length N dependent poly(dA), poly(dT), poly(dC) and poly(dG) tract frequencies found in sequences from different DNA functional regions in the organisms Pf, Dm and Nc**  
 A. flanking sequences; B. intron sequences; C. coding sequences



**Figure 2**  
**Comparison of the four tract frequencies from Sc chromosome 4 sequences and Sc single gene sequences as a function of N, the tract length, calculated from:** A. coding sequences; B. non-coding sequences. In the legend, "sg" represents "single gene" and "chr" represents "chromosome".

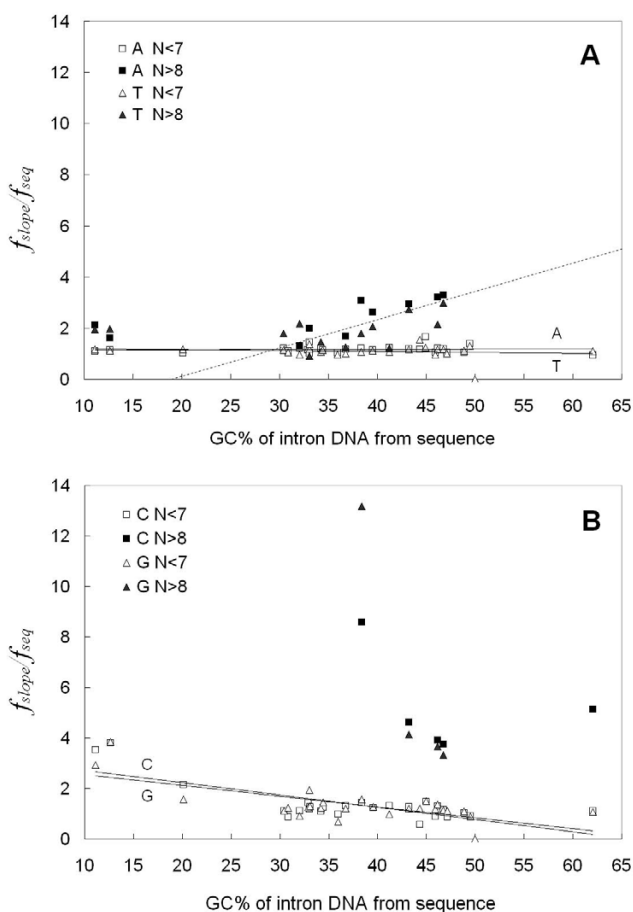
III. For Sc, we collected sequences for all 16 chromosomes. The single gene data were compared to the chromosome data of each organism respectively. For both organisms, the comparison results are similar and, therefore, we only display in Figure 2 representative data here for Sc single gene data compared with Sc chromosome IV, the largest of the 16 chromosomes. Since the whole chromosome data is only annotated with coding and non-coding regions, we combined the results from single gene data for intron and flanking regions, which were previously separated in our Figure 1 analysis, in order to make a consistent comparison with the whole chromosome data. Aside from poly(dT) tracts in coding sequences, the analyses showed no consistent significant differences. Therefore, we judge that our conclusions using single gene data are representative of whole chromosome data for the 27 eukaryotes we analyzed in this survey.



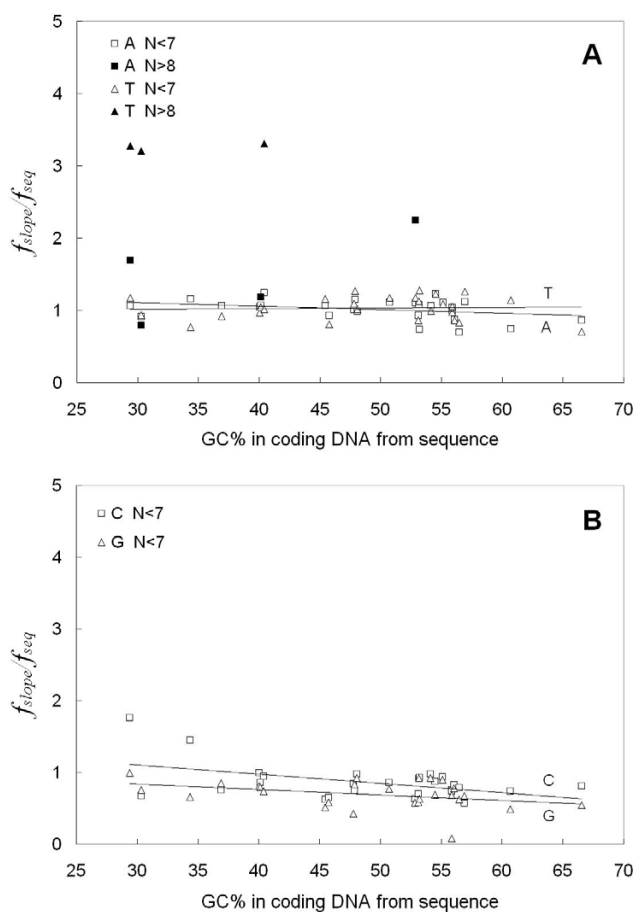
**Figure 3**  
**Comparison of the frequency ratio,  $f_{slope}/f_{seq}$ , to the real (G+C)% of the particular organisms' flanking DNA. The slope is calculated from the slopes of Figure 1 types of graphs for short ( $N \leq 6$  bp) and long ( $N \geq 9$  bp) tract data found in flanking sequences from 27 organisms. A. poly(dA).poly(dT) tracts. The straight solid lines are linear regression fits for short tracts ( $N \leq 6$  bp) of each type and the dashed line ( $R^2 = 0.5591$ ) demonstrates the trend in long ( $N \geq 9$  bp) tracts; B. poly(dG).poly(dC) tracts. The straight lines are linear regression fits for short tracts of each type ( $N \leq 6$  bp).**

**Quantitating the over-representation of tracts**

We next wished to quantitatively compare for all 27 eukaryotes, the differences between the length N dependent frequencies of short tracts ( $N \leq 6$  bp) and long tracts ( $N \geq 9$  bp) of the type that we presented in Figure 1. We designed the data analysis method by separating the Figure 1 x-axis into two regions of different tract behavior:  $N \leq 6$  bp and  $N \geq 9$  bp. The data points in the short tract range and those in the long tract range were treated separately. For short and long tract point regions separately,



**Figure 4**  
**Comparison of the frequency ratio,  $f_{slope}/f_{seq}$ , to the real (G+C)% of the particular organisms' intron DNA. The  $f_{slope}$  is calculated from the slopes of Figure 1 types of graphs for short ( $N \leq 6$  bp) and long ( $N \geq 9$  bp) tract data found in intron sequences from 27 organisms. A. poly(dA).poly(dT) tracts. The straight lines are linear regression fits for short tracts ( $N \leq 6$  bp) of each type and the dashed line ( $R^2 = 0.5474$ ) demonstrates the trend in long ( $N \geq 9$  bp) tracts; B. poly(dG).poly(dC) tracts. The straight lines are linear regression fits for short tracts of each type ( $N \leq 6$  bp).**



**Figure 5**  
**Comparison of the frequency ratio,  $f_{slope}/f_{seq}$ , to the real (G+C)% of the particular organisms' coding DNA. The  $f_{slope}$  is calculated from the slopes of Figure 1 types of graphs for short ( $N \leq 6$  bp) and long ( $N \geq 9$  bp) tract data found in coding sequences from 27 organisms, A. poly(dA).poly(dT) tracts. The straight lines are linear regression fits for short tracts ( $N \leq 6$  bp) of each type; B. poly(dG).poly(dC) tracts. The straight lines are linear regression fits for short tracts ( $N \leq 6$  bp) of each type.**

the average frequency,  $f_{slope}$ , of the tract base  $i$  in the particular genome compartment were calculated. The  $f_{slope}$  parameter is the "effective" base  $i$  frequency for the sequences in that DNA compartment that would give rise to the observed  $\log(f_{i_{Nobs}})$  vs.  $N$  dependent tracts frequency behavior in that region based upon the eqn. [1b] random model. The  $f_{slope}$  is obtained from the inverse of  $P'$ , where the slope  $[-\log(P')]$  is obtained from the  $\log(f_{i_{Nobs}})$  vs.  $N$  type plots in Figure 1, fit by eqn. [1b], as we

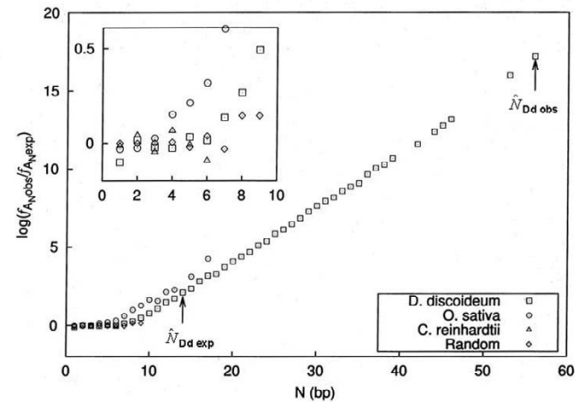
present in Methods and have previously described [1]. This is a model that assumes random occurrence of tracts. Although it is known that DNA sequences do not occur randomly and that 1<sup>st</sup> Order Markov chain behavior can describe some of the behavior of eukaryotic sequences, we have chosen here to compare the occurrence of tracts in real sequences to that of tracts in random DNA of equivalent base composition because the comparison is intuitively easy to grasp. The results from all 27 organisms are presented here in Figures 3, 4 and 5 for flanking, intron and coding sequences respectively. The data are plotted as frequency ratios ( $f_{slope}/f_{seq}$ ; where  $f_{seq}$  is the actual base fre-



quency tabulated from all bases comprising the sequences in the real sequence compartment) plotted versus the overall real (G+C)% of each individual DNA sequence compartment studied. The higher the frequency ratio in Figures 3, 4 and 5, the higher is the enrichment or over-representation of the tract. It is a common feature for all the organisms that when  $N \leq 6$  bp, the ratio is near 1. Therefore, in all the Figures 3,4,5, the trend lines developed by the linear regression fit of only the  $N \leq 6$  bp data have slopes close to zero and intersect the y-axis at a ratio near 1 to 2. The regression lines extrapolating to a ratio near 1.0 (Figure 3A, Figure 4A and Figure 5A) indicate that  $N \leq 6$  bp tracts occur at frequencies expected for the base compositions found in each of the organisms' sequence compartments. Interestingly, this behavior occurs for the poly(dA).poly(dT) tracts in all three functional compartments – coding, intron and flanking DNAs. On the other hand, for  $N \leq 6$  bp poly(dG).poly(dC) tracts of all organisms, the regression lines all have a slightly negative slope, with flanking and intron sequences (Figure 3B and Figure 4B, respectively) exhibiting an intercept ratio of 2 or greater. This clearly indicates a trend to greater over-representation of short poly(dG).poly(dC) tracts in organisms of higher (A+T)% base composition.

For  $N \geq 9$  bp tracts in coding sequences (Figure 5A & 5B), there were not enough tracts to allow calculation of  $f_{slope}$  values from the Figure 1 type data. However, in flanking and intron sequences (Figure 3A and Figure 4A), the ratio was determined and is much higher than 1 for all the organisms, indicating that the poly(dA).poly(dT) tracts are significantly over-represented. The behavior of poly(dA).poly(dT) tracts in both flanking and intron sequences are similar and demonstrate a novel and interesting dependence of over-representation on the base composition of the organism's DNA. Starting at 30 % (G+C) and increasing to 50 % (G+C) (note linear fit trend line), these tracts are increasingly over-represented as the ratio trends from around 1.5 up to 4.0.

For lengths  $N \geq 9$  bp in Figures 3B and 4B, we observed similar behavior for poly(dG).poly(dC) tracts. In a few organisms between 35%–50% (G+C), there is a high ratio of frequencies indicating a high level of over-representation. However, longer poly(dG).poly(dC) tracts are not over-represented and do not occur at long lengths as we show later in nearly as many organisms as we observed for poly(dA).poly(dT) tracts. Therefore, even though there appears to be evidence for a trend in these figures, we have not indicated with a negative slope linear trend line, mirror-image trend behavior to that exhibited by the poly(dA).poly(dT) tracts.



**Figure 6**  
**Comparison of  $f_{obs}$  vs.  $f_{exp}$  calculated for eukaryotes Dd, Os, Cr and a randomly generated sequence as a function of the tract length  $N$ . The  $\hat{N}_{obs}$  and**

**$\hat{N}_{exp}$  values for *D. discoideum* are presented** Due to the small differences exhibited between the organisms when  $N$  is small, we present the small inset figure for the region from  $N = 0-10$  bp enlarged for clarity.

**The over-representation of long poly(dA).poly(dT) tracts exhibit exponential frequency increases compared to predicted values**

In order to show more clearly the genomic over-representation of the long poly(dA) and poly(dT) tracts, we introduced a variable,  $f_{iNexp}$ , representing the predicted frequency of base  $i$  at length  $N$  based on random tract occurrence in DNA of equivalent base composition. Eqn. [2] is used to calculate  $f_{iNexp}$ . The ratio of  $f_{iNobs} / f_{iNexp}$  equals  $R$ , the Threshold. In Figure 6, we plot  $\log R$  vs.  $N$  for only the poly(dA) tract data from Dd, Os, Cr, representing genomes of low, median and high (G+C)% base composition, respectively. Similar comparative data for all 27 organisms was determined but is not shown here. For comparison purposes, we include in Figure 6 the tract frequency results determined for a random sequence of  $10^6$  nucleotides of 50% (G+C) composition generated with a random number generator. Each base position in that random sequence was picked from all 4 bases having equal probability (0.25) of being selected. In the randomly generated sequence, there were no tracts longer than 9 bp. The small inset panel in the upper left corner of the figure presents an enlarged view of  $N$  from 0 to 10. In this panel, as expected, the random sequence exhibits



points with values closely centered around 0 on the y-axis. The only exceptions are for the points  $N = 6$  and higher that are noisy and exhibit fluctuations as high as 0.15, due to the low number of tracts occurring at those sizes. Thus, there are no significant differences between  $\hat{N}_{obs}$  and  $\hat{N}_{exp}$  and  $f_{A_N,obs} = f_{A_N,exp}$ . In contrast, the results from real organisms show very different behaviors. There are two regions, a linear part with slope around 0 when  $N$  is relatively small and an exponentially increasing frequency ratio when  $N$  increases beyond a certain value. In Figure 6, two of the three organisms exhibit this exponentially increasing ratio. *Os* is the first to go above the 0 line when  $N$  is around 3 bp. A similar change to an exponentially increasing ratio was observed for *Dd* at a different  $N$  value of about 7 bp. This is the same tract size where we previously observed that poly(dA) and poly(dT) tracts begin to exhibit over-representation [1]. Of all the organisms, the *Dd* data exhibited one of the most significant over-representation levels- a  $10^{13}$ -fold enrichment of these tracts occurring at lengths about 45 bp.

Another significant feature of the *Dd* data, is the large difference between  $\hat{N}_{obs}$  and  $\hat{N}_{exp}$ . This indicates that a high over-representation of long poly(dA).poly(dT) tracts likely occurs in this organism, as we saw in Figure 2. It also makes clear that this organism utilizes poly(dA).poly(dT) tracts to sizes at least 40 bp longer in length than would be expected,  $\hat{N}_{exp} = 14$  bp, based upon the random tract occurrence calculated from its base composition. It is also the highest over-proportional tract size we observed, as we present later.

#### **Poly(dA).poly(dT) tracts show inverse correlation between (G+C)% composition and threshold value**

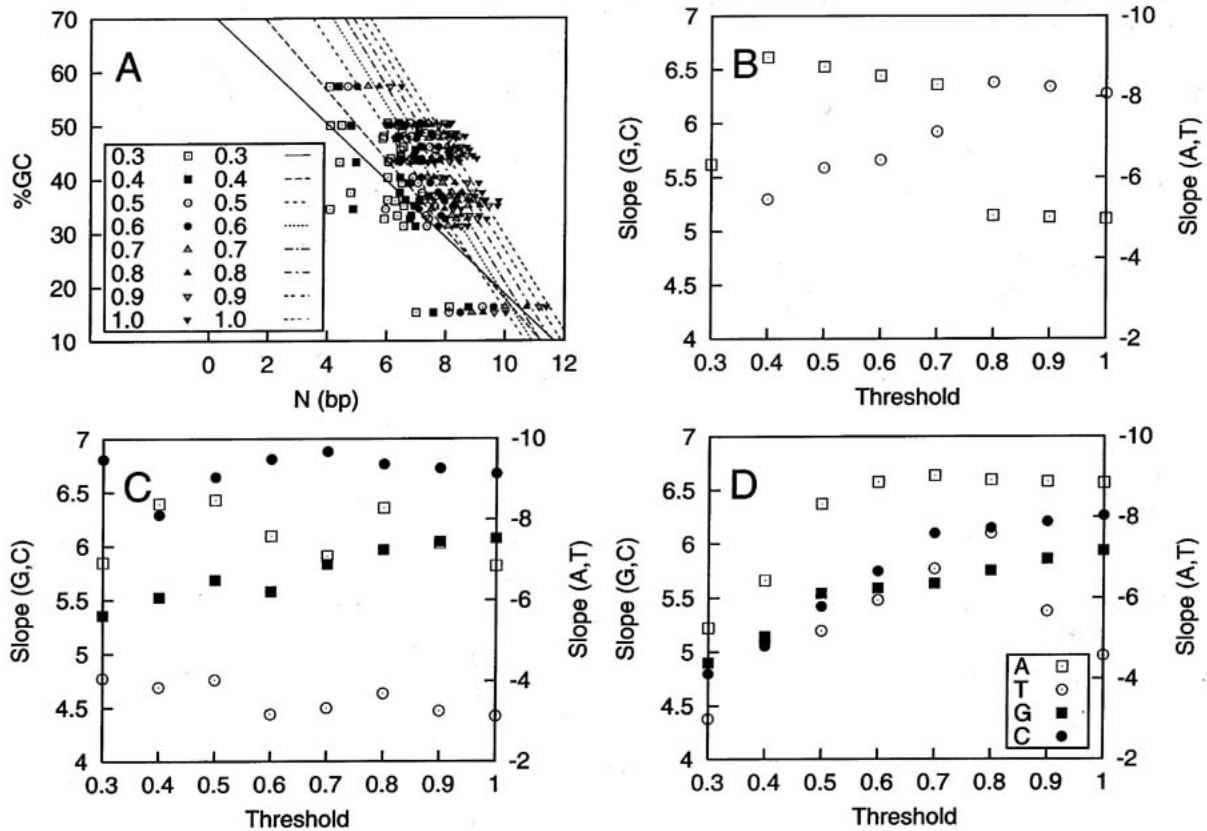
The concept of a threshold value was introduced to provide a description of the  $N$  dependence of the observed frequency of the tracts,  $f_{i_N,obs}$ , as it begins to rise significantly above that of the calculated  $f_{i_N,exp}$ . The threshold is a particular value of the  $\log(R)$ , where  $R$  is defined by eqn.3. In this study, we chose not to attempt a universal definition of the over-representation criterion. Rather, we decided to examine various thresholds that defined different over-representations beginning at 0.3, where the  $f_{i_N,obs}$  is 2 times greater than the  $f_{i_N,exp}$ , with increasing values up to 1.0, where the  $f_{i_N,obs}$  is exactly 10 times that of the  $f_{i_N,exp}$ . We present these data in Figure 7A for poly(dA) tracts, where the  $N$  values achieved at the different thresholds are plotted vs. the (G+C)% composition of the DNA. A negative slope between (G+C)% and  $N$  at

threshold for poly(dA) tracts in flanking sequences was observed for all thresholds. Poly(dT) tracts displayed similar behavior (data not shown). The changing slopes of the linear correlation lines shown in Figure 7A exhibit a progression from highest negative slope at threshold 0.3 to lower negative slope at threshold of 1.0. Thus, the lower the (G+C)% base composition of the genome, the higher the  $N$  at which over-representation of poly(dA) tracts occurs. For poly(dC) and poly(dG) tracts in flanking sequences, a positive linear correlation between the (G+C)% base composition and  $N$  at threshold was observed (data not shown). Interestingly, the slopes of the correlation lines also resulted in a progression of slope values. Thus, for poly(dC) tracts in flanking sequences, the lower the genome (G+C)% base composition, the lower the  $N$  at which over-representation occurs.

For homopolymer tracts of each type in coding, intron and flanking DNAs, data of the type shown for poly(dA) tracts in Figure 7A were calculated and the linear fit slopes are presented in Figure 7 panels B-D, respectively. For all the data, the poly(dA).poly(dT) tracts exhibit uniformly negative slopes between -4 and -10, while the poly(dG).poly(dC) tracts all exhibit positive slopes between 4.5 and 7. In coding sequences, poly(dA) tracts showed a sharp drop between 0.7 and 0.8 while poly(dT) tracts exhibited a slow increase. No poly(dG) or poly(dC) tracts of significant length occur in coding DNA, which did not allow over-representation to be exhibited at these threshold values. Therefore, no slope points are shown. For intron sequences in panel C, poly(dG).poly(dC) tracts exhibited no significant consistent slope trend. However, poly(dC) tracts have overall greater slopes than poly(dG) tracts. Likewise for poly(dA).poly(dT) tracts, no trend is evident but the latter possesses significantly greater slopes than the former. For flanking sequences, all four tract types exhibited increasing slopes as threshold values increased. As was true for intron sequences, poly(dC) again had overall somewhat greater slopes than poly(dG) tracts. Similar behavior was observed for poly(dA).poly(dT) tracts in both intron and flanking DNA sequence types, with poly(dA) again occurring at greater slopes than poly(dT).

#### **The highest over-representation and over-proportional length of homopolymer tracts appear in median GC% organisms**

We next used the proportion,  $P$ , eqn.5 for all the 4 homopolymer tracts to compare the maximum observed tract size with the maximum tract size expected for random tract occurrence within that (G+C)% base composition DNA. If the  $P$  quantity is greater than 1, tracts are over-proportional in length and if  $P$  is less than 1, tracts are under-proportional in length. We present  $P$ ,  $\hat{N}_{obs} /$

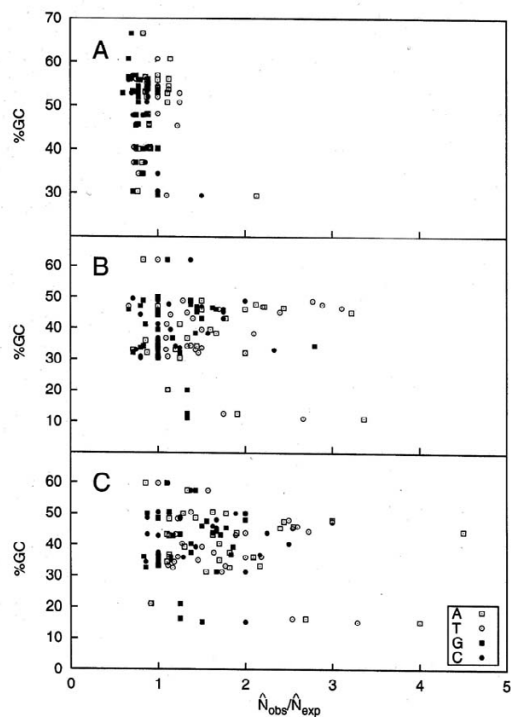


**Figure 7**

**The (G+C)% dependence of a series of calculated threshold values for enrichment of each homopolymer tract type** In panel A, data is presented for the length N observed at the given series of threshold values for poly(dA) tracts from all 27 organisms. Slopes determined for each threshold from the type of representative data presented in A, were then calculated from all 27 organism to provide the values for poly(dG).poly(dC) and poly(dA).poly(dT) tracts within: B. coding; C. intron; D. flanking regions. The legend in panel D applies as well to panels B and C.

$\hat{N}_{exp}$  for coding, intron and flanking DNAs from all 27 organisms in Figure 8 panels A-C, respectively. The  $\hat{N}_{exp}$  values are calculated from eqn.4. Large differences are obvious between coding and non-coding sequences. It is clear that tracts in coding regions, being mostly less than 1, are under-proportional in length for all base types. However, poly(dA).poly(dT) tracts are slightly under-proportional in length in GC-rich organisms, a fact that agrees with our previous observation of over-representation in tract frequencies in Figure 5.

By contrast, the average behavior of intron and flanking regions in Figure 8 is that tracts of all types, but especially poly(dA).poly(dT) tracts, occur at significantly over-proportional lengths. This fact is consistent with their significant over-representation levels that we previously presented in Figures 3,4,5. Very long poly(dA).poly(dT) tracts are observed in non-coding regions of some organisms, at lengths greater than 20 bp in excess of the expected length. Interestingly, the highest over-representation levels of tracts are found in organisms between 30% - 50% (G+C) base composition. The only exception to this was found in Dd, the most AT-rich organism we



**Figure 8**  
**The relationship of the (G+C)% of the DNA analyzed to the calculated  $\hat{N}_{obs} / \hat{N}_{exp}$  (P) for all the sequences of 27 organisms A. coding; B. intron; C. flanking.**

studied, where the longest poly(dA) tracts were 71 bp. Higher poly(dG).poly(dC) tract frequencies than expected for organisms greater than 40 % (G+C) base composition were observed in Figure 3B and Figure 4B. The same was true for the most AT-rich ones – Dd and Pf. Figure 8 panels B and C correspondingly exhibit significant levels of over-proportional lengths of poly(dG).poly(dC) tracts, consistent with over-representation, for organisms greater than 30% (G+C) base composition and exhibit moderate over-representation of poly(dG).poly(dC) tracts for Dd and Pf.

## Discussion

As a result of recent progress in the rate of DNA sequencing, the amount of sequenced DNA from many organisms has grown significantly. This has allowed our systematic study of the behavior of non-overlapping homopolymer tract frequencies in the 27 eukaryotes in this study span-

ning the 20% – 60 % (G+C) base composition range. Pre-processing of each of the 27 eukaryotes' largely single gene containing sequence files eliminated sequence redundancies that would introduce bias into the frequency calculations [39-41], that would not be representative of the biological genomes. In most organisms, well over 10% of the documents obtained were judged to contain redundant sequences and were removed by the CleanUP program (Table 1).

From our results in this study, it is clear that long homopolymer tracts are over-represented in non-coding sequences, but not coding sequences, within eukaryotic genomes of all base compositions. This is perhaps not surprising considering that the coding sequence populations must satisfy the constraints of the triplet genetic code. In addition, organisms might minimize the numbers of tracts in coding regions to avoid the severe, even fatal frame-shift mutations that might be introduced by slip-page-replication events at tracts [3-5,42]. In nearly all the organisms we studied, poly(dA).poly(dT) tracts were very much over-represented, beginning to be significantly enriched at lengths around 4–10 bp. These tracts also occurred at over-proportional lengths. This was particularly the case for organisms between 30% – 50% (G+C) composition, where over-proportional lengths were pronounced. By contrast, poly(dG).poly(dC) tracts, somewhat over-represented, do not occur at over-proportional lengths. This extends the findings of our previous *D. discoideum* DNA study that first described the tract over-representation transition region occurring at around 8–10 bp for poly(dA).poly(dT) sequences and their high over-proportional lengths [1]. Somewhat similar observations were made in a subsequent study of five eukaryotic organisms [35]. In general studies of repetitive sequences, poly(dA).poly(dT) tracts have been observed to be over-represented within eukaryotic genomes while poly(dG).poly(dC) tracts are significantly rarer [2,43]. Specific human repetitive sequences, such as the Alu elements, have been shown to contain long poly(dA).poly(dT) tracts, representing a significant repetitive sequence location for some of the over-represented tracts we observed in this study [44].

It has been suggested in a previous study that the over-representation occurring around 7–10 bp represented the minimum thermodynamic length required for any simple sequence repeat such as homopolymer tracts to undergo expansion by slip strand replication [35]. However, in our current study of 27 eukaryotes of widely varying base composition, we present more extensive results, especially those in Figure 7, that demonstrate this is not the case. Depending upon the threshold tract size value chosen to express over-representation of the tracts, the N value where over-representation occurs for A tracts can be seen

in Figure 7A to range for all the organisms from as low as 4–6 bp for 0.3 threshold (2× enrichment) to 8–11 bp for 1.0 threshold (10× enrichment). Furthermore, for poly(dA).poly(dT) tracts, the (G+C)% base composition *vs.* N slopes are negative for all thresholds, while for poly(dG).poly(dC) tracts the slopes are positive for all thresholds. This means that the base composition of the organism is the most important determinant of the particular threshold N value where over-representation begins and argues against an absolute solely thermodynamic determinant to the N value where over-representation begins *via* slip strand replication. In fact, our observed negative slopes for the poly(dA) tracts in Figure 7A, means that in higher (G+C)% composition organisms, the poly(dA) tracts become enriched at shorter N values than in (G+C)% poor organisms. This result is counter-intuitive to a thermodynamic argument, since the high (G+C)% base composition in neighboring sequences around a short poly(dA) tract in a high (G+C)% organism would be expected to resist the tract looping out to allow for slip strand replication because of the higher level of base stacking stabilization energy in the (G+C)-rich neighboring sequences. We believe that these (G+C)% composition dependent variable threshold N values we observed here are describing a complex mechanism that determines successful tract lengthening, rather than a single thermodynamic criterion for successful DNA looping during slip strand replication.

The reason why poly(dG).poly(dC) tracts occur only at short lengths in eukaryotes may have to do with some interesting structural and energetic polymorphisms of these sequences. Even short tracts of this type have the ability to rearrange from the right-handed double helix to form G-quadruplex structures. These structures have been implicated in biological function in systems as diverse as eukaryotic immunoglobulin switch regions [45], telomeric repeats on chromosome ends [46] and promoter regions [34]. Therefore, eukaryotes may select against these tracts at any significant length in order to minimize problems resulting from the significant structural plasticity of these tracts. Another potential problem with these tracts is the fact that they represent potential reservoirs of oxidative damage. Recently, long-range electron transfer has been demonstrated to occur through the delocalized molecular orbitals of the stacked bases in the DNA double helix [47]. The electron transfer energy in these studies is insensitive to distance along the helix, but is sensitive to the level of base stacking. Therefore, these electron transfer events ultimately cause oxidative damage at GG dinucleotides, a base pair doublet that has high stacking levels. Even greater intensities of photo-damage were observed for GGG triplets. Therefore, eukaryotic organisms have a second compelling reason to mostly avoid the use of these homopolymer tracts at any signifi-

cant length—a fact reflected in the data we have presented here.

It must be kept in mind in these discussions of homopolymer tract over-representation, that these tracts represent only a subset of the larger sequence class of polypurines and polypyrimidines that exist in and are over-represented within all eukaryotes. In a study of over 700 sequenced chromosomes or long sequences contained in plasmids [48], a bias toward longer polypurine and polypyrimidine tracts in eukaryotes was reported as a function of length N, similar to the homopolymer poly(dA).poly(dT) tract frequency behavior we have reported here.

We have previously observed that the long (N>10 bp) poly(dA).poly(dT) tracts over-represented in *D. discoideum* DNA (1) were not randomly distributed within the sequences from that organism. In fact, they are arrayed with an average spacing that corresponds to the repeating nucleosome DNA length found experimentally in *D. discoideum* chromatin [18]. And in that study, adjacent long pairs of tracts plus the intervening non-tract DNA were found to occur within a length corresponding to the internucleosomal linker DNA size found in *D. discoideum* chromatin. These results suggest that the long tracts only occur in restricted locations in chromatin. This supposition is supported by more recent experimental studies in *D. discoideum* chromatin compared to calculations of poly(dA).poly(dT) tract spacings in *D. discoideum* DNA (Marx, K.A., Zhou, Y. and Kishawi, I. unpublished results). That long poly(dA).poly(dT) tracts avoid being located within nucleosome core regions was experimentally determined from sequencing studies of native chicken erythrocyte chromatin [17]. In agreement with this line of reasoning, recent studies have shown that the nucleosome structure readily incorporates DNA containing short tracts, such as the sequence A<sub>5</sub>TATA<sub>4</sub>, but longer tracts such as those found in the sequence A<sub>15</sub>TATA<sub>16</sub>, completely disrupt the phasing of nucleosomes [49]. Short tracts not only are incorporated into nucleosomes, but they actually represent more stable than average nucleosome positioning sequences when they occur in-phase with the helical turn at roughly every 10 bp [50]. In human NF1—the Alu repeat element is blocked *in vitro* from forming a nucleosome by the presence of a bipartite T<sub>14</sub>A<sub>11</sub> tract sequence [51].

Different investigators have postulated two additional functions for tracts. The first is their use as promoters. This function may be synergistic with the long poly(dA).poly(dT) tracts preventing the formation of nucleosome structures. The second is as DNA binding sequences for specific poly(dA).poly(dT) tract binding proteins that possess some as yet unknown function.

There are a number of reports that poly(dA).poly(dT) tracts function in eukaryotes as promoter sequences. In *D. discoideum* DNA, the actin genes contain a remarkably long (45 bp) promoter upstream of the TATA box [52]. In this study, the length of the tract was shown to correlate with the transcriptional level of these genes. A number of studies have demonstrated similar long tract promoter activity in yeast promoter regions [32,53,54] and in various mammalian [55] and human promoters [56]. In many of these studies, it was demonstrated that the promoter activity of the long tracts was correlated with this sequence being nucleosome free or not complexed with a protein.

In the case of potential tract function where proteins bind to long poly(dA).poly(dT) tracts, there are a few investigated examples. The small protein datin, 13 kD, has been isolated from *S. cerevisiae* cells [57]. It has a required tract-binding site that is 9–11 bp in length and its function upon tract binding is unknown. Two high affinity poly(dA).poly(dT) tract-binding proteins, 70 and 74 kD species of unknown function, have been identified in *D. discoideum* [58]. Another example of a tract binding protein has been discovered in *D. discoideum*, where some 200 copies of terminal repeat retrotransposons are under transcriptional control by a 134 bp DNA control element [59]. Within this control element, a nuclear protein called CMBF binds to two almost homopolymeric 24 bp poly(dA).poly(dT) sequences. This CMBF protein contains so-called 'A.T hook' regions that interact with a 5–6 contiguous A:T base pair tract. These 'A.T hooks' are found in a number of other (A+T)-rich sequence binding proteins such as HMG-I, DAT1 from yeast, D1 from *D. melanogaster* and human UBF. In summary, it is unclear what functions these various pure poly(dA).poly(dT) tract binding proteins serve, and how their binding occurs at specific tracts while other tracts remain free of protein. The one point that can be stated with certainty is the correlation between tract binding site size (8–11 bp) of the proteins and the upper threshold (8–11 bp) size where tracts become significantly over-represented or enriched in our study. We believe that this similarity is not coincidental and is a consequence of some functional linkage.

A novel aspect of our study was that for both flanking and intron sequences the over-representation of the poly(dA) and poly(dT) tracts were actually more pronounced in less (A+T)-rich organisms as compared to the most (A+T)-rich, *Dd* and *Pf*. Also novel was that poly(dA) and poly(dT) tracts showed negative slopes between the organisms' DNA (G+C)% composition and the threshold value. Thus, the higher the (G+C) base composition, the lower the tract length at which over-representation occurs. In fact, the highest over-representations of homopolymer tracts were observed in median (G+C)% organisms from

30–50%. Also, the distribution was almost symmetric with respect to the different organisms' (G+C)%. We believe that these results could be explained as a result of the insertion of retrotransposon elements into DNA. Eukaryotic transposons are known to be a widely occurring class of repeated DNA sequences ranging in size from about 1 kb to 8 kb. They contain inverted sequence repeats at their termini. The most common transposon class is comprised of retrovirus-like transposons [60], thought to arise from the integration of retroviral RNA sequences into a given eukaryotic genome. The resulting retrotransposon elements do not represent infectious viral DNA and are not transcribed since they lack accompanying promoter sequences. These DNA sequences do possess a poly(dA).poly(dT) tract that resulted from the 3' poly A tail on the original viral mRNA that formed the retrotransposon. Typical retrovirus-like retrotransposons, such as *copia* in *D. melanogaster* and *IAP* in *M. musculus*, are known to occur in thousands of copies in their respective genomes [60]. Therefore, inserted retrotransposon elements represent the likely origin of the excess over-representation of poly(dA).poly(dT) sequences that we observed in the majority of eukaryotes in this study, irrespective of their overall base composition.

## Methods

The single copy gene DNA sequences from 27 eukaryotic organisms were retrieved from GenBank, EMBL, and DDBJ, the members of the tripartite, international collaboration of sequence databases [61]. Every search excluded: ESTs (expressed sequence tag), STSs (sequence-tagged sites), and GSSs (genomic survey sequence), and were limited to organism and genomic DNA only. Moreover, sequences designated: "mitochondrion", "chloroplast", and "chromosome" were also excluded in the search query via these keywords using Boolean operators. In addition, the whole chromosome sequences from 2 of these organisms were also retrieved. The eukaryotic organisms covered are tabulated in Table 1.

The GenBank documents were processed by the program "CleanUP", kindly provided by the Department of Biochemistry and Molecular Biology, University of Bari, Italy [62]. Our purpose in using the program was to get rid of redundancy in our sequence collections so that no bias would be introduced into the homopolymer tract distributions we calculated [36]. The settings for the program are: precision factor (0), different adjacent nucleotides (2), threshold similarity percentage for searching (95.0), overlapping percent for searching (50.0), local similarity percent (70.0), percent ambiguous symbols (e.g. N) to skip matches (10), overlapping percent for cleaning (90.0), minimum length for overlapping (1), minimum length for overlapping segment (20), sequence minimum length so that a sequence is processed, otherwise is

cleaned (30). This application of "CleanUP" results in eliminating all the sequences less than 30 bp in length, with more than 20 bp overlapping with the primary sequence (the sequence used as a basis for comparison), and possessing over 90% similarity with the primary sequence.

Then the redundancy cleaned sequence files were input into the "Compile" program. Compile is part of the "Melt-Sim" program for the Windows suite of applications [37,63]. This program was used to extract raw sequences from the GenBank-formatted documents. Sequences of the functional categories, coding, intron and flanking were extracted according to their location tags. Respectively, "CDS" is for coding sequences, "intron" is for intron sequences, and "5'UTR", "3'UTR" and any other sequences excluding "CDS" and "intron" are all included into flanking sequences. The sequences were then concatenated into ASCII text files, one each for coding, intron and flanking. The ends of the individual sequences, as they appeared in the individual GenBank-formatted documents, were tagged to prevent the artifactual joining of those sequences that could result in the creation of artifactual long tracts. The basic characteristics of the coding, intron and flanking files that we used as computational start points for homopolymer tract frequency determination are summarized in Table 2.

Each file was subsequently analyzed using the program "Poly" [38,64], which calculates parameters for non-overlapping homopolymer tracts, including the total base count for each file, GC composition, and the numbers and the frequencies of the homopolymer tracts of different lengths. Poly uses a moving window of 1 bp in length to differentiate tracts and spacers, taking into account the tags used to prevent the artifactual concatenation. These data and additional information are kept as data objects in the program and can be manipulated in various ways.

Poly calculates the observed tract frequency of base *i*,  $f_{i,N,obs}$ , of length *N* by the formula:

$$f_{i,N,obs} = \frac{c_{i,N,obs}}{l_{seq}} \quad (1a)$$

where  $c_{i,N,obs}$  is the number of observed tracts of base *i* at length *N* contained in each sequence and  $l_{seq}$  is the total length of the sequence (total base count) in which those tracts were counted.

Using the relationship:

$$\log(f_{i,N,obs}) = -\log(P') * N + \log(a) \quad (1b)$$

the  $f_{i,N,obs}$  of tracts of length *N* can be related to *N* and *P'*. The parameter *P'* is the inverse of the frequency,  $f_{slope}$ , of the tract base *i* in the particular genome compartment and is determined from the slope  $[-\log(P')]$  of an eqn. [1b] plot. The  $f_{slope}$  quantity, which represents an effective base frequency for that DNA, can be determined for a given set of data, and then compared to the real frequency for that base occurring in the sequences being examined, as we have previously described [1].

The expected frequency,  $f_{i,N,exp}$ , of a homopolymer tract of length *N* randomly occurring is calculated by the formula:

$$f_{i,N,exp} = f_{i,N,obs}^N \times (1 - f_{i,obs})^2 \quad (2)$$

where  $f_{i,N,obs}$  is the base frequency

$R = f_{i,N,obs} / f_{i,N,exp}$  (3) is the fractional base composition of the tract base *i* within the DNA for that file, and *N* is the tract length.

The level of tract representation for base *i* is then calculated as the ratio of observed to predicted frequencies, defined as "Representation" (*R*):

$$\hat{N}_{exp} = \frac{\log\left[\frac{1}{l_{seq}(1 - f_{i,obs})^2}\right]}{\log(f_{i,obs})} \quad (4)$$

Values larger than 1 indicates base *i* tracts are "over-represented", while values less than 1 indicate tracts are "under-represented". The  $\log(R)$  versus *N* plots presented in Figure 6 were generated using the program Gnuplot [38,65]. The values of *N* at 0.3 to 1.0 of the  $\log(R)$  were found using linear interpolation of the data. We term these *N* values, *thresholds*, corresponding to particular enrichments of tract occurrence.

The maximum expected length of a homopolymer tract of base *i*,  $\hat{N}_{exp}$ , given the base composition of the entire sequence,  $R = f_{i,N,obs} / f_{i,N,exp}$  (3), is calculated by the formula:

$$\hat{N}_{exp} = \frac{\log\left[\frac{1}{l_{seq}(1 - f_{i,obs})^2}\right]}{\log(f_{i,obs})} \quad (4)$$

The length of a given homopolymer tract can then be compared to its expected length by taking the ratio of the longest observed length,  $\hat{N}_{obs}$ , to the longest expected

length,  $\hat{N}_{exp}$ . This parameter is defined as "Proportion ( $P$ )". Thus, we have the formula:

$$P = \frac{\hat{N}_{obs}}{\hat{N}_{exp}} \quad (5)$$

$P$  values larger than 1 are called "over-proportional" and  $P$  values less than 1 are "under-proportional".  $P$  represents the tract length comparison on the x-axis of Figure 8, which is complementary to the parameter  $R$  for tract frequency comparisons on y-axis. They are both important parameters for the evaluation of the frequency and length distributions of any tracts.

### Authors' contributions

YZ carried out the sequence data collection, clean-up, and analysis, and drafted the major part of the manuscript. JWB contributed both major programs Meltsim and Poly in this study, and also participated in analyzing data and drafted part of the manuscript. KAM conceived the study, participated in its design and coordination and revised and finalized the manuscript in all its revisions. All authors read and approved the final manuscript. The authors acknowledge the contribution from a reviewer of the concepts of retroelement insertion and differential polymerase selectivity as potential origins for the higher A & T tract frequencies than G&C tract frequencies that we describe here.

### References

- Marx KA, Hess ST, Blake RD: **Characteristics of the large (dA)<sub>n</sub>(dT)<sub>n</sub> homopolymer tracts in *D. discoideum* gene flanking and intron sequences.** *J Biomol Struct Dyn* 1993, **11**:57-66.
- Toth G, Gaspari Z, Jurka J: **Microsatellites in different eukaryotic genomes: survey and analysis.** *Genome Res* 2000, **10**:967-981.
- Streisinger G, Okada Y, Emrich J, Newton J, Tsugita A, Terzaghi E, Inouye M: **Frameshift mutations and the genetic code.** *Cold Spring Harb Symp Quant Biol* 1966, **31**:77-84.
- Kunkel TA, Soni A: **Mutagenesis by transient misalignment.** *J Biol Chem* 1988, **263**:14784-14789.
- Fujii S, Akiyama M, Aoki K, Sugaya Y, Higuchi K, Hiraoka M, Miiki Y, Saitoh N, Yoshiyama K, Ihara K, Seki M, Ohtsubo E, Maki H: **DNA replication errors produced by the replicative apparatus of *Escherichia coli*.** *J Mol Biol* 1999, **289**:835-850.
- Strand M, Prolla TA, Liskay RM, Petes TD: **Destabilization of tracts of simple repetitive DNA in yeast by mutations affecting DNA mismatch repair.** *Nature* 1993, **365**:274-276.
- Kroustil LC, Register K, Bebenek K, Kunkel TA: **Exonucleolytic proofreading during replication of repetitive DNA.** *Biochemistry* 1996, **35**:1046-1053.
- Tran HT, Keen JD, Krickler M, Resnick MA, Gordenin DA: **Hypermutability of homonucleotide runs in mismatch repair and DNA polymerase proofreading yeast mutants.** *Mol Cell Biol* 1997, **17**:2859-2865.
- Alexeev DG, Lipanov AA, Skuratovskii I: **Poly(dA)<sub>n</sub>.poly(dT)<sub>n</sub> is a B-type double helix with a distinctively narrow minor groove.** *Nature* 1987, **325**:821-823.
- Aymami J, Coll M, Frederick CA, Wang AH, Rich A: **The propeller DNA conformation of poly(dA)<sub>n</sub>.poly(dT)<sub>n</sub>.** *Nucleic Acids Res* 1989, **17**:3229-3245.
- Arnott S, Chandrasekaran R, Birdsall DL, Leslie AG, Ratliff RL: **Left-handed DNA helices.** *Nature* 1980, **283**:743-745.
- Nelson HC, Finch JT, Luisi BF, Klug A: **The structure of an oligo(dA)<sub>n</sub>.oligo(dT)<sub>n</sub> tract and its biological implications.** *Nature* 1987, **330**:221-226.
- Lipanov AA, Chuprina VP: **The structure of poly(dA)<sub>n</sub>.poly(dT)<sub>n</sub> in a condensed state and in solution.** *Nucleic Acids Res* 1987, **15**:5833-5844.
- Rhodes D: **Nucleosome cores reconstituted from poly(dA)<sub>n</sub>.poly(dT)<sub>n</sub> and the octamer of histones.** *Nucleic Acids Res* 1979, **6**:1805-1816.
- Simpson RT, Kunzler P: **Chromatin and core particles formed from the inner histones and synthetic polydeoxyribonucleotides of defined sequence.** *Nucleic Acids Res* 1979, **6**:1387-1415.
- Kunkel GR, Martinson HG: **Nucleosomes will not form on double-stranded RNA or over poly(dA)<sub>n</sub>.poly(dT)<sub>n</sub> tracts in recombinant DNA.** *Nucleic Acids Res* 1981, **9**:6869-6888.
- Satchwell SC, Drew HR, Travers AA: **Sequence periodicities in chicken nucleosome core DNA.** *J Mol Biol* 1986, **191**:659-675.
- Marx KA, Hess ST, Blake RD: **Alignment of (dA)<sub>n</sub>(dT)<sub>n</sub> homopolymer tracts in gene flanking sequences suggests nucleosomal periodicity in *D. discoideum* DNA.** *J Biomol Struct Dyn* 1994, **12**:235-246.
- Marini JC, Levene SD, Crothers DM, Englund PT: **A bent helix in kinetoplast DNA.** *Cold Spring Harb Symp Quant Biol* 1983, **47**:279-283.
- Wu HM, Crothers DM: **The locus of sequence-directed and protein-induced DNA bending.** *Nature* 1984, **308**:509-513.
- Koo HS, Wu HM, Crothers DM: **DNA bending at adenine.thymine tracts.** *Nature* 1986, **320**:501-506.
- Hagerman PJ: **Straightening out the bends in curved DNA.** *Biochim Biophys Acta* 1992, **1131**:125-132.
- Bossi L, Smith DM: **Conformational change in the DNA associated with an unusual promoter mutation in a tRNA operon of *Salmonella*.** *Cell* 1984, **39**:643-652.
- Snyder M, Buchman AR, Davis RW: **Bent DNA at a yeast autonomously replicating sequence.** *Nature* 1986, **324**:87-89.
- Zahn K, Blattner FR: **Direct evidence for DNA bending at the lambda replication origin.** *Science* 1987, **236**:416-422.
- Jayasena SD, Behe MJ: **Competitive nucleosome reconstitution of polydeoxynucleotides containing oligoguanosine tracts.** *J Mol Biol* 1989, **208**:297-306.
- Puhl HL, Gudibande SR, Behe MJ: **Poly(dA:dT) and other synthetic polydeoxynucleotides containing oligoadenosine tracts form nucleosomes easily.** *J Mol Biol* 1991, **222**:1149-1160.
- McCall M, Brown T, Kennard O: **The crystal structure of d(G-G-G-G-C-C-C-C). A model for poly(dG)<sub>n</sub>.poly(dC)<sub>n</sub>.** *J Mol Biol* 1985, **183**:385-396.
- Travers AA: **DNA conformation and protein binding.** *Annu Rev Biochem* 1989, **58**:427-452.
- Struhl K: **Naturally occurring poly(dA-dT) sequences are upstream promoter elements for constitutive transcription in yeast.** *Proc Natl Acad Sci USA* 1985, **82**:8419-8423.
- Boettcher B: **Transcription initiation and nuclease-sensitive sites upstream of the epsilon-globin gene in K562 cells are related to poly(dA)<sub>n</sub>.poly(dT)<sub>n</sub> sequences.** *J Theor Biol* 1990, **146**:333-339.
- Iyer V, Struhl K: **Poly(dA:dT), a ubiquitous promoter element that stimulates transcription via its intrinsic DNA structure.** *Embo J* 1995, **14**:2570-2579.
- Schultes NP, Szostak JW: **A poly(dA.dT) tract is a component of the recombination initiation site at the ARG4 locus in *Saccharomyces cerevisiae*.** *Mol Cell Biol* 1991, **11**:322-328.
- Siddiqui-Jain A, Grand CL, Bearss DJ, Hurley LH: **Direct evidence for a G-quadruplex in a promoter region and its targeting with a small molecule to repress c\_myc transcription.** *Proc Natl Acad Sci* 2002, **99**:11593-11598.
- Dechering KJ, Cuelenaere K, Konings RNH, Leunissen JAM: **Distinct frequency-distributions of homopolymeric DNA tracts in different genomes.** *Nucleic Acids Res* 1998, **26**:4056-4062.
- Attimonelli M, Liuni S, Pesole G: **CLEANUP: a fast computer program for removing redundancies from nucleotide sequence database.** *Comput Appl Biosci* 1996, **12**:1-8.
- Blake RD, Bizzaro JV, Blake JD, Day GR, Delcourt SG, Knowles G, Marx KA, SantaLucia J: **Statistical Mechanical Simulation of Polymeric DNA Melting with MELTSIM.** *Bioinformatics* 1999, **15**:370-375.



38. Bizzaro JW, Marx KA: **Poly: a quantitative analysis tool for simple sequence repeat (SSR) tracts in DNA.** *BMC Bioinformatics* 2003, **4**:22-27.
39. Lamperti ED, Kittelberger JM, Smith TF, Villa-Komaroff L: **Corruption of genomic databases with anomalous sequence.** *Nucleic Acids Res* 1992, **20**:2741-2747.
40. Paricio N, Terol J, Artero RD, Perez-Alonso M: **Poly(dC) segments and cloning artifacts in databases.** *Genetics* 1995, **139**:487-488.
41. van Hintum TJJ, van Treuren R: **Molecular markers: Tools to improve Genebank efficiency.** *Cell Mol Biol Lett* 2002, **7**:737-744.
42. Kirchner JM, Tran H, Resnick MA: **A DNA polymerase  $\epsilon$  mutant that specifically causes +1 frameshift mutations within homonucleotide runs in yeast.** *Genetics* 2000, **155**:1623-1632.
43. Katti M, Ranjekar K, Gupta VS: **Differential Distribution of Simple Sequence Repeats in Eukaryotic Genome Sequences.** *Mol Biol Evol* 2001, **18**:1161-1167.
44. Roy AM, Carroll ML, Nguyen SV, Salem AH, Oldridge M, Wilkie AO, Batzer MA, Deininger PL: **Potential Gene Conversion and Source Genes for Recently Integrated Alu Elements.** *Genome Res* 2000, **10**:1485-1495.
45. Sen D, Gilbert W: **Formation of parallel four-stranded complexes by guanine-rich motifs in DNA and its implications for meiosis.** *Nature* 1988, **334**:364-366.
46. Sundquist WI, Klug A: **Telomeric DNA dimerizes by formation of guanine tetrads between hairpin loops.** *Nature* 1989, **342**:825-829.
47. Hall DB, Holmlin RE, Barton JK: **Oxidative DNA damage through long-range electron transfer.** *Nature* 1996, **382**:731-735.
48. Ussery D, Soumpasis DM, Brunak S, Starfeldt HH, Worning P, Krogh A: **Bias of purine stretches in sequenced chromosomes.** *Comput Chem* 2002, **26**:531-541.
49. Shimizu M, Mori T, Sakurai T, Shindo H: **Destabilization of nucleosomes by an unusual DNA conformation adopted by poly(dA).poly(dT) tracts in vivo.** *Embo J* 2000, **19**:3358-3365.
50. Widlund H, Cao H, Simonsson S, Magnusson E, Simonsson T, Nielsen PE, Kahn JD, Crothers DM, Kubista M: **Identification and Characterization of Genomic Nucleosome-positioning Sequences.** *J Mol Biol* 1997, **267**:807-817.
51. Englander EW, Howard BH: **A naturally occurring T<sub>14</sub>A<sub>11</sub> tract blocks nucleosome formation over the human neurofibromatosis type I (NF1)-Alu element.** *J Biol Chem* 1996, **271**:5819-5823.
52. Hori R, Firtel RA: **Identification and Characterization of multiple A/T-rich cis-acting elements that control expression from Dictyostelium actin promoters: the Dictyostelium actin upstream activating sequence confers growth phase expression and has enhancer-like properties.** *Nucleic Acids Res* 1994, **22**:5099-5111.
53. Suter B, Schnappauf G, Thomas F: **Poly(dA:dT) sequences exist as rigid DNA structures in nucleosome-free yeast promoters in vivo.** *Nucleic Acids Res* 2000, **28**:4083-4089.
54. Filetici P, Aranda C, Gonzalez A, Ballario P: **GCN5, a yeast transcriptional coactivator, induced chromatin reconfiguration of HIS3 promoter in vivo.** *Biochem Biophys Res Commun* 1998, **242**:84-87.
55. Koch KA, Thiele DJ: **Functional analysis of a homopolymeric (dA-dT) element that provides nucleosome access to yeast and mammalian transcription factors.** *J Biol Chem* 1999, **274**:23752-23760.
56. Fashena S, Reeves R, Ruddle NH: **A poly(dA:dT) upstream activating sequence binds high-mobility group I protein and contributes to lymphotoxin (tumor necrosis factor- $\beta$ ) gene regulation.** *Mol Cell Biol* 1992, **12**:894-903.
57. Winter E, Varshavsky A: **A DNA binding protein that recognizes oligo(dA).oligo(dT) tracts.** *Embo J* 1989, **8**:1867-1877.
58. Garreau H, Williams JG: **Two nuclear binding proteins of Dictyostelium discoideum with a high affinity for poly(dA)-poly(dT).** *Nucleic Acids Res* 1983, **11**:8473-8484.
59. Horn J, Dietz-Schmidt A, Zundorf I, Garin J, Dingermann T, Winckler T: **A Dictyostelium protein binds to distinct oligo(dA)×oligo(dT) DNA sequences in the C-module of the retrotransposable element DRE.** *Eur J Biochem* 1999, **265**:441-448.
60. Moran LA, Scrimgeour KG, Horton HR, Ochs RS, Rawn JD: **Biochemistry.** Neil Patterson, Prentice Hall, Engelwood Cliffs, NJ 21994.
61. [<http://www.ncbi.nlm.nih.gov/entrez/query.fcgi?db=Nucleotide>].
62. [<http://bighost.area.ba.cnr.it/BIG/CleanUP>].
63. [<http://www.bioinformatics.org/meltsim>].
64. [<http://www.bioinformatics.org/poly>].
65. [<http://www.gnuplot.info>].

Publish with **BioMed Central** and every scientist can read your work free of charge

"BioMed Central will be the most significant development for disseminating the results of biomedical research in our lifetime."

Sir Paul Nurse, Cancer Research UK

Your research papers will be:

- available free of charge to the entire biomedical community
- peer reviewed and published immediately upon acceptance
- cited in PubMed and archived on PubMed Central
- yours — you keep the copyright

Submit your manuscript here:  
[http://www.biomedcentral.com/info/publishing\\_adv.asp](http://www.biomedcentral.com/info/publishing_adv.asp)

