

## Corrigendum

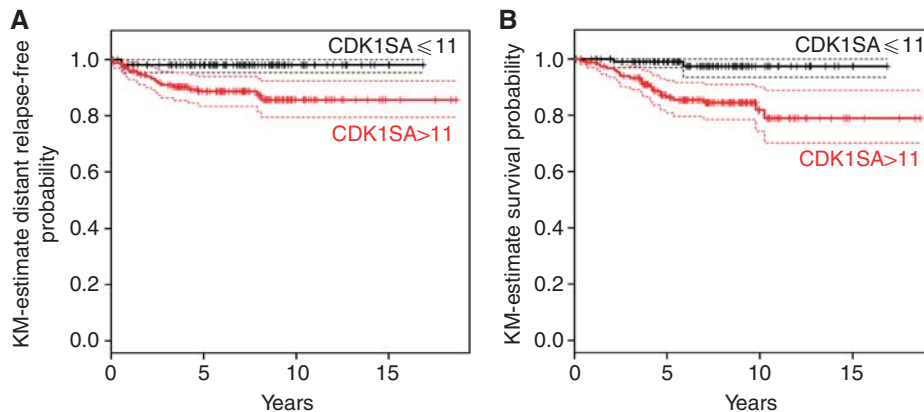
## Specific activity of cyclin-dependent kinase I is a new potential predictor of tumour recurrence in stage II colon cancer

ECM Zeestraten, M Maak, M Shibayama, T Schuster, U Nitsche, T Matsushima, S Nakayama, K Gohda, H Friess, CJH van de Velde, H Ishihara, R Rosenberg, PJK Kuppen and K-P Janssen

British Journal of Cancer (2012) 106, 792. doi:10.1038/bjc.2012.38 www.bjcancer.com  
© 2012 Cancer Research UKCorrection to: British Journal of Cancer (2011) 106, 133–140.  
doi:10.1038/bjc.2011.504

The authors would like to apologise for this error.

Upon publication of this paper earlier in Volume 106, the authors noticed an error in Figure 2, whereby panels A and B were exact duplicates. The correct Figure is now shown below.



**Figure 2** Analysis of distant metastasis-free survival and cause-specific survival. **(A)** Patients classified in the high-risk group (based on  $CDK1SA > 11 \text{ maU eU}^{-1}$ ) had a significantly worse distant metastasis event rate as compared with the low-risk group (HR = 6.2, 95% CI: 1.45–26.9,  $P = 0.0049$ ; exact conditional Monte-Carlo  $P$ -value = 0.029). **(B)** Patients classified in the CDK1SA-based high-risk group had a significantly lower cause-specific survival (HR = 7.62, 95% CI: 1.80–32.2,  $P = 0.001$ ).