



# Extremely preterm children demonstrate hyperconnectivity during verb generation: A multimodal approach

Maria E. Barnes-Davis<sup>a,b,c,\*</sup>, Stephanie L. Merhar<sup>a,b</sup>, Scott K. Holland<sup>d,e</sup>, Nehal A. Parikh<sup>a,b</sup>, Darren S. Kadis<sup>f,g</sup>

<sup>a</sup> Cincinnati Children's Hospital Medical Center, Perinatal Institute, United States

<sup>b</sup> University of Cincinnati, Department of Pediatrics, United States

<sup>c</sup> University of Cincinnati, Department of Neuroscience, United States

<sup>d</sup> Medpace Imaging Core Laboratory, Medpace Inc., United States

<sup>e</sup> University of Cincinnati, Department of Physics, United States

<sup>f</sup> Hospital for Sick Children and University of Toronto are in Toronto, Canada

<sup>g</sup> University of Toronto, Department of Physiology, Canada

## ARTICLE INFO

### Keywords:

Prematurity  
Language  
Functional MRI  
Magnetoencephalography  
Connectivity

## ABSTRACT

Children born extremely preterm (EPT, <28 weeks gestation) are at risk for delays in development, including language. We use fMRI-constrained magnetoencephalography (MEG) during a verb generation task to assess the extent and functional connectivity (phase locking value, or PLV) of language networks in a large cohort of EPT children and their term comparisons (TC). 73 participants, aged 4 to 6 years, were enrolled (42 TC, 31 EPT). There were no significant group differences in age, sex, race, ethnicity, parental education, or family income. There were significant group differences in expressive language scores ( $p < 0.05$ ). Language representation was not significantly different between groups on fMRI, with task-specific activation involving bilateral temporal and left inferior frontal cortex. There were group differences in functional connectivity seen in MEG. To identify a possible subnetwork contributing to focal spectral differences in connectivity, we ran Network Based Statistics analyses. For both beta (20–25 Hz) and gamma (61–70 Hz) bands, we observed a subnetwork showing hyperconnectivity in the EPT group ( $p < 0.05$ ). Network strength was computed for the beta and gamma subnetworks and assessed for correlation with language performance. For the EPT group exclusively, strength of the subnetwork identified in the gamma frequency band was positively correlated with expressive language scores ( $r = 0.318$ ,  $p < 0.05$ ). Thus, hyperconnectivity is positively related to language for EPT children and might represent a marker for resiliency in this population.

## 1. Introduction

Preterm birth is a public health crisis, impacting 10% of children born in the United States every year and up to 15 million children globally every year (Blencowe et al., 2013; Martin et al., 2019). With advances in perinatal and neonatal care, children born as preterm as 22 weeks are now surviving. However, they still have significant risk for sensory and neurodevelopmental impairment (Adams-Chapman et al., 2018; Barre et al., 2011; Hutchinson et al., 2013; Mikkola et al., 2005; Moore et al., 2013; van Noort-van der Spek et al., 2012; Vohr, 2014). Children born preterm are at an increased risk for language impairment versus their term peers, with up to 40% of preterm children experiencing

language delays and approximately 20% receiving a diagnosis of specific language impairment (Barre et al., 2011; FOSTER-Cohen et al., 2007; Foster-Cohen et al., 2010; van Noort-van der Spek et al., 2012; Woods et al., 2014). Term equivalent age neuroimaging with cranial ultrasound or structural magnetic resonance imaging (MRI) and early language testing such as the Bayley Scales of Infant Development at 18–24 months corrected gestational age leave a large proportion of the variance in later language performance unaccounted for and do not accurately predict delays (Luttikhuisen dos Santos et al., 2013; Woods et al., 2014). This is important because early intervention programs are one of the few therapies that can improve neurodevelopmental outcomes, including language performance. Addressing language impairment early on might

\* Corresponding author at: Department of Pediatrics, University of Cincinnati College of Medicine, Attending Neonatologist, Perinatal Institute, Cincinnati Children's Hospital Medical Center, United States.

E-mail address: [maria.barnes@cchmc.org](mailto:maria.barnes@cchmc.org) (M.E. Barnes-Davis).

<https://doi.org/10.1016/j.nicl.2021.102589>

Received 5 October 2020; Received in revised form 16 January 2021; Accepted 2 February 2021

Available online 12 February 2021

2213-1582/© 2021 The Authors.

Published by Elsevier Inc.

This is an open access article under the CC BY-NC-ND license

(<http://creativecommons.org/licenses/by-nc-nd/4.0/>).

mitigate later impact on scholastic attainment and quality of life (Barre et al., 2011; Vieira & Linhares, 2011; Vohr, 2014).

Despite the numerous prenatal and neonatal risk factors for impairment that preterm children experience, there is great variability in outcome, with some children born extremely preterm (<28 weeks completed gestation) doing well (Garfield et al., 2017). Furthermore, adults who were born preterm and their families express frustration that they were given overwhelming lists of risk factors in the neonatal intensive care unit (NICU) but little to no information on how to counter these risks (Leavy & Prina, 2015; Saigal, 2014). Investigations of resiliency factors—those that confer a positive outcome despite risk—should be prioritized along with risk factors. The search for functional neuroimaging markers of risk and resiliency in the context of preterm birth is important in that it could provide metrics for risk stratification and predictive markers for later language functioning, perhaps before children exhibit verbal or language skills. Additionally, through the investigation of aberrant developmental trajectories (including those of children who spend the third trimester of gestation ex utero) we might gain new insights regarding the neurobiology of language that could be of utility for other clinical groups and for typically developing children. Existing literature evaluating connectivity supporting language in preterm children to date has relied primarily on resting state and task-based functional MRI. Taken as a whole, these functional MRI studies report increased interhemispheric connectivity and increased involvement of right-sided language homologue areas (Barnes-Davis et al., 2018; Choi et al., 2018; Gozzo et al., 2009; Kwon et al., 2015; 2016; Myers et al., 2010; Schafer et al., 2009; Scheinost et al., 2015; Wilke et al., 2014). However, relationships between connectivity and performance are inconsistent.

Magnetoencephalography (MEG), while having superior temporal resolution allowing a more direct noninvasive assessment of neural dynamics, has only been used in a handful of studies investigating neural networks in children born preterm (Barnes-Davis et al., 2018; Doesburg et al., 2011a, 2013; 2011b; Mossad et al., 2017; Sato et al., 2019; Ye et al., 2016). Our prior pilot study of 15 children born EPT and 15 term comparison children (TC) was the first to use MEG to investigate the connectivity of language networks in prematurity. We assessed representation and connectivity of language networks at 4–6 years of age using multimodal imaging during a receptive language paradigm (passive stories listening task). Language representation (fMRI) was not significantly different between groups (Barnes-Davis et al., 2018). However, functional connectivity (MEG) was significantly increased in EPT, with significantly greater network strength than term controls TC. Connectivity was increased in bilateral temporal regions, in accordance with fMRI connectivity studies in older preterm participants (Gozzo et al., 2009; Scheinost et al., 2015). Prior studies could not conclude if hyperconnectivity in EPT reflects an alternate developmental trajectory or immaturity of normal language lateralization (Gozzo et al., 2009). We were able to leverage the temporal resolution of MEG to assess information flux and concluded that hyperconnectivity was due to increased drivers in right perisylvian cortex, supporting our theory of an alternate developmental trajectory and not merely a delay in normal language lateralization (Barnes-Davis et al., 2018). Additionally, through investigation of diffusion imaging obtained in the same study visit, we were able to show this increased connectivity was due to an atypically robust extracallosal pathway connecting bilateral perisylvian cortices (Barnes-Davis et al., 2020b). Performance on language tasks was positively correlated with extracallosal structural connectivity for the preterm group exclusively.

MEG studies including preterm children have reported decreased task-based and resting state functional connectivity on the whole brain level (Doesburg et al., 2013; 2011a; 2011b). However, none have focused on language and some did not report significant correlations between connectivity metrics and performance. The aim of this current paper is to investigate functional connectivity during an expressive language paradigm (a widely used verb generation task) to assess the

extent and connectivity of language networks in the largest cohort of children born extremely preterm followed by MEG (known to us) to date. Furthermore, we will compare connectivity of EPT children to that of their term counterparts and assess the correlation between hyperconnectivity and performance. We plan to test the a priori hypothesis that EPT children will have increased bitemporal functional connectivity versus TC and that this hyperconnectivity will be positively related to performance on standardized language assessments (particularly expressive language tasks) for EPT but not for TC.

## 2. Methods

### 2.1. Participants

This is a cohort study with 73 participants aged 4 to 6 years recruited from the greater Cincinnati area. TC ( $n = 42$ , 22 females) were recruited from local pediatric clinics and community announcements. EPT children ( $n = 31$ , 17 females) were recruited from Cincinnati-area neonatal intensive care units (NICUs) if they were born at <28 weeks gestation and were without parenchymal lesions, hemorrhage, or IVH > grade 2 on neonatal cranial ultrasound. Children with cerebral palsy, seizures, migraines, and formally diagnosed psychiatric disorders such as autism or ADHD were excluded from both groups. Children with contraindications for MRI or MEG scanning (metal implants, insulin pumps, etc.) were excluded from both groups. Imaging and behavioral data were included from 3 studies investigating the language development of term born and preterm children using multimodal neuroimaging. All 3 studies are approved by the Cincinnati Children's Hospital Medical Center Institutional Review Board (IRB) and the IRBs of Cincinnati-area delivery hospitals. All study procedures conformed to the US Federal Policy for the Protection of Human Subjects. Written informed consent was obtained from parents and verbal assent from all children.

### 2.2. Demographic and neuropsychological assessments

For all participants, demographic data were recorded, including age, sex, race, and ethnicity. Socioeconomic variables such as parental education and family income were also recorded by the parents. Participants completed a neuropsychological testing battery including the Peabody Picture Vocabulary Test 4 (PPVT); the Expressive Vocabulary Test 2 (EVT); and the Wechsler Nonverbal Scale of Ability (WNV). The PPVT (Dunn et al., 2015) is a well-normed and well-validated test of receptive language/vocabulary that has been widely used in studies of outcomes in prematurity (Luu et al., 2009; Ment et al., 2006; Mullen et al., 2011; Myers et al., 2010). The EVT (Williams, 2007) is co-normed with the PPVT and is a well validated measure of expressive language. The WNV (Wechsler & Naglieri, 2006) is a nonverbal test of general abilities especially developed for populations where there is a high risk of language impairment or where English might not be the primary spoken language.

### 2.3. Verb generation task

The same verb generation stimuli were used in both MEG and fMRI. For fMRI, they were presented in a block design; for MEG, they were presented in an event-related, random presentation. This auditory covert verb generation task has been reported previously by our group (Holland et al., 2001; Kadis et al., 2016; Yousofzadeh & Williamson, 2017). In brief, the task consisted of nouns spoken by a female voice (verb generation condition) or speech-shaped noise, matched to the noun stimuli for spectral content and amplitude envelope (noise condition). Children were asked to covertly generate a verb or “think of an action word” upon hearing nouns; in contrast, they were asked to quietly attend to the noise stimuli, without responding. Prior to MEG recording, participants were trained on an overt version of the task to assess understanding and promote compliance during acquisition. During MEG

acquisition, 71 distinct nouns and 71 noise trials were randomly presented. During fMRI acquisition, the noun stimuli were presented at a rate of once every 5 seconds, in five 30-second blocks. During the control block, children were asked to simply listen to the noise stimuli, presented every 5 seconds, in six 30-second blocks. Participants listened to a total of 30 nouns and 36 noise tones during the fMRI recordings, lasting <6 minutes.

#### 2.4. Magnetoencephalography acquisition

To avoid potential magnetization from the MRI, MEG was always acquired before MRI imaging on a 275-channel whole-head CTF system (MEG International Services Ltd., Coquitlam, BC). Neuromagnetic activity was recorded at 1200 Hz. Subjects were tested while awake and in the supine position. Auditory stimuli were presented via a calibrated audio system comprised of distal transducer, tubing, and ear inserts (Etymotic Research, IL, USA). Head localization coils were placed at nasion and preauricular locations to monitor movement throughout the recording. Following acquisition, the coils were replaced with radio-opaque markers, to facilitate offline co-registration of MRI and MEG data.

#### 2.5. Magnetic resonance acquisition

All subjects were studied awake without sedation in the presence of an experienced pediatric radiology technician, a pediatric clinical research coordinator, and a parent or legal guardian. This sample consists of children from 2 distinct studies (under 3 IRB protocols) on multimodal imaging of language in prematurity. The first study used a single echo fMRI acquisition. The second study used a multi-echo fMRI acquisition. For both studies, extremely preterm and term children were enrolled and the task, imaging site, and scanner remained the same. We conducted fMRI scanning at 3 T (Philips Achieva scanner). The single echo acquisition (used for 12 EPT children and 13 TC children) had TR / TE = 2000 / 30 ms, flip = 75°, 2.8 × 2.8 × 3.0 mm voxels. The multi echo acquisition (used for 17 EPT children and 29 TC) had TR 1381.14 ms; TE 14, 32, and 50 ms; 3.0 × 3.0 × 3.0 mm voxels; 308 dynamics; multiband factor 3; and in-plane SENSE factor of 3. For this analysis, we used only the middle echo (32 ms) for fMRI preprocessing and first and second level contrasts. Scan duration for both acquisitions was about 5 min. We obtained 3D T1-weighted volumes at 1.0 × 1.0 × 1.0 mm.

#### 2.6. Demographic and neuropsychological data analyses

Between group comparisons of continuous variables (age, assessment scores) were performed using independent samples t-tests in SPSS Statistics 26 running in Mac OS 10.15.6. Categorical variables (sex, race, ethnicity, parental education, household income) were compared between groups using Fisher's exact test.

#### 2.7. Magnetic resonance imaging analyses

Task-based fMRI data were analyzed using a conventional general linear model preprocessing pipeline in SPM12 (<http://www.fil.ion.ucl.ac.uk/spm/software/spm12/>) running in MatLab R2020a (MathWorks Inc., Natick, MA). This has been detailed in previous publications (Barnes-Davis et al., 2018; Kadis et al., 2016). The preprocessing pipeline included realignment, co-registration to the individual subject's T1-weighted images, normalization to template space (MNI 152), and smoothing with a full width half maximum (FWHM) of 5 mm. Task-based fMRI data were subjected to first- and second-level analyses as detailed in previous publications (Barnes-Davis et al., 2018; Kadis et al., 2016). At the first level, a Verb minus Noise contrast, with six motion parameters included as nuisance regressors, was evaluated to assess activation that was measured in response to the language stimulus versus the noise condition. At the second level, first level condition

contrasts were collected and subjected to a between groups independent samples *t* test evaluating the spatial distribution of activation in response to the language task. For this contrast,  $p < 0.001$  and  $k = 8$ . This was assessed with and without a family-wise error correction of  $p < 0.05$  and with and without accounting for imaging acquisition (single echo versus multi echo). Groupwise activation, including all preterm and term participants, were included in the joint activation map. This was parcellated into 200 random units (Craddock et al., 2012). Parcels having greater than 10% active voxels were retained, and the center of gravity was calculated for each parcel. These coordinates were determined and served as coordinate for virtual sensors in MEG connectivity analyses and subsequent graph theoretical analyses. 25 virtual sensors were extracted using the 200 unit parcellation scheme from Craddock because they met the criterion of 10% or greater overlap with the task-based fMRI activation map (Barnes-Davis et al., 2018; Kadis et al., 2016).

#### 2.8. Magnetoencephalography analyses

##### 2.8.1. Virtual sensor extraction and preprocessing

Data were analyzed using FieldTrip, an open-source MatLab toolbox for analyses of electrophysiological data, including MEG (Oostenveld et al., 2011). Continuous neuromagnetic data were bandpass filtered from 0.1 Hz to 100 Hz, and 60 Hz power-line noise attenuated using a sharp discrete Fourier transform filter. The data were then segmented into epochs of interest (700–1200 ms from onset of language stimuli) to remain consistent with previous work in term children (Kadis et al., 2011; Yousofzadeh & Williamson, 2017). Scanner jump artifacts were automatically detected, and the affected trials were rejected. We required at least 90% trial retention for inclusion in subsequent analyses. Realistic single-shell head models were constructed from the participants' 3D T1 weighted images (Nolte, 2003). A 3-D grid was constructed with dipole resolution of 5 mm on a template (MNI151) brain volume. The template grid was warped to individual anatomical space, and used to develop individual source models. Using a linearly constrained minimum-variance beamformer (LCMV) with 0.1% regularization, we estimated the time series of activity at each of the 25 network nodes (virtual sensor analysis) similar to our previously reported work (Barnes-Davis et al., 2018).

##### 2.8.2. Functional connectivity

Using FieldTrip, connectivity analyses were performed on the time courses at each virtual sensor. The trials were zero padded to 2 s total to minimize edge effects. The Fourier representation of each trial was obtained through multi-taper FFT (+/- 5 Hz smoothing) decomposition from 2 to 70 Hz in 0.5 Hz steps. Phase locking value (PLV) was computed at each frequency to assess functional connectivity in MEG. PLV is one of the most widely used metrics to assess connectivity in electroencephalography and MEG (Bastos & Schoffelen, 2016; Lachaux et al., 1999). PLV is readily computed from the cross-spectrum, obtained from conjugate multiplication of the Fourier representation of two signals. The imaginary component of the cross-spectrum represents the trial-wise difference between two signals. We computed PLV as the mean of unit-length trial-wise phase differences for signal pairs. For an excellent review of the computation of PLV, please see Bastos and Schoffelen (2016). PLV reflects the consistency of a phase relationship between two signals, with values ranging from 0 (no phase synchrony) to 1 (perfect phase synchrony).

The connectivity spectra were then plotted by group and visually inspected. Frequency bands in which there were apparent group differences on visual inspection were identified; connectivity within those bands was averaged; and the resulting adjacency matrices were subjected to analysis using Network Based Statistics (NBS). The approach is useful for identifying potential subnetworks contributing to observed network-wide group differences in connectivity. Here, we studied network extent as a function of group across a range of initial thresholds, using an overall *p* value of 0.05 and for 5000 permutations (Zalesky

et al., 2010). For the purpose of visualization, the median t-value yielding significant NBS results was used to characterize the sub-networks showing group differences. Surviving connections were summed for each subject to assess network strength. Network strength was then assessed for correlation with expressive language scores as a planned comparison across and within groups.

### 3. Results

#### 3.1. Demographic and neuropsychological assessments

There were no significant group differences in age, sex, race, ethnicity, highest parental education, combined family income, PPVT scores, or WNV scores (see Table 1). There were significant group differences in expressive language scores (mean standardized EVT scores were 102.6 +/- standard deviation of 9.4 for the EPT group and 111.7 +/- standard deviation of 15.9 for the TC group). An outlier was identified with significantly decreased scores (greater than 2 standard deviations below the mean) on standardized assessments (population mean for each of these instruments is 100, with a standard deviation of 15). This individual was removed from subsequent analyses, leaving 30 EPT children and 42 TC children in the final MEG connectivity analysis (see Table 1). For the preterm group, gestational age at birth ranged from 24 weeks to 27 weeks and 5 days. For the term group, gestational age ranged from 37 to 41 weeks.

**Table 1**  
Demographics and Neuropsychological Data with One Outlier Removed.

	Preterm (n = 30)	Term (n = 42)	p Value
Age (Years, Mean ± SD)	5.66 ± 0.84	5.62 ± 0.95	0.79
Gestational Age (Weeks + Days)	26 + 0	39 + 2	<0.01
Sex			
Females	16	22	1
Males	14	20	
Race			0.87
White/Caucasian	19	29	
Black/African American	8	8	
Other/Multiple	1	1	
No Response	2	4	
Ethnicity			0.51
Hispanic/Latino/Latina	3	1	
Not Hispanic/Latino/Latina	26	38	
No Response	1	3	
Family Income			0.74
< \$25000	4	4	
\$25000-\$50000	3	7	
\$50000-\$75000	10	8	
\$75000-\$100000	4	5	
\$100000-\$150000	4	10	
> \$150000	4	5	
No Response	1	3	
Parental Education			0.42
High School Diploma	3	4	
Some College	10	9	
College Diploma	4	2	
Post Graduate	12	24	
No Response	1	3	
Receptive Language	PPVT-4 (Mean ± SD) (Range 73–157)	114 ± 10.0 119 ± 18	0.13
Expressive Language	EVT-2 (Mean ± SD) (Range 80–147)	103 ± 9 112 ± 16	<0.01
General Abilities	WNV (Mean ± SD) (Range 60–138)	104 ± 13 109 ± 16	0.20

Note: Categorical variables were tested using Fisher's Exact Test and p values are reported. Continuous variables were tested using t tests. SD = Standard Deviation. PPVT-4 = Peabody Picture Vocabulary Test. EVT-2 = Expressive Vocabulary Test. WNV = Wechsler Non-Verbal Scale of Ability.

#### 3.2. Activation in functional magnetic resonance imaging

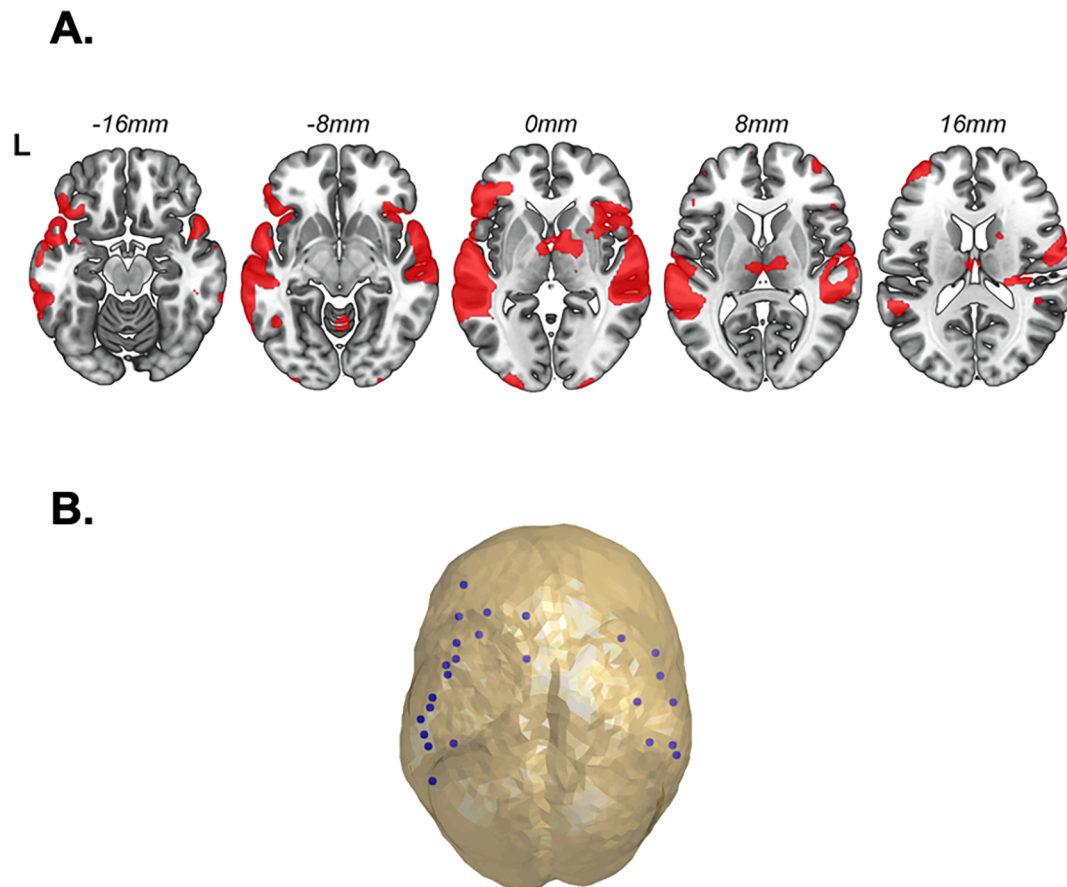
Of the 73 children included in the study, 7 TC children and 4 EPT children did not complete neuroimaging due to scheduling issues (e.g. arriving late to the study visit and needing to stop visit before all tasks were completed) or noncompliance with task (movement or wanting to stop imaging). Thus, 62 children were included in the fMRI analyses (35 TC and 27 EPT). Children who completed MEG were still included in connectivity analysis (72 children as noted above).

There were no significant differences in language representation in fMRI between groups. Activation in response to verb generation versus the noise condition involved the expected regions, including bilateral temporal and left inferior frontal cortex (Fig. 1A). To create a balanced joint activation map for subsequent MEG analyses, a subset (n = 53) of participants were randomly selected for participation in the mask, with equitable representation between groups (EPT versus TC) and study acquisitions (single echo versus multi-echo fMRI). The joint activation map was generated from the first level contrast maps (verbs versus noise) from 14 TC from the multi-echo acquisition, 14 EPT from the multi-echo acquisition, 13 TC from the single echo acquisition, and 12 EPT from the single echo acquisition.

#### 3.3. Connectivity in magnetoencephalography

Virtual sensors were obtained from multiplying the fMRI verb generation joint activation map with a 200 unit random parcellation map and extracting center of gravity coordinates from parcels with over 10% active voxels. These virtual sensors are listed in Table 2, shown in Fig. 1B, and served as nodes for subsequent connectivity and network analyses. Phase locking value (PLV) was computed for all node pairs for each participant, as described above, and plotted as a function of frequency for each group (Fig. 2). We performed visual inspection of the connectivity spectra and identified 2 bands in which we suspected EPT and TC children would significantly differ. We noted apparent increased functional connectivity in the EPT group in a contiguous band within the canonical beta frequency range (20–25 Hz) and in the canonical gamma frequency range (61–70 Hz). This hyperconnectivity was assessed and non-parametrically tested for group differences in network extent using NBS with 5000 permutations and familywise error correction set at p < 0.05. A subnetwork was identified in the beta range (Fig. 3) which was significant at a range of t statistic thresholds from 1 to 2. This subnetwork in the canonical beta range included 31 intrahemispheric connections and 35 interhemispheric connections. An additional subnetwork was identified in NBS within the low gamma range which was significant at a range of t statistic thresholds from 1 to 4 (Fig. 4). This subnetwork in the canonical gamma frequency range included 17 intrahemispheric connections and 5 interhemispheric connections. Network strength was computed for both the beta and the gamma subnetworks and related to performance on standardized assessments of language and general abilities across and within groups. Strength in the beta and gamma subnetworks was not significantly related to performance across groups or within the TC group. However, for the EPT group exclusively, strength of the subnetwork identified in the gamma frequency band was positively correlated with standardized expressive language scores on the EVT (Fig. 5, r = 0.32, p < 0.05).

As an exploratory analysis, we assessed for significant differences in language scores and brain connectivity by sex (female versus male) due to the known differential effect of sex on prematurity and language (Benavides et al., 2019; O'Driscoll et al., 2018). Within the EPT group, there were no significant differences in neurobehavioral scores, but females did have significantly higher network strength in both the beta band (mean strength 65.39 for males and 70.89 for females, p < 0.05) and in the gamma band (mean strength 24.8 for males and 26.88 for females, p < 0.05). Across groups, there were no significant differences by sex in neurobehavioral scores or gamma connectivity, but there was significantly higher network strength in the beta band for females (mean



**Fig. 1.** Functional MRI activation maps and resultant network nodes. A) Five slices through temporal, parietal, and left frontal language areas showing general linear model (GLM) analysis across all participants (EPT + TC) with typical bilateral activation in response to language stimuli (auditorily presented nouns for verb generation) versus noise condition ( $p < 0.001$ ,  $k = 8$ ). Each axial slice is labeled in terms of z-coordinates on the template (MNI) brain. B) The initial activation map across the entire sample is subjected to a 200-unit parcellation scheme to produce the 25 “nodes” for network analysis, shown in blue. (For interpretation of the references to colour in this figure legend, the reader is referred to the web version of this article.)

strength 59.0 for males and 64.66 for females,  $p < 0.05$ ). Within the control group, there were no significant differences between males and females.

#### 4. Discussion

In this contemporary cohort study of extremely preterm children with no known brain injury or neurological disorder and their term comparison children, we demonstrate significantly increased functional connectivity as indexed by MEG in preterm children versus term controls. This functional hyperconnectivity is significantly related to performance on standardized assessments of expressive language for the EPT group exclusively, despite no significant differences on language representation using conventionally analyzed task-based functional MRI. There were no significant differences between groups in WNV scores, used as a marker of general abilities. Functional connectivity was not significantly related to WNV scores, so our observed findings should not be attributed to global differences in performance or intelligence. As such, functional hyperconnectivity of areas known to support language in preterm children might represent an alternate developmental trajectory or compensatory network which enables EPT children to perform within normal limits on language assessments and comparably to term controls. This work is congruent with our earlier MEG and fMRI work on a smaller sample of EPT children and their term controls reporting functional and effective hyperconnectivity in the beta band for preterm children during a receptive stories listing task.

This work is significant in that it reports neuromagnetic findings in

the largest cohort of extremely preterm children with magnetoencephalography and structural and functional magnetic resonance imaging that we know of to date. It is also important to note that these children are without known brain injury, so the findings likely represent a relatively “pure” effect of the dysmaturation that occurs due to preterm birth and not due to other common comorbid conditions such as periventricular leukomalacia or intraventricular hemorrhage. There were no significant differences between groups in terms of family income or parental education. These variables are often used in indices of socioeconomic status, or SES, which are known to have differential impacts on both language and outcomes in prematurity. Furthermore, although there were no significant effects of sex on the connectivity results or on neuropsychological assessments when explored through bivariate correlations or independent samples t tests across groups (EPT + TC) or within the TC group, within the EPT group there were significant sex differences, with females exhibiting significantly increased network strength in both the beta and gamma frequency bands. There were no performance differences between preterm males and females. This finding warrants further investigation.

When viewed in the context of reported research from our group and from other labs, it seems that differential neuronal activation frequencies (beta versus gamma, etc.) and relationship to performance could be due to different task demands. For example, our prior work reported functional hyperconnectivity in the beta frequency range during a stories listening task. This verb generation task requires not only auditory processing and comprehension but also semantic retrieval and language production. The gamma hyperconnectivity we report as

**Table 2**  
Virtual Sensor Coordinates By Region.

	MNI Coordinates	Brodman Area	Region	
Left Frontal	-28,30,-16	47	Left Orbital Inferior Frontal	
	-40,43,9	46	Left Dorsolateral Prefrontal	
	-42, 28, 25	9	Left Triangular Inferior Frontal	
	-9,28,53	8	Left Superior Frontal	
	-9,7,63	6	Left Supplemental Motor	
	-44,7,30	6	Left Precentral	
	-55, -11, 7	41	Left Heschl	
	-48,0,-17	38	Left Temporal Pole	
	-55,-53,5	39	Left Angular	
	-61,-22,-1	22	Left Superior Temporal	
Left Temporal	-59,-30,13	22	Left Superior Temporal	
	-57,-35,-6	21	Left Middle Temporal	
	-56,-16,-16	21	Left Middle Temporal	
	-32,19,0	13	Left Insula	
	-49,4,-1	Not Defined	Left Superior Temporal	
	-44,15,-16	Not Defined	Left Temporal Pole	
	-45,-34,13	40	Left Parietal	
	54,10,0	44	Right Pars Opercularis	
	Right Temporal	62,-14,-1	22	Right Superior Temporal
		51,-34,11	22	Right Superior Temporal
45,-13,-6		22	Right Superior Temporal	
64,-40,9		22	Right Superior Temporal	
62, -35, -8		21	Right Middle Temporal	
56,-1,-21		21	Right Middle Temporal	
37,17,1		13	Right Insula	

Note: MNI = Montreal Neurological Institute, Region defined by Brodmann or Automated Anatomical Labeling (AAL) Atlas.

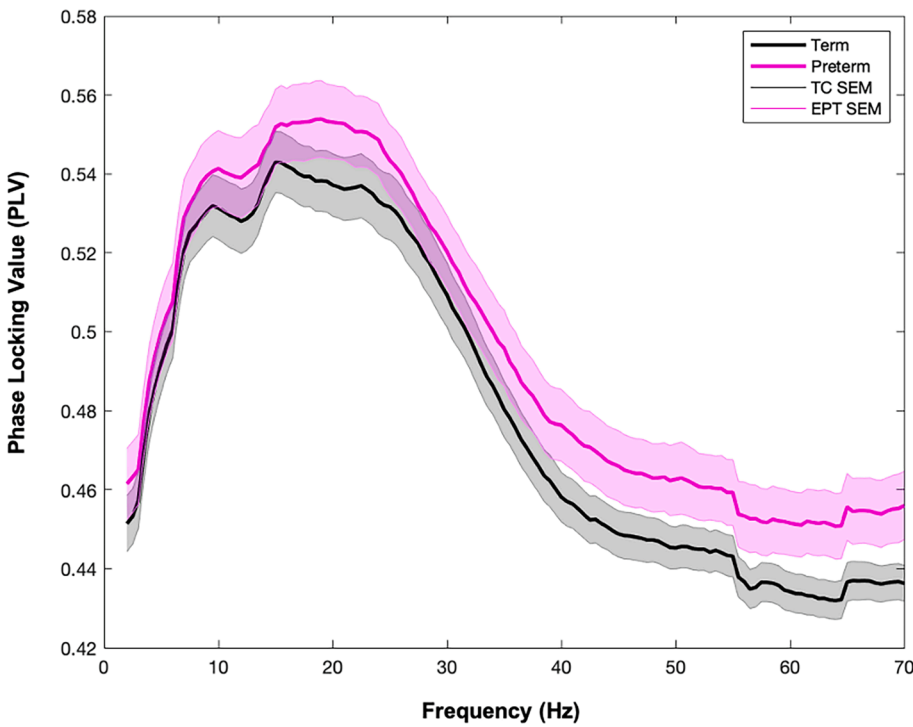
being significantly related to expressive language scores is known to be important in the typical development of language skills in children. Benasich et al found that children less than 3 years of age with a family history of language impairment had lower resting gamma connectivity on electroencephalography (EEG) than term children without a history of language impairment (Benasich et al., 2008). In prior EEG work investigating the ontogeny of EEG activity and synchronization before and after term equivalent age, gamma activation is of particular interest (Vanhatalo & Kaila, 2006). Higher frequency activation and synchrony becomes more prominent as interneuronal signaling matures during the same gestational period in which our preterm participants were born (Tokariev et al., 2012; Vanhatalo & Kaila, 2006).

Our study has some relative limitations. The verb generation task was covert. Therefore, it might be difficult to gauge engagement and performance during the task. Although we do ask participants about the stimuli afterwards to gauge their engagement, we do not have formal testing to investigate differences in attention or focus during the task. Indeed, this is a problem with any covert task. We felt that this was requisite to minimize motion artifact from an overt task. However, all participants demonstrated they could perform the task well during the practice items. Additionally, 11 out of 73 children had structural MRI and task-based MEG but did not complete the verb generation task in functional MRI. The verb generation task in fMRI was the last task of our study visit, and was sometimes excluded from the visit if the family was

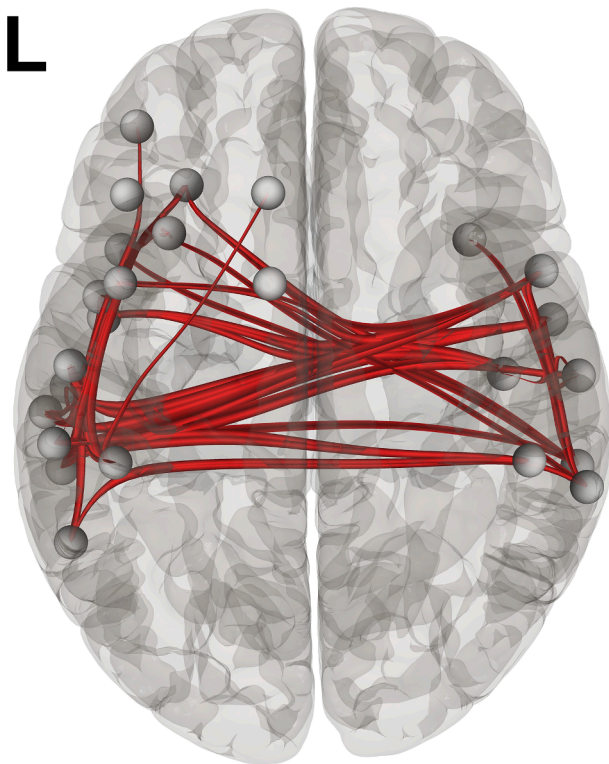
late for their appointment due to time constraints or stopped early if the child stated they were finished with imaging for the day. We will attempt to rectify this in future studies. We combined task-based fMRI data from 2 slightly different acquisitions on the same scanner using the same stimuli. We do not run connectivity analyses on the fMRI data and use it only to determine if differences in representation differ between groups before binarizing the first level contrast maps of activation to extract virtual sensors for MEG analyses. There were no differences in fMRI representation by group (both with and without regressing out activation differences due to acquisition). Therefore, differences in fMRI acquisition (if any exist) should not impact our MEG connectivity analyses. We did employ a sharp discrete Fourier transform filter at 60 Hz and we did use +/- 5 Hz frequency smoothing which is why a depression can be seen between 55 and 65 Hz in Fig. 2. Importantly, the filter impacts both groups equally, and the connectivity difference extends well beyond this range (40–70 Hz). The power spectra across groups (not shown) were identical in the 55 and 65 Hz range, suggesting that group difference is specific to connectivity space. Controlling for multiple comparisons is a key aspect in any neuroimaging study. Due to sample size considerations, we performed a priori, planned comparisons and regression to specifically address our research questions. We took this approach with intention and consideration, seeking to avoid the need to correct for multiple comparisons and the concomitant loss of power that would occur. In the future, we will enroll larger cohorts and have the ability to perform more rigorous statistical comparisons. It should also be noted that a subsample of these participants ( $n = 25$ ) was previously included in an earlier research report from this group employing a different imaging task (Barnes-Davis et al., 2018). Finally, our preterm group and control group both perform very well on standardized assessments of language (although the EPT group has significantly lower scores than the TC group). It is important to note that this is a community acquired self-selected sample and, therefore, might be higher performing than the general population. However, both groups perform within normal limits (standardized mean of 100 +/- 1 standard deviation) and our research question specifically pertains to factors that might help optimize performance in our clinical population.

Our study has a number of unique strengths. This is a contemporary cohort of extremely preterm children from a relatively narrow band of gestational ages (24–27 weeks), including some periviable children for whom resuscitation was entirely elective at time of birth. We excluded known comorbidities of prematurity, such as periventricular leukomalacia and neurological disorders. Due to differential rates of—and impact from—prematurity, we assessed any differences in sex, race, ethnicity, and socioeconomic status and accounted for these factors in analysis, finding no significant differences. Finally, we used a multimodal neuroimaging pipeline that enables investigation into the cortical morphometry (Barnes-Davis, Williamson et al., 2020a); structural connectivity (Barnes-Davis et al., 2020b); functional connectivity (Barnes-Davis et al., 2018); and neurobehavioral outcomes for our preterm and term participants at a single session. Multimodal investigations such as this have received attention recently in the scientific community as a way to increase reproducibility in functional imaging (Botvinik-Nezer et al., 2020).

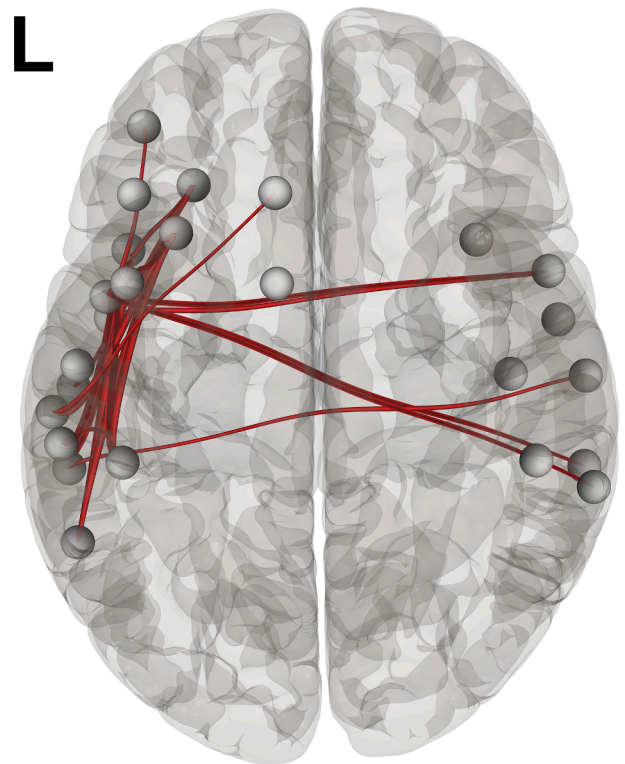
In conclusion, we have demonstrated functional hyperconnectivity as indexed by fMRI-constrained MEG during a covert auditory verb generation task in the gamma frequency band for well-performing children born extremely preterm. Strength in this significant subnetwork (consisting of bilateral temporal and left frontal nodes) positively correlated with expressive language performance for the preterm group exclusively. This might serve as a marker of resiliency in preterm children with no known brain injury or neurological deficit. Future work will expand this cohort and follow them longitudinally to investigate the predictive power of our reported functional hyperconnectivity.



**Fig. 2.** Functional connectivity indexed by phase locking value (PLV) for each group. Phase locking value (PLV) throughout the language network identified in Fig. 1 for extremely preterm children (EPT,  $n = 31$ , shown in pink) and term controls (TC,  $n = 42$ , in black) with standard error shaded around the mean (SEM). Areas of group differences on visual inspection include segments of the beta band (20–25 Hz) and the gamma band (61–70 Hz). (For interpretation of the references to colour in this figure legend, the reader is referred to the web version of this article.)



**Fig. 3.** Extremely preterm children show increased beta functional connectivity in language network. Network “edges” showing significantly increased functional connectivity in EPT versus TC between 20 and 25 Hz during verb generation (observed at various initial thresholds ranging from  $t = 1$  to 2, 5000 iterations,  $p < 0.05$ , corrected for multiple comparisons).

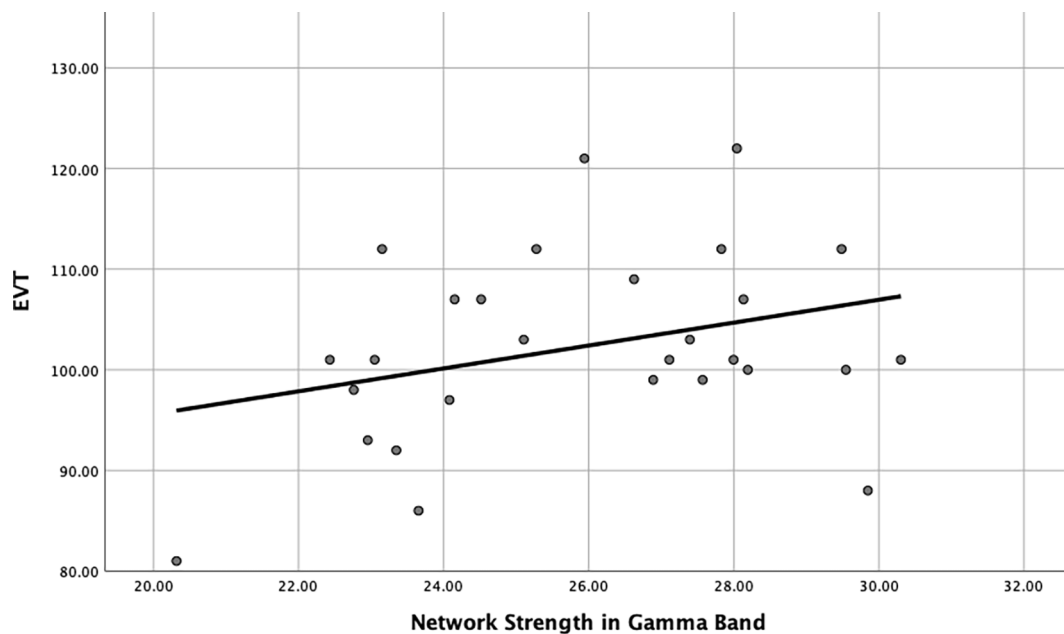


**Fig. 4.** Extremely preterm children show increased gamma functional connectivity in language network. Network “edges” showing significantly increased functional connectivity in EPT versus TC between 61 and 70 Hz during verb generation (observed at various initial thresholds ranging from  $t = 1$  to 4, 5000 iterations,  $p < 0.05$ , corrected for multiple comparisons).

**CRediT authorship contribution statement**

**Maria E. Barnes-Davis:** Conceptualization, Resources, Data

curation, Formal analysis, Funding acquisition, Investigation, Methodology, Project administration, Writing - original draft, Writing - review & editing. **Stephanie L. Merhar:** Conceptualization, Resources,



**Fig. 5.** Relationship between gamma band-limited connectivity (network strength) in the identified subnetwork supporting language and expressive language scores for the preterm group. Scores on the Expressive Vocabulary Test (EVT2) versus network strength within the significant subnetwork identified in gamma band-limited connectivity for the EPT group exclusively. Results indicate a positive bivariate correlation (Pearson's  $r = 0.32$ ,  $p < 0.05$ ). Correlations between EVT scores and network strength were not significant across groups or within the term control group.

Funding acquisition, Investigation, Methodology, Supervision, Writing - review & editing. **Scott K. Holland:** Conceptualization, Supervision, Writing - review & editing. **Nehal A. Parikh:** Conceptualization, Resources, Funding acquisition, Investigation, Methodology, Supervision, Writing - review & editing. **Darren S. Kadis:** Conceptualization, Resources, Data curation, Formal analysis, Funding acquisition, Investigation, Methodology, Project administration, Supervision, Writing - review & editing.

#### Declaration of Competing Interest

The authors declare that they have no known competing financial interests or personal relationships that could have appeared to influence the work reported in this paper.

#### Acknowledgements

We thank the participants and their families. We acknowledge the study coordination of Adrienne King, Cameron Laue, Claudio Toro-Serey, Sara Stacey, and Sandra Wuertz. This work was funded by an award from the National Institute of Child Health and Human Development (K12 HD028827 for MEB-D); an award from the National Center for Advancing Translational Sciences (KL2 TR001426 for SLM); awards from the National Institute of Neurological Disorders and Stroke (R01-NS096037 and R01-NS094200 for NAP); and by a Trustee Award Grant (DSK), a Shared Facilities Discovery Award (SLM), and an Arnold W. Strauss Fellowship Award for Excellence in Research (MEB-D) from the Cincinnati Children's Hospital Medical Center.

#### References

- Adams-Chapman, I., Heyne, R.J., DeMauro, S.B., Duncan, A.F., Hintz, S.R., Pappas, A., Vohr, B.R., McDonald, S.A., Das, A., Newman, J.E., Higgins, R.D., 2018. Neurodevelopmental impairment among extremely preterm infants in the neonatal research network. *Pediatrics* 141 (5), e20173091. <https://doi.org/10.1542/peds.2017-3091>.
- Barnes-Davis, M. E., Merhar, S. L., Holland, S. K., & Kadis, D. S. (2018). Extremely Preterm Children Exhibit Increased Interhemispheric Connectivity For Language: Findings From Fmri-Constrained Meg Analysis. *Dev Sci*, E12669.

- Barnes-Davis, M.E., Williamson, B.J., Merhar, S.L., Holland, S.K., Kadis, D.S., 2020a. Extremely preterm children exhibit altered cortical thickness in language areas. *Scientific Rep.* 10 (1), 10824.
- Barnes-Davis, M.E., Williamson, B.J., Merhar, S.L., Holland, S.K., Kadis, D.S., 2020b. Rewiring The Extremely Preterm Brain Altered Structural Connectivity Relates To Language Function. *Neuroimage: Clin.* 102194.
- Barre, N., Morgan, A., Doyle, L.W., Anderson, P.J., 2011. Language abilities in children who were very preterm and/or very low birth weight: a meta-analysis. *J. Pediatr.* 158 (5), 766–774.e1.
- Bastos, A.M., Schoffelen, J.-M., 2016. A tutorial review of functional connectivity analysis methods and their interpretational pitfalls. *Front. Syst. Neurosci.* 9 (175).
- Benasich, A.A., Gou, Z., Choudhury, N., Harris, K.D., 2008. Early cognitive and language skills are linked to resting frontal gamma power across the first 3 years. *Behav. Brain Res.* 195 (2), 215–222.
- Benavides, A., Metzger, A., Tereshchenko, A., Conrad, A., Bell, E.F., Spencer, J., Ross-Sheehy, S., Georgieff, M., Magnotta, V., Nopoulos, P., 2019. Sex-specific alterations in preterm brain. *Pediatr. Res.* 85 (1), 55–62.
- Blencowe, H., Cousens, S., Chou, D., Oestergaard, M., Say, L., Moller, A.-B., Born Too Soon Preterm Birth Action, G. (2013). Born too soon: the global epidemiology of 15 million preterm births. *Reproduct. Health*, 10 Suppl 1(Suppl 1), S2-S2.
- Botvinik-Nezer, R., Holzmeister, F., Camerer, C.F., Dreber, A., Huber, J., Johannesson, M., Schonberg, T., 2020. Variability in the analysis of a single neuroimaging dataset by many teams. *Nature* 582 (7810), 84–88.
- Choi, E.J., Vandewouw, M.M., Young, J.M., Taylor, M.J., 2018. Language network function in young children born very preterm. *Front. Hum. Neurosci.* 12, 512.
- Craddock, R., James, G., Holtzheimer, P., Hu, X., & Mayberg, H. (2012). A Whole Brain Fmri Atlas Generated Via Spatially Constrained Spectral Clustering. *Hum Brain Mapp*, 33.
- Doesburg, S.M., Moiseev, A., Herdman, A.T., Ribary, U., Grunau, R.E., 2013. Region-specific slowing of alpha oscillations is associated with visual-perceptual abilities in children born very preterm. *Front. Hum. Neurosci.* 7, 791.
- Doesburg, S.M., Ribary, U., Herdman, A.T., Miller, S.P., Poskitt, K.J., Moiseev, A., Whitfield, M.F., Synnes, A., Grunau, R.E., 2011a. Altered long-range alpha-band synchronization during visual short-term memory retention in children born very preterm. *Neuroimage* 54 (3), 2330–2339.
- Doesburg, S.M., Ribary, U., Herdman, A.T., Moiseev, A., Cheung, T., Miller, S.P., Poskitt, K.J., Weinberg, H., Whitfield, M.F., Synnes, A., Grunau, R.E., 2011b. Magnetoencephalography reveals slowing of resting peak oscillatory frequency in children born very preterm. *Pediatr. Res.* 70 (2), 171–175.
- Dunn, L.M., Dunn, D.M., Lenhard, A., 2015. Peabody Picture Vocabulary Test. Pearson, Ppvt 4.
- Foster-Cohen, S., Edgin, J.O., Champion, P.R., Woodward, L.J., 2007. Early delayed language development in very preterm infants: evidence from the macarthur-bates Cdi. *J. Child. Lang.* 34 (3), 655–675.
- Foster-Cohen, S., Friesen, M.D., Champion, P.R., Woodward, L.J., 2010. High prevalence/low severity language delay in preschool children born very preterm. *J. Dev. Behav. Pediatr.* 31 (8), 658–667.



- Garfield, C.F., Karbownik, K., Murthy, K., Falciglia, G., Guryan, J., Figlio, D.N., Roth, J., 2017. Educational performance of children born prematurely. *Jama Pediatr.* 171 (8), 764. <https://doi.org/10.1001/jamapediatrics.2017.1020>.
- Gozzo, Y., Vohr, B., Lacadie, C., Hampson, M., Katz, K.H., Maller-Kesselman, J., Schneider, K.C., Peterson, B.S., Rajeevan, N., Makuch, R.W., Constable, R.T., Ment, L.R., 2009. Alterations in neural connectivity in preterm children at school age. *Neuroimage* 48 (2), 458–463.
- Holland, S.K., Plante, E., Weber Byars, A., Strawsburg, R.H., Schmithorst, V.J., Ball, W.S., 2001. Normal Fmri brain activation patterns in children performing a verb generation task. *Neuroimage* 14 (4), 837–843.
- Hutchinson, E.A., De Luca, C.R., Doyle, L.W., Roberts, G., Anderson, P.J., 2013. School-age outcomes of extremely preterm or extremely low birth weight children. *Pediatrics* 131 (4), e1053–e1061.
- Kadis, D.S., Dimitrijevic, A., Toro-Serey, C.A., Smith, M.L., Holland, S.K., 2016. Characterizing information flux within the distributed pediatric expressive language network: a core region mapped through Fmri-constrained meg effective connectivity analyses. *Brain Connect.* 6 (1), 76–83.
- Kadis, D.S., Pang, E.W., Mills, T., Taylor, M.J., McAndrews, M.P., Smith, M.L., 2011. Characterizing the normal developmental trajectory of expressive language lateralization using magnetoencephalography. *J. Int. Neuropsychol. Soc.* 17 (05), 896–904.
- Kwon, S.H., Scheinost, D., Lacadie, C., Sze, G., Schneider, K.C., Dai, F., Constable, R.T., Ment, L.R., 2015. Adaptive mechanisms of developing brain: cerebral lateralization in the prematurely-born. *Neuroimage* 108, 144–150.
- Kwon, S.H., Scheinost, D., Vohr, B., Lacadie, C., Schneider, K., Dai, F., Sze, G., Constable, R.T., Ment, L.R., 2016. Functional magnetic resonance connectivity studies in infants born preterm: suggestions of proximate and long-lasting changes in language organization. *Dev. Med. Child. Neurol.* 58, 28–34.
- Lachaux, J.-P., Rodriguez, E., Martinerie, J., Varela, F.J., 1999. Measuring phase synchrony in brain signals. *Hum. Brain Mapp.* 8 (4), 194–208.
- Leavy, M. P., Prina, M. V., Martinez Caceres, M. J., & Bauer, G. (2015). Social Representations Of Premature Birth From The Perspective Of Individuals Born Preterm In The 1990s.
- Luttikhuisen dos Santos, E.S., de Kieviet, J.F., Königs, M., van Elburg, R.M., Oosterlaan, J., 2013. Predictive value of the bayley scales of infant development on development of very preterm/very low birth weight children: a meta-analysis. *Early Hum. Dev.* 89 (7), 487–496.
- Luu, T.M., Vohr, B.R., Schneider, K.C., Katz, K.H., Tucker, R., Allan, W.C., Ment, L.R., 2009. Trajectories of receptive language development from 3 to 12 years of age for very preterm children. *Pediatrics* 124 (1), 333–341.
- Martin, J., Hamilton, B., Osterman, M., Driscoll, A., 2019. Births: final data for 2018. *National Vital Statistics Reports* 68 (13).
- Ment, L.R., Peterson, B.S., Meltzer, J.A., Vohr, B., Allan, W., Katz, K.H., Lacadie, C., Schneider, K.C., Duncan, C.C., Makuch, R.W., Constable, R.T., 2006. A functional magnetic resonance imaging study of the long-term influences of early indomethacin exposure on language processing in the brains of prematurely born children. *Pediatrics* 118 (3), 961–970.
- Mikkola, K., Ritari, N., Tommiska, V., Salokorpi, T., Lehtonen, L., Tammela, O., Fellman, V., 2005. Neurodevelopmental outcome at 5 years of age of a national cohort of extremely low birth weight infants who were born in 1996–1997. *Pediatrics* 116 (6), 1391–1400.
- Moore, G.P., Lemyre, B., Barrowman, N., Daboval, T., 2013. Neurodevelopmental outcomes at 4 to 8 years of children born at 22 to 25 weeks' gestational age: a meta-analysis. *Jama Pediatr.* 167 (10), 967–974.
- Mossad, S.I., Smith, M.L., Pang, E.W., Taylor, M.J., 2017. Neural correlates of “Theory Of Mind” in very preterm born children. *Hum. Brain Mapp.* 38 (11), 5577–5589.
- Mullen, K.M., Vohr, B.R., Katz, K.H., Schneider, K.C., Lacadie, C., Hampson, M., Makuch, R.W., Reiss, A.L., Constable, R.T., Ment, L.R., 2011. Preterm birth results in alterations in neural connectivity at age 16 years. *Neuroimage* 54 (4), 2563–2570.
- Myers, E.H., Hampson, M., Vohr, B., Lacadie, C., Frost, S.J., Pugh, K.R., Katz, K.H., Schneider, K.C., Makuch, R.W., Constable, R.T., Ment, L.R., 2010. Functional connectivity to a right hemisphere language center in prematurely born adolescents. *Neuroimage* 51 (4), 1445–1452.
- Nolte, G., 2003. The magnetic lead field theorem in the quasi-static approximation and its use for magnetoencephalography forward calculation in realistic volume conductors. *Phys. Med. Biol.* 48 (22), 3637–3652.
- O'Driscoll, D.N., McGovern, M., Greene, C.M., Molloy, E.J., 2018. Gender disparities in preterm neonatal outcomes. *Acta Paediatr.* 107 (9), 1494–1499.
- Oostenveld, R., Fries, P., Maris, E., Schoffelen, J.-M., 2011. Fieldtrip: open source software for advanced analysis of meg, Eeg, and invasive electrophysiological data. *Computat. Intellig. Neurosci.* 2011, 1–9.
- Saigal, S. (2014). *Preemie Voices: Young Men And Women Born Very Prematurely Describe Their Lives, Challenges And Achievements*. Friesenpress.
- Sato, J., Mossad, S.I., Wong, S.M., Hunt, B.A.E., Dunkley, B.T., Urbain, C., Taylor, M.J., 2019. Spectral slowing is associated with working memory performance in children born very preterm. *Sci. Rep.* 9 (1), 15757.
- Schafer, R.J., Lacadie, C., Vohr, B., Kesler, S.R., Katz, K.H., Schneider, K.C., Pugh, K.R., Makuch, R.W., Reiss, A.L., Constable, R.T., Ment, L.R., 2009. Alterations in functional connectivity for language in prematurely born adolescents. *Brain J. Neurol.* 132 (3), 661–670.
- Scheinost, D., Lacadie, C., Vohr, B.R., Schneider, K.C., Papademetris, X., Constable, R.T., Ment, L.R., 2015. Cerebral lateralization is protective in the very prematurely born. *Cereb. Cortex* 25 (7), 1858–1866.
- Tokariev, A., Palmu, K., Lano, A., Metsäranta, M., Vanhatalo, S., 2012. Phase synchrony in the early preterm Eeg: development of methods for estimating synchrony in both oscillations and events. *Neuroimage* 60 (2), 1562–1573.
- van Noort-van der Spek, I.L., Franken, M.-C., Weisglas-Kuperus, N., 2012. Language functions in preterm-born children: a systematic review and meta-analysis. *Pediatrics* 129 (4), 745–754.
- Vanhatalo, S., Kaila, K., 2006. Development of neonatal Eeg activity: from phenomenology to physiology. *Semin. Fetal Neonatal. Med.* 11 (6), 471–478.
- Vieira, M.E.B., Linhares, M.B.M., 2011. Developmental outcomes and quality of life in children born preterm at preschool- and school-age. *J. Pediatr. (Rio J.)* 87 (4), 281–291.
- Vohr, B., 2014. Speech and language outcomes of very preterm infants. *Semin. Fetal Neonatal. Med.* 19 (2), 78–83.
- Wechsler, D., Naglieri, J., 2006. *Wechsler Nonverbal Scale Of Ability*. Harcourt Assessments, San Antonio, Tx.
- Wilke, M., Hauser, T.-K., Krägeloh-Mann, I., Lidzba, K., 2014. Specific Impairment Of Functional Connectivity Between Language Regions In Former Early Preterms. *Hum. Brain Mapp.* 35 (7), 3372–3384.
- Williams, K.T., 2007. *Evt2: expressive vocabulary test*, Second Edition. Pearson, San Antonio, Tx.
- Woods, P.L., Rieger, I., Wocadlo, C., Gordon, A., 2014. Predicting the outcome of specific language impairment at five years of age through early developmental assessment in preterm infants. *Early Hum. Dev.* 90 (10), 613–619.
- Ye, A.X., Aucoin-Power, M., Taylor, M.J., Doesburg, S.M., 2016. Disconnected neuromagnetic networks in children born very preterm: disconnected meg networks in preterm children. *Neuroimage Clin.* 11, 376–384.
- Youssofzadeh, V., Williamson, B. J., & Kadis, D. S. (2017). Mapping critical language sites in children performing verb generation: whole-brain connectivity and graph theoretical analysis In *Meg*. *Front. Hum. Neurosci.* 11, 173–173.
- Zalesky, A., Fornito, A., Bullmore, E.T., 2010. Network-based statistic: identifying differences in brain networks. *Neuroimage* 53 (4), 1197–1207.