

CASE REPORT

Open Access

Ectopic thyroid mass in the left lateral neck and anterior mediastinum: a case report

Jiangling Wang* and Jun Fang

Abstract

Introduction: Ectopic thyroid is characterized by the presence of thyroid tissue in a site other than in its usual pretracheal region. It is a rare condition among the thyroid diseases. Dural ectopic thyroid present in the cervical and anterior mediastinal has not been reported.

Case presentation: A 45-year-old Chinese woman presented with a nonfunctional ectopic thyroid located both in the cervical and anterior mediastinum. The ectopic thyroid was removed under video-assisted thoracoscopic surgery using a transverse neck incision and her postoperative period has been uneventful thus far.

Conclusions: Ectopic thyroid is a rare condition among the thyroid diseases, and its location in the anterior mediastinum is even more uncommon. Less than 15 cases have been reported in the last four decades. This is the first case of ectopic thyroid to appear in both the cervical and anterior mediastinum at same time. Masses in the anterior mediastinal are usually thymoma, lymphoma, pheochromocytoma and germ cell tumors. Ectopic thyroid in this area is quite rare so this case enhances our understanding of the diagnosis of mediastinal masses.

Keywords: Ectopic thyroid, Anterior mediastinum

Introduction

Ectopic anterior mediastinal thyroid is a very rare clinical entity; the incidence of this disease is less than 1 percent of all cases [1,2]. The most frequent locations are along the midline from the base of the tongue to the mediastinum [3]. Other locations like the trachea, heart, lung, duodenum, adrenal gland, gall bladder, porta hepatis, esophagus, parotid salivary gland have been reported [3-5]. Mediastinum thyroid must be differentiated from germ cell tumors, lymphomas, neurogenic tumors, thymic and mesenchymal tumors, as well as cervical goiter extending into the mediastinum and ganglioneuromas [2,6-10].

Case presentation

A 45-year-old Chinese woman was admitted to hospital because of anterior chest pain for the previous 10 days. Our patient's height and weight were 165cm, and 75kg, respectively. Her review of systems was unremarkable and her physical examinations and laboratory tests showed no abnormalities. An enhanced computed tomography (ECT)

scan revealed a $2.4 \times 1.4 \times 2.8 \text{cm}^3$ nodule under her left thyroid lobe, mild inflammation in both lungs and a $4 \times 2.5 \text{cm}^2$ mass in her anterior mediastinum. Both the nodule and the anterior mediastinal mass displayed higher density in enhanced image, just like thyroid tissue (Figure 1).

Her blood test revealed that levels of thyroid-stimulating hormone and free thyroid hormone were normal. Antithyroglobulin antibodies and antithyroid peroxidase antibodies were also within normal range. An ultrasound of her thyroid revealed various hypoechoic nodules in her upper left lobe (the largest one measuring $0.6 \times 0.4 \text{cm}^2$) and in her lower right lobe (the largest one measuring $1.2 \times 1.0 \text{cm}^2$). Both the color Doppler flow image (CDFI) signals from these nodules were normal. There was another nodule (measuring $2.4 \times 1.4 \times 2.8 \text{cm}^3$) under her left lobe and the CDFI signal was between level 1 to 2. No cervical adenopathy was detected and the ultrasound scan of her abdominal organs was normal (Figure 2).

Technetium-99m was used to determine whether the anterior mediastinal mass was an ectopic thyroid. Compared with the higher density of radioactivity uptake in thyroid, the anterior mediastinal mass showed no increase in uptake of radioactivity in static imaging (Figure 3).

* Correspondence: WJL200408@163.com
Department of Anesthesiology, Cancer Hospital of Zhejiang Province, No. 38, Guangji Road, Hangzhou, Zhejiang Province, PR China

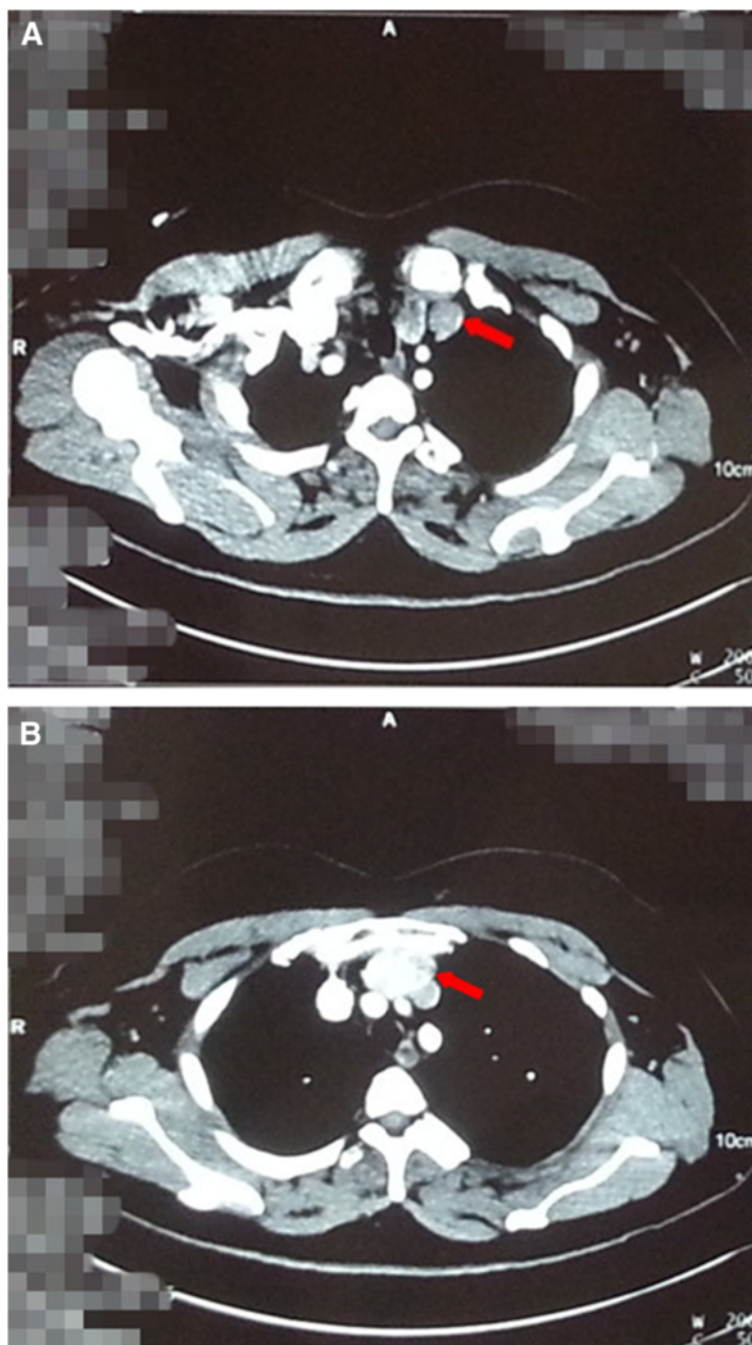


Figure 1 Enhanced computed tomographic scan revealed a nodule under left thyroid lobe (Figure 1A red arrow) and an anterior mediastinum mass (Figure 1B red arrow). Both the nodule and anterior mass have higher density as thyroid.

An anterior mediastinal mass resection was planned to be carried out under video-assisted thoracoscopic surgery. Total thyroidectomy was not performed as her thyroid function was normal.

The results of commonly ordered preoperative tests, including a laboratory test, pulmonary function and electrocardiogram, met with the requirements of the operation. The patient's American Society of Anesthesiologists (ASA)

physical status was class II. Advances in anesthetic technique also facilitated proper preoperative management.

Our patient was placed into the right lateral recumbent (RLR) position after total intravenous anesthesia. A video thoracoscope was placed through the port in the seventh intercostal space along the left midaxillary line. Intraoperative exploration demonstrated the anterior superior mediastinum was occupied by the mass. The



Figure 2 Ultrasound scan of a separate nodule under the left thyroid lobe. The ultrasound scan revealed a separate nodule under the left lobe.

substernal tumor was located anteromedial to the left innominate vein, without signs of infiltration and well delineated by a capsule, measuring around $3 \times 2 \text{ cm}^2$, and surrounded by blood vessels derived from intrathoracic blood vessels. The lower part of the mass was easily separated by a coagulation hook and ultrasonic knife, but the upper part was difficult to expose. A transverse neck incision was decided upon to assist the tumor excision as the nodule under her left thyroid was 0.5 cm away from the lower part of the lobe, with a well-defined capsule and no obvious connection with the thyroid gland. The surgeon first removed the nodule and further intraoperative findings confirmed the encapsulated anterior mediastinum mass was behind the sternum. It had no connection to the cervical thyroid gland or to the nodule under her left lobe. The mass was separated and removed from the upper incision with thoracoscope assistance. The reports on the frozen sections of the two surgical samples were consistent with ectopic substernal thyroid tissue. A postoperative histopathologic examination of the masses, using hematoxylin and eosin, revealed both of the masses were multinodular goiters (Figure 4). Our patient had no chest pain after the mass resection. Her postoperative period was uneventful and she was discharged three days after surgery.

Discussion

The maturation of the thyroid gland during the embryonic period follows the line from the base of the tongue to the mediastinum. Most ectopic thyroid (90 percent) have been found at the base of the tongue. Less than 1 percent has been reported in the mediastinum [1,3]. Typical substernal thyroid is always extended from the neck. Differential diagnosis for lateral cervical mass usually includes ectopia, thymic cyst and thymoma [7]. Mediastinum thyroid must be differentiated from germ cell tumors, lymphomas, neurogenic tumors and thymic and mesenchymal tumors [6]. Primary mediastinal ectopic thyroid, whose blood supply is typically from thoracic vessels, is quite rare [3,5]. Malignant transformation of ectopic thyroid is rare and is reported in about 15 percent of patients [6]. Moreover, cases of ectopic thyroid cancer are uncommon and true mediastinal thyroid cancer is extremely rare. One case was reported in 2006 [11].

Ectopic anterior mediastinal thyroid is often asymptomatic and patients are usually euthyroid. However, symptoms like cough, dyspnea, chest pain, and obstruction of the superior vena cava may occur because of the compression of organs and/or surrounding tissues. The main cause of the chest pain in this case may be due to compression of nerve(s) and tissues by the anterior mediastinal mass.

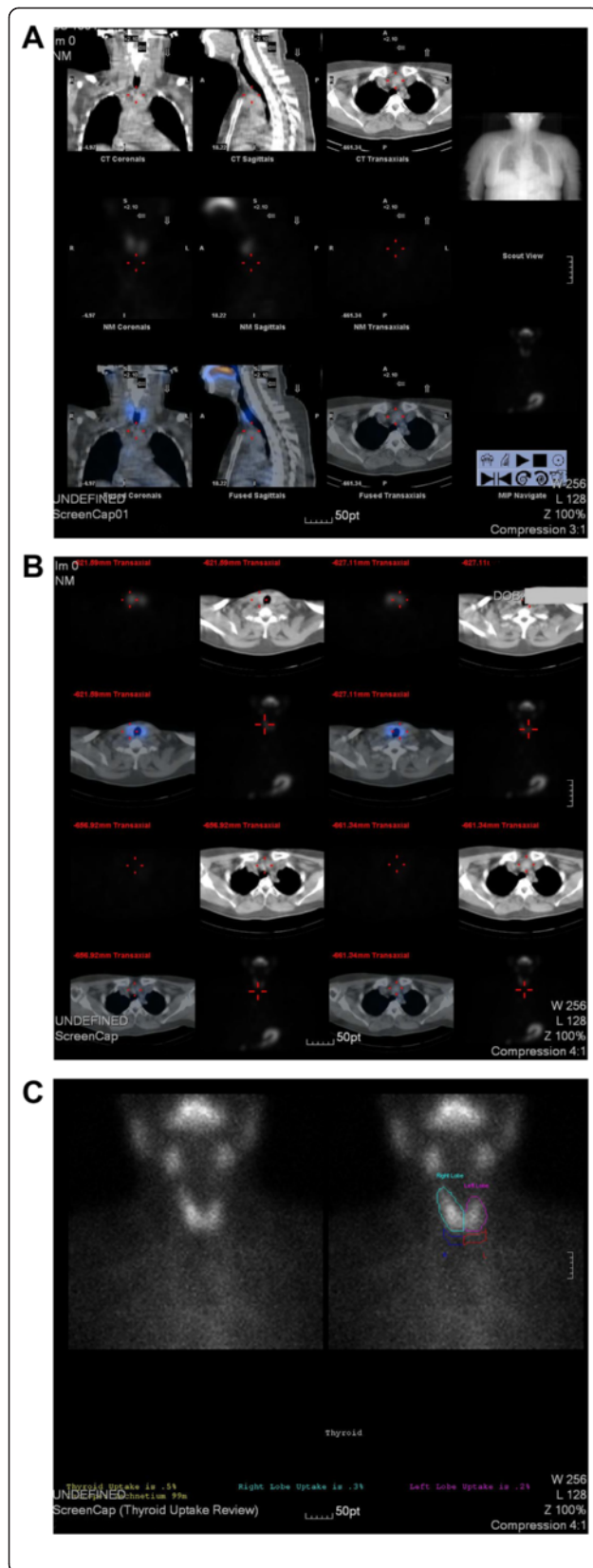


Figure 3 Radioactivity uptake of the nodule and anterior mediastinal mass. Scintigraphy, using Tc-99m, revealed both the nodule under the left thyroid lobe and the anterior mediastinal mass have no increase of radioactivity uptake in static imaging. Figure A revealed the coronal plane, sagittal plane and transverse plane of radioactivity uptake. Figure B revealed the transverse plane of radioactivity uptake and Figure C is the review image for the thyroid uptake.

Thoracoscopy has been described as useful in both the diagnosis and resection of mediastinal masses and thoracoscopic excision has also been reported with excellent results. However, operability is unable to be confirmed earlier, not until after surgery in many cases [9].

In symptomatic cases, surgery is the treatment of choice and further treatment like radioiodine ablation and levothyroxine suppression may be needed for refractory cases located in the lateral neck [6,12]. Thoracotomy or sternotomy are mostly used for mediastinal mass excision [6]. Regular follow-up is recommended after surgery in case changes of the euthyroid multinodular goiter occur [8].

There are fewer cases reported of intrathoracic (mediastinal) thyroid and ectopic thyroid tissue developing in the thorax distinct from the cervical thyroid gland is extremely rare. Most cases of ectopic thyroid are solo nodules, unlike the case presented here where the two masses have a well-defined capsule and no obvious connection between them. Ectopic thyroid can be distinguished from secondary goiters by the following criteria: it has an independent blood supply from intrathoracic vessels rather than cervical vessels, the cervical thyroid gland is normal, the pathologic process is different between the cervical gland and the ectopic mass, and without history of malignancy [13]. This case meets all the criteria and postoperative pathology confirms it was ectopic multinodular goiter.

A thoracoscopic approach for mediastinal tumor resection is widely used because of its convenience and less trauma. A thoracoscopic approach was the first choice in this case but transverse neck incision assistance was performed due to the incomplete exposure of the anterior mass. Ectopic thyroid should be considered during the diagnosis of mediastinal masses as there is a risk of hypothyroidism after surgery if the ectopic thyroid is non-functional [14].

Conclusions

In conclusion, we present an uncommon ectopic anterior mediastinal goiter with complete excision and relief of all symptoms after surgery. Although ectopic mediastinal thyroid is very rare, we should consider it in diagnosis of all mediastinal masses. Surgical resection is the first choice when there are symptoms, as they have potential to become malignant and compress surrounding tissues. Surgical

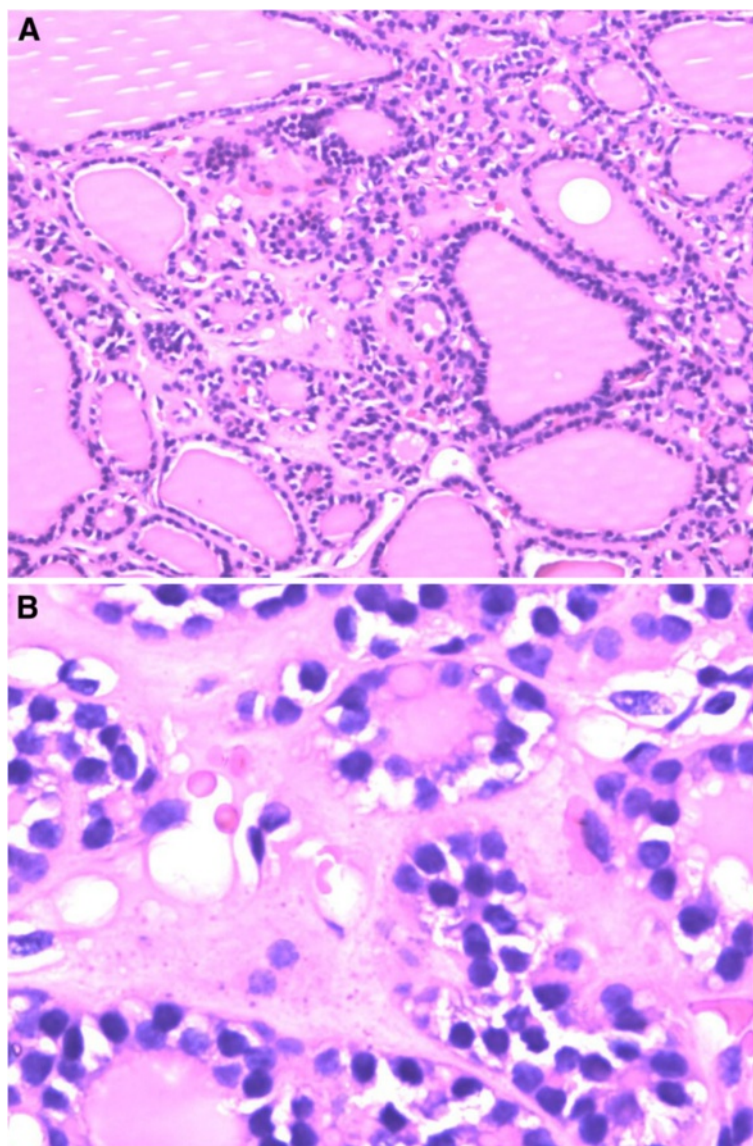


Figure 4 Photomicrograph of the histopathologic examination of both the nodule and the mass. Photomicrograph of the histopathologic examination revealed both the nodule and the mass were multinodular goiter. Hematoxylin and eosin stain. $\times 40$ for (A) $\times 100$ for (B).

excision of mediastinal ectopic thyroid is useful for both diagnosis and treatment.

Consent

Written informed consent was obtained from the patient for publication of this case report and any accompanying images. A copy of the written consent is available for review by the Editor-in-Chief of this journal.

Abbreviations

ASA: American Society of Anesthesiologists; CDFI: color Doppler flow image; ECT: enhanced computed tomography; RLR: right lateral recumbent.

Competing interests

The authors declare that they have no competing interests.

Authors' contributions

JLW was a major contributor in writing the manuscript. JF provided important suggestions regarding medical content. Both authors read and approved the final manuscript.

Acknowledgements

We gratefully acknowledge the valuable advice provided by Dr Xinming Zhou and Xun Yang. We also appreciate and acknowledge Jianqiang Li and Changchun Wang for the advice and help in postoperative follow-up.

Received: 12 March 2014 Accepted: 21 July 2014

Published: 21 October 2014

References

1. Gamblin TC, Jennings GR, Christie DB III, Thompson WM Jr, Dalton ML: **Ectopic thyroid.** *Ann Thorac Surg* 2003, **75**:1952–1953.
2. Bremerich J, Pippert H: **Ectopic thyroid tissue: an unusual differential diagnosis of space-occupying mediastinal lesions.** *Schweiz Med Wochenschr* 1997, **127**:266–270.
3. Barbetakis N, Chnaris A, Papoulidis P, Siobolas P, Kostopoulos G: **Ectopic mediastinal thyroid tissue—a case report and review of the literature.** *Hospital Chronicles* 2010, **5**:99–102.
4. Postlethwait RW, Detmer DE: **Ectopic thyroid nodule in the esophagus.** *Ann Thorac Surg* 1975, **19**:98–100.
5. Roh E, Hong ES, Ahn HY, Park SY, Yoon HI, Park KS, Park YJ: **A case of mediastinal ectopic thyroid presenting with a paratracheal mass.** *Korean J Intern Med* 2013, **28**:361–364.
6. Noussios G, Anagnostis P, Goulis DG, Lappas D, Natsis K: **Ectopic thyroid tissue anatomical clinical and surgical implications of a rare entity.** *Eur J Endocrinol* 2011, **165**:375–382.
7. Michalopoulos N, Papavramidis TS, Karayannopoulou G, Cheva A, Pliakos I, Triantafilopoulou K, Papavramidis ST: **Cervical thymic cysts in adults.** *Thyroid* 2011, **21**:987–992.
8. Chawla M, Kumar R, Malhotra A: **Dual ectopic thyroid: case series and review of the literature.** *Clin Nucl Med* 2007, **32**:1–5.
9. Grondin SC, Buenaventura P, Luketich JD: **Thoracoscopic resection of an ectopic intrathoracic goiter.** *Ann Thorac Surg* 2001, **71**:1697–1698.
10. Papavramidis TS, Michalopoulos N, Georgia K, Kesisoglou I, Valentini T, Georgia R, Papavramidis ST: **Retroperitoneal ganglioneuroma in an adult patient: a case report and literature review of the last decade.** *South Med J* 2009, **102**:1065–1067.
11. Shah BC, Ravichand CS, Juluri S, Agarwal A, Pramesh CS, Mistry RC: **Ectopic thyroid cancer.** *Ann Thorac Cardiovasc Surg* 2007, **13**:122–124.
12. Chen AY, Bernet VJ, Carty SE, Davies TF, Ganly I, Inabnet WB 3rd, Shaha AR: **American Thyroid Association statement on optimal surgical management of goiter.** *Thyroid* 2014, **24**:181–189.
13. Luketich JD, Grondin SC, Buenaventura P, Luketich JD: **Thoracoscopic resection of an ectopic intrathoracic goiter.** *Ann Thorac Surg* 2001, **71**:1697–1698.
14. Guimarães MJAC, Valente CMS, Santos L, Baganha MF: **Ectopic thyroid in the anterior mediastinum.** *J Bras Pneumol* 2009, **35**:383–387.

doi:10.1186/1752-1947-8-351

Cite this article as: Wang and Fang: Ectopic thyroid mass in the left lateral neck and anterior mediastinum: a case report. *Journal of Medical Case Reports* 2014 **8**:351.

Submit your next manuscript to BioMed Central and take full advantage of:

- Convenient online submission
- Thorough peer review
- No space constraints or color figure charges
- Immediate publication on acceptance
- Inclusion in PubMed, CAS, Scopus and Google Scholar
- Research which is freely available for redistribution

Submit your manuscript at
www.biomedcentral.com/submit

