

## RESEARCH ARTICLE

# *Spodoptera frugiperda* Smith (Lepidoptera: Noctuidae) in Cameroon: Case study on its distribution, damage, pesticide use, genetic differentiation and host plants

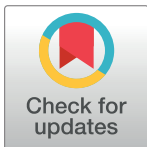
Apollin Fotso Kuate<sup>1</sup>\*, Rachid Hanna<sup>1</sup>, Armand R. P. Doumtsop Fotio<sup>2</sup>, Albert Fomumbod Abang<sup>1</sup>, Samuel Nanga Nanga<sup>1</sup>‡, Sergine Ngatat<sup>1</sup>‡, Maurice Tindo<sup>3</sup>‡, Cargele Masso<sup>1</sup>‡, Rose Ndemah<sup>1</sup>‡, Christopher Suh<sup>4</sup>‡, Komi Kouma Mokpokpo Fiaboe<sup>1</sup>‡

**1** International Institute of Tropical Agriculture (IITA), Yaoundé, Cameroon, **2** University of Maroua, Faculty of Science, Maroua, Cameroon, **3** University of Douala, Faculty of Science, Douala, Cameroon, **4** Institute of Agricultural Research for Development (IRAD), Yaoundé, Cameroon

\* These authors contributed equally to this work.

‡ These authors also contributed equally to this work.

\* a.fotso@cgiar.org



## OPEN ACCESS

**Citation:** Fotso Kuate A, Hanna R, Doumtsop Fotio ARP, Abang AF, Nanga SN, Ngatat S, et al. (2019) *Spodoptera frugiperda* Smith (Lepidoptera: Noctuidae) in Cameroon: Case study on its distribution, damage, pesticide use, genetic differentiation and host plants. PLoS ONE 14(4): e0215749. <https://doi.org/10.1371/journal.pone.0215749>

**Editor:** Juan Luis Jurat-Fuentes, University of Tennessee, UNITED STATES

**Received:** December 18, 2018

**Accepted:** April 8, 2019

**Published:** April 29, 2019

**Copyright:** © 2019 Fotso Kuate et al. This is an open access article distributed under the terms of the [Creative Commons Attribution License](https://creativecommons.org/licenses/by/4.0/), which permits unrestricted use, distribution, and reproduction in any medium, provided the original author and source are credited.

**Data Availability Statement:** All relevant data are within the manuscript and its Supporting Information files.

**Funding:** This work was supported by the Agricultural Investments and Market Development Project (PIDMA) jointly funded by the World Bank and the Cameroonian Government.

**Competing interests:** The authors have declared that no competing interests exist.

## Abstract

Maize farmers in sub-Saharan Africa recently experienced unusual damage in their farms, attributed to the fall armyworm (FAW) *Spodoptera frugiperda* (J. E. Smith). This pest was first recorded in Africa in 2016, but detailed information on its distribution and damage and farmer's response in invaded areas are largely lacking. In this study, we determined FAW distribution, genetic diversity, host plants, crop damage, and farmers' responses. *S. frugiperda* was recorded in the 10 regions of Cameroon. Average percentage of infested plants and damage severity (on a scale of 1 to 5) were lowest—20.7 ± 7.4% and 2.1 ± 0.1 respectively—in the Sahelian regions and greatest—69.0 ± 4.3% and 3.1 ± 0.1 respectively—in the Western Highlands. Altitude did not influence FAW incidence and severity and its larvae infrequently co-occurred with maize stemborers on the same plants, suggesting possible direct and/or indirect competition between the two groups of maize pests. In response to this new threat to maize production, farmers have opted for the application of synthetic pesticides. Although our experiments were not designed to determine pesticide efficacy, as parameters such as time since application were not considered, our observations suggest lack of a drastic effect on *S. frugiperda* infestations on maize. There were two haplotypes of FAW co-occurring in Cameroon corresponding to the rice and corn strains and separated by 1.7% sequence divergence, which does not support the existence of cryptic species. *S. frugiperda* larvae were also recorded on *Sorghum bicolor* (L.) Moench (10.6%), *Solanum tuberosum* L. (2.8%), *Ipomoea batatas* (L.) Lam. (1.9%), *Saccharum officinarum* L. (0.8%), *Phaseolus vulgaris* L. (0.4%) and *Gossypium hirsutum* L. (1.9%). This study shows that two strains are present in all agroecological zones in Cameroon, and probably in neighboring countries of central Africa sharing the same agroecologies. Management options should therefore consider the use of specific natural enemies and an informed decision of intervention based on strain capture and damage threshold, to avoid pesticide resistance that may

arise from inadequate use of chemicals. Further studies should also be undertaken to assess the response of the two *S. frugiperda* strains to biopesticides and botanical insecticides.

## Introduction

Maize (*Zea mays* L.) remains one of the most important crops in tropical areas and constitutes with wheat and rice, the main proportion of daily food intake of the inhabitants [1–3]. World maize production was estimated at 1,291 million tons in 2016 [4].

In Cameroon, maize provides almost half of the calories consumed in both rural and urban areas. It is largely grown in the west and northwest region of the country and has increasingly become a staple food in many parts of the country. Largest share of maize production is attributed to small-scale farmers and constitute a direct source for household livelihoods [5].

Maize production in Cameroon like in many other crops in sub-Saharan Africa are hampered by many biotic and abiotic factors, including poor soils, droughts, crop pests, diseases and weeds, and unsuitable temperatures [6–10]. A classification of the most important maize pests was given by [11] who identified several species of moths as the most damaging to maize worldwide. The group includes cutworms, armyworms, earworms, borers and grain moths and followed by the beetles (rootworms, wireworms, grubs, grain borers, and weevils). Other important groups of insects—thrips and sap-sucking bugs (leafhoppers and aphids) [11]—serve as vectors for disease agents (viruses, mycoplasmas, bacteria, and fungi).

*Busseola fusca* Fuller (Lepidoptera: Noctuidae) has been considered for long the most destructive lepidopteran pest of maize and sorghum in Africa [12–14]. Despite the huge amount of information about its management, this pest still represents a major constraint to maize production in areas where it is abundant. Yield losses due to *B. fusca* damage on maize varies between 14% in Kenya and 40% in monocropped maize fields in Cameroon [15,16].

The African armyworm (*Spodoptera exempta* Walker) is also known as a major pest of maize, sorghum, millet and rice, causing yield loss by defoliation [17]. Control during outbreaks are achieved through agricultural practices (planting time and timely weeding), biological control with *Spodoptera exempta* nucleopolyhedrovirus (SpexNPV) and chemical application with a wide range of pesticides, excluding all the chlorinated hydrocarbons such as DDT and BHC [17]. In addition to the damage caused by this native lepidopteran species on maize, farmers in sub-Saharan Africa recently experienced unusual damages in their farms caused by *Spodoptera frugiperda* (J. E. Smith). *S. frugiperda* is a Lepidopteran species of the Noctuidae family, whose caterpillars are crop pests. The caterpillar, which feeds on several plants, is known for its damage on various crops, including maize (*Zea mays* L.), sorghum (*Sorghum bicolor* (L.) Moench) and cotton (*Gossypium* sp. L.) [18].

Native to the Americas, *S. frugiperda* was first detected in Africa in 2016 [19]. It has been officially confirmed in over 44 countries in sub-Saharan Africa [18]. Infestations by *S. frugiperda* during the maize stages may result in yield losses of 15 to 73% when 55 to 100% of the plants are infested [20]. The larvae appear to be much more damaging to maize in West and Central Africa than most other African *Spodoptera* species [21].

Maize yield loss extrapolated from 12 African countries, based on studies in Ghana and Zambia, is estimated between 8.3–20.5 mil tons, worth between US\$2.5–6.2 billion [22]. Interventions based on pest incidence thresholds are primarily intended to better protect seedlings

and reproductive stages of maize. However, early detection is essential, as the application of chemical insecticides is effective only on young larval stages [18].

The presence of *S. frugiperda* was detected in maize farms in the west region of Cameroon, in December 2015 [23]. However, no quantitative data, nor the extent of its damage or its distribution is available for central Africa. Initial yield losses due to *S. frugiperda* in Cameroon is estimated between 0.3–0.8 mil tons, worth between US\$ 0.1–0.8 billion [22], with a 25 billion sector at risk per year, although these estimates are extrapolations from other areas in Africa. As a response to *S. frugiperda* invasion in Cameroon, a network of stakeholders, including government and research institutions, has developed a national strategic plan to address the *S. frugiperda* threat to Cameroon agriculture production. The information presented here consists of baseline studies, in the framework of the Cameroonian national plan, to identify *S. frugiperda* populations, improve understanding of their distribution, damage, and host plants, evaluate the perception of farmers and identify potential natural enemies. This information will be useful in designing an integrated control approach and could serve as example for other countries sharing similar agroecologies with Cameroon in Central Africa.

## Materials and methods

### Study sites

Three rounds of survey were conducted between February and March, May and June, October and November 2017 respectively in the ten regions of Cameroon (Fig 1). The regions are grouped into five agroecological zones namely the Soudano-sahelian zone (North and Far North regions), the High Guinea savannah (Adamawa region), the humid forest with bimodal rainfall (Center, South and East regions), the humid forest with Monomodal rainfall (Littoral and Southwest regions) and the western Highlands (West and Northwest regions). The first survey was done during the dry season during which maize is only grown in swamps. The two other survey periods corresponded to the usual maize cropping periods during the rainy season in the respective areas. The study was carried out on private land and the owner of the land gave permission to conduct the study in his farm. No specific permissions were required to conduct activities in these locations as per IITA host country agreement with the government of Cameroon. The field studies did not involve endangered or protected species as we worked in farmer's maize farms. A total of 420 fields were surveyed in 261 villages grouped in 61 locations. The number of fields sampled in each location was based on availability of maize fields at the time of sampling (Table 1).

### Sampling methods and data collection

In each region, one field was sampled per village. Two consecutive fields were separated by at least 20 km, unless constrained by the availability of fields. In each field, geographic coordinates (using hand held Garmin GPS) and other field information such as field size, surrounding and within field vegetation were recorded. The owner of the field was also interviewed using a short, structured questionnaire to obtain information about farm management practices such as planting date, variety, source of seeds, pesticides type and frequency, fertilizer type, type of recent change in infestation, first experience of damage increase. Participating farmers gave their oral consent before we proceeded, and the collected data was treated anonymously.

Each sample field was divided into four equal plots. In each plot, scouting was done by inspecting 10 plants, moving along a W-shape design. The middle of the field was also sampled, making 50 plants surveyed per field. Distance between two consecutive plants was a function of field size and shape but was representative of the plot area [18].



Table 1. Number of fields sampled during the three surveys.

Regions	Survey #1	Survey #2	Survey #3	Total
Adamawa	4	5	2	11
Center, East and South	53	52	68	173
North and Far North	-	13	51	64
Littoral and Southwest	19	20	26	65
West and Northwest	31	35	41	107
Total	107	125	188	420

<https://doi.org/10.1371/journal.pone.0215749.t001>

*Spodoptera frugiperda* presence was determined using the following indicators: (i) presence of fresh frass in the leaf funnel; (ii) presence of larvae on leaves or in the leaf funnel identifiable with the inverted Y-Shape in the head and the set of four dot forming a square on the upper surface of the last segment of its body [18]; (iii) irregular damage (cuts) on leaves and (iv) presence of egg masses. Other plants known to be *S. frugiperda* hosts were also inspected [22,24].

The co-occurrence of maize stemborer larvae (e.g., *Busseola fusca* Fuller) and *S. frugiperda* on the same plants was also recorded to evaluate possible competitive interactions between the two pests.

Field sampling was destructive; the inspected plants were cut from the ground level and dissected to record the number of *S. frugiperda*, stemborers, egg batches and any other insects present. Damage to the plant was also scored by evaluating severity of pin holes, shot-holes, lesions, tattering and dead hearts. A rating scale from 1 to 5 was used for scoring of damage severity on whorl-stage plants as follows:

1. Healthy maize without damage;
2. 1–10% leaf damage or presence of damage from fall armyworm limited to characteristic windows or < 5 mm diameter and or destruction of only the leaf cuticle;
3. 11–25% leaf damage with presence of chewed areas > 5 mm, funnel leaves still intact;
4. 26–50% leaf damage with presence chewed areas larger than 1 cm, the funnel slightly damaged or less severe;
5. > 50% leaf damage, plant stunting and funnel damaged severely [25,26].

All larvae for genetic studies were kept in 90%-alcohol and brought to the laboratory. Another batch of larvae was used to establish FAW colonies in the laboratory.

### Molecular characterization of *S. frugiperda* populations

**DNA extraction, amplification and sequencing.** To determine the genetic diversity of *S. frugiperda* populations in Cameroon, DNA sequence data for mitochondrial Cytochrome c oxidase subunit 1 (COI), encoding gene commonly used for 'DNA barcode' [27], were obtained from 95 specimens collected from 27 locations across the country during the surveys and kept in 95% ethanol. The collection included 71 specimens of the fall armyworm and 24 specimens of other stemborers. All specimens examined were larvae collected from maize. DNA extraction and amplification was done at the molecular laboratory facilities of the International Institute of Tropical Agriculture (IITA, Yaoundé Nkolbisson, Cameroon). A fragment of each specimen was cut from the caudal end of the worm body and put in individual Eppendorf tubes. DNA was extracted following the manufacturer's insect specific protocol for the DNEasy Blood and Tissue kit (P/N 69506; QIAGEN, GmbH) [28–30]. After extraction, DNA was stored at -20 °C for pending use. Two microliters (2 µl) of the extracted DNA were

used as a template in 25  $\mu$ l final volume of PCR reactions. The primer pairs LepF (5' -ATTCAACCAATCATAAAGATATTGG-3') and LepR (5' -TAAACTTCTGGATGTCCAAAAAATCA-3') were used to amplify an approximately 700 bp DNA fragment of mitochondrial COI. The thermocycling profile consisted of: initial denaturation at 94°C for 1.5 min, followed by 35 cycles of (denaturing at 95°C for 30s, annealing at 55°C for 1 min and elongation at 72°C for 1.5 min), final elongation took place at 72°C for 7min and a final lap at 4°C [31]. Five microliters (5  $\mu$ l) of the amplified DNA were visualized on 2% agarose gel and 20  $\mu$ l of the amplified product was shipped to Inqaba Biotec South Africa for sequencing. Amplified DNA was subsequently purified and sequenced in both directions using the same primers, yielding a 658-base pair "barcode".

## Data analysis

*Spodoptera frugiperda* incidence and severity values were obtained for each of the surveyed maize fields. Incidence was calculated as the percentage of plants infested by *S. frugiperda* while damage score was calculated by dividing the sum of score (excluding score 1 –absence of *S. frugiperda*) by the number of plants damaged. We used the spearman correlation to evaluate the effect of altitude and field age, on *S. frugiperda* damage and severity. We used nested ANOVA to compare *S. frugiperda* incidence and severity between regions and seasons while considering location as random factor nested in regions, and regions and seasons as fixed factors. We used in the ANOVA log-transformed average incidence and severity per village to reduce heteroscedasticity inherent in our type of data [32].

**Phylogenetic analyses.** Raw sequences were trimmed in Chromas (version 2.6.2) by removing primer regions from both the forward and reverse strands. Forward and reverse sequences were assembled, and consensus sequences were created in BioEdit 7.0.9.0 [33]. All consensus sequences resulted in exactly 658 bp perfectly aligned. To further confirm the species identity, specimens were analyzed by 'DNA barcoding'. The DNA sequence of each specimen was blast using BLASTn on the NCBI GenBank database and the data coverage and identity percentage were noted. To ensure sequences quality, DNA sequences were translated into proteins by assigning the invertebrate mitochondrial genetic code and setting a 3, 1, 2 codon position using Mesquite (version 3.5), which resulted in protein sequences with no gaps and no stop codons. The DNA sequence dataset was completed with some *S. frugiperda* COI sequences from previous studies [19,34,35], retrieved from the NCBI GenBank database. Multiple sequence alignments for the sequence data were then generated in MAFFT [36]. Pairwise genetic distances were assessed for the Cameroon populations of *S. frugiperda* and the dataset was subjected to neighbor joining (NJ), maximum parsimony (MP) and Maximum likelihood (ML) tests using MEGA 7.0.21. Prior to the tests, the best-fit substitution model was determined using the highest Akaike (AIC) and Bayesian (BIC) Information Criterion. Since sequences retrieved from GenBank were of shorter length, their alignment with sequences obtained in this study lead to the creation of gaps at the 3' end. These gaps were treated in the analysis as missing data. Neighbor-Joining (NJ) analysis was carried based on p-distances and a pairwise deletion option for gaps treatment. For Maximum Parsimony (MP) analysis, phylogenetic trees were constructed using heuristic searches with a bootstrap method (1,000 replicates) and Subtree-Pruning-Regrafting (SPR) branch swapping. Phylogenetic reconstruction using maximum likelihood was performed with a bootstrap method (1,000 replicates) and a nearest-neighbor-interchange heuristic search method. *Spodoptera littoralis* Boisduval was used as outgroup in the subset of *S. frugiperda* populations while *Eldana saccharina* Walker was used as outgroup in the analysis of the whole dataset including other stemborers.

## Results

### Distribution and damage severity of the *S. frugiperda* in Cameroon

*S. frugiperda* presence was recorded in all 10 regions of Cameroon, with incidence ranging from  $22.9 \pm 5.7\%$  in the Far North region recorded during the second survey, to  $79.2 \pm 3.4\%$  in the West region during the third survey. Damage severity ranged from  $2.15 \pm 0.08\%$  in the Far North region recorded during the second survey, to  $3.64 \pm 0.10\%$  in the Littoral region during the second survey. Average larva count ranged from  $6.33 \pm 1.51$  to  $19.78 \pm 3.03$  in untreated plots while it was between  $4.43 \pm 1.73$  to  $29.0 \pm 2.70$  in treated plots. Greater number of larvae per field were recorded in the West region ( $20.1 \pm 2.30$ ) followed by the East ( $15.9 \pm 2.45$ ) and the Northwest ( $15.3 \pm 2.14$ ). The lowest number of larvae was recorded in the Far north region ( $6.59 \pm 1.39$ ) (Table 2).

Mean incidence was significantly greater during the first and the third survey ( $58.4 \pm 4.5\%$  and  $60.7 \pm 4.6\%$  respectively) compared with the second survey ( $40.6 \pm 3.3\%$ ). However, mean severity during the second survey ( $3.06 \pm 0.14$ ) was greater compared with the first and the third survey ( $2.70 \pm 0.11$  and  $2.72 \pm 0.09$  respectively) (Table 3).

There was a positive and significant correlation between *S. frugiperda* incidence and damage severity ( $r = 0.21$ ,  $n = 416$ ,  $P < 0.0001$ ); and a negative correlation between incidence the *S. frugiperda* and the age of the plants ( $r = -0.13$ ,  $n = 420$ ,  $P < 0.01$ ) (S1 Fig).

### Characteristics of the fields and pesticide use by farmers

Maize field size ranged from 0.02 to 1.7 ha (mean  $\pm$  SE:  $0.18 \pm 0.02$  ha) while maize plants age ranged from 12 and 88 days (mean  $\pm$  SE:  $58.5 \pm 1.3$  days). About 87% of the plant sampled were at the early whorl stage (VE-V6), while 13% was at the late whorl stage to silking (V7-R3).

Twenty-six percent of the respondents treated their field with pesticides in response to *S. frugiperda* infestations. We recorded 3,706 larvae of all stages in untreated plots ( $n = 294$  fields) and 1,832 larvae of all stages in treated plots ( $n = 126$  fields). The difference between treated and untreated plots was not significant ( $F_{(1, 418)} = 1.95$ ,  $P = 0.16$ ). Emamectin benzoate was the most common active ingredient mentioned by farmers (16%), followed by Cypermethrin (15%) and Lamdacyhalothrin (10%). Only one farmer said to have used wood ash initially and a synthetic chemical afterwards. Twelve percent of the farmers did not recall the name of the pesticides used (Fig 2).

Table 2. Mean  $\pm$  SE of *S. frugiperda* incidence and severity in the various regions averaged between fields.

Region	Mean Incidence (% of infested plant)			Mean severity (on a scale of 1 to 5)			Average FAW larvae count		
	Survey #1	Survey #2	Survey #3	Survey #1	Survey #2	Survey #3	Untreated plot	Treated plot	Combined
Adamawa	41.5 $\pm$ 4.1	34.0 $\pm$ 16.5	60.0 $\pm$ 4.0	2.29 $\pm$ 0.10	3.27 $\pm$ 0.20	3.02 $\pm$ 0.12	9.36 $\pm$ 4.97	-	9.36 $\pm$ 4.97
Centre	71.4 $\pm$ 4.2	29.2 $\pm$ 6.2	54.4 $\pm$ 4.2	2.61 $\pm$ 0.09	2.91 $\pm$ 0.14	2.95 $\pm$ 0.08	11.1 $\pm$ 1.98	15.0 $\pm$ 3.18	12.1 $\pm$ 1.68
East	64.7 $\pm$ 8.4	37.6 $\pm$ 10.2	60.7 $\pm$ 5.4	2.46 $\pm$ 0.10	3.10 $\pm$ 0.22	3.13 $\pm$ 0.07	15.2 $\pm$ 2.33	29.0 $\pm$ 2.70	15.9 $\pm$ 2.45
Far North	NA	22.9 $\pm$ 5.7	37.4 $\pm$ 4.0	NA	2.15 $\pm$ 0.08	2.29 $\pm$ 0.04	7.20 $\pm$ 1.71	4.43 $\pm$ 1.73	6.59 $\pm$ 1.39
Littoral	40.4 $\pm$ 15.4	54.0 $\pm$ 10.4	69.7 $\pm$ 4.7	2.72 $\pm$ 0.21	3.64 $\pm$ 0.10	2.58 $\pm$ 0.09	10.9 $\pm$ 2.22	5.57 $\pm$ 3.88	9.18 $\pm$ 1.97
North	NA	50.7 $\pm$ 12.3	40.2 $\pm$ 4.3	NA	2.42 $\pm$ 0.13	2.34 $\pm$ 0.05	6.33 $\pm$ 1.51	7.00 $\pm$ 1.93	6.75 $\pm$ 1.31
Northwest	51.9 $\pm$ 4.8	44.7 $\pm$ 4.6	74.8 $\pm$ 3.7	2.96 $\pm$ 0.09	3.51 $\pm$ 0.13	2.83 $\pm$ 0.07	13.2 $\pm$ 2.45	19.7 $\pm$ 4.13	15.3 $\pm$ 2.14
South	73.4 $\pm$ 3.7	40.4 $\pm$ 4.8	55.2 $\pm$ 4.7	2.42 $\pm$ 0.06	3.00 $\pm$ 0.09	2.60 $\pm$ 0.04	11.7 $\pm$ 1.82	13.6 $\pm$ 2.92	12.1 $\pm$ 1.55
Southwest	58.7 $\pm$ 6.4	38.5 $\pm$ 3.8	75.4 $\pm$ 5.8	2.93 $\pm$ 0.12	3.28 $\pm$ 0.14	2.72 $\pm$ 0.08	12.7 $\pm$ 1.67	17.1 $\pm$ 2.65	14.9 $\pm$ 1.59
West	65.6 $\pm$ 4.6	54.0 $\pm$ 5.0	79.2 $\pm$ 3.4	3.23 $\pm$ 0.11	3.29 $\pm$ 0.12	2.76 $\pm$ 0.08	19.8 $\pm$ 3.03	20.6 $\pm$ 3.58	20.1 $\pm$ 2.3
Average	58.4 $\pm$ 4.5	40.6 $\pm$ 3.3	60.7 $\pm$ 4.6	2.70 $\pm$ 0.11	3.06 $\pm$ 0.14	2.72 $\pm$ 0.09	12.6 $\pm$ 0.08	14.5 $\pm$ 1.25	13.2 $\pm$ 0.67

(NA = not available)

<https://doi.org/10.1371/journal.pone.0215749.t002>

Table 3. Mixed model analysis of *Spodoptera frugiperda* incidence and severity between regions, seasons and locations.

Y	Source	SS	MS Num	DF Num	F Ratio	Prob > F
Mean Severity	Survey	7.91	3.96	2	25.07	<0.0001
	Region[Location]	1.23	0.62	2	3.91	0.02
	Location&Random	27.07	0.45	60	2.86	<0.0001
Mean Incidence	Survey	30237.2	15118.6	2	36.11	<0.0001
	Region[Location]	606.70	303.35	2	0.72	0.49
	Location&Random	44571.4	742.86	60	1.77	<0.0001

<https://doi.org/10.1371/journal.pone.0215749.t003>

Pesticides were applied at a frequency varying from twice a week (9%) to once during the crop cycle (15%) (Fig 3). Pesticide use did not reduce *S. frugiperda* damage incidence (treated fields: 55.9 ± 7.6%; untreated fields: 50.8 ± 4.3%, t = 1.98, P = 0.05) or severity (treated fields: 2.84 ± 0.08; untreated fields: 2.86 ± 0.08, t = 1.27, P = 0.20).

### Identification of *S. frugiperda* strains

The ninety five specimens used in this study were medium to large size larvae and were presented by S1\_FAW—S95 FAW (S1 Table) and grouped into *S. frugiperda* samples (72 specimen) and stemborer samples as outer group (23 specimen). They were accessioned in the Laboratory of Entomology of IITA Cameroon. Based on the BLASTn analyses of the 658 bp COI sequence data on the NCBI GenBank database, the specimens were identified as *Spodoptera frugiperda* Smith (98.6%) and *Spodoptera litura* Fabricius (1.6%). This identification is supported by 98 to 100% similarity in sequence data and coverage (S1 Table).

### Genetic distance of *S. frugiperda* populations

Based on the genetic distances, *S. frugiperda* specimens fell into two discrete haplotype groups (see the phylogenetic tree). All sequences in each group are completely identical (null genetic

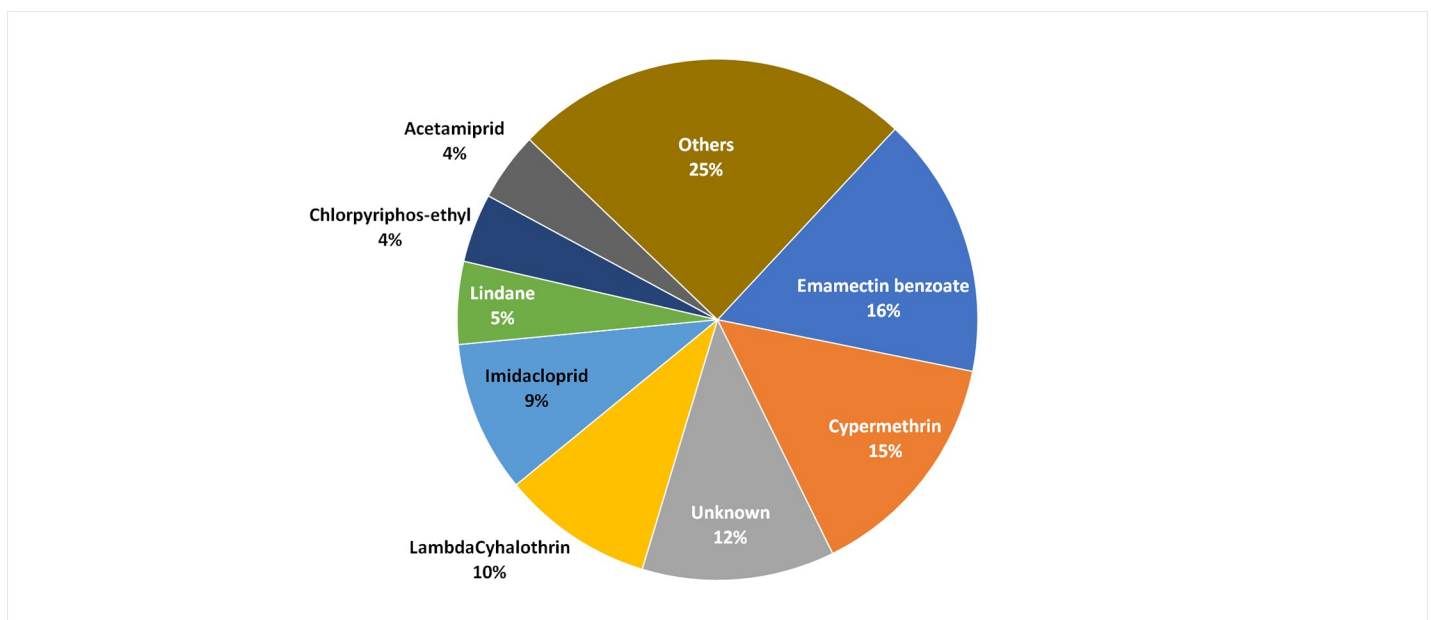


Fig 2. Active ingredients used by farmers to control *S. frugiperda* infestation on maize.

<https://doi.org/10.1371/journal.pone.0215749.g002>



	1	70
FAW Consensus sequence	AACATTATATTTTATTTTGGAAATTTGAGCAGGRATAGTAGGTACTTCTTTAAGTTTATTAATTCGAGCT	
FAW Haplotype 2 (corn race)	.....G.....	
FAW Haplotype 1 (rice race)	.....A.....	
	71	140
FAW Consensus sequence	GAATTAGGRACCTCCAGGATCTTTAATTGGAGATGATCAAATTTATAACTATTGTAACAGCYCATGCTT	
FAW Haplotype 2 (corn race)	.....G.....T.....	
FAW Haplotype 1 (rice race)	.....A.....C.....	
	141	210
FAW Consensus sequence	TTATTATAATTTTTTTATAGTTATACCWATTATAAATTGGAGGATTTGGAAATTGACTTGTACCTTTAAT	
FAW Haplotype 2 (corn race)	.....T.....	
FAW Haplotype 1 (rice race)	.....A.....	
	211	280
FAW Consensus sequence	ATTAGGAGCYCCTGATATAGCTTTCCACGTATAAATAATATAAGTTTTTGACTTTTACCCCATCTTTA	
FAW Haplotype 2 (corn race)	.....C.....	
FAW Haplotype 1 (rice race)	.....T.....	
	281	350
FAW Consensus sequence	ACTTTATTAATTTCTAGTAGCATTGTAGAAAATGGAGCAGGAAGTGGATGAACAGTTTACCCCCCTCT	
FAW Haplotype 2 (corn race)	.....	
FAW Haplotype 1 (rice race)	.....	
	351	420
FAW Consensus sequence	CCTCTAATATTGCTCATGGTGGTAGTTCAGTAGATTTAGCTATTTTCTCACTTCATTTAGCTGGAATTC	
FAW Haplotype 2 (corn race)	.....	
FAW Haplotype 1 (rice race)	.....	
	421	490
FAW Consensus sequence	ATCTATTTTAGGAGCTATTAACCTTTATTACYACTATTATTAATATACGATTAAATAATTTATCATTGAT	
FAW Haplotype 2 (corn race)	.....T.....	
FAW Haplotype 1 (rice race)	.....C.....	
	491	560
FAW Consensus sequence	CAAATACCTTTATTTATTTGAGCTGTAGGTATTACYGCATTYTTATTATTATTATCTTTACCTGTTTTAG	
FAW Haplotype 2 (corn race)	.....T.....C.....	
FAW Haplotype 1 (rice race)	.....C.....T.....	
	561	630
FAW Consensus sequence	CYGGAGCTATTACTATATTACTTACTGATCGAAATYTAATAACATCATTTTTCGATCCTGCAGGWWGAGG	
FAW Haplotype 2 (corn race)	.C.....T.....T.....	
FAW Haplotype 1 (rice race)	.T.....C.....A.....	
	631	658
FAW Consensus sequence	TGATCCTATTCTTTATCAACATTTATTT	
FAW Haplotype 2 (corn race)	.....	
FAW Haplotype 1 (rice race)	.....	

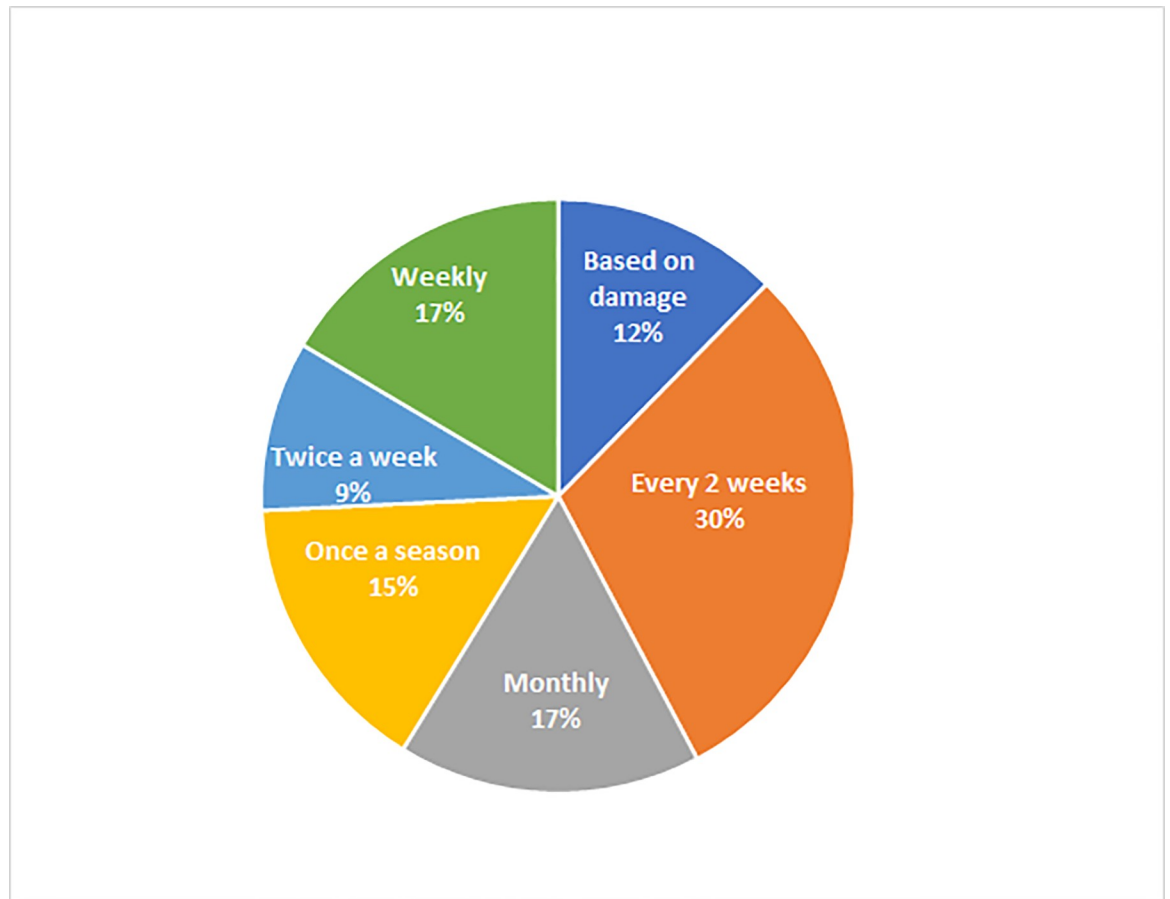
Fig 3. Pesticide application frequency to control *S. frugiperda* on maize by farmers.

<https://doi.org/10.1371/journal.pone.0215749.g003>

distance) while the two groups differed by 1.7% sequence divergence resulting from 11 nucleotide base substitutions (Fig 4). However, there was not any change of amino acids in the resulting 219 amino acids protein sequence of the two haplotypes (S2 Fig).

### Phylogenetic relationship of *S. frugiperda* populations

The best-fit substitution model determined by the AIC and BIC was the Jukes-Cantor model. Fall armyworm collections from Cameroon resolved into two distinct clades with no sequence variation within clades (Fig 5). Forty-five specimens out of 71 grouped into the first clade (haplotype 1) including specimens from Brazil, Costa-Rica, Tanzania, Nigeria and especially the



**Fig 4. Identity plot of the COI sequences of *S. frugiperda* haplotypes from Cameroon.**

<https://doi.org/10.1371/journal.pone.0215749.g004>

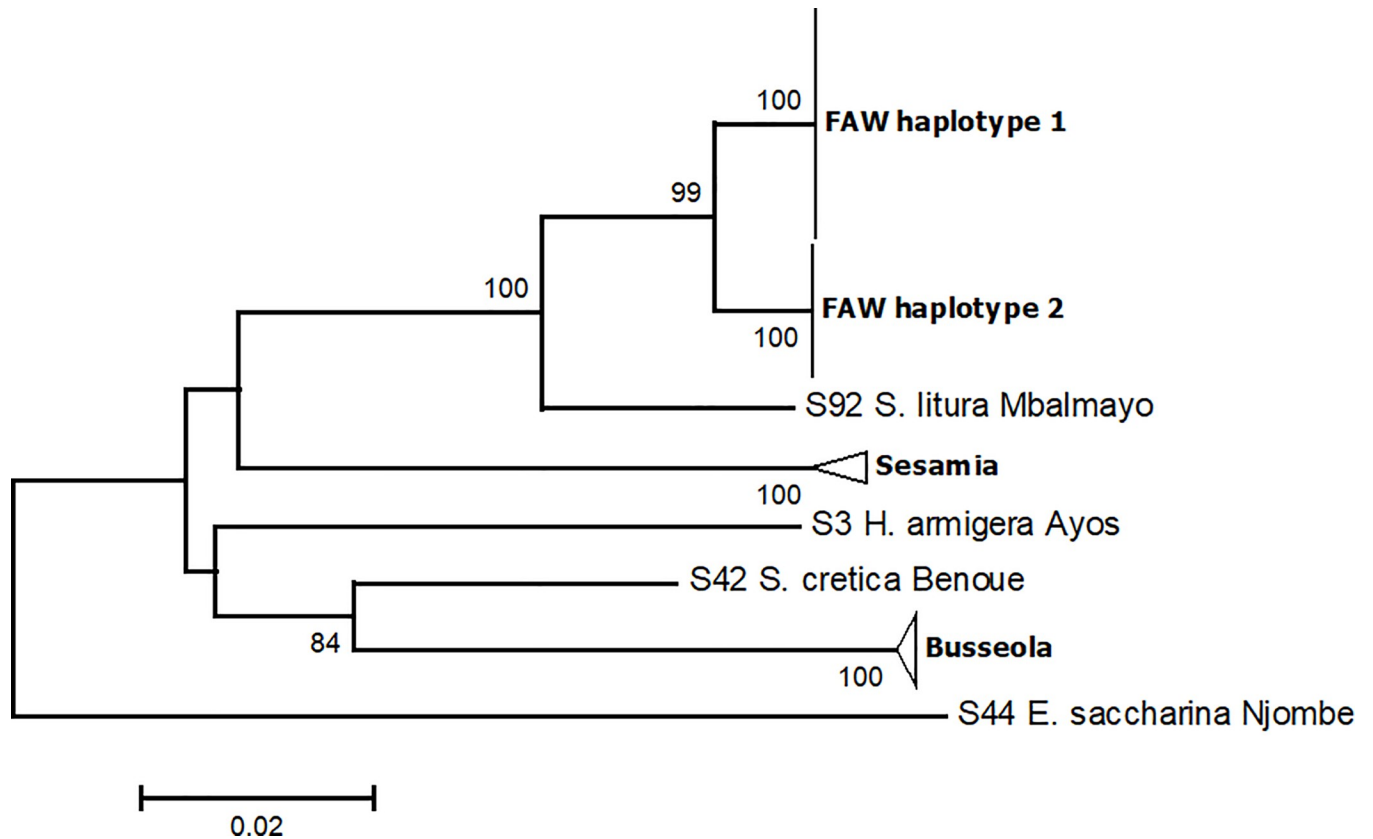
“rice” strain from the USA, while the 26 other specimens grouped into the second clade (haplotype 2) with specimens from Sao-Tome and especially the “corn” strain from the USA. The same clusters were well supported by MP and ML analyses (S3 and S4 Figs respectively). The relationship with other stemborers is also provided (S5 Fig).

### Distribution of haplotypes in surveyed agroecologies

Specimens examined in this study were from 27 localities (out of 61) spread over various agroecologies (Table 4) in Cameroon. The two identified haplotypes occurred in all agroecologies across Cameroon. Both haplotypes were found together in 48.2% of the surveyed fields, and alone in 37% and 14.8% of the surveyed fields respectively for haplotype 1 (rice strain) and haplotype 2 (corn strain). Corn strain specimens were found in mixed infestation areas (65.4%,  $n = 26$ ) while rice strain specimens occurred in about the same relative frequency alone (48.9%,  $n = 45$ ) or in mixed infestation (51.1%,  $n = 51$ ).

### Co-occurrence of *S. frugiperda* and *Busseola fusca*

*Spodoptera frugiperda* and *B. fusca* larvae co-occurred only on 5% of the plants sampled, but in many cases, only *S. frugiperda* larvae were recorded on the maize plant (77.6%). *Busseola fusca* occurred alone on 17.4% of the plants (Fig 6).



**Fig 5. Phylogenetic relationship of 71 samples of the fall armyworm *Spodoptera frugiperda* populations from Cameroon, inferred from the 658 bp mitochondrial cytochrome c oxidase subunit 1 (COI) using Neighbor Joining method based on p-distances; scale unit is the number of base differences per site. The percentage of replicate trees in which the associated taxa clustered together in the bootstrap test (1000 replicates) are shown next to the branches. Evolutionary analyses were conducted in MEGA7.**

<https://doi.org/10.1371/journal.pone.0215749.g005>

### Influence of altitude on *S. frugiperda* severity

There was no significant association between altitude on *S. frugiperda* severity as damage levels were spread nearly equally across all altitudes (Fig 7).

### Host plants

Apart from maize, thirty-one potential host plant species were inspected during the three surveys. *Spodoptera frugiperda* larvae were recorded on six of these 31 plant species: *Sorghum bicolor* (L.) Moench (10.6%; n = 1300), *Solanum tuberosum* L. (2.8%; n = 36), *Ipomoea batatas* (L.) Lam. (1.9%; n = 107), *Saccharum officinarum* L. (0.8%; n = 120), *Phaseolus vulgaris* L. (0.4%; n = 530) and *Gossypium hirsutum* L. (1.9%; n = 1250). (S2 Table)

**Table 4. Occurrence of the Fall armyworm *Spodoptera frugiperda* haplotypes in different agroecological zones in Cameroon.**

Agroecology (number of surveyed localities)	Sampled specimens	Haplotype 1 (rice strain)		Haplotype 2 (corn strain)	
		n	%	n	%
Humid forest bimodal rainfall (12)	31	17	54.8	14	45.2
Moist savannah highlands (7)	20	16	80.0	4	20.0
Dry savannah (3)	5	4	80.0	1	20.0
Humid forest monomodal rainfall (5)	15	8	53.3	7	46.7

<https://doi.org/10.1371/journal.pone.0215749.t004>

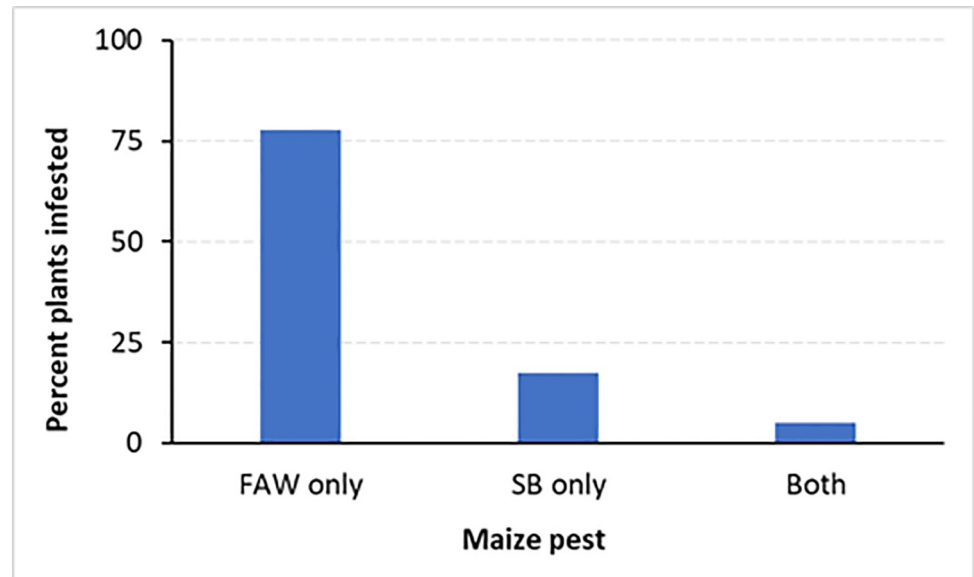


Fig 6. Co-occurrence of *Spodoptera frugiperda* and *Busseola fusca* on maize plants.

<https://doi.org/10.1371/journal.pone.0215749.g006>

## Discussion

This study has provided insight in the *S. frugiperda* spread, diversity and farmer's reaction in Cameroon, and possibly similar agroecologies in central Africa since the report of its invasion in 2016. In response to this new threat to maize production, farmers have opted for the application of synthetic pesticides. Although our experiments were not designed to determine pesticide efficacy, as parameters such as time since application were not considered, our observations suggest lack of a drastic effect on *S. frugiperda* infestations on maize. Many farmers do not apply the recommended doses or as indicated [37], and in some cases, they use a combination of several insecticides, making it difficult to evaluate their effects. The misuse or overuse of the same pesticide have been cited as major cause of insect resistance to pesticides

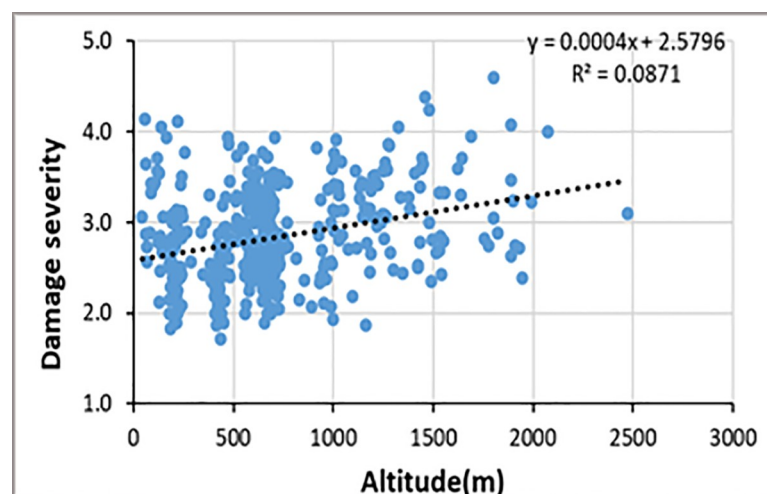


Fig 7. *S. frugiperda* severity vs altitude in maize fields in Cameroon.

<https://doi.org/10.1371/journal.pone.0215749.g007>

[38]. In the Americas, resistance to pesticides has been reported for several mode-of-action categories including Carbamates, Organophosphates and Pyrethroids [39,40]. To avoid the occurrence of resistance to pesticides in Africa, farmers should be advised on the proper use of insecticides, includes rates, timing and methods of application. Management of fall armyworm that consider the use of natural enemies and an informed decision of intervention based of moth capture and damage threshold is necessary to avoid resistance that may arise from inappropriate insecticide use [41–43].

There was a variation in incidence and severity among the regions, with a decreasing trend from the humid forest zone towards the Sahelian zone. These observed differences are probably related to haplotype distribution between the regions as shown by the genetics analyses.

Incidence and severity also varied between sampling periods. In bimodal rainfall zones, there seems to be population build up during the first planting season characterized by more growing fields, which also experience severe attack, resulting in greater incidence during the second and the off-season. We could have expected severe attack during the first survey (off-season), due to the reduction maize field size, which are concentrated around swampy areas in association with vegetables, but it was not the case.

At the field level, there was a positive correlation between incidence and severity. Larvae are known to disperse between plants from the egg mass after hatching [44]. Severe damage could result from initial feeding from several larvae or mixed infestation with stemborers. However, at later developmental stages (5<sup>th</sup> and 6<sup>th</sup> instar), only one larva was frequently observed per plant and there were few cases of co-occurrence between with stemborers.

Populations of *S. frugiperda* Cameroon are grouped into two distinct clades that clustered perfectly with the R (rice) and the M (corn) biotypes provided by [45]. This provide evidence of the co-occurrence of both strains of *S. frugiperda* in Cameroon, in contrast to Nigeria, Sao-Tome and Tanzania where only one of the strain was recorded [19,34]. The two strains were recently shown to co-occur also in South Africa [35]. Previous studies in the Americas and in South Africa also showed that both corn and rice types can occur on maize and other crops [35, 46].

While some authors considered the genetic variation between the two *S. frugiperda* strains as an intraspecific variation probably due to different introduction events [19], others suggested that the two strains were introduced together over a short period and that the two observed clades represent cryptic species [35]. Although there are considerable data on pheromone composition, different responses in male attraction to pheromones and existence of a pre-mating isolation barrier to support the existence of cryptic species [30,47–49], these differences have been attributed also to geographic differentiation between *S. frugiperda* populations and not necessarily strain specific differences [50]. In our DNA barcoding of *S. frugiperda* in Cameroon, we found 1.7% sequence divergence between the two *S. frugiperda* strains, which is greater than the 1% reported by [34], but it is still below the 2% usually recorded for confirmed congeneric species [51–53]. Intraspecific variation in the South African populations of *S. frugiperda* have been also reported, but this variation has not been quantified [35]. While our data is suggestive of the existence of two cryptic species in the *S. frugiperda* group in Cameroon, a larger sample is however needed to explore this diversity and to make a definitive conclusion on the existence of cryptic species in Cameroon.

From our samples, we could not make inference on the distribution and abundance of the strains in the agroecologies given the limited number of sample used, especially in the savannah. However uncovering the distribution and abundance of the two strains using larger sample will add knowledge in finding solutions against this new pest of maize in west and central Africa.

*Spodoptera frugiperda* larvae were also recorded on other crops. The species is known to infest over a hundred of plant species, with grasses being the preferred host [24]. This could justify why sorghum was the most infested crop after maize.

While insecticides are likely to remain the first line of defense against *S. frugiperda* in Africa, host specific and generalist natural enemies are also potential options to complements the use of selective synthetic chemical by farmers in an integrated approach to the control of *S. frugiperda*. At present, potential natural enemies like spiders, eggs parasitoids from the family Trichogrammatidae, laval parasitoids from various families (Tachinidae, Phoridae, Braconidae and Ichneumonidae) which were encountered at low density during our surveys do not appear to be effective in controlling *S. frugiperda* infestations. Further studies the bioecology of these natural enemies are needed to determine their role in limiting *S. frugiperda* populations [39,54–56]. Moreover, there is an urgent need to test available biopesticides and botanical insecticides to supplement available options for the control of *S. frugiperda* and reduce losses in the production of maize and other affected crops. Biopesticides and botanicals also provide a low risk alternative to conventional, synthetic pesticides, providing it is supported by a number of rigorously data collection on their efficacy at different maize growth stages and with different *S. frugiperda* life stages [57,58]

## Conclusion

*S. frugiperda* is present in all regions of Cameroon with two distinct clades that clustered perfectly with the rice and corn strains. Management option should therefore consider the use of more specific natural enemies and an informed decision of intervention based on strain capture and damage threshold, to avoid pesticide resistance that may arise from inadequate use of chemicals. Our observations suggest lack of a drastic effect of pesticide on *S. frugiperda* infestations on maize. Current efforts are focusing on identifying potential indigenous natural enemies and screening soft insecticides and biopesticide as part of an integrated control of the pest.

## Supporting information

**S1 Table. List of Cameroon Fall armyworm and other stemborer specimens collected from maize plants.**

(PDF)

**S2 Table. List of FAW host plants other than maize surveyed.**

(PDF)

**S1 Fig. *S. frugiperda* Incidence vs plant age in maize fields in Cameroon.**

(PDF)

**S2 Fig. Protein sequence from the COI gene of *S. frugiperda* from Cameroon.**

(PDF)

**S3 Fig. Phylogenetic relationship of 71 samples of the Fall armyworm *Spodoptera frugiperda* populations from Cameroon.** Inferred from the 658 bp mitochondrial cytochrome c oxidase subunit 1 (COI) using Maximum Parsimony method based on the Jukes-Cantor model; The consensus tree inferred from 10 most parsimonious trees is shown. Branches corresponding to partitions reproduced in less than 50% trees are collapsed. The consistency index is 1, the retention index is 1.000000, and the composite index is 1 for all sites and parsimony-informative sites. The percentage of parsimonious trees in which the associated taxa clustered together are

shown next to the branches. Evolutionary analyses were conducted in MEGA7. (PDF)

**S4 Fig. Phylogenetic relationship of 71 samples of the Fall armyworm *Spodoptera frugiperda* populations from Cameroon.** Inferred from the 658 bp mitochondrial cytochrome c oxidase subunit 1 (COI) using Maximum Likelihood method based on the Jukes-Cantor model; The topology of the tree with the highest log likelihood (-1131.5259) is shown). The tree is drawn to scale, with branch lengths measured in the number of substitutions per site. The percentage of replicate trees in which the associated taxa clustered together in the bootstrap test (1000 replicates) is shown next to the branches. Initial tree(s) for the heuristic search were obtained automatically by applying the Maximum Parsimony method. Evolutionary analyses were conducted in MEGA7. (PDF)

**S5 Fig. Phylogenetic relationship of 71 samples of the Fall armyworm *Spodoptera frugiperda* and 24 samples of other stemborer populations from Cameroon.** Inferred from the 658 bp mitochondrial cytochrome c oxidase subunit 1 (COI) using Neighbor-Joining method based on p-distances; The optimal tree with the sum of branch length = 0.36286936 is shown. The percentage of replicate trees in which the associated taxa clustered together in the bootstrap test (1000 replicates) are shown next to the branches. Scale unit is in the number of base differences per site. Evolutionary analyses were conducted in MEGA7. (PDF)

## Acknowledgments

The authors would like to thank the reviewers for all of their careful, constructive and insightful comments in relation to this work.

## Author Contributions

**Conceptualization:** Rachid Hanna, Albert Fomumbod Abang.

**Formal analysis:** Armand R. P. Doumtsop Fotio, Sergine Ngatat.

**Investigation:** Apollin Fotso Kuate, Albert Fomumbod Abang, Samuel Nanga Nanga, Christopher Suh.

**Methodology:** Rachid Hanna, Albert Fomumbod Abang, Maurice Tindo, Rose Ndemah.

**Supervision:** Cargele Masso.

**Visualization:** Armand R. P. Doumtsop Fotio.

**Writing – original draft:** Apollin Fotso Kuate.

**Writing – review & editing:** Maurice Tindo, Komi Kouma Mokpokpo Fiaboe.

## References

1. Brewbaker JL. Corn production in the tropics: the Hawaii experience [Internet]. Manoa; 2003. Available: [www.ctahr.hawaii.edu](http://www.ctahr.hawaii.edu).
2. Akanvou L, Akanvou R, Koffi C, Saraka D. Evaluation agronomique des variétés de maïs riches en protéines de qualité (MRP) en station et en milieu paysan dans la zone forestière de côte d'ivoire. *Agron Africaine*. 2009; 21: 309–317. Available: file:///C:/Users/IITACA-IT/Downloads/56461-96229-1-PB.pdf.
3. Badu-Apraku B, Fakorede MAB. Maize in Sub-Saharan Africa: Importance and Production Constraints. *Advances in Genetic Enhancement of Early and Extra-Early Maize for Sub-Saharan Africa*. Cham: Springer International Publishing; 2017. pp. 3–10. [https://doi.org/10.1007/978-3-319-64852-1\\_1](https://doi.org/10.1007/978-3-319-64852-1_1)

4. FAO. Food and agriculture data [Internet]. 2018 [cited 27 Feb 2018]. Available: <http://www.fao.org/faostat/en/#home>.
5. Ngoko Z, Cardwell KF, Marasas WFO, Wingfield MJ, Ndemah R, Schulthess F. Biological and physical constraints on maize production in the Humid Forest and Western Highlands of Cameroon. *Eur J Plant Pathol*. 2002; 108: 893–902. Available: [https://www.fabnet.up.ac.za/publication/pdfs/230-2002\\_ngoko\\_cardwell\\_marasas\\_wingfield\\_ndemah\\_schulthess\\_eur\\_j\\_pl\\_path.pdf](https://www.fabnet.up.ac.za/publication/pdfs/230-2002_ngoko_cardwell_marasas_wingfield_ndemah_schulthess_eur_j_pl_path.pdf)
6. Gregory PJ, Ingram JSI, Brklacich M. Climate change and food security. *Philos Trans R Soc Lond B Biol Sci*. The Royal Society; 2005; 360: 2139–48. <https://doi.org/10.1098/rstb.2005.1745> PMID: 16433099
7. Strange RN, Scott PR. Plant Disease: A Threat to Global Food Security. *Annu Rev Phytopathol*. 2005; 43: 83–116. <https://doi.org/10.1146/annurev.phyto.43.113004.133839> PMID: 16078878
8. Lal R. Sequestering carbon in soils of arid ecosystems. *L Degrad Dev*. John Wiley & Sons, Ltd.; 2009; 20: 441–454. <https://doi.org/10.1002ldr.934>
9. Waddington JM, Strack M, Greenwood MJ. Toward restoring the net carbon sink function of degraded peatlands: Short-term response in CO<sub>2</sub> exchange to ecosystem-scale restoration. *J Geophys Res*. 2010; 115: G01008. <https://doi.org/10.1029/2009JG001090>
10. Knox J, Hess T, Daccache A, Wheeler T. Climate change impacts on crop productivity in Africa and South Asia. *Environ Res Lett*. IOP Publishing; 2012; 7: 034032. <https://doi.org/10.1088/1748-9326/7/3/034032>
11. Ortega C. A. Insect pests of maize: a guide for field identification [Internet]. Mexico: CIMMYT; 1987. Available: <https://repository.cimmyt.org/xmlui/handle/10883/700>
12. Van Den Berg J, Van Rensburg JBJ, Van Der Westhuizen ME. Status of resistance to *Chilo partellus* (Lepidoptera: Pyralidae) in South African grain sorghum hybrids. *PlantGrond*. 1993; 10. Available: <https://www.tandfonline.com/doi/pdf/10.1080/02571862.1993.10634666>.
13. Kfir R, Overholt WA, Khan ZR, Polaszek A. Biology and management of economically important lepidopteran cereal stem borers in Africa. *Annu Rev Entomol*. Annual Reviews 4139 El Camino Way, P.O. Box 10139, Palo Alto, CA 94303–0139, USA; 2002; 47: 701–731. <https://doi.org/10.1146/annurev.ento.47.091201.145254> PMID: 11729089
14. Calatayud P-A, Le Ru BP, van den Berg J, Schulthess F. Ecology of the African Maize Stalk Borer, *Busseola fusca* (Lepidoptera: Noctuidae) with Special Reference to Insect-Plant Interactions. *Insects*. Multi-disciplinary Digital Publishing Institute (MDPI); 2014; 5: 539–63. <https://doi.org/10.3390/insects5030539> PMID: 26462824
15. Chabi-Olaye A, Nolte C, Schulthess F, Borgemeister C. Abundance, dispersion and parasitism of the stem borer *Busseola fusca* (Lepidoptera: Noctuidae) in maize in the humid forest zone of southern Cameroon. *Bull Entomol Res*. 2005; 95: 169–77. Available: <http://www.ncbi.nlm.nih.gov/pubmed/15877866> PMID: 15877866
16. Chabi-Olaye A, Nolte C, Schulthess F, Borgemeister C. Relationships of intercropped maize, stem borer damage to maize yield and land-use efficiency in the humid forest of Cameroon. *Bull Entomol Res*. 2005; 95: 417–27. Available: <http://www.ncbi.nlm.nih.gov/pubmed/16197562> PMID: 16197562
17. Rose DJW, Dewhurst CF, Page WW. The African Armyworm handbook: the status, biology, ecology, epidemiology and management of *Spodoptera exempta* (Lepidoptera: Noctuidae) [Internet]. second edition. Chatham, UK: Natural Resources Institute; 2000. Available: [http://www.lancaster.ac.uk/armyworm/docs/TheAfricanArmywormHandbook\\_2014revision.pdf](http://www.lancaster.ac.uk/armyworm/docs/TheAfricanArmywormHandbook_2014revision.pdf).
18. Prasanna BM, Huesing JE, Eddy R, Peschke VM. Fall Armyworm in Africa: A guide for integrated pest management [Internet]. First Edition. Mexico: CDMX: CIMMYT; 2018. Available: [https://reliefweb.int/sites/reliefweb.int/files/resources/FallArmyworm\\_IPM\\_Guide\\_forAfrica.pdf](https://reliefweb.int/sites/reliefweb.int/files/resources/FallArmyworm_IPM_Guide_forAfrica.pdf).
19. Goergen G, Kumar PL, Sankung SB, Togola A, Tamò M. First Report of Outbreaks of the Fall Armyworm *Spodoptera frugiperda* (J E Smith) (Lepidoptera, Noctuidae), a New Alien Invasive Pest in West and Central Africa. Luthe DS, editor. *PLoS One*. Public Library of Science; 2016; 11: e0165632. <https://doi.org/10.1371/journal.pone.0165632> PMID: 27788251
20. Hruska AJ, Gould F. Fall armyworm (Lepidoptera: Noctuidae) and *Diatraea lineolata* (Lepidoptera: Pyralidae): impact of larval population level and temporal occurrence on maize yield in Nicaragua. *J Econ Entomol*. Oxford University Press; 1997; 90: 611–622. <https://doi.org/10.1093/jee/90.2.611>
21. IITA. First report of outbreaks of the “Fall Armyworm” on the African continent [Internet]. 2016 [cited 27 Feb 2018]. Available: <http://bulletin.iita.org/index.php/2016/06/18/first-report-of-outbreaks-of-the-fall-armyworm-on-the-african-continent/>.
22. Abrahams P, Bateman M, Beale T, Clotey V, Cock M, Colmenarez Y, et al. Fall Armyworm: impacts and implications for Africa [Internet]. CABI; 2017. Report No.: 2. Available: <http://www.invasive-species.org/Uploads/InvasiveSpecies/FallArmywormEvidenceNoteSeptember2017.pdf>.
23. Tindo M, Tagne A, Tigui A, Kengni F, Atanga J, Bila S, et al. First report of the fall army worm, *Spodoptera frugiperda* (Lepidoptera, Noctuidae) in Cameroon. *Cameroon J Biol Biochem Sci*. 2017; 25: 30–32.



Available: [https://www.ippc.int/static/media/files/pestreport/2017/06/02/first\\_report\\_Fall\\_Army\\_Worm\\_Cameroon.pdf](https://www.ippc.int/static/media/files/pestreport/2017/06/02/first_report_Fall_Army_Worm_Cameroon.pdf).

24. CABI. *Spodoptera frugiperda* (Fall armyworm) [Internet]. 2018. Available: <https://www.cabi.org/isc/datasheetreport/29810>.
25. LARA MLG de, OSUNA GJA, Amarante O. Comportamento de genótipos de milho em relação ao ataque de *Spodoptera frugiperda* (J.E. Smith, 1977) e *Heliothis zea* (BOD, 1850) [Internet]. 1984. Available: <https://www.scienceopen.com/document?vid=86cd715d-1e19-4a37-ba7e-91b1c0c6ae6c>
26. Tefera T, Mugo S, Tende R, Likhayo P. Methods of Screening Maize for resistance to Stem borers and post-harvest . . .—Google Books [Internet]. CIMMYT; 2011. Available: <https://books.google.cm/books?id=hVYrRJEfiwgC&pg=PA21&lpg=PA21&dq=Tefera+T.,+Mugo+S.,+Tende+R.,+and+Likhayo+P.,+2011.+Methods+of+Screening+Maize+for+Resistance+to+Stem+Borers+and+Post-harvest+Insect+Pests&source=bl&ots=IWF-V9PMF&sig=mcY7Hjgbbd7L1Xrqf0uXZ>.
27. Hajibabaei M, Janzen DH, Burns JM, Hallwachs W, Hebert PDN. DNA barcodes distinguish species of tropical Lepidoptera. *Proc Natl Acad Sci*. 2006; 103: 968–971. <https://doi.org/10.1073/pnas.0510466103> PMID: 16418261
28. Silva-Brandão KL, Horikoshi RJ, Bernardi D, Omoto C, Figueira A, Brandão MM. Transcript expression plasticity as a response to alternative larval host plants in the speciation process of corn and rice strains of *Spodoptera frugiperda*. *BMC Genomics*. BioMed Central; 2017; 18: 792. <https://doi.org/10.1186/s12864-017-4170-z> PMID: 29037161
29. Dumas P, Legeai F, Lemaitre C, Scaon E, Orsucci M, Labadie K, et al. *Spodoptera frugiperda* (Lepidoptera: Noctuidae) host-plant variants: two host strains or two distinct species? *Genetica*. Springer; 2015; 143: 305–16. <https://doi.org/10.1007/s10709-015-9829-2> PMID: 25694156
30. Hänniger S, Dumas P, Schöfl G, Gebauer-Jung S, Vogel H, Unbehend M, et al. Genetic basis of allochronic differentiation in the fall armyworm. *BMC Evol Biol*. 2017; 17: 68. <https://doi.org/10.1186/s12862-017-0911-5> PMID: 28264650
31. Otim MH, Tay WT, Walsh TK, Kanyesigye D, Adumo S, Abongosi J, et al. Detection of sister-species in invasive populations of the fall armyworm *Spodoptera frugiperda* (Lepidoptera: Noctuidae) from Uganda. Knapp M, editor. *PLoS One*. Public Library of Science; 2018; 13: e0194571. <https://doi.org/10.1371/journal.pone.0194571> PMID: 29614067
32. Feng C, Wang H, Lu N, Chen T, He H, Lu Y, et al. Log-transformation and its implications for data analysis. *Shanghai Arch psychiatry*. Shanghai Mental Health Center; 2014; 26: 105–9. <https://doi.org/10.3969/j.issn.1002-0829.2014.02.009> PMID: 25092958
33. Hall TA. BioEdit: a user-friendly biological sequence alignment editor and analysis program for Windows 95/98/NT. *Nucleic Acids Symp Ser*. 1999; 41: 95–98. citeulike-article-id:691774.
34. Srinivasan R, Malini P, Othim STO. Fall Armyworm in Africa: Which ‘Race’ is in the Race, and Why Does it Matter? *Curr Sci*. 2018; 114: 27–28. <https://doi.org/10.18520/CS/V114/I01/27-28>
35. Jacobs A, Vuuren A van, Rong IH. Characterisation of the fall armyworm (*Spodoptera frugiperda* J.E. Smith) (Lepidoptera: Noctuidae) from South Africa. *African Entomol. Entomological Society of South Africa (ESSA)*; 2018; 26: 45–49. <https://doi.org/10.4001/003.026.0045>
36. Katoh K, Toh H. Improved accuracy of multiple ncRNA alignment by incorporating structural information into a MAFFT-based framework. *BMC Bioinformatics*. BioMed Central; 2008; 9: 212. <https://doi.org/10.1186/1471-2105-9-212> PMID: 18439255
37. Jallow MFA, Awadh DG, Albaho MS, Devi VY, Thomas BM. Pesticide knowledge and safety practices among farm workers in Kuwait: Results of a survey. *Int J Environ Res Public Health*. 2017; 14: 1–15. <https://doi.org/10.3390/ijerph14040340> PMID: 28338612
38. De Bon H, Huat J, Parrot L, Sinzogan A, Martin T, Malézieux E, et al. Pesticide risks from fruit and vegetable pest management by small farmers in sub-Saharan Africa. A review. *Agron Sustain Dev Springer Verlag/EDP Sci*. 2014; 34: 723–736. <https://doi.org/10.1007/s13593-014-0216-7>
39. Yu SJ, Nguyen SN, Abo-Elghar GE. Biochemical characteristics of insecticide resistance in the fall armyworm, *Spodoptera frugiperda* (J.E. Smith). *Pestic Biochem Physiol*. Academic Press; 2003; 77: 1–11. [https://doi.org/10.1016/S0048-3575\(03\)00079-8](https://doi.org/10.1016/S0048-3575(03)00079-8)
40. Yu SJ. Insecticide resistance in the fall armyworm, *Spodoptera frugiperda* (J. E. Smith). *Pestic Biochem Physiol*. Academic Press; 1991; 39: 84–91. [https://doi.org/10.1016/0048-3575\(91\)90216-9](https://doi.org/10.1016/0048-3575(91)90216-9)
41. Cruz I, De Lourdes M, Figueiredo C, Braga R, Silva D, Foster JE. Efficiency of chemical pesticide to control *Spodoptera frugiperda* and validation of pheromone trap as a pest management tool in maize crop. *Rev Bras Milho e Sorgo*. 2010; 9: 107–122. Available: <http://www.abms.org.br>.
42. Cruz I, Figueiredo MLC, Oliveira AC, Vasconcelos CA. Damage of *Spodoptera frugiperda* (Smith) in different maize genotypes cultivated in soil under three levels of aluminium saturation. *Int J Pest Manag*. Taylor & Francis Group; 1999; 45: 293–296. <https://doi.org/10.1080/096708799227707>

43. Cruz I, Figueiredo M de LC, Silva RB da, Silva IF da, Paula C deSouza, Foster JE. Using sex pheromone traps in the decision-making process for pesticide application against fall armyworm (*Spodoptera frugiperda* [Smith] [Lepidoptera: Noctuidae]) larvae in maize. *Int J Pest Manag.* Taylor & Francis; 2012; 58: 83–90. <https://doi.org/10.1080/09670874.2012.655702>
44. Pannuti LER, Baldin ELL, Hunt TE, Paula-Moraes SV. On-plant larval movement and feeding behavior of fall armyworm (Lepidoptera: Noctuidae) on reproductive corn stages. *Environ Entomol.* 2015; 45: 192–200. <https://doi.org/10.1093/ee/nvv159> PMID: 26476276
45. Cock MJW, Beseh PK, Buddie AG, Cafá G, Crozier J. Molecular methods to detect *Spodoptera frugiperda* in Ghana, and implications for monitoring the spread of invasive species in developing countries. *Sci Rep.* 2017; 7: 4103. <https://doi.org/10.1038/s41598-017-04238-y> PMID: 28642581
46. Kondidie DB. Genetic variability and gene flow of the fall armyworm *Spodoptera frugiperda* (j.e. Smith) in the western hemisphere and susceptibility to insecticides [Internet]. 2011; Dissertations and Student Research in Entomology. 7. <http://digitalcommons.unl.edu/entomologydiss/7>.
47. Groot AT, Marr M, Schöfl G, Lorenz S, Svatos A, Heckel DG. Host strain specific sex pheromone variation in *Spodoptera frugiperda*. *Front Zool. BioMed Central*; 2008; 5: 20. <https://doi.org/10.1186/1742-9994-5-20> PMID: 19109878
48. Lima ER, McNeil JN. Female sex pheromones in the host races and hybrids of the fall armyworm, *Spodoptera frugiperda* (Lepidoptera: Noctuidae). *Chemoecology.* SP Birkhäuser Verlag Basel; 2009; 19: 29–36. <https://doi.org/10.1007/s00049-009-0005-y>
49. Meagher RL, Nagoshi RN. Attraction of Fall Armyworm Males (Lepidoptera: Noctuidae) to Host Strain Females. *Environ Entomol.* 2013; 42: 751–757. <https://doi.org/10.1603/EN13007> PMID: 23905738
50. Unbehend M, Hänniger S, Vásquez GM, Juárez ML, Reisig D, McNeil JN, et al. Geographic Variation in Sexual Attraction of *Spodoptera frugiperda* Corn- and Rice-Strain Males to Pheromone Lures. Newcomb RD, editor. *PLoS One. Public Library of Science*; 2014; 9: e89255. <https://doi.org/10.1371/journal.pone.0089255> PMID: 24586634
51. Herbers JM, Choiniere E. Foraging behaviour and colony structure in ants. *Anim Behav.* 1996; 51: 141–153. <https://doi.org/10.1006/anbe.1996.0012>
52. Gullan PJ, Bora Kaydan M, Hardy NB. Molecular phylogeny and species recognition in the mealybug genus *Ferrisia* Fullaway (Hemiptera: Pseudococcidae). *Syst Entomol. Wiley/Blackwell* (10.1111); 2010; 35: 329–339. <https://doi.org/10.1111/j.1365-3113.2009.00513.x>
53. Avise JC. *Phylogeography: the history and formation of species.* Harvard University Press; 2000.
54. Carvalho LM de, Carvalho HWL de, Oliveira IR de, Rangel MAS, Santos V da S, Carvalho LM de, et al. Productivity and drought tolerance of cassava cultivars in the Coastal Tablelands of Northeastern Brazil. *Ciência Rural. Universidade Federal de Santa Maria*; 2016; 46: 796–801. <https://doi.org/10.1590/0103-8478cr20151035>
55. Jakka SRK, Gong L, Hasler J, Banerjee R, Sheets JJ, Narva K, et al. Field-Evolved Mode 1 Resistance of the Fall Armyworm to Transgenic Cry1Fa-Expressing Corn Associated with Reduced Cry1Fa Toxin Binding and Midgut Alkaline Phosphatase Expression. *Appl Environ Microbiol. American Society for Microbiology*; 2016; 82: 1023–1034. <https://doi.org/10.1128/AEM.02871-15> PMID: 26637593
56. Jakka SRK, Knight VR, Jurat-Fuentes JL. *Spodoptera frugiperda* (J.E. Smith) with field-evolved resistance to Bt maize are susceptible to Bt pesticides. *J Invertebr Pathol. Academic Press*; 2014; 122: 52–54. <https://doi.org/10.1016/j.jip.2014.08.009> PMID: 25218399
57. Prasanna BM, Huesing JE, Eddy R, Peschke VM. *Fall Armyworm in Africa: a guide for integrated pest management* [Internet]. First Edition. Mexico, CDMX: CIMMYT.; 2018. Available: [https://reliefweb.int/sites/reliefweb.int/files/resources/FallArmyworm\\_IPM\\_Guide\\_forAfrica.pdf](https://reliefweb.int/sites/reliefweb.int/files/resources/FallArmyworm_IPM_Guide_forAfrica.pdf).
58. FAO. *Integrated management of the Fall Armyworm on maize A guide for Farmer Field Schools in Africa* [Internet]. Rome; 2018. Available: <http://www.fao.org/3/I8665EN/i8665en.pdf>.