

Osmotrophic glucose and leucine assimilation and its impact on EPA and DHA content in algae

Elina T. Peltomaa¹ and Sami Taipale²

¹ Faculty of Biological and Environmental Sciences, Lammi Biological Station, University of Helsinki, Lammi, Finland

² Department of Biological and Environmental Science, University of Jyväskylä, Jyväskylä, Finland

ABSTRACT

The uptake of dissolved organic compounds, that is, osmotrophy, has been shown to be an efficient nutritional strategy for algae. However, this mode of nutrition may affect the biochemical composition, for example, the fatty acid (FA) contents, of algal cells. This study focused on the osmotrophic assimilation of glucose and leucine by selected seven algal strains belonging to chlorophytes, chrysophytes, cryptophytes, dinoflagellates and euglenoids. Our laboratory experiments with stable isotope labeling showed that osmotrophy occurred in four of the selected seven strains. However, only three of these produced long chain omega-3 FAs eicosapentaenoic acid (EPA; 20:5 ω 3) and docosahexaenoic acid (DHA; 22:6 ω 3). High glucose content (5 mg L⁻¹) affected negatively on the total FAs of *Mallomonas kalinae* and the total omega-3 FAs of *Cryptomonas* sp. Further, glucose assimilation explained 35% (negative effect) and leucine assimilation 48% (positive effect) of the variation of EPA, DHA and the FAs related to their synthesis in *Cryptomonas* sp. Moderate glucose concentration (2 mg L⁻¹) was found to enhance the growth of *Cryptomonas ozolinii*, whereas low leucine (20 μ g L⁻¹) enhanced the growth of *M. kalinae*. However, no systematic effect of osmotrophy on growth rates was detected. Our study shows that osmotrophic assimilation of algae is species and compound specific, and that the effects of the assimilated compounds on algal metabolism also varies depending on the species.

Submitted 9 September 2019

Accepted 6 December 2019

Published 3 January 2020

Corresponding author

Elina T. Peltomaa,
elina.peltomaa@helsinki.fi

Academic editor

John Berges

Additional Information and
Declarations can be found on
page 13

DOI 10.7717/peerj.8363

© Copyright

2020 Peltomaa and Taipale

Distributed under

Creative Commons CC-BY 4.0

Subjects Ecology, Freshwater Biology

Keywords Mixotrophy, Omega-3 fatty acids, Stable isotope labeling, Cryptophytes

INTRODUCTION

Mixotrophy, that is, the ability of an organism to combine autotrophy and heterotrophy and thus get sustenance simultaneously from inorganic and organic sources, is gaining increasing attention in studies of aquatic as well as terrestrial ecosystems. In aquatic habitats, mixotrophy is common in unicellular organisms such as algae, cyanobacteria and protists (Flynn *et al.*, 2013; Schmidt, Raven & Paungfoo-Lonhienne, 2013). The heterotrophic nutrition in mixotrophy is via phagotrophy (particle or cell uptake) or osmotrophy (uptake of dissolved organic compounds), both of which may occur in tandem with photosynthesis or during dark periods, for example, nights.

OPEN ACCESS

The detection of mixotrophic behavior can be challenging both in laboratory and field conditions, and thus, for example, radioactive isotope labeling has been applied to study the osmotrophic nutrient uptake ([Kamjunke & Tittel, 2008](#); [Tittel et al., 2009](#); [Beamud et al., 2014](#)). These studies have shown that many algae have the ability to assimilate carbohydrates (e.g., glucose), amino acids (e.g., glutamine, leucine, thymidine, aspartic acid) and other organic compounds (e.g., acetic acid, coumaric acid, glycerol), which they use as carbon and nitrogen sources, and which are commonly released by the algae themselves or by bacteria ([Hellebust, 1965](#); [Kamjunke & Tittel, 2008](#); [Tittel et al., 2009](#); [Beamud et al., 2014](#); [Dąbrowska, Nawrocki & Szeląg-Wasielewska, 2014](#)). Osmotrophy has been shown to be an efficient nutrition strategy for algae in nature: osmotrophic assimilation of amino acids prevent nitrogen limitation, which favors biomass growth in oligotrophic lakes ([Kamjunke & Tittel, 2008](#)). Similarly, osmotrophic uptake of fulvic acids enhances biomass growth and boost bloom forming in humic lakes ([Rengefors et al., 2008](#)).

Osmotrophic nutrition may affect the biochemical composition of algal cells. Biosynthesis of various molecules is determined by phylogeny-based traits and there is a significantly different composition of, for example, fatty acids (FAs) in different algal taxa ([Kohli et al., 2016](#)). It is reported that growth conditions account for relatively low variation in algal FAs compared to phylogeny ([Galloway & Winder, 2015](#)); however, studies with *Ochromonas* sp. ([Boëchat et al., 2007](#)) showed decreased polyunsaturated fatty acid (PUFA) concentration by feeding mode. Thus, even though the FA profiles and the quality of synthesized FAs may not change, the quantity of different FAs might be affected by the growth mode. For example, nitrogen limitation favors FA synthesis and lipid accumulation in algal cells, and thus if algae can assimilate leucine and use it as their nitrogen source, they should not start to accumulate lipids but carry on cell division as long as the other essential nutrients are available. In turn, osmotrophically assimilated glucose is channeled directly into lipid synthesis, that is, to palmitic acid (16:0), which results in building up of triacylglycerols and for example, long chain polyunsaturated FAs (LC-PUFAs; [Ratledge, 2004](#)). Some LC-PUFAs belong to omega-3 FAs (e.g., eicosapentaenoic acid (EPA; 20:5 ω 3) and docosahexaenoic acid (DHA; 22:6 ω 3)), and for their part are of utmost importance for the growth and reproduction of consumers in aquatic food webs ([Peltomaa et al., 2017](#); [Taipale et al., 2018](#)). Since algae are practically the only primary source of EPA and DHA in aquatic food webs ([Colombo et al., 2017](#)), osmotrophic nutrient uptake may affect the whole food web by influencing the availability of these nutritionally essential compounds, and thus the growth and reproduction of upper trophic levels ([Jonasdottir, 1994](#); [Brett et al., 2006](#); [Peltomaa et al., 2017](#); [Taipale et al., 2018](#)).

In this study we focused on the osmotrophic uptake of glucose and leucine by selected seven algal strains belonging to chlorophytes, chrysophytes, cryptophytes, dinoflagellates and euglenoids. We conducted short-term stable isotope labeling experiments with these algae to determine if they are able to assimilate glucose and/or leucine. Since we were especially interested in the effects of osmotrophy on EPA and DHA production, we analyzed the FAs of these strains. For studying the impact of osmotrophy on FA synthesis,

we selected the EPA and DHA synthesizing osmotrophic strains and cultured them with glucose, leucine and mix of these two in a long-term experiment for 14 days, that is, until the cultures reached the stationary or late exponential phase, during which the LC-PUFAs are mobilized from the membranes into storage lipids (Roessler, 1990; Boelen et al., 2017). We hypothesized that (1) all of the strains are osmotrophic, that is, assimilate glucose and leucine, (2) osmotrophy has positive effect on their growth, and that (3) the osmotrophic uptake of glucose increases the EPA and DHA concentrations in algae capable of synthesizing these FAs, whereas (4) the uptake of leucine does not affect specifically their EPA and DHA concentrations, but may actually lower their total FA content.

MATERIALS AND METHODS

The algal strains and growth conditions

The studied algal strains were from freshwater origin, and included chlorophytes *Chlamydomonas reinhardtii* (from the collection of the University of Washington, UWCC, Seattle, WA, USA) and *Selenastum* sp. (SCCAP K-1877), chrysophyte *Mallomonas kalinae* (SCCAP K-1759), cryptophytes *Cryptomonas* sp. (CPC 336) and *C. ozolinii* (UTEX LB 2782), dinoflagellate *Peridinium* sp. (author's collection, isolated from Lake Valkea-Kotinen, Finland, 61.14°N, 25.04°E in 2015) and euglenoid *Euglena gracilis* (CCAP 1224/5Z). The stock cultures of the strains were grown autotrophically in AF6 medium (*E. gracilis*; Watanabe et al., 2000) or MWC medium (all the other strains; Guillard & Lorenzen, 1972) at 20 °C under light:dark cycle of 16:8 h with light intensity of 70–100 $\mu\text{mol m}^{-2} \text{s}^{-1}$. The cultures were not axenic, but the initial numbers of bacteria were low due to the growth media consisting of inorganic nutrients. The bacterial numbers were not determined, but bacterial FA biomarkers were included in the FA analysis (see below). The algal cultures were grown to late exponential phase before they were used in the experiments.

Short-term stable isotope labeling experiments

For the short-term stable isotope experiment, the autotrophically grown seven algal strains were grown to stationary phase, collected with centrifugation into pellets (200 mL, 5 min, 2,000 rpm, which was pre-examined as safe for the fragile flagellates), and further resuspended into 50 mL of fresh AF6 (*E. gracilis*) or MWC media (all the other strains) enriched with glucose 5 mg L⁻¹ (containing 4.9 mg L⁻¹ non-labeled D-(+)-Glucose (Sigma-Aldrich Co., St. Louis, MO, USA) and 0.1 mg L⁻¹ ¹³C-labeled D-Glucose (Sigma-Aldrich Co., St. Louis, MO, USA)) or with leucine 400 $\mu\text{g L}^{-1}$ (containing 392 μg non-labeled L-Leucine (Sigma-Aldrich Co., St. Louis, MO, USA) and 8 μg ¹⁵N-labeled L-Leucine (Sigma-Aldrich Co., St. Louis, MO, USA)) or with both. Three independent replicates were used for each algae and treatment, and non-labeled autotrophic controls were run in parallel. The incubation took place at 20 °C under a constant light intensity of 70–100 $\mu\text{mol m}^{-2} \text{s}^{-1}$, that is, the possible dark-time heterotrophic assimilation of glucose and leucine was excluded from this short-term experiment. The incubation time was only 30 min to preventing respiration loss of the labels, but it was still long enough to

acquiring detectable changes in cellular $\delta^{13}\text{C}$ and $\delta^{15}\text{N}$ concentrations. After the incubation, the samples were centrifuged (2,000 rpm, 5 min), the supernatants were discarded, and the pellets were flushed by diluting them into 30 mL of fresh AF6 (*E. gracilis*) or MWC media (all the other strains) and centrifuging them again. After discarding the supernatants, the pellets were frozen in $-80\text{ }^{\circ}\text{C}$, and freeze-dried within 2 days. The $\delta^{13}\text{C}$ and $\delta^{15}\text{N}$ as well as FA profiles were analyzed from these samples.

The $\delta^{13}\text{C}$ and $\delta^{15}\text{N}$ analyses

For the $\delta^{13}\text{C}$ and $\delta^{15}\text{N}$ analyses, approximately 2 mg of the freeze-dried algal biomass was weighed into tin capsules. The analyses were carried out on a Carlo-Erba Flash 1112 series Element Analyzer connected to a Thermo Finnigan Delta Plus Advantage IRMS (Thermo Fisher Scientific, Waltham, MA, USA). Four replicates were run from each sample. The samples were compared to the NBS-22 standard using birch leaf powder as a laboratory-working standard. The precision of the $\delta^{13}\text{C}$ and the $\delta^{15}\text{N}$ analyses were 0.2% and 0.3%, respectively, for all samples.

Fatty acid analysis

Two replicates of each freeze-dried sample were weighed (1–2 mg/sample) into tin capsules and the lipids were extracted using chloroform:methanol (2:1) NaCl-method (Parrish, 1999). Toluene and sulfuric acid were used for the transesterification of fatty acid methyl esters (FAMES) at $90\text{ }^{\circ}\text{C}$ for 1 h. The FAMES were analyzed with a gas chromatograph (Shimadzu Ultra, Kyoto, Japan) equipped with a mass detector (GC-MS; Shimadzu Ultra, Kyoto, Japan) and using helium as a carrier gas and an Agilent[®] (Santa Clara, CA, USA) DB-23 column (30 m \times 0.25 mm \times 0.15 μm). FA concentrations were calculated using calibration curves based on known standard solutions of a FAME standard mixture (GLC standard mixture 566c, Nu-ChekPrep, Elysian, MN, USA) (see Taipale et al., 2016 for further details). The 16:0, alpha-linolenic acid (ALA; 18:3 ω 3), stearidonic acid (SDA; 18:4 ω -3), EPA and DHA concentrations, and the total sum of monounsaturated FAs with 16 carbons (16 Monounsaturated fatty acids (MUFAs)) and 18 carbons (18 MUFAs) were in the focus of this study and thus reported here. The FA biomarkers for bacteria (i-14:0, i-15:0, a-15:0, i-16:0, i-17:0 and a-17:0; Brennan, 1989; Taipale et al., 2015) were also detected in order to ensure that the numbers of bacteria were low, that is, the glucose and leucine were assimilated by the algae, not by bacteria.

The long-term osmotrophy experiments

The long-term experiments were done only for those three strains that were detected to be osmotrophic (i.e., assimilated either glucose or leucine or both in the short-term experiment) and, based on the results from the short-term study, were detected to synthesize either EPA or DHA or both. These strains were: *M. kalinae*, *Cryptomonas* sp. and *C. ozolinii*. The long-term experiments were run in independent triplicates, and using three different glucose (0.5, 2 and 5 mg L⁻¹) and leucine (20, 100 and 400 $\mu\text{g L}^{-1}$) concentrations selected based on literature (Kamjunke et al., 2008, Kamjunke & Tittel, 2008).

There were no mixed treatments of glucose and leucine, but autotrophic controls were run in parallel. The algal cells were collected into pellets from the stock cultures similarly to short-term experiments before transferring them into the experimental flasks of 250 mL. The strains were grown for 15–16 days in similar conditions as the algal stock cultures and the growth was followed through microscopic counts every 3rd day using Sedgewick Rafter–counting cells and preservation with acid Lugol’s solution (*Willén, 1962*). The specific growth rates (μ ; d^{-1}) for all strains were calculated using the Eq. (1). The cells were grown into the stationary or late exponential phase (Fig. S1), harvested during the light-period of the light:dark-cycle, and pelleted, frozen ($-80\text{ }^{\circ}\text{C}$) and freeze-dried. The FA profiles were analyzed similarly to the short-term samples (see above), but only from two replicates of each treatment and from one control.

$$\mu = \ln(\text{cells } T_x / \text{cells } T_0) / (T_x - T_0) \quad (1)$$

where:

μ is the specific growth rate

cells T_0 is the cell number at time 0 (T_0)

cells T_x is the cell number at time x (T_x)

Statistical analyses

The results of the short-term isotope labeling experiments were statistically tested with t -test by comparing the non-labeled autotrophic control samples with the labeled samples. The effects of osmotrophy on growth and FA contents were in the long-term experiment tested with the analysis of variance (ANOVA) and Tukey’s honestly significant difference (HSD) post hoc test. Levene’s test was used for testing the homogeneity of variances. Principal component analysis (PCA), permutational multivariate analysis of variances (PERMANOVA) and similarity percentages (SIMPER) were used for a more detailed study of the similarity of the FA profiles between the treatments in the long-term experiment. In PCA the 16:0, ALA, 18:3 ω 3; SDA, 18:4 ω -3; EPA and DHA concentrations, and the total sum of monounsaturated FAs with 16 carbons (16 MUFAs) were included in the analysis. In PERMANOVA and SIMPER the analysis included the above mentioned FAs and also MUFAs with 18 carbons (18 MUFAs). All glucose treatments and all leucine treatments were pooled for the analysis in PERMANOVA and SIMPER. PERMANOVA was run with unrestricted permutation of raw data and type III sums of squares. Monte Carlo adjustment was used in PERMANOVA due to low numbers of replicates. In the statistical testing, p -values < 0.05 were considered as significant. ANOVA and Tukey’s and Levene’s tests were conducted with IBM SPSS Statistics for Windows, Version 22.0 (IBM Corp., Armonk, NY, USA). PCA, PERMANOVA and SIMPER were done using Primer 7 (version 7.0.13; Quest Research Limited, Auckland, New Zealand).

RESULTS

The osmotrophic glucose and leucine uptake

The studied strains showed different responses to glucose and leucine additions in the short-term experiment (Fig. 1; Table S1). The chlorophyte *C. reinhardtii*, the dinoflagellate

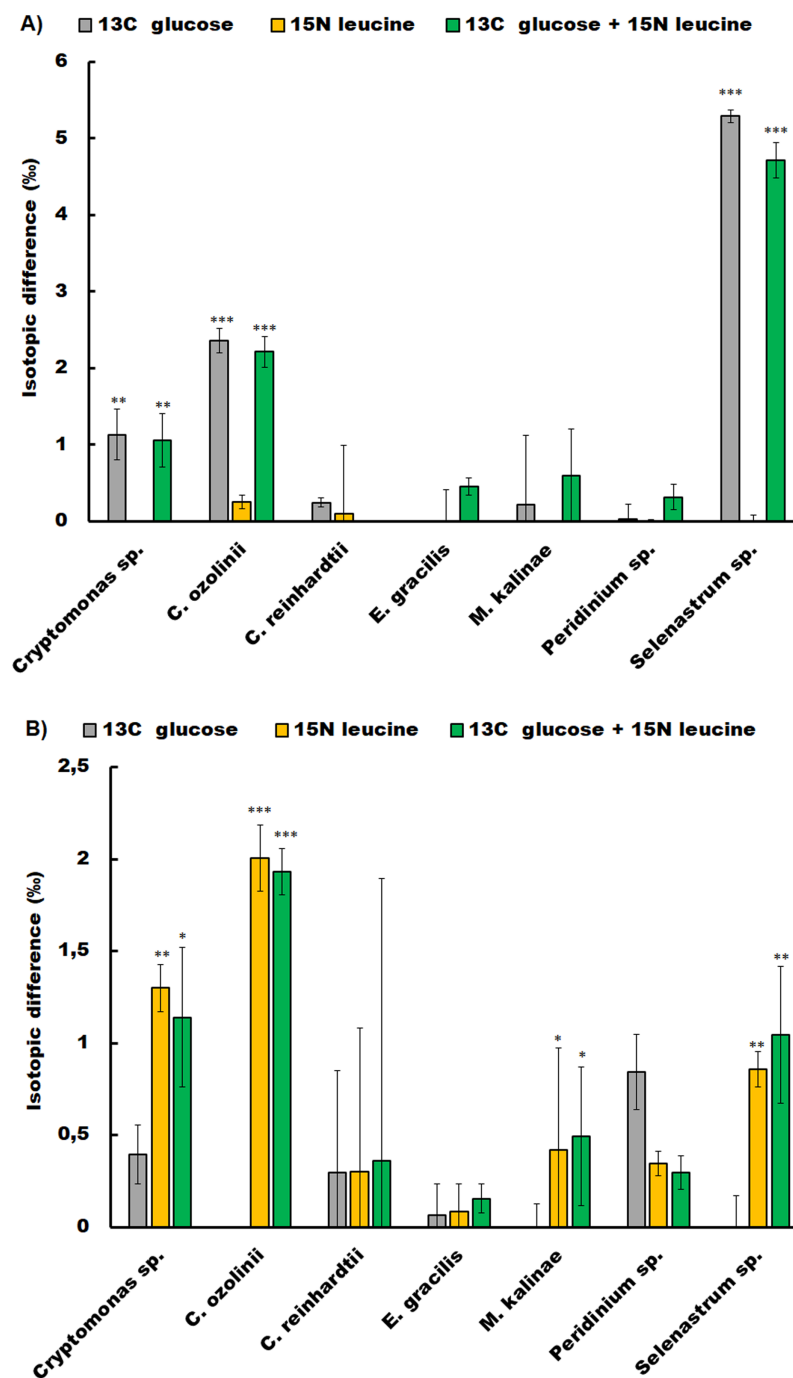


Figure 1 Osmotrophic glucose and leucine assimilation. The osmotrophic glucose and leucine assimilation in the studied algal strains was detected with stable isotope labeling. The figures show the isotopic difference in ^{13}C (A) and ^{15}N (B) between the treatments in *Cryptomonas* sp., *Cryptomonas ozolinii*, *Chlamydomonas reinhardtii*, *Euglena gracilis*, *Mallomonas kalinae*, *Peridinium* sp. and *Selenastrum* sp. in the short-term experiment. The cultures were inoculated with ^{13}C -labeled glucose, ^{15}N -labeled leucine and mixture of these two. The total concentration of glucose in the experiment was 5 mg L^{-1} and leucine 400 mg L^{-1} . Replication $n = 3$. The bars show standard errors, statistically significant difference between the non-labeled and labeled treatments are marked with star symbols (ANOVA, * $p < 0.5$, ** $p < 0.1$ and *** $p < 0.01$). [Full-size !\[\]\(1679558f37f6db0dd8360a2a7e913e90_img.jpg\) DOI: 10.7717/peerj.8363/fig-1](https://doi.org/10.7717/peerj.8363/fig-1)

Table 1 Growth rates. The maximal specific growth rates (μ ; d^{-1}) of *Mallomonas kalinae*, *Cryptomonas* sp. and *C. ozolinii* in the long-term experiment. The growth rates were calculated for the exponential growth phase using Eq. (1). Replication $n = 3$.

Strain	Control	Glucose 0.5	Glucose 2	Glucose 5	Leucine 20	Leucine 100	Leucine 400
<i>Mallomonas kalinae</i>	0.20 (0.03)	0.20 (0.08)	0.23 (0.01)	0.20 (0.01)	0.47 (0.05)*	0.20 (0.04)	0.16 (0.06)
<i>Cryptomonas</i> sp.	0.21 (0.04)	0.23 (0.06)	0.36 (0.05)	0.26 (0.02)	0.23 (0.04)	0.25 (0.05)	0.28 (0.03)
<i>Cryptomonas ozolinii</i>	0.52 (0.01)	0.41 (0.01)	0.88 (0.07)*	0.34 (0.07)	0.34 (0.05)	0.65 (0.05)	0.57 (0.02)

Note:

* ANOVA $p < 0.01$, standard deviations are given in parenthesis.

Peridinium sp. and the euglenoid *E. gracilis* did not show glucose or leucine assimilation at all. Whereas, the chlorophyte *Selenastrum* sp. assimilated both compounds (glucose t -test $p < 0.001$, leucine t -test $p = 0.04$), as did also the cryptophytes *Cryptomonas* sp. (glucose t -test $p < 0.01$, leucine t -test $p = 0.02$) and *C. ozolinii* (glucose t -test $p < 0.01$, leucine t -test $p < 0.001$). The chrysophyte *M. kalinae* did not assimilate glucose, but assimilated leucine (t -test $p < 0.01$).

Fatty acid profiling of the short-term experiment

The FA profiling of the short-term experiments showed that the strains capable of EPA and/or DHA synthesis were *M. kalinae* (average EPA 0.3% of all FAs, sd 0.0; average DHA 3.2% of all FAs, sd 0.1), *Cryptomonas* sp. (EPA 17.6%, sd 0.0; DHA 2.3%, sd 0.0), *C. ozolinii* (EPA 13.9%, sd 1.3; DHA 2.1%, sd 0.2), *Peridinium* sp. (EPA 13.4%, sd 0.0; DHA 25.1%, sd 0.6) and *E. gracilis* (EPA 14.3%, sd 0.8; DHA 8.4%, sd 0.2). However, because only *M. kalinae*, *Cryptomonas* sp. and *C. ozolinii* were showing osmotrophic uptake of glucose and/or leucine, these three strains were selected for the long-term experiment. FA biomarkers for bacteria (i-14:0, i-15:0, a-15:0, i-16:0, i-17:0 and a-17:0) were not found in the analysis.

The effect of osmotrophy on growth, total FAs and EPA and DHA production

In general, *C. ozolinii* had higher specific growth rates than the two other studied strains in the long-term experiment. The highest growth rate in *C. ozolinii* ($\mu = 0.88 d^{-1}$; ANOVA $p < 0.01$) was detected with moderate glucose concentration of $2 mg L^{-1}$, and in *M. kalinae* ($\mu = 0.47 d^{-1}$, ANOVA $p < 0.01$) with low leucine concentration of $20 \mu g L^{-1}$, but otherwise there were no signs that the osmotrophic nutrition would have had increased or decreased the growth rates of the studied three strains (Table 1).

The highest total FA concentration (i.e., $88.8 \mu g$ FA in mg DW) was found in the autotrophic *M. kalinae*, and the total FAs of *M. kalinae* were also detected to vary according to the treatment that was lowest ($33.8 \mu g$ FA in mg DW) in the $5 mg L^{-1}$ glucose treatment (Table 2). However, it could not be firmly stated that either glucose or leucine addition would have had certain effects on the total FA content in *M. kalinae*. There were no treatment-based variation in the total FAs of the two cryptophytes either, but there was species specific variation: the total FA concentrations in *Cryptomonas* sp. (52.8 – $73.6 \mu g$ FA in mg DW) were substantially higher in all treatments than in *C. ozolinii* (range

Table 2 Fatty acid results. The concentrations (μg in mg dry weight) of 16:0 fatty acid (FA), alpha-linolenic acid (ALA; 18:3 ω 3), stearidonic acid (SDA; 18:4 ω 3), eicosapentaenoic acid (EPA; 20:5 ω 3), docosahexaenoic acid (DHA; 22:6 ω 3), total omega-3 (ω -3) FAs and total FAs in *M. kalinae*, *Cryptomonas* sp. and *C. ozolinii* in autotrophic controls and when grown osmotrophically with different glucose (i.e., 0.5 mg L⁻¹, 2 mg L⁻¹, 5 mg L⁻¹) and leucine (20 mg L⁻¹, 100 mg L⁻¹, 400 mg L⁻¹) concentrations in the long-term experiment. Replication $n = 3$. Standard deviations are given in parenthesis. Different letters (a, b, c) denote significant differences (Tukey's HSD $p < 0.05$) between treatments, only statistically significant results are indicated.

Strain	Fatty acid	Control	Glucose 0.5	Glucose 2	Glucose 5	Leucine 20	Leucine 100	Leucine 400
<i>Mallomonas kalinae</i>	16:0	8.2 (2.3)	4.1 (0.1)	7.9 (1.5)	5.0 (1.9)	8.1 (1.0)	4.0 (0.1)	6.8 (1.9)
	ALA	7.3 (0.0) ^a	6.7 (4.1) ^{ab}	8.3 (0.0) ^b	4.8 (4.7) ^{abc}	10.9 (1.1) ^b	4.6 (0.3) ^c	8.0 (1.1) ^{ab}
	SDA	10.3 (1.6) ^a	8.3 (6.3) ^a	9.0 (1.4) ^a	6.2 (5.4) ^{ab}	12.9 (1.2) ^a	5.6 (0.4) ^b	10.6 (3.9) ^{ab}
	EPA	0.3 (0.0) ^a	0.2 (0.1) ^{ab}	0.3 (0.0) ^a	0.2 (0.1) ^{ab}	0.3 (0.0) ^a	0.1 (0.0) ^b	0.3 (0.0) ^a
	DHA	0.8 (0.0)	0.7 (0.5)	0.8 (0.1)	0.6 (0.3)	1.0 (0.1)	0.4 (0.0)	0.7 (0.2)
	Total FA	88.8 (5.8) ^a	70.3 (8.7) ^{ab}	74.1 (18.9) ^{ab}	33.8 (14.8) ^{bc}	63.8 (27.9) ^{ab}	45.6 (0.3) ^b	56.8 (22.3) ^{ab}
<i>Cryptomonas</i> sp.	16:0	7.8 (1.0) ^{ab}	7.8 (1.6) ^{ab}	13.6 (0.4) ^b	8.6 (0.7) ^{ab}	10.4 (1.2) ^{ab}	7.6 (2.0) ^{ab}	10.2 (0.3) ^a
	ALA	21.7 (3.7) ^{ab}	16.8 (2.3) ^{ab}	23.2 (0.3) ^a	18.9 (3.2) ^{ab}	20.1 (0.9) ^{ab}	17.1 (1.2) ^{ab}	18.0 (0.2) ^b
	SDA	11.5 (2.2)	14.9 (1.3)	17.1 (2.6)	15.1 (3.8)	20.8 (2.2)	13.3 (4.0)	23.0 (1.2)
	EPA	13.1 (2.1) ^a	11.5 (0.5) ^{ab}	13.6 (3.3) ^{ab}	12.3 (2.7) ^{ab}	14.9 (2.5) ^{ab}	11.1 (3.0) ^{ab}	16.8 (0.4) ^b
	DHA	1.4 (0.0)	2.0 (0.2)	2.1 (0.6)	1.8 (0.6)	2.8 (0.3)	1.7 (0.6)	3.4 (0.2)
	Total FA	60.7 (2.1)	52.8 (16.5)	73.6 (3.1)	70.5 (15.6)	67.7 (16.2)	55.9 (7.8)	68.8 (26.1)
<i>Cryptomonas ozolinii</i>	16:0	4.3 (0.0)	5.2 (1.5)	4.8 (1.5)	4.6 (0.2)	5.3 (1.0)	4.5 (0.2)	5.0 (0.1)
	ALA	8.1 (1.3)	10.1 (3.6)	9.5 (4.1)	9.0 (0.8)	10.9 (2.1)	9.2 (0.5)	8.5 (2.8)
	SDA	8.5 (0.2)	11.7 (4.2)	10.9 (6.1)	11.1 (0.8)	13.6 (1.7)	11.5 (1.2)	10.0 (3.7)
	EPA	7.0 (2.6) ^a	8.9 (2.8) ^{ab}	8.5 (4.5) ^{ab}	9.1 (1.8) ^{ab}	11.1 (0.1) ^b	9.7 (1.6) ^{ab}	8.2 (2.5) ^{ab}
	DHA	1.6 (0.0) ^a	2.2 (0.7) ^{ab}	2.0 (1.2) ^{ab}	2.4 (0.7) ^{ab}	2.8 (0.0) ^b	2.6 (0.5) ^{ab}	2.0 (0.7) ^{ab}
	Total FA	35.9 (7.1)	35.2 (0.3)	44.8 (18.0)	37.1 (4.6)	45.1 (16.9)	43.0 (9.6)	32.9 (2.8)

32.9–45.1 μg FA in mg DW; Table 2). FA biomarkers for bacteria (i-14:0, i-15:0, a-15:0, i-16:0, i-17:0 and a-17:0) were not found in the FA analysis.

The proportion of omega-3 FAs (i.e., ALA, SDA, EPA and DHA) out of total FAs varied between the strains being lowest in *M. kalinae* (range 21.3–40.3%), and was substantially higher in *Cryptomonas* sp. (range 76.8–89.9%) and in *C. ozolinii* (69.9–94.8%; Fig. 2). The PCA plot of the omega-3 FAs clustered the strains into their own groups in spite of the growth conditions (Fig. 3) indicating strong genetic control of FA profiles and synthesis. When EPA and DHA were studied more in detail, no clear evidence of the effects of osmotrophy on the contents of these FAs were found with ANOVA: in *M. kalinae* EPA and its precursor ALA varied between the treatments, in *Cryptomonas* sp. variations were found in 16:0, ALA and EPA, and in *C. ozolinii* in EPA and DHA, but either glucose or leucine could not be stated to have specific effect on these omega-3 FAs (Table 2; Table S2). However, when the 16:0, ALA, SDA, EPA, DHA, 16 MUFA and 18 MUFA concentrations were studied with PERMANOVA, the glucose assimilation were found to explain 35% (PERMANOVA, $F_{(3, 6)} = 2.74$, $p = 0.025$) and the leucine assimilation 48% (PERMANOVA, $F_{(3, 6)} = 3.78$, $p = 0.021$) of the variation in these FAs in *Cryptomonas* sp. (Table 3). Statistically significant results were not found with PERMANOVA for *M. kalinae* or *C. ozolinii* (Table 3). These observations are in line with the results of the PCA (Fig. 3), indicating that *Cryptomonas* sp. differ from *M. kalinae*, but also from *C. ozolinii*.

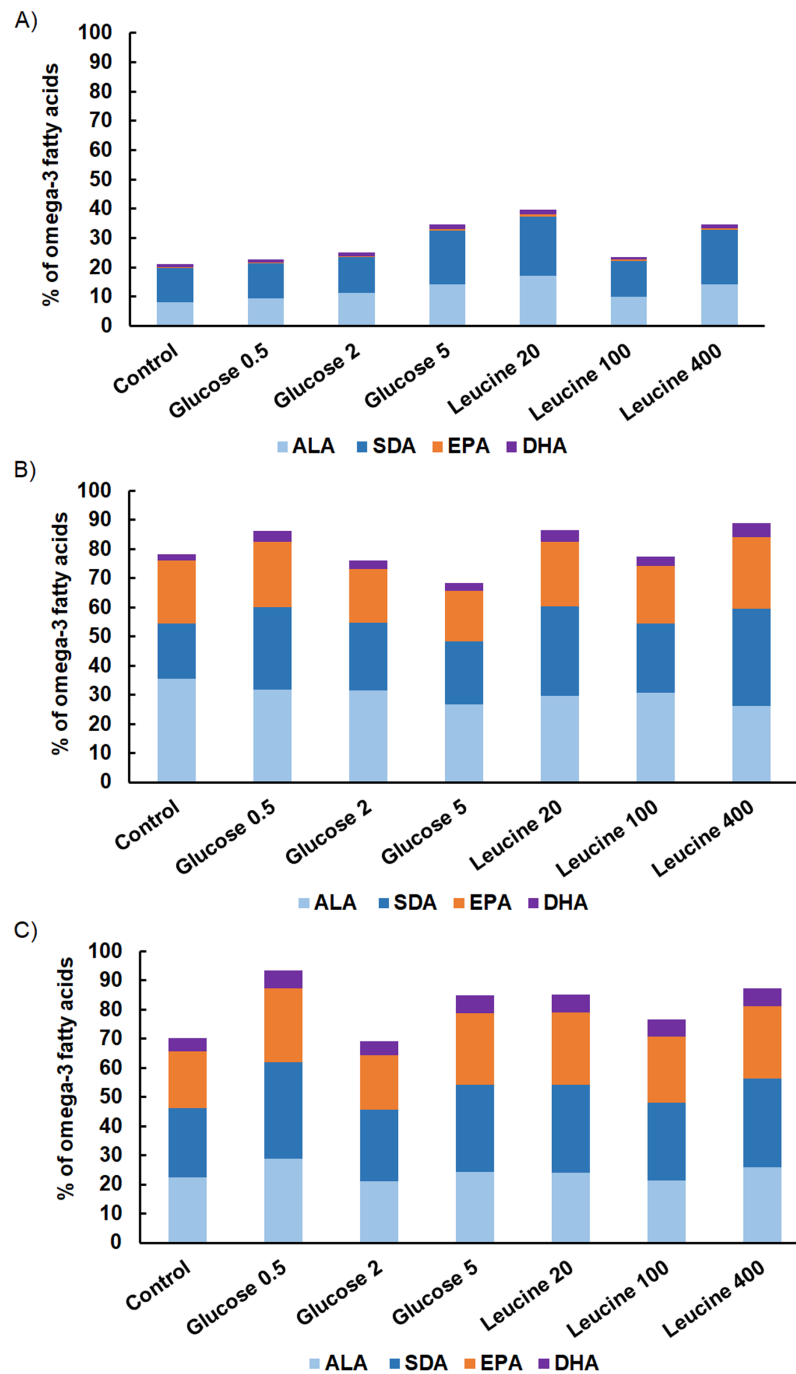


Figure 2 Fatty acid contents. The proportions of omega-3 FAs (alpha-linolenic acid, ALA; 18:3 ω 3, stearidonic acid, SDA; 18:4 ω 3, eicosapentaenoic acid, EPA; 20:5 ω 3, docosahexaenoic acid, DHA; 22:6 ω 3) on total omega-3 FAs in (A) *M. kalinae*, (B) *Cryptomonas* sp. and (C) *C. ozolinii* in autotrophic controls and when grown osmotrophically with different glucose (i.e., 0.5 mg L⁻¹, 2 mg L⁻¹, 5 mg L⁻¹) and leucine (20 mg L⁻¹, 100 mg L⁻¹, 400 mg L⁻¹) concentrations in the long-term experiment. Replication $n = 3$.

Full-size  DOI: 10.7717/peerj.8363/fig-2

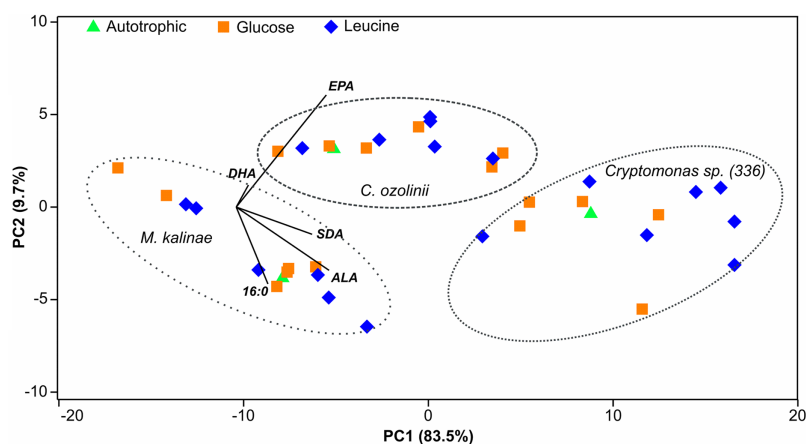


Figure 3 PCA plot. Principal component analysis (PCA) plot of the 16:0 fatty acid (FA), alpha-linolenic acid (ALA; 18:3 ω 3), stearidonic acid (SDA; 18:4 ω 3), eicosapentaenoic acid (EPA; 20:5 ω 3) and docosahexaenoic acid (DHA; 22:6 ω 3) of the long-term experiment showing that the studied three strains (*Mallomonas kalinae*, *Cryptomonas* sp. (CPC 336) and *C. ozolinii*) differ from each other based on these FAs despite of the growth conditions (autotrophic, or osmotrophic with glucose or leucine; data shown in Table S2). [Full-size !\[\]\(1663bb69f307a960345edb0e712f8c02_img.jpg\) DOI: 10.7717/peerj.8363/fig-3](https://doi.org/10.7717/peerj.8363/fig-3)

Table 3 PERMANOVA results. Permutational multivariate analysis of variances (PERMANOVA) results for comparisons of the similarity of the concentrations of selected FAs (16:0, ALA, SDA, EPA, DHA, 16 MUFA, 18 MUFA) between the treatments in the long-term experiment. For the analysis, all glucose and all leucine treatments were pooled, thus replication $n = 9$. SS, sum of squares; MS, mean squares; P (perm) significance; P (MC) significance after Montecarlo correction. Statistically significant results are bolded.

Strain	Treatment	df	SS	MS	Pseudo-F	P (perm)	P (MC)
<i>Mallomonas kalinae</i>	Glucose	3	1697.1	565.71	1.4768	0.253	0.271
	Leucine	3	1564.9	521.63	1.3617	0.331	0.339
<i>Cryptomonas</i> sp.	Glucose	3	375.57	125.19	2.7389	0.025	0.047
	Leucine	3	518.04	172.68	3.7779	0.021	0.03
<i>Cryptomonas ozolinii</i>	Glucose	3	117.55	39.184	0.20727	0.918	0.898
	Leucine	3	339.31	113.1	0.59828	0.702	0.654

DISCUSSION

In this study, we focused on the osmotrophic nutrition and omega-3 FA production of seven algal strains representing chlorophytes, chrysophytes, cryptophytes, dinoflagellates and euglenoids. We expected that all of the studied strains would assimilate glucose and leucine (**Hypothesis 1**), but this was not the case. The chlorophyte *C. reinhardtii*, the dinoflagellate *Peridinium* sp. and the euglenoid *E. gracilis* did not assimilate either glucose or leucine during the 30 min incubation period of our short-time experiment. Furthermore, the chrysophyte *M. kalinae* assimilated only leucine. The uptake velocities of different algae may vary for different compounds (*North & Stephens, 1972*) and depending on the growth mode (*Wheeler, North & Stephens, 1974*), and thus it is possible that even though our cultures were on stationary phase and assumingly depleted by nutrients, our 30 min incubation time was not sufficient enough for assimilation for some of the algae

used in this study. We did the incubations in light, which also could have affected the results, since in some cases algae have shown higher osmotrophic assimilation in dark than in light for glucose (Beamud *et al.*, 2014) and leucine (Ruiz-González *et al.*, 2012). However, many algal species are reported to enhance their osmotrophic uptake in light (Tittel *et al.*, 2009; Beamud *et al.*, 2014). Additionally, our experiments were done in nutrient-rich AF6 or MWC medium, but inorganic nutrient limitation could have triggered rapid osmotrophic uptake (Kamjunke & Tittel, 2008). However, it has also been shown by Beamud *et al.* (2014) that osmotrophic feeding mode is not triggered only by nutrient deficiency: in their study the chlorophytes *Keratococcus raphidioides* and *Watanabea* sp. assimilated leucine, thymidine, aspartic acid and acetate also under high levels of inorganic nitrogen and phosphorus, and not only during nutrient limitation. Altogether, our study and the previous observations show that osmotrophic assimilation of algae is both species and compound specific, and that generalizations on the occurrence of osmotrophy within certain taxa cannot be done.

For studying the effects on osmotrophy on algal FAs, especially the LC-PUFAs, the FA profiles of the strains were screened in the short-term study. It is already known that most EPA and DHA producing algae belong to the kingdom Chromista, that is, to cryptophytes, haptophytes and heterokonts (Cavalier-Smith, 2010; Mühlroth *et al.*, 2013). This was the case also with our algae: EPA and DHA was found in all strains excluding the chlorophytes *C. reinhardtii* and *Selenastrum* sp. However, since we specifically focused on the effects of osmotrophic nutrition on EPA and DHA production, only *M. kalinae* and the two cryptophyte strains showing osmotrophic assimilation were studied in our long-term experiment. In this experiment, we expected that (Hypothesis 2) the growth rates would have been enhanced by the osmotrophic growth mode, as has earlier been reported for the raphidophyte *Gonyostomum semen* (Rengefors *et al.*, 2008) and for the chlorophytes *K. raphidioides* and *Watanabea* sp. (Beamud *et al.*, 2014). This however was not the case, and excluding some statistically significant differences in the growth rates of *M. kalinae* and *C. ozolinii*, the growth rates could not be directly related to glucose or leucine assimilation. We cannot fully explain the reason behind these two observations on higher growth rates, but are aware that for example, mixotrophic phagotrophy on bacteria may increase algal growth (Yoo *et al.*, 2017). We did not observe high amounts of bacteria in the samples during the algal cell counts or detect bacterial FA biomarkers in the FA analysis. However, we did not calculate the bacterial numbers nor study the possible assimilation of bacteria by the algal strains, and thus cannot explicitly state that phagotrophic mixotrophy did not occur during the long-term experiment.

Because glucose is channeled directly to palmitic acid (16:0) and further into lipid synthesis (Ratledge, 2004), and the cellular neutral lipid content should be at highest during the light period of the light:dark cycle (Roessler, 1990), and because the LC-PUFA content should be at highest during the stationary growth phase (Roessler, 1990; Boelen *et al.*, 2017), we expected (Hypothesis 3) that the osmotrophic uptake of glucose increases the FA content in algae. However, we did not find any specific effect of glucose on the amount of total FAs or EPA or DHA. Our PERMANOVA analysis for EPA and DHA, and the FAs related to the synthesis of these LC-PUFAs (16:0, ALA, SDA, 16 MUFA,

18 MUFA), showed that the glucose assimilation explained (35%) the concentrations of these FAs in *Cryptomonas* sp., but the effect was rather negative than positive (Fig. 2). It has been shown earlier that too high glucose concentration may inhibit growth and lipid synthesis and that the optimal glucose content is species specific (Liang, Sarkany & Cui, 2009; Wan et al., 2011). This effect was seen besides in the omega-3 in *Cryptomonas* sp. also in the total FA content in *M. kalinae*, which had lowest total FAs in the highest glucose treatment (5 mg L⁻¹).

In contrast to glucose addition, we expected that (Hypothesis 4) the leucine addition would not affect the EPA and DHA content of algae, but could boost their growth and thus simultaneously actually reduce the amount of stored FAs. However, the growth rates were not affected by leucine, and reduction in the total FAs compared to control was found only in *M. kalinae* in leucine 100 µg L⁻¹ treatment. For our surprise, in PERMANOVA, leucine assimilation explained 48% of the variation in the content of 16:0, ALA, SDA, EPA, DHA 16 MUFA and 18 MUFA of *Cryptomonas* sp., and—unlike expected—the effect of leucine was positive. Again, these results show that biochemical synthesis in algae is species specific, and that generalizations cannot be made.

We selected the glucose and leucine concentrations based on literature (Kamjunke & Tittel, 2008; Kamjunke et al., 2008), and they are in line with the dissolved organic carbon (DOC) contents of natural lakes; the DOC content in the clearwater lakes in Finland vary between 7 and 9 mg C L⁻¹ (Ojala et al., 2011; Bręk-Laitinen, López Bellido & Ojala, 2012), whereas in humic lakes the DOC values can be even higher (10–45 mg C L⁻¹; Taipale et al., 2008; Ojala et al., 2011). However, in nature the DOC consists of both recalcitrant compounds from mainly terrestrial origin and labile compounds released by algae and bacteria. Further, the labile compounds constitute of different carbohydrates, organic acids, dissolved and free amino acids, ketones and aldehydes with variable concentrations (Hellebust, 1965; Norrman et al., 1995; Peltomaa & Ojala, 2010; Dąbrowska, Nawrocki & Szelaż-Wasielewska, 2014), which makes the detection of osmotic assimilation as well as the evaluation of its effects on for example, FA synthesis challenging. In this study, we found some positive and some negative effects of osmotic assimilation on FA synthesis, but the effects were still minor in general, which agrees with the study of Galloway & Winder (2015), who reported that growth conditions account for relatively low variation in algal FAs. However, in extreme conditions, for example, during enhanced run-off (either due to climate change or seasonality) leading to higher carbon or amino acids in the water, the magnitude of the effects on LC-PUFA availability could be significant at food web level (from algae to fish; Jonasdottir, 1994; Brett et al., 2006; Peltomaa et al., 2017; Taipale et al., 2018) assuming that the LC-PUFA producers of the algal community would consist of species capable on osmotic uptake of these compounds.

CONCLUSIONS

Our experiments show that osmotic nutrition can be found in different types of algae, but the assimilation is species specific and may differ between different organic compounds, as shown here with glucose and leucine. Furthermore, the effects of these two

compounds on the algal growth and metabolism was found to be species specific: moderate glucose concentration (2 mg L^{-1}) enhanced the growth of *C. ozolinii*, whereas the growth of *M. kalinae* was enhanced by low leucine ($20 \text{ } \mu\text{g L}^{-1}$). Additionally, high glucose content (5 mg L^{-1}) affected negatively on the total FAs of *M. kalinae* and the total omega-3 FAs of *Cryptomonas* sp. In general, glucose assimilation explained 35% (negative effect) and leucine assimilation 48% (positive effect) of the variation of EPA, DHA and the FAs related to their synthesis in *Cryptomonas* sp. but not in the other algae studied. The broad spectrum of compounds and the species-specific responses of algae makes the estimation of the importance of osmotrophy challenging in planktonic food webs and natural waters in general.

ACKNOWLEDGEMENTS

The authors would like to thank the reviewers for all of their careful, constructive and insightful comments in relation to this work, Miss Paula Ilut for helping with the algal culturing and Mr. Roy Nyberg for editing the English of this manuscript.

ADDITIONAL INFORMATION AND DECLARATIONS

Funding

This work was supported by the Academy of Finland (No. 276268). The funders had no role in study design, data collection and analysis, decision to publish, or preparation of the manuscript.

Grant Disclosures

The following grant information was disclosed by the authors:
Academy of Finland: 276268.

Competing Interests

The authors declare that they have no competing interests.

Author Contributions

- Elina T. Peltomaa conceived and designed the experiments, performed the experiments, prepared figures and/or tables, authored or reviewed drafts of the paper, and approved the final draft.
- Sami Taipale analyzed the data, prepared figures and/or tables, authored or reviewed drafts of the paper, and approved the final draft.

Data Availability

The following information was supplied regarding data availability:
The raw measurements are available in the [Supplemental Files](#).

Supplemental Information

Supplemental information for this article can be found online at <http://dx.doi.org/10.7717/peerj.8363#supplemental-information>.

REFERENCES

- Beamud SG, Karrasch B, Pedrozo FL, Diaz MM. 2014. Utilisation of organic compounds by osmotrophic algae in an acidic lake of Patagonia (Argentina). *Limnology* **15**(2):163–172 DOI [10.1007/s10201-014-0427-2](https://doi.org/10.1007/s10201-014-0427-2).
- Boelen P, Van Mastrigt A, Van De Bovenkamp HH, Heeres HJ, Buma AGJ. 2017. Growth phase significantly decreases the DHA-to-EPA ratio in marine microalgae. *Aquaculture International* **25**(2):577–587 DOI [10.1007/s10499-016-0053-6](https://doi.org/10.1007/s10499-016-0053-6).
- Boëchat IG, Weithoff G, Krüger A, Gücker B, Adrian R. 2007. A biochemical explanation for the success of mixotrophy in the flagellate *Ochromonas* sp. *Limnology and Oceanography* **52**(4):1624–1632 DOI [10.4319/lo.2007.52.4.1624](https://doi.org/10.4319/lo.2007.52.4.1624).
- Bręk-Laitinen G, López Bellido J, Ojala A. 2012. Response of a microbial food web to prolonged seasonal hypoxia in a boreal lake. *Aquatic Biology* **14**(2):105–120 DOI [10.3354/ab00379](https://doi.org/10.3354/ab00379).
- Brennan PJ. 1989. Mycobacterium and other actinomycetes. In: Ratledge C, Wilkinson SG, eds. *Microbial Lipids*. Vol. 1. London: Academic Press, 203–298.
- Brett MT, Müller-Navarra DC, Ballantyne AP, Ravet JL, Goldman CR. 2006. *Daphnia* fatty acid composition reflects that of their diet. *Limnology and Oceanography* **51**(5):2428–2437 DOI [10.4319/lo.2006.51.5.2428](https://doi.org/10.4319/lo.2006.51.5.2428).
- Cavalier-Smith T. 2010. Kingdoms protozoa and chromista and the eozoan root of the eukaryotic tree. *Biology Letters* **6**(3):342–345 DOI [10.1098/rsbl.2009.0948](https://doi.org/10.1098/rsbl.2009.0948).
- Colombo SM, Wacker A, Parrish CC, Kainz MJ, Arts MT. 2017. A fundamental dichotomy in long-chain polyunsaturated fatty acid abundance between and within marine and terrestrial ecosystems. *Environmental Reviews* **25**(2):163–174 DOI [10.1139/er-2016-0062](https://doi.org/10.1139/er-2016-0062).
- Dąbrowska A, Nawrocki J, Szeląg-Wasielewska E. 2014. Appearance of aldehydes in the surface layer of lake waters. *Environmental Monitoring and Assessment* **186**(7):4569–4580 DOI [10.1007/s10661-014-3720-y](https://doi.org/10.1007/s10661-014-3720-y).
- Flynn KJ, Stoecker DK, Mitra A, Raven JA, Glibert PM, Hansen PJ, Granéli E, Burkholder JM. 2013. Misuse of the phytoplankton–zooplankton dichotomy: the need to assign organisms as mixotrophs within plankton functional types. *Journal of Plankton Research* **35**(1):3–11 DOI [10.1093/plankt/fbs062](https://doi.org/10.1093/plankt/fbs062).
- Galloway AWE, Winder M. 2015. Partitioning the relative importance of phylogeny and environmental condition on phytoplankton fatty acids. *PLOS ONE* **10**(6):e0130053 DOI [10.1371/journal.pone.0130053](https://doi.org/10.1371/journal.pone.0130053).
- Guillard RRL, Lorenzen CJ. 1972. Yellow-green algae with chlorophyllide C. *Journal of Phycology* **8**:10–14.
- Hellebust JA. 1965. Excretion of some organic compounds by marine phytoplankton. *Limnology and Oceanography* **10**(2):192–206 DOI [10.4319/lo.1965.10.2.0192](https://doi.org/10.4319/lo.1965.10.2.0192).
- Jonasdóttir SH. 1994. Effects of food quality on the reproductive success of *Acartia tonsa* and *Acartia hudsonica*: laboratory observations. *Marine Biology* **121**(1):67–81 DOI [10.1007/BF00349475](https://doi.org/10.1007/BF00349475).
- Kamjunke N, Köhler B, Wannicke N, Tittel J. 2008. Algae as competitors for glucose with heterotrophic bacteria. *Journal of Phycology* **44**(3):616–623 DOI [10.1111/j.1529-8817.2008.00520.x](https://doi.org/10.1111/j.1529-8817.2008.00520.x).
- Kamjunke N, Tittel J. 2008. Utilisation of leucine by several phytoplankton species. *Limnologica* **38**(3–4):360–366 DOI [10.1016/j.limno.2008.05.002](https://doi.org/10.1016/j.limno.2008.05.002).
- Kohli GS, John U, Van Dolah FM, Murray SA. 2016. Evolutionary distinctiveness of fatty acid and polyketide synthesis in eukaryotes. *ISME Journal* **10**(8):1877–1890 DOI [10.1038/ismej.2015.263](https://doi.org/10.1038/ismej.2015.263).

- Liang Y, Sarkany N, Cui Y. 2009. Biomass and lipid productivities of *Chlorella vulgaris* under autotrophic, heterotrophic and mixotrophic growth conditions. *Biotechnology Letters* 31(7):1043–1049 DOI 10.1007/s10529-009-9975-7.
- Mühlroth A, Li K, Røkke G, Winge P, Olsen Y, Hohmann-Marriott MF, Vadstein O, Bones A. 2013. Pathways of lipid metabolism in marine algae, co-expression network, bottlenecks and candidate genes for enhanced production of EPA and DHA in species of chromista. *Marine Drugs* 11(11):4662–4697 DOI 10.3390/md11114662.
- Norrman B, Zwiefel UL, Hopkinson CS, Fry B. 1995. Production and utilization of dissolved organic carbon during an experimental diatom bloom. *Limnology and Oceanography* 40(5):898–907 DOI 10.4319/lo.1995.40.5.0898.
- North BB, Stephens GC. 1972. Amino acid transport in *Nitzschia ovalis* Arnott. *Journal of Phycology* 8:64–68.
- Ojala A, López Bellido J, Tulonen T, Kankaala P, Huotari J. 2011. Carbon gas fluxes from a brown-water and a clear-water lake in the boreal zone during a summer with extreme rain events. *Limnology and Oceanography* 56(1):61–76 DOI 10.4319/lo.2011.56.1.0061.
- Parrish CC. 1999. Determination of total lipid, lipid classes, and fatty acids in aquatic samples. In: Arts MT, Wainman BC, eds. *Lipids in Freshwater Ecosystems*. New York: Springer, 4–20.
- Peltomaa ET, Aalto SL, Vuorio KM, Taipale SJ. 2017. The importance of phytoplankton biomolecule availability for secondary production. *Frontiers in Ecology and Evolution* 5:128 DOI 10.3389/fevo.2017.00128.
- Peltomaa E, Ojala A. 2010. Size-related photosynthesis of algae in a strongly stratified humic lake. *Journal of Plankton Research* 32(3):341–355 DOI 10.1093/plankt/fbp123.
- Ratledge C. 2004. Fatty acid biosynthesis in microorganisms being used for single cell oil production. *Biochimie* 86(11):807–815 DOI 10.1016/j.biochi.2004.09.017.
- Rengefors K, Pålsson C, Hansson LA, Heiberg L. 2008. Cell lysis of competitors and osmotrophy enhance growth of the bloom-forming alga *Gonyostomum semen*. *Aquatic Microbial Ecology* 51:87–96 DOI 10.3354/ame01176.
- Roessler PG. 1990. Environmental control of glycerolipid metabolism in microalgae: commercial implications and future research directions. *Journal of Phycology* 26(3):393–399 DOI 10.1111/j.0022-3646.1990.00393.x.
- Ruiz-González C, Galí M, Sintes E, Herndl GJ, Gasol JM, Simó R. 2012. Sunlight effects on the osmotrophic uptake of DMSP-sulfur and leucine by polar phytoplankton. *PLOS ONE* 7(9):e45545 DOI 10.1371/journal.pone.0045545.
- Schmidt S, Raven JA, Paungfoo-Lonhienne C. 2013. The mixotrophic nature of photosynthetic plants. *Functional Plant Biology* 40(5):425–438 DOI 10.1071/FP13061.
- Taipale SJ, Hiltunen M, Vuorio K, Peltomaa E. 2016. Suitability of phytosterols alongside fatty acids as chemotaxonomic biomarkers for phytoplankton. *Frontiers in Plant Science* 7:225 DOI 10.3389/fpls.2016.00212.
- Taipale SJ, Kahilainen KK, Holtgrieve GW, Peltomaa ET. 2018. Simulated eutrophication and browning alters zooplankton nutritional quality and determines juvenile fish growth and survival. *Ecology and Evolution* 8(5):2671–2687 DOI 10.1002/ece3.3832.
- Taipale S, Kankaala P, Tirola M, Jones RI. 2008. Whole-lake DI13C additions reveal seasonal shifts between multiple food source contributions to zooplankton diet. *Ecology* 89(2):463–474 DOI 10.1890/07-0702.1.
- Taipale SJ, Peltomaa E, Hiltunen M, Jones RI, Hahn MW, Biasi C, Brett MT. 2015. Inferring phytoplankton, terrestrial plant and bacteria bulk $\delta^{13}\text{C}$ values from compound specific analyses of lipids and fatty acids. *PLOS ONE* 10(7):e0133974 DOI 10.1371/journal.pone.0133974.

- Tittel J, Wiehle I, Wannicke N, Kampe H, Poerschmann J, Meier J, Kamjunke N. 2009.** Utilisation of terrestrial carbon by osmotrophic algae. *Aquatic Sciences* **71**(1):46–54 DOI [10.1007/s00027-008-8121-2](https://doi.org/10.1007/s00027-008-8121-2).
- Wan M, Liu P, Xia J, Rosenberg JN, Oyler GA, Betenbaugh MJ, Nie Z, Qiu G. 2011.** The effect of mixotrophy on microalgal growth, lipid content, and expression levels of three pathway genes in *Chlorella sorokiniana*. *Applied Microbiology and Biotechnology* **91**(3):835–844 DOI [10.1007/s00253-011-3399-8](https://doi.org/10.1007/s00253-011-3399-8).
- Watanabe MM, Kawachi M, Hiroki M, Kasai F. 2000.** *NIES collection list of strains*. Sixth Edition. Tsukuba: National Institute for Environmental Studies, 159.
- Wheeler PA, North BB, Stephens GC. 1974.** Amino acid uptake by marine phytoplankters. *Limnology and Oceanography* **19**(2):249–259 DOI [10.4319/lo.1974.19.2.0249](https://doi.org/10.4319/lo.1974.19.2.0249).
- Willén T. 1962.** Studies on the phytoplankton of some lakes connected with or recently isolated from the Baltic. *Oikos* **13**(2):169–199 DOI [10.2307/3565084](https://doi.org/10.2307/3565084).
- Yoo YD, Seong KA, Jeong HJ, Yih W, Rho JR, Nam SW, Kim HS. 2017.** Mixotrophy in the marine red-tide cryptophyte teleaulax amphioxeia and ingestion and grazing impact of cryptophytes on natural populations of bacteria in Korean coastal waters. *Harmful Algae* **68**:105–117 DOI [10.1016/j.hal.2017.07.012](https://doi.org/10.1016/j.hal.2017.07.012).