



Genetic and morphological analyses indicate that the Australian endemic scorpion *Urodacus yaschenkoi* (Scorpiones: Urodacidae) is a species complex

Karen Luna-Ramirez¹, Adam D. Miller³ and Gordana Rašić²

¹ Museum Victoria, Melbourne, Victoria, Australia

² Melbourne, Victoria, Australia

³ Centre for Integrative Ecology, School of Life and Environmental Sciences, Deakin University, Victoria, Australia

ABSTRACT

Background. Australian scorpions have received far less attention from researchers than their overseas counterparts. Here we provide the first insight into the molecular variation and evolutionary history of the endemic Australian scorpion *Urodacus yaschenkoi*. Also known as the inland robust scorpion, it is widely distributed throughout arid zones of the continent and is emerging as a model organism in biomedical research due to the chemical nature of its venom.

Methods. We employed Bayesian Inference (BI) methods for the phylogenetic reconstructions and divergence dating among lineages, using unique haplotype sequences from two mitochondrial loci (*COXI*, *16S*) and one nuclear locus (*28S*). We also implemented two DNA taxonomy approaches (GMYC and PTP/dPTP) to evaluate the presence of cryptic species. Linear Discriminant Analysis was used to test whether the linear combination of 21 variables (ratios of morphological measurements) can predict individual's membership to a putative species.

Results. Genetic and morphological data suggest that *U. yaschenkoi* is a species complex. High statistical support for the monophyly of several divergent lineages was found both at the mitochondrial loci and at a nuclear locus. The extent of mitochondrial divergence between these lineages exceeds estimates of interspecific divergence reported for other scorpion groups. The GMYC model and the PTP/bPTP approach identified major lineages and several sub-lineages as putative species. Ratios of several traits that approximate body shape had a strong predictive power (83–100%) in discriminating two major molecular lineages. A time-calibrated phylogeny dates the early divergence at the onset of continental-wide aridification in late Miocene and Pliocene, with finer-scale phylogeographic patterns emerging during the Pleistocene. This structuring dynamics is congruent with the diversification history of other fauna of the Australian arid zones.

Discussion. Our results indicate that the taxonomic status of *U. yaschenkoi* requires revision, and we provide recommendations for such future efforts. A complex evolutionary history and extensive diversity highlights the importance of conserving *U. yaschenkoi* populations from different Australian arid zones in order to preserve patterns of endemism and evolutionary potential.

Submitted 27 July 2016
Accepted 5 November 2016
Published 17 January 2017

Corresponding author
Gordana Rašić,
rasic.gordana@gmail.com

Academic editor
Jane Hughes

Additional Information and
Declarations can be found on
page 16

DOI 10.7717/peerj.2759

© Copyright
2017 Luna-Ramirez et al.

Distributed under
Creative Commons CC-BY 4.0

OPEN ACCESS

Subjects Biogeography, Evolutionary Studies, Taxonomy

Keywords Phylogeography, Australian scorpion, Cryptic species, *COXI*, *16S* and *28S* rRNA, Morphology

INTRODUCTION

Scorpions represent an ancient arthropod lineage that first appeared in the Silurian, and fossil records indicate their bodyplan remained largely unchanged since the Paleozoic period (Dunlop, 2010; Jeram, 1997; Kjellesvig-Waering, 1986). Given this relative morphological stasis over long periods of time, the placement of scorpions within Arachnida and internal evolutionary relationships inferred solely from morphological characters have long been contentious (Prendini & Wheeler, 2005; Sharma et al., 2014; Shultz, 2007; Sologlad & Fet, 2003). A recent phylogenomic study based on the transcriptome-wide variation suggested non-monophyly of all scorpion superfamilies and several families, largely contradicting the traditional morphology-based hypotheses (Sharma et al., 2015).

The well-supported phylogenetic reconstructions and taxonomy of scorpions are critical for their effective conservation. Scorpion populations can be sensitive to environmental changes due to a low reproductive rate (long generation time, long gestation time, small litter size) and high mortality of immature females (Fet, Polis & Sissom, 1998; Lourenço & Cuellar, 1995). Several species have gained threatened status due to over-harvesting for the souvenir and exotic pet trades (Convention on International Trade in Endangered Species of Wild Fauna and Flora, 2014, <http://www.cites.org/eng/app/appendices.php>). Scorpions might also become more harvested for their venom that is increasingly regarded as a source of new therapeutic and insecticidal agents (Gurevitz et al., 2007; Possani et al., 2000; Rodríguez de la Vega, Schwartz & Possani, 2010). An extensive venom characterization can be found for individual taxa (e.g., Luna-Ramírez et al., 2013; Xu et al., 2014), but a deeper understanding of the evolution of scorpion venoms and their molecular characteristics has been limited by the lack of underlying species tree (Sharma et al., 2015).

Extant scorpions inhabit a diversity of terrestrial habitats across all continents except Antarctica, with the greatest species diversity found in tropical and subtropical regions of the world (Lourenço, 2001; Prendini, 2010). Australian scorpions have received far less attention from researchers than their overseas counterparts. Over 40 scorpion species described in Australia are traditionally organized into four families: Buthidae, Bothriuridae, Urodacidae and Hormuridae (Koch, 1977; Monod & Prendini, 2015; Volschenk, Mattoni & Prendini, 2008). The Urodacidae is an Australian endemic family found across the continent, except on the south-eastern seaboard. The family was first described by Koch (1977) that under the current classification includes two genera: *Urodacus* and the recently described troglobitic *Aops* (Volschenk & Prendini, 2008). The genus *Urodacus* contains 20 species described based on morphological characters (Volschenk, Harvey & Prendini, 2012), with many likely undescribed species.

Urodacus yaschenkoi (Birula, 1903), commonly known as the inland robust scorpion, occupies Australian desert habitats stretching from north-western Victoria through South Australia and across to Western Australia (Walker, Yen & Milledge, 2003) (Fig. 1). It is emerging as a model organism in toxinology because it produces large volumes of venom compared with other *Urodacus* species (Luna-Ramírez et al., 2013; Luna-Ramírez et al., 2014). This scorpion has had several synonyms throughout its taxonomic history, starting from the original description as *Hemihoplopous yaschenkoi* (Birula, 1903), followed

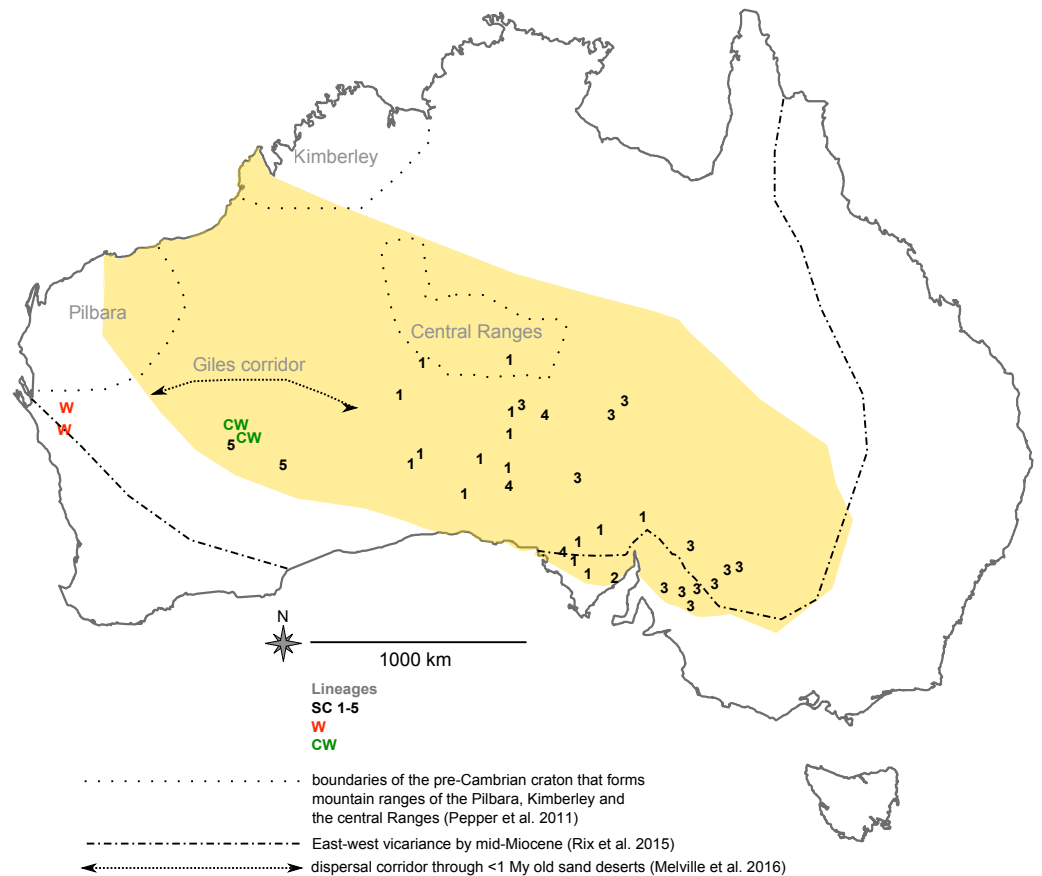


Figure 1 *Urodacus yaschenkoi* sampling locations across its distribution range (in dark yellow, adapted from Koch, 1977). Numbers 1 to 5 designate individuals belonging to the sub-lineages (SC1-5) of the south-central major clade (SC); members of the central-western (CW) clade and western (W) clades are marked in green and red color, respectively. Different hypotheses about diversification in various Australian taxa (vicariance, refugia, dispersal corridors) are adapted from Melville et al. (2016), Pepper et al. (2011) and Rix et al. (2015).

by *Urodacus granifrons* (Kraepelin, 1916), *U. fossor* (Kraepelin, 1916), and *U. kraepelini* (Glauert, 1963), and finally by *U. yaschenkoi* (Birula) (Koch, 1977). Since then, studies of variation in *U. yaschenkoi* populations have not been conducted.

Here we provide the first molecular analysis of phylogenetic patterns and history of *U. yaschenkoi* sampled across its native range. DNA sequence data from mitochondrial and nuclear loci, complemented with the analysis of several body-proportion characters, showed that *U. yaschenkoi* shares a complex diversification history with other Australian arid-adapted fauna. Moreover, the existence of several deeply divergent lineages that also differ in body-shape indicate that further revision of this taxon is warranted.

MATERIALS AND METHODS

Biological material

Samples of *Urodacus yaschenkoi* were obtained from field and museum collections (Table 1). Live specimens were collected from eight locations (approximately 500 m²) in the semi-arid

Table 1 *Urodacus yaschenkoi* specimen location and analyses made. List of *Urodacus yaschenkoi* collected from the field as live specimens (Field) or obtained from the Australian museum collections (South Australian Museum—SA, Western Australian Museum—WA). Geographic position (lat/log) and the geographic region details are reported for each sample. List of haplotypes (mito 28S) and GenBank Accession # scored in each individual. Morphological variation scored (✓), Museum ID.

Sample	Source	Latitude	Longitude	Geographic region	Mito haplotype	28S haplotype	GenBank (mito/28S)	Morpho	Museum ID/Reg.No.
BKA11	Field	−33.2283	141.3011	NSW	20	1	KP176775/ KP176743		NA
BKA12	Field	−33.2283	141.3011	NSW	20	2	KP176775/ KP176744		NA
BKB08	Field	−33.2199	141.3089	NSW	20	1			NA
BKB12	Field	−33.2242	141.3061	NSW	20	1	KP176775/ KP176743		NA
BK13	Field	−33.2283	141.3011	NSW	20	1			NA
MARR1	Field	−26.3400	133.2000	SA	28	3	KP176783/ KP176745		NA
MARR2	Field	−26.3400	133.2000	SA	28	3	KP176783/ KP176745		NA
PIM1	Field	−31.2509	136.5089	SA	1	4	KP176756/ KP176746		NA
PIM2	Field	−31.2509	136.5089	SA	1	5	KP176756/ KP176747		NA
PIM5	Field	−31.2509	136.5089	SA	1	4	KP176756/ KP176746		NA
PIM6	Field	−31.2509	136.5089	SA	1	1	KP176756/ KP176743		NA
PIM8	Field	−31.2509	136.5089	SA	1	1	KP176756/ KP176743		NA
POP1	Field	−33.0710	141.6372	NSW	20	1	KP176775/ KP176743		NA
POP4	Field	−33.0710	141.6372	NSW	20	–	KP176775		NA
POP5	Field	−33.0710	141.6372	NSW	20	–	KP176775		NA
SAM1397	SAM	−30.7667	138.1767	SA	2	–	KP176757	✓	NS1397
SAM1399	SAM	−27.1192	132.8300	SA	6	–	KP176761	✓	NS1399
SAM1400	SAM	−27.1191	132.8300	SA	6	–	KP176761	✓	NS1400
SAM1403	SAM	−26.6453	132.8858	SA	4	–	KP176759	✓	NS1403
SAM1406	SAM	−31.2878	136.5831	SA	1	–	KP176756	✓	NS1406
SAM1412	SAM	−26.2747	137.3269	SA	20	–	KP176775	✓	NS1412
SAM1415	SAM	−33.8555	140.5361	SA	20	–	KP176775	✓	NS1415
SAM1416	SAM	−34.0583	140.1500	SA	20	–	KP176775	✓	NS1416
SAM1606	SAM	−26.6922	134.1722	SA	23	–	KP176778		NS1606
SAM1607	SAM	−26.5767	137.1933	SA	22	–	KP176777		NS1607
SAM1812	SAM	−33.3267	137.0931	SA	15	–	KP176770	✓	NS1812
SAM1823	SAM	−33.7511	140.2747	SA	20	–	KP176775	✓	NS1823
SAM1825	SAM	−33.7230	140.1238	SA	20	–	KP176775	✓	NS1825
SAM1831	SAM	−33.7183	139.9300	SA	20	–	KP176775	✓	NS1831

(continued on next page)

Table 1 (continued)

Sample	Source	Latitude	Longitude	Geographic region	Mito haplotype	28S haplotype	GenBank (mito/28S)	Morpho	Museum ID/Reg.No.
SAM1834	SAM	-33.7236	139.0438	SA	20	-	KP176775	✓	NS1834
SAM1835	SAM	-33.7236	139.0438	SA	21	-	KP176776	✓	NS1835
SAM1837	SAM	-33.7400	139.0816	SA	20	-	KP176775	✓	NS1837
SAM1917	SAM	-32.6244	135.0322	SA	24	-	KP176779	✓	NS1917
SAM1939	SAM	-33.1233	136.0214	SA	3	-	KP176758	✓	NS1939
SAM2038	SAM	-33.1167	136.0000	SA	3	-	KP176758	✓	NS2038
SAM2053	SAM	-24.4036	132.8886	NT	14	-	KP176769	✓	NS2053
SAM2054	SAM	-28.4627	129.0102	SA	5	-	KP176760	✓	NS2054
SAM2055	SAM	-28.4627	129.0102	SA	5	-	KP176770	✓	NS2055
SAM2056	SAM	-28.4627	129.0102	SA	10	-	KP176765	✓	NS2056
SAM2060	SAM	-28.4977	129.3205	SA	11	-	KP176766	✓	NS2060
SAM2061	SAM	-28.4977	129.3205	SA	11	-	KP176766	✓	NS2061
SAM2062	SAM	-24.5060	129.2619	NT	9	-	KP176764	✓	NS2062
SAM2067	SAM	-32.0033	135.6558	SA	3	-	KP176758		NS2067
SAM2070	SAM	-28.8969	132.7575	SA	12	-	KP176767	✓	NS2070
SAM2071	SAM	-28.8969	132.7575	SA	13	-	KP176768	✓	NS2071
SAM2073	SAM	-28.5319	131.6903	SA	19	-	KP176774		NS2073
SAM2076	SAM	-29.7706	131.1081	SA	18	-	KP176773		NS2076
SAM2120	SAM	-31.9972	140.0644	SA	20	-	KP176775	✓	NS2120
SAM2125	SAM	-29.1286	135.6997	SA	25	-	KP176780	✓	NS2125
SAM2126	SAM	-29.1286	135.6997	SA	20	-	KP176775		NS2126
SAM2133	SAM	-32.4947	135.3644	SA	7	-	KP176762	✓	NS2133
SAM2140	SAM	-29.4053	132.8556	SA	26	-	KP176781	✓	NS2140
WAM20	WAM	-27.4867	122.3119	WA	31	7	KP176786/ KP176749	✓	85020
WAM31	WAM	-27.4867	122.3119	WA	31	8	KP176786/ KP176750	✓	85031
WAM32	WAM	-27.4867	122.3119	WA	30	8	KP176785/ KP176750	✓	85032
WAM36	WAM	-27.3893	115.1847	WA	29	9	KP176784/ KP176751		78236
WAM37	WAM	-27.6145	121.9947	WA	17	10	KP176772/ KP176752		112637
WAM38	WAM	-26.4408	115.3661	WA	29	9	KP176784/ KP176751		78238
WAM46	WAM	-28.7333	123.8667	WA	16	11	KP176771/ KP176753		80246
WAM55	WAM	-27.4867	122.3119	WA	31	7	KP176786/ KP176749	✓	83855
WAM56	WAM	-27.4867	122.3119	WA	30	7	KP176785/ KP176749	✓	83856
WAM75	WAM	-27.4867	122.3119	WA	31	12	KP176786/ KP176754	✓	83875

(continued on next page)

Table 1 (continued)

Sample	Source	Latitude	Longitude	Geographic region	Mito haplotype	28S haplotype	GenBank (mito/28S)	Morpho	Museum ID/Reg.No.
WAM88	WAM	−25.9307	128.4526	WA	8	13	KP176763/ KP176755		95988
Um1814	SAM	−33.1997	138.2189	SA	NA	NA			NS0001814
Um2714	SAM	−33.1997	138.2189	SA	NA	NA			NS0002714
Un2112	SAM	−31.6597	129.1083	SA	NA	NA			NS0002112

Notes.

NSW, New South Wales; SA, South Australia; WA, Western Australia; NT, Northern Territory; NA, Not applicable.

and arid regions of Central Australia in December 2010 and October 2011 (Table 1 and Fig. 1). Individuals were collected at night from pitfall traps set in front of their burrows, and those outside their burrows were detected using ultraviolet (UV) lamps that reveal soluble fluorescent components (β -carboniles) in the scorpion exoskeleton (Stachel, Stockwell & Van Vranken, 1999). Captured scorpions were kept alive and transported to the laboratory for morphological identification according to Koch (1977). Key diagnostic feature that distinguishes *U. yaschenkoi* from other *Urodacus* species is a very small terminal prolateral tarsus unguis. All specimens were handled according to good animal practices defined by the Government of Australia, and all institutions and museums involved approved the animal handling work. Scorpions were anaesthetized by cooling in a refrigerator (4 °C) for 5 min before removing ~1 mm² of leg muscle tissue, which was stored in 90% ethanol at 4 °C or −20 °C for subsequent DNA extraction. Additional samples were obtained from collections at the South Australian Museum (SAM) and Western Australian Museum (WAM) containing specimens collected between 2000 and 2010 (Table 1).

DNA extraction, amplification and sequencing

Total DNA was extracted from the stored muscle tissue using the DNeasy Blood and Tissue Kit (Qiagen, Venlo, Netherlands) following the manufacturer's instructions. Two mitochondrial loci (cytochrome oxidase subunit I, *COXI*; large ribosomal subunit, *16S*) and a single nuclear locus (28S) were amplified by PCR with a reaction volume of 20 μ l containing 0.5 ng of template DNA, 10 μ l of Go Taq Master Mix (Promega, Madison, Wisconsin, USA), 0.5 μ l of 10 nM primers and 7 μ l of RNase-free water (Qiagen). The primer sequences and PCR amplicon sizes are summarized in Table 2.

Primers previously designed for the insect *COXI* gene (Simon et al., 1994; Tanaka et al., 2001) were used to amplify a 630-base pair (bp) fragment from the 3' end of the locus. The amplification conditions comprised an initial denaturing step at 95 °C for 5 min followed by 35 cycles of denaturing at 94 °C for 30 s, annealing at 52 °C for 40 s, and extension at 72 °C for 45 s, and a final extension phase at 72 °C for 5 min. For the mitochondrial *16S* gene, the scorpion-specific primer pairs modified by Gantenbein et al. (2005) were used to amplify a 425-bp region at the 3' end of the locus. The amplification conditions comprised an initial denaturing step at 94 °C for 4 min followed by 30 cycles of denaturing at 94 °C for 30 s, annealing at 47.5 °C for 30 s, and extension at 72 °C for 30 s, and a final extension phase at 72 °C for 7 min. The *COXI* and *16S* gene fragments were also amplified from three specimens keyed out as *Urodacus manicatus* (Um2714, Um1814) and *U. novaehollandiae*

Table 2 Primer and amplicon details. List of primer sequences and corresponding amplicons sizes for the three *Urodacus yaschenkoi* loci (*COXI*, *16S* rRNA, *28S* rRNA).

Marker	Primer	Primer sequence	Size (bp)	Reference
<i>COXI</i>	F C1-J-2183	5'-CAACATTTATTTTGATTTTGG - 3'	550–630	<i>Simon et al. (1994)</i>
	R COXIKG-R2	5'- GATATTAATCCTAAAAAATGTTGAGG-3'		<i>Tanaka et al. (2001)</i>
<i>COXI</i>	Nested F	5'-AGGAACCTTTTGGGGCTTT-3'	150	
<i>COXI</i>	Nested R	5'-AGGAACCTTTTGGGGCTTT-3'		
<i>16S</i>	F 16SF	5'- AACAAAACCCACAGCTCACA- 3'	422	<i>Gantenbein et al. (2005)</i>
	R 16SR	5'- GTGCAAAGGTAGCATAATCA- 3'		
<i>28S</i>	R1	F R1S (5'-ACCCGCTGAATTTAAGCAT-3'), R R1AS (5'- GCTATCCTGAGGGAAACTTC-3')	1,158	<i>Arabi et al. (2012)</i>
	R2	F R2S (5'-CGACCCGTCTTGAAACACGGA-3'), R R2AS (5'-CACCTTGGAGACCTGCTGCGGAT-3')	1,246	

(Un2112, [Table 1](#)). Sequences from these taxa were used as outgroups in downstream phylogenetic reconstruction. Primer pairs R1S and R1AS, and R2S and R2AS, designed by [Arabi et al. \(2012\)](#), were used to amplify 1,158-bp and 1,246-bp fragments of the *28S* locus, respectively. Each set of primers amplifies a different region of the gene, which overlaps by 327 bp, and their sequences were concatenated to form a larger product of 2,076 bp. The amplification conditions for both sets of primers comprised an initial denaturing step at 94 °C for 4 min, followed by 30 cycles of denaturing at 94 °C for 30 s, annealing at 55 °C for 30 s, and extension at 72 °C for 30 s, and a final extension phase at 72 °C for 7 min.

Museum specimens that were not stored under ideal conditions for preservation failed to yield *COXI* amplicons suitable for direct sequencing. To address this issue, additional PCR primers were designed to amplify smaller fragments for *COXI* locus ([Table 2](#)), resulting in amplicons of 150 bp that were used for subsequent analysis. For the SAM specimens, the amplification of the *28S* nuclear gene failed entirely and these samples were excluded from further analysis of the nuclear gene variation. All amplicons were sequenced in both directions using the PCR amplification primers, and carried out on an Applied Biosystems 3130 genetic analyzer by Macrogen Inc. (Seoul, South Korea).

Sequences were aligned and edited in Geneious Pro v6.1 (Biomatters Ltd.) using the MUSCLE alignment option with default parameters. All chromatograms were checked for the presence of multiple peaks (which indicate heterozygosity), and authenticity of the *COXI* coding gene was validated by checking for indels and premature stop codons. After this editing process, the alignment of the mitochondrial gene fragments yielded 616-bp and 396-bp products for the *COXI* and *16S* genes respectively, and the final *28S* alignment was 2,076 bp in length. The final dataset contained 68 sequences for each of the mitochondrial genes and 27 sequences for the *28S* locus ([Table 1](#), (GenBank accession # [KP176717–KP176786](#))). Shared haplotypes were identified and the uncorrected pairwise genetic distances (%) were calculated using Geneious Pro v6.1 (Biomatters Ltd.). This simple distance measure was implemented to achieve reliable estimates of both intraspecific and interspecific genetic variation.

Phylogenetic analysis

Phylogenetic reconstructions and divergence dates among lineages were calculated using unique haplotypes and Bayesian Inference (BI) methods implemented in BEAST v2.1.3 (Bouckaert *et al.*, 2014). We used jModeltest v0.1.1 (Posada, 2008) to select the best-fit model of evolution, based on Akaike Information Criteria (AIC) (Akaike & Company, 1981) for each of the mitochondrial and nuclear genes (GTR + G in each case). Mitochondrial loci were combined for analysis due to their similar modes of evolution (GTR + R), as indicated by the incongruence-length difference (ILD) tests (Farris *et al.*, 1995) implemented in PAUP_4.0b10 (Swofford, 2002). The nuclear gene (28S) was analyzed independently due to inconsistencies in taxon sampling (Table 1).

Operators were auto-optimized, and five independent Markov Chain Monte Carlo (MCMC) runs were performed using a Yule (speciation) tree-prior, each running for 5×10^6 generations, sampling every 10,000 states. Log files were examined with Tracer v1.5 (Rambaut *et al.*, 2014) to ensure that runs were sampling from the same posterior distribution, to determine appropriate burn-in, and to ensure that effective sample sizes (ESSs) of parameters of interest were greater than 1,000. Tree files of independent runs were then combined using LogCombiner v2.1.3 (Drummond *et al.*, 2012), discarding the first 20% and re-sampling at a lower frequency of 15,000. The maximum clade credibility (MCC) tree was recovered from a sample of 10,000 posterior trees, and branch support was annotated using TreeAnnotator v2.1.3 (Drummond *et al.*, 2012). Each analysis started with a random starting tree and seed with no root specified. Sequence data from species of the same genus (*U. manicatus* and *U. novaehollandiae*) were used to estimate the root of the mitochondrial gene tree.

Additional phylogenetic constructions were also performed using a truncated *COXI* alignment to test the influence of missing data on the final tree topology. Because numerous museum collections yielded short *COXI* gene products, we trimmed the alignment to 150-bp to exclude regions of the alignment with high levels of missing data. This exercise demonstrated that the inclusion/exclusion of missing data had little influence on the phylogenetic reconstructions. Consequently, all results presented from this point reflect those from the non-truncated *COXI* alignment.

Species delineation based on molecular data

We implemented two DNA taxonomy approaches to evaluate the presence of cryptic species. First, the general mixed Yule coalescent (GMYC) approach (Fujisawa & Barraclough, 2013; Pons *et al.*, 2006) was applied to an ultrametric tree (produced using BEAST) in *R Development Core Team* (2008) with the Splits package (<http://splits.r-forge.r-project.org>). The GMYC model is a process-based approach that detects the threshold in a gene tree at which within-species processes (i.e., coalescence) shift to between-species processes (i.e., speciation and extinction). Second, we combined the Poisson Tree Processes model for species delimitation (PTP) and a Bayesian implementation of PTP (bPTP) to infer putative species boundaries on a given phylogenetic input tree (Zhang *et al.*, 2013). The PTP/bPTP model, unlike the GMYC model, requires a bifurcated phylogenetic tree rather than an ultrametric tree. PTP/dPTP models speciation or branching events in terms of the number of substitutions. The following parameters were used: MCMC, 500,000

generations; thinning, 100; burn-in, 0.1; seed, 123, and assessed convergence in each case to ensure the reliability of the results.

Delineation based on the analyses of morphological measurements

Proportions of several characters that approximate body shape were assessed in 39 female adult specimens that were keyed out as *U. yaschenkoi* (according to [Koch, 1977](#)) and were collected at 26 locations ([Table 1](#), [Fig. 1](#)). Gender was determined by examining the genital opercula of adult scorpions, with males having a small finger-like projection known as the genital papilla. Because our collection contained only three males, the analyses were done only with females.

The following traits were measured under a microscope using an ocular ruler with 1-mm precision: carapace length (CL), metasoma segment V length (MVL), telson length (SL), pedipalp length (PL), chela length (ChL), pecten length (PecL) and pecten width (PecW). Ratios of traits (e.g., CL/MVL, SL/PL etc.) gave in total 21 variables scored in each individual ([Supplemental File 4](#)). These variables were treated as predictors in the Linear Discriminant Analysis (LDA) implemented in the R package “MASS” ([Venables & Ripley, 2002](#)). LDA was used to test whether the linear combination of 21 variables (ratios of morphological measurements) can predict individual’s membership to a mitochondrial lineage (putative species). Strong predictive power of morphological variation on the observed molecular divergence would provide additional support for a species complex in *U. yaschenkoi*.

Divergence time estimation

The mitochondrial gene tree was time calibrated with divergence times of nodes inferred from 95% highest posterior density (HPD) intervals. Scorpion-specific mutation rates of 0.007 substitutions/site/million years for *COXI* and 0.005 substitutions/site/million years for *16S* ([Gantenbein et al., 2005](#); [Gantenbein & Largiadèr, 2003](#)) were used to calibrate the tree. These estimates are derived from buthid scorpions and have been used to estimate divergence times among various scorpion lineages including non-buthid taxa ([Bryson et al., 2013a](#); [Bryson et al., 2013b](#); [Graham, Oláh-Hemmings & Fet, 2012](#)). Substitution rates were set in BEAUti v1.7.3 ([Drummond et al., 2012](#)) using relaxed clock log normal priors. Tracer was then used to obtain parameter estimates for time to most recent common ancestor (tMRCAs) for nodes within the gene tree.

RESULTS

We identified 31 unique mitochondrial haplotypes with uncorrected distances between haplotypes ranging from 0.3–7.6% (mean \pm standard deviation = 3.0% \pm 0.4%) and distances from the outgroup taxa of 8.4–10.2% (mean \pm standard deviation = 9.4% \pm 1.4%) ([Supplemental File 1](#)). A total of 13 nuclear 28S haplotypes were identified with uncorrected *p*-distances of 0.1–0.5% (mean \pm standard deviation = 0.2% \pm 0.1%) ([Supplemental File 2](#)). A list of haplotypes for sample locations is provided in [Supplemental File 3](#).

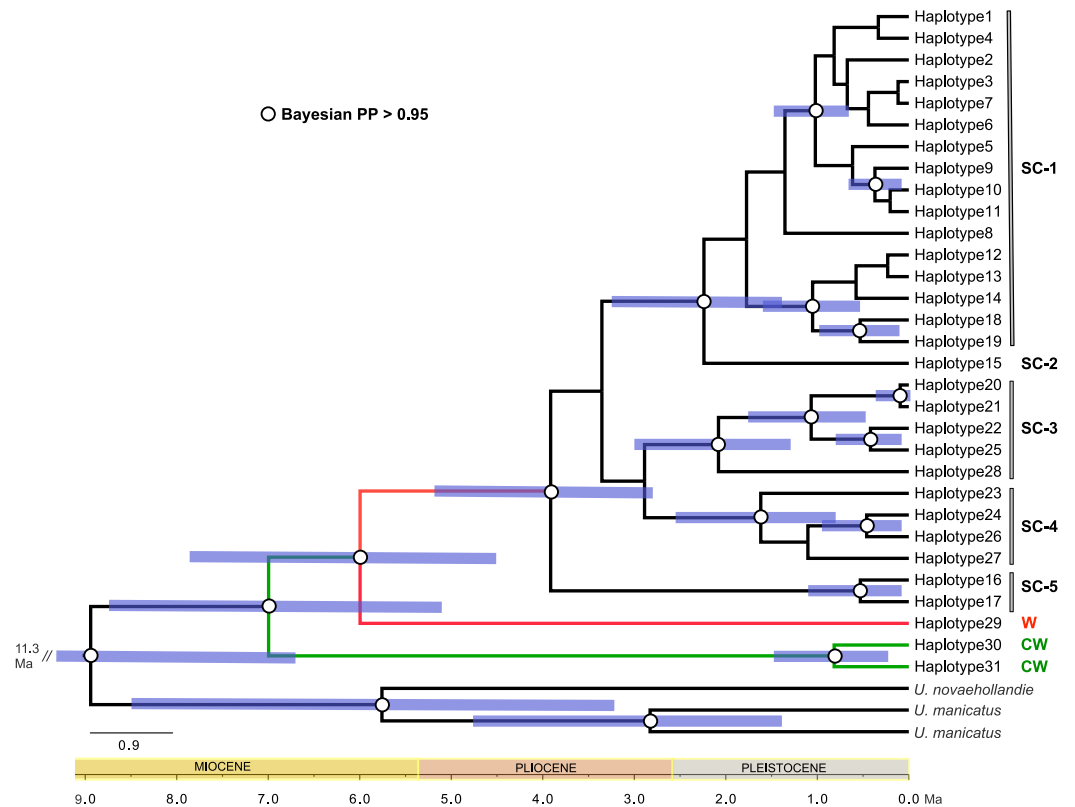


Figure 2 Dated phylogeny (Bayesian tree) for *Urodacus yaschenkoi* based on the concatenated *COXI* and *16S* partial sequences. Putative species inferred with the PTP/bPTP approach are marked as SC1-5, CW and W. The 95% CI for each divergence time is shown in blue.

Phylogenetic analysis

Mitochondrial markers

Bayesian inference analysis of the mitochondrial dataset identified several genetically divergent lineages (three major lineages represented as black, red and green clades in Fig. 2), with strong statistical support for their respective monophyly (posterior probability > 0.95). Sublineages within the black clade are broadly distributed across Victoria, South Australia and Western Australia, whereas the red and green clades are restricted to Western Australia (Fig. 1). From this point forward we will refer to the black, red and green clades as the south-central (SC), western (W) and central-western (CW) lineages, respectively.

Mean uncorrected pairwise genetic distances between the three major lineages (SC, CW and W) ranged from 6.4 to 6.9% (overall mean \pm standard deviation = 6.6% \pm 0.9%). The mean sub-lineage distances ranged from 2.2% \pm 0.4% and 0.8% \pm 0.2%, respectively (not calculated for the W lineage due to only a single recorded haplotype). Mean uncorrected distances between the three major lineages and the outgroups ranged from 9.3 to 10.3% (mean \pm standard deviation = 9.4% \pm 1.4%).

○ Bayesian PP > 0.95

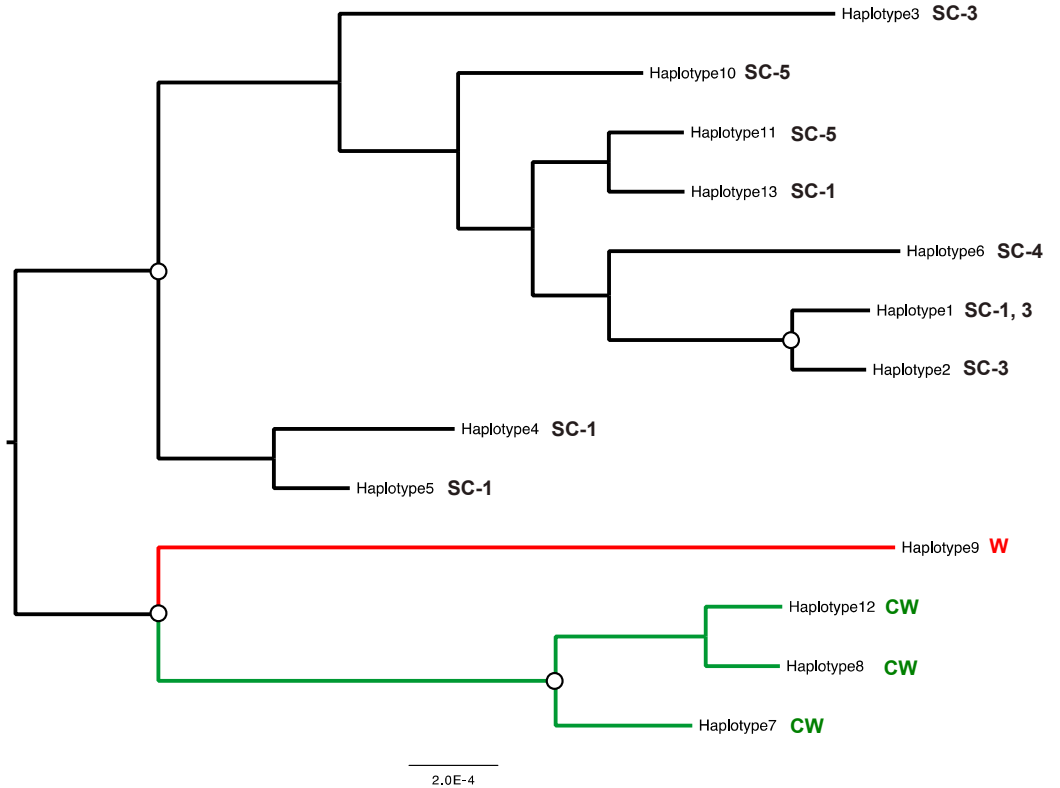


Figure 3 Bayesian unrooted tree for *Urodacus yaschenkoii* based on the 28S partial sequences.

Nuclear marker

Despite low level of variation in the 28S dataset, Bayesian analysis produced a nuclear gene topology that was largely concordant with the mitochondrial gene tree. Three genetically divergent clades were identified, corresponding to those from the mitochondrial dataset (SC, CW and W, Fig. 3). In each case, strong statistical support for the monophyly of each clade was found (posterior probability > 0.95). The unresolved interrelationships among lineages within each clade in the nuclear gene tree prevented any reliable inferences of phylogeographic patterns.

Molecular-based species delineation

Among the 31 unique mitochondrial haplotypes described above, the GMYC model identified nine entities and the PTP/bPTP approach identified seven, each representing putative species (Table 3). The assignment of haplotypes to putative species groups is shown in Fig. 2, where conspecifics share a common number. Species assignments were highly consistent when comparing each of the methods, but we presented the PTP/bPTP results as they are more accurate when the evolutionary distances between lineages are small (Zhang *et al.*, 2013). In summary, SC, W and CW clades were recognized as putative species groups, as were the sub-lineages within the SC ancestral grouping (SC-1 to 5, Fig. 2).

Table 3 Molecular species delineation analyses. Species delineation analyses in *Urodacus yaschenkoi* based on 31 unique mitochondrial haplotypes.

Analysis type	# Entities	Statistics
GMYC	9	Likelihood null model: 32.7519; likelihood best model: 33.36569; likelihood ratio: 1.2255; <i>P</i> -value, 0.0001, confidence interval: 1–10
PTP/bPTP (ML and BL)	7	Acceptance rate: 0.50975; merge: 49,942; split: 50,058

Discriminant power of morphological variation

None of the *U. yaschenkoi* specimens that were characterized at 21 morphological ratio variables were assigned to the W mitochondrial clade, hence the LDA was done on 39 females assigned to the SC and the CW clades. Individuals were categorized into four groups (putative species) based on the results of the PTP/bPTP molecular species delineation analysis: 18 females from SC-1, 12 from SC-3, three from the SC-4, and six from the CW clade (Fig. 2). Because our dataset contained four groups, we could find a maximum of three discriminant functions that separate these groups.

The first discriminant function (LD1) achieved 93.7% of the separation, reflecting the morphological distinction of the CW clade from the SC clade (Fig. 4). Further separation of the three putative groups within the SC clade was weak (LD2-3, Fig. 4). We then grouped samples into two putative species (CW and SC clade) and tested the accuracy of prediction using 100 jackknife resampling steps. The grouping into two molecular clades based on morphological variation was 100% accurate (33/33) for the SC clade and 83.3% accurate (5/6) for the CW clade. Therefore, our results indicate strong predictive power of body proportion variation on the observed molecular divergence, and suggest the existence of at least two distinct taxa within *U. yaschenkoi*.

The most discriminating uncorrelated proportions were of the telson and chela length (SL/ChL) and pedipalp and pecten length (PL/PecL). Overall, members of the CW clade tend to have disproportionately shortened chela and enlarged pecten when compared to the members of the SC clade.

Divergence dating

Our time calibrated mitochondrial phylogeny suggested that the split between the major *U. yaschenkoi* clades (SC, CW and W lineages) occurred during the late Miocene/early Pliocene (4–7 MYA) (Fig. 2). Lineage diversifications within SC appear to have occurred during the Pliocene and early Pleistocene (1.8–4 MYA), while finer-scale phylogeographic patterning within the sub-lineages arose during the late Pleistocene (<1 Mya). Divergence time estimates should be interpreted with some caution, as the nucleotide substitution rate was derived from a different scorpion family (Buthidae) and there are large errors margins around 95% HPD estimates.

Biogeographic patterns

The SC lineage showed substantial geographic structure. The most divergent sub-lineage (SC-5) was found in Western Australia in sympatry with the CW lineage (Fig. 1). SC-1 was found west of the Central Ranges, through to the Eyre Peninsula in South Australia, while

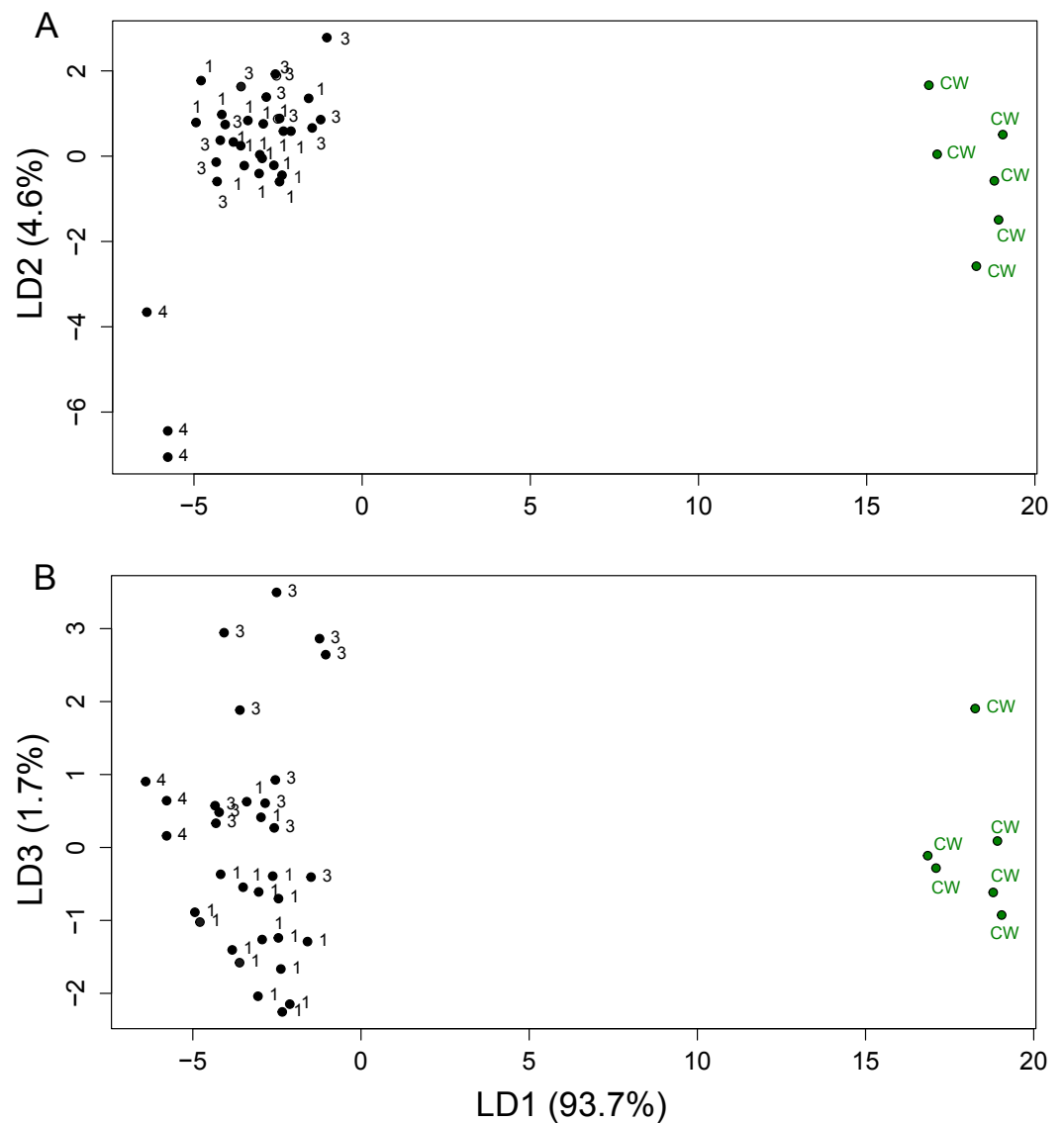


Figure 4 LDA for body proportions. Individual scores for the first 3 axes of Linear Discriminant Analysis. 21 body-proportions were measured in *Urodacus yaschenkoi* adult females. Numbers (1, 3, 4) denote individuals belonging to one of the SC sublineages (SC1, 3, 4), and CW denotes individuals from the CW clade.

SC-3 had a distribution extending from the Central to Mt Lofty Ranges in South Australia, and across to north-western Victoria. SC-4 had a narrow north-south distribution in the central inland and coastal regions of South Australia (Fig. 1).

DISCUSSION

Our analyses reveal strong genetic and morphological diversification in *U. yaschenkoi* across its range, pointing to the existence of a species complex with at least three putative species. High statistical support for the monophyly and the extent of genetic divergence between the main three lineages (6.4–6.9%) exceeds estimates of interspecific divergence previously

reported for other scorpion and arthropod groups (Bryson *et al.*, 2014; Tourinho, Sole-Cava & Lazoski, 2012; Wysocka *et al.*, 2011). DNA-based species delineation approaches (GMYC and bPTP) provided significant statistical support for the recognition of the three lineages (SC, CW, W) as distinct species, and potential further cryptic speciation within the south-central clade (SC1-5, Fig. 2).

We also demonstrated a strong association between this molecular divergence and morphological variation. Namely, ratios of several traits that approximate body shape had a strong predictive power (83–100%) in discriminating two major molecular clades (CW and SC). The two clades differ most notably in proportions involving chela and pecten. Because of their great variation in shape, scorpion chaelae have been used as one of the key characters to delineate different ecomorphotypes (Van der Meijden, Kleinteich & Coelho, 2012). Until now *U. yaschenkoi* has been distinguished from other congeneric species by its much smaller terminal prolateral tarsal ungues and by the production of large amounts of venom (Koch, 1977). Based on our results from a limited sample size, detailed analyses of morphological variation in *U. yaschenkoi* are warranted.

Our time-calibrated phylogeny suggests that the split between the CW, W and SC clades occurred during the mid-Miocene to early Pliocene (approximately 5–9 Mya). This geological time was marked by a shift to a much drier climate, the significant contraction of rainforests and the expansion of arid habitats (Martin, 2006). Further diversification within the major ancestral *U. yaschenkoi* lineages appears to have occurred throughout the Pliocene (3–5 Mya), which was a consistently dry period. This is followed by further lineage divergence during the mid and late Pleistocene when the climate was highly dynamic (<1 Mya), with wetter and drier episodes corresponding to interglacial and glacial cycles (McLaren & Wallace, 2010).

The spatio-temporal dynamics of diversification observed in *U. yaschenkoi* parallels those reported in other Australian arid biota. Reviewing tens of dated phylogenies of the south-western Australian terrestrial fauna, including arthropods like crayfish and spiders, Rix *et al.* (2015) found a compelling commonality in the basal east–west lineage diversification during the first half Miocene (until 10 Mya). The more xeric taxa currently occupying semi-arid and arid zones seemed to have experienced this divergence in late Miocene (6–10 Mya) (Rix *et al.*, 2015), which we also inferred in the desert scorpion *U. yaschenkoi* (Fig. 2). A strong genetic and morphological divergence between the *U. yaschenkoi* lineages from the western (CW, W) and south-central (SC) Australia could be partly explained by the Miocene east–west vicariance hypothesis (Rix *et al.*, 2015) (Fig. 1). After a longer period of range contraction, arid-adapted taxa such as *U. yaschenkoi* likely underwent significant range expansions during the Pliocene. Separation of SC-5 from other SC sub-lineages was estimated to have occurred during this time (Fig. 2), with SC-5 moving easterly. This sub-lineage is now sympatric with the CW clade (Fig. 1), suggesting their secondary contact. Further diversification within the SC clade (SC1-4) coincides with transition to the Pleistocene severe glacial cycles and expansion of the Australian deserts during the last 1 My (beginning of the “dusty world”, Rix *et al.*, 2015). Like the Bynoe’s gecko (Fujita *et al.*, 2010) and lizards (Dubey & Shine, 2010; Pepper *et al.*, 2011), *U. yaschenkoi* is another arid-adapted Australian taxon whose diversification and distribution were profoundly

affected by the opening of desert biomes during this hyper-arid, unstable climatic history. Teasing out the relative importance of vicariance, putative refugia (e.g., Pilbara, Kimberley, central Ranges, (Pepper, Doughty & Keogh, 2013), or dispersal (Melville et al., 2016) (Fig. 1) in shaping this diversity would require extensive sampling, particularly at the western and northern parts of *U. yaschenkoi* distribution.

Revising the *U. yaschenkoi* taxonomy—future directions

Our results provide solid baseline data on the historical and spatial extent of diversification in *U. yaschenkoi* and offer some guidelines for future integrative taxonomic approaches in delimiting species within this taxon. We found an agreement among disciplines (morphology, nuclear and mitochondrial genetic information) during a primary exploration, which strengthens the argument for a taxonomic revision (Pante, Schoelinck & Puillandre, 2014; Schlick-Steiner et al., 2009). Congruent morphological and molecular phylogenetic signals are particularly compelling for a scorpion taxon, given that this is not the case in many scorpion lineages (Sharma et al., 2015).

The level of mitochondrial sequence divergence observed between *U. yaschenkoi* lineages satisfy the requirements for species delineation based on the principles of the phylogenetic species concept (De Queiroz, 2007; Wheeler, 1999). The three major lineages (SC, CW, W) can be considered the putative species. Because genetic ‘yardstick’ approaches provide crude taxonomic measures and nucleotide substitution rates often vary considerably between taxonomic groups, some caution is needed when considering findings of these analyses alone. Additional DNA-based species delineation approaches (GMYC and bPTP) indicated extensive cryptic speciation in *U. yaschenkoi* (Fig. 2). The GMYC method has been criticized for over-splitting species with a pronounced genetic structure (Satler, Carstens & Hedin, 2013), yet several recent studies have shown that it is highly robust (Fujisawa & Barraclough, 2013; Talavera et al., 2013). The obvious next step is to characterize the nuclear genome-wide variation in *U. yaschenkoi* sampled extensively within the “type” locality (28°35’S, 138°33’E), as well as western and northern parts of the distribution. We certainly advise against a pool-sequencing phylogenomic approach (e.g., samples from the same location are pooled to achieve cost-efficiency), given that the putative species have been found in sympatry.

The proportions of various morphological characters are routinely used in species descriptions or identification keys, particularly for arthropods where morphologically similar species often differ significantly in body proportions but not in qualitative characters (Baur & Leuenberger, 2011). Arguably, the results of multivariate analyses summarizing the overall body shape differences between groups are not easily interpreted. Yet, our initial results suggest that further analyses of e.g., chela shape might reveal more easily quantifiable diagnostic characters for *U. yaschenkoi*. Several parameters of chela shape were found to be correlated with the amount of strain stress they can withstand. Specifically, slender chela morphologies may be less suitable for high-force functions such as burrowing and defence (Van der Meijden, Kleinteich & Coelho, 2012). Given that *U. yaschenkoi* putative species (SC and CW) show marked shape differences involving chela, further exploration of burrowing behavior or prey preference might provide additional characters to describe the *U. yaschenkoi* species complex.

Finally, it is important to note that we cannot exclude the possibility that some of the cryptic lineages have already been described as species, and we are not able to compare our genetic data against other *Urodacus* sequences as none published at the time of our study. Also, our sampling did not cover the exact “type” locality (28°35'S, 138°33'E). The samples closest to this area belong to the SC clade and likely represent the “type” lineage. These data gaps would need to be addressed in further studies aiming to revise the taxonomy of the Australian desert scorpion *U. yaschenkoi*.

CONCLUSIONS

Our study provides the first insight into the molecular phylogeny of the endemic Australian scorpion *Urodacus yaschenkoi*. We show that this scorpion shares a complex diversification history with other Australian arid-adapted fauna. Concordance between the mitochondrial and nuclear data, along with the morphological variation, all suggest that *U. yaschenkoi* is a species complex that requires further taxonomic revision. Our findings highlight the importance of conserving populations from different Australian arid zones in order to preserve patterns of endemism and evolutionary potential.

ADDITIONAL INFORMATION AND DECLARATIONS

Funding

KLR was supported by scholarships from CONACyT and from The Hugh Williamson Foundation, through Museum Victoria. The funders had no role in study design, data collection and analysis, decision to publish, or preparation of the manuscript.

Grant Disclosures

The following grant information was disclosed by the authors:
CONACyT.

The Hugh Williamson Foundation.

Competing Interests

The authors declare there are no competing interests.

Author Contributions

- Karen Luna-Ramirez conceived and designed the experiments, performed the experiments, contributed reagents/materials/analysis tools, wrote the paper.
- Adam D. Miller and Gordana Rašić analyzed the data, contributed reagents/materials/analysis tools, wrote the paper, prepared figures and/or tables, reviewed drafts of the paper.

DNA Deposition

The following information was supplied regarding the deposition of DNA sequences:

The sequences described here are accessible via GenBank accession numbers [KP176717–KP176786](#).

Data Availability

The following information was supplied regarding data availability:

The raw data has been supplied as [Supplementary File](#).

Supplemental Information

Supplemental information for this article can be found online at <http://dx.doi.org/10.7717/peerj.2759#supplemental-information>.

REFERENCES

- Akaike H, Company N-HP. 1981.** Likelihood of a model and information criteria. *Journal of Econometrics* **16**:3–14 DOI [10.1016/0304-4076\(81\)90071-3](https://doi.org/10.1016/0304-4076(81)90071-3).
- Arabi J, Judson MLI, Deharveng L, Lourenço WR, Cruaud C, Hassanin A. 2012.** Nucleotide composition of CO1 sequences in Chelicerata (arthropoda): detecting new mitogenomic rearrangements. *Journal of Molecular Evolution* **74**:81–95 DOI [10.1007/s00239-012-9490-7](https://doi.org/10.1007/s00239-012-9490-7).
- Baur H, Leuenberger C. 2011.** Analysis of ratios in multivariate morphometry. *Systematic Biology* **60**:813–825 DOI [10.1093/sysbio/syr0611](https://doi.org/10.1093/sysbio/syr0611).
- Birula AA. 1903.** Beiträge zur Kenntniss der Scorpionenfauna Ost-Persiens. (2. Beitrag). *Bulletin de l'Académie Impériale des Sciences de St. Pétersbourg* **19**:67–80.
- Bouckaert R, Heled J, Kühnert D, Vaughan T, Wu CH, Xie D, Suchard MA, Rambaut A, Drummond AJ. 2014.** BEAST 2: a software platform for bayesian evolutionary analysis. *PLOS Computational Biology* **10**:e1003537 DOI [10.1371/journal.pcbi.1003537](https://doi.org/10.1371/journal.pcbi.1003537).
- Bryson RW, Prendini L, Savary WE, Pearman PB. 2014.** Caves as microrefugia: Pleistocene phylogeography of the troglomorphic North American scorpion *Pseudouroctonus reddelli*. *BMC Evolutionary Biology* **14**:9 DOI [10.1186/1471-2148-14-9](https://doi.org/10.1186/1471-2148-14-9).
- Bryson RW, Riddle BR, Graham MR, Smith BT, Prendini L. 2013a.** As old as the hills: montane scorpions in southwestern north america reveal ancient associations between biotic diversification and landscape history. *PLOS ONE* **8**:e52822 DOI [10.1371/journal.pone.0052822](https://doi.org/10.1371/journal.pone.0052822).
- Bryson RW, Savary WE, Prendini L, Parmakelis A. 2013b.** Biogeography of scorpions in the *Pseudouroctonus minimus* complex (Vaejovidae) from south-western North America: implications of ecological specialization for pre-quaternary diversification. *Journal of Biogeography* **40**:1850–1860 DOI [10.1111/jbi.12134](https://doi.org/10.1111/jbi.12134).
- Convention on International Trade in Endangered Species of Wild Fauna and Flora. 2014.** Available at <http://www.cites.org/eng/app/appendices.php> (accessed on 10 September 2014).
- De Queiroz K. 2007.** Species concepts and species delimitation. *Systematic Biology* **56**:879–886 DOI [10.1080/10635150701701083](https://doi.org/10.1080/10635150701701083).
- Drummond AJ, Suchard MA, Xie D, Rambaut A. 2012.** Bayesian phylogenetics with BEAUti and the BEAST 1.7. *Molecular Biology and Evolution* **29**:1969–1973 DOI [10.1093/molbev/mss075](https://doi.org/10.1093/molbev/mss075).

- Dubey S, Shine R. 2010.** Evolutionary Diversification of the Lizard Genus *Bassiana* (Scincidae) across Southern Australia. *PLOS ONE* 5:e12982 DOI 10.1371/journal.pone.0012982.
- Dunlop JA. 2010.** Geological history and phylogeny of Chelicerata. *Arthropod Structure & Development* 39:124–142 DOI 10.1016/j.asd.2010.01.003.
- Farris JS, Källersjö M, Kluge AG, Bult C. 1995.** Constructing a significance test for incongruence. *Systematic Biology* 44:570–572 DOI 10.1093/sysbio/44.4.570.
- Fet V, Polis GA, Sissom WD. 1998.** Life in sandy deserts: the scorpion model. *Journal of Arid Environments* 39:609–622 DOI 10.1006/jare.1997.0386.
- Fujisawa T, Barraclough TG. 2013.** Delimiting species using single-locus data and the generalized mixed yule coalescent approach: a revised method and evaluation on simulated data sets. *Systematic Biology* 62:707–724 DOI 10.1093/sysbio/syt033.
- Fujita MK, McGuire JA, Donnellan SC, Moritz C. 2010.** Diversification and persistence at the arid-monsoonal interface: australia-wide biogeography of the Bynoe’s gecko (*Heteronotia binoei*; Gekkonidae). *Evolution* 64:2293–2314 DOI 10.1111/j.1558-5646.2010.00993.x.
- Gantenbein B, Fet V, Gantenbein-Ritter IA, Balloux F. 2005.** Evidence for recombination in scorpion mitochondrial DNA (Scorpiones: Buthidae). *Proceedings of the Royal Society B* 272:697–704 DOI 10.1098/rspb.2004.3017.
- Gantenbein B, Largiadèr CR. 2003.** The phylogeographic importance of the Strait of Gibraltar as a gene flow barrier in terrestrial arthropods: a case study with the scorpion *Buthus occitanus* as model organism. *Molecular Phylogenetics and Evolution* 28:119–130 DOI 10.1016/S1055-7903(03)00031-9.
- Glauert L. 1963.** Notes on *Urodacus* scorpions. *Western Australian Naturalist* 8:132–135.
- Graham MRMR, Oláh-Hemmings V, Fet V. 2012.** Phylogeography of co-distributed dune scorpions identifies the Amu Darya river as a long-standing component of central Asian biogeography: (Scorpiones: Buthidae). *Zoology in the Middle East* 55:95–110 DOI 10.1080/09397140.2012.10648924.
- Gurevitz M, Karbat I, Cohen L, Ilan N, Kahn R, Turkov M, Stankiewicz M, Stühmer W, Dong K, Gordon D. 2007.** The insecticidal potential of scorpion β -toxins. *Toxicon* 49:473–489 DOI 10.1016/j.toxicon.2006.11.015.
- Jeram AJ. 1997.** Phylogeny, classification and evolution of Silurian and Devonian scorpions. In: *Proceedings of the 17th European colloquium of arachnology, Edinburgh*, 17–31.
- Kjellesvig-Waering EN. 1986.** *A restudy of the fossil Scorpionida of the world. Paleontographica Americana, no. 55.* Ithaca: Paleontological Research Institute, 287 pp.
- Koch LE. 1977.** The taxonomy, geographic distribution and evolutionary radiation of Australo-Papuan scorpions. *Records of the Western Australian Museum* 5:79–79.
- Kraepelin K. 1916.** Results of Dr. E. Mjöberg’s Swedish Scientific Expeditions to Australia 1910–1913. 4. Scolopendriden und Scorpione. *Arkiv för Zoologi* 10:1–43.
- Lourenço WR. 2001.** The scorpion families and their geographical distribution. *Journal of Venomous Animals and Toxins* 7:3–23 DOI 10.1590/S0104-79302001000100002.

- Lourenço WR, Cuellar O. 1995.** Scorpions, scorpionism, life history strategies and parthenogenesis. *Journal of Venomous Animals and Toxins* 1:51–62
DOI [10.1590/S0104-79301995000200002](https://doi.org/10.1590/S0104-79301995000200002).
- Luna-Ramírez K, Bartok A, Restano-Cassulini R, Quintero-Hernández V, Coronas FIV, Christensen J, Wright CE, Panyi G, Possani LD. 2014.** Structure, molecular modeling, and function of the novel potassium channel blocker urotoxin Isolated from the venom of the Australian scorpion *Urodacus yaschenkoi*. *Molecular Pharmacology* 86:28–41 DOI [10.1124/mol.113.090183](https://doi.org/10.1124/mol.113.090183).
- Luna-Ramírez K, Quintero-Hernández V, Vargas-Jaimes L, Batista CVF, Winkel KD, Possani LD. 2013.** Characterization of the venom from the Australian scorpion *Urodacus yaschenkoi*: Molecular mass analysis of components, cDNA sequences and peptides with antimicrobial activity. *Toxicon* 63:44–54
DOI [10.1016/j.toxicon.2012.11.017](https://doi.org/10.1016/j.toxicon.2012.11.017).
- Martin HA. 2006.** Cenozoic climatic change and the development of the arid vegetation in Australia. *Journal of Arid Environments* 66:533–563
DOI [10.1016/j.jaridenv.2006.01.009](https://doi.org/10.1016/j.jaridenv.2006.01.009).
- McLaren S, Wallace MW. 2010.** Plio-Pleistocene climate change and the onset of aridity in southeastern Australia. *Global and Planetary Change* 71:55–72
DOI [10.1016/j.gloplacha.2009.12.007](https://doi.org/10.1016/j.gloplacha.2009.12.007).
- Melville J, Haines ML, Hale J, Chapple S, Ritchie EG. 2016.** Concordance in phylogeography and ecological niche modelling identify dispersal corridors for reptiles in arid Australia. *Journal of Biogeography* 43:1844–1855 DOI [10.1111/jbi.12739](https://doi.org/10.1111/jbi.12739).
- Monod L, Prendini L. 2015.** Evidence for Eurogondwana: the roles of dispersal, extinction and vicariance in the evolution and biogeography of Indo-Pacific Hormuridae (Scorpiones: Scorpionoidea). *Cladistics* 31:71–111 DOI [10.1111/cla.12067](https://doi.org/10.1111/cla.12067).
- Pante E, Schoelinck C, Puillandre N. 2014.** From integrative taxonomy to species description: one step beyond. *Systematic Biology* 64:152–160 DOI [10.1093/sysbio/syu083](https://doi.org/10.1093/sysbio/syu083).
- Pepper M, Doughty P, Keogh JS. 2013.** Geodiversity and endemism in the iconic Australian Pilbara region: a review of landscape evolution and biotic response in an ancient refugium. *Journal of Biogeography* 40:1225–1239 DOI [10.1111/jbi.12080](https://doi.org/10.1111/jbi.12080).
- Pepper M, Ho SYW, Fujita MK, Scott Keogh J. 2011.** The genetic legacy of aridification: climate cycling fostered lizard diversification in Australian montane refugia and left low-lying deserts genetically depauperate. *Molecular Phylogenetics and Evolution* 61:750–759 DOI [10.1016/j.ympev.2011.08.009](https://doi.org/10.1016/j.ympev.2011.08.009).
- Pons J, Barraclough TG, Gomez-Zurita J, Cardoso A, Duran DP, Hazell S, Kamoun S, Sumlin WD, Vogler AP. 2006.** Sequence-based species delimitation for the DNA taxonomy of undescribed insects. *Systematic Biology* 55:595–609
DOI [10.1080/10635150600852011](https://doi.org/10.1080/10635150600852011).
- Posada D. 2008.** jModelTest: phylogenetic model averaging. *Molecular Biology and Evolution* 25:1253–1256 DOI [10.1093/molbev/msn083](https://doi.org/10.1093/molbev/msn083).
- Possani LD, Merino E, Corona M, Bolivar F, Becerril B. 2000.** Peptides and genes coding for scorpion toxins that affect ion-channels. *Biochimie* 82:861–868
DOI [10.1016/S0300-9084\(00\)01167-6](https://doi.org/10.1016/S0300-9084(00)01167-6).

- Prendini L. 2010.** Order Scorpiones CL Koch, 1837 scorpions. In: Gerlach J, Marusik Y, eds. *Arachnida and Myriapoda of the Seychelles islands*. Manchester: Siri Scientific Press, 321–330.
- Prendini L, Wheeler WC. 2005.** Scorpion higher phylogeny and classification, taxonomic anarchy, and standards for peer review in online publishing. *Cladistics* **21**:446–494 DOI [10.1111/j.1096-0031.2005.00073.x](https://doi.org/10.1111/j.1096-0031.2005.00073.x).
- R Development Core Team. 2008.** R: a language and environment for statistical computing. Vienna: R Foundation for Statistical Computing. Available at <http://www.R-project.org>.
- Rambaut A, Suchard MA, Xie D, Drummond AJ. 2014.** Tracer v1.6. Available at <http://beast.bio.ed.ac.uk/Tracer>.
- Rix MG, Edwards DL, Byrne M, Harvey MS, Joseph L, Roberts JD. 2015.** Biogeography and speciation of terrestrial fauna in the south-western Australian biodiversity hotspot. *Biological Reviews* **90**:762–793 DOI [10.1111/brv.12132](https://doi.org/10.1111/brv.12132).
- Rodríguez de la Vega RC, Schwartz EF, Possani LD. 2010.** Mining on scorpion venom biodiversity. *Toxicon* **56**:1155–1161 DOI [10.1016/j.toxicon.2009.11.010](https://doi.org/10.1016/j.toxicon.2009.11.010).
- Satler JD, Carstens BC, Hedin M. 2013.** Multilocus species delimitation in a complex of morphologically conserved trapdoor spiders (mygalomorphae, antrodiaetidae, Aliatypus). *Systematic Biology* **62**:805–823 DOI [10.1093/sysbio/syt041](https://doi.org/10.1093/sysbio/syt041).
- Schlick-Steiner BC, Steiner FM, Seifert B, Stauffer C, Christian E, Crozier RH. 2009.** Integrative taxonomy: a multisource approach to exploring biodiversity. *Annual Review of Entomology* **55**:421–438 DOI [10.1146/annurev-ento-112408-085432](https://doi.org/10.1146/annurev-ento-112408-085432).
- Sharma PP, Fernández R, Esposito LA, González-Santillán E, Monod L. 2015.** Phylogenomic resolution of scorpions reveals multilevel discordance with morphological phylogenetic signal. *Proceedings of the Royal Society B: Biological Sciences* **282**:20142953 DOI [10.1098/rspb.2014.2953](https://doi.org/10.1098/rspb.2014.2953).
- Sharma PP, Kaluziak ST, Pérez-Porro AR, González VL, Hormiga G, Wheeler WC, Giribet G. 2014.** Phylogenomic interrogation of Arachnida reveals systemic conflicts in phylogenetic signal. *Molecular Biology and Evolution* **31**:2963–2984.
- Shultz JW. 2007.** A phylogenetic analysis of the arachnid orders based on morphological characters. *Zoological Journal of the Linnean Society* **150**:221–265 DOI [10.1111/j.1096-3642.2007.00284.x](https://doi.org/10.1111/j.1096-3642.2007.00284.x).
- Simon C, Frati F, Beckenbach A, Crespi B, Liu H, Flook P. 1994.** Evolution, weighting, and phylogenetic utility of mitochondrial gene sequences and a compilation of conserved PCR primers. *Annals of the Entomological Society of America* **87**:651–701 DOI [10.1093/aesa/87.6.651](https://doi.org/10.1093/aesa/87.6.651).
- Soleglad ME, Fet V. 2003.** High-level systematics and phylogeny of the extant scorpions (Scorpiones: Orthosterni). *Euscorpius* **11**:1–175.
- Stachel SJ, Stockwell SA, Van Vranken DL. 1999.** The fluorescence of scorpions and cataractogenesis. *Chemistry and Biology* **6**:531–539 DOI [10.1016/S1074-5521\(99\)80085-4](https://doi.org/10.1016/S1074-5521(99)80085-4).
- Swofford DL. 2002.** PAUP*. Phylogenetic analysis using parsimony (*and other methods). Version 4. Sunderland: Sinauer Associates.

- Talavera G, Dincă V, Vila R, Paradis E. 2013.** Factors affecting species delimitations with the GMYC model: insights from a butterfly survey. *Methods in Ecology and Evolution* 4:1101–1110 DOI [10.1111/2041-210X.12107](https://doi.org/10.1111/2041-210X.12107).
- Tanaka H, Roubik DW, Kato M, Liew F, Gunsalam G. 2001.** Phylogenetic position of *Apis nuluensis* of northern Borneo and phylogeography of *A. cerana* as inferred from mitochondrial DNA sequences. *Insectes Sociaux* 48:44–51 DOI [10.1007/PL00001744](https://doi.org/10.1007/PL00001744).
- Tourinho JL, Sole-Cava AM, Lazoski C. 2012.** Cryptic species within the commercially most important lobster in the tropical Atlantic, the spiny lobster *Panulirus argus*. *Marine Biology* 159:1897–1906 DOI [10.1007/s00227-012-1977-7](https://doi.org/10.1007/s00227-012-1977-7).
- Van der Meijden A, Kleinteich T, Coelho P. 2012.** Packing a pinch: functional implications of chela shapes in scorpions using finite element analysis. *Journal of Anatomy* 220:423–434 DOI [10.1111/j.1469-7580.2012.01485.x](https://doi.org/10.1111/j.1469-7580.2012.01485.x).
- Venables W, Ripley B. 2002.** *Modern applied statistics with S*. 4th edition. New York: Springer.
- Volschenk ES, Harvey MS, Prendini L. 2012.** A new species of *Urodacus* (Scorpiones: Urodacidae) from Western Australia. *American Museum Novitates* 3748:1–18 DOI [10.1206/3748.2](https://doi.org/10.1206/3748.2).
- Volschenk ES, Mattoni CI, Prendini L. 2008.** Comparative anatomy of the mesosomal organs of scorpions (Chelicerata, Scorpiones), with implications for the phylogeny of the order. *Zoological Journal of the Linnean Society* 154:651–675 DOI [10.1111/j.1096-3642.2008.00426.x](https://doi.org/10.1111/j.1096-3642.2008.00426.x).
- Volschenk ES, Prendini L. 2008.** *Aops oncodactylus*, gen. et sp. nov., the first troglobitic urodacid (Urodacidae: Scorpiones), with a re-assessment of cavernicolous, troglobitic and troglomorphic scorpions. *Invertebrate Systematics* 22:235–257 DOI [10.1071/IS06054](https://doi.org/10.1071/IS06054).
- Walker KL, Yen AL, Milledge GA. 2003.** *Spiders and Scorpions commonly found in Victoria*. Melbourne: The Royal Society of Victoria.
- Wheeler QD. 1999.** Why the phylogenetic species concept?—Elementary. *Journal of Nematology* 31:134–141.
- Wysocka A, Krzysztofiak L, Krzysztofiak A, Zolnierkiewicz O, Ojdowska E, Sell J. 2011.** Low genetic diversity in polish populations of sibling ant species: *Lasius niger* (L.) and *Lasius platythorax* Seifert (Hymenoptera, Formicidae). *Insectes Sociaux* 58:191–195 DOI [10.1007/s00040-010-0135-9](https://doi.org/10.1007/s00040-010-0135-9).
- Xu X, Duan Z, Di Z, He Y, Li J, Li Z, Xie C, Zeng X, Cao Z, Wu Y, Liang S, Li W. 2014.** Proteomic analysis of the venom from the scorpion *Mesobuthus martensii*. *Journal of Proteomics* 106:162–180 DOI [10.1016/j.jprot.2014.04.032](https://doi.org/10.1016/j.jprot.2014.04.032).
- Zhang J, Kapli P, Pavlidis P, Stamatakis A. 2013.** A general species delimitation method with applications to phylogenetic placements. *Bioinformatics* 29:2869–2876 DOI [10.1093/bioinformatics/btt499](https://doi.org/10.1093/bioinformatics/btt499).