


The effect of age on the magnitude and longevity of Th1-directed CD4 T-cell responses to SARS-CoV-2

Ryan G. Natrass^{1,2}  | Lisa Krafft^{1,2} | Polina Zjablovskaja³ | Marc Schuster³ | Bahram Kasmapour³ | Cem Sarisoy^{1,2} | Jessica Minich^{1,2} | Elena Bach^{1,2} | Hendrik Streeck^{1,2}

¹Institute of Virology, University Hospital Bonn, Bonn, Germany

²German Centre for Infection Research (DZIF), partner site Bonn-Cologne, Braunschweig, Germany

³Miltenyi Biotec, Bergisch Gladbach, Germany

Correspondence

Ryan G. Natrass, Institute of Virology, University Hospital Bonn, Bonn 53127, Germany.

Email: ryan.natrass@ukbonn.de

Funding information

This project was funded by the State of North Rhine-Westphalia, Germany.

Abstract

Age is associated with changes in the immune system which increase the risk for severe COVID-19. Here, we investigate SARS-CoV-2-reactive CD4 T cells from individuals recovered from SARS-CoV-2 infection with mild COVID-19 symptoms after 3, 6 and 9 months using incubation with SARS-CoV-2 S1, S2 and N-peptide pools, followed by flow cytometry for a Th1-activation profile or proliferation analyses. We found that SARS-CoV-2-reactive CD4 T cells are decreasing on average after 9 months but highly polyfunctional CD4 T cells can peak after 6-month recovery. We show that individuals older than 60 years of age have significantly more SARS-CoV-2-reactive T cells in their blood after 3 months of recovery compared to younger individuals and that the percentage of SARS-CoV-2-reactive Th1-directed CD4 T cells in the blood of mild-COVID-19-recovered individuals correlates with age. Finally, we show that individuals over the age of 40 have significantly increased the amounts of highly polyfunctional SARS-CoV-2-S-peptide-reactive CD4 T cells, compared to SARS-CoV-2 naïve individuals, than those under the age of 40. These findings suggest that in individuals recovered from mild COVID-19, increased age is associated with significantly more highly polyfunctional SARS-CoV-2-reactive CD4 T cells with a Th1-profile and that these responses persist over time.

KEYWORDS

age, CD4 T cell, flow cytometry, SARS-CoV-2, Th1

Abbreviations: Adv5, human adenovirus 5; BrdU, bromodeoxyuridine; CD, cluster of differentiation; CMV, cytomegalovirus; COVID-19, coronavirus disease 19; DMSO, dimethyl sulfoxide; EBV, Epstein–Barr virus; ELISA, enzyme-linked immunosorbent assay; h, hours; IAC, intra-assay control; IFN γ , interferon gamma; IgA, immunoglobulin A; IgG, immunoglobulin G; IL-2, interleukin 2; N, SARS-CoV-2 “N”-peptide pool; PBMC, peripheral blood mononuclear cell; PCR, polymerase chain reaction; PHA, phytohaemagglutinin; POD, peroxidase; RPMI, Roswell Park Memorial Institute; S1, SARS-CoV-2 “S1”-peptide pool; S2, SARS-CoV-2 “S2”-peptide pool; SARS-CoV-2, severe acute respiratory syndrome coronavirus 2; Th1, type-1 T helper; Th2, type-2 T helper; TNF α , tumour necrosis factor alpha; YO, years old.

This is an open access article under the terms of the [Creative Commons Attribution](https://creativecommons.org/licenses/by/4.0/) License, which permits use, distribution and reproduction in any medium, provided the original work is properly cited.

© 2022 The Authors. *Immunology* published by John Wiley & Sons Ltd.



INTRODUCTION

The novel human pathogen severe acute respiratory syndrome coronavirus 2 (SARS-CoV-2) [1] which causes coronavirus disease 19 (COVID-19) has led to significant worldwide mortality since its discovery in late 2019.

Evidence, thus, far has indicated that the severity of COVID-19 after SARS-CoV-2 infection is linked to inefficient virus-specific immune responses. More severe COVID-19 cases have been linked with ineffective innate immunity [2,3] which can lead to a delayed adaptive immune response and a higher viral burden, a situation which has been associated with fatal cases of COVID-19 [4]. Furthermore, adaptive immune response involving the presence of detectable SARS-CoV-2-specific T cells in convalescent individuals has been significantly associated with milder disease [5–7]. Evidently, clearance of SARS-CoV-2 is dependent upon adaptive immune responses to SARS-CoV-2 antigens. Effective T-cell immunity has also been associated with the absence of disease progression for multiple viral infections and, specifically, the ability of polyfunctional T cells to generate multiple cytokines and activation markers upon stimulation with viral antigen [8,9]. Virus-specific T cells commonly develop a Th1 profile, which have well-documented anti-viral properties through the secretion of cytokines such as IFN γ , TNF α and IL-2 and which have shown to be protective against lethal SARS-CoV infection in mice [10].

Age has been identified as one of the largest risk factors for COVID-19 mortality with significantly increased rates of fatalities in individuals aged 65 years or older [11,12] and mortality from SARS-CoV-2-infection being approximately 10 times higher for a 40-year old compared to a 20-year old [13]. Ageing is associated with increased T-cell senescence, which may contribute to inefficient responses to viral infections [14]; however, conversely, senescence is also associated with increased T-cell inflammatory responses [15], which may add to the immunopathology of COVID-19. Several studies have demonstrated that age is associated with a perturbed and

reduced functional immune response to SARS-CoV-2 infection involving both the innate and adaptive immune system, which leads to increased inflammation and adverse COVID-19 outcome [16,17]. Furthermore, increased age is also associated with a decrease in naïve T cells [18] and COVID-19 severity has been inversely correlated with naïve T-cell frequency [5]. The ability of an immune system responding to a novel virus relies upon the repertoire of naïve T cells available and so an older individual is less likely to have an immune system as capable to respond as a younger one [19]. This may lead to a slower T-cell response and more severe course of disease.

Whilst increased age is associated with an increased likelihood of severe COVID-19, the effect of age on the adaptive immune response to SARS-CoV-2 in those individuals who do not develop severe symptoms is less well studied. We, therefore, investigate whether Th1-directed CD4 T-cell responses to SARS-CoV-2 peptides are different in individuals recovered from mild COVID-19 at 3, 6 and 9 months after recovery within different age groups.

MATERIAL AND METHODS

Study participants

A cohort of volunteers in a German SARS-CoV-2 high incidence area were recruited for sampling to determine the seropositivity prevalence in the population; the results of which were described elsewhere [20] (German Clinical Trials Register <https://www.drks.de> ID: DRKS00021306). A follow-up study to re-visit these individuals was approved and individuals were sampled 3 months and 6 months after the initial visit (German Clinical Trials Register, <https://www.drks.de>, ID: DRKS00023113). The study was approved by the Ethics Committee of the Medical Faculty of University Bonn (approval number 085/20). In all visits, plasma was collected and PBMCs isolated through density centrifugation and cryopreserved for downstream analyses. Study

TABLE 1 Study participants. V1 < 3-month recovery due to the proximity to the arrival of the SARS-CoV-2 virus in Europe in January 2020 - WHO situation reports [42], V2 (6–9-month recovery), V3 (9–12 months recovery). No individuals were vaccinated at the time of study participation

PBMC collection visit	Number of participants	IgG positive	IgG positive			
			<20-year old	20–39-year old	40–59-year old	>60-year old
V1	730	154	14	45	65	30
V1 + V2	236	62	7	11	35	9
V1 (+/- V2) + V3	161	43	5	7	25	6

participants across all three visits are detailed in Table 1 with reported symptom severity within age groups outlined in Table 2. Participants who were vaccinated or PCR positive for SARS-CoV-2 (methods described elsewhere, [20]), at any time-point, were not included within this study. SARS-CoV-2 naïve individuals were sampled from individuals within the first visit group.

Measurement of SARS-CoV-2 spike-specific plasma IgA and IgG

Cryopreserved plasma samples were thawed and each sample was tested using the Euroimmun IgG and IgA Anti-SARS-CoV-2 ELISA kits, as per manufacturer's instructions (Euroimmun). Briefly, plasma samples were thawed and diluted 1:101 in sample buffer and diluted samples were pipetted into test tubes precovered with SARS-CoV-2 spike protein and incubated 60 min at 37°C. Samples were washed thrice and subsequently incubated with peroxidase-conjugated anti-IgA or anti-IgG antibody. After the incubation (30 min at 37°C), the chromogenic substrate was added and samples were incubated for 30 min at room temperature. Finally, the reaction was stopped by the addition of the stop solution, and absorbance was measured on EUROIMMUN Analyzer I platform. A sample was considered positive if the ratio between the absorbance of the sample and calibrator was above 1.0 and negative if below 0.4 for both IgA and IgG.

T-cell stimulation

Cryopreserved PBMCs were thawed, washed and rested overnight at 37°C and 5% CO₂ in RPMI 1640 (Gibco) media containing 5% human AB serum (PAN-Biotech), 2 mM L-Glutamine, 1% penicillin/streptomycin and 5 U/ml Benzoylarginine Nuclease HC, Purity >99% (Millipore). Next, PBMCs were analysed for viability (7AAD staining solution,

Miltenyi Biotec) and absolute count by MACSQuant[®] Analyzer 16 (Miltenyi Biotec) and approximately 1x10⁶ PBMCs per well were seeded in U-bottomed 96-well plates (Corning) in 100 µl cell culture medium containing 5% human AB serum, 2 mM L-Glutamine and 1% penicillin/streptomycin per well. Cells were then stimulated via SARS-CoV-2 T-Cell Analysis Kit (PBMC), human (Miltenyi Biotec). In short, cells were stimulated with different SARS-CoV-2 PepTivator[®] Peptide Pools (Prot_S, Prot_S1 and Prot_N) at 1 µg/ml and CytoStim[™], human (Miltenyi Biotec) was used as a positive control and DMSO at identical concentrations as stimulated wells as negative control. The peptide pools consist of lyophilized peptides, consisting mainly of 15-mer sequences with 11 amino acids overlapping. Prot_S mainly covers the S2-region of the spike protein and is referred to as S2 henceforth. The Prot_S peptide pool covers amino acid regions of S2 including 683–707, 741–770, 785–802 and 885–1273 with a small overlap of the S1 region with the amino acid regions 304–338, 421–475 and 492–519. The Prot_S1 peptide pool completely covers the S1 amino acid regions and is referred to as S1, and the Prot_N peptide pool completely covers the N amino acid regions and is referred to as N. After 2 h stimulation, Brefeldin A (Sigma-Aldrich) was added to the stimulated cells for a final concentration of 25 µg/ml and incubated for an additional 4 h. Intra-assay Control (IAC) samples were treated identically but stimulated with a mix of human PepTivator CMV pp65, PepTivator EBV Consensus, PepTivator AdV5 Hexon (Miltenyi Biotec) to illicit a robust response. For this, whole blood from a single healthy individual was collected, processed and preserved identically to study participant samples and used to benchmark assay stability amongst assays across the study.

ICS for analysis via flow cytometry

The stimulated cells were stained with the live/dead marker Viability[™] 405/452 Fixable Dye, then fixed using

TABLE 2 Study participant COVID-19 symptoms within age groups. No individuals were hospitalized due to COVID-19. Some individuals reported multiple symptoms

Age groups (years)	Number of participants	Asymptomatic		Anosmia		Cough		Fever	
		Individuals	% of total age group	Individuals	% of total age group	Individuals	% of total age group	Individuals	% of total age group
<20	14	5	35.7%	1	7.14%	7	50%	1	7.14%
20–39	45	6	13.3%	15	33.3%	22	48.9%	13	28.9%
40–59	65	7	10.8%	20	30.8%	35	53.8%	12	18.4%
>60	30	7	23.3%	9	30%	19	63.3%	7	23.3%



Inside Fix (Miltenyi Biotec). Cells were then permeabilized for intracellular staining using the Inside Stain Kit (Miltenyi Biotec) and stained with an anti-human antibody panel from Miltenyi Biotec for surface proteins CD3 (APC), CD4 (VioBright515), CD8 (VioGreen), CD14 (VioBlue), CD20 (VioBlue), CD154 (APC-Vio770) and intracellular staining for IFN γ (PE), IL-2 (PE-Vio 615) and TNF α (PE-Vio770).

Flow cytometry and analysis

Two 96-well plates each containing 11 study participant samples and one IAC were prepared for analysis every day. Samples were transferred to U-bottomed 96-well plates and analysed overnight using two MACSQuant[®] Analyzer 16 equipped with robotic needle arm, MACS[®] MiniSampler Plus automated 96-well plate handler and MACSQuant[®] Buffer Supply Station 20 L. Over 150 plates were analysed in this manner over a span of 6 months.

Resulting MQD data files were exported in FCS 3.1 format and analysed in FlowJo 10.6.2 (FlowJo, LLC). Gates were drawn upon lymphocytes, single cells, CD3⁺ cells and viable cells before downstream analyses. Gates for activation marker positive CD4 T cells were drawn using unstimulated DMSO control for each donor. Donors with total live CD4 T-cell counts under 15 000 events were discarded.

Proliferation assay

Cryopreserved PBMCs were thawed, washed and left overnight in RPMI 1640 (Gibco) media containing 5% human AB serum (PAN-Biotech), 2 mM L-Glutamine, 1% penicillin/streptomycin and 5 U/ml Benzoyl-DL-Arginine-Hydrolyase Nuclease HC, Purity >99% (Millipore). The next day, viable cells were counted via trypan blue exclusion and plated in media containing 5% human AB serum (PAN-Biotech), 2 mM L-Glutamine and 1% penicillin/streptomycin at 375000 cells per well into 96-well flat-bottomed plate (Corning) in triplicate and stimulated at 0.25 μ g/ml with Prot_N (N), Prot_S1 (S1), Prot_S2 (S2) (Miltenyi Biotec), as well as positive control (PHA 0.5 μ g/ml) and negative control (DMSO). Plates were incubated for 48 h. Proliferation was detected using a BrdU Cell Proliferation Assay kit (Sigma) as per manufacturer instructions. In short, BrdU labelling solution was added to wells for the last 20 h of incubation, cells were then dried, fixed and incubated for 90 min with anti-BrdU-POD (peroxidase) monoclonal antibody.

Next, substrate solution (Tetramethylbenzidine) was added and colour change halted after 5 min with 25 μ l 1 M H₂SO₄. Plates were read in an ELISA reader at 450 nm. Data are shown as stimulation index (SI) as a fold change compared to DMSO control wells.

Statistical analyses

Data collection and analysis were performed using FlowJo 10 and GraphPad Prism 9.1. Data are shown as mean + 95% confidence intervals. Activation marker positive T cells were calculated by subtracting the unstimulated DMSO control for each donor with negative values being interpreted as zero. In all figures, * represents a p value of <0.05, ***p* < 0.01, ****p* < 0.001 and *****p* < 0.0001.

RESULTS

Persistence of SARS-CoV-2-reactive adaptive immune responses after recovery from COVID-19

Previous studies have demonstrated that the presence of SARS-CoV-2-reactive T cells within an individual is protective against severe COVID-19 outcome [5] [21]. To quantify SARS-CoV-2 reactive CD4 T cells in individuals who recovered from COVID-19 at least 9 months post recovery, PBMCs were cultured with peptide pools from the Nucleocapsid (N) or Spike (S1) (S2) regions of SARS-CoV-2 and CD4 T cells were analysed via flow cytometry for upregulation of Th1-related cytokines IFN γ , IL-2 and TNF α as well as expression of CD154 (representative gating shown in Figure S1). Analysis of SARS-CoV-2-reactive CD4 T cells with two upregulated activation markers showed the strongest response at the earliest time-point, less than 3 months after initial infection which then decreased in magnitude over the next 9 months (Figure 1a). S1 and N, but not S2-reactive CD4 T cells with two upregulated functional activation markers were still detectable in individuals who recovered from COVID-19 at least 9 months after recovery when compared to SARS-CoV-2 naïve individuals (Figure 1, A, 9–12 months recovery). Analyses of SARS-CoV-2-peptide-induced increase in proliferation revealed significant proliferative responses at less than 3-month recovery with N and S2-peptide pool stimulation (Figure 1b, <3-month recovery, N *p* = 0.007, S2 *p* = 0.001), at 6-month recovery with S2 but not N or S1 stimulation (Figure 1b, 6–9-month recovery, S2

$p = 0.045$) and at 9-month recovery with all three peptide pools used (Figure 1b, 9–12 months recovery, $N p = 0.002$, $S1 p = 0.43$, $S2 p = 0.001$).

Taken together, these data indicate individuals who recovered from COVID-19 retain CD4 T cells capable of responding to SARS-CoV-2 peptides at least 9 months

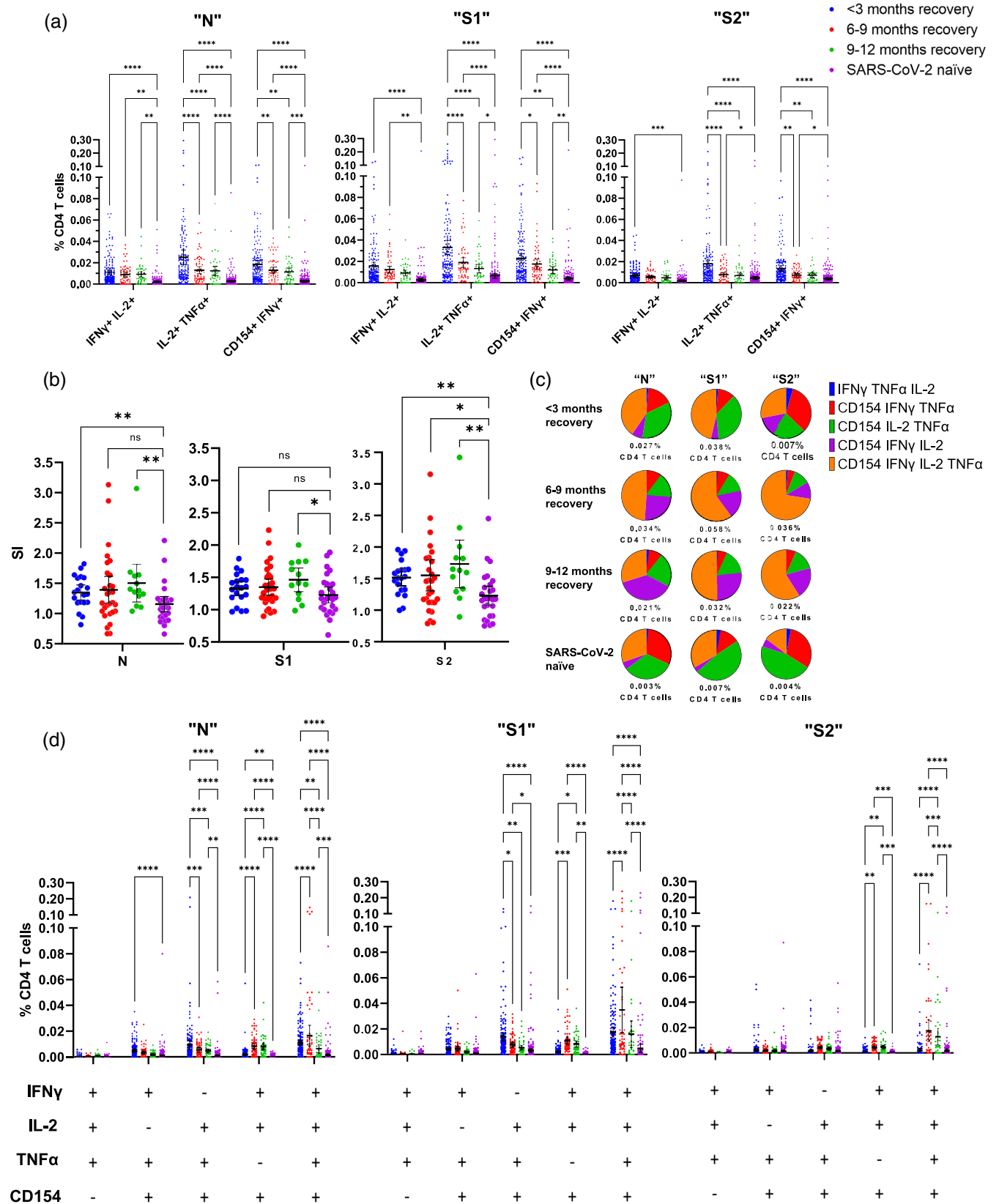


FIGURE 1 Legend on next page.



after recovery towards both the spike and nucleocapsid of SARS-CoV-2.

Polyfunctional SARS-CoV-2-reactive CD4 T-cell responses over time

Given that polyfunctional T-cell responses are closely linked to viral control in other viral infections [22,23], polyfunctional SARS-CoV-2-reactive CD4 T cells were visualized proportionally (Figure 1c) as well as analysed quantitatively (Figure 1d) at 3, 6 and 9 months after recovery from COVID-19.

From PBMCs collected 6 months after recovery from COVID-19, percentages of four-functional CD4 T cells which were induced by N, S1 and S2-peptides to upregulate IFN γ , IL-2, TNF α and CD154 were significantly increased compared to SARS-CoV-2 naïve-CD4 T-cell responses (Figure 1d, N $p < 0.0001$, S1 $p < 0.0001$, S2 $p < 0.0001$), as well as compared to representative responses from the 3 months recovered individuals (Figure 1d, N $p < 0.0001$, S1 $p < 0.0001$, S2 $p < 0.0001$). This trend of increasing poly-functional CD4 T cells after 6 months post recovery can also be visualized in Figure 1c, with total polyfunctional CD4 T cells increasing from 3 months to 6 months post recovery with all three peptide pools (Figure 1c “N” 0.027%–0.034%, “S1” 0.038%–0.058%, “S2” 0.007%–0.036%), as well as CD154⁺ IFN γ ⁺ IL-2⁺ TNF α ⁺ CD4 T cells (Figure 1c “N” “S1” “S2”-orange segment <3-month recovery, 6–9-month recovery).

Analyses of three-functional CD4 T-cell responses over time revealed N and S1 but not S2-targeted-peptide pools induced significant upregulation of IL-2, TNF α and CD154 but not IFN γ in CD4 T-cell responses, compared to SARS-CoV-2 naïve individuals; both N- and S1-induced responses were significantly increased at less than 3-month recovery (Figure 1d, N $p < 0.0001$, S1 $p < 0.0001$), which then significantly decrease at 6 months (Figure 1d, 6–9-month recovery, N $p = 0.007$, S1 $p = 0.015$) and

9 months (Figure 1d, 9–12 months recovery, N $p = 0.001$, S1 $p = 0.004$) post recovery, but nevertheless remain increased at all time-points over responses from SARS-CoV-2 naïve. In contrast, S2-induced three-functional CD4 T-cell responses involving IFN γ + IL-2+ CD154+ CD4 T cells but not TNF α were similar to N- and S1-induced responses and remained significantly increased compared to SARS-CoV-2 naïve responses at 6 (Figure 1d, 6–9-month recovery, N $p < 0.0001$, S1 $p < 0.0001$, S2 $p = 0.0002$) and 9 months (Figure 1d, 9–12 months recovery, N $p < 0.0001$, S1 $p = 0.0034$, S2 $p = 0.0007$) after recovery. Overall, three-functional CD4 T-cell responses (IFN γ + IL-2+ CD154+ TNF α - CD4 T cells) remained elevated and significantly increased at 6 months post recovery when compared to SARS-CoV-2 naïve (Figure 1d, 6–9-month recovery, N $p < 0.0001$, S1 $p = 0.0006$, S2 $p = 0.0047$). The increase in the proportion of IFN γ + IL-2+ CD154+ CD4 T cells over time in COVID-19-recovered individuals after stimulation with N and S1 peptide pools is represented in Figure 1c (“N” “S1”- purple segment).

Collectively, these data indicate that after 3 months of recovery, less polyfunctional Th1-directed responses to SARS-CoV-2 peptides decrease over time but more polyfunctional CD4 T-cell responses to SARS-CoV-2 involving IFN γ , IL-2 and CD154 and with or without TNF α continue to increase after more than 3 months of recovery from COVID-19.

Association of increased age with SARS-CoV-2-reactive CD4 T cells in individuals recovered from COVID-19

There is evidence to suggest that age is associated with an elevated CD4 T-cell immune response to SARS-CoV-2 in adults compared to children [24]; however, the CD4 T-cell immune response over time to SARS-CoV-2 throughout the ageing population who do not develop severe COVID-19 is less well studied. To investigate the effect of age on

FIGURE 1 N-, S1- and S2-induced immune activation over 9 months in individuals recovered from mild COVID-19. (a) Comparison of dual-functional activation marker-positive CD4 T-cell responses from three time-points over 9 months from SARS-CoV-2-recovered or naïve individuals is shown after 6-h incubation with N, S1 or S2 peptide pools. (b) Comparison of SARS-CoV-2 N-, S- and S2-related peptide-induced proliferative responses from PBMCs taken from SARS-CoV-2-recovered or naïve individuals. Data are shown as fold change compared to DMSO control proliferation (Stimulation Index, SI). Group <3-month recovery $n = 20$, 6–9-month recovery $n = 29$, 9–12 months recovery $n = 30$, SARS-COV-2 naïve $n = 27$. Data are represented as mean + 95% confidence intervals with differences between groups assessed using Mann–Whitney corrected for multiple comparisons using the Holm–Šidák method * $p < 0.05$, ** $p < 0.01$, *** $p < 0.001$, **** $p < 0.0001$. (c) Proportional analyses of three-to-four-functional marker-positive CD4 T-cell responses over 9 months from SARS-CoV-2 recovered or naïve individuals after incubation with N, S1 or S2 peptide pools. Data show mean values as a percentage of all three-to-four-functional CD4 T cells measured which is stated below each pie chart. The frequency of these poly-functional responses can be seen in D. Group <3-month recovery $n = 154$, 6–9-month recovery $n = 62$, 9–12-month recovery $n = 43$, SARS-COV-2 naïve $n = 327$. Data are represented as mean + 95% confidence intervals. Differences between groups were assessed using two-way ANOVA with Tukey’s multiple comparisons test * $p < 0.05$, ** $p < 0.01$, *** $p < 0.001$, **** $p < 0.0001$

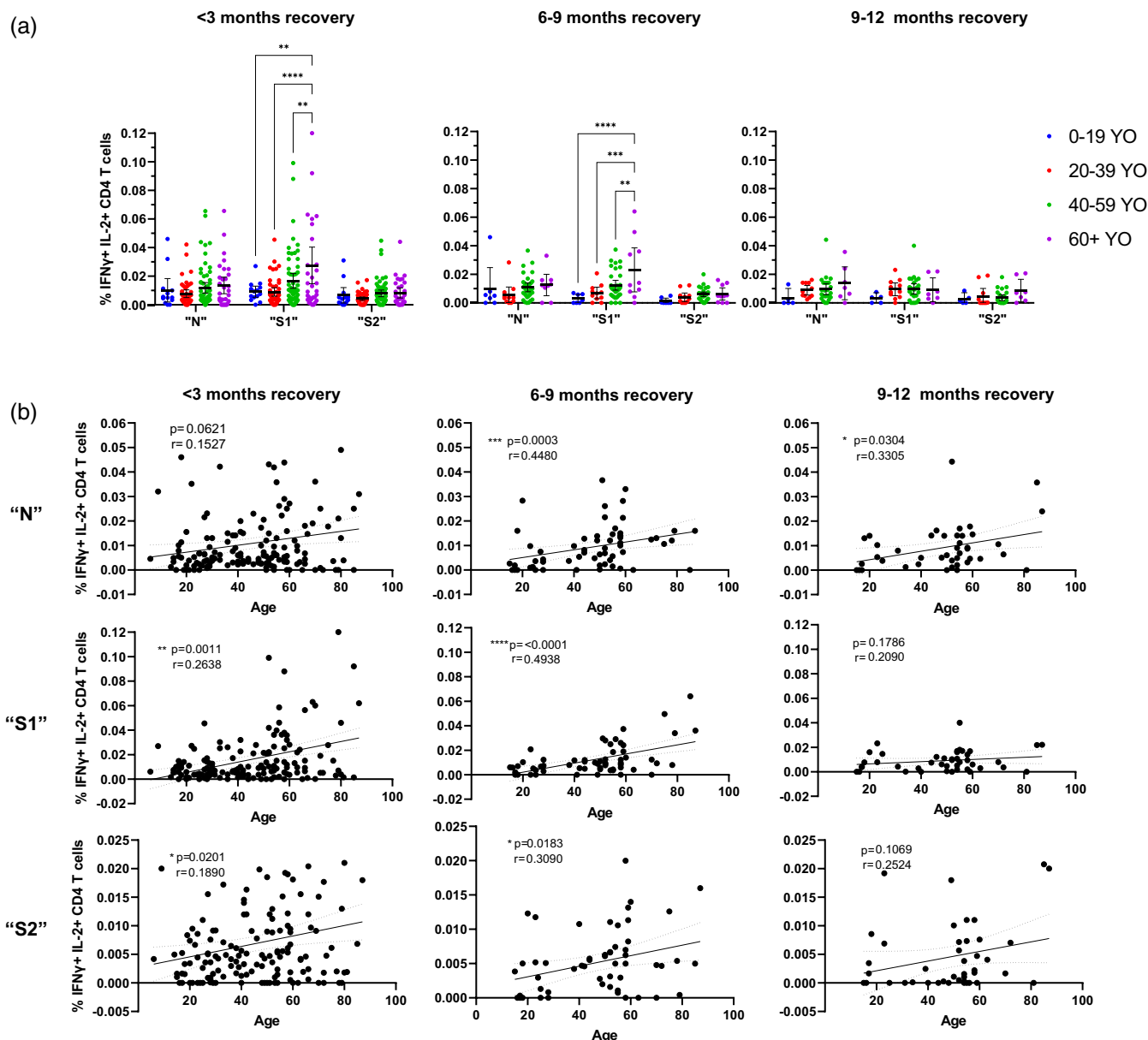


FIGURE 2 SARS-CoV-2-peptide-induced challenge responses involving dual-responding IFN γ + IL-2+ CD4 T cells are persistently elevated within older individuals recovered from mild COVID-19 for at least 9 months post recovery. (a) Comparison of the % of IFN γ + IL-2+ positive CD4 T cells after 6-h incubation with SARS-CoV-2 peptide pools N, S1 or S2 peptide pools from individuals recovered from mild COVID-19 less than 3 months, 6–9 months and 9–12 months post recovery from mild COVID-19 (IgG \geq 1). Differences between groups were assessed using two-way ANOVA with Tukey’s multiple comparison test. Group <3-month recovery 0–19 YO (years old) $n = 14$, 20–39 YO $n = 45$, 40–59 YO $n = 63$, 60+ YO $n = 31$, 6–9-month recovery 0–19 YO $n = 7$, 20–39 YO $n = 11$, 40–59 YO $n = 33$, 60+ YO $n = 10$, 9–12 months recovery 0–19 YO $n = 5$, 20–39 YO $n = 11$, 40–59 YO $n = 24$, 60+ YO $n = 7$. (b) Correlation and simple linear regression of % of IFN γ + IL-2+ CD4 T cells after SARS-CoV-2 peptide N, S1 and S2 challenge against age in individuals recovered from mild COVID-19 < 3-month post recovery $n = 122$, 6–9-month post recovery $n = 60$ and 9–12-month post recovery $n = 43$. Linear regression shown with 95% confidence intervals and effect of age analysed via two-tailed nonparametric Spearman correlation

the frequency of SARS-CoV-2-reactive CD4 T cells after incubation with SARS-CoV-2 peptides, individuals were grouped by age and CD4 T-cell responses analysed. The most robust SARS-CoV-2-induced CD4 T-cell responses were observed in recovered individuals older than 60 years with significantly higher amounts of SARS-CoV-2-reactive CD4 T cells at 3-, 6- and 9-month recovery (Figure 2a, 3a).

Notably, age was positively associated with significant increases in IFN γ + IL-2+ CD4 T cells at under 3 and 6 months post recovery upon challenge with S1 peptide against representative responses from all younger age groups (Figure 2a). More poly-functional age-specific increases in SARS-CoV-2-reactive CD4 T cells are seen in Figure 3a with individuals over the age of 60 having

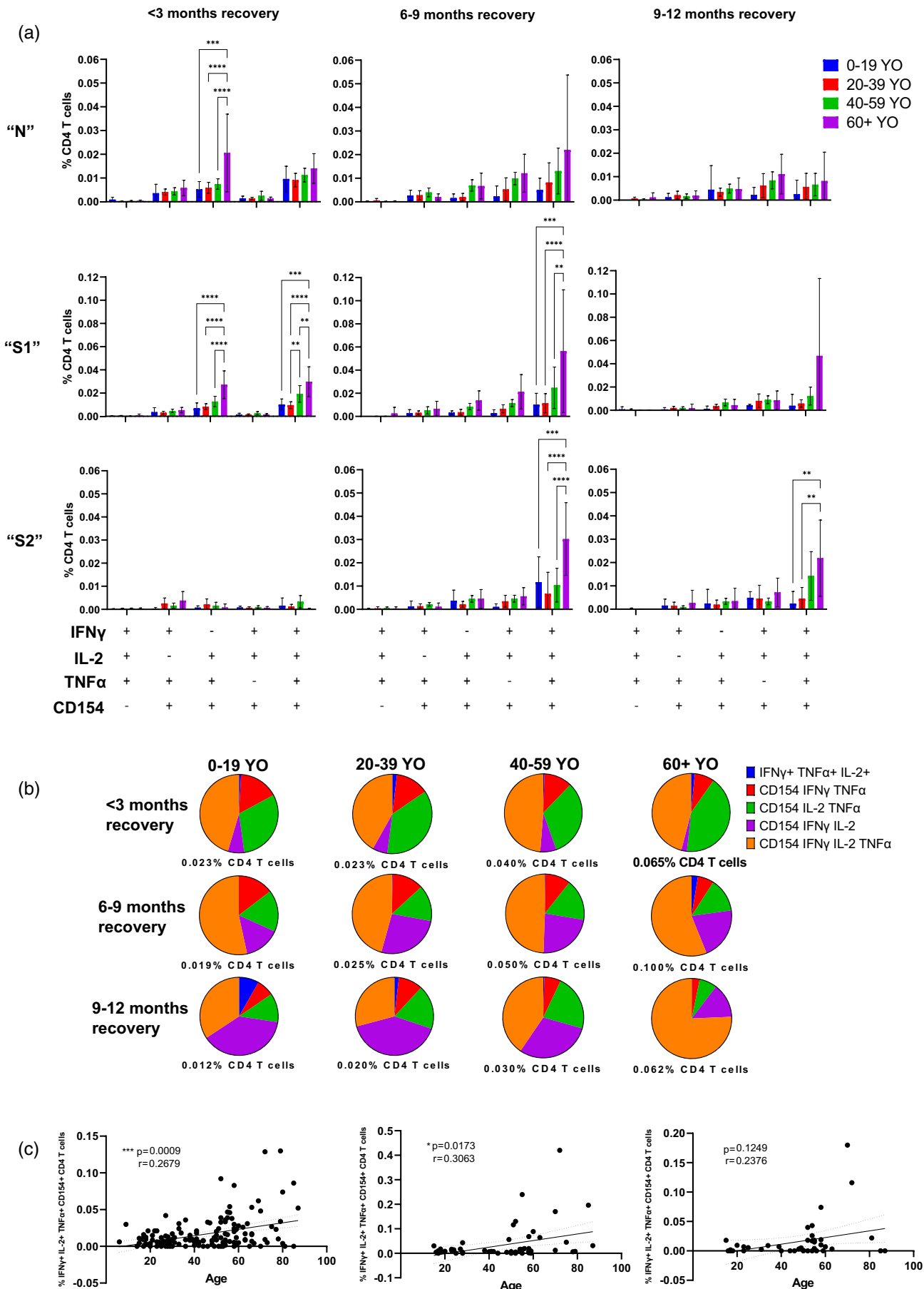


FIGURE 3 Legend on next page.

elevated responses above those of all other younger age groups at under 3-month recovery (Figure 3a, <3-month recovery, N and S1), 6-month recovery (Figure 3a, 6–9-month recovery, S1 and S2) and at 9 months post recovery with individuals over the age of 60 having elevated S2 responses over the younger age groups under 40 years of age (Figure 3a, 9–12 months recovery, S2).

Whilst increasing age groups are positively associated with the magnitude of particular polyfunctional CD4 T-cell responses to SARS-CoV-2 peptides, analyses of polyfunctional CD4 T-cell response profiles can indicate the quality of CD4 T-cell response, as well as the evolution over time. Analyses of the mean three-to-four-functional S1-response-profiles of all age groups are seen over time in Figure 3b. Poly-functional CD4 T-cell response profiles to S1-peptide pools did remain visually comparable between all age groups at 3 and 6 months of recovery and are seen in Figure 3b (<3-month recovery, 6–9-month recovery); however, older groups progressively recruited increased percentages of total three-to-four-functional CD4 T cells at every time-point (Figure 3b <3-month recovery, 6–9-month recovery and 9–12-month recovery-% CD4 T cells). The evolution of S1-reactive polyfunctional CD4 T-cell profile at 3-, 6- and 9-month recovery was comparable for age groups under 60 years of age with a general increase over time in the proportion of responding three-functional CD154⁺ IFN γ ⁺ IL-2⁺ CD4 T cells (Figure 3b 0–19 YO, 20–39 YO, 40–59 YO – purple segment); whereas, in individuals over the age of 60, more poly-functional CD154⁺ IFN γ ⁺ IL-2⁺ TNF α ⁺ CD4 T cells can be seen increasing over time (Figure 3b 60+ YO – orange segment) indicating that individuals of increased age can generate a more polyfunctional SARS-CoV-2 response profile.

To further analyse this association of increased age and increased SARS-CoV-2-peptide-induced CD4 T-cell responses, correlational analyses comparing age with CD4 T-cell responses were performed. Indeed 6 months after recovery, the strongest IFN γ ⁺ IL-2⁺ CD4 T-cell

responses were detected, which correlated positively with age in response to N (Figure 2b, n, $p = 0.0003$, $r = 0.45$), S1 (Figure 2b, S1, $p < 0.0001$, $r = 0.49$) and S2 peptide pool (Figure 2b, S2, $p = 0.0183$, $r = 0.31$). A similar pattern was detected for the more poly-functional IFN γ ⁺ IL-2⁺ TNF α ⁺ CD154⁺ CD4 T-cell response in the presence of S1 peptide pool (Figure 3c, S1). Correlational analyses only 3 months post recovery from COVID-19 showed only weak correlations upon S1-peptide challenge in IFN γ ⁺ IL-2⁺ CD4 T cells (Figure 2b, <3-month recovery, $p = 0.0011$, $r = 0.26$) and in IFN γ ⁺ IL-2⁺ TNF α ⁺ CD154⁺ CD4 T cells (Figure 2b, <3-month recovery, $p = 0.0009$, $r = 0.27$).

Taken together, the detectable increase in adaptive immune responses against SARS-CoV-2 peptides within older individuals compared to younger age groups, particularly those under the age of 40, indicates that age may be associated with the development of increased adaptive Th1-directed immune responses against SARS-CoV-2-infection even when COVID-19 symptoms are only mild or asymptomatic.

Increased Th1-adaptive immune response to SARS-CoV-2-peptide challenge in individuals over 40 years of age

To further investigate whether Th1-directed increases in SARS-CoV-2-challenge responses can be detected at younger ages and to further dissect differences seen thus far, individuals were grouped and multiple comparison analyses were performed on those above and below 40 years of age compared to age-matched SARS-CoV-2 naïve. Almost all analyses involving dual-functional activation markers at under 3-month recovery were significantly increased within the under 40-year olds, with two readouts remaining elevated in this group over SARS-CoV-2 naïve at 6 months post recovery (Figure 4a, 6–9-month recovery, N, CD154⁺ IFN γ ⁺ $p = 0.0248$ and S1

FIGURE 3 SARS-CoV-2-peptide-induced challenge responses involving highly poly-functional CD4 T cells with a Th1 phenotype are persistently elevated within older individuals recovered from mild COVID-19 for at least 9 months post recovery. (a) Comparison of polyfunctional CD4 T cells with 3–4 functional activation markers from individuals of different age groups at under 3-, 6–9- and 9–12-month recovery from mild COVID-19 after 6-h incubation with SARS-CoV-2 N, S1 or S2 peptide pools. Differences between groups were assessed using two-way ANOVA with Tukey's multiple comparisons test * $p < 0.05$, ** $p < 0.01$, *** $p < 0.001$, **** $p < 0.0001$. Data are represented as mean + 95% confidence intervals. Proportional analyses of the S1-induced polyfunctional CD4 T-cell responses can be seen in B with the mean values represented as a percentage of all three-to-four-functional responses. Group <3-month recovery 0–19 YO (years old) $n = 14$, 20–39 YO $n = 45$, 40–59 YO $n = 63$, 60+ YO $n = 31$. Group 6–9-month recovery 0–19 YO $n = 7$, 20–39 YO $n = 11$, 40–59 YO $n = 32$, 60+ YO $n = 8$. Group 9–12 months recovery 0–19 YO $n = 5$, 20–39 YO $n = 6$, 40–59 YO $n = 24$, 60+ YO $n = 7$. (c) Correlation and simple linear regression of % of IFN γ ⁺ IL-2⁺ TNF α ⁺ CD154⁺ CD4 T cells after SARS-CoV-2 peptide S1-challenge against age in individuals recovered from mild COVID-19 (<3 months post recovery $n = 122$ (left), 6–9 months post recovery $n = 60$ (middle) and 9–12 months post recovery $n = 43$ (right)). Linear regression shown with 95% confidence intervals and effect of age analysed via two-tailed nonparametric Spearman correlation

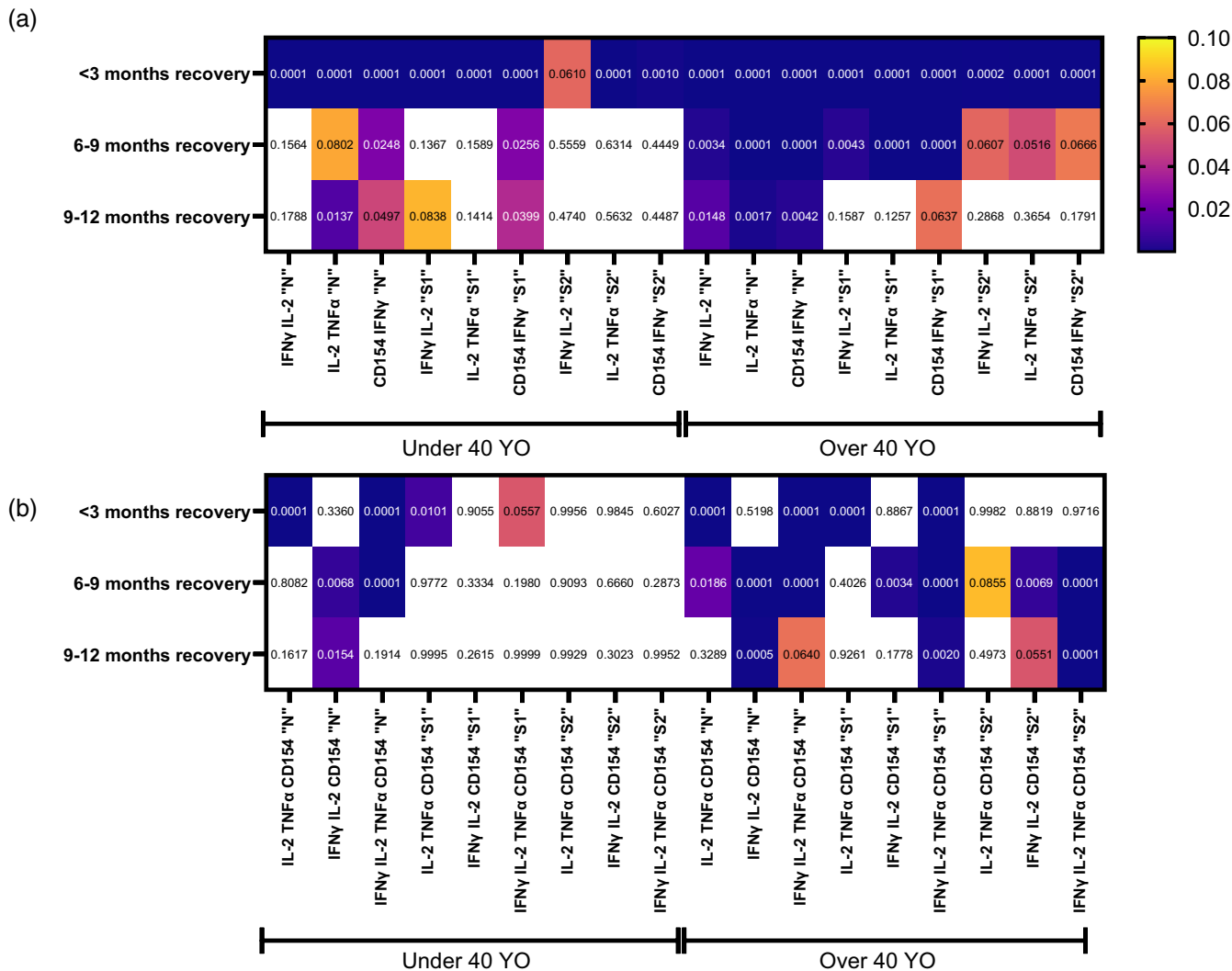


FIGURE 4 SARS-CoV-2-peptide challenge induced immune activation over 9 months post recovery from mild COVID-19 indicates persistently increased Th1-directed peptide challenge responses within individuals over 40 years of age. Heat-map of *p*-values of (a) dual-activation marker-positive CD4 T cells and with (b) poly-functional three-to-four activation marker-positive CD4 T cells from individuals either under or over the age of 40 at under 3, 6–9 and 9–12-month recovery from mild COVID-19 after 6-h incubation with SARS-CoV-2 N, S1 or S2-related peptide pools. Positive responses were compared against age-matched SARS-CoV-2 naïve responses using two-way ANOVA with Tukey's multiple comparison test. Legend shows *p*-value scale and exact *p*-values are shown within individual boxes. White values denote *p*-values above 0.1. Group Under 40 YO <3-month recovery $n = 59$, 6–9-month recovery $n = 18$, 9–12 months recovery $n = 12$, SARS-CoV-2 naïve $n = 121$. Group Over 40 YO <3-month recovery $n = 93$, 6–9-month recovery $n = 41$, 9–12 months recovery $n = 31$, SARS-CoV-2 naïve $n = 206$

CD154+ IFN γ + $p = 0.0256$) and three readouts at 9 months (Figure 4a, 9–12 months recovery, N, IL-2+ TNF α + $p = 0.0137$, CD154+ IFN γ + and S1 CD154+ IFN γ +). Within the over 40-year-old group, all dual-functional activation marker analyses were statistically increased at under 3-month recovery (Figure 4, A, <3-month recovery), all N- and S1-induced responses at 6 months post recovery (Figure 4a, N and S1, 6–9-month recovery) and all N-induced responses at 9 months post recovery (Figure 4a, n, 9–12 months recovery). These data indicate continued Th1-directed adaptive immune

capabilities against SARS-CoV-2 within both these age groups for at least 9 months post recovery from mild COVID-19.

The highly polyfunctional Th1-directed CD4 T-cell responses with three-to-four upregulated functional markers after N-challenge yielded similar patterns in both the under and over 40-year old with detectable responses at 3, 6 and 9 months post recovery (Figure 4b). However, S1- or S2-induced highly polyfunctional CD4 T-cell Th1 responses within the under 40-year-old group were not detectable when compared to age-matched

naïve responses at any time-point post recovery (Figure 4b, Under 40 YO, S1 and S2); this is in direct contrast with S-induced poly-functional responses from the over 40-year-old group with significantly increased amounts of SARS-CoV-2-reactive poly-functional CD4 T cells at 3, 6 and 9 months post recovery (Figure 4b, Over 40 YO, S1 and S2).

Collectively, these data indicate that SARS-CoV-2-induced Th1-directed adaptive immune responses to peptides generated from the spike and nucleocapsid continue to be present in individuals both under and over 40 years of age and remain detectable for at least 9 months post recovery. However, Th1-directed SARS-CoV-2-reactive CD4 T-cell challenge responses were more readily detected in aged individuals, especially with regard to highly-polyfunctional CD4 T-cell responses to peptides generated from the spike of the SARS-CoV-2 virus.

DISCUSSION

Our data indicate that increased age is associated with a more robust CD4 T-cell response to SARS-CoV-2-peptides with a Th1 phenotype in individuals with comparably mild COVID-19 symptoms and recovery time. Individuals over the age of 60 had significantly more SARS-CoV-2-reactive polyfunctional CD4 T cells with a Th1 phenotype than those of younger age groups which persisted for at least 9 months after recovery when compared to those under the age of 40.

Age has been associated as one of the largest risk factors for adverse COVID-19 outcomes [11,12], whilst adaptive immune responses involving SARS-CoV-2-specific T cells in convalescent individuals have been associated with milder COVID-19-symptoms [5–7]. Within this study, we show that in individuals who do not develop severe COVID-19, age is associated with a more robust polyfunctional Th1-CD4 T-cell response to SARS-CoV-2 peptides, indicating a protective role for SARS-CoV-2-directed Th1-CD4 T-cell responses with increasing age. A Th1-mediated response, as investigated here, has been regarded as a more protective phenotype when related to SARS-CoV-2 immunity [10]; however, it is also related to the general immunopathogenesis of more severe COVID-19 [25]. The involvement of Th1 immune responses, therefore, seems to be beneficial, however only when SARS-CoV-2-specific. It has also been reported that SARS-CoV-2 challenged T-cell responses from individuals recovered from mild COVID-19 lean towards a Th2-phenotype [26], which is also the case with children who similarly tend towards a Th2 phenotype, which may explain the generally milder COVID-19 symptoms seen

within the young [27]. Investigations into a Th2 phenotype were beyond the scope of this project and future investigations into age-specific differences in those recovered from mild COVID-19 should include Th2 phenotypic analyses.

Lower symptomatic infection and more beneficial outcome of SARS-CoV-2 infection have been associated with a robust adaptive immune response to viral antigen and a growing body of evidence indicates that a successful recovery from SARS-CoV-2-infection relies upon significant T-cell involvement [5,7] involving high avidity SARS-CoV-2-specific T cells [28]. In this study, we show that in individuals that recovered from mild COVID-19, SARS-CoV-2-reactive CD4 T cells have persistent and strong immune responses. The presence of SARS-CoV-2-reactive CD4 T cells is an indication of protective immunity from re-infection or severe course of infection [29,30]. Indeed, it has been demonstrated for other related respiratory viruses such as SARS-CoV-1 [31] that induced memory T cells which were detectable 17 years after infection [32]. As with data shown here, others have also shown SARS-CoV-2 antigen-induced T-cell responses in convalescent individuals which persist for at least 6 months and then begin to wane [33–36].

Polyfunctional T cells have been strongly linked with an increased ability to combat viral infections [22,23] and early protection, even before antibody production [21]. The highly polyfunctional SARS-CoV-2-reactive CD4 T cells upregulating functional activation markers IFN γ , IL-2 and CD154 (which were also either TNF α positive or negative) peaked after around 6-month recovery. This increase was also accompanied with a subsequent steady decrease in polyfunctional CD4 T cells which were not upregulating IFN γ . This shift towards a larger percentage of polyfunctional CD4 T cells upregulating IFN γ and TNF α could be attributed to differentiation towards a Th-1 central memory phenotype, which has been shown to be increasing until at least 6 months post symptom onset [33] and is consistent with polyfunctional CD4 T-cell responses in individuals infected and challenged with SARS-CoV-1-peptides [37].

The effect of ageing on the immune system can be characterized by a higher initial pro-inflammatory status alongside a progressive inability of the immune system to mount efficient responses [38]. A potential explanation for this is an association with age and a progressive decrease in naïve T-cell populations [18], which has also been associated with more severe COVID-19 symptoms [5]. It is possible that a reduction in naïve T cells with age leads to a delayed adaptive immune response to the novel SARS-CoV-2 antigens, which, even in those individuals who develop mild symptoms, have a dampened response to the virus, leading to an increase in viral

load, a more drawn-out recovery, and a more robust CD4 T-cell response to SARS-CoV-2 peptides upon challenge.

The increase in SARS-CoV-2-reactive polyfunctional CD4 T cells at 6 months post recovery was not accompanied with an increase in mono-functional (data not shown) or dual-functional activation marker-positive SARS-CoV-2-reactive CD4 T cells which were equal to or significantly decreased at 6-month recovery compared to at under 3-month recovery, yet still significantly increased over SARS-CoV-2-naïve responses. Corroborating publications towards a robust CD4 T-cell response at around 6-month recovery from COVID-19 also indicate the involvement of polyfunctional T cells involving IL-2, IFN γ and TNF α [29,30]. Additionally, decreases in mono-functional T-cell responses to S-peptides have been reported previously at 5 months after diagnosis of SARS-CoV-2-infection in health-care workers; however, poly-functional T-cell responses were not analysed [39]. Limitations within this study include the use of PBMCs to investigate SARS-CoV-2-reactive CD4 T cells, excluding resident memory T cells, which form an integral part of the immune homeostasis and cannot be sampled from venous blood [40]. Further studies should include longevity and age-associated SARS-CoV-2-reactive tissue-specific T-cell analyses.

Immune responses in SARS-CoV-2 naïve individuals in particular towards S but not towards N, have been reported, with around 40–60% of unexposed donors responding to SARS-CoV-2 peptides [41]. As it was not possible to exclude which of the SARS-CoV-2-naïve donors in this study had cross-reactive T cells, it is likely that analyses comparing S1 and S2-reactive CD4 T-cell responses in SARS-CoV-2-exposed, against SARS-CoV-2-naïve, are less significant than if those cross-reactive naïve individuals were excluded, as would be ideal.

Taken together, our findings indicate that in individuals who recovered with comparably mild COVID-19 symptoms, SARS-CoV-2-reactive CD4 T cells are still detectable at least 9 months after SARS-CoV-2 recovery. We show that age is associated with significantly more robust Th1-directed CD4 T-cell responses, with higher amounts of SARS-CoV-2-reactive polyfunctional CD4 T cells in individuals over the age of 60 compared to those under the age of 40. However, we show that some SARS-CoV-2-reactive CD4 T cells with three to four Th1-directed positive functional activation markers remain comparable or increased at over 9-month recovery when compared to at under 3-month recovery, including in individuals under 40 years of age. The reduced CD4 T-cell Th1 responses to SARS-CoV-2 peptide-challenge in individuals recovered from mild COVID-19 under the age of 40 raises questions regarding

the long-term protective immunity that natural infection imbues in the young.

ACKNOWLEDGEMENTS

Open Access funding enabled and organized by Projekt DEAL.

CONFLICT OF INTEREST

The authors declare no competing interests.

AUTHOR CONTRIBUTIONS

RGN, PZ, MS and BK were responsible for experimental design. RGN performed experiments with the help of LK, CS, JB and EB. RGN analysed the data and wrote the manuscript which was read and revised by all other authors. LS furthermore contributed to the project through the context of her master thesis. PZ and BK were responsible for project logistics, mechanical upkeep and technical advice. HS supervised the project and revised the manuscript.

DATA AVAILABILITY STATEMENT

The data that support the findings of this study are available from the corresponding author upon reasonable request.

ORCID

Ryan G. Natrass  <https://orcid.org/0000-0003-4263-8451>

REFERENCES

1. Hu B, Guo H, Zhou P, Shi ZL. Characteristics of SARS-CoV-2 and COVID-19. *Nat Rev Microbiol*. 2021;19(3):141–54.
2. Galani IE, Rovina N, Lampropoulou V, Triantafyllia V, Manioudaki M, Pavlos E, et al. Untuned antiviral immunity in COVID-19 revealed by temporal type I/III interferon patterns and flu comparison. *Nat Immunol*. 2021;22(1):32–40.
3. Hadjadj J, Yatim N, Barnabei L, Corneau A, Boussier J, Smith N, et al. Impaired type I interferon activity and inflammatory responses in severe COVID-19 patients. *Science*. 2020; 369(6504):718–24.
4. Pujadas E, Chaudhry F, McBride R, Richter F, Zhao S, Wajnberg A, et al. SARS-CoV-2 viral load predicts COVID-19 mortality. *Lancet Respir Med*. 2020;8(9):e70.
5. Rydyznski Moderbacher C, Ramirez SI, Dan JM, Grifoni A, Hastie KM, Weiskopf D, et al. Antigen-specific adaptive immunity to SARS-CoV-2 in acute COVID-19 and associations with age and disease severity. *Cell*. 2020; 183(4):996–1012 e19.
6. Sekine T, Perez-Potti A, Rivera-Ballesteros O, Stralin K, Gorin JB, Olsson A, et al. Robust T cell immunity in convalescent individuals with asymptomatic or mild COVID-19. *Cell*. 2020;183(1):158–68 e14.
7. Zhao J, Zhao J, Perlman S. T cell responses are required for protection from clinical disease and for virus clearance in

- severe acute respiratory syndrome coronavirus-infected mice. *J Virol.* 2010;84(18):9318–25.
8. Zimmerli SC, Harari A, Cellerai C, Vallelian F, Bart PA, Pantaleo G. HIV-1-specific IFN-gamma/IL-2-secreting CD8 T cells support CD4-independent proliferation of HIV-1-specific CD8 T cells. *Proc Natl Acad Sci U S A.* 2005; 102(20):7239–44.
 9. Perreau M, Levy Y, Pantaleo G. Immune response to HIV. *Curr Opin HIV AIDS.* 2013;8(4):333–40.
 10. Zhao J, Zhao J, Mangalam AK, Channappanavar R, Fett C, Meyerholz DK, et al. Airway memory CD4(+) T cells mediate protective immunity against emerging respiratory coronaviruses. *Immunity.* 2016;44(6):1379–91.
 11. Docherty AB, Harrison EM, Green CA, Hardwick HE, Pius R, Norman L, et al. Features of 20 133 UK patients in hospital with covid-19 using the ISARIC WHO clinical characterisation protocol: prospective observational cohort study. *BMJ.* 2020; 369:m1985.
 12. Grasselli G, Zangrillo A, Zanella A, Antonelli M, Cabrini L, Castelli A, et al. Baseline characteristics and outcomes of 1591 patients infected with SARS-CoV-2 admitted to ICUs of the Lombardy region. *Italy JAMA.* 2020;323(16):1574–81.
 13. Centre for Disease Control and Prevention [Risk for COVID-19 Infection, Hospitalization, and Death By Age Group] [Cited 2021 July 5]. Available from: <https://www.cdc.gov/coronavirus/2019-ncov/covid-data/investigations-discovery/hospitalization-death-by-age.html>.
 14. Goronzy JJ, Li G, Yu M, Weyand CM. Signaling pathways in aged T cells - a reflection of T cell differentiation, cell senescence and host environment. *Semin Immunol.* 2012;24(5): 365–72.
 15. Chen Z, John WE. T cell responses in patients with COVID-19. *Nat Rev Immunol.* 2020;20(9):529–36.
 16. Zhou Y, Fu B, Zheng X, Wang D, Zhao C, Qi Y, et al. Pathogenic T-cells and inflammatory monocytes incite inflammatory storms in severe COVID-19 patients. *Natl Sci Rev.* 2020;7(6): 998–1002.
 17. Mehta P, McAuley DF, Brown M, Sanchez E, Tattersall RS, Manson JJ, et al. COVID-19: consider cytokine storm syndromes and immunosuppression. *Lancet.* 2020;395(10229):1033–4.
 18. Briceno O, Lissina A, Wanke K, Afonso G, von Braun A, Ragon K, et al. Reduced naive CD8(+) T-cell priming efficacy in elderly adults. *Aging Cell.* 2016;15(1):14–21.
 19. Tan AT, Linster M, Tan CW, Le Bert N, Chia WN, Kunasegaran K, et al. Early induction of functional SARS-CoV-2-specific T cells associates with rapid viral clearance and mild disease in COVID-19 patients. *Cell Rep.* 2021;34(6): 108728.
 20. Streeck H, Schulte B, Kummerer BM, Richter E, Holler T, Fuhrmann C, et al. Infection fatality rate of SARS-CoV2 in a super-spreading event in Germany. *Nat Commun.* 2020; 11(1):5829.
 21. Swadling L, Diniz MO, Schmidt NM, Amin OE, Chandran A, Shaw E, et al. Pre-existing polymerase-specific T cells expand in abortive seronegative SARS-CoV-2. *Nature.* 2022;601(7891): 110–7.
 22. Porichis F, Kaufmann DE. HIV-specific CD4 T cells and immune control of viral replication. *Curr Opin HIV AIDS.* 2011;6(3):174–80.
 23. Betts MR, Nason MC, West SM, De Rosa SC, Migueles SA, Abraham J, et al. HIV nonprogressors preferentially maintain highly functional HIV-specific CD8+ T cells. *Blood.* 2006; 107(12):4781–9.
 24. Cohen CA, Li APY, Hachim A, Hui DSC, Kwan MYW, Tsang OTY, et al. SARS-CoV-2 specific T cell responses are lower in children and increase with age and time after infection. *Nat Commun.* 2021;12(1):4678.
 25. Li Q, Guan X, Wu P, Wang X, Zhou L, Tong Y, et al. Early transmission dynamics in Wuhan, China, of novel coronavirus-infected pneumonia. *N Engl J Med.* 2020;382(13):1199–207.
 26. Shahbaz S, Xu L, Sligl W, Osman M, Bozorgmehr N, Mashhour S, et al. The quality of SARS-CoV-2-specific T cell functions differs in patients with mild/moderate versus severe disease, and T cells expressing Coinhibitory receptors are highly activated. *J Immunol.* 2021;207(4):1099–111.
 27. Elahi S. Neonatal and Children's immune system and COVID-19: biased immune tolerance versus resistance strategy. *J Immunol.* 2020;205(8):1990–7.
 28. Bacher P, Rosati E, Esser D, Martini GR, Saggau C, Schiminsky E, et al. Low-avidity CD4(+) T cell responses to SARS-CoV-2 in unexposed individuals and humans with severe COVID-19. *Immunity.* 2020;53(6):1258–71 e5.
 29. Jung JH, Rha MS, Sa M, Choi HK, Jeon JH, Seok H, et al. SARS-CoV-2-specific T cell memory is sustained in COVID-19 convalescent patients for 10 months with successful development of stem cell-like memory T cells. *Nat Commun.* 2021;12(1):4043.
 30. Zuo J, Dowell AC, Pearce H, Verma K, Long HM, Begum J, et al. Robust SARS-CoV-2-specific T cell immunity is maintained at 6 months following primary infection. *Nat Immunol.* 2021;22(5):620–6.
 31. Fan YY, Huang ZT, Li L, Wu MH, Yu T, Koup RA, et al. Characterization of SARS-CoV-specific memory T cells from recovered individuals 4 years after infection. *Arch Virol.* 2009;154(7):1093–9.
 32. Le Bert N, Tan AT, Kunasegaran K, Tham CYL, Hafezi M, Chia A, et al. SARS-CoV-2-specific T cell immunity in cases of COVID-19 and SARS, and uninfected controls. *Nature.* 2020; 584(7821):457–62.
 33. Dan JM, Mateus J, Kato Y, Hastie KM, Yu ED, Faliti CE, et al. Immunological memory to SARS-CoV-2 assessed for up to 8 months after infection. *Science.* 2021;371(6529):eabf4063.
 34. Wheatley AK, Juno JA, Wang JJ, Selva KJ, Reynaldi A, Tan HX, et al. Evolution of immune responses to SARS-CoV-2 in mild-moderate COVID-19. *Nat Commun.* 2021;12(1):1162.
 35. Sherina N, Piralla A, Du L, Wan H, Kumagai-Braesch M, Andrell J, et al. Persistence of SARS-CoV-2-specific B and T cell responses in convalescent COVID-19 patients 6-8 months after the infection. *Med (N Y).* 2021;2(3):281–95 e4.
 36. Files JK, Sarkar S, Fram TR, Boppana S, Sterrett S, Qin K, et al. Duration of post-COVID-19 symptoms is associated with sustained SARS-CoV-2-specific immune responses. *JCI. Insight.* 2021;6(15): e151544.
 37. Oh HL, Chia A, Chang CX, Leong HN, Ling KL, Grotenbreg GM, et al. Engineering T cells specific for a dominant severe acute respiratory syndrome coronavirus CD8 T cell epitope. *J Virol.* 2011;85(20):10464–71.
 38. Fulop T, Larbi A, Dupuis G, Le Page A, Frost EH, Cohen AA, et al. Immunosenescence and Inflamm-aging as two sides of the same coin: friends or foes? *Front Immunol.* 2017;8:1960.



39. Casado JL, Vizcarra P, Velasco H, Hammerle J, McGee A, Fernandez-Escribano M, et al. Progressive and parallel decline of humoral and T-cell immunity in convalescent healthcare workers with asymptomatic or mild-to-moderate severe acute respiratory syndrome coronavirus 2 infection. *J Infect Dis.* 2021;224(2):241–5.
40. Masopust D, Soerens AG. Tissue-resident T cells and other resident leukocytes. *Annu Rev Immunol.* 2019;37: 521–46.
41. Grifoni A, Weiskopf D, Ramirez SI, Mateus J, Dan JM, Moderbacher CR, et al. Targets of T cell responses to SARS-CoV-2 coronavirus in humans with COVID-19 disease and unexposed individuals. *Cell.* 2020;181(7): 1489–501 e15.
42. World Health Organisation [WHO Situation Reports; Jan 2020] [Cited 2021 July 5]. Available from: [https://www.who.](https://www.who.int/docs/default-source/coronaviruse/situation-reports/20200128-sitrep-8-ncov-cleared.pdf?sfvrsn=8b671ce5_2)

[int/docs/default-source/coronaviruse/situation-reports/20200128-sitrep-8-ncov-cleared.pdf?sfvrsn=8b671ce5_2.](https://www.who.int/docs/default-source/coronaviruse/situation-reports/20200128-sitrep-8-ncov-cleared.pdf?sfvrsn=8b671ce5_2)

SUPPORTING INFORMATION

Additional supporting information may be found in the online version of the article at the publisher's website.

How to cite this article: Natrass RG, Krafft L, Zjablovskaja P, Schuster M, Kasmajour B, Sarisoy C, et al. The effect of age on the magnitude and longevity of Th1-directed CD4 T-cell responses to SARS-CoV-2. *Immunology.* 2022;166(3):327–40. <https://doi.org/10.1111/imm.13475>