

---

**Supplementary information**

---

**Transgenic ferret models define pulmonary ionocyte diversity and function**

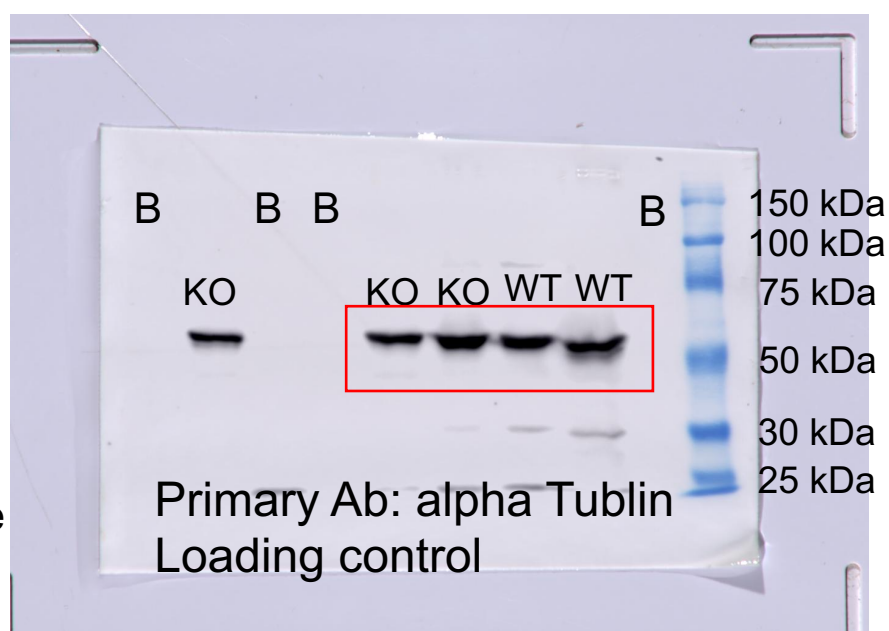
---

In the format provided by the  
authors and unedited

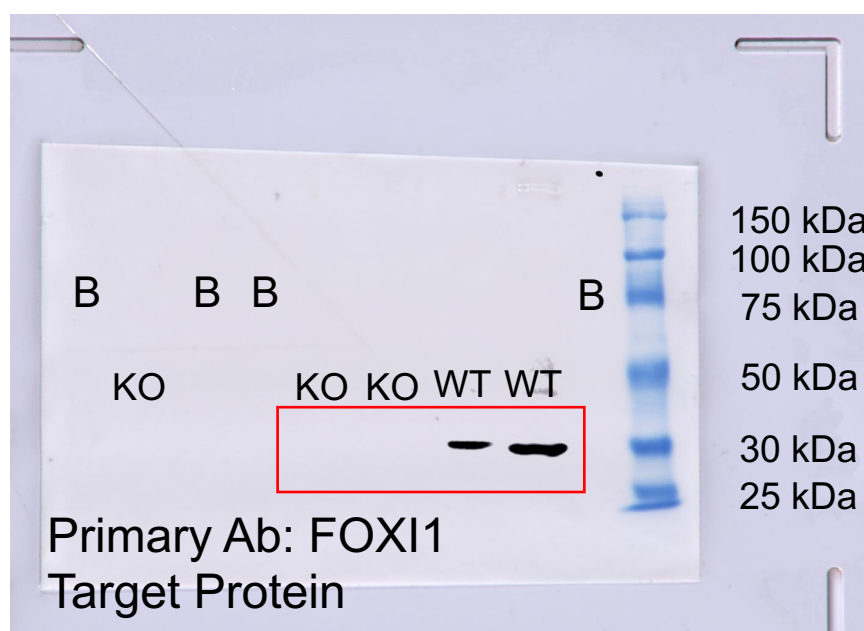
# Supplementary Information Figure 1: Raw Data Gels

WT: WT ferret Kidney lysate; KO: *FOXI1*-KO ferret Kidney lysate; B: Blank

Device: Biorad WB  
Gel: 8% Gel  
Denature: 95°C, 5 mins  
Electrophoresis:  
80V, 20 mins; 100V, 1hr  
Transfer:  
200 mA, 90 mins, on ice

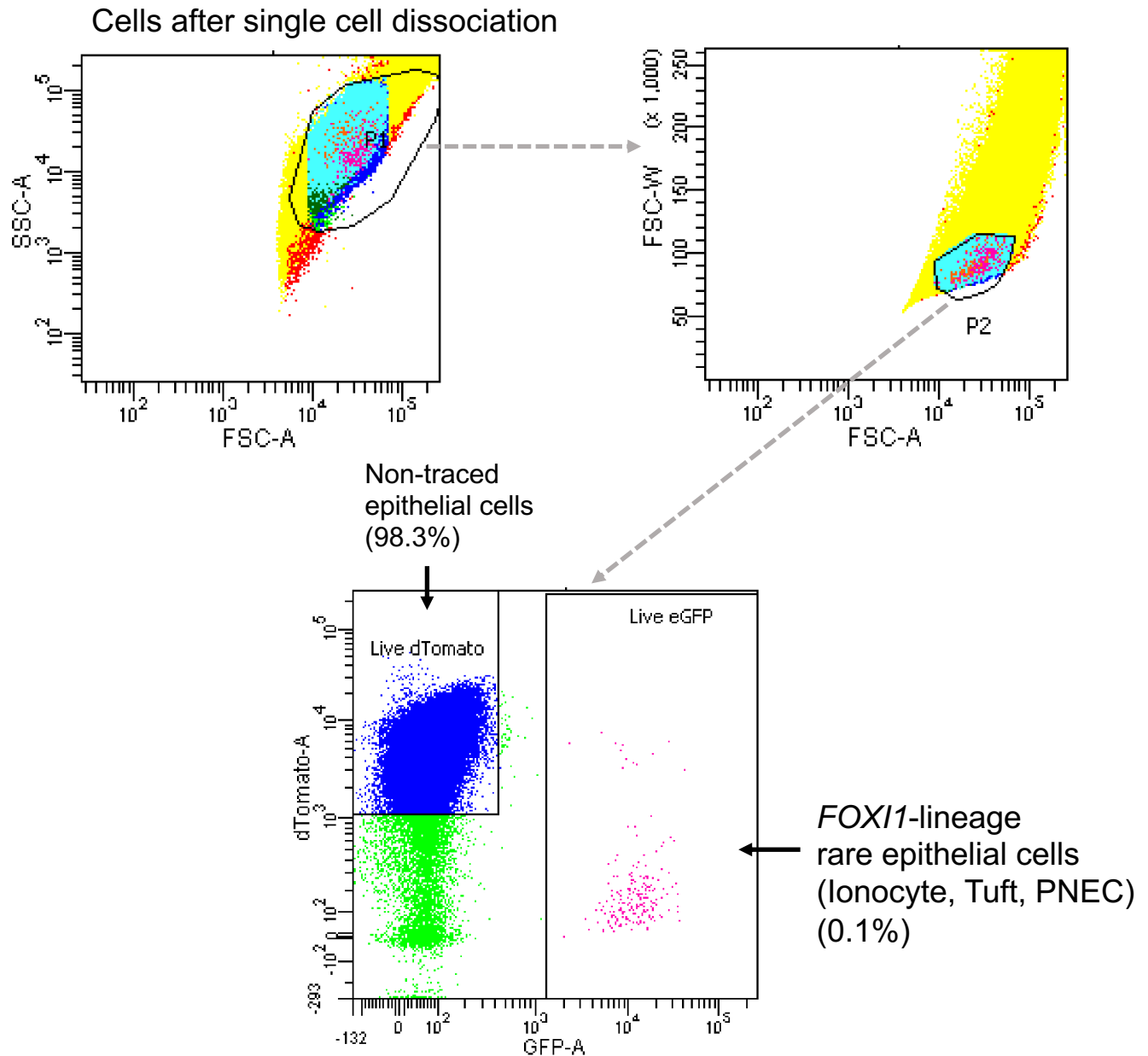


Controls were run on the same gel as loading control. Red rectangle indicates how gels were cropped for final figure.



**SI Figure 1:** Uncropped images of Western blots. Kidney tissue lysates from *FOXI1*-KO and WT animals were collected and subjected to Western blotting with FOXI1 antibody. n = 2 ferret donors in WT group; n = 3 ferret donors in *FOXI1*-KO group.

# Supplementary Information Figure 2: *FOXI1*-lineage cells enrichment gate strategy



**SI Figure 2:** Gating strategy to sort *FOXI1*-lineage (eGFP positive) cells from non-traced epithelial cells. ALI cultures were from ROSA TG:: *FOXI1*-Cre<sup>ERT2</sup> ferrets and *FOXI1*-lineage (eGFP positive) cells were induced with hydroxytamoxifen.