

ORIGINAL RESEARCH

Open Access



MR-based motion correction for cardiac PET parametric imaging: a simulation study

Rong Guo^{1,2,5}, Yoann Petibon^{3,4}, Yixin Ma^{1,2,6}, Georges El Fakhri^{3,4}, Kui Ying^{1,2} and Jinsong Ouyang^{3,4*} 

* Correspondence:

ouyang.jinsong@mgh.harvard.edu

³Gordon Center for Medical Imaging, Department of Radiology, Massachusetts General Hospital, Boston, MA 02114, USA

⁴Department of Radiology, Harvard Medical School, Boston, MA 02115, USA

Full list of author information is available at the end of the article

Abstract

Background: Both cardiac and respiratory motions bias the kinetic parameters measured by dynamic PET. The aim of this study was to perform a realistic positron emission tomography-magnetic resonance (PET-MR) simulation study using 4D XCAT to evaluate the impact of MR-based motion correction on the estimation of PET myocardial kinetic parameters using PET-MR. Dynamic activity distributions were obtained based on a one-tissue compartment model with realistic kinetic parameters and an arterial input function. Realistic proton density/T1/T2 values were also defined for the MRI simulation. Two types of motion patterns, cardiac motion only (CM) and both cardiac and respiratory motions (CRM), were generated. PET sinograms were obtained by the projection of the activity distributions. PET image for each time frame was obtained using static (ST), gated (GA), non-motion-corrected (NMC), and motion-corrected (MC) methods. Voxel-wise unweighted least squares fitting of the dynamic PET data was then performed to obtain K_1 values for each study. For each study, the mean and standard deviation of K_1 values were computed for four regions of interest in the myocardium across 25 noise realizations.

Results: Both cardiac and respiratory motions introduce blurring in the PET parametric images if the motion is not corrected. Conventional cardiac gating is limited by high noise level on parametric images. Dual cardiac and respiratory gating further increases the noise level. In contrast to GA, the MR-based MC method reduces motion blurring in parametric images without increasing noise level. It also improves the myocardial defect delineation as compared to NMC method. Finally, the MR-based MC method yields lower bias and variance in K_1 values than NMC and GA, respectively. The reductions of K_1 bias by MR-based MC are 7.7, 5.1, 15.7, and 29.9% in four selected 0.18-mL myocardial regions of interest, respectively, as compared to NMC for CRM. MR-based MC yields 85.9, 75.3, 71.8, and 95.2% less K_1 standard deviation in the four regions, respectively, as compared to GA for CRM.

Conclusions: This simulation study suggests that the MR-based motion-correction method using PET-MR greatly reduces motion blurring on parametric images and yields less K_1 bias without increasing noise level.

Keywords: MR-based PET motion correction, Cardiac PET parametric imaging, PET-MR, Myocardial perfusion

Background

Dynamic PET imaging is a powerful technique allowing to obtain physiological information using kinetic modeling. Cardiac PET perfusion tracers, including ¹³N-ammonia, ¹⁵O-water, ⁸²Rb, and ¹⁸F-flurpiridaz, can be used to measure

myocardial blood flow (MBF) in order to evaluate the presence and severity of ischemia [1–6]. However, heart motion caused by the pumping action of heart chambers (cardiac motion) and breathing (respiratory motion) can severely blur the PET emission data and generate image artifacts if no motion correction is applied. This can in turn lead to significant bias on the estimation of MBF.

There have been many attempts to develop practical and effective methodology to remove the effects of heart motion [7–11]. Cardiac and/or respiratory gating strategies that “freeze” motion is popular in static PET but have not been effective or successful in dynamic PET because of the substantial noise associated with rejecting a large number of detected PET events in short time frames. Therefore, how to estimate and correct for both cardiac and respiration motions remains an important research topic for cardiac PET imaging. In the past, a number of cardiac/respiratory motion correction methods have been developed for PET. Qiao et al. [12] developed a 4D model that incorporates motion information to produce a motion-free image with all acquired data and evaluated their approach using simulation and phantom studies. Gigengack et al. [13] developed a motion correction method based on dual gating and mass-preserving hyper-elastic imaging registration and evaluated their method on 21 subjects. Lamare et al. [14] evaluated different schemes of combining gated data to obtain motion-free cardiac PET images using dual gated acquisitions; Feng et al. [15] developed dual respiratory and cardiac motion correction methods after, during, and before image reconstruction and evaluated their performance using the Monte Carlo simulation. The emergence of positron emission tomography-magnetic resonance (PET-MR) scanners offers an elegant solution to PET motion correction. A number of MR-based cardiac/respiratory motion correction methods have been developed for cardiac PET. Wang et al. [16] proposed a dual respiratory and cardiac motion correction scheme for myocardial perfusion PET and studied its effectiveness on myocardial perfusion defect detection. Küstner et al. [17] performed respiratory and cardiac PET motion correction with a motion model derived from a simultaneously acquired MR data on 36 subjects. Kolbitsch et al. [18] performed MR-based respiratory and cardiac PET motion correction in simultaneous ^{18}F -FDG PET-MR scans of a canine model of myocardial infarct and one human subject. However, none of these studies has evaluated the impact of MR-based cardiac/respiratory motion correction on PET parametric imaging. In this work, the performance of MR-based motion correction was evaluated on parametric myocardial perfusion PET imaging. Realistic PET and MR simulations, in which the true kinetic parameters were known, were performed for such purpose.

Methods

Figure 1 shows the flowchart depicting the main steps in our study, which include both PET and MR simulations, motion estimation, PET reconstruction, motion correction, and estimation of parametric images.

PET simulation

PET simulation was performed using the anthropomorphic 4D XCAT phantom [19], which mainly includes heart, lung, liver, and soft-tissue compartments. A non-transmural defect (~ 4 mm across the thickness of the myocardium and ~ 1.2 cm along

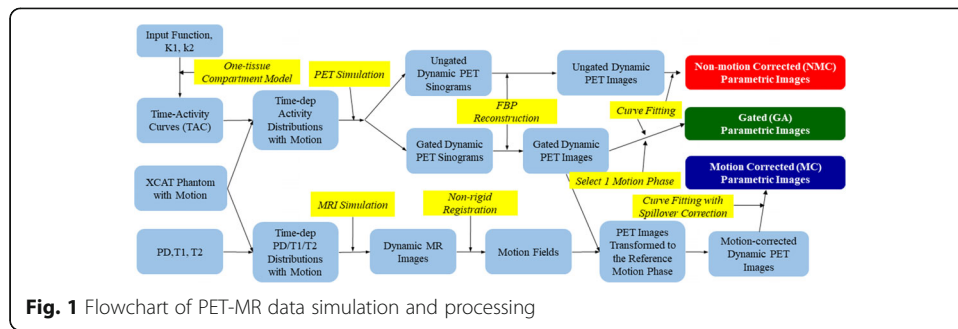


Fig. 1 Flowchart of PET-MR data simulation and processing

the myocardial wall) was added to the mid-anterolateral myocardium of the phantom. The simulations were performed to mimic a patient scan on a whole-body Siemens Biograph mMR PET-MR scanner. The PET system has 8 rings of 56 blocks of 8×8 lutetium oxyorthosilicate crystals of size $4 \times 4 \times 20 \text{ mm}^3$. The PET field of view (FOV) is 59.4 and 25.8 cm in transaxial and axial directions, respectively. The MR system consists of a whole-body superconductive 3-T magnet, an actively shielded whole-body gradient system, and a RF body coil.

For the PET simulation, realistic K_1 , k_2 , and attenuation coefficient values were first assigned for each organ or tissue type. Based on a previously reported ^{13}N -ammonia cardiac study [20], we assigned $K_1 = 0.80 \text{ mL min}^{-1} \text{ mL}^{-1}$, $k_2 = 0.17 \text{ min}^{-1}$ to the healthy myocardium and $K_1 = 0.36 \text{ mL min}^{-1} \text{ mL}^{-1}$, $k_2 = 0.21 \text{ min}^{-1}$ to the non-transmural defect. Likewise, an arterial input function (see the true input function in Fig. 2), $C_p(t)$, was defined based on a previous human ^{13}N -ammonia perfusion study [21]. Second, a one-tissue compartment model was used to generate a time-activity curve (TAC) of tissue for each voxel (see Fig. 2 for the TACs of the healthy myocardium and the myocardial defect), $C_t^i(t)$, using $C_t^i(t) = K_1^i C_p(t) \otimes e^{-k_2^i t}$, where i is the voxel index. The dynamic (i.e., time-dependent) PET activity distributions were grouped into a series of $8 \times 5\text{-s}$, $4 \times 10\text{-s}$, $2 \times 20\text{-s}$, $1 \times 40\text{-s}$, $1 \times 2\text{-min}$, and $1 \times 4\text{-min}$ time frames. Third, the motion produced by the XCAT phantom was introduced to generate dynamic PET

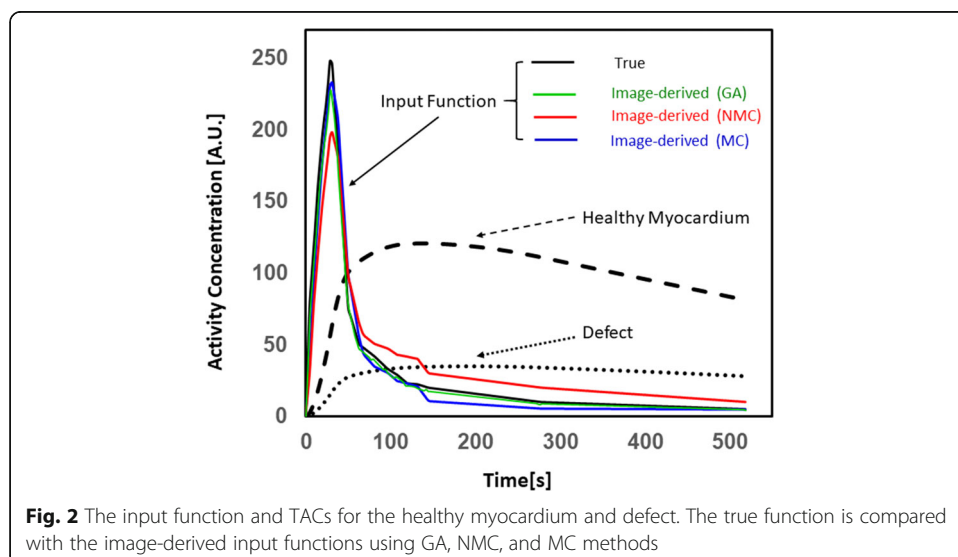


Fig. 2 The input function and TACs for the healthy myocardium and defect. The true function is compared with the image-derived input functions using GA, NMC, and MC methods

activity distributions with motion. There are two types of breathing patterns, belly and rib-cage breathing. The former has little impact on the heart motion. Therefore, two different motion studies were performed, one with cardiac motion only (CM) and the other with both cardiac and respiratory motions (CRM). Cardiac motion cycle was evenly divided into ten and five motion phases for CM and CRM, respectively. Respiratory motion cycles were evenly divided into five motion phases. As a result, a total of ten and 25 motion phases were defined, for CM and CRM, respectively. Additionally, a static (ST) study without motion was performed to serve as the reference. Fourth, at each motion phase, a PET forward model, which incorporates gamma ray attenuation and point spread function (PSF) modeling, was used to generate noise-free dynamic sinograms by forward-projection of the dynamic PET activity distributions using:

$$\bar{\mathbf{y}} = AGP\mathbf{x}$$

where $\mathbf{x} = [x_1, x_2, \dots, x_I]^T$ contains the activity concentration in all I voxels; $\bar{\mathbf{y}} = [\bar{y}_1, \bar{y}_2, \dots, \bar{y}_J]^T$ contains the estimated true counts in all J sinogram bins; matrix P of size $I \times I$ models PSF blurring effects in the image space [full width at half maximum (FWHM) of 4.5 mm was used]; matrix G of size $J \times I$ models the geometric forward-projection, which was implemented using Siddon's ray-tracing method [22]; and diagonal matrix A of size $J \times J$ provides the attenuation factor for each sinogram bin. Both scatter and random events were not accounted for in the PET simulation. The sinogram data were scaled so that the total number of true counts in the 4-min time frame, which is the last time frame, is 50,000 for a 3-mm slice. This corresponds to a PET study performed on an adult with an injection dose of about 370–555 MBq. Poisson noise was then added to each sinogram bin based on the mean counts in the bin to generate 25 different noise realizations of sinograms.

MR simulation

Similar to the PET simulation, realistic proton density (PD) and T1 and T2 parameters (3 T) were assigned to each organ or tissue type for the MRI simulation. The PD (percentage relative to water) and T1 and T2 values are 67% and 830 and 62 ms, respectively, for the healthy myocardium and 77% and 1080 and 82 ms, respectively, for the myocardial defect [23]. Motion from the XCAT phantom was introduced to generate motion-dependent PD/T1/T2 distributions. The MRI simulation in each motion phase was performed using MRiLab [24], an open-source software based on MATLAB. MRI noise, which is due to the signal variations in the receiver chain caused by thermal noise and eddy currents in the imaging object, was not modeled in this study. The standard gradient echo (GRE) sequence was used (TR = 9.56 ms, TE = 2.4 ms, FA = 46°). The simulated MR k -space data were then reconstructed to obtain the MR image for each motion phase.

Motion correction

A reference motion phase was selected for each type of motion, i.e., CM or CRM (end-diastole for CM; end-diastole/end-exhalation for CRM). The motion fields transforming the MR image volume from a given motion phase to the reference motion phase were obtained by applying a non-rigid image registration technique, which is based on the Demons algorithm [25–27].

Four different studies using static (ST), gated (GA), non-motion-corrected (NMC), and motion-corrected (MC) data were performed. For the ST study, the PET data, in which neither motion nor noise was introduced, were reconstructed using filtered back-projection (FBP) for each time frame. For the GA study, only the data corresponding to the reference motion phase were reconstructed using FBP. For the NMC study, the PET data generated in each motion phase were first reconstructed using FBP in each time frame. The resulting PET images across all the motion phases were then summed for the time frame. For the ST, GA, and NMC studies, the attenuation map in the reference motion phase was used during the PET reconstruction. For the MC study, the attenuation map for a given motion phase was obtained by transforming the reference attenuation map to the motion phase using the corresponding motion fields measured by MRI. The reconstructed PET image by FBP for each motion phase was transformed to the reference motion phase using the motion fields measured by MRI in each time frame. The final motion-corrected PET image in the time frame was then obtained by summing up all the transformed PET images (including the one in the reference motion phase). Because the goal of our study is to assess only the impact of motion correction (including correction on both the emission data and attenuation map) on dynamic PET, we used the same attenuation map, which was generated by the XCAT phantom, for both the simulations and reconstructions.

Estimation of kinetic parameters

For each study, a myocardium mask was created by applying a threshold to the static PET image reconstructed from the 4-min time frame (the last time frame). To account for the spillover effects from both the left ventricle (LV) and right ventricle (RV) blood pools, the measured myocardial activity concentration in time frame t_m can be modeled as:

$$C_{\text{PET}}^i(t_m) = f_{\text{LV}}^i \cdot C_{\text{LV}}(t_m) + f_{\text{RV}}^i \cdot C_{\text{RV}}(t_m) + (1 - f_{\text{LV}}^i - f_{\text{RV}}^i) \frac{1}{\Delta t_m} \int_{\Delta t_m} C_t^i(\tau) d\tau$$

where $C_{\text{LV}}(t_m)$ ($C_{\text{RV}}(t_m)$) is the LV (RV) TAC, f_{LV}^i (f_{RV}^i) is the fractional spillover from LV (RV) in voxel i that accounts for the contamination of myocardial TACs by activity from the ventricle blood pools due to the limited PET spatial resolution, and Δt_m is the duration of the time frame. Afterwards, voxel-wise K_1 values were estimated within the myocardium mask by unweighted least squares curve-fitting of the reconstructed myocardial PET TACs [i.e., $C_{\text{PET}}^i(t_m)$] using MATLAB CFTOOL. We defined four 0.18-mL regions of interest (ROIs) at different locations in the myocardium. Each ROI was carefully chosen to be away from the edges of the true myocardium. For each ROI and each method (i.e., ST, GA, NMC, and MC), the average K_1 value was first computed for each noise realization. The mean (\bar{K}_1) and standard deviation (σ_{K_1}) of K_1 values were then computed across all the noise realizations using:

$$\bar{K}_1 = \frac{1}{N} \sum_n K_1^n, \quad \sigma_{K_1} = \sqrt{\frac{1}{N-1} \sum_n (K_1^n - \bar{K}_1)^2},$$

where K_1^n is the average K_1 value within the ROI for noise realization n and N is the total number of noise realizations. The performance of MR-based PET motion correction for parametric myocardial perfusion PET imaging was evaluated using the ST

results as the gold standard for each ROI. For method M (i.e., GA, NMC, or MC), the bias ($b_{K_1}^M$) was computed using:

$$b_{K_1}^M = \frac{1}{\overline{K_1}^{ST}} \left(\overline{K_1}^M - \overline{K_1}^{ST} \right),$$

where $\overline{K_1}^{ST}$ and $\overline{K_1}^M$ are the mean K_1 values for ST and method M, respectively. The standard deviation reduction of MC relative to GA was computed using:

$$\delta_{K_1}^{MC} = \left| \sigma_{K_1}^{MC} - \sigma_{K_1}^{GA} \right| / \sigma_{K_1}^{GA},$$

where $\sigma_{K_1}^{MC}$ and $\sigma_{K_1}^{GA}$ are the standard deviation of K_1 values for MC and GA, respectively.

Motion estimation based on a human study

In order to demonstrate the feasibility of using MRI to estimate both the cardiac and respiratory motion fields of the heart, a subject was scanned on a Siemens 3-T system using a fast low angle shot (FLASH) MRI sequence with golden-angle based radial sampling of the k -space (denoted hereinafter as Rad-FLASH) [28]. The sequence also acquired a fast slice-projection navigator (NAV) echo every TR to track the diaphragm position. The subject was instructed to breath freely during the scan. The total imaging time was about 5 min. Twenty coronal Rad-FLASH slices were acquired to cover the whole thorax. The acquisition parameters were slice thickness = 8 mm, TE = 1.5 ms, TR = 70 ms, FA = 30°, FOV = 320 × 320 mm², and the total number of radial k -lines acquired per slice = 5120. Moreover, an electrocardiogram (ECG) was used to monitor the cardiac cycle. For the processing of Rad-FLASH data, we first extracted the subject's diaphragm position using the NAV signal. We then assigned a respiratory phase (out of total of five phases) and a cardiac phase (out of total of six phases) to each acquired radial k -line (spoke) based on amplitude bins defined within the moving range of the diaphragm and on the time delay relative to the R-wave from the ECG, respectively. The spokes in all the motion phases were reconstructed simultaneously using kt-FOCUSS [29], which is a compressed sensing technique. This procedure allowed obtaining one MR image volume for each one of the 30 motion phases. Non-rigid registration of the MR volumes was then used to estimate the motion fields between each motion phase and the reference one, which was chosen to be the end-exhalation/end-diastolic phase. For CM, only the motion phases at the end of exhalation were used.

Results

For both CM and CRM, Fig. 3 a shows the same PET slice through the myocardial defect using the data generated from 6 to 10 min after the tracer injection for one noise realization (The ST image was obtained using the noise-free data). The noise levels are high in the GA images because only 10 and 4% of all the detected counts were used in PET reconstruction for CM and CRM, respectively. The NMC images have less noise but are blurred by motion. As compared to the ST image, the blurring effect results in a thicker myocardium wall in the NMC images. CRM causes more motion blurring than CM. The MC images have greatly reduced motion artifact and similar noise level as compared to the NMC images.

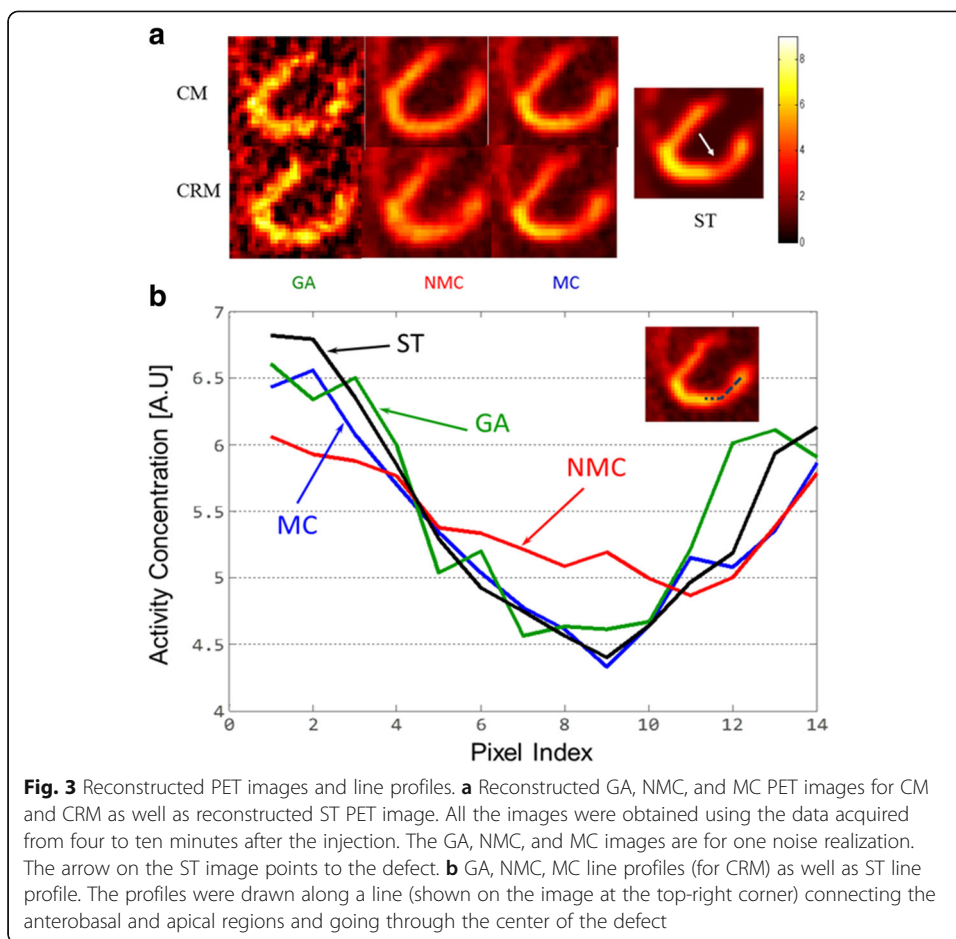
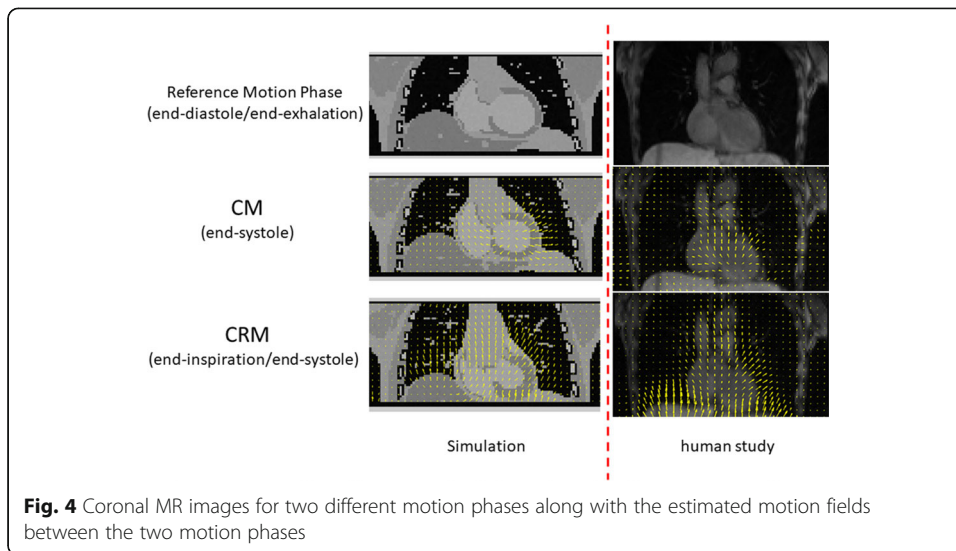


Figure 3b shows the activity concentration profiles along a line connecting anterobasal and apical regions through the center of the defect for CRM. GA and MC have similar profiles to ST except that the GA profile has more fluctuations due to high noise level in the GA image. For NMC, the contrast between the defect and the healthy myocardium is much lower as compared to ST, GA, and MC.

Figure 4 shows the coronal MR images in two different motion phases together with the motion fields estimated between the two motion phases for both CM and CRM. Most motion can be seen in the heart region and entire torso for CM and CRM, respectively. Similar motion fields can be found for both the simulation and the human study.

Figure 5 shows the coronal attenuation map in the reference motion phase (end-diastole/end-exhalation) (Fig. 5a); the attenuation map transformed from the reference phase to the phase of end-inspiration/end-systole using the motion fields measured by MRI (Fig. 5b) and the true attenuation map generated by the XCAT phantom in the phase of end-inspiration/end-systole (Fig. 5c). For the phase of end-inspiration/end-systole, the transformed attenuation map (Fig. 5b), which was obtained using the motion fields measured by MRI, matches well with the true attenuation map (Fig. 5c).

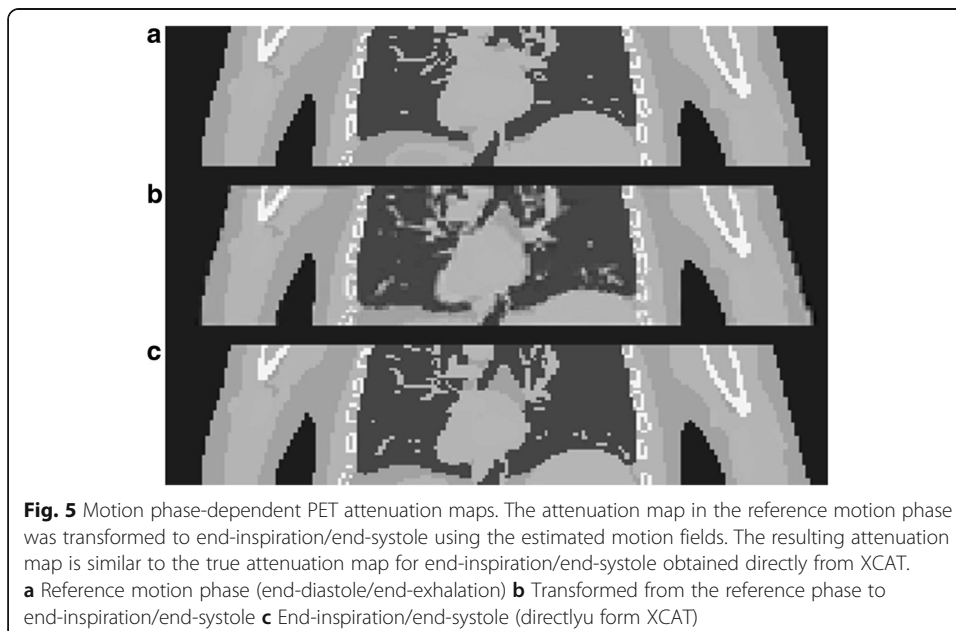
For one of the noise realizations, Fig. 6a shows the same K_1 slice through the myocardial defect for both CM and CRM. Similar to Fig. 3a, the noise level is high for GA. The NMC K_1 maps have less noise but depict high motion blurring. The MC K_1

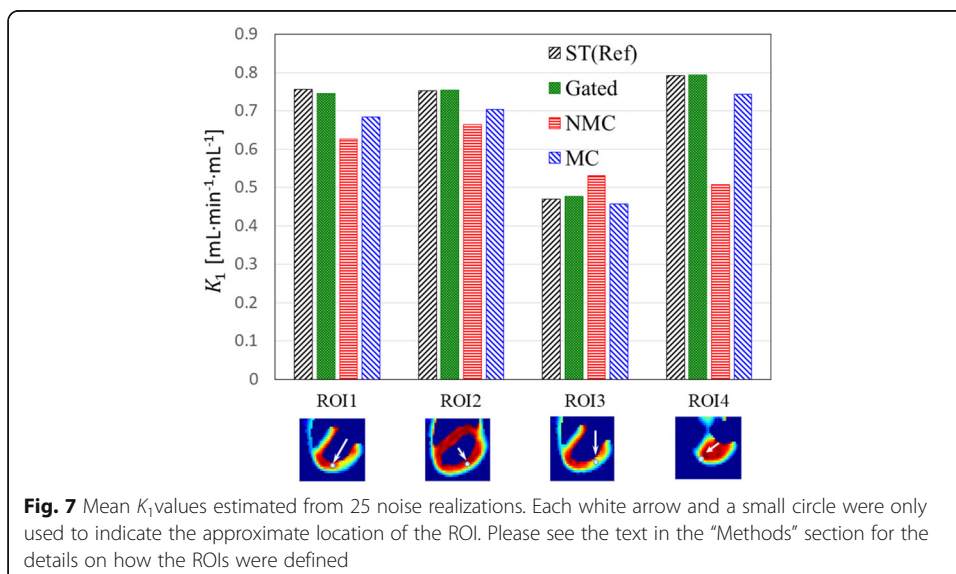
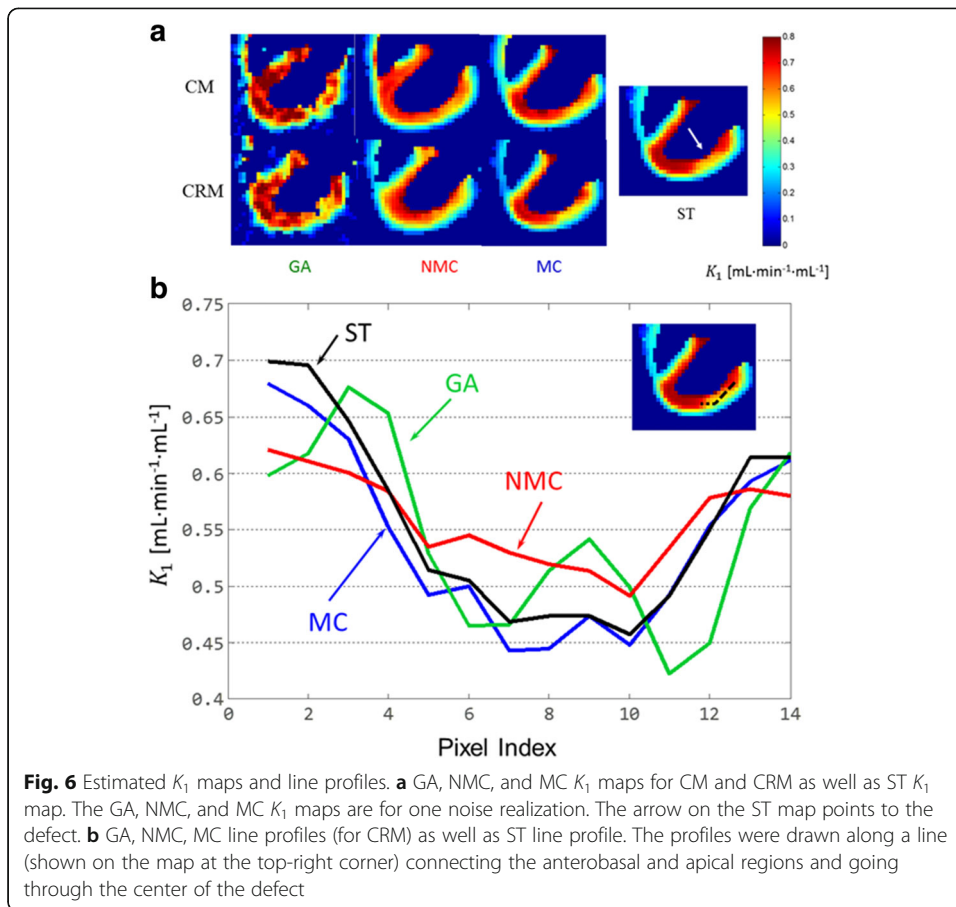


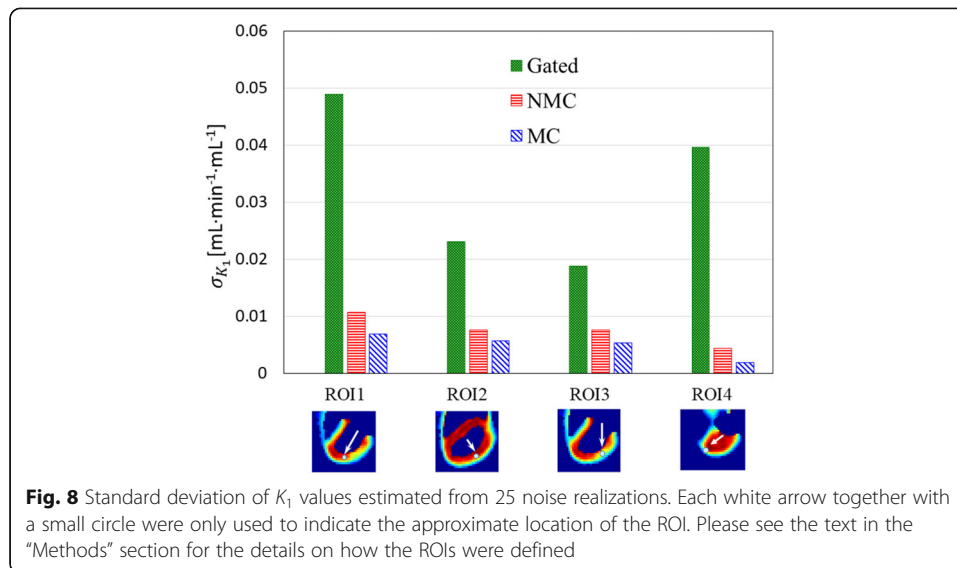
maps have greatly reduced motion artifacts and a noise level similar to that of the NMC maps.

Figure 6b shows the K_1 profiles along a line connecting anterobasal and apical regions through the center of the defect for CRM. The GA and ST profiles match well even though the GA profile has more fluctuation. The MC profile matches well with the ones for ST and GA but with much lower fluctuations. However, the NMC profile substantially deviates from the ST profile.

Finally, Figs. 7 and 8 show the mean and standard deviation of K_1 values for the four selected ROIs computed from the 25 noise realizations for CRM. For all the four ROIs, the MC bias is less than that for NMC using ST as the gold standard. MC yields an absolute reduction of K_1 bias, which was computed as the percentage of average K_1 using ST, by 7.7, 5.1, 15.7, and 29.9% in ROIs 1, 2, 3, and 4, respectively, as compared to







NMC. As compared to the ground truth K_1 values used for simulating the PET dynamic data, ST, GA, NMC, and MC yielded “true bias” (i.e., percentage relative to the ground truth) of -5.4 , -6.9 , -21.6 , and -14.3% , respectively, for ROI1; -5.8 , -5.8 , -16.8 , and -12.0% , respectively, for ROI2; 30.6 , 32.4 , 47.6 , and 27.0% , respectively, for ROI3; and -0.9 , -0.7 , -36.6 , and -7.0% , respectively, for ROI4. The true bias values are particularly high for ROI3, which is the defect region, because of activity spillover due to PET partial volume effect. The greatest improvement in PET quantitation by MC as compared to NMC was seen in ROI4 where the motion was the biggest. As expected, GA yields much higher variance than both NMC and MC because MC uses all the PET counts in the PET reconstruction, while GA uses only a fraction of the PET counts. The K_1 standard deviation reductions by MC relative to GA are 85.9 , 75.3 , 71.8 , and 95.2% in the four ROIs, respectively, for CRM.

Discussion

Comparing NMC to MC, we expect MC to have less bias than NMC. Furthermore, because the number of coincidence events used in NMC and MC was the same, we expect MC and NMC to yield similar variance. These expectations are consistent with the results obtained in this study. For both static and parametric images/profiles as shown in Figs. 3 and 6, respectively, we found that MC has less bias than NMC using ST as the reference while the noise levels for NMC and MC are similar. Similar results were also found in the ROI studies as shown in Figs. 7 and 8.

Comparing GA to MC, we expect MC to have higher bias than GA because MR-based motion correction will not be perfect. Also, we expect NMC to have much lower variance than GA because MC uses all the coincidence events, while GA uses only a fraction of the coincidence events. These expectations are again consistent with our results. As shown in Figs. 3, 6, 7, and 8, MC has much lower noise level than GA. If we use ST as the reference, MC has higher bias than GA.

We have also noticed that due to lower amplitude of the motion, cardiac motion yields less blurring than respiratory motion. However, motion correction for cardiac motion still plays a role. As shown in Figs. 3a and 6a, the myocardium wall becomes noticeably thinner if motion correction is applied.

In this study, the motion fields used for PET motion correction were derived from simulated MR data. However, it is always questionable whether accurate motion fields can be estimated using real data. In Fig. 4, we show in a human MR study that a 5-min golden-angle radial MR acquisition used along with compressed sensing image reconstruction (kt-FOCUSS [29]) can generate 4D MR images with good quality enabling estimation of both cardiac and respiratory motion fields. We found both the simulation and the human study produced similar motion fields. Of course, it is highly desirable to keep the MR acquisition for motion measurement as short as possible so that more imaging time can be dedicated to clinical MR sequences. This can be achieved using low-rank reconstruction technique [30], which takes advantage of the spatiotemporal correlation among the motion phases using compressed sensing [29, 31]. The imaging time can be further reduced using parallel imaging techniques [28, 32].

This study is mainly dedicated to the evaluation of MR-based motion correction on parametric PET imaging. Accurate estimation of kinetic parameters, such as MBE, is challenging because of the high noise levels present in short dynamic frames. This problem becomes more severe if cardiac or dual cardiac/respiratory gating is used because a large portion of data is discarded during reconstruction. This study shows that we are capable of making high quality parametric PET images using MR-based motion correction.

In this study, we used FBP along with post-reconstruction motion correction rather than iterative reconstruction algorithms to obtain dynamic images because it is well known that iterative reconstruction algorithms, such as OSEM, lead to spatially variant spatial resolution and noise characteristics. For dynamic PET, spatially variant spatial resolution across different time frames can lead to errors on the estimated kinetic parameters.

In this study, the input function was assumed to be obtained by an arterial blood sampling, which is challenging in practice. Image-derived input function is an elegant and attractive noninvasive alternative to blood sampling [33, 34]. For cardiac perfusion PET, the image-derived input function can be obtained by computing activity concentration within an ROI within the blood pool of the left ventricle. Such method is practical for cardiac PET because the heart is within the FOV. However, if NMC PET images are used for such purpose, errors may be introduced into the input function due to motion. We defined an ROI of ~ 4 pixels in the blood pool (the ROI was kept away from the myocardium to avoid the spillover effect) and obtained image-derived input functions using GA, NMC, and MC methods. Figure 2 shows that the image-derived input functions using GA and MC agree well with the true input function, while NMC yields large errors. Therefore, image-derived input functions should be obtained using GA or MC methods.

In this study, an assumption that each PET event can be correctly assigned to a motion phase was made. In a real PET-MR scan, motion phase must be tracked whenever PET data are acquired in order to perform MR-based PET motion correction. Cardiac motion phases can be tracked by the relative delay to R wave using ECG [35] or PET

list-mode data. Respiratory motion phases can be tracked by either bellows, a pencil-beam MR navigator through diaphragm [35], or PET list-mode data. [36] Although simultaneous PET-MR is ideal for MR-based PET motion correction, it is still feasible to use sequential PET-MR for the purpose if no body motion occurs between the PET and MRI scans. However, for sequential PET-MR, external motion-phase-tracking devices, such as ECG and bellows rather than MR-based motion-phase-tracking methods must be used. Even for simultaneous PET-MR, if body motion occurs during the scan, motion fields must be either re-measured or corrected.

In this study, cardiac and respiratory cycles were binned into multiple motion phases. In a real human scan, MR k -space data used for motion estimation for a given motion phase are acquired only when the motion phase is reached. Many cardiac and/or respiratory cycles are needed to collect enough k -space data so that MR images with good image quality can be reconstructed. This implies that long MR imaging time is required for the motion measurement. Moreover, the internal motion of the myocardium may not be measured correctly if its MR signals appear uniform using a standard GRE sequence. Applying tagging in three different directions is a solution to such problem but requires much more imaging time [37, 38].

The XCAT phantom can be used to generate a true attenuation map for each motion phase. However, in order to mimic a real PET-MR scan, the attenuation map used in the PET reconstruction in a given motion phase other than the reference phase was not generated by the XCAT phantom for the MC study. Instead, the reference attenuation map was transformed using the motion fields measured by MRI to obtain the motion phase-dependent attenuation maps. Because the purpose of this study is to assess the performance of MR-based motion correction on PET parametric imaging, the attenuation map in the reference motion phase was directly derived from the XCAT phantom. In a real PET-MR study, however, the currently implemented method for PET attenuation correction is to segment tissues into a few different types based on MR images using Dixon sequence and then assign a single attenuation coefficient to each tissue type [39].

In the future, in vivo animal and human PET-MR studies will be performed to further assess the performance of MR-based motion correction for PET parametric imaging. Because the true kinetic parameters are unknown for in vivo studies, gated results with high statistics can be used as the silver standard for the assessment.

Conclusions

In this paper, a simulation study was performed to evaluate the performance of MR-based motion correction on parametric myocardial perfusion PET imaging using PET-MR. The heart motion on PET images was corrected using motion fields extracted from MRI images. Such correction was then evaluated on the estimation of K_1 values. Our results show that the MR-based motion correction method removes motion blurring and results in less bias on estimated K_1 values than the non-motion correction method. As compared to the conventional gating method, the MR-based motion correction method results in slightly higher or similar bias but much lower variance on the estimated K_1 values. We have also demonstrated from a human MR study that both cardiac and respiratory motion fields can be estimated using a single MR sequence that incorporates both cardiac and respiratory motion tracking.

Abbreviations

3 T: 3 tesla; CM: Cardiac motion only; CRM: Both cardiac and respiratory motions; CT: Computed tomography; ECG: Electrocardiogram; FA: Flip angle; FBP: Filtered back-projection; FLASH: Fast low angle shot; FOCUSS: Focal underdetermined system solver; FOV: Field of view; FWHM: Full width at half maximum; GA: Gated; GRE: Gradient echo; LV: Left ventricle; MATLAB: Matrix laboratory; MBF: Myocardial blood flow; MC: Motion-corrected; MR: Magnetic resonance; MRI: Magnetic resonance imaging; NAV: Navigator; NMC: Non-motion-corrected; PD: Proton density; PET: Positron emission tomography; PSF: Point spread function; Rad-FLASH: Radial FLASH; ROI: Region of interest; RV: Right ventricle; ST: Static; TAC: Time-activity curve; TE: Echo time; TR: Time of repetition; XCAT: Extended cardiac-torso

Acknowledgements

The authors would like to thank the Undergraduate Overseas Research Training Supporting Program of Tsinghua University.

Funding

This work was supported in part by NIH R01-HL118261 and NIH P41-EB022544.

Availability of data and materials

Please contact the corresponding author, Jinsong Ouyang (ouyang.jinsong@mgh.harvard.edu), for the data used in this manuscript.

Authors' contributions

RG performed the simulation, estimated the motion fields, performed PET reconstruction and MR-based PET motion correction, estimated the kinetic parameters, assessed the bias and standard deviation of K_1 values, and contributed to manuscript writing and editing. YP provided assistance to the simulation, motion estimation, PET reconstruction, motion correction; collected the patient data; estimated the motion fields for the human study; and contributed to the manuscript editing. YM provided assistance in the data analysis. GEF contributed to the coordination of the human study and obtained ethics approval. KY contributed to the coordination of the data analysis and supervised the project. JO designed the study, supervised the project, and drafted and edited the manuscript. All authors read and approved the final manuscript.

Ethics approval and consent to participate

The human study was approved by the Institutional Review Board at the Massachusetts General Hospital. The subject was given a written informed consent prior to the study.

Consent for publication

All authors read the manuscript and consented for its publication.

Competing interests

The authors declare that they have no competing interests.

Publisher's Note

Springer Nature remains neutral with regard to jurisdictional claims in published maps and institutional affiliations.

Author details

¹Department of Engineering Physics, Tsinghua University, Beijing 10084, China. ²Key Laboratory of Particle and Radiation Imaging, Ministry of Education, Beijing 10084, China. ³Gordon Center for Medical Imaging, Department of Radiology, Massachusetts General Hospital, Boston, MA 02114, USA. ⁴Department of Radiology, Harvard Medical School, Boston, MA 02115, USA. ⁵Present Address: Department of Electrical and Computer Engineering, University of Illinois at Urbana-Champaign, Urbana, IL 61801, USA. ⁶Present Address: Medical Physics Graduate Program, Duke University, Durham, NC 27705, USA.

Received: 20 July 2017 Accepted: 4 December 2017

Published online: 01 February 2018

References

1. Choi Y, Huang SC, Hawkins RA, Kim JY, Kim CK, Hoh CK, Chen K, Phelps ME, Schellbert HR. Quantification of myocardial blood flow using ¹³N-ammonia and PET: comparison of tracer models. *J Nucl Med*. 1999;40:1045–55.
2. Araujoji LI, Lammertsma AA, Rhodes CG, McFalls EO, Lida H, Rechavia E, Galassi A, DeSilva R, Jones T, Maseri A. Noninvasive quantification of regional myocardial blood flow in coronary artery disease with oxygen-15-labeled carbon dioxide inhalation and positron emission tomography. *Circulation*. 1991;83:875–85.
3. Yoshinaga K, Katoh C, Noriyasu K, Iwado Y, Furuyama H, Ito Y, Kuge Y, Kohya T, Kitabatake A, Tamaki N. Reduction of coronary flow reserve in areas with and without ischemia on stress perfusion imaging in patients with coronary artery disease: a study using oxygen 15-labeled water PET. *J Nucl Cardiol*. 2003;10:275–83.
4. Prior JO, Allenbach G, Valenta I, Kosinski M, Burger C, Verdun FR, Bishof Delalye A, Kaufmann PA. Quantification of myocardial blood flow with ⁸²Rb positron emission tomography: clinical validation with ¹⁵O-water. *J Nucl Med*. 2012;39:1037–47.
5. Castellani M, Colombo A, Giordano R, Pusineri E, Canzi C, Longari V, Piccaluga E, Palatresi S, Dellavedova L, Soligo D, Rebulli P, Gerundini P. The role of PET with ¹³N-ammonia and ¹⁸F-FDG in the assessment of myocardial perfusion and metabolism in patients with recent AMI and intracoronary stem cell injection. *J Nucl Med*. 2010;51:1908–16.

6. Yalamanchili P, Wexler E, Hayes M, Yu M, Bozek J, Kagan M, Radeke HS, Azure M, Purohit A, Casebier DS, Robinson SP. Mechanism of uptake and retention of F-18 BMS-747158-02 in cardiomyocytes: a novel PET myocardial imaging agent. *J Nucl Cardiol*. 2007;14:782–8.
7. Klein GJ, Reutter RW, Huesman RH. Four dimensional affine registration models for respiratory-gated PET. *IEEE Trans Nuc Sci*. 2001;48:756–60.
8. Nehmeh SA, Erdi Y, Ling CC, Rosenzweig KE, Schoder H, Larson SM, Macapinlac HA, Squire OD, Humm JL. Effect of respiratory gating on quantifying PET images of lung cancer. *J Nucl Med*. 2002;43:876–81.
9. Boucher L, Rodrigue S, Lecomte R, Benard F. Respiratory gating for 3-dimensional PET of the thorax: feasibility and initial results. *J Nucl Med*. 2004;45:214–9.
10. Martinez-Moller A, Zikic D, Botnar RM, Bundschuh RA, Howe W, Ziegler SI, Navab N, Schwaiger M, Nekolla SG. Dual cardiac-respiratory gated PET: implementation and results from a feasibility study. *Eur J Nucl Med Mol Imaging*. 2007;34:1447–54.
11. Buther F, Dawood M, Stegger L, Wubbeling F, Schafers M, Schober O, Schafers K. List mode-driven cardiac and respiratory gating in PET. *J Nucl Med*. 2009;50:674–81.
12. Qiao F, Pan T, Clark JJ, et al. A motion-incorporated reconstruction method for gated PET. *Phys Med Biol*. 2006;51:3769–83.
13. Gigengack F, Ruthotto L, Burger M, Wolters C, Jiang X, Schafers KP. Motion correction in dual gated cardiac PET using mass-preserving image registration. *IEEE Trans Med Imag*. 2012;31:698–712.
14. Lamare F, Le Maitre A, Dawood M, Schafers K, Fernandez P, Rimoldi O, Visvikis D. Evaluation of respiratory and cardiac motion correction schemes in dual gated PET/CT cardiac imaging. *Med Phys*. 2014;41:072504-072501-072513.
15. Feng T, Wang J, Fung G, Tsui B. Non-rigid dual respiratory and cardiac motion correction methods after, during, and before image reconstruction for 4D cardiac PET. *Phys Med Biol*. 2016;61:151–68.
16. Wang X, Rahmim A, Tang J. MRI-assisted dual motion correction for myocardial perfusion defect detection in PET imaging. *Med Phys*. 2017;44:4536–47.
17. Küstner T, Schwartz M, Martirosian P, Gatidis S, Seith F, Gilliam C, Blu T, Fayad H, Visvikis D, Schick F, Yang B, Schmidt H, Schweser NF. MR-based respiratory and cardiac motion correction for PET imaging. *Med Image Anal*. 2017;42:129–44. <https://doi.org/10.1016/j.media.2017.08.002>.
18. Kolbitsch C, Ahlman M, Davies-Venn C, Evers R, Hansen M, Peressutti D, Marsden P, Kellman P, Bluemke D, Schaeffter T. Cardiac and respiratory motion correction for simultaneous cardiac PET/MR. *J Nucl Med*. 2017;58:846–52.
19. Segars W, Sturgeon G, Mendonca S, Grimes J, Tsui B. 4D XCAT phantom for multimodality imaging research. *Med Phys*. 2010;37:4902–15.
20. Beanlands RSd, Scheffel RA, Nahmias C, Garnett ES, Coates G, Johansen HL, Fallen E. Can nitrogen-13 ammonia kinetic modeling define myocardial viability independent of fluorine-18 fluorodeoxyglucose? *JACC*. 1997;29:537–43.
21. Bol A, Melin J, Vanoverschelde J, Baudhum T, Vogelaers D, De Prauw M, Michel C, Luxen A, Labar D, Cogneau M. Direct comparison of [13N]ammonia and [15O]water estimates of perfusion with quantification of regional myocardial blood flow by microspheres. *Circulation*. 1993;87:512–25.
22. Siddon RL. Fast calculation of the exact radiological path for a three-dimensional CT array. *Med Phys*. 1985;12:252–5.
23. Zech W, Schwendener N, Persson A, Warntjes MJ, Jackowski C. Postmortem MR quantification of the heart for characterization and differentiation of ischaemic myocardial lesions. *Eur Radiol*. 2015;25:2067–73.
24. Liu F, Velikina JV, Block WF, Kijowski R, Samsonov AA. Fast realistic MRI simulations based on generalized multi-pool exchange tissue model. *IEEE Trans Med Imaging*. 2017;36(2):527–37.
25. Thirion JP. Non-rigid matching using demons, *IEEE computer vision and pattern recognition*; 1996. p. 245–51.
26. Thirion JP. Image matching as a diffusion process: analogy with Maxwell's demons. *Med Image Anal*. 1998;2:243–60.
27. Kroon D, Slump C. MRI modality transformation in demon registration. In: *IEEE International Symposium on Biomedical Imaging*. Boston: IEEE; 2009. p. 963–6.
28. Huang C, Petibon Y, Ouyang J, Reese TG, Ahlman MA, Bluemke DA, El Fakhir G. Accelerated acquisition of tagged MRI for cardiac motion correction in simultaneous PET-MR: phantom and patient studies. *Med Phys*. 2015;42:1087–96.
29. Jung H, Sung K, Nayak K, Kim E, Ye J. k-t FOCUSS: a general compressed sensing framework for high resolution dynamic MRI. *Mag Res Med*. 2009;61:103–16.
30. Christodoulou A, Zhang H, Zhao B, Hitchens T, Ho C, Liang Z. High-resolution cardiovascular MRI by integrating parallel imaging with low-rank and sparse modeling. *IEEE Trans Biol Med Eng*. 2013;60:3083–92.
31. Lustig M, Donoho D, Pauly J. Sparse MRI: the application of compressed sensing for rapid MR imaging. *Magn Reson Med*. 2007;58:1182–95.
32. Sodickson D, Hardy C, Zhu Y, Giaquinto R, Gross P, Kenwood G, Niendorf T, Lejay H, McKenzie C, Ohliger M, Grant A, Rofsky N. Rapid volumetric MRI using parallel imaging with order-of-magnitude accelerations and a 32-element RF coil array: feasibility and implications. *Acad Radiol*. 2005;12:626–35.
33. Zanotti-Fregonara P, Checn K, Liow J, Fujita M, Innis R. Image-derived input function for brain PET studies: many challenges and few opportunities. *J Cereb Blood Flow Metab*. 2011;31:1986–98.
34. Mourik J, Lubberink M, Lammertsma A, Boellaard R. Image derived input functions: effects of motion on tracer kinetic analyses. *Mol Imaging Biol*. 2011;13:25–31.
35. Scott A, Keegan J, Firmin D. Motion in cardiovascular MR imaging. *Radiology*. 2009;250:331–51.
36. Buther F, Dawood M, Stegger L, Wubbeling F, Schafers M, Schober O, Schafers K. List mode-driven cardiac and respiratory gating in PET. *J Nucl Med*. 2009;50:647–81.
37. Petibon Y, Ouyang J, Zhu X, Huang C, Reese T, Chun S, Li Q, El Fakhir G. Cardiac motion compensation and resolution modeling in simultaneous PET-MR: a cardiac lesion detection study. *Phys Med Biol*. 2013;58:2085–102.
38. Ouyang J, Li Q, El Fakhir G. Magnetic resonance-based motion correction for positron emission tomography imaging seminars in nuclear medicine. *Semin Nucl Med*. 2013;43:60–7.
39. Eiber M, Martinez-Moller A, Souvatzoglou M, Holzapfel K, Pickhard A, Loffelbein D, Santi I, Rummeny EJ, Ziegler S, Schwaiger M, Nekolla S, Beer AJ. Value of a Dixon-based MR/PET attenuation correction sequence for the localization and evaluation of PET-positive lesions. *Eur J Nucl Mol Imaging*. 2011;38:1691–701.