

RESEARCH ARTICLE

Development of a novel *S. Typhi* and *Paratyphi A* outer membrane vesicles based bivalent vaccine against enteric fever

Debaki R. Howlader, Hemanta Koley*, Ritam Sinha, Suhrid Maiti, Ushasi Bhaumik, Priyadarshini Mukherjee, Shanta Dutta

Division of Bacteriology, National Institute of Cholera and Enteric Diseases, Beliaghata, Kolkata, India

* hemantakoley@hotmail.com



Abstract

Salmonella Typhi and *Salmonella Paratyphi A* are the leading causative agents of enteric fever which cause morbidity and mortality worldwide. Currently, there is no combination vaccine which could protect infection from both the strains. In this paper, we are focusing on the development of a novel bivalent typhoidal Outer Membrane Vesicles (OMVs) based immunogen against enteric fever. We have isolated *Salmonella Typhi* and *Paratyphi A* OMVs and also characterized OMVs associated antigens. Then we immunized adult mice with three doses of our newly formulated bivalent immunogen orally (25 µg/200 µl). After three doses of oral immunization, we found our immunogen could significantly induce humoral response. We have also found serum IgG against LPS, Vi-polysaccharide etc. OMV immunization induces CD4, CD8 and CD19 population in immunized mice spleen. It also induces Th1 and Th17-cell mediated immunity. We also found bivalent OMVs immunization can prevent more than lethal dose of heterologous *Salmonella* strains mediated systemic infection in adult mice model. We determined that, the protective immune responses depend on the humoral and cell-mediated immune response. Furthermore, we have evaluated the mode of protective immune response carried out by anti-OMVs antibody by significantly inhibiting bacterial motility and mucin penetration ability. Taken together, these findings suggest that our bivalent immunogen could be used as a novel candidate vaccine against enteric fever.

OPEN ACCESS

Citation: Howlader DR, Koley H, Sinha R, Maiti S, Bhaumik U, Mukherjee P, et al. (2018) Development of a novel *S. Typhi* and *Paratyphi A* outer membrane vesicles based bivalent vaccine against enteric fever. PLoS ONE 13(9): e0203631. <https://doi.org/10.1371/journal.pone.0203631>

Editor: Daniela Flavia Hozbor, Universidad Nacional de la Plata, ARGENTINA

Received: May 9, 2018

Accepted: August 23, 2018

Published: September 14, 2018

Copyright: © 2018 Howlader et al. This is an open access article distributed under the terms of the [Creative Commons Attribution License](https://creativecommons.org/licenses/by/4.0/), which permits unrestricted use, distribution, and reproduction in any medium, provided the original author and source are credited.

Data Availability Statement: All relevant data are within the paper and its Supporting Information files.

Funding: This work was done with very limited funding from Indian Council of Medical Research (ICMR), India and the first author only receives his fellowship from Council of Scientific and Industrial Research (CSIR), India and a marginal 20,000 INR as a contingency grant per year. The funders had no role in study design, data collection and

Introduction

Enteric fever, a serious invasive febrile illness of the human, caused by *Salmonella enterica* serovars *Typhi* and *Paratyphi A* (*S. Typhi* and *S. Paratyphi A*, respectively) is considered to be a major global burden in developed and developing countries [1]. Globally *S. Typhi* affects 21.7 million people and 200,000 deaths per year. Although *S. Typhi* is more prevalent until recently; *S. Paratyphi A*, *B* and *C* too can cause significant morbidity and mortality especially in Asia and in travelers returning from these endemic areas. Recent trends of enteric fever suggest a change in disease pattern, typically a rise of paratyphoid fever in the Asian and other developing countries [2, 3].

analysis, decision to publish, or preparation of the manuscript.

Competing interests: We have applied for a Patent in the Indian Patent Office. We have received a PCT number which is following: PCT/IN2018/050158. Name of the patent: A Bivalent outer Membrane Vesicles (BOMVs) based vaccine against typhoidal salmonellae. Number: PCT/IN2018/050158. Inventors: Hemanta Koley, Debaki Ranjan Howlader, Shanta Dutta. This does not alter our adherence to PLOS ONE policies on sharing data and materials.

In this changing disease pattern, it has been hypothesized that, soon *S. Paratyphi A* infection would become the prime strain with significant human morbidity and mortality [2, 3]. *S. Typhi* and *Paratyphi A* are transmitted by ingestion of contaminated food and water. After ingestion, salmonellae adhere to the mucosa and invade intestinal epithelial cells especially through Microfold (M) cells. After invasion, organisms translocate into intestinal lymphoid organs and some passes on to the liver and spleen [4]. During this stage of infection *Salmonella* activates different mucosal and systemic immune response which is very crucial for strategic suitable vaccine development.

Currently, there are three globally licensed vaccines available against *S. Typhi*, a live-attenuated oral vaccine Ty21a (*galE* mutant of the wild type Ty2 strain) and parenteral polysaccharide Vi-vaccine (Vi-vaccine) [5]. The third one is a recent tetanus toxoid-conjugated vaccine which is also against *S. Typhi*. Although the oral vaccine somewhat cross-protect paratyphoid infection, but because Vi polysaccharide is generally absent in *Paratyphi*, the Vi vaccine is ineffective against *Paratyphi* infection. Therefore, a better understanding of the immunology towards protection is required to allow more rational approach to vaccine development. In this situation, need for a new vaccine seems obvious which will protect against both *S. Typhi* and *S. Paratyphi A* infection.

Outer Membrane Vesicles (OMVs) are secreted naturally from several Gram-negative bacteria including typhoidal salmonellae. These native OMVs are being used as a next generation acellular vaccine, which induces long-term protective immune response without any additionally added adjuvant. OMVs have LPS and membrane proteins as a natural adjuvant [6, 7, 8, 9, 10, 11]. Biochemical and proteomics studies have revealed that OMVs consists of different Pathogen-Associated Molecular Patterns (PAMPs) such as LPSs, outer membrane proteins, outer membrane lipids, periplasmic proteins, DNA, RNA etc. which can activate innate as well as adaptive immune response, which is a crucial characteristic for an ideal vaccine.

The only licensed OMV-vaccine is of *Neisseria meningitidis* serogroup-B vaccine, MeNZB, which is safe, immunogenic and protective in nature [12, 13]. It has showed nearly 80% protective efficacies during an epidemic meningococcal serotype B outbreak in Norway and New Zealand in both adults and children. In the past, in our laboratory, we have developed different multivalent OMV based vaccine against different enteric organisms like *V. cholerae*, *Shigella sp.* etc. [14, 15, 16, 17].

In this study, we are focusing onto the development of an oral bivalent OMV based typhoidal vaccine which can induce long-term broad spectrum protective efficacy against both *S. Typhi* and *Paratyphi A*. Another aim of our study was to prevent the entry of *Salmonella* through intestine as well as reduction in the bacterial load after systemic infection by activating mucosal as well as systemic immune response.

Methods

Bacterial strains and culture conditions

OMV antigens were prepared from *S. Typhi* C-6953 and *S. Paratyphi A* C-6915, and for challenge study, *S. Typhi* C-6.946 and *S. Paratyphi A* BCR 148 were collected from National Institute of Cholera and Enteric Diseases (NICED) culture bank. All strains were kept in 20% glycerol in brain heart infusion broth (Difco, USA) at -80° C. Prior to experimentation, each strain was grown in Tryptic Soy Broth (TSB; Difco, USA) at 37° C under shaking conditions (100 rpm) or on plates in Tryptic Soy Agar (TSA; Difco, NJ, USA).

Characterization of the strains used

Strains were characterized by both PCR-based method and serotyping. For PCR, the following genes were selected and their respective primer sequences [18] have been shown in bracket: *prtA-parat-s* (5' -CTT GCT ATG GAA GAC ATA ACG AAC C-3'); *parat-as* (5' -CGT CTC CAT CAA AAG CTC CAT AGA-3'); *fliCd-as* (5' -GCA TAG CCA CCA TCA ATA ACC-3'); *fliCa-as* (5' -TAG TGC TTA ATG TAG CCG AAG G-3'); *fliCcom-s* (5' -AAT CAA CAACAA CCT GCA GCG-3'). Afterwards, anti O- and H-antibodies were used for serotypic characterization of the strains used in the study. White-Kauffmann-Le Minor scheme for Antigenic Formulae was followed during the experiment [19, 20] (S1 File).

Antibiotic-resistance pattern of the strains was also checked by Bauer method [21]. Selection of antibiotics was dependent on both WHO, CLSI guidelines [22, 23] and the availability of antibiotics in our facility. Antibiotic disks (AMP 10 µg, CTX 30µg, CFZ 30 µg, CFX 5µg, CRO 30 µg, CHL 30 µg, I 10 µg, NAL 30 µg, CO 25 µg, TET 30 µg, TMP 30 µg, SXT 23.75 µg, LO 30 µg, AZ 15 µg, CIP 5 µg, STR 10 µg, KAN 30 µg) were purchased from BD Bioscience, USA (S2 File).

Preparation of OMVs

OMVs were prepared from two *Salmonella enterica* strains as shown in Table 1 following the method adapted by Sinha et al. with slight modifications [15]. Briefly, cells were grown till exponential phase at 37°C under shaking condition followed by centrifugation at 8000 rpm for a total of 40 minutes at 4°C. Following filtration by 0.22 µm bacterial filters (Millipore, USA), OMVs were subsequently purified by ultra-centrifugation (4 h, 140,000 x g, 4°C) using a Sorvall T-865 rotor, and re-suspended in Phosphate-Buffered Saline (PBS, pH 7.4). Protein concentration was determined by the modified Lowry protein assay kit (Pierce, USA). Reducing sugar in LPS O-Ag was determined by a method used by Dubois et al [24].

The amount of protein and O-antigen of LPS associated with isolated OMVs were measured by Lowry and Dubois methods, respectively. The amount of protein varied between 400–440 µg/ml in every batch. The exact amount was calculated every time before the introduction of the immunogen in animals or in *in vitro* study.

Negative staining of OMVs and OMV-secreting bacteria

A 5 µl aliquot of secreted OMVs were placed on a carbon coated grid and left for 1 minute for proper absorption. The grid was then washed with two drops of Tris-HCl buffer. After blotting excess fluid, the sample was stained with 2% aqueous solution of uranyl acetate. In case of negative staining of bacteria, the same procedure was followed with log-phase live bacterial cells. Both the negatively stained OMVs and bacteria-secreting OMVs were observed under Tecnai 12 (Bio Twin Transmission Electron Microscope, FEI, the Netherlands) operating at 80 kV (Hayat & Miller, 1990).

MALDI-TOF/TOF

Standard procedure was followed for the preparation of samples for MALDI-TOF/TOF [25]. Coomassie stained SDS-PAGE gel pieces were excised. Gel pieces were processed using in-gel

Table 1. Concentration of protein and O-antigen in OMV samples.

Name of OMVs	Mean concentration of protein (µg/ml)	Mean concentration of O-antigen (µg/ml)	Source or reference
S. Typhi C-6953	414	250	This study
S.Paratyphi A C-6915	430	235	This study

<https://doi.org/10.1371/journal.pone.0203631.t001>

tryptic digestion kit (Pierce, Thermo scientific). In brief, they were reduced with Tris (2-carboxyethyl) phosphine in ammonium bicarbonate buffer (25 mM), incubated with iodo-acetamide in dark for 1 h and subsequently digested overnight with trypsin (100 ng/ sample) in ammonium bicarbonate buffer.

Gel pieces were washed with acetonitrile, dried and further rehydrated with trypsin containing digestion buffer. Peptides were extracted from gel, dried, and dissolved in acetonitrile (50%) in trifluoroacetic acid (0.1%). Subsequently, they were spotted on a target MALDI plate using Cyano Hydroxy Cinnamic Acid (CHCA) as a matrix and analyzed using MALDI-TOF mass-spectrometer (Applied Biosystem, Foster City, CA). Spectra were calibrated using the matrix and tryptic auto-digestion ion peaks of Calmix, a standard mixture of six peptides.

Spectral data were analyzed from PMF in combination with MS/MS spectra by searching against the database using the MASCOT (Matrix Science Ltd., London, UK) version 2.2 and basic local alignment search tool (BLAST) of ABI GPS Explorer software, version 3.6 (Applied Biosystems). For database searching the following parameters were used. Peak list-generating software: 4000 series explorer software version 3.5; taxonomy: all entries; database: MSDB version 2.1.0 dated 27.02.2005; No of entries: Database-MSDB20050227 (1942918 sequences; 629040812 residues); cleavage enzyme: trypsin; variable modifications: oxidation on methionine; fixed modification: carbamidomethylation; missed cleavages permitted: one missed cleavages; minimum signal to noise ratio (S/N): 10; peptide charge: +1; precursor mass tolerance: +/- 100 ppm; mass tolerance for the MS/MS search: +/- 0.2 Da. Significance of data was selected according to their p value ($p < 0.05$) where p is the probability that the observed match in a random event. Therefore, Mascot search engine is setting the threshold ions score [$-10 * \text{Log}(p)$] on its own based on the type of analysis, number of spectra to be analyzed etc.

Animals

Seven weeks old female BALB/c mice of either sex were taken from the animal resource division of NICED, Kolkata. Female mice were caged separately as groups of 10 and maintained at a temperature of 25°C with humidity at 75%. Mice were fed sterile food and water. All the animal experiments were conducted following the standard operating procedure as outlined by Committee for the Purpose of Control and Supervision of Experiments on Animal (CPCSEA), Ministry of environment and forest, Government of India. The animal experimental protocol was approved by the Institutional Animal Ethical Committee of NICED with the project approval no. PRO/117/June, 2015–June, 2018.

Oral immunization

Seven weeks old female BALB/c mice were kept empty stomach for (3–4 h) hours before the immunization date, water *ad libitum*. Mice were immunized orally on day 0th, 14th and 28th with 25 µg of purified *S. Typhi*, or *S. Paratyphi A* OMV and a combination of both the OMVs in a 1:1 formulation in 200 µL of PBS following the protocol as explained previously as shown (S3 File).

Collection of serum and stool

Blood was collected from the lateral tail vein at different time intervals on the 0th, 14th, 21st, 28th, 35th, 78th and 90th day of first oral immunization as shown in S3 File. The collected blood was taken in BD Microtainer (BD, NJ, USA) followed by centrifugation (1000 rpm, 10 min and 4°C).

Stools were collected aseptically from immunized and non-immunized mice at the same time intervals as blood. Stools were then homogenized in protease inhibitor (MP Biomedicals,

USA)-containing PBS and centrifuged at 10000 x g for 10 min to remove the debris. The supernatant was collected and stored at -20°C for further use.

Isolation of outer membrane proteins (OMPs) of *S. Typhi* and *Paratyphi A*

Isolation of OMP was carried out as stated elsewhere with modifications [26]. For isolation of outer membrane proteins of two *Salmonella* strains, 50 ml of the respective strains were grown till late exponential phase. Cells were harvested (4,500 x g, 15 min, 4°C), washed once and then re-suspended in 10 mM HEPES, pH 7.5, with protease inhibitor (MP Biomedicals) and then sonicated in a Hielscher (UP100H) ultrasonic processor. Unbroken cells were removed by centrifugation (13,000 x g, 1 min). The supernatant containing the OM proteins was transferred into a new tube and centrifuged again (13,000 x g, 30 min, 4°C). The pellet was re-suspended in 0.8 ml of 10 mM HEPES, pH 7.5, plus 1% sarcosyl (Sigma) and incubated for 30 min. After centrifugation (13,000 x g, 30 min, 4°C), the pellet was washed once with 1 ml of 10 mM HEPES, pH 7.5, and re-suspended in 50 µl of 10 mM HEPES, pH 7.5. The protein concentration was determined as described above and adjusted to 2.5 µg/µl by using 10 mM HEPES, pH 7.5. Purified OM proteins were stored at -80°C for further use.

Isolation of LPS

LPS was isolated by the protocol followed previously [27]. Briefly, overnight cultures of two strains were centrifuged followed by washing with PBS. Phenol-saturated 3-[N-morpholino]propanoic sulfonic acid (MOPS) was added and centrifuged at 15000 x g for 20 minutes. Four volumes of chilled ethanol was then added and kept at -20°C overnight. Next day, the LPS was isolated and dissolved in autoclaved, distilled water and kept at -20°C for further use.

TCA precipitation

Culture supernatant was taken out and TCA was used to precipitate the proteins dissolved in it as described elsewhere [28].

Isolation of whole cell lysate (WCL)

Bacteria were grown overnight and centrifuged at 8000 rpm for 10 minutes, washed with PBS (Sigma, USA, pH 7.4) and sonicated in a Heilcher UP100H sonicator at 100% amplitude/cycle for at least 12 cycles of 30 seconds each. Cells were then checked for membrane lysis and centrifuged at 10,000 rpm for 10 minutes. The supernatant was collected and stored at -80°C for future use.

SDS-PAGE and immunoblot

Total protein content of the OMVs along with OMV-associated LPS profile in the isolated OMVs, mature LPS and OMPs from *Salmonella* strains were determined by SDS-PAGE. OMVs were incubated with Proteinase-K and SDS at 60°C for 2 hours to isolate the OMV-associated LPS. 80 µg of OMVs, OMPs, were boiled in SDS-PAGE buffer and all four LPS samples were boiled in LPS sample buffer. The samples were then loaded onto a 12% SDS-PAGE gel separately depending on their staining reagent. 100 V was then applied for running the gel in an AE-6530 SDS-PAGE apparatus from ATTO Corporation (Japan). The gel was then stained by either coomassie or silver stain.

Afterwards, we did immunoblot assay to determine immunogenic components present in the same samples along with WCL. The samples were electrophoresed together, transferred onto nitrocellulose membrane (Bio Rad, USA) by using ATTO Corporation AE 6687 (Japan)

semi-dry blot apparatus for Western blot analysis. Anti-OMV serum from immunized mice was used. Presence of immunogenic components in OMVs was further determined by using convalescent serum from mice. Here, only OMVs were electrophoresed and blotted using convalescent serum. Blots were either observed by using alkaline phosphatase substrate BCIP/NBT (MP, USA, Cat# 980621) or Amersham™ ECL™ Prime Western Blotting Detection Reagent (GE Healthcare, UK, Lot 15839044). In all the cases, same condition and equipment were being followed and used, respectively.

Dot blot assay

Dot blot analysis was done as described previously [27]. Briefly, LPS from two strains were taken and blotted directly onto a nitrocellulose membrane in different concentrations. The membrane was then washed with Tris-Buffered Saline (TBS) containing 0.1% Tween-20. The membrane was then incubated with anti-OMV anti-sera from immunized mice and anti-mouse IgG-HRP secondary antibody (Sigma, USA) successively and the blot was then finally developed by chemiluminescence.

ELISA

Different immunoglobulins; e.g. IgG and its sub-types (IgG1, IgG2a, IgG3), and IgA, sIgA and IgM were measured by ELISA as stated by Keren [29]. Briefly, disposable polystyrene micro-titer wells (Nunc, Denmark) were separately coated with two different typhoidal OMVs (5 µg/well) as shown in Table 1 and incubated for 18 h at 4°C. Wells were washed and blocked with Bovine Serum Albumin (BSA; Sigma-Aldrich, USA). After washing the wells with PBS-T (PBS with 0.5% Tween-20, Sigma-Aldrich, USA) and incubated with serially diluted serum samples, 100 µL HRP-conjugated goat anti-mouse immunoglobulin was added and incubated. After washing with PBS, the substrate o-phenyl-Di-amine (OPD) was added to each well followed by stopping the reaction after 10 min by adding 100 µL of 2 N sulphuric acid. OD₄₉₂ was taken afterwards. The experiments were repeated three times for each immunoglobulin, with the immunized and non-immunized serum, collected from individual mice, before, during and after immunization. The same procedure was carried out when ELISA were done against Vi-polysaccharide (Batch number: T030516, Bio-Med, India) of *S. Typhi*.

Measurements of CD4+, CD8+ and CD19 expression in splenic cells by flow cytometry analysis

Spleens were collected from both naïve and immunized BALB/c mice and stained for FACS analysis. Expression of CD4, CD8a and CD19 were checked by using PE-tagged antibodies from Miltenyi Biotech, Germany (CD4-PE: 130-116-509; CD8a-PE: 130-109-247; CD19-PE: 130-12-035, REA control: 130-104-613) [30]. Expression was checked using a FACS Aria II flow cytometry machine. Data was being calculated using a FACSDiva version 6.1.3 software. Percent up-regulation was measured using the following formula:

$$\% \text{up-regulation} = \frac{\text{Delta mean fluorescence intensity}}{\text{delta mean PE} - A} \times 100;$$

Where delta mean fluorescence intensity was the difference between delta mean fluorescence intensity of immunized–delta mean fluorescence intensity of control.

Cytokine assays

i. Splenocyte re-stimulation assay. After 1 week from the end of last immunization, splenic cells from immunized BALB/c mice were cultured for 2 hours in complete RPMI 1640

(MP Biomedicals, USA) containing 10% FBS (Gibco, Life Technologies, USA). Cells were then treated with 10 $\mu\text{g}/\text{ml}$ of bivalent OMV and incubated in 37°C for 24 hours in presence of 5% CO_2 [15]. Different cytokines, namely IFN- γ , IL-6 and IL-17 were then measured by cytokine ELISA kit (Invitrogen, USA).

ii. Isolation of bone marrow-derived dendritic cells (BMDCs). Immature bone marrow was isolated from naïve BALB/c mice and kept in RPMI 1640 medium supplemented with 10% FBS, Granulocyte-Macrophage Colony Stimulating Factor (GM-CSF) until their maturation. Matured BMDCs were stimulated with 10 $\mu\text{g}/\text{ml}$ of bivalent OMV for 24 hours in presence of 5% CO_2 [15]. Th17-polarizing cytokines were then measured using cytokine ELISA kit (Invitrogen, USA).

iii. BMDC-splenic CD4 T cell co-culture. BMDCs were isolated from naïve BALB/c mice and cultured like mentioned above. Splenic cells from both naïve and immunized BALB/c mice were collected, CD4 T cells were isolated (Dyna[®] Mouse CD4 Negative Isolation Kit, Cat. No. 114.15D, Invitrogen Dynal AS, Oslo, Norway) and cultured with BMDCs at a 4:1 ratio for 8 hours in an U-bottom microtiter plate under the same condition with a stimulation of 10 $\mu\text{g}/\text{ml}$ bivalent OMV [31]. Th1 and Th17-polarizing cytokines were measured using cytokine ELISA kits from Invitrogen, USA according to the manufacturer's instructions.

Intra-peritoneal mice model for typhoidal and paratyphoidal salmonellae and determination of LD₅₀

Mice were challenged intra-peritoneally with 1×10^3 to 1×10^9 doses of challenge bacteria for the determination of LD₅₀ value. A total of 24 mice were divided into four groups. 6 mice per group were challenged intra-peritoneally with one of the following four bacterial concentrations: 1×10^3 CFU/ml, 1×10^5 CFU/ml, 1×10^7 CFU/ml and 1×10^9 CFU/ml. The mice were then kept for 7 days to record mortality based on humane endpoint analysis. In all cases, including survival analyses, the following points were considered while determining the humane endpoint: reduction in body weight (more than equal to 20% than that of the healthy animals), with severe lethargy, reduction in rectal temperature (more than equal to 3 degree C than that of the healthy animal). Mice were then kept for 4 more hours to observe whether their health situation can revert back to normal. After the elapse period, they were euthanized using Ketamin hydrochloride via parenteral route. This preliminary study on the mortality of mice indicated the LD₅₀ value must lie somewhere between 1×10^7 CFU/ml and 1×10^9 CFU/ml. So, we then challenged a group of 12 mice (which were divided into 2 separate groups; i.e. 6 in each group) fresh mice with the following concentrations of bacteria: 2×10^7 CFU/ml and 2×10^8 CFU/ml. After finding the LD₅₀ value to be 2×10^7 CFU/ml for both the challenge strains, mice were infected intra-peritoneally [32] with LD₅₀ dose to check the systemic spread of the bacteria. They were kept in normal condition in the animal cages. The infected mice were also observed for physiological changes in their body such as hunched back, lethargy, piloerection etc. Internal organs like spleen and liver were isolated on 1 to 5 dayspost infection (1–5 dpi) for the detection of bacteria in the organs. Colonization in small, large intestine and stool were also evaluated. After the proper repetition and development of this mice model, we moved forward towards functional protective efficacy studies. In all the cases, remaining mice were euthanized at the end of the experiment. Mice were checked frequently at a 1-hour interval.

Protective efficacy studies

i. Challenge study. In challenge study, we have taken three groups of mice, 10 animals per group. The animals of each non-immunized, immunized and PBS group were challenged

intra-peritoneally with ($>LD_{50}$) 1×10^8 CFU/ml of heterologous virulent bacteria after one week of last immunization. After challenge, the infected mice were kept for 9 days for monitoring and survival and colonization studies. There was one more group, namely the PBS-challenged group which was inoculated with 100 μ l PBS and kept for 9 days. The same system was followed for mice when they were challenged with sub-lethal dose (3×10^5 CFU/ml) heterologous typhoidal strains. Spleen and liver were isolated, homogenized, serially diluted and plated to see the bacterial content of the infected animals 3 Days Post Infection (DPI). Bacterial load in small intestine was evaluated on 3–5 DPI from 3 mice per group.

ii. Adoptive transfer. Serum and spleen from immunized and non-immunized mice were obtained 1 week after the last immunization. For serum transfer, each naïve mouse was injected via tail vein with 100 μ l from either OMV-immunized or non-immunized mice. For splenocyte transfer, spleens were disassociated with a cell strainer and a sterile plunger from a 10-ml syringe. After the R.B.C.s were lysed by R.B.C. lysis solution (Sigma-Aldrich, USA), splenocytes were re-suspended in PBS and 100 μ l of this cell suspension (containing 1×10^6 splenocytes) was injected in naïve mice via tail vein. Mice were then challenged intra-peritoneally with heterologous strains of the same species at a concentration of 1×10^6 CFU/ml to observe the passive protection, if any. One group of mice was challenged on the same day of the adoptive transfer and the other group was challenged after seven days. Spleen and liver were isolated on 3rd day post-infection, homogenized, serially diluted and plated as indicated before.

Serum agglutination

Challenge strains were transformed with GFP plasmid. 1×10^8 CFU/ml log-phase GFP-tagged challenge cells were incubated with heat-inactivated non-immunized and immunized sera at 37°C for 1 hour for classical serum agglutination to occur. Visible clumps were then observed under fluorescence microscope.

Motility assay

Motility assay was done as previously described, with modifications [33]. Briefly, heat-inactivated immunized and non-immunized serum samples were mixed with PBS at a concentration of 1:400 and poured on soft agar (0.3%) plates. The plates were kept for an hour to get the serum mixed PBS to soak in the plate. After the plates became dry, log-phase bacteria ($OD_{600} = 0.8$) were pricked in the middle of the plate. The plates were then incubated at 37°C for 24 hours.

Mucin penetration assay

The assay was performed according to previously described protocol [34]. In brief, 1% mucin columns were prepared in 1 ml syringes. Bacteria were incubated with heat-inactivated non-immunized and immunized sera for 1 hour at 37°C. Cultures were then taken and 100 μ l of culture containing equal number bacteria (1×10^7 CFU/ml) were added from the top of 1% mucin columns. Columns were then kept at 37°C under static conditions. After 30 min of incubation 500 μ l fractions were collected from the bottom of the columns, serially diluted and plated onto TSA to measure the bacterial count.

Opsonization assay

Opsonization by peritoneal macrophage was done as described previously [35]. Briefly, mouse peritoneal macrophages were harvested by flushing the peritoneal cavity of BALB/c mice with ice-cold PBS. Collected cells were then centrifuged and re-suspended in pre-warmed RPMI

(Gibco, USA) media supplemented with 10% FBS. Approximately, 5×10^5 cells were seeded to each well in 12-well plates and cultivated in CO₂-incubator (Thermo Fisher Scientific, USA) for 2 hours at 37°C. Cells were washed and then log-phase bacteria (either immune serum-treated or non-immune serum-treated) were added at a M.O.I. of 1:100 and were kept for 30 minutes. Cells were washed with PBS and incubated with pre-warmed RPMI media for another 30 minutes. Then the cells were washed and incubated in pre-warmed RPMI media for 0 and 60 minutes. Finally, the cells were lysed with 0.1% Triton X-100 and serially diluted and plated.

Statistical analysis

In the majority of cases, the data presented are not normally distributed due to biological variation. Therefore, non-parametric tests were used for all data analysis. Comparison between two categorical variables was made using the two-tailed student's t test. Comparison between multiple categorical variables was made using the one-tailed student's t test. Each experiment was repeated at least three times. A *P* value of either <0.05 or <0.01 were considered significant. GraphPad Prism 5 and Microsoft Excel, both were used in Windows OS for all the statistical analyses.

Results

Basic characterization of salmonella strains used in the study

As our strains were clinical isolates, we wanted to be assured about their genotypic and phenotypic properties. Presence of genus-specific *prtA* in all four strains and presence of *fliC-j* in *S. Typhi* strains and *fliC-a* in *S. Paratyphi A* strains were observed. Presence of *FliC-j* was determined by PCR-based method, whereas only *FliC-d* was observed via serological studies. This has been reported previously and perfectly coincides with a previous data and supports the genotypic evidence that our strains were indeed typhoidal salmonellae as shown in [S1 File](#) [18, 36, 37]. Very small change in gene level may sometimes be unrecognizable in serological motility assays, which increases the chance of a false result ([S1 File](#)) [35, 38]. But since our objective was just to prove that the strains are indeed either *S. Typhi* or *S. Paratyphi A*, we have not done further classifications.

Isolation and characterization of *S. Typhi* and *S. Paratyphi A* OMVs

Both *S. Typhi* and *Paratyphi A* secrete OMVs during log phase of growth ([Fig 1Ai and 1Bi](#)). In electron microscopic analysis, we found different size of isolated OMVs. The sizes of these OMVs were distributed between 130–300 nm ([Fig 1Aii and 1Bii](#)) and the *S. Typhi* OMVs were relatively larger in size in comparison to the *S. Paratyphi A* ([Fig 1C](#)). Then, we quantified the protein and O antigen of both OMVs and we found both OMVs contained nearly 400 µg/ml protein and 250 µg/ml O-Ag as shown in [Table 1](#) above. Furthermore, SDS-PAGE analysis showed protein bands of 40KD to 62KD in case of *S. Typhi* OMVs, whereas, bands of 33KD to 73KD were shown in case of *S. Paratyphi A* OMVs. Other than that, faint bands were observed in both cases ([Fig 1D](#)). We further evaluated the native OMPs of these two typhoidal salmonellae to compare the protein profile with isolated OMVs. A vast difference in banding patterns ([Fig 1E](#)) indicated that our OMVs contain constituents other than the OMPs.

We further evaluated the OMV-associated LPS after chemically neutralizing the proteins with Proteinase-K. Proteinase-K treated OMVs were found to be associated with LPS of low molecular weight which might be an effect of the change in the structure of OMVs after the

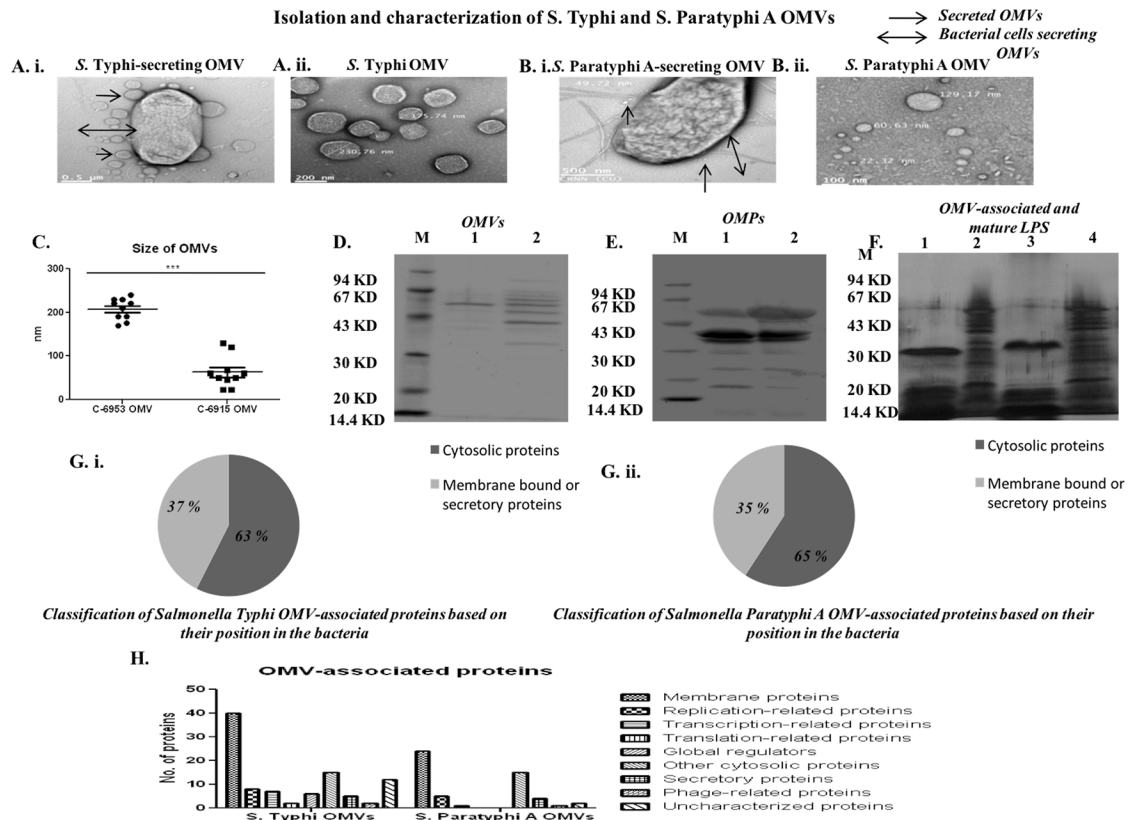


Fig 1. Isolation and characterization of OMVs. **A. i.** OMVs attached to *S. Typhi* bacteria and **A. ii.** Isolated OMVs from *S. Typhi*. **B. i.** OMVs attached to *S. Paratyphi A* and **B. ii.** Isolated OMVs from *S. Paratyphi A*. **C.** Sizes of isolated OMVs. 10 different OMVs were chosen from 10 different fields and their sizes were noted down. Each dot represents an individual OMVs size. **D.** SDS-PAGE profile of OMVs extracted from two strains of typhoidal salmonellae. Lane M: Low molecular weight marker (Bangalore GeNei), Lane 1: *S. Typhi*, Lane 2: *S. Paratyphi A* OMVs. **E.** SDS-PAGE profile of OMPs extracted from two strains of typhoidal salmonellae. Lane M: Low molecular weight marker (Bangalore GeNei), Lane 1: *S. Typhi*, Lane 2: *S. Paratyphi A* OMPs. **F.** Different natures of OMV-associated and mature LPS. Lanes 1 & 3: Proteinase K-treated OMV of *S. Typhi* and *S. Paratyphi A*, respectively. Lanes 2 & 4: Extracted mature LPS of *S. Typhi* and *S. Paratyphi A*, respectively. **G. i.** Pie-chart showing the presence of hypothetical cytosolic and membrane-bound proteins in *S. Typhi* OMVs. **G. ii.** Pie-chart showing the presence of hypothetical cytosolic and membrane-bound proteins in *S. Paratyphi A* OMVs. Both cases indicate the abundance of cytosolic proteins instead of membrane-bound proteins for both OMVs. **H.** Classification of OMV-associated hypothetical proteins according to their functions. The OMV-associated proteins unique to *S. Typhi* and *Paratyphi A* were grouped based on their biological processes and molecular functions, and their proportions are plotted.

<https://doi.org/10.1371/journal.pone.0203631.g001>

treatment (Fig 1F). Lanes 1 and 3 in Fig 1F are OMV-associated LPS isolated from the OMVs. On the other hand, lanes 2 and 4 in the same figure are native, mature LPS isolated from the bacteria itself. The bands located between the core and lipid A represent LPS synthesis intermediates consisting of the core and different amounts of oligosaccharide subunits in case of native LPS preparation [39]. Literature suggests, the native LPS isolated from the bacteria itself contains O-Ag, core polysaccharide and lipid A. On the other hand, the OMV-associated LPS contain mature LPS structure and free lipid A. In case of *S. Typhimurium*, OMVs contain deacylated LPS, but the bacteria have hexa-acylated LPS [40]. This might be another reason of the observed change in banding pattern. This also indicates the vesicles not remaining intact once the treatment was over. This might also be the reason of the structural dissimilarity observed. As the banding pattern was much different in TCA precipitation, our immunogen must contain OMVs as a major constituent (S12 File).

Determination of the OMV proteome

The MALDI-TOF/TOF spectrums were shown in [S4](#) and [S5](#) Files. A total of 100 hypothetical proteins in case of *S. Typhi* OMVs as shown [S6–S9](#) Files and 42 hypothetical proteins in case of *S. Paratyphi A* OMVs as shown in [S10](#) and [S11](#) Files were found. The comparison of the sub-cellular locations of the OMV protein components with that of *Salmonella* genome-inferred proteins revealed that OMVs derived in the exponential phase of growth cycle contains both cytosolic as well as membrane proteins ([Fig 1Gi and 1Gii](#)). The proteomic profiling of these OMVs ([Fig 1H](#)) revealed hypothetical protein compositions in the isolated OMVs, which indicates that the OMVs cargo depends on the growth conditions and provides a deeper insight into how *Salmonella* utilizes OMVs to adapt to environmental changes. Although the proteomic analysis does not suggest that these proteins are the sole proteins that are present in OMVs, but these are the proteins which occur most abundantly in OMVs. There might be a number of other proteins which we were unable to isolate using SDS-PAGE.

Immunogenicity of bivalent OMVs

i. Activation of humoral immune response by bivalent OMVs. In the next experiment, we measured the generation of systemic as well as mucosal humoral immune response after oral immunization of female mice with four doses (25 µg/dose) of bivalent immunogen. Our data showed significantly higher levels of serum IgG, IgG1, IgG2a, IgG3, IgM, IgA antibodies against each OMV up to 90-days post 1st immunization. The responses differed from each other significantly (P value < 0.005). Significant higher level of IgG1, IgG2a, IgA were seen after the second dose of immunization. Although the titers were found to be above the detection level even after 90-days from day 0, the highest peaks were found to be between day 28 and day 35. Simultaneously, we compared immune responses between OMVs and heat-killed immunogen and we found bivalent OMVs are more immunogenic than heat-killed immunogen. ([Fig 2A, 2B and 2C](#)).

S. Typhi has a capsular Vi-polysaccharide on the outer membrane [41]. In our study, we have found that adequate amount of Vi-polysaccharide specific anti-Vi-polysaccharide serum IgG was generated after oral immunization ([Fig 2D](#)). We also observed mucosal immune response from stool diluents and found the same trend as noted before in case of serum antibodies ([Fig 2E](#)).

Moreover, our bivalent typhoidal salmonellae OMV formulation induces a higher IgG3 response than IgG1, against each component of OMVs ([Fig 2Fi and 2Fii](#)). This result indicates that, bivalent OMVs immunization elicited Th1-cell mediated immunity, manifested by higher IgG3 response than IgG1 against each component of the OMV. The overall antibody titer was increased during the immunization process and it reached a peak near 28-day post-immunization. The immunoglobulins were detectable until day 90. From, the above result we can conclude that our bivalent immunogen is immunogenic and more immunogenic than heat-killed immunogen.

ii. Specificity of the antibody response via immunoblot. In immunoblot analysis, immune-dominant bands were seen using anti-OMVs serum ([Fig 3A](#)). Lane 1 and 2 shows immune-dominant bands from OMVs separated by SDS-PAGE. A range of proteins, starting from 20 and ending near 90 KD regions, were found to be immunogenic. Immune-dominant bands against OMV-associated and native, mature LPS was seen in lane 3, 4, 5 and 6. Bivalent OMV-immunized mice serum was also used to detect immunogenicity of mature LPS from these two strains by dot blot analysis ([S12 File](#)). Although the OMV-associated LPS and native LPS are structurally different, but they both were recognized by the polyclonal anti-OMV serum raised in mice. In case of purified outer membrane proteins of *S. Typhi* and *Paratyphi A* against OMV-immunized sera, several outer membrane proteins of *S. Typhi* and *Paratyphi A*

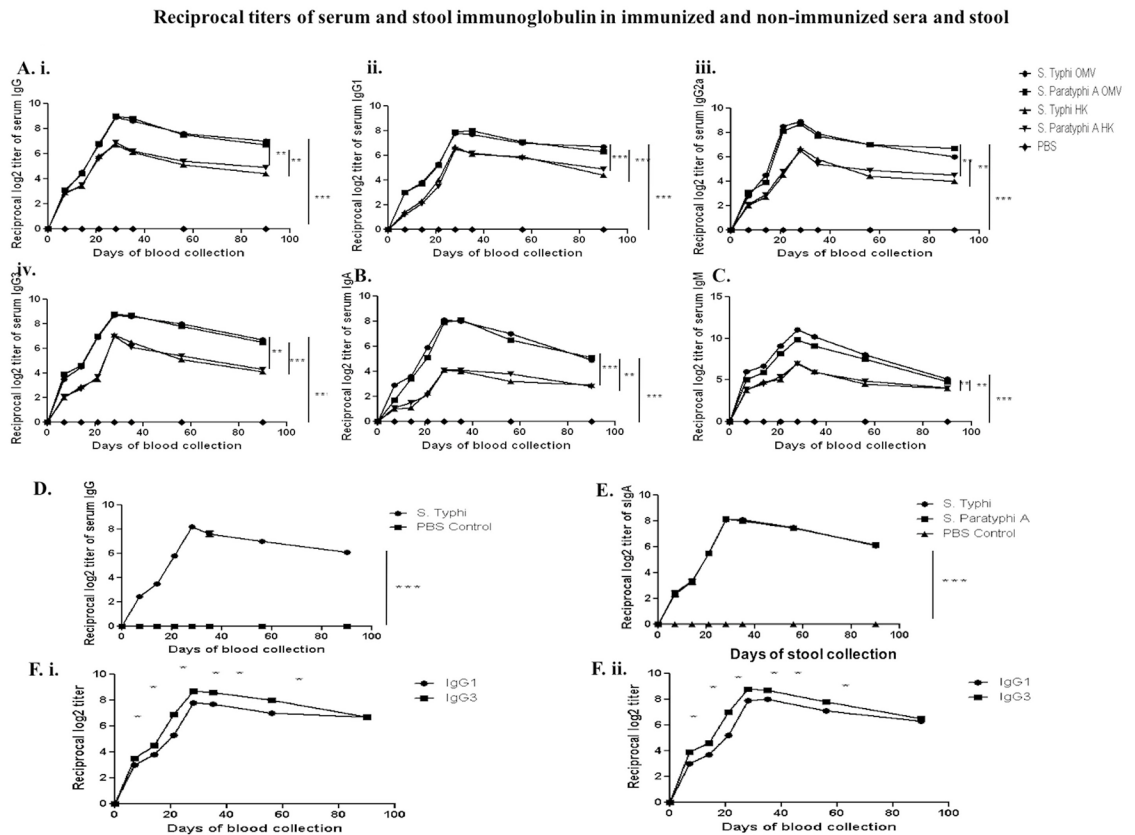


Fig 2. Serum immunoglobulin titers in immunized sera were separately measured against each component OMVs of bivalent OMV and heat-killed (HK) formulations. ELISA plates were coated with either each component of OMVs or heat-killed immunization and either bivalent immunized mice serum or heat-killed immunized mice serum was used, at appropriate times. While doing ELISA against Vi-polysaccharide, ELISA plates were coated with market-available Vi-polysaccharide. A. Serum IgG (i), IgG1 (ii), IgG2a (iii), IgG3 (iv); B. Serum IgA; C. Serum IgM; D. Anti-Vi serum IgG; E. sIgA; F. i. ii. Serum IgG1 and IgG3 response against each of the two OMVs, *Salmonella* Typhi and Paratyphi A, respectively at pre-immunization, immunization and post-immunization periods. High serum IgG3 titer against IgG1 indicates higher Th1 cell-mediated immune response in adult mice sera after three doses of immunization. The horizontal axis indicates the days of blood collection. Data represented here are the mean values \pm Standard Deviation (SD) of three independent experiments. No statistically significant difference in overall antibody response was observed against each of the two OMVs (P values >0.05). The differences in post-immunization day wise response of each of the studied antibodies against each of the two OMVs were highly significant (P value < 0.005).

<https://doi.org/10.1371/journal.pone.0203631.g002>

were found to be immunogenic in nature (lane 7, 8). The last two lanes (lanes 9 and 10), are showing the immunogenic nature of our immunogen against whole cell lysate isolated from these two strains. We found a number of proteins to be immunogenic in nature. To detect immunogenic proteins of OMVs, we also generated convalescent sera in mice by infecting them separately with wild type strains of *S. Typhi* and *Paratyphi A* intra-peritoneally. We did immunoblot using these immunized sera against two OMVs and we found immune-dominant bands in the region of nearly 20–40 KD (Fig 3B). From this study, we can conclude that both OMVs contained different immunogenic proteins and also different immunogenic outer membrane proteins.

Induction of cell-mediated immune response—Cytokines from BMDCs, splenic cells and BMDC-splenic CD4 T cell co-culture and FACS analysis

i. Production of Th1-Th17 immune response provoking cytokines were evident ex vivo. After three successive oral immunizations, on the 35th day, splenic cells were isolated

OMV immunization elicits immune responses to both, OMV-constituent and other proteins and lipids

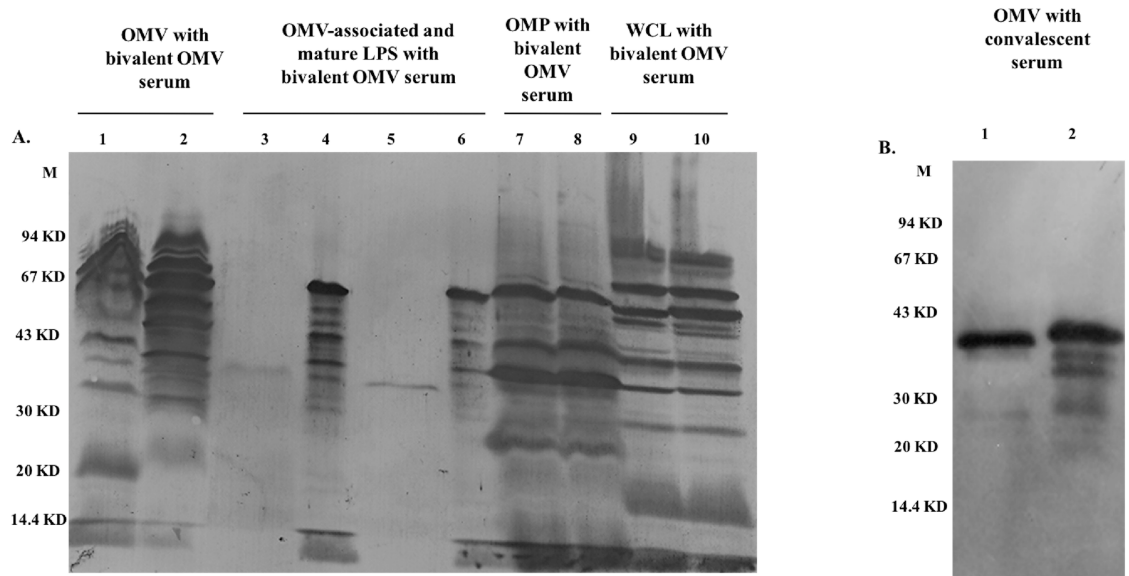


Fig 3. Representative immunoblot analysis against OMVs, proteinase K-treated OMVs, isolated OMPs, whole cell lysate (WCL) using the same anti-OMV mouse serum and immunoblot of OMVs using convalescent sera of two typhoidal strains. A. Immunoblot against each component of the OMVs, LPS, OMPs and WCL of the bivalent formulation probed with 28th day's anti-bivalent OMVs serum from a single mouse. Lane M: Pre-stained molecular weight marker (Bangalore Genei), Lane 1: S. Typhi, Lane 2: S. Paratyphi A OMV. Lane: 3, 5: OMV-associated LPS of S.Typhi and S. Paratyphi A, respectively. Lane 4, 6: Isolated native LPS from S.Typhi and S. Paratyphi A, respectively. Lane: 7, 8: S.Typhi and S.Paratyphi A OMPs. Lane: 9, 10: S. Typhi and S.Paratyphi A WCL. **B.** Immunoblot analysis against each component of the OMVs of the bivalent formulation using convalescent sera of mice. Lane: 1 and 2: S.Typhi and S.Paratyphi A OMVs.

<https://doi.org/10.1371/journal.pone.0203631.g003>

from both immunized and non-immunized mice and were treated with bivalent OMVs for 24 hours *in vitro* at 37°C, in 5% CO₂. Protein-level up-regulation of IFN-γ, IL-6 and IL-17 were found (Fig 4Ai, 4Aii and 4Aiii).

Matured dendritic cells were also found to be secreting significant amounts of IL-6, IL-23 and IL-12p70 (Fig 4Bi, 4Bii and 4Biii). Co-cultured matured BMDCs and splenic CD4 T cells were found to be secreting significant amounts of IFN-γ, IL-6 and IL-17 (Fig 4Ci, 4Cii and 4Ciii). All these results indicate a strong Th1-Th17-biased immune response in immunized mice following OMV immunization.

ii. FACS-up-regulation of B- and T-cell specific surface markers indicates the activation of an adaptive immune response following OMV immunization in mice. We tested the changes in expression of CD4, CD8a and CD19 on splenic cells. The expression of CD4, CD8a and CD19 was greatly increased (S13 File, Fig 4D; Table 2). This result indicates up-regulation of both humoral and cellular arms of the immune response.

Protective efficacy study in intra-peritoneal challenge adult mice model

We have standardized the intra-peritoneal mice model of typhoidal *Salmonella*. We saw a clear dose-dependent response in terms of survival of the infected mice, with the LD₅₀ value to be 2 x 10⁷ CFU/ml for both the challenge strains of S. Typhi and S.Paratyphi A (S14 File). Along with that, we have found strong association of dose-dependent response with colonization rate as well. In our time-dependent approach, we have found both typhoidal salmonellae strains to be present in the spleen and liver after 2–3 days.

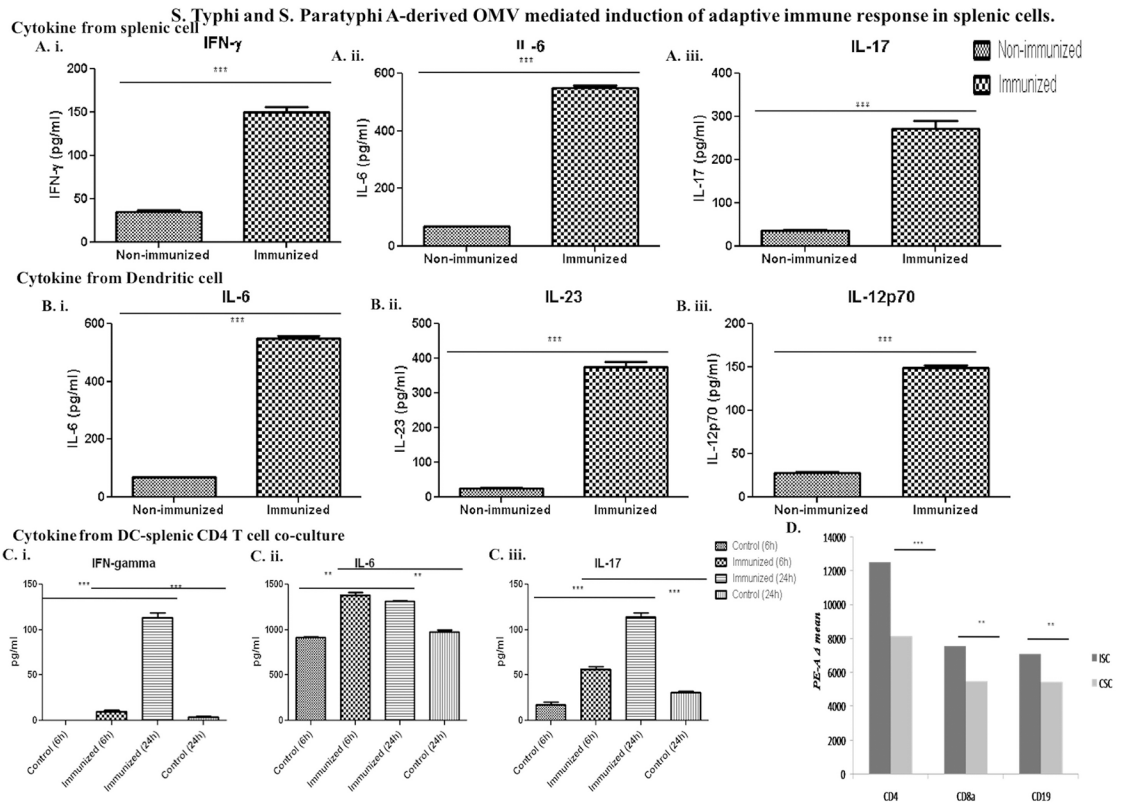


Fig 4. Bivalent OMVs induces the production of Th1 and Th17 polarizing cytokines. A. Splenic cells after immunization and B. In naïve matured *ex vivo* stimulated BMDCs. Splenic cells collected from immunized mice and BMDCs were collected from non-immunized and kept in GM-CSF supplemented media until their maturation and then were treated with 10 µg/ml bivalent OMV antigens. After 24 hours, levels of IFN-γ, IL-6 and IL-17 from splenic cells and IL-6, IL-23, IL-12p70 were measured by ELISA (n = 3, each group). C. BMDCs from naïve mice were collected and incubated until maturation and splenic CD4 T cells from immunized and naïve mice collected and co-culture with the matured BMDCs. Stimulation of these co-cultured cells with the same OMVs produced significant amounts of IFN-γ, IL-6 and IL-17 which were measured by ELISA (n = 3, each group) (** P < 0.005). D. Up-regulation of CD4, CD8a and CD19 was shown in terms of PE-A values. (n = 3, each group) (** P < 0.005).

<https://doi.org/10.1371/journal.pone.0203631.g004>

Table 2. Up-regulation of different surface markers by FACS.

	Markers	CSC			Mean	Δ mean from 3 animals	STDEV of mean	ISC			Mean	Δ mean from 3 animals	STDEV of mean	Difference in Δ mean	% up-regulation
1 st experiment	CD4	8022	8144	8654	8273.33	8151.77	105.44	12908	12304	12475	12562.33	12535.11	62.14	4383.33	34.96
	CD8a	5754	5123	5671	5516	5503.44	18.93	7668	7126	7892	7562	7551.33	32.02	2047.88	27.11
	CD19	5475	5124	5612	5403.66	5456.55	45.84	7099	6830	7109	7012.66	7089.55	83.27	1633	23.03
1 st repeat	CD4	7900	8044	8311	8085			13123	12401	12213	12579				
	CD8a	5500	5256	5689	5481.60			7789	7098	7843	7576.66				
	CD19	5322	5221	5900	5481			7121	6900	7213	7078				
2 nd repeat	CD4	8245	7810	8236	8097			12823	12132	12437	12464				
	CD8a	5409	5651	5478	5512.60			7956	7245	7345	7515.33				
	CD19	5345	5145	5965	5485			7231	6846	7457	7178				

Values are means ± SD of triplicate biological and technical repeats.

<https://doi.org/10.1371/journal.pone.0203631.t002>

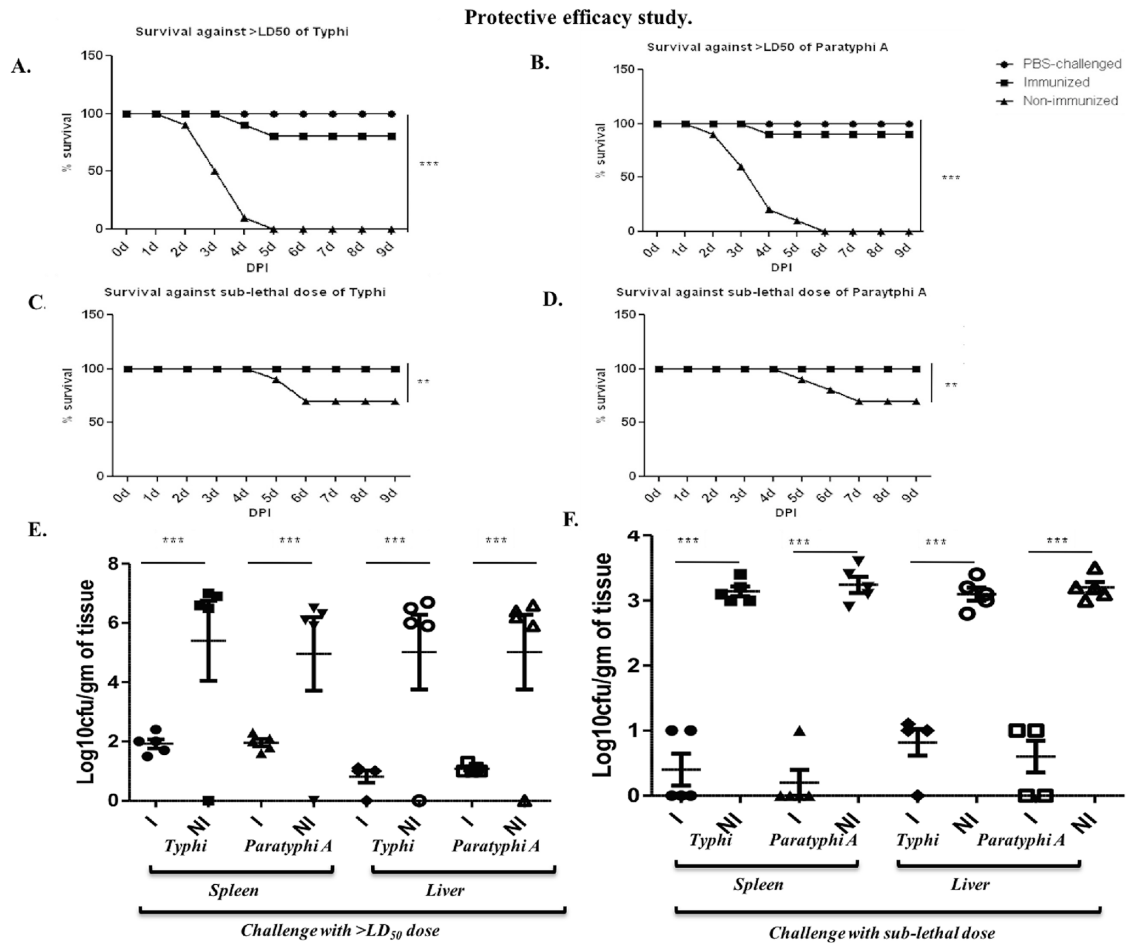


Fig 5. Immunization with the bivalent OMVs provides protection in adult mice model. Mice were immunized with 1:1 mixture of typhoidal OMVs using 25 µg total OMVs per dose and a three-dose immunization. Mice were then challenged with 1×10^8 CFU/ml and 3×10^5 CFU/ml of each challenge strains and observed for the period of survival for 9 days. **A.**, **B.** Percent survival against *S. Typhi* and *S. Paratyphi A* lethal challenge and **C.**, **D.** Percent survival against *S. Typhi* and *S. Paratyphi A* sub-lethal challenge. **E.** An infection with lethal dose of typhoidal strains caused a huge colonization of systemic organs after both *S. Typhi* and *S. Paratyphi A* infection. **F.** A lower level of colonization of systemic organs was seen in mice challenged with sub-lethal dose of infection.

<https://doi.org/10.1371/journal.pone.0203631.g005>

After developing the mice model, we wanted to check how the immunogen was working. Before assessing the effectiveness of bivalent immunogen, we wanted to check the nature of protection in monovalent OMV-immunized mice. We found that, monovalent OMV-immunized mice were protected against homologous strains but not against heterologous strains (S15 File). Then we moved onto deciphering the effect of bivalent OMV.

In protective efficacy study, we used the same adult mice model. Immunized and non-immunized mice were intra-peritonealchallenged with the doses described in the methods. We kept a negative control which we termed PBS-challenged to eliminate any bias. In case of non-immunized mice, all the mice died within 3–5 days (Fig 5A and 5B). But, 80% and 90% immunized mice were survived after 9 days. The sub-lethal dose, on the other hand, was only able to kill 30% mice in non-immunized challenged groups (Fig 5C and 5D). All the immunized mice survived this infection. Negligible effect was observed in terms of change in body weight of the immunized mice. Colonization data suggests the immunogen’s potent nature

against systemic spread and infection of typhoidal salmonellae in mice and it indeed was protecting the mice infected with both the doses of infection (Fig 5E and 5F).

Reduction in body weight was observed in non-immunized mice after both lethal and sub-lethal challenges (S16 File). Although much less reduction in body weight was observed after sub-lethal challenge, a higher than LD₅₀ dose caused significant change in body weight. Bivalent OMV-immunized mice were shielded from the infection that occurred in the non-immunized mice (Fig 5 and S16 File). At 3 DPI, we observed 10⁵–10⁸ CFU/gm of infection in spleen, liver in case of non-immunized mice, whereas, 10¹–10² CFU/gm of infection in spleen, liver was the highest colonization found in immunized mice after higher than LD₅₀ challenge (Fig 5E). After sub-lethal challenge lesser level of colonization was found as expected (Fig 5F). Colonization in small intestine (S17 File).

Adoptive transfer of splenocytes and sera from immunized mice protects naïve mice from typhoidal salmonellae-induced lethal infection

To find out whether humoral or T-cell induced cellular immunity is important for the protection against *Salmonella*, we transferred serum and splenocytes via tail vein in non-immunized mice (S18 and S19 Files). We found both immunized serum and splenocytes had protected the naïve mice almost equally. We did survival assay of these mice against challenge bacteria and found it to be 70–100% protective in both cases after challenging them on day 0. We have also measured the systemic spread of the challenge strains in adoptive transferred naïve mice. Colonization in spleen and liver were found to be in the range of 1 x 10⁶–1 x 10⁷ CFU/gm of the respective organs in case of control or non-immunized mice (S18 File). Whereas, immunized sera and splenocytes recipient mice showed significantly lower colonization. We challenged the other adoptively transferred mice on day 7 and a slight increase in the colonization was seen (S19 File). This result suggested that protection against *Salmonella* depends on both humoral and cell mediated immunity.

Mode of protection

Bivalent OMV-immunized mice sera agglutinate wild-type bacteria in vitro. To check if the LPS and Vi-polysaccharide specific antibody generated by OMVs immunization can detect the bacterial outer surface of both *S. Typhi* and *Paratyphi A* we did agglutination test in presence of OMVs immunized sera and non-immunized sera (heat-inactivated). We found non-immunized sera treated wild-type bacteria did not show any agglutination (Fig 6Ai and 6Bi). On the other hand, visible clump or bacterial agglutination in immunized sera treated group under fluorescence microscope (Fig 6Aii and 6Bii). Specific arrows were being used to indicate both non-agglutinated and agglutinated bacteria. This result indicates that; our bivalent OMV-immunized sera can activate complement mediated killing or innate immune response.

Inhibition of *S. Typhi* and *Paratyphi A* motility and mucin penetration ability in vitro by antibodies from OMV-immunized mice. In our next experiment, we did heat-inactivation of immunized sera and non-immunized sera to deactivate the complement and incubated heat-inactivated immunized and non-immunized serum with *in vitro* grown *Salmonella* strains. We found significant inhibition of the *Salmonella* motility. Immunized serum, compared to non-immunized serum showed significant difference in the zone of spread of bacteria (Fig 7A, 7B and 7C). This result suggests that our bivalent formulation is indeed resulted in agglutination of bacteria which could be a way towards protective nature of this immunogen.

Next, we investigated mucin penetration ability of both typhoidal *Salmonella* strains in presence of heat-inactivated immunized and non-immunized sera. We found immunized

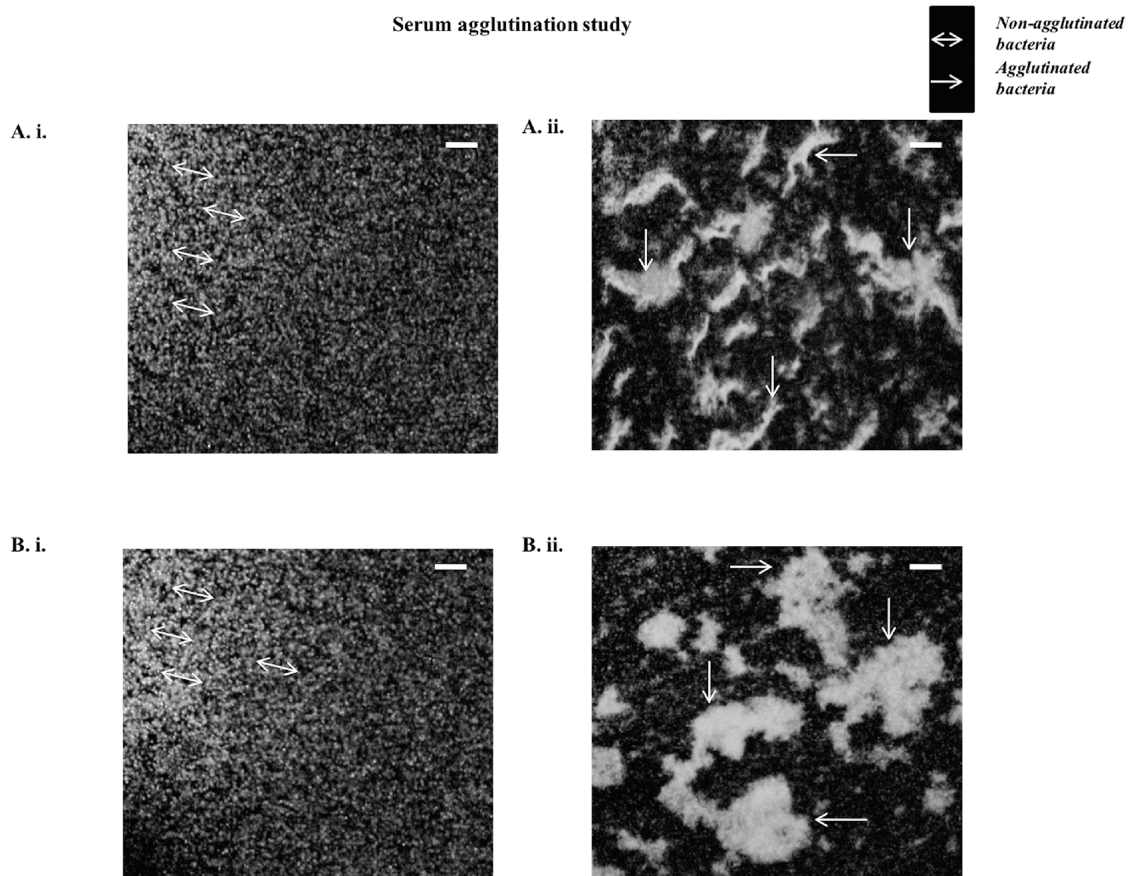


Fig 6. Heat-inactivated serum from bivalent immunized mice forms agglutination when comes in contact with the GFP-tagged clinical isolates of *S. Typhi* and *Paratyphi A*. A. i. *S. Typhi* treated with heat-inactivated non-immunized serum, A. ii. *S. Typhi* treated with heat-inactivated immunized serum. B. i. *S. Paratyphi A* treated with heat-inactivated non-immunized serum, B. ii. *S. Paratyphi A* treated with heat-inactivated immunized serum. Bar represents 10 µm.

<https://doi.org/10.1371/journal.pone.0203631.g006>

serum-treated bacteria showed lesser mucin penetration ability in the range of 2×10^3 CFU/ml to 3×10^3 CFU/ml. Whereas, the ability of penetration by non-agglutinated bacteria were much higher, in the range of 3×10^7 CFU/ml to 4×10^7 CFU/ml (Fig 7D). This data indicate that OMVs specific sera significantly inhibit motility which can inhibit mucin penetration that can help to inhibit colonization or invasion into the epithelial cells.

OMVs specific serum induces opsonization in peritoneal macrophage

The bacteria-killing ability of the isolated immunized sera was evaluated in peritoneal macrophages. Bacteria incubated with mouse anti-bivalent OMV sera were killed more efficiently by the macrophages than that of the bacteria incubated with non-immunized sera. Bivalent sera had efficiently increased phagocytosis ability, thus increasing the bacteria killing property (Table 3).

All the above results suggest that both humoral and cellular immunity confer the protective effect of *S. Typhi* and *S. Paratyphi A* bivalent OMVs-immunization.

Discussion

There is an urgent need for a suitable broad spectrum typhoidal *Salmonella* vaccine [1]. Still no such vaccines have the ability to provide a complete protection against *S. Typhi* and *Paratyphi*

Motility assay

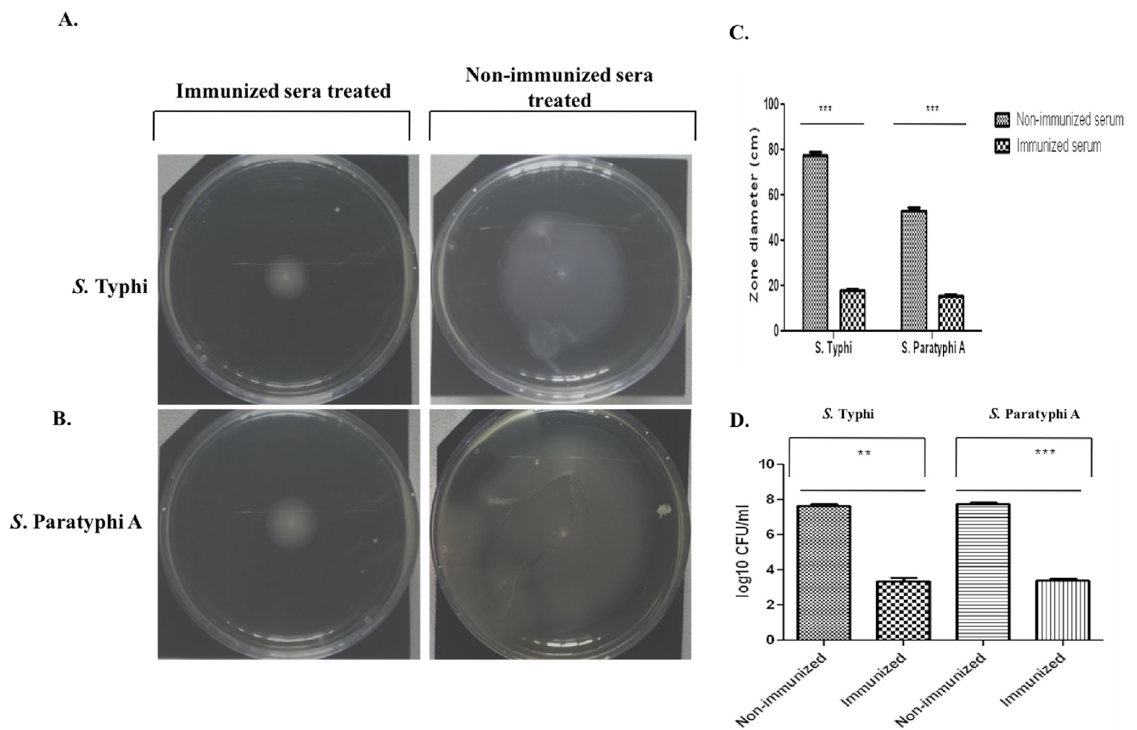


Fig 7. Serum from bivalent immunized mice inhibits S. Typhi and Paratyphi A motility. Serum from non-immunized or immunized mice was mixed 1:400 with PBS and was spreaded over the soft agar (0.3% agar) plates. Plates were dried and the plates were punctured at the center either with one colony of *S. Typhi* or with one colony of *S. Paratyphi A* and kept at 37°C for 24 hours. **A.** The spread of *S. Typhi* and **B.** *S. Paratyphi A* was **C.** Significantly reduced in case of serum collected from immunized mice **D.** Bacteria treated with non-immunized or immunized serum were loaded on top of the 1 ml mucin column and allowed to penetrate. Immunized serum agglutinated bacteria showed reduced ability to penetrate mucin.

<https://doi.org/10.1371/journal.pone.0203631.g007>

A together. Moreover, no licensed vaccine is available for paratyphoid fever. One of the major bottlenecks for the development of such vaccine is lack in the identification of protective antigens. Recent study showed that secreted or surface-associated antigens of *Salmonella* can induce strong protective humoral and cell mediated immune response [42]. Surface associated antigens are more protective than internal antigen because of physical association with PAMPs such as lipopolysaccharide that can activate both innate and adaptive immunity.

Table 3. Opsonization activity of immunized and non-immunized sera.

Bacteria	Treated with	Mean CFU x 10 ⁵ / well		Source or reference
		Incubation condition		
		0 minute	60 minutes	
S. Typhi C-6.946	Immunized serum	2.3±0.3	9.3±0.7**	This study
	Non-immunized serum	2.1±0.5	50.5±0.1	
S.Paratyphi A BCR 148	Immunized serum	2.5±0.2	10.4±0.8**	This study
	Non-immunized serum	2.6±0.4	53.6±0.7	

Values are means ± SD of triplicate samples.

**p < 0.005 (highly significant) when compared with the respective result of non-immune sera.

<https://doi.org/10.1371/journal.pone.0203631.t003>

Recent studies demonstrated that OMVs of gram-negative bacteria are one of the promising candidate vaccines [43, 44, 45, 46, 47, 48]. The composition of OMVs reflects outer membrane structure of the bacteria. So, we have isolated the OMVs from *S. Typhi* and Paratyphi A and characterized them. We found that both the OMVs contained LPS, different outer membrane, inner membrane, cytosolic and virulence proteins. Our study indicates that, OMV-constituents bridge their potent immunogenic nature with protective immuneresponse against enteric fever. To develop a complete broad range of protective immune response against both *S. Typhi* and Paratyphi A, we have designed a bivalent OMV-based vaccine and measured protective immune response in mice model. After oral immunization of three doses of bivalent *Salmonella* OMVs immunogen, we found antigen specific antibody responses, namely, anti-LPS, anti-Vi polysaccharide, anti-OMPs, anti-WCL. This result indicated that our formulation was immunogenic in nature. Furthermore, our data also indicates that OMVs are more immunogenic than heat-killed immunogen generating higher response for the production of antigen specific antibodies. Our results have also suggested that OMVs have an ability to induce humoral as well as cell mediated immune response. We found that after oral immunization, the populations of CD4 T and CD8 T cells in spleen were significantly increased. That data indicates that our immunogen activates T cell-mediated immune response. From this study, we can conclude that our immunogen significantly induce adaptive immune response; both humoral and cell mediated immune responses which are very crucial for generating long term protective immune response. The notion that, generation of both humoral and cellular arms of the immune system is necessary for the generation of long-term immune response was supported by previous studies as well [49, 50, 51]. LPS and Vi-polysaccharide are crucial antigenic components of typhoidal vaccine [52, 53]. Both LPS and Vi-polysaccharides are T-independent antigens [54]. Vi-polysaccharide typhoidal vaccine generates Vi-polysaccharide specific IgG by T-independent manner. For this reason, Vi-polysaccharide based vaccine was unable to generate significant long term protection (only 55% of the population was protected) [55]. Further studies showed that conjugated Vi-polysaccharide vaccine is more effective to generate long term protection than the native one [56, 57]. Vi-polysaccharide was conjugated with tetanus toxoid which induces significant T-cell depended immune response [56, 57]. Recent study showed that different outer membrane proteins, such as, OmpF, OmpC, OmpS1 and OmpS2 of *S. Typhi* are immunogenic and acts like adjuvant, they also induce T-dependent immune response [58]. Our proteomics data and immunoblot result showed that OMVs contained several outer membrane proteins and they are immunogenic. This data indicates that proteins of OMVs act as an adjuvant which can significantly induce long term Vi-polysaccharide and LPS specific antibodies in a T-dependend manner.

On the other perspective, cell-mediated immune responses are necessary to prevent intracellular *Salmonella* infection and spreading [59]. In our study, we found our bivalent immunogen to be significantly producing Th1 and Th17 polarizing cytokine which indicate activation of innate and cell mediated immune response [60, 61, 62]. Our result showed that our immunogen significantly induces Th1 and Th17 mediated immune response; generating significant amount of IFN- γ and IL-17. BMDCs-splenic CD4 T cell co-culture could actually mimic the condition of antigen presentation and up-regulation of different arms of the immune system. Elevation of IFN- γ and IL-12 indicates that the immune response may activate both CTL and Th1-response. IL-6 has a reputation of bridging the gaps between innate and adaptive immune response as well [63]. Up-regulation of CD4, CD8a and CD19⁺ cells indicate the activation of both B- and T-cells of the immune system [64]. Th1 cell mediated immune response is very crucial for *Salmonella* specific protective immune response [65]. A study showed that less IFN- γ producing mice are more susceptible to *Salmonella* Typhimurium infections compared with wild-type mice [66]. IFN- γ has a distinct role to activate

macrophage for the clearance of invasive bacteria [67, 68]. Furthermore, IL-17-producing Th17 cells are necessary for vaccine-induced protection against bacterial infection by enhancing neutrophil recruitment to infection sites and direct bacterial killing property [69]. Both IL-17 and IL-22 are produced in the intestinal mucosa early after oral *Salmonella* infection [70]. After *Salmonella* infection, IL-17 deficient mice demonstrate a modest increase in bacterial dissemination, suggesting that IL-17 contributes to the maintenance of the mucosal barrier [71]. Indeed, depletion of intestinal CD4⁺ T cells that accompanies simian immunodeficiency virus infection selectively blunted the intestinal IL-17 response in rhesus macaques, allowing increased translocation of *Salmonella* to the mesenteric lymph nodes and spleen [72]. Thus, although Th1 cells are critical for bacterial clearance in systemic tissues, Th17 cells most likely play an important additional protective role in preventing bacterial dissemination from the intestine.

In the protective study, we have challenged the immunized and non-immunized mice intraperitoneally with lethal dose of lethal wild type *Salmonella* Typhi and Paratyphi A strains. This mice model is widely used and most acceptable mice model from others like iron overload model due to the reproducibility and easy for the vaccine study for Typhi infection (32). We found almost 80–90% survival rate in immunized group and the bacterial burden in different organs of immunized group were significantly less in compare in immunized group in compare with non-immunized group after challenge. We can conclude that our formulated immunogen can provide broader range of protection against typhoidal fever.

Furthermore, we have checked the effect of both humoral and cell mediated immune response on protective efficacy by adoptive transfer of serum and splenocytes [73, 74]. This finding suggested that both humoral and cell mediated immune responses are crucial to induce protection against typhoidal *Salmonella* infection. Different serum transfer studies suggested that *Salmonella* specific antibodies are essential to complement fixation or opsonization of free bacteria [75]. Recent study showed that B cell-deficient mice did not produce Th1 and protective immune response after oral challenge with wild type *S. Typhimurium* strains and protective immune response cannot be restored by adoptive transfer of *Salmonella* specific antibodies [76]. Previous study also showed that B cells function as antigen presenting cells and an important source of inflammatory cytokines during *Salmonella* infection [77, 78]. So, both B and T cells are essential for *Salmonella*-specific immunity. Furthermore, much less colonization in the liver of immunized animals could be a result of neutrophils playing their part in providing protection [79]. In future, we will focus on which immune responses (B or T cells) is essential for clearance of diseases burden using different gene knock-out mice for direct evidence.

Here, we have further checked the mode of action of OMV specific antibody on *S. Typhi* and Paratyphi A. We found that OMV specific sera can agglutinate both *S. Typhi* and Paratyphi A which indicates the activation of complement mediated killing [80]. Agglutination was found to be occurring even after heat inactivation of complement in the sera which then helped in the inhibition of motility. Our result showed that OMV specific antibody significantly inhibits motility of *S. Typhi* and Paratyphi A. Bacterial motility is very crucial for penetrating the mucin layer, attachment and invading the intestinal epithelial cells [81]. Recent studies showed that *V. cholerae* OMV specific antibody significantly reduce adherence by inhibiting *V. cholerae* motility [82]. So, our data indicate that our immunogen also induced protective immune response by blocking initial bacterial entry via intestinal epithelial cells. Moreover, we found that typhoidal *Salmonella* OMV specific antibody enhance the macrophage mediated opsonization for killing the invasive strain. Overall our data suggest that our immunogen significantly induce first line defense of immune system to block and for clearance of typhoidal *Salmonella* infection.

Conclusions

S. Typhi and *S. Paratyphi A* naturally secrete OMVs during their growth cycle. These OMVs are rich in outer-, inner-membrane associated and cytosolic proteins as well as LPS. 1:1 mixture of these typhoidal *Salmonella* OMVs is immunogenic in nature. Up-regulation of different cytokines and surface marker expression proves the elevation of both humoral and cellular arms of the immune response in mice model. These two arms of the immune response play together in providing protection in adult intra-peritoneal mice model. This bivalent formulation can be used in future in phase-I trial.

Supporting information

S1 File. Characterization of the strains used based on PCR and serology. All strains were characterized by both serotyping and PCR-based methods. Specific primers and anti O- and H-antigens were used for this purpose.

(TIF)

S2 File. Characterization of the strains used based on their antibiotic susceptibility. Antibiotic susceptibility pattern was tested by Kirby-Bauer disc diffusion assay.

(TIF)

S3 File. Schematic of immunization and challenge regimen. Mice were immunized by oral gavage on day 0 and then two subsequent booster doses follow as stated. Mice were then challenged on day 35 via intra-peritoneal infection model. Blood were drawn as shown by the dotted arrows.

(TIF)

S4 File. MALDI-TOF/TOF spectrum of outer membrane vesicles (OMVs) isolated from *Salmonella Typhi C-6953*.

(TIF)

S5 File. MALDI-TOF/TOF spectrum of outer membrane vesicles (OMVs) isolated from *Salmonella Paratyphi A C-6915*.

(TIF)

S6 File. Hypothetical proteins present in *S. Typhi* OMVs.

(TIF)

S7 File. Hypothetical proteins present in *S. Typhi* OMVs.

(TIF)

S8 File. Hypothetical proteins present in *S. Typhi* OMVs.

(TIF)

S9 File. Hypothetical proteins present in *S. Typhi* OMVs.

(TIF)

S10 File. Hypothetical proteins present in *S. Paratyphi A* OMVs.

(TIF)

S11 File. Hypothetical proteins present in *S. Paratyphi A* OMVs.

(TIF)

S12 File. Dot blot and TCA precipitation analysis. A. Dot blot analysis against extracted LPS from two typhoidal strains. Lane 1: *S. Typhi* native LPS, Lane 2: *S. Paratyphi A* native LPS. Here, 1, 2, and 3 denotes three different concentrations of LPSs against which the dot blot

analysis was performed. B.TCA precipitation of culture supernatant. Lane 1: *S. Typhi* culture supernatant, Lane 2: *S. Paratyphi A* culture supernatant.

(TIF)

S13 File. FACS analysis was carried out after extracting the whole spleen. 50,000 events in total population were taken in each and every case and the mean value of area under PE in P2 population was taken into account whilst calculating the result. **i.** Unstained cells, **ii., iii., iv.** Up-regulation of CD4, CD8a and CD19, respectively in immunized and control mice's spleen. **v.** REA-cloned Iso-Type Control (ITC) for all three markers.

(TIF)

S14 File. Determination of LD50 value for challenge strains. 6 mice were per group were challenged with different concentrations of bacteria. Mice were observed for 7 days. The effective dose for LD50 or 50% mortality rate was found to be 2×10^7 CFU/ml for both the challenge strains.

(TIF)

S15 File. Comparative data of colonization between non-immunized and monovalent OMV-immunized adult mice, after challenging with wild type strains. A., B. Colonization in spleen and liver in *S. Typhi* OMV-immunized mice were less when they were challenged with *S. Typhi*. **C. D.** Colonization in spleen and liver in *S. Paratyphi A* OMV-immunized mice were less when they were challenged with *S. Paratyphi A*. In both cases, monovalent OMV immunization could not be able to hinder the infection from a heterologous strain.

(TIF)

S16 File. Comparative data of change in body weight between non-immunized and immunized adult mice, after challenging with two wild type strains. A., B. A drastic change in body weight was seen in non-immunized mice challenged with $>LD50$ dose of infection. **C. D.** A lower level of change in body weight was seen in mice challenged with sub-lethal dose of infection.

(TIF)

S17 File. Comparative data of bacterial load in small intestine. Three mice per group were challenged either sub-lethal dose or with greater than LD50 dose. Bacterial colonization in the small intestine was estimated since 3DPI until 5DPI. Higher colonization was observed in mice group challenged with greater than LD50 dose.

(TIF)

S18 File. Comparative data of passive protective efficacies on 0th day challenge following adoptive transfer. Both B- and T-cell mediated immune response induced by OMVs is necessary for the protective immunity to bacterial infection. Splenocytes (1×10^6) and serum (100 μ l) were injected via the tail vein. One group of mice was challenged with 2×10^7 CFU/ml of heterologous strains of bacteria after two hours of the adoptive transfer and kept for three days. **A., B.** Systemic infection of *S. Typhi* in spleen and liver was observed in the early group 3 days post infection. Similarly, **C. D.** Systemic infection of *S. Paratyphi A* in spleen and liver was observed 3 days post infection.

(TIF)

S19 File. Comparative data of passive protective efficacies on 7th day challenge following adoptive transfer. This group was challenged with the same dose as mentioned above after seven days of the adoptive transfer. **A., B.** Systemic infection of *S. Typhi* in spleen and liver was observed 3 days post infection. Similarly, **C., D.** Systemic infection of *S. Paratyphi A* in

spleen and liver was observed 3 days post infection.
(TIF)

Acknowledgments

We are grateful to Ms. Rhishita Chourashi, Mr. Sandip Chakraborty, Mr. Subrata Singha for their technical and meaningful help.

Author Contributions

Conceptualization: Debaki R. Howlader, Hemanta Koley, Shanta Dutta.

Data curation: Debaki R. Howlader, Hemanta Koley, Ritam Sinha, Suhrid Maiti.

Formal analysis: Debaki R. Howlader, Hemanta Koley.

Funding acquisition: Hemanta Koley.

Investigation: Debaki R. Howlader, Hemanta Koley.

Methodology: Debaki R. Howlader, Hemanta Koley, Ritam Sinha, Suhrid Maiti, Ushasi Bhau-mik, Priyadarshini Mukherjee.

Project administration: Hemanta Koley.

Resources: Hemanta Koley.

Supervision: Hemanta Koley.

Validation: Hemanta Koley.

Writing – original draft: Debaki R. Howlader, Hemanta Koley, Ritam Sinha.

Writing – review & editing: Hemanta Koley, Shanta Dutta.

References

1. Crump JA, Mintz ED. Global trends in typhoid and paratyphoid Fever. *Clin Infect Dis*. 2010 Jan 15; 50(2):241–6. <https://doi.org/10.1086/649541> Review. PMID: 20014951
2. John J, Van Aart CJ, Grassly NC. The Burden of Typhoid and Paratyphoid in India: Systematic Review and Meta-analysis. *PLoS Negl Trop Dis*. 2016 Apr 15; 10(4):e0004616. <https://doi.org/10.1371/journal.pntd.0004616> eCollection 2016 Apr. Review
3. Teh CS, Chua KH, Thong KL. Paratyphoid fever: splicing the global analyses. *Int J Med Sci*. 2014 May 14; 11(7):732–41. <https://doi.org/10.7150/ijms.7768> eCollection 2014. Review. PMID: 24904229
4. Kaur J, Jain SK. Role of antigens and virulence factors of *Salmonella entericaserovar* Typhi in its pathogenesis. *Microbiol Res*. 2012 Apr 20; 167(4):199–210. <https://doi.org/10.1016/j.micres.2011.08.001> Epub 2011 Sep 25. Review. PMID: 21945101.
5. Marathe SA, Lahiri A, Negi VD, Chakravorty D. Typhoid fever & vaccine development: a partially answered question. *Indian J Med Res*. 2012; 135:161–9. Review. PMID: 22446857
6. Chatterjee D, Chaudhuri K. *Vibrio cholerae* O395 outer membrane vesicles modulate intestinal epithelial cells in a NOD1 protein-dependent manner and induce dendritic cell-mediated Th2/Th17 cell responses. *J Biol Chem*. 2013 Feb 8; 288(6):4299–309. <https://doi.org/10.1074/jbc.M112.408302> Epub 2012 Dec 28. PMID: 23275338
7. Schild S, Nelson EJ, Camilli A. Immunization with *Vibrio cholerae* outer membrane vesicles induces protective immunity in mice. *Infect Immun*. 2008 Oct; 76(10):4554–63. <https://doi.org/10.1128/IAI.00532-08> Epub 2008 Aug 4. PMID: 18678672
8. Schild S, Nelson EJ, Bishop AL, Camilli A. Characterization of *Vibrio cholerae* outer membrane vesicles as a candidate vaccine for cholera. *Infect Immun*. 2009 Jan; 77(1):472–84. <https://doi.org/10.1128/IAI.01139-08> Epub 2008 Nov 10. PMID: 19001078
9. Bishop AL, Tarique AA, Patimalla B, Calderwood SB, Qadri F, Camilli A. Immunization of mice with *vibrio cholerae* outer-membrane vesicles protects against hyperinfectious challenge and blocks

- transmission. *J Infect Dis.* 2012 Feb 1; 205(3):412–21. <https://doi.org/10.1093/infdis/jir756> Epub 2011 Dec 5. PMID: 22147790
10. Bishop AL, Schild S, Patimalla B, Klein B, Camilli A. Mucosal immunization with *Vibrio cholerae* outer membrane vesicles provides maternal protection mediated by antilipopolysaccharide antibodies that inhibit bacterial motility. *Infect Immun.* 2010 Oct; 78(10):4402–20. <https://doi.org/10.1128/IAI.00398-10> Epub 2010 Aug 2. PMID: 20679439
 11. Roier S, Fenninger JC, Leitner DR, Rechberger GN, Reidl J, Schild S. Immunogenicity of *Pasteurella multocida* and *Mannheimia haemolytica* outer membrane vesicles. *Int J Med Microbiol.* 2013 Jul; 303(5):247–56. <https://doi.org/10.1016/j.ijmm.2013.05.001> Epub 2013 May 10. PMID: 23731905
 12. Oster P, Lennon D, O'Hallahan J, Mulholland K, Reid S, Martin D. MeNZB: a safe and highly immunogenic tailor-made vaccine against the New Zealand *Neisseria meningitidis* serogroup B disease epidemic strain. *Vaccine.* 2005 Mar 18; 23(17–18):2191–6. <https://doi.org/10.1016/j.vaccine.2005.01.063> PMID: 15755593.
 13. Holst J, Oster P, Arnold R, Tatley MV, Næss LM, Aaberge IS, Galloway Y, McNicholas A, O'Hallahan J, Rosenqvist E, Black S. Vaccines against meningococcal serogroup B disease containing outer membrane vesicles (OMV): lessons from past programs and implications for the future. *Hum Vaccin Immunother.* 2013 Jun; 9(6):1241–53. <https://doi.org/10.4161/hv.24129> Epub 2013 Mar 7. Review. PMID: 23857274
 14. Roy N, Barman S, Ghosh A, Pal A, Chakraborty K, Das SS, Saha DR, Yamasaki S, Koley H. Immunogenicity and protective efficacy of *Vibrio cholerae* outer membrane vesicles in rabbit model. *FEMS Immunol Med Microbiol.* 2010 Oct; 60(1):18–27. <https://doi.org/10.1111/j.1574-695X.2010.00692.x> PMID: 20528929.
 15. Sinha R, Koley H, Nag D, Mitra S, Mukhopadhyay AK, Chattopadhyay B. Pentavalent outer membrane vesicles of *Vibrio cholerae* induce adaptive immune response and protective efficacy in both adult and passive suckling mice models. *Microbes Infect.* 2015 Mar; 17(3):215–27. <https://doi.org/10.1016/j.micinf.2014.10.011> Epub 2014 Nov 15. PMID: 25461799.
 16. Mitra S, Barman S, Nag D, Sinha R, Saha DR, Koley H. Outer membrane vesicles of *Shigella boydii* type 4 induce passive immunity in neonatal mice. *FEMS Immunol Med Microbiol.* 2012 Nov; 66(2):240–50. <https://doi.org/10.1111/j.1574-695X.2012.01004.x> Epub 2012 Aug 1. PMID: 22762732.
 17. Mitra S, Chakrabarti MK, Koley H. Multi-serotype outer membrane vesicles of *Shigella* confer passive protection to the neonatal mice against shigellosis. *Vaccine.* 2013 Jun 28; 31(31):3163–73. <https://doi.org/10.1016/j.vaccine.2013.05.001> Epub 2013 May 15. PMID: 23684822.
 18. Hirose K, Itoh K, Nakajima H, Kurazono T, Yamaguchi M, Moriya K, Ezaki T, Kawamura Y, Tamura K, Watanabe H. Selective amplification of *tyv* (*rfbE*), *prt*(*rfbS*), *viaB*, and *fliC* genes by multiplex PCR for identification of *Salmonella enterica* serovars *Typhi* and *Paratyphi A*. *J Clin Microbiol.* 2002 Feb; 40(2):633–6. <https://doi.org/10.1128/JCM.40.2.633-636.2002> PMID: 11825983
 19. Patrick A.D. Grimont & François-Xavier Weill. Antigenic formulae of the *Salmonella* serovars. WHO Collaborating Centre for Reference and Research on *Salmonella*. 2007 9th Edition.
 20. Kauffmann F. *Salmonella*. In: Kauffmann F, editor. *The bacteriology of Enterobacteriaceae*. Collected studies of the author and his co-workers. Copenhagen: Munksgard; 1966. p. 53–304.
 21. Srinivasan VB, Singh BB, Priyadarshi N, Chauhan NK, Rajamohan G. Role of novel multidrug efflux pump involved in drug resistance in *Klebsiella pneumoniae*. *PLoS One.* 2014 May 13; 9(5):e96288. <https://doi.org/10.1371/journal.pone.0096288> eCollection 2014. PMID: 24823362
 22. External Quality Control System (EQAS). Global Foodborne Infections Network (GFN). World Health Organization (WHO), 2017.
 23. Jaiswal A, Sarkar S, Das P, Nandy S, Koley H, Sarkar B. Trends in the genomic epidemiology of *Vibrio cholerae* O1 isolated worldwide since 1961. *Int J Antimicrob Agents.* 2015 Oct; 46(4):460–4. <https://doi.org/10.1016/j.ijantimicag.2015.06.012> Epub 2015 Jul 22. PMID: 26255896.
 24. DuBois M., Gilles K.A., Hamilton J.K., Rebers P.A., Smith F. Colorimetric method for determination of sugars and related substances. *Anal. Chem.* 1956 28 (3), 350–356.
 25. Khatua B, Van Vleet J, Choudhury BP, Chaudhry R, Mandal C. Sialylation of outer membrane porin protein D: a mechanistic basis of antibiotic uptake in *Pseudomonas aeruginosa*. *Mol Cell Proteomics.* 2014 Jun; 13(6):1412–28. <https://doi.org/10.1074/mcp.M113.030999> Epub 2014 Mar 18. PMID: 24643970
 26. Hobb RI, Fields JA, Burns CM, Thompson SA. Evaluation of procedures for outer membrane isolation from *Campylobacter jejuni*. *Microbiology.* 2009 Mar; 155(Pt3):979–88. <https://doi.org/10.1099/mic.0.024539-0> PMID: 19246768
 27. Mukherjee P, Raychaudhuri S, Nag D, Sinha R, Howlader DR, Mukhopadhyay AK, Koley H. Evaluation of immunogenicity and protective efficacy of combination heat-killed immunogens from three enteroinvasive bacteria in rabbit model. *Immunobiology.* 2016 Aug; 221(8):918–26. <https://doi.org/10.1016/j.imbio.2016.03.002> Epub 2016 Mar 18. PMID: 27039316.

28. Hwang BJ, Chu G. Trichloroacetic acid precipitation by ultracentrifugation to concentrate dilute protein in viscous solution. *Biotechniques*. 1996 Jun; 20(6):982–4. PMID: [8780868](#).
29. Keren DF. Enzyme-linked immunosorbent assay for immunoglobulin G and immunoglobulin A antibodies to *Shigella flexneri* antigens. *Infect Immun*. 1979 May; 24(2):441–8. PMID: [378853](#)
30. Rodríguez T, Pérez O, Ménager N, Ugrinovic S, Bracho G, Mastroeni P. Interactions of proteoliposomes from serogroup B *Neisseria meningitidis* with bone marrow-derived dendritic cells and macrophages: adjuvant effects and antigen delivery. *Vaccine*. 2005 Jan 26; 23(10):1312–21. <https://doi.org/10.1016/j.vaccine.2004.07.049> PMID: [15652674](#).
31. Bhattacharya P, Gopisetty A, Ganesh BB, Sheng JR, Prabhakar BS. GM-CSF-induced, bone-marrow-derived dendritic cells can expand natural Tregs and induce adaptive Tregs by different mechanisms. *J Leukoc Biol*. 2011 Feb; 89(2):235–49. <https://doi.org/10.1189/jlb.0310154> Epub 2010 Nov 2. PMID: [21048215](#)
32. Paliwal PK, Bansal A, Sagi SS, Sairam M. Intraperitoneal immunization of recombinant HSP70 (DnaK) of *Salmonella Typhi* induces a predominant Th2 response and protective immunity in mice against lethal *Salmonella* infection. *Vaccine*. 2011 Sep 2; 29(38):6532–9. <https://doi.org/10.1016/j.vaccine.2011.07.005> Epub 2011 Jul 19. PMID: [21767594](#).
33. Turnbull L, Whitchurch CB. Motility assay: twitching motility. *Methods Mol Biol*. 2014; 1149:73–86. https://doi.org/10.1007/978-1-4939-0473-0_9 PMID: [24818899](#).
34. Liu Z, Wang Y, Liu S, Sheng Y, Rueggeberg KG, Wang H, Li J, Gu FX, Zhong Z, Kan B, Zhu J. *Vibrio cholerae* represses polysaccharide synthesis to promote motility in mucosa. *Infect Immun*. 2015 Mar; 83(3):1114–21. <https://doi.org/10.1128/IAI.02841-14> Epub 2015 Jan 5. PMID: [25561707](#)
35. Iankov ID, Petrov DP, Mladenov IV, Haralambieva IH, Kalev OK, Balabanova MS, Mitov IG. Protective efficacy of IgA monoclonal antibodies to O and H antigens in a mouse model of intranasal challenge with *Salmonella enterica* serotype Enteritidis. *Microbes Infect*. 2004 Aug; 6(10):901–10. <https://doi.org/10.1016/j.micinf.2004.05.007> PMID: [15310466](#).
36. Frankel G, Newton SM, Schoolnik GK, Stocker BA. Intragenic recombination in a flagellin gene: characterization of the H1-j gene of *Salmonella typhi*. *EMBO J*. 1989 Oct; 8(10):3149–52. PMID: [2583095](#)
37. Joys TM. The covalent structure of the phase-1 flagellar filament protein of *Salmonella typhimurium* and its comparison with other flagellins. *J Biol Chem*. 1985 Dec 15; 260(29):15758–61. PMID: [2999134](#).
38. Kuwajima G. Flagellin domain that affects H antigenicity of *Escherichia coli* K-12. *J Bacteriol*. 1988 Jan; 170(1):485–8. PMID: [3275631](#)
39. Sidhu VK, Vorhölter FJ, Niehaus K, Watt SA. Analysis of outer membrane vesicle associated proteins isolated from the plant pathogenic bacterium *Xanthomonas campestris* sp. *campestris*. *BMC Microbiol*. 2008 Jun 2; 8:87. <https://doi.org/10.1186/1471-2180-8-87> PMID: [18518965](#)
40. Elhenawy W, Bording-Jorgensen M, Valguarnera E, Haurat MF, Wine E, Feldman MF. LPS Remodeling Triggers Formation of Outer Membrane Vesicles in *Salmonella*. *MBio*. 2016 Jul 12; 7(4). <https://doi.org/10.1128/mBio.00940-16> PMID: [27406567](#)
41. Ahmadi H, Tabaraie B, Maleknia S, Shapouri R, Nejati M, Pour Mirza Gholi F, Hedayati M, Sadati M, Zahednia S, SharifatSalmani A. Immunological evaluation of Vi capsular polysaccharide of *Salmonella enterica* subsp. *Typhi* vaccine by serum bactericidal assay. *J Med Microbiol*. 2013 Feb; 62(Pt 2):283–6. <https://doi.org/10.1099/jmm.0.047159-0> Epub 2012 Oct 25. PMID: [23105026](#).
42. Barat S, Willer Y, Rizos K, Claudi B, Mazé A, Schemmer AK, Kirchhoff D, Schmidt A, Burton N, Bumann D. Immunity to intracellular *Salmonella* depends on surface-associated antigens. *PLoS Pathog*. 2012; 8(10):e1002966. <https://doi.org/10.1371/journal.ppat.1002966> Epub 2012 Oct 18. PMID: [23093937](#)
43. van der Pol L, Stork M, van der Ley P. Outer membrane vesicles as platform vaccine technology. *Bio-technol J*. 2015 Sep; 10(11):1689–706. <https://doi.org/10.1002/biot.201400395> Review. PMID: [26912077](#)
44. Collins BS. Gram-negative outer membrane vesicles in vaccine development. *Discov Med*. 2011 Jul; 12(62):7–15. Review. PMID: [21794204](#).
45. Chen DJ, Osterrieder N, Metzger SM, Buckles E, Doody AM, DeLisa MP, Putnam D. Delivery of foreign antigens by engineered outer membrane vesicle vaccines. *Proc Natl AcadSci U S A*. 2010 Feb 16; 107(7):3099–104. <https://doi.org/10.1073/pnas.0805532107> Epub 2010 Jan 27. PMID: [20133740](#)
46. Olsen I, Amano A. Outer membrane vesicles—offensive weapons or good Samaritans? *J Oral Microbiol*. 2015 Apr 1; 7:27468. <https://doi.org/10.3402/jom.v7.27468> eCollection 2015. PMID: [25840612](#)
47. Park SB, Jang HB, Nho SW, Cha IS, Hikima J, Ohtani M, Aoki T, Jung TS. Outer membrane vesicles as a candidate vaccine against edwardsiellosis. *PLoS One*. 2011 Mar 8; 6(3):e17629. <https://doi.org/10.1371/journal.pone.0017629> PMID: [21408115](#)

48. Gerritzen MJH, Martens DE, Wijffels RH, van der Pol L, Stork M. Bioengineering bacterial outer membrane vesicles as vaccine platform. *Biotechnol Adv.* 2017 Sep; 35(5):565–574. <https://doi.org/10.1016/j.biotechadv.2017.05.003> Epub 2017 May 15. Review. PMID: 28522212.
49. Amanna IJ, Slifka MK. Contributions of humoral and cellular immunity to vaccine-induced protection in humans. *Virology.* 2011 Mar 15; 411(2):206–15. <https://doi.org/10.1016/j.virol.2010.12.016> Epub 2011 Jan 8. Review. PMID: 21216425
50. Chaplin DD. Overview of the immune response. *J Allergy Clin Immunol.* 2010 Feb; 125(2 Suppl 2):S3–23. <https://doi.org/10.1016/j.jaci.2009.12.980> Review. PMID: 20176265
51. Lu CY, Ni YH, Chiang BL, Chen PJ, Chang MH, Chang LY, Su IJ, Kuo HS, Huang LM, Chen DS, Lee CY. Humoral and cellular immune responses to a hepatitis B vaccine booster 15–18 years after neonatal immunization. *J Infect Dis.* 2008 May 15; 197(10):1419–26. <https://doi.org/10.1086/587695> PMID: 18444799.
52. Mekara Y, Maneekarn N, Vithayasai V, Makonkawkeyoon S. Determination of antibody from typhoid patients against lipopolysaccharide and protein antigens of *Salmonella typhi*. *Asian Pac J Allergy Immunol.* 1990 Dec; 8(2):95–101. PMID: 2091664.
53. Ochiai RL, Khan MI, Soofi SB, Sur D, Kanungo S, You YA, Habib MA, Sahito SM, Manna B, Dutta S, Acosta CJ, Ali M, Bhattacharya SK, Bhutta ZA, Clemens JD. Immune responses to Vi capsular polysaccharide typhoid vaccine in children 2 to 16 years old in Karachi, Pakistan, and Kolkata, India. *Clin Vaccine Immunol.* 2014 May; 21(5):661–6. <https://doi.org/10.1128/CVI.00791-13> Epub 2014 Mar 5. PMID: 24599532
54. Marshall JL, Flores-Langarica A, Kingsley RA, Hitchcock JR, Ross EA, López-Macías C, Lakey J, Martin LB, Toellner KM, MacLennan CA, MacLennan IC, Henderson IR, Dougan G, Cunningham AF. The capsular polysaccharide Vi from *Salmonella typhi* is a B1b antigen. *J Immunol.* 2012 Dec 15; 189(12):5527–32. <https://doi.org/10.4049/jimmunol.1103166> Epub 2012 Nov 16. PMID: 23162127
55. Klugman KP, Koornhof HJ, Robbins JB, Le Cam NN. Immunogenicity, efficacy and serological correlate of protection of *Salmonella typhi* Vi capsular polysaccharide vaccine three years after immunization. *Vaccine.* 1996 Apr; 14(5):435–8. PMID: 8735556.
56. Mai NL, Phan VB, Vo AH, Tran CT, Lin FY, Bryla DA, Chu C, Schiloach J, Robbins JB, Schneerson R, Szu SC. Persistent efficacy of Vi conjugate vaccine against typhoid fever in young children. *N Engl J Med.* 2003 Oct 2; 349(14):1390–1. <https://doi.org/10.1056/NEJM200310023491423> PMID: 14523155.
57. Kossaczka Z, Lin FY, Ho VA, Thuy NT, Van Bay P, Thanh TC, Khiem HB, Trach DD, Karpas A, Hunt S, Bryla DA, Schneerson R, Robbins JB, Szu SC. Safety and immunogenicity of Vi conjugate vaccines for typhoid fever in adults, teenagers, and 2- to 4-year-old children in Vietnam. *Infect Immun.* 1999 Nov; 67(11):5806–10. PMID: 10531232
58. Moreno-Eutimio MA, Tenorio-Calvo A, Pastelin-Palacios R, Perez-Shibayama C, Gil-Cruz C, López-Santiago R, Baeza I, Fernández-Mora M, Bonifaz L, Isibasi A, Calva E, López-Macías C. *Salmonella Typhi* OmpS1 and OmpS2 porins are potent protective immunogens with adjuvant properties. *Immunology.* 2013 Aug; 139(4):459–71. <https://doi.org/10.1111/imm.12093> PMID: 23432484
59. Lo WF, Ong H, Metcalf ES, Soloski MJ. T cell responses to Gram-negative intracellular bacterial pathogens: a role for CD8+ T cells in immunity to *Salmonella* infection and the involvement of MHC class Ib molecules. *J Immunol.* 1999 May 1; 162(9):5398–406. PMID: 10228017.
60. Pennock ND, White JT, Cross EW, Cheney EE, Tamburini BA, Kedl RM. T cell responses: naive to memory and everything in between. *AdvPhysiol Educ.* 2013 Dec; 37(4):273–83. <https://doi.org/10.1152/advan.00066.2013> PMID: 24292902
61. Damsker JM, Hansen AM, Caspi RR. Th1 and Th17 cells: adversaries and collaborators. *Ann N Y Acad Sci.* 2010 Jan; 1183:211–21. <https://doi.org/10.1111/j.1749-6632.2009.05133.x> Review. PMID: 20146717
62. Holley MM, Kielian T. Th1 and Th17 cells regulate innate immune responses and bacterial clearance during central nervous system infection. *J Immunol.* 2012 Feb 1; 188(3):1360–70. <https://doi.org/10.4049/jimmunol.1101660> Epub 2011 Dec 21. PMID: 22190181
63. Pennock ND, White JT, Cross EW, Cheney EE, Tamburini BA, Kedl RM. T cell responses: naive to memory and everything in between. *AdvPhysiol Educ.* 2013 Dec; 37(4):273–83. <https://doi.org/10.1152/advan.00066.2013> PMID: 24292902
64. Ait-Oufella H, Sage AP, Mallat Z, Tedgui A. Adaptive (T and B cells) immunity and control by dendritic cells in atherosclerosis. *Circ Res.* 2014 May 9; 114(10):1640–60. <https://doi.org/10.1161/CIRCRESAHA.114.302761> Review. PMID: 24812352.
65. Mizuno Y, Takada H, Nomura A, Jin CH, Hattori H, Ihara K, Aoki T, Eguchi K, Hara T. Th1 and Th1-inducing cytokines in *Salmonella* infection. *ClinExpImmunol.* 2003 Jan; 131(1):111–7. <https://doi.org/10.1046/j.1365-2249.2003.02060.x> PMID: 12519393

66. Bao S, Beagley KW, France MP, Shen J, Husband AJ. Interferon-gamma plays a critical role in intestinal immunity against *Salmonella typhimurium* infection. *Immunology*. 2000 Mar; 99(3):464–72. <https://doi.org/10.1046/j.1365-2567.2000.00955.x> PMID: 10712678
67. Gordon MA, Jack DL, Dockrell DH, Lee ME, Read RC. Gamma interferon enhances internalization and early nonoxidative killing of *Salmonella entericaserovar Typhimurium* by human macrophages and modifies cytokine responses. *Infect Immun*. 2005 Jun; 73(6):3445–52. <https://doi.org/10.1128/IAI.73.6.3445-3452.2005> PMID: 15908373
68. Herbst S, Schaible UE, Schneider BE. Interferon gamma activated macrophages kill mycobacteria by nitric oxide induced apoptosis. *PLoS One*. 2011 May 2; 6(5):e19105. <https://doi.org/10.1371/journal.pone.0019105> PMID: 21559306
69. Khader SA, Gopal R. IL-17 in protective immunity to intracellular pathogens. *Virulence*. 2010 Sep-Oct; 1(5):423–7. <https://doi.org/10.4161/viru.1.5.12862> Review. PMID: 21178483
70. Siegemund S, Schütze N, Schulz S, Wolk K, Nasilowska K, Straubinger RK, Sabat R, Alber G. Differential IL-23 requirement for IL-22 and IL-17A production during innate immunity against *Salmonella entericaserovar* Enteritidis. *Int Immunol*. 2009 May; 21(5):555–69. <https://doi.org/10.1093/intimm/dxp025> Epub 2009 Mar 18. PMID: 19297659.
71. Blaschitz C, Raffatellu M. Th17 cytokines and the gut mucosal barrier. *J Clin Immunol*. 2010 Mar; 30(2):196–203. <https://doi.org/10.1007/s10875-010-9368-7> Epub 2010 Feb 2. Review. PMID: 20127275
72. Raffatellu M, Santos RL, Verhoeven DE, George MD, Wilson RP, Winter SE, Godinez I, Sankaran S, Paixao TA, Gordon MA, Kolls JK, Dandekar S, Bäuml AJ. Simian immunodeficiency virus-induced mucosal interleukin-17 deficiency promotes *Salmonella* dissemination from the gut. *Nat Med*. 2008 Apr; 14(4):421–8. <https://doi.org/10.1038/nm1743> Epub 2008 Mar 23. PMID: 18376406
73. Genovesi EV, Petty CL, Collins JJ. Use of adoptive transfer and Winn assay procedures in the further analysis of antiviral acquired immunity in mice protected against Friend leukemia virus-induced disease by passive serum therapy. *Cancer Res*. 1984 Apr; 44(4):1489–98. PMID: 6608407.
74. Kraaijeveld CA, Benaissa-Trouw BJ, Harmsen M, Snippe H. Adoptive transfer of immunity against virulent Semliki Forest virus with immune spleen cells from mice infected with avirulent Semliki Forest virus. *Arch Virol*. 1986; 91(1–2):83–92. PMID: 3489451.
75. Gondwe EN, Molyneux ME, Goodall M, Graham SM, Mastroeni P, Drayson MT, MacLennan CA. Importance of antibody and complement for oxidative burst and killing of invasive nontyphoidal *Salmonella* by blood cells in Africans. *Proc Natl AcadSci U S A*. 2010 Feb 16; 107(7):3070–5. <https://doi.org/10.1073/pnas.0910497107> Epub 2010 Jan 28. PMID: 20133627
76. Nanton MR, Way SS, Shlomchik MJ, McSorley SJ. Cutting edge: B cells are essential for protective immunity against *Salmonella* independent of antibody secretion. *J Immunol*. 2012 Dec 15; 189(12):5503–7. <https://doi.org/10.4049/jimmunol.1201413> Epub 2012 Nov 12. PMID: 23150714
77. Shen P, Fillatreau S. Suppressive functions of B cells in infectious diseases. *Int Immunol*. 2015 Oct; 27(10):513–9. <https://doi.org/10.1093/intimm/dxv037> Epub 2015 Jun 10. Review. PMID: 26066008.
78. Barr TA, Brown S, Mastroeni P, Gray D. TLR and B cell receptor signals to B cells differentially program primary and memory Th1 responses to *Salmonella enterica*. *J Immunol*. 2010 Sep 1; 185(5):2783–9. <https://doi.org/10.4049/jimmunol.1001431> Epub 2010 Jul 30. PMID: 20675594
79. Conlan JW. Neutrophils prevent extracellular colonization of the liver microvasculature by *Salmonella typhimurium*. *Infect Immun*. 1996 Mar; 64(3):1043–7. PMID: 8641757
80. McQuillen DP, Gulati S, Rice PA. Complement-mediated bacterial killing assays. *Methods Enzymol*. 1994; 236:137–47. PMID: 7968606.
81. Liu Z, Miyashiro T, Tsou A, Hsiao A, Goulian M, Zhu J. Mucosal penetration primes *Vibrio cholerae* for host colonization by repressing quorum sensing. *Proc Natl AcadSci U S A*. 2008 Jul 15; 105(28):9769–74. <https://doi.org/10.1073/pnas.0802241105> Epub 2008 Jul 7. PMID: 18606988
82. Chourashi R, Mondal M, Sinha R, Debnath A, Das S, Koley H, Chatterjee NS. Role of a sensor histidine kinase ChiS of *Vibrio cholerae* in pathogenesis. *Int J Med Microbiol*. 2016 Dec; 306(8):657–665. <https://doi.org/10.1016/j.ijmm.2016.09.003> Epub 2016 Sep 19. PMID: 27670078.