


## RESEARCH ARTICLE

# Co-sensitization and cross-reactivity of *Blomia tropicalis* with two *Dermatophagoides* species in Guangzhou, China

Xiaoqing Liu<sup>1,2</sup> | Peiyan Zheng<sup>1</sup> | Song Guo Zheng<sup>3</sup> | Yingying Zhai<sup>4</sup> | Xiaoming Zhao<sup>5</sup> | Yin Chen<sup>6</sup> | Chuanxu Cai<sup>1</sup> | Zehong Wu<sup>1</sup> | Zhifeng Huang<sup>1</sup> | Xiangwei Zou<sup>1</sup> | Chenxi Liao<sup>1</sup> | Baoqing Sun<sup>1</sup> 

<sup>1</sup>Department of Allergy and Clinical Immunology, Guangzhou Institute of Respiratory Health, State Key Laboratory of Respiratory Disease, National Clinical Research Center of Respiratory Disease, First Affiliated Hospital of Guangzhou Medical University, Guangzhou, China

<sup>2</sup>Department of Clinical Laboratory and Medical Research Center, Zhuhai Hospital of Jinan University, Zhuhai, China

<sup>3</sup>Department of Medicine at Penn State College of Medicine and Milton S. Hershey Medical Center, Hershey, Pennsylvania

<sup>4</sup>Department of Paediatrics, The First Affiliated Hospital of Guangzhou Medical University, Guangzhou, China

<sup>5</sup>Department of Otolaryngology Head and Neck Surgery, Zhuhai Hospital of Jinan University, Zhuhai, China

<sup>6</sup>Department of Pharmacology and Toxicology, College of Pharmacy, The University of Arizona, Tucson, AZ, USA

## Correspondence

Baoqing Sun, State Key Laboratory of Respiratory Disease, The First Affiliated Hospital of Guangzhou Medical University, 151 Yanjiangxi Road, Guangzhou 510120, Guangdong, China.  
Email: sunbaoqing@vip.163.com

## Funding information

Open Project of State Key Laboratory of Respiratory Disease, Grant/Award Number: SKLRD-OP-201803 and SKLRD-OP-201809; Science and Technology Innovation Committee Project of Guangzhou, Grant/Award Number: 201831802; Bureau of traditional Chinese Medicine Scientific Research Project of Guangdong, Grant/Award Number: 20192048; National Natural Science Foundation of China, Grant/Award Number: 81601394, 81802076 and 81871736

## Abstract

**Background:** Contradictory results have been reported previously in the analyses of cross-reactivity among *Blomia tropicalis* (Blo t), *Dermatophagoides pteronyssinus* (Der p), and *Dermatophagoides farinae* (Der f). This study aims to investigate the characteristics of co-sensitization and the IgE cross-reactivity among them and attempts to identify whether patients are sensitized to Blo t due to cross-reaction or true sensitization.

**Methods:** Specific IgE (sIgE) in the sera from 1497 allergenic patients was determined by ImmunoCAP. Cross-reactivity was analyzed and determined by sIgE inhibition with 21 sera samples.

**Results:** Around 85.50% of patients were sensitized to Der p, 85.37% of patients were sensitized to Der f, and 71.54% of patients were sensitized to Blo t. Further, 70.14% of patients were co-sensitized to Blo t, Der p, and Der f, and only seven patients were sensitized solely to Blo t. With increasing sIgE levels for Blo t, the positive rates of severe-level (class 5-6) co-sensitization to Der p or Der f significantly increased. Blo t was moderately associated with Der p and Der f, with correlation coefficients of 0.6998 and 0.6782, respectively. Der p and Der f inhibited IgE binding to Blo t more strongly than Blo t inhibited IgE binding to Der p or Der f in the patient groups  $C_{\text{Blo t}} < C_{\text{Der p}}$  and  $C_{\text{Blo t}} < C_{\text{Der f}}$ .

**Conclusions:** This study has established valuable information about the co-sensitization and cross-reactivity of Blo t with two *Dermatophagoides* species (Der p and

Xiaoqing Liu and Peiyan Zheng contributed equally to the study.

This is an open access article under the terms of the Creative Commons Attribution-NonCommercial-NoDerivs License, which permits use and distribution in any medium, provided the original work is properly cited, the use is non-commercial and no modifications or adaptations are made.

© 2019 The Authors. *Journal of Clinical Laboratory Analysis* Published by Wiley Periodicals, Inc.

Der f) and helps to provide adequate diagnosis and treatment of the mite-allergic patients.

#### KEYWORDS

*Blomia tropicalis*, cross-reactivity, sIgE inhibition

## 1 | INTRODUCTION

Mites are a prevalent and important source of allergenic proteins that are associated with allergic respiratory diseases, such as asthma and rhinitis. *Dermatophagoides pteronyssinus* (Der p) and *Dermatophagoides farinae* (Der f) are the predominant mite species worldwide. Yet, *Blomia tropicalis* (Blo t) is an important mite allergen in tropical regions like Singapore, Malaysia, Columbia, and the Taiwan and Hainan provinces of China.<sup>1-5</sup> Blo t coexists with Der p and Der f, and Blo t-sensitized patients are usually co-sensitized to Der p and Der f, with reports of more than 30% of patients sensitized to all three species.<sup>6</sup> Some studies have reported a moderate correlation between Der p and Blo t through analysis of the levels of specific IgE (sIgE).<sup>6-8</sup> However, partial IgE inhibition assays have shown that Blo t allergens have little cross-reactivity with Der p and Der f.<sup>9-11</sup> At present, studies about cross-reactivity between Blo t and Der p and Blo t and Der f are few and appear to be inconsistent. Whether patients co-sensitized to Blo t and the other two mites are due to true sensitization or cross-reaction is still unknown.

Guangzhou, a capital city of Guangdong province, located in Southern China in subtropical monsoon climate region that is suitable for proliferation of dust mites, storage mites, and fungi due to its warm and humid conditions. Though lower levels of Blo t antigens

were found in bedding dust samples and living room samples from Guangzhou city,<sup>12</sup> it was found that there was a high positive rate (88.2%) of Blo t in asthma patients with or without rhinitis.<sup>13</sup> In our study, we investigate the co-sensitization and correlation of Blo t, Der p, and Der f using sIgE measurements. sIgE inhibition was used to evaluate the IgE cross-reactivity among these mites, attempting to identify whether sensitization to Blo t was due to cross-reaction or true sensitization.

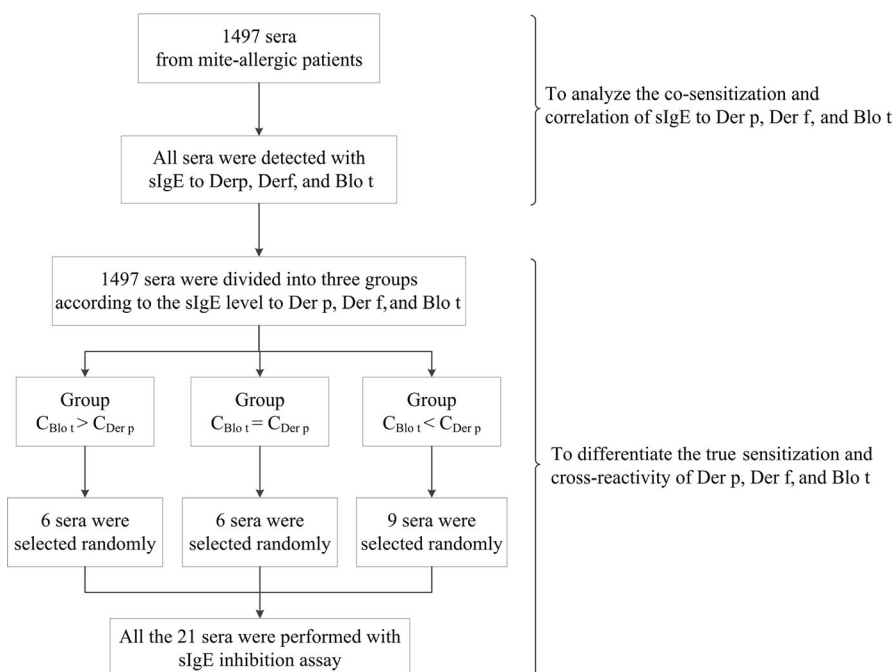
## 2 | MATERIALS AND METHODS

### 2.1 | Ethics statement

This study was approved by the Medical Ethics Committee of The First Affiliated Hospital of Guangzhou Medical University (ethics approval no. gyfyy-2016-73). All experiments were performed in accordance with relevant guidelines and regulations of the Ethics Committee of The First Affiliated Hospital of Guangzhou Medical University.

### 2.2 | Study subjects

Figure 1 shows a flowchart of our study protocol. The Allergy Information Repository of the State Key Laboratory of Respiratory



**FIGURE 1** Study design and flowchart

Disease (AIR-SKLRD) is a large serum biobank containing serum from allergic patients along with detailed clinical history and examination records.<sup>14,15</sup>

There were 1497 sera samples from mite-allergic patients stored in AIR-SKLRD, which were selected to detect sIgE level to Blo t, Der p, and Der f and to analyze the co-sensitization and correlation between them. These patients were sensitized to at least one mite detected by ImmunoCAP method (mite allergen sIgE >0.35 kU/L). The average age was 20.01 ± 17.51 years old (ranging from 1 to 86 years old), and there were 929 males and 568 females.

The 1497 sera samples were divided into three groups according to the sIgE level to Blo t, Der p, and Der f, including group  $C_{\text{Blo t}} > C_{\text{Der p}}$  (the class of sIgE to Blo t was higher than that of Der p, n = 35), group  $C_{\text{Blo t}} = C_{\text{Der p}}$  (the class of sIgE to Blo t was equal to that of Der p, n = 329), and group  $C_{\text{Blo t}} < C_{\text{Der p}}$  (the class of sIgE to Blo t was lower than that of Der p, n = 1133). Of the three groups, a total of 21 sera samples (six from group  $C_{\text{Blo t}} > C_{\text{Der p}}$ , six from group  $C_{\text{Blo t}} = C_{\text{Der p}}$ , and nine from group  $C_{\text{Blo t}} < C_{\text{Der p}}$ ) were randomly selected for sIgE inhibition assay. The characteristics of the study subjects selected in the study are shown in Table 1.

### 2.3 | Measurement of sIgE to Blo t, Der p, and Der f

Sera sIgE to Der p, Der f, and Blo t was measured with the ImmunoCAP system (Phadia 1000; Thermo Fisher Scientific Inc.) according to the manufacturer's instructions. sIgE levels were expressed in kilo units per liter (kU/L), and the detected range of sIgE was 0.1-100 kU/L. Any measurement over the upper limit of the detected range was given a value of 100 kU/L. Tests with sIgE levels lower than 0.35 kU/L were defined as sIgE-negative, otherwise, they were defined as sIgE-positive. SgE-positive tests were categorized into 6 classes: class 1 ( $\geq 0.35$ -<0.70 kU/L), class 2 ( $\geq 0.70$ -<3.50 kU/L), class 3 ( $\geq 3.50$ -<17.50 kU/L), class 4 ( $\geq 17.50$ -<50.00 kU/L), class 5 ( $\geq 50.00$ -<100.00 kU/L), and class 6 ( $\geq 100.00$  kU/L). Class 1 and class 2 were considered to be mild sensitization, class 3 and class 4 moderate sensitization, and class 5 and class 6 severe sensitization.

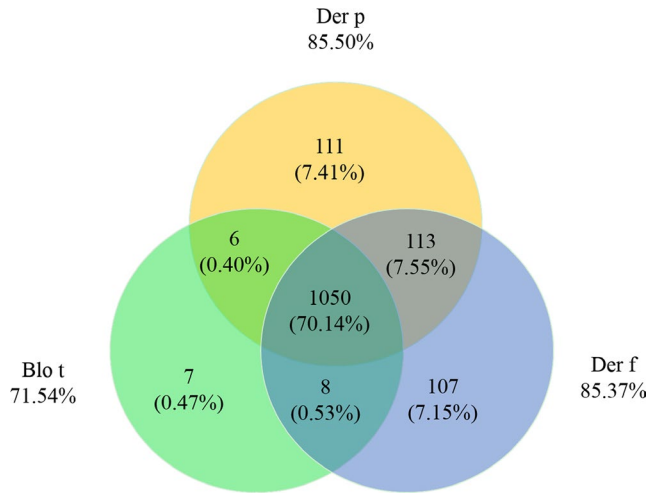
### 2.4 | Crude extract preparation of Blo t, Der p, and Der f

Der p (lot number: 327874), Der f (lot number: 326781), and Blo t (lot number: 287875) allergens were purchased from Greer Laboratories.

**TABLE 1** Characteristics of the subjects selected in the study

	Patients	Gender (M/F)	Age (M, IQR)	sIgE to Der p (KU/L)	sIgE to Der f (KU/L)	sIgE to Blo t (KU/L)
IgE analysis	1497	929/568	11 (22)	40.9 (95.95)	44.20 (95.87)	1.57 (5.75)
sIgE inhibition	21	16/5	11 (12.5)	57.5 (63.9)	77.8 (62.55)	34.3 (52.22)
Patients for inhibition assay	P1	F	51	47.5	87.8	92.4
	P2	M	8	>100	>100	13.1
	P3	M	59	54.3	>100	>100
	P4	M	17	73.8	69.9	10.1
	P5	M	13	>100	238	10.9
	P6	F	6	95.5	57.8	14.8
	P7	M	10	51.7	>100	11.5
	P8	M	10	72.2	>100	12.3
	P9	M	9	91.8	83	27.8
	P10	M	11	70.8	77.8	>100
	P11	M	11	2.63	2.28	58.2
	P12	M	13	9.1	18.12	67.04
	P13	M	7	28.5	35.6	34.3
	P14	F	61	31	39.3	25.4
	P15	M	40	44.6	>100	82.4
	P16	M	11	>100	>100	59.3
	P17	M	11	>100	>100	56.1
	P18	F	12	61	56.1	62.8
	P19	M	5	57.5	50.9	41
	P20	M	8	17.1	17.9	10.7
	P21	F	25	13.4	11.6	14.1

Abbreviations: Blo t, *Blomia tropicalis*; Der f, *Dermatophagoides farinae*; Der p, *Dermatophagoides pteronyssinus*; M (IQR), median (interquartile range); M/F, male/female; sIgE, specific IgE.



**FIGURE 2** Pattern of sensitization among ImmunoCAP positive for Blo t, Der p, and Der f. The numbers (percentage) inside the Venn diagram show number (percentage) of patients who were sensitized to one or more mites. Blo t, *Blomia tropicalis*; Der f, *Dermatophagoides farinae*; Der p, *Dermatophagoides pteronyssinus*

The allergen lyophilized cakes were dissolved in PBS, aliquoted to Eppendorf tubes, and stored at  $-80^{\circ}\text{C}$  until used. Allergen protein concentrations were determined by BCA assay (Pierce™ BCA protein assay).

## 2.5 | Allergen sIgE inhibition assay

Each serum sample was diluted to test mite sIgE concentration of approximately 10 kU/L, followed by mixing with equal volume of PBS, Blo t, Der p, and Der f allergen crude extract (2 mg/mL), respectively. After incubating at  $37^{\circ}\text{C}$  and shaking for 1 hour, the sIgE levels were measured by ImmunoCAP, and the sIgE inhibition rate was calculated using the following formula: inhibition rate =  $[(\text{sIgE}_{\text{PBS}} - \text{sIgE}_{\text{allergen}}) / \text{sIgE}_{\text{PBS}}] \times 100\%$ .

## 2.6 | Statistical analysis

Statistical software package SPSS version 19.0 was used to analyze all data. Parametric quantitative data were expressed as the mean  $\pm$  standard deviation. Non-parametric quantitative data were reported as a median value (interquartile range). Wilcoxon matched-pairs signed-rank test was used to compare the variance of data within groups, while comparison among three groups was performed with the Kruskal-Wallis test. Mann-Whitney *U* test was used to compare two groups. Correlation analyses between non-parametric data were performed using Spearman's test, with the correlation coefficients presented as " $r_s$ ." Differences were considered statistically significant when *P* values were  $<.05$ .

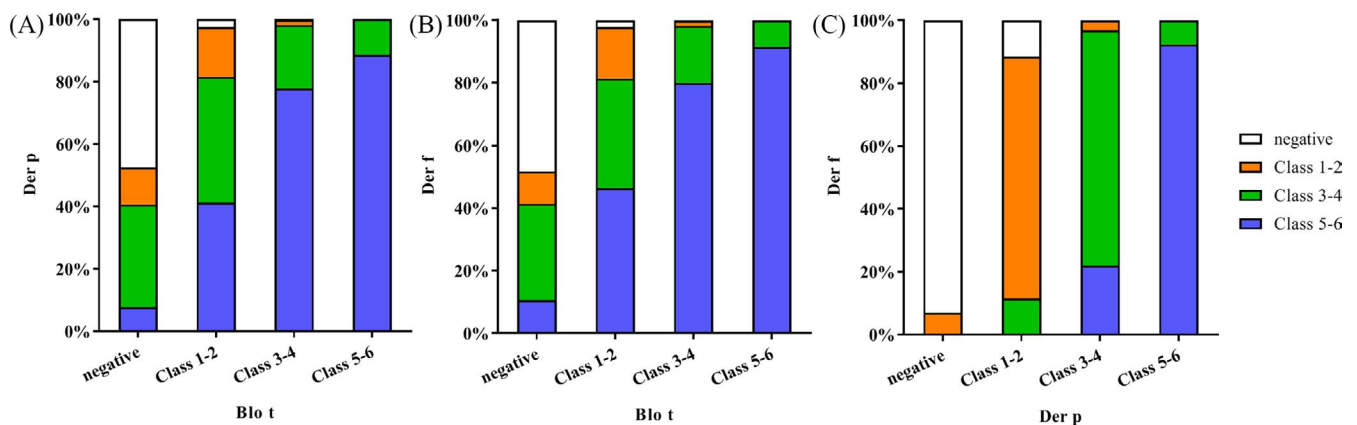
## 3 | RESULTS

### 3.1 | Pattern of sensitization among ImmunoCAP positive for Blo t, Der p, and Der f

As the Venn diagram in Figure 2 shows, 85.50% of patients were sensitized to Der p, 85.37% of patients were sensitized to Der f, and 71.54% of patients were sensitized to Blo t. Co-sensitization was found in 70.14% of patients to these three mites. Almost all Blo t-sensitized patients were sensitized to Der p (1056/1071, 98.60%) or Der f (1058/1071, 98.79%), and only seven patients were sensitized solely to Blo t. In contrast, 82.50% of Der p-sensitized and 82.79% of Der f-sensitized patients were sensitized to Blo t.

### 3.2 | Characteristics of the degree of co-sensitization among Blo t, Der p, and Der f

About 50% of Blo t sIgE-negative patients were sensitized to Der p and Der f, whereas of the Blo t-sensitized (sIgE-positive) patients, only about 2% were sIgE-negative to Der p or Der f (Figure 3). Based



**FIGURE 3** Characteristics of the degree of co-sensitization among Blo t, Der p, and Der f. X-axis represents the degree of mite sensitization, and Y-axis shows the proportion of co-sensitization among mites in different degree of sensitization. The co-sensitization proportions of one mite in the same degree were compared between groups with chi-square tests. Blo t, *Blomia tropicalis*; Der f, *Dermatophagoides farinae*; Der p, *Dermatophagoides pteronyssinus*

on the degree of sensitization, the patients were further classified into three subgroups: mild (class 1-2), moderate (class 3-4), and severe (class 5-6) sensitization. In patients co-sensitized with Blo t and Der p/Der f, as the degree of Blo t sensitization increased, the percentage of those who were severely sensitized to Der p/Der f increased significantly ( $P < .001$ ; Figure 3A,B). With respect to Der p and Der f (Figure 3C), the sIgE-negative, mild sensitization, moderate sensitization, and severe sensitization consistency rates were 93.09% (202/219), 76.87% (113/143), 74.84% (348/416), and 92.37% (617/719), respectively.

### 3.3 | Spearman correlation among the sIgE level for Blo t, Der p, and Der f

The results of the spearman correlation analysis are shown in Figure 4. We found that sensitization to Der p was highly correlated with that of Der f ( $r_s = .9487$ ,  $P < .001$ ), while the sensitization of Blo t was moderately correlated with that of Der p and Der f, with correlation coefficients  $r_s$  of .6998 ( $P < .001$ ) and .6782 ( $P < .001$ ), respectively.

### 3.4 | Results of sIgE inhibition assays

Specific IgE inhibition assay was performed among Blo t, Der p, and Der f with 21 individual sera samples from patients co-sensitized with mites, of whom the sIgE concentration is shown in Table 1. Table S1 presents the inhibition rate of IgE against the tested mites after inhibition with Blo t, Der p, and Der f extracts, respectively. Results showed that all the mite extracts almost completely inhibited their serum sIgE (with the median inhibition rate of >95%). Der p and Der f inhibited each other with a rate >44%, whereas the mutual inhibition rate between Blo t and the two *Dermatophagoides* species was ranged from 1% to 99% (Table S1). Results showed that there were significant differences in the inhibition rate of IgE binding to mites with different as well as same inhibitor, except for the inhibition rate of Der f inhibiting Der p and Der f inhibiting Blo t, as well

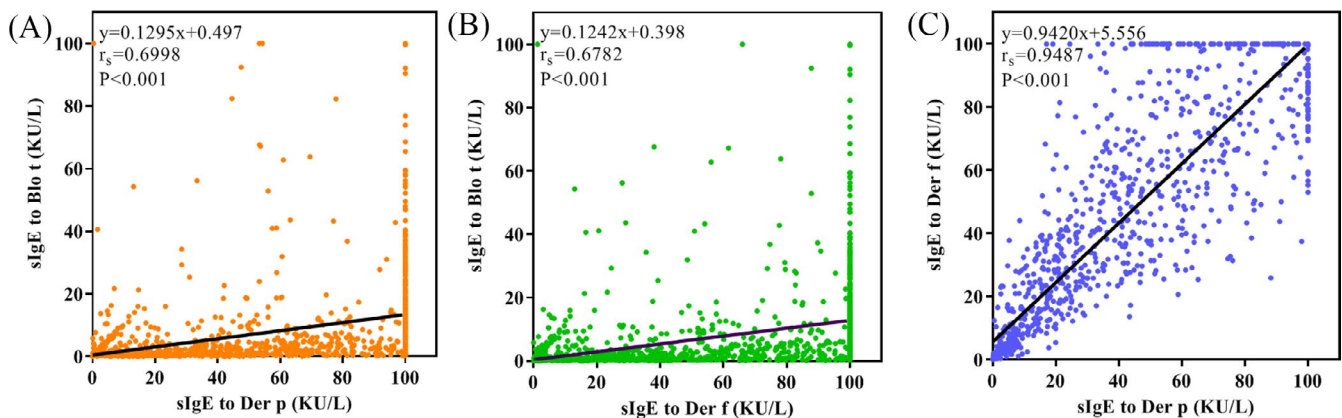
as the inhibition rate of Blo t inhibiting Der p and Blo t inhibiting Der f (Figure 5).

The mutual inhibition ability of the mites was compared by Mann-Whitney  $U$  test. Figure 6A shows that the inhibition between Der p and Blo t, as well as that between Der f and Blo t, was significantly different ( $P = .004$  and  $P = .03$ , respectively). Then, we divided patients into three groups according to the relative class of sIgE. Significant differences were found in the patient groups  $C_{\text{Blo t}} < C_{\text{Der p}}$  and  $C_{\text{Blo t}} < C_{\text{Der f}}$  (Figure 6B,C). Those with a positive inhibition rate (Blo t extract inhibited IgE binding to Der p or Der f) were lower than the reverse one (Der p or Der f extract inhibited IgE binding to Blo t;  $P < .001$ ). Four sera samples in group  $C_{\text{Blo t}} > C_{\text{Der p}}$  and three sera samples in  $C_{\text{Blo t}} > C_{\text{Der f}}$  had decreased reverse inhibition rates, but were not significantly different. In group  $C_{\text{Blo t}} = C_{\text{Der p}}$ , the reverse inhibition rates were higher than the positive ones in all sera samples but were not statistically significant (Figure 6B). However, in group  $C_{\text{Blo t}} = C_{\text{Der f}}$ , the mutual inhibition in the sera was random, and there was no significant difference in (Figure 6C).

In addition, eight sera samples from patients with Der p and Der f sIgE-positive but Blo t sIgE-negative were selected for the sIgE inhibition assay, and the characteristics and inhibition results of these patients are shown in Table S2.

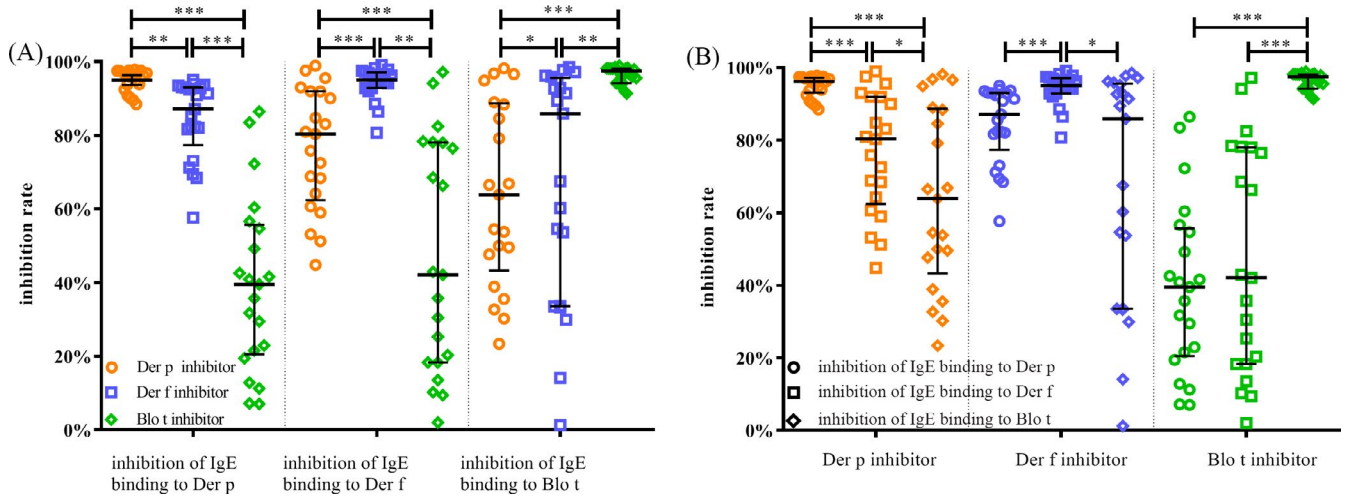
## 4 | DISCUSSION

In this study, the prevalence of Blo t, Der p, and Der f was measured in 1497 patients those who were at least sensitized to one mite, so the sensitization rates of them in our study were higher than that of a previous SPT research in this area.<sup>6</sup> Among the mite-sensitized subjects, >98% of patients were co-sensitized to at least two mites (Blo t, Der p, and Der f), and more than 70% of patients were sensitized to all three mites. These data indicate that not only Der p and Der f but also Blo t contributes to the allergic response in Guangzhou. Blo t-sensitized patients, and those co-sensitized to Der p or Der f, might have multiple sensitizations and/or cross-reaction.

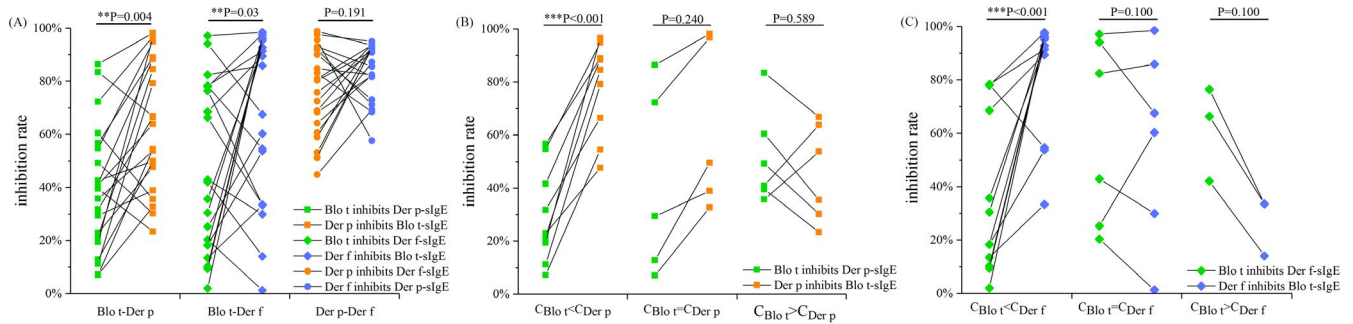


**FIGURE 4** Spearman correlation among the sIgE level for Blo t, Der p, and Der f. Correlation analyses between non-parametric data were performed using Spearman's tests, with the correlation coefficients presented as " $r_s$ ". Blo t, *Blomia tropicalis*; Der f, *Dermatophagoides farinae*; Der p, *Dermatophagoides pteronyssinus*; sIgE, specific IgE





**FIGURE 5** SlgE inhibition assays among Blo t, Der p, and Der f with 21 individual sera. For the convenience of labeling significance, we used two diagrams with different layouts. The lines in the scatter dot plot denote median and quartiles level of inhibition rate, respectively. The yellow, blue, and green colors of symbols present Der p inhibitor, Der f inhibitor, and Blo t inhibitor, respectively. The circle, triangle, and square present the inhibition of IgE binding to Der p, Der f, and Blo t, respectively. Statistical difference among inhibition rates of IgE against tested mites with the different mite inhibitor (A) was determined by Wilcoxon matched-pairs signed-rank test, and statistical difference among inhibition rate of IgE binding to different mite with the same inhibitor (B) was determined by Mann-Whitney *U* test. Differences were considered statistically significant at *P* values <.05. \*: *P* < .05, \*\*: *P* < .01, \*\*\*: *P* < .001. Blo t, *Blomia tropicalis*; Der f, *Dermatophagoides farinae*; Der p, *Dermatophagoides pteronyssinus*; slgE, specific IgE



**FIGURE 6** The mutual inhibition ability of Blo t, Der p, and Der f. The lines in (A-C) show the mutual inhibition ability of every two mites of Blo t, Der p, and Der f in the same patient. Statistical differences were determined by Mann-Whitney *U* test. Differences were considered statistically significant at *P* values <.05. \*: *P* < .05, \*\*: *P* < .01, \*\*\*: *P* < .001. Blo t, *Blomia tropicalis*; Der f, *Dermatophagoides farinae*; Der p, *Dermatophagoides pteronyssinus*; slgE, specific IgE

Within the correlation analysis of slgE, there was a highly positive correlation of slgE between Der p and Der f, and a moderate positive correlation of slgE between Blo t and Der p and between Blo t and Der f, which fit well with the findings of Kobi Sade et al.<sup>7</sup> Moreover, our results showed that as the severity of Blo t sensitization rose, the percentage of patients who were co-sensitized at a severe level to Der p/Der f also increased, indicating that cross-reaction was more likely to account for Blo t sensitization. Zheng et al.<sup>12</sup> reported the indoor allergen levels in Guangzhou city and showed that the median values of Der p 1 and Der f 1 in dust samples from living rooms and beddings were 0.015-0.33  $\mu\text{g/g}$  and 0.12-5.4  $\mu\text{g/g}$ , respectively. They also showed that 38% of dust samples from bedding had levels of HDM allergen at or above 10  $\mu\text{g/g}$ , while the median level of Blo t was below the lower limit of detection, with only 3.5%-27% of samples above the lower limit of detection. The absence of Blo t allergen

also supported to our hypothesis that the high prevalence of Blo t along with co-sensitization might be because of IgE cross-reactivity toward *Dermatophagoides* species.

To distinguish between the true sensitization and cross-reactivity of the three mites, 21 sera samples were selected for slgE inhibition. The inhibition between Der p and Der f displayed a large degree of IgE-mediated cross-reactivity, in agreement with other studies,<sup>5,16,17</sup> while the inhibition rate between Blo t and these two mites ranged from 1% to 99%, which was inconsistent with previous studies.<sup>5,10</sup> Perhaps, our study's large sample size and greater variety of slgE classes to Der p and Blo t could account for this difference.

To explain the wide inhibition rate, there was a significant difference between the ability of Der p and Der f to inhibit IgE binding to Blo t. Der p and Der f could inhibit IgE binding to Blo t better than

Blo t inhibit Der p or Der f in patients of Group  $C_{\text{Blo t}} < C_{\text{Der p}}$  and  $C_{\text{Blo t}} < C_{\text{Der f}}$ . The binding of Der p to sera sIgE could only be inhibited by Blo t with maximum inhibition rate of 60%, while Blo t sIgE could be inhibited by Der p from 50% to 99%. This indicates that Blo t sensitization in these patients is more likely not because of true sensitization but cross-reaction with Der p and Der f.

In contrast, for patients in groups  $C_{\text{Blo t}} > C_{\text{Der p}}$  and  $C_{\text{Blo t}} > C_{\text{Der f}}$ , no significant difference was revealed in the mutual inhibition between Blo t and Der p, as well as Blo t and Der f. It seems that there is a subset of people sensitized to mites but with the class of sIgE to Blo t higher than that of Der p or Der f who are sensitized to Blo t that is not explained by cross-reactivity to Der p or Der f exposure. In these mite-sensitized patients, cross-reactivity between Blo t and the other two mites is limited.

Furthermore, we have also selected eight patients who are Der p and Der f sIgE-positive (Class of sIgE level  $\geq 3$ ) and Blo t sIgE-negative patients to perform sIgE inhibition assay. Consistent with the results of Kim et al,<sup>18</sup> our study showed that the binding of IgE to Der p and Der f was not inhibited by Blo t, indicating that cross-reactivity between Der p/Der f and Blo t did not contribute to the sensitization of Der p or Der f in these patients. Thus, the positivity of Der p and Der f in these patients was because of true sensitization.

The advantages of our study are as follows. On one hand, a large number of allergic patients suspected to be sensitized to mites were selected in our study, offering valuable information about the IgE co-sensitization to the three mites. On the other hand, the sera for sIgE inhibition assay (ImmunoCAP) were randomly selected from patients with different degree of sensitization to Blo t, Der p, and Der f, which made our analysis of cross-reactivity more comprehensive. The limitation of this study was that the sera for the sIgE inhibition assay were insufficient because of the small number of patients in Group  $C_{\text{Blo t}} > C_{\text{Der p}}$  in Guangzhou city. More individual sera are needed in subsequent sIgE inhibition assays.

## 5 | CONCLUSIONS

In conclusion, sensitization to Blo t commonly coexists with sensitization to two *Dermatophagoides* species (Der p and Der f) and the IgE sensitization among them was moderately correlated. As for patients co-sensitized to mites, those who with the lower sIgE levels to Blo t are more likely to be caused by cross-reaction, while the higher sIgE level in Blo t-sensitized patients may be due to both of cross-reaction and true sensitization. sIgE inhibition assay could be used to identify cross-reaction or true sensitization. Further research recognizing the clear cross-reactive components of Blo t and two *Dermatophagoides* species could be performed using recombinant allergenic components.

## ACKNOWLEDGMENTS

This study was supported by the National Natural Science Foundation of China (Project No.: 81871736, 81802076, 81601394),

Bureau of traditional Chinese Medicine Scientific Research Project of Guangdong (Project No.: 20192048), Science and Technology Innovation Committee Project of Guangzhou (Project No.: 201831802), and Open Project of State Key Laboratory of Respiratory Disease (Project No.: SKLRD-OP-201803, SKLRD-OP-201809).

## ORCID

Baoqing Sun  <https://orcid.org/0000-0002-1671-0723>

## REFERENCES

1. Chew FT, Lim SH, Goh DY, et al. Sensitization to local dust-mite fauna in Singapore. *Allergy*. 1999;54:1150-1159.
2. Yadav A, Naidu R. Clinical manifestation and sensitization of allergic children from Malaysia. *Asia Pac Allergy*. 2015;5:78-83.
3. Castro Almarales RL, Mateo Morejon M, Naranjo Robalino RM, et al. Correlation between skin tests to *Dermatophagoides pteronyssinus*, *Dermatophagoides siboney* and *Blomia tropicalis* in Cuban asthmatics. *Allergol Immunopathol (Madr)*. 2006;34:23-26.
4. Wan KS, Yang W, Wu WF. A survey of serum specific-IgE to common allergens in primary school children of Taipei City. *Asian Pac J Allergy Immunol*. 2010;28:1-6.
5. Zheng YW, Chen S, Lai XX, et al. Indoor mite allergen levels, specific IgE prevalence and IgE cross-inhibition pattern among asthmatic children in Haikou, southern China. *Chin Med J (Engl)*. 2012;125:3059-3063.
6. Li J, Sun B, Huang Y, et al. A multicentre study assessing the prevalence of sensitizations in patients with asthma and/or rhinitis in China. *Allergy*. 2009;64:1083-1092.
7. Sade K, Roitman D, Kivity S. Sensitization to *Dermatophagoides*, *Blomia tropicalis*, and other mites in atopic patients. *J Asthma*. 2010;47:849-852.
8. Yang Y, Zhu R, Huang N, et al. The *Dermatophagoides pteronyssinus* molecular sensitization profile of allergic rhinitis patients in central China. *Am J Rhinol Allergy*. 2018;32:397-403.
9. Arlian LG, Morgan MS, Vyszynski-Moher DL, et al. Cross-reactivity between storage and dust mites and between mites and shrimp. *Exp Appl Acarol*. 2009;47:159-172.
10. Zhang C, Li J, Lai X, et al. House dust mite and storage mite IgE reactivity in allergic patients from Guangzhou, China. *Asian Pac J Allergy Immunol*. 2012;30:294-300.
11. Morales-de-Leon G, Lopez-Garcia A, Arana-Munoz O, et al. Correlation of cutaneous reactivity between allergenic extracts of *Dermatophagoides pteronyssinus* and *Dermatophagoides farinae* with *Blomis tropicalis* in patients with allergic rinitis and asthma. *Rev Allerg Mex*. 2012;59:107-112.
12. Zheng YW, Lai XX, Zhao DY, et al. Indoor allergen levels and household distributions in nine cities across China. *Biomed Environ Sci*. 2015;28:709-717.
13. Hu H, Luo W, Wu Z, et al. A pilot study on the allergen-specific IgE to molecular components on polysensitized mite allergic asthmatic patients in Guangzhou, China. *Mol Immunol*. 2019;105:38-45.
14. Sun B, Zheng P, Wei N, et al. Co-sensitization to silkworm moth (*Bombyx mori*) and 9 inhalant allergens among allergic patients in Guangzhou, Southern China. *PLoS One*. 2014;9:e94776.
15. Zeng G, Luo W, Zheng P, et al. Component-resolved diagnostic study of *Dermatophagoides pteronyssinus* major allergen molecules in a southern Chinese cohort. *J Invest Allergol Clin Immunol*. 2015;25:343-351.
16. Thomas WR, Smith W. House-dust-mite allergens. *Allergy*. 1998;53:821-832.

17. Smith AM, Benjamin DC, Hozic N, et al. The molecular basis of antigenic cross-reactivity between the group 2 mite allergens. *J Allergy Clin Immunol*. 2001;107:977-984.
18. Kim CR, Jeong KY, Yi MH, et al. Cross-reactivity between group-5 and -21 mite allergens from *Dermatophagoides farinae*, *Tyrophagus putrescentiae* and *Blomia tropicalis*. *Mol Med Rep*. 2015;12:5467-5474.

**How to cite this article:** Liu X, Zheng P, Zheng SG, et al. Co-sensitization and cross-reactivity of *Blomia tropicalis* with two *Dermatophagoides* species in Guangzhou, China. *J Clin Lab Anal*. 2019;33:e22981. <https://doi.org/10.1002/jcla.22981>

#### SUPPORTING INFORMATION

Additional supporting information may be found online in the Supporting Information section at the end of the article.