


RESEARCH ARTICLE

Open Access



# The effect of diabetes on surgical versus percutaneous left main revascularization outcomes: a systematic review and meta-analysis

Marc-André d'Entremont<sup>1,2\*</sup> , Ryuichiro Yagi<sup>2,3</sup>, Soziema J. S. Salia<sup>2</sup>, Shuqi Zhang<sup>2</sup>, Lamyaa Shaban<sup>2</sup>, Yakubu Bene-Alhasan<sup>2</sup>, Stefania Papatheodorou<sup>2</sup>, Étienne L. Couture<sup>1</sup>, Thao Huynh<sup>4</sup>, Michel Nguyen<sup>1</sup> and Rikuta Hamaya<sup>2,5</sup>

## Abstract

**Background:** The optimal method of coronary revascularization for diabetes mellitus (DM) patients with left main coronary artery disease (LMCAD) is controversial in the drug-eluting stent (DES) era.

**Methods:** We performed a systematic review and meta-analysis comparing DES-based percutaneous coronary intervention (PCI) to coronary artery bypass grafting (CABG) for LMCAD in DM patients and tested for effect measure modification (EMM) by diabetes for adverse events. We included all randomized controlled trials (RCTs) and observational studies comparing CABG to DES-based PCI including DM patients with LMCAD published up to March 1, 2021. We completed separate random-effects meta-analyses for four RCTs (4356 patients, mean follow-up of 4.9 years) and six observational studies (9360 patients, mean follow-up of 5.2 years).

**Results:** In RCTs among DM patients, DES-based PCI, compared to CABG, was associated with a 30% increased relative risk (RR) (RR 1.30, 95% CI 1.09–1.56,  $I^2 = 0\%$ ), while among non-DM patients, there was a 25% increased relative risk (RR 1.25, 95% CI 1.07–1.44,  $I^2 = 0\%$ ) for the composite endpoint of all-cause mortality, myocardial infarction, stroke, and unplanned revascularization (MACCE). There was no evidence of EMM ( $p$ -value for interaction = 0.70). The mean weighted SYNTAX score was 25.7. In observational studies, there was no difference between DES-based PCI and CABG for all-cause mortality in patients with DM (RR 1.13, 95% CI 0.91–1.40,  $I^2 = 0\%$ ).

**Conclusions:** CABG was superior to PCI for LMCAD in RCTs in DM patients for MACCE. Heart teams may consider DM as one of the many components in the clinical decision-making process, but may not want to consider DM as a primary deciding factor between DES-based PCI and CABG for LMCAD with low to intermediate anatomical complexity in the other coronary arteries.

*Study registration:* CRD42021246931 (PROSPERO).

**Keywords:** Diabetes, Drug-eluting stents, Coronary artery bypass graft, Left main coronary artery disease, Percutaneous coronary intervention

\*Correspondence: marc-andre.dentremont@usherbrooke.ca

<sup>1</sup> Division of Cardiology, Department of Medicine, Sherbrooke University Hospital Center (CHUS), 3001, 12e Avenue Nord, Sherbrooke, QC J1H 5N4, Canada

Full list of author information is available at the end of the article

## Background

Diabetes mellitus (DM) is a major risk factor for coronary artery disease and is also a predictor of adverse cardiovascular events after both coronary artery bypass grafting



© The Author(s) 2022. **Open Access** This article is licensed under a Creative Commons Attribution 4.0 International License, which permits use, sharing, adaptation, distribution and reproduction in any medium or format, as long as you give appropriate credit to the original author(s) and the source, provide a link to the Creative Commons licence, and indicate if changes were made. The images or other third party material in this article are included in the article's Creative Commons licence, unless indicated otherwise in a credit line to the material. If material is not included in the article's Creative Commons licence and your intended use is not permitted by statutory regulation or exceeds the permitted use, you will need to obtain permission directly from the copyright holder. To view a copy of this licence, visit <http://creativecommons.org/licenses/by/4.0/>. The Creative Commons Public Domain Dedication waiver (<http://creativecommons.org/publicdomain/zero/1.0/>) applies to the data made available in this article, unless otherwise stated in a credit line to the data.

(CABG) and percutaneous coronary intervention (PCI) in patients with coronary artery disease [1]. Several trials have demonstrated CABG to be superior to PCI in DM patients with multivessel disease without left main coronary artery disease (LMCAD) [2, 3]. However, evidence regarding the treatment strategy in patients with LMCAD has been sparse, as CABG had traditionally been the treatment of choice in the absence of significant contraindications [4]. With the widespread use of drug-eluting stents (DES) and the progress in the PCI technique, several recent trials have demonstrated DES-based PCI to be equivalent to CABG for LMCAD regarding the composite endpoint of long-term all-cause mortality, cardiovascular death, and myocardial infarction [5–9]. The revascularization guidelines recommend both CABG and PCI for LMCAD with low-to-intermediate anatomical complexity—however, they lack specific recommendations for LMCAD patients with DM [1, 10]. Evidence regarding whether DM status should be accounted for when choosing a revascularization strategy for LMCAD is unclear [11]. A recent meta-analysis included bare-metal stents (BMS), did not include the most relevant clinical trials and did not restrict to only LMCAD [12]. Considering the clinical equipoise for the optimal revascularization strategy comparing DES-based PCI versus CABG for LMCAD in DM patients, the unclear potential effect-measure modification (EMM) by diabetes, and the lack of adequately powered studies, an updated meta-analysis would be timely and significant. Therefore, we leveraged the recent addition of new long-term data from multiple randomized controlled trials (RCT) for LMCAD with DM subgroups to perform a systematic review and meta-analysis [6, 9]. We also included observational studies to provide an overview of the totality of the evidence.

## Methods

We registered the present meta-analysis in the PROSPERO international prospective register of systematic reviews (CRD42021246931) and followed the PRISMA guidelines (Additional file 1: Table S1) [13].

### Search strategy

We completed a systematic search of Pubmed, Embase, and the Cochrane Central Register of Controlled Trials from January 1, 1999, to March 1, 2021. We restricted our search to 1999 as this was the year of the first-in-man drug-eluting stent implantation [14]. Additional file 1: Table S2 denotes our search strategy. We also hand-searched the bibliographies of the most recent and relevant meta-analyses to identify other potentially eligible studies [5, 12, 15]. Two independent authors performed the search (MD and LS), and 6 authors (YB, MD, LS, SS, RY, and SZ) performed the literature review

using the Covidence platform (Covidence systematic review software, Veritas Health Innovation, Melbourne, Australia). Two of the 6 authors (YB, MD, LS, SS, RY, or SZ) independently reviewed each study, and disputes were resolved by consensus following discussion with 1 of 2 authors (MD and RY) who was not involved in the conflict.

### Inclusion and exclusion criteria

All published RCTs and observational studies directly comparing DES-based PCI to CABG with effect estimates available for patients with DM and LMCAD were considered eligible. All studies were required to have more than 1 year of follow-up to allow for a meaningful accrual of events. Observational studies were included if they provided adjusted estimates by either propensity score methods or multivariable outcome regression. The study with the longest follow-up was used if multiple studies were published based on the same study population. We excluded all studies that only had effect estimates using BMS.

### Endpoints

The endpoint for the analysis of RCTs was the composite endpoint of all-cause mortality, myocardial infarction, stroke, or unplanned revascularization (MACCE) which was available in all included RCTs. Of note, individual components of MACCE were not available for patients with and without DM. A summary of definitions of the outcomes in the included RCTs is provided (Additional file 1: Table S3). Three endpoints for the observational studies were compiled: (1) all-cause mortality, (2) the composite endpoint of all-cause mortality, myocardial infarction, or stroke, and (3) unplanned revascularization.

### Data extraction and risk of bias

The number of CABG and DES-based PCI patients, the number of patients with and without DM, age, follow-up time, the proportion of patients having an acute coronary syndrome (ACS) as the indication for revascularization, coronary artery disease severity, stent type, and relevant endpoints were extracted once by 1 of 5 authors (BY, LS, SS, RY, and SZ). A sixth author (MD) extracted all data independently a second time. Included RCTs were assessed for bias using Cochrane's Collaboration risk-of-bias tool [16]. We used the ROBINS-I tool for the observational studies to evaluate study quality [17].

### Statistical analysis

For the randomized trials, the outcome was analyzed on an intention-to-treat basis, and intervention and control groups were used to compute relative risks (RR). For observational studies, the adjusted hazard ratios were

approximated to RR under the assumption of rare outcomes [18]. We performed random-effects meta-analyses with the restricted maximum likelihood estimator using the DerSimonian-Laird method separately for the RCTs and observational studies. To assess EMM, we compared the pooled estimates from the DM patients to the non-DM patients and performed subgroup analyses for interaction.

We used the  $I^2$  statistic to evaluate heterogeneity [19]. The extent of heterogeneity was considered low, moderate, substantial, and considerable if the  $I^2$  statistic was 0–40%, 30–60%, 50–90%, and 75–100%, respectively. To examine the robustness of our findings, we performed sensitivity analyses: (1) fixed-effect meta-analysis for the RCTs and (2) influence analysis for the observational studies. Furthermore, we examined for funnel plot asymmetry to detect potential publication bias and used Egger's test to detect small study effects only for the observational studies due to the number of studies. [20, 21] Median and interquartile ranges were transformed into weighted means (weighted by the number of study participants) as appropriate using the method described by Wan et al. [22]

We also performed meta-regression by follow-up time as a continuous variable, by the proportion of three-vessel disease, and by the proportion of patients who had an acute coronary syndrome (ACS) as the indication for revascularization for the composite of all-cause mortality, myocardial infarction, and stroke in the observational studies. Statistical significance was set at a threshold of  $p < 0.05$ , and 95% confidence intervals (CI) were computed. All analyses were performed using the *metan* package in Stata version 16.1 (StataCorp, College Station, TX, USA).

## Results

Figure 1 (PRISMA flowchart) describes the selection of studies for the analysis. The characteristics of the included studies are summarized in Table 1. Four RCTs containing 4356 patients with a mean weighted follow-up of 4.9 years were included [6, 7, 9, 23]. Among the RCTs, 2186 patients (50.2%) were treated by DES-based PCI, and 1080 patients (24.8%) had DM. The mean weighted age was 65.5 years, and the mean weighted SYNTAX score was 25.7. The total number of accrued MACCE events across the four RCTs was 1058, of which 331 (31.3%) were in the DM groups and 727 (68.7%) in the non-DM group.

Furthermore, a total of 6 observational studies, including 9360 patients with a mean weighted follow-up of 5.2 years were analyzed [24–29]. Of these total patients, 4237 patients (45.3%) were treated by DES-based PCI, and 3669 (39.2%) had DM. The mean weighted age was

62.8 years. Furthermore, 1745 of 4237 DES patients (41.2%) compared to 3898 of 5123 CABG patients (76.1%) had LMCAD plus 3-vessel disease, respectively. Patients who underwent CABG had a significantly more extensive coronary artery disease than DES-treated patients in all but one study (Lee et al., 2017). No clear trend emerged for age and ACS presentation.

## Risk of bias evaluation

The risk of bias evaluation is summarized in Additional file 1: Tables S4 and S5. We evaluated all the RCTs as having 'some concern' for bias. The 'measurement of outcome' domain was judged to be of 'some concern' for the Morice et al. [7], the Milojevic et al. [23], and the Holm et al. [6] studies as blinding of the adjudication committee was unspecified. The 'randomization process' domain was judged to be of some concern for the Park et al. [9] study as this was the only RCT where the randomization was not stratified for LMCAD and diabetes.

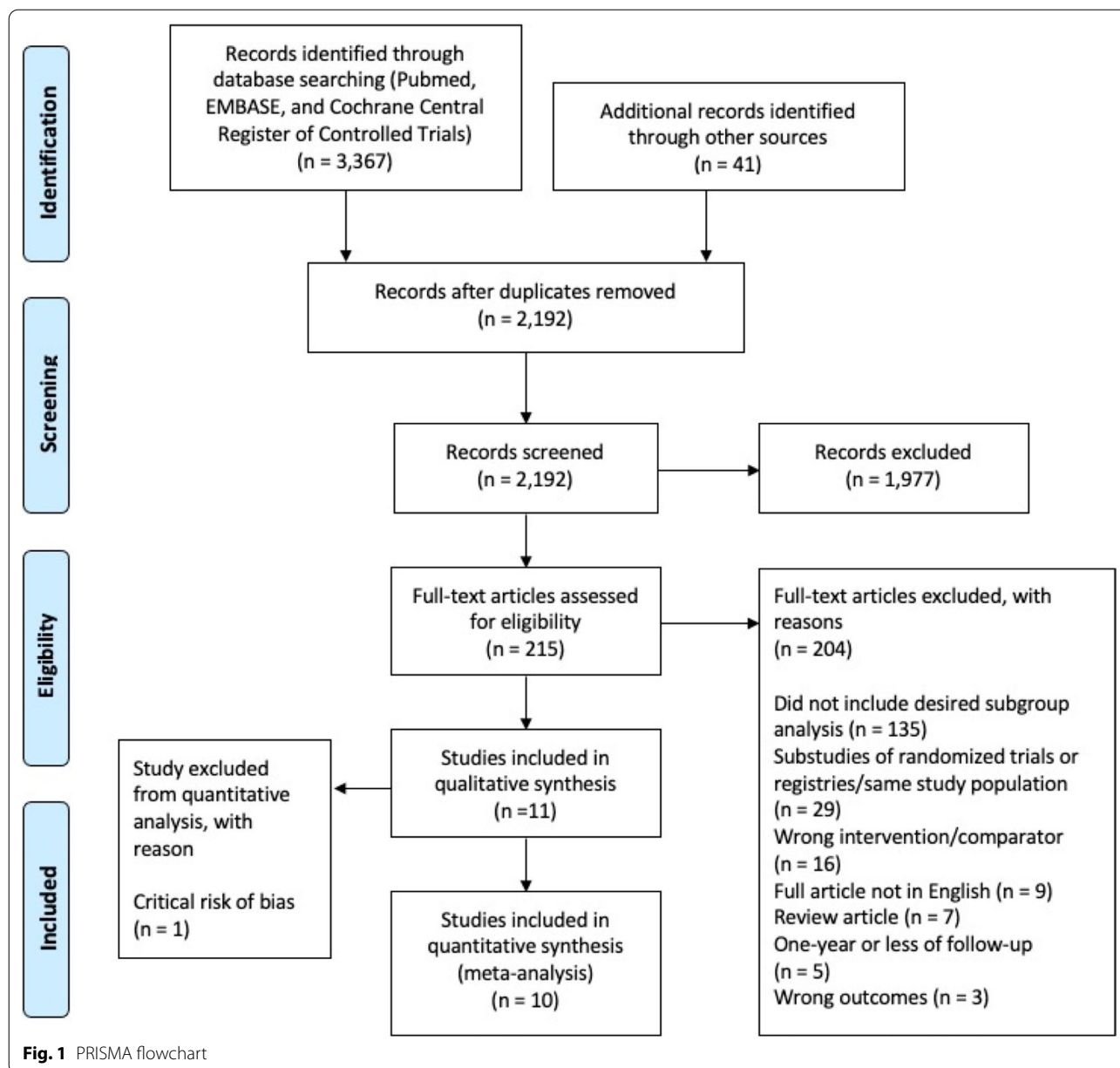
We evaluated the observational studies as having a 'moderate' to 'serious' risk of bias. Two of the smaller studies (Zhao et al. [24] and Yu et al. [26]) were judged to be at serious risk of overall bias because of suboptimal confounding adjustment, and all studies were deemed to be minimally at moderate risk of bias for participant selection because of confounding by indication bias [24, 26]. One study was excluded due to 'critical' risk of bias because the adjustment for confounding was judged to be insufficient [30].

## Randomized controlled trials

At the longest follow-up, DM patients who underwent DES-based PCI with DES had a 30% relative increase (RR=1.30, 95% CI 1.09–1.56,  $p$ -value=0.004) in MACCE compared to those who underwent CABG for LMCAD ( $I^2=0.0\%$ ,  $p$ -value=0.97) (Fig. 2). Non-DM patients treated by DES-based PCI experienced a 25% relative increase (RR=1.25, 95% CI 1.07–1.44,  $p$ -value=0.004) in MACCE compared to patients treated by CABG ( $I^2=23.0\%$ ,  $p$ -value=0.27). There was no evidence of EMM by diabetes ( $p$ -value for interaction=0.70).

## Observational studies

Using the five studies with available individual death outcomes, there was no difference between DES-based PCI and CABG for DM patients regarding all-cause mortality (RR=1.13, 95% CI 0.91–1.40,  $p$ -value=0.28) (Fig. 3). There was no evidence for heterogeneity ( $I^2=0\%$ ,  $p$ -value=0.42). Using the 3 studies with available data on non-DM patients, there was no evidence of EMM ( $p$ -value for interaction=0.54) (Additional file 1: Figure S1).



At the longest follow-up of all 6 observational studies, there was no difference between DM patients who underwent PCI with DES compared to CABG for LMCAD for the composite of all-cause mortality, myocardial infarction, or stroke (RR 1.00, 95% CI 0.77–1.29,  $p$ -value = 0.99) (Fig. 4). However, we observed substantial heterogeneity ( $I^2 = 63.9%$ ,  $p$ -value = 0.02). In the pooled analysis of the four studies with available data on non-DM patients, no evidence of EMM by diabetes was found for DES-based PCI versus CABG for this composite endpoint ( $p$ -value for interaction = 0.58) (Additional file 1: Figure S2).

Using the 5 studies with available individual unplanned revascularization outcomes, the risk of unplanned revascularization among DM patients who underwent DES-based PCI was 4.5 times higher than for patients who underwent CABG (RR = 4.65, 95% CI 2.90–7.45,  $p$ -value = <0.0001) (Fig. 5). We observed moderate to substantial heterogeneity ( $I^2 = 58.6%$ ,  $p$ -value = 0.05). With the 3 available studies with effect estimates for non-DM patients, the wide confidence intervals of both groups overlapped ( $p$ -value for interaction = 0.68) (Additional file 1: Figure S3).

**Table 1** Study characteristics

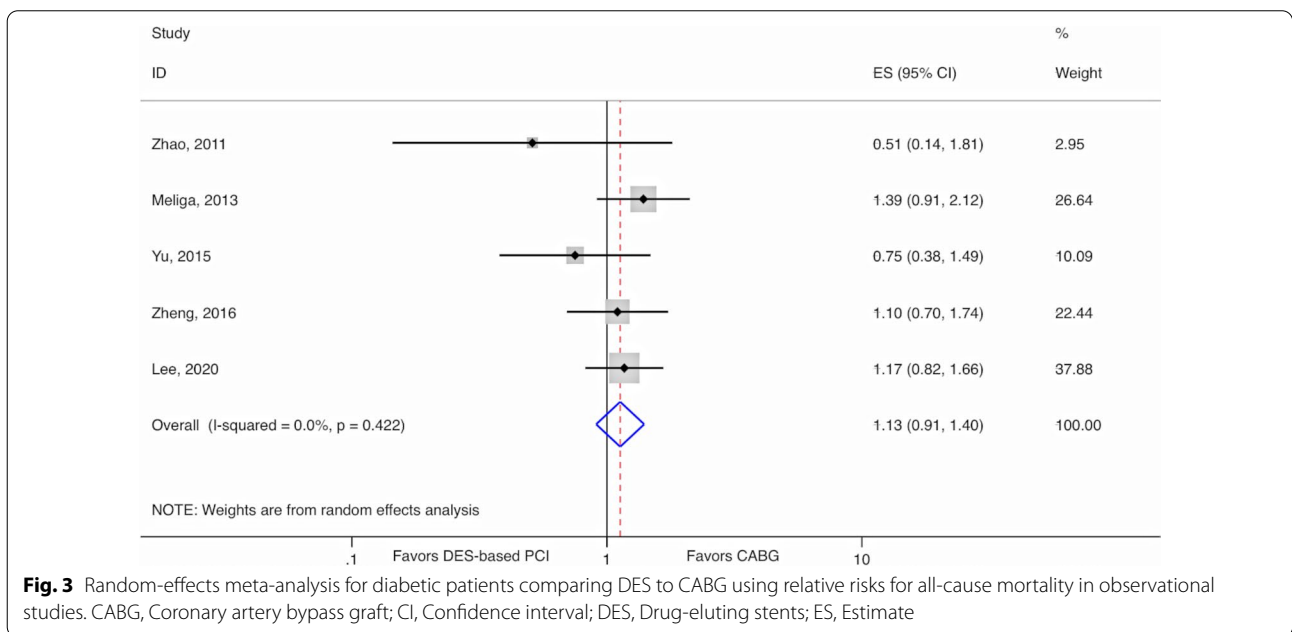
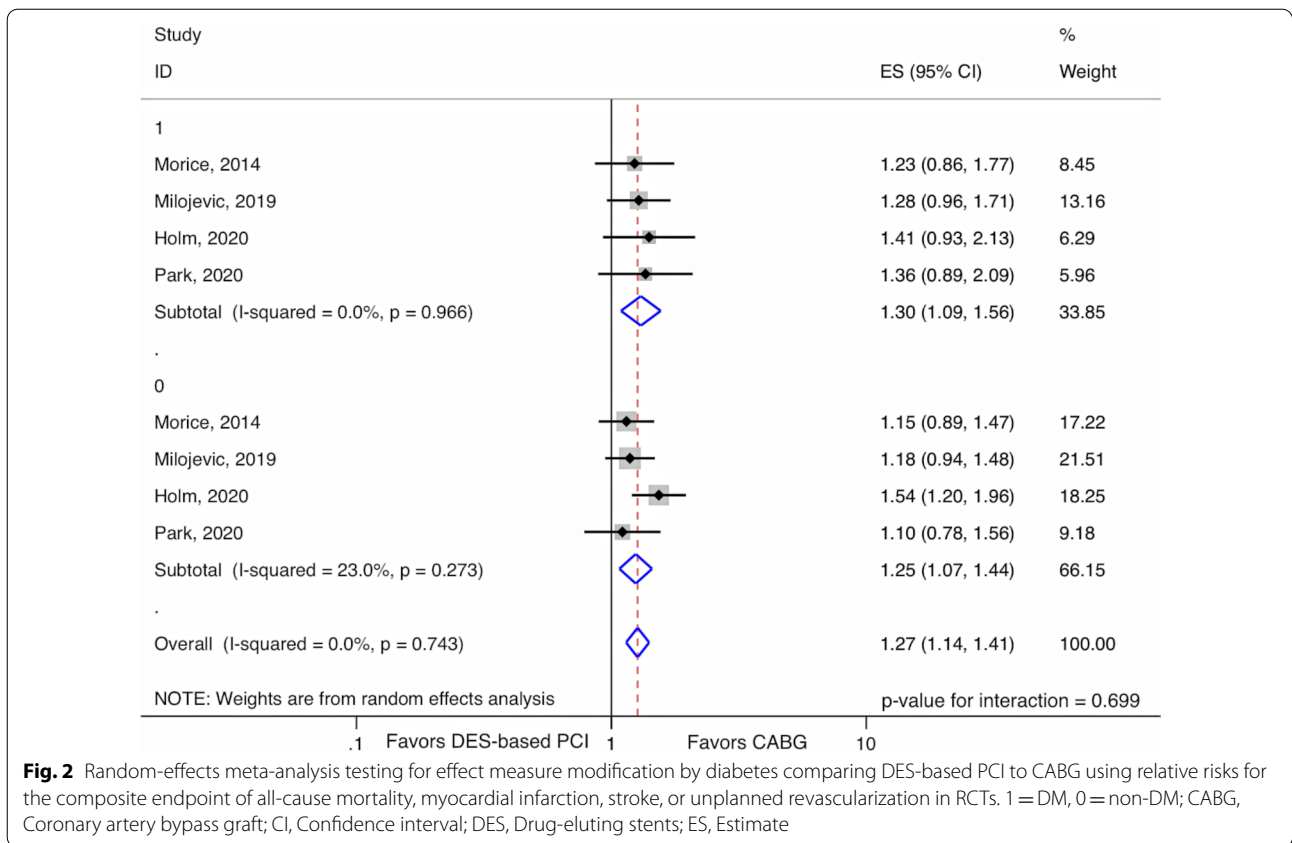
Author	Years	Number of DES/CABG patients	Number of DM/non-DM patients	Age* (years)	Follow-up (years)	ACS (%)	Coronary artery disease severity	Entry criteria	Stent type	Primary outcome	Adjusting method	Risk of bias
<i>Randomized controlled trials</i>												
Morice et al.	2014	346/322	150/518	65.5 (9.9)	5 (mean)	29.8	Mean SYNTAX score (core-lab): 29.6 DES/30.2 CABG	≥ 50% ULMCA visual stenosis Silent ischemia or stable/unstable angina	Pacitaxel	Composite of all-cause mortality, stroke, MI, or repeat revascularization at 5-year follow-up	Randomization	Some concern
Milojevic et al.	2019	948/956	554/1350	65.9 (9.6)	3 (mean)	39.2	Mean SYNTAX score (core-lab): 26.9 DES/26 CABG	≥ 70% ULMCA visual stenosis, 50–70% stenosis if significant by invasive or non-invasive testing, SYN-TAX ≤ 32 Silent ischemia, angina, or ACS	Everolimus	Composite of all-cause mortality, MI, or stroke at median 3-year follow-up	Randomization	Some concern
Holm et al.	2020	592/592	184/1000	66.4 (9.7)	4.9 (median)	17.4	Mean SYNTAX score (core-lab): 22.5 DES/22.4 CABG	≥ 50% ULMCA visual stenosis or FFR ≤ 0.8 Angina, ACS ≤ 3 additional non-complex lesions	Biolimus	Composite of all-cause mortality, stroke, non-index treatment-related MI or unplanned revascularization at 5 years or until 275 events	Randomization	Some concern
Park et al.	2020	300/300	192/408	62.3 (9.8)	11.3 (median)	50.5	Mean SYNTAX score (core-lab): 22.4 DES/25.8 CABG	≥ 50% ULMCA visual stenosis Silent ischemia, angina, NSTEACS	Sirolimus	Composite of all-cause mortality, MI, stroke, or ischemia-driven revascularization at 10-year follow-up	Randomization	Some concern

**Table 1** (continued)

Author	Years	Number of DES/CABG patients	Number of DM/non-DM patients	Age* (years)	Follow-up (years)	ACS (%)	Coronary artery disease severity	Entry criteria	Stent type	Primary outcome	Adjusting method	Risk of bias
<i>Observational studies</i>												
Zhao et al.	2011	56/116	172/0	61 (N/A)	2.4 (median)	98.3	LMCAD + 3- vessel disease: 46.4% DES/73.3% CABG	ULMCAD (severity unspecified) Medically treated DM patients	Sirolimus (94.6%), Zotarolimus (5.4%)	All-cause mortality	Multivariable outcome regression	Serious
Meliga et al.	2013	520/306	826/0	66.9 (9.7)	4.0 (mean)	66.8	LMCAD + 3- vessel disease: 38.1% DES/72.9% CABG	ULMCAD (severity unspecified) Medically treated DM patients	Sirolimus (57.9%), Paclitaxel (40.0%), Zotarolimus (0.2%), Everolimus (1.9%)	Composite endpoint of death, myocardial infarction, or stroke	Propensity score with outcome regression	Moderate
Yu et al.	2015	465/457	274/648	62.8 (N/A)	7.1 (median)	81.0	LMCAD + 3- vessel disease: 35.3% DES/67.2% CABG	≥ 50% ULMCA visual stenosis	DES unspecified	Composite endpoint of death, myocardial infarction, or stroke	Multivariable outcome regression	Serious
Zheng et al.	2016	1442/2604	1154/2892	61.4 (98)	3 (mean)	52.3	LMCAD + 3- vessel disease: 34.5% DES/78.7% CABG	≥ 50% ULMCA visual stenosis	DES unspecified	All-cause mortality at 3-years	Propensity score with outcome regression	Moderate
Lee et al.	2017	950/950	736/1164	64.6 (9.8)	4.7 (median)	58.0	LMCAD + 3- vessel disease: 60.9% DES/61.4% CABG	≥ 50% ULMCA visual stenosis	DES unspecified	Composite endpoint of death, myocardial infarction, or stroke	PSM	Moderate
Lee et al.	2020	804/690	507/987	62.1 (10.6)	12 (median)	72.1	LMCAD + 3- vessel disease: 34.0% DES/94.1% CABG	≥ 50% ULMCA visual stenosis	DES unspecified	All-cause mortality	IPTW	Moderate

ACS, Acute coronary syndrome; CABG, Coronary artery bypass surgery; DES, Drug-eluting stents; DM, Diabetes mellitus; IPTW, inverse probability of treatment weighting; NSTEMI, Non-ST elevation acute coronary syndrome; PSM, propensity score matching; ULMCA, Unprotected left main coronary artery; ULMCAD, Unprotected left main coronary artery disease

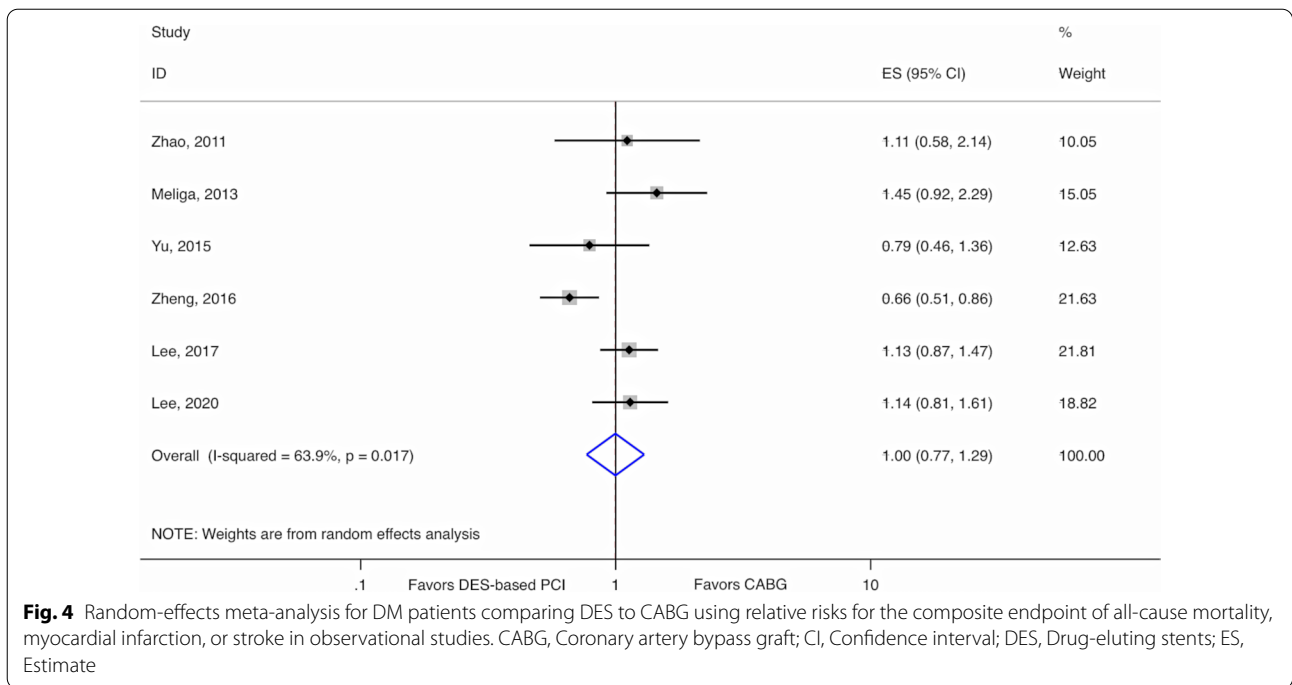
\*Age converted from median into means using the method described by Wan et al. when appropriate [24]



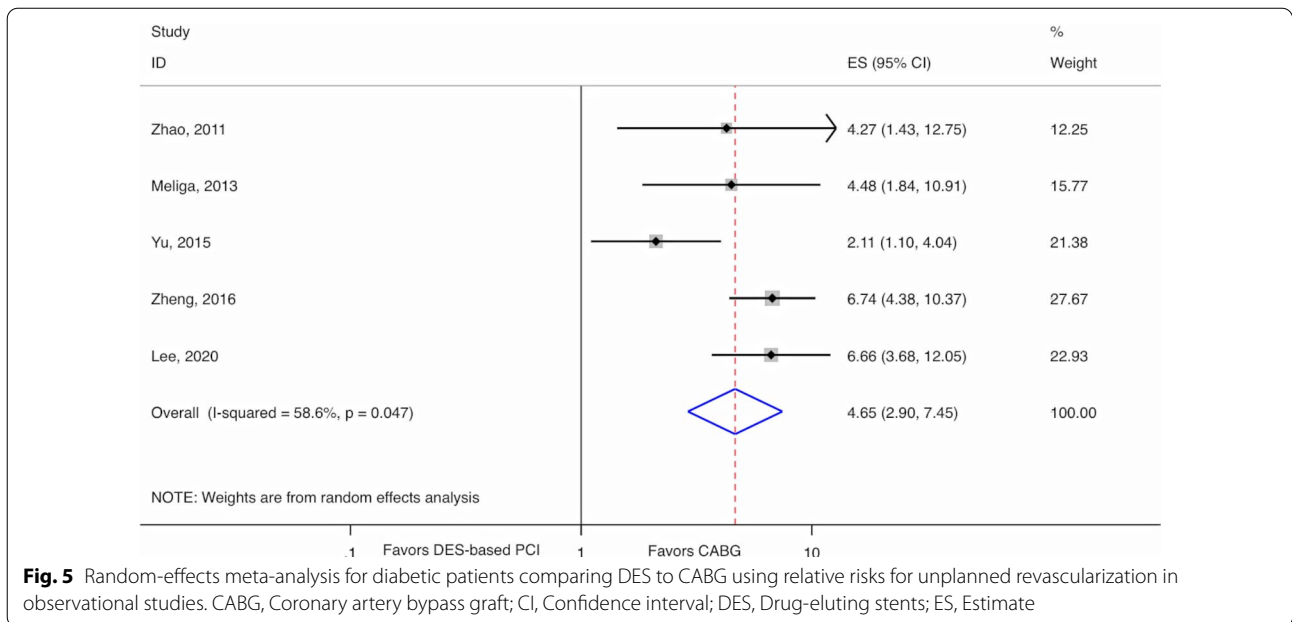
**Sensitivity analyses**

For the RCTs, the fixed-effects meta-analysis generated nearly identical results compared to the random

effects analysis (Additional file 1: Figure S4). For the observational studies, the leave-one-out analysis demonstrated that while the Zheng et al. study had the most



**Fig. 4** Random-effects meta-analysis for DM patients comparing DES to CABG using relative risks for the composite endpoint of all-cause mortality, myocardial infarction, or stroke in observational studies. CABG, Coronary artery bypass graft; CI, Confidence interval; DES, Drug-eluting stents; ES, Estimate



**Fig. 5** Random-effects meta-analysis for diabetic patients comparing DES to CABG using relative risks for unplanned revascularization in observational studies. CABG, Coronary artery bypass graft; CI, Confidence interval; DES, Drug-eluting stents; ES, Estimate

influence, not one study significantly altered the results (Additional file 1: Figure S5). On visual inspection of the funnel plot for the composite outcome of all-cause mortality, myocardial infarction, or stroke, no evidence for significant publication bias was observed (Egger's  $p$ -value = 0.60) (Additional file 1: Figure S6).

The meta-regression for follow-up time (slope = 0.01,  $p$ -value = 0.87), proportion of three-vessel disease for PCI patients (slope = 0.76,  $p$ -value = 0.56), and clinical presentation with ACS (slope = 0.58,  $p$ -value = 0.58) for the composite outcome of all-cause mortality, myocardial infarction, or stroke in DM patients were all non-significant in the observational studies.



## Discussion

Our study aims to shed insight on the impact of diabetes on clinical outcomes after DES-based PCI versus CABG for LMCAD. Based on RCT data, we demonstrated that DES-based PCI was inferior compared to CABG for the composite of all-cause mortality, myocardial infarction, stroke, or unplanned revascularization irrespective of DM status with a mean weighted follow-up of 4.9 years. Our data suggests that diabetes was not an effect modifier. There was no difference between DES-based PCI and CABG for all-cause mortality with a weighted follow-up of 5.2 years in the observational studies. Our meta-analysis is the first leveraging data from DM and non-DM patients from the four largest randomized controlled LMCAD revascularization trials and data from observational studies with restriction to include only DES [12]. These data may aid revascularization modality decision-making for heart teams treating DM patients with LMCAD.

Our finding that DES was inferior to CABG for DM patients for MACCE is consistent with the average population effects of all four RCTs [6–9]. Of note, the EXCEL and Nordic-Baltic-British left main revascularization study (NOBLE) trials performed randomization stratified according to the presence of diabetes, the Synergy between PCI with Taxus and Cardiac Surgery (SYNTAX) trial performed randomization stratified according to LMCAD and diabetes, while the Premier of Randomized Comparison of Bypass Surgery versus Angioplasty Using Sirolimus-Eluting Stent in Patients with Left Main Coronary Artery Disease (PRECOMBAT) trial did not stratify on diabetes status [6–9]. All four trials had pre-specified subgroup analyses comparing DM to non-DM patients that were negative for interaction. However, each trial was underpowered to detect EMM. The largest trial (EXCEL) had only 390 MACCE (248 for DM patients and 142 for non-DM patients) [8, 23]. With the caveat that EMM is a low-power analysis compared to testing for main effects, we were able to accrue nearly a three-fold increase in MACCE with 1058 in total (331 in DM patients and 727 in non-DM patients) [31]. Furthermore, as the effect estimates were nearly identical for the diabetic and non-diabetic patients, this suggests, even in the presence of potentially suboptimal power, that diabetes was not a strong effect modifier of the association of revascularization strategy and outcome.

Studies have demonstrated that DM patients are more likely to have more diffuse disease, greater atherosclerotic burden, and increased lipid-rich plaques than non-DM patients [32, 33]. Furthermore, patients with DM are at higher risk of stent restenosis due to an exaggerated cellular and matrix proliferation response [34]. In the overall population, all-cause mortality after CABG seems to be lower than after PCI in patients with a high SYNTAX

score of  $\geq 33$  [35–37]. However, there appears to be no difference in mortality in patients with low SYNTAX scores of less than 33 [37–40]. The mean weighted SYNTAX score from our analysis was in the lower range of the intermediate category. Our data suggest that diabetes may play a less critical role in patients with smaller burdens of coronary artery disease, even if the left main artery is involved.

The main reason for including observational studies in our study, apart from obtaining a total body of evidence, was to analyze the individual components of MACCE that were not available from study-level data of the RCTs. In observational studies, surgical ineligibility dictating treatment selection is likely to cause selection bias and confer a worse prognosis to DES-treated patients even in the presence of multivariable adjustment [41]. However, our results demonstrated no difference between DES and CABG for all-cause mortality. Considering that unplanned revascularization rates are the main drivers of the difference in MACCE between DES-based PCI and CABG in RCTs, these results are compatible with our analysis of RCTs [42]. Furthermore, this is consistent with the average population effects reported in the RCTs and a recent meta-analysis [5–9].

The present meta-analysis has several limitations. First, it must be highlighted that our results should be considered as hypothesis-generating, as null findings may be a function of lack of power. However, the four included RCTs demonstrated consistent results, supporting our conclusions. Second, individual studies used different definitions for the endpoints, especially for myocardial infarction and unplanned revascularization. While much information is available regarding outcome definitions for RCTs, observational studies provided less detail and may have been a source of heterogeneity for outcomes other than all-cause mortality. Third, several observational studies had violations of the proportional hazards assumption as CABG may provide more significant benefit during longer follow-ups [24, 25, 27, 29]. However, calculating the restricted mean survival time was not possible without the published adjusted survival curves or individual participant data [43]. Finally, the PCI technique for LMCAD is a rapidly evolving field, and categorizing PCI as DES-based or BMS-based could be seen as simplistic. The impact of intravascular imaging, newer DES platforms with increased radial strength, and different bifurcation strategies could have a clinical effect beyond whether DES was used when PCI is compared to CABG.

## Conclusion

In RCTs, DES-based PCI was associated with an increased risk in the composite endpoint of all-cause mortality, myocardial infarction, stroke, and unplanned revascularization

compared to CABG in LMCAD patients with or without diabetes. No EMM by DM status was observed. Furthermore, there was no difference for all-cause mortality in the observational studies. Heart teams may consider DM as one of the many components in the clinical decision-making process, but may not want to consider DM as a primary deciding factor between DES-based PCI and CABG for LMCAD with low to intermediate anatomical complexity in the other coronary arteries.

#### Abbreviations

ACS: Acute coronary syndrome; BMS: Bare-metal stents; CABG: Coronary artery bypass graft; CI: Confidence intervals; DES: Drug-eluting stents; DM: Diabetes mellitus; EMM: Effect-measure modification; LMCAD: Left main coronary artery disease; MACCE: Major adverse cardiovascular and cerebrovascular events; PCI: Percutaneous coronary intervention; RCT: Randomized controlled trial; RR: Relative risk.

#### Supplementary Information

The online version contains supplementary material available at <https://doi.org/10.1186/s13019-022-01795-v>.

**Additional file 1. Table S1.** The PRISMA 2020 27-item checklist for reporting in systematic reviews and meta-analyses. **Table S2.** The detailed search strategy for PubMed, Embase and the Cochrane Central Register of Controlled Trials (CENTRAL). **Table S3.** Detailed definitions of key outcomes from the four included randomized controlled trials (Morice et al. 2014, Milojevic et al. 2019, Holm et al. 2020, and Park et al. 2020). **Table S4.** Detailed evaluation of the risk of bias for the randomized controlled trials using the Cochrane's Collaboration risk-of-bias (RoB 2) tool. **Table S5.** Detailed evaluation of the risk of bias for the observational studies using the Risk of Bias in Non-randomized Studies of Interventions (ROBINS-I) tool. **Figure S1.** Random-effects meta-analysis testing for effect measure modification by diabetes comparing DES to CABG using relative risks for all-cause mortality. 1 = DM, 0 = non-DM; ES, estimate; CI, confidence interval. **Figure S2.** Random-effects meta-analysis testing for effect measure modification by diabetes comparing DES to CABG using relative risks for all-cause mortality, myocardial infarction, or stroke. 1 = DM, 0 = non-DM; ES, estimate; CI, confidence interval. **Figure S3.** Random-effects meta-analysis testing for effect measure modification by diabetes comparing DES to CABG using relative risks for revascularization. 1 = DM, 0 = non-DM; ES, estimate; CI, confidence interval. **Figure S4.** Fixed effects meta-analysis comparing DES to CABG in diabetic patients using relative risks for the composite endpoint of all-cause mortality, myocardial infarction, stroke, or unplanned revascularization. 1 = DM, 0 = non-DM; ES, estimate; CI, confidence interval. **Figure S5.** Influence analysis with each study being excluded in turn. 1, Zhao 2011; 2, Meliga 2013; 3, Yu 2015; 4, Zheng 2016; 5, Lee 2017; 6, Lee 2020. **Figure S6:** Funnel plot of the observational studies for the composite endpoint of all-cause mortality, myocardial infarction, or stroke.

#### Acknowledgements

The authors would like to acknowledge Dr. Paul Bain for his contribution to the search strategy.

#### Authors' contributions

All the authors contributed to the design and research question of the study. MD, RY, SS, SZ, LS, and YBA performed the systematic review and statistical analysis. MD wrote the first draft of the manuscript. All authors reviewed and edited the manuscript.

#### Funding

The authors have no funding to declare.

#### Availability of data and materials

The data that support the study findings are available from the online publication databases as mentioned in the manuscript.

#### Declarations

##### Ethics approval and consent to participate

The study complies with the Declaration of Helsinki. Due to the review nature of the manuscript, approbation by an ethics committee was not required.

##### Consent for publication

Not applicable.

##### Competing interests

The authors declare that they have no competing interests.

##### Author details

<sup>1</sup>Division of Cardiology, Department of Medicine, Sherbrooke University Hospital Center (CHUS), 3001, 12e Avenue Nord, Sherbrooke, QC J1H 5N4, Canada. <sup>2</sup>Harvard T.H. Chan School of Public Health, Boston, MA, USA. <sup>3</sup>Saiseikai Central Hospital, Tokyo, Japan. <sup>4</sup>McGill Health University Center, Montreal, QC, Canada. <sup>5</sup>Brigham and Women's Hospital, Boston, MA, USA.

Received: 16 December 2021 Accepted: 12 March 2022

Published online: 01 April 2022

#### References

1. Neumann FJ, Sousa-Uva M, Ahlsson A, Alfonso F, Banning AP, Benedetto U, Byrne RA, Collet JP, Falk V, Head SJ, et al. 2018 ESC/EACTS guidelines on myocardial revascularization. *Eur Heart J*. 2019;40(2):87–165.
2. Kamalesh M, Sharp TG, Tang XC, Shunk K, Ward HB, Walsh J, King S 3rd, Colling C, Moritz T, Stroupe K, et al. Percutaneous coronary intervention versus coronary bypass surgery in United States veterans with diabetes. *J Am Coll Cardiol*. 2013;61(8):808–16.
3. Farkouh ME, Domanski M, Sleeper LA, Siami FS, Dangas G, Mack M, Yang M, Cohen DJ, Rosenberg Y, Solomon SD, et al. Strategies for multivessel revascularization in patients with diabetes. *N Engl J Med*. 2012;367(25):2375–84.
4. Park SJ, Park DW. Diabetes in myocardial revascularization for left main coronary artery disease: predictor or decision maker? *J Am Coll Cardiol*. 2019;73(13):1629–32.
5. Ahmad Y, Howard JP, Arnold AD, Cook CM, Prasad M, Ali ZA, Parikh MA, Kosmidou I, Francis DP, Moses JW, et al. Mortality after drug-eluting stents vs. coronary artery bypass grafting for left main coronary artery disease: a meta-analysis of randomized controlled trials. *Eur Heart J*. 2020;41(34):3228–35.
6. Holm NR, Mäkikallio T, Lindsay MM, Spence MS, Erglis A, Menown IBA, Trovik T, Kellerth T, Kalinauskas G, Mogensen LJH, et al. Percutaneous coronary angioplasty versus coronary artery bypass grafting in the treatment of unprotected left main stenosis: updated 5-year outcomes from the randomised, non-inferiority NOBLE trial. *The Lancet*. 2020;395(10219):191–9.
7. Morice MC, Serruys PW, Kappetein AP, Feldman TE, Stahle E, Colombo A, Mack MJ, Holmes DR, Choi JW, Ruzyllo W, et al. Five-year outcomes in patients with left main disease treated with either percutaneous coronary intervention or coronary artery bypass grafting in the synergy between percutaneous coronary intervention with taxus and cardiac surgery trial. *Circulation*. 2014;129(23):2388–94.
8. Stone GW, Kappetein AP, Sabik JF, Pocock SJ, Morice MC, Puskas J, Kandzari DE, Karpaliotis D, Brown WM 3rd, Lembo NJ, et al. Five-year outcomes after PCI or CABG for left main coronary disease. *N Engl J Med*. 2019;381(19):1820–30.
9. Park DW, Ahn JM, Park H, Yun SC, Kang DY, Lee PH, Kim YH, Lim DS, Rha SW, Park GM, et al. Ten-year outcomes after drug-eluting stents versus coronary artery bypass grafting for left main coronary disease: extended follow-up of the PRECOMBAT trial. *Circulation*. 2020;141(18):1437–46.
10. Fihn SD, Gardin JM, Abrams J, Berra K, Blankenship JC, Dallas AP, Douglas PS, Foody JM, Gerber TC, Hinderliter AL, et al. 2012 ACCF/AHA/ACP/AATS/

- PCNA/SCAI/STS guideline for the diagnosis and management of patients with stable ischemic heart disease: a report of the American College of Cardiology Foundation/American Heart Association Task Force on Practice Guidelines, and the American College of Physicians, American Association for Thoracic Surgery, Preventive Cardiovascular Nurses Association, Society for Cardiovascular Angiography and Interventions, and Society of Thoracic Surgeons. *J Am Coll Cardiol*. 2012;60(24):e44–164.
11. Ziada KM, Powers ER. Drug-eluting stents or bypass surgery for left main disease: the impact of diabetes mellitus. *J Am Heart Assoc*. 2020;9(8):e016457.
  12. Wang H, Wang H, Wei Y, Li X, Jhummun V, Ahmed MA. Ten-year outcomes of percutaneous coronary intervention versus coronary artery bypass grafting for patients with type 2 diabetes mellitus suffering from left main coronary disease: a meta-analysis. *Diabetes Ther*. 2021;12(4):1041–54.
  13. Page MJ, Moher D, Bossuyt PM, Boutron I, Hoffmann TC, Mulrow CD, Shamseer L, Tetzlaff JM, Akl EA, Brennan SE, et al. PRISMA 2020 explanation and elaboration: updated guidance and exemplars for reporting systematic reviews. *BMJ*. 2021;372:n160.
  14. Iqbal J, Gunn J, Serruys PW. Coronary stents: historical development, current status and future directions. *Br Med Bull*. 2013;106:193–211.
  15. Zhang XL, Zhu QQ, Yang JJ, Chen YH, Li Y, Zhu SH, Xie J, Wang L, Kang LN, Xu B. Percutaneous intervention versus coronary artery bypass graft surgery in left main coronary artery stenosis: a systematic review and meta-analysis. *BMC Med*. 2017;15(1):84.
  16. Sterne JAC, Savovic J, Page MJ, Elbers RG, Blencowe NS, Boutron I, Cates CJ, Cheng HY, Corbett MS, Eldridge SM, et al. RoB 2: a revised tool for assessing risk of bias in randomised trials. *BMJ*. 2019;366:l4898.
  17. Sterne JA, Hernan MA, Reeves BC, Savovic J, Berkman ND, Viswanathan M, Henry D, Altman DG, Ansari MT, Boutron I, et al. ROBINS-I: a tool for assessing risk of bias in non-randomised studies of interventions. *BMJ*. 2016;355:i4919.
  18. VanderWeele TJ. Optimal approximate conversions of odds ratios and hazard ratios to risk ratios. *Biometrics*. 2020;76(3):746–52.
  19. Higgins JP, Thompson SG. Quantifying heterogeneity in a meta-analysis. *Stat Med*. 2002;21(11):1539–58.
  20. Sterne JA, Sutton AJ, Ioannidis JP, Terrin N, Jones DR, Lau J, Carpenter J, Rucker G, Harbord RM, Schmid CH, et al. Recommendations for examining and interpreting funnel plot asymmetry in meta-analyses of randomised controlled trials. *BMJ*. 2011;343:d4002.
  21. Sterne JGD, Egger M. Publication and related bias in meta-analysis: Power of statistical tests and prevalence in the literature. *J Clin Epidemiol*. 2000;53:1119–29.
  22. Wan X, Wang W, Liu J, Tong T. Estimating the sample mean and standard deviation from the sample size, median, range and/or interquartile range. *BMC Med Res Methodol*. 2014;14(135):1–13.
  23. Milojevic M, Serruys PW, Sabik JF 3rd, Kandzari DE, Schampaert E, van Boven AJ, Horkay F, Ungi I, Mansour S, Banning AP, et al. Bypass surgery or stenting for left main coronary artery disease in patients with diabetes. *J Am Coll Cardiol*. 2019;73(13):1616–28.
  24. Zhao X, Zhou Y, Song H, Guan L, Zheng G, Jin Z, Shi D, Li Y, Guo Y, Shi GP, et al. Comparison of bypass surgery with drug-eluting stents in diabetic patients with left main coronary stenosis. *Yonsei Med J*. 2011;52(6):923–32.
  25. Meliga E, De Benedictis M, Chieffo A, Latib A, Park SJ, Kim YH, Onuma Y, Capranzano P, Jegere S, Makkar R, et al. Coronary artery bypass graft versus percutaneous coronary intervention with drug-eluting stent implantation for diabetic patients with unprotected left main coronary artery disease: the D-DELTA registry. *EuroIntervention*. 2013;9(7):803–8.
  26. Yu X, He J, Luo Y, Yuan F, Song X, Gao Y, Li Q, Huang F, Gu C, Lv S, et al. Influence of diabetes mellitus on long-term outcomes of patients with unprotected left main coronary artery disease treated with either drug-eluting stents or coronary artery bypass grafting. *Int Heart J*. 2015;56(1):43–8.
  27. Zheng Z, Xu B, Zhang H, Guan C, Xian Y, Zhao Y, Fan H, Yang Y, Wang W, Gao R, et al. Coronary artery bypass graft surgery and percutaneous coronary interventions in patients with unprotected left main coronary artery disease. *JACC Cardiovasc Interv*. 2016;9(11):1102–11.
  28. Lee PH, Lee JY, Lee CW, Han S, Ahn JM, Park DW, Kang SJ, Lee SW, Kim YH, Park SW, et al. Long-term outcomes of bypass grafting versus drug-eluting stenting for left main coronary artery disease: results from the IRIS-MAIN registry. *Am Heart J*. 2017;193:76–83.
  29. Lee K, Ahn JM, Yoon YH, Kang DY, Park SY, Ko E, Park H, Cho SC, Park S, Kim TO, et al. Long-term (10-year) outcomes of stenting or bypass surgery for left main coronary artery disease in patients with and without diabetes mellitus. *J Am Heart Assoc*. 2020;9(8):e015372.
  30. Ben-Gal Y, Moshkovitz Y, Neshar N, Uretzky G, Braunstein R, Hendler A, Zivi E, Herz I, Mohr R. Drug-eluting stents versus coronary artery bypass grafting in patients with diabetes mellitus. *Ann Thorac Surg*. 2006;82(5):1692–7.
  31. Brookes ST, Whitley E, Egger M, Smith GD, Mulheran PA, Peters TJ. Subgroup analyses in randomized trials: risks of subgroup-specific analyses; power and sample size for the interaction test. *J Clin Epidemiol*. 2004;57(3):229–36.
  32. Ledru F, Ducimetière P, Battaglia S, Courbon D, Beverelli F, Guize L, Guermontprez J-L, Diébold B. New diagnostic criteria for diabetes and coronary artery disease: insights from an angiographic study. *J Am Coll Cardiol*. 2001;37(6):1543–50.
  33. Moreno P, Murcia A, Palacios I, Leon M, Bernardi V, Fuster V, Fallon J. Coronary composition and macrophage infiltration in atherectomy specimens from patients with diabetes mellitus. *Circulation*. 2000;102(18):2180–4.
  34. Mak K, Faxon D. Clinical studies on coronary revascularization in patients with type 2 diabetes. *Eur Heart J*. 2003;24(12):1087–103.
  35. Mohr FW, Morice MC, Kappetein AP, Feldman TE, Stähle E, Colombo A, Mack MJ, Holmes DR Jr, Morel MA, Van Dyck N, et al. Coronary artery bypass graft surgery versus percutaneous coronary intervention in patients with three-vessel disease and left main coronary disease: 5-year follow-up of the randomised, clinical SYNTAX trial. *The Lancet*. 2013;381(9867):629–38.
  36. Thuijs DJFM, Kappetein AP, Serruys PW, Mohr FW, Morice MC, Mack MJ, Holmes DR, Curzen N, Davierwala P, Noack T, et al. Percutaneous coronary intervention versus coronary artery bypass grafting in patients with three-vessel or left main coronary artery disease: 10-year follow-up of the multicentre randomised controlled SYNTAX trial. *The Lancet*. 2019;394(10206):1325–34.
  37. Head SJ, Milojevic M, Daemen J, Ahn JM, Boersma E, Christiansen EH, Domanski MJ, Farkouh ME, Flather M, Fuster V, et al. Mortality after coronary artery bypass grafting versus percutaneous coronary intervention with stenting for coronary artery disease: a pooled analysis of individual patient data. *Lancet*. 2018;391(10124):939–48.
  38. Thuijs D, Kappetein AP, Serruys PW, Mohr FW, Morice MC, Mack MJ, Holmes DR Jr, Curzen N, Davierwala P, Noack T, et al. Percutaneous coronary intervention versus coronary artery bypass grafting in patients with three-vessel or left main coronary artery disease: 10-year follow-up of the multicentre randomised controlled SYNTAX trial. *Lancet*. 2019;394(10206):1325–34.
  39. Mohr FW, Morice MC, Kappetein AP, Feldman TE, Stähle E, Colombo A, Mack MJ, Holmes DR Jr, Morel MA, Van Dyck N, et al. Coronary artery bypass graft surgery versus percutaneous coronary intervention in patients with three-vessel disease and left main coronary disease: 5-year follow-up of the randomised, clinical SYNTAX trial. *Lancet*. 2013;381(9867):629–38.
  40. Serruys PW, Morice MC, Kappetein AP, Colombo A, Holmes DR, Mack MJ, Stähle E, Feldman TE, van den Brand M, Bass EJ, et al. Percutaneous coronary intervention versus coronary-artery bypass grafting for severe coronary artery disease. *N Engl J Med*. 2009;360(10):961–72.
  41. McNulty EJ, Ng W, Spertus JA, Zaroff JG, Yeh RW, Ren XM, Lundstrom RJ. Surgical candidacy and selection biases in nonemergent left main stenting: implications for observational studies. *JACC Cardiovasc Interv*. 2011;4(9):1020–7.
  42. Lamelas P, Belardi J, Whitlock R, Stone GW. Limitations of repeat revascularization as an outcome measure: JACC review topic of the week. *J Am Coll Cardiol*. 2019;74(25):3164–73.
  43. Royston P, Parmar M. Restricted mean survival time: an alternative to the hazard ratio for the design and analysis of randomized trials with a time-to-event outcome. *BMC Med Res Methodol*. 2013;13(152):1–15.

## Publisher's Note

Springer Nature remains neutral with regard to jurisdictional claims in published maps and institutional affiliations.