



Article

Investigation of Indoor Air Quality in Houses of Macedonia

Silvia Vilčeková ^{1,*}, Ilija Zoran Apostoloski ¹, Ludmila Mečiarová ¹, Eva Krídlová Burdová ¹ and Jozef Kiseľák ²

¹ Institute of Environmental Engineering, Faculty of Civil Engineering, Technical University of Košice, Vysokoškolská 4, 04200 Košice, Slovakia; eko-inzenering@t-home.mk (I.Z.A.); ludmila.meciarova@tuke.sk (L.M.); eva.kridlova.burdova@tuke.sk (E.K.B.)

² Institute of Mathematics, Faculty of Science, Pavol Jozef Šafárik University in Košice, Jesenná 5, 04001 Košice, Slovakia; jozef.kiselak@upjs.sk

* Correspondence: silvia.vilcekova@tuke.sk; Tel.: +421-55-602-4260

Academic Editors: Alessandra Cincinelli and Tania Martellini

Received: 27 September 2016; Accepted: 19 December 2016; Published: 1 January 2017

Abstract: People who live in buildings are exposed to harmful effects of indoor air pollution for many years. Therefore, our research is aimed to investigate the indoor air quality in family houses. The measurements of indoor air temperature, relative humidity, total volatile organic compounds (TVOC), particulate matters (PM) and sound pressure level were carried out in 25 houses in several cities of the Republic of Macedonia. Mean values of indoor air temperature and relative humidity ranged from 18.9 °C to 25.6 °C and from 34.1% to 68.0%, respectively. With regard to TVOC, it can be stated that excessive occurrence was recorded. Mean values ranged from 50 µg/m³ to 2610 µg/m³. Recommended value (200 µg/m³) for human exposure to TVOC was exceeded in 32% of houses. Mean concentrations of PM_{2.5} (particular matter with diameter less than 2.5 µm) and PM₁₀ (diameter less than 10 µm) are determined to be from 16.80 µg/m³ to 30.70 µg/m³ and from 38.30 µg/m³ to 74.60 µg/m³ individually. Mean values of sound pressure level ranged from 29.8 dB(A) to 50.6 dB(A). Dependence between characteristics of buildings (Year of construction, Year of renovation, Smoke and Heating system) and data from measurements (Temperature, Relative humidity, TVOC, PM_{2.5} and PM₁₀) were analyzed using R software. Van der Waerden test shows dependence of Smoke on TVOC and PM_{2.5}. Permutational multivariate analysis of variance shows the effect of interaction of Renovation and Smoke.

Keywords: family house; temperature; humidity; TVOC; PM; sound pressure level; statistical analysis

1. Introduction

Indoor environmental quality (IEQ) is an essential condition to establish a healthy housing environment [1] and is crucially linked to occupant' health and well-being [2]. Human beings have endeavored to create indoor environments in which they can feel comfortable. Human health is foremost when it comes to assessing the overall comfort of the environment. If the built environment is leading to sickness or negative impact on the occupant' health for any reason then it could lead to some design or technical flaw in the building system [3]. Building structures are linked with a range of health hazard, such as those attributable to extreme temperatures, indoor air pollution, noise, airborne infectious diseases or mold contamination [4]. Today, there is no secret that long-term as well as short-term exposure to PM_{2.5} has been associated with increased respiratory and cardiovascular morbidity [5]. Study [6] showed that major contributor to total indoor volatile organic compounds in residences were households products, followed by combustion processes and environmental tobacco smoke, deodorizers and off-gassing of building materials. These chemicals can cause irritation of eyes

or nose, dizziness, nausea, headaches and allergic reactions and some of them are carcinogenic [7,8]. Deng et al. [9] revealed that exposure to new furniture and home redecoration during pregnancy significantly increased childhood asthma. The knowledge of IEQ is useful for rehabilitation of buildings. It can indicate areas which require improvement in measures of the parameters which affect the indoor environment [10]. Nowadays many investigations are interested in the link between indoor environmental parameters, health effects and the well-being of the occupants as well as the implementation of sustainable practices in the building' design and operation. Zaleska-Jonsson and Wilhelmsson [11] found that generally satisfaction with air quality has the highest impact on occupants' overall satisfaction. Study [12] states that environmental factors such as thermal comfort, indoor air quality, aural and visual environments have notable combination of effects on the occupant' acceptability and work performance. Further study [13] shows that a good understanding of IEQ issues in naturally ventilated buildings and the association with urban microclimate is fundamental for improving their IEQ. All over the world research teams investigate IEQ to find the main sources of pollution, to avoid indoor air pollution by designing optimal measures in existing building and by designing materials and furniture with zero emission; thus, ensuring high quality of indoor living conditions. Study [14] assesses IEQ in existing multi-family buildings in North–East Europe. Sixteen existing multi-family buildings (94 apartments) in Finland and 20 (96 apartments) in Lithuania were investigated prior to their renovation in order to assess the potential for improving IEQ along with energy efficiency. Data on temperature, relative humidity, CO₂, CO, particulate matter, NO₂, formaldehyde, volatile organic compounds, radon, and microbial content in settled dust were collected from each apartment. Results show substantial differences in indoor environmental conditions which were observed between the two countries. According to the research work [15], which was conducted in 32 typical residential apartments in Hong Kong, the investigated factors such as operative temperature, CO₂ concentration, equivalent noise level and illumination level all had important effects on the overall IEQ acceptance. Thermal and aural environmental qualities were deemed the most important contributors, whereas indoor air quality was considered the least important. Another survey [16] was performed with a sample of 482 residents in high-rise residential buildings to investigate the impact of aspects of IEQ on occupant's overall environmental satisfaction (OES). Results show that most of the items had significant impact on the occupant' feelings regarding sub-factors. Adaptive behavior of the shading and lighting effect, the luminous comfort significantly and actively intensifies the mental stress; this has influence on the acoustic comfort the most. The study [17] summarizes the results of IAQ study over the following key findings: (a) negative relationship between the flat' age and the selected indoor air pollutants; (b) combustion and cooking activities affect multiple types including CO, CO₂, NO₂, H₂O and particles, and (c) no single activity emerges that controls indoor air quality. The study [18] concludes that a general decrease in indoor TVOC concentrations may be caused by the age difference of the buildings. Besides, it suggests that concentrations of TVOC tend to be lower in more recently built homes. According to many researches concentrated on health effects they cause serious problems. Review [19] focused on a summarized existing epidemiological evidence of the association between quantitative estimates of indoor air pollution with early childhood respiratory diseases; stated association between domestic exposure to VOCs and asthma in young children. Another study [20] states that adjusted odds ratio per 100 ppb increase in indoor TVOCs were slightly significant for upper respiratory syndrome, stuffy nose, dry throat and lower respiratory syndrome, non-specific syndrome, tiredness, anger and dizziness. Finally, the study [21] states that if a building is designed and constructed to be run, operated and occupied by people, then the requirements for their occupancy must be made as a prerequisite for their comfort. So, the significance of sustaining better IEQ in buildings should be a concern for both planners and managers of the built environment. It can be said as the study [22] notes that many of today' sustainable building designs take the issue of IEQ.

The aim of the presented study is to analyze the indoor air quality of selected houses in Prilep, Macedonia. Indoor air factors such as indoor air temperature, relative humidity, total volatile organic compounds, particulate matters and sound pressure level were measured in 25 houses. The main

contribution of the study is underlining the level of IAQ as well as finding dependence between building characteristics and measured indoor environmental parameters.

2. Materials and Methods

2.1. Selection of Objects

The research object is 25 homes situated in the Republic of Macedonia. Houses included in the IAQ study were selected from the area of south-western part of the Republic of Macedonia about 120 km from Skopje, in town Prilep. The details of the houses are shown in the Table 1.

Table 1. Basic information about investigated houses.

House	Year of Construction	Year of Renovation/ Heating System Changing	Living Room Area (m ²)	Number of Inhabitants	Smoke	Heating System	Floor
1	1990	2007/2015	56	4	Y	CS—pellets	First
2	1990	2007/2015	33	2	N	CS—pellets	Ground
3	1980	-	30	4	Y	CS—wood	First
4	1980	-	18	2	N	CS—wood	Ground
5	1963	-	22	2	Y	WS	Ground
6	1965	-	18	4	N	EE	Fourth
7	1960	-	28	1	Y	EE	First
8	2005	-	45	4	N	HP	First
9	2005	-	40	4	N	HP	First
10	1970	-	27	4	Y	EE	Third
11	1967	-	34	4	N	EE and WS	First
12	1978	2013/-	27	4	N	CS—wood	First
13	1985	2003/-	24	2	N	EE	First
14	1985	2003/-	38	4	Y	EE and WS	Ground
15	1964	-	17	5	N	EE	Fourth
16	1975	-	35	2	Y	EE	First
17	1975	-	28	4	Y	CS—wood	First
18	1978	-	34	3	N	CS—pellets	First
19	1978	-	18	2	N	CS—pellets	Ground
20	1978	-	34	4	N	CS—wood	First
21	1978	-	18	2	Y	CS—wood	Ground
22	1982	-	26	4	N	CS—wood	First
23	1968	-	19	3	Y	EE	First
24	1972	2000/-	28	4	Y	CS—pellets	Second
25	1972	2000/-	20	1	N	CS—pellets	First

CS, Central System; Y, yes; N, no; EE, Electric Energy; WS, Wood Stove; HP, Heat Pump.

Selecting of activities which were considered in statistical analysis related with occurrence of indoor air pollutants. There are scientific evidence that smoking has impact to occurrence of particulate matters and VOCs (e.g., benzene, ethylbenzene, and styrene) [23–26]. Renovation (thermal insulation of buildings) and year of construction affects indoor air temperature and relative humidity as well as concentrations of pollutants [27]. Concentrations of particulate matters can be also influenced by type of heating system [28,29]. The following building characteristics were chosen for the analysis: type of building—single-family houses and apartments in multi-family buildings; age of the building (construction finished in years from 1960 to 2005); renovation, smoking, and heating system.

2.2. Measurements of Indoor Air Quality Factors

Indoor air temperature, relative humidity, sound pressure level, particulate matters and total volatile organic compounds were measured in the selected family houses in the period from December 2012 until March 2013. In this period, the outside air temperature was in the range of $-10\text{ }^{\circ}\text{C}$ to $10\text{ }^{\circ}\text{C}$ and the external humidity from 30% to 79%.

Indoor air temperature and relative humidity were measured by a temperature and humidity meter (Table 2, No. 1–2).

Table 2. Data about instruments used during IAQ monitoring.

No.	Measuring Instrument	Model	Technical Data
1	Temperature meter	AR847	Temperature: -10 – $+50$ °C, accuracy: ± 1 °C
2	Humidity meter	AR847	Humidity: 5% RH–98% RH, accuracy: $\pm 3.5\%$ RH
3	TVOC gas detector	KT603	detection range: 0–2000 ppm, resolution: 1000 ppb accuracy: $\leq \pm 3\%$
4	Nephelometer	TURNKEY DustMate kit	PM ₁ ; PM _{2.5} ; PM ₁₀ ; TSP measuring range: 0–6000 mg/m ³ accuracy: ± 0.01 mg/m ³
5	Sound level meter	SL-5868P	noise: 30–130 dB frequency from 20 to 12,500 Hz accuracy: ± 1 dB

Total volatile organic compounds were measured with gas detector used advanced PID (photoionization detector) sensor. Gas detector can continuous detect aromatic hydrocarbons, unsaturated hydrocarbons, ketones, alcohols as well as aldehydes (Table 2, No. 3).

Particulate matters were measured by the nephelometer, which continuously indicates the concentration of thoracic, inhalable and respirable particles down to $0.1 \mu\text{g}/\text{m}^3$. In environmental mode, it indicates TSP, PM₁₀, PM_{2.5} and PM₁ concentrations. A pump continuously draws an air sample through the nephelometer which analyses the individual particles as they pass through a laser beam (Table 2, No. 4).

Noise level was determined by using sound level meter (Table 2, No. 5).

The data from all the instruments was downloaded to a computer for further analysis. During the measurements all of the instruments were placed approximately in the middle of the living room in the height of 1.1 m above the floor. The measurement lasted for 1 hour and 30 min during normal operation of the building. Each measurement was repeated three times. Living rooms were selected as reference rooms because building users spend substantial part of day in these spaces. The doors and the windows were closed throughout the measurement. More data concerning the instruments used is shown in Table 2.

2.3. Statistical Analyses

Characteristics of buildings (Year of construction, Year of renovation, Smoke and Heating system) and data from measurements (Temperature, Relative humidity, TVOC, PM_{2.5} and PM₁₀) were used for statistical analysis using R software (R Foundation for Statistical Computing, Vienna, Austria, version 3.2.5) [30]. Since Normality property is violated we focused on nonparametric methods. Permutational multivariate analysis of variance (PERMANOVA, [31]) was used for multivariate analysis to determine the impact of continuous and categorical factors on measurements. To test null hypothesis (“The centroids of the groups, as defined in the space of the chosen resemblance measure, are equivalent for all groups.”), a pseudo-F-statistic, modelled on the classical F-statistic used in classical Analysis of variance (ANOVA), is constructed directly from the dissimilarity values in the matrix [32]. Important fact is that PERMANOVA is quite robust to correlations and heterogeneous variances. The PERMANOVA used the “adonis” procedure in the vegan package [33]. Ordinations were plotted with non-metric multidimensional scaling (NMDS) [34]; using the default settings of vegan’ “metaMDS” procedure and “ordiellipse”, which adds ellipses enclosing all points in the group (ellipsoid hulls) or ellipses of standard deviation, standard error or confidence areas. This allows us to visualize the level of similarity of individual cases of a dataset. It uses adequate dissimilarity measures, whereas standard distance on real line was chosen. Consequently, Van der Waerden normal scores test in the PMCMR package was used for univariate cases [35]. The advantage of the Van Der Waerden test is that it provides the high efficiency of the standard ANOVA analysis when the normality assumptions are in fact satisfied, but it also provides the robustness of the Kruskal-Wallis test when the normality assumptions are not satisfied.

3. Results and Discussion

The following table (Table 3) and figures (Figures 1–3) present the results from the investigated indoor climate parameters. The bottom and the top of the boxes represent 25 and 75 percent and the band near the middle of the box is the median.

Table 3. Total volatile organic compounds.

House	Mean ($\mu\text{g}/\text{m}^3$)	Standard Deviation	Min ($\mu\text{g}/\text{m}^3$)	Max ($\mu\text{g}/\text{m}^3$)	Median ($\mu\text{g}/\text{m}^3$)	25.Percentil ($\mu\text{g}/\text{m}^3$)	75.Percentil ($\mu\text{g}/\text{m}^3$)
1	88	0.03	85	94	86	85	91
2	70	0.01	69	72	71	69	72
3	206	0.05	200	210	210	200	210
4	109	0.03	100	110	110	110	110
5	789	0.06	780	800	790	785	790
6	50	0.00	49	50	50	50	50
7	360	0.00	360	360	360	360	360
8	80	0.00	79	80	80	79	80
9	110	0.00	110	111	110	110	111
10	2610	0.00	2610	2610	2610	2610	2610
11	90	0.00	90	91	90	90	91
12	100	0.00	100	101	100	100	101
13	100	0.00	100	101	100	100	101
14	340	0.00	340	340	340	340	340
15	180	0.00	180	181	180	180	181
16	200	0.00	199	200	200	200	200
17	480	0.00	480	481	480	480	481
18	150	0.00	149	150	150	150	150
19	99	0.01	98	100	99	99	100
20	59	0.01	58	60	59	59	60
21	2580	0.00	2580	2581	2580	2580	2580
22	69	0.01	68	70	70	69	70
23	650	0.00	650	650	650	650	650
24	120	0.00	119	120	120	119	120
25	109	0.00	109	110	109	109	110

3.1. Temperature and Relative Humidity

The mean indoor air temperature ranges from 19.3 °C to 25.6 °C in single family houses and from 18.9 °C to 25.1 °C in apartments. Standard deviation (S.D.) ranges from 0.4 to 1.0. Similar values were found in study [18]. The mean indoor temperature set of 157 single-family houses and 148 apartments was found to be 21.4 °C and 22.5 °C, respectively. This study also points out that the values decrease in the single-family houses than in apartments which may have been caused by building characteristics (e.g., less exposed facades, sharing internal walls in case of apartments) but also by the occupant's behavior related to the selection of the heating set-point (e.g., the elderly living mainly in apartments prefer slightly higher temperatures). Such conclusions can be deductive for our study. Because it is not possible to say whether higher or lower values of temperature were achieved in renovated or non-renovated houses.

In our study the mean relative humidity ranges from 36.0% to 64.0% in single family houses and from 34.1% to 68.0% in apartments. Standard deviation ranges from 0.3 to 1.4. According to study [18] the mean relative humidity was higher in the single-family houses than in the apartments (34% vs. 31%). These values correspond with the required range of 30%–70%.

3.2. Total Volatile Organic Compounds

In Table 3, there are TVOC concentrations measured in the selected houses. As can be seen, the mean values of TVOC concentrations ranged from 50 $\mu\text{g}/\text{m}^3$ to 2610 $\mu\text{g}/\text{m}^3$. The lowest mean

level ($50 \mu\text{g}/\text{m}^3$) was measured in house (House 6) with a maximum mean relative humidity. The recommended value ($200 \mu\text{g}/\text{m}^3$) [36] for human exposure to TVOC was exceeded in 32% of all houses. However in 73% of houses with allowed smoking were observed with very high concentrations ranged from 206 to $2610 \mu\text{g}/\text{m}^3$. Study [37] ascertains that in the pre-occupancy stage, the median TVOC levels were low in two houses (less than $150 \mu\text{g}/\text{m}^3$) and high in the other houses (between 500 and more than $3000 \mu\text{g}/\text{m}^3$). In study [38] the indoor total VOC levels were fairly low ($1283 \mu\text{g}/\text{m}^3$) compared to other studies ($210\text{--}6000 \mu\text{g}/\text{m}^3$) [39]. As noted above the 157 single-family houses and 148 apartments were monitored from the occurrence of TVOC concentrations too [18]. The mean TVOC concentration in single family houses was higher ($306 \mu\text{g}/\text{m}^3$) than in apartments ($174 \mu\text{g}/\text{m}^3$). This study takes a note that a previous study [40] conducted more than ten years ago found higher concentrations of $388 \mu\text{g}/\text{m}^3$ in single-family houses and $317 \mu\text{g}/\text{m}^3$ in apartments. Very high levels of TVOC concentrations in family houses were recorded in our study.

3.3. Particulate Matters

Box plot of $\text{PM}_{2.5}$ concentrations in selected houses is shown in Figure 1. Mean concentrations of $\text{PM}_{2.5}$ ranged from $16.80 \mu\text{g}/\text{m}^3$ to $30.70 \mu\text{g}/\text{m}^3$. Similar results to our observation were ascertained in study [37], in which the mass concentrations of $\text{PM}_{2.5}$ were always below $30 \mu\text{g}/\text{m}^3$ and ranged from 6 to $28 \mu\text{g}/\text{m}^3$. Escobedo et al (2014) [41] found that the houses using natural gas for cooking had average 24 h indoor concentration of $8.0 \mu\text{g}/\text{m}^3$ for $\text{PM}_{2.5}$. Households using electricity had corresponding value of $4.7 \mu\text{g}/\text{m}^3$. This study confirms that only the homes with an indoor cigarette-smoking event during the two weeks prior to the survey had the highest concentration of $28 \mu\text{g}/\text{m}^3$. The average indoor $\text{PM}_{2.5}$ concentration was determined to be $7.0 \mu\text{g}/\text{m}^3$ [41]. A comprehensive study [42] confirms that indoor pollutants such as cigarette smoking and cooking are a major source of indoor $\text{PM}_{2.5}$ concentration and their impact is much greater than that infiltrated from outside. The following results are gained: (a) smoking led to an increase in the level of indoor concentration to as much as $1280 \mu\text{g}/\text{m}^3$, which took several hours to settle down; (b) indoor concentration in a room subjected to smoking was about 0.6 times higher than that of a control room; (c) cooking activities contributed to the $\text{PM}_{2.5}$ concentration in the kitchen, to a level of $3000 \mu\text{g}/\text{m}^3$ within a short period of time; and (d) human activities such as walking, dressing and sweeping contributed to an increase of indoor concentration by about 33%.

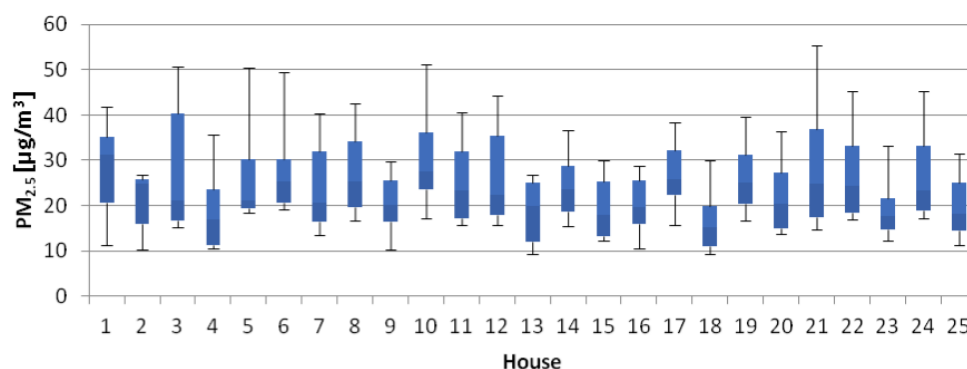


Figure 1. Box plot of $\text{PM}_{2.5}$ concentrations.

Figure 2 is a box plot showing the levels of PM_{10} concentrations. Mean concentrations of PM_{10} ranged from $38.30 \mu\text{g}/\text{m}^3$ to $74.60 \mu\text{g}/\text{m}^3$. Huang et al. (2016) [43] conducted a case-control study with home inspection among 454 children in Shanghai, China. More than 70% of the child' bedrooms had $\leq 75 \mu\text{g}/\text{m}^3$ $\text{PM}_{2.5}$ and $\leq 150 \mu\text{g}/\text{m}^3$ PM_{10} [43]. The results of indoor air quality research in typical temperate zone in Australian homes are introduced in study of Molloy et al. (2012) [17]. This study points out that Summer/Autumn indoor PM_{10} ($22.6 \pm 9.0 \mu\text{g}/\text{m}^3$) was significantly higher than Winter/Spring indoor PM_{10} ($18.3 \pm 6.6 \mu\text{g}/\text{m}^3$). This study also suggests that heating was

significantly correlated with PM₁₀ which may be due to the use of wood heaters in some homes during the Winter/Spring period.

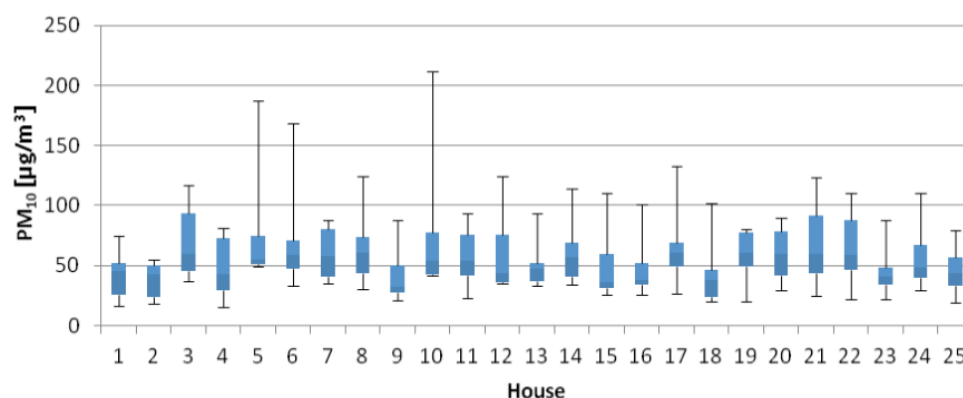


Figure 2. Box plot of PM₁₀ concentrations.

3.4. Noise Level

Figure 3 is a box plot showing the values of sound pressure level. The mean values of sound pressure level ranged from 29.8 dB(A) to 50.6 dB(A). In Macedonia, there are Regulations about the values of noise in working and auxiliary rooms, in that Regulations value is 50 dB(A) [44]. But living rooms noise should be limit value of 40 dB(A) was exceeded.

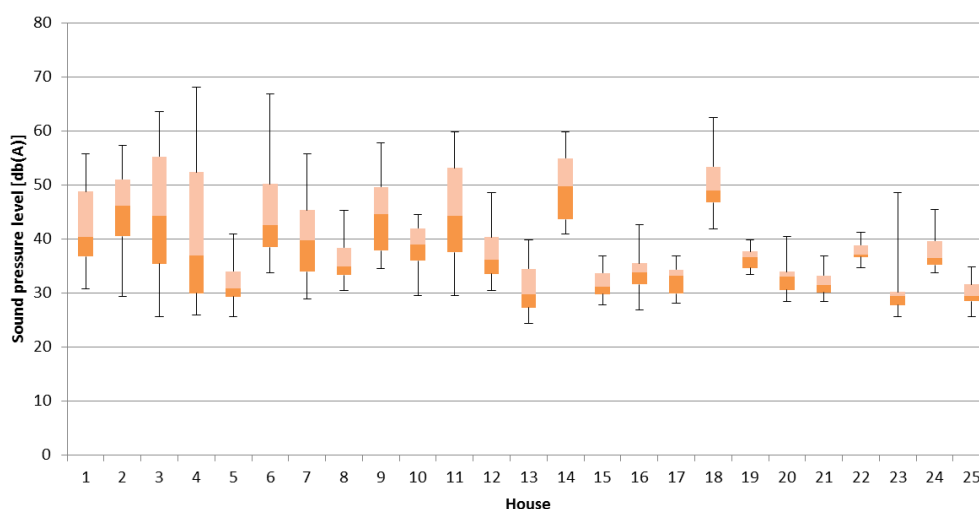


Figure 3. Box plot of sound pressure level.

Study [37] shows that monitored bedrooms were generally the quietest (less than 30–33 dB(A)), except in two houses (up to 48 and 36 dB(A), respectively). Mean noise level in kitchens and drawing rooms was 53.58 and 55.67 dB(A) respectively in rural and urban houses in India [45]. Study of Ryu and Jeon [46] showed that noise sensitivity influenced the annoyance level caused by both indoor and outdoor noise. Bivariate analysis in study of Hammersen et al. (2016) revealed associations between high levels of noise annoyance and impaired mental health for all noise sources except air traffic [47].

3.5. Statistical Analysis

Further advantage of Permutational multivariate analysis of variance is that factor variables can be continuous but categorical as well. It reveals that we cannot conclude factors: Temperature, Relative humidity, Heating system and Year of construction. They have any effect on dependent variable TVOC,

PM_{2.5}, PM₁₀. Table 4 shows the opposite case. Evidently the factor Smoke influences TVOC, PM_{2.5}, and PM₁₀ in the case of multivariate dependence. Nevertheless, Van der Waerden test reveals that we cannot conclude statistical dependence of Smoke on PM₁₀ (similar situation is in other cases), only on TVOC and PM_{2.5} (Table 5).

Significance levels α are indicated with stars (asterisks). If the p -values are less than or equal to the significance level, then the outcome is said to be statistically significant (* significant at $p < 0.05 = \alpha$).

Table 4. Results of permutational multivariate analysis of variance.

Data	R ²	Res. R ²	Pseudo F	p-Value
Smoke and Renovation	0.36528	0.63472	4.0285	0.03398 *
Smoke	0.24212	0.75788	8.0108	0.00050 *
Renovation	0.05880	0.94117	0.1594	0.15940

* significant at $p < 0.05 = \alpha$.

Table 5. Results of the Van der Waerden test for univariate cases.

Data	Van der Waerden Chi-Squared	df	p-Value
TVOC and Smoke	12.31	1	0.00045 *
PM _{2.5} and Smoke	4.17	1	0.04109 *
PM _{2.5} and Renovation	0.10	1	0.75350
PM ₁₀ and Smoke	2.74	1	0.09785
TVOC and Renovation	0.81	1	0.36840
PM ₁₀ and Renovation	3.59	1	0.05832

* significant at $p < 0.05 = \alpha$.

For differences of TVOC and PM_{2.5} we can see it on box plots (Figure 4). In the case of Renovation factor the situation is more complicated. There is no evidence of influence concerning only itself. But PERMANOVA shows us the effect of interaction of Renovation and Smoke. This means hidden dependence. In the Figure 5 of NMDS are obviously two particular groups of houses differentiated by the factor Smoke. Evidently there is an intersection, which confirms previous ideas (interaction). Confidence areas (ellipses) show that we cannot include specific house in exactly one of the groups for 100%, but there is quite high probability to be in the group Smoke/Y.

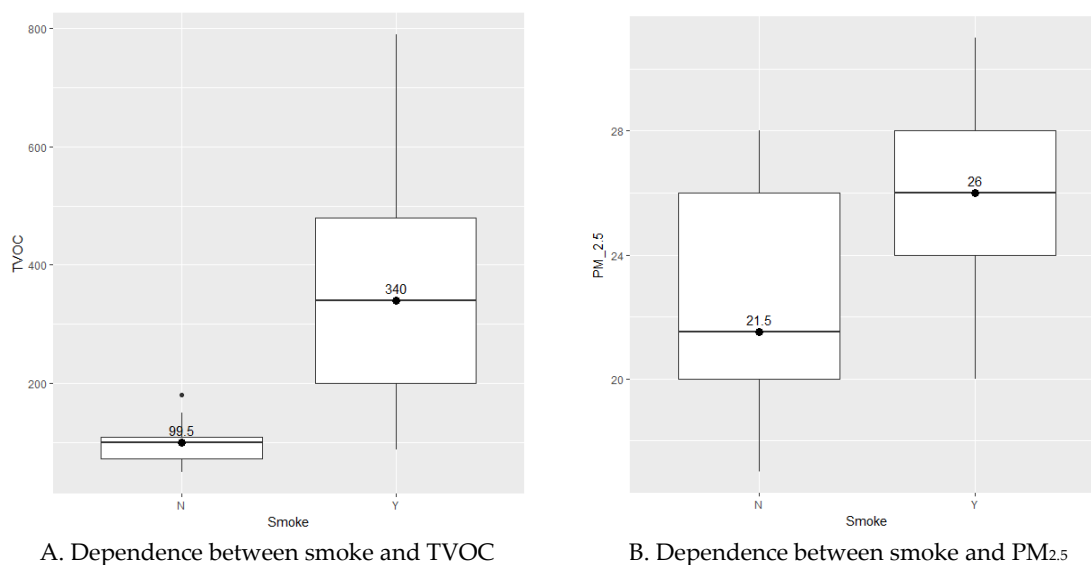


Figure 4. Box plots of significant factor smoke with medians. N, no; Y, yes.

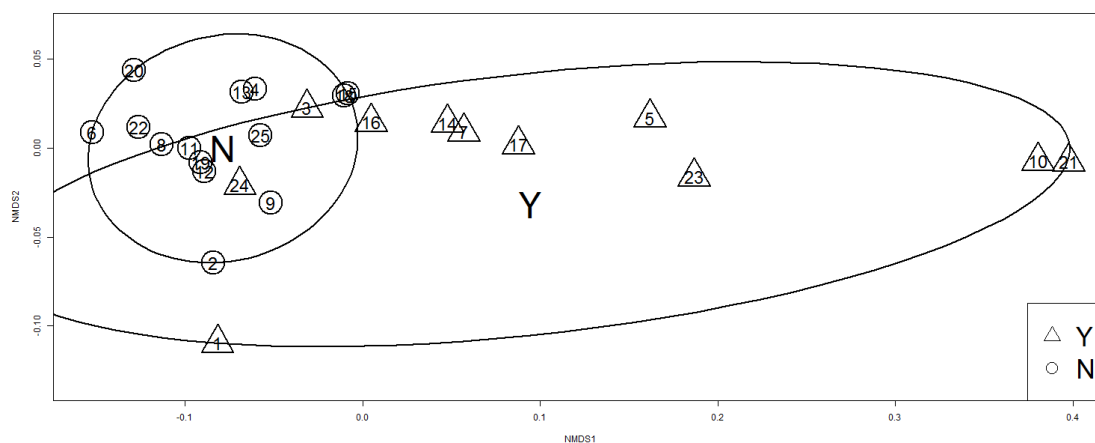


Figure 5. Non-metric multidimensional scaling visualizing the level of similarity for factor smoke. N, no; Y, yes.

4. Conclusions

This study has discussed the indoor air quality in 25 homes in Prilep, Republic of Macedonia during the winter period. Results were compared with other surveys performed over the world. Because of the limited set of houses, the findings cannot be generalized. Our results indicated that indoor relative humidity in homes meets the requirement of 30%–70%. The mean values of sound pressure level were high in most of the houses. The recommended value for TVOC ($200 \mu\text{g}/\text{m}^3$) was exceeded in 32% of houses. Concentrations of PM_{10} were high in 64% of the investigated houses. This study shows that family house users are highly exposed to excessive noise, high concentrations of total volatile organic compounds as well excessive occurrence of particulate matters in the indoor air. The results of the present study are comparable to the results of other studies mentioned above. (Section 3). Some differences are related to different boundary conditions and the chosen methodology for measuring the environmental parameters.

By statistical analysis correlations between smoke and TVOC; smoke and $\text{PM}_{2.5}$ as well as hidden dependence between renovation and smoke were found.

The study confirmed the high concentrations of the environmental parameters. General knowledge of indoor air quality in family houses is often very low and the occupants do not know that exposure to these pollutants has an impact on their health and comfort. Therefore, the indoor air quality needs to be investigated and people need to be informed of the possible health consequences. Long-term measurements of indoor environmental parameters need to be performed in order for these parameters to be generalized. This will be the objective of our future research work.

Acknowledgments: This study was supported by the Grant Agency of the Slovak Republic for the support of project No. 1/0307/16.

Author Contributions: Silvia Vilcekova had the original idea and design of the study; Zoran Apostoloski carried out measurements, Ludmila Meciarova and Jozef Kiselak analyzed data and conducted the statistical analyses. Silvia Vilcekova and Eva Kridlova Burdova interpreted the results, prepared the text and provides critical version of the manuscript, which was revised by all authors. All authors read and approve the final manuscript.

Conflicts of Interest: The authors declare no conflict of interest.

Abbreviations

The following abbreviations are used in this manuscript:

IEQ	Indoor environmental quality
OEQ	Overall Environmental Satisfaction
IAQ	Indoor Air Quality
PM	Particulate Matter
TSP	Total Suspended Particulate Matter

TVOC	Total Volatile Organic Compound
WHO	World Health Organization
RH	Relative Humidity
ppb	Parts Per Billion
R	Permutation of Residuals
F	F-test
P	Significance level
NMDS	Non-metric multidimensional scaling

References

- Lee, T.K.; Kim, J.T. Residents' responses on indoor environment quality and energy use in apartments. *Energy Build.* **2015**, *98*, 34–38. [[CrossRef](#)]
- Nix, E.; Shrubsole, C.; Das, P.; Davies, M. Indoor Environmental Quality of Low-Income Housing in Delhi, India: Findings from a Field Study. *Energy Procedia* **2015**, *78*, 495–500. [[CrossRef](#)]
- Al horr, Y.; Arif, M.; Katalygiotou, M.; Mazroei, A.; Kaushi, A.; Elsarrag, E. Impact of indoor environmental quality on occupant well-being and comfort: A review of the literature. *Int. J. Sust. Built Environ.* **2016**, *5*, 1–11. [[CrossRef](#)]
- Vardoulakis, S.; Dimitroulopoulou, C.; Thornes, J.; Lai, K.; Taylor, J.; Myers, I.; Heaviside, C.; Mavrogianni, A.; Shrubsole, C.; Chalabi, Z. Impact of climate change on the domestic indoor environment and associated health risks in the UK. *Environ. Int.* **2015**, *85*, 299–313. [[CrossRef](#)] [[PubMed](#)]
- Arvanitis, A.; Kotzias, D.; Kephelopoulos, S.; Carrer, P.; Cavallo, D.; Cesaroni, G.; De Brouwere, K.; De Oliveira-Fernandes, E.; Forastiere, F.; Fossati, S.; et al. The Index-PM project: Health risks from exposure to indoor particulate matter. *Fresenius Environ. Bull.* **2010**, *19*, 2458–2471.
- Bari, M.A.; Kindzierski, W.B.; Wheeler, A.J.; Héroux, M.; Wallace, L.A. Source apportionment of indoor and outdoor volatile organic compounds at homes in Edmonton, Canada. *Build. Environ.* **2015**, *90*, 114–124. [[CrossRef](#)]
- Jones, A.P. Indoor air quality and health. *Atmos. Environ.* **1999**, *33*, 4535–4564. [[CrossRef](#)]
- Agents Classified by the IARC Monographs, Volumes 1–117. Available online: <http://monographs.iarc.fr/ENG/Classification/ClassificationsAlphaOrder.pdf> (accessed on 24 October 2016).
- Deng, Q.; Lu, Ch.; Ou, C.; Liu, W. Effects of early life exposure to outdoor air pollution and indoor renovation on childhood asthma in China. *Build. Environ.* **2015**, *93*, 84–91. [[CrossRef](#)]
- Mihai, T.; Iordache, V. Determining the indoor environment quality for an educational building. *Energy Procedia* **2016**, *85*, 566–574. [[CrossRef](#)]
- Zalejska-Jonsson, A.; Wilhelmsson, M. Impact of perceived indoor environment quality on overall satisfaction in Swedish dwellings. *Build. Environ.* **2013**, *63*, 134–144. [[CrossRef](#)]
- Huang, L.; Zhu, Y.; Ouyang, Q.; Cao, B. A study on the effects of thermal, luminous, and acoustic environments on indoor environmental comfort in offices. *Build. Environ.* **2012**, *49*, 304–309. [[CrossRef](#)]
- Ai, Z.T.; Mak, C.M. From street canyon microclimate to indoor environmental quality in naturally ventilated urban buildings: Issues and possibilities for improvement. *Build. Environ.* **2015**, *94*, 489–503. [[CrossRef](#)]
- Du, L.; Prasauskas, T.; Leivo, V.; Turunen, M.; Pekkonen, M.; Kiviste, M.; Aaltonen, A.; Martuzevicius, D.; Haverinen-Shaughnessy, U. Assessment of indoor environmental quality in existing multi-family buildings in North-East Europe. *Environ. Int.* **2015**, *79*, 74–84. [[CrossRef](#)] [[PubMed](#)]
- Lai, A.C.K.; Mui, K.W.; Wong, L.T.; Law, L.Y. An evaluation model for indoor environmental quality (IEQ) acceptance in residential buildings. *Energy Build.* **2009**, *41*, 930–936. [[CrossRef](#)]
- Xue, P.; Mak, C.M.; Ai, Z.T. A structured approach to overall environmental satisfaction in high-rise residential buildings. *Energy Build.* **2016**, *116*, 181–189. [[CrossRef](#)]
- Molloy, S.B.; Cheng, M.; Galbally, I.E.; Keywood, M.D.; Lawson, S.J.; Powell, J.C.; Gillett, R.; Dunne, E.; Selleck, P.W. Indoor air quality in typical temperate zone Australian dwellings. *Atmos. Environ.* **2012**, *54*, 400–407. [[CrossRef](#)]
- Langer, S.; Bekö, G. Indoor air quality in the Swedish housing stock and its dependence on building characteristics. *Build. Environ.* **2013**, *69*, 44–54. [[CrossRef](#)]

19. Patelarou, E.; Tzanakis, N.; Kelly, F.J. Exposure to indoor pollutants and wheeze and asthma development during early childhood. *Int. J. Environ. Res. Public Health* **2015**, *12*, 3993–4017. [[CrossRef](#)] [[PubMed](#)]
20. Lu, C.; Lin, J.; Chen, Y.; Chen, Y. Building-related symptoms among office employees associated with indoor carbon dioxide and total volatile organic compounds. *Int. J. Environ. Res. Public Health* **2015**, *12*, 5833–5845. [[CrossRef](#)] [[PubMed](#)]
21. Nimlyat, P.S.; Kandar, M.Z. Appraisal of indoor environmental quality (IEQ) in healthcare facilities: A literature review. *Sustainable Cities Soc.* **2015**, *17*, 61–68. [[CrossRef](#)]
22. Kubba, S. Chapter 7: Indoor Environmental Quality (IEQ). In *LEED v4 Practices, Certification, and Accreditation Handbook*, 2nd ed.; Elsevier: Waltham, MA, USA, 2016; pp. 303–378.
23. Halios, C.H.; Assimakopoulos, V.D.; Helmis, C.G.; Flocas, H.A. Investigation cigarette-smoke indoor pollution in a controlled environment. *Sci. Total Environ.* **2005**, *337*, 183–190. [[CrossRef](#)] [[PubMed](#)]
24. Mueller, D.; Uibel, S.; Braun, M.; Klingelhofer, D.; Takemura, M.; Groneberg, D.A. Tobacco smoke particles and indoor air quality (ToPIQ)—The protocol of a new study. *J. Occup. Med. Toxicol.* **2011**. [[CrossRef](#)] [[PubMed](#)]
25. Girman, J.R.; Apte, M.G.; Traynor, G.W.; Allen, J.R.; Hollowel, C.D. Pollutant emission rates from indoor combustion appliances and sidestream cigarette smoke. *Environ. Int.* **1982**, *8*, 213–221. [[CrossRef](#)]
26. Polzin, G.M.; Kosa-Maines, R.E.; Ashley, D.L.; Watson, C.H. Analysis of volatile organic compounds in mainstream cigarette smoke. *Environ. Sci. Technol.* **2007**, *41*, 1297–1302. [[CrossRef](#)] [[PubMed](#)]
27. Chin, J.-Y.; Godwin, C.; Parker, E.; Robins, T.; Lewis, T.; Harbin, P.; Batterman, S. Levels and sources of volatile organic compounds in homes of children with asthma. *Indoor Air* **2014**, *24*, 403–415. [[CrossRef](#)] [[PubMed](#)]
28. Owen, M.K.; Ensor, D.S. Airborne particle sizes and sources found in indoor air. *Atmos. Environ.* **1992**, *26*, 2149–2162. [[CrossRef](#)]
29. Ruiz, P.A.; Toro, C.; Cáceres, J.; López, G.; Oyola, P.; Koutrakis, P. Effect of gas and kerosene space heaters on indoor air quality: A study in homes of Santiago, Chile. *J. Air Waste Manag. Assoc.* **2010**, *60*, 98–108. [[CrossRef](#)]
30. The R Project for Statistical Computing. Available online: <http://www.R-project.org> (accessed on 20 October 2016).
31. Anderson, M.J. A new method for non-parametric multivariate analysis of variance. *Austral Ecol.* **2001**, *26*, 32–46.
32. Community Ecology Package. Version 2.4-1. Available online: <https://cran.r-project.org/web/packages/vegan/vegan.pdf> (accessed on 7 September 2016).
33. Kruskal, J.B. Nonmetric multidimensional scaling: A numerical method. *Psychometrika* **1964**, *29*, 115–129. [[CrossRef](#)]
34. Anderson, M.J.; Gorley, R.N.; Clarke, K.R. *PERMANOVA+ for PRIMER: Guide to Software and Statistical Methods*; PRIMER-E Ltd.: Plymouth, UK, 2008.
35. Conover, W.J. *Practical Nonparameteric Statistics*, 3rd ed.; Wiley: New York, NY, USA, 1999; pp. 396–406.
36. Mølhave, L. Volatile organic compounds, indoor air quality and health. In Proceedings of the 5th International Conference on Indoor Air Quality and Climate, Toronto, ON, Canada, 29 July–3 August 1990; pp. 15–33.
37. Derbez, M.; Berthineau, B.; Cochet, V.; Lethrosne, M.; Pignon, C.; Riberon, J.; Kirchner, S. Indoor air quality and comfort in seven newly built, energy-efficient houses in France. *Build. Environ.* **2014**, *72*, 173–187. [[CrossRef](#)]
38. Coombs, K.C.; Chew, G.L.; Schaffer, C.; Ryan, P.H.; Brokamp, C.; Grinshpun, S.A.; Adamkiewicz, G.; Chillrud, S.; Hedman, C.; Colton, M.; et al. Indoor air quality in green-renovated vs. non-green low-income homes of children living in a temperate region of U.S. (Ohio). *Sci. Total Environ.* **2016**. [[CrossRef](#)] [[PubMed](#)]
39. Pickett, A.R.; Bell, M.L. Assessment of indoor air pollution in homes with infants. *Int. J. Environ. Res. Public Health* **2011**. [[CrossRef](#)] [[PubMed](#)]
40. Bornehag, C.G.; Stridh, G. Volatile organic compounds (VOC) in the Swedish housing stock. *Proc. Healthy Build.* **2000**. [[CrossRef](#)]
41. Escobedo, L.E.; Champion, W.M.; Li, N.; Montoya, L.D. Indoor air quality in Latino homes in Boulder, Colorado. *Atmos. Environ.* **2014**, *92*, 69–75. [[CrossRef](#)]

42. Zhou, Z.; Liu, Y.; Yuan, J.; Zuo, J.; Chen, G.; Xu, L.; Rameezdeen, R. Indoor PM_{2.5} concentrations in residential buildings during a severely polluted winter: A case study in Tianjin, China. *Renew. Sustain. Energy Rev.* **2016**, *64*, 372–381. [[CrossRef](#)]
43. Huang, C.; Wang, X.; Liu, W.; Cai, J.; Shen, L.; Zou, Z.; Lu, R.; Chang, J.; Wei, X.; Sun, C.; et al. Household indoor air quality and its associations with childhood asthma in Shanghai, China: On-site inspected methods and preliminary results. *Environ. Res.* **2016**, *151*, 154–167. [[CrossRef](#)] [[PubMed](#)]
44. Official Gazette of Republic of Macedonia No. 21/2008. Available online: <http://www.slvesnik.com.mk/Issues/D24B3DCD1B0C6E4E8BF77FA3A3A7A639.pdf> (accessed on 7 September 2016).
45. Kaur, D.; Sidhu, M.; Bal, S.; Chuneja, N.K. Assessment of indoor pollution in rural and urban houses. *Indian Res. J. Ext. Educ.* **2015**, *15*, 142–148.
46. Ryu, J.K.; Jeon, J.Y. Influence of noise sensitivity on annoyance of indoor and outdoor noises in residential buildings. *Appl. Acoust.* **2011**, *72*, 336–340. [[CrossRef](#)]
47. Hammersen, F.; Niemann, H.; Hoebel, J.E. Environmental noise annoyance and mental health in adults: Findings from the cross-sectional German Health Update (GEDA) Study 2012. *Int. J. Environ. Res. Public Health* **2016**. [[CrossRef](#)] [[PubMed](#)]



© 2017 by the authors; licensee MDPI, Basel, Switzerland. This article is an open access article distributed under the terms and conditions of the Creative Commons Attribution (CC-BY) license (<http://creativecommons.org/licenses/by/4.0/>).