

RESEARCH ARTICLE

Effect of age at initiation of antiretroviral therapy on treatment outcomes; A retrospective cohort study at a large HIV clinic in southwestern Uganda

Peter Ssebutinde^{1,2}, Imelda T. Kyamwanga², Eleanor Turyakira², Stephen Asiimwe^{2,3}, Francis Bajunirwe^{2*}

1 Mbarara District Directorate of Health Services, Mbarara, Uganda, **2** Department of Community Health, Mbarara University of Science and Technology, Mbarara, Uganda, **3** Kabwohe Clinical Research center, Bushenyi, Uganda

* fbaj@yahoo.com



Abstract

Background

The prevalence of HIV infection among older persons is increasing yet older age at initiation of antiretroviral therapy (ART) may be associated with poorer treatment outcomes including mortality. However, majority of these studies have been done in the western world and there is limited data in resource limited settings. Our study used routinely collected health facility data to assess trends in age at initiation of ART, the effect of age at ART initiation on mortality and immunological response at a large urban hospital in south western Uganda.

Methods

We conducted a retrospective records review of patients attending the HIV clinic at Mbarara Regional Referral Hospital in western Uganda. We retrieved records for 8,533 patients who started ART between January 2006 and December 2012. Their data had been collected and stored as part of the larger International Epidemiological Database for the Evaluation of AIDS (IeDEA). Age was stratified into three categories namely; 18–34 (young adults), 35–49 (mid-age) and 50 years or older (older adults). Survival analysis procedures with Kaplan-Meier's plots were used to calculate the survival probability with mortality as the endpoint and Poisson regression analysis used to determine the adjusted relative risks (RR) of mortality.

Results

The proportion of young adults and patients at WHO stage I initiating ART increased steadily over the 7-year period. Older age at ART initiation (≥ 50 years) was associated with a higher risk of mortality with adjusted relative risk (RR) at 1.63, (95% CI 1.26–2.11) compared to younger age. Male gender, WHO stages III and IV, lower CD4 count and lower body mass index were also all independently and significantly associated with higher risk for

OPEN ACCESS

Citation: Ssebutinde P, Kyamwanga IT, Turyakira E, Asiimwe S, Bajunirwe F (2018) Effect of age at initiation of antiretroviral therapy on treatment outcomes; A retrospective cohort study at a large HIV clinic in southwestern Uganda. PLoS ONE 13 (8): e0201898. <https://doi.org/10.1371/journal.pone.0201898>

Editor: Carlo Federico Perno, Università degli Studi di Roma Tor Vergata, ITALY

Received: December 4, 2017

Accepted: July 24, 2018

Published: August 15, 2018

Copyright: © 2018 Ssebutinde et al. This is an open access article distributed under the terms of the [Creative Commons Attribution License](https://creativecommons.org/licenses/by/4.0/), which permits unrestricted use, distribution, and reproduction in any medium, provided the original author and source are credited.

Data Availability Statement: All relevant data are within the paper and its Supporting Information files.

Funding: The authors received no specific funding for this work.

Competing interests: The authors have declared that no competing interests exist.

mortality. Older adults also had a poorer immunological response $RR = 1.79$ (95% CI 0.89–3.58) but was not statistically significant.

Conclusions

Following ART initiation, older adults compared to the young, have a higher risk of mortality. This age group should be targeted first for 'screen and treat' approach. Optimization of ART treatment regimens for this age group is also required to reduce mortality and improve immunological response.

Introduction

The prevalence of HIV infection among persons aged 50 years and over is steadily rising and globally in 2013, an estimated 4.2 million people in this age category were living with HIV/AIDS [1], with the number doubling since 1995. HIV infected patients aged 50 years and over are considered 'elderly'. Almost 60% of them live in sub Saharan Africa. In Uganda, HIV infection among persons aged 50 years and above is increasing and estimated to be about 11.3%, a figure much higher than in the general population where prevalence according to the UNAIDS report [2] of 2013, is at 7.3%.

Mortality of HIV infected persons has significantly reduced in the era of antiretroviral therapy [3, 4]. Antiretroviral therapy (ART) is associated with increased survival among HIV infected patients in both high income [5, 6] and low income settings [7, 8]. The infected persons, regardless of income status of country of residence, can now expect to live to their normal life expectancy especially if care and treatment are initiated in a timely fashion. However, age at initiation of treatment may modify the effect of antiretroviral therapy on the outcomes. Studies to investigate the relationship between age at initiation of ART and treatment outcomes have shown mixed results. Some studies show older age is associated with slower or poorer immunological response and a higher mortality risk compared to the younger ones after ART initiation [9–11], yet others have shown no differences in treatment outcomes among younger and older patients aged more than 50 years [12]. In this study, differences emerged only when analyses considered comparisons with patients in the extreme age groups of above 60 years. Older patients also represent an important subgroup because they are at risk for a delayed HIV diagnosis compared to younger patients [13, 14]. The delay in seeking an HIV test may be due to structural barriers such as stigma [15, 16] or limited access to HIV testing services [17, 18].

Majority of the studies on impact of age on response to ART have been conducted in the developed countries, and to-date fewer studies in the resource limited settings. The few studies in Africa [19, 20] suggest the proportionate mortality rate due to HIV/AIDS among older adults may be higher in low income countries compared to the richer countries. The higher frequency of HIV comorbidities in sub Saharan Africa including Tuberculosis (TB) and other opportunistic infections and parasites may explain the difference. However, the duration of patient follow up in most of these studies was shorter. Therefore, more data from treated HIV cohorts with long term follow up in resource limited settings are necessary to understand the differences in mortality.

Understanding the impact of age at ART initiation on the immunological response and mortality will inform clinical service and assist in making policy and recommendations regarding treatment guidelines for older patients (≥ 50 years). Older patients might require

earlier initiation of treatment if advanced age is associated with poorer response and survival following treatment. The current WHO (2016) treatment guidelines [21] recommend that treatment should be initiated regardless of WHO stage of disease or CD4 count shifting towards a test and treat approach. Given the resource constraint for most countries with a high burden of HIV, it will be difficult to achieve the test and treat for all HIV positives. This data may provide additional evidence to support recommendations for priority in prevention and treatment of older HIV infected patients with ART in the implementation of test and treat.

The prevalence of HIV among older persons is increasing and presenting potential temporal trends in the age distribution of patients at the HIV clinics in sub Saharan Africa. Understanding the temporal trends of age at initiation of ART over an extended period may be used to mirror disease burden or incidence of HIV in the general population. In a mature and generalized epidemic like that in Uganda, it is likely there have been temporal trends in age distribution at initiation of ART. It may be argued that age distribution at initiation of ART may reflect incidence of HIV in the general population, especially if there are no barriers in access to HIV treatment services by certain age groups. The data may shed light on the age groups that are at highest risk for HIV incidence. We used routinely collected data at a large HIV clinic to determine temporal trends in age at ART initiation among these patients, assess the effect of age at ART initiation on mortality and immunological response after initiation of ART.

Methods

Study design

We conducted a retrospective cohort study at a large urban HIV clinic in the south western Ugandan town of Mbarara. The clinic is based within Mbarara Regional Referral Hospital, a teaching hospital for Mbarara University medical school. The clinic was established in 1998 and by December 2012, there were 22,643 cumulative and 9,329 active entries of patients receiving ART.

The retrospective cohort was constructed using routinely collected data at the clinic. The data for analysis was extracted from the International Epidemiological Database to evaluate AIDS (IeDEA) of Mbarara Regional Referral Hospital. The hospital joined the IeDEA network in January 2006, which now exists at 3 other sites in Uganda. Our analysis only uses data from Mbarara Hospital. All patients enrolled in care at the regional referral hospital are entered into this database. Patients initiated on ART before January 2006 were not entered in IeDEA. Therefore, we considered patients initiated on ART from January 1, 2006, when the IeDEA database started to December 31, 2012. We extracted several variables including socio-demographic factors, clinical and laboratory data like CD4 counts, viral load, BMI at initiation of ART, WHO clinical staging, ART start date and ART regimen. Patients in the IeDEA database were eligible for analysis if they were aged ≥ 18 years old, and had initiated ART on or before December 31, 2012.

Laboratory biomarkers such as CD4 counts, Complete Blood Count and Hemoglobin for patients at initiation of ART were collated with the patients' routine follow-up visits information.

Data analysis

The data were cleaned to ensure consistency in the coding of variables and for missing data. Patients with missing age were excluded from the analysis. Patients who were missing other variables were included in the analysis but were automatically excluded in any analysis where the missing variable was involved. No data imputation was done. Ages for patients initiated on ART were stratified in three categories namely; 18 to 34 years (young adults), 35 to 49 years

(mid-age) and ≥ 50 years (older adults). The age categories were considered as the main exposure variable. CD4 change as a predictor was created by obtaining the difference between the most recent and CD4 cell count at ART initiation. The variable CD4 change was broken into 4 categories: CD4 decline, CD4 increase of <100 , CD4 increase of $100-350$ and CD4 increase >350 . Baseline characteristics across the age strata were compared using chi square and those that presented differences were included in the multivariable analysis.

The primary endpoint for this analysis was mortality after initiation of ART and the secondary endpoint was immunologic response. We used Survival analysis to determine the effect of age on mortality using the Kaplan Meier plot and the Log rank test. We report the median survival and the inter quartile range (IQR). Poisson regression analysis was used to determine the rate ratios for effect of age on mortality and immunological response. Immunological response was a secondary outcome and was classified by dichotomizing the most recent CD4 into either CD4 count below 350 or ≥ 350 . The patients with CD4 cell count less than 350 were classified as having a poor immunological outcome. A multi variable analysis was done using Poisson regression modeling with the predictor variables that were considered confounders entered into the model simultaneously, using a cut off of $p < 0.1$ in the bivariate analysis as consideration for inclusion in the multiple regression model. All analyses were completed using STATA version 11 (College Station, TX).

Ethical considerations

The study protocols were approved by the Department of Community Health, the HIV clinic data sharing committee, the Faculty of Medicine Research ethics committee and the Mbarara University of Science and Technology Research Ethics Committee. All the datasets extracted from the IeDEA database were kept under password lock. Data were de-identified and codes instead of names were used and all the information was kept confidential.

Results

Baseline characteristics and temporal trends

A total of 8,364 patients, who initiated ART between January 1, 2006 and December 31, 2012 were eligible and included in the analysis. The summary of the cohort is represented in [Fig 1](#).

Of these, 5,308 (62.2%) were females. The cohort contributed a total of 66,644 person years (PYs) of observation with a median follow up time of 1.5 years (IQR 0.5, 3.9). The median age was 32 years with IQR 27, 39) and the distribution of the age strata were 4,686 (56.0%) young adults (18–34 years), 3,121 (37.3%) middle aged (35–49 years) and 557 (6.7%) patients with age ≥ 50 years. The younger patients were more likely to be female while the older patients were more likely to be male $p = 0.0001$. The distribution of the baseline characteristics among the three age strata is shown in [Table 1](#).

WHO stage, CD4 count at enrollment, body mass index and educational level were significantly different in the three age strata. Occupation and partner HIV status were not different in the three age strata.

The proportion of young adults initiating ART has consistently increased from 42% in 2006 to 62% in 2012. The proportions for the other age groups have either remained stable or decreased ([Fig 2](#)).

Kaplan Meier survival analysis

Overall, 180 (2.1%) patients died. The Kaplan-Meier plot is shown in [Fig 3](#) and the bivariate analysis indicates the older patients (≥ 50 years) had a significantly lower probability of

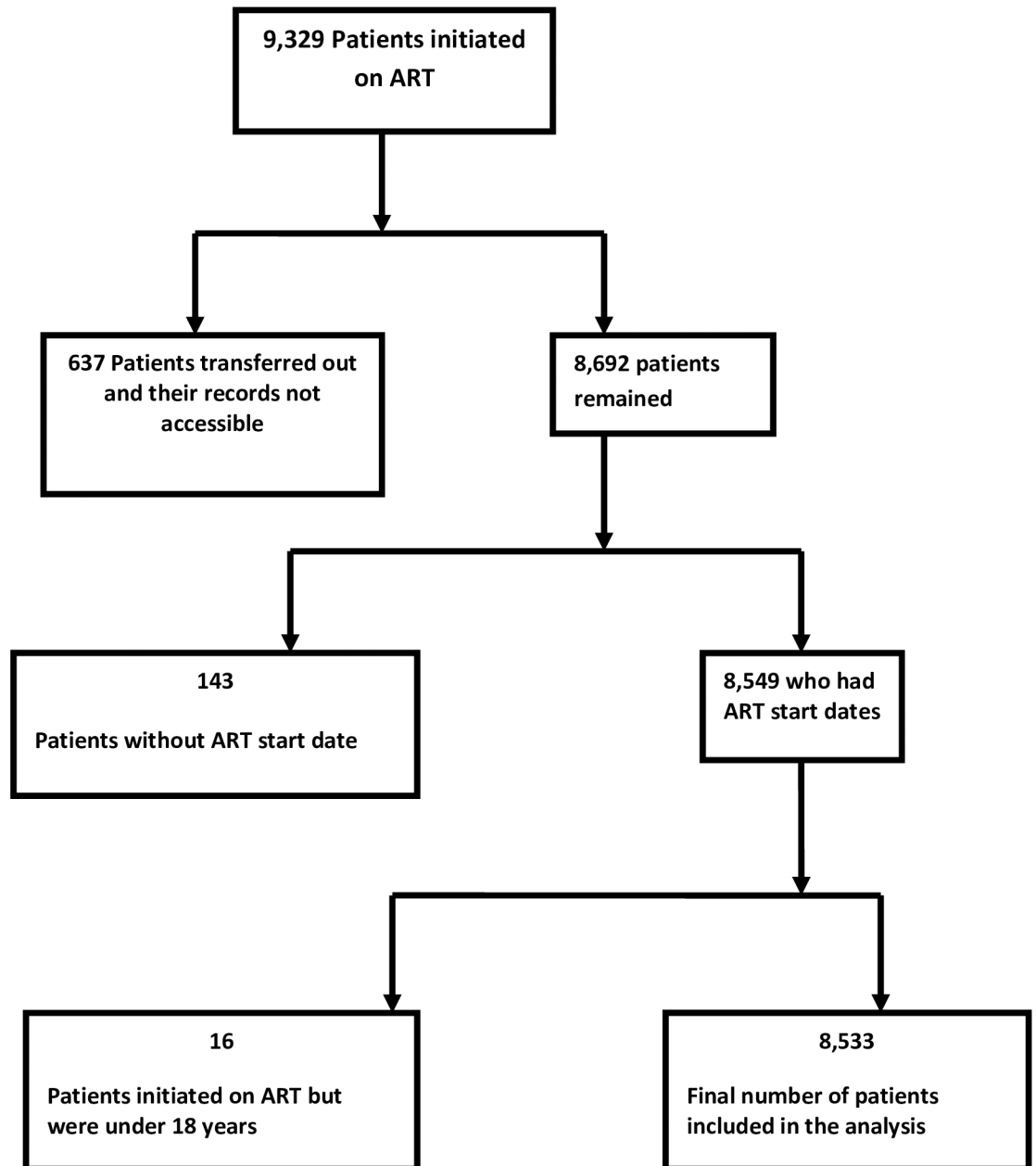


Fig 1. Summary profile of patients enrolled in HIV treatment at Mbarara Regional Referral Hospital, Uganda, 2006–2012.

<https://doi.org/10.1371/journal.pone.0201898.g001>

survival compared to the young (Log rank test $p = 0.0034$). However, the curves for the middle aged and young adults appear superimposed over each other suggesting a lack of difference in mortality and survival in these two age groups.

Table 2 shows the proportion of young adults initiating ART steadily increased from 43.7% in 2006 to 63.7% in 2012 (p value for chi square test for trend = 0.002). Proportion of patients initiating ART with CD4 count over 350 doubled from 6.1% to 13.9% and patients in WHO stage IV decreased from 11.2% to 5.3% over the same period. Gender distribution remained stable with predominantly women at the clinic.

Table 1. Baseline demographic characteristics among three age categories for patients initiated on ART at large HIV clinic (1st January 2006 to 31st December 2012).

Characteristics		Age Categories n (%)			p value
		Young Adults (18–34years)	Middle aged (35–49 years)	Older patients (50years or over)	
Gender (n = 6,556)	Females	2,739 (73.6)	1,259 (52.6)	204 (46.2)	0.0001
	Males	982 (26.4)	1,134 (47.4)	238 (53.8)	
WHO stage (n = 6,284)	I	2,095 (58.9)	1,328 (57.7)	243 (57.5)	0.0001
	II	724 (20.3)	465 (20.2)	185 (20.1)	
	III	638 (17.9)	439 (19.1)	82 (19.4)	
	IV	102 (2.9)	70 (3.0)	13(3.1)	
CD4 Count (n = 6,556)	CD4 <100	915 (24.6)	647 (27.0)	114 (25.8)	0.0001
	CD4 (101–250)	1,518 (40.8)	1,120 (46.8)	195 (44.1)	
	CD4 (251–350)	815(21.9)	496 (20.7)	106 (24.0)	
	CD4 > 350	473 (12.7)	130 (5.4)	27 (6.1)	
Duration on ART (n = 6,555)	< 6months	871 (23.40)	502 (21.0)	100 (22.6)	0.0001
	6–12 months	439 (11.8)	275 (11.5)	60 (13.6)	
	13–36 months	1,394 (37.5)	816 (34.1)	138 (31.2)	
	Above 36 months	1,016 (27.3)	800 (33.4)	144 (32.6)	
Body Mass Index (n = 6,035)	> = 30	103 (3.0)	63 (2.9)	15 (3.8)	0.0001
	25.0–29.9	112 (2.8)	66 (2.5)	13 (2.7)	
	18.5–24.9	2,552 (74.1)	1,459 (66.6)	244 (61.0)	
	<18.5	790 (22.9)	668 (30.5)	141 (35.3)	
Education (n = 5,244)	None	121 (4.0)	148 (7.9)	31 (10.2)	0.0001
	Primary	1,875 (61.4)	1,175 (62.3)	197 (65.2)	
	Secondary	816 (26.7)	381 (20.2)	44 (14.5)	
	Tertiary	244 (8.0)	182 (9.7)	30 (9.9)	
Occupation (n = 5,745)	Unemployed	684 (21.1)	337 (16.8)	59 (15.4)	<0.001
	Business	708 (21.8)	314 (15.6)	42 (10.9)	
	Farmer	978 (30.1)	840 (41.8)	207 (54.1)	
	Civil service	100 (3.1)	140 (6.9)	20 (5.2)	
	Others	779 (23.9)	381 (18.9)	55 (14.4)	
Partner HIV status (N = 6,103)	Negative	189 (5.6)	179 (7.7)	38 (10.2)	0.381
	Positive	1,519 (44.8)	1,049 (44.8)	129 (4.8)	
	Unknown	943 (27.8)	670 (28.6)	96 (34.5)	
	No partner	738 (21.8)	442 (18.9)	101 (27.1)	

<https://doi.org/10.1371/journal.pone.0201898.t001>

Table 3 shows the crude and adjusted risk ratios for the predictors of mortality. The adjusted model shows that older age was associated with a 63% increased risk of mortality (adjusted RR = 1.63, 95% C.I 1.26–2.11) compared to the young adults while as middle aged had a 17% reduced risk for mortality compared to the young. Men had a 45% higher risk for mortality compared to the females (adjusted RR = 1.45, 95% CI 1.23, 1.72). Mortality risk was higher among patients initiated on ART at more advanced disease stage of 2, 3 or 4 compared to those initiated on ART at disease stage 1. Similarly, there was a high risk for mortality in the lowest CD4 category (less than 100) compared to the highest category of more than 350 cells, with a dose response relationship. The multivariable regression analysis shows that after adjusting for gender, CD4 count, education and duration on ART, age at initiation of ART remained an important predictor of mortality and older patients had a poorer prognosis compared to the young age group.

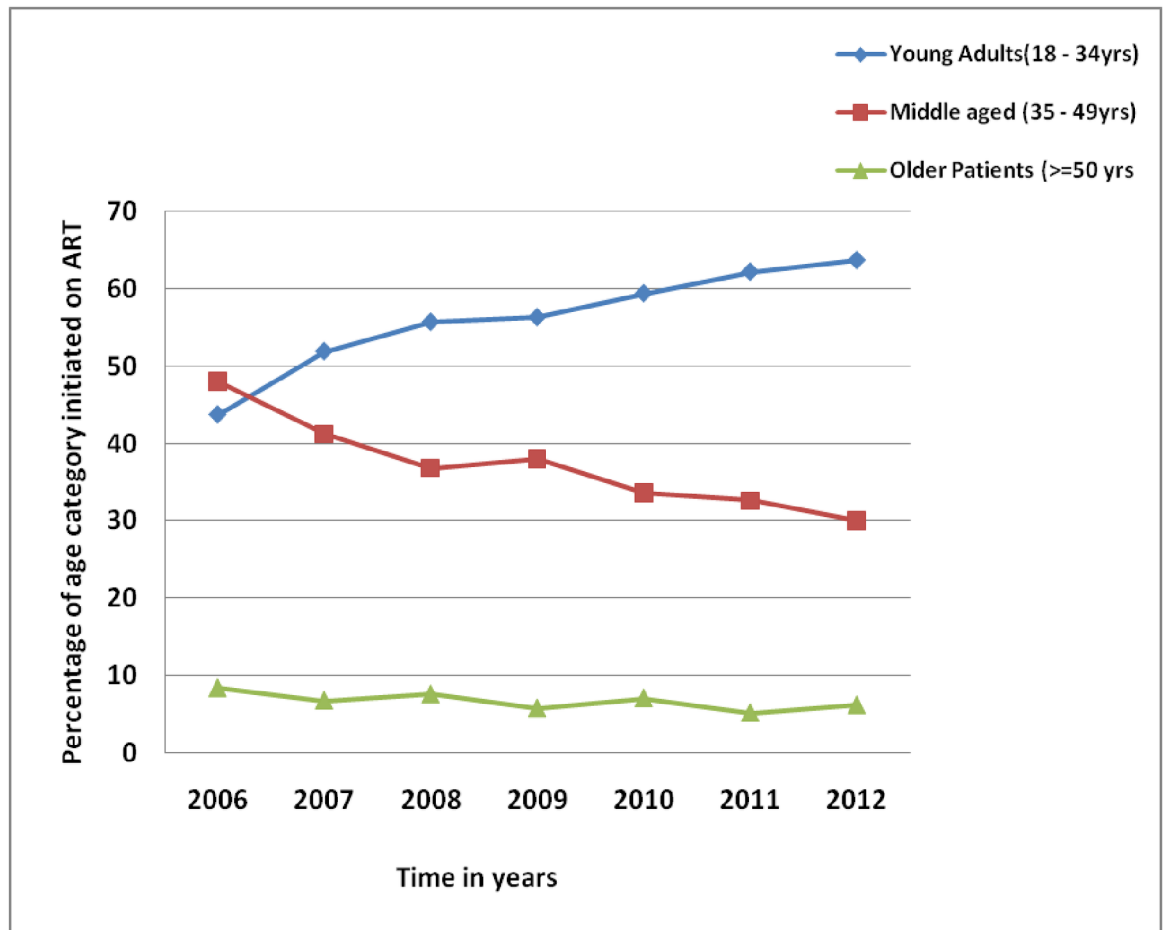


Fig 2. Trends in age of patients initiated on ART at Mbarara Regional Referral Hospital, Uganda, 2006–2012.

<https://doi.org/10.1371/journal.pone.0201898.g002>

In Table 4, we present the results for the analysis to determine the effect of age on CD4 response. The older age group had an increased risk of 79% for experiencing CD4 decline following treatment, however this effect was not statistically significant (RR = 1.79; 95% CI 0.89–3.58). Men were 2 times more likely to experience poor immunological response compared to the women and this difference was statistically significant RR = 2.02, 95% CI 1.23, 3.33). Patients who had been on ART for longer (i.e. 6 months or longer) were less likely to have poor immunological outcomes compared to those who had been on treatment for a shorter duration.

Discussion

Our study based at a large urban clinic has shown that older age is associated with poorer response to ART and excess mortality compared to the younger. The data agree with other studies across the African continent also showing higher risk for mortality among older HIV infected adults [20, 22–25]. Also in agreement with a recent study from China [26], older persons in our cohort had higher risk for poor immunological outcomes compared to the younger ones. However, this effect was attenuated when we adjusted for duration of ART.

One of the major strengths of our study is that our cohort had been followed for up to 6 years by the time of this analysis. The long duration of follow up in the cohort offers a unique

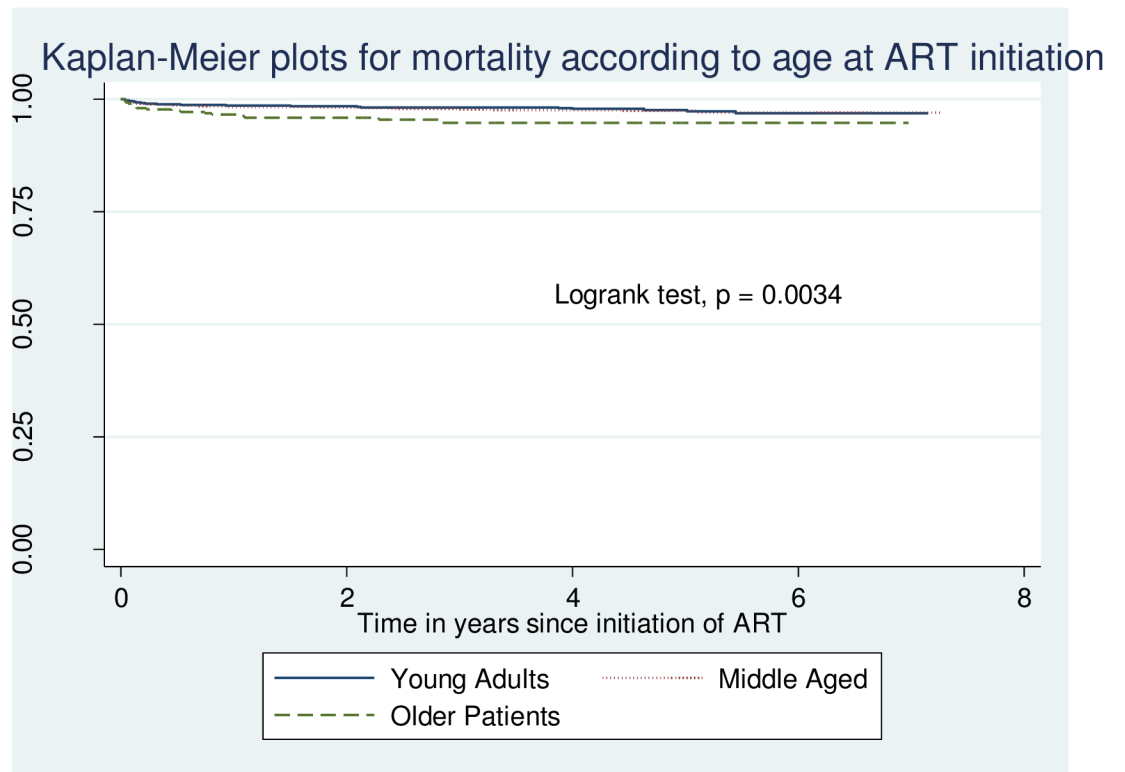


Fig 3. Survival by age at initiation of ART among patients at Mbarara Regional Referral Hospital, Uganda, 2006–2012.

<https://doi.org/10.1371/journal.pone.0201898.g003>

Table 2. Table showing trends in characteristics of patients at initiation on ART between January 2006 and December 2012, Mbarara Regional Referral Hospital, Uganda.

Variable	Categories	Year of ART initiation n (%)						
		2006	2007	2008	2009	2010	2011	2012
Age category (n = 8,364)	18–34 years	503 (43.7)	689 (51.9)	740 (55.7)	622 (56.3)	732 (59.4)	690 (62.2)	710 (63.7)
	35–49 years	552 (48.0)	550 (41.2)	488 (36.8)	420 (38.0)	414 (33.6)	362 (32.6)	335 (30.0)
	> = 50 years)	95 (8.3)	89 (6.7)	100 (7.5)	63 (5.7)	86 (7.0)	56 (5.1)	68 (6.1)
Gender (n = 8,533)	Females	721 (62.3)	862 (63.2)	856 (62.8)	711 (62.7)	785 (62.2)	689 (61.5)	687 (60.6)
	Males	436 (37.7)	501 (36.8)	509 (37.3)	422 (37.3)	477 (37.8)	431 (38.5)	446 (39.4)
CD4 cell count at ART initiation/ μ ml, (n = 6,560)	<100	189 (25.0)	203 (20.8)	350 (30.2)	254 (27.0)	254 (25.7)	222 (25.2)	196 (23.7)
	101–250	395 (49.9)	510 (52.4)	521 (45.0)	424 (45.1)	410 (41.4)	284 (32.2)	291 (35.2)
	251–350	151 (19.1)	205 (21.1)	221 (19.1)	202 (21.5)	191 (19.3)	224 (25.4)	224 (27.1)
	> 350	48 (6.1)	55 (5.7)	66 (5.7)	60 (6.4)	135 (13.6)	151 (17.1)	115 (13.9)
WHO stage at ART initiation (n = 7,665)	I	198 (17.9)	260 (20.4)	368 (30.9)	418 (41.8)	521 (45.5)	566 (57.0)	584 (61.1)
	II	313 (28.3)	429 (33.7)	397 (33.4)	322 (32.2)	337 (29.4)	280 (28.2)	245 (25.6)
	III	473 (42.7)	460 (36.1)	330 (27.8)	202 (20.2)	181 (15.8)	89 (9.0)	76 (8.0)
	IV	124 (11.2)	125 (9.8)	94 (7.9)	58 (5.8)	106 (9.3)	58 (5.8)	51 (5.3)
Body Mass index (N = 7,075)	Under weight	261 (29.0)	366 (31.2)	315 (29.4)	287 (30.3)	326 (29.2)	200 (21.2)	200 (21.7)
	Normal	611 (67.8)	758 (64.7)	721 (67.3)	634 (66.9)	744 (66.7)	701 (74.2)	683 (74.0)
	Over weight	23 (2.6)	423.6	28 (2.6)	23 (2.4)	29 (2.6)	41 (4.3)	34 (3.7)
	Obese	6 (0.7)	6 (0.5)	7 (0.7)	4 (0.4)	161.4	3 (0.3)	6 (0.7)

<https://doi.org/10.1371/journal.pone.0201898.t002>

Table 3. Table showing crude and adjusted risk ratios for predictors of mortality using Poisson regression analysis.

Variable	Categories	Crude Risk Ratios (95% CI)	p value	Adjusted [†] Risk Ratios (95% CI)	p value
Age Categories	Young adults (18–34 years)	1.0		1.0	
	Middle aged (35–49 years)	1.11 (0.79–1.35)	0.029	0.83* (0.69–0.98)	0.037
	Older (> = 50 years)	2.03* (1.25–3.30)		1.63* (1.26–2.11)	
Gender	Female	1.0		1.0	
	Male	2.33* (1.71–3.17)	<0.001	1.45* (1.23–1.72)	0.008
WHO Stage	I	1.0		1.0	
	II	4.50* (2.46–8.12)		2.89* (2.17–3.85)	
	III	22.20* (13.56–36.21)	<0.001	9.17* (7.22–11.65)	<0.001
	IV	96.64* (51.81–162.09)		18.14* (13.63–24.15)	
CD4 count	> 350 cells/ml	1.0		1.0	
	251–350 cells/ml	2.20 (0.5–9.67)		4.32* (1.89–8.94)	
	100–250 cells/ml	3.23 (0.79–13.20)	<0.001	5.66* (2.66–12.05)	0.005
	<100 cells/ml	7.79* (1.92–31.67)		7.32* (4.14–18.79)	
Level of Education	None	1		1	
	Primary	0.88 (0.49–1.54)		0.51* (0.39–0.67)	
	Secondary	0.75 (0.38–1.45)	0.052	0.51* (0.37–0.68)	0.09
	Tertiary	1.35 (0.67–2.70)		1.16 (0.83–1.62)	
Body Mass Index	> = 30	1		1	
	25.0–29.9	0.28* (0.12–0.66)	<0.001	0.33* (0.25–0.60)	<0.001
	18.5–24.9	0.42 (0.71–1.34)		0.35 (0.69–1.13)	
	<18.5	1.05 (0.46–2.43)		0.62 (0.29–1.23)	

* Significant at 0.05 level.

[†]The variables adjusted for include gender, CD4 count, BMI, level of education

<https://doi.org/10.1371/journal.pone.0201898.t003>

opportunity to examine whether the difference in mortality changes over time. Our data show that older persons retain a significantly higher risk for mortality and this is not modified over time. Some of the African studies have had fairly shorter follow up times, hence not able to make conclusions on the long term survival by age at ART initiation [23].

The higher risk for mortality should be a cause for concern as some countries have shown increasing trends in HIV prevalence among older persons [1] and generally, prevalence in this

Table 4. Table showing crude and adjusted risk ratios for the predictors of immunological response using Poisson regression analysis.

Variable	Categories	Crude Risk Ratios	p value	Adjusted Risk Ratios [†] (95%CI)	p value
Age Categories	Young Adults (18–34yrs)	1.0		1.0	
	Middle aged (35–49yrs)	0.91* (0.88–0.95)		0.86 (0.5–1.47)	0.10
	Older Patients (>= 50 yrs)	0.92* (0.85–0.99)	0.003	1.79 (0.89–3.58)	
Gender	Female	1.0		1.0	
	Male	1.87* (1.35–3.03)	0.028	2.02* (1.23–3.33)	0.005
Duration on ART	Less than 6 Months	1.0		1.0	
	6 to 12 Months	0.92 (0.82–1.04)		0.44* (0.21–0.95)	
	13 to 36 Months	0.44* (0.40–0.49)	<0.001	0.36* (0.16–0.56)	<0.001
	Over 36 Months	0.23* (0.19–0.24)		0.13* (0.06–0.27)	

* Significant at 0.05 level, Analysis adjusted for gender and duration on ART

<https://doi.org/10.1371/journal.pone.0201898.t004>

older group has been shown to be high in many sub Saharan Africa countries, up to 20% in Zimbabwe [27]. The biological explanation for excess mortality may be because of the poor immunological response which is due to involution of the thymus gland among older patients. The involution of the thymus gland, which is involved in CD4 T-cell reconstitution during ART, has a negative effect on immunologic recovery during therapy [28]. Output from the thymus gland reaches its minimum after 55 years of age [29], hence older patients may require adjuvant therapy to stimulate their immunological response to equal that of the younger patients.

Our findings have important implications for treatment for HIV infections among older persons. Current ART treatment guidelines recommend treatment of all children and adolescents who test positive for HIV regardless of CD4 count. Treatment programs have now moved to implement test and treat approach for ART programs. Older persons should be priority for eligibility to initiate ART very early to mitigate the potential poor outcomes in situations where resources are limited. The treatment for older adults is likely to face challenges. First, there is limited data on HIV incidence and prevalence among older persons [30]. Second, older patients are less likely to be screened for HIV [31] as they are considered not sexually active and at lower risk for HIV and therefore are likely to be diagnosed in advanced HIV and present late for treatment. Data from Uganda among a cohort of 750 patients aged 50 and above showed at least 40% of them were sexually active and also older patients in the cohort were more than two times likely to have a Sexually transmitted infection compared to the younger ones [32]. Third, some antiretroviral medicines in the standard regimens are linked to non-communicable diseases or NCDs [33] at the same time patients living to the age when they would be at high risk for NCDs regardless of HIV status. Fourthly, is that older patients have been shown to suffer high levels of stigma, even after disclosure of serostatus [16]. Stigma among older persons has also been shown to have a positive correlation with depression [15, 34], and all of these will present challenges of successful ART delivery to these patients.

This study also showed a steady rise in the proportion of young adults initiated on ART from 43.7% in 2006 to 63.7% in 2012 with a decrease in the proportion of patients in the mid-age category. These findings may mean two things; firstly it could be that young adults have continued to actively access HIV care and treatment more than the middle aged and the older patients. Secondly this data suggests that younger people may be more likely to acquire HIV compared to the older patients but we should note that this prevalence data and not incidence and hence cannot be used to measure new infections. However, the number of new patients initiated on ART could be used as a proxy assuming there are no barriers to accessing ART among the different age groups. As a result, our data suggests that HIV infection prevention packages should target the young adults during comprehensive HIV/AIDS services delivery since they formed the majority of new patients initiated on ART and possibly new HIV infections.

The proportion of older adults enrolling into ART programs remained stable for most of the follow up and showed modest decreases towards the end of the follow up period. Our data are different than those of a recent publication from a large cohort in South Africa where the proportion of patients aged 50 years and above increased from 6% to 10% over a ten year period [22], indicating that this program has been successful in reaching older clients or that prevalence of HIV is increasing in this age group. An almost flat line in the trend of enrollment in our cohort may imply that older persons are less likely to be diagnosed, have poor access to ART because of certain barriers or older persons represent a lower risk group or a combination of these factors. There is limited data on the prevalence of HIV among older persons in Africa but available data from the few countries that have this data such as South Africa indicate a high prevalence and incidence in this age group [35].

CD4 count is an important confounder in our study. Our data also show significant trends in CD4 count. Patients initiating ART in 2012 were more likely to start ART at higher CD4 count than those who initiated in 2006 and this may be explained by the policy change in the guidelines for ART initiation in 2010 when the CD4 cut off for ART initiation was lifted from 250cells/ml to 350cells/ml. However, data show the increase in the percentage of patients initiating ART at higher CD4 counts started before the policy change. This rise may be explained by more availability of ART treatment slots at this clinic as more resources for treatment became available. The increasing CD4 counts were independent of age. Despite this, our results indicated higher risk of mortality among older patients and remained significant even after adjusting for CD4 count.

Overall, our data show the largest proportion of patients receiving care at this large urban clinic is predominantly young and female. Over 60% of the patients were female with an overall median age of 32 years. The distribution is similar to that seen at several other clinics in sub-Saharan Africa [36, 37], suggesting a feminization of the HIV epidemic on the continent.

Our study has several weaknesses. First, we used routinely collected data from a large busy clinic and such data often has several missing values. Clinicians may miss to complete some fields because of the rush to complete the long queues of patients for consultation visits. For instance, over 100 patients had no ART start date and over 600 transferred out and there was no medical record for them. If patients transferred out are more likely to be older, this would result in an underestimate of total mortality. However, the gender and age distribution of patients not included in the analysis were similar to those in the analysis. Second, mortality may also have been under-estimated in cases where patients have died and mortality is not captured in the database, and instead clinicians may capture this as a loss to follow up. Third, we did not have viral load results for the entire cohort. VL testing is a gold standard for monitoring ART but is expensive and patients have to cost share to get the test done. Fourth, we collected these data six years ago and policies in HIV treatment initiation have changed. However, the data are still relevant because at least 40% of the population have still not tested for HIV. Additionally, because of absence of these data, we did not adjust for chronic diseases such as hypertension and diabetes which are major confounders in this study. Lastly, we did not include adherence in the analysis because these data were not routinely collected for majority of patients. However, literature shows older patients adhere better to their ART medications [38], hence adjusting for adherence would not dampen the measure of effect.

In conclusion, our study has shown that the proportion of young adults and those patients in WHO Stage I of HIV disease who were being initiated on ART increased over a seven year period. Secondly, older patients showed poorer immunological response and higher risk for mortality following ART initiation compared to the young adults. Further studies should be conducted to further understand the biological mechanisms for the poorer immunological response and the excess mortality in the older patients. Interventions such as adjuvant therapy to antiretroviral therapy may be necessary to improve immunological recovery.

Supporting information

S1 Data. Age_data—Data set for cohort of patients receiving antiretroviral therapy.
(DTA)

Acknowledgments

We would like to thank Michael Kanyesigye and the staff in the Database section of the ISS clinic at Mbarara Hospital for support in retrieving data.

Author Contributions

Conceptualization: Peter Ssebutinde, Francis Bajunirwe.

Data curation: Peter Ssebutinde.

Formal analysis: Peter Ssebutinde, Imelda T. Kyamwanga, Eleanor Turyakira, Stephen Asiimwe, Francis Bajunirwe.

Investigation: Eleanor Turyakira.

Methodology: Peter Ssebutinde, Imelda T. Kyamwanga, Eleanor Turyakira, Stephen Asiimwe, Francis Bajunirwe.

Supervision: Imelda T. Kyamwanga, Stephen Asiimwe, Francis Bajunirwe.

Writing – original draft: Peter Ssebutinde, Eleanor Turyakira, Francis Bajunirwe.

Writing – review & editing: Peter Ssebutinde, Imelda T. Kyamwanga, Eleanor Turyakira, Stephen Asiimwe, Francis Bajunirwe.

References

1. Mahy M, Autenrieth CS, Stanecki K, Wynd S. Increasing trends in HIV prevalence among people aged 50 years and older: evidence from estimates and survey data. *AIDS*. 2014; 28 Suppl 4:S453–9. Epub 2014/09/16. PMID: [25222641](#).
2. UNAIDS Report on Global AIDS Epidemic: Accessed October 15, 2015 at http://www.unaids.org/sites/default/files/media_asset/UNAIDS_Global_Report_2013_en_1.pdf
3. Reniers G, Slaymaker E, Nakiyingi-Miiri J, Nyamukapa C, Crampin AC, Herbst K, et al. Mortality trends in the era of antiretroviral therapy: evidence from the Network for Analysing Longitudinal Population based HIV/AIDS data on Africa (ALPHA). *AIDS*. 2014; 28 Suppl 4:S533–42. Epub 2014/11/20. PMID: [25406756](#).
4. Slaymaker E, Todd J, Marston M, Calvert C, Michael D, Nakiyingi-Miiri J, et al. How have ART treatment programmes changed the patterns of excess mortality in people living with HIV? Estimates from four countries in East and Southern Africa. *Global health action*. 2014; 7:22789. Epub 2014/04/26. <https://doi.org/10.3402/gha.v7.22789> PMID: [24762982](#).
5. Samji H, Cescon A, Hogg RS, Modur SP, Althoff KN, Buchacz K, et al. Closing the gap: increases in life expectancy among treated HIV-positive individuals in the United States and Canada. *PLoS One*. 2013; 8(12):e81355. Epub 2013/12/25. <https://doi.org/10.1371/journal.pone.0081355> PMID: [24367482](#).
6. Antiretroviral Therapy Cohort C. Life expectancy of individuals on combination antiretroviral therapy in high-income countries: a collaborative analysis of 14 cohort studies. *Lancet*. 2008; 372(9635):293–9. Epub 2008/07/29. [https://doi.org/10.1016/S0140-6736\(08\)61113-7](https://doi.org/10.1016/S0140-6736(08)61113-7) PMID: [18657708](#).
7. Mills EJ, Bakanda C, Birungi J, Chan K, Ford N, Cooper CL, et al. Life expectancy of persons receiving combination antiretroviral therapy in low-income countries: a cohort analysis from Uganda. *Ann Intern Med*. 2011; 155(4):209–16. Epub 2011/07/20. <https://doi.org/10.7326/0003-4819-155-4-201108160-00358> PMID: [21768555](#).
8. Johnson LF, Mossong J, Dorrington RE, Schomaker M, Hoffmann CJ, Keiser O, et al. Life expectancies of South African adults starting antiretroviral treatment: collaborative analysis of cohort studies. *PLoS Med*. 2013; 10(4):e1001418. Epub 2013/04/16. <https://doi.org/10.1371/journal.pmed.1001418> PMID: [23585736](#).
9. Greig J, Casas EC, O'Brien DP, Mills EJ, Ford N. Association between older age and adverse outcomes on antiretroviral therapy: a cohort analysis of programme data from nine countries. *AIDS*. 2012; 26 Suppl 1:S31–7. Epub 2012/09/22. PMID: [22781173](#).
10. Eduardo E, Lamb MR, Kandula S, Howard A, Mugisha V, Kimanga D, et al. Characteristics and outcomes among older HIV-positive adults enrolled in HIV programs in four sub-Saharan African countries. *PLoS One*. 2014; 9(7):e103864. Epub 2014/07/31. <https://doi.org/10.1371/journal.pone.0103864> PMID: [25075743](#).
11. Grabar S, Kousignian I, Sobel A, Le Bras P, Gasnault J, Enel P, et al. Immunologic and clinical responses to highly active antiretroviral therapy over 50 years of age. Results from the French Hospital Database on HIV. *AIDS*. 2004; 18(15):2029–38. Epub 2004/12/04. PMID: [15577624](#).

12. Negin J, van Lettow M, Semba M, Martiniuk A, Chan A, Cumming RG. Anti-retroviral treatment outcomes among older adults in Zomba district, Malawi. *PLoS One*. 2011; 6(10):e26546. Epub 2011/10/28. <https://doi.org/10.1371/journal.pone.0026546> PMID: 22031839.
13. Castilla J, Sobrino P, De La Fuente L, Noguer I, Guerra L, Parras F. Late diagnosis of HIV infection in the era of highly active antiretroviral therapy: consequences for AIDS incidence. *AIDS*. 2002; 16(14):1945–51. Epub 2002/09/28. PMID: 12351955.
14. Skiest DJ, Rubinstien E, Carley N, Gioiella L, Lyons R. The importance of comorbidity in HIV-infected patients over 55: a retrospective case-control study. *Am J Med*. 1996; 101(6):605–11. Epub 1996/12/01. [https://doi.org/10.1016/S0002-9343\(96\)00329-4](https://doi.org/10.1016/S0002-9343(96)00329-4) PMID: 9003107.
15. Emler CA. Experiences of stigma in older adults living with HIV/AIDS: a mixed-methods analysis. *AIDS Patient Care STDS*. 2007; 21(10):740–52. Epub 2007/10/24. <https://doi.org/10.1089/apc.2007.0010> PMID: 17949273.
16. Kuteesa MO, Wright S, Seeley J, Mugisha J, Kinyanda E, Kakembo F, et al. Experiences of HIV-related stigma among HIV-positive older persons in Uganda—a mixed methods analysis. *SAHARA J*. 2014; 11:126–37. Epub 2014/07/24. <https://doi.org/10.1080/17290376.2014.938103> PMID: 25053275.
17. Oraka E, Mason S, Xia M. Too old to test? Prevalence and correlates of HIV testing among sexually active older adults. *Journal of gerontological social work*. 2018:1–11. Epub 2018/03/28. <https://doi.org/10.1080/01634372.2018.1454565> PMID: 29583105.
18. Schatz E, Houle B, Mojola SA, Angotti N, Williams J. How to "Live a Good Life": Aging and HIV Testing in Rural South Africa. *Journal of aging and health*. 2018:898264317751945. Epub 2018/01/11. <https://doi.org/10.1177/0898264317751945> PMID: 29318924.
19. Negin J, Wariero J, Cumming RG, Mutuo P, Pronyk PM. High rates of AIDS-related mortality among older adults in rural Kenya. *J Acquir Immune Defic Syndr*. 2010; 55(2):239–44. Epub 2010/07/20. <https://doi.org/10.1097/QAI.0b013e3181e9b3f2> PMID: 20639764.
20. Mutevedzi PC, Lessells RJ, Rodger AJ, Newell ML. Association of age with mortality and virological and immunological response to antiretroviral therapy in rural South African adults. *PLoS One*. 2011; 6(7):e21795. Epub 2011/07/13. <https://doi.org/10.1371/journal.pone.0021795> PMID: 21747959.
21. Consolidated guidelines on the use of antiretroviral drugs for treating and preventing HIV infection Recommendations for a public health approach—Second edition 2016 [March 30, 2018]. <http://www.who.int/hiv/pub/arv/arv-2016/en/>.
22. Cornell M, Johnson LF, Schomaker M, Tanser F, Maskew M, Wood R, et al. Age in antiretroviral therapy programmes in South Africa: a retrospective, multicentre, observational cohort study. *The lancet HIV*. 2015; 2(9):e368–75. Epub 2015/10/02. [https://doi.org/10.1016/S2352-3018\(15\)00113-7](https://doi.org/10.1016/S2352-3018(15)00113-7) PMID: 26423550.
23. Balestre E, Eholie SP, Lokossue A, Sow PS, Charurat M, Minga A, et al. Effect of age on immunological response in the first year of antiretroviral therapy in HIV-1-infected adults in West Africa. *AIDS*. 2012; 26(8):951–7. Epub 2012/03/03. <https://doi.org/10.1097/QAD.0b013e3283528ad4> PMID: 22382142.
24. Bakanda C, Birungi J, Mwesigwa R, Ford N, Cooper CL, Au-Yeung C, et al. Association of aging and survival in a large HIV-infected cohort on antiretroviral therapy. *AIDS*. 2011; 25(5):701–5. Epub 2010/12/17. <https://doi.org/10.1097/QAD.0b013e3283437ed7> PMID: 21160412.
25. Semeere AS, Lwanga I, Sempa J, Parikh S, Nakasujja N, Cumming R, et al. Mortality and immunological recovery among older adults on antiretroviral therapy at a large urban HIV clinic in Kampala, Uganda. *Journal of acquired immune deficiency syndromes (1999)*. 2014; 67(4):382–9. Epub 2014/08/30. <https://doi.org/10.1097/qai.0000000000000330> PMID: 25171733.
26. Wong NS, Chan KCW, Cheung EKH, Wong KH, Lee SS. Immune recovery of middle-aged HIV patients following antiretroviral therapy: An observational cohort study. *Medicine*. 2017; 96(28):e7493. Epub 2017/07/13. <https://doi.org/10.1097/MD.00000000000007493> PMID: 28700495.
27. Negin J, Cumming RG. HIV infection in older adults in sub-Saharan Africa: extrapolating prevalence from existing data. *Bull World Health Organ*. 2010; 88(11):847–53. Epub 2010/11/16. <https://doi.org/10.2471/BLT.10.076349> PMID: 21076566.
28. Douek DC, McFarland RD, Keiser PH, Gage EA, Massey JM, Haynes BF, et al. Changes in thymic function with age and during the treatment of HIV infection. *Nature*. 1998; 396(6712):690–5. Epub 1999/01/01. <https://doi.org/10.1038/25374> PMID: 9872319.
29. Naylor K, Li G, Vallejo AN, Lee WW, Koetz K, Bryl E, et al. The influence of age on T cell generation and TCR diversity. *J Immunol*. 2005; 174(11):7446–52. Epub 2005/05/21. PMID: 15905594.
30. Vollmer S, Alfvén T, Padayachy J, Harttgen K, Ghys PD, Barnighausen T. HIV surveys in older adults: better data, better health. *The lancet HIV*. 2015; 2(2):e40–1. Epub 2015/10/02. [https://doi.org/10.1016/S2352-3018\(15\)00004-1](https://doi.org/10.1016/S2352-3018(15)00004-1) PMID: 26424459.

31. el-Sadr W, Gettler J. Unrecognized human immunodeficiency virus infection in the elderly. *Arch Intern Med*. 1995; 155(2):184–6. Epub 1995/01/23. PMID: [7811128](#).
32. Funk A, Odit M, Nansubuga M, Batamwita R, Macleod C. Elderly patients initiate therapy with more advanced disease and worse clinical outcomes than younger patients: A cohort analysis from Mildmay Uganda; Presented at the II International HIV Treatment as Prevention Workshop; April 22–25, 2012, Vancouver
33. Valcour VG, Shikuma CM, Shiramizu BT, Williams AE, Watters MR, Poff PW, et al. Diabetes, insulin resistance, and dementia among HIV-1-infected patients. *J Acquir Immune Defic Syndr*. 2005; 38(1):31–6. Epub 2004/12/21. PMID: [15608521](#).
34. Emler CA. A comparison of HIV stigma and disclosure patterns between older and younger adults living with HIV/AIDS. *AIDS Patient Care STDS*. 2006; 20(5):350–8. Epub 2006/05/19. <https://doi.org/10.1089/apc.2006.20.350> PMID: [16706709](#).
35. Wallrauch C, Barnighausen T, Newell ML. HIV prevalence and incidence in people 50 years and older in rural South Africa. *S Afr Med J*. 2010; 100(12):812–4. Epub 2011/03/19. PMID: [21414272](#).
36. Muula AS, Ngulube TJ, Siziya S, Makupe CM, Umar E, Prozesky HW, et al. Gender distribution of adult patients on highly active antiretroviral therapy (HAART) in Southern Africa: a systematic review. *BMC Public Health*. 2007; 7:63. Epub 2007/04/27. <https://doi.org/10.1186/1471-2458-7-63> PMID: [17459154](#).
37. Braitstein P, Boulle A, Nash D, Brinkhof MW, Dabis F, Laurent C, et al. Gender and the use of antiretroviral treatment in resource-constrained settings: findings from a multicenter collaboration. *J Womens Health (Larchmt)*. 2008; 17(1):47–55. Epub 2008/02/05. <https://doi.org/10.1089/jwh.2007.0353> PMID: [18240981](#).
38. Ghidei L, Simone MJ, Salow MJ, Zimmerman KM, Paquin AM, Skarf LM, et al. Aging, antiretrovirals, and adherence: a meta analysis of adherence among older HIV-infected individuals. *Drugs & aging*. 2013; 30(10):809–19. Epub 2013/08/21. <https://doi.org/10.1007/s40266-013-0107-7> PMID: [23959913](#).