



The Brazilian Journal of INFECTIOUS DISEASES

www.elsevier.com/locate/bjid



Original Article

Identification and characterization of nontuberculous mycobacteria isolated from suspected pulmonary tuberculosis patients in eastern china from 2009 to 2019 using an identification array system

YeLei Zhu^{a,1}, Wenya Hua^{b,1}, Zhengwei Liu^a, Mingwu Zhang^a, Xiaomeng Wang^a, Beibei Wu^a, Zhen Wang^{a,*}, Jiazhen Chen^{b,*}

^a Zhejiang Provincial Center for Disease Control and Prevention, Hangzhou, China

^b Department of Infectious Diseases, Shanghai Key Laboratory of Infectious Diseases and Biosafety Emergency Response, National Medical Center for Infectious Diseases, Huashan Hospital, Fudan University, Shanghai, China

ARTICLE INFO

Article history:

Received 15 October 2021

Accepted 21 February 2022

Available online 11 March 2022

Keywords:

Identification

Nontuberculous mycobacteria

Pulmonary tuberculosis

NTM pulmonary diseases

ABSTRACT

Objective: Nontuberculous mycobacteria (NTM) species are increasingly being isolated and have become a key factor affecting public health by causing pulmonary diseases. Most NTM species do not respond to conventional tuberculosis (TB) drugs. This study aimed to identify NTM isolated from suspected pulmonary TB patients from the Zhejiang province and analyze their distribution in the region.

Methods: A total of 1,113 NTM isolates from patients suspected to be suffering from acid-fast bacilli-positive tuberculosis were identified at the species level, using the CapitalBio Mycobacterium identification array and polymerase chain reaction amplification and sequencing of 16S-23S gene internal transcribed spacer (ITS), 16S rRNA, and *hsp65*.

Results: Of the 23,138 isolates, we identified 1,102 NTM (4.8%), mainly including *Mycobacterium intracellulare* (54.81%, 604/1,102), *M. chelonae-M. abscessus* (16.52%, 182/1,102), *M. avium* (13.16%, 145/1,102), *M. kansasii* (8.17%, 90/1,102), and *M. goodii* (3.27%, 36/1,102).

Conclusion: The distribution of NTM species observed in patients with suspected pulmonary tuberculosis provides guidance for the diagnosis and treatment of NTM pulmonary diseases.

© 2022 Sociedade Brasileira de Infectologia. Published by Elsevier España, S.L.U. This is an open access article under the CC BY-NC-ND license (<http://creativecommons.org/licenses/by-nc-nd/4.0/>)

Abbreviations: NTM, nontuberculous mycobacteria; TB, tuberculosis; MTBC, *M. tuberculosis* complex; SGM, slowly growing mycobacteria; MAC, *M. avium* complex; MABC, *M. abscessus* complex; RGM, rapidly growing mycobacteria; AFB, acid-fast bacilli; PCR, polymerase chain reaction; ITS, internal transcribed spacer

* Corresponding author.

E-mail addresses: wangzhen@cdc.zj.cn (Z. Wang), jiazhen_chen@163.com (J. Chen).

¹ Contributed equally.

<https://doi.org/10.1016/j.bjid.2022.102346>

1413-8670/© 2022 Sociedade Brasileira de Infectologia. Published by Elsevier España, S.L.U. This is an open access article under the CC BY-NC-ND license (<http://creativecommons.org/licenses/by-nc-nd/4.0/>)

Introduction

Nontuberculous mycobacteria (NTM) refer to *Mycobacterium* species other than *M. tuberculosis* complex (MTBC) and *M. leprae*.¹ NTM are opportunistic pathogens of animals and humans that exist in the environment.² Most NTM cause pulmonary diseases, which usually occur in underlying

structural airway diseases such as bronchiectasis or chronic pulmonary disease.³ In recent years, in many countries, the rate of NTM isolation from respiratory specimens and the number of patients infected with NTM have been increasing rapidly.⁴⁻⁶ Importantly, most NTM (except *M. kansasii*) are resistant to all commonly used anti-tuberculous drugs or susceptible to only partially standard anti-tuberculous drugs.⁷ More and more people realize the importance of NTM diagnosis in the treatment of lung diseases.⁸ Thus, the identification of NTM species in respiratory specimens is critical for choosing effective regimen.

Among many known NTM species, only a small number cause pulmonary disease in humans. The most common slowly growing mycobacteria (SGM) are members of *M. avium* complex (MAC),⁹ including *M. avium* and *M. intracellulare*. Among rapidly growing mycobacteria (RGM), *M. abscessus* complex (MABC), *M. chelonae* and *M. fortuitum* are by far the most common pathogens of pulmonary disease. The pathogenicity of NTM varies greatly among different species. For example, *M. gordonae* is considered to rarely cause disease in humans, while *M. kansasii* is pathogenic.¹⁰ For low pathogenic species, such as *M. gordonae*, several repeated tests for the presence of positive cultures within a few months, as well as strong clinical and radiological evidence of the disease, would be necessary to determine whether *M. gordonae* caused the disease. On the other hand, for *M. kansasii* isolated, a positive culture may be sufficient to support the initiation of antimicrobial treatment.¹¹

In China, tuberculosis (TB) is still a serious public health problem. Therefore, some patients with the sputum specimens tested positive for acid-fast bacilli (AFB) would be misdiagnosed as pulmonary TB and treated with anti-TB drugs. In China, people lack comprehensive understanding of the degree of misdiagnosis and inappropriate treatment of disease due to NTM infection. However, NTM isolation does not necessarily mean disease diagnosis, once NTM may be contamination or colonization. Thus, when facing the isolation of NTM species, clinicians have difficulty in diagnosing NTM infection.¹² Therefore, the correct identification of NTM must be performed to provide an appropriate treatment regimen.¹³

In the present study, we collected sputum specimens from patients with suspected pulmonary TB in a longitudinal study (2009–2019) from 49 hospitals or TB surveillance stations in Zhejiang province. Furthermore, we analyzed the distribution of the isolated NTM species in the province.

Material and methods

Strains

A total of 23,138 isolates from patients with suspected AFB-positive tuberculosis were collected from 49 hospitals or TB surveillance stations in 2009 to 2019 and transported to the Center for Disease Control and Prevention in Zhejiang province, China. All isolates were cultivated on Löwenstein-Jensen medium. Ethical approval was granted by the Center for Disease Control and Prevention in Zhejiang province Research Ethics Committee (Ethics number: 2017-005). Data collection was conducted under regulations covering information collection.



Fig. 1 – Positive, clear and distinguishable red bands appear in both the control (C) zone and the test zone (T). Negative, only one red band appears in the control (C) zone.

Immunochromatographic identification using MPB64-ICA

The MPB64-ICA (Hangzhou Genesis Biodetection & Biocontrol Co., Ltd., Hangzhou, China) is a rapid immunochromatographic identification test for the *M. tuberculosis* complex that uses anti-MPB64 monoclonal antibodies. The test was performed according to the manufacturer's instructions strictly.¹⁴ In brief, 100 μ L of broth cultures were inoculated to the 96-well plates and then allowed to stand at 25°C for 15 min. A red band in the test zone is produced if MPB64 is present in the sample (Fig. 1).

DNA extraction

NTM colonies were recovered from sputa of patients with suspected pulmonary TB and scraped onto 7H10 medium (Becton, Dickinson and Company, USA). Genomic DNA was extracted using the DNeasy Blood & Tissue Kit (QIAGEN, Valencia, CA, USA), following the manufacturer's protocol as previously reported.¹⁵

Detection using CapitalBio Mycobacterium identification array system

DNA microarray chip from Mycobacterial Species Identification Array Kit (CapitalBio Technology Inc., Beijing, China) was performed for NTM species identification as previously reported.¹⁶⁻¹⁸ It can identify as many as 17 *Mycobacterium* species: *M. tuberculosis* complex, *M. chelonae*-*M. abscessus*, *M. fortuitum*, *M. intracellulare*, *M. avium*, *M. kansasii*, *M. gordonae*, *M. terrae*, *M. smegmatis*, *M. szulgai*/*M. malmoeense*, *M. nonchromogenicum*, *M. scrofulaceum*, *M. xenopi*, *M. aurum*, *M. marinum*/*M. ulcerans*, *M. gilvum*, and *M. phlei* (Fig. 2).

Polymerase chain reaction (PCR) and DNA sequencing

The PCR amplification of 16S-23S rRNA gene internal transcribed spacer (ITS), 16S rRNA, and *hsp65* were performed. Primers and the PCR cycling conditions are listed in Table 1. PCR products were purified and sequenced on ABI3730XL (Shanghai Shengong Biological Engineering Technology Co., Ltd. Shanghai, China). The consensus 16S-23S ITS, 16S rRNA, and *hsp65* sequences of each isolate were analyzed using BLAST.¹⁹ Sequence similarity alignment referred to the microbial database of representative genome, and only highly similar sequences were selected, while other settings were set by default. The identification criteria for sequence similarity at the species level using the database is $\geq 97\%$.

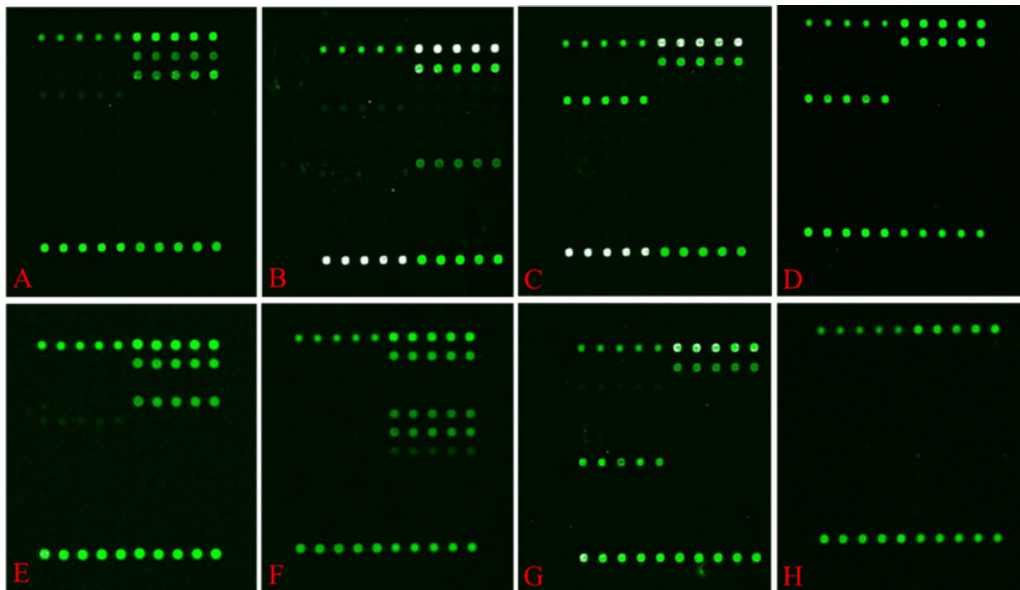


Fig. 2–Hybridization patterns of representative strains on the probe array (Mycobacterial Species Identification Array Kit (CapitalBio Technology Inc., Beijing, China)). Green fluorescence indicates positive hybridization to the probe. *M. intracellulare* (A), *M. chelonae* and *M. abscessus* (B), *M. avium* (C), *M. kansasii* (D), *M. gordonae* (E), *M. fortuitum* (F), *M. terrae* (G), Negative control (H).

Results

The ratio of pulmonary NTM diseases

Of the 23,138 isolates different patients with pulmonary diseases, 22,025 were identified as MTBC by MPB64-ICA positive, while the remaining 1,113 were identified as non-MTBC isolates. The non-MTBC isolates were then subjected to testing using the CapitalBio Mycobacterium identification array. Among the isolates, 97.21% (1,082/1,113) were identified at species level using positive hybridization with the NTM-specific probes, whereas 2.79% (31/1,113) isolates were identified

as unreadable results using the CapitalBio array assay (Fig. 3). Then, all 31 unidentifiable mycobacterium isolates were sequenced and identified at species level using BLAST. As a result, 20 NTM and 11 non-mycobacteria isolates were identified. In total, we obtained 4.8% (1,102/23,138) NTM isolates from 23,138 patients with suspected acid-fast bacilli-positive tuberculous (Fig. 3).

The spectrum of NTM species

As presented in Table 2, 23 NTM species were detected. Among them, 13 were detected using the CapitalBio assay and 10 species were detected through gene sequencing. The five most dominant species out of 1,102 NTM isolates accounted for 95.93%, which were *M. intracellulare* (54.81%, 604/1,102), *M. chelonae*-*M. abscessus* (16.52%, 182/1,102), *M. avium* (13.16%, 145/1,102), *M. kansasii* (8.17%, 90/1,102), and *M. gordonae* (3.27%, 36/1,102). Other NTM isolates accounted for 4.07% in total, mainly including *M. fortuitum* (0.82%, 9/1,102), *M. scrofulaceum* (0.45%, 5/1,102), *M. peregrinum* (0.45%, 5/1,102), *M. intermedium* (0.36%, 4/1,102), *M. terrae* (0.27%, 3/1,102) (Table 2). Particularly, one *M. tuberculosis* and *M. intracellulare* mixed infection was detected using the array assay.

The distribution of NTM species

As presented in Fig. 4, 1084 NTM isolates have been detected in 11 major cities in the Zhejiang Province. Unfortunately, we could not determine the origin of 18 NTM strains out of 1,102 isolates. The six most prevalent cities were Ningbo (23.52%, 255/1,084), Hangzhou (20.66%, 224/1,084), Shaoxing (16.14%, 175/1,084), Taizhou (10.52%, 114/1,084), Quzhou (7.93%, 86/1,084), and Jinhua (7.93%, 86/1,084), which accounted for 86.72% of all NTM identified. Other cities, including Wenzhou

Table 1 – Primers used in this study.

Gene	Direction*	Sequence (5'3')	Conditions
16S-23S ITS	F	GGG TAC TGA GAT GTT TCA CTT C	95°C for 5 min
	R	TCA CCT CCT TTC TAA GGA GCA CC	35 cycles (94°C for
16s rRNA	F	AGT TTG ATC CTG GCT CAG	35 s; 64/56/60°C for 30 s; 72°C for 50 s)
	R	GGT TAC CTT GTT ACG ACT T	
hsp65	F	ACC AAC GAT GGT GTG TCC AT	
	R	CTT GTC GAA CCG CAT ACC CT	72°C for 10 min

* F and R represent forward and reverse, respectively.

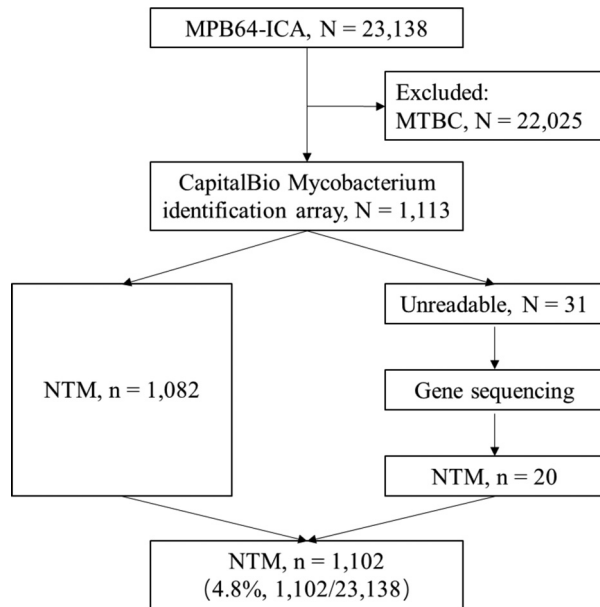


Fig. 3 – Diagram of NTM identification. NTM nontuberculous mycobacteria, MTBC Mycobacterium tuberculosis complex.

(6.37%, 69/1,084), Lishui (4.34%, 47/1,084), Huzhou (1.38%, 15/1,084), Jiaying (0.65%, 7/1,084), and Zhoushan (0.55%, 6/1,084), accounted for only 13.28% of the isolates.

Table 2 – NTM distribution among pulmonary NTM patients, Zhejiang province, 2009-2019.

species	count	proportion	methods	
<i>M. intracellulare</i>	604	54.81%	CapitalBio Mycobacterium identification array	
<i>M. chelonae</i> and <i>M. abscessus</i>	182	16.52%		
<i>M. avium</i>	145	13.16%		
<i>M. kansasii</i>	90	8.17%		
<i>M. goodii</i>	36	3.27%		
<i>M. fortuitum</i>	9	0.82%		
<i>M. scrofulaceum</i>	5	0.45%		
<i>M. terrae</i>	3	0.27%		
<i>M. marinum</i> and <i>M. ulcerans</i>	2	0.18%		
<i>M. smegmatis</i>	2	0.18%		
<i>M. xenopi</i>	2	0.18%		
<i>M. phlei</i>	1	0.09%		
<i>M. szulgai</i> and <i>M. malmoense</i>	1	0.09%		
<i>M. peregrinum</i>	5	0.45%		
<i>M. intermedium</i>	4	0.36%		
<i>M. monacense</i>	2	0.18%		
<i>M. seoulense</i>	2	0.18%		
<i>M. thermoresistibile</i>	2	0.18%		
<i>M. chubuense</i>	1	0.09%		Genes Sequencing
<i>M. mucogenicum</i>	1	0.09%		
<i>M. arupense</i>	1	0.09%		
<i>M. parascrofulaceum</i>	1	0.09%		
<i>M. shigaense</i>	1	0.09%		
sum	1,102	100%		

Discussion

NTM can lead to symptoms that are difficult to distinguish from those of TB, and pose challenges to diagnosis and treatment, especially in low-income and middle-income countries or regions.²⁰ NTM accounts for the majority of the suspected pulmonary TB cases in the world. The proportion of NTM in suspected pulmonary TB was approximately from 4.2% to 6.4% in mainland China. In our study, there were 4.8% (1,102/23,138) NTM isolates among suspected pulmonary TB cases from 49 hospitals or TB surveillance stations from 2009 to 2019 in Zhejiang province. In a national study, there were 6.4% (315/4,917) NTM isolates among mycobacterial isolates from 72 nationwide TB surveillance sites in 31 provinces of mainland China in 2013.²¹ In a study in Fujian province, China, 1,425 isolates were included, of which 60 (4.2%) were identified as NTM species from July 1, 2010 to June 30, 2011.²² However, the proportion of NTM in suspected pulmonary TB varies greatly between different countries or regions: 0.6% (60/10,466), 2.5% (43/2,036), 7.1% (68/958) and 15.1% (62/410) in Northern Tunisia, Ghana, Korea and Iran, respectively.^{13,20,23,24} Thus, the species distribution of NTM isolates and the types of diseases caused by NTM species vary per region.^{25,26}

MAC is the most frequently isolated NTM species from infected pulmonary samples in southeast China,^{22,27} Japan,²⁸ the United States of America,²⁹ and Ghana.¹³ Isolation frequency between MAC species is observed to be different per continent.²⁵ Especially, *M. intracellulare* is the most frequently isolated species in some countries (Table 3). Majority of MAC isolates are causative agents of clinically relevant diseases, that is, the patient ultimately meets the American Thoracic Society/Infectious Disease Society of America diagnostic criteria for NTM pulmonary disease. MAC pulmonary disease typically has two major clinical types: the nodular bronchiectatic form and fibrocavitary form.³⁰

Another NTM species that shows a remarkable difference in isolation frequency is MABC, which is common in Korea,²⁴ China,^{21,22,27} Japan,²⁸ USA,²⁹ and Ghana¹³ but less frequent in Northern Tunisia²³ and Iran.²⁰ MABC is a RGM that is responsible for opportunistic pulmonary infections in patients with structural lung disorders, such as cystic fibrosis and bronchiectasis, as well as a wide range of skin and soft tissue infections in humans.³¹ In addition, MABC is one of the most severe drug resistant bacteria among the RGM; therefore, it is very difficult to treat.³²

It is worth noting that *M. kansasii* is also commonly isolated in many countries or regions. Remarkably, the isolation rate of this pathogen from NTM pulmonary diseases in Northern Tunisia was particularly high, reaching 23.3% of total NTM isolations,²³ as compared with the observed rates in Japan (3.9%)²⁸ and USA (7.7%).²⁹ Pulmonary disease caused by *M. kansasii* tends to cluster in specific geographical locations, with Central Europe being one of the hotspots.³³ However, since *M. kansasii* has been specially recovered from municipal tap water,³⁴ its distribution in different areas may be attributed to the municipal water systems rather than specific ecological environment.³⁵ Typically, disease caused by *M. kansasii* is characterized by apical fibro-cavitary lung disease,

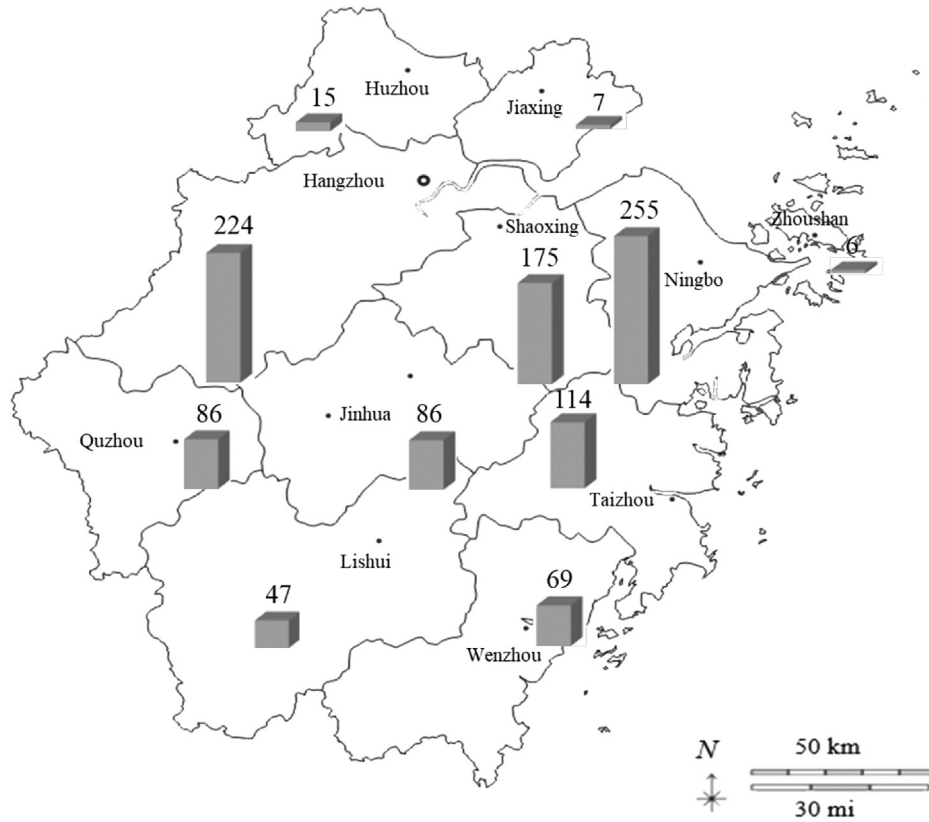


Fig. 4– The distribution of NTM in Zhejiang province.

Table 3 – The comparison of NTM distribution of pulmonary cases from various studies.

District/nation	year	NTM proportion	Species rank	methods	source
China, Zhejiang province	2009-2019	4.8% (1,112/23,138)	<i>M. intracellulare</i> (54.81%); <i>M. chelonae</i> and <i>M. abscessus</i> (16.52%); <i>M. avium</i> (13.16%); <i>M. kansasii</i> (8.17%)	CapitalBio Mycobacterium identification assay	This study
China	2013	6.4% (317/4,917)	MABC (36.0%); MAC (34.1%); <i>M. kansasii</i> (9.8%); <i>M. parafortuitum</i> (5.4%)	MALDI-TOF MS	21
China, Fujian province	2011	4.2% (60/1,425)	<i>M. intracellulare</i> (68.3%); <i>M. abscessus</i> (10.0%); <i>M. avium</i> (6.7%); <i>M. kansasii</i> (6.7%); MAC (44.5%); MABC (40.5%); <i>M. kansasii</i> (10.0%); <i>M. fortuitum</i> (2.8%)	16S rRNA, <i>hsp65</i> , <i>rpoB</i> , 16S-23S rRNA ITS	22
China, Guangdong province	2013-2016	-	MAC (44.5%); MABC (40.5%); <i>M. kansasii</i> (10.0%); <i>M. fortuitum</i> (2.8%)	-	27
Japan	2006-2016	-	MAC (87.3%); MABC (5.5%); <i>M. kansasii</i> (3.9%)	-	28
America	2005-2015	-	MAC (83.2%); <i>M. kansasii</i> (7.7%); <i>M. abscessus</i> (3.4%)	-	29
Northern Tunisia	2019	0.6% (60/10,466)	<i>M. kansasii</i> subtype 1 (23.3%); <i>M. fortuitum</i> (16.6%); <i>M. novocastrense</i> (16.6%); <i>M. chelonae</i> (10.0%);	<i>rpoB</i> , 16S rRNA, <i>hsp65</i> , <i>sodA</i>	23
Ghana	2017	2.5% (43/1,755)	<i>M. intracellulare</i> (41.9%); <i>M. avium</i> subsp <i>paratuberculosis</i> (30.2%); <i>M. abscessus</i> (11.3%); <i>M. mucogenicum</i> (7.0%)	IS6110, <i>hsp65</i>	13
Korea	2009	7.1% (68/958)	<i>M. abscessus</i> (31%); <i>M. fortuitum</i> (15%); <i>M. avium</i> complex (8%); <i>M. gordonae</i> (8%);	<i>rpoB</i>	24
Iran	2018	15.1% (62/410)	<i>M. simiae</i> (38.7%); <i>M. fortuitum</i> (19.3%); <i>M. kansasii</i> (17.7%); <i>M. avium</i> complex (8.0%);	16S rRNA, <i>rpoB</i> , <i>hsp65</i> , ITS	20

which is very similar to pulmonary TB clinically. Another uncommon pulmonary manifestation is nodular bronchiectasis. Extrapulmonary manifestations are even rarer, including lymphadenitis, skin and soft-tissue infections, and disseminated disease.³⁵

Correct identification of NTM is important, as it can predict the clinical relevance of an isolate as well as aid in the selection of a treatment regimen. Both molecular and mass spectrometry-based methods can be applied. Molecular identification is the preferred method, and it can be achieved by using probes or through gene sequencing. Probe-based assays are easier to perform and implement. Meanwhile, gene sequencing allows a higher level of discrimination, often up to subspecies level, but it is only feasible for laboratories with access to sequencing facilities. Thus, the probe-based assays are easier to popularize.

Microarrays are a valuable tool for the specific detection of microorganisms directly from clinical samples. Compared with other assays, the CapitalBio *Mycobacterium* identification array system shows higher sensitivity and specificity.³⁶ It has been reported that the sensitivity and specificity of the CapitalBio *Mycobacterium* identification microarray system were 99.6% and 100%, respectively, compared with the results of 16S rRNA gene sequencing when used with clinical isolates from respiratory specimens.¹⁶ Interestingly, it can identify up to 17 *Mycobacterium* species. The microarray method can detect more than 98% of the pathogens of pulmonary diseases. Thus, only a few mycobacterium pathogens cannot be identified. Therefore, the identification method we have been using for 10 years is reliable and is significant in rapid NTM classification, understanding of its prevalence, and clinical diagnosis and treatment.

This study has several limitations. First, the array method cannot identify *M. chelonae*-*M. abscessus*, *M. marinum*/*M. ulcerans*, and *M. szulgai*/*M. malmoense* at species level. Second, our study is a descriptive study; we did not perform gene sequencing at the same time to verify the accuracy of the microchip method. Third, the sociodemographic, clinical and radiological data are not detailed available, as the NTM isolates were collected from many hospitals in the province and transported to the Center for Disease Control and Prevention in Zhejiang province. The pathogens of NTM pulmonary diseases were collected and identified to species level to provide guidance for clinical treatment. Fourth, in this study, although at least two sputum specimens for positive culture were collected for all patients, only one sample was sent to us for identification. Therefore, most patients did not have two consistent identifications for NTM, so in the strict sense, not all patients were identified as NTM pulmonary disease, since the guide on the diagnosis and treatment of NTM disease in China requires two sputum specimens collected separately were positive for NTM culture and identified as the same pathogen.^{37,38}

In conclusion, the misdiagnosis of NTM among suspected pulmonary TB patients has highlighted the urgent need for sensitive, reliable, and fast methods for the laboratory detection of mycobacteria. This study demonstrates that the CapitalBio *Mycobacterium* identification array system is a reliable and rapid approach for the identification of the most frequently isolated mycobacteria. The distribution of NTM can provide a reference for the diagnosis and treatment of NTM pulmonary diseases.

Funding

This research did not receive any specific grant from funding agencies in the public, commercial, or not-for-profit sectors.

Conflicts of interest

The authors declare no conflicts of interest.

Acknowledgement

None.

REFERENCES

1. Porvaznik I, Solovič I, Mokry J. Non-tuberculous mycobacteria: classification, diagnostics, and therapy. *Adv Exp Med Biol.* 2017;944:19–25.
2. Yu XL, Lu L, Chen GZ, et al. Identification and characterization of non-tuberculous mycobacteria isolated from tuberculosis suspects in Southern-central China. *PLoS One.* 2014;9:e114353.
3. Daley CL, Iaccarino JM, Lange C, et al. Treatment of nontuberculous mycobacterial pulmonary disease: an official ATS/ERS/ESCMID/IDSA Clinical Practice Guideline: executive summary. *Clin Infect Dis.* 2020;71:e1–e36.
4. Lai CC, Tan CK, Chou CH, et al. Increasing incidence of nontuberculous mycobacteria, Taiwan, 2000–2008. *Emerg Infect Dis.* 2010;16:294–6.
5. Marras TK, Mendelson D, Marchand-Austin A, May K, Jamieson FB. Pulmonary nontuberculous mycobacterial disease, Ontario, Canada, 1998–2010. *Emerg Infect Dis.* 2013;19:1889–91.
6. Brode SK, Marchand-Austin A, Jamieson FB, Marras TK. Pulmonary versus nonpulmonary nontuberculous mycobacteria, Ontario, Canada. *Emerg Infect Dis.* 2017;23:1898–901.
7. Gopinath K, Singh S. Non-tuberculous mycobacteria in TB-endemic countries: are we neglecting the danger? *PLoS Negl Trop Dis.* 2010;4:e615.
8. Tortoli E, Mariottini A, Mazzarelli G. Evaluation of INNO-LiPA MYCOBACTERIA v2: improved reverse hybridization multiple DNA probe assay for mycobacterial identification. *J Clin Microbiol.* 2003;41:4418–20.
9. van Ingen J, Turenne CY, Tortoli E, Wallace Jr. RJ, Brown-Elliott BA. A definition of the *Mycobacterium avium* complex for taxonomical and clinical purposes, a review. *Int J Syst Evol Microbiol.* 2018;68:3666–77.
10. van Ingen J, Bendien SA, de Lange WC, et al. Clinical relevance of non-tuberculous mycobacteria isolated in the Nijmegen-Arnhem region, the Netherlands. *Thorax.* 2009;64:502–6.
11. Jankovic M, Sabol I, Zmak L, et al. Microbiological criteria in non-tuberculous mycobacteria pulmonary disease: a tool for diagnosis and epidemiology. *Int J Tuberc Lung Dis.* 2016;20:934–40.
12. Duan H, Han X, Wang Q, et al. Clinical significance of nontuberculous mycobacteria isolated from respiratory specimens in a Chinese tuberculosis tertiary care center. *Sci Rep.* 2016;6:36299.
13. Otchere ID, Asante-Poku A, Osei-Wusu S, Aboagye SY, Yeboah-Manu D. Isolation and characterization of

- nontuberculous mycobacteria from patients with pulmonary tuberculosis in Ghana. *Int J Mycobacteriol.* 2017;6:70–5.
14. Abe C, Hirano K, Tomiyama T. Simple and rapid identification of the *Mycobacterium tuberculosis* complex by immunochromatographic assay using anti-MPB64 monoclonal antibodies. *J Clin Microbiol.* 1999;37:3693–7.
 15. Manta FSN, Leal-Calvo T, Moreira SJM, et al. Ultra-sensitive detection of *Mycobacterium leprae*: DNA extraction and PCR assays. *PLoS Negl Trop Dis.* 2020;14:e0008325.
 16. Liu J, Yue J, Yan Z, et al. Performance assessment of the CapitalBio mycobacterium identification array system for identification of mycobacteria. *J Clin Microbiol.* 2012;50:76–80.
 17. Shi XC, Liu XQ, Xie XL, Xu YC, Zhao ZX. Gene chip array for differentiation of mycobacterial species and detection of drug resistance. *Chin Med J (Engl).* 2012;125:3292–7.
 18. Huang JJ, Li YX, Zhao Y, et al. Prevalence of nontuberculous mycobacteria in a tertiary hospital in Beijing, China, January 2013 to December 2018. *BMC Microbiol.* 2020;20:158.
 19. Altschul SF, Gish W, Miller W, Myers EW, Lipman DJ. Basic local alignment search tool. *J Mol Biol.* 1990;215:403–10.
 20. Nasiri MJ, Dabiri H, Fooladi AAI, Amini S, Hamzehloo G, Feizabadi MM. High rates of nontuberculous mycobacteria isolation from patients with presumptive tuberculosis in Iran. *New Microbes New Infect.* 2018;21.
 21. Liu CF, Song YM, He WC, et al. Nontuberculous mycobacteria in China: incidence and antimicrobial resistance spectrum from a nationwide survey. *Infect Dis Poverty.* 2021;10:59.
 22. Lin S, Wei S, Zhao Y, Lin J, Pang Y. Epidemiology of human pulmonary infection with nontuberculous mycobacteria in Southeast China: a prospective surveillance study. *Infect Drug Resist.* 2019;12.
 23. Gharbi R, Mhenni B, Ben Fraj S, Mardassi H. Nontuberculous mycobacteria isolated from specimens of pulmonary tuberculosis suspects, Northern Tunisia: 2002–2016. *BMC Infect Dis.* 2019;19:819.
 24. Jun HJ, Jeon K, Um SW, Kwon OJ, Lee NY, Koh WJ. Nontuberculous mycobacteria isolated during the treatment of pulmonary tuberculosis. *Respir Med.* 2009;103:1936–40.
 25. Zweijpfenning SMH, Ingen JV, Hoefsloot W. Geographic distribution of nontuberculous mycobacteria isolated from clinical specimens: a systematic review. *Semin Respir Crit Care Med.* 2018;39:336–42.
 26. Lai CC, Hsueh PR. Diseases caused by nontuberculous mycobacteria in Asia. *Future Microbiol.* 2014;9:93–106.
 27. Tan Y, Su B, Shu W, et al. Epidemiology of pulmonary disease due to nontuberculous mycobacteria in Southern China, 2013–2016. *BMC Pulm Med.* 2018;18:168.
 28. Furuuchi K, Morimoto K, Yoshiyama T, et al. Interrelational changes in the epidemiology and clinical features of nontuberculous mycobacterial pulmonary disease and tuberculosis in a referral hospital in Japan. *Respir Med.* 2019;152:74–80.
 29. Abate G, Stapleton JT, Roupheal N, et al. Variability in the management of adults with pulmonary nontuberculous mycobacterial disease. *Clin Infect Dis.* 2021;72:1127–37.
 30. Griffith DE, Aksamit T, Brown-Elliott BA, et al. An official ATS/IDSA statement: diagnosis, treatment, and prevention of nontuberculous mycobacterial diseases. *Am J Respir Crit Care Med.* 2007;175:367–416.
 31. Lopeman RC, Harrison J, Desai M, Cox JAG. *Mycobacterium abscessus*: Environmental Bacterium Turned Clinical Nightmare. *Microorganisms.* 2019;7:90.
 32. Shen Y, Wang X, Jin J, et al. In vitro susceptibility of *Mycobacterium abscessus* and *Mycobacterium fortuitum* isolates to 30 antibiotics. *Biomed Res Int.* 2018;2018.
 33. Hoefsloot W, van Ingen J, Andrejak C, et al. The geographic diversity of nontuberculous mycobacteria isolated from pulmonary samples: an NTM-NET collaborative study. *Eur Respir J.* 2013;42:1604–13.
 34. Thomson R, Tolson C, Huygens F, Hargreaves M. Strain variation amongst clinical and potable water isolates of *M. kansasii* using automated repetitive unit PCR. *Int J Med Microbiol.* 2014;304:484–9.
 35. Bakula Z, Kościuch J, Safianowska A, et al. Clinical, radiological and molecular features of *Mycobacterium kansasii* pulmonary disease. *Respir Med.* 2018;139.
 36. Kim SH, Shin JH. Identification of nontuberculous mycobacteria from clinical isolates and specimens using advanced mycobacteria genoblot assay. *Jpn J Infect Dis.* 2020;73:278–81.
 37. Chinese Society for Tuberculosis, Chinese Medical Association, The Editorial Board of Chinese Journal of Tuberculosis and Respiratory Diseases. Expert consensus on diagnosis and treatment of non tuberculous mycobacterial disease. *Chin J Tubercul Resp Dis.* 2012;35:572–80.
 38. Chinese Society for Tuberculosis, Chinese Medical Association. Guidelines for diagnosis and treatment of nontuberculous mycobacterial diseases (2020 Edition). *Chin J Tubercul Resp Dis.* 2020;43:918–46.