

Improved Mental Health, Social Connections and Sense of Self: A Mixed Methods Systematic Review Exploring the Impact and Experience of Community Reminiscence Programs

Robert John Laidlaw, Richard McGrath*, Caroline Adams*, Saravana Kumar *, Carolyn M Murray 

Allied Health and Human Performance, IIMPACT in Health, University of South Australia, Adelaide, South Australia, 5001, Australia

*These authors contributed equally to this work

Correspondence: Carolyn M Murray, Senior Lecturer, Occupational Therapy Program, University of South Australia, PO Box 2471, Adelaide, South Australia, 5001, Australia, Email carolyn.murray@unisa.edu.au

Abstract: Older people can experience health and social challenges such as loneliness, depression, and lack of social connectedness. One initiative that has been trialed to address these challenges is reminiscence programs. These programs can include music, art, photographs, sports, and general discussion to stimulate memories. This review aimed to systematically search for literature that explored the impact and experience of reminiscence programs for older people living in the community for the purposes of informing community programming. The PICOS framework was used to develop the review parameters and search strategy. Qualitative and quantitative research focused on community-based reminiscence programs were included. Commercially produced databases and grey literature were searched. The Critical Appraisal Skills Program qualitative critical appraisal tool and McMaster quantitative critical appraisal tool were used to assess the methodological quality of the included studies. Quantitative data were descriptively synthesized, and qualitative data were thematically analyzed, with each reported separately. Twenty-seven studies were included in the review. All quantitative studies ($n = 17$) provided clear information regarding the purpose, sample size, and justification. The measures adopted were reliable and valid. All studies reported clear data collection/analysis information and statistically significant findings. All qualitative studies ($n = 10$) clearly articulated a purpose with nine clearly describing recruitment, data collection, and researcher relationship. Synthesis of quantitative data demonstrated positive findings through a reduction in depression, anxiety, and loneliness and improvements in quality of life and mastery. These findings were supported and broadened by qualitative findings with three key themes identified: program processes, program ingredients, and program benefits. Providing opportunities for older adults to come together to tell stories about their past experiences may positively contribute to social outcomes. As reminiscence programs gain popularity, their implementation in practice should be underpinned by clear and reproducible practices.

Keywords: health, loneliness, depression, quality of life, relationships

Introduction

The population across the Western world is ageing.¹ This demographic shift is changing the health and social care needs of communities, creating a need to address complex health and social issues, such as loneliness and decline in abilities.² Being connected with others is purported as one potential way of helping older people with maintaining their mental and social health.³ Reminiscence can provide social connectedness and belonging as it gives an opportunity to express views and feelings.⁴ Reminiscence involves thinking about past experiences and sharing these memories with others.⁵ If conducted in a group setting reminiscence can bring people together and create friendships through story-telling and through shared past experiences.⁶

Through his Life Review work, Butler⁷ identified that older people who reminisce may have beneficial outcomes, including stronger relationships, which can reduce mental health issues such as depression. In addition, reminiscence programs can have a role in promoting self-worth and a sense of self through the process of looking back over their life.⁸ An initial exploration of literature about reminiscence programs indicated that programs were often designed for people living with dementia.^{9–11} Programs may be delivered in ways that are focused and structured, or more fluid and organic, and they may reminisce using topics and activities such as art, drama, music, and sports.^{12–16}

Reminiscence research has focused on issues such as depression, anxiety, loneliness, and well-being as well as improving memory or cognition of older people.^{17,18} Reminiscence research has been conducted in both aged care and community settings.^{5,17} Although older people may reside in care homes for older people, a relatively large proportion reside at home^{1,19,20} and, as such most reminiscence programs are designed for community dwelling older people.⁵ Despite the apparent value of reminiscence programs and the growing body of research,²¹ to date there does not appear to have been a systematic review of community-based reminiscence programs. The aim of this systematic review was to explore participants' experiences of, and outcomes from, community-based reminiscence programs. The review question is: “What is the impact of, and experience from, community-based reminiscence programs for older adults?”

Methods

Protocol

This systematic review was conducted in accordance with the PRISMA framework.²² The protocol for this review was registered with Open Science Framework. The registration DOI is <https://doi.org/10.17605/OSF.IO/TGFD9>

Eligibility Criteria

As the focus of the Systematic Review was to explore outcomes for and experiences of reminiscence program participants, both qualitative and quantitative research were included. As reminiscence is about remembering the past, programs designed to stimulate the recollection of those memories were considered. Only primary research was included, involving both individuals and groups, with programs using any topics or activities for reminiscence. Older people aged 50 years of age and over were the primary participants of interest. Exclusions included opinions, editorials, commentaries, and studies involving people under 49 years.¹⁵ Example outcomes of interest included social connections, loneliness, boredom and mood. Given the broad psycho-social focus of this review, studies that included reminiscence programs aimed at improving memory and retention were excluded because of their narrow focus.

Search Strategy

The PICOS framework was used to develop the review parameters and the search strategy (see Table 1). The following electronic databases were searched: OVID: MEDLINE, EMBASE, EMCARE; ProQuest, The Cochrane Library, SPORTDiscus, PsychInfo, Web of Science, Ageline. These databases were chosen as they contain much of the health

Table 1 PICOS Framework

Construct	Inclusion	Exclusion	Keywords/MESH	Limits
Population	Adult participants	Children under 18	Adults/	English humans
Intervention	Community reminiscence programs	Age care facilities, clinical settings.	Reminis* OR memor* program* OR nostalgi*	English humans
Comparison	Nil	Nil	Nil	
Outcomes	Included but not limited to Psychosocial factors (ie depression, loneliness)	Cost effectiveness		
Study Designs	Qualitative and quantitative	Opinions, editorials, commentaries		

Note: *Truncation allows for variations in word endings within search.

literature and are inclusive of single and multi-disciplinary databases. As a means of avoiding publication and location bias, the review also included searching of grey literature, including an internet search engine (Google), Trove, ProQuest and relevant aged care, dementia care and health websites in some Western countries (Australia, New Zealand, United Kingdom, and United States of America). Reference lists from systematic reviews and included articles were also searched.

Study Screening

Following completion of the searches, citations were initially exported to Endnote™ (<https://endnote.com/>) and Covidence™ (<https://www.covidence.org/au>), for collating references and screening process. An initial screening of title and abstracts determined the most relevant studies which then advanced to full-text screening. All screenings were undertaken by RL, with CM, CA, RM and SK equally sharing the screening, with conflicts resolved through discussion among the group.

Quality Assessment

The Critical Appraisal Skills Program (CASP) tools (<https://casp-uk.net/casp-tools-checklists/>) were used to critically appraise the included qualitative studies. The CASP tools were chosen as these are widely used, freely available and include different critical appraisal tools for varying study designs, and the researchers have experience in using these tools. The CASP tools include a yes/no/cannot tell response, which enabled comparison between the included studies. For the quantitative studies, the McMaster critical appraisal tool was used.²³ The McMaster critical appraisal tool was chosen because of its reliability to determine methodological quality and is widely used, freely available, and includes different critical appraisal tools for varying study designs. The researchers have experience in using these tools. The McMaster critical appraisal tools include a yes/no/n-a response, which enables comparison between the included studies. Each included study was independently appraised by two reviewers (RL, CM, CA, RM, SK), and results compared. Discrepancies were resolved through discussion and if not possible, a third reviewer provided the final decision.

Data Extraction and Analysis

As the review question had two components “impact” and “experience”, this mixed methods systematic review adopted a convergent segregated data extraction and analysis approach.²⁴ Data extraction was done systematically from each article, with quantitative and qualitative data compiled separately.²⁴ Data extraction for all studies was completed by the first author with duplicate extraction shared among the other authors. Data were extracted about study characteristics included sample sizes; settings; population; description of programs; type of media used; methods of data collection; and results. Quantitative data were extracted according to outcome measures used and organized into findings of significance or otherwise. After extraction, quantitative data were examined, synthesized and summarized descriptively. Qualitative data were extracted that included information about experiences of reminiscence programs. These data were extracted into tables with each data section assigned a code. The tables were printed, and the research team met to manually sort the qualitative data into categories. Through a process of writing up the categories, data were further synthesized and reduced to descriptive themes.²⁵

Results

Study Selection

Searching of the literature yielded 6137 citations, and following the title and abstract screening there were 102 articles for full-text screening. Of these, twenty-six studies met the inclusion criteria. One additional study was identified during citation searching, which resulted in 27 included studies for this review (Figure 1).

Study Characteristics

As reported in Table 2, 17 quantitative,^{13,26–41} and 10 qualitative^{6,8,14,42–48} studies were included in the review. In the quantitative studies, 12 studies used a randomized controlled design ($n = 8$)^{30–35,37,40} or quasi-experimental

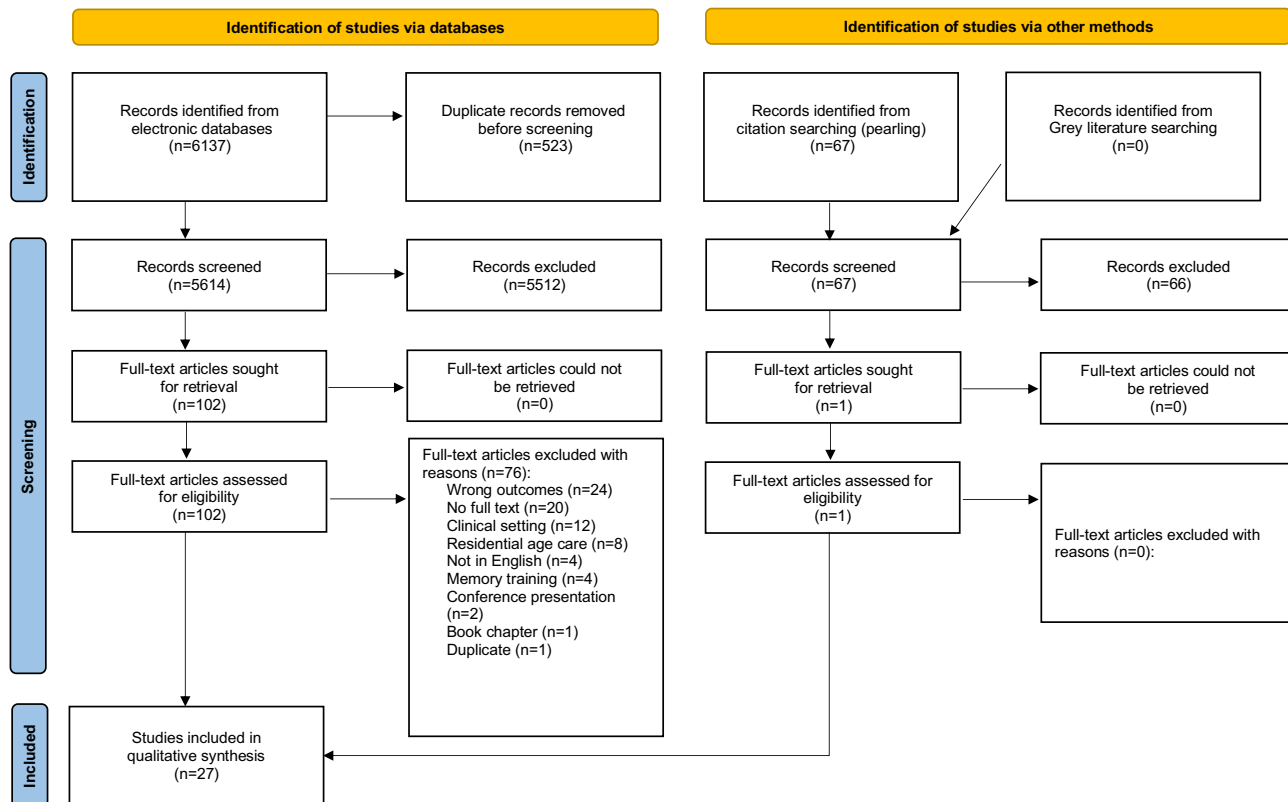


Figure 1 PRISMA flow diagram. Adapted from Moher, D., Liberati, A., Tetzlaff, J., Altman DG & the PRISMA Group. Reprint—Preferred Reporting Items for Systematic Reviews and Meta-Analyses: The PRISMA Statement. *Physical Therapy*. 2009;89(9): 873-880. Creative Commons.²²

design (n = 4),^{13,29,36,39} as well as four,^{26,27,38,41} pre-post case studies and one²⁸ controlled clinical trial. Four of the qualitative papers did not state their methodology,^{6,43,45,48} two used ethnography,^{44,46} one was participatory action research,⁴² one was qualitative descriptive,⁸ one was phenomenology,¹⁴ and one was qualitative realist.⁴⁷ The methods of data collection used in the qualitative studies were participant observations (n = 5),^{8,44,46–48} interviews (n = 4),^{42,44,46,48} audio/recordings (n = 3),^{14,43,48} online posts,⁴⁴ and yarning,⁴⁵ while in one study had participants writing stories.⁶

Most studies were dated from between 2011 and 2021 with one study from 1987³⁵ and one from 1993.³⁶ Two studies used a single reminiscence session,^{41,48} with all other studies accumulating results from multiple reminiscence sessions. Two authors had both a quantitative study^{34,41} and qualitative study included in the review.^{8,48} Thirteen studies were conducted in the USA,^{6,8,14,31,32,34–36,39,41–43,48} three in Japan^{27,28,44} and China,^{33,38,40} two in the Netherlands^{26,30} and United Kingdom^{37,46} and one each in South Korea,²⁹ Australia,⁴⁵ Singapore¹³ and Scotland.⁴⁷

Reminiscence Program Characteristics

Across the 27 studies it was found that both structured and semi-structured reminiscence programs were used with details provided in Table 3. The use of the manualized life review technique was common (n = 13)^{8,14,26–28,30,32,34–36,38,39,42} with these programs being structured, discussion-based and outcomes-focused, while one program had a focus on mattering.³¹ Some of the other reminiscence programs were activity based with sensory and social elements. Activities included the use of slide/tape/photographs (n = 10),^{6,29,36,38,40,41,43,45,47,48} music/art/creativity (n = 6),^{13,14,29,37,40,42} physical activity (n = 4);^{13,33,37,46} socializing or making friends (n = 4),^{8,27,28,35} telling stories (n = 3),^{6,26,30} smelling objects (n = 2),^{27,28} writing/blogging (n = 2);^{6,44} visiting a museum and handling objects (n = 2);^{41,48} gardening (n = 1);²⁹ discussion (n = 1),⁴⁷ and yarning (n = 1).⁴² Areas of focus for reminiscence program included past sporting experiences,^{45–47} vintage automobiles⁴³ and classic photography (old cameras).^{41,48}

Table 2 Study Characteristics

Author & Year	Country	Study Aim	Study Design	Method	Participants Details	Sample Size	Age Range	Gender
Allen et al 2016 ⁴²	USA	To describe the experience of RSVs	Community-based participatory research	Feedback meetings and individual interviews	RSVs who delivered the program	Feedback meeting = 45 interview = 6	Not given	Not given
Anderson & Weber. 2015 ⁴³	USA	To assess the feasibility and tolerability of a reminiscence program	N/S Qualitative.	Sessions were audio-recorded	Volunteers at retirement village	19	80–99	10 w, 9 m
Bohlmeijer. 2009 ²⁶	Ned	To explore the effects of a reminiscence on depressive symptoms	Case study pre-post	CES-D + PMS outcome measures	Volunteers with depressive symptoms	108 (65 program; 43 control)	55–87 Mean: 63.8	Program: 48 w; 17 m; Control: 36 w 7 m
Chonody. 2013 ⁶	USA	To evaluate an intergenerational reminiscence program	N/S Qualitative	Stories, focus groups and responses on social media	Senior community centre	26 (182 stories) 8 across 2 focus groups	65–85	19 w, 7 men
Hanaoka. 2011 ²⁸	Japan	Effects of odor stimulation in a group reminiscence program	Case study pre Post	GDS-15; LSI-K	Community-dwelling volunteers	22	Mean age: 76.8	17 w, 5 m
Hanaoka. 2018 ²⁷	Japan	Effects of odor stimulation in a group reminiscence program	Controlled pre post clinical trial	GDS – 15. Five-cog Test	Community dwelling volunteers	60 (27 program; 33 control)	Program (mean 78.4). control (mean 75.4)	Program: 22 w, 5 m; Control: 24 w, 9 m
Jo. 2015 ²⁹	South Korea	Effects of reminiscence therapy on depression, quality of life, ego-integrity, social behaviour, and ADLs	Single pre-test post test	SF- GDS; LSI-A: EIS; SBFS; BI	PwD Registered to a mental health center.	19	56–87 years	14 w, 5 m
Kanayama. 2003 ⁴⁴	Japan	To explore the online experience in virtual communities	Ethnography	Observation of messages and in-depth interviews	Anyone 65 or older	13 interviews; 220 messages	65-plus	Interviews = 6 w; 7 m
Korte. 2012 ³⁰	Ned	To longitudinally investigate mediators of a life-review intervention on depression and anxiety	Randomized Controlled Trial	CES-D; HADS-A; RFS; MLQ; ATQ-P; PMS across 3 time points	Mild to moderate depressive symptoms and aged 55 +	202	55–83 (mean 63)	77% w, 23% m

(Continued)

Table 2 (Continued).

Author & Year	Country	Study Aim	Study Design	Method	Participants Details	Sample Size	Age Range	Gender
Lukow. 2013 ³¹	USA	To examine if wellness was enhanced through the promotion of a sense of mattering to others	Randomized Controlled Trial using pre-post measures	5F-WEL and Mattering Index	Residents of a retirement community	19 (10 control and 9 intervention)	76–95 (mean 83.26)	15 w, 4 m
Osmond. 2018 ⁴⁵	Aust	To explore the lived experiences and memories of Aboriginal women	Qualitative (Yarning sessions for oral history)	Two separate yarning sessions were observed	Members of Marching Girls groups (1950s and 1960s)	14	60-plus	14 w
Pearson. 2006 ³²	USA	The efficacy integrative reminiscence on depression, acceptance of the past and mastery	Randomised controlled trial pre-post measures	GDS; APS and PMS	Community-dwelling elderly individuals	36 (13 exp; 11 received CBT and 12 brochures)	60–85 (mean 82)	34 w, 2 m
Rawtaer. 2015 ¹³	Sing	To examine the impact of four psychosocial interventions on mental health	Pre post with repeated measures	GDS; GAI; MMSE; SDS; SAS at 4 time points over 1 year	Older people with depression and anxiety	101 (29 music; 21 tai chi; 24 mindfulness and 27 art)	Mean 71 SD 5.95 (no range given)	76 w, 25 m
Ren. 2021 ³³	China	Effect of reminiscence therapy on spiritual wellbeing	Randomized controlled trial	SIWB; ULS; BRS	Community dwelling volunteers	Exp = 60; Ctl = 61	60-plus	Exp: 28 w, 32 m; Ctl: 31 w, 30 m
Sass. 2021 ⁴⁶	UK	To determine what attending a reminiscence group meant to men living with dementia	Ethnography,	Participant observation; interviews	12 PwD 9 without dementia 13 spouses 12 facilitators	46	59-82 – m PwD; 60-82 – f spouse; 64-75 – other m	20 w 26 m
Shellman. 2011 ⁸	USA	To explore perceived benefits and functions of reminiscence	Qualitative descriptive	Six focus groups and participant observations	Community-dwelling older African Americans	52	Over 60 (mean 72)	90% w
Shellman. 2009 ³⁴	USA	To evaluate the effects of integrative reminiscence on depressive symptoms	Randomised controlled trial	CES-D at 3 points	Community-dwelling older African Americans	56 across intervention and 2 x controls	Over 60, mean age 72.6	43 w, 13 m
Sherman. 1987 ³⁵	USA	To measure thoughts and feelings in the reconstruction of the past	Randomised controlled trial	Friends made and enjoyment LSI -Z; MSCM	Older people from 4 community settings	104	60–91 Mean: 73.8	88 w, 15 m

Smiraglia. 2015 ⁴¹	USA	To examine mood changes from museum reminiscence program	Pre-test /post-test design with repeated measures	A short scale to measure 3 dimensions of mood	Older people from 12 retirement communities	114	42–105. Mean: 83	74% w
Smiraglia. 2015 ⁴⁸	USA	To explore how participants reacted to a museum reminiscence program	Qualitative	Recordings, interviews, observations	Older people from 12 retirement communities	114	42–105 (mean 83)	74% w
Somody. 2010 ¹⁴	USA	To explore the experiences of a reminiscence program	Phenomenology	Recordings of sessions	Community-dwelling older women	6	74–86	6 w
Stevens-Ratchford. 1993 ³⁶	USA	The effect of life review reminiscence on depression and self-esteem	Pre post with repeated measures	SES; BDI	Community dwelling older adults	24 (12 exp; 12 ctl)	69–91 mean 79.75	16 w, 8 m
Tolson-Schofield. 2011 ⁴⁷	Scot	To evaluate the benefits of football-related reminiscence	Qualitative Realist evaluation.	Field notes	PwD	Participant numbers not given	Not given.	Men.
Woods. 2012 ³⁷	UK	To evaluate quality of life and stress	RCT - measures at 3 time points	QoL- AD; EQ-5D	PwD and carers	487	PwD = 56 –93 (mean 77.5)	242 w, 243 m (PwD)
Wu. 2017 ³⁸	China	To understand the relationship between verbal response and emotional state	Pre-test/post-test design with repeated measures	GDS, SAS; RFS; CERQ	Women with depressive symptoms	27	60–75 (mean 65.26 SD 4.32)	27 w
Zauszniewski. 2004 ³⁹	USA	To examine effect of program on negative emotions	Pre-test/ post-test	ESC, CES-D, SAS, HADS	Older people	43	67–98 (mean 84)	34 w, nine m
Zhou. 2011 ⁴⁰	China	The effects of group RT on depressive symptoms, self-esteem, and affect	Randomised control trial	GDS; SES; ABS	Community depressive symptoms	59 in exp group	60+ mean = 69.75 (SD 6.56)	34 w, 25 m

Abbreviations: ABS, affect balance scale; ADLs, activities of daily living; APS, accepting the past scale; ATQ-P, automatic thoughts questionnaire positive; Aust, Australia; BDI, Beck Depression Inventory; BI, Bartel index BRS, brief resilience scale; CERQ, cognitive emotional regulation questionnaire; CES-D, Centre of Epidemiology Studies Depression Scale; CBT, Cognitive Behavioural Therapy; CSRI, client services receipt inventory; Ctl, control; ESC, emotional symptom checklist; EQ-5D, European quality of life 5 dimensions; Exp, experimental; 5F-WEL, Five Factor Wellness Inventory; HADS-A, hospital anxiety and depression scale (A); GDS, geriatric depression scale; GAI, Geriatric Anxiety Inventory; GHQ, general health questionnaire; HADS, hospital anxiety depression scale; LSI-A, Life satisfaction index (A); LSI-K, life satisfaction index (K); LSI-Z, Life satisfaction index (Z); m, men; MLQ, Meaning in life questionnaire; MSCM, Monge Self Concept Measure; MMSE, Mini-mental state examination; Ned, Netherlands; PwD, people with dementia; PMS, Pearlin Mastery Scale (beliefs about control over environment); RT, reminiscence therapy; SAS, Zung self-rating anxiety scale; SDS, Zung self-rating depression scale; SD, standard deviation; SES, Rosenberg self-esteem scale; SIWB= Spirituality Index of Well-Being; SBFS, social behavior function scale; RFS, Reminiscence Function Scale; Scot, Scotland; Sing, Singapore; UK= United Kingdom; ULS – UCLA Loneliness Scale – 8; USA, United States of America; w, women.

Table 3 Reminiscence Program Characteristics

Author	Program Content	Program Type	Program Aim	Location	Mode	Frequency	Who Delivered	Duration
Allen et al 2016 ⁴²	Reminiscence and creative activities	The manualized LIFE program	Social belonging, identity, and life review	Home visits	One volunteer with one palliative care pt and caregiver	Three sessions	Retired Senior Corps Volunteers	Not given
Anderson & Weber. 2015 ⁴³	Showing photographs of cars	Sitting with facilitator at a computer	Give entry point to reminiscence	Home (retirement center)	One-on-one sessions	One to two sessions each	The researchers	Between 33–63 mins
Bohlmeijer. 2009 ²⁶	Theme based story-telling	Integrative reminiscence narrative therapy	Life evaluation integrating negative life events	N/S Community based	Groups with a maximum of 4 people	Weekly	A counsellor	8 x 2-hour sessions
Chonody. 2013 ⁶	Writing shared with group and blogging online	Group reminiscence using storytelling	Empower older people and connect to others	Senior center plus outings	A face-to-face open group	Weekly for 10 months	Group leader and volunteers	90 mins
Hanaoka. 2011 ²⁸	Social theme based life review using odor	RT based on psychological therapy	Improve depression, psychological wellbeing	RT center	Groups of 4 to 6 older people	8 fortnightly sessions held over 4 months	Staff member and older adult co-leader	90 mins
Hanaoka. 2018 ²⁷	Social theme based life review using odor	RT based on psychological therapy	Maintain mental health, wellbeing and cognition	7 regional community center	Group of 4–6 older people	8 fortnightly sessions held over 4 months	Nurses or care workers	90 mins
Jo. 2015 ²⁹	Theme based with music, art, photos, gardening	Group Reminiscence with focus on life stages	To decrease depression and increase quality of life, EI, SS, ADLs	Mental health center	Single group with 19 people ^b	8 sessions over 2 months	Not stated	2.5 hours
Kanayama. 2003 ⁴⁴	Topics, books, questions, sharing, trivia; problems	Unstructured Daily messages posted online	To construct online social support relationships	Online	Virtual community	Daily for 10 months	A non-active participant and volunteers	Not applicable
Korte. ^a 2012 ³⁰	Integration of life events, stories, goals, discussion	Life-review reminiscence	To cope with present life events and form goals	Mental healthcare institutions	Groups of 4 to 6 older people	Not stated	Psychologists and other therapists	8 two-hour sessions
Lukow. 2013 ³¹	Based on four tenets of mattering	Structured group reminiscence	To create greater sense of mattering	Club at retirement community	Group program face to face	10 sessions over 5 weeks	Two counselors	105 mins

Osmond 2018 ⁴⁵	Discussion using photographs of marching girls	Informal	To elicit value and meaning of marching	Community	Face to face in groups	2 consecutive days	Aboriginal Elder	Over 2 hours each session
Pearson. 2006 ³²	Themes such as family, turning points, emotions, stress, meaning	Life Review using a guided autobiographical approach	To reintegrate past events into ones' life and examine them	At home or senior center	3 randomly assigned groups	Once a week for 6 weeks	Psycho-therapist	90 mins
Rawtaer. 2015 ¹³	Four groups - Tai Chi; Mindfulness; Music; Art Therapy	Structured to suit the different groups	Prevention of depression and anxiety	Community health centers	Usually in groups, for four interventions	Intensity decreases over 12 months	Nurses, instructors, and trainers	90–120 mins
Ren. 2021 ³³	Reminiscence discussion in combination with exercise	Structured based on feedback from group	To address healthy aging during covid-19 pandemic	A quiet and spacious room in the community	Face to face in groups	Once a week for 8 weeks	Members of the research team	Exercise: 50–60 mins Control: 45 mins
Sass. ^a 2021 ⁴⁶	Boccia, darts, table tennis, archery, discussion	Structured 'Sporting Memories'	To express masculine identity through sport	Community	Face to face in groups	Weekly for 11 months	Not stated	Two hours
Shellman. 2011 ⁸	Discussion in culturally similar groups	Interpersonal and Integrative reminiscence; life review	To promote positive mental health and well being	Senior centers and churches	Face to face groups	6 one off sessions	An African-American research assistant	Not given
Shellman. 2009 ³⁴	Theme based structured life review questions to facilitate memories	Interpersonal and Integrative reminiscence; life review	To decrease depressive symptoms by reframing thinking	Senior centers or church	Face to face groups	Weekly for 8 weeks	African American research assistants	45 mins
Sherman. 1987 ³⁵	Conversational topics reflecting life stages	Conventional life review	To enhance well-being and build friendships	Home and community	Groups of 6–10 people	10 sessions, either weekly or fortnightly	A social worker	90 mins
Smiraglia. ^a 2015 ⁴¹	A visit to a museum to touch artifacts, such as historic cameras	Semi-structured, allowing for group interests; conversations	To stimulate memory and social interaction; multisensory	Historical museum	Face to face Groups	Single sessions	A museum educator	60 mins

(Continued)

Table 3 (Continued).

Author	Program Content	Program Type	Program Aim	Location	Mode	Frequency	Who Delivered	Duration
Smiraglia. ^a 2015 ⁴⁸	A visit to a museum to touch artifacts, such as historic cameras	Semi-structured allowing for group interests; conversations	To improve participants' mood and socialize	Historical museum	Face to face groups	Single sessions	A museum educator	60 mins
Somody. ^a 2010 ¹⁴	Identifying meaningful music that relate to life themes and goals	Structured. A Musical Chronology and Life song	To facilitate life review and increase wellbeing	A senior community center	Face to face groups	6 group sessions. Twice a week over 3 weeks	A counselor	135 mins
Stevens-Ratchford. 1993 ³⁶	Slide show of past objects, people and events, writing and then discussion	Structured Life Review	To reduce depression and improve self-esteem	N/S Community based	Divided into male and female groups	6 sessions; 2 sessions a week for 3 weeks	Occupational therapist	2 hours each session
Tolson & Schofield ^a 2012 ⁴⁷	Using football images as a basis for discussion	Semi-structured reminiscence	Cognitive stimulation	1 RACF, 2 community 1 home	Group and individual	Established, ongoing	Reminiscence facilitators and volunteers	Ongoing
Woods. ^a 2012 ³⁷	Topics and activities for dyads	Structured, manualized REMCARE	To improve relationships and decrease depression	Community centers	Large and small groups	12 consecutive weeks then monthly for 7 months	Two trained facilitators in each center and volunteers	2 hours
Wu. 2017 ³⁸	Themes using old photographs depicting life stages	Structured RT	To reduce depression and anxiety	Participant homes	Individual	Six sessions over six weeks	A nurse with psychology counseling qualifications	50–60 mins
Zauszniewski. 2004 ³⁹	Lifespan themes used for socialization	Focused reflection reminiscence	To reduce negative emotions	Retirement communities	Focused reflection groups	Weekly for 6 weeks	A psychiatric nurse	90–120 mins per session
Zhou. 2011 ⁴⁰	Health education and weekly topics	RT using psychology	To explore options for high quality community nursing	Community	4 experimental groups and 4 control groups	Weekly for 6 weeks	Trained community nurses	90–120 mins per session

Notes: ^aIndicates programs that were already existing in the community. All other programs were established and implemented for the purposes of the research; ^bAuthor contacted to confirm only one group was conducted (not multiple groups).

Abbreviations: ADLs, activities of daily living; EI, ego integrity; LIFE= Legacy Intervention Family Enactment; mins, minutes; N/S, not stated; pt, patient; RACF, Residential aged care facility; REMAIR, Reminiscence groups for people with dementia and their family caregivers; RT, reminiscence therapy; SS, social skills.

Programs were delivered through group sessions (n = 21),^{6,8,13,14,26–37,39–41,45,46,48} one-on-one (n = 3),^{38,42,43} both group and one-on-one (n = 1)⁴⁷ and one virtual community online.⁴⁴ Most programs consisted of between 6 and 10 sessions, lasting between 45 minutes and two hours. Programs were conducted at community locations, including churches and a museum (n = 13),^{8,13,26,27,33–35,37,41,45–48} at retirement/senior centers or a nursing home (n = 11),^{6,8,14,31,32,34–36,39,43,47} at health service centers (n = 5),^{13,28–30,40} at home (n = 4),^{32,38,42,47} and one online (n = 1).⁴⁴ Programs were delivered by nurses, educators, a psychologist, a psychotherapist, a social worker, an occupational therapist, and counsellors (n = 12),^{13,14,26,28,30–32,35,36,38–40} authors/researchers (n = 6),^{8,29,34,42,44,46} other paid professions (n = 4),^{13,27,37,47} volunteers (n = 4),^{6,43,44,47} an Aboriginal elder (n = 1)⁴⁵ and a museum educator (n = 2).^{41,48} Of the 27 included studies, only seven were evaluating established community-based programs^{14,30,37,41,46–48} with the remainder implementing the programs for the research.

Critical Appraisal

Quantitative Research

Based on the use of the McMaster critical appraisal tool, the study purpose was clearly articulated in all 17 studies, with clear information regarding sample size and justification. Most measures adopted in studies were reliable and valid, and reminiscence programs were described in detail. All studies identified clear information on data collection methods and analysis. Clinical implications and importance of findings were also included in all studies. Details are in [Table 4](#).

Qualitative Research

A review of the qualitative studies using the CASP checklist found that all studies clearly articulated an aim and purpose, but only six stated a known qualitative methodology. Recruitment, data collection and researcher relationship were described appropriately in eight studies. Data analysis was adequately described in six studies. Two studies were scant in their methodological reporting with findings not fully discussed.^{43,47} Details are in [Table 5](#).

Participant Characteristics

The ages of participants ranged from 42 to 105 years. While this Systematic Review was focused on studies involving older people aged 50 years and over, the inclusion of one study with a single participant aged 42 years⁴⁸ was deemed appropriate as the remainder of the participants met the eligibility criteria. Across the studies that reported the number of participants and their gender, the majority were women (n = 67%; 1190 women and 585 men). One study did not specify gender or age range of participants⁴² while both Smiraglia papers^{41,48} had the same participants (n = 114). Three studies included only women^{14,38,45} and two studies included only men.^{46,47} One Australian study⁴⁵ included all Aboriginal women and two studies from the USA were all African American people.^{8,34} Seven studies reported participants to have depression,^{12,13,26,30,34,39,40} four studies reported participants to have dementia,^{29,37,46,47} three studies reported participants to have anxiety^{13,30,39} and one focused on people who were lonely.³⁹

Outcome Measurements

Outcomes of interest in the quantitative studies included mental health – depression, anxiety, dementia (n = 12),^{13,26–30,32,34,36–38,40} life satisfaction (n = 7),^{27,29,30,33,35,36,40} memory (n = 4),^{28,30,37,38} mastery (n = 3),^{26,30,32} wellness (n = 3),^{31,37,40} mood (n = 3),^{31,37,41} positive/negative thoughts/feelings (n = 2),^{30,38} social connectivity (n = 2),^{29,31} mattering (n = 1),³¹ resilience (n = 1),³³ affect (n = 1),⁴⁰ Independence in daily living (n = 1),²⁹ and loneliness (n = 1).³³

Depression

Twelve studies used depression measurements. As indicated in [Table 6](#), six studies^{27–29,32,38,40} used the Geriatric Depression Scale (GDS) while four^{26,30,34,39} used Centre of Epidemiology Studies Depression Scale (CES-D). One³² used the accepting the past scale (APS) as well as GDS, while another one³⁹ used the Emotional Symptom Checklist (ESC) as well as CES-D. The others included Zung self-rating depression scale (SDS),¹³ and Beck Depression Inventory

Table 4 McMaster Appraisal Table

Author and Year	Study Purpose	Literature	Sample Numbers	Sample Detail	Sample Size Justified	Measures Reliable & Valid	Intervention Described	Contamination Avoided	Cointervention Avoided	Statistical Significance	Analysis and Methods	Clinical Importance	Dropouts	Clinical Implications
Bohlmeijer 2009 ²⁶	Yes	Yes	108	Yes	Yes	Yes	Yes	n/a	n/a	Yes	Yes	Yes	Yes	Yes
Hanaoka 2011 ²⁸	Yes	Yes	22	Yes	Yes	Yes	Yes	n/a	n/a	Yes	Yes	Yes	Yes	Yes
Hanaoka 2018 ²⁷	Yes	Yes	72	Yes	Yes	Yes	Yes	n/a	n/a	Yes	Yes	Yes	Yes	Yes
Jo 2015 ²⁹	Yes	Yes	19	Yes	Yes	Yes	Yes	n/a	n/a	Yes	Yes	Yes	Yes	Yes
Korte 2012 ³⁰	Yes	Yes	202	Yes	Yes	Yes	Yes	No	No	Yes	Yes	Yes	Yes	Yes
Lukow 2013 ³¹	Yes	Yes	19	Yes	Yes	Yes	Yes	No	Yes	Yes	Yes	Yes	Yes	Yes
Pearson 2006 ¹²	Yes	Yes	36	Yes	Yes	Yes	Yes	Yes	Yes	Yes	Yes	Yes	Yes	Yes
Rawtaer 2015 ¹³	Yes	Yes	101	Yes	Yes	Yes	Yes	n/a	n/a	Yes	Yes	Yes	Yes	Yes
Ren 2021 ³³	Yes	Yes	121	Yes	Yes	Yes	Yes	Yes	Yes	Yes	Yes	Yes	Yes	Yes
Shellman 2009 ³⁴	Yes	Yes	56	Yes	Yes	Yes	Yes	Yes	Yes	Yes	Yes	Yes	Yes	Yes
Sherman 1987 ³⁵	Yes	Yes	104	Yes	Yes	Yes	Yes	Yes	Yes	Yes	Yes	Yes	Yes	Yes
Smiraglia 2015 ⁴¹	Yes	Yes	114	Yes	Yes	Yes	Yes	n/a	n/a	Yes	Yes	Yes	Yes	Yes
Stevens-Ratchford 1993 ³⁶	Yes	Yes	24	Yes	Yes	Yes	Yes	n/a	n/a	Yes	Yes	Yes	Yes	Yes
Woods 2012 ³⁷	Yes	Yes	488	Yes	Yes	Yes	Yes	Yes	Yes	Yes	Yes	Yes	Yes	Yes
Wu 2017 ³⁸	Yes	Yes	27	Yes	Yes	Yes	Yes	n/a	n/a	Yes	Yes	Yes	Yes	Yes
Zauszniewski 2004 ³⁹	Yes	Yes	43	Yes	Yes	Yes	Yes	n/a	n/a	Yes	Yes	Yes	Yes	Yes
Zhou, 2011 ⁴⁰	Yes	Yes	59	Yes	Yes	Yes	Yes	Yes	Yes	Yes	Yes	Yes	Yes	Yes

Table 5 Qualitative Critical Appraisal Findings with CASP

Author and year	Aim	Purpose is Qualitative	Research Design	Recruitment	Data Collection	Researcher Relationship	Ethics	Data Analysis	Findings
Allen. 2016 ⁴²	Yes	Yes	Yes	Yes	Yes	Yes	Yes	Yes	Yes
Anderson & Weber. 2015 ⁴³	Yes	Cannot tell	Cannot tell	Yes	Yes	No	Cannot tell	No	No
Chonody. 2013 ⁶	Yes	Yes	Cannot tell	Yes	Yes	Yes	Yes	Yes	Yes
Kanayama. 2003 ⁴⁴	Yes	Yes	Yes	Yes	Yes	Yes	Yes	Cannot tell	Yes
Osmond. 2018 ⁴⁵	Yes	Yes	Cannot tell	Yes	Yes	Yes	Yes	Cannot tell	Yes
Sass. 2021 ⁴⁶	Yes	Yes	Yes	Yes	Yes	Yes	Yes	Yes	Yes
Shellman. 2011 ⁸	Yes	Yes	Yes	Yes	Yes	Yes	Yes	Yes	Yes
Smiraglia. ^a 2015 ⁴⁸	Yes	Yes	Cannot tell	Yes	Yes	Yes	Yes	Yes	Yes
Somody. 2010 ¹⁴	Yes	Yes	Yes	Yes	Yes	Yes	Yes	Yes	Yes
Tolson-Schofield. 2011 ⁴⁷	Yes	Yes	Yes	Cannot tell	Yes	Cannot tell	Yes	Cannot tell	No

Note: ^aAuthor contacted and confirmed that ethical approval was obtained and participants gave informed consent.

(BDI).³⁶ Of the 12 studies that used a depression measure, reminiscence featured in all, with life review,³⁰ mattering³¹ and psychosocial intervention¹³ also used.

Mattering

Mattering is the general belief that you are important to others. One study³¹ used the Mattering Index to measure mood, via self-consciousness, self-esteem, self-monitoring, alienation, and perceived social support.

Anxiety/Loneliness

Of the five studies that used anxiety or loneliness measurements, two used Zung self-rating anxiety scale (SAS),^{13,38} with one each for hospital anxiety depression scale (HADS)³⁰ and ESC.³⁹ All anxiety measures from the four studies also included a measure for depression. UCLA Loneliness Scale – 8 (ULS)³³ was the single measurement for loneliness.

Quality of Life

There were eleven studies^{28–31,33,35–38,40,41} that measured quality of life using 11 different tools. Two studies^{37,40} used tools that also included life satisfaction, self-esteem, and well-being.

Mastery

There were five^{26,29,30,32,33} studies that measured mastery. Three^{26,30,32} used the Pearlin Mastery Scale (PMS) (beliefs about control over environment), while one²⁹ used the Ego Integrity Scale (EIS) and one³³ used Brief Resilience Scale (BRS).

Table 6 Overview of Quantitative Findings

	Depression						Anxiety				Loneliness	Quality of Life					Mastery		
	CES-D	SDS	GDS	BDI	ESC	Misc	SAS	HADS-A	RAID	ESC	ULS	SES	ABS	SIWB	QoL-AD	Misc	PMS	BRS	EIS
Bohlmeijer 2009 ²⁶	↓*																↑*		
Hanaoka 2018 ²⁷			↓*																
Hanaoka 2011 ²⁸			↓*													NC ^a			
Jo 2015 ²⁹						↓ ^b										↑* ^c			↑*
Korte 2012 ³⁰	↓*							↓*									↑*		
Lukow 2013 ³¹																↑* ^d			
Pearson 2006 ³²			↓*			↓* ^e											↑		
Rawtaer 2015 ¹³		↓*					↓*												
Ren 2021 ³³										↓*			↑*					↑*	
Shellman 2009 ³⁴	↓*																		
Sherman 1987 ³⁵																↑* ^f			
Smiraglia 2015 ⁴¹																↑* ^g			
Stevens-Ratchford 1993 ³⁶				↓*								↑*							
Woods 2012 ³⁷														NC	↑ ^h				
Wu 2018 ³⁸			↓*				↓*									↑* ⁱ			
Zauszniewski 2004 ³⁹	↓*				↓* ^j					↓									
Zhou 2011 ⁴⁰			↓*									NC	↑*						

Note: ^aLSI-K, life satisfaction index (K); ^bSGDS, Short-form Geriatric Depression Scale; ^cLSI-A, Life satisfaction index (A); ^dMLQ, Meaning in life questionnaire; ^eAPS, accepting the past scale; ^f5F-WEL, Five Factor Wellness Inventory; ^gLSI-Z, Life satisfaction index (Z); ^hEQ-5D, European quality of life 5 dimensions; ⁱGHQ, general health questionnaire; ^jReduction in depression significant after 6 weeks but not after 12 weeks. *Significant.

Abbreviations: ↓, decrease; ↑, increase; ABS, affect balance scale; BDI, Beck Depression Inventory; BRS, Brief Resilience Scale; CES-D, Centre of Epidemiology Studies Depression Scale; EIS – Ego Integrity Scale; ESC- Emotional Symptom Checklist; GDS, geriatric depression scale; HADS-A, hospital anxiety depression scale; MLQ, Meaning in life questionnaire; NC, no change; PMS, Pearlin Mastery Scale (beliefs about control over environment); QoL-AD, Quality of life Alzheimer's Disease; RAID, rating anxiety in dementia; SAS, Zung self-rating anxiety scale; SDS, Zung self-rating depression scale; SES, Rosenberg self-esteem scale; SIWB= Spirituality Index of Well-Being; ULS – UCLA Loneliness Scale – 8.

Quantitative Findings

Collectively, quantitative research, which investigated the effectiveness of reminiscence programs, generally reported positive findings irrespective of the program parameters and outcomes measured.

Depression

There was consistent evidence from the literature on the positive impact of reminiscence on depression among participants. All but one study reported statistically significant reduction in depression. The study by Jo,²⁹ which was a pre-post study design with a small sample size of 19 people with dementia measured changes in depression using Short-form Geriatric Depression Scale (SGDS). Whilst there were decreases in depression found, this was not significant. Similarly, Pearson³² used two depression measures (GDS and APS) to compare the effect of cognitive behaviour therapy, reminiscence therapy and education (control group). Pearson³² found that while there were significant within-group differences in depression scores (GDS), there were no between group differences. However, for the APS measure, there were significant differences between the pre and post test scores for both the reminiscence and cognitive behaviour therapy groups, but not the control group. Zauszniewski,³⁹ which also used two depression measures (CES-D, ESC) reported a reduction in depression at six weeks after the intervention, although this effect was not sustained at 12 weeks. Therefore, collectively the evidence base indicates that reminiscence programs may have a positive impact on depression.

Mattering

Findings reported by Lukow³¹ in relation to mattering were mixed and not statistically significant, with a slight decrease in mattering occurring for the intervention group from pre to post test and a slight increase in mattering for the control group.

Anxiety/Loneliness

There was consistent evidence from the literature on the positive impact of reminiscence on anxiety among participants. All studies reported a reduction in anxiety, with a significant effect noted for anxiety measures SAS and HADS.^{13,30,38} Results for one study³⁹ were not statistically significant revealing an increase in anxiety immediately after commencing participation in the program, which decreased over time at six weeks and 12 weeks. The one study which measured the effect of reminiscence programs on loneliness³³ found positive outcomes but more research is needed.

Quality of Life

All but three studies^{28,30,37} reported significant increases in quality of life, giving consistent evidence for the positive impact of reminiscence on quality of life. Woods,³⁷ which also included carers in their research, used two quality of life measurements (Quality of life Alzheimer's Disease (QoL-AD) and European quality of life 5 dimensions (EQ-5D)) with conflicting findings. While there was no change in the QoL-AD measure, there was an increase in EQ-5D, which was not statistically significant. Similar conflicting findings were reported by Zhou⁴⁰ whereby significant positive increases in quality of life were reported using the affect balance scale (ABS), but no change was recorded using the Rosenberg self-esteem scale (SES).

Mastery

There were significant findings in four of the studies,^{26,29,30,32,33} with the exception of Pearson³² which showed an increase which was not significant.³² There were reported increases in sense of control over their own lives (PMS), recovery from stressful situations (BRS) as well as significant increases on feelings of autonomy, competency and connection to others (EIS).

Qualitative Findings

Thematic analysis identified three main themes: program processes, program ingredients and program benefits. Program processes were the tools used and skills required for delivery of reminiscence programs. Program ingredients were the activities and approaches adopted by reminiscence program facilitators with a key program ingredient being the need to “draw from the past”. Two program benefits were identified, including “relationship with others” and “improved sense of self”. Quotes drawn from qualitative studies have been provided to illustrate themes (Table 7).

Table 7 Overview of Qualitative Findings

Qualitative Findings	Quote	Papers Included in Finding
Theme 1 Program processes	<p>"I think you guys said that we should see them once a week, but I think that's too close. So I was giving the clients two weeks apart" (Allen et al, 2016, p. 363).⁴²</p> <p>"the point of being here is that we are allowed to share our stories" (Chonody & Wang, 2013, p. 87).⁶</p> <p>"find everybody's level, as an individual, and you have just got to try and work things in to suit each person. I can understand whereabouts to come in, where to sit back, where to interject on a subject and change a subject" (Tolson & Schofield, 2012, p. 66).⁴⁷</p> <p>"You will notice if it's not engaging them they will go silent or just smile ... but if they're smiling they're fairly happy ... you just try and provide as many varied things as possible and hope that you spark something" (Sass et al, 2021, p. 2179).⁴⁶</p>	[6,14,42,46,47] n = 5
Theme 2 Program ingredients	<p>"the reminiscence was so powerful to these women ...[the music] brought it out for them ... I think several of them were incredibly surprised that the music was as powerful as it was at helping them remember their life stories or talking about and sharing" (Somody, 2010, p. 219).¹⁴</p> <p>"For some people ... who might have problems communicating and cannot just jump in [with comments] ... they love having a go at darts and they do archery ... some of them would rather forego the bit of chat at the start and just crack straight on with the activities" (Sass et al, 2021, p. 2177).⁴⁶</p> <p>"thinking about the past to prepare for death makes me depressed" (Shellman et al, 2011, p. 352).⁸</p>	[6,8,14,43,44,46–48] n = 8
Theme 2 Program ingredients: Subtheme 1 Drawing on the past	<p>"We are not only able to go back and talk about old memories and things that happened years ago but also we can compare those times with these times". (Chonody & Wang, 2013, p. 88)⁶</p> <p>"[we] came from ...oppression, racism, poverty, you name it, but we went on ... make us feel proud, and when I think of our old people, the sacrifice that they've made for us ... that's the memories I have". (Osmond & Phillips, 2018, p. 572).⁴⁵</p> <p>"When I decided to meet with you I felt there could not be much to talk about. I was wrong. I really enjoyed the meeting with you—especially recalling so much about the cars". (Anderson & Weber 2015, p. 478)⁴³</p> <p>"This was so different ... when I first came in here I said he is going to start talking and asking me a bunch of stupid questions. I was wrong. Now, I have a whole new knowledge about myself with reminiscing". (Shellman et al, 2011, p. 352)⁸</p>	[6,8,14,43–48] n=9
Theme 3 Program Benefit: Subtheme 1 Relationships with others	<p>"Many of the people here are just like family to me. This is one group that I truly enjoy. And all the [volunteers]. They are just marvelous people. I like how they treat us as people, not just old folks". (Chonody and Wang, 2013, p. 88)⁶</p> <p>"I do not have time to go out and socialize because I nurse my wife, who is not able to speak and eat by herself. I am very lonely with no one to talk to. I enjoy having responses from folks". (Kanayama, 2016, p. 280).⁴⁴</p> <p>"Participants frequently checked to ensure that neighbors had seen an object being passed around; residents also showed each other how something worked or explained what the parts of an object were. They gave advice about using the object and demonstrated actions for their peers" (Smiraglia, 2015, p. 242)⁴⁸</p>	[6,8,14,42,44–48] n=9
Theme 3 Program Benefit: Subtheme 2 Improved sense of self	<p>"It [the class] allowed me to express myself verbally and also in written papers. I like this because it gives me information on how to express myself" (Chonody & Wang, 2013, p. 87).⁶</p> <p>"If we didn't think anything of ourselves before, we do now. We're walking out of here with a brand new knowledge of ourselves. We are very special people, this age group ... if people only realise what we know" (Shellman et al, 2011, p. 352).⁸</p> <p>"she could share about her own personal growth, which to me is the most brave thing ... I felt like she left much more empowered, much more positive, than she came". (Somody, 2010, p. 222).¹⁴</p>	[6,8,14,42,44,46,47] n = 7

Theme 1: Program Processes

The use of a program manual was useful,⁴² but facilitators reported this also restricted their ability to use their intuition. Facilitators needed to have skills in patience⁴⁶ and providing encouragement⁴⁷ without pushing too hard to force participation.⁴⁶ For group programs, facilitators aimed to create an environment where people felt safe to participate.^{6,14} They needed to be well prepared¹⁴ and able to adapt quickly depending on the group mood and participant capabilities.⁴⁷ Given participants may not always be able to express their feelings, observational skills and varied approaches to engagement were required.⁴⁶ Generally, program facilitators reported finding their involvement rewarding¹⁴ and cost-effective.⁴² Community settings (such as a hotel) were preferred for inclusion as participants found this more relaxed when compared with a clinical environment.⁴⁷

Theme 2: Program Ingredients

At the start of each new reminiscence program, ice-breaking techniques and inclusive activities were important.⁴⁴ Defining group purpose and goals up front promoted trust and security,¹⁴ while having some chronology to program

content helped to order memories.⁴³ Initially, agreeing to participate in programs was dependent on people being willing to “give it a chance” and sometimes relied on someone bringing them along and giving encouragement to help them feel safe.⁶ Consistency of attendance and making sure everyone could hear were necessary to avoid feeling disconnected from the group.¹⁴ Having a topic or occupation to focus the program each week supported engagement, as well as playfulness, humor,^{46–48} and gentle physical activity.⁴⁶ Even though the sessions had a focus, occasionally participants would talk about other things and facilitators would follow their lead.⁴⁷ Where participants were of similar age and background, they were able to find things in common leading to natural disclosure, and further interactions.^{8,44–46} Sometimes there was discomfort about the topics being discussed, such as regret and forgiveness, and grief,¹⁴ and concerns about sharing stories from their past because they evoked sadness¹⁴ or meant reliving past trauma.⁸ Some did not like the idea of using reminiscence to prepare for death and found this depressing.⁸

Subtheme 2.1 Drawing on the Past

Drawing on the past is a key program ingredient. Program designs that involved participants drawing on and disclosing past experiences were common.^{6,8,43–45,47,48} The group process helped participants to relate the memories of others to their own and to extend their recall of memories.¹⁴ Participants connected based on past experiences,^{6,8,44} and nostalgia.^{6,45} For example, there was pride expressed about past achievements during times of oppression and trauma.⁴⁵ Participants in Somody¹⁴ all found a connection to the music that was shared in the sessions and also found the process supported them to reconnect with memories they had forgotten. The group structure in Sass⁴⁶ enabled reminiscence about past involvement in sport and evoked some vivid memories that drew them into a social world where others shared similar experiences. Rekindled memories elicited expressions of enjoyment and lifted mood.⁴⁶

Theme 3: Program Benefits

Two key benefits were identified across the qualitative studies reviewed, these being “Relationships with others” and “improvements in sense of self”. These two key benefits appear to be a result of the program processes and ingredients through drawing on the past.

Subtheme 3.1 Relationships with Others

The structure of reminiscence programs enabled rapport building between different participants and with facilitators. There was a tendency for participants to take seats in the same position each week, suggesting growing sense of group belonging.⁴⁷ As noted previously, playfulness was a key ingredient in the programs^{46–48} with humor (sometimes self-deprecating) and laughter featuring,⁴⁸ leading to camaraderie, friendly banter and proud showing off.^{46–48} Being with others assisted participants to cope with life challenges and process some difficult emotions.^{14,44} Program participants came to care about the other group members and they valued the mutual support they provided each other.^{6,8,14,48} The opportunity to reunite with women from their past in Osmond and Phillips⁴⁵ reinforced emotional bonds and expressions of grief from those from their group who were no longer alive.

The building of friendships/new relationships and connecting with people^{8,45} provided opportunity for self-expression and meant participants kept attending the sessions.⁶ The new relationships meant they had friends who were often in similar situations who they could turn to in times of need.⁴⁴ Involvement in the program also prompted facilitators to think about their relationships and to rekindle their family relationships.⁴² Generally, the communication between participants and their families and friends was enhanced by the programs, including sharing past experiences on blogs and using the internet.^{6,44} On the other hand, in one study the relationships between the invited family or friends of participants were reported as unchanged.¹⁴

These new connections were a powerful means of relational growth and reported as a valued outcome for participants.^{14,44} The construction of relationships occurred through sharing personal essays through email,⁴⁴ public sharing of blogs on social media.⁶ Participants enjoyed getting feedback and comments from their contributions and this helped them to reveal more of themselves and be reflective.^{6,44} They also began to feel connected to the broader society, which was highly valued for those who may have felt isolated due to their personal circumstances (for example being a carer).⁴⁴

Subtheme 3.2 Improved Sense of Self

For some, participating in a reminiscence program was something they had always wanted to do, and they felt a sense of accomplishment.⁴² Participants also reported feeling good about themselves as reminiscence programs provided a place to feel heard⁶ and to try new things.^{6,44} One program had participants doing gentle physical activity sometimes using equipment (eg, darts) which promoted friendly competition and self-esteem, which was particularly important for some who struggled with self-worth and communicating.⁴⁶ For people with dementia, attendance at the program and the group environment led to them being stimulated and they were described as being both alert and calm.⁴⁷ Reminiscence sessions were sometimes transformative, leading participants to get to know and see themselves through a new lens,⁸ be more reflective and self-aware¹⁴ and to “feel better” after sharing.⁴⁴

Prior to the music program, the five women had lost sight of thinking about their future and afterwards some of them could see new possibilities and hope for the future, including traveling and meeting new people (including possible romance).¹⁴ In other reminiscence programs, those who had health issues were able to evoke positivity in their outlook from their participation.⁴² Discussions online sometimes implied future plans⁴⁴ and in some circumstances there was effort required to shift negative thought processes to a more positive frame.⁴⁴

Discussion

The aim of this systematic review was to explore participants experiences of, and outcomes from, community-based reminiscence programs. Twenty-seven studies from quantitative and qualitative research paradigms contribute to the evidence base for this review. Collectively, there appears to be consistent evidence to indicate that community-based reminiscence programs may have positive effects on health and social outcomes. While these were positive findings, the literature also highlighted considerable heterogeneity in the parameters underpinning reminiscence programs, suggesting the need for greater development of the theory base and guides for delivery.²¹ In addition, there were some concerns about methodological quality of the evidence base.

Positioning the programs in the community, such as local hotels, museums or community centers seemed favorable over more medicalized settings. Creating programs in community settings may improve their accessibility for older people living at home who may not have many social connections and feel lonely.⁴⁹ The prevalence of loneliness is increasing for older people^{2,50–52} and has been linked to depressive symptoms.^{53–55} The opportunity to meet new people as well as collectively reflect and chat about past times appears to be a useful approach to overcome being alone.^{56,57} While only one quantitative study³³ in this review focused on measuring the impact of a reminiscence program on loneliness, the qualitative studies found that new relationships and friendships were built from reminiscence programs. Decrease in depression and anxiety identified in this review could, in part, be due to overcoming feelings of loneliness.^{58,59} These findings are consistent with results identified in similar community-based programs targeting older people, (such as Men’s Sheds⁶⁰) and other systematic reviews of the literature exploring programs in residential aged care facilities.^{61,62}

Qualitative studies indicated that reminiscence programs can assist with improving sense of self. This finding aligns with some of the original tenets behind the delivery of reminiscence programs⁶³ and may relate to the improvements in quality of life found in this review. There are possible links between quality of life and having opportunities to reflect on the past and build relationships with others.⁶⁴ Cammisuli et al found that reminiscence therapy not only slowed cognitive deterioration but also reduced depressive symptoms and improved quality of life.⁶⁴ Reminiscence programs provide opportunities for older people to affirm (or reaffirm) cognitive abilities (particularly memory recall) which in turn may enhance self-esteem and spark a positive sense of self. Recounting past events and stories can also provide a sense of mastery over personal perceptions of declining cognition. The opportunity to touch, feel or see old objects/pictures or listen to sounds/voices/music during reminiscence sessions can rekindle emotions such as pride and self-esteem.

The sharing of personal stories with others during reminiscence sessions can also provide an opportunity to feel noticed, cared for and that they matter. While only one quantitative study³¹ measured Mattering (with findings indicating change had not occurred over time), it could be argued that the collective findings from this systematic review indicate reminiscence programs can contribute to sense of mattering. As Flett⁶⁵ indicates,

matterings is essentially the feeling of being valued and having personal significance to others. The person who has a sense of mattering to others is someone who feels valued and cared for.

Building new friendships, rekindling old ones, and receiving feedback from others through reminiscence sessions can create opportunities for participants to feel connected and valued (mattering). Being a member of a friendship group can also assist with reconciling negative life issues, and forming interpersonal resiliency.⁶⁵

This systematic review provides evidence that reminiscence programs could be used for social prescription purposes⁶⁶ to assist with alleviating mental health issues such as depression and anxiety as well as to overcome social isolation and loneliness. Social prescribing has emerged in the US, UK and Canada in recent years as a referral pathway that gives non-biomedical and non-pharmaceutical options for social issues (such as loneliness and social isolation) as well as mental health issues (such as depression and anxiety).⁶⁷

Reminiscence programs in populations prone to negative thinking may have negative outcomes such as sadness, particularly if the reminiscence sessions are prolonged and segue into a longing for the past.^{5,68} Skilled facilitators appeared to be pivotal in building rapport, responding to participant cues and noticing when thinking is becoming unhelpful. This review found that skilled facilitators can promote a positive participant experience which was a finding consistent with a systematic review of programs in residential aged care.⁶¹ The value of trained facilitators has been reported in published models for reminiscence with predictability and safety foregrounded as pivotal to program enjoyment.^{47,69} Interestingly, the role of reminiscence program facilitators as a key ingredient in program delivery and success has minimal attention in evidence-based guidelines for reminiscence therapy.⁷⁰ Having said that there is a recommendation that facilitators be trained for the purposes of recognizing adverse outcomes of reminiscence such as recalling distressing memories or becoming uncomfortable.⁷¹

While findings from this systematic review indicate generally positive results, there is a paucity of studies focused on community reminiscence programs compared to those conducted in aged care and nursing homes.^{61,62,72} There is also a need for more research exploring the relationship between participating in reminiscence programs and loneliness and a sense of mattering for people living in the community. Given the convergent findings in this systematic review, the required skills of facilitators are also worthy of more scholarly attention. Developing a deeper understanding of how best to deliver reminiscence programs will improve program outcomes.⁷³

Strengths and Limitations

A strength of this systematic review is the inclusion of both quantitative and qualitative research designs thus providing in-depth understanding of the impact and experiences of people involved in reminiscence programs. In addition, the study was informed by best practice standards in the conduct and reporting of a systematic review using PRISMA guidelines. However, some caution should be applied as there are inherent limitations of any systematic review. While the quantitative findings demonstrated statistically significant changes in depression, anxiety, loneliness, quality of life and mastery, less than half of the studies (eight out of 17) were randomized controlled, thus compromising claims of causality. It should also be noted while the reminiscence programs included in this review were provided in a community setting, the majority of studies (n = 22) curated these programs exclusively for the purpose of the research. Only five reminiscence programs had already been established prior to research being conducted with participants. As such, the research parameters established for the majority of the studies may not be able to be replicated in practice by community facilitators. Another limitation relates to the length of all studies reviewed, with only one study indicating any findings based on longitudinal, ongoing data collection approaches.³⁹ As such, the effects of reminiscence programs over time remain relatively unknown.

Conclusion

The impact and experience of reminiscence programs for older people appears to be mostly positive for health and social outcomes. The process of sharing stories provided opportunities for participants to improve their sense of self, to feel noticed, and that they matter. This likely contributed to decreasing depression and loneliness as well as building relationships. The success of reminiscence programs is likely reliant on skilled facilitators who can get the group for

success through setting up group dynamics, use of ice breakers and balancing structure with spontaneity. While catering to local contexts is important, as reminiscence programs gain popularity, its implementation in practice should also be underpinned by clear and reproducible practices. Further research that has standardized reminiscence programs in the community with long term follow-up would strengthen the evidence base. This research would be used to guide further program development.

Disclosure

Dr Carolyn Murray reports non-financial support as an associate editor for Australian Occupational Therapy Journal, grants from arts and health collaborative alliance and office for ageing well (SA Government), outside the submitted work. The authors report no other conflicts of interest in this work.

References

1. Australian Bureau of Statistics. *Census of Population and Housing: Reflecting Australia – Stories from the Census*. Canberra: Australian Bureau of Statistics; 2016.
2. Ogrin R, Cyarto EV, Harrington KD, et al. Loneliness in older age: what is it, why is it happening and what should we do about it in Australia? *Austr J Ageing*. 2021;40(2):202–207. doi:10.1111/ajag.12929
3. Bruggencate TT, Luijckx KG, Sturm J. Social needs of older people: a systematic literature review. *Ageing Soc*. 2018;38(9):1745–1770. doi:10.1017/S0144686X17000150
4. Coll-Planas L, Watchman K, Doménech S, et al. Developing evidence for football (Soccer) reminiscence interventions within long-term care: a co-operative approach applied in Scotland and Spain. *J Am Med Direct Assoc*. 2017;18(4):355–360. doi:10.1016/j.jamda.2017.01.013
5. Henkel L, Kris A, Birney S, et al. The functions and value of reminiscence for older adults in long-term residential care facilities. *Memory*. 2017;25(3):425–435. doi:10.1080/09658211.2016.1182554
6. Chonody J, Wang D. Connecting older adults to the community through multimedia: an intergenerational reminiscence program. *Activit Adapt Aging*. 2013;37(1):79–93. doi:10.1080/01924788.2012.760140
7. Butler RN. The life review: an interpretation of reminiscence in the aged. *Psychiatry*. 1963;26(1):65–76. doi:10.1080/00332747.1963.11023339
8. Shellman J, Ennis E, Bailey-Addison K. A contextual examination of reminiscence functions in older African-Americans. *J Aging Stud*. 2011;25(4):348–354. doi:10.1016/j.jaging.2011.01.001
9. Evers C. Early psychosocial interventions in dementia: evidence-based practice. *Ageing Soc*. 2010;30(4):724–726. doi:10.1017/S0144686X10000024
10. Holroyd-Leduc J. *Preserving the Memories: Managing Dementia, in Evidence-Based Geriatric Medicine*. Oxford, UK: Wiley-Blackwell; 2012:73–93.
11. Jordan F, O’Shea E, Murphy K. ‘Seeing me through my memories’: a grounded theory study on using reminiscence with people with dementia living in long-term care. *J Clin Nurs*. 2014;23(23–24):3564–3574. doi:10.1111/jocn.12645
12. Yen H, Lin L. A systematic review of reminiscence therapy for older adults in Taiwan. *J Nurs Res*. 2018;26(2):138–150. doi:10.1097/jnr.0000000000000233
13. Rawtaer I, Mahendran R, Yu J, et al. Psychosocial interventions with art, music, Tai Chi and mindfulness for subsyndromal depression and anxiety in older adults: a naturalistic study in Singapore: psychosocial interventions in late life. *Asia-Pac Psychiatry*. 2015;7(3):240–250. doi:10.1111/appy.12201
14. Somody CF. *Meaning and Connections in Older Populations: A Phenomenological Study of Reminiscence Using “A Musical Chronology and the Emerging Life Song”*. ProQuest Dissertations Publishing; 2010.
15. Clark M, Murphy C, Jameson-Allen T, et al. Sporting memories & the social inclusion of older people experiencing mental health problems. *Ment Health Soc Inclu*. 2015;19(4):202–211. doi:10.1108/MHSI-06-2015-0024
16. Connellan K. Senses of memory in dementia care: the transcendent subject. *Art Ther Online*. 2018;9(1):1–26.
17. Yan Z, Dong M, Lin L, et al. Effectiveness of reminiscence therapy interventions for older people: evidence mapping and qualitative evaluation. *J Psychiatr Ment Health Nurs*. 2023;30(3):375–388. doi:10.1111/jpm.12883
18. Cuevas PEG, Davidson PM, Mejilla JL, et al. Reminiscence therapy for older adults with Alzheimer’s disease: a literature review. *Int J Ment Health Nurs*. 2020;29(3):364–371. doi:10.1111/inm.12692
19. Office for National Statistics. Profile of the older population living in England and Wales in 2021 and changes since; 2011. [12th August 2023]. Available from: <https://www.ons.gov.uk/peoplepopulationandcommunity/birthsdeathsandmarriages/ageing/articles/profileoftheolderpopulationlivinginenglandandwalesin2021andchangessince2011/2023-04-03>. Accessed December 5, 2023.
20. U. S. Department of Health & Human Services. 2020 profile of older Americans; 2021. [12th August 2023]. Available from: https://acl.gov/sites/default/files/aging%20and%20Disability%20In%20America/2020Profileolderamericans.final_.pdf. Accessed December 5, 2023.
21. Webster JD, Bohlmeijer ET, Westerhof GJ. Mapping the future of reminiscence: a conceptual guide for research and practice. *Res Aging*. 2010;32(4):527–564. doi:10.1177/0164027510364122
22. Moher D, Liberati A, Tetzlaff J, Altman DG The PRISMA Group, reprint—preferred reporting items for systematic reviews and meta-analyses: the PRISMA statement. *Phys Ther*. 2009;89(9):873–880.
23. Law M. Critical review form - quantitative studies. 1998.
24. Stern C, Lizarondo L, Carrier J, et al. Methodological guidance for the conduct of mixed methods systematic reviews. *JBI Evid Implement*. 2021;19(2):120–129. doi:10.1097/XEB.0000000000000282
25. Braun V, Clarke V. Using thematic analysis in psychology. *Qual Res Psychol*. 2006;3(2):77–101. doi:10.1191/1478088706qp063oa

26. Bohlmeijer E, Kramer J, Smit F, et al. The effects of integrative reminiscence on depressive symptomatology and mastery of older adults. *Commun Ment Health J*. 2009;45(6):476–484. doi:10.1007/s10597-009-9246-z
27. Hanaoka H, Muraki T, Ede J, et al. Effects of olfactory stimulation on reminiscence practice in community-dwelling elderly individuals. *Psychogeriatrics*. 2018;18(4):283–291. doi:10.1111/psyg.12322
28. Hanaoka H, Muraki T, Yamane S, et al. Testing the feasibility of using odors in reminiscence therapy in Japan. *Phys Occup Ther Geriatrics*. 2011;29(4):287–299. doi:10.3109/02703181.2011.628064
29. Jo H, Song E. The effect of reminiscence therapy on depression, quality of life, ego-integrity, social behavior function, and activities of daily living in elderly patients with mild dementia. *Educ Gerontol*. 2015;41(1):1–13. doi:10.1080/03601277.2014.899830
30. Korte J, Cappeliez P, Bohlmeijer ET, et al. Meaning in life and mastery mediate the relationship of negative reminiscence with psychological distress among older adults with mild to moderate depressive symptoms. *Eur J Ageing*. 2012;9(4):343–351. doi:10.1007/s10433-012-0239-3
31. Lukow HR. *Structuring Reminiscence Group Interventions for Older Adults Using a Framework of Mattering to Promote Wellness*. ProQuest Dissertations Publishing; 2013.
32. Pearson L. *The Effect of Integrative Reminiscence on Depression, Ego Integrity and Personal Mastery in the Elderly*. ProQuest Dissertations Publishing; 2006.
33. Ren Y, Tang R, Sun H, et al. Intervention effect of group reminiscence therapy in combination with physical exercise in improving spiritual well-being of the elderly. *Iran J Public Health*. 2021;50(3):531–539. doi:10.18502/ijph.v50i3.5594
34. Shellman JM, Mokel M, Hewitt N. The effects of integrative reminiscence on depressive symptoms in older African Americans. *West J Nurs Res*. 2009;31(6):772–786. doi:10.1177/0193945909335863
35. Sherman E. Reminiscence groups for community elderly. *Gerontologist*. 1987;27(5):569–572. doi:10.1093/geront/27.5.569
36. Stevens-Ratchford RG. The effect of life review reminiscence activities on depression and self-esteem in older adults. *Am J Occup Ther*. 1993;47(5):413–420. doi:10.5014/ajot.47.5.413
37. Woods RT, Bruce E, Edwards RT, et al. REMCARE: reminiscence groups for people with dementia and their family caregivers - effectiveness and cost-effectiveness pragmatic multicentre randomised trial. *Health Technol Assess*. 2012;16(48):v–xv. doi:10.3310/hta16480
38. Wu D, Chen T, Yang H, et al. Verbal responses, depressive symptoms, reminiscence functions and cognitive emotion regulation in older women receiving individual reminiscence therapy. *J Clin Nurs*. 2018;27(13–14):2609–2619. doi:10.1111/jocn.14156
39. Zauszniewski JA, Eggenschwiler K, Preechawong S, et al. Focused reflection reminiscence group for elders: implementation and evaluation. *J Appl Gerontol*. 2004;23(4):429–442. doi:10.1177/0733464804270852
40. Zhou W, He G, Gao J, et al. The effects of group reminiscence therapy on depression, self-esteem, and affect balance of Chinese community-dwelling elderly. *Arch Gerontol Geriatr*. 2011;54(3):e440–e447. doi:10.1016/j.archger.2011.12.003
41. Smiraglia C. Museum programming and mood: participant responses to an object-based reminiscence outreach program in retirement communities. *Arts Health*. 2015;7(3):187–201. doi:10.1080/17533015.2015.1010443
42. Allen R, Azuero CB, Csikai EL, et al. “It was very rewarding for me” senior volunteers’ experiences with implementing a reminiscence and creative activity intervention. *Gerontologist*. 2016;56(2):357–367. doi:10.1093/geront/gnu167
43. Anderson K, Weber K. Auto therapy: using automobiles as vehicles for reminiscence with older adults. *J Gerontol Soc Work*. 2015;58(5):469–483. doi:10.1080/01634372.2015.1008169
44. Kanayama T. Adults ethnographic research on the experience of Japanese elderly people online. *New Media Soc*. 2016;5(2):267–288. doi:10.1177/1461444803005002007
45. Osmond G, Phillips M. Indigenous women’s sporting experiences: agency, resistance and nostalgia. *Austr J Polit Hist*. 2018;64(4):561–575. doi:10.1111/ajph.12516
46. Sass C, Surr C, Lozano-Sufrategui L. Expressions of masculine identity through sports-based reminiscence: an ethnographic study with community-dwelling men with dementia. *Dementia*. 2021;20(6):2170–2187. doi:10.1177/1471301220987386
47. Tolson D, Schofield I. Football reminiscence for men with dementia: lessons from a realistic evaluation. *Nurs Inq*. 2012;19(1):63–70. doi:10.1111/j.1440-1800.2011.00581.x
48. Smiraglia C. Qualities of the participant experience in an object-based museum outreach program to retirement communities. *Educ Gerontol*. 2015;41(3):238–248. doi:10.1080/03601277.2014.954493
49. Todd C, Camic PM, Lockyer B, et al. Museum-based programs for socially isolated older adults: understanding what works. *Health Place*. 2017;48:47–55. doi:10.1016/j.healthplace.2017.08.005
50. Lasgaard M, Karina F, Mark S. “Where are all the lonely people?” a population-based study of high-risk groups across the life-span. *Social Psych Psych Epidem*. 2016;51(10):1373–1384. doi:10.1007/s00127-016-1279-3
51. Luhmann M, Hawkey LC. Age differences in loneliness from late adolescence to oldest old age. *Develop Psychol*. 2016;52(6):943–959. doi:10.1037/dev0000117
52. Victor CR, Yang K. The prevalence of loneliness among adults: a case study of the United Kingdom. *J Psychol*. 2012;146(1–2):85–104. doi:10.1080/00223980.2012.629501
53. Hand C, Morin S, Leslie W, et al. Social isolation in older adults who are frequent users of primary care services. *Can Fam Phy*. 2014;60(4):324–329.
54. Hawkey C, Hawkey LC, Waite LJ, et al. Loneliness, health and mortality in old age: a national longitudinal study. *Soc Sci Med*. 2012;74(74):907–914. doi:10.1016/j.socscimed.2011.11.028
55. Stone J, Evandrou M, Falkingham J. The transition to living alone and psychological distress in later life. *Oxf J*. 2013;42:366–377.
56. de Jong Gierveld J, Fokkema T. Strategies to prevent loneliness. In: Sha’ked A, Rokach A, editors. *Addressing Loneliness: Coping, Prevention and Clinical Interventions*. Routledge/Taylor & Francis Group; 2015:218–230.
57. Rodríguez-Romero R, Herranz-Rodríguez C, Kostov B, et al. Intervention to reduce perceived loneliness in community-dwelling older people. *Scandin J Car Sci*. 2021;35(2):366–374. doi:10.1111/scs.12852
58. Cohen-Mansfield J, Eisner R. The meanings of loneliness for older persons. *Ageing Mental Health*. 2020;24(4):564–574. doi:10.1080/13607863.2019.1571019
59. Mead N, Lester H, Chew-Graham C, et al. Effects of befriending on depressive symptoms and distress: systematic review and meta-analysis. *Br J Psychiatr*. 2010;196(2):96–101. doi:10.1192/bjp.bp.109.064089

60. Foettinger L, Albrecht BM, Altgeld T, et al. The role of community-based men's sheds in health promotion for older men: a mixed-methods systematic review. *Am J Mens Health*. 2022;16(2):15579883221084490. doi:10.1177/15579883221084490
61. Franck L, Molyneux N, Parkinson L. Systematic review of interventions addressing social isolation and depression in aged care clients. *Qual Life Res*. 2016;25(6):1395–1407. doi:10.1007/s11136-015-1197-y
62. Quan NG, Lohman MC, Resciniti NV, et al. A systematic review of interventions for loneliness among older adults living in long-term care facilities. *Aging Mental Health*. 2020;24(12):1945–1955. doi:10.1080/13607863.2019.1673311
63. Lin Y-C, Dai Y-T, Hwang S-L. The effect of reminiscence on the elderly population: a systematic review. *Pub Health Nurs*. 2003;20(4):297–306. doi:10.1046/j.1525-1446.2003.20407.x
64. Cammisuli DM, Cipriani G, Giusti EM, et al. Effects of reminiscence therapy on cognition, depression and quality of life in elderly people with alzheimer's disease: a systematic review of randomized controlled trials. *J Clin Med*. 2022;11(19):5752. doi:10.3390/jcm11195752
65. Flett GL. An introduction, review, and conceptual analysis of mattering as an essential construct and an essential way of life. *J Psychoeduc Assess*. 2021;40(1):3–36. doi:10.1177/07342829211057640
66. Morse DF, Sandhu S, Mulligan K, et al. Global developments in social prescribing. *BMJ Global Health*. 2022;7(5):e008524. doi:10.1136/bmjgh-2022-008524
67. Reinhardt GY, Vidovic D, Hammerton C. Understanding loneliness: a systematic review of the impact of social prescribing initiatives on loneliness. *Perspect Public Health*. 2021;141(4):204–213. doi:10.1177/1757913920967040
68. Khan A, Bleth A, Bakpayev M, et al. Reminiscence therapy in the treatment of depression in the elderly: current perspectives. *J Ageing Longev*. 2022;2(1):34–48. doi:10.3390/jal2010004
69. Wingbermuehle C, Bryer D, Berg-Weger M, et al. Baseball reminiscence league: a model for supporting persons with dementia. *J Am Med Direct Assoc*. 2014;15(2):85–89. doi:10.1016/j.jamda.2013.11.006
70. Kim ES, Cleary SJ, Hopper T, et al. Evidence-based practice recommendations for working with individuals with dementia: group reminiscence therapy. *J Med Speech Lang Pathol*. 2006;14:xxiii.
71. Thomas JM, Sezgin D. Effectiveness of reminiscence therapy in reducing agitation and depression and improving quality of life and cognition in long-term care residents with dementia: a systematic review and meta-analysis. *Geriatric Nurs*. 2021;42(6):1497–1506. doi:10.1016/j.gerinurse.2021.10.014
72. Woods B, O'Philbin L, Farrell EM, et al. Reminiscence therapy for dementia. *Cochrane Database Syst Rev*. 2018;3(3):Cd001120. doi:10.1002/14651858.CD001120.pub3
73. Fernandez ME, ten Hoor GA, van Lieshout S, et al. Implementation mapping: using intervention mapping to develop implementation strategies. *Front Public Health*. 2019;7:158. doi:10.3389/fpubh.2019.00158

Journal of Multidisciplinary Healthcare

Dovepress

Publish your work in this journal

The Journal of Multidisciplinary Healthcare is an international, peer-reviewed open-access journal that aims to represent and publish research in healthcare areas delivered by practitioners of different disciplines. This includes studies and reviews conducted by multidisciplinary teams as well as research which evaluates the results or conduct of such teams or healthcare processes in general. The journal covers a very wide range of areas and welcomes submissions from practitioners at all levels, from all over the world. The manuscript management system is completely online and includes a very quick and fair peer-review system. Visit <http://www.dovepress.com/testimonials.php> to read real quotes from published authors.

Submit your manuscript here: <https://www.dovepress.com/journal-of-inflammation-research-journal>