

Possible alternative carcinogenesis pathway featuring microsatellite instability in colorectal cancer stroma

N Matsumoto¹, T Yoshida¹, K Yamashita², Y Numata¹ and I Okayasu^{*,1}

¹Department of Pathology, Kitasato University School of Medicine, Kitasato 1-15-1, Sagami-hara, Kanagawa 228-8555, Japan; ²Department of Pathology, Kitasato University East Hospital, Asamizodai, Sagami-hara, Kanagawa 228-8520, Japan

Differential microsatellite instability (MSI) in tumour epithelial and stromal compartments has not been well examined for colorectal cancers. Using laser-captured microdissection, separate specimens of these compartments of 40 sporadic colorectal cancers were sampled and MSI was tested with four markers. To examine the relation between the MSI phenotype in the stroma and other genetic events and histopathological features, p53 and K-ras gene mutations were analysed, and the expression of p53, hMLH1, and hMSH2 protein was determined by immunohistochemistry. Microsatellite instability positive results were obtained for both epithelium (34%) and stromal tissue (41%). While MSI in epithelium correlated with differentiation and Dukes' stage, that in stroma demonstrated an inverse relation, being particularly frequent in well-differentiated adenocarcinomas (54%) and Dukes' A lesions (55%). Further, a significant inverse correlation between p53 protein overexpression in the epithelium and MSI in the stroma was found ($P=0.02475$). The results suggest an alternative pathway of carcinogenesis involving stromal genetic instability in the development of colorectal cancers.

British Journal of Cancer (2003) 89, 707–712. doi:10.1038/sj.bjc.6601141 www.bjcancer.com
© 2003 Cancer Research UK

Keywords: microsatellite instability; stroma; epithelium; colorectal cancer; p53

Interactions between epithelial and mesenchymal cells in the various organs play important roles in their development (Marsh and Trier, 1974; Shekhar *et al*, 2001), differentiation (Camps *et al*, 1990; Hom *et al*, 1998) and growth (Camps *et al*, 1990; Hom *et al*, 1998). However, the contribution of stromal cells to the generation and progression of epithelial neoplasia has not been thoroughly investigated. Although genetic alterations are frequently observed in many benign and malignant epithelial tumours in the form of microsatellite instability (MSI) (Michael-Robinson *et al*, 2001; Ward *et al*, 2001), the possibility of genetic abnormalities in the background microenvironment of these tumours has generally not been addressed properly. However, recent findings indicate that loss of heterozygosity (LOH) may be frequent in mammary stromal tissue in breast cancer patients (Moinfar *et al*, 2000). In one series of sporadic colorectal cancers, it was found that approximately 15% of tumours demonstrated MSI (Michael-Robinson *et al*, 2001). Since data on MSI in stroma of colorectum have hitherto not been published, to our knowledge, here we investigated this point with reference to clinicopathological features of colorectal cancers, using laser-captured microdissection. A recent study showed high p53 gene mutation loads in ulcerative colitis with an inflammatory microenvironment predisposed to colorectal carcinoma (Hussain *et al*, 2000; Yoshida *et al*, 2003). To test the hypothesis that genetic instability in the p53 locus stage might be a key early event in tumorigenesis, with change in the stroma possible influencing epithelial tumorigenesis,

microsatellite markers D17S796 (Gyapay *et al*, 1994), TP53 and D17S786 (Gyapay *et al*, 1994), located in the short arm of chromosome 17 within 4cM proximity to the p53 gene (17p13), and D17S579 (17q21) (Anderson *et al*, 1993) in the long arm of the chromosome 17 were analysed here in a series of sporadic colorectal cancers.

MATERIALS AND METHODS

Samples and preparation

In total, 40 surgically resected sporadic colorectal adenocarcinomas from patients, 24–89-years old, undergoing treatment at Kitasato University Hospital and Kitasato University East Hospital, were randomly selected. Histological typing was performed according to the criteria of the Japanese Society for Cancer of the Colon and Rectum (Jinnai, 1983) and also Dukes' classification.

On surgical removal, tissues were immediately frozen with liquid nitrogen in OCT compound for storage at -80°C . Frozen sections 10 (10 μm thick) were fixed in 70% alcohol and stained with Mayer's haematoxylin. Neoplastic epithelial and adjacent stromal tissues in the lamina propria were carefully microdissected with a laser-captured microdissection system (LM200, Arcturus, Mountain View, CA, USA) to avoid contamination (Figure 1A). Tissues from whole sections, including both epithelial and stromal elements (mixed), were also manually dissected. Tumour tissues with strong inflammatory cell infiltration were excluded from study. Likewise, normal mucosa from the colorectum of the same patients was sampled and processed as an internal control. Tissues were lysed in sodium dodecyl sulphate-lysis buffer with proteinase

*Correspondence: Dr I Okayasu; E-mail: isaokaya@med.kitasato-u.ac.jp
Received 23 September 2002; revised 30 April 2003; accepted 14 May 2003

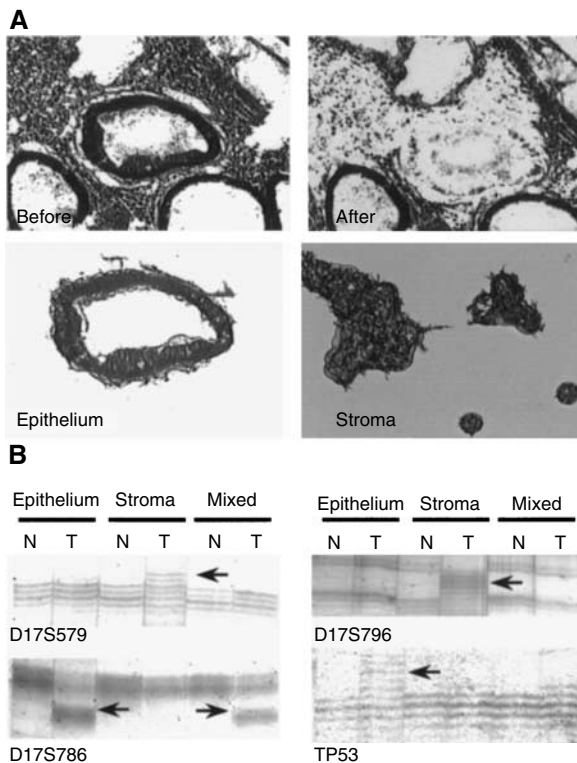


Figure 1 (A) Example of microdissection of epithelial cells and adjacent stromal cells from a single histologic section. Original magnification, $\times 100$. (B) Representative data from microsatellite analysis of sporadic colorectal cancers. Arrows indicate shifted bands reflecting microsatellite instability. N = normal mucosa; T = tumour tissue.

K, and DNA was extracted with the standard phenol–chloroform–ethanol precipitation method.

Microsatellite analysis

The polymerase chain reaction (PCR) was performed for four microsatellite markers, D17S796, TP53 (forward: 5'-ACTGC-CACTCCTTGCCCCATTC-3', reverse: 5'-CACCTCGGGCTGAA-TAGTATCCCT-3'), D17S786, and D17S579, selected for analysing allelic instability in chromosome 17. Microdissected DNA (5–10 ng) was amplified with a Rapid Cyclor (Idaho Technology, Idaho falls, ID, USA) and *Takara Ex Taq* DNA polymerase (Takara, Kyoto, Japan) under conditions as follows: 94°C for 3 min as the initial step, 35 cycles of 0 s at 94°C, 0 s at an appropriate temperature for each marker amplification, 6 s at 74°C, and a final step of 74°C for 3 min. The PCR products were fractionated by 3.6% polyacrylamide gel electrophoresis, fixed with 10% formalin and visualised using a Silver Stain Plus Kit (Bio-Rad, Hercules, CA, USA).

Results for normal tissues were considered informative when two or three (because some samples were insufficient for PCR amplification even if the experiment was repeated) of three samples, including epithelium, stroma, and mixed tissue DNA from each case, exhibited identical banding patterns. In pairs with informative normal tissue, sufficient PCR amplification of tumour tissues was considered as informative and MSI was defined as either a marked alteration in repeat length or as a new discrete band above or below the expected allele (Figure 1B). We referred to a previous report to judge whether the samples were informative (Luttges *et al*, 2001). Cases for which pairs of samples were informative for two of four markers were defined as informative

and those showing MSI positivity (MSI+) for at least one marker were considered as MSI+.

Immunohistochemistry and p53 and K-ras gene analysis

To analyse p53, hMLH1, and hMSH2 protein expression and for assessment of p53 and K-ras gene mutations, tissues were fixed routinely in 10% buffered formalin and embedded in paraffin. Serial sections (3 μ m thick) were applied for haematoxylin and eosin staining, immunohistochemistry, and mutation analyses.

Immunohistochemical staining was performed with monoclonal anti-p53 (DO7, $\times 300$ dilution, Novocastras Lab., Newcastle, UK), monoclonal anti-hMLH1 (Clone; G168-15, $\times 200$ dilution, BD PharMingen, San Diego, CA, USA) and monoclonal anti-hMSH2 (Clone; G219-1129, $\times 500$ dilution, BD PharMingen) antibodies, using the standard labelled streptavidin–biotin–peroxidase complex method described in our previous report (Yamashita *et al*, 2001). The amounts of positive cells were expressed as the percentage of the total number of epithelial cells and assigned to one of three categories for p53: ++, > 50%; +, 0.5–50%; –, < 0.5% (Figure 3I–K), for hMLH1 and hMSH2: ++, > 50%; +, 10–50%; –, < 10% (Figure 3A–F). We also examined the expression of hMLH1 and hMSH2 proteins in stromal cells, with classification into: ++, strong staining; +, focal staining; –, negative staining. Definite nuclear staining of adjacent non-neoplastic epithelial and stroma cells or lymphocytes served as internal positive controls.

p53 and K-ras gene mutations were analysed by the PCR–single strand conformation polymorphism (SSCP) method described in our previous report (Yamashita *et al*, 2001). Mutations were detected as abnormally shifted bands.

Statistics

Differences for each category of clinicopathological features, with reference to MSI in the epithelium and stroma were examined using the Fisher's exact and χ^2 tests.

RESULTS

MSI status

Microsatellite instability was frequently detected in epithelial and stromal areas of sporadic colorectal cancers (Table 1). Of the 40 colorectal cancers studied, 13 out of 38 informative cases (34%) were MSI+ for one or more of the markers in tumour epithelium, 16 out of 39 cases (41%) in adjacent stromal areas, and nine of 40 (23%) in mixed tissue. MSI+ for two or more markers was found in three cases in the epithelium and two in stroma. While MSI was slightly more common in the stroma than epithelium, the difference did not reach significance (Table 1). For each component, only three cases had MSI in both epithelium and stroma for the same markers (two for TP53 and one for D17S796), suggesting appropriate microdissection without contamination. Others showed MSI specific to the epithelium alone, stroma alone, epithelium and mixed tissue (Figure 1B; D17S786), or stroma and mixed tissue. All the tumours with MSI in mixed tissue also demonstrated MSI in epithelium and stroma. A comparison of MSI frequency for each marker between the epithelium and stroma revealed stromal MSI+ to be less frequent (1/36 = 3%) than epithelial MSI+ (6/37 = 16%) for D17S786 ($P = 0.0512$) (Table 1). With D17S796, MSI was more often found in the stroma (8/33 = 24%) than in the epithelium (4/36 = 11%), without significance (Table 1). No differences were found for D17S579 and TP53. Concerning the low MSI frequency for mixed tissue as compared with the epithelium or stroma alone, MSI–DNA might disturb the positivity with MSI-PCR due to lowered sensitivity.

Histopathological features of epithelial and stromal MSI status

Histopathological and molecular features of the sporadic colorectal cancers are detailed in Table 2. MSI frequencies differed between epithelium and stroma in well-differentiated (P -value = 0.0393) and poorly differentiated (P -value = 0.0510) (Figure 2A) adenocarcinomas. Stromal MSI+ was more often detected in well-differentiated adenocarcinomas (7/13 = 54%) than in poorly differentiated cancers (1/10 = 10%) (P -value = 0.0286), whereas the frequency of epithelial MSI+ correlated with progression (Figure 2A). With analysis of Dukes' stage, although there was a tendency for an inverse relation with stromal MSI+ (Figure 2B), it did not reach significance (P -value = 0.4807). In contrast, epithelial MSI+ showed significant variation with the Dukes' stage (P -value = 0.0277) (Figure 2B).

A significant correlation was also detected between epithelial MSI+ and stromal MSI+ and Dukes' stage (P -value = 0.0455). It is notable that in stage A lesions, stromal MSI+ (6/11 = 55%) was more frequent than epithelial MSI+ (0/10 = 0%) (P -value = 0.0057) (Figure 2B).

MSI status, p53 gene mutations, and p53 protein overexpression

A significant inverse correlation between p53 protein overexpression in epithelium and MSI in stroma was found (7/10 = 70% in '+' cases vs 6/22 = 27% in '++' cases) (P -value = 0.02475) (Figure 2C). p53 gene mutations were detected in 15 out of 40 (38%) tumours with no significant differences observed with reference to epithelial and stromal MSI (Table 2).

Table 1 MSI frequencies for each microsatellite marker

Marker	MSI+ samples/informative samples		P-value	MSI+ samples/informative samples	
	Epithelium	Stroma		Mixed tissue	
D17S796	4/36 (11%)	8/33 (24%)	0.1506	1/38 (3%)	
TP 53	6/35 (17%)	6/35 (17%)	0.9999	5/37 (14%)	
D17S786	6/37 (16%)	1/36 (3%)	0.0512	3/40 (8%)	
D17S579	4/36 (11%)	3/37 (8%)	0.6631	4/39 (10%)	
Total	13/38 (34%)	16/39 (41%)	0.5372	9/40 (23%)	

Significance was determined by the χ^2 test (epithelium vs stroma). Total refers to informative cases that showed MSI+ for at least one marker.

Table 2 MSI findings for the epithelium and stroma, with reference to tumour features

Variable	Total cases	MSI+ cases /informative cases		P-value	MSI+ cases/informative cases	
		Epithelium	Stroma		Mixed tissue	
<i>Location</i>						
Right side	14	6/14 (43%)	7/14 (50%)	0.3549	4/14 (29%)	
Left side	26	7/24 (29%)	9/25 (36%)	0.1388	5/26 (19%)	
<i>Differentiation</i>						
Well	14	2/13 (15%)	7/13 (54%)	0.0393*	2/14 (14%)	
Moderate	16	6/15 (40%)	8/16 (50%)	0.5761	5/16 (31%)	
Poor	10	5/10 (50%)	1/10 (10%)	0.0510**	2/10 (20%)	
<i>Dukes' stage</i>						
A	11	0/10 (0%)	6/11 (55%)	0.0057*	1/11 (9%)	
B	12	6/12 (50%)	5/12 (42%)	0.6820	4/12 (33%)	
C	17	7/16 (44%)	5/16 (31%)	0.4652	4/17 (24%)	
<i>p53 mutation</i>						
+	15	4/13 (31%)	5/14 (36%)	0.7854	4/15 (27%)	
-	25	9/25 (36%)	11/25 (44%)	0.5637	5/25 (20%)	
<i>K-ras mutation</i>						
+	12	5/11 (45%)	6/11 (55%)	0.6698	4/12 (33%)	
-	28	8/27 (30%)	10/27 (37%)	0.6307	5/28 (18%)	
<i>p53 protein</i>						
-	7	1/7 (14%)	3/7 (43%)	0.5594	1/7 (14%)	
+	10	3/10 (30%)	7/10 (70%)	0.0943**	3/10 (30%)	
++	23	9/21 (43%)	6/22 (27%)	0.5127	5/23 (22%)	
<i>hMLH1 protein</i>						
-		2/4 (50%) ^a	1/1 (100%) ^b			
+		0/6 (0%)	12/30 (40%)			
++		11/27 (40%)	3/7 (43%)			
<i>hMSH2 protein</i>						
-		0/1 (0%) ^a	0/0 (0%) ^b			
+		3/9 (33%)	16/35 (46%)			
++		10/25 (40%)	0/2 (50%)			

Significance was determined by the χ^2 test and Fisher's exact test (epithelium vs stroma). 'MSI+ cases' refer to cases that showed MSI+ for at least one marker. * $P < 0.05$, ** $P < 0.1$. ^a n = The cases of hMLH1 or hMSH2 protein expression in epithelial cells. ^b n = The cases of hMLH1 or hMSH2 protein expression in stromal cells.

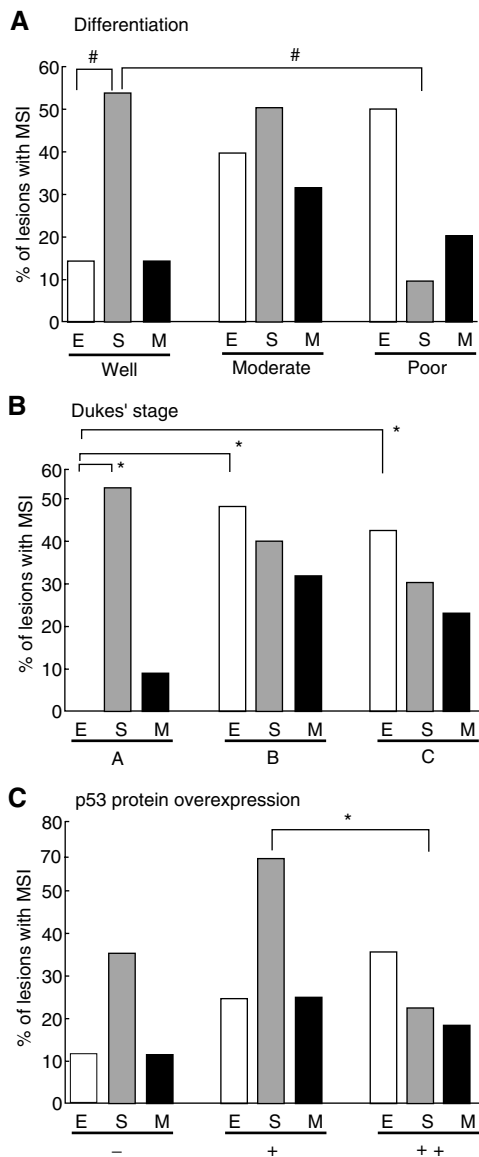


Figure 2 Data for MSI with reference to tumour features. E = epithelium; S = stroma; M = mixed tissue. * $P < 0.01$; # $P < 0.05$.

MSI status and *K-ras* gene mutation

K-ras gene mutations were detected in 12 out of 40 (30%) tumours with no significant differences observed with reference to epithelial and stromal MSI (Table 2).

hMLH1 and hMSH2 protein expression in epithelial and stromal MSI

Losses of hMLH1 and hMSH2 expression were detected in 10% (4/40) and 3% (1/40) of cases in the epithelium and 3% (1/40) and 0% (0/40) in the stroma, respectively. No significant correlations between hMLH1 and hMSH2 protein expression in epithelial or stromal cells and epithelial MSI+ or stromal MSI+ were found (Table 2) (P -value not shown).

DISCUSSION

Regarding interactions between the epithelium and stroma, several hypotheses have been proposed to explain fibroblast-promoting

effects on tumour growth. Most of the intercellular material, the extracellular matrix (ECM) molecules that are required for tumour growth and progression, is produced by stromal cells (Noel *et al*, 1998). It has been demonstrated that neoplastic breast stroma drives alteration in gene expression as compared with normal tissue (Leygue *et al*, 1998). In fact, it is generally believed that the epithelium is the neoplastic element in most tumours and that altered gene expression in stroma occurs as the secondary reaction. However, the recent finding of frequent genetic changes in mammary stromal tissue in breast cancer patients (Moinfar *et al*, 2000), and the demonstration that inflammation-associated stroma promotes conversion of colonic adenoma cells to adenocarcinoma cells in nude mice (Okada *et al*, 2000) suggest a more complex scenario.

Our present study showed that MSI in stromal and epithelial elements can occur independently in sporadic colorectal cancers, in line with the previous findings for breast carcinomas (Kurose *et al*, 2001). Further, while MSI in the epithelium tended to correlate with differentiation and the Dukes' stage, the inverse was the case for MSI in stroma. These interesting results strongly suggest that there are alternative mechanisms involving stromal MSI operating in colorectal carcinogenesis and progression. According to Young *et al*, methylation of CpG island occurs both in the epithelium and stroma (Young *et al*, 2001). Stromal MSI presented in this study might be due to the methylation of mismatch repair enzymes in stromal cells, although the identification of the enzyme remains unclear. Previously, it was shown that high-level MSI (MSI-H) tumours are more likely to be right sided than their low-level MSI (MSI-L) or MSI stable counterparts (Michael-Robinson *et al*, 2001; Ward *et al*, 2001). In the present study, while MSI frequencies in both the epithelium and stroma were high in right-side (43, 50%) as compared to left-side lesions (29, 36%), the difference did not reach statistical significance. This might be due to relatively small numbers of examined cases or inclusion of both MSI-L and MSI-H results in our analysis. Additionally, we examined the expression of DNA mismatch repair enzymes, hMLH1 and hMSH2 protein, in epithelial and stromal cells, respectively, as the MSI-H phenotype has been suggested to be of importance for the DNA mismatch repair system in sporadic colorectal cancers (Dietmaier *et al*, 1997; Ward *et al*, 2001). In the present study, epithelial MSI+ for two or more markers was found in three cases, two of which showed loss of hMLH1 protein expression. In stroma, MSI+ for two or more markers was found in two cases, one of which showed loss of MLH1 in stromal cells (Figure 3G and H). Although we have not used the standard markers that were recommended for MSI analysis on the basis of a National Cancer Institute Workshop (Boland *et al*, 1998), the results of hMLH1 and hMSH2 protein expression provide support for the validity of our study of MSI in epithelial and stromal cells. NCI-recommended standard markers are two mononucleotide repeat markers and three dinucleotide markers, but all of the markers we used in this study are dinucleotide repeat markers ((CA)_n repeat). Therefore, it is difficult to compare MSI-H entity with our MSI+ for two or more markers. Additionally, discordance of the loss of hMLH1 or hMSH2 and our MSI+ tumours could occur in the present study.

Although no significant links were found between MSI and p53 or *K-ras* gene mutations, MSI in the epithelium, but not stroma, tended to correlate positively with p53 protein overexpression. Recently, Kapiteijn *et al*. (2001) reported that p53 gene mutation corresponds more often to p53 overexpression in left- than in right-sided tumours, suggesting that mechanisms of oncogenesis may differ between the two cases. This is in line with our results for a greater prevalence of p53 overexpression with p53 gene mutations in left-sided tumours (9/11, 81%), than in those found on the right side (1/4, 25%) ($P = 0.0390$, data not shown). Furthermore, we found a difference in the relation between p53 mutations and stromal MSI (stromal MSI+ /p53 mutation, 3/11 (27%) in the left-side; 3/4 (75%) in the right-side, $P = 0.0952$).

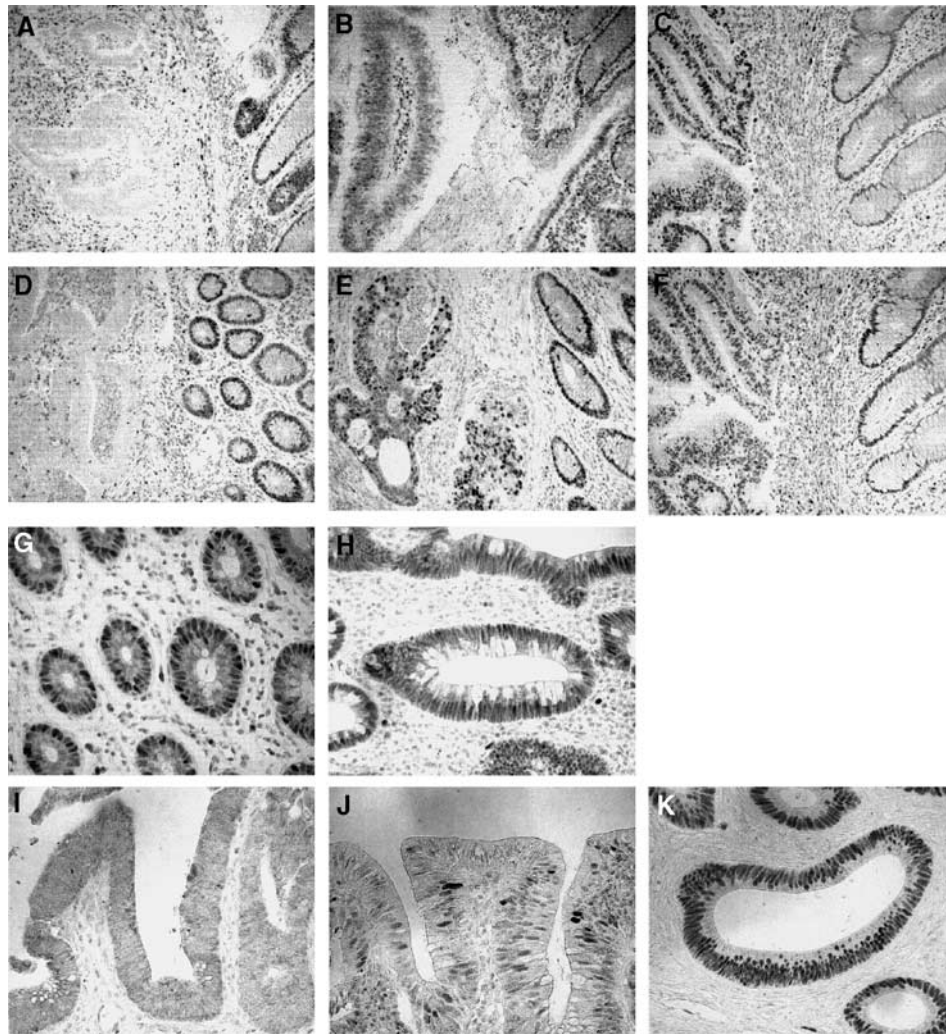


Figure 3 Expression of hMLH1, hMSH2, and p53 protein. Examples of hMLH1 (A–C) and hMSH2 (D–F) protein immunostaining in tumorous epithelial cells. (A) and (D) – in epithelial cells; + in stromal cells (B) and (E) + in epithelial cells; + in stromal cells. (C) and (F) ++ in epithelial cells; ++ in stromal cells. Original magnification, $\times 200$. (G) hMLH1 protein expression in normal stromal cells. (H) Loss of hMLH1 protein expression in tumorous stromal cells from the same case. Original magnification, $\times 400$. Examples of p53 protein immunostaining in sporadic colorectal cancers (I–K). (I) – for p53 protein expression; (J) +; (K) ++. Original magnification, $\times 400$.

These results support the conclusion of Kapiteijn *et al.* (2001) and suggest a relation of p53 mutation to stromal MSI +.

From the available data, contrary to the general belief that abnormalities in stroma occur as reactions to epithelial tumour cells, we propose the hypothesis that an alternative pathway may exist, with stromal genetic instability influencing epithelial cells in carcinogenesis.

REFERENCES

Anderson LA, Friedman L, Osborne-Lawrence S, Lynch E, Weissenbach J, Bowcock A, King MC (1993) High-density genetic map of the BRCA1 region of chromosome 17q12–q21. *Genomics* **17**: 618–623

Boland CR, Thibodeau SN, Hamilton SR, Sidransky D, Eshleman JR, Burt RW, Meltzer SJ, Rodriguez-Bigas MA, Fodde R, Ranzani GN, Srivastava S (1998) A National Cancer Institute Workshop on Microsatellite Instability for cancer detection and familial predisposition: development of international criteria for the determination of microsatellite instability in colorectal cancer. *Cancer Res* **58**: 5248–5257

Camps JL, Chang SM, Hsu TC, Freeman MR, Hong SJ, Zhou HE, von Eschenbach AC, Chung LW (1990) Fibroblast-mediated acceleration of human epithelial tumour growth in vivo. *Proc Natl Acad Sci USA* **87**: 75–79

ACKNOWLEDGEMENTS

This work has been supported by Grants-in-Aid for Scientific Research from the Japanese Ministry of Education, Culture, Sports, Science and Technology (no. 13214093), and Scientific Research from Kitasato University Postgraduate School of Medical Sciences (no. 4002).

Dietmaier W, Wallinger S, Bocker T, Kullmann F, Fishel R, Ruschoff J (1997) Diagnostic microsatellite instability: definition and correlation with mismatch repair protein expression. *Cancer Res* **57**: 4749–4756

Gyapay G, Morissette J, Vignal A, Dib C, Fizames C, Millasseau P, Marc S, Bernardi G, Lathrop M, Weissenbach J (1994) The 1993–94 Genethon human genetic linkage map. *Nat Genet* **7**: 246–339

Hom YK, Young P, Wiesen JF, Miettinen PJ, Derynck R, Werb Z, Cunha GR (1998) Uterine and vaginal organ growth requires epidermal growth factor receptor signaling from stroma. *Endocrinology* **139**: 913–921

Hussain SP, Amstad P, Raja K, Ambs S, Nagashima M, Bennett WP, Shields PG, Ham AJ, Swenberg JA, Marrogi AJ, Harris CC (2000) Increased p53 mutation load in noncancerous colon tissue from

- ulcerative colitis: a cancer-prone chronic inflammatory disease. *Cancer Res* **60**: 3333–3337
- Jinnai D (1983) General rules for clinical and pathological studies on cancer of the colon, rectum and anus. *Part I. Clinical classification. Japanese Research Society for Cancer of the Colon and Rectum. Jpn J Surg* **13**: 557–573
- Kapiteijn E, Liefers GJ, Los LC, Kranenbarg EK, Hermans J, Tollenaar R.A., Moriya Y, van de Velde CJ, van Krieken JH (2001) Mechanisms of oncogenesis in colon versus rectal cancer. *J Pathol* **195**: 171–178
- Kurose K, Hoshaw-Woodard S, Adeyinka A, Lemeshow S, Watson PH, Eng C (2001) Genetic model of multi-step breast carcinogenesis involving the epithelium and stroma: clues to tumour-microenvironment interactions. *Hum Mol Genet* **10**: 1907–1013
- Leygue E, Snell L, Dotzlaw H, Hole K, Hiller-Hitchcock T, Roughley PJ, Watson PH, Murphy LC (1998) Expression of lumican in human breast carcinoma. *Cancer Res* **58**: 1348–1352
- Luttges J, Galehdari H, Brocker V, Schwarte-Waldhoff I, Henne-Bruns D, Kloppel G, Schmiegel W, Hahn SA (2001) Allelic loss is often the first hit in the biallelic inactivation of the p53 and DPC4 genes during pancreatic carcinogenesis. *Am J Pathol* **158**: 1677–1683
- Marsh MN, Trier JS (1974) Morphology and cell proliferation of subepithelial fibroblasts in adult mouse jejunum. *II. Radioautographic studies. Gastroenterology* **67**: 636–645
- Michael-Robinson JM, Biemer-Huttmann A, Purdie DM, Walsh MD, Simms LA, Biden KG, Young JP, Leggett BA, Jass JR, Radford-Smith GL (2001) Tumour infiltrating lymphocytes and apoptosis are independent features in colorectal cancer stratified according to microsatellite instability status. *Gut* **48**: 360–366
- Moinfar F, Man YG, Arnould L, Bratthauer GL, Ratschek M, Tavassoli FA (2000) Concurrent and independent genetic alterations in the stromal and epithelial cells of mammary carcinoma: implications for tumorigenesis. *Cancer Res* **60**: 2562–2566
- Noel A, Hajitou A, L'Hoir C, Maquoi E, Baramova E, Lewalle JM, Remacle A, Kebers F, Brown P, Calberg-Bacq CM, Foidart JM (1998) Inhibition of stromal matrix metalloproteases: effects on breast-tumor promotion by fibroblasts. *Int J Cancer* **76**: 267–273
- Okada F, Kawaguchi T, Habelhah H, Kobayashi T, Tazawa H, Takeichi N, Kitagawa T, Hosokawa M (2000) Conversion of human colonic adenoma cells to adenocarcinoma cells through inflammation in nude mice. *Lab Invest* **80**: 1617–1628
- Shekhar MP, Werdell J, Santner SJ, Pauley RJ, Tait L (2001) Breast stroma plays a dominant regulatory role in breast epithelial growth and differentiation: implications for tumor development and progression. *Cancer Res* **61**: 1320–1326
- Ward R, Meagher A, Tomlinson I, O'Connor T, Norrie M, Wu R, Hawkins N (2001) Microsatellite instability and the clinicopathological features of sporadic colorectal cancer. *Gut* **48**: 821–829
- Yamashita K, Yoshida T, Shinoda H, Okayasu I (2001) Novel method for simultaneous analysis of p53 and K-ras mutations and p53 protein expression in single histologic sections. *Arch Pathol Lab Med* **125**: 347–352
- Yoshida T, Mikami T, Mitomi H, Okayasu I (2003) Diverse p53 alterations in ulcerative colitis-associated low-grade dysplasia: full-length gene sequencing in microdissected single crypts. *J Pathol* **199**: 166–175
- Young J, Biden KG, Simms LA, Huggard P, Karamatic R, Eyre HJ, Sutherland GR, Herath N, Barker M, Anderson GJ, Fitzpatrick DR, Ramm GA, Jass JR, Leggett BA (2001) HPP1: a transmembrane protein-encoding gene commonly methylated in colorectal polyps and cancers. *Proc Natl Acad Sci USA* **98**: 265–270