

## RESEARCH ARTICLE

# Comparisons of diazotrophic communities in native and agricultural desert ecosystems reveal plants as important drivers in diversity

Martina Köberl<sup>1,\*†</sup>, Armin Erlacher<sup>1</sup>, Elshahat M. Ramadan<sup>2,3</sup>,  
Tarek F. El-Arabi<sup>2,3</sup>, Henry Müller<sup>1</sup>, Anastasia Bragina<sup>1</sup> and Gabriele Berg<sup>1</sup>

<sup>1</sup>Institute of Environmental Biotechnology, Graz University of Technology, 8010 Graz, Austria, <sup>2</sup>Faculty of Agriculture, Ain Shams University, 11566 Cairo, Egypt and <sup>3</sup>Biotechnology Laboratory, Heliopolis University, 11777 Cairo, Egypt

\*Corresponding author: Petersgasse 12/I, 8010 Graz, Austria. Tel: +43 316 873-8423; Fax: +43 316 873-8819; E-mail: [martina.koeberl@tugraz.at](mailto:martina.koeberl@tugraz.at)

†Present address: Pacific Northwest National Laboratory, Biological Sciences Division, Richland, WA 99354, USA. Tel: +1 509 371-6925

**One sentence summary:** The diazotrophic microbiome of desert ecosystems is characterized by a high diversity and abundance and specific for each plant rhizosphere.

Editor: Angela Sessitsch

## ABSTRACT

Diazotrophs provide the only biological source of fixed atmospheric nitrogen in the biosphere. Although they are the key player for plant-available nitrogen, less is known about their diversity and potential importance in arid ecosystems. We investigated the nitrogenase gene diversity in native and agricultural desert soil as well as within root-associated microbiota of medicinal plants grown in Egypt through the combination of *nifH*-specific qPCR, fingerprints, amplicon pyrosequencing and fluorescence *in situ* hybridization–confocal laser scanning microscopy. Although the diazotrophic microbiota were characterized by generally high abundances and diversity, statistically significant differences were found between both soils, the different microhabitats, and between the investigated plants (*Matricaria chamomilla* L., *Calendula officinalis* L. and *Solanum distichum* Schumach. and Thonn.). We observed a considerable community shift from desert to agriculturally used soil that demonstrated a higher abundance and diversity in the agro-ecosystem. The endorhiza was characterized by lower abundances and only a subset of species when compared to the rhizosphere. While the microbiomes of the *Asteraceae* were similar and dominated by potential root-nodulating rhizobia acquired primarily from soil, the perennial *S. distichum* generally formed associations with free-living nitrogen fixers. These results underline the importance of diazotrophs in desert ecosystems and additionally identify plants as important drivers in functional gene pool diversity.

**Keywords:** desert farming; diazotrophs; medicinal plants; nitrogen-fixing communities; organic agriculture; *Rhizobiales*

## INTRODUCTION

Nitrogen is one of the most yield-limiting factors in agricultural production systems throughout the world and an essential macronutrient for plants. Nitrogen-fixing microorganisms provide the only natural source of fixed atmospheric nitrogen in the

biosphere (Gaby and Buckley 2012), and the capability for nitrogen fixation is widely dispersed among prokaryotic taxa including very divergent, distantly related bacteria and archaea (Zehr and Turner 2001; Zehr *et al.* 2003). Biological nitrogen fixation by diazotrophic bacteria together with the input of recycled organic waste, such as manure or compost, is considered a sustainable

Received: 17 August 2015; Accepted: 17 December 2015

© FEMS 2015. This is an Open Access article distributed under the terms of the Creative Commons Attribution License (<http://creativecommons.org/licenses/by/4.0/>), which permits unrestricted reuse, distribution, and reproduction in any medium, provided the original work is properly cited.

alternative to chemical nitrogen fertilizers and a possibility to reduce rates of inorganic fertilizer application (Yang, Kloepper and Ryu 2009). The dispersal of inorganic nitrate into surface and groundwater often leads to eutrophication and severe environmental and health problems, yet can be largely avoided through biological inoculants (Orr et al. 2011).

The *nifH* gene that encodes the nitrogenase reductase subunit is highly conserved over all nitrogenase types and has become the marker gene for studies of phylogeny, diversity and abundance of diazotrophic microorganisms (Zehr and Turner 2001). Phylogenetic analyses of *nifH* genes have revealed five primary clusters of homologous genes (Raymond et al. 2004; Gaby and Buckley 2012). Although a wide range of environments has already been investigated for *nifH* gene diversity (López-Lozano et al. 2012; Farnelid et al. 2013; Yousuf et al. 2014), the global census of diazotrophic diversity remains far from complete (Gaby and Buckley 2011, 2012). Next-generation sequencing techniques in combination with network analyses will allow a deeper insight into microbiome functioning involving nitrogen fixation.

Microbial viability and bioactivity play an important role in arid terrestrial ecosystems. Our previous research in desert ecosystems showed a higher indigenous antagonistic potential against soil-borne phytopathogens, a higher overall bacterial diversity, and better ecosystem function for plant health in soil used for desert agriculture in comparison to uncultivated native desert soil (Köberl et al. 2011, 2013). Based on these results, we hypothesized (i) that the agricultural use of desert soil, especially crop rotation with leguminous cover crops, also enhances the diversity of the nitrogen-fixing underground communities. Plant specificity of associated bacteria as well as co-evolution of plant-microbe interactions are well-studied (Berg and Smalla 2009; Bulgarelli et al. 2012; Oldroyd 2013), and root exudates are some of the most important drivers for this selecting effect from the soil microbiome (Bais et al. 2006). Because we observed such a high specificity in the structural microbial diversity associated with medicinal plants (Köberl et al. 2013), we hypothesized (ii) that this high specificity is visible in the functional *nifH* gene pool as well. All three selected plants for this study—German chamomile (*Matricaria chamomilla* L.), pot marigold (*Calendula officinalis* L.) and African nightshade (*Solanum distichum* Schumach. and Thonn.)—are well-known for their anti-microbial effects and bioactive ingredients (McKay and Blumberg 2006; Ukiya et al. 2006; Bahgat et al. 2008). Although the highly specific association between *Rhizobiaceae* and legumes is well investigated (Oldroyd 2013), less is known about the interactions of diazotrophic bacteria with non-legumes. In recent years, endophytic rhizobia were detected in some non-legumes as well, e.g. in rice, maize, barley, wheat, canola and lettuce, colonizing both the intercellular and intracellular spaces of epidermis, cortex and vascular system. They were associated with general plant growth promotion and improved grain yields in cereal crops (Yanni et al. 2001; Chi et al. 2010). Due to the extensive organic soil management, we hypothesized (iii) that endophytic colonization with rhizobia occurs in non-leguminous plants cultivated on Sekem farms as well.

The objective of this research was to study the nitrogen-fixing communities in the endorhiza and rhizosphere of medicinal plants, and the bulk soil of long-term organically managed agricultural soil from the Sekem farms at Sharqia governorate in Egypt compared to unexploited native desert soil. We used a robust methodological approach combining *nifH*-specific qPCR, fingerprints and amplicon pyrosequencing. Complementary fluorescence *in situ* hybridization–confocal laser scanning

microscopy (FISH–CLSM) analyses targeting the most dominant diazotrophic taxa were performed in order to reveal their habitat preferences and colonization type.

## MATERIALS AND METHODS

### Experimental design and sampling

Nitrogen-fixing communities were studied at the organically managed Sekem farm Adleya ([www.sekem.com](http://www.sekem.com)) located in the north-eastern desert region of Egypt near Bilbeis (30°13'44"N, 31°23'39"E) at Sharqia governorate. Physicochemical data of the soil is provided in Luske and van der Kamp (2009). The diazotrophic community of bulk agricultural soil was also investigated in comparison to the community of native desert soil from the Sinai Peninsula, Egypt (30°21'00"N, 32°15'18"E). At each site, four composite samples of soil in a horizon of 10–30 cm depth were collected. Profiles of the *nifH* gene in communities associated with the rhizosphere and endorhiza of three different species of medicinal plants (*M. chamomilla* L., *C. officinalis* L., and *S. distichum* Schumach. and Thonn.) cultivated on Adleya farm were studied and compared. From each plant species, four independent composite samples consisting of 5–10 plant roots with adhering soil were taken. The detailed sampling strategy is described by Köberl et al. (2011).

To isolate total community DNA from the soil and rhizosphere, 5 g of soil or roots with adhering soil were added to 45 mL of sterile 0.85% NaCl and vortexed. For isolation from the endorhiza, 5 g of roots were surface-sterilized with 4% NaOCl for 5 min. The roots were washed three times with sterile distilled water, then 10 mL sterile 0.85% NaCl were added and further homogenized using mortar and pestle. For isolation of total DNA from the rhizosphere, endorhiza and soil, 4 mL of the suspensions were centrifuged (16,000 × *g*, 4°C) for 20 min and the resulting microbial pellets were stored at –70°C. In the desert soil, a lower concentration of DNA was expected. Therefore, the pellets of 10 mL suspension were used for the isolation of total DNA. Total community DNA was extracted using the FastDNA SPIN Kit for Soil (MP Biomedicals, Solon, OH, USA).

### Quantification of microbial *nifH* genes by qPCR

To determine *nifH* gene abundances, quantitative PCRs were performed according to Hai et al. (2009) with following modifications. Reactions were conducted in a total volume of 10 µL containing 1× KAPA SYBR FAST qPCR MasterMix Universal (PEQLAB, Polling, Austria), 0.6 mg mL<sup>-1</sup> BSA, 0.125 µM of primers *nifH*-F and *nifH*-R (Rösch, Mergel and Bothe 2002), and 0.8 µL template DNA dilutions with a concentration of ~1 ng µL<sup>-1</sup> (95°C, 10 min; 39 cycles of 95°C, 45 s; 55°C, 45 s; 72°C, 45 s; and melt from 72 to 95°C). Rotor-Gene 6000 real-time rotary analyzer (Corbett Research, Sydney, Australia) was used for fluorescence quantification. For absolute quantification, the PCR amplified *nifH* gene fragment from *Pectobacterium atrosepticum* SCRI1043 was ligated into the pGEM-T Easy Vector (Promega, Mannheim, Germany) and transformed into *Escherichia coli* DH5α. Serial dilutions of PCR fragments generated with the vector-specific primers USP and RSP (Köberl et al. 2011) were used as standards for calculation of *nifH* gene copy numbers. Concentrations determined by absolute quantification were calculated to copy number per g soil or fresh weight (fw) of root. Each replicate sample was analyzed in duplicates in three independent runs. Statistical analysis was performed with PASW Statistics 18 (SPSS Inc., Chicago, IL, USA) using the independent samples t-test for differences between

desert and agricultural soil, and the Games–Howell post hoc test for plant samples.

### Fingerprints from single-stranded conformational polymorphism analysis of the *nifH* gene

Fingerprinting of microbial communities using single-stranded conformational polymorphism was conducted as described by Schwieger and Tebbe (1998). Amplification of the *nifH* gene fragment was performed using a nested PCR approach with primer pairs *nifH4/nifH3* (Zani et al. 2000) and *nifH11/nifH22<sup>P</sup>* (Yeager et al. 2004). The obtained amplicons were separated and analyzed according to Bragina et al. (2012). Comparisons of SSCP generated *nifH* community profiles were performed using Gel-Compar II 5.1 (Applied Maths, Kortrijk, Belgium). The cluster analysis was performed with the following settings: dendrogram type: unweighted pair group method with arithmetic mean (UP-GMA); similarity coefficient: curve based: Pearson correlation; position tolerances: optimization: 0%, position tolerance: 1%. Based on the Pearson similarity matrix, a multidimensional scaling (MDS) ordination plot was constructed. Pearson correlation matrices were additionally subjected to significance tests of pair-wise similarities by applying permutation analyses ( $p \leq 0.05$ ) using the `permtest` package of R statistics 2.13.1 (The R Foundation for Statistical Computing, Vienna, Austria) with  $10^5$  random permutations of sample elements (Kropf et al. 2004; R Development Core Team 2011).

### *nifH* gene profiling using 454 pyrosequencing

The nitrogenase gene *nifH* was amplified according to a nested PCR protocol with primers designed by Zani et al. (2000). The first PCR was performed with the primer pair *nifH4/nifH3* as described above for SSCP analysis. Generated amplicons served as templates for the second PCR (30  $\mu$ L) with the primer pair *nifH1* and *nifH2* designed by Zehr and McReynolds (1989) that contained the 454 pyrosequencing adaptors, linkers, and sample-specific tags (Table S1). Accordingly, 3  $\mu$ L template dilutions were added to  $1 \times$  Taq&Go (MP Biomedicals, Solon, OH, USA), 1.5 mM  $MgCl_2$  and 0.2  $\mu$ M of each primer (95°C, 5 min; 30 cycles of 95°C, 1 min; 65.5°C, 1 min; 72°C, 30 s; and elongation at 72°C, 5 min). PCR products were purified by employing the Wizard SV Gel and PCR Clean-Up System (Promega, Madison, WI, USA). For rhizosphere samples, PCR products of two independent PCR reactions were pooled. For soil samples, respective PCR products from four independent replicate samples were pooled from each habitat in equal volumes. Pyrosequencing read libraries were sequenced by Eurofins Genomics (Ebersberg, Germany) using the Roche 454 GS-FLX+ Titanium sequencing platform. The nucleotide sequences are available in the European Nucleotide Archive ([www.ebi.ac.uk/ena](http://www.ebi.ac.uk/ena)) under the BioProject accession number PRJEB10243.

Primer sequences were cropped, reads with low quality (minimum average base quality score 20) and a read length shorter than 200 nucleotides were removed, and remaining sequences were translated into their amino acid sequence using the tool `FrameBot` of RDP's FunGene pipeline (Fish et al. 2013; Wang et al. 2013). All subsequent analyses were carried out based on amino acid sequence datasets that were normalized to the same number of sequences within a habitat (5217 sequences per soil sample and 553 sequences per rhizosphere sample) using `Subsetify` 1.4 (Bragina et al. 2013). Amino acid sequences were aligned and clipped at the same alignment reference position (~108 amino acids) by using `ClustalX` 2.1 (Larkin et al. 2007). OTUs were clas-

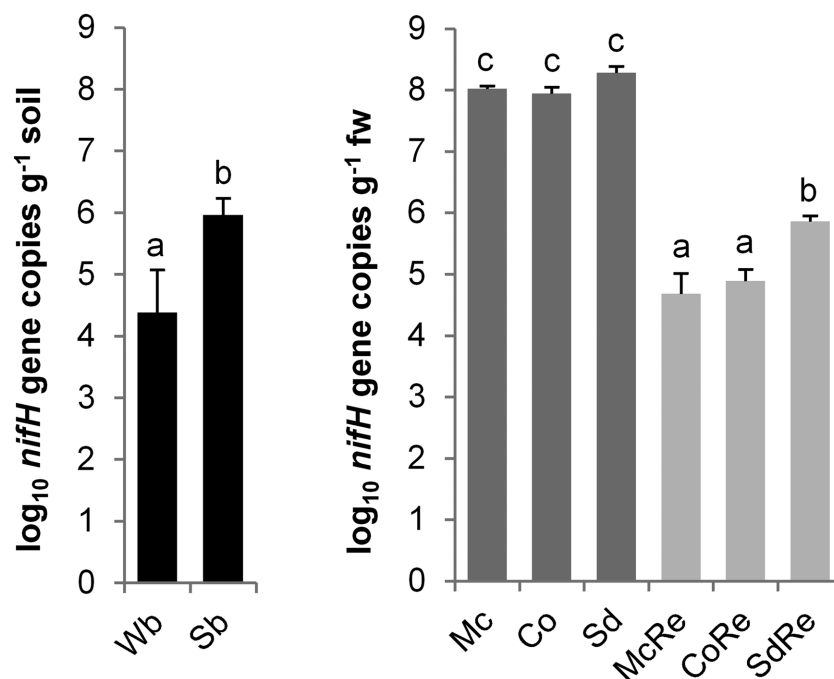
sified and rarefaction curves were constructed based on the distance matrices of amino acid sequences at 0%, 4% and 8% dissimilarity (Farnelid et al. 2011) using `mcClust` and rarefaction of RDP's FunGene pipeline. Diversity indices were ascertained based on the clustering data (Shannon 1997; Chao and Bunge 2002). Significant differences in diversity indices were calculated with PASW Statistics 18 using Tukey and Games–Howell post hoc tests, depending on the homogeneity of variances. Representative sequences at 8% dissimilarity were selected for the following taxonomic and phylogenetic analysis (Farnelid et al. 2011) where clusters with less than 1% of relative abundance were not designated. Nearest relatives were retrieved using the search tool `tblastn` of the NCBI database.

A neighbor-joining tree with 100 bootstrap replications was created with the tools `seqboot`, `protdist`, `neighbor`, `consense` and `fitch` of PHYLIP 3.69 (Felsenstein 1989). The phylogenetic tree was visualized and edited in MEGA4 (Tamura et al. 2007). A heatmap showing the number of sequences for each OTU was added. As an outgroup root, a partial sequence of the light-independent photochlorophyllide reductase subunit L (BchL) from *Chlorobaculum tepidum* (accession number AAG12203) was selected. Chlorophyllide reductases share a small but significant degree of similarity with *NifH* (Zehr and Turner 2001).

A profile clustering network analysis was performed in order to highlight single OTUs (8% dissimilarity) with considerable differences between the rhizospheres of the medicinal plants. The network analysis was carried out with OTUs exhibiting a mean read change between plants of more than 1% of the normalized dataset. If the ratio of mean OTU read numbers exceeded two, the OTUs were regarded as altered and assigned to the respective profile. Visualization of the network was carried out using `Cytoscape` 2.8.2 (Smoot et al. 2011). Significant differences between medicinal plants were calculated with `Metastats` (White et al. 2009). *P* values were computed using a combination of the nonparametric *t*-test, exact Fisher's test and the false discovery rate with  $10^3$  permutations.

### FISH and CLSM

In order to unravel habitat preferences and the colonization type of potential diazotrophs *in situ*, we carried out FISH–CLSM approaches using a robust set of specific fluorescent probes. The root system of *M. chamomilla* was used as representative subject. FISH was carried out as described by Cardinale et al. (2008). In brief, root samples were washed once with phosphate-buffered saline and then fixed in 4% paraformaldehyde. For the detection of *Alphaproteobacteria*, the Cy5-labeled ALF968 probe (Loy et al. 2007) was used. *Betaproteobacteria* were detected with the Atto488-labeled BET42a probe applied together with an unlabeled competitor probe to avoid unspecific hybridizations (Manz et al. 1992). An equimolar mixture of Cy3-labeled EUB338, EUB338II, and EUB338III probes (Amann et al. 1990; Daims et al. 1999) was used for the detection of all bacteria. In an additional ternary staining approach to visualize *Rhizobiales* with a high coverage, EUB338-MIX (Cy3) and ALF968 (Alexa488) were applied together with a combination of Cy5-labeled RHIZ1244 (Thayanukul et al. 2010) and RHIZ3r (Erlacher et al. 2015) probes. As negative controls, non-sense FISH probes labeled with all three fluorochromes (NONEUB) (Wallner, Amann and Beisker 1993) were applied. For better contrast, plant tissue sections were additionally stained by calcofluor-white staining (0.15% in  $H_2O$ , 15 min incubation). Micrographs were acquired with a Leica TCS SPE confocal laser scanning microscope (Leica Microsystems GmbH, Mannheim, Germany) using the oil immersion



**Figure 1.** Abundances of *nifH* genes in bulk soils, rhizosphere, and endorhiza of medicinal plants detected by qPCR. Wb = desert soil, Sb = agricultural soil; Mc = *M. chamomilla*, Co = *C. officinalis*, Sd = *S. distichum*; Re = endorhiza, rhizosphere has no further designation. Averages of *nifH* gene copy numbers per gram soil or root fresh weight (fw) as log<sub>10</sub> and confidences are shown. Significant differences between samples ( $p \leq 0.05$ ) are indicated by different letters.

objectives Leica ACS APO 40.0 × 1.15 (183.33 μm × 183.33 μm) and ACS APO 63 × 1.30 (116.40 μm × 116.40 μm). The Z-step was 0.7 μm. Solid state lasers were used with 405, 488, 532, 635 nm excitation. The colors red, green, and blue were assigned to the fluorochromes Cy3, Cy5 and Atto/Alexa488, respectively. Imaris 7.0 (Bitplane, Zurich, Switzerland) was used for micrograph post-processing and the assembly of iso-surface renderings.

## RESULTS

### Abundances of *nifH* genes in different underground communities

Analysis of *nifH* gene copy numbers resulted in a statistically significant higher abundance in the agriculturally used soil ( $6.0 \pm 0.3 \log_{10} \text{g}^{-1}$ ) in comparison to the native desert soil ( $4.4 \pm 0.7 \log_{10} \text{g}^{-1}$ ; Fig. 1). Among the medicinal plant-associated microenvironments, rhizospheres showed significantly higher *nifH* gene copy numbers than endorhiza samples. Calculated abundances in the rhizospheres ranged from  $7.9 \pm 0.1$  to  $8.3 \pm 0.1 \log_{10} \text{g}^{-1}$  root fresh weight (fw) and were not significantly different between medicinal plants. Conversely, the endorhiza of the perennial *S. distichum* was more significantly colonized by nitrogen-fixing microorganisms ( $5.9 \pm 0.1 \log_{10} \text{g}^{-1}$  fw) than the endorhizas of the annual Asteraceae *M. chamomilla* ( $4.7 \pm 0.3 \log_{10} \text{g}^{-1}$  fw) and *C. officinalis* ( $4.9 \pm 0.2 \log_{10} \text{g}^{-1}$  fw; Fig. 1).

### Molecular fingerprinting of diazotrophic underground communities

SSCP fingerprints of *nifH* genes in microbial communities revealed the first insight into diversity (Fig. S1, Supporting Information). According to the statistical comparison analysis (Fig. S2, Supporting Information), the diazotrophic community composition of field soil differed significantly from the less

diverse desert soil ( $p = 0.0286$ ) by approximately 70%. Rhizospheres exhibited significantly different profiles from bulk agricultural soil ( $p = 0.0005$ ) as well as from the inner tissue of the root ( $p < 0.0001$ ). Also, statistically significant differences in nitrogen-fixing rhizosphere communities were detected between the three different medicinal plants ( $p$  values between 0.0285 and 0.0290). Approximately half of the *nifH* gene community was shared by all three plants; *M. chamomilla* and *C. officinalis* were more similar to each other, but still nearly 40% of their communities were determined by plant-specific nitrogen fixers (Fig. S2, Supporting Information). Dominant bands were identified as *Rhizobium*, *Bradyrhizobium* and *Burkholderia*. Furthermore, *Paenibacillus* spp. were assigned to dominant endorhiza bands. Throughout all plant-associated microenvironments, several cyanobacteria from the genera *Anabaena* and *Nostoc* were found. Additionally, the *nifH* gene sequence of the methanogenic archaeon *Methanocella* was identified (Fig. S1, Supporting Information).

### Pyrosequencing-based *nifH* profiling

A pyrosequencing-based analysis of the *nifH* gene was employed to gain a deeper insight into the diazotrophic community composition and diversity in soils and medicinal plant rhizospheres. Normalized *NifH* sequence datasets were rarefied at three cut-off levels (0%, 4% and 8% amino acid dissimilarity; Fig. S3, Supporting Information). Sequences from both soil types (10 434 reads) were classified into 361 OTUs with a dissimilarity cut-off of 8% (desert soil 118 OTUs; agricultural soil 290 OTUs), and rhizosphere sequences (6636 reads) were clustered into 400 OTUs (86–124 OTUs per sample). At a genetic dissimilarity level of 8%, the coverage of Chao1 estimated richness reached 61.1% and 56.9% for desert and agricultural soil, respectively (Table S2, Supporting Information). The calculated Shannon diversity index ( $H'$ ) was much lower for the desert soil ( $H'$  at a dissimilarity

cut-off of 8% = 1.87) than for the agricultural soil ( $H' = 3.92$ ) indicating a higher diazotrophic diversity due to the agricultural use of the desert. The coverage of the rhizosphere samples was between 78.9 and 42.0%, and diversity indices showed no statistically significant differences ( $p \leq 0.05$ ) between plants; Shannon values ranged from 3.26 to 3.92 at 8% dissimilarity (Table S2, Supporting Information).

Among quality amino acid sequences, 70.6% of soil reads and 68.1% of rhizosphere reads could be taxonomically assigned to at least class level (Fig. 2). The desert soil in particular exhibited an overwhelming dominance of NifH sequences related to *Alphaproteobacteria* (82.4%). Field soil revealed a high proportion of unclassified sequences, yet still contained 41.0% *Alphaproteobacteria*. In regards to phyla with greater than 1% of quality reads: 1.9% of field soil sequences could be affiliated to *Deltaproteobacteria*, 10.8% to *Bacilli*, 1.2% to *Clostridia*, 2.8% to *Spirochaetes* and 1.1% to *Cyanobacteria*. Rhizosphere samples also revealed a high abundance of *Alphaproteobacteria* (58.0%–15.4%). Additionally, *Betaproteobacteria* were found in all samples (55.7%–1.3%). Higher proportions of *Alphaproteobacteria* were found in the rhizospheres of the *Asteraceae* (*M. chamomilla* 55.2%–39.8% and *C. officinalis* 58.0%–42.1%) in comparison to *Betaproteobacteria* which were more dominant in the rhizosphere of *S. distichum* (55.7%–27.1%). *Gammaproteobacteria* were additionally found in the rhizosphere of *S. distichum* (19.7%–2.4%) and *M. chamomilla* ( $\leq 1.8\%$ ), yet *Deltaproteobacteria* were only identified in the *S. distichum* rhizosphere ( $\leq 2.2\%$ ). Among *Firmicutes*, *Bacilli* were found associated with *M. chamomilla* ( $\leq 17.2\%$ ), and *Clostridia* with *M. chamomilla* ( $\leq 1.6\%$ ) and *C. officinalis* ( $\leq 1.3\%$ ). *Cyanobacteria* were found in the rhizospheres of *M. chamomilla* ( $\leq 2.7\%$ ) and *C. officinalis* ( $\leq 1.8\%$ ).

Representative sequences of the dominant *alphaproteobacterial* NifH clusters in native desert soil showed 99%–100% similarity to the NifH sequences of the genus *Rhizobium* (Table S3, Supporting Information). Further, *Bradyrhizobium* and *Mesorhizobium* were also found. The diversity within *Alphaproteobacteria* was higher in the agriculturally used soil with 40.9% identified as *Rhizobium*, 12.9% as *Agrobacterium*, 38.2% as *Methylocystis*, 5.1% as *Bradyrhizobium* and 2.9% as *Methylocella*. Classifiable *Bacilli* in unplanted field soil were identified as *Paenibacillus*, and all cyanobacterial reads revealed the genus *Anabaena* as the closest hit. *Deltaproteobacteria*, *Clostridia* and *Spirochaetes* could not be identified at the genus level ( $< 95\%$  of sequence similarity). In all three investigated medicinal plant rhizospheres, *alphaproteobacterial* sequences of the genera *Rhizobium*, *Ensifer* and *Bradyrhizobium* were found, and *Agrobacterium* was identified in the rhizospheres of the *Asteraceae*. *Methylocystis* was found associated with roots of *C. officinalis* and *S. distichum*, and *Azospirillum* with *M. chamomilla* and *S. distichum*. Clusters of *Betaproteobacteria* found in all rhizospheres were identified as *Ideonella* and *Derxia*, and *Zoogloea* was found associated with both *Asteraceae*. In the rhizospheres of *C. officinalis* and *S. distichum*, nitrogen-fixing *Burkholderia* and *Azoarcus* were additionally identified. *Dechloromonas* was found in rhizospheres of *M. chamomilla* and *S. distichum*, and *Azospira* and *Azonexus* were only associated with the *S. distichum* root. Classifiable *Gammaproteobacteria* in the rhizospheres of *M. chamomilla* and *S. distichum* were affiliated with the genus *Azomonas*. All *deltaproteobacterial* reads found associated with *S. distichum* were classified in the genus *Geoalkalibacter*, and all classifiable *Bacilli* reads in the rhizosphere of *M. chamomilla* were identified as *Paenibacillus*.

In a phylogenetic tree distinguishing between the major NifH gene types, all NifH sequences from the soil sample libraries were affiliated with the canonical NifH clusters I and III

(Fig. 3). Conventional molybdenum nitrogenases (cluster I) were dominated by *Alphaproteobacteria* (closest related to *Rhizobium*, *Methylocella*, *Bradyrhizobium*, *Methylocystis*, *Mesorhizobium*, *Skermanella* and *Agrobacterium*), but also contained sequences from *Cyanobacteria* (*Anabaena*), *Actinobacteridae* (*Frankia*) and *Bacilli* (*Paenibacillus*). Reads affiliated with the conventional molybdenum nitrogenases from anaerobes (cluster III) were most closely related to *Spirochaetes* (*Treponema*), *Clostridia* (*Clostridium*, *Acetobacterium* and *Desulfosporosinus*) and *Deltaproteobacteria* (*Desulfovibrio*). No sequences of alternative nitrogenases (cluster II) and NifH paralogs (clusters IV and V) were found in the soil libraries.

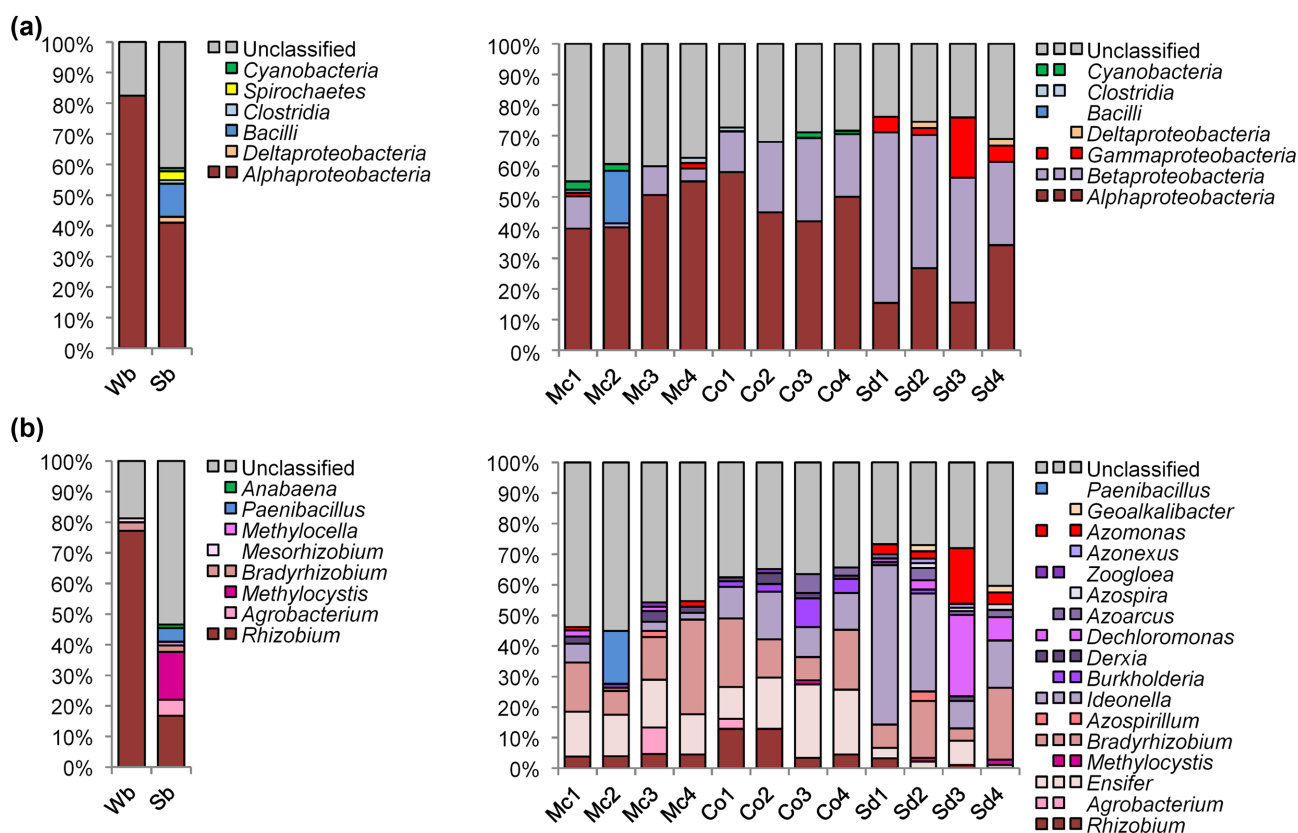
A profile clustering network analysis was applied to achieve better insight into the differences between the diazotrophic communities of the three medicinal plant rhizospheres (Fig. 4). OTUs equally distributed among all three rhizospheres were neglected in this network. The rhizosphere profiles revealed more similar diazotrophic communities between *M. chamomilla* and *C. officinalis* which were dominated by potential root nodule bacteria. NifH sequences of OTUs identified as genera *Ensifer*, *Rhizobium* and *Bradyrhizobium* were found in significantly higher abundances in the rhizospheres of *Asteraceae*. Conversely, the rhizosphere of *S. distichum* was colonized in greater numbers by nitrogen-fixing *Beta*-, *Gamma*- and *Deltaproteobacteria*. Significantly higher read counts were obtained for OTUs identified as *Ideonella*, *Dechloromonas*, *Azoarcus*, *Azospira* and *Azonexus*. For each medicinal plant, several specific OTUs were found within the nitrogen-fixing community.

### In situ visualization of bacterial rhizosphere colonization

Complementary FISH–CLSM analyses revealed generally strong rhizoplastic colonization. High abundances of *Alphaproteobacteria* and in particular the order *Rhizobiales* were observed in the root systems of medicinal plants grown under arid desert farming conditions (Fig. 5; S4, S5, Supporting Information). *Alphaproteobacteria* were, among the root-associated bacteria, clearly dominant over *Betaproteobacteria* and were found as both single cells and in large colonies in close interaction with other undefined bacteria (Fig. S4, Supporting Information). A high proportion of *Alphaproteobacteria* were subsequently identified as *Rhizobiales* (Fig. 5). As suggested in Erlacher et al. (2015), the combination of the FISH probes RHIZ1244 and RHIZ3r yielded into a robust coverage of most *Rhizobiales* including the predominant taxa *Rhizobiaceae* and *Bradyrhizobiaceae*. The tendency of *Rhizobiales* to preferentially form small sub-clusters consisting of three to six cells prevailed over the participation in bacterial plaques or biofilm like structures (Fig. 5). We observed both, packed and dense colonization on the rhizoplane and bacteria in the endorhiza. Further, *Rhizobiales* were found predominantly in niches of the rhizoplane and in compartments of the endorhiza.

## DISCUSSION

We observed a considerable shift in the diazotrophic soil community towards both higher abundance and diversity after long term organic desert agriculture, thus supporting our first hypothesis. The agricultural use of desert soil, especially through crop rotation with leguminous cover crops such as alfalfa or clover, enhances the presence and diversity of the nitrogen-fixing underground community. Nitrogen-fixing microorganisms in deserts play an indispensable role for both plant development and growth, yet desert soils are characterized by harsh environmental conditions, e.g. extreme temperatures,



**Figure 2.** Taxonomic classification of *NifH* sequences in bulk soils and associated with the rhizosphere of medicinal plants obtained by 454 amplicon sequencing. Wb = desert soil, Sb = agricultural soil, Mc = *M. chamomilla*, Co = *C. officinalis*, Sd = *S. distichum*. *NifH* amino acid sequences were classified at class (a) and genus (b) level. From each medicinal plant, four independent replicate samples were investigated separately. PCR products of soil replicates were pooled to one composite sample per soil type. Clusters containing less than 1% of quality sequences were not designated. Multi-colored charts at the legend are shown for each soil or rhizosphere type correspondingly.

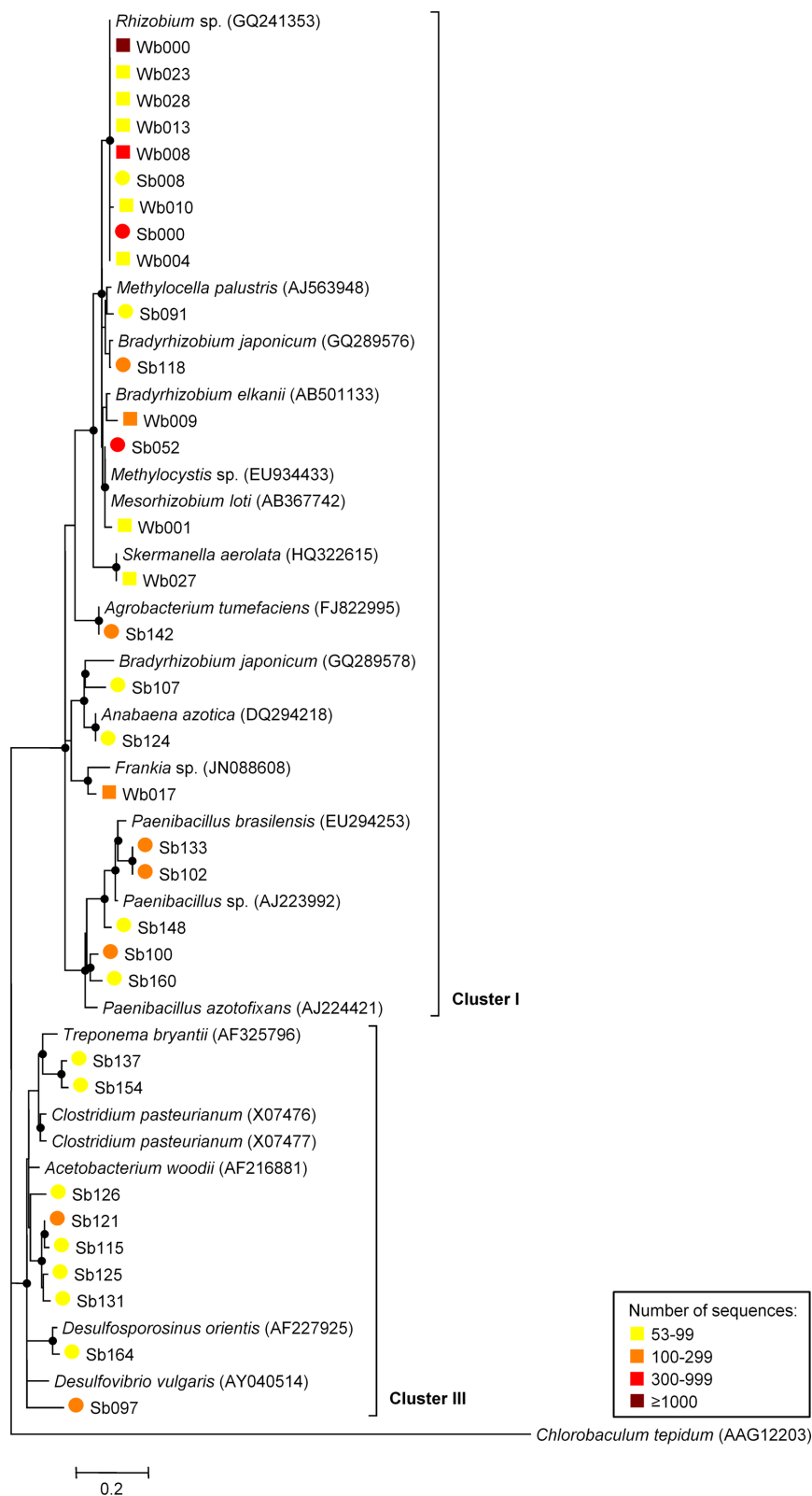
desiccation, high soil salinity, low nutrient levels, high UV radiation levels and physical instability caused by strong winds (Cary et al. 2010) which can all be transformed into a more manageable environment by watering and cultivating plants. Native desert soil, however, still showed an impressive diversity and relatively high abundance in comparison to other ecosystems. Contrary to previous studies that describe desert microbial communities as solely structured through abiotic processes (Cary et al. 2010), we additionally identified plants as important drivers for the functional gene pool diversity in arid soil ecosystems.

As stated in our second hypothesis, the high specificity for each plant species is in a functional gene. While specific structures of microbial communities were previously described (Berg and Smalla 2009), this specificity was confirmed for the structure of *Arabidopsis* cultivars using amplicon libraries (Bulgarelli et al. 2012). In this study, we found evidence of the specificity of the diazotrophic communities associated with the three plant species. In general, diazotrophic communities in the medicinal plant-associated microenvironments (rhizosphere and endorhiza) were more similar between the two *Asteraceae* in comparison to the *Solanum*, and the *nifH* gene profiles revealed a higher abundance of Alphaproteobacteria associated with the roots of the *Asteraceae*. Conversely, the nightshade showed a higher proportion of Betaproteobacteria. Similarly, previous investigations of the total bacterial and fungal communities already revealed comparable colonization patterns between *M. chamomilla* and *C. officinalis* in comparison to *S. distichum* (Köberl et al. 2013). Both *Asteraceae* are well-known medicinal plants that

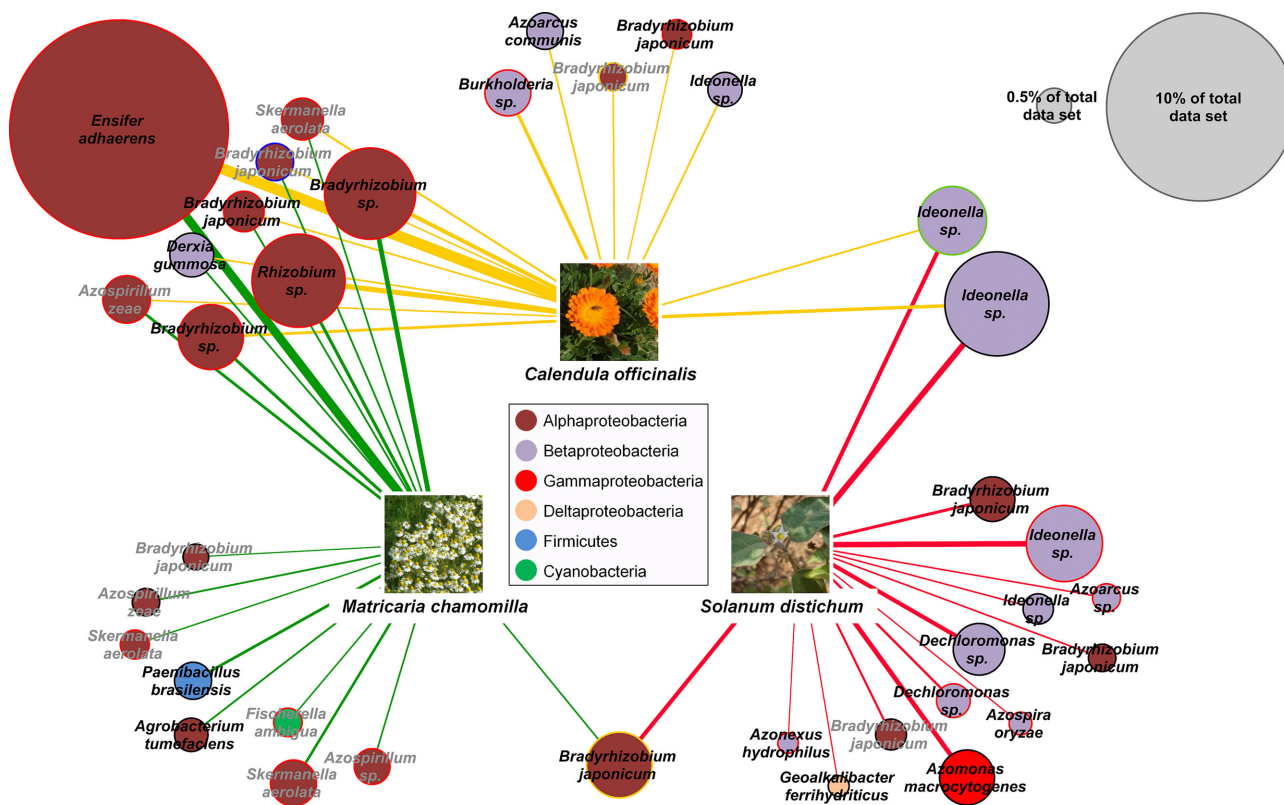
produce more similar bioactive metabolites, including several flavonoids, which could explain their similar microbiomes. The bioactive ingredients of the African *S. distichum* were all not yet identified (Bahgat et al. 2008). Furthermore, *M. chamomilla* and *C. officinalis* are annual herbal medicinal plants, while *Solanum distichum* is a perennial plant, thus providing a longer timeframe to specifically select a stable associated microbiome.

Nitrogen-fixing alphaproteobacterial genera were also largely represented in both soils where plants primarily acquire their associated microbial community (Berg and Smalla 2009). The question remains, however, as to where the Beta- and Gammaproteobacteria originated as they were identified neither in the desert nor in agriculturally conditioned bulk soil. Transmission through seeds or pollen would be possible, as recent studies on pumpkin flowers showed that the pollen grain surfaces are densely colonized by Beta- and Gammaproteobacteria (Fürnkranz et al. 2012). Even though plant seeds are well-known carriers of seed-borne pathogens, they can also transmit beneficial microorganisms (Hardoim et al. 2012). A very rare abundance of Beta- and Gammaproteobacteria within diazotrophic communities of bulk arid soils combined with a recruitment by root exudates and the favorable conditions of plant rhizospheres could explain this phenomenon as well.

In general, all microenvironments were primarily inhabited by proteobacterial nitrogen fixers, and the desert soil was noticeably dominated by Rhizobiales. Similar results were reported by López-Lozano et al. (2012) for soil from the Chihuahuan Desert in Mexico investigated using *nifH* gene clone libraries.



**Figure 3.** Phylogenetic composition of diazotrophic communities in desert (Wb, squares) and agricultural soil (Sb, circles). Each dataset comprised 5217 high-quality NifH sequences clustered at 8% dissimilarity. The neighbor-joining phylogenetic tree was constructed with both one representative sequence per each OTU and the closest database match (accession numbers in brackets). A partial sequence of the light-independent photochlorophyllide reductase subunit I (Bchl) from *C. tepidum* (AAG12203) was used as an outgroup. Reliability of the tree topology was evaluated using bootstrap analysis with 100 re-samplings (bootstrap values > 50% are indicated as black circles). Sequences were affiliated to the canonical *nifH* clusters I and III. Numbers of sequences in each cluster are indicated in a heatmap. OTUs containing less than 1% of the normalized dataset were not phylogenetically designated. The scale bar indicates 0.2 amino acid substitutions per site.



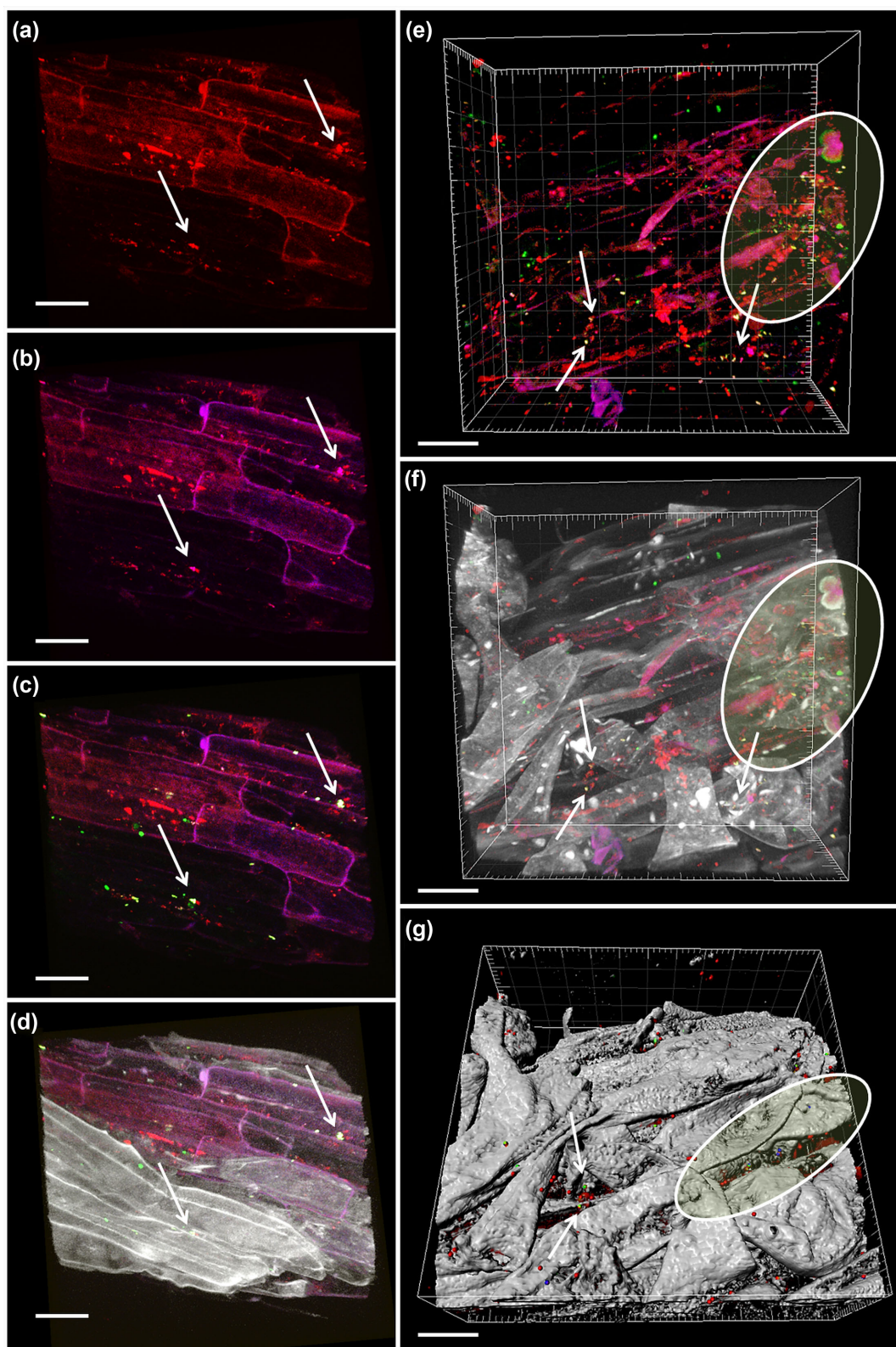
**Figure 4.** Profile clustering network analysis of *NifH* sequence libraries of rhizosphere samples from *M. chamomilla*, *C. officinalis* and *S. distichum* at a dissimilarity level of 8%. The abundance values for OTUs with a mean read change between plants of more than 1% of the normalized dataset were used. If the ratio of mean OTU read numbers exceeded 2, the OTUs were regarded as altered and assigned to the respective profile. Node sizes of OTUs correspond to the relative abundance of the total dataset; nodes matching abundances of 0.5% and 10% were added as reference points. Distributions between plants are displayed by widths of connection lines. Significances ( $p \leq 0.05$ ) are indicated by colored node borders: red node borders indicate significances between connected and all not linked profiles, green is used for significances between *Matricaria* and *Calendula*, orange for significances between *Calendula* and *Solanum*, blue for significances between *Matricaria* and *Solanum*, and nodes with black borders for no significant differences. Black node labels indicate a similarity to the taxonomic node label (closest database match) of  $\geq 95\%$ , whereas gray node labels have a similarity  $< 95\%$ .

However through the use of deep sequencing, we detected a much higher diversity: *NifH* sequences from soils and rhizosphere reads could be classified at a genetic dissimilarity level of 8% into 361 OTUs and 400 OTUs, respectively. Moreover, pyrosequencing techniques for *nifH* gene sequencing allow for the analysis of more sequences than those analyzed for the global study published a few years before (Gaby and Buckley 2011). The high *NifH* diversity primarily encompasses bacteria, as the only suggestion for archaeal nitrogen fixation in these unique desert habitats was found with *Methanocella* in the endorhiza, especially from *C. officinalis*. The *nifH* genes are commonly found in many methanogens, but not all methanogens are capable of nitrogen fixation. A complete *nif* operon that enables the organism to undergo nitrogen fixation was recently detected in the genome of *Methanocella conradii* HZ254 (found as closest database match in this study) (Lü and Lu 2012), however the genome of the closely related species *M. paludicola* SANAE only contains genes similar to *nifH* that are neither part of an operon with other *nif* genes nor associated with the nitrogen fixation function (Sakai et al. 2011). Through comparisons with the metagenomically reconstructed genome sequence of the Rice Cluster I archaeon RC-1<sub>MRE50</sub> for which a full component of the genes for nitrogenase was found (Erkel et al. 2006), Sakai et al. (2011) have already discussed an inter-species physiological difference between the nitrogen fixation capabilities among the members of the order *Methanocellales*.

With the same primer pair, we calculated much higher abundances of *nifH* genes in the rhizospheres of the investigated medicinal plants in Egypt than Hai et al. (2009) in the rhizosphere of *Sorghum bicolor* grown in Burkina Faso. Only a fraction of the medicinal plant-associated nitrogen fixers were able to invade the root, compete with other well-adapted root endophytes, and successfully colonize the inner tissue. Abundances calculated for endorhizas totaled 58%–71% of the appropriate rhizosphere, and the diversity of nitrogen-fixing microorganisms in the inner part of the root was noticeably lower. All habitats influenced by desert agriculture contained a higher amount of potential nitrogen fixers, whereby in particular the rotation with legume plants is a considerable source of rhizobia. The rhizobial life-cycle typically includes a nitrogen-fixing endosymbiosis within legume root-nodules and a free-living saprophytic persistence in soil; however, the detection of endosymbiotic life of rhizobia in non-legumes (Yanni et al. 2001; Chi et al. 2010) demonstrated that some rhizobia have evolved a three-component life-cycle including a beneficial plant growth-promoting endocolonization within non-legume roots when grown in rotation with leguminous hosts. As hypothesized, endophytic colonization by different rhizobial strains could also be shown for the investigated non-leguminous medicinal plant roots through *nifH*-specific fingerprints and *Rhizobiales*-specific FISH microscopy.

An immense diversity and high abundance of diazotrophic communities were detected in all investigated arid habitats,





**Figure 5.** In situ visualization of bacterial colonization in the root system of *M. chamomilla*. Volume renderings (a–f) and three-dimensional reconstruction model made by Imaris (g) of confocal laser scanning microscopy stacks. Micrographs a–d show the efficacy of the FISH-probes and potential endo- and ectophytic root colonization patterns of Rhizobiales (white arrows). Panels e–g show mixed bacterial taxa including Rhizobiales and other Alphaproteobacteria colonizing niches (white marks) and the inner compartments of the root. white/green (g) = Rhizobiales; pink/blue (g) = Alphaproteobacteria; red = all bacteria; gray = root tissue. Scale bars = 20 μm. Probe set: RHIZ1244 (Cy5), RHIZ3r (Cy5), ALF968 (Alexa488), EUB338-MIX (Cy3). The colors red, green, and blue were assigned to the fluorochromes Cy3, Cy5 and Alexa488, respectively.

thus strongly supporting their important role in native and agricultural desert ecosystems. The uniform distribution of dominant *Rhizobiales* across plant roots and the frequent occurrence in the endorhiza also contributes to their important role as symbiotic partners for their plant hosts.

## SUPPLEMENTARY DATA

Supplementary data are available at FEMSEC online.

## ACKNOWLEDGEMENTS

We would like to thank Ibrahim Abouleish, winner of the Alternative Nobel Prize, and his family for their generous hospitality in Sekem. We are grateful to Angela Hofmann (Cairo), Massimiliano Cardinale and Christin Zachow (Graz) for their valuable advice and support. Furthermore, we thank Kornelia Smalla (Braunschweig) for inspiring discussions and Meg Starcher (Washington/Graz) for critically reading the manuscript. The authors gratefully acknowledge support from NAWI Graz.

## FUNDING

This work was supported by the EU-Egypt Innovation Fund [RDI MED/2009/214-418 and ENPI/2014/342-707] and the Austrian Science Fund FWF [J 3638 to MK], co-funded by the European Commission.

**Conflict of interest.** None declared.

## REFERENCES

- Amann RI, Binder BJ, Olson RJ et al. Combination of 16S rRNA-targeted oligonucleotide probes with flow cytometry for analyzing mixed microbial populations. *Appl Environ Microb* 1990;**56**:1919–25.
- Bahgat A, Abdel-Aziz H, Raafat M et al. *Solanum indicum* ssp. *distichum* extract is effective against L-NAME-induced hypertension in rats. *Fundam Clin Pharm* 2008;**22**:693–9.
- Bais HP, Weir TL, Perry LG et al. The role of root exudates in rhizosphere interactions with plants and other organisms. *Annu Rev Plant Biol* 2006;**57**:233–66.
- Berg G, Smalla K. Plant species and soil type cooperatively shape the structure and function of microbial communities in the rhizosphere. *FEMS Microbiol Ecol* 2009;**68**:1–13.
- Bragina A, Berg C, Müller H et al. Insights into functional bacterial diversity and its effects on Alpine bog ecosystem functioning. *Sci Rep* 2013;**3**:1955.
- Bragina A, Maier S, Berg C et al. Similar diversity of *Alphaproteobacteria* and nitrogenase gene amplicons on two related *Sphagnum* mosses. *Front Microbiol* 2012;**2**:275.
- Bulgarelli D, Rott M, Schlaeppi K et al. Revealing structure and assembly cues for *Arabidopsis* root-inhabiting bacterial microbiota. *Nature* 2012;**488**:91–5.
- Cardinale M, Vieira de Castro J Jr, Müller H et al. *In situ* analysis of the bacterial community associated with the reindeer lichen *Cladonia arbuscula* reveals predominance of *Alphaproteobacteria*. *FEMS Microbiol Ecol* 2008;**66**:63–71.
- Cary SC, McDonald IR, Barrett JE et al. On the rocks: the microbiology of Antarctic Dry Valley soils. *Nat Rev Microbiol* 2010;**8**:129–38.
- Chao A, Bunge J. Estimating the number of species in a stochastic abundance model. *Biometrics* 2002;**58**:531–9.
- Chi F, Yang P, Han F et al. Proteomic analysis of rice seedlings infected by *Sinorhizobium meliloti* 1021. *Proteomics* 2010;**10**:1861–74.
- Daims H, Brühl A, Amann R et al. The domain-specific probe EUB338 is insufficient for the detection of all bacteria: development and evaluation of a more comprehensive probe set. *Syst Appl Microbiol* 1999;**22**:434–44.
- Erkel C, Kube M, Reinhardt R et al. Genome of rice cluster I archaea – the key methane producers in the rice rhizosphere. *Science* 2006;**313**:370–2.
- Erlacher A, Cernava T, Cardinale M et al. *Rhizobiales* as functional and endosymbiotic members in the lichen symbiosis of *Lobaria pulmonaria* L. *Front Microbiol* 2015;**6**:53.
- Farnelid H, Andersson AF, Bertilsson S et al. Nitrogenase gene amplicons from global marine surface waters are dominated by genes of non-cyanobacteria. *PLoS One* 2011;**6**:e19223.
- Farnelid H, Bentzon-Tilia M, Andersson AF et al. Active nitrogen-fixing heterotrophic bacteria at and below the chemocline of the central Baltic Sea. *ISME J* 2013;**7**:1413–23.
- Felsenstein J. PHYLIP – Phylogeny inference package (version 3.2). *Cladistics* 1989;**5**:164–6.
- Fish JA, Chai B, Wang Q et al. FunGene: the functional gene pipeline and repository. *Front Microbiol* 2013;**4**:291.
- Fürnkranz M, Lukesch B, Müller H et al. Microbial diversity inside pumpkins: microhabitat-specific communities display a high antagonistic potential against phytopathogens. *Microb Ecol* 2012;**63**:418–28.
- Gaby JC, Buckley DH. A global census of nitrogenase diversity. *Environ Microbiol* 2011;**13**:1790–9.
- Gaby JC, Buckley DH. A comprehensive evaluation of PCR primers to amplify the *nifH* gene of nitrogenase. *PLoS One* 2012;**7**:e42149.
- Hai B, Diallo NH, Sall S et al. Quantification of key genes steering the microbial nitrogen cycle in the rhizosphere of sorghum cultivars in tropical agroecosystems. *Appl Environ Microb* 2009;**75**:4993–5000.
- Hardoim PR, Hardoim CC, van Overbeek LS et al. Dynamics of seed-borne rice endophytes on early plant growth stages. *PLoS One* 2012;**7**:e30438.
- Köberl M, Müller H, Ramadan EM et al. Desert farming benefits from microbial potential in arid soils and promotes diversity and plant health. *PLoS One* 2011;**6**:e24452.
- Köberl M, Ramadan EM, Adam M et al. *Bacillus* and *Streptomyces* were selected as broad-spectrum antagonists against soil-borne pathogens from arid areas in Egypt. *FEMS Microbiol Lett* 2013;**342**:168–78.
- Kropf S, Heuer H, Gruning M et al. Significance test for comparing complex microbial community fingerprints using pairwise similarity measures. *J Microbiol Meth* 2004;**57**:187–95.
- Larkin MA, Blackshields G, Brown NP et al. ClustalW and ClustalX version 2.0. *Bioinformatics* 2007;**23**:2947–8.
- López-Lozano NE, Eguiarte LE, Bonilla-Rosso G et al. Bacterial communities and the nitrogen cycle in the gypsum soils of Cuatro Ciénegas Basin, Coahuila: a Mars analogue. *Astrobiology* 2012;**12**:699–709.
- Loy A, Maixner F, Wagner M et al. probeBase – an online resource for rRNA-targeted oligonucleotide probes: new features 2007. *Nucleic Acids Res* 2007;**35**:D800–4.
- Lü Z, Lu Y. Complete genome sequence of a thermophilic methanogen, *Methanocella conradii* HZ254, isolated from Chinese rice field soil. *J Bacteriol* 2012;**194**:2398–9.
- Luske B, van der Kamp J. Carbon sequestration potential of reclaimed desert soils in Egypt. Louis Bolk Instituut

- & Soil and More International. 2009, <http://orgprints.org/16438/1/2192.pdf>. (30 June 2015, date last accessed).
- McKay DL, Blumberg JB. A review of the bioactivity and potential health benefits of chamomile tea (*Matricaria recutita* L.). *Phytother Res* 2006;20:519–30.
- Manz W, Amann R, Ludwig W et al. Phylogenetic oligodeoxynucleotide probes for the major subclasses of proteobacteria: problems and solutions. *Syst Appl Microbiol* 1992;15:593–600.
- Oldroyd, GE. Speak, friend, and enter: signalling systems that promote beneficial symbiotic associations in plants. *Nat Rev Microbiol* 2013;11:252–63.
- Orr CH, James A, Leifert C et al. Diversity and activity of free-living nitrogen-fixing bacteria and total bacteria in organic and conventionally managed soils. *Appl Environ Microb* 2011;77:911–9.
- R Development Core Team. R: a language and environment for statistical computing. R Foundation for Statistical Computing. 2011, <http://www.r-project.org>. (30 June 2015, date last accessed).
- Raymond J, Siefert JL, Staples CR et al. The natural history of nitrogen fixation. *Mol Biol Evol* 2004;21:541–54.
- Rösch C, Mergel A, Bothe H. Biodiversity of denitrifying and dinitrogen-fixing bacteria in an acid forest soil. *Appl Environ Microb* 2002;68:3818–29.
- Sakai S, Takaki Y, Shimamura S et al. Genome sequence of a mesophilic hydrogenotrophic methanogen *Methanocella paludicola*, the first cultivated representative of the order *Methanocellales*. *PLoS One* 2011;6:e22898.
- Schwieger F, Tebbe CC. A new approach to utilize PCR-single-strand-conformation polymorphism for 16S rRNA gene-based microbial community analysis. *Appl Environ Microb* 1998;64:4870–6.
- Shannon CE. The mathematical theory of communication. 1963. *MD Comput* 1997;14:306–17.
- Smoot ME, Ono K, Ruscheinski J et al. Cytoscape 2.8: new features for data integration and network visualization. *Bioinformatics* 2011;27:431–2.
- Tamura K, Dudley J, Nei M et al. MEGA4: molecular evolutionary genetics analysis (MEGA) software version 4.0. *Mol Biol Evol* 2007;24:1596–9.
- Thayanukul P, Zang K, Janhom T et al. Concentration-dependent response of estrone-degrading bacterial community in activated sludge analyzed by microautoradiography-fluorescence in situ hybridization. *Water Res* 2010;44:4878–87.
- Ukiya M, Akihisa T, Yasukawa K et al. Anti-inflammatory, anti-tumor-promoting, and cytotoxic activities of constituents of marigold (*Calendula officinalis*) flowers. *J Nat Prod* 2006;69:1692–6.
- Wallner G, Amann R, Beisker W. Optimizing fluorescent in situ hybridization with rRNA-targeted oligonucleotide probes for flow cytometric identification of microorganisms. *Cytometry* 1993;14:136–43.
- Wang Q, 3rd Quensen JF, Fish JA et al. Ecological patterns of *nifH* genes in four terrestrial climatic zones explored with targeted metagenomics using FrameBot, a new informatics tool. *MBio* 2013;4:e00592–13.
- White JR, Nagarajan N, Pop M. Statistical methods for detecting differentially abundant features in clinical metagenomic samples. *PLoS Comput Biol* 2009;5:e1000352.
- Yang J, Kloepper JW, Ryu CM. Rhizosphere bacteria help plants tolerate abiotic stress. *Trends Plant Sci* 2009;14:1–4.
- Yanni YG, Rizk RY, Abd El-Fattah FK et al. The beneficial plant growth-promoting association of *Rhizobium leguminosarum* bv. *trifolii* with rice roots. *Aust J Plant Physiol* 2001;28:845–70.
- Yeager CM, Kornosky JL, Housman DC et al. Diazotrophic community structure and function in two successional stages of biological soil crusts from the Colorado Plateau and Chihuahuan Desert. *Appl Environ Microb* 2004;70:973–83.
- Yousuf B, Kumar R, Mishra A et al. Differential distribution and abundance of diazotrophic bacterial communities across different soil niches using a gene-targeted clone library approach. *FEMS Microbiol Lett* 2014;360:117–25.
- Zani S, Mellon MT, Collier JL et al. Expression of *nifH* genes in natural microbial assemblages in Lake George, New York, detected by reverse transcriptase PCR. *Appl Environ Microb* 2000;66:3119–24.
- Zehr JP, Jenkins BD, Short SM et al. Nitrogenase gene diversity and microbial community structure: a cross-system comparison. *Environ Microbiol* 2003;5:539–54.
- Zehr JP, McReynolds LA. Use of degenerate oligonucleotides for amplification of the *nifH* gene from the marine cyanobacterium *Trichodesmium thiebautii*. *Appl Environ Microb* 1989;55:2522–6.
- Zehr JP, Turner PJ. Nitrogen fixation: nitrogenase genes and gene expression. In: Paul JH (ed.). *Methods in Microbiology*. New York: Academic Press, 2001, 271–85.