

Research article

Open Access

## The genomic environment around the Aromatase gene: evolutionary insights

L Filipe C Castro\*<sup>1</sup>, Miguel M Santos<sup>1</sup> and Maria A Reis-Henriques<sup>1,2</sup>

Address: <sup>1</sup>CIIMAR – Centre of Marine and Environmental Research, Rua dos Bragas 289, 4050-123, Oporto, Portugal and <sup>2</sup>ICBAS – Institute of Biomedical Sciences Abel Salazar, Largo Professor Abel Salazar, 2, 4099-003, Oporto, Portugal

Email: L Filipe C Castro\* - filipe.castro@cimar.org; Miguel M Santos - santos@cimar.org; Maria A Reis-Henriques - mahenriq@icbas.up.pt

\* Corresponding author

Published: 12 August 2005

Received: 08 March 2005

BMC Evolutionary Biology 2005, 5:43 doi:10.1186/1471-2148-5-43

Accepted: 12 August 2005

This article is available from: <http://www.biomedcentral.com/1471-2148/5/43>

© 2005 Castro et al; licensee BioMed Central Ltd.

This is an Open Access article distributed under the terms of the Creative Commons Attribution License (<http://creativecommons.org/licenses/by/2.0>), which permits unrestricted use, distribution, and reproduction in any medium, provided the original work is properly cited.

### Abstract

**Background:** The cytochrome P450 aromatase (*CYP19*), catalyses the aromatisation of androgens to estrogens, a key mechanism in vertebrate reproductive physiology. A current evolutionary hypothesis suggests that *CYP19* gene arose at the origin of vertebrates, given that it has not been found outside this clade. The human *CYP19* gene is located in one of the proposed MHC-paralogue regions (HSA15q). At present it is unclear whether this genomic location is ancestral (which would suggest an invertebrate origin for *CYP19*) or derived (genomic location with no evolutionary meaning). The distinction between these possibilities should help to clarify the timing of the *CYP19* emergence and which *taxa* should be investigated.

**Results:** Here we determine the "genomic environment" around *CYP19* in three vertebrate species *Homo sapiens*, *Tetraodon nigroviridis* and *Xenopus tropicalis*. Paralogy studies and phylogenetic analysis of six gene families suggests that the *CYP19* gene region was structured through "en bloc" genomic duplication (as part of the MHC-paralogue formation). Four gene families have specifically duplicated in the vertebrate lineage. Moreover, the mapping location of the different paralogues is consistent with a model of "en bloc" duplication. Furthermore, we also determine that this region has retained the same gene content since the divergence of Actinopterygii and Tetrapods. A single inversion in gene order has taken place, probably in the mammalian lineage. Finally, we describe the first invertebrate *CYP19* sequence, from *Branchiostoma floridae*.

**Conclusion:** Contrary to previous suggestions, our data indicates an invertebrate origin for the aromatase gene, given the striking conservation pattern in both gene order and gene content, and the presence of aromatase in amphioxus. We propose that *CYP19* duplicated in the vertebrate lineage to yield four paralogues, followed by the subsequent loss of all but one gene in vertebrate evolution. Finally, we suggest that agnathans and lophotrochozoan protostomes should be investigated for the presence of aromatase.

### Background

The cytochrome P450 aromatase (*CYP19*) is a member of a large superfamily of enzymes named cytochrome P450, which are involved in many physiological functions, such

as steroid biosynthesis [1]. *CYP19* is a steroidogenic enzyme which catalyses the aromatisation of androgens to estrogens. Thus, aromatase activity is essential for maintaining a physiological balance between androgens

and estrogens, a critical aspect in the reproductive function of vertebrates; in humans, a P450 aromatase mutation leads to sterility [2]. For many other vertebrate groups, it has been demonstrated that *CYP19* plays a key role in sex differentiation [3].

While several CYP450 genes are universally distributed, *CYP19* is so far restricted to the vertebrate lineage. In mammals [4], birds [5], amphibians [6], reptiles [7] and cartilaginous fishes [8], a single gene has been isolated. In most Actinopterygii, however, two genes, *Cyp19a* and *Cyp19b*, encode two different transcripts expressed in the ovary and brain respectively [9]. Linkage data from zebrafish clearly suggests that these two genes are most likely the result of a genome duplication in the ray-finned bony fish lineage [9]. Despite intensive research, the ancestry of *CYP19* genes is yet to be deciphered. No orthologue has been described from fully sequenced invertebrate genomes, like *Drosophila melanogaster*, *Ciona intestinalis* or *Caenorhabditis elegans* [10]. Thus, it has been suggested that the *CYP19* gene arose at the origin of vertebrates [10,11]. Nevertheless, there is now strong evidence indicating that these model invertebrate species have experienced extensive gene loss [12]. Significantly, the estrogen receptor which was thought to have emerged in vertebrate ancestry, has now been documented in the lophotrochozoan protostome *Aplysia californica* [13].

Paralogy regions (or paralogons) consist of a series of linked genes (unrelated) on one chromosome, many of which have linked homologues (or paralogues) on at least another chromosome (typically four) [14,15]. Two main scenarios have been put forward to account for their presence: evolutionary remnants of chromosomal "en bloc" duplications or genome duplication, followed by gene loss and inversions [16,17]; or they reflect independent tandem duplications of each gene family followed by adaptive groupings of genes on different chromosomes [18]. The term "en bloc" duplication is used here in the context described by Abi-Rached et al. [17]. One of the best characterised examples of a paralogon includes the genes around the MHC complex on human chromosome 6, with homologues on chromosomes 1, 9, 5, 15 and 19 [19,20] (figure 1). Despite other views [18], the most recent findings indicate that an ancestral MHC-like region/chromosome duplicated "en bloc" twice in early vertebrate ancestry to yield a four-array paralogon (figure 1) [17,19-22]. Accordingly, vertebrate genes within these regions should have multiple copies (up to four) equally related to single invertebrate orthologues [23]. However, this is not the case for a substantial proportion of gene families. Gene loss, genomic rearrangements and insertions in both vertebrate and invertebrate genomes will obscure the correct evolutionary pattern of gene families within paralogons [23]. This is particularly evident for

gene families which are vertebrate single copy. If a vertebrate one-member gene family maps to a paralogon and no orthologue is found in invertebrate model species what should we conclude regarding the ancestry of such a gene family? The human *CYP19* gene follows this pattern. It maps to HSA15q, a region proposed to be part of the MHC-paralogon [20] (figure 1). This genomic location is highly suggestive for a invertebrate origin of *CYP19*. Nevertheless, since no paralogues are found in other chromosomal regions, it could well be the case of a genomic location with no evolutionary meaning.

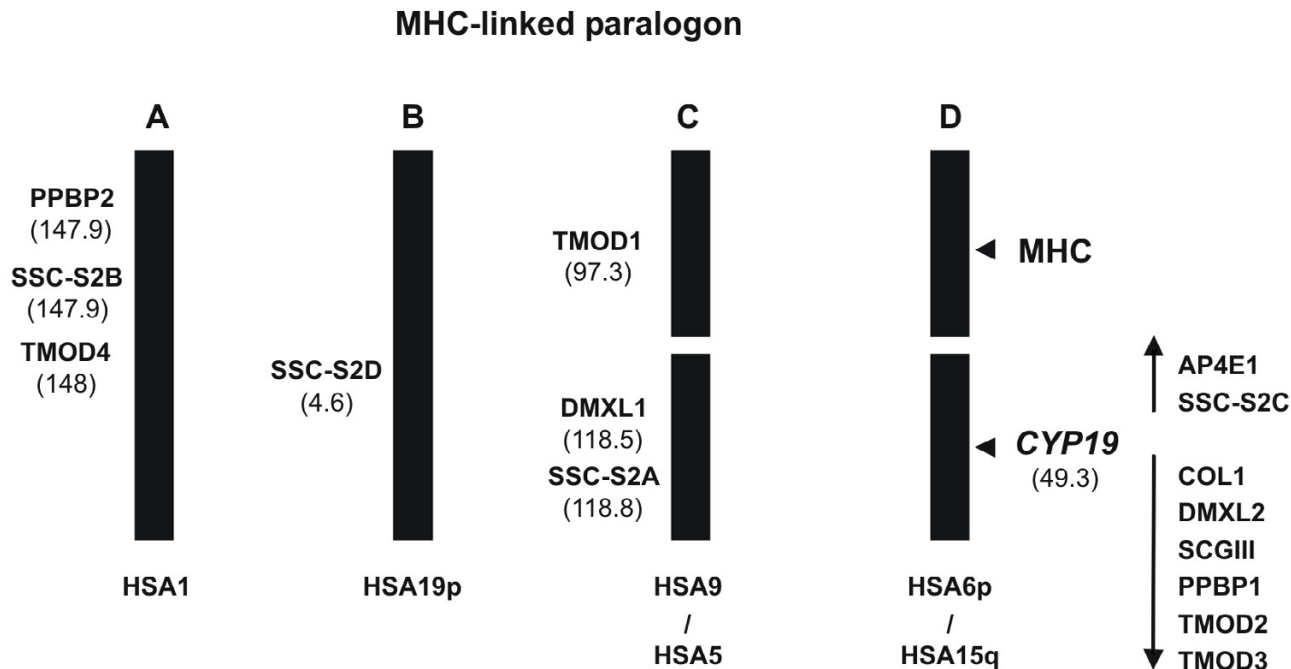
Phylogenetics, paralogy and comparative genomics can be a particularly powerful tool to address issues of gene ancestry. Here, we analysed the evolutionary history of the genes in close physical proximity to the aromatase gene(s) in several vertebrate species (*Homo sapiens*, *Tetraodon nigroviridis* and *Xenopus tropicalis*). Through phylogenetic analysis we demonstrate that the *CYP19* region was structured most likely by "en bloc" genomic duplication (as part of the MHC-paralogon). Most importantly, we also determine that this region has retained the same gene content and overall organisation (*CYP19* included) without any gene insertion in the three lineages. A single inversion of gene order has occurred in the mammalian clade. Finally, we describe for the first time an invertebrate *CYP19* partial sequence from *Branchiostoma floridae*. We propose that the aromatase gene family is much older than previously hinted.

## Results and discussion

In this study, we sequentially addressed three questions. First, we determined the duplication pattern (pre or post vertebrate radiation) of the gene families in close proximity to the human *CYP19*. A further test analysed the ancestry of the human aromatase genomic location (ancestral versus derived). Finally, we investigated the presence of *CYP19* in other invertebrate species (*B. floridae*), other than those previously explored.

### Phylogeny and paralogy

The human *CYP19* maps to one of the proposed MHC-paralogon regions (HSA15q) (figure 1) [20]. Despite this proposal, no phylogenetic analysis has been performed to confirm that gene families at HSA15q are part of the MHC-paralogon. This strategy aimed at defining the presence/absence of invertebrate orthologues and the duplication timings of the selected gene families (both these questions are key predictions of paralogy regions). Therefore, we undertook the task of analysing the "genomic environment" surrounding the *CYP19* human gene at HSA15q within a DNA sequence of 1.0 Mb (figure 2). Besides the *CYP19*, eight other ORFs are annotated within this DNA sequence, corresponding to the following genes: *AP4E1*, *FLJ41287*, *COL*, *DMXL2*, *SCGIII*, *MGC35274*,

**Figure 1**

The MHC-paralogon. Two sets of paralogy regions are intact (A and B) while the remaining 2 are broken (C and D) (adapted from [20]). The map location of the MHC, CYP19 and the surrounding genes (and paralogues) is shown. In parentheses the genomic distance in megabases to the p telomere.

*TMOD2*, and *TMOD3* (figure 2). This DNA module is outflanked by members of the Tropomodulin gene family, *TMOD2* and *TMOD3*, which have been proposed to support the vertebrate genome duplication hypothesis [20]. Other members of the *TMOD* gene family map to expected regions of MHC paralogy (figure 1). Furthermore, a single orthologue is found in invertebrate species (e.g. *D. melanogaster - sanpodo*).

We began by investigating the gene complement for each gene family in vertebrate and invertebrate species through BLAST search. Phylogenetic analysis was then performed when no previous study was available to determine duplication timings (if duplication had occurred).

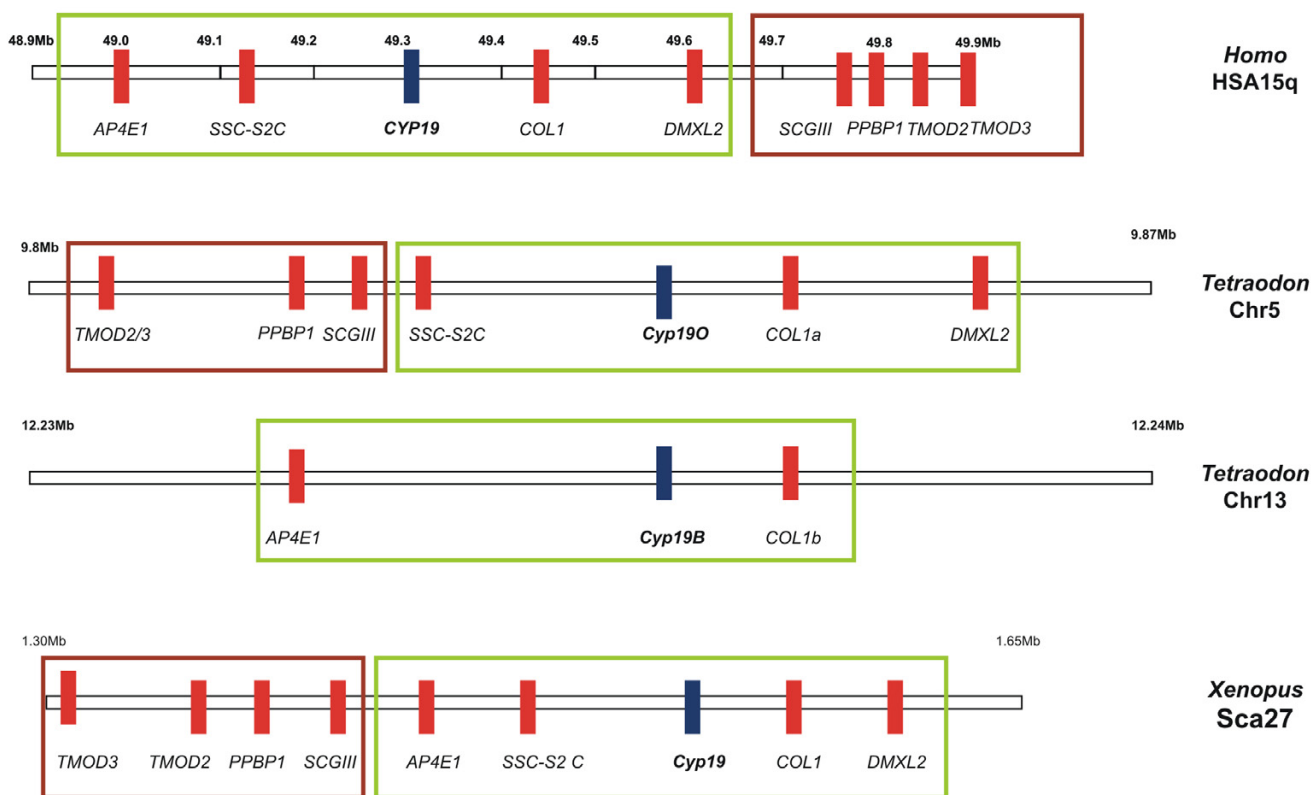
#### *AP4E1*

Adaptor protein complexes function as vesicle coat components in different membrane traffic pathways [24]. *AP4E1* is a recently described subunit of a 4<sup>th</sup> complex [24]. Up to the present day the *AP4E1* gene has been found solely in vertebrate genomes. Through BLAST search we have found the first invertebrate sequence in the *C. intestinalis* genome (scaffold 11). As shown in the phy-

logenetic tree, *CiAP4E1* is basal to the vertebrate genes with 1000 of bootstrap support (figure 3A). No further homologues were uncovered in vertebrate genomes.

#### *SSC-S2*

The ORF identified in Ensembl as NP\_997264 (FLJ41287 protein), presents significant sequence similarity to three other GenBank entries. One of those is a novel tumor necrosis factor- $\alpha$  inducible gene, *SSC-S2* [25], which maps to HSA5. *SSC-S2* contains a motif in the amino terminus that shows a significant similarity to death effector domain II of cell death regulatory protein, Fas-associated death domain-like interleukin-1 $\beta$ -converting enzyme-inhibitory protein (FLIP) [25]. Through phylogenetic analysis we showed these four sequences to be paralogues (figure 3B). The four genes were named as follows: *SSC-S2A* (HSA5), *SSC-S2B* (HSA1), *SSC-S2C* (HSA15) and *SSC-S2D* (HSA19). Invertebrate orthologues were found in *Anopheles gambiae*, *D. melanogaster*, *C. elegans* (not used in the phylogeny) and *C. intestinalis* (scaffold 92). The duplication events date to early vertebrate origin, as indicated by the branching pattern of the tree (figure 3B). The invertebrate sequences are basal to the vertebrate genes



**Figure 2**  
Physical maps of the genomic environment around *CYP19* in *Homo sapiens*, *Tetraodon nigroviridis* and *Xenopus tropicalis*.

with a significant bootstrap support (figure 3B). No homologue of SSC-S2A is found in Actinopterygii, possibly due to gene loss. Additionally, the human genes are all located in regions of MHC paralogy – HSA1, HSA19, HSA5 and HSA15 (figure 1), as expected from two rounds of "en bloc" duplication in early vertebrate ancestry. However, the tree branching pattern is not of the (A,B)(C,D) type, but sequential which is not in agreement with the "en bloc" scenario.

**COL**

The Ensembl annotation identifies this gene as Collomin. This has been renamed to Colmedin (*COL1*) [26]. Colmedin is a phylogenetically conserved type II transmembrane protein with collagen repeats and a cysteine-rich olfactomedin domain, with members described in *C. elegans* (two genes), *Drosophila* and vertebrates [26]. No orthologue was detected in *C. intestinalis*. Colmedin has been found to be a single-copy gene in several vertebrate species. BLAST search to *Danio* (not shown), *Fugu* and *Tetraodon* genomes uncovered a new Colmedin gene, which we name *COL1b* (figure 3C). *COL1b* is a specific paralogue of Actinopterygii. The genomic location of this new gene is

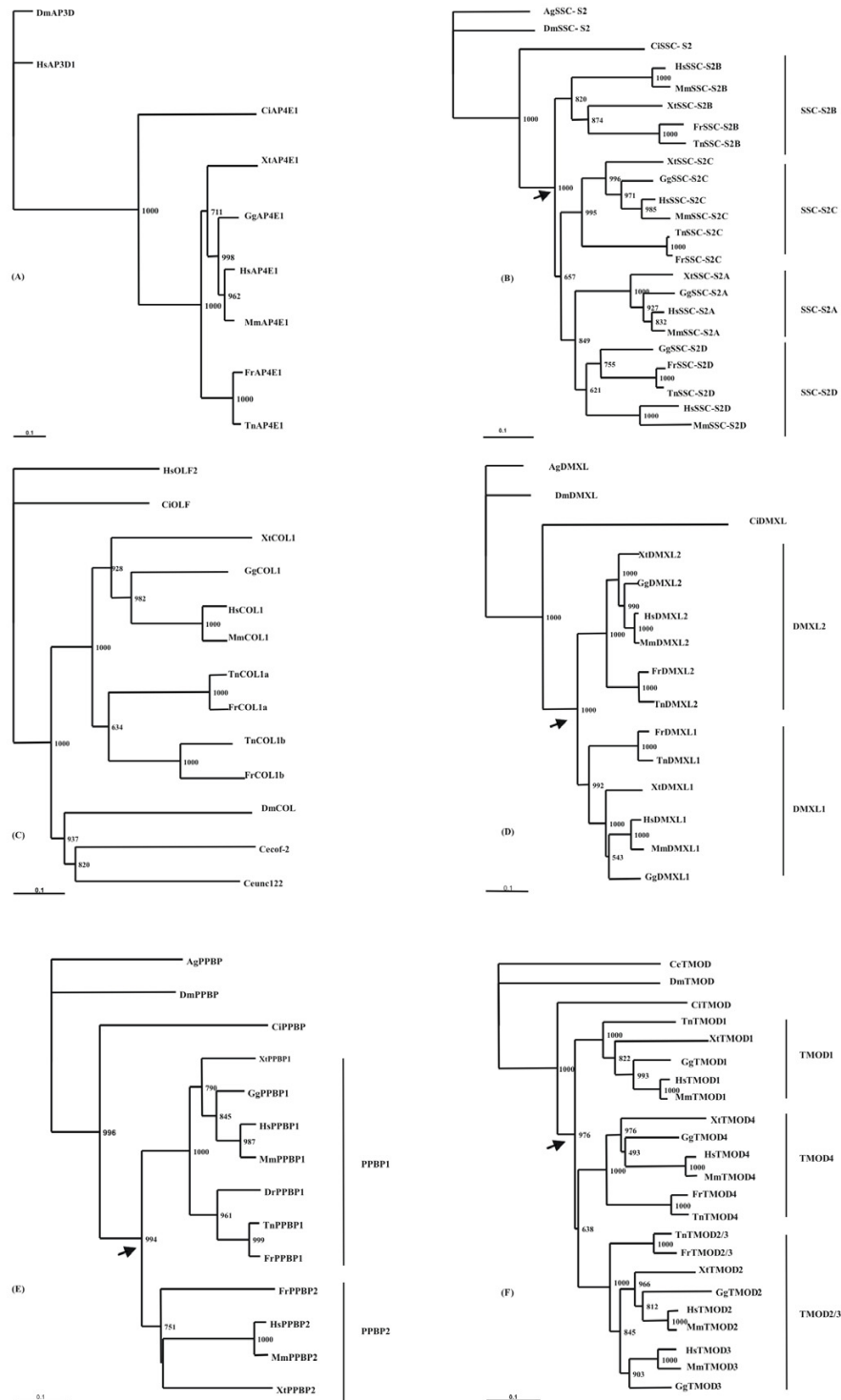
explained most likely by an extra genome duplication (see following section).

**DMXL**

*RAB-3* is a 12 WD domain protein which binds both GDP/GTP exchange protein and GTPase-activating protein for Rab3 small G protein family [27]. These domains are found in a variety of proteins and are likely to be involved in protein-protein interactions [28]. It shows a domain structure similar to that of *DMXL1* which has 10 WD domains, and has been renamed *DMXL2* [27,29]. Our phylogenetic analysis confirms that both genes are paralogues, with invertebrate sequences basal to vertebrate *DMXL1* and *DMXL2* (figure 3D). Moreover, *DMXL1* maps to an expected region of MHC-paralogue in HSA5 (figure 1). Thus, the duplication event which originated *DMXL2* and *DMXL1* resulted most likely from two rounds of "en bloc" duplications in early vertebrate ancestry.

**SCGIII**

Secretogranin III (*SCGIII*) is a member of the granin protein family, that is a component of intracellular dense core



**Figure 3**  
 Neighbor-joining phylogenetic trees from alignment of the putative protein sequences of AP4E1 (A), SSC-2S (B), COL (C), DMXL (D), PPBP (E) and TMOD (F). Figures at nodes are scores from 1000 bootstrap resamplings of the data. Arrow denotes duplication timing. Ag – *Anopheles gambiae*; Ce – *Caenorhabditis elegans*; Dm – *Drosophila melanogaster*; Ci – *Ciona intestinalis*; Hs – *Homo sapiens*; Mm – *Mus musculus*; Gg – *Gallus gallus*; Xt – *Xenopus tropicalis*; Fr – *Fugu rubripes*; Tn – *Tetraodon nigroviridis*.

vesicles. Through BLAST we found this gene family to be restricted to vertebrates (not shown).

#### NM\_699205-PPBP

The ORF identified in Ensembl as NM\_699205 codes for the hypothetical protein MGC35274. Sequence features (Lysin domain) indicate that it might be involved in cell wall catabolism. The *C. elegans* orthologue has been named Predicted peptidoglycan-binding protein (PPBP). Thus, we named the human gene *PPBP1*. A second PPBP gene can be found in vertebrate genomes, which we designate *PPBP2*. The phylogenetic tree indicates that both ORFs are paralogues (figure 3E). The second *PPBP* gene is present in *Fugu* (*Tetraodon* also has a second PPBP gene but due to the partial sequence was kept out of the phylogeny), amphibians and mammals. The tree pattern indicates that a duplication of an ancestral *PPBP* gene occurred specifically in the vertebrate lineage. Moreover, the second gene maps to an expected region of MHC paralogy in the human genome – HSA1.

#### TMOD2 and TMOD3

Popovici et al. [20] proposed that the TMOD gene family duplicated in the vertebrate lineage. However, no phylogenetic analysis was performed to support this assumption. In the human genome 4 tropomodulin genes have been annotated: *TMOD1* (Erythrocyte tropomodulin), *TMOD4* (Skeletal muscle tropomodulin), *TMOD2* (Neuronal tropomodulin) and *TMOD3* (Ubiquitous tropomodulin). In invertebrates a single tropomodulin gene is observed. The phylogenetic analysis by Almenar-Queralt et al. [30] suggests that *TMOD1*, 2 and 4 duplicated in the vertebrate lineage. Nevertheless, the origin of *TMOD3* is still unclear. The genomic location of both *TMOD2* and 3 is highly suggestive for a tandem duplication. Our phylogenetic analysis, supports this scenario (*TMOD2* and 3 are tandem duplicates from an ancestral *TMOD2/3* gene). The duplication event post-dates the divergence of fish and amphibians, since a single *TMOD2/3* is found in both *Fugu* and *Tetraodon* (figure 3F). On the contrary, *Xenopus*, chicken, mouse and human have two distinct genes (mapping side by side) (the *Xenopus TMOD3* orthologue has not been used in the phylogeny). Thus, we propose that a single tropomodulin gene existed in vertebrate ancestry. It duplicated to yield three TMOD genes (1, 2/3 and 4) as a result of "en bloc" duplication (probably as part of genome duplications). Later, a tandem duplication in the ancestor of *Xenopus*, chicken and mammals, originated the *TMOD2* and *TMOD3* genes.

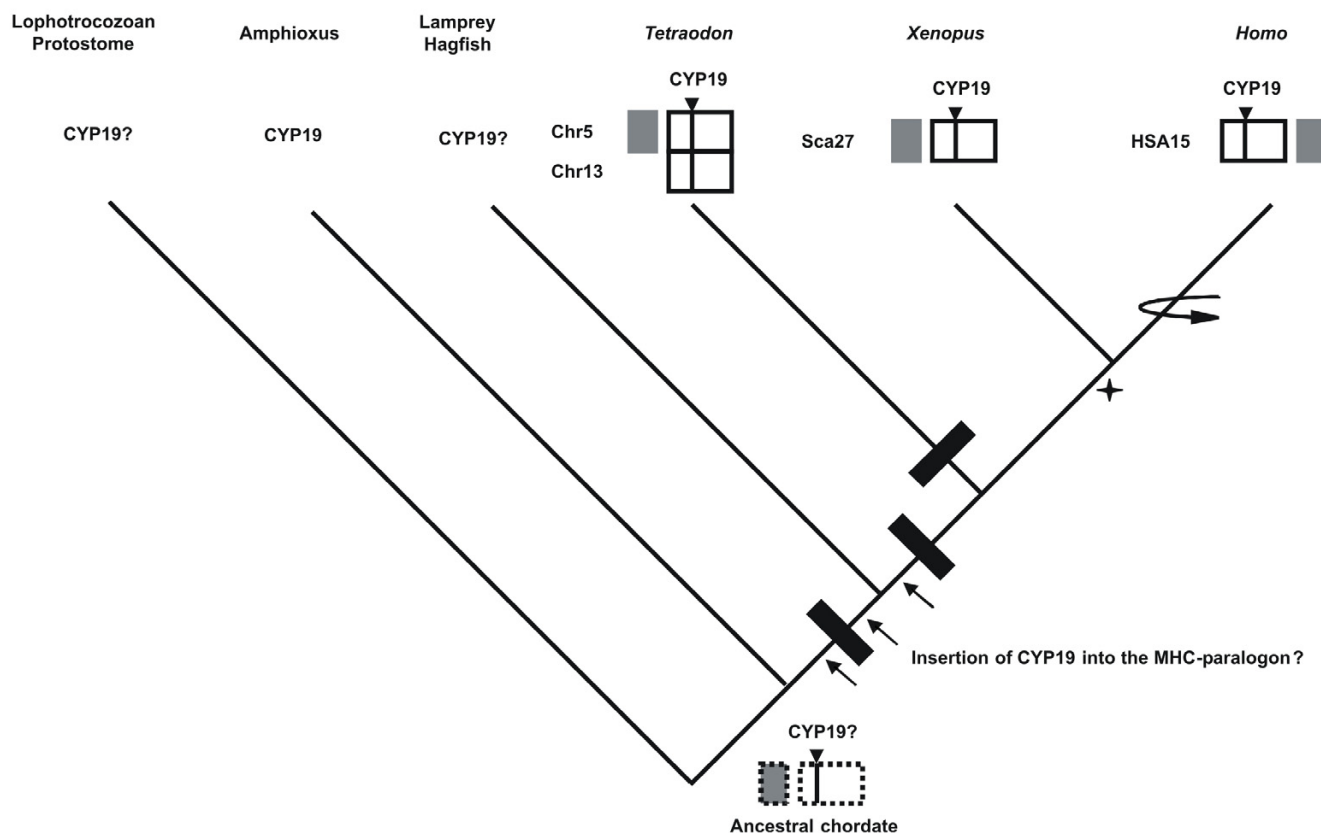
The phylogenetic analysis of the full set of gene families within the human aromatase DNA segment, reveals that four of those have specifically duplicated in the vertebrate lineage. Only the SSC-2S gene family shows four paralogues. The tree branching pattern is not of the (A,B)(C,D)

type (expected under an "en bloc" duplication) but sequential (expected under the adaptive duplication scenario). This observation has been interpreted as evidence against an "en bloc" scenario [31]. Thus, the phylogeny (branching patterns) *per se* does not support the "en bloc" duplications. In this context, the suggested duplicated regions could have resulted from a complex duplication, loss and rearrangement pattern, and not from "en bloc" duplications [18]. However, Furlong and Holland [23], have recently disputed this assumption.

Our analysis confirms the previous suggestion by Popovici et al. [20] that genes within HSA15q are part of the MHC-paralogue. We find that the paralogues for each gene family map to expected regions of MHC paralogy (figure 1). That is the case of *SSC-2S* (4 genes), *DMXL* (2 genes), *PPBP* (2 genes) and *TMOD* (3 genes). The physical proximity between these genes is also observed in other regions of paralogy besides HSA15. For example, paralogues *SSC-S2B*, *PPBP2* and *TMOD4* map closely in chromosome 1 (200 kb), while *DMXL1* and *SSC-S2A* are separated by just 300 kb in chromosome 5 (figure 1). Furthermore, of those genes which are found to be single copy in vertebrates, only for *CYP19* and *SCGIII* we have not found invertebrate orthologues (either in *C. intestinalis*, *C. elegans* or *D. melanogaster*).

#### Comparative genomics

Our phylogenetic analysis and paralogy study strongly suggests that the DNA segment harbouring the human aromatase gene resulted from an ancestral "en bloc" duplication of the MHC-paralogue. However, the question remains regarding the ancestry of human *CYP19* genomic location. It could well be case that the human *CYP19* location is of no relevant evolutionary meaning. In order to explore these possibilities, we compared the gene content and organisation around *CYP19* genes in three vertebrate species: *H. sapiens*, *T. nigroviridis* and *X. tropicalis* (figure 2). The comparison indicates a striking pattern of conservation in both gene content and gene order in the three species (figure 2). No gene insertion occurred since the divergence of these lineages. Two genomic events took place: genomic inversion and tandem gene duplication (*TMOD2*, *TMOD3*). The DNA module containing *TMOD3*, *TMOD2*, *PPBP1* and *SCGIII* is differently located in both fish/amphibian and humans (boxes figure 2). By comparing the gene order in the three clades it is possible to infer the ancestral configuration. Given that both *Tetraodon* and *Xenopus* have an identical gene order, it is more parsimonious to conclude that the *H. sapiens* configuration is derived (figure 4). The data indicates that prior to the divergence of these three lineages the aromatase gene was already at this precise location (figure 4). In the case of *Tetraodon*, this region has duplicated further onto chromosomes 5 and 13, originating *CYP19a* and *b*, most



**Figure 4**

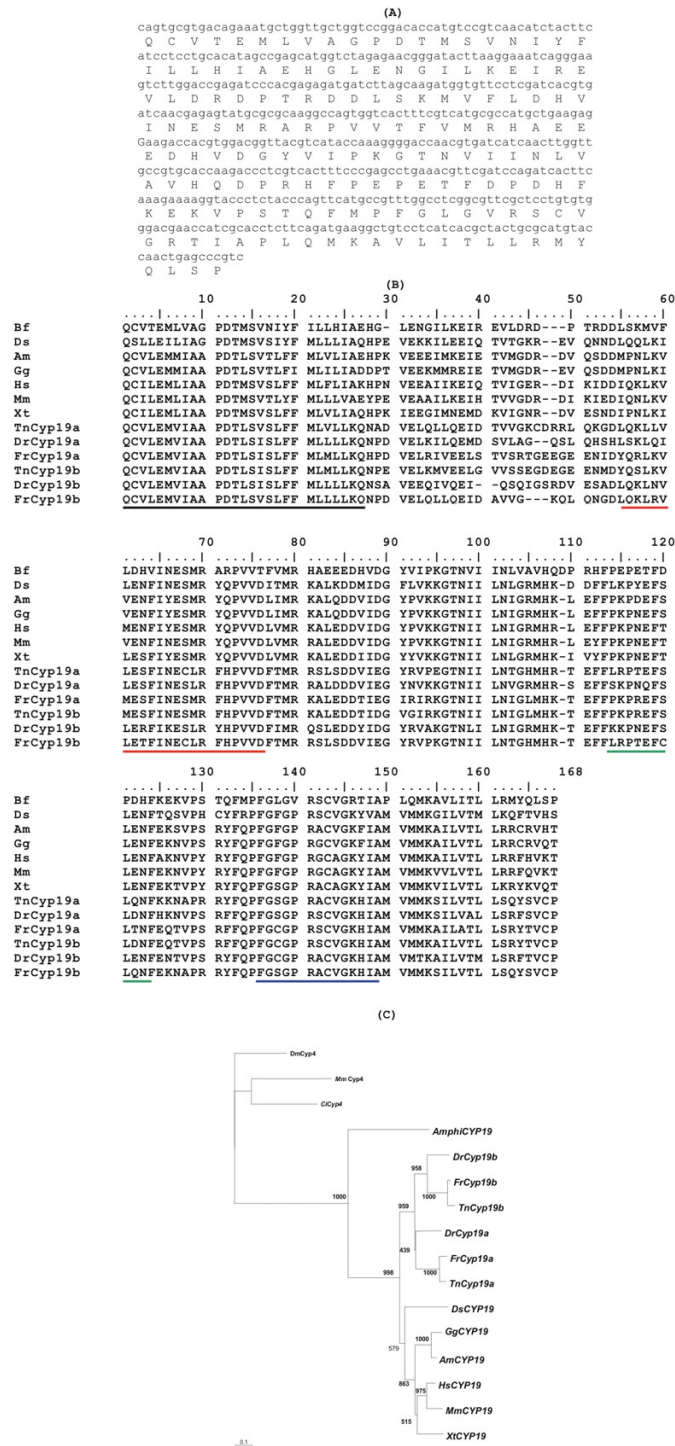
Evolutionary model for the origin of the aromatase gene family. ■ □ Symbols from the two conserved DNA blocks from figure 2. Dotted line boxes denote conservation of synteny but not gene order. Black bars denote "en bloc" (or genome) duplications. Star indicates tandem duplication of TMOD2/3. Horizontal curve arrow indicates gene inversion of the DNA block containing TMOD3, TMOD2, PPBP and SCGIII.

likely as the result of a further genome duplication on the teleost lineage (figure 4). Later in evolution, a genomic inversion has taken place in the human lineage (possible mammalian) (figure 4).

**CYP19 in amphioxus**

The phylogenetic analysis, paralogy study and the conservation of gene organisation around aromatase in three vertebrate species suggest that *CYP19* (and the immediate outliers) was present in the invertebrate unduplicated MHC-paralagon prior to vertebrate radiation. However, they do not rule out the possibility that *CYP19* emerged either just before or after the divergence of lamprey/hagfish and gnathostomes (being inserted into the MHC paralogy regions) (arrows-figure 4). The exact timing of the proposed two rounds of genome duplications which structure the vertebrate genome is still contentious. However, the consensus points to one duplication prior to the

divergence of lamprey/hagfish and gnathostomes, and the second after the divergence of these lineages [32] (figure 4). Furthermore, in the genome sequence of the sea squirt despite the evidence of an MHC unduplicated paralagon [33], no orthologue of aromatase has been found [10]. On the contrary, amphioxus has proved a more favourable model to address these issues [23]. In order to investigate the presence of *CYP19* in *B. floridae*, a BLAST search to the trace archives of the Whole Genome Sequence using the *CYP19* sequence from the stingray (*Dasyatis sabina*) was performed. A single hit with a significant *E*-value was retrieved. This information was subsequently used to isolate a partial sequence (494 bp) from DNA extracted from a cDNA 5–24 h embryo library. In figure 5A, we show the DNA sequence and the predicted amino acid translation. When run on BLAST, it clearly emerges that it belongs to the *CYP19* gene family. We designate this *AmphiCYP19*. Vertebrate aromatase genes display



**Figure 5**  
 Nucleotide and predicted amino acid sequence of the *AmphiCYP19* (partial sequence) (A); alignment of CYP19 sequences; dashes denote insertions; black line, I-helix region; red line, Ozol's peptide region; green line, Aromatic region and blue line, Heme binding region. Bf, *B. floridae*, Ds, *D. sabina*, Am, *Alligator mississippiensis*, Gg, *G. Gallus*, Hs, *H. sapiens*, Mm, *M. musculus*, Xt, *X. tropicalis*, Tn, *T. nigroviridis*, Dr, *D. rerio*, Fr, *Fugu rubripes* (B); Neighbor-joining phylogenetic tree from the alignment of the putative protein sequences of *CYP19* genes, figures at nodes are scores from 1000 bootstrap resamplings of the data ; an insertion of the *TnCYP19b* predicted protein sequence was kept out of the alignment (C).



typical putative structural domains. These include the I-helix region, Ozol's peptide region, Aromatic region and Heme-binding region [34] (figure 5B). The alignment provided in figure 5B indicates the presence of similar motifs in the *AmphiCYP19* sequence we now describe. The orthology of the retrieved sequence was determined through phylogeny. Overall, this analysis strongly indicates that *AmphiCYP19* is part of the aromatase evolutionary clade (bootstrap of 1000) (figure 5C). Our result suggests that a single *CYP19* gene was present at the base of the chordate lineage. We propose that it has been independently lost in the urochordate *C. intestinalis*. We argue that the ancestral invertebrate chordate *CYP19* gene underwent two rounds of "en bloc" duplication like many other gene families in the MHC-paralogue to yield four paralogues. Three of these have been lost. However, we cannot rule out that no *CYP19* duplications occurred in the vertebrate lineage, regardless of whether "en bloc" duplications occurred in other gene families. We favour the first scenario.

The present results imply a significant theoretical change regarding the ancestry of the *CYP19* gene family. This investigation started with the observation that the human aromatase gene maps to the MHC-paralogue. Nevertheless, two opposite scenarios could be drawn from the phylogenetic analysis, paralogy and comparative genomics. Either the *CYP19* locus was present in the invertebrate chordate unduplicated MHC-paralogue, and the presence of a single paralogue resulted from gene loss; or *CYP19* originated early on in vertebrate evolution in its present position in the MHC-paralogue (figure 4). We went on to test these hypotheses. Our results can be summarised as follows: (1) vertebrate *CYP19* containing regions are indeed part of the MHC-paralogue as demonstrated by the phylogenetic analysis of the gene families in close proximity; (2) comparative genomics of the aromatase region between fish, amphibians and humans shows a striking pattern of conservation without any gene insertion; (3) following the previous analysis, we found that *CYP19* is not restricted to the vertebrate clade, given the description of *AmphiCYP19*.

Our model determines the loss of three aromatase paralogues upon duplication of the ancestral MHC-paralogue. For the vast majority of paralogue regions it is difficult to precisely determine the amount of gene loss (due to the absence of large sets mapping data from crucial organisms). In the case of the MHC-paralogue an estimate can be calculated, given the previous work of several authors [17,21,35]. The sequencing and mapping data of the MHC anchor genes in amphioxus, shows a significant proportion of gene families which are single-copy in both lineages (seven out of eighteen, excluding the anchor genes and those of unknown orthology; e.g. frequenin-

like) [17,35]. Thus, the return to a single copy status following the "en bloc" duplication was not a rare event upon the duplication of the MHC-paralogue. At the moment we do not know whether *AmphiCYP19* maps along with the MHC anchor genes in a single chromosome, but this hypothesis can be tested in the future [36].

Finally, we speculate that the ancestry of *CYP19* genes could be more ancient than invertebrate chordate origin. Two reasons support this scenario. First, the sex steroid receptors (estrogens and androgens/progesterone/corticoids) are older than previously proposed [13]. The estrogen receptor found in *Aplysia* indicates that the duplication event from a sex steroid precursor receptor pre-dates the divergence of protostomes and deuterostomes [13]. Also, the phylogenetic analysis and paralogy studies of androgen, progesterone and corticoid receptors suggests that a single receptor was present in the ancestral Urbilateria [37]. Thus, the receptor gene kit for sex steroid hormones was already present in the primitive Bilateria (albeit not necessarily with a similar function). The second reason comes from Lophotrochozoan molluscs. These organisms respond to steroid hormones (e.g. estradiol) during their reproductive cycle [38]. Furthermore, biochemical analysis in mollusc tissue extracts reveals the presence of an aromatase-like activity [39,40]. In light of these findings and observations, we argue that the presence of *CYP19* should be investigated in lophotrochozoan protostomes (e.g. molluscs).

## Conclusion

We present here a detailed study of the genomic region containing the aromatase gene in three vertebrate lineages. The gene families found in close proximity to *CYP19* show a clear pattern of vertebrate specific duplication, as expected from a paralogue. A key prediction from paralogy regions is their unduplicated presence in pre-vertebrate genomes. Significantly, we have also found that the genomic organisation of the human *CYP19* genomic region mimics that of *Tetraodon* and *Xenopus*. Overall our analysis suggested the existence of aromatase in invertebrates. In agreement with this hypothesis we have found a *CYP19* orthologue in the invertebrate chordate amphioxus. Contrary to previous suggestions, our data implies that *CYP19* was present in the primitive chordate (and probably even earlier).

## Methods

### Phylogenetics and paralogy studies

The gene content around the *CYP19* human gene in chromosome 15 comprises eight open reading frames (ORFs) within a DNA sequence of 1.0 Mb (figure 2). These are annotated as follows: *AP4-E1* [GenBank: [NP\\_031373](#)], *FLJ41287* (SSC-2SC) [GenBank: [NP\\_997264](#)], *Collomin* [GenBank: [NP\\_861454](#)], *DMXL2* [GenBank:

**Table 1: Accession numbers for the genes used in the phylogenetic analysis.**

Gene family	Gene	Accession number	Species
<b>AP4E1</b>		<a href="#">NP_031373</a>	<i>H. sapiens</i>
		ENSMUSP00000002063	<i>Mus musculus</i>
		ENSGALP00000007610	<i>Gallus gallus</i>
		SINFRUP00000132389	<i>Fugu rubripes</i>
		GSTENG00025592001	<i>T. nigroviridis</i>
		ENSXETP00000044864	<i>X. tropicalis</i>
		ci0100133154 ( <b>scaffold 11</b> )	<i>C. intestinalis</i>
<b>SSC-S2</b>	CG4091	ENSANGP00000018260	<i>A. gambiae</i>
		<a href="#">AAF47048</a>	<i>D. melanogaster</i>
	<b>A</b>	ci0100140958 ( <b>scaffold 92</b> )	<i>C. intestinalis</i>
		<a href="#">NP_055165</a>	<i>H. sapiens</i>
		ENSMUSP00000034810	<i>M. musculus</i>
	<b>B</b>	ENSGALP00000007631	<i>G. gallus</i>
		ENSXETP00000044865	<i>X. tropicalis</i>
		<a href="#">NP_078851</a>	<i>H. sapiens</i>
		<a href="#">NP_081482</a>	<i>M. musculus</i>
		ENSXETP00000017843	<i>X. tropicalis</i>
	<b>C</b>	SINFRUP00000149825	<i>F. rubripes</i>
		GSTENT00011674001	<i>T. nigroviridis</i>
		<a href="#">NP_997264</a>	<i>H. sapiens</i>
		ENSMUSP00000034810	<i>M. musculus</i>
		ENSGALP00000007631	<i>G. gallus</i>
		ENSXETP00000044865	<i>X. tropicalis</i>
		SINFRUT00000165316	<i>F. rubripes</i>
	<b>D</b>	<b>annotated as pseudogene</b>	
		GSTENT00018057001	<i>T. nigroviridis</i>
		<a href="#">NP_689575</a>	<i>H. sapiens</i>
ENSMUSP00000076961		<i>M. musculus</i>	
ENSGALP00000006772		<i>G. gallus</i>	
SINFRUP00000156999		<i>F. rubripes</i>	
GSTENT00028868001		<i>T. nigroviridis</i>	
<a href="#">NP_573262</a>		<i>D. melanogaster</i>	
<b>Colmedin</b>	CG6867	<a href="#">AY494975</a>	<i>C. elegans</i>
	COF-2	<a href="#">AY494976</a>	<i>C. elegans</i>
	unc-122	<a href="#">NP_861454</a>	<i>H. sapiens</i>
	<b>COLI</b>	<a href="#">NP_796324</a>	<i>M. musculus</i>
		ENSGALP00000021668	<i>G. gallus</i>
	<b>COLIa</b>	ENSXETP00000044876	<i>X. tropicalis</i>
		SINFRUP00000165325	<i>F. rubripes</i>
	<b>COLIb</b>	GSTENG00018059001	<i>T. nigroviridis</i>
		SINFRUP00000132381	<i>F. rubripes</i>
	<b>DMXL</b>	DmX	GSTENT00025590001
<a href="#">XP_314464.1</a>			<i>A. gambiae</i>
<b>DMXL2</b>		<a href="#">NP_572302</a>	<i>D. melanogaster</i>
		<a href="#">CAB01916</a>	<i>C. elegans</i>
		ci0100136505 ( <b>scaffold 149</b> )	<i>C. intestinalis</i>
<b>DMXLI</b>		ENSGALP00000007662	<i>G. gallus</i>
		<a href="#">NP_056078.1</a>	<i>H. sapiens</i>
		<a href="#">XP_358382.2</a>	<i>M. musculus</i>
		GSTENG00018060001	<i>T. nigroviridis</i>
		SINFRUP00000166673	<i>F. rubripes</i>
		ENSXETP00000044880	<i>X. tropicalis</i>
		ENSGALP00000003481	<i>G. gallus</i>
<b>PPBP</b>	<b>PPBPI</b>	<a href="#">CAA06718</a>	<i>H. sapiens</i>
		ENSMUSP00000045559	<i>M. musculus</i>
		GSTENG00030946001	<i>T. nigroviridis</i>
		SINFRUP00000162769	<i>F. rubripes</i>
		ENSXETP00000038136	<i>X. tropicalis</i>
		<a href="#">NP_699205</a>	<i>H. sapiens</i>
		GSTENG00018055001	<i>T. nigroviridis</i>

**Table 1: Accession numbers for the genes used in the phylogenetic analysis. (Continued)**

		SINFRUP00000165314	<i>F. rubripes</i>
		ENSGALP00000007561	<i>G. gallus</i>
		<u>NP_081585</u>	<i>M. musculus</i>
	<b>PPBP2</b>	<u>CAI16380</u>	<i>H. sapiens</i>
		ENSMUSP00000067811	<i>M. musculus</i>
		ENSXETP00000017826	<i>X. tropicalis</i>
		SINFRUP00000149824	<i>F. rubripes</i>
		ENSXETP00000044860	<i>X. tropicalis</i>
		ci0100137161 ( <b>scaffold34</b> )	<i>C. intestinalis</i>
		<u>XP_321699</u>	<i>A. gambiae</i>
		<u>NP_650352</u>	<i>D. melanogaster</i>
		<u>AAL13319</u>	<i>C. elegans</i>
	<b>TMOD</b>	<u>AAC04506</u>	<i>D. melanogaster</i>
	<b>TMOD (spdo)</b>	ci0100140287 ( <b>scaffold487</b> )	<i>C. intestinalis</i>
	<b>TMOD</b>	<u>NP_003266</u>	<i>H. sapiens</i>
	<b>TMOD1</b>	<u>NP_068683</u>	<i>M. musculus</i>
		<u>NP_990105</u>	<i>G. gallus</i>
		ENSXETP00000022442	<i>X. tropicalis</i>
		GSTENG00033528001	<i>T. nigroviridis</i>
		SINFRUP00000157299	<i>F. rubripes</i>
	<b>TMOD2/3</b>	GSTENG00018054001	<i>T. nigroviridis</i>
		SINFRUP00000165312	<i>F. rubripes</i>
	<b>TMOD2</b>	<u>NP_055363</u>	<i>H. sapiens</i>
		<u>Q9JKK7</u>	<i>M. musculus</i>
		ENSGALP00000007536	<i>G. gallus</i>
		ENSXETP00000044853	<i>X. tropicalis</i>
	<b>TMOD3</b>	<u>NP_055362</u>	<i>H. sapiens</i>
		ENSMUSP00000072087	<i>M. musculus</i>
		ENSGALP00000007492	<i>G. gallus</i>
		ENSXETP00000044845	<i>X. tropicalis</i>
	<b>TMOD4</b>	<u>NP_037485</u>	<i>H. sapiens</i>
		<u>NP_057921</u>	<i>M. musculus</i>
		<u>NP_990105</u>	<i>G. gallus</i>
		SINFRUP00000149822	<i>F. rubripes</i>
		GSTENG00011677001	<i>T. nigroviridis</i>
		ENSXETP00000044853	<i>X. tropicalis</i>
		<u>NP_112503</u>	<i>H. sapiens</i>
			<i>B. floridae</i>
			<i>D. sabina</i>
		<u>AAF04617</u>	<i>Alligator mississippiensis</i>
		<u>AAK31803</u>	<i>G. gallus</i>
		<u>NP_001001761</u>	<i>M. musculus</i>
		<u>P28649</u>	<i>M. musculus</i>
		ENSXETP00000044866	<i>X. tropicalis</i>
	<b>Cyp19a</b>	GSTENP00025591001	<i>T. nigroviridis</i>
	<b>Cyp19b</b>	GSTENP00018058001	<i>T. nigroviridis</i>
	<b>Cyp19a</b>	<u>NP_571229</u>	<i>D. rerio</i>
	<b>Cyp19b</b>	<u>NP_571717</u>	<i>D. rerio</i>
	<b>Cyp19a</b>	SINFRUP00000132385	<i>F. rubripes</i>
	<b>Cyp19b</b>	SINFRUP00000165318	<i>F. rubripes</i>
<b>Others</b>	<b>AP3D</b>	<u>AAC14585</u>	<i>D. melanogaster</i>
	<b>AP3D1</b>	<u>NP_003929</u>	<i>H. sapiens</i>
	<b>OLFM2</b>	ENSP00000264833	<i>H. sapiens</i>
	<b>CiOLF</b>	ci0100131069( <b>scaffold4</b> )	<i>C. intestinalis</i>
	<b>Cyp4d2</b>	<u>Z23005</u>	<i>D. melanogaster</i>
	<b>CYP4</b>	ENSMUSP00000003574	<i>M. musculus</i>
	<b>CYP4</b>	ci0100146084 ( <b>scaffold15</b> )	<i>C. intestinalis</i>

[NP\\_056078](#)], *SCGIII* [GenBank: [NP\\_037375](#)], *MGC35274* [GenBank: [NP\\_699205](#)], *TMOD2* [GenBank: [NP\\_055363](#)], and *TMOD3* [GenBank: [NP\\_055362](#)] (figure 2). In order to find invertebrate orthologues and vertebrate paralogues, protein sequence from each gene was extracted and used for BLAST search (TBLASTN) against GenBank and Ensembl. Accession numbers for each gene are given in table 1.

Putative protein sequences for each gene family were aligned using the CLUSTAL X program (version 1.8). The produced alignments were further edited by eye to maximise the homologous regions (conserved domains) (given upon request). The phylogenetic reconstruction was based on conserved domains. If no domains were identified, reconstruction's were performed using the full-length alignment (without taking into account gaps or ambiguous sites). The phylogenetic trees were constructed using neighbor-joining from the CLUSTAL X program, on an amino acid distance matrix calculated with the Dayoff PAM option. Confidence on each node was assessed by 1000 bootstrap replicates. Trees were visualised with the Treeview program (version 1.6.6).

Mapping data was retrieved from *H. sapiens* [41], *T. nigroviridis* [42], *X. tropicalis* [43] and *C. intestinalis* [44].

#### Polymerase chain reaction (PCR)

A BLAST search to the *B. floridae* trace archives of the Whole Genome Sequence using the DNA sequence from the stingray (*D. sabina*) *CYP19* was done. Clone AFS830540 presented a significant *E*-value (data not shown). Clone walk 5' and 3' allowed the determination of further regions of *CYP19* homology. To obtain a *CYP19* sequence fragment an hemi-nested PCR approach was followed using DNA purified from an 5–24 h embryo cDNA library (J. Langeland, Kalamazoo, USA). Three oligonucleotides (2 forward and 1 reverse) were designed in conserved regions using the available genomic sequence: *CYPF1* 5' CTGGCTAACATCCGGGACAT 3'; *CYPF2* 5' CAGTGCCTGACAGAAATGCT 3'; and *CYPR1* 5' GACGGCTCAGTTGGTACAT 3'. PCR was carried out in 50 µl reaction mixture consisting of 10 mM Tris-HCl, pH 8.0, 1.5 mM MgCl<sub>2</sub>, KCl 50 mM, TritonX 0.1%, 10 µM of each primer, 2 mM each of dATP, dCTP, dGTP, and dTTP, 1U DNA polymerase (Appligene Oncor). The first round of PCR (oligonucleotides *CYPF1* and *CYPR1*) had the following profile: initial cycle of denaturation, 94 °C 2 min, and forty amplification cycles with denaturation at 94 °C for 45 s, annealing at 55 °C for 30 s, and extension at 72 °C for 1 min. An hemi-nested PCR was carried out afterwards using the first PCR product as a sample. A similar PCR profile was used with the exception of the extension time – 45 s (oligonucleotides *CYPF2* and *CYPR1*). The PCR product was separated through 2% agarose gel and puri-

fied by using the QIAquick Gel Extraction kit (QIAGEN, Germany). The product was directly sequenced in both strands using the PCR oligonucleotides by STAB VIDA (Portugal). The sequence was deposited in Genbank [DQ085624](#).

#### Authors' contributions

LFCC performed all sequence and phylogenetic analysis, comparative genomics, laboratory experiments and drafted the manuscript, MMS participated in phylogenetic analysis, design and co-ordination of the study, and MARH participated in the co-ordination of the study.

#### Acknowledgements

This study was supported by the project PDCTM/MAR/15284/99 from the Fundação para a Ciência e a Tecnologia, Portugal. LFCC is funded by the Fundação para a Ciência e a Tecnologia, Portugal (BPD/19608/2004). We acknowledge Daniel Rokhsar and the Department of Energy Joint Genome Institute for the unpublished shotgun data of the amphioxus genome project, and the Holland lab, University of Oxford, UK for the amphioxus cDNA. We acknowledge also three anonymous referees for their suggestions and comments.

#### References

- Hall PF: **Cytochromes P-450 and the regulation of steroid synthesis.** *Steroids* 1986, **48**:131-96.
- Morishima A, Grumbach MM, Simpson ER, Fisher C, Qin K: **Aromatase deficiency in male and female siblings caused by a novel mutation and the physiological role of estrogens.** *J Clin Endocrinol Metab* 1995, **80**:3689-98.
- Carreau S, Bourguiba S, Lambard S, Galeraud-Denis I, Genissel C, Levallet J: **Reproductive system: aromatase and estrogens.** *Mol Cell Endocrinol* 2002, **193**:137-43.
- Simpson ER, Michael MD, Agarwal VR, Hinshelwood MM, Bullun SE, Zhao Y: **Expression of the CYP19 (aromatase) gene: an unusual case of alternative promoter usage.** *FASEB J* 1997, **11**:29-36.
- McPhaul MJ, Noble JF, Simpson ER, Mendelson CR, Wilson JD: **The expression of a functional cDNA encoding the chicken cytochrome P-450arom (aromatase) that catalyzes the formation of estrogen from androgen.** *J Biol Chem* 1988, **263**:16358-63.
- Miyashita K, Shimizu N, Osanai S, Miyata S: **Sequence analysis and expression of the P450 aromatase and estrogen receptor genes in the Xenopus ovary.** *J Steroid Biochem Mol Biol* 2000, **75**:101-7.
- Gabriel WN, Blumberg B, Sutton S, Place AR, Lance VA: **Alligator aromatase cDNA sequence and its expression in embryos at male and female incubation temperatures.** *J Exp Zoo* 2001, **290**:439-48.
- Ijiri S, Berard C, Trant JM: **Characterization of gonadal and extra-gonadal forms of the cDNA encoding the Atlantic stingray (*Dasyatis sabina*) cytochrome P450 aromatase (CYP19).** *Mol Cell Endocrinol* 2000, **164**:169-81.
- Chiang EF-L, Yan Y-L, Guiguen Y, Postlethwait J, Chung B-C: **Two Cyp19 (P450 Aromatase) genes on duplicated zebrafish chromosomes are expressed in ovary and brain.** *Mol Biol Evol* 2001, **18**:542-50.
- Baker ME: **Co-evolution of steroidogenic and steroid-inactivating enzymes and adrenal and sex steroid receptors.** *Mol Cell Endocrinol* 2004, **215**:55-62.
- Nelson DR: **Metazoan cytochrome P450 evolution.** *Comp Biochem Physiol C Pharmacol Toxicol Endocrinol* 1998, **121**:15-22.
- Kortschak RD, Samuel G, Saint R, Miller DJ: **EST analysis of the cnidarian *Acropora millepora* reveals extensive gene loss and rapid sequence divergence in the model invertebrates.** *Curr Biol* 2003, **13**:2190-5.

13. Thornton JW, Need E, Crews D: **Resurrecting the ancestral steroid receptor: ancient origin of estrogen signalling.** *Science* 2003, **301**:1714-17.
14. Coulier F, Popovici C, Villet R, Birnbaum D: **MetaHox gene clusters.** *J Exp Zool* 2000, **288**:345-51.
15. Popovici C, Leveugle M, Birnbaum D, Coulier F: **Homeobox gene clusters and the human paralogy map.** *FEBS Lett* 2001, **491**:237-42.
16. Lundin LG: **Evolution of the vertebrate genome as reflected in paralogous chromosomal regions in man and the house mouse.** *Genomics* 1993, **16**:1-19.
17. Abi-Rached L, Gilles A, Shiina T, Pontarotti P, Inoko H: **Evidence of en bloc duplication in vertebrate genomes.** *Nat Genet* 2002, **31**:100-5.
18. Hughes AL: **Phylogenetic tests of the hypothesis of block duplication of homologous genes on human chromosomes 6, 9, and 1.** *Mol Biol Evol* 1998, **15**:854-70.
19. Kasahara M: **The chromosomal duplication model of the major of the major histocompatibility complex.** *Immunol Rev* 1999, **167**:17-32.
20. Popovici C, Leveugle M, Birnbaum D, Coulier F: **Coparalogy: physical and functional clusterings in the human genome.** *Biochem Biophys Res Commun* 2001, **288**:362-70.
21. Castro LFC, Furlong R, Holland PWH: **An antecedent of the MHC-linked genomic region in amphioxus.** *Immunogenetics* 2004, **55**:782-4.
22. Danchin EG, Pontarotti P: **Towards the reconstruction of the bilaterian ancestral pre-MHC region.** *Trends Genet.* 2004, **20**:587-91.
23. Furlong R, Holland PWH: **Were vertebrates octoploid?** *Phil Trans R Soc Lond B Biol Sci* 2002, **357**:531-44.
24. Hirst J, Bright NA, Rous B, Robinson MS: **Characterization of a fourth adaptor-related protein complex.** *Mol Biol Cell* 1999, **10**:2787-802.
25. Kumar D, Whiteside TL, Kasid U: **Identification of a novel tumor necrosis factor- $\alpha$ -inducible gene, SCC-S2, containing the consensus sequence of a death effector domain of fas-associated death domain-like interleukin-1 $\beta$ -converting enzyme-inhibitory protein.** *J Biol Chem* 2000, **275**:2973-8.
26. Loria PM, Hodgkin J, Hobert O: **A conserved postsynaptic transmembrane protein affecting neuromuscular signaling in *Caenorhabditis elegans*.** *The Journal of Neuroscience* 2004, **24**:2191-201.
27. Nagano F, Kawabe H, Nakanishi H, Shinohara M, Deguchi-Tawarada M, Takeuchi M, Sasaki T, Takai Y: **Rabconnectin-3, a novel protein that binds both GDP/GTP exchange protein and GTPase-activating protein for Rab3 small G protein family.** *J Bio Chem* 2002, **277**:9629-32.
28. Neer EJ, Schmidt CJ, Nambudripad R, Smith TF: **The ancient regulatory-protein family of WD-repeat proteins.** *Nature* 1994, **371**:297-300.
29. Kraemer C, Enklaar T, Zabel B, Schmidt ER: **Mapping and structure of DMXLI, a human homologue of DmX gene from *Drosophila melanogaster* coding for a WD repeat protein.** *Genomics* 2000, **64**:97-101.
30. Almenar-Queralt A, Lee A, Conley CA, Ribas de Pouplana L, Fowler VM: **Identification of a novel tropomodulin isoform, skeletal tropomodulin, that caps actin filament pointed ends in fast skeletal muscle.** *J Biol Chem* 1999, **274**:28466-75.
31. Hughes AL: **Phylogenies of developmentally important proteins do not support the hypothesis of two rounds of genome duplication early in vertebrate history.** *J Mol Evol* 1999, **48**:565-76.
32. Escriva H, Manzon L, Youson J, Laudet V: **Analysis of lamprey and hagfish genes reveals a complex history of gene duplications during early vertebrate evolution.** *Mol Biol Evol* 2002, **19**:1440-50.
33. Azumi K, De Santis R, De Tomaso A, Rigoutsos I, Yoshizaki F, Pinto MR, Marino R, Shida K, Ikeda M, Arai M, Inoue Y, Shimizu T, Satoh N, Rokhsar DS, Du Pasquier L, Kasahara M, Satake M, Nonaka M: **Genomic analysis of immunity in a Urochordate and the emergence of the vertebrate immune system: "waiting for Godot".** *Immunogenetics* 2003, **55**:570-81.
34. Graham-Lorence S, Amarneh B, White RE, Peterson JA, Simpson ER: **A three-dimensional model of aromatase cytochrome P450.** *Protein Sci* 1995, **4**:1065-80.
35. Vienne A, Shiina T, Abi-Rached L, Danchin E, Vitiello V, Cartault F, Inoko H, Pontarotti P: **Evolution of the proto-MHC ancestral region: more evidence for the plesiomorphic organisation of human chromosome 9q34 region.** *Immunogenetics* 2003, **55**:429-36.
36. Castro LFC, Holland PWH: **Fluorescent in situ hybridisation to amphioxus chromosomes.** *Zoolog Sci* 2002, **19**:1349-53.
37. Bertrand S, Brunet FG, Escriva H, Parmentier G, Laudet V, Robinson-Rechavi M: **Evolutionary genomics of nuclear receptors: from twenty-five ancestral genes to derived endocrine systems.** *Mol Biol Evol* 2004, **21**:1923-37.
38. Di Cosmo A, Di Cristo C, Paolucci M: **Sex steroid hormone fluctuations and morphological changes of the reproductive system of the female of *Octopus vulgaris* throughout the annual cycle.** *J Exp Zool* 2001, **289**:33-47.
39. Le Curieux-Belfond O, Moslemi S, Mathieu M, Seralini GE: **Androgen metabolism in oyster *Crassostrea gigas*: evidence for 17 $\beta$ -HSD activities and characterization of an aromatase-like activity inhibited by pharmacological compounds and a marine pollutant.** *J Steroid Biochem Mol Biol* 2001, **78**:359-66.
40. Santos MM, ten Hallers-Tjabbes CC, Vieira N, Boon JP, Porte C: **Cytochrome P450 differences in normal and imposex-affected female whelk *Buccinum undatum* from the open North Sea.** *Mar Environ Res* 2002, **54**:661-5.
41. **Homo sapiens Genome** [[http://www.ensembl.org/Homo\\_sapiens/](http://www.ensembl.org/Homo_sapiens/)]
42. **Tetraodon Genome Browser** [<http://www.genoscope.cns.fr/externe/tetranew/data/assembly>]
43. **Xenopus tropicalis Genome** [[http://www.ensembl.org/Xenopus\\_tropicalis/](http://www.ensembl.org/Xenopus_tropicalis/)]
44. **Ciona intestinalis Genome** [<http://genome.jgi-psf.org/ciona4/ciona4.home.html>]

Publish with **BioMed Central** and every scientist can read your work free of charge

"BioMed Central will be the most significant development for disseminating the results of biomedical research in our lifetime."

Sir Paul Nurse, Cancer Research UK

Your research papers will be:

- available free of charge to the entire biomedical community
- peer reviewed and published immediately upon acceptance
- cited in PubMed and archived on PubMed Central
- yours — you keep the copyright

Submit your manuscript here:  
[http://www.biomedcentral.com/info/publishing\\_adv.asp](http://www.biomedcentral.com/info/publishing_adv.asp)

