



Volatile profiling in *Rhus coriaria* fruit (sumac) from three different geographical origins and upon roasting as analyzed via solid-phase microextraction

Mohamed A. Farag^{1,2}, Nesrin M. Fayek¹ and Ibrahim Abu Reidah³

¹Pharmacognosy Department, College of Pharmacy, Cairo University, Cairo, Egypt

²Department of Chemistry, American University in Cairo, New Cairo, Egypt

³Department of Chemistry, An-Najah National University, Nablus, Palestine

ABSTRACT

Rhus coriaria (sumac) is a fruit grown worldwide for its culinary use as a flavoring agent and for its health benefits. Despite several studies on *R. coriaria* non-volatile metabolites, much less is recognized concerning volatile composition within that genus. In an effort to expand on flavor profile sumac and its food products, we report on volatile profiling from three accessions of different origins including Palestine, Jordan and Egypt in addition to its cold tea and post roasting via headspace solid-phase microextraction (SPME). Under optimized conditions, 74 volatile components were identified belonging to alcohols, aromatics, esters, ethers, furan/aldehyde, hydrocarbons, ketones, monoterpenes, oxides and sesquiterpene hydrocarbons. Major identified components included α -pinene, naphthalene and o-cymene in Palestinian, Jordanian and Egyptian sumac, respectively. Whereas sesquiterpenes amounted for the major volatile class in fresh *R. coriaria* at ca. 40–58%, furan/aldehydes were the predominant classes in roasted fruits (58%). Volatile abundance data was further subjected to multivariate data analyses revealing furfural and nonanal enrichment in roasted compared to fresh fruits and their cold tea preparation. Seeds exhibited no aroma components which justified their removal in *R. coriaria* prior to its use as a food flavor. Such knowledge is expected to be the key for understanding the olfactory and taste properties of *R. coriaria* and its several food products.

Submitted 21 March 2018

Accepted 7 June 2018

Published 4 July 2018

Corresponding author

Mohamed A. Farag,
mohamed.alifarag@aucegypt.edu

Academic editor

Carlos Conte-Junior

Additional Information and
Declarations can be found on
page 12

DOI 10.7717/peerj.5121

© Copyright
2018 Farag et al.

Distributed under
Creative Commons CC-BY 4.0

OPEN ACCESS

Subjects Agricultural Science, Food Science and Technology

Keywords Roasting, Principal component analysis, *Rhus coriaria*, Solid phase microextraction (SPME), Anacardiaceae

INTRODUCTION

Rhus coriaria L., (Family Anacardiaceae) is commonly known as sumac (Peter, 2012). Sumac's name is derived from 'sumaga', which simply means red in the Syrian language (Shabbir, 2012). Sumac has been traditionally used in many Middle Eastern and Mediterranean countries as a spice, dying agent, and medicinal herb (Reidel et al., 2017). It is widely used as a condiment in Turkey and Iran to enhance the taste of poultry and vegetable dishes (Ravindran, Pillai & Divakaran, 2012). In Arab countries, sumac is mixed with sesame seeds, salt and thyme in the popular spice mixture called *za'atar* (or *dukkah*).

With regards to its cosmetic use, oils, phytopigments, and proteins derived from the sumac fruit were used in hair care products as anti-dandruff agents, hair colors, and hair cleaning agents, respectively (Gupta et al., 2010). Additionally, antioxidants from the sumac fruit were applied to stabilize sunflower oil (Rayne & Mazza, 2007). In terms of its folk medicinal use, sumac is reported for treating diarrhea and dermatological problems in addition to reducing blood glucose, uric acid and cholesterol levels (Candan, 2003; Mamedov, Gardner & Craker, 2005; Mozaffarian, 2013). With regards to its health benefits, *R. coriaria* also exerts a myriad of biological effects such as antimicrobial, antiviral, antioxidant, anti-inflammatory, anticancer, hepatoprotective, antihypertensive and cardiovascular protection (Bozan et al., 2003; El Hasasna et al., 2015; Pourahmad et al., 2010; Rayne & Mazza, 2007). Bioactive agents reported in *R. coriaria* (Abu-Reidah, Jamous & Ali-Shtayeh, 2014) include organic acids, fatty acids, essential and non-essential amino acids, vitamins (B₁, B₂, B₆, B₁₂, C, PP), carbohydrates (xylose and glucose), minerals (K, Ca, Mg, Na, P, Fe), tannins, phenolic acids, anthocyanins, flavonoids and terpenoids (Abu-Reidah et al., 2015; Demchik et al., 2015; Kossah et al., 2010; Kossah et al., 2009). Although *R. coriaria* is not recognized as an aromatic plant, its fruit is enriched in essential oil composed of monoterpenes and/or sesquiterpenes (Bahar & Altug, 2009; Giovanelli et al., 2017; Morshedloo et al., 2017). Main aroma compounds include nonanal, limonene, 2-decenal, p-anisaldehyde (Giovanelli et al., 2017; Kurucu et al., 1993), (E)-caryophyllene (Bahar & Altug, 2009; Brunke et al., 1993; Gharaei et al., 2013) and the diterpene cembrene (Gharaei et al., 2013; Giovanelli et al., 2017). Volatile composition in plants is known to be affected by various factors such as geographical origin, harvesting time, processing and agricultural practices (Morshedloo et al., 2015). Previous studies have revealed differences in sumac volatile composition as affected by its origin i.e., Turkey, Italy and Iran. Nevertheless, no report has been made on assessing to what extent roasting could affect its aroma profile.

The main objectives of this study were: (1) to assess volatile composition of sumac fruit from different Middle Eastern origins viz. Egypt, Jordan and Palestine using headspace SPME, (2) to assess roasting impact on its aroma profile and (3) to determine sumac cold tea true aroma profile. Volatile abundance data were extracted from chromatograms without prior peak identification in an untargeted manner. Considering the complexity of acquired data, unsupervised and supervised multivariate data analyses viz. principal component analysis (PCA) and orthogonal partial least squares (OPLS), respectively, were employed for classification of fruit samples, and to ensure good analytical rigorousness. To the best of our knowledge, this study provides the first volatile characterization in *R. coriaria* from the Middle Eastern region and report of the impact of roasting on the fruit aroma.

MATERIALS AND METHODS

Plant material

R. coriaria fruits were collected manually in the full ripe stage from wild trees grown in Nablus, Palestine in October 2016, and were authenticated by Prof. Dr. Ibrahim Abou Reidah, Department of Chemistry, An-Najah National University, Nablus, Palestine. Commercial samples of *R. coriaria* fruits in the full ripe stage were purchased from El

Hen Herbal Company (Amman, Jordan) and Haraz Drugstore (Cairo, Egypt). Voucher specimens were kept at the Department of Pharmacognosy, Faculty of Pharmacy, Cairo University, Egypt. Cold tea of the Palestinian sample was prepared by percolating 10 g of fresh cut fruits (without seeds) in 100 mL distilled water for 10 min, kept at 25 °C, then filtered on Whatman filter paper to remove plant debris. Roasting of the Palestinian sample was carried out by heating fresh cut fruits (without seeds) in an oven set at 120 °C for 20 min. Three replicates were analyzed for each sample. The fruits were stored at –20 °C till further analysis.

Chemicals and materials

SPME fibers of stableflex coated with divinylbenzene/carboxen/polydimethylsiloxane (DVB/CAR/PDMS, 50/30 μm) (57328-U) or PDMS (polydimethylsiloxane) (57302) were purchased by Supelco (Oakville, ON, Canada). All other chemicals and standards were purchased from Sigma Aldrich (St. Louis, MO, USA).

Volatile analysis of fresh and roasted fruits

The HS-SPME volatile analysis was carried out as stated previously ([Farag et al., 2017](#)). Fruits (100 mg) were cut into halves, placed in SPME screw cap vials (1.5 ml) and spiked with (*Z*)-3-hexenyl acetate dissolved in water at a final concentration of 2 μg per vial. The SPME fiber was inserted manually into a vial containing seeds placed in an oven kept at 50 °C for 30 min. The fiber was subsequently withdrawn into the needle and then injected into the injection port of the gas chromatography-mass spectrometer (GC-MS). GC-MS analysis was performed on a Shimadzu GC-17A gas chromatogram (Shimadzu, Tokyo, Japan) equipped with DB-5 column (30 m × 0.25 mm i.d. × 0.25 μm film thickness; Supelco) and coupled to a Shimadzu QP5050A mass spectrometer. The interface and the injector temperatures were both set at 220 °C. The following gradient temperature program was used for volatile analysis. The oven temperature was kept first at 40 °C for 3 min, then increased to 180 °C at a rate of 12 °C min⁻¹, kept at 180 °C for 5 min, and finally ramped up at a rate of 40 °C min⁻¹ to 240 °C and kept at this temperature for 5 min. The carrier gas helium was used at a total flow rate of 0.9 mL/min. Splitless injection mode was used for analysis considering the lower levels of volatiles in samples. SPME fiber was prepared for the next analysis by placing it in the injection port for 2 min at 220 °C to ensure complete elution of volatiles. Blank runs were made during sample analyses. The HP quadrupole mass spectrometer was operated in EI mode at 70 eV. A scan range was set at *m/z* 40–500.

GC-MS data processing and multivariate analysis

Volatile components were identified by comparing their retention indices (RI) relative to n-alkanes (C₆–C₂₀), mass matching to NIST, Wiley Library Database and with standards whenever available. Peaks were first deconvoluted using AMDIS software (<http://www.amdis.net/>) prior to mass spectral matching. Volatile abundance data were prepared for multivariate data analysis by extraction using MET-IDEA software ([Broeckling et al., 2006](#)) for data extraction. Data were then subjected to principal component analysis (PCA), partial least squares-discriminant analysis (OPLS-DA) using SIMCA-P version

13.0 software package (Umetrics, Umea, Sweden). Markers were subsequently identified by analyzing the S-plot, which was declared with covariance (p) and correlation (pcor). All variables were mean centered and scaled to Pareto variance.

RESULTS

Volatile analysis of fresh *R. coriaria* fruit (sumac) from three different geographical origins

GC-MS analysis (Tables 1 & 2, Fig. 1) of sumac fruits led to the identification of 74 volatile constituents, categorized in 10 different classes viz. alcohols, aromatics, esters, ethers, furan/aldehydes, hydrocarbons, ketones, monoterpene hydrocarbons, oxide and sesquiterpene hydrocarbons. A typical chromatogram of fresh and roasted sumac fruit aroma profiles is represented in Fig. 1. Initial detection of volatiles started from 0 minutes during chromatographic run but considering that no volatile peaks were detected until 5 min and with only one major peak for acetic acid (Fig. S1), MS detection started from 5 min for all specimens. Considering our interest in volatile terpenoids and hydrocarbons, 5 minutes delay is appropriate for this study. Acetic acid in sumac is likely to derive the tart taste for its fruit. Sesquiterpene hydrocarbons amounted for the most dominant class accounting for ca. 40–58% of the fresh sumac aroma with a total of 26 identified volatile constituents (Table 2). Next to sesquiterpenes, monoterpene hydrocarbons represented the most abundant class (ca. 17–34%) among specimens (Table 2). Other eight volatile classes detected amounted for less than 17% of sumac fruit total volatile blend (Table 2). Naphthalene and α -pinene were the major volatile forms in Jordanian and Palestinian specimens at ca. 15.8 and 16.7%, respectively. Whereas, monoterpene hydrocarbons viz., o-cymene 7.7%, β -ocimene 7.5% and limonene 7.3% were the chief components in fresh sumac fruit aroma derived from Egypt. Volatiles found at comparable levels in all three examined specimens included (*E*)- β -farnesene and (*Z*, *Z*)- α -farnesene (sesquiterpene hydrocarbons) detected at ca. 6–8%. With regard to oxides, cineole amounted for 7.3% of Egyptian sumac aroma blend, at two fold the levels that were present in specimens from Jordan (3.2%) and Palestine (2.2%) (Table 1).

In contrast, roasted fruit aroma was predominated by furan/aldehydes at ca. 58% followed by sesquiterpene hydrocarbons at 27%. A dramatic change in fruits' aroma profile was observed upon roasting, exemplified in high furan/aldehyde (58.1%) and ketone (6.1%) levels in roasted fruit concurrent with a marked decrease in the other eight volatile classes (Table 2). Roasted specimens were particularly enriched in furfural (34.3%) and (*E*)-nonanal (12.2%) followed by 3-thujanone (5.1%) (Table 1, Fig. 2). Sumac fruits are also used worldwide to prepare cold tea by simply soaking the fruit in cold water. Consequently, it was of interest to characterize the sumac cold tea aroma profile; a weak aroma profile was detected compared to fruit exemplified by much lower number of volatile components totaling 14 peaks (Fig. 2).

It should be noted that a relatively high standard deviation was observed for some minor constituents (Table 1) viz., β -linalool, styrene, octanal, nonanal and β -ocimene especially from the Jordanian specimen. Whether such large variance is associated with the

Table 1 Relative percentage of volatile compounds detected in fresh *R. coriaria* fruit (Sumac) from three Middle East sites and in response to roasting using SPME-GC-MS measurements ($n = 3$). The % identified for each class is bolded, while the main component from each site is underlined and bolded.

Volatile constituents	RT	KI	Fresh sumac						Roasted sumac		
			Egypt		Jordan		Palestine		Palestine		
Average (S.D.)											
Alcohols											
1	β -Linalool	9.93	1,077	3.38	(1.17)	1.84	(1.60)	0.90	(0.43)	0.28	(0.24)
2	Endo-Borneol	11.116	1,158	0.00	(0.00)	0.06	(0.05)	0.01	(0.02)	0.20	(0.08)
3	4-Terpineol	11.183	1,163	0.23	(0.31)	0.52	(0.49)	0.00	(0.00)	0.03	(0.05)
4	α -Terpineol	11.408	1,179	0.54	(0.48)	0.03	(0.06)	0.02	(0.03)	0.00	(0.00)
Total alcohols				4.15		2.46		0.93		0.51	
Aromatics											
5	Styrene	6.433	874	0.20	(0.30)	0.69	(0.64)	1.08	(0.69)	0.03	(0.05)
6	Naphthalene	11.328	1,176	0.00	(0.00)	<u>15.88</u>	(4.18)	0.00	(0.00)	0.00	(0.00)
Total aromatics				0.20		16.56		1.08		0.03	
Esters											
7	Methyl nonanoate	11.608	1,193	1.30	(2.08)	0.26	(0.25)	0.00	(0.00)	0.10	(0.18)
8	Bornyl formate	11.833	1,209	0.00	(0.00)	0.00	(0.00)	0.01	(0.03)	0.07	(0.09)
9	Linalyl acetate	11.958	1,219	0.24	(0.41)	0.03	(0.06)	0.02	(0.03)	0.09	(0.13)
10	Bornyl acetate	12.523	1,261	0.00	(0.00)	0.00	(0.00)	0.01	(0.03)	0.07	(0.09)
11	Isobornyl formate	12.534	1,262	0.00	(0.00)	0.00	(0.00)	0.01	(0.03)	0.07	(0.09)
12	Nerol acetate	13.36	1,327	0.00	(0.00)	0.10	(0.09)	0.03	(0.05)	0.29	(0.21)
Total esters				1.54		0.39		0.09		0.68	
Ethers											
13	Estragole	11.393	1,177	0.00	(0.00)	0.00	(0.00)	0.00	(0.00)	0.00	(0.00)
14	Allyl p-methylbenzyl ether	13.598	1,346	4.46	(1.37)	0.89	(0.29)	2.27	(2.77)	0.38	(0.24)
15	Precocene I	14.725	1,439	1.70	(2.45)	0.29	(0.25)	0.35	(0.27)	0.34	(0.56)
Total ethers				6.17		1.17		2.62		0.72	
Furan/aldehydes											
16	Furfural	5.35	822	0.32	(0.34)	3.73	(3.26)	0.00	(0.00)	<u>34.37</u>	(10.55)
17	Maleic anhydride	6.092	857	0.00	(0.00)	0.00	(0.00)	0.00	(0.00)	2.57	(0.63)
18	Itaconic anhydride	7.599	935	0.90	(0.53)	0.29	(0.38)	1.80	(0.57)	4.29	(0.48)
19	Furfural, 5-methyl-	7.893	952	0.00	(0.00)	0.19	(0.33)	0.00	(0.00)	3.91	(1.13)
20	Octanal	8.408	982	1.22	(0.85)	0.65	(0.57)	0.36	(0.23)	0.47	(0.36)
21	Nonanal	10.008	1,082	1.37	(1.93)	0.76	(0.84)	0.93	(0.86)	12.20	(5.08)
22	Decanal	11.418	1,181	0.00	(0.00)	0.00	(0.00)	0.00	(0.00)	0.00	(0.00)
23	(Z)-2-Decenal	12.204	1,237	0.18	(0.26)	0.55	(0.47)	0.40	(0.19)	0.38	(0.46)
Total furan/aldehydes				3.99		6.17		3.49		58.19	
Hydrocarbons											
24	Dodecane	11.242	1,171	0.00	(0.00)	0.03	(0.05)	0.00	(0.00)	0.00	(0.00)
Total hydrocarbons				0.00		0.03		0.00		0.00	

(continued on next page)

Table 1 (continued)

Volatile constituents	RT	KI	Fresh sumac						Roasted sumac		
			Egypt		Jordan		Palestine		Palestine		
			Average (S.D.)								
Ketones											
25	Camphenone, 6-	9.34	1,039	1.20	(1.16)	0.29	(0.26)	0.42	(0.20)	0.56	(0.22)
26	Acetophenone	9.549	1,052	0.18	(0.15)	0.00	(0.00)	0.01	(0.02)	0.00	(0.00)
27	3-Thujanone	10.105	1,088	0.93	(0.59)	0.89	(0.77)	0.84	(0.07)	5.16	(3.74)
28	Camphor	10.758	1,133	0.00	(0.00)	0.00	(0.00)	0.00	(0.00)	0.00	(0.00)
29	<i>p</i> -Menthone	10.822	1,137	0.00	(0.00)	0.00	(0.00)	0.00	(0.00)	0.00	(0.00)
30	Pyranone	10.917	1,144	0.00	(0.00)	0.00	(0.00)	0.00	(0.00)	0.40	(0.68)
31	Carvone	12.075	1,228	0.00	(0.00)	0.03	(0.06)	0.00	(0.00)	0.02	(0.03)
Total ketones				2.30		1.21		1.26		6.14	
Monoterpene hydrocarbon											
32	α -Pinene	7.143	909	4.05	(1.55)	1.98	(0.15)	16.70	(5.56)	2.01	(1.81)
33	α -Fenchene	7.45	927	0.18	(0.16)	0.00	(0.00)	0.80	(0.52)	0.04	(0.04)
34	β -Pinene	7.948	957	1.79	(1.46)	0.50	(0.44)	0.84	(0.52)	0.11	(0.06)
35	β -Myrcene	7.95	956	0.88	(0.54)	0.18	(0.16)	0.17	(0.29)	0.17	(0.12)
36	β -Thujene	8.483	986	1.06	(0.52)	0.82	(0.31)	1.39	(1.84)	0.59	(0.83)
37	4-Carene	8.602	993	0.42	(0.29)	0.31	(0.27)	0.08	(0.14)	0.09	(0.02)
38	1,3,8- <i>p</i> -Menthatriene	8.745	1,001	1.42	(0.19)	0.81	(0.71)	0.28	(0.33)	0.02	(0.03)
39	O-Cymene	8.768	1,003	7.73	(1.27)	4.25	(1.87)	2.40	(0.82)	0.23	(0.09)
40	Limonene	8.827	1,007	7.36	(3.63)	3.36	(0.73)	3.90	(1.03)	0.73	(0.12)
41	β -Phellandrene	8.849	1,009	0.47	(0.15)	0.55	(0.49)	0.22	(0.38)	0.08	(0.02)
42	β -Ocimene	9.042	1,020	7.50	(0.80)	3.83	(2.93)	3.21	(1.63)	0.85	(0.41)
43	γ -Terpinene	9.283	1,036	0.66	(0.43)	0.29	(0.25)	0.08	(0.14)	0.13	(0.09)
44	β -Terpinene	9.289	1,035	0.33	(0.15)	0.17	(0.16)	0.06	(0.11)	0.19	(0.04)
45	Unknown monoter- pene	9.7171	1,063	0.38	(0.17)	0.17	(0.23)	0.03	(0.05)	0.06	(0.00)
46	<i>p</i> -Cymenene	9.81	1,069	0.10	(0.17)	0.11	(0.10)	0.00	(0.00)	0.02	(0.03)
47	Unknown monoterpene	12.533	1,262	0.00	(0.00)	0.00	(0.00)	0.15	(0.15)	0.18	(0.20)
Total monoterpene hydrocarbon				34.33		17.33		30.32		5.51	
Oxides											
48	Cineole	8.908	1,012	7.27	(2.98)	3.25	(0.81)	2.23	(0.15)	0.53	(0.31)
Total oxides				7.27		3.25		2.23		0.53	
Sesquiterpene hydrocarbon											
49	Unknown sesquiterpene	12.631	1,270	0.00	(0.00)	0.13	(0.11)	0.01	(0.02)	0.06	(0.08)
50	α -Longipinene	13.393	1,330	0.00	(0.00)	0.78	(0.25)	0.53	(0.46)	0.17	(0.21)
51	Copaene	13.662	1,352	0.00	(0.00)	0.17	(0.15)	0.17	(0.22)	0.12	(0.10)
52	α -Cubebene	13.675	1,353	1.29	(0.40)	0.60	(0.07)	0.93	(0.67)	0.27	(0.22)
53	Isocaryophyllene	14.042	1,383	4.42	(0.52)	5.26	(0.81)	5.76	(0.81)	0.50	(0.74)
54	(<i>E</i>)- β -Farnesene	14.05	1,383	6.05	(1.69)	6.58	(1.94)	8.26	(1.49)	0.07	(0.03)

(continued on next page)

Table 1 (continued)

Volatile constituents	RT	KI	Fresh sumac						Roasted sumac		
			Egypt		Jordan		Palestine		Palestine		
			Average (S.D.)								
55	(Z, Z)- α -Farnesene	14.119	1,389	6.02	(1.98)	7.62	(1.97)	8.60	(1.41)	6.84	(6.42)
56	Longifolene	14.2	1,396	4.42	(0.52)	5.23	(0.81)	5.73	(0.84)	4.81	(3.96)
57	Caryophyllene	14.252	1,400	4.46	(1.37)	5.29	(1.33)	6.21	(1.13)	4.21	(3.11)
58	(E)- β -Farnesene isomer	14.433	1,415	3.72	(2.69)	6.51	(2.00)	5.73	(5.12)	0.64	(0.67)
59	Aromadendrene	14.558	1,425	2.15	(3.04)	3.70	(5.72)	2.74	(4.10)	0.45	(0.30)
60	Farnesene isomer	14.575	1,426	1.29	(0.40)	1.75	(0.15)	2.81	(0.97)	0.38	(0.42)
61	α -Humulene	14.662	1,433	0.93	(0.50)	1.48	(0.40)	1.49	(0.22)	1.29	(0.90)
62	(Z)-Muurolo-4(14),5-diene	14.817	1,446	1.29	(0.40)	0.75	(0.79)	1.25	(0.40)	0.96	(0.67)
63	Germacrene D	14.841	1,449	2.83	(2.38)	2.46	(3.56)	2.34	(2.71)	0.82	(0.61)
64	γ -Muurolole	15.083	1,468	0.00	(0.00)	0.27	(0.24)	0.51	(0.79)	0.60	(0.17)
65	α -Muurolole	15.123	1,471	0.26	(0.23)	0.17	(0.22)	0.37	(0.32)	0.90	(0.58)
66	β -Bisabolene	15.153	1,474	0.93	(0.50)	1.64	(0.27)	1.29	(1.16)	0.39	(0.32)
67	γ -Cadinene	15.342	1,489	0.00	(0.00)	0.00	(0.00)	0.35	(0.32)	0.82	(0.55)
68	δ -Cadinene, (+)-	15.359	1,491	0.00	(0.00)	0.28	(0.27)	1.04	(0.91)	1.79	(1.18)
69	Calamenene	15.442	1,498	0.00	(0.00)	0.17	(0.15)	0.17	(0.20)	0.50	(0.29)
70	Naphthalene, 1,2,3,4,4a,7-hexahydro-1,6-dimethyl-4-(1-methylethyl)-	15.575	1,507	0.00	(0.00)	0.17	(0.15)	0.68	(0.61)	0.36	(0.24)
71	Unknown sesquiterpene	15.628	1,511	0.00	(0.00)	0.41	(0.40)	0.98	(0.86)	0.30	(0.19)
72	α -Calacorene	15.705	1,517	0.00	(0.00)	0.03	(0.05)	0.03	(0.04)	0.30	(0.11)
73	Unknown sesquiterpene	15.977	1,525	0.00	(0.00)	0.00	(0.00)	0.00	(0.00)	0.11	(0.03)
74	Unknown sesquiterpene	21.707	1,853	0.00	(0.00)	0.00	(0.00)	0.00	(0.00)	0.03	(0.06)
Total sesquiterpene hydrocarbon				40.06		51.44		57.98		27.71	
Total volatiles				100.00	0.00	100.00	0.00	100.00	0.00	100.00	0.00

experimental setup and detection method has yet to be determined by employing other detectors viz. the flame ionization detector. FID detection or automated SPME in volatiles' extraction step can help minimize such variance.

Multivariate PCA and OPLS-DA analyses of fresh, roasted and cold tea of *R. coriaria* fruit volatile data

Multivariate PCA (Figs. 3 and 4 & Fig. S2) was carried out to explore the relative variability within the different specimens and to identify geographical origin's (viz. Egypt, Jordan and Palestine) impact on fresh sumac fruit aroma in an untargeted manner. Multivariate data analyses additionally help in identifying potential markers for each fruit origin. Palestinian and Jordanian sumac specimens were found more or less clustered together on the right

Table 2 Relative percentile (%) of the 10 classes of volatile compounds detected in fresh and roasted *R. coriaria* fruit (sumac) from three Middle East sites as analyzed using SPME-GC-MS.

No. of volatile constituents	Class	Fresh sumac			Roasted sumac
		Egypt	Jordan	Palestine	Palestine
		Average (%)			
4	Total alcohols	4.15	2.46	0.93	0.51
2	Total aromatics	0.20	16.56	1.08	0.03
6	Total esters	1.54	0.39	0.09	0.68
3	Total ethers	6.17	1.17	2.62	0.72
8	Total furan/aldehyde	3.99	6.17	3.49	58.2
1	Total hydrocarbons	0	0.03	0	0
7	Total ketones	2.30	1.21	1.26	6.14
16	Total monoterpene Hydrocarbons	34.33	17.33	30.3	5.51
1	Total oxide	7.27	3.25	2.23	0.53
26	Total sesquiterpene hydrocarbon	40.06	51.44	58	27.7

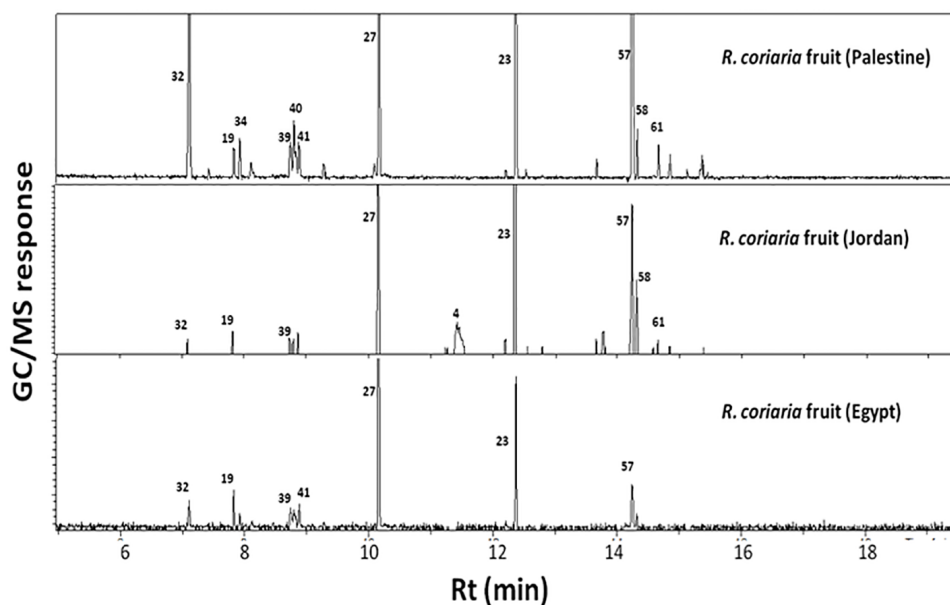


Figure 1 Representative SPME-GC-MS chromatogram of fresh *R. coriaria* fruit (sumac) collected from Egypt, Jordan and Palestine. Assigned peak numbers follow those listed in Table 1.

Full-size [DOI: 10.7717/peerj.5121/fig-1](https://doi.org/10.7717/peerj.5121/fig-1)

side of PC1 (positive score values). In contrast, Egyptian sumac was positioned on the left side of PC1 (Fig. 3A). A total of 74 volatiles' abundance data were subjected to PCA analysis with two major principle components (PC1/PC2) accounting for 60% of the total variance. A PCA loading plot (Fig. 3B) revealed that α -pinene contributed the most

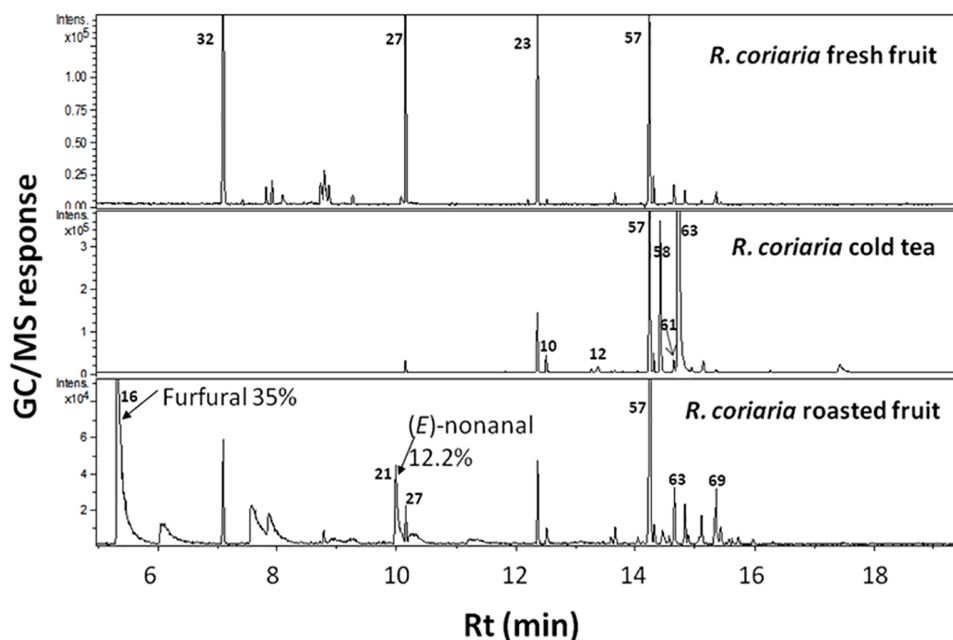


Figure 2 Representative SPME-GC-MS chromatogram of fresh, cold tea and roasted *R. coriaria* fruit (sumac) from Palestine. Assigned peak numbers correspond to volatiles listed in Table 1.

Full-size [DOI: 10.7717/peerj.5121/fig-2](https://doi.org/10.7717/peerj.5121/fig-2)

positively along PC1 and PC2, being most abundant in Palestinian sumac in agreement with results presented in Table 1. In contrast, *o*-cymene and limonene located on the far negative side of PC1 were more enriched in Egyptian specimens. Roasting was found to influence sumac aroma profile more than the growth habitat as revealed from PCA analysis (Fig. 4A). Roasted specimens were positioned to the right side of PC1 (positive side) being most distant in composition, whereas fresh fruits and cold tea specimens were all positioned together on the left side of PC1 (negative side). The PCA model (Fig. 4A) was prescribed by PC1 and PC2 accounting for 45% and 24% of the variance, respectively. Unique aroma compounds found in roasted specimens included furfural and nonanal (Fig. 4B). To help identify volatile markers unique for roasted specimens, OPLS-DA (orthogonal projection to latent structures-discriminant analysis) was employed (Fig. S2). The OPLS-DA score plot of roasted versus unroasted fruit showed a clear segregation between roasted and fresh samples explaining 97% of the total variance (R^2) and with a prediction goodness parameter $Q^2 = 95\%$. The respective S-plot (a remarkable parameter that compares the variable magnitude versus its reliability in OPLS) identified furfural and nonanal as markers of the roasting process (Fig. S2-B) and was in agreement with PCA analysis. The OPLS-DA model of cold sumac tea modelled against fresh fruit failed to provide a fit model as in the roasted specimen case, with lower R^2 and Q^2 values of 85% and 89% respectively (Fig. S2-C). In general, the aroma of sumac cold tea appeared to be more dominated by esters viz. bornyl acetate, nerol acetate and sesquiterpenes viz. (β)-caryophyllene and α -humulene, as revealed from derived the S-plot (Fig. S2-D).

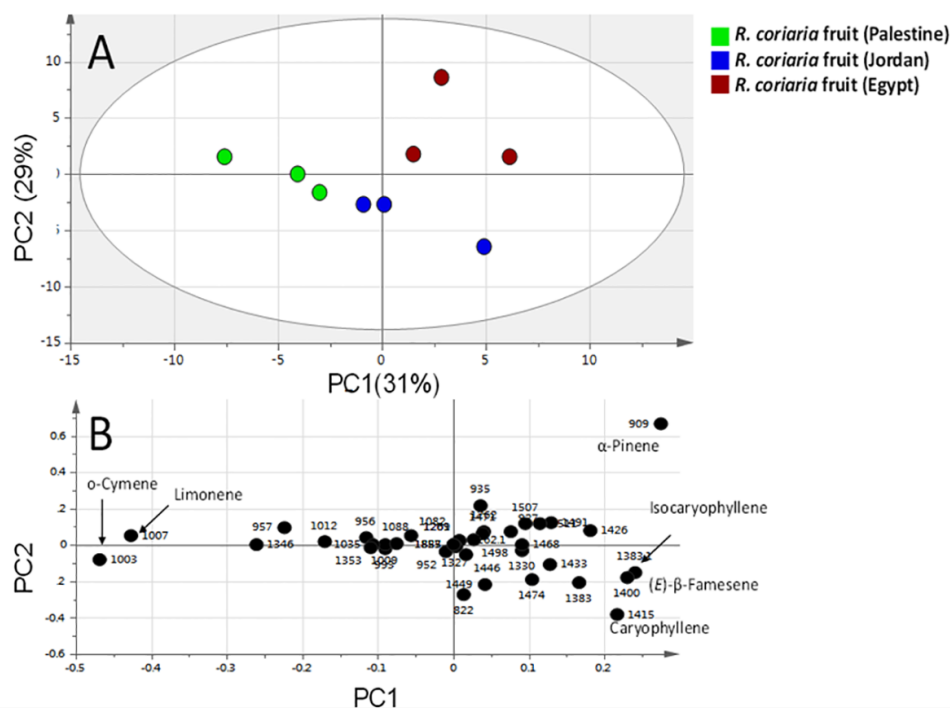


Figure 3 Principal component analyses of fresh *R. coriaria* fruit (sumac) from three Middle East sites analyzed by SPME-GC-MS ($n = 3$). Clusters are located at the distinct positions in two-dimensional space described by two vectors of principal component 1 (PC1) = 31% and PC2 = 29%. (A) Score plot of PC1 vs. PC2 scores. (B) Loading plot for PC1 & PC2 contributing volatile peaks and their assignments, with each volatile denoted by its KI value.

Full-size DOI: 10.7717/peerj.5121/fig-3

DISCUSSION

Sumac is commonly used as a spice or appetizer, simply by blending its dried ground fruits with freshly cut onion, or mixing it with plant oil or adding it to poultry dishes (Kossah *et al.*, 2009; Shabbir, 2012) in addition to incorporating it in several nutraceutical products (Wang & Zhu, 2017). Also, sumac fruit oil and protein were used in hair care products (Gupta *et al.*, 2010).

The main objective of this study was to explore the variation in volatile compositions among *R. coriaria* from three different sites including Palestine, Jordan and Egypt and to assess the impact of roasting on fruits' volatile constituents. With regards to the impact of growth habitat on sumac volatiles' profile, fruit specimens derived from Jordan and Palestine appeared to be similar in volatile composition and in being distant from those of Egypt. Such results are expected considering the close geographical location of Jordan and Palestine and their similar climatic conditions. Abundance of monoterpenes has been reported in sumac fruit grown in Italy (Giovannelli *et al.*, 2017; Reidel *et al.*, 2017), with α -pinene, β -ocimene and fenchone as the main components. Whereas, prevalence of sesquiterpenes was reported in sumac fruit originated from Turkey and Iran (Bahar & Altug, 2009; Gharaei *et al.*, 2013; Morshedloo *et al.*, 2018) with β -caryophyllene as the most abundant. It should be noted that nonadecane (Bahar & Altug, 2009) and p-anisaldehyde

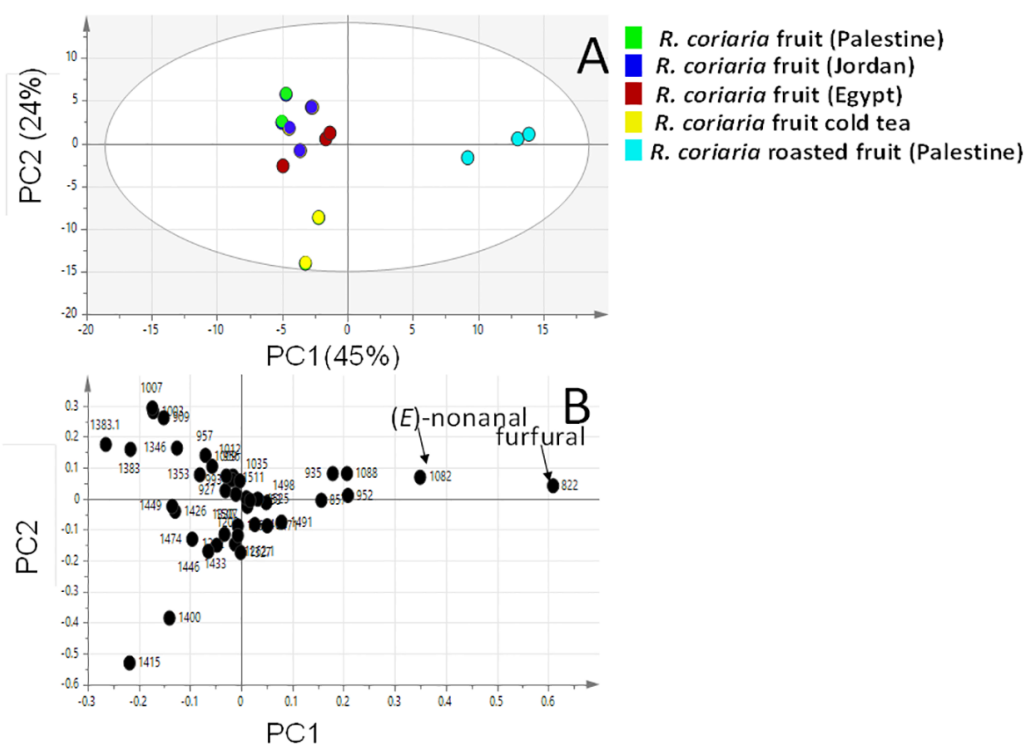


Figure 4 Principal component analyses of fresh, roasted and cold tea *Rhus coriaria* fruit (sumac) analyzed by SPME-GC-MS ($n = 3$). Clusters are located at the distinct positions in two-dimensional space described by two vectors of principal component 1 (PC1) = 45% and PC2 = 24%. (A) Score plot of PC1 vs. PC2 scores. (B) Loading plot for PC1 & PC2 contributing mass peaks and their assignments, with each volatile denoted by its KI value.

Full-size DOI: 10.7717/peerj.5121/fig-4

(Giovanelli et al., 2017), previously reported as major components of *R. coriaria* essential oil, were not detected in the current study. Such discrepancy could be attributed to either the different collection methods that are SPME adopted, herein involving no heat treatment in contrary to steam distillation, or to regional differences owing to agricultural or ecological factors (Bahar & Altug, 2009; Giovanelli et al., 2017).

Upon roasting, a marked variation in volatile profile was detected. This variation is exemplified in higher furfural and nonanal levels in roasted samples. Likewise, previous reports (Bahar & Altug, 2009; Giovanelli et al., 2017; Morshedloo et al., 2018; Reidel et al., 2017) on fresh sumac fruit analyzed using SPME from Turkey, Italy and Iran reported furfural and nonanal presence at trace levels, suggesting that these are key markers indicative of the roasting process. Elevated levels of nonanal (23%) were only detected in hydro-distilled sumac fruit in which heating was applied comparable to that of the roasting effect (Morshedloo et al., 2018). Our results suggest that both furfural and nonanal can be utilized as markers to distinguish between roasted and fresh sumac samples or to predict whether degradation has occurred in sumac fruits upon storage at elevated temperature. Sumac fruits are enriched in both reducing sugar (xylose) and amino acids (Demchik et al., 2015), regarded as the precursor compounds for Maillard reaction likely

to occur in sumac fruits upon roasting (*Tamanna & Mahmood, 2015*). Furfurals are major products of Maillard reaction detected in roasted coffee and cocoa beans (*Martins, Jongen & Van Boekel, 2000*), roselle (*Farag, Rasheed & Kamal, 2015*) and during processing of soybeans, pasta and meat (*Tamanna & Mahmood, 2015*). Maillard reaction involves the reaction of amino acids with a reducing sugar in the presence of heat, typical of the roasting process (*Nie et al., 2013; Yaylayan, 2006*). Although, furans are of common occurrence in thermal processed foods, increasing awareness of furans' health hazard as a possible carcinogen is recognized (*Nie et al., 2013; Reinhard et al., 2004*). According to the FDA guidelines, the average permitted level of furan should not exceed 170 ng/g (*US Food and Drug Administration, 2004*).

In order to identify geographical origin's (viz. Egypt, Jordan and Palestine) impact on fresh sumac fruit aroma profile in an untargeted manner and to help in identifying potential markers for each fruit origin, PCA was attempted to model the volatile abundance data. Palestinian and Jordanian sumac specimens clustered together distant from those of Egyptian sumac. In an attempt to evaluate the effect of heat on sumac, roasting was carried out as previously explained (experimental section). The respective S-plot showed a marked increase in furfural and nonanal upon roasting. Such high furan levels (up to 40%) in roasted specimens warrant more for its quantification in heated sumac food products for safety and health issues.

CONCLUSION

In the present study, we provide the first comprehensive volatile profile of sumac fruits from three different Middle Eastern countries. A total of 74 different volatile constituents were identified with sesquiterpene hydrocarbons as main class followed by monoterpene hydrocarbons. Egyptian sumac was more enriched in *o*-cymene, β -ocimene and limonene. Whereas, Jordanian and Palestinian specimens exhibited more close volatile profile being enriched in naphthalene and α -pinene. A significant alteration in sumac aroma profile was observed upon roasting, accompanied by a marked increase in furan/aldehydes viz. furfural, 5-methyl furfural, concurrent with a decrease in sesquiterpene and monoterpene hydrocarbons. The prevalence of furans in the roasted sample suggest a distinct change in fruit aroma upon heating and the furan levels should be monitored, considering its health hazardousness. Our volatile profiling provided the true aroma profile in sumac fruit growing in the Middle East, which can be further applied for investigating other factors such as storage, ripening stage, and analyzing its various commercial food products.

ADDITIONAL INFORMATION AND DECLARATIONS

Funding

Mohamed A. Farag was supported by Jesour grant number 30 from the Academy of Scientific Research & Technology (ASRT), Egypt and the American University of Cairo Research Support Grant (RSG1-18). The funders had no role in study design, data collection and analysis, decision to publish, or preparation of the manuscript.

Grant Disclosures

The following grant information was disclosed by the authors:
Academy of Scientific Research & Technology (ASRT), Egypt: 30.
American University of Cairo Research: RSG1-18.

Competing Interests

Mohamed A. Farag is an Academic Editor for PeerJ.

Author Contributions

- Mohamed A. Farag conceived and designed the experiments, performed the experiments, analyzed the data, contributed reagents/materials/analysis tools, prepared figures and/or tables, authored or reviewed drafts of the paper, approved the final draft.
- Nesrin M. Fayek analyzed the data, prepared figures and/or tables, authored or reviewed drafts of the paper, approved the final draft.
- Ibrahim Abou Reidah performed the experiments, contributed reagents/materials/analysis tools.

Data Availability

The following information was supplied regarding data availability:
The raw data are provided in the [Supplemental Files](#).

Supplemental Information

Supplemental information for this article can be found online at <http://dx.doi.org/10.7717/peerj.5121#supplemental-information>.

REFERENCES

- Abu-Reidah IM, Ali-Shtayeh MS, Jamous RM, Arráez-Román D, Segura-Carretero A. 2015.** HPLC–DAD–ESI-MS/MS screening of bioactive components from *Rhus coriaria* L.(Sumac) fruits. *Food Chemistry* **166**:179–191
[DOI 10.1016/j.foodchem.2014.06.011](https://doi.org/10.1016/j.foodchem.2014.06.011).
- Abu-Reidah IM, Jamous RM, Ali-Shtayeh MS. 2014.** Phytochemistry, pharmacological properties and industrial applications of *Rhus coriaria* L.(Sumac). *Jordan Journal of Biological Sciences* **7**:233–244.
- Bahar B, Altug T. 2009.** Flavour characterization of sumach (*Rhus coriaria* L.) by means of GC/MS and sensory flavour profile analysis techniques. *International Journal of Food Properties* **12**:379–387 [DOI 10.1080/10942910701799249](https://doi.org/10.1080/10942910701799249).
- Bozan B, Kosar M, Tunalier Z, Ozturk N, Baser K. 2003.** Antioxidant and free radical scavenging activities of *Rhus coriaria* and *Cinnamomum cassia* extracts. *Acta Alimentaria* **32**:53–61 [DOI 10.1556/AAlim.32.2003.1.7](https://doi.org/10.1556/AAlim.32.2003.1.7).
- Broeckling CD, Reddy IR, Duran AL, Zhao X, Sumner LW. 2006.** MET-IDEA: data extraction tool for mass spectrometry-based metabolomics. *Analytical Chemistry* **78**:4334–4341 [DOI 10.1021/ac0521596](https://doi.org/10.1021/ac0521596).

- Brunke EJ, Hammerschmidt FJ, Schmaus G, Akgül A. 1993.** The essential oil of *Rhus coriaria* L. fruits. *Flavour and Fragrance Journal* **8**:209–214
DOI [10.1002/ffj.2730080408](https://doi.org/10.1002/ffj.2730080408).
- Candan F. 2003.** Effect of *Rhus coriaria* L.(Anacardiaceae) on superoxide radical scavenging and xanthine oxidase activity. *Journal of Enzyme Inhibition and Medicinal Chemistry* **18**:59–62 DOI [10.1080/1475636031000069273](https://doi.org/10.1080/1475636031000069273).
- Demchik S, Rajangam A, Hall J, Singaas E. 2015.** Fatty Acids, Carbohydrates and total proteins of wild sumac (*Rhus typhina* L.) drupes from the upper Midwest of the United States. *American Journal of Essential Oils and Natural Products* **3**:30–34.
- El Hasasna H, Athamneh K, Al Samri H, Karuvantevida N, Al Dhaheri Y, Hisaindee S, Ramadan G, Al Tamimi N, AbuQamar S, Eid A. 2015.** *Rhus coriaria* induces senescence and autophagic cell death in breast cancer cells through a mechanism involving p38 and ERK1/2 activation. *Scientific Reports* **5**:13013 DOI [10.1038/srep13013](https://doi.org/10.1038/srep13013).
- Farag MA, Ali SE, Hodaya RH, El-Seedi HR, Sultani HN, Laub A, Eissa TF, Abou-Zaid FO, Wessjohann LA. 2017.** Phytochemical profiles and antimicrobial activities of *Allium cepa* red cv. and *A. sativum* subjected to different drying methods: a comparative MS-based metabolomics. *Molecules* **22**:1–18 DOI [10.3390/molecules22050761](https://doi.org/10.3390/molecules22050761).
- Farag MA, Rasheed DM, Kamal IM. 2015.** Volatiles and primary metabolites profiling in two *Hibiscus sabdariffa* (roselle) cultivars via headspace SPME-GC-MS and chemometrics. *Food Research International* **78**:327–335 DOI [10.1016/j.foodres.2015.09.024](https://doi.org/10.1016/j.foodres.2015.09.024).
- Gharaei A, Khajeh M, Ghaffari M, Choopani A. 2013.** Iranian *Rhus coriaria* (sumac) essential oils extraction. *Journal of Essential Oil Bearing Plants* **16**:270–273
DOI [10.1080/0972060X.2013.794020](https://doi.org/10.1080/0972060X.2013.794020).
- Giovanelli S, Giusti G, Cioni PL, Minissale P, Ciccarelli D, Pistelli L. 2017.** Aroma profile and essential oil composition of *Rhus coriaria* fruits from four Sicilian sites of collection. *Industrial Crops and Products* **97**:166–174
DOI [10.1016/j.indcrop.2016.12.018](https://doi.org/10.1016/j.indcrop.2016.12.018).
- Gupta A, Malviya R, Singh TP, Sharma PK. 2010.** Indian medicinal plants used in hair care cosmetics: a short review. *Pharmacognosy Journal* **2**:361–364
DOI [10.1016/S0975-3575\(10\)80110-5](https://doi.org/10.1016/S0975-3575(10)80110-5).
- Kossah R, Nsabimana C, Zhang H, Chen W. 2010.** Optimization of extraction of polyphenols from Syrian sumac (*Rhus coriaria* L.) and Chinese sumac (*Rhus typhina* L.) fruits. *Research Journal of Phytochemistry* **4**:146–153
DOI [10.3923/rjphyto.2010.146.153](https://doi.org/10.3923/rjphyto.2010.146.153).
- Kossah R, Nsabimana C, Zhao J, Chen H, Tian F, Zhang H, Chen W. 2009.** Comparative study on the chemical composition of Syrian sumac (*Rhus coriaria* L.) and Chinese sumac (*Rhus typhina* L.) fruits. *Pakistan Journal of Nutrition* **8**:1570–1574
DOI [10.3923/pjn.2009.1570.1574](https://doi.org/10.3923/pjn.2009.1570.1574).
- Kurucu S, Koyuncu M, Güvenç A, Baser K, Özek T. 1993.** The essential oils of *Rhus coriaria* L.(Sumac). *Journal of Essential Oil Research* **5**:481–486
DOI [10.1080/10412905.1993.9698267](https://doi.org/10.1080/10412905.1993.9698267).

- Mamedov N, Gardner Z, Craker LE. 2005.** Medicinal plants used in Russia and Central Asia for the treatment of selected skin conditions. *Journal of Herbs, Spices & Medicinal Plants* **11**:191–222 DOI [10.1300/J044v11n01_07](https://doi.org/10.1300/J044v11n01_07).
- Martins SI, Jongen WM, Van Boekel MA. 2000.** A review of Maillard reaction in food and implications to kinetic modelling. *Trends in Food Science & Technology* **11**:364–373 DOI [10.1016/S0924-2244\(01\)00022-X](https://doi.org/10.1016/S0924-2244(01)00022-X).
- Morshedloo MR, Craker LE, Salami A, Nazeri V, Sang H, Maggi F. 2017.** Effect of prolonged water stress on essential oil content, compositions and gene expression patterns of mono- and sesquiterpene synthesis in two oregano (*Origanum vulgare* L.) subspecies. *Plant Physiology and Biochemistry* **111**:119–128 DOI [10.1016/j.plaphy.2016.11.023](https://doi.org/10.1016/j.plaphy.2016.11.023).
- Morshedloo MR, Ebadi A, Maggi F, Fattahi R, Yazdani D, Jafari M. 2015.** Chemical characterization of the essential oil compositions from Iranian populations of *Hypericum perforatum* L. *Industrial Crops and Products* **76**:565–573 DOI [10.1016/j.indcrop.2015.07.033](https://doi.org/10.1016/j.indcrop.2015.07.033).
- Morshedloo MR, Maggi F, Neko HT, Aghdam MS. 2018.** Sumac (*Rhus coriaria* L.) fruit: essential oil variability in Iranian populations. *Industrial Crops and Products* **111**:1–7 DOI [10.1016/j.indcrop.2017.10.002](https://doi.org/10.1016/j.indcrop.2017.10.002).
- Mozaffarian V. 2013.** *Identification of medicinal and aromatic plants of Iran*. Tehran: Farhang Moaser Publishers.
- Nie S, Huang J, Hu J, Zhang Y, Wang S, Li C, Marcone M, Xie M. 2013.** Effect of pH, temperature and heating time on the formation of furan in sugar–glycine model systems. *Food Science and Human Wellness* **2**:87–92 DOI [10.1016/j.fshw.2013.05.001](https://doi.org/10.1016/j.fshw.2013.05.001).
- Peter KV. 2012.** *Handbook of herbs and spices*. Cambridge: Elsevier.
- Pourahmad J, Eskandari MR, Shakibaei R, Kamalinejad M. 2010.** A search for hepatoprotective activity of aqueous extract of *Rhus coriaria* L. against oxidative stress cytotoxicity. *Food and Chemical Toxicology* **48**:854–858 DOI [10.1016/j.fct.2009.12.021](https://doi.org/10.1016/j.fct.2009.12.021).
- Ravindran P, Pillai G, Divakaran M. 2012.** Other herbs and spices: mango ginger to wasabi. In: *Handbook of herbs and spices*. Second Edition. Vol. 2. Cambridge: Elsevier, 557–582.
- Rayne S, Mazza G. 2007.** Biological activities of extracts from sumac (*Rhus* spp.): a review. *Plant Foods for Human Nutrition* **62**:165–175 DOI [10.1007/s11130-007-0058-4](https://doi.org/10.1007/s11130-007-0058-4).
- Reidel B, Vanessa R, Cioni PL, Majo L, Pistelli L. 2017.** Evolution of volatile emission in *Rhus coriaria* organs during different stages of growth and evaluation of the essential oil composition. *Chemistry & Biodiversity* **14**:1–12 DOI [10.1002/cbdv.201700270](https://doi.org/10.1002/cbdv.201700270).
- Reinhard H, Sager F, Zimmermann H, Zoller O. 2004.** Furan in foods on the Swiss market—method and results. *Mitteilungen aus Lebensmitteluntersuchung und Hygiene* **95**:532–535.
- Shabbir A. 2012.** *Rhus coriaria* linn, a plant of medicinal, nutritional and industrial importance: a review. *Journal of Animal and Plant Sciences* **22**:505–512.
- Tamanna N, Mahmood N. 2015.** Food processing and maillard reaction products: effect on human health and nutrition. *International Journal of Food Science* **2015**:1–6 DOI [10.1155/2015/526762](https://doi.org/10.1155/2015/526762).

- US Food and Drug Administration. 2004.** Exploratory data on furan in food.
- Wang S, Zhu F. 2017.** Chemical composition and biological activity of staghorn sumac (*Rhus typhina*). *Food Chemistry* **237**:431–443 DOI [10.1016/j.foodchem.2017.05.111](https://doi.org/10.1016/j.foodchem.2017.05.111).
- Yaylayan V. 2006.** Precursors, formation and determination of furan in food. *Journal für Verbraucherschutz und Lebensmittelsicherheit* **1**:5–9 DOI [10.1007/s00003-006-0003-8](https://doi.org/10.1007/s00003-006-0003-8).