


RESEARCH

Open Access



Changing epidemiology and challenges of malaria in China towards elimination

Shengjie Lai^{1,2,3} , Junling Sun², Nick W. Ruktanonchai^{1,4}, Sheng Zhou², Jianxing Yu^{2,5}, Isobel Routledge⁶, Liping Wang², Yaming Zheng², Andrew J. Tatem^{1,4} and Zhongjie Li^{2*}

Abstract

Background: Historically, malaria had been a widespread disease in China. A national plan was launched in China in 2010, aiming to eliminate malaria by 2020. In 2017, no indigenous cases of malaria were detected in China for the first time. To provide evidence for precise surveillance and response to achieve elimination goal, a comprehensive study is needed to determine the changing epidemiology of malaria and the challenges towards elimination.

Methods: Using malaria surveillance data from 2011 to 2016, an integrated series of analyses was conducted to elucidate the changing epidemiological features of autochthonous and imported malaria, and the spatiotemporal patterns of malaria importation from endemic countries.

Results: From 2011 to 2016, a total of 21,062 malaria cases with 138 deaths were reported, including 91% were imported and 9% were autochthonous. The geographic distribution of local transmission have shrunk dramatically, but there were still more than 10 counties reporting autochthonous cases in 2013–2016, particularly in counties bordering with countries in South-East Asia. The importation from 68 origins countries had an increasing annual trend from Africa but decreasing importation from Southeast Asia. Four distinct communities have been identified in the importation networks with the destinations in China varied by origin and species.

Conclusions: China is on the verge of malaria elimination, but the residual transmission in border regions and the threats of importation from Africa and Southeast Asia are the key challenges to achieve and maintain malaria elimination. Efforts from China are also needed to help malaria control in origin countries and reduce the risk of introduced transmission.

Keywords: Malaria, Epidemiology, Elimination, Importation, China, Africa, Southeast Asia

Background

Plasmodium malaria, transmitted via the bites of female *Anopheles* mosquitoes, is one of the most prevalent parasitic diseases affecting mankind. Although the global malaria burden has fallen from an estimated 239 million cases occurred worldwide in 2010 to 219 million cases in 2017, no significant progress in reducing global malaria cases was made for the first time in the last decade, especially between 2015 and 2017 [1–4]. However,

the progress of eliminating malaria in China seems to be encouraging.

Malaria was once widespread in China, with more than 90% population in China were estimated at risk of infection in the 1940s, and it was still highly endemic in China between 1950s and 1970s, with the highest record of 24 million cases reported in 1970 [5, 6]. Due to the widely use of anti-malarial medications, along with the unprecedented socioeconomic changes and urbanization in China, the incidence of malaria decreased gradually from 1980 to 2000, with only 20 cases per one million residents in 2000 [5, 6]. Although the resurgence of malaria occurred in central China between 2001 and 2006 [7, 8], the efforts of intensified control since 2007 resulted in a dip in the number of cases, reducing to less than 6

*Correspondence: lizj@chinacdc.cn

² Division of Infectious Disease, Key Laboratory of Surveillance and Early-Warning on Infectious Disease, Chinese Center for Disease Control and Prevention, Beijing, China

Full list of author information is available at the end of the article



cases per one million residents in 2010 [9]. Subsequently, a National Malaria Elimination Programme (NMEP) was launched in China in May 2010, aiming at achieving malaria elimination by 2020 [5, 10], and comprehensive intervention strategies have been adopted, e.g. the “1-3-7” approach: reporting cases within 1 day, investigation within 3 days, and response to prevent further transmission within 7 days [11, 12]. Consequently, the geographic range of locally transmitted malaria has shrunk dramatically in China, and for the first time zero indigenous cases were detected in 2017 [4, 13]. With the rapid growth of Chinese overseas travel and increasing investment in overseas projects from China in the last decade, however, imported malaria has been increasingly reported in China [14–17], and the introduced parasites might cause the resurgence of local transmission, which has occurred in countries that have eliminated malaria [18, 19].

In light of the historical achievement of eliminating malaria in China, a comprehensive analysis is needed to elucidate the changing epidemiology and challenges of malaria faced by China towards nationwide malaria elimination. Based on a contemporary dataset of individual cases, here an integrated analysis was conducted to determine the spatiotemporal and demographic features of autochthonous and imported malaria, the areas of residual local transmission, and the origin–destination networks of malaria importation. The evidence of this work helps to identify the challenges of eliminating malaria in China and support the update of precise strategies for NMEP and future needs in post-elimination era.

Methods

Data sources

The data of individual malaria cases were obtained from the Malaria Enhanced Surveillance Information System (MESIS) in China. The MESIS was launched in 2010 to actively collect epidemiological information of malaria cases (Additional file 1: Table S1), required by the Technical Scheme of China Malaria Elimination [11, 20]. All clinically diagnosed and laboratory-confirmed individual malaria cases reported in MESIS during 2011–2016 were included in this study. Laboratory-confirmed malaria cases referred to patients with a positive result from one of the laboratory tests including rapid diagnostic tests (RDTs), microscopy, or polymerase chain reaction (PCR): RDTs were the primary diagnostic tools in local level; microscopy was the gold standard method for case verification used in county, prefectural and provincial levels; and as PCR was more sensitive than microscopy, it was mainly used as a confirmatory technique for laboratory diagnosis of malaria at provincial levels for cases who had no parasites detected in blood examination or for identifying malaria parasites at the species level when

microscopy was equivocal [21, 22]. Clinically diagnosed cases, including species classification of these cases, were diagnosed according to symptoms, response to therapy, any previous diagnosis of malaria, and predominate species in the geographic origin of infection. An imported case was a malaria case who travelled to any malaria-endemic areas outside China within the month before illness onset, and the last country visited with ongoing malaria transmission was taken as the potential location of infection [23]. Otherwise, a malaria case was considered to be a probable autochthonous case [11].

Data analysis

The epidemiologic characteristics of malaria cases were summarized by autochthonous and imported malaria. The annual malaria incidence rate was calculated for imported, local, and all cases, respectively, by using the corresponding population data obtained from the National Statistical Bureau of China [24]. The annual incidence rate by county was mapped to define and compare the geographic distributions of autochthonous and imported malaria. Moreover, to present the space-explicit distribution of malaria in China, a smoothly tapered density surface based on the coordinates of individual cases was fitted by using the quartic kernel function and bandwidth described by Silverman [25]. The output density surface was compiled at a spatial resolution of 0.083333 decimal degrees per pixel (approx. 10 km at the Equator). The gridded geographic distributions of dominant *Anopheles* vectors, estimated by the Malaria Atlas Project using the boosted regression tree modelling approach [26], were overlaid with the polygons of counties with locally transmitted malaria in 2011–2016 to explore the potential high risk areas of residual transmission in China.

Based on the travel history of cases, the potential origin–destination routes of malaria importation from other endemic countries into 31 provinces of mainland China were identified [27]. To quantify the connectivity of malaria importation, the origin–destination networks were divided into communities densely connecting the origins (endemic countries) and the destinations (provinces in China) by modularity analysis, which compared the number of links inside a given module with the expected value for a randomized graph of the same size and same degree sequence [27–29]. Networks with high modularity have dense connections between the nodes within communities but sparse connections between nodes in different communities. The number of communities of networks is defined by the modularity optimization process, but it can be changed by setting resolution parameter (between 0.1 and 2), and a lower value can generate more communities [30,

31]. As the default value (1) of resolution parameter in modularity analysis only detected three communities with the largest group containing more than 90% origins and destinations of the importation networks, we used a resolution value of 0.9 to generate more small communities to understand the connectivity of this importation phenomenon.

Moreover, a linear regression model and a nonlinear regression model with cosine function [32] were used to explore the annual and seasonal trends of *Plasmodium* malaria importation by origins (Africa and Southeast Asia) and species (*Plasmodium vivax* and *Plasmodium falciparum*). A scatterplot was plotted to explore the correlation between malaria importation and autochthonous transmission in origin countries. The data of presumed and confirmed malaria cases reported by country in 2011–2016 were extracted from the annual World Malaria Report in 2017 published by the World Health Organization [1], and the corresponding population data published by United Nations [33] were used to define the average incidence rate of malaria reported by country. The R statistical software (Version 3.3.1, R Foundation for Statistical Computing, Vienna, Austria) and ArcGIS 10.3 (ESRI, Redlands, CA, USA) were used to data collation

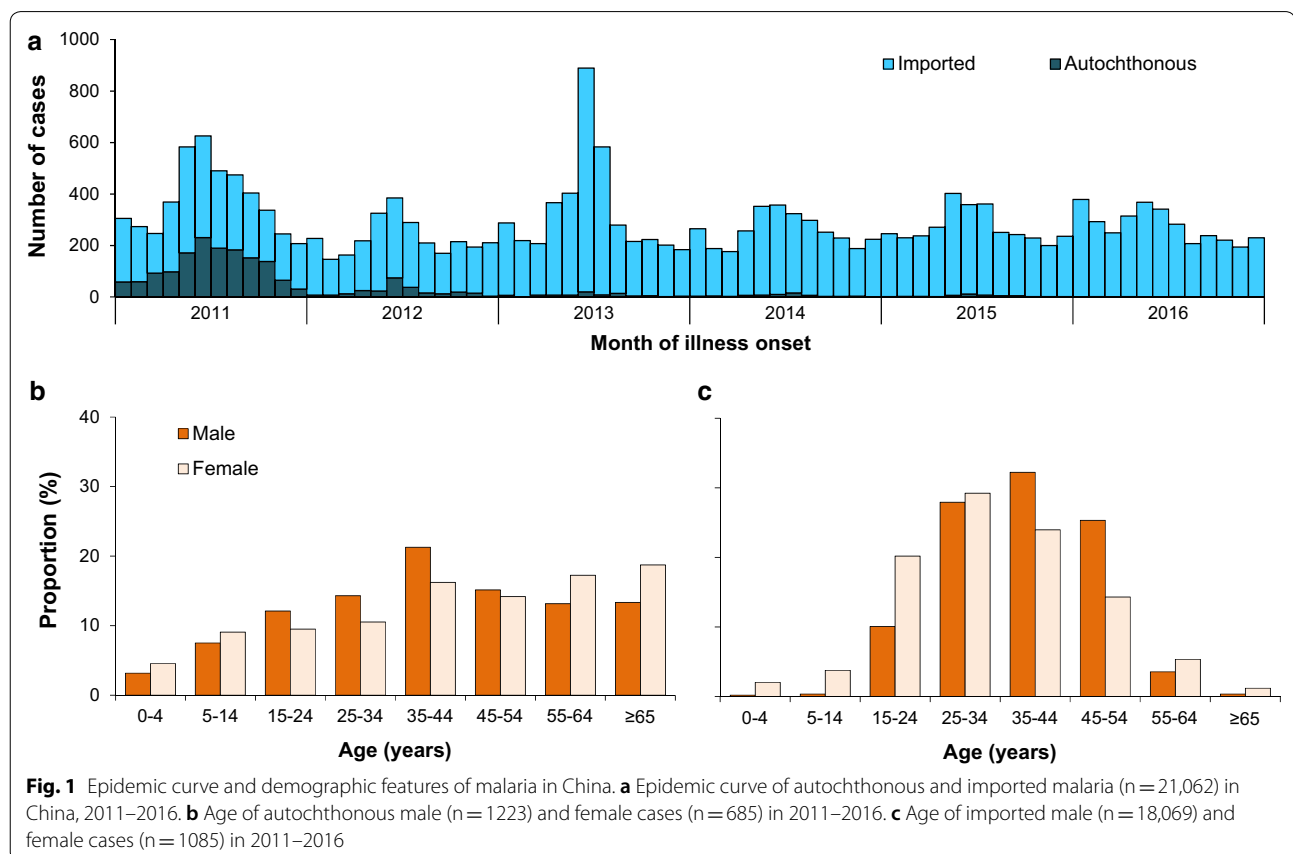
and analyses, and the Gephi 0.91 software was used to detect the communities of importation networks [34].

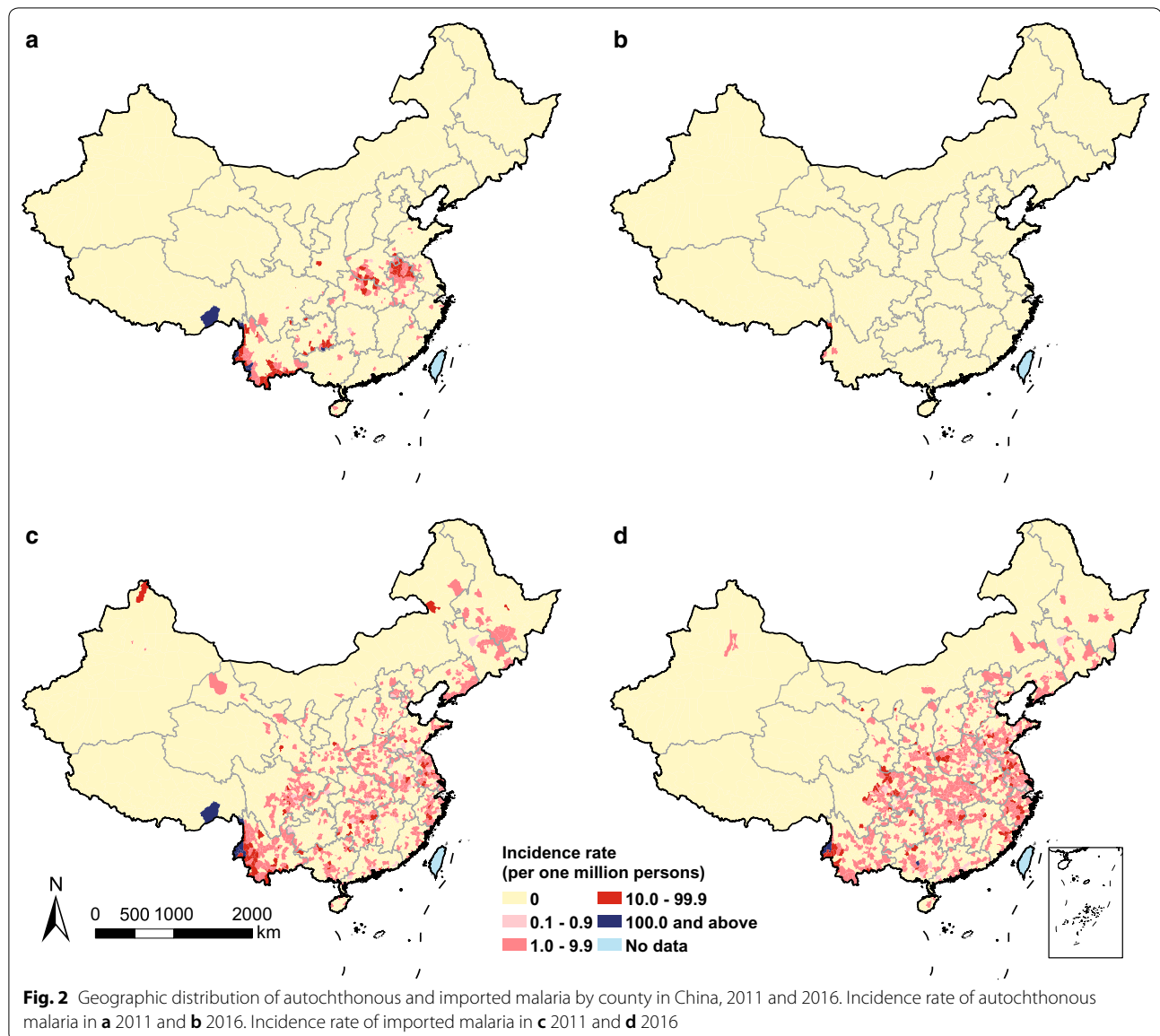
Results

Autochthonous malaria

A total of 21,062 malaria cases were reported between 2011 and 2016, of which 91% were imported and 9% were autochthonous (Additional file 2: Table S2). The number of autochthonous cases dropped from 1469 cases (1.1 cases per one million persons) in 2011 to 3 cases (0.002) in 2016 (Fig. 1a). Among autochthonous cases, most (90%) were infected with *P. vivax*, while *P. falciparum* was detected in most imported cases (62%). With the rapid shrinking geographic distribution of autochthonous malaria transmission, all counties in the border areas of Yunnan have reduced annual incidence rate to less than one case per 10,000 persons since 2013, and most counties have reduced autochthonous case to zero in 2016 (Fig. 2 and Additional file 3: Fig. S1). Only three autochthonous cases have been detected in counties along the border between Myanmar and Yunnan province in 2016.

Among the counties with only *Anopheles sinensis* and/or *Anopheles lesteri* as dominant vectors, the number of *P. vivax* and *P. falciparum* cases have been reduced



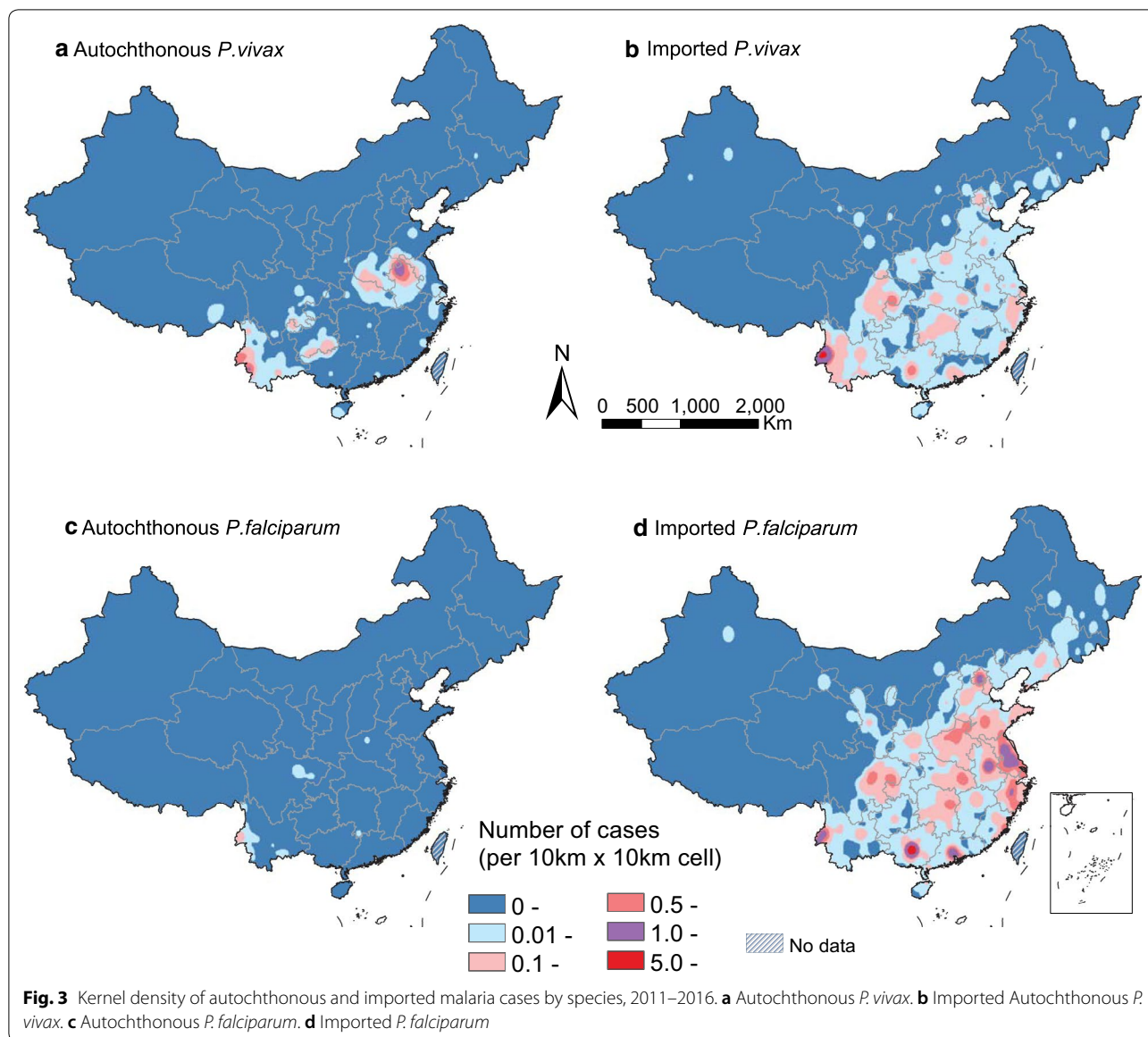


quickly in 2011–2013 (Additional file 4: Fig. S2). However, among the counties with other dominant vectors (e.g. *Anopheles minimus sensu lato*, *Anopheles dirus sl*, *Anopheles stephensi*, and *Anopheles maculatus*), there were still more than 10 counties reporting autochthonous cases in 2013–2016, particularly in counties of Yunnan province bordering with Myanmar and Laos, the south-east region of Tibet bordering with India, and Hainan island in the South China Sea (Fig. 3 and Additional file 3: Fig. S1). Additionally, 138 deaths were found in our dataset, and the case fatality risk of imported cases (0.7%) was higher than that (0.1%) of autochthonous cases. All 137 deaths of imported cases were detected in the counties without local malaria transmission in 2011–2016, with

most deaths in imported cases (94.2%, 129/137) and the only death in autochthonous cases were infected with *P. falciparum*.

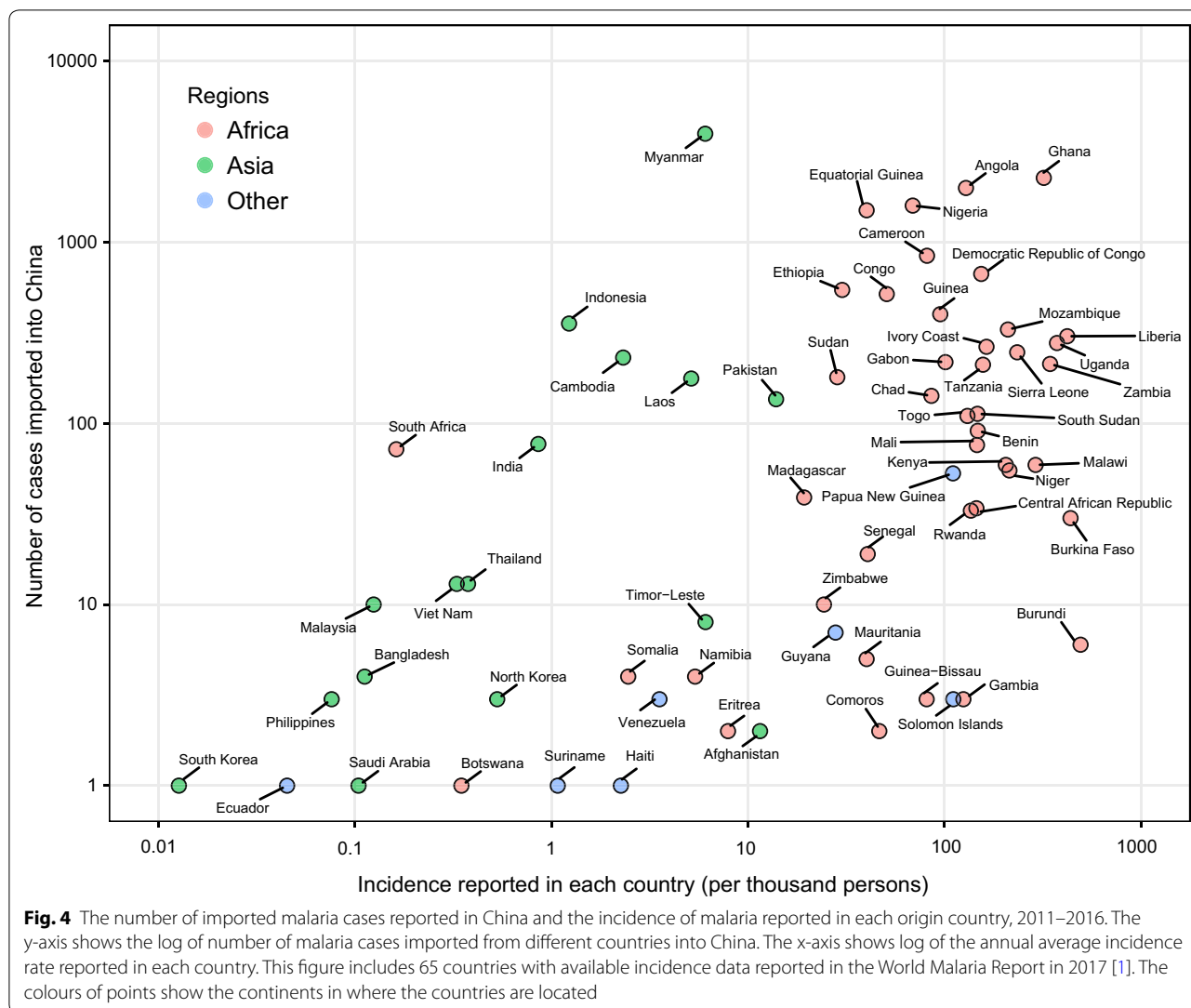
Imported malaria

A total of 19,154 cases imported from 68 countries were reported in mainland China during 2011–2016, with most cases from Africa (72%) and Southeast Asia (25%). The magnitude of importations might be partially related to the endemicity of malaria in origins (Fig. 4). Most cases (79%) imported from Africa ($n=13,728$) were infected with *P. falciparum*, while *P. vivax* was detected in 79% cases from Southeast Asia ($n=4791$) (Additional file 5: Table S3). Both *P.*



falciparum and *P. vivax* imported from Africa had an increasing annual trend and seasonal fluctuations during 2011–2016 (Fig. 5). However, the rate of cases imported from Southeast Asia showed an annual downwards trend with a wide seasonal amplitude of monthly counts. Moreover, compared with autochthonous cases, a strong male predominance (17:1 vs 2:1) and a higher proportion (95% vs 58%) of population aged 15–45 years were found in imported cases (Fig. 1b, c). Most imported cases were Chinese (94%) and migrant workers (80%), and Chinese cases had a longer stay (median 324 days; interquartile range [IQR] 168–547) in Africa than cases from South and Southeast Asia (120 days; 59–240).

There were 921 origin–destination routes of malaria importation from malaria endemic countries into provinces in mainland China, with a median of four imported cases (IQR 1–12) of each route in 2011–2016. Myanmar (21% cases), Ghana (12%), and Angola (10%) were top three origins, and Yunnan (19%), Guangxi (12%), and Jiangsu (10%) provinces in China ranked as top three destinations (Fig. 6a). Four distinct communities have been identified by the modularity analysis (Fig. 6b and Additional file 6: Table S4). The first community included Yunnan Province and three neighbouring countries (Myanmar, Laos, and Thailand), and this community had the highest number of malaria cases imported from Southeast Asia (3406 cases), especially from Myanmar



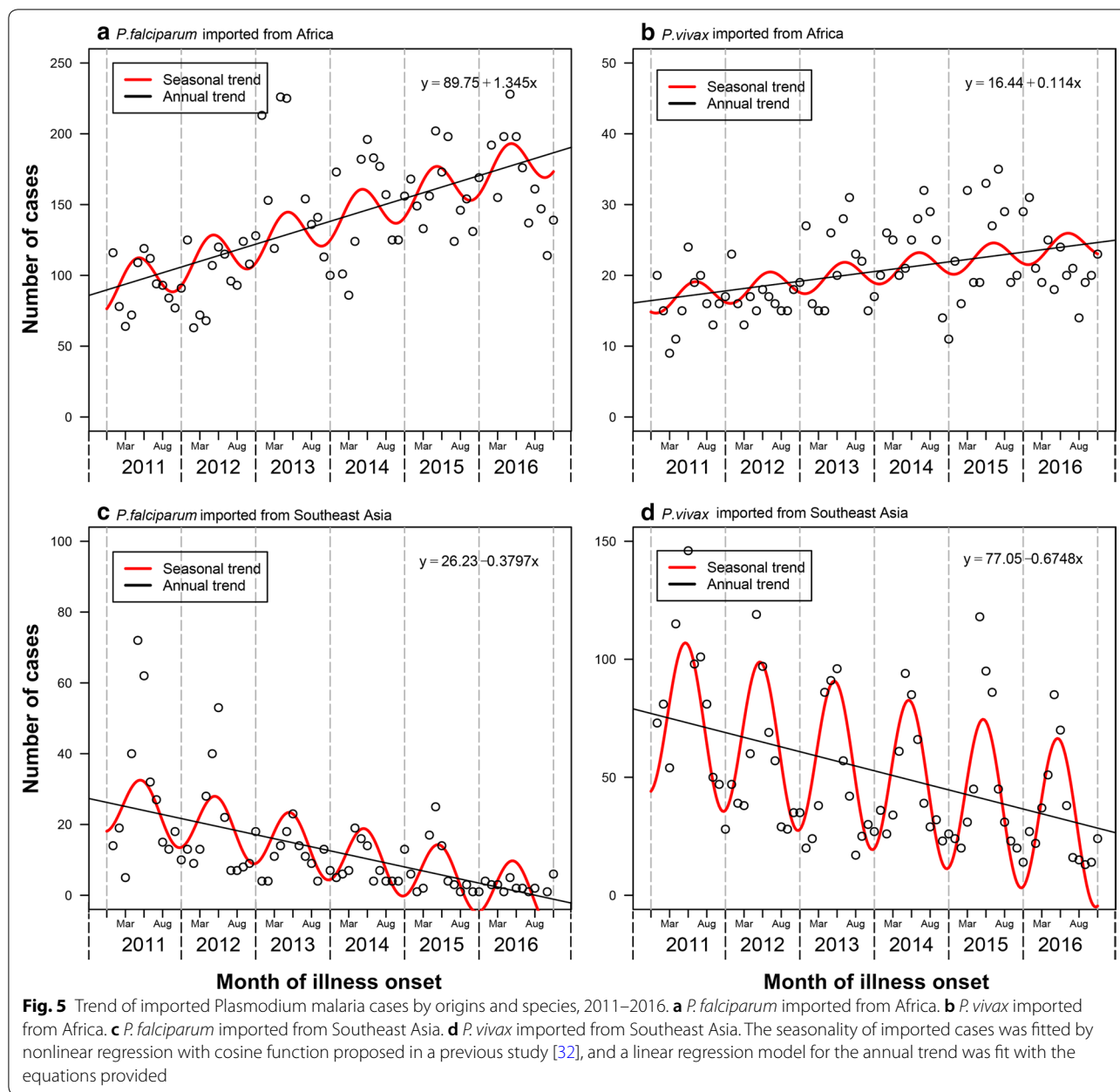
(3279 cases). The second community included Guangxi province and three African countries (Ghana, Cameroon, and Comoros) with Ghana-Guangxi link had the highest number of cases (1633) from Africa. The third community contained provinces in central and north-eastern China and neighbouring countries in East Asia and remote origin in Africa. The fourth community was constituted of provinces in north-western and southern China, neighbouring countries in South and Southeast Asia, and origin countries in western and central Africa, and Latin America.

Moreover, the geographic range of imported cases in China varied by origin and species (Fig. 3 and Additional file 7: Fig. S3): Yunnan province mainly imported malaria from Southeast Asia, in particular *P. vivax* from Myanmar; while Guangxi province in southern China, provinces in eastern China, and Sichuan in western

China, and metropolitans, i.e. Beijing, Shanghai, Guangzhou with international airport hubs had imported most malaria from Africa, especially for *P. falciparum*. The co-occurrence of autochthonous and imported malaria was mainly found in the border areas of Yunnan with malaria imported from Southeast Asia, and the provinces of central China with parasites imported from Africa (Fig. 2 and Additional file 4: Fig. S1).

Discussion

This study presents the changes in the epidemiological characteristics of autochthonous and imported malaria for China at the malaria elimination stage, and we found that malaria is on the verge of reaching the goal of elimination in China by 2020. The shrinking maps of autochthonous malaria since 2010 could partly be attributed to robust surveillance systems for rapidly detecting



individual cases and response by the ‘1-3-7’ strategy rolled out nationally [12]. The success might also be contributed by improved housing of the unprecedented urbanization in China and the extensive use of residual insecticides, which reduce contact with this mosquito and vectorial capacity [35, 36]. For instance, high coverage (>90%) of long-lasting insecticidal nets and indoor residual spraying has been achieved in southern China along the Myanmar border since 2010 [37]. Moreover, as China has an active role in the Greater Mekong Subregion (GMS) for eliminating malaria in all GMS countries

by 2030 [38], the progress in China is being a major contributor towards the ambition of global malaria eradication [39].

However, the residual malaria transmission in border areas, together with the importation of parasites, has posed a great threat to successfully eliminate malaria in China. The residual local transmission of *P. vivax* and *P. falciparum* malaria during the elimination stage might reflect the spatial variability and complexity of *Anopheles* vectors in China. For instance, the *Anopheles minimus sensu lato* and *Anopheles dirus sl*, which may have higher

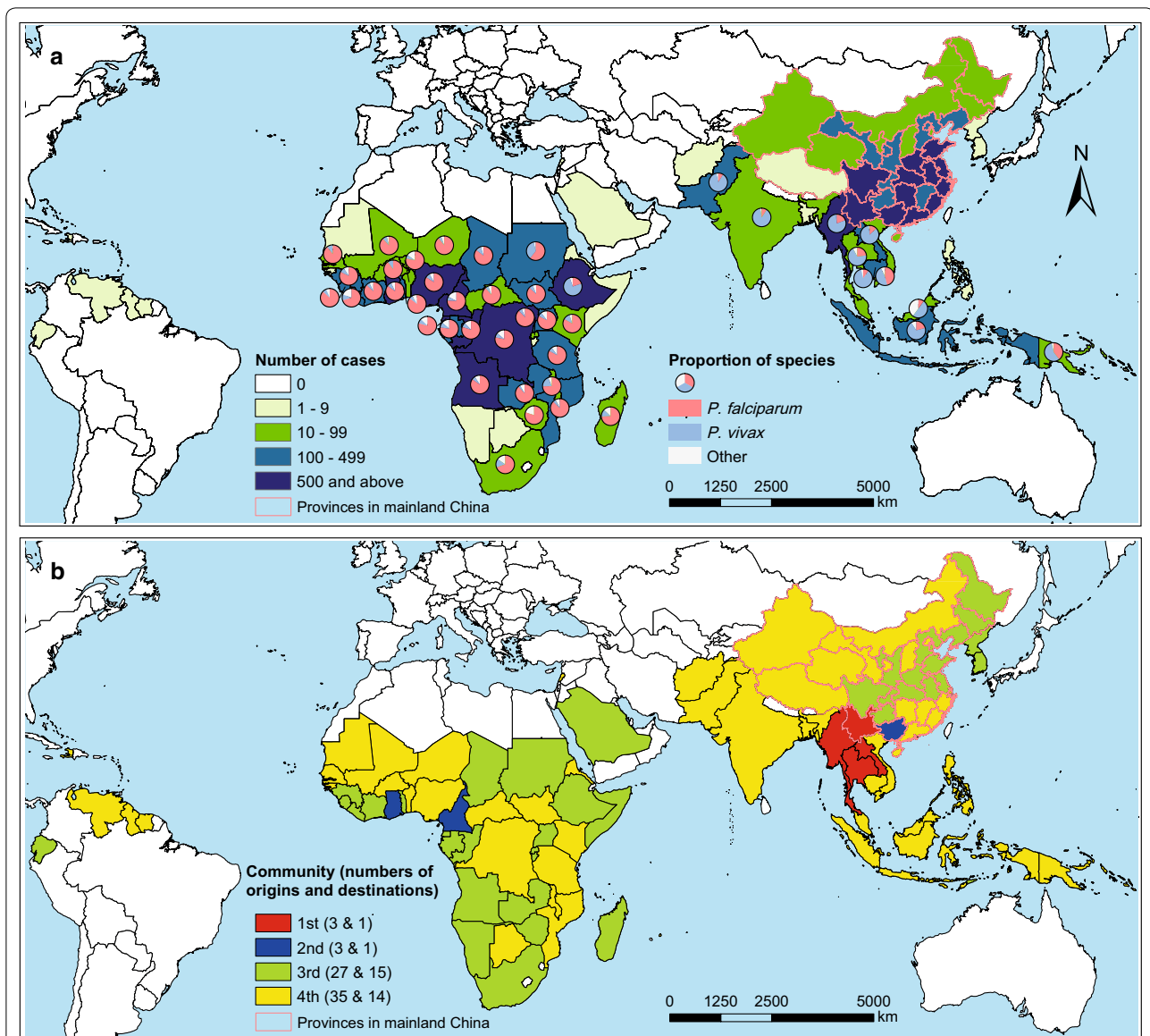


Fig. 6 Origin-destination networks and communities of malaria importation into China, 2011–2016. **a** The numbers and species of malaria imported from origins (68 countries) into destinations (31 provinces) in mainland China. **b** Four communities of the malaria importation networks. The proportion of *Plasmodium* species are presented for countries with ≥ 10 cases

capacity to transmit malaria, are the dominant vectors in Yunnan province, southern parts of Tibet, and Hainan Island [26]. Moreover, climate plays an important role in vector distribution and capacity of malaria transmission [40–42]. A warming climate may potentially expand the environmentally suitable area for malaria vectors, leading to malaria resurgence [43]. For example, the resurgence of malaria occurred in central China between 2001 and 2006, which might be attributed to the increasing vectorial capacity and the basic reproductive rate of *An. sinensis* caused by the changing meteorological factors [7,

8]. Therefore, strategies to achieve and maintain malaria elimination in China also need to account for potential changes in vector species, distribution and receptivity in regions with historical malaria transmission.

The magnitude of imported malaria cases are a function of several factors including the transmission intensity in origins, the volume of travellers, the activities undertaken in the location, with some demographic groups have substantially higher infection rates [44]. For instance, malaria imported to North America and Europe is often reported in migrants returning from

visiting friends and relatives in origin countries. However, the Chinese labours returning China have mainly contributed to the increasing importation of malaria into China. Lai et al. [27] have explored the driving factors of *P. falciparum* malaria importation from Africa to China, and found that the endemicity of malaria in originates and investment from China had stronger correlations with the magnitude of malaria importation, comparing to total volume of travellers. Some specific investment, e.g. resource extraction and infrastructure sectors, might have driven the huge number of Chinese workers into the regions with intensive transmission in Africa [15, 16, 45].

Moreover, the modularity analysis is of importance for understanding the structure and function of malaria importation networks [44, 46]. By mapping communities on the imported malaria network defined here, we identified groups of countries that show strong links in terms of movements of infected travellers. Certain routes from endemic countries to provinces of China carry substantially more infections than others, with evidence of tight couplings that reflect historical, culture, geographic, or economic ties [16, 27, 46], e.g. the first and second communities (Fig. 6). However, the huge groups of third and fourth communities might related to the relative homogeneity of the connections between origins and destinations within the same group. These communities of countries can serve to guide surveillance, develop mitigation strategies. For instance, health education could target to Chinese travellers, especially migration workers, to promote health protection behaviours when they travel in endemic areas.

Additionally, the decrease in the number of imported cases from Southeast Asia into China might be attributed to the decreasing endemicity of malaria in Southeast Asia in the last decade, even though there are increasing Chinese travellers from Southeast Asia into China in the last decades, with the volume of airline travellers from Southeast countries into China nearly quadrupled from 3.6 million in 2005 to 3.8 million in 2015 [47]. Therefore, China should also help the control and elimination of malaria in Africa and neighbouring countries in Asia, which in turn will reduce the importation risk of malaria into China.

To maintain malaria-free status in areas where malaria transmission has been interrupted, the main challenge of these susceptible areas is to prevent re-introduction by imported parasites. The tight coupling of locations highlights risks for secondary transmission following imported cases. For instance, the importation and autochthonous transmission of *P. vivax* have been presented in the regions along the China–Myanmar border, considering the similar climate and natural

environment and vectors [48, 49]. Moreover, the importation of parasites may also introduce the drug-resistance malaria into China, and a longitudinal surveillance of drug resistance in *P. falciparum* along the China–Myanmar border revealed the persistent circulation of multidrug resistant parasites [50]. Surveillance systems need to be well planned and managed to ensure timely case detection and prompt response to prevent and interrupt onward transmission in China [49]. Regarding to the high-risk border areas in southwest China, it is vital to stick to the ‘1-3-7’ approach to promote and maintain the malaria elimination along the border [51].

There are some limitations in this study. First, the quality of data might be influenced by the key steps in public health surveillance, including availability of healthcare, the accuracy of diagnosis, accessibility of laboratory tests, and the underreporting of imported malaria due to a health worker not thinking of testing for malaria [20]. Second, it was also possible that passive data were biased toward the identification and reporting of imported (rather than local) malaria if health workers preferentially tested individuals with travel history, especially for those who travelled abroad in short-term period, but biologically their infection could not have been obtained during that time given the incubation period. Third, the places where local transmission persisted longest might be also accounted for many factors, not only the vector species and density, but also the number of imported cases, control measure and case management, urbanization, and ecological changes. However, the driving factors of malaria importation and local transmission were not quantified in this study.

Conclusion

The results of this study illustrate the changing epidemiology of autochthonous and imported malaria in China with the significant progress made towards elimination, but the foreseeable challenges of residual autochthonous transmission and imported parasites are also highlighted. Strong surveillance and response systems need to be maintained to monitor residual transmission and introduced risk in susceptible areas. Additionally, as only a few countries in Africa and southeast Asia are expected to eliminate malaria by 2020 [1, 39], China should also take the responsibility to help the control and elimination of malaria in Africa and Southeast Asia, which in turn will consolidate the achievement of malaria elimination in China and contribute to global malaria eradication [52].

Additional files

Additional file 1: Table S1. The list of variables in the individual dataset of malaria cases, 2011–2016.

Additional file 2: Table S2. Characteristics of *Plasmodium* malaria cases reported in mainland China, 2011–2016.

Additional file 3: Fig. S1. Geographic distribution of autochthonous and imported malaria by county in China, 2012–2015.

Additional file 4: Fig. S2. Distribution of autochthonous *Plasmodium* malaria and *Anopheles* mosquitoes in China.

Additional file 5: Table S3. Characteristics of *Plasmodium* malaria cases imported from Africa and Southeast Asia into mainland China, 2011–2016.

Additional file 6: Table S4. The community of origin–destination networks of malaria imported into mainland China, 2011–2016.

Additional file 7: Fig. S3. Geographic distribution of imported *Plasmodium* malaria in mainland China by origins, 2011–2016. (A) All imported cases. (B) Cases imported from Africa. (C) Cases imported from southeast Asia. (D) Cases imported from other regions. To visualize the geographic distribution of imported cases based on the location of illness onset, density maps were created and smoothed by kernel density estimation at a spatial resolution of 0.083333 decimal degrees per pixel (approx. 10 km at the equator).

Authors' contributions

SL and ZL designed the study. SL collected data, finalised the analysis, wrote the manuscript, and interpreted the findings. JS, SZ, JY, LW and YZ collected and analysed data and interpreted the findings. NWR, IR, AT and ZL interpreted the findings and commented on and revised drafts of the manuscript. All authors read and approved the final manuscript.

Author details

¹ WorldPop, School of Geography and Environmental Science, University of Southampton, Southampton, UK. ² Division of Infectious Disease, Key Laboratory of Surveillance and Early-Warning on Infectious Disease, Chinese Center for Disease Control and Prevention, Beijing, China. ³ School of Public Health, Fudan University, Key Laboratory of Public Health Safety, Ministry of Education, Shanghai, China. ⁴ Flowminder Foundation, Stockholm, Sweden. ⁵ MOH Key Laboratory of Systems Biology of Pathogens and Christophe Mérieux Laboratory, CAMS-Fondation Mérieux, Institute of Pathogen Biology, Chinese Academy of Medical Sciences & Peking Union Medical College, Beijing, China. ⁶ Department of Infectious Disease Epidemiology, Imperial College London, London, UK.

Acknowledgements

We are grateful to the staff members at county-, prefecture-, and provincial-level Centers for Disease Control and Preventions for providing assistance with field investigation, administration and data collection in China.

Competing interests

The authors declare that they have no competing interests.

Availability of data and materials

All data are available from the authors upon reasonable request.

Consent for publication

Not applicable.

Ethics approval and consent to participate

It was determined by the National Health and Family Planning Commission, China, that the collection of malaria case reports was part of continuing public health surveillance of a notifiable infectious disease. The ethical clearance of collecting and using second-hand data from the surveillance was also granted by the institutional review board of the University of Southampton, UK (No. 18152). All data were supplied and analysed in an anonymous format, without access to personal identifying information.

Funding

This study was supported by the grants from the Ministry of Science and Technology of China (2016ZX10004222-009, 2018ZX10713001, 2012ZX10004-201) and the National Natural Science Fund of China (No. 81773498). A.J.T. is supported by funding from the Bill & Melinda Gates Foundation (OPP1106427, 1032350, OPP1134076, OPP1094793), the Clinton Health Access Initiative, the UK Department for International Development (DFID) and the Wellcome Trust (106866/Z/15/Z, 204613/Z/16/Z). The sponsors of the study had no role in the study design, data collection, data analysis, data interpretation, writing of the report, or the decision to publish. The views expressed here are those of the authors and do not necessarily represent the policy of institutions with which the authors are affiliated.

Publisher's Note

Springer Nature remains neutral with regard to jurisdictional claims in published maps and institutional affiliations.

Received: 20 December 2018 Accepted: 18 March 2019

Published online: 29 March 2019

References

- WHO. World malaria report 2017. Geneva: World Health Organization; 2017.
- WHO. World malaria report 2016. Geneva: World Health Organization; 2016.
- WHO. World malaria report 2015. Geneva: World Health Organization; 2015.
- WHO. World Malaria Report 2018. Geneva: World Health Organization; 2018.
- National Health and Family Planning Commission of China. Action Plan of China Malaria Elimination (2010–2020) 2010 <http://www.nhfpc.gov.cn/jkj/s5873/201005/f84f1c4b0f32420990d23b65a88e2d87.shtml>. Accessed 6 October 2016.
- Zhou ZJ. The malaria situation in the People's Republic of China. Bull World Health Organ. 1981;59:931–6.
- Zhang W, Wang L, Fang L, Ma J, Xu Y, Jiang J, et al. Spatial analysis of malaria in Anhui province, China. Malar J. 2008;7:206.
- Zhou SS, Huang F, Wang JJ, Zhang SS, Su YP, Tang LH. Geographical, meteorological and vectorial factors related to malaria re-emergence in Huang-Huai River of central China. Malar J. 2010;9:337.
- Zhang Q, Lai S, Zheng C, Zhang H, Zhou S, Hu W, et al. The epidemiology of *Plasmodium vivax* and *Plasmodium falciparum* malaria in China, 2004–2012: from intensified control to elimination. Malar J. 2014;13:419.
- WHO. Global technical strategy for malaria 2016–2030. Geneva: World Health Organization; 2015.
- Chinese Center for Disease Control and Prevention. Technical Scheme of China Malaria Elimination. 2011 <http://www.chinacdc.cn/tzgg/201109/P020110906378403678170.doc>. Accessed 10 May 2016.
- Cao J, Sturrock HJ, Cotter C, Zhou S, Zhou H, Liu Y, et al. Communicating and monitoring surveillance and response activities for malaria elimination: China's "1-3-7" strategy. PLoS Med. 2014;11:e1001642.
- National Health Commission of the People's Republic of China. Transcript of the press conference on 24 April 2018. 2017 <http://www.nhfpc.gov.cn/zhuz/xwfb/201804/e3d42235bc8b4e4ba4805d610bcf42a3.shtml>. Accessed 24 April 2018.
- Zhou S, Li Z, Cotter C, Zheng C, Zhang Q, Li H, et al. Trends of imported malaria in China 2010–2014: analysis of surveillance data. Malar J. 2016;15:39.
- Li Z, Zhang Q, Zheng C, Zhou S, Sun J, Zhang Z, et al. Epidemiologic features of overseas imported malaria in the People's Republic of China. Malar J. 2016;15:141.
- Liu Y, Hsiang MS, Zhou H, Wang W, Cao Y, Gosling RD, et al. Malaria in overseas labourers returning to China: an analysis of imported malaria in Jiangsu Province, 2001–2011. Malar J. 2014;13:29.
- Hu T, Liu YB, Zhang SS, Xia ZG, Zhou SS, Yan J, et al. Shrinking the malaria map in China: measuring the progress of the National Malaria Elimination Programme. Infect Dis Poverty. 2016;5:52.

18. World Health Organization. WHO certifies that Uzbekistan has eliminated malaria. 2018 <https://www.who.int/malaria/news/2018/uzbekistan-certified-malaria-free/en/>. Accessed 13 December 2018.
19. Danis K, Baka A, Lenglet A, Van Bortel W, Terzaki I, Tseroni M, et al. Autochthonous *Plasmodium vivax* malaria in Greece, 2011. *Euro Surveill*. 2011;16:e19993.
20. Sun J-L, Zhou S, Geng Q-B, Zhang Q, Zhang Z-K, Zheng C-J, et al. Comparative evaluation of the diagnosis, reporting and investigation of malaria cases in China, 2005–2014: transition from control to elimination for the national malaria programme. *Infect Dis Poverty*. 2016;5:111.
21. National Health and Family Planning Commission of China. Diagnostic criteria for malaria (WS 259-2006). 2006 <http://www.nhfpc.gov.cn/zwgkz/s9499/201410/d29f0a078dd143f8b6374ed23dc40400.shtml>. Accessed 24 May 2016.
22. Johnston SP, Pieniazek NJ, Xayavong MV, Slemenda SB, Wilkins PP, da Silva AJ. PCR as a confirmatory technique for laboratory diagnosis of malaria. *J Clin Microbiol*. 2006;44:1087–9.
23. Lai S, Li Z, Wardrop NA, Sun J, Head MG, Huang Z, et al. Malaria in China, 2011–2015: an observational study. *Bull World Health Organ*. 2017;95:564–73.
24. National Bureau of Statistics of China. National Data. 2016 <http://data.stats.gov.cn/english/index.htm>. Accessed 20 April 2016.
25. Silverman BW. Density estimation for statistics and data analysis. London; New York: Chapman and Hall; 1986.
26. Sinka ME, Bangs MJ, Manguin S, Rubio-Palis Y, Chareonviriyaphap T, Coetzee M, et al. A global map of dominant malaria vectors. *Parasit Vectors*. 2012;5:69.
27. Lai S, Wardrop NA, Huang Z, Bosco C, Sun J, Bird T, et al. *Plasmodium falciparum* malaria importation from Africa to China and its mortality: an analysis of driving factors. *Sci Rep*. 2016;6:39524.
28. Vincent DB, Jean-Loup G, Renaud L, Etienne L. Fast unfolding of communities in large networks. *J Stat Mech Theory Exp*. 2008;2008:P10008.
29. Newman ME. Analysis of weighted networks. *Phys Rev E Stat Nonlin Soft Matter Phys*. 2004;70:056131.
30. Fortunato S, Barthelemy M. Resolution limit in community detection. *Proc Natl Acad Sci USA*. 2007;104:36–41.
31. Lambiotte R, Delvenne J-C, Barahona M: Laplacian Dynamics and Multi-scale Modular Structure in Networks. In arXiv e-prints 2008.
32. Naumova EN, Jagai JS, Matyas B, DeMaria A Jr, MacNeill IB, Griffiths JK. Seasonality in six enterically transmitted diseases and ambient temperature. *Epidemiol Infect*. 2007;135:281–92.
33. Population Division of the Department of Economic and Social Affairs in United Nations. World Population Prospects: The 2017 Revision, custom data acquired via website. 2017 <https://esa.un.org/unpd/wpp/DataQuery/>. Accessed 20 April 2018.
34. Bastian M, Heymann S, Jacomy M: Gephi: An Open Source Software for Exploring and Manipulating Networks. In: International AAAI Conference on Web and Social Media. North America 2009.
35. Wang RB, Zhang QF, Zheng B, Xia ZG, Zhou SS, Tang LH, et al. Transition from control to elimination: impact of the 10-year global fund project on malaria control and elimination in China. *Adv Parasitol*. 2014;86:289–318.
36. Flückiger M, Ludwig M. Malaria suitability, urbanization and persistence: evidence from China over more than 2000 years. *Eur Econom Rev*. 2017;92:146–60.
37. Wang D, Li S, Cheng Z, Xiao N, Cotter C, Hwang J, et al. Transmission risk from imported *Plasmodium vivax* malaria in the China–Myanmar border region. *Emerg Infect Dis*. 2015;21:1861–4.
38. WHO. Strategy for malaria elimination in the Greater Mekong Subregion (2015–2030). Geneva, World Health Organization; 2015 http://iris.wpro.who.int/bitstream/handle/10665.1/10945/9789290617181_eng.pdf;sequence=1. Accessed 11 November 2016.
39. Newby G, Bennett A, Larson E, Cotter C, Shretta R, Phillips AA, et al. The path to eradication: a progress report on the malaria-eliminating countries. *Lancet*. 2016;387:1775–84.
40. Guo C, Yang L, Ou CQ, Li L, Zhuang Y, Yang J, et al. Malaria incidence from 2005–2013 and its associations with meteorological factors in Guangdong, China. *Malar J*. 2015;14:116.
41. Xiang J, Hansen A, Liu Q, Tong MX, Liu X, Sun Y, et al. Association between malaria incidence and meteorological factors: a multi-location study in China, 2005–2012. *Epidemiol Infect*. 2018;146:89–99.
42. Ren Z, Wang D, Hwang J, Bennett A, Sturrock HJ, Ma A, et al. Spatial-temporal variation and primary ecological drivers of *Anopheles sinensis* human biting rates in malaria epidemic-prone regions of China. *PLoS ONE*. 2015;10:e0116932.
43. Ren Z, Wang D, Ma A, Hwang J, Bennett A, Sturrock HJ, et al. Predicting malaria vector distribution under climate change scenarios in China: challenges for malaria elimination. *Sci Rep*. 2016;6:20604.
44. Tatem AJ, Jia P, Ordanovich D, Falkner M, Huang Z, Howes R, et al. The geography of imported malaria to non-endemic countries: a meta-analysis of nationally reported statistics. *Lancet Infect Dis*. 2017;17:98–107.
45. Li Z, Yang Y, Xiao N, Zhou S, Lin K, Wang D, et al. Malaria imported from Ghana by returning gold miners, China, 2013. *Emerg Infect Dis*. 2015;21:864–7.
46. Huang Z, Tatem AJ. Global malaria connectivity through air travel. *Malar J*. 2013;12:269.
47. Lai SJ, Johansson MA, Yin WW, Wardrop NA, van Panhuis WG, Wesolowski A, et al. Seasonal and interannual risks of dengue introduction from South-East Asia into China, 2005–2015. *PLoS Negl Trop Dis*. 2018;12:e0006743.
48. Bi Y, Yu W, Hu W, Lin H, Guo Y, Zhou XN, et al. Impact of climate variability on *Plasmodium vivax* and *Plasmodium falciparum* malaria in Yunnan Province, China. *Parasit Vectors*. 2013;6:357.
49. Li S, Yin S, Wang J, Li X, Feng J. Shifting from control to elimination: analysis of malaria epidemiological characteristics in Tengchong County around China–Myanmar border, 2005–2014. *Malar J*. 2016;15:45.
50. Bai Y, Zhang J, Geng J, Xu S, Deng S, Zeng W, et al. Longitudinal surveillance of drug resistance in *Plasmodium falciparum* isolates from the China–Myanmar border reveals persistent circulation of multidrug resistant parasites. *Int J Parasitol Drugs Drug Resist*. 2018;8:320–8.
51. Wang D, Cotter C, Sun X, Bennett A, Gosling RD, Xiao N. Adapting the local response for malaria elimination through evaluation of the 1-3-7 system performance in the China–Myanmar border region. *Malar J*. 2017;16:54.
52. Chen J, Xiao N. Chinese action towards global malaria eradication. *Lancet*. 2016;388:959.

Ready to submit your research? Choose BMC and benefit from:

- fast, convenient online submission
- thorough peer review by experienced researchers in your field
- rapid publication on acceptance
- support for research data, including large and complex data types
- gold Open Access which fosters wider collaboration and increased citations
- maximum visibility for your research: over 100M website views per year

At BMC, research is always in progress.

Learn more biomedcentral.com/submissions

