

Research

Feike J Loots, Marleen Smits, Rogier M Hopstaken, Kevin Jenniskens, Fleur H Schroeten, Ann van den Bruel, Alma C van de Pol, Jan Jelrik Oosterheert, Hjalmar Bouma, Paul Little, Michael Moore, Sanne van Delft, Douwe Rijpsma, Joris Holkenborg, Bas CT van Bussel, Ralph Laven, Dennis CJJ Bergmans, Jacobien J Hoogerwerf, Gideon HP Latten, Eefje GPM de Bont, Paul Giesen, Annemarie den Harder, Ron Kusters, Arthur RH van Zanten and Theo JM Verheij

New clinical prediction model for early recognition of sepsis in adult primary care patients:

a prospective diagnostic cohort study of development and external validation

Abstract

Background

Recognising patients who need immediate hospital treatment for sepsis while simultaneously limiting unnecessary referrals is challenging for GPs.

Aim

To develop and validate a sepsis prediction model for adult patients in primary care.

Design and setting

This was a prospective cohort study in four out-of-hours primary care services in the Netherlands, conducted between June 2018 and March 2020.

Method

Adult patients who were acutely ill and received home visits were included. A total of nine clinical variables were selected as candidate predictors, next to the biomarkers C-reactive protein, procalcitonin, and lactate. The primary endpoint was sepsis within 72 hours of inclusion, as established by an expert panel. Multivariable logistic regression with backwards selection was used to design an optimal model with continuous clinical variables. The added value of the biomarkers was evaluated. Subsequently, a simple model using single cut-off points of continuous variables was developed and externally validated in two emergency department populations.

Results

A total of 357 patients were included with a median age of 80 years (interquartile range 71–86), of which 151 (42%) were diagnosed with sepsis. A model based on a simple count of one point for each of six variables (aged >65 years; temperature >38°C; systolic blood pressure ≤110 mmHg; heart rate >110/min; saturation ≤95%; and altered mental status) had good discrimination and calibration [C-statistic of 0.80 [95% confidence interval = 0.75 to 0.84]; Brier score 0.175]. Biomarkers did not improve the performance of the model and were therefore not included. The model was robust during external validation.

Conclusion

Based on this study's GP out-of-hours population, a simple model can accurately predict sepsis in acutely ill adult patients using readily available clinical parameters.

Keywords

after-hours care; clinical decision rule; diagnosis; general practice; sepsis; vital signs.

INTRODUCTION

Early recognition of sepsis is the critical factor influencing patient outcome.^{1–4} Protocols for the early identification of sepsis to trigger the administration of intravenous antibiotics successfully decreased sepsis-related mortality in emergency departments (EDs).^{5,6} In patients with community-acquired sepsis, GPs are often

the first responding healthcare providers assessing patients.^{7,8} GPs' recognition of sepsis and decision to refer a patient to the hospital is essential for adequate treatment. At the same time GPs have an essential role in preventing unnecessary referrals as hospital admission in itself can have a negative impact, especially in patients who are older or frail.

FJ Loots (ORCID 0000-0003-4984-0484); MD, PhD candidate; **K Jenniskens**, PhD, assistant professor; **FH Schroeten**, MSc, medical student; **AC van de Pol**, MD, PhD, assistant professor and GP; **TJM Verheij**, PhD, MD, professor of general practice, Julius Center for Health Sciences and Primary Care, University Medical Centre Utrecht, Utrecht University, Utrecht, the Netherlands. **M Smits** (ORCID 0000-0001-9073-5382); PhD, senior researcher; **P Giesen**, PhD, MD, GP, Radboud Institute for Health Sciences, Scientific Center for Quality of Healthcare, Radboud University Medical Center, Nijmegen, the Netherlands. **RM Hopstaken** (ORCID 0000-0002-8357-5197); MD, PhD, GP, Star-shl Diagnostic Centres, Bredaseweg, the Netherlands. **A van den Bruel**, PhD, MD, professor of general practice, Department of Public Health and Primary Care, Katholieke Universiteit, Leuven, Belgium. **JJ Oosterheert**, PhD, MD, associate professor and internist-infectiologist, Department of Internal Medicine and Infectious Diseases, University Medical Centre Utrecht, Utrecht University, Utrecht, the Netherlands. **H Bouma**, PhD, MD, assistant professor, internist acute medicine, pharmacologist, and immunologist, Department of Clinical Pharmacy and Pharmacology and Department of Internal Medicine, University Medical Center Groningen, University of Groningen, Groningen, the Netherlands. **P Little**, PhD, MD, professor of general practice; **M Moore**, FRCGP, professor of general practice, Faculty of Medicine, University of Southampton, Southampton, UK. **S van Delft**, PhD, innovation manager, Unilabs Netherlands, Enschede, the Netherlands. **D Rijpsma**, MD, emergency physician; **J Holkenborg**, MD, emergency physician, Rijnstate Hospital, Arnhem, the Netherlands. **BCT van Bussel** (ORCID 0000-0003-1621-7848); PhD, MD, internist-intensivist, Department of Intensive Care Medicine, Maastricht University Medical Centre; Care and Public Health Research Institute, Maastricht University, Maastricht, the Netherlands. **R Laven**, MD, GP, General Practice Proosdijveld, Beek, the Netherlands. **DCJJ Bergmans** (ORCID 0000-0002-4224-6462); PhD, MD, internist-intensivist, Department of Intensive Care Medicine, Maastricht

University Medical Centre; School of Nutrition and Translational Research in Metabolism, Maastricht University, Maastricht, the Netherlands. **JJ Hoogerwerf**, PhD, MD, internist acute medicine, Department of Internal Medicine and Radboud Centre for Infectious Diseases, Radboud University Medical Centre, Nijmegen the Netherlands. **GHP Latten** (ORCID: 0000-0002-41110-5242); MD, emergency physician, Emergency Department, Zuyderland Medical Centre, Heerlen; Department of Family Medicine, Care and Public Health Research Institute, Maastricht University, Maastricht, the Netherlands. **EGPM de Bont**, PhD, MD, assistant professor and GP, Department of Family Medicine, Care and Public Health Research Institute, Maastricht University, Maastricht, the Netherlands. **A den Harder**, PhD, MD, hospitalist, Jeroen Bosch Hospital, Den Bosch, the Netherlands. **R Kusters**, PhD, professor and specialist laboratory medicine, Clinical Chemistry and Haematology, Jeroen Bosch Hospital, Den Bosch; Technology and Services Research, Technical Medical Centre, University of Twente, Enschede, the Netherlands. **ARH van Zanten**, PhD, MD, professor and internist-intensivist, Gelderse Vallei Hospital, Department of Intensive Care, Ede; Division of Human Nutrition and Health, Wageningen University and Research, Wageningen, the Netherlands.

Address for correspondence

Feike J Loots, Julius Centre for Health Sciences and Primary Care, University Medical Centre Utrecht, Utrecht University, Heidelberglaan 100, 3508 GA Utrecht, the Netherlands.

Email: fj.loots@umcutrecht.nl

Twitter: @theo_verheij

Submitted: 8 September 2021; Editor's response: 19 October 2021; final acceptance: 4 January 2022.

©The Authors

This is the full-length article (published online 20 Apr 2022) of an abridged version published in print. Cite this version as: **Br J Gen Pract 2022; DOI: <https://doi.org/10.3399/BJGP.2021.0520>**

How this fits in

Early recognition and treatment of sepsis are essential to improve patient outcomes. Scoring systems such as the systemic inflammatory response syndrome (SIRS), quick Sequential Organ Failure Assessment (qSOFA), and National Early Warning Score (NEWS) are used in the hospital setting for suspected sepsis but are not validated in the primary care setting. This study presents a newly developed simple score-based model that may help to predict sepsis in adult primary care patients. Biomarkers (lactate, C-reactive protein, and procalcitonin) and respiratory rate were not incorporated in this model as the added value was not clinically relevant. Before widely advocating the new model, effects on referrals and patient outcomes should be prospectively evaluated.

Currently GPs' decisions to refer patients with severe infections to the hospital are based on an intuitive interpretation of signs, symptoms, and general impression of a patient.^{9,10} For primary care, up until now, there has been no diagnostic model available to support decisions to diagnose and manage sepsis. Clinical scores used in hospitals, like the quick Sequential Organ Failure Assessment (qSOFA),¹¹ systemic inflammatory response syndrome (SIRS),¹² or National Early Warning Score (NEWS)¹³ are not validated in primary care.

This study aimed to develop and validate a first diagnostic clinical model for the early recognition of sepsis in adults presenting in primary care. Ideally, patients with sepsis are identified early in the course of the disease and therefore the model will be designed to predict sepsis to be present within 72 hours. Immediate hospital referral is expected to improve outcome in these patients. This study investigated clinical signs, symptoms, and biomarkers potentially available at the bedside.

METHOD

Setting

Patients were enrolled between June 2018 and March 2020 at four participating out-of-hours primary care services in the central and south of the Netherlands (Ede, Den Bosch, Uden, and Oss). The combined area covers roughly 800 000 inhabitants in a mixed urban, suburban, and rural area. In the Netherlands, out-of-hours primary care is organised in large-scale primary care services serving between 50 000 and 400 000 inhabitants.¹⁴ Telephone triage is

used to decide who needs to come to the clinic and who is visited at home. Only patients who received home visits were included in the study as these patients are usually more severely ill than other primary care populations. All participants (or legally authorised representatives of incapacitated patients) gave written informed consent for the study. The protocol for this study has been previously published¹⁵ and can be consulted for further details.

Patients

Acutely ill adult (aged ≥ 18 years) patients with fever, confusion, general deterioration, or otherwise suspected severe infection were eligible for inclusion. Patients were excluded if any of the following criteria were present:

- non-infectious diagnosis suspected as the cause of the acute complaints, for example, myocardial infarction or stroke;
- hospitalisation within 7 days before the home visit;
- a condition present requiring secondary care assessment regardless of the severity of infection, for example, neutropenic fever; and
- terminal illness or other reason not to be referred to the hospital, despite the presence of a life-threatening condition.

Candidate predictors

Based on other prediction models, sepsis guidelines, and triage protocols,^{11–13,16,17} nine clinical parameters were selected as candidate predictors. These included: age; tympanic temperature; systolic blood pressure; peripheral oxygen saturation; heart rate; respiratory rate; mental status (normal or altered); rapid progression of illness (yes/no); and rigors (yes/no). Furthermore, three biomarkers were selected: lactate; C-reactive protein (CRP); and procalcitonin (PCT).

Procedures

The GP assessed eligibility for inclusion at the home visit. Drivers who accompanied the GPs during the home visit were equipped with portable monitoring devices (Philips Intellivue MP2 or X2) to measure blood pressure, peripheral oxygen saturation, heart rate, and respiratory rate. All vital signs and other clinical candidate predictors were registered in a case report form on site. The GP also rated the perceived likelihood of sepsis on a scale from 0–10. Either the GP or an on-call laboratory assistant obtained venous blood samples directly after inclusion. Lactate

was measured by point-of-care testing (StatStrip Xpress lactate, Nova Biomedical), as lactate cannot be measured reliably from stored blood samples.¹⁸ The venous blood samples were stored at -70°C for later measurements of CRP and PCT. All patients received care as usual.

Outcome definitions and assessment

Three expert panels were created, each consisting of one GP, one emergency physician, and one intensivist (or acute care internist). These expert panels established the primary outcome: 'sepsis within 72 hours of inclusion', using all relevant information from medical records, per Sepsis-3 definition.¹⁹ The operational definition of sepsis is the presence of infection and a SOFA score²⁰ at least two above the baseline. Cases were divided among the three panels, with 10% of all cases being evaluated by all three panels for inter-rater and inter-panel reliability. If panel members could not reach a consensus on the presence or absence of sepsis, the case was discussed in a face-to-face meeting until consensus was reached.

Secondary outcomes assessed by the expert panel included whether the infection was the cause of acute complaints (yes/no) and the need for hospital treatment (on a scale from 0–10). Furthermore, the presence or absence of an 'adverse outcome', defined as an intensive care unit (ICU) admission within 72 hours or death within 30 days of inclusion, was determined.

Statistical analysis

Baseline characteristics of the study population were described using the mean

and standard deviation for continuous variables with a normal distribution; and the median and interquartile range (IQR) for variables with a skewed distribution. Inter-rater and inter-panel reliability were assessed using Cohen's kappa for the primary outcome of sepsis.

Multiple imputations using multivariate imputation by chained equations (MICE) procedure^{21,22} were used to account for missing data. The regression coefficients and performance measures of the imputed datasets were pooled using Rubin's rules²³ and the total covariance matrix, respectively.

First, a multivariable logistic regression model was developed using all clinical parameters. Subsequently, lactate, CRP, and PCT were added to this clinical model. The linearity of the relationship between continuous variables and the log odds of sepsis was assessed. For non-linear relationships, a restricted cubic spline was used. Backward selection with $P < 0.157$ as selection criterion (based on the Akaike information criterion)^{24,25} was used to remove any non-informative clinical parameters and biomarkers. Subsequently, performance measures of the model with and without biomarkers were compared using predictors as continuous variables (hereafter referred to as the 'continuous model'). Variables included in this model were then dichotomised, creating a simplified model based on a simple count of the number of predictors. All cut-off points of vital signs used in NEWS were considered for the simplified model, and the model with the highest C-statistic (equal to the area under the receiver operating curve) was chosen as the final model.

Combined with previously described methods for imputing missing data and variable selection,²⁶ optimism was calculated to adjust for C-statistics of the continuous models using tenfold cross-validation. The calibration slope was used as a shrinkage factor for model regression coefficients and subsequently re-estimating the intercept.

Discrimination was evaluated using the C-statistic. Calibration was assessed by visual inspection of the calibration plots and by evaluating the calibration slope and Brier score. In addition, the calibration of external datasets was also assessed using the observed-to-expected (O/E) ratio as a measure for mean calibration. Percentiles of bootstrapped samples were used to calculate 95% confidence intervals (CIs) for performance measures. Performance measures of the continuous and simplified model were compared to each other, as well as to the performance of existing scoring systems, that is, SIRS, qSOFA, and NEWS,

Figure 1. Patient flow chart.

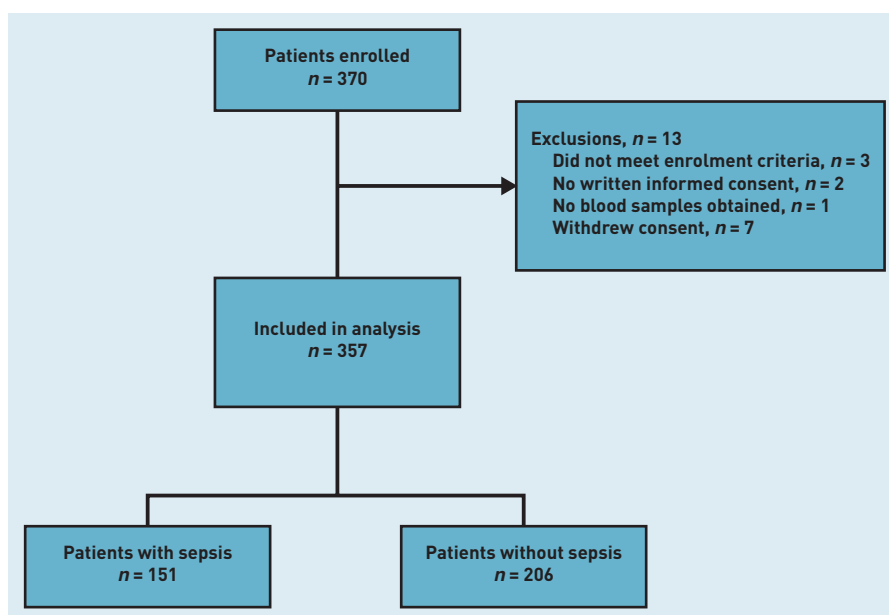


Table 1. Patient characteristics by sepsis diagnosis, N = 357

Characteristic	Patients with sepsis (n = 151)	Patients without sepsis (n = 206)
Demographics		
Age, years, median (IQR)	80 (74–85)	79 (68–86)
Sex, n (%)		
Male	93 (62)	123 (60)
Female	58 (38)	83 (40)
Comorbidities, n (%)		
Diabetes	55 (36)	49 (24)
COPD	22 (15)	40 (19)
Cardiac disease	63 (42)	59 (29)
Cerebrovascular accident	33 (22)	39 (19)
Malignancy	19 (13)	30 (15)
Chronic kidney disease	43 (28)	49 (24)
Dementia	25 (17)	18 (8.7)
Immunosuppressive use	6 (4.0)	7 (3.4)
Final diagnosis, n (%)		
Respiratory tract infection	61 (40)	74 (36)
Urinary tract infection	45 (30)	47 (23)
Abdominal infection	12 (7.9)	7 (3.4)
Skin/soft tissue infection	11 (7.3)	17 (8.3)
Infection with unknown source	11 (7.3)	25 (12)
Other source of infection	11 (7.3)	8 (3.9)
Non-infectious diagnosis	—	28 (14)
Candidate predictors		
Tympanic temperature, °C, mean (SD)	39.0 (0.7)	38.5 (1.0)
Systolic blood pressure, mmHg, mean (SD) ^a	135 (25)	139 (24)
Heart rate, beats/min, mean (SD)	100 (20)	96 (20)
Respiratory rate, breaths/min, mean (SD) ^a	26 (6)	23 (7)
Peripheral oxygen saturation, %, median (IQR) ^b	93 (90–95)	95 (93–97)
Altered mental status, n (%)	81 (54)	46 (22)
Rigors, n (%)	100 (66)	123 (60)
Rapid illness progression, yes, n (%)	127 (84)	144 (70)
Lactate, mmol/L, median (IQR) ^b	1.6 (1.1–2.1)	1.3 (0.9–1.7)
C-reactive protein, mg/L, median (IQR) ^c	85 (34–145)	57 (20–114)
Procalcitonin, ng/mL, median (IQR) ^d	0.25 (0.09–1.20)	0.08 (0.03–0.22)
Time to blood collection, minutes, median (IQR)	50 (26–65)	45 (15–65)
Secondary outcomes, n (%)		
Hospital admission	134 (89)	76 (37)
Length of stay, days, median (IQR)	5.2 (3.1–8.3)	4.5 (2.5–6.5)
ICU admission within 72 hours	11 (7.3)	1 (0.5)
30-day mortality	13 (8.6)	8 (3.9)

^aMissing, n = 1. ^bMissing, n = 2. ^cMissing, n = 6. ^dMissing, n = 13. COPD = chronic obstructive pulmonary disease. ICU = intensive care unit. IQR = interquartile range. SD = standard deviation.

and to the likelihood of sepsis (on a scale from 0–10) according to the GP on site.

R (version 4.0.5) package was used for the analyses.

Sensitivity analyses

Model performance for secondary outcomes was assessed to evaluate potential incorporation bias resulting from the use of the SOFA score (by the expert panel) as part of the sepsis definition, as well as for a more conservative calculation of the SOFA score (fewer SOFA points for decreased oxygen saturation and altered mental status).

External validation

Datasets from patients with suspected infections assessed in two Dutch EDs were used to test the external validity of both the continuous and simplified model. The C-statistic discrimination was assessed, and the continuous and simplified models were compared with NEWS. The calibration was assessed using calibration plots, as well as mean calibration and calibration slope. A more detailed description can be found in Supplementary Appendix S1.

RESULTS

Study population and outcome

In total, 357 patients were included for analysis (Figure 1). The median age was 80 years (IQR 71–86) and 61% were male (Table 1). The GPs referred 199 patients (56%) to the ED directly after inclusion, of which 188 (94%) were subsequently admitted to hospital. Of the 158 patients not referred immediately, 22 (14%) were admitted to hospital within the first 72 hours after inclusion (data not shown). Of the 357 patients included in the analysis, 12 (3.4%) were admitted to the ICU within 72 hours after inclusion, and overall 30-day mortality was 5.6%. The proportion of missing values was low for all candidate predictors, with the highest being 3.6% for PCT. A total of 151 patients (42%) had sepsis, according to the expert panel. Cohen's kappa, indicating the inter-rater reliability between members within the same panel, ranged between 0.57 and 0.76 (mean 0.68), and Cohen's kappa for inter-panel reliability ranged between 0.69 and 0.95 (mean 0.79) (see Supplementary Table S1). Table 1 shows a summary of the characteristics of patients with and without sepsis.

Prediction model development

Of the nine clinical candidate predictors, six were included in the continuous model after backward selection: aged >65 years; temperature >38°C; systolic blood pressure ≤110 mmHg; respiratory rate; peripheral oxygen saturation ≤95%; and mental status. Age was included as a restricted cubic spline with three knots. After correction for optimism, the continuous model without biomarkers had a C-statistic of 0.80 (95% CI = 0.75 to 0.84), a calibration slope of 0.86, and a Brier score of 0.181 (See Supplementary Table S2 for regression coefficients). The addition of the three biomarkers to this model resulted in lactate and PCT remaining after backward selection. However, the optimism corrected C-statistic of 0.80 was identical to the model without biomarkers. Therefore, no biomarkers were included in the final

Box 1. Simplified model of six variables, resulting in a score ranging between 0–6 points

Aged >65 years	1 point
Tympanic temperature >38 °C	1 point
Systolic blood pressure ≤110 mmHg	1 point
Heart rate >110 beats/minute	1 point
Peripheral oxygen saturation ≤95%	1 point
Altered mental status	1 point

continuous model. Analyses of individual biomarkers are shown in Supplementary Figure S1.

A simplified model was created through the dichotomisation of variables included in the continuous model (Box 1). Models without respiratory rate were also evaluated, as the respiratory rate is less feasible for GPs to perform. Heart rate showed collinearity with respiratory rate, and model performance did not decrease after substitution. Consequently, heart rate was used instead of respiratory rate in the final simplified model.

Discrimination of the simplified model (C-statistic of 0.80, 95% CI = 0.76 to 0.83) was nearly identical to the continuous model (Figure 2). Diagnostic accuracy measures

for the simplified model at different cut-off scores are presented in Table 2, distribution of the patients with and without sepsis are shown in Figure 3, and predicted rate of sepsis in Figure 4. The calibration of the simplified model was also similar to the continuous model (see Supplementary Figure S2). The use of multiple cut-off points for individual variables in the model, or grouping score categories, did not significantly improve performance.

Comparison with existing models

Performance of the continuous and simplified models was compared to SIRS, qSOFA, and NEWS (Table 3). NEWS showed similar performance compared to the simplified model with a C-statistic of 0.79 (95% CI = 0.75 to 0.83). SIRS and qSOFA had lower C-statistics of 0.66 (95% CI = 0.61 to 0.70) and 0.71 (95% CI = 0.66 to 0.75), respectively (Figure 5). The perceived probability of sepsis within 72 hours by the GP on site resulted in a C-statistic of 0.73 (95% CI = 0.67 to 0.78; data not shown). Brier scores for continuous and simplified models were lower, that is, better than SIRS, qSOFA, and NEWS.

Sensitivity analyses

The prediction of secondary endpoints (including an alternative sepsis definition using more restrictive calculation of the SOFA score) resulted in comparable performance results for the continuous model, simplified model, and NEWS for all analyses. C-statistics ranged between 0.7 and 0.8 for all outcomes, except for prediction of 'adverse outcome' (ICU admission <72 hours or 30-day mortality), where a C-statistic of 0.58 (95% CI = 0.51 to 0.66) was found for the continuous model, compared to 0.62 (95% CI = 0.53 to 0.69) for both the simplified model and NEWS (see Supplementary Table S3).

External validation

The first validation dataset (Dataset 1) was from a teaching hospital in the south of the Netherlands and previously published by Latten *et al.*⁷ The population consisted of 440 patients with a median age of 71 years, of whom 163 (37%) were diagnosed with sepsis (severe sepsis or septic shock according to the Sepsis-2 definitions).²⁷ A C-statistic of 0.80 (95% CI = 0.77 to 0.83) was found for the simplified model and 0.84 (95% CI = 0.80 to 0.87) for the continuous model. Calibration showed an O/E ratio of 1.4 for the simplified model and 1.5 for the continuous model.

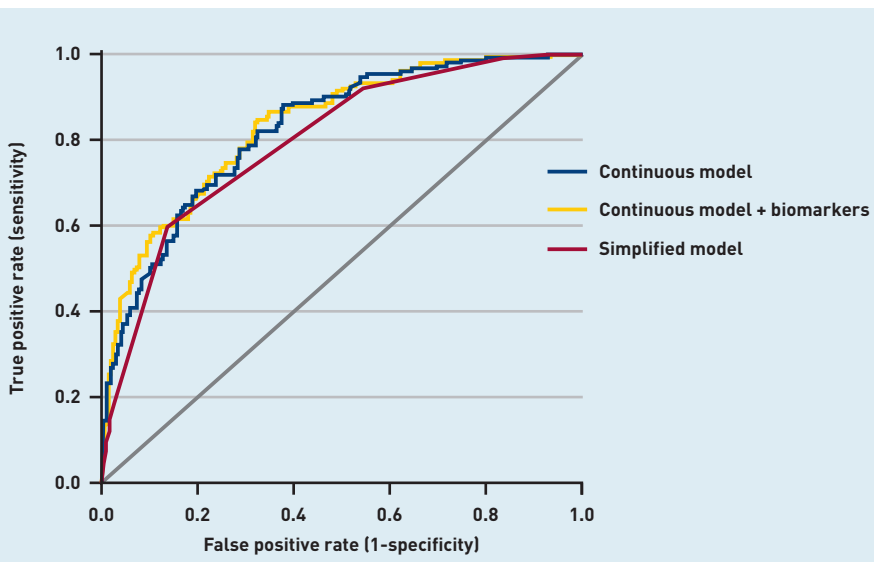
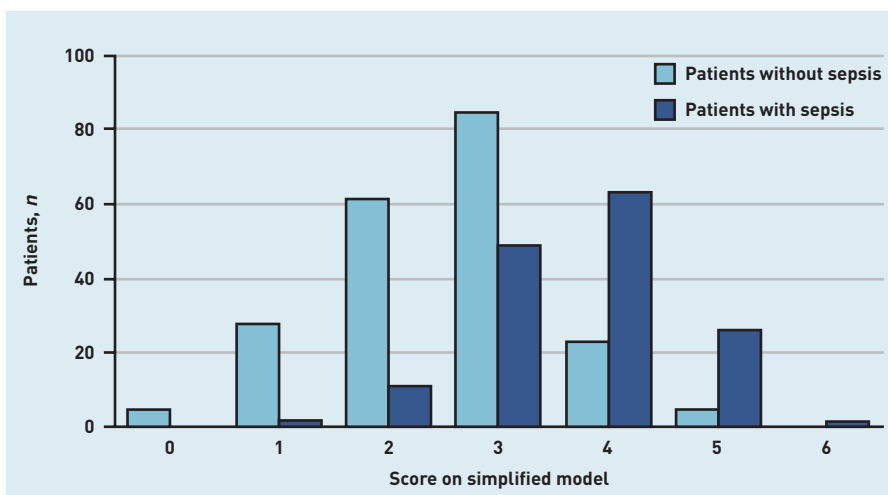


Figure 2. Receiver operating curves of the continuous model, continuous model + biomarkers (lactate and procalcitonin), and simplified model for sepsis outcome.

Figure 3. Number of patients with and without sepsis for all scores on the simplified model.



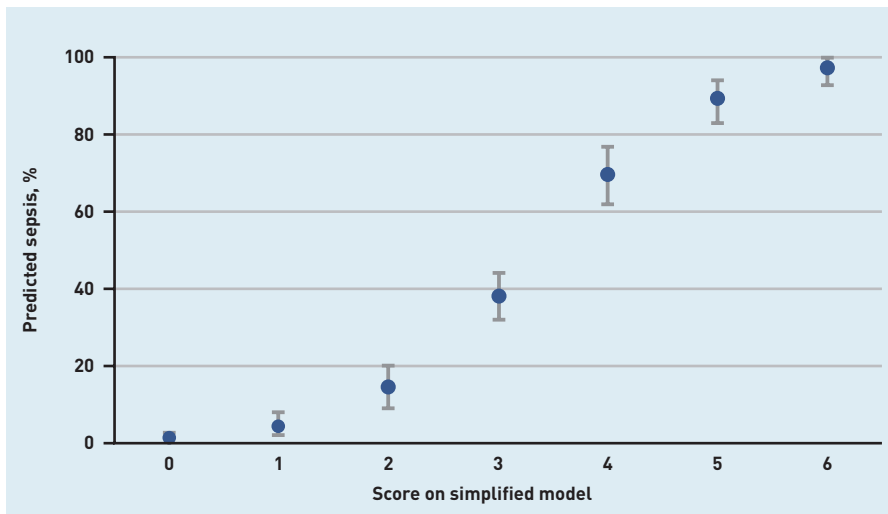


Figure 4. Predicted rate of sepsis with 95% confidence intervals for all scores on the simplified model.

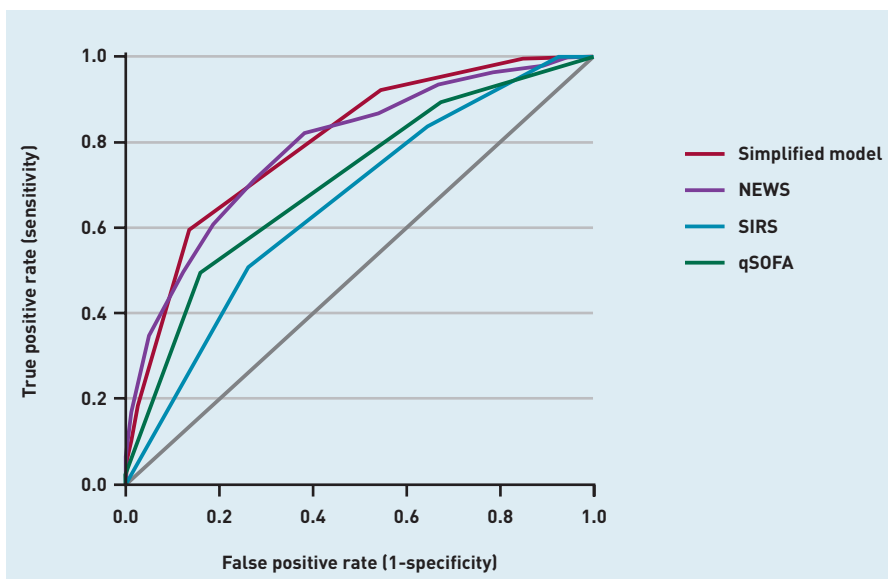


Figure 5. Receiver operating curves of the simplified model, NEWS, qSOFA, and SIRS for the outcome sepsis. qSOFA = quick Sequential Organ Failure Assessment. NEWS = National Early Warning Score. SIRS = systemic inflammatory response syndrome.

The second dataset (Dataset 2) from an academic medical centre in the north of the Netherlands consisted of 1340 patients with a median age of 65 years, of whom 342

[26%] were diagnosed with sepsis (Sepsis-3 criteria). In this dataset, the C-statistic was 0.70 [95% CI = 0.67 to 0.72] for the simplified model and 0.70 [95% CI = 0.67 to 0.73] for the continuous model. The O/E ratio was 1.4 for the simplified model and 1.7 for the continuous model (see Supplementary Tables S4 and S5, and Supplementary Figures S3–S5 for complete external validation results).

DISCUSSION

Summary

In this observational cohort study, a new and easy-to-use prediction model was developed for the early recognition of sepsis in primary care. Biomarkers provided no significant improvement in prediction performance when added to the model. The respiratory rate could be replaced with the more accessible and more reliable measure, heart rate, without decreasing the prediction performance of the simplified model. The performance of the simplified model was significantly better than SIRS and qSOFA. The outcomes of the present study's simplified model were comparable to NEWS.

The validity of the simplified model was confirmed in the external validation, though some differences were found in discrimination and calibration compared to development data.

Three different aspects may have contributed to these discrepancies. First, the outcome 'sepsis' was defined differently in the external datasets. The SIRS-based sepsis definition may have introduced incorporation bias in the first external dataset (Dataset 1), resulting in better NEWS predictions. Second, the variable 'altered mental status' was registered differently. Any empirical change in mental status was sufficient in the presented study cohort, while a decrease in the Glasgow coma score was used in the validation cohorts. This score is probably less sensitive

Table 2. Diagnostic accuracy measures with 95% confidence intervals of the simplified prediction model for predicting sepsis at different score thresholds in development data, N = 357

Cut-off point, (n)	Sensitivity (95% CI)	Specificity (95% CI)	LR+ (95% CI)	LR- (95% CI)	PPV (95% CI)	NPV (95% CI)
≥1 (352)	100 (98 to 100)	2.4 (0.8 to 5.6)	1.02 (1.00 to 1.05)	0.00	43 (38 to 48)	100
≥2 (324)	99 (96 to 100)	16 (11 to 21)	1.18 (1.11 to 1.25)	0.04 (0.01 to 0.31)	46 (41 to 52)	97 (84 to 100)
≥3 (251)	92 (87 to 96)	46 (39 to 53)	1.69 (1.48 to 1.93)	0.17 (0.10 to 0.31)	55 (49 to 62)	89 (81 to 94)
≥4 (118)	60 (51 to 68)	86 (81 to 91)	4.39 (3.03 to 6.34)	0.47 (0.38 to 0.57)	76 (68 to 84)	74 (68 to 80)
≥5 (32)	18 (12 to 25)	98 (94 to 99)	7.37 (2.90 to 18.7)	0.84 (0.78 to 0.91)	84 (67 to 95)	62 (56 to 67)

LR+ = positive likelihood ratio. LR- = negative likelihood ratio. PPV = positive predictive value. NPV = negative predictive value.

Table 3. Optimism corrected performance measures in development data of the multivariable model consisting of clinical parameters as continuous variables (continuous model), with the addition of lactate and procalcitonin (continuous model + biomarkers), simplified model, SIRS, qSOFA, and NEWS, N= 357

Prediction model	C statistic (95% CI)	Calibration slope	Brier score
Continuous model	0.80 (0.75 to 0.84)	0.86	0.181
Continuous model + biomarkers	0.80 (0.74 to 0.84)	0.83	0.176
Simplified model	0.80 (0.76 to 0.83)	1.00	0.175
NEWS	0.79 (0.75 to 0.83)	1.01	0.182
qSOFA	0.71 (0.66 to 0.75)	1.02	0.207
SIRS	0.66 (0.61 to 0.70)	1.03	0.224

qSOFA = quick Sepsis-related Organ Failure Assessment. NEWS = National Early Warning Score. SIRS = systemic inflammatory response syndrome (based on criteria: temperature <36°C or >38°C, respiratory rate >20 breaths/min, and heart rate >90 beats/min).

to subtle changes in mental status. Finally, admission of intravenous fluids and supplemental oxygen by ambulance personnel to patients with sepsis have likely occurred. Consequently, vital signs may have normalised once patients arrived at the ED and were included in the study.²⁸

A simple score-based model can accurately predict sepsis in adult primary care patients with suspected severe infections at home. Biomarkers do not improve the model's predictive performance. The score does not replace clinical judgement, and further research will have to demonstrate how GPs can best use the score to improve the management of patients with possible sepsis.

Strengths and limitations

To the authors' knowledge, this study is the first to include patients in their home situation, where the decision to refer the patient had yet to be made. This is a major strength as the potential impact on patient care is larger in these patients than in patients already in, or in transit to, the hospital. Another strength of the study is the prospective design, specifically tailored to developing a clinical prediction rule. As only very few data on the candidate predictors were missing, the study was sufficiently powered according to prevailing sample size calculation methods.^{25,29,30} Furthermore, the newly developed models were internally and externally validated and compared to existing scoring systems.

Several limitations of this study should be taken into account. First, using an expert panel as a reference standard for sepsis may have resulted in biased results. Verification bias may have occurred as patients referred

to the hospital received more diagnostic tests than non-referred patients. Second, as some candidate predictors were also part of the SOFA score, this may have resulted in incorporation bias. Therefore, sensitivity analyses were performed, using a stricter calculation of the SOFA score and alternative outcomes, that is, adverse outcomes and need for hospital treatment according to the expert panel. These analyses did not suggest significant bias. Furthermore, not all eligible patients had been included in the study. However, the most common reasons not to include eligible patients were not based on patient factors but rather on having too busy a shift, which is unlikely to have resulted in selection bias. Finally, the external validations were performed in patients assessed in the accident and emergency department due to suspected infection. Ideally, validation of the model would have been performed in a primary care population in whom the decision to refer a patient to the hospital was not yet made. These data were not available to the authors. However, the fact that the model also performed well in other domains underscores robustness.

Comparison with existing literature

Other clinical prediction rules have been proposed for either patients with sepsis or those who are critically ill in the prehospital setting. These were mostly derived from retrospective data retrieved from patients transported by ambulance and used SIRS-based sepsis definitions.³¹ Only one prospective cohort study using the Sepsis-3 outcome definition was found in the prehospital setting, which included 551 patients with suspected infection in the ambulance.³² This study showed blood pressure ≤100 mmHg, temperature >38.5 °C, lactate >4 mmol/L, gastrointestinal symptoms, and altered mental status to be most predictive of sepsis. These findings mainly align with the results of the present study and support the decision not to include respiratory rate in the simplified model. In the present data, only three patients showed lactate >4 mmol/L, which might explain why lactate was not found to be a useful predictor in the primary care setting. Two studies were found in which vital signs were measured in acutely ill adult patients in a primary care setting.^{32,33} However, both studies only included patients who were referred to a hospital or acute care clinic, and both did not report sepsis as an outcome measure.

The simplified prediction model developed in the current study was

Funding

This study was funded by The Netherlands Organisation for Health Research and Development (ZonMw) (grant number: 843001811). Star-shl Diagnostic Centres provided additional funding. The following manufacturers provided in-kind funding of materials: Philips, Nova Biomedical, and ThermoFisher. The funders had no role in the design and conduct of the study; collection, management, analysis, and interpretation of data; preparation, review, or approval of the manuscript; and decision to submit the manuscript for publication.

Ethical approval

The study received ethical approval from the Medical Research Ethics Committee Utrecht (reference number: 18-169).

comparable to NEWS. NEWS was initially developed for the early detection of clinical deterioration of adult patients admitted to the hospital.³⁴ Recent studies in the ED setting showed NEWS superior to SIRS and qSOFA in predicting sepsis,^{35,36} which was confirmed in the present study for the primary care setting. An implementation study of NEWS in the prehospital setting in England showed promising results,³⁷ but NEWS was only performed in 30% and 63% of cases by GP-support teams and ambulance personnel, respectively.³⁸

Implications for research and practice

Though the difference between empirical clinical assessment by the GP and performance of the present model was modest, it can help support clinicians during the busy daily routine, reduce variation in the quality of primary care, and improve collaboration between primary and secondary care for this potentially life-threatening condition. The model is not intended to overrule the GP's overall

judgement but rather to inform the GP on the probability of the sepsis outcome. The GP can subsequently use this information to decide whether or not to refer the patient to hospital. The presented simplified model is easy to use in daily practice. Compared to the NEWS score, the presented model does not include respiratory rate and does not have a complex scoring matrix. The results do not mean that respiratory rate should not be measured in severely ill patients, and the minority of the GPs who are currently using NEWS are using a valid and useful model, as the present results showed. The simplified model presented here showed similar diagnostic properties and could be easier to implement in the primary care setting. After the decision to refer a patient owing to suspected sepsis, ambulance personnel can score the NEWS depending on local protocols. Before widely advocating the new model, effects on referrals and patient outcomes should also be prospectively evaluated in a pragmatic trial in primary care.

Data

De-identified patient data that underlie the presented results in this article will be made available to researchers with a methodological sound proposal. A data dictionary of all variables will be provided. Data will be available from 3 months after publication until 5 years after publication. Requests should be made to the corresponding author.

Provenance

Freely submitted; externally peer reviewed.

Competing interests

Rogier M Hopstaken declares to have received honoraria from Lumiradx, Photondelta, and Abbott for advisory board meetings and lecturing. Arthur RH van Zanten reports receiving honoraria for advisory board meetings, lectures, research, and travel expenses from Baxter, Cardinal Health, Danone-Nutricia, DIM3, Fresenius Kabi, Mermaid, Lyric, and Nestlé-Novartis. Theo JM Verheij participated in studies that were funded by the EU and partly by Biomerieux, Becton Dickinson, Janssen Pharmaceuticals, and Abbott (IMI projects). All other authors have declared no competing interests.

Acknowledgements

The authors thank all site personnel of the GP cooperatives and the patients for participating in this study. They also thank Idelette Nutma for her valuable input as a patient representative throughout the study and Eugenie Gemen of the Laboratory of Clinical Chemistry and Haematology of the Jeroen Bosch Hospital for assistance with analyses of the blood samples.

Open access

This article is Open Access: CC BY 4.0 licence (<http://creativecommons.org/licenses/by/4.0/>).

Discuss this article

Contribute and read comments about this article: bjgp.org/letters

REFERENCES

1. Kumar A, Roberts D, Wood KE, *et al.* Duration of hypotension before initiation of effective antimicrobial therapy is the critical determinant of survival in human septic shock. *Crit Care Med* 2006; **34(6)**: 1589–1596.
2. Rhodes A, Evans LE, Alhazzani W, *et al.* Surviving Sepsis Campaign: international guidelines for management of sepsis and septic shock: 2016. *Crit Care Med* 2017; **45(3)**: 486–552.
3. Levy MM, Evans LE, Rhodes A. The Surviving Sepsis Campaign Bundle: 2018 update. *Intensive Care Med* 2018; **44(6)**: 925–928.
4. Peltan ID, Brown SM, Bledsoe JR, *et al.* ED door-to-antibiotic time and long-term mortality in sepsis. *Chest* 2019; **155(5)**: 938–946.
5. Seymour CW, Gesten F, Prescott HC, *et al.* Time to treatment and mortality during mandated emergency care for sepsis. *N Engl J Med* 2017; **376(23)**: 2235–2244.
6. Tromp M, Tjan DH, van Zanten AR, *et al.* The effects of implementation of the Surviving Sepsis Campaign in the Netherlands. *Neth J Med* 2011; **69(6)**: 292–298.
7. Latten GHP, Claassen L, Jonk M, *et al.* Characteristics of the prehospital phase of adult emergency department patients with an infection: a prospective pilot study. *PLoS One* 2019; **14(2)**: e0212181.
8. Søvsø MB, Christensen MB, Bech BH, *et al.* Contacting out-of-hours primary care or emergency medical services for time-critical conditions — impact on patient outcomes. *BMC Health Serv Res* 2019; **19(1)**: 813.
9. Loots FJ, Arpots R, van den Berg R, *et al.* Recognition of sepsis in primary care: a survey among GPs. *BJGP Open* 2017; DOI: <https://doi.org/10.3399/bjgpopen17X100965>.
10. Mulders MCF, Loots FJ, van Nieuwenhoven J, *et al.* Use of sepsis-related diagnostic criteria in primary care: a survey among general practitioners. *Fam Pract* 2021; **25(5)**: 617–622.
11. Seymour CW, Liu VX, Iwashyna TJ, *et al.* Assessment of clinical criteria for sepsis: for the Third International Consensus Definitions for Sepsis and Septic Shock (Sepsis-3). *JAMA* 2016; **315(8)**: 762–774.
12. Bone RC, Balk RA, Cerra FB, *et al.* Definitions for sepsis and organ failure and guidelines for the use of innovative therapies in sepsis. The ACCP/SCCM Consensus Conference Committee. American College of Chest Physicians/Society of Critical Care Medicine. *Chest* 1992; **101(6)**: 1644–1655.
13. Royal College of Physicians. *National Early Warning Score (NEWS) 2: standardising the assessment of acute-illness severity in the NHS*. 2017. <https://www.rcplondon.ac.uk/projects/outputs/national-early-warning-score-news-2> [accessed 31 Mar 2022].
14. Smits M, Rutten M, Keizer E, *et al.* The development and performance of after-hours primary care in the Netherlands: a narrative review. *Ann Intern Med* 2017; **166(10)**: 737–742.
15. Loots FJ, Hopstaken R, Jenniskens K, *et al.* Development of a clinical prediction rule for sepsis in primary care: protocol for the TeSD-IT study. *Diagn Progn Res* 2020; **4**: 12.
16. National Institute for Health and Care Excellence. *Sepsis: recognition, diagnosis and early management. NG51*. 2017. <https://www.nice.org.uk/guidance/ng51> [accessed 31 Mar 2022].
17. Dutch Triage Standard. Dutch triage system. 2022. www.de-nts.nl [accessed 31 Mar 2022].
18. Rako I, Mlinaric A, Dozelencic M, *et al.* Effect of different pre-analytical conditions on plasma lactate concentration. *Biochem Med (Zagreb)* 2018; **28(2)**: 020701.
19. Singer M, Deutschman CS, Seymour CW, *et al.* The Third International Consensus Definitions for Sepsis and Septic Shock (Sepsis-3). *JAMA* 2016; **315(8)**: 801–810.
20. Vincent JL, Moreno R, Takala J, *et al.* The SOFA (sepsis-related organ failure assessment) score to describe organ dysfunction/failure. On behalf of the Working Group on Sepsis-related Problems of the European Society of Intensive Care Medicine. *Intensive Care Med* 1996; **22(7)**: 707–710.
21. van Buuren S, Groothuis-Oudshoorn K. mice: Multivariate Imputation by Chained Equations in R. *J Stat Softw* 2011; **45(3)**: 1–67.
22. Perkins NJ, Cole SR, Harel O, *et al.* Principled approaches to missing data in epidemiologic studies. *Am J Epidemiol* 2018; **187(3)**: 568–575.
23. Rubin DB. *Multiple imputation for nonresponse in surveys*. New York, NY: Wiley, 1987.
24. Akaike H. A new look at the statistical model identification. *IEEE Trans Automat Contr* 1974; **19(6)**: 716–723.
25. Heinze G, Wallisch C, Dunkler D. Variable selection — a review and recommendations for the practicing statistician. *Biom J* 2018; **60(3)**: 431–449.
26. Wahl S, Boulesteix AL, Zierer A, *et al.* Assessment of predictive performance in incomplete data by combining internal validation and multiple imputation. *BMC Med Res Methodol* 2016; **16(1)**: 144.
27. Levy MM, Fink MP, Marshall JC, *et al.* 2001 SCCM/ESICM/ACCP/ATS/SIS International Sepsis Definitions Conference. *Crit Care Med* 2003; **31(4)**: 1250–1256.
28. Quinten VM, van Meurs M, Ter Maaten JC, Ligtenberg JJ. Trends in vital signs and routine biomarkers in patients with sepsis during resuscitation in the emergency department: a prospective observational pilot study. *BMJ Open* 2016; **6(5)**: e009718.
29. Peduzzi P, Concato J, Kemper E, *et al.* A simulation study of the number of events per variable in logistic regression analysis. *J Clin Epidemiol* 1996; **49(12)**: 1373–1379.
30. van Smeden M, Moons KG, de Groot JA, *et al.* Sample size for binary logistic prediction models: beyond events per variable criteria. *Stat Methods Med Res* 2019; **28(8)**: 2455–2474.
31. Smyth MA, Brace-McDonnell SJ, Perkins GD. Identification of adults with sepsis in the prehospital environment: a systematic review. *BMJ Open* 2016; **6(8)**: e011218.
32. Wallgren UM, Sjölin J, Järnbert-Pettersson H, Kurland L. The predictive value of variables measurable in the ambulance and the development of the Predict Sepsis screening tools: a prospective cohort study. *Scand J Trauma Resusc Emerg Med* 2020; **28(1)**: 59.
33. Camm CF, Hayward G, Elias TCN, *et al.* Sepsis recognition tools in acute ambulatory care: associations with process of care and clinical outcomes in a service evaluation of an emergency multidisciplinary unit in Oxfordshire. *BMJ Open* 2018; **8(4)**: e020497.
34. Prytherch DR, Smith GB, Schmidt PE, Featherstone PI. ViEWS — Towards a National Early Warning Score for detecting adult inpatient deterioration. *Resuscitation* 2010; **81(8)**: 932–937.
35. Mellhammar L, Linder A, Tverring J, *et al.* NEWS2 is superior to qSOFA in detecting sepsis with organ dysfunction in the emergency department. *J Clin Med* 2019; **8(8)**: 1128.
36. Wattanasit P, Khwannimit B. Comparison the accuracy of early warning scores with qSOFA and SIRS for predicting sepsis in the emergency department. *Am J Emerg Med* 2020; **46**: 284–288.
37. Pullyblank A, Tavaré A, Little H, *et al.* Implementation of the National Early Warning Score in patients with suspicion of sepsis: evaluation of a system-wide quality improvement project. *Br J Gen Pract* 2020; DOI: <https://doi.org/10.3399/bjgp20X709349>.
38. Scott LJ, Redmond NM, Garrett J, *et al.* Distributions of the National Early Warning Score (NEWS) across a healthcare system following a large-scale roll-out. *Emerg Med J* 2019; **36(5)**: 287–292.