

Exploiting the potential of autophagy in cisplatin therapy: A new strategy to overcome resistance

Jesús García-Cano¹, Gorbachev Ambroise^{2,*}, Raquel Pascual-Serra^{1,*}, Maria Carmen Carrión^{3,4}, Leticia Serrano-Oviedo¹, Marta Ortega-Muelas¹, Francisco J. Cimas¹, Sebastià Sabater⁵, María José Ruiz-Hidalgo^{6,7}, Isabel Sanchez Perez^{8,7}, Antonio Mas^{1,7,9}, Félix A. Jalón³, Aimé Vazquez², Ricardo Sánchez-Prieto^{1,4,7}

¹Unidad de Medicina Molecular, Centro Regional de Investigaciones Biomédicas. Universidad de Castilla-La Mancha, Albacete, Spain

²INSERM U.1197/Université Paris-Sud/Equipe Labellisée Ligue Nationale Contre le Cancer, Hôpital Paul Brousse, Villejuif, France

³Departamento de Química Inorgánica, Orgánica y Bioquímica, UCLM. Facultad de Ciencias y Tecnologías Químicas-IRICA, Ciudad Real, Spain

⁴Fundación Parque Científico y Tecnológico de Castilla-La Mancha, Albacete, Spain

⁵Radiation Oncology Department, Complejo Hospitalario Universitario Albacete (CHUA), Spain

⁶Departamento de Química Orgánica, Inorgánica y Bioquímica, Facultad de Medicina, Albacete, Spain

⁷Unidad asociada de Biomedicina, UCLM-CSIC, Albacete, Spain

⁸Department of Biochemistry, School of Medicine, UAM/Biomedical Research Institute of Madrid, Madrid CSIC/UAM, Madrid, Spain

⁹Facultad de Farmacia, Universidad de Castilla-La Mancha, Albacete, Spain

*These authors have contributed equally to this work

Correspondence to:

Ricardo Sánchez-Prieto, **e-mail:** Ricardo.Sanchez@uclm.es

Keywords: cisplatin, apoptosis, autophagy, synthetic lethality, monoplatin

Received: April 10, 2015

Accepted: April 24, 2015

Published: May 06, 2015

ABSTRACT

Resistance to cisplatin is a major challenge in the current cancer therapy. In order to explore new therapeutic strategies to cisplatin resistance, we evaluated, in a model of lung cancer (H1299 and H460 cell lines), the nature of the pathways leading to cell death. We observed that H1299 displayed a natural resistance to cisplatin due to an inability to trigger an apoptotic response that correlates with the induction of autophagy. However, pharmacological and genetic approaches showed how autophagy was a mechanism associated to cell death rather than to resistance. Indeed, pro-autophagic stimuli such as mTOR or Akt inhibition mediate cell death in both cell lines to a similar extent. We next evaluated the response to a novel platinum compound, monoplatin, able to promote cell death in an exclusive autophagy-dependent manner. In this case, no differences were observed between both cell lines. Furthermore, in response to monoplatin, two molecular hallmarks of cisplatin response (p53 and MAPKs) were not implicated, indicating the ability of this pro-autophagic compound to overcome cisplatin resistance. In summary, our data highlight how induction of autophagy could be used in cisplatin resistant tumours and an alternative treatment for p53 mutated patient in a synthetic lethally approach.

INTRODUCTION

Cisplatin (CDDP) is one of the most widely used drugs in cancer therapy. [1] Its mechanism of action has been deeply investigated, being the DNA molecules the main target of this drug. [2, 3] Since early 90's, it is known that apoptosis is the main mechanism by which CDDP exerts its cytotoxic effect [4] (For an excellent review, see ref. [5]). Nonetheless, resistance to this drug is still a major challenge in cancer therapy due to its wide use in the treatment of different types of tumours as well as its use in combination with other therapies. [1] Therefore, the search of new therapeutic alternatives to solve this problem will have an impact in the daily clinical practice. In this regard, novel molecules based on platinum are currently developed and, some of them, under clinical investigation like satraplatin, which is known to promote apoptosis to execute its therapeutic effect. [6] Furthermore, it has been proposed the use of novel targets for CDDP, like mitochondrial DNA, to overcome CDDP resistance rendering compounds like Platin-M which is able to promote an apoptotic response. [7]

Autophagy is the main mechanism for recycling cellular components. The most commonly studied type of autophagy is macroautophagy and there is already a vast knowledge about its molecular machinery (For a review, see ref. [8]). Recently, a growing body of evidences is implicating autophagy in cancer and its therapy. [9] There are several ways of how autophagy is related to cancer therapy. On the one hand, compounds able to trigger this biological response are considered novel and promising therapeutic approaches, being the mTOR inhibitors the best example (For a review, see ref. [10]). On the other hand, there are numerous examples of how autophagy is related to a resistant response as in the case 5-Fluorouracil, Doxorubicin or ionizing radiation among others. [11–13] Even, in response to non DNA-damaging agents like Tyrosine kinase inhibitors (vg. Sorafenib), it has been observed the induction of autophagy, [14, 15] indicating the broad implication of this process in cancer therapy. In this sense, it is noteworthy how compounds able to block autophagy are considered therapeutic agents, especially in combination with DNA damaging agents, as in the case of chloroquine, but with side effects that should be considered in future therapies. [16] In summary, the role of autophagy in cancer therapy seems to be dual, with implications either in sensitivity and in resistance depending on the system and the therapeutic agent used. [17, 18]

In this context, we decided to study the basis of CDDP resistance in an experimental model of lung cancer. Our data indicate that resistance to CDDP is due to the lack of a functional apoptotic response. However, this resistance correlates with the appearance of autophagy, which seems to be a mechanism of cell death poorly triggered by CDDP. Interestingly, in response of pro-autophagic compounds such as mTOR or Akt inhibitors, no differences were

detected between cell lines. Indeed, a novel platinum-based compound monoplatin (MonoPt), which specifically promotes autophagy, was able to kill CDDP-resistant and sensitive cells in a similar fashion. This effect was independent of key players of the cellular response to CDDP such as p53 or MAPKs. Therefore, our results suggest that a synthetic lethality approach based on autophagy could open a new therapeutic window for tumours with a deficient response to apoptotic stimuli like CDDP.

RESULTS

Resistance to CDDP correlates with lack of apoptosis

To gain further insight into the basis of CDDP resistance in lung cancer we used H1299 and H460 cells. First, we performed a dose-response assay to CDDP in both cell lines. As expected, H1299 showed a great resistance by crystal violet method as well as by MTT (Figure 1A and 1B), in agreement with previous reports [19]. Considering that apoptosis is the main mechanism for cell death associated to CDDP we evaluated it by different methods in both experimental models. While H460 cells displayed a consistent induction of apoptosis by means of flow cytometry assays (Figure 1C and 1D), western blotting and caspase enzymatic activity (Figure 1E and 1F), no effect was observed in H1299 cells (Figures 1C, 1D, 1E, 1F). In the case of H460, no activation on caspase 8 was observed (data not shown) thus leading us to conclude that apoptosis was triggered through the extrinsic pathway. To fully prove our observations, we challenged a pan-caspase inhibitor like Q-VD-OPh (Q-VD). [20] Q-VD was able to promote a decrease in the apoptotic response in H460 cells that correlates with an increase in their viability. Interestingly, the same compound did not modify the response in H1299 (Figures 1G and 1H). Furthermore, another DNA-damaging agent such as ionizing radiation, known to promote apoptosis, was challenged in this experimental system showing again a correlation between resistance and lack of apoptosis (Supplementary Figure S1). In summary, this set of experiments demonstrate that the lack of apoptosis is a key mechanism in the resistance observed in H1299 cells.

To fully understand CDDP resistance associated to H1299 cells we decided to analyse several anti- and pro-apoptotic proteins. As it is shown (Figure 2A), among the anti-apoptotic, Bcl-2 family proteins, Bcl-xL and Bcl-w showed a slight upregulation in H1299 cells while a marked downregulation was observed for Bcl-2. In the case of pro-apoptotic, BH3-only proteins, Noxa and Bax showed a marked downmodulation in H1299 cells, in agreement with a previous report that connects these proteins to CDDP response. [21] Indeed, the use of a BH3-mimetic compound such as ABT263, [22] showed no effect onto H460 cells, while in H1299, it was able to

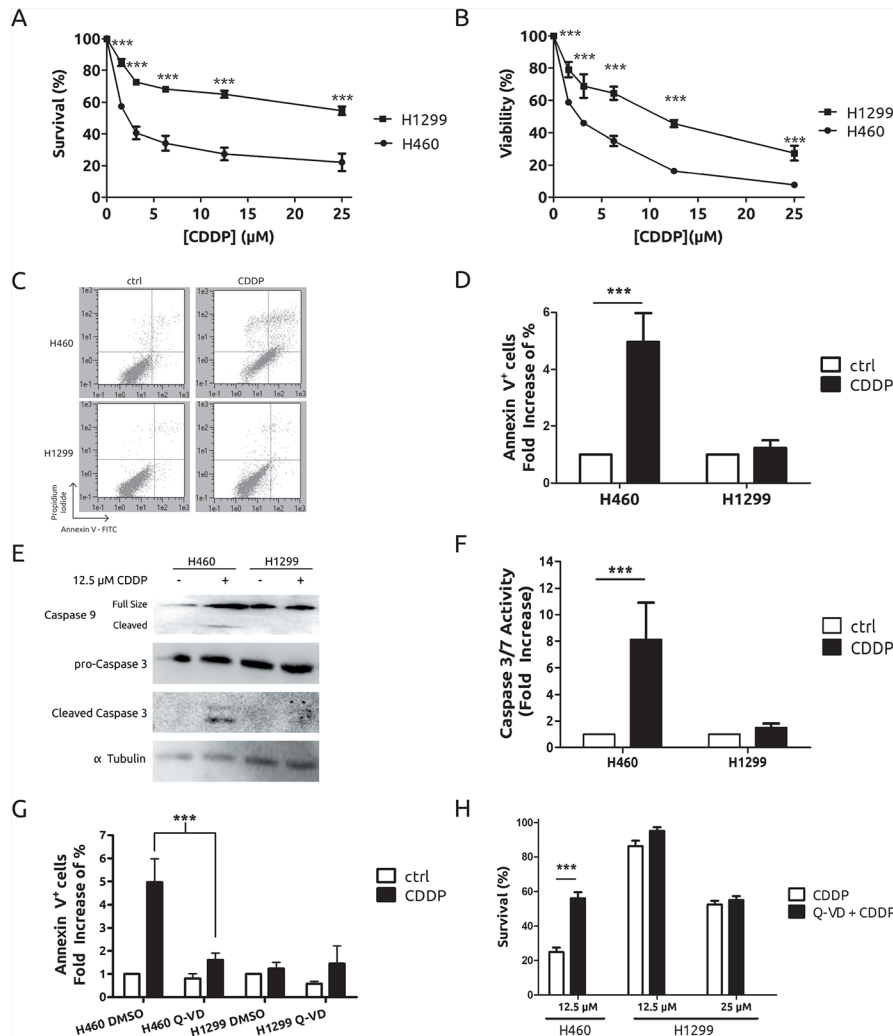


Figure 1: CDDP triggers cell death through the apoptotic pathway on H460 cells but not on H1299 cells. Cells were treated for 48 h at the indicated concentrations and survival and viability were assessed by crystal violet **A**, or MTT **B**, respectively. **C**. Cells were treated with 12.5 μ M CDDP for 36 h and stained with Annexin V-FITC/Propidium Iodide for cytometric assay. **D**. Results from 3 independent experiments conducted as in (C). **E**. Cells were treated with CDDP at indicated concentrations for 36 h and protein extracts were blotted with the indicated antibodies **F**. Cells were treated with 12.5 μ M CDDP for 24 h and caspase 3/7 activity was evaluated. **G**. Cells were treated and processed as in (C) in the presence or absence of 10 μ M Q-VD caspase inhibitor and plotted as in (D). **H**. Survival upon treatment with CDDP, at the indicated concentrations, in the presence or absence of 10 μ M Q-VD caspase inhibitor measured by crystal violet 48 h after co-treatment.

promote a discrete effect onto the apoptotic response with almost no effect on viability (Figures 2B and 2C). These last data suggest that a deregulated pattern in pro- and anti-apoptotic proteins could be a mechanism to partially explain the resistant phenotype observed in H1299 cells. However, it should coexist with other mechanisms to fully explain the acute resistance of these cells.

H1299 cells undergo autophagy in response to CDDP

A growing body of evidences support that autophagy is a putative mechanism of resistance to CDDP. [23–25] Therefore, we decided to challenge this hypothesis in

our experimental model by evaluating lipidation of LC3 and degradation of p62/SQSTM1 following standard procedures. [26] As it is shown, H1299 cells showed an increase in the lipidated form of LC3 (LC3-II) as well as a decrease of p62/SQSTM1 in response to CDDP, which were not observed in H460 cells (Figure 3A). In fact, transfection of GFP-LC3 in H1299 renders a pattern consistent with the induction of autophagy (Supplementary Figure 2A). To fully support the role of autophagy in CDDP resistance, H1299 and H460 cells were incubated in the presence of a known autophagy inhibitor, 3-methyladenine (3MA), [27] and viability in response to CDDP was evaluated. As expected (Figure 3B), inhibition of autophagy by 3MA did not modify the viability of H460

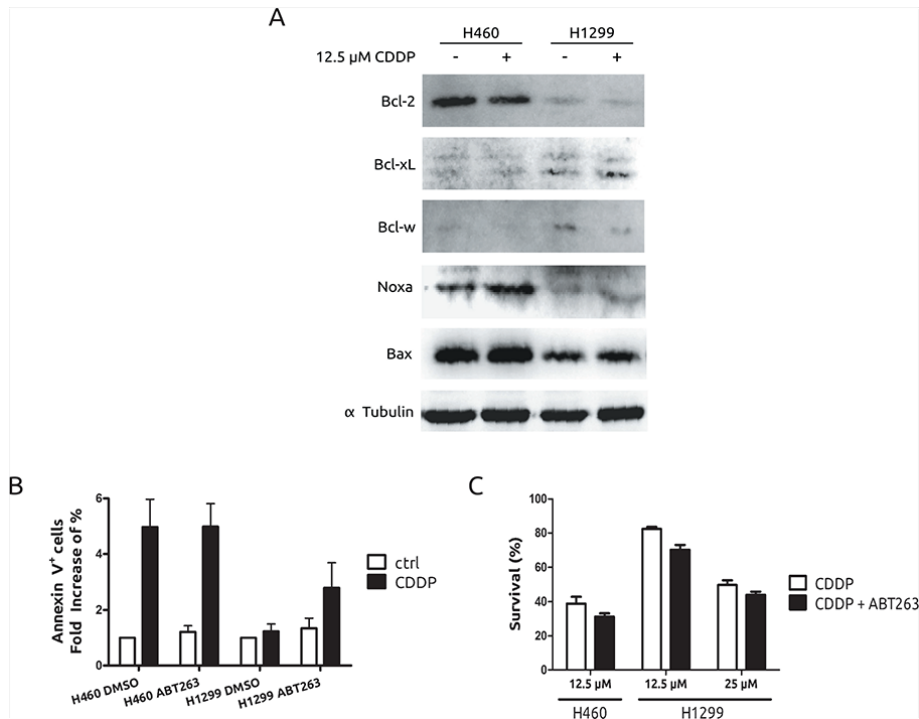


Figure 2: Pro- and anti-apoptotic protein expression pattern in H1299 and H460 cells. **A.** Presence of Bcl-2 superfamily members and BH3-only proteins was evaluated by western blot after 36 h of CDDP treatment. **B.** Cells were treated with CDDP in the presence or absence of 20 nM of ABT263 and Annexin V staining was observed 36 h after by cytometry. **C.** Viability was evaluated in the same conditions as in (B) 48 h after by crystal violet method.

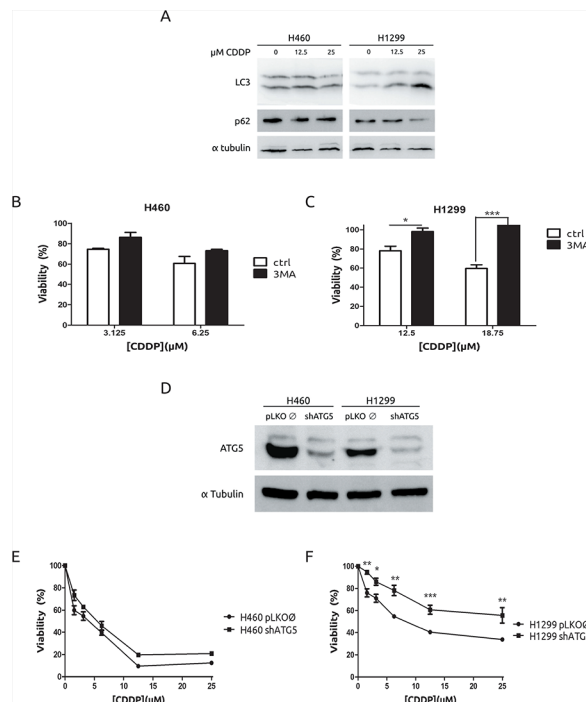


Figure 3: Autophagy is associated to cell-death in H1299 cells in response to CDDP. **A.** H460 cells were treated for 36 h and protein extracts were blotted with the indicated antibodies. **B.** and **C.** Cells were treated with CDDP at the indicated concentrations in the presence or absence of 2.5 mM 3MA. Viability was assessed by MTT. **D.** Extracts from H460 cells and H1299 cells infected either with lentivirus carrying an empty vector or shRNA against Atg5 were blotted against ATG5. **E.** H460 cells and H1299 cells **F.** were infected as described in D and treated with the indicated concentrations of CDDP and viability was measured by MTT.

cells. Surprisingly, in H1299 cells we observed an increase in the resistance (Figure 3C). These data prompted us to consider that autophagy was a mechanism to explain the low cell death observed in H1299 cells. Next, we used a genetic approach to fully establish the role of autophagy in CDDP resistance. To this end, *Atg5* gene, which is key player in the progression of autophagy, [8] was knocked-down by using shRNA. After achieving an effective abrogation of ATG5 at the protein level in both cell lines (Figure 3D), viability was evaluated, showing almost no effect in H460 cells, while an increase in viability was observed in H1299 cells (Figures 3E and 3F) correlating with a lack of autophagy (Supplementary Figure S2B).

Therefore, this set of experiments allows us to conclude that autophagy is not mediating the observed resistant phenotype. Furthermore, it suggests that autophagy is a plausible way to explain the cell death poorly triggered by CDDP in H1299 cells.

H1299 do not display resistance to compounds that promote autophagy

In light of our previous results, we considered the possibility of exploiting autophagy as a therapeutic mechanism in our experimental model of CDDP-resistant cells. A growing body of evidences is supporting the PI3K-Akt-mTOR axis as a potent therapy target in several types of cancers including lung cancer. [28] Hence, we challenged a potent promoter of autophagy such as rapamycin. As expected, both cell lines showed a marked induction of autophagy (Figure 4A) and a similar grade of toxicity in response to rapamycin (Figure 4B). Next, treatment with the Akt inhibitor MK2206, known to promote autophagic cell death [29] was also evaluated. As it is shown in Figure 4C and 4D, both cell lines showed the same behaviour in terms of autophagy, Akt inhibition and viability upon MK2206 treatment. Therefore, these results indicate that autophagy induction is effective in both models to a similar extent and no resistance to autophagy-prone drugs was observed in this experimental system. In light of these findings we took advantage of the availability of a novel platinum derivate, monoplatin (MonoPt) able to promote specifically autophagic cell death. [30] Then, cells were exposed to MonoPt and viability was evaluated. As it is shown, H1299 and H460 cells showed similar sensitivity to this platinum compound as judged by crystal violet method (Figure 5A) or by MTT (Figure 5B). Next, we confirmed the induction of autophagy (Figure 5C and Supplementary Figure 3A) as well as the lack of apoptosis induction (Figure 5D). In this case, blockade of autophagy promotes a resistant phenotype in both cell systems by using either 3MA (Figures 5E and 5F) as well as the interference of *Atg5* (Figures 5G and 5H), correlating with an alteration in the onset of autophagy (Supplementary Figures 3B and 3C).

In summary, our data demonstrate how autophagy can be used as a novel synthetic lethally approach to

overcome natural resistance to CDDP when apoptotic response is impaired.

MonoPt-triggered autophagy is p53- and MAPKs independent

In an attempt to fully validate our strategy, the use of an autophagy-provoking compound in CDDP-resistant cells, we challenged the role of two major determinants of CDDP resistance such as p53 and MAPKs signalling axis [31].

The role of the tumour suppressor p53 in CDDP resistance has been well established for more than 20 years. [32] In fact, in our experimental model, a strict correlation exists between lack of functional p53 and resistance. Therefore, to study the role of p53 in MonoPt-associated autophagy, we took advantage of the availability of the experimental model of HCT116 cells with both p53 alleles disrupted [33] (Figure 6A). Next, cells were exposed to CDDP or MonoPt and viability was evaluated. As expected, p53-null cells showed a clear resistance compared to p53-wt cells in response to CDDP (Figure 6B). However, in the case of MonoPt, the differences were undetectable (Figure 6C). Furthermore, apoptosis was analysed, showing a nice correlation with sensitivity to CDDP, while for MonoPt no effect was observed as judged by caspase 3/7 activity (Figure 6D). However, a marked induction of autophagy was observed in both experimental systems (Figure 6E). This set of experiments indicates that autophagy associated to MonoPt is independent of p53 activity, and could be a therapeutic alternative for patients with alterations in this tumour suppressor.

Next, MAPKs were challenged in response to MonoPt. Among the several members of this family, we decided to focus onto p38 and ERK1/2, which have been shown to be implicated in the response to CDDP. [34, 35] As it is shown in Figure 7A, H460 cells displayed a marked increase in the activation of p38 MAPK in response to MonoPt, while in the case of H1299, it almost remains unaffected, with exactly the same pattern than in response to CDDP (data not shown and ref. [19]). Therefore, to fully evaluate the role of this particular MAPK we used a specific inhibitor for all p38MAPK isoforms, such as BIRB796, [36] suggesting no role for this signalling pathway in response to MonoPt (Figure 7B). Regarding to ERK1/2, both cell lines showed a marked increase in the activation of this MAPK (Figure 7A). However, inhibition of this signalling pathway by means of U0126, [37] only promotes resistance in H460, correlating with the blockade of autophagy, with no effect onto H1299 (Figures 7B, and 7D). In summary, this set of experiments demonstrates a lack of implication for p38 MAPK in the response to MonoPt and suggests that the effect of ERK1/2 seems to be cell-type specific, indicating that this signalling pathway can be excluded as universal mediator for the therapeutic effect of MonoPt.

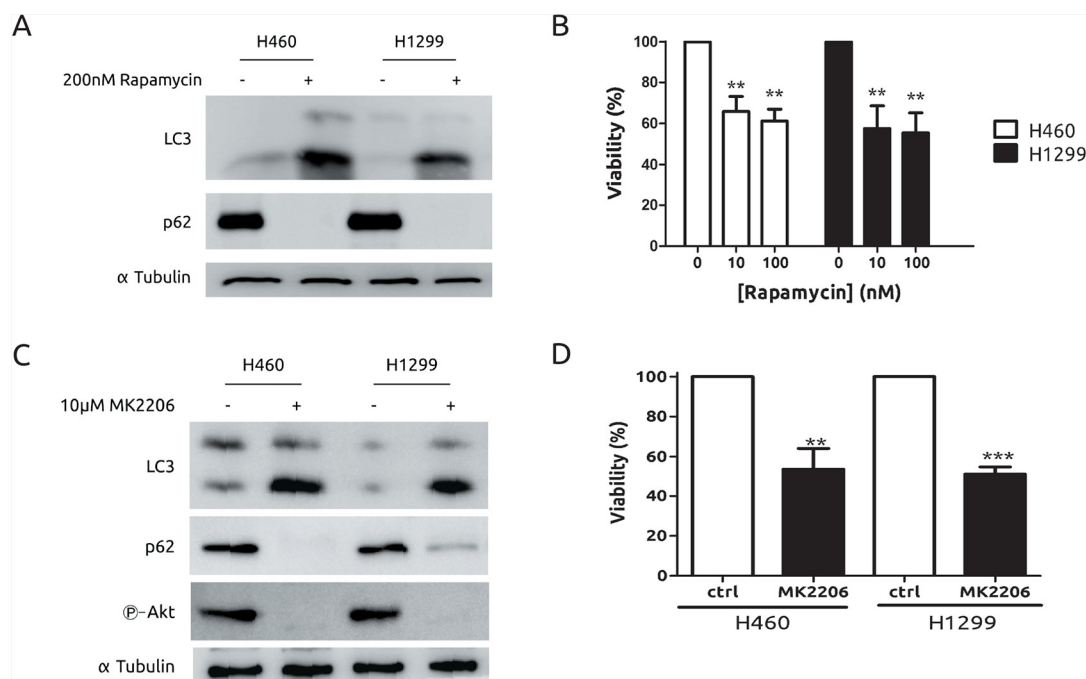


Figure 4: Both H460 and H1299 cells are sensitive to autophagy triggered by mTOR or Akt inhibition. **A.** Cells were exposed to rapamycin for 24 h. Protein extracts were blotted with the indicated antibodies **B.** Cells were incubated with the indicated concentrations of rapamycin for 6 days. Media were replaced with fresh rapamycin every 2 days. Viability was assessed by MTT. **C.** Cells were treated with MK2206 for 24 h. Protein extracts were blotted with the indicated antibodies. **D.** Cells were treated with 10 µM MK2206 for 48 h. Viability was assessed by MTT.

DISCUSSION

Several conclusions can be drawn from the present study. First, the lack of apoptosis is the main mechanism, at least in our experimental model of lung cancer, for CDDP resistance. This observation is inferred from the data obtained in H1299 cells, which were unable to trigger an apoptotic response. In this sense, promotion of apoptosis is a possible way to induce chemosensitivity in CDDP-based therapy. To this end, several approaches have been considered such as the effective abrogation of anti-apoptotic proteins, [38] the use of natural compounds, [39] modulation of specific genes [40] or the use of BH3 mimetic compounds [41, 42] among others. However, these interesting possibilities do not seem to be applicable to our current model of H1299 cells, in which, for example the use of ABT263, a BH3 mimetic, only induces a slight increase in the apoptotic response of this cell line towards CDDP with an almost undetectable shift in its sensitivity. Therefore, our data suggest that, at least in some cases (vg. H1299 cells), promotion of apoptosis is not a real therapeutic alternative.

Second, regarding to autophagy, it has been considered as a mechanism of resistance to CDDP in several pathologies including ovarian and lung cancer. [24, 43, 44] However, in addition to the data presented here, there are other evidences that do not support this idea as a general mechanism. For example, in several experimental

models, this conclusion is based on a mere correlation rather than in a cause-effect demonstration (For example, refs. [45–49]). In some reports, the effect due to autophagic alterations seems to be discreet in terms of viability [43, 45, 50, 51] or the evidences presented are based only on the use of chemical inhibitors such as chloroquine or 3MA (vg. refs. [52–55]) which have been reported to also act through an autophagy-independent mechanism even in response to CDDP. [56, 57] In addition, other evidences connecting autophagy and CDDP resistance are based onto resistant cell lines obtained by co-culturing [47, 50] or even CDDP plus other drugs. [58] In fact, in this context of acquired resistance, very different from natural resistance like in H1299 cells, previous evidences demonstrate how suppression of autophagy is a mechanism of resistance, [59] suggesting that autophagy is a potential mechanism of sensitivity. Furthermore, it is noteworthy that autophagy has been proposed as the mechanism to induce cell death in response to CDDP in the absence of key apoptotic proteins. [60] Therefore, our data demonstrate that when CDDP is unable to trigger an apoptotic response -the natural and effective mechanism of cell death associated to this drug, autophagy, -probably less effective than apoptosis in response to CDDP- is promoting cell death, indicating that both process cannot coexist. [25] Thus, our work excludes autophagy as mechanism of resistance to CDDP in our model, supporting the idea of a cytotoxic autophagy. [18, 61]

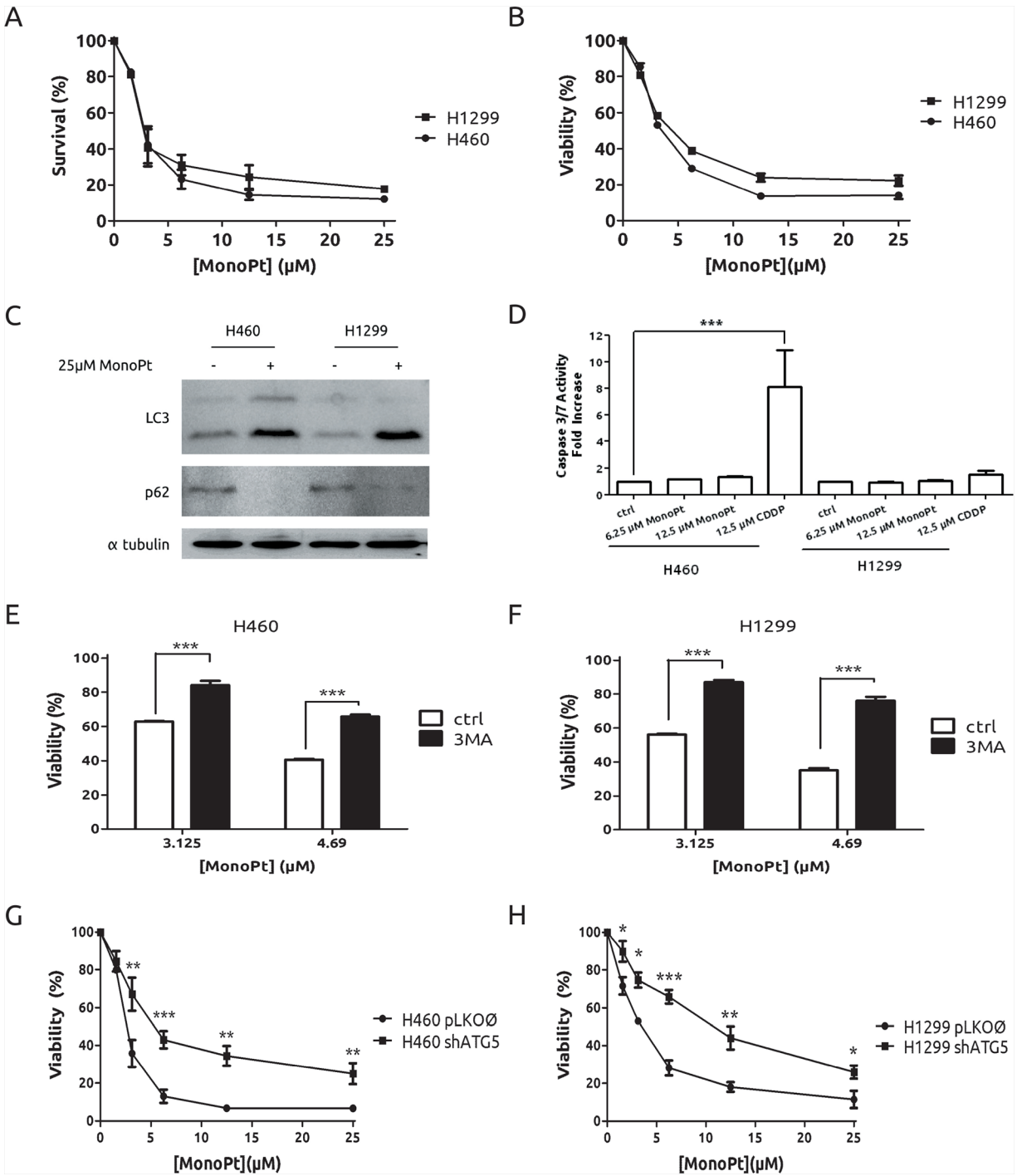


Figure 5: Lack of resistance to MonoPt in H1299 cells. Cells were treated with indicated concentrations of MonoPt. Survival and viability were assessed by crystal violet **A**, and by MTT **B**, respectively. **C**. Cells were treated with MonoPt for 36 h and protein extracts were blotted against LC3 and p62. **D**. Cells were treated as indicated for 24 h and caspases 3 and 7 activity was evaluated. H460 **E**, and H1299 cells **F**, were co-treated with 2.5 mM 3MA at the indicated concentrations of MonoPt. Viability was assessed by MTT. **G**. ATG5-knock-down and control H460 and H1299 **H**, cells were treated with the indicated concentrations of MonoPt. Viability was measured by MTT.

Third, our data support a lack of involvement of classical mediators of CDDP resistance (vg p53 and MAPK) in the response to MonoPt. Regarding to p53, the data obtained in H1299 as well as in HCT116 p53^{-/-}, support that this approach can also be used in mutant-p53

tumours. This issue is especially important considering that alterations in p53 (mutation, inactivation, etc.) are common events in different types cancers (For more information, see <http://p53.free.fr/> and <http://p53.bii.a-star.edu.sg/index.php>) and are also major determinants in the therapeutic response

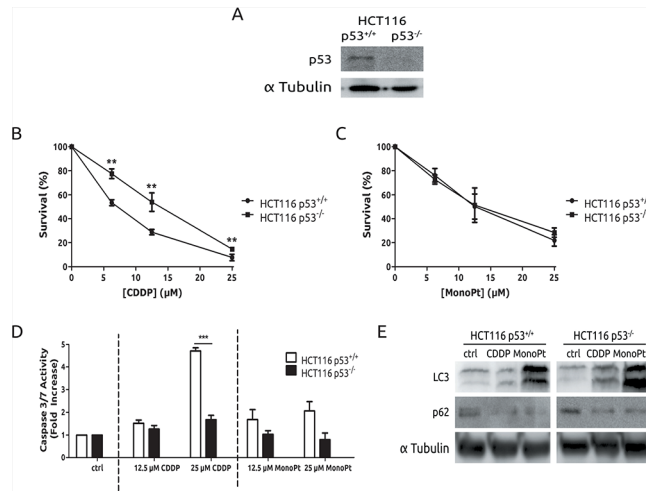


Figure 6: Autophagy triggered by MonoPt is p53 independent. **A.** Cells were blotted to check p53 knock-out. Cells were treated at the indicated concentrations of either CDDP **B.** or MonoPt **C.** for 48 h. Survival was measured by crystal violet. **D.** Cells were treated with the indicated concentrations of either CDDP or MonoPt for 24 h. Caspase3/7 enzymatic activity was measured. **E.** Cells were treated with 25 μ M of either CDDP or MonoPt for 24 h. Protein extracts were blotted with the indicated antibodies.

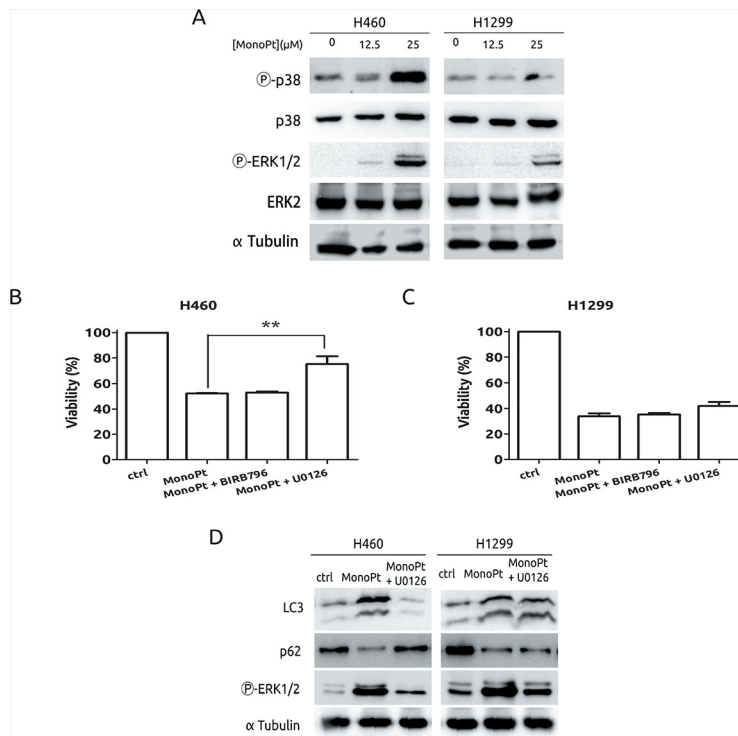


Figure 7: Role of MAPKs in the response to MonoPt. **A.** Cells were treated with the indicated concentrations of MonoPt for 8 h. Protein extracts were blotted with the indicated antibodies. **B.** and **C.** Cells were treated with 4.69 μ M MonoPt either alone or in the presence of 10 μ M BIRB796 or 10 μ M U0126. Viability was measured by MTT. **D.** Cells were treated with 25 μ M MonoPt in the presence or absence of 10 μ M U0126 for 24 hours. Protein extracts were blotted with the indicated antibodies.

to CDDP. [32, 62, 63] Indeed, other determinants of chemoresistance linked to p53 such as MNK2 and wee-1 [64, 65] could be overcome by MonoPt due to its p53 independent mechanism. Regarding to p38 MAPK, previous report did not detect any activation of p38 MAPK by MonoPt, [30] however our data show how p38 MAPK is activated with

the same pattern than in response to CDDP (Data not shown and ref. [19]). In this regard, it is notorious that p38 MAPK, which has been proposed as a key mediator in the response to CDDP [19, 35, 66] is not likely to be extrapolated to MonoPt, probably due to the different cell death mechanism triggered. Finally, regarding to ERK1/2, previous report

considered this MAPK as determinant of MonoPt toxicity [30] in the same sense as in CDDP response. [34, 43] In our experimental model, we found out that autophagy triggered by MonoPt can be either ERK1/2 dependent and independent as it is shown by the use of U0126 in both cell lines, indicating that ERK1/2 are not universal mediators of MonoPt-associated autophagy. Therefore, the definitive role of ERK1/2 in MonoPt response needs to be more deeply investigated.

Finally, a synthetic lethality approach based on the balance of autophagy/apoptosis should be considered as a novel way to overcome chemoresistance to CDDP (Figure 8). Synthetic lethality means that a combination of mutations in two genes leads to cell death, while one single mutation has no effect (For a review, see ref. [67]). This genetic principle can be extrapolated to several biological processes including cancer therapy. [68, 69] It is noteworthy, that previous works proposed synthetic lethality approaches for platinum-based therapy by using PARP-inhibitors, [70] or the use of ATR inhibitors in XRCC1 deficient cells. [71] The idea of autophagy as an agent in cancer therapy has

been previously considered (For a review, see ref. [72]). But, what is more recent, is the concept of autophagy in synthetic lethality approaches for cancer therapy as in the case of renal cell carcinoma (For a review, see ref. [73]). In this sense, our report is the first evidence showing the potential role of a synthetic lethality approach based on the use of two biological processes (autophagy and apoptosis) for platinum-based therapy. This possibility is extremely interesting in tumours with a compromised apoptotic response, one of the main mechanisms of resistance to CDDP, showing a new alternative to the classical approach based on potentiation of CDDP-associated apoptosis. [74, 75]. Furthermore, considering the tumour heterogeneity known to be implicated in the therapeutic response, [76] our approach could overcome this problem as in the case of clones with different status in key molecules as p53.

In summary, we present a novel therapeutic approach to target those tumours in which the apoptotic capability of a given stimulus (CDDP) is not triggered (vg p53-mutant). In this context, the use of compounds with a high potential to trigger autophagy (vg. MonoPt)

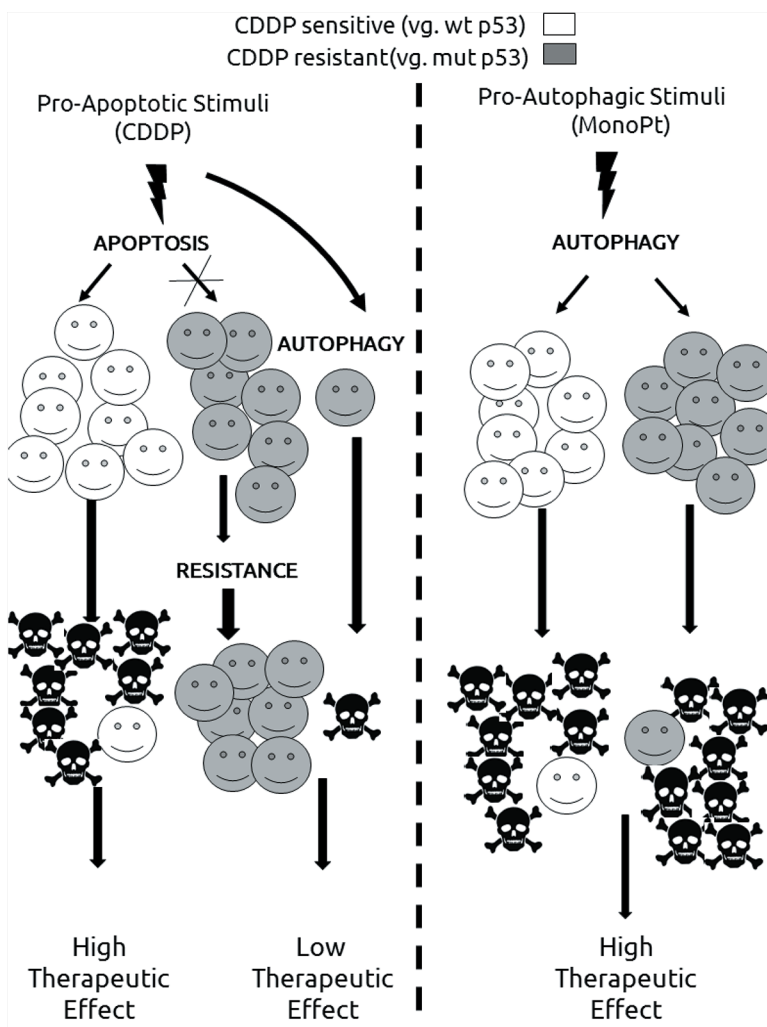


Figure 8: Proposed model for the use of autophagy in cisplatin-resistant tumours.

could induce cell death independently of major molecular determinants (vg p53, MAPKs). Whether our proposed mechanism could apply to other types of tumours, the putative implications in cancer therapy, as well as the role of the different components of this synthetic lethally approach, needs to be further investigated.

MATERIALS AND METHODS

Cell lines and cell culture

H460 and H1299 (non-small-cell lung carcinoma (NSCLC)) cells were purchased from ATCC and maintained in Dulbecco's Modified Eagle's Medium (DMEM) (D6171, Sigma Aldrich), supplemented with 10% foetal bovine serum (F7524, Sigma Aldrich), plus antibiotics (Penicillin, Streptomycin and Amphotericin B) (A5955, Sigma Aldrich) and L-Glutamine (G7513, Sigma Aldrich) at 37°C in a 5% CO₂ atmosphere.

Antibodies and chemicals

Antibodies against LC3 were purchased from Sigma Aldrich (L8918). Antibodies against p62/SQSTM1 (sc-28359), total p38 α (sc-535), total ERK2 (sc-154), p53 (sc-126) and α -Tubulin (sc-32293) are from Santa Cruz Biotechnologies. Antibodies against phosphorylated forms of p38 MAPK (#9215) and ERK1/2 (#4377) and against ATG5 (#2630), Caspase 3 (#9662) and Caspase 9 (#9502) were purchased from Cell Signaling Technologies (CST). Antibodies against Bcl2-family members were the following ones: Bcl-2 (sc-7382, Santa Cruz), Bcl-xL (#2762, CST) and Bcl-w (sc-130701, Santa Cruz). Antibodies used against BH3-only proteins were the following: Noxa (IMG-349A, Imgenex) and Bax (sc-493, Santa Cruz).

Pan-p38 inhibitor BIRB796 (also known as Doramapimod) was purchased from Cayman Chemicals (10640). MEK1/2 inhibitor U0126 (S1102), Akt inhibitor MK2206 (S1078) and BH3 mimetic molecule ABT-263 (S1001) were from Selleckchem. Rapamycin (553210) and 3-methyladenine (3MA) (189490) were purchased from Calbiochem/Merck-Millipore and pan-caspase inhibitor Q-VD was from R&D Systems (OPH001-01M). These chemicals were diluted in DMSO and stored at -20°C (-80°C for U0126 and MK2206) until they were used.

Cis-diamminedichloroplatinum (II) (cisplatin, CDDP) was purchased from Sigma Aldrich (P4394) and diluted in bidistilled water, aliquoted and stored at -20°C until used.

Monoplatin (MonoPt) was synthesized under an inert atmosphere of dry oxygen-free nitrogen using standard Schlenk techniques. Solvents were dried from the appropriate drying agents before use, [77] and stored in presence of 4 Å molecular sieves. FAB+ mass spectrometry measurements were obtained in a Thermo

MAT95XP mass spectrophotometer with magnetic sector. ¹H NMR spectra were recorded at 298K on Varian Gemini FT-400 and Inova FT-500 spectrometers. Chemical shifts (ppm) are relative to tetramethylsilane (¹H NMR). Coupling constants (J) are in Hertz. ¹H-¹H COSY spectra: standard pulse sequence with an acquisition time of 0.214s, pulse width of 10 ms, relaxation delay of 1s, 16 scans, 512 increments. In the NMR analysis, s, d, t, m, and bs denote singlet, doublet, triplet, multiplet, and broad signal, respectively. For the molar conductimetry measurements, the Λ_M values are given in S·cm²·mol⁻¹ and were obtained at room temperature for 10⁻³ M solutions of the corresponding complexes in CH₃CN, using a CRISON 522 conductimeter equipped with a CRISON 5292 platinum conductivity cell. [78] The ligand N-(tert-butoxycarbonyl)-L-methionine-N'-8-quinolylamide was prepared according to literature procedures. [79]. Although the synthesis of the MonoPt complex was described previously, [30] different attempts to follow the reported procedure in our laboratory have resulted in a mixture of products, containing a platinum complex with an unprotected -NH₂ group due, probably, to the Boc cleavage. In order to avoid these problems, and thereby the formation of by-products, the reaction was carried out at 60 °C in the presence of two equivalents of K₂CO₃, resulting in a new dimeric platinum complex (Di-Pt) that was obtained as pure in good yield. In a second step, the hydrolysis of Di-Pt with HCl leads to MonoPt as a pure compound. Synthesis of Di-Pt is explained in Supplementary Figure 4. [79] MonoPt was diluted in DMSO and stored at -20°C as previously described. [30]

Survival and viability assays

An initial population of 2·10⁴ cells/well was seeded in 24-well plates. 24 hours after, media were discarded and replaced by media containing either drugs, inhibitors or both of them at the concentrations indicated in each case. After treatment (48 hours unless otherwise is indicated), survival or viability were assessed either by crystal violet method or by MTT respectively. For crystal violet, cells were washed with PBS and incubated with crystal violet reactant (C3886, Sigma Aldrich) (10 mg/ml in a distilled water-0.5% glutaraldehyde solution) for 20 min at room temperature in mild rocking. The dye was washed in running water and colorant was recovered with 10% acetic acid and transferred to transparent 96-well plates for optical density evaluation at 595 nm. MTT assays were carried out as follows: MTT reactant (Thiazolyl Blue Tetrazolium Bromide, M2128, Sigma Aldrich), at 5mg/ml in a PBS solution, was added to the cells in a 1:10 ratio (MTT solution:culture medium) and left for incubation during 1 h at 37°C. Then, media were discarded and formazan crystals adhered to the plate bottom were recovered with DMSO and transferred to a transparent 96-well plate for optical density evaluation at 570 nm.

Apoptosis assays

For caspase activation assays, cells were plated at a density of 10^4 cells/well in opaque 96-well plates 24 hours prior to treatment. 24 hours after treatment, activation of effector caspases 3 and 7 was evaluated with Promega's CaspaseGlo kit (G8090) following manufacturer's instructions. Resulting mixtures were quantified after 30 minutes of incubation at room temperature in a Beckton Dickinson BD 3096 luminometer.

For Annexin V/Propidium Iodide cytometry assays, cells were seeded in 60-mm culture plates for a final population of 70% confluence. After treatments, cells were collected by trypsinization at the indicated times, pelleted and washed twice with ice-cold PBS. A kit from Immunostep (ANXVF-200T, BB10X-50ML and "PI") was used for FITC-AnnexinV and Propidium Iodide staining following manufacturer's instructions. Experiments were checked for fluorescence in both green and red channels in a MACSQuant Analyzer 10 cytometer from MACS/Miltenyi Biotec. Dot plot corresponds to data obtained from a representative experiment out of three. Grouped column charts are the average of, at least, 3 independent experiments.

Irradiation

Cells were irradiated in a Clinac Low Energy 600C linear electron accelerator from Varian by the technical staff of the University Hospital Complex of Albacete according to the indications described elsewhere. [80] For dose-response assays, $3 \cdot 10^3$ cells/well were seeded in 24-well plates 24 hours prior to irradiation. Culture medium was replaced 24 hours after IR and refreshed every 2 days until the end of the experiment (6 days). Viability was evaluated by the crystal violet method.

Western blotting

Western blot assays were performed following standard procedures. [26, 80] Briefly, cells were collected in lysis buffer (25 mM HEPES pH 7.5, 0.3 M NaCl, 1.5 mM MgCl₂, 0.2 mM EDTA, 1% Triton X-100, 0.1% SDS, 0.5% deoxycholic acid, 20 mM β -glycerophosphate) plus protease and phosphatase inhibitors (2 μ g/ml leupeptin, 2 μ g/ml aprotinin, 1 mM PMSF and 0.1 mM Na₃VO₄) by using 40 μ g of total cell lysates. α -Tubulin was used as a loading controls. Images show a representative experiment out of 3 with nearly identical results.

shRNA knock-down assays, lentiviral production and infections

Plasmids codifying for short hairpin RNA (shRNA) against Atg5 were purchased from Sigma-Aldrich (SHCLNG-NM_004849). Prior to the experiments, the

best performing shRNA clone was selected as judged by western blot against endogenous ATG5.

Lentiviral production and infections were as follows: HEK 293T cells were cotransfected with pSAXS (helper plasmid) and pVSV-G (envelope plasmid) lentiviral vectors along with either pLKO-puro-shATG5 or pLKO-puro empty vector (SHC001, Sigma-Aldrich) plasmids. Host cells were infected by adding packaging cells' media in the presence of 4 μ g/ml polybrene from Sigma-Aldrich (H9268). 48 hours after infection cells were exposed to puromycin (ant-pr-1, Invivogene): 2 μ g/ml for H460 and 3 μ g/ml for H1299 cells, for at least 3 days before any assay. Infected cells were routinely maintained at the appropriate concentrations of puromycin.

Tranfections

H1299 cells were transfected with pEX-GFP-hLC3wt or pEX-GFP-hLC3 Δ G120 previously described, by using Lipofectamine LTX from Invitrogen (#15338500) following manufacturer's instructions. 48 hours later, cells were selected by using G-418 from Sigma-Aldrich (A1720) at 800 μ g/ml for at least 10 days. Then, selected pools were treated and analysed as indicated in Zeiss LSM-710 confocal microscope. Images were acquired and processed using Zen 2009 Light Edition software. Images show a representative fields out of 8. The scale bars represent 25 μ m.

Data analysis

Results are represented as mean \pm SEM (Standard Error of the Mean) of, at least, three independent experiments performed in triplicate. Statistical analysis was performed using the Prism 5.00 software (GraphPad) and Office Excel 2013 (Microsoft). Significance was determined using a *t*-test. The statistical significance of differences is indicated in Figures by asterisks as follows:

* $p < 0.05$; ** $p < 0.01$; and *** $p < 0.001$.

ACKNOWLEDGMENTS

We appreciate the comment and suggestions of Drs FX Pimentel and E Knetch.

Abbreviations

Cisplatin (CDDP); Monoplatin (MonoPt); Mitogen Activated Protein Kinase (MAPK); dimethyl sulfoxide (DMSO); 3-Methyladenine (3MA); wild type (wt).

FUNDING

This work was supported by grants from Fundaci3n Leticia Castillejo Castillo and Ministerio de Econom3a y

Competitividad (grant SAF2012-30862 to RSP and grant CTQ2011-24434 to FAJ). RSP Research Institute, and the work carried out in his laboratory receive support from the European Community through the regional development funding program (FEDER). JGC received funding from the Regional Ministry of Education and Science of Castilla-La Mancha (FPI-JCCM) and from Fundación Leticia Castillejo Castillo. MCC and RSP have a contract from the INCRECYT program.

CONFLICTS OF INTEREST

Authors declare that there are no competing interests in conflict with this paper.

Editorial note

This paper has been accepted based in part on peer-review conducted by another journal and the authors' response and revisions as well as expedited peer-review in Oncotarget.

REFERENCES

1. Dasari S, Tchounwou PB. Cisplatin in cancer therapy: molecular mechanisms of action. *Eur J Pharmacol.* 2014; 740:364–378.
2. Siddik ZH. Cisplatin: mode of cytotoxic action and molecular basis of resistance. *Oncogene.* 2003; 22:7265–7279.
3. O'Grady S, Finn SP, Cuffe S, Richard DJ, O'Byrne KJ, Barr MP. The role of DNA repair pathways in cisplatin resistant lung cancer. *Cancer Treat Rev.* 2014; 40:1161–1170.
4. Evans DL, Dive C. Effects of cisplatin on the induction of apoptosis in proliferating hepatoma cells and non-proliferating immature thymocytes. *Cancer Res.* 1993; 53:2133–2139.
5. Galluzzi L, Senovilla L, Vitale I, Michels J, Martins I, Kepp O, Castedo M, Kroemer G. Molecular mechanisms of cisplatin resistance. *Oncogene.* 2012; 31:1869–1883.
6. Kalimutho M, Minutolo A, Grelli S, Formosa A, Sancesario G, Valentini A, Federici G, Bernardini S. Satraplatin (JM-216) mediates G2/M cell cycle arrest and potentiates apoptosis via multiple death pathways in colorectal cancer cells thus overcoming platinum chemo-resistance. *Cancer Chemother Pharmacol.* 2011; 67:1299–1312.
7. Marrache S, Pathak RK, Dhar S. Detouring of cisplatin to access mitochondrial genome for overcoming resistance. *Proc Natl Acad Sci U S A.* 2014; 111:10444–10449.
8. Feng Y, He D, Yao Z, Klionsky DJ. The machinery of macroautophagy. *Cell Res.* 2014; 24:24–41.
9. Thorburn A, Thamm DH, Gustafson DL. Autophagy and cancer therapy. *Mol Pharmacol.* 2014; 85:830–838.
10. Santulli G, Totary-Jain H. Tailoring mTOR-based therapy: molecular evidence and clinical challenges. *Pharmacogenomics.* 2013; 14:1517–1526.
11. De la Cruz-Morcillo MA, Valero MLL, Callejas-Valera JL, Arias-González L, Melgar-Rojas P, Galán-Moya EM, García-Gil E, García-Cano J, Sánchez-Prieto R. P38MAPK is a major determinant of the balance between apoptosis and autophagy triggered by 5-fluorouracil: implication in resistance. *Oncogene.* 2012; 31:1073–1085.
12. Huang J, Ni J, Liu K, Yu Y, Xie M, Kang R, Vernon P, Cao L, Tang D. HMGB1 promotes drug resistance in osteosarcoma. *Cancer Res.* 2012; 72:230–238.
13. Apel A, Herr I, Schwarz H, Rodemann HP, Mayer A. Blocked autophagy sensitizes resistant carcinoma cells to radiation therapy. *Cancer Res.* 2008; 68:1485–1494.
14. Shi Y-H, Ding Z-B, Zhou J, Hui B, Shi G-M, Ke A-W, Wang X-Y, Dai Z, Peng Y-F, Gu C-Y, Qiu S-J, Fan J. Targeting autophagy enhances sorafenib lethality for hepatocellular carcinoma via ER stress-related apoptosis. *Autophagy.* 2011; 7:1159–1172.
15. Tai W-T, Shiau C-W, Chen H-L, Liu C-Y, Lin C-S, Cheng A-L, Chen P-J, Chen K-F. Mcl-1-dependent activation of Beclin 1 mediates autophagic cell death induced by sorafenib and SC-59 in hepatocellular carcinoma cells. *Cell Death Dis.* 2013; 4:e485.
16. Kimura T, Takabatake Y, Takahashi A, Isaka Y. Chloroquine in cancer therapy: a double-edged sword of autophagy. *Cancer Res.* 2013; 73:3–7.
17. Hippert MM, O'Toole PS, Thorburn A. Autophagy in cancer: good, bad, or both?. *Cancer Res.* 2006; 66:9349–9351.
18. Gewirtz DA. The four faces of autophagy: implications for cancer therapy. *Cancer Res.* 2014; 74:647–651.
19. Galan-Moya EM, de la Cruz-Morcillo MA, Llanos Valero M, Callejas-Valera JL, Melgar-Rojas P, Hernandez Losa J, Salcedo M, Fernández-Aramburo A, Ramon y Cajal S, Sánchez-Prieto R. Balance between MKK6 and MKK3 mediates p38 MAPK associated resistance to cisplatin in NSCLC. *PLoS One.* 2011; 6:e28406.
20. Caserta TM, Smith AN, Gultice AD, Reedy MA, Brown TL. Q-VD-OPh, a broad spectrum caspase inhibitor with potent antiapoptotic properties. *Apoptosis Int J Program Cell Death.* 2003; 8:345–352.
21. Rogers PM, Beale PJ, Al-Moundhri M, Boxall F, Patterson L, Valenti M, Raynaud F, Hobbs S, Johnston S, Kelland LR. Overexpression of BclXL in a human ovarian carcinoma cell line: paradoxical effects on chemosensitivity *in vitro* versus *in vivo*. *Int J Cancer J Int Cancer.* 2002; 97:858–863.
22. Tse C, Shoemaker AR, Adickes J, Anderson MG, Chen J, Jin S, Johnson EF, Marsh KC, Mitten MJ, Nimmer P, Roberts L, Tahir SK, et al. ABT-263: a potent and orally bioavailable Bcl-2 family inhibitor. *Cancer Res.* 2008; 68:3421–3428.

23. O'Donovan TR, O'Sullivan GC, McKenna SL. Induction of autophagy by drug-resistant esophageal cancer cells promotes their survival and recovery following treatment with chemotherapeutics. *Autophagy*. 2011; 7:509–524.
24. Zhang Y, Cheng Y, Ren X, Zhang L, Yap KL, Wu H, Patel R, Liu D, Qin Z-H, Shih I-M. NAC1 modulates sensitivity of ovarian cancer cells to cisplatin by altering the HMGB1-mediated autophagic response. *Oncogene*. 2012; 31:1055–1064.
25. Claerhout S, Verschooten L, Van Kelst S, De Vos R, Proby C, Agostinis P, Garmyn M. Concomitant inhibition of AKT and autophagy is required for efficient cisplatin-induced apoptosis of metastatic skin carcinoma. *Int J Cancer J Int Cancer*. 2010; 127:2790–2803.
26. Klionsky DJ, Abdalla FC, Abeliovich H, Abraham RT, Acevedo-Arozena A, Adeli K, Agholme L, Agnello M, Agostinis P, Aguirre-Ghiso JA, Ahn HJ, Ait-Mohamed O, et al. Guidelines for the use and interpretation of assays for monitoring autophagy. *Autophagy*. 2012; 8:445–544.
27. Seglen PO, Gordon PB. 3-Methyladenine: specific inhibitor of autophagic/lysosomal protein degradation in isolated rat hepatocytes. *Proc Natl Acad Sci U S A*. 1982; 79:1889–1892.
28. Beck JT, Ismail A, Tolomeo C. Targeting the phosphatidylinositol 3-kinase (PI3K)/AKT/mammalian target of rapamycin (mTOR) pathway: an emerging treatment strategy for squamous cell lung carcinoma. *Cancer Treat Rev*. 2014; 40:980–989.
29. Cheng Y, Ren X, Zhang Y, Patel R, Sharma A, Wu H, Robertson GP, Yan L, Rubin E, Yang J-M. eEF-2 kinase dictates cross-talk between autophagy and apoptosis induced by Akt inhibition, thereby modulating cytotoxicity of novel Akt inhibitor MK-2206. *Cancer Res*. 2011; 71:2654–2663.
30. Guo W-J, Zhang Y-M, Zhang L, Huang B, Tao F-F, Chen W, Guo Z-J, Xu Q, Sun Y. Novel monofunctional platinum (II) complex Mono-Pt induces apoptosis-independent autophagic cell death in human ovarian carcinoma cells, distinct from cisplatin. *Autophagy*. 2013; 9:996–1008.
31. Sanchez-Prieto R, Rojas JM, Taya Y, Gutkind JS. A role for the p38 mitogen-activated protein kinase pathway in the transcriptional activation of p53 on genotoxic stress by chemotherapeutic agents. *Cancer Res*. 2000; 60:2464–2472.
32. Rusch V, Klimstra D, Venkatraman E, Oliver J, Martini N, Gralla R, Kris M, Dmitrovsky E. Aberrant p53 expression predicts clinical resistance to cisplatin-based chemotherapy in locally advanced non-small cell lung cancer. *Cancer Res*. 1995; 55:5038–5042.
33. Bunz F, Dutriaux A, Lengauer C, Waldman T, Zhou S, Brown JP, Sedivy JM, Kinzler KW, Vogelstein B. Requirement for p53 and p21 to sustain G2 arrest after DNA damage. *Science*. 1998; 282:1497–1501.
34. Wang X, Martindale JL, Holbrook NJ. Requirement for ERK activation in cisplatin-induced apoptosis. *J Biol Chem*. 2000; 275:39435–39443.
35. Hernández Losa J, Parada Cobo C, Guinea Viniegra J, Sánchez-Arevalo Lobo VJ, Ramón y Cajal S, Sánchez-Prieto R. Role of the p38 MAPK pathway in cisplatin-based therapy. *Oncogene*. 2003; 22:3998–4006.
36. Kuma Y, Sabio G, Bain J, Shpiro N, Márquez R, Cuenda A. BIRB796 inhibits all p38 MAPK isoforms *in vitro* and *in vivo*. *J Biol Chem*. 2005; 280:19472–19479.
37. Favata MF, Horiuchi KY, Manos EJ, Daulerio AJ, Stradley DA, Feeser WS, Van Dyk DE, Pitts WJ, Earl RA, Hobbs F, Copeland RA, Magolda RL, et al. Identification of a novel inhibitor of mitogen-activated protein kinase kinase. *J Biol Chem*. 1998; 273:18623–18632.
38. Hopkins-Donaldson S, Cathomas R, Simões-Wüst AP, Kurtz S, Belyanskaya L, Stahel RA, Zangemeister-Wittke U, Belyanskaya L. Induction of apoptosis and chemosensitization of mesothelioma cells by Bcl-2 and Bcl-xL antisense treatment. *Int J Cancer J Int Cancer*. 2003; 106:160–166.
39. Farrand L, Oh S-W, Song YS, Tsang BK. Phytochemicals: a multitargeted approach to gynecologic cancer therapy. *BioMed Res Int*. 2014; 2014:890141.
40. Tufo G, Jones AWE, Wang Z, Hamelin J, Tajeddine N, Esposti DD, Martel C, Boursier C, Gallerne C, Migdal C, Lemaire C, Szabadkai G, et al. The protein disulfide isomerases PDIA4 and PDIA6 mediate resistance to cisplatin-induced cell death in lung adenocarcinoma. *Cell Death Differ*. 2014; 21:685–695.
41. Bauer JA, Trask DK, Kumar B, Los G, Castro J, Lee JS-J, Chen J, Wang S, Bradford CR, Carey TE. Reversal of cisplatin resistance with a BH3 mimetic, (-)-gossypol, in head and neck cancer cells: role of wild-type p53 and Bcl-xL. *Mol Cancer Ther*. 2005; 4:1096–1104.
42. Michels J, Obrist F, Vitale I, Lissa D, Garcia P, Behnam-Motlagh P, Kohno K, Wu GS, Brenner C, Castedo M, Kroemer G. MCL-1 dependency of cisplatin-resistant cancer cells. *Biochem Pharmacol*. 2014; 92:55–61.
43. Wang J, Wu GS. Role of autophagy in cisplatin resistance in ovarian cancer cells. *J Biol Chem*. 2014; 289:17163–17173.
44. Kaminsky VO, Piskunova T, Zborovskaya IB, Tchevkina EM, Zhivotovsky B. Suppression of basal autophagy reduces lung cancer cell proliferation and enhances caspase-dependent and -independent apoptosis by stimulating ROS formation. *Autophagy*. 2012; 8:1032–1044.
45. Bao L, Jaramillo MC, Zhang Z, Zheng Y, Yao M, Zhang DD, Yi X. Induction of autophagy contributes to cisplatin resistance in human ovarian cancer cells. *Mol Med Rep*. 2015; 11:91–98.
46. Pennati M, Lopergolo A, Profumo V, De Cesare M, Sbarra S, Valdagni R, Zaffaroni N, Gandellini P, Folini M. miR-205 impairs the autophagic flux and enhances cisplatin cytotoxicity in castration-resistant prostate cancer cells. *Biochem Pharmacol*. 2014; 87:579–597.
47. Li N, Li X, Li S, Zhou S, Zhou Q. Cisplatin-induced down-regulation of SOX1 increases drug resistance by activating

- autophagy in non-small cell lung cancer cell. *Biochem Biophys Res Commun.* 2013; 439:187–190.
48. Ren J-H, He W-S, Nong L, Zhu Q-Y, Hu K, Zhang R-G, Huang L-L, Zhu F, Wu G. Acquired cisplatin resistance in human lung adenocarcinoma cells is associated with enhanced autophagy. *Cancer Biother Radiopharm.* 2010; 25:75–80.
 49. Liu M, Ma S, Liu M, Hou Y, Liang B, Su X, Liu X. Synergistic killing of lung cancer cells by cisplatin and radiation via autophagy and apoptosis. *Oncol Lett.* 2014; 7:1903–1910.
 50. Yu L, Gu C, Zhong D, Shi L, Kong Y, Zhou Z, Liu S. Induction of autophagy counteracts the anticancer effect of cisplatin in human esophageal cancer cells with acquired drug resistance. *Cancer Lett.* 2014; 355:34–45.
 51. Ge J, Chen Z, Huang J, Chen J, Yuan W, Deng Z, Chen Z. Upregulation of autophagy-related gene-5 (ATG-5) is associated with chemoresistance in human gastric cancer. *PLoS One.* 2014; 9:e110293.
 52. Toulany M, Mihatsch J, Holler M, Chaachouay H, Rodemann HP. Cisplatin-mediated radiosensitization of non-small cell lung cancer cells is stimulated by ATM inhibition. *Radiother Oncol J Eur Soc Ther Radiol Oncol.* 2014; 111:228–236.
 53. Zhang H-Q, He B, Fang N, Lu S, Liao Y-Q, Wan Y-Y. Autophagy inhibition sensitizes cisplatin cytotoxicity in human gastric cancer cell line SGC7901. *Asian Pac J Cancer Prev APJCP.* 2013; 14:4685–4688.
 54. Xu Y, Yu H, Qin H, Kang J, Yu C, Zhong J, Su J, Li H, Sun L. Inhibition of autophagy enhances cisplatin cytotoxicity through endoplasmic reticulum stress in human cervical cancer cells. *Cancer Lett.* 2012; 314:232–243.
 55. Guo X-L, Li D, Sun K, Wang J, Liu Y, Song J-R, Zhao Q-D, Zhang S-S, Deng W-J, Zhao X, Wu M-C, Wei L-X. Inhibition of autophagy enhances anticancer effects of bevacizumab in hepatocarcinoma. *J Mol Med Berl Ger.* 2013; 91:473–483.
 56. Maycotte P, Aryal S, Cummings CT, Thorburn J, Morgan MJ, Thorburn A. Chloroquine sensitizes breast cancer cells to chemotherapy independent of autophagy. *Autophagy.* 2012; 8:200–212.
 57. Sheng Y, Sun B, Guo W-T, Zhang Y-H, Liu X, Xing Y, Dong D-L. 3-Methyladenine induces cell death and its interaction with chemotherapeutic drugs is independent of autophagy. *Biochem Biophys Res Commun.* 2013; 432:5–9.
 58. Pan H, Shen K, Wang X, Meng H, Wang C, Jin B. Protective effect of metalloporphyrins against cisplatin-induced kidney injury in mice. *PLoS One.* 2014; 9:e86057.
 59. Sirichanchuen B, Pengsuparp T, Chanvorachote P. Long-term cisplatin exposure impairs autophagy and causes cisplatin resistance in human lung cancer cells. *Mol Cell Biochem.* 2012; 364:11–18.
 60. Andreu-Fernández V, Genovés A, Messeguer A, Orzáez M, Sancho M, Pérez-Payá E. BH3-mimetics- and cisplatin-induced cell death proceeds through different pathways depending on the availability of death-related cellular components. *PLoS One.* 2013; 8:e56881.
 61. Sharma K, Le N, Alotaibi M, Gewirtz DA. Cytotoxic autophagy in cancer therapy. *Int J Mol Sci.* 2014; 15:10034–10051.
 62. Mandic R, Schamberger CJ, Müller JF, Geyer M, Zhu L, Carey TE, Grénman R, Dünne AA, Werner JA. Reduced cisplatin sensitivity of head and neck squamous cell carcinoma cell lines correlates with mutations affecting the COOH-terminal nuclear localization signal of p53. *Clin Cancer Res Off J Am Assoc Cancer Res.* 2005; 11:6845–6852.
 63. Perrone F, Bossi P, Cortelazzi B, Locati L, Quattrone P, Pierotti MA, Pilotti S, Licitra L. TP53 mutations and pathologic complete response to neoadjuvant cisplatin and fluorouracil chemotherapy in resected oral cavity squamous cell carcinoma. *J Clin Oncol Off J Am Soc Clin Oncol.* 2010; 28:761–766.
 64. Morandell S, Reinhardt HC, Cannell IG, Kim JS, Ruf DM, Mitra T, Couvillon AD, Jacks T, Yaffe MB. A reversible gene-targeting strategy identifies synthetic lethal interactions between MK2 and p53 in the DNA damage response *in vivo*. *Cell Rep.* 2013; 5:868–877.
 65. Osman AA, Monroe MM, Ortega Alves MV, Patel AA, Katsonis P, Fitzgerald AL, Neskey DM, Frederick MJ, Woo SH, Caulin C, Hsu T-K, McDonald TO, et al. Wee-1 Kinase Inhibition Overcomes Cisplatin Resistance Associated with High-Risk TP53 Mutations in Head and Neck Cancer through Mitotic Arrest Followed by Senescence. *Mol Cancer Ther.* 2015; 14:608–619.
 66. Pereira L, Igea A, Canovas B, Dolado I, Nebreda AR. Inhibition of p38 MAPK sensitizes tumour cells to cisplatin-induced apoptosis mediated by reactive oxygen species and JNK. *EMBO Mol Med.* 2013; 5:1759–1774.
 67. Nijman SMB. Synthetic lethality: general principles, utility and detection using genetic screens in human cells. *FEBS Lett.* 2011; 585:1–6.
 68. McLornan DP, List A, Mufti GJ. Applying synthetic lethality for the selective targeting of cancer. *N Engl J Med.* 2014; 371:1725–1735.
 69. Fece de la Cruz F, Gapp BV, Nijman SMB. Synthetic lethal vulnerabilities of cancer. *Annu Rev Pharmacol Toxicol.* 2015; 55:513–531.
 70. Clark CC, Weitzel JN, O'Connor TR. Enhancement of synthetic lethality via combinations of ABT-888, a PARP inhibitor, and carboplatin *in vitro* and *in vivo* using BRCA1 and BRCA2 isogenic models. *Mol Cancer Ther.* 2012; 11:1948–1958.
 71. Sultana R, Abdel-Fatah T, Perry C, Moseley P, Albarakti N, Mohan V, Seedhouse C, Chan S, Madhusudan S. Ataxia telangiectasia mutated and Rad3 related (ATR) protein kinase inhibition is synthetically lethal in XRCC1 deficient ovarian cancer cells. *PLoS One.* 2013; 8:e57098.
 72. Turcotte S, Giaccia AJ. Targeting cancer cells through autophagy for anticancer therapy. *Curr Opin Cell Biol.* 2010; 22:246–251.

73. Reyjal J, Cormier K, Turcotte S. Autophagy and cell death to target cancer cells: exploiting synthetic lethality as cancer therapies. *Adv Exp Med Biol.* 2014; 772:167–188.
74. Gambi N, Tramontano F, Quesada P. Poly(ADPR)polymerase inhibition and apoptosis induction in cDDP-treated human carcinoma cell lines. *Biochem Pharmacol.* 2008; 75:2356–2363.
75. Tsai WS, Yeow W-S, Chua A, Reddy RM, Nguyen DM, Schrupp DS, Nguyen DM. Enhancement of Apo2L/TRAIL-mediated cytotoxicity in esophageal cancer cells by cisplatin. *Mol Cancer Ther.* 2006; 5:2977–2990.
76. Meacham CE, Morrison SJ. Tumour heterogeneity and cancer cell plasticity. *Nature.* 2013; 501:328–337.
77. Armarego, W.L.F.; Chai, C.L.L. *Purification of Laboratory Chemicals.* 5th Edition. Butterworth-Heinemann-Elsevier; 2013.
78. Geary WJ. The use of conductivity measurements in organic solvents for the characterisation of coordination compounds. *Coord Chem Rev.* 1971; 7:81–122.
79. Zhang J, Wang X, Tu C, Lin J, Ding J, Lin L, Wang Z, He C, Yan C, You X, Guo Z. Monofunctional platinum complexes showing potent cytotoxicity against human liver carcinoma cell line BEL-7402. *J Med Chem.* 2003; 46:3502–3507.
80. De la Cruz-Morcillo MA, García-Cano J, Arias-González L, García-Gil E, Artacho-Cordón F, Ríos-Arrabal S, Valero ML, Cimas FJ, Serrano-Oviedo L, Villas MV, Romero-Fernández J, Núñez MI, et al. Abrogation of the p38 MAPK α signaling pathway does not promote radioresistance but its activity is required for 5-Fluorouracil-associated radiosensitivity. *Cancer Lett.* 2013; 335:66–74.