

RESEARCH

Open Access



# Sex differences in associations between maternal deprivation and alterations in hippocampal calcium-binding proteins and cognitive functions in rats

Hongyu Xu<sup>1†</sup>, Yuqin Ye<sup>1,3†</sup>, Yelu Hao<sup>1†</sup>, Fei Shi<sup>2†</sup>, Zhiqiang Yan<sup>1</sup>, Guohao Yuan<sup>1</sup>, Yuefan Yang<sup>1</sup>, Zhou Fei<sup>1\*</sup> and Xiaosheng He<sup>1\*</sup>

## Abstract

**Background and objective:** Adverse early-life experiences have been suggested as one of the key contributors to neurodevelopmental disorders, such that these experiences influence brain development, cognitive ability and mental health. Previous studies indicated that hippocampal levels of the calcium-binding proteins calretinin (CALR) and calbindin-D28k (CALB) changed in response to maternal deprivation (MD), a model for adverse early-life experiences. We investigated the effects of MD on hippocampal CALR and CALB protein levels and cognitive behaviors, and explored whether these effects were sex-related.

**Methods:** From postnatal day 2 (PND-2) to PND-14, rat pups in the MD group were separated from their mothers for 3 h/day for comparison with pups raised normally (control). To determine hippocampal CALR and CALB levels, fluorescent immunostaining of hippocampal sections and Western blot analysis of hippocampal tissues were employed at various timepoints (PND-21, -25, -30, -35 and -40). Behavioral and cognitive changes were determined by open field test (PND-21) and Morris water maze (PND-25).

**Results:** Western blot analysis showed changes in the hippocampal CALR and CALB levels in both male and female MD groups, compared with controls. The open field test showed reduced exploration only in male MD groups but not female MD groups. The Morris water maze tests indicated that MD caused spatial memory impairment both in male and female rats, but there was a sex difference in CALR and CALB levels.

**Conclusions:** Male rats are relatively more vulnerable to MD stress than female rats, but both male and female rats demonstrate spatial learning impairment after exposure to MD stress. Sex difference in CALR and CALB levels may reveal the different mechanisms behind the behavioral observations.

**Keywords:** Maternal deprivation, Hippocampus, Calretinin, Calbindin-D28k, Cognitive functions, MWM test

\*Correspondence: feizhou@fmmu.edu.cn; hexiaos@fmmu.edu.cn

<sup>†</sup>Hongyu Xu, Yuqin Ye, Yelu Hao and Fei Shi contributed equally to this work

<sup>1</sup> Department of Neurosurgery, Xijing Hospital, Fourth Military Medical University, Xi'an, China

Full list of author information is available at the end of the article



## Background

Neurodevelopmental disorders refer to disorders of cognitive, motor, emotional and memory functions that originated from atypical development of the brain, and affect a large percentage of the population worldwide [1–3]. The most common neurodevelopmental disorders are attention-deficit/hyperactivity disorder (ADHD) and autism spectrum disorder (ASD), which mostly occur during the early years of life [4, 5]. Epidemiology studies from different countries have shown that the incidence and prevalence of ADHD and ASD has increased during recent decades [6–10].

Early life experiences have a profound influence on the development of the central nervous system (CNS) and endocrine system, and have been suggested as a key contributor to neurodevelopmental disorders [11, 12]. Adverse life events during early life have been shown to lead to changes in the hypothalamic–pituitary–adrenal (HPA) axis and cause high-anxiety-like behavior and memory impairment [12–15]. The effects can even persist throughout life [16, 17].

An important early life experience is mother-infant interaction. The quality of caregiving by the mother is a key regulator of the HPA axis neuroplasticity in the neonatal period, and is therefore very important for brain maturation and development [18–22]. Long separation from the mother, or maternal deprivation (MD), is a potent stressor during postnatal development. MD is detrimental to stress resistance [13, 22] and can result in permanent deficits [23, 24]. MD of experimental animals is now widely used as a model for postnatal stress. Examples of behavioral changes associated with MD that can persist into adulthood include anxiety, personality disorders, schizophrenia, depression, anhedonia, and memory deficits [25–28]. Previous studies have also shown that male and female rats respond differently to MD [28, 29].

The hippocampus is involved in learning and memory, behavioral adaptation, and regulation of the HPA axis system, and is particularly sensitive to stress [30]. We and others have shown that MD caused functional changes of the hippocampus, and alterations in the hippocampal levels of various proteins such as calretinin (CALR) and calbindin-D28k (CALB) [31, 32]. CALR and CALB are calcium-binding proteins that are widely present in the central nervous system, function to modulate intracellular calcium concentration and neuronal excitability [33, 34], and are important for neurogenesis and neuronal survival. Studies with transgenic mice have shown that CALR and CALB also have a role in neuronal firing and regulate synaptic plasticity [33, 35, 36]. Of particular note here is that hippocampal levels of CALR and CALB are affected by MD in both sexes, but males and females may respond differently to MD stress [32]. However, the

sex-specific effect of MD on cognitive functions, and the related roles of hippocampal CALR and CALB are not fully understood.

In the present study, we utilized MD as a paradigm of early-life stress to study the response of brain functions to early adverse events, and investigated the sex-specific changes in hippocampal protein levels and cognitive functions related to stress in early life.

## Methods

### Ethics statement and animal handling

All experimental procedures were performed in accordance with the Guidelines for the Care and Use of Laboratory Animals of the European Communities Council Directive of 24 November 1986 (86/609/EEC) and were approved by the Ethics Committee of Fourth Military Medical University (Approval ID XJYYLL-2015251).

Pregnant Sprague–Dawley rats were obtained from the Animal Breeding and Research Center of the Fourth Military Medical University (Xi'an, China) and housed at  $21 \pm 1$  °C,  $55 \pm 5\%$  humidity, and 12-h light/dark cycle in single cages ( $40 \times 25 \times 20$  cm). The pregnant rats were checked for litters daily. Postnatal day zero (PND-0) was defined as the day of birth. All pups were weaned on PND-21 and subsequently housed in sex-matched groups of 8 rats per cage.

### Maternal deprivation procedure

From PND-2 to PND-14, rat pups of each litter (50 in total, 25 males and 25 females) in the MD group were separated from their home cages (and mothers) at 9:00 a.m. and maintained for 3 h in a single box. Electric heating plates were used to compensate for the loss of the mother's body heat ( $32 \pm 1$  °C). No food or water was provided during the separation time. They were returned to their mother immediately at noon the same day. Rats in the control group (48 in total, 24 males and 24 females) were left undisturbed with their mother until PND-21.

### Open field test

On PND-21, six rats from each group (the male MD group, the male control group, the female MD group, and the female control group) were randomly chosen for the open field test. The arena we used is rectangular, and made of wood. The wall height is 40 cm. To minimize background stress, we transported the rats to the testing room  $\geq 1$  h prior to testing to allow the rats to acclimate to the experimental room. Each trial took 5 min. After each session, the apparatus was cleaned with 40% ethanol to remove the smell left by the previous rat. All data were recorded with a computerized tracking system (Ethovision 1.90, Noldus IT, Netherlands).

### Morris water maze test

On PND-25, eight rats from each group (the male MD group, the male control group, the female MD group, and the female control group) were randomly chosen for the Morris water maze (MWM) test. The apparatus is consisted of a circular water tank (160 cm in diameter and 45 cm in height), containing water ( $22 \pm 2$  °C) to a depth of 30 cm, which was rendered opaque by adding black food dye. A platform (9 cm diameter, 29 cm height) was submerged 1 cm below the water surface and placed at the midpoint of one quadrant. The swim-route was recorded by a video camera connected to a video analysis system (DigBeh-MR, Shanghai Auspicious Software Technology, China). Each rat underwent four trials per day for five consecutive days. The time durations for escape latency (interval required for the rat to find the submerged escape platform), platform crossing, and swim speed were recorded.

### Immunofluorescence

On PND-21, four rats that were randomly chosen from each group (the male MD group, the male control group, the female MD group, and the female control group), were deeply anesthetized with a pentobarbital solution (50 mg/kg/w, Sigma, USA). Transcardial perfusion was performed with a saline solution, and then with 4% paraformaldehyde (in 0.1 M sodium phosphate buffer, pH 7.4). The brains were post-fixed overnight, cryoprotected, frozen at  $-80$  °C, and sectioned with a cryostat in series (10  $\mu$ m thick). Before blocking, free-floating sections were first treated with 1%  $H_2O_2$  for 15 min and washed 3 $\times$  with phosphate buffered saline. After incubation in blocking buffer (0.3% Triton X-100/5% normal serum in phosphate buffered saline) for 1 h, the sections were placed in primary antibody solution overnight at 4 °C. The following primary antibodies were used in series: rabbit anti-CALR antibody (1: 200, Millipore), and rabbit anti-CALB antibody (1: 200, Millipore). The secondary antibody was goat anti-rabbit (1:500, Santa Cruz). Sections were analyzed with a fluorescence microscope (DP70, Olympus, Japan).

### Western blot

We used western blot on PND-21, -25, -30, -35 and -40 in the MD and control rats to determine hippocampal levels of CALR and CALB. Hippocampal tissues were homogenized in buffer containing 50 mM Tris, 150 mM NaCl, 0.1% sodium dodecyl sulfate (SDS), 1% NP-40, 0.5% sodium deoxycholate (pH 8.0) and a protease inhibitor cocktail. This was centrifuged at  $10000\times g$  for 10 min at

4 °C. The protein concentrations were determined with a Bio-Rad BCA protein assay kit (Pierce, USA). Protein samples were mixed with 5 $\times$  SDS-PAGE sample buffer and boiled for 5 min. The proteins in the tissue samples (20 or 30  $\mu$ g protein) were resolved via 14% SDS-PAGE and then transferred onto Millipore-Immobilon-P membranes (Millipore, Bedford, MA, USA).

After blocking with 5% nonfat milk in 10 mM Tris and 100 mM NaCl for 1 h at room temperature, the membranes were incubated overnight at 4 °C serially with rabbit anti-CALR antibody (1: 1500; Millipore), rabbit anti-CALB antibody (1: 1500; Millipore), and rabbit anti-actin antibody (1: 1000; Sigma). The next day, the membranes were washed 3 $\times$  and then incubated with a horseradish peroxidase-linked secondary anti-rabbit antibody (1:5000, Santa Cruz, USA). After washing 3 $\times$ , the membranes were visualized with an enhanced chemiluminescence Western blot system (Amersham, Arlington Height, 500 mL). The intensity of the immunoreactive bands was captured using an image analysis system (Fotodyne, Harland, WI, USA). The optical density of the bands was quantified using a Gel-PRO analyzer program (version 4.0).

### Statistical analysis

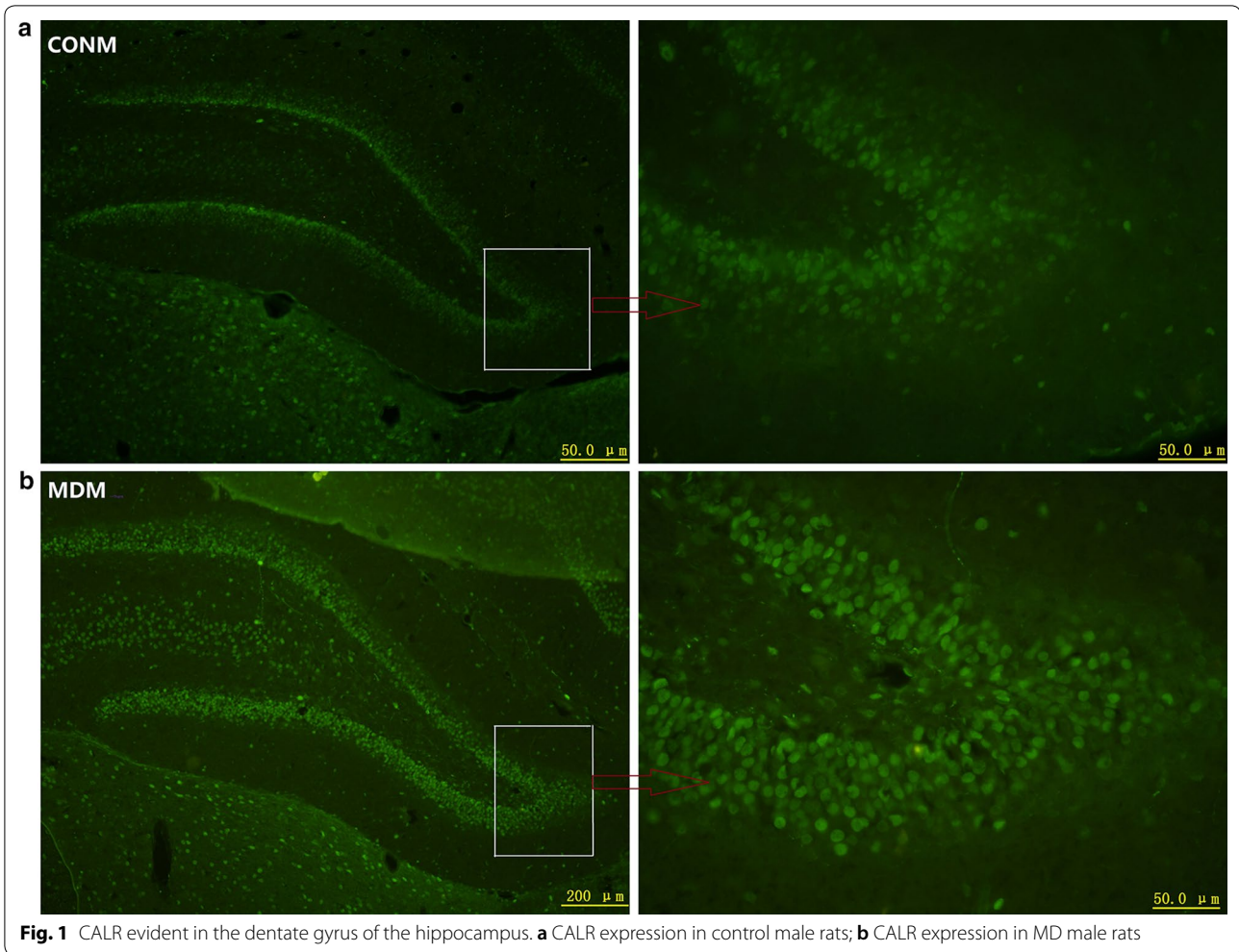
All data were analyzed using SPSS 15.0 software. One-way or 2-way analysis of variance (ANOVA) followed by post hoc analysis (Bonferroni correction) was conducted for multiple comparison with repeated measurements. The graphs were plotted using GraphPad Prism 5.0. Difference were considered significant at  $p < 0.05$ .

## Results

### Hippocampal CALR from PND-21 to PND-35

On PND-21, abundant CALR protein was observed in the dentate gyrus of the hippocampus in both the MD and control groups (Fig. 1). In the male rats of the MD and control groups, the hippocampal CALR levels were at maximum on PND-25 and PND-30, respectively. Two-way ANOVA for CALR level across the timepoints showed significant effects of treatment ( $F_{(1,40)} = 29.78$ ,  $p < 0.001$ ), time ( $F_{(3,40)} = 37.28$ ,  $p < 0.001$ ) and interaction ( $F_{(3,40)} = 15.7$ ,  $p < 0.001$ ). CALR levels in the MD males were much lower than that of the control males on PND-21 and PND-25, but higher on PND-30. However, on PND-35, the CALR levels of the MD and control males were statistically comparable (Fig. 2a, b).

The trends in hippocampal CALR levels described above for the males differed for the females. Two-way ANOVA for CALR level across the timepoints showed



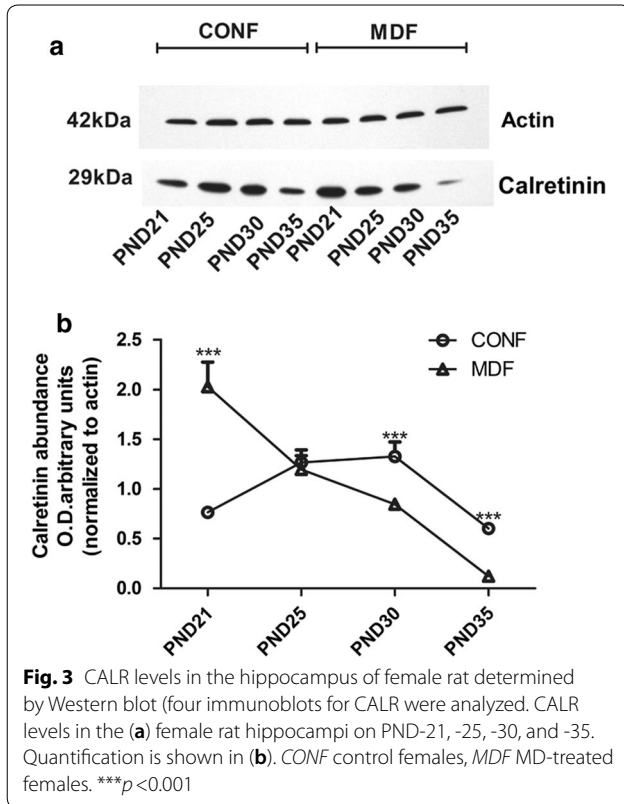
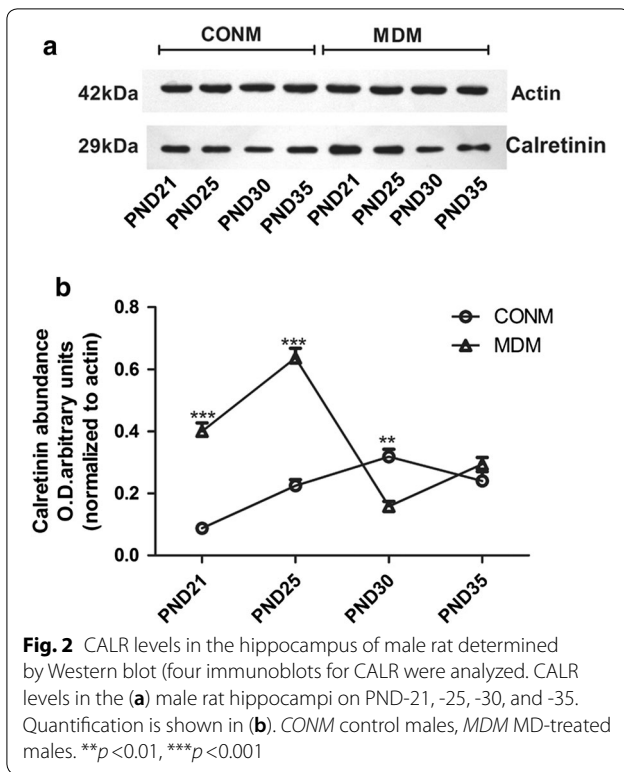
**Fig. 1** CALR evident in the dentate gyrus of the hippocampus. **a** CALR expression in control male rats; **b** CALR expression in MD male rats

significant effects of time ( $F_{(3,40)}=163.05, p<0.001$ ) and interaction ( $F_{(3,40)}=134.11, p<0.001$ ), but the effect of treatment was not significant ( $F_{(1,40)}=2.61, p>0.05$ ). In the female rats of the MD and control groups, the hippocampal CALR levels reached maximum on PND-21 and PND-30, respectively. On PND-25, the CALR levels of the females in the MD group were similar to that of the females in the controls. However, on PND-30 and PND-35, these levels in the MD females were much lower than in the control females (Fig. 3a, b).

#### Hippocampal CALB from PND-21 to PND-35

Similar to CALR protein, CALB protein in the dentate gyrus of the hippocampus was also abundant (Fig. 4). In the male rats, two-way ANOVA for CALR level across the timepoints showed significant effects of time

( $F_{(3,40)}=88.18, p<0.001$ ), treatment ( $F_{(1,40)}=400.49, p<0.001$ ) and interaction ( $F_{(3,40)}=194.81, p<0.001$ ). Like the CALR protein, the CALB levels in the MD males were much higher than that of the control males on PND-21 and PND-25, and lower on PND-30. However, on PND-35, the difference in the CALB levels of the males of the MD and control 2 groups was not significant (Fig. 5a, b). The CALB levels of the females differed from the CALB levels of the males. Two-way ANOVA for CALR level across the timepoints showed significant effects of time ( $F_{(3,40)}=1289.56, p<0.001$ ), treatment ( $F_{(1,40)}=359.99, p<0.001$ ) and interaction ( $F_{(3,40)}=10.06, p<0.001$ ). From PND-21 to PND-35, in the females of both the MD and control groups, the quantity of CALB increased gradually. The level of hippocampal CALB was much higher in the MD females than in the control females on PND-21



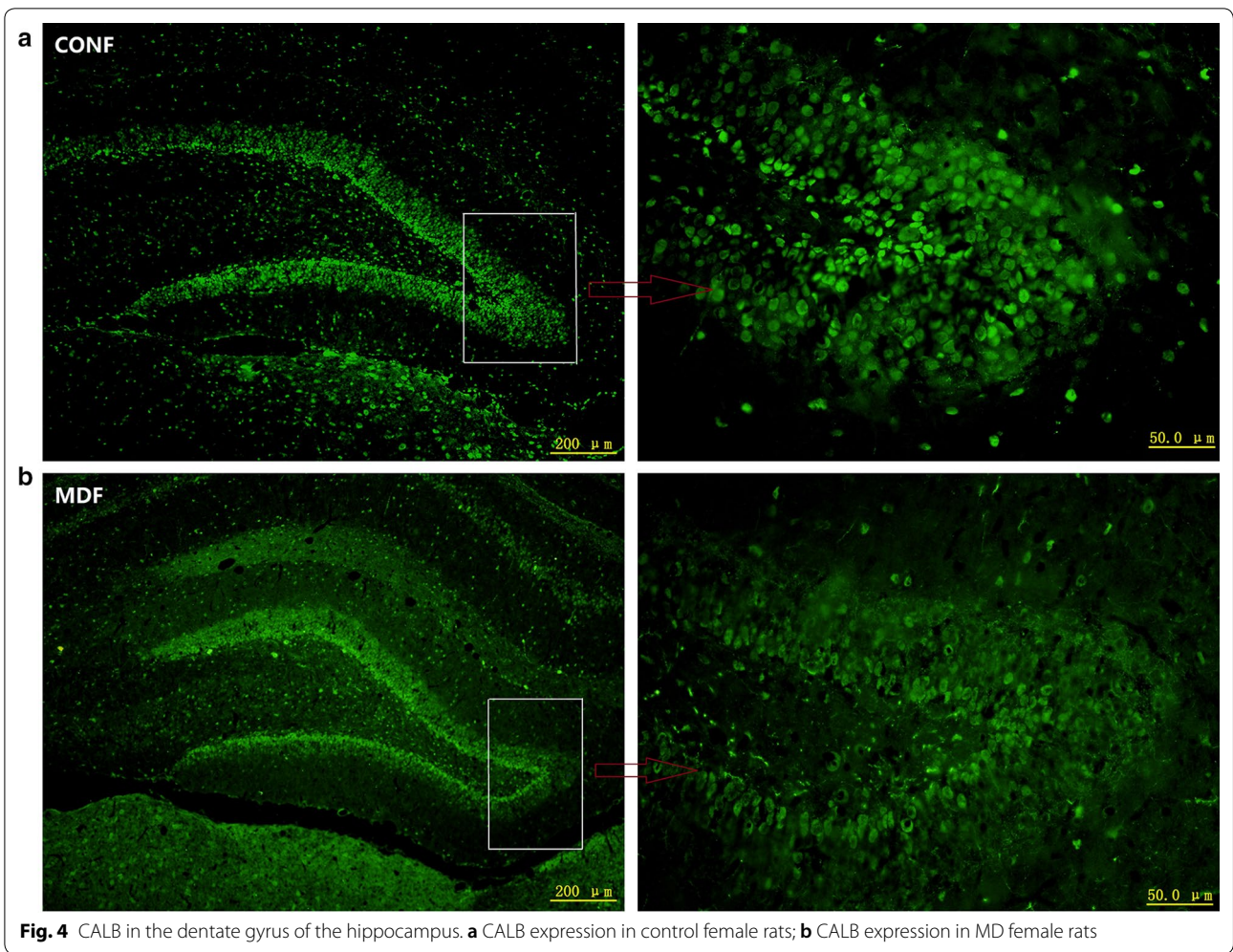
and PND-35, but on PND-25 and PND-30 the 2 groups were similar (Fig. 6a, b).

### Exploring behavior: the open-field test

During the open-field test, there were significant differences between the sexes in total distance moved ( $F_{(1,44)} = 10.66, p < 0.01$ ) and time spent moving ( $F_{(1,44)} = 10.66, p < 0.01$ ; Fig. 7). Male rats in the MD group moved a shorter distance ( $p < 0.01$ ) and with less time spent moving ( $p < 0.05$ ), relative to the males of the control group, but the females of the 2 groups were similar for both features (Fig. 5). Neither the sexes nor the groups differed with regard to the distance (sexes:  $F_{(1,44)} = 0.05, p > 0.05$ ; treatment:  $F_{(1,44)} = 0.28, p > 0.05$ ) and time spent moving (sexes:  $F_{(1,44)} = 0, p > 0.05$ ; treatment:  $F_{(1,44)} = 1.37, p > 0.05$ ) in the center of the open field arena.

### Learning and memory: the MWM test

On PND-25, half of the rats (eight females and eight males from each of the MD and control groups) were randomly chosen for the MWM test. When the analysis was controlled for treatment, two-way ANOVA for latency across the timepoints showed significant effects of time [control group:  $F_{(4,310)} = 360.65, p < 0.001$ , Fig. 8a(1); MD group:  $F_{(4,310)} = 223.97, p < 0.001$ , Fig. 8a(2)] and sex by time interaction (control group:  $F_{(4,310)} = 7.57, p < 0.001$ , Fig. 8a(1); MD group:  $F_{(4,310)} = 3.25, p < 0.001$ , Fig. 8a(2)), but there was no significant effect of sex [control group:  $F_{(1,310)} = 0.24, p > 0.05$ , Fig. 8a(1); MD group:  $F_{(1,310)} = 3.25, p > 0.05$ , Fig. 8a(2)]. However, when the analysis was controlled for sex, repeated two-way ANOVA for latency across the timepoints showed both significant effects of time [male group:  $F_{(4,310)} = 316.16, p < 0.001$ , Fig. 8a(3); female group:  $F_{(4,310)} = 288.75, p < 0.001$ , Fig. 8a(4)], treatment [male group:  $F_{(1,310)} = 35.98, p < 0.001$ , Fig. 8a(3); female group:  $F_{(1,310)} = 44.67, p < 0.001$ , Fig. 8a(4)], and treatment by time interaction [male group:  $F_{(4,310)} = 8.13, p < 0.001$ , Fig. 8a(3); female group:  $F_{(4,310)} = 22.54, p < 0.001$ , Fig. 8a(4)]. Post hoc analysis with Bonferroni correction showed that though male rats of the MD group swam faster significantly [ $p < 0.001$ , Fig. 8b(3)], they also swam much longer distance [ $p < 0.001$ , Fig. 8c(3)], so they still spent more time finding the escape platform than the male rats of the control group on the first day [ $p < 0.05$ , Fig. 8a(3)]. At the last day, males in MD group also spent more time to find the platform [ $p < 0.01$ , Fig. 8a(3)], although they had the same average speed [ $p < 0.001$ , Fig. 8b(3)]. Except for the 2nd day, females rats of the MD group had significantly higher speed than the ones from control group [ $p < 0.001$ , Fig. 8b(4)], they only had a longer latency escape interval on the last day [ $p < 0.01$ ,



**Fig. 4** CALB in the dentate gyrus of the hippocampus. **a** CALB expression in control female rats; **b** CALB expression in MD female rats

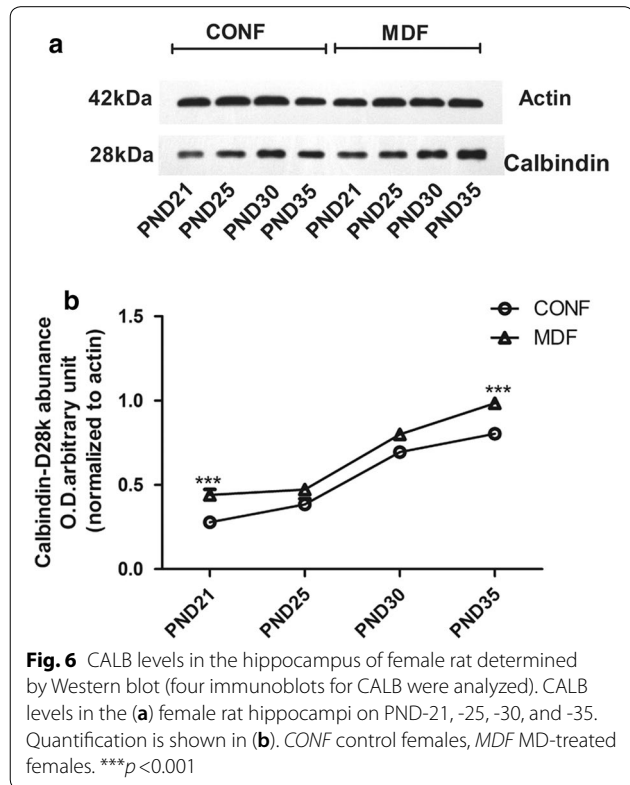
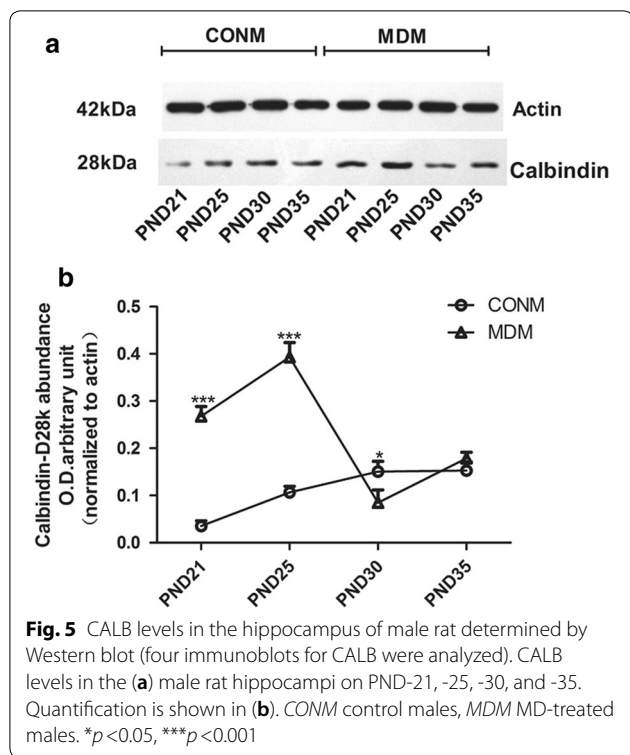
Fig. 8a(4)], but on the other days the females of the 2 groups spent similar time to find the platform [ $p > 0.05$ , Fig. 8a(4)].

**Effect of MD and/or MWM test on CALR and CALB levels on PND-40**

On PND-40, the hippocampal CALR levels of the females and males differed significantly ( $F_{(1,40)} = 4.53$ ,  $p < 0.05$ ; Fig. 9a, b). Male rats that were exposed to both MD and the MWM test had significantly lower CALR levels compared with the males that were exposed to MD alone ( $p < 0.05$ ) or the MWM test alone ( $p < 0.001$ ). Females that were exposed to MD alone

had significantly higher CALR levels compared with females of the control group ( $p < 0.05$ ). Females that were exposed to both MD and the MWM test had significantly higher CALR levels compared with females exposed to MD alone ( $p < 0.05$ ), or only the MWM test ( $p < 0.01$ ).

Similar to the CALR results, the CALB levels were also significantly different between the females and males ( $F_{(1,40)} = 10.74$ ,  $p < 0.01$ ; Fig. 7c, d). Males that were exposed to the MWM test alone had higher CALB levels than the males from the control group ( $p < 0.001$ ). Males exposed to the MWM test alone had higher CALB levels than the males exposed only to MD



( $p < 0.001$ ). Males exposed to only the MWM test had higher CALB levels than those that were exposed to both MD and the MWM test ( $p < 0.001$ ). Males exposed to both MD and the MWM test had lower CALB levels compared with the males of the control group ( $p < 0.001$ ) and also compared with males exposed only to MD ( $p < 0.001$ ).

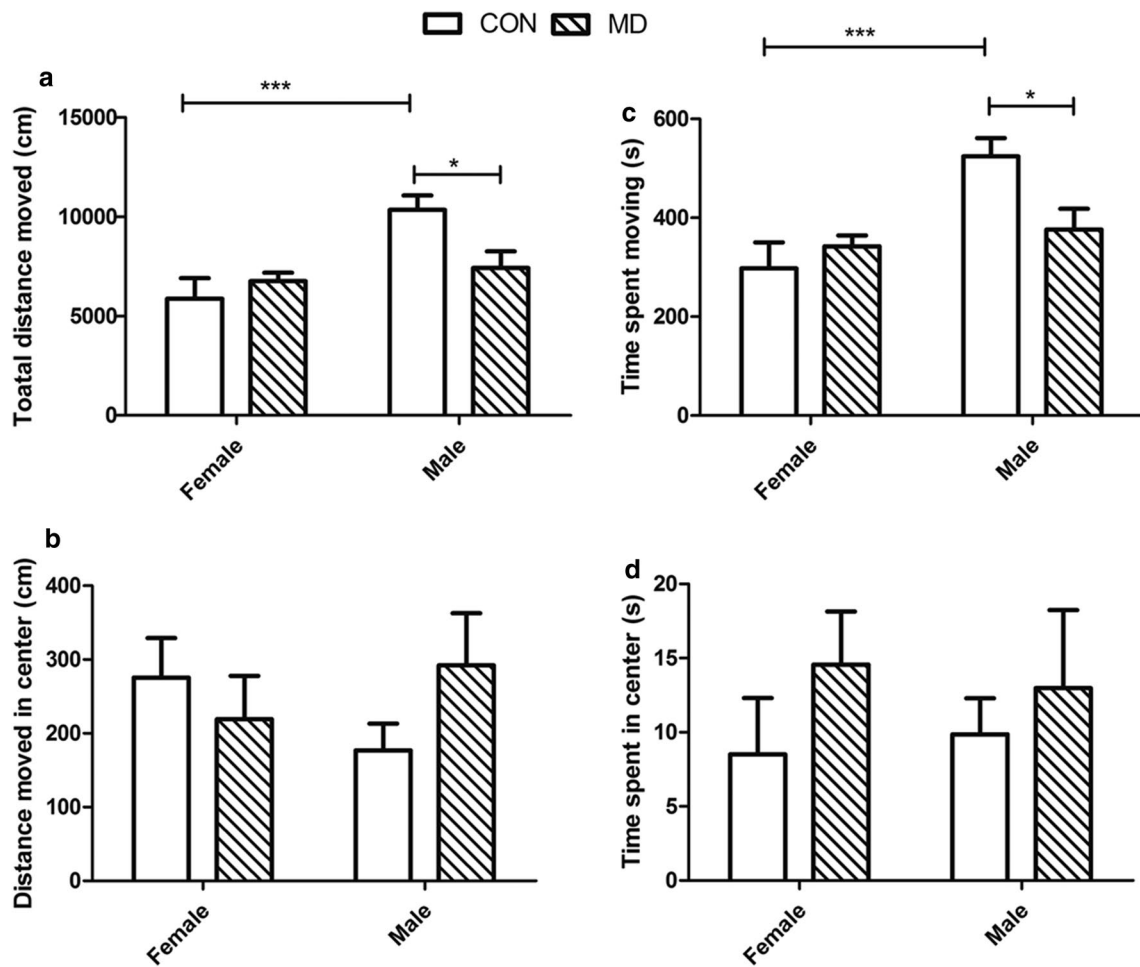
Female rats exposed only to the MWM test, exposed only to MD, or exposed to both MD and the MWM test, had significantly higher CALB levels than the females of the control group ( $p < 0.01$ ,  $< 0.01$ , and  $< 0.001$ , respectively).

### Discussion

In the present study, we investigated the effects of early-life adversity on hippocampal CALR and CALB protein levels and cognitive behaviors, and explored whether these effects were sex-related.

On PND-21, CALR and CALB levels were elevated in the MD group both in male and female rats, which was in accordance with our previous study [32]. On PND 35, CALR and CALB returned to the normal level in male rats exposed to MD, but female rats exposed to MD showed lower CALR level and slightly higher CALB level compared with controls.

In the open field test, we observed that male rats exposed to MD explored less, but female rats were not affected by MD exposure. Our previous study also showed that only male but not female rats exposed to MD spent less time in the open arm in the elevated plus maze test [32]. The decrease in exploration behavior and avoidance of stressful environment were indications of anxiety-like behaviors in rodents [37–40]. The anxiety-like behaviors were reported to be caused by elevated HPA reactivity [41, 42]. High glucocorticoid levels, on the other hand, induce neuronal activation and increased  $Ca^{2+}$  influx into neurons [43, 44]. Excessive intracellular  $Ca^{2+}$  was neurotoxic, and calcium-binding proteins, CALR and CALB, buffer excessive intracellular  $Ca^{2+}$  levels and therefore have an important role maintaining neuronal homeostasis and survival [43, 45, 46]. In our previous study, we observed that female rats had 4–5-fold higher CALB levels in the hippocampus compared with males [32], and possibly a stronger ability to buffer stress induced by excessive  $Ca^{2+}$  influx into neurons. This may explain why the female rats were more resistant to MD stress. Although the CALR and CALB levels were dramatically increased by 3–5-fold in male MD rats during PND-21 and PND-25, the levels probably could still



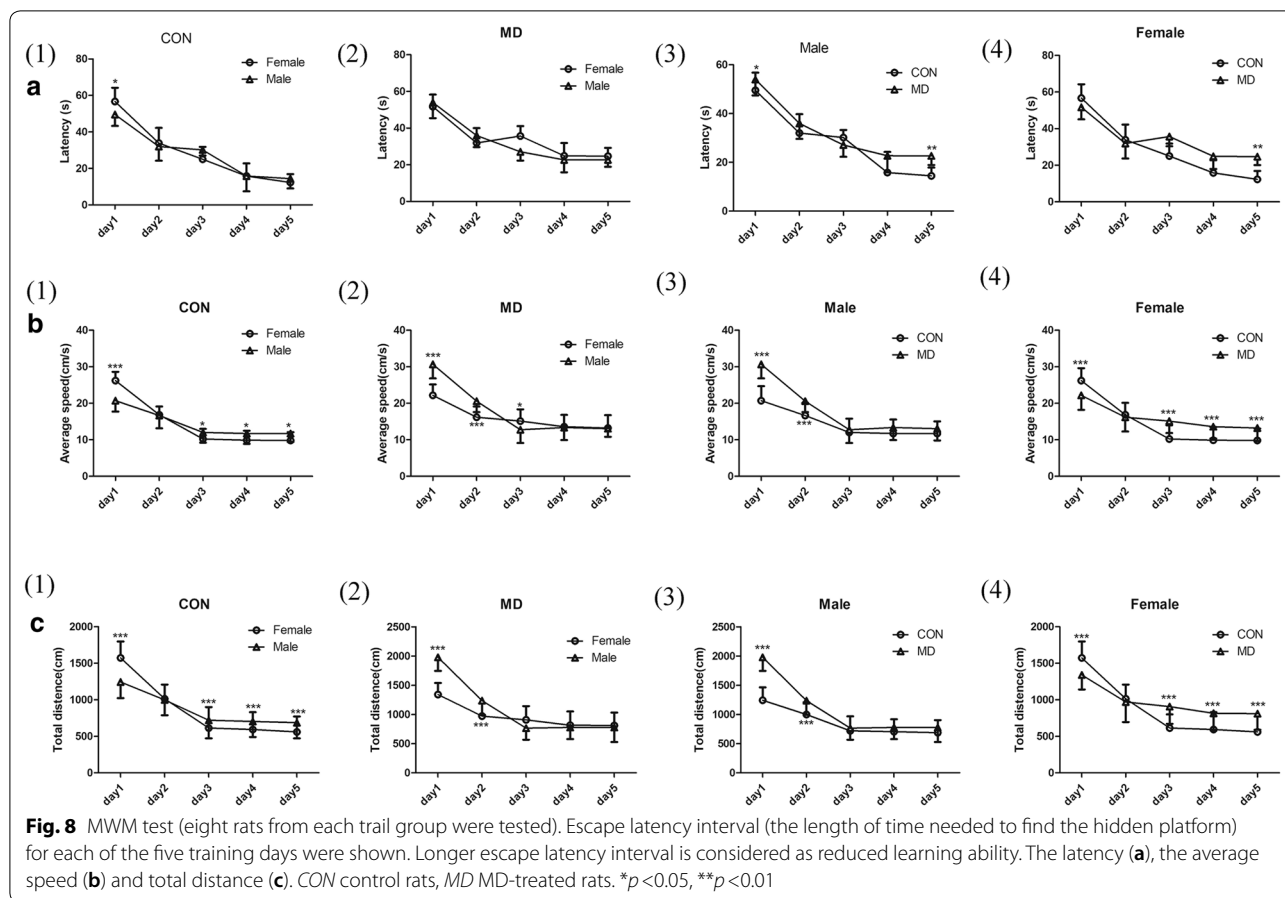
**Fig. 7** Open field test (six rats from each group were tested). In an open field arena, **a** total distance moved and **b** distance moved in center are considered as an index of reduced exploring behavior, **c** time spent moving and **d** time spent in center are considered as an index of anxiety. \* $p < 0.05$ , \*\* $p < 0.01$ , \*\*\* $p < 0.001$

not compensate for the excessive intracellular  $Ca^{2+}$  that is harmful to brain homeostasis.

Interestingly, both male and female rats exposed to MD showed impaired spatial memory on the last day of the Morris water maze test. We observed that both male and female rats that were not exposed to MD stress had elevated hippocampal levels of CALR and CALB after Morris water maze test, and this was possibly an indication of increased neuronal activity and brain plasticity after

spatial learning. However, in the MD group, both CALR and CALB levels were lower in male rats after MWM test, which might cause their impairment in spatial learning. Unlike male rats, higher CALR level and comparable CALB level were observed in female MD group compared with control group, indicating a different mechanism underlying the spatial learning impairment in female MD rats.

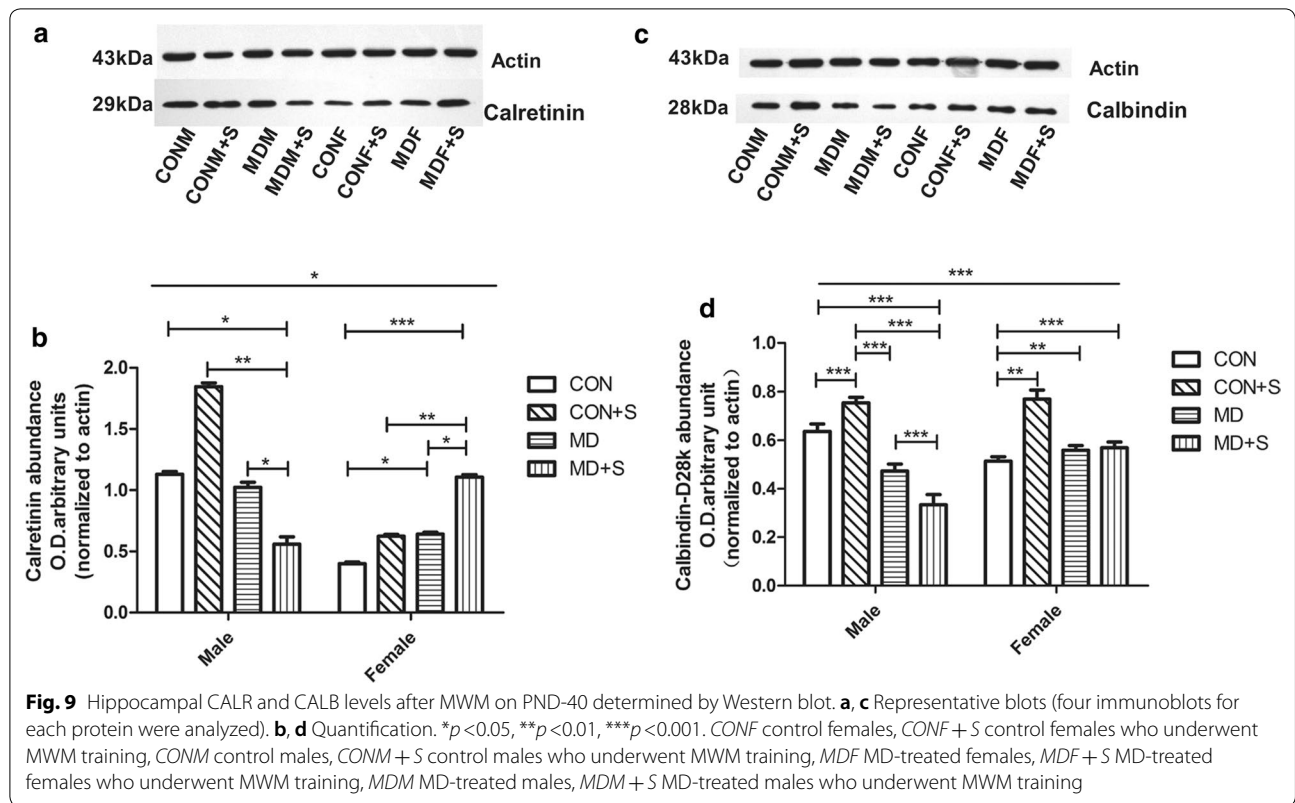




CALR was reported to have important role in neurogenesis and neuroprotection [47, 48] but did not affect the spatial learning in rodents [35, 36], while CALB was reported to affect both learning and neuroprotection [49–52]. In the present study, it was possible that the failure to increase the CALB level after spatial learning limited the brain plasticity and caused the impairment in learning in female MD rats. Although female rats developed a mechanism to counteract MD stress and did not show abnormal behaviors under non-stressful conditions, there may still be minor changes in their brain plasticity when exposed to MD stress. The cognition impairment caused by MD in female rats could probably only be visualized under challenged conditions, such as spatial learning and the stressful

environment caused by MWM test. We believe that sex hormones had an important role in regulating calcium binding protein responses differently in male and female rats, but the detailed mechanisms remain to be investigated.

In the current study, we demonstrated that male rats were more vulnerable to MD stress than female rats, and showed decreased explorative behavior and spatial learning impairment after MD exposure. Most importantly, we found that female rats, although resistant to MD stress to a certain level, demonstrated also spatial learning impairment after exposure to MD stress. The spatial learning impairment in female MD rats may be caused by limited brain plasticity, especially lack of involvement of CALB protein, during the MWM test. This study provides



evidence of a sex difference in neurodevelopmental disorders and suggests the involvement of calcium-binding proteins in developmental abnormalities caused by early-life adversity.

**Abbreviations**

MD: maternal deprivation; CALR: calretinin; CALB: calbindin-D28k; PND: postnatal day; MWM: Morris water maze; CNS: central nervous system; ADHD: attention-deficit/hyperactive disorder; ASD: autism spectrum disorder.

**Authors' contributions**

HX, YY, YH, FS, ZF and XH conceived and designed the experiments; HX, YY, YH, FS, GY and YY performed the experiments; YH and FS analyzed the data; HX, ZF and XH wrote the manuscript. All authors read and approved the final manuscript.

**Author details**

<sup>1</sup> Department of Neurosurgery, Xijing Hospital, Fourth Military Medical University, Xi'an, China. <sup>2</sup> Faculty of Space and Aviation, Fourth Military Medicine University, Xi'an, China. <sup>3</sup> Department of Neurosurgery, Second Affiliated Hospital of Hunan Normal University, Changsha, China.

**Acknowledgements**

We are indebted to the members of our laboratories in the Department of Neurosurgery, Xijing Hospital of the Fourth Military Medical University.

**Competing interests**

The authors declare that they have no competing interests.

**Availability of data and materials**

The datasets used and/or analyzed during the current study are available from the corresponding authors upon reasonable request.

**Consent for publication**

Not applicable.

**Ethics approval and consent to participate**

All experimental procedures were performed in accordance with the Guidelines for the Care and Use of Laboratory Animals of the European Communities Council Directive of 24 November 1986 (86/609/EEC) and were approved by the Ethics Committee of Fourth Military Medical University (Approval ID XJYYL-2015251).

**Funding**

The work was supported by the National Natural Science Foundation of China (Nos. 81601178), Major Program of National Natural Science Foundation of China (Nos. 81430043), Project of science and technology of social development in Shaanxi Province (2016SF-049), and Military Medical Science and technology youth training project (15QNP069).

**Publisher's Note**

Springer Nature remains neutral with regard to jurisdictional claims in published maps and institutional affiliations.

Received: 12 February 2018 Accepted: 28 April 2018

Published online: 15 May 2018

**References**

- Goldstein S, Reynolds CR. Handbook of neurodevelopmental and genetic disorders in children. New York: Guilford Press; 2011. p. 588.
- Little J. Epidemiology of neurodevelopmental disorders in children. Prostaglandins Leukot Essent Fatty Acids. 2000;63:11–20.
- Kiser DP, Rivero O, Lesch K-P. Annual research review: the (epi)genetics of neurodevelopmental disorders in the era of whole-genome

- sequencing—unveiling the dark matter. *J Child Psychol Psychiatry*. 2015;56:278–95.
4. Biederman J, Faraone SV. Attention-deficit hyperactivity disorder. *Lancet*. 2005;366:237–48.
  5. Newschaffer CJ, Falb MD, Gurney JG. National autism prevalence trends from United States special education data. *Pediatrics*. 2005;115:e277–82.
  6. Boyle CA, Boulet S, Schieve LA, Cohen RA, Blumberg SJ, Yeargin-Allsopp M, Visser S, Kogan MD. Trends in the prevalence of developmental disabilities in US children, 1997–2008. *Pediatrics*. 2011;127:1034–42.
  7. Rutter M. Incidence of autism spectrum disorders: changes over time and their meaning. *Acta Paediatr*. 2005;94:2–15.
  8. Damico JS, Tettowiski JA, Nettleton SK. Emerging issues and trends in attention deficit hyperactivity disorder: an update for the speech-language pathologist. *Semin Speech Lang*. 2004;25:207–13.
  9. Costello EJ, Foley DL, Angold A. 10-year research update review: the epidemiology of child and adolescent psychiatric disorders: II. Developmental epidemiology. *J Am Acad Child Adolesc Psychiatry*. 2006;45:8–25.
  10. Wing L, Potter D. The epidemiology of autistic spectrum disorders: is the prevalence rising? *Ment Retard Dev D R*. 2002;8:151–61.
  11. Bale TL, Baram TZ, Brown AS, Goldstein JM, Insel TR, McCarthy MM, Nemeroff CB, Reyes TM, Simerly RB, Susser ES, Nestler EJ. Early life programming and neurodevelopmental disorders. *Biol Psychiatry*. 2010;68:314–9.
  12. Pechtel P, Pizzagalli DA. Effects of early life stress on cognitive and affective function: an integrated review of human literature. *Psychopharmacology*. 2011;214:55–70.
  13. Lemaire V, Koehl M, Le Moal M, Abrous DN. Prenatal stress produces learning deficits associated with an inhibition of neurogenesis in the hippocampus. *Proc Natl Acad Sci USA*. 2000;97:11032–7.
  14. Oitzl MS, Workel JO, Flutterm M, Frosch F, De Kloet ER. Maternal deprivation affects behaviour from youth to senescence: amplification of individual differences in spatial learning and memory in senescent Brown Norway rats. *Eur J Neurosci*. 2000;12:3771–80.
  15. Carr CP, Martins CM, Stingel AM, Lemgruber VB, Juruena MF. The role of early life stress in adult psychiatric disorders: a systematic review according to childhood trauma subtypes. *J Nerv Ment Dis*. 2013;201:1007–20.
  16. Meaney MJ, Aitken DH, van Berkel C, Bhatnagar S, Sapolsky RM. Effect of neonatal handling on age-related impairments associated with the hippocampus. *Science*. 1988;239:766–8.
  17. Vallee M, MacCari S, Dellu F, Simon H, Le Moal M, Mayo W. Long-term effects of prenatal stress and postnatal handling on age-related glucocorticoid secretion and cognitive performance: a longitudinal study in the rat. *Eur J Neurosci*. 1999;11:2906–16.
  18. Levine S. Maternal and environmental influences on the adrenocortical response to stress in weanling rats. *Science*. 1967;156:258–60.
  19. Walker CD. Maternal touch and feed as critical regulators of behavioral and stress responses in the offspring. *Dev Psychobiol*. 2010;52:638–50.
  20. Francis DD, Meaney MJ. Maternal care and the development of stress responses. *Curr Opin Neurobiol*. 1999;9:128–34.
  21. Francis DD, Champagne FA, Liu D, Meaney MJ. Maternal care, gene expression, and the development of individual differences in stress reactivity. *Ann N Y Acad Sci*. 1999;896:66–84.
  22. Liu D, Diorio J, Tannenbaum B, Caldji C, Francis D, Freedman A, Sharma S, Pearson D, Plotsky PM, Meaney MJ. Maternal care, hippocampal glucocorticoid receptors, and hypothalamic–pituitary–adrenal responses to stress. *Science*. 1997;277:1659–62.
  23. Plotsky PM, Meaney MJ. Early, postnatal experience alters hypothalamic corticotropin-releasing factor (CRF) mRNA, median eminence CRF content and stress-induced release in adult rats. *Brain Res Mol Brain Res*. 1993;18:195–200.
  24. Ellenbroek BA, Derks N, Park HJ. Early maternal deprivation retards neurodevelopment in Wistar rats. *Stress*. 2005;8:247–57.
  25. Heim C, Nemeroff CB. The impact of early adverse experiences on brain systems involved in the pathophysiology of anxiety and affective disorders. *Biol Psychiatry*. 1999;46:1509–22.
  26. Heim C, Nemeroff CB. The role of childhood trauma in the neurobiology of mood and anxiety disorders: preclinical and clinical studies. *Biol Psychiatry*. 2001;49:1023–39.
  27. Ruedi-Bettschen D, Zhang W, Rüssig H, Ferger B, Weston A, Pedersen EM, Feldon J, Pryce CR. Early deprivation leads to altered behavioural, autonomic and endocrine responses to environmental challenge in adult Fischer rats. *Eur J Neurosci*. 2006;24:2879–93.
  28. Marco EM, Valero M, de la Serna O, Aisa B, Borcel E, Ramirez MJ, Viveros MP. Maternal deprivation effects on brain plasticity and recognition memory in adolescent male and female rats. *Neuropharmacology*. 2013;68:223–31.
  29. Oomen CA, Girardi CE, Cahyadi R, Verbeek EC, Krugers H, Joels M, Lucassen PJ. Opposite effects of early maternal deprivation on neurogenesis in male versus female rats. *PLoS ONE*. 2009;4:e3675.
  30. Osborne DM, Pearson-Leary J, McNay EC. The neuroenergetics of stress hormones in the hippocampus and implications for memory. *Front Neurosci*. 2015;9:164.
  31. Roceri M, Hendriks W, Racagni G, Ellenbroek BA, Riva MA. Early maternal deprivation reduces the expression of BDNF and NMDA receptor subunits in rat hippocampus. *Mol Psychiatry*. 2002;7:609–16.
  32. Xu H, Hu W, Zhang X, Gao W, Liang M, Chen T, He X, Hu Z. The effect of different maternal deprivation paradigms on the expression of hippocampal glucocorticoid receptors, calretinin and calbindin-D28k in male and female adolescent rats. *Neurochem Int*. 2011;59:847–52.
  33. Schwaller B, Meyer M, Schiffmann S. 'New' functions for 'old' proteins: the role of the calcium-binding proteins calbindin D-28k, calretinin and parvalbumin, in cerebellar physiology. Studies with knockout mice. *Cerebellum*. 2002;1:241–58.
  34. Muller A, Kukley M, Stausberg P, Beck H, Muller W, Dietrich D. Endogenous Ca<sup>2+</sup> buffer concentration and Ca<sup>2+</sup> microdomains in hippocampal neurons. *J Neurosci*. 2005;25:558–65.
  35. Schurmans S, Schiffmann SN, Gurden H, Lemaire M, Lipp HP, Schwam V, Pochet R, Imperato A, Bohme GA, Parmentier M. Impaired long-term potentiation induction in dentate gyrus of calretinin-deficient mice. *Proc Natl Acad Sci USA*. 1997;94:10415–20.
  36. Gurden H, Schiffmann SN, Lemaire M, Bohme GA, Parmentier M, Schurmans S. Calretinin expression as a critical component in the control of dentate gyrus long-term potentiation induction in mice. *Eur J Neurosci*. 1998;10:3029–33.
  37. Steimer T. Animal models of anxiety disorders in rats and mice: some conceptual issues. *Dialogues Clin Neurosci*. 2011;13:495–506.
  38. Prut L, Belzung C. The open field as a paradigm to measure the effects of drugs on anxiety-like behaviors: a review. *Eur J Pharmacol*. 2003;463:3–33.
  39. Moy SS, Nadler JJ, Young NB, Perez A, Holloway LP, Barbaro RP, Barbaro JR, Wilson LM, Threadgill DW, Lauder JM, Magnuson TR, Crawley JN. Mouse behavioral tasks relevant to autism: phenotypes of 10 inbred strains. *Behav Brain Res*. 2007;176:4–20.
  40. Silverman JL, Yang M, Lord C, Crawley JN. Behavioural phenotyping assays for mouse models of autism. *Nat Rev Neurosci*. 2010;11:490–502.
  41. Priebe K, Romeo RD, Francis DD, Sisti HM, Mueller A, McEwen BS, Brake WG. Maternal influences on adult stress and anxiety-like behavior in C57BL/6J and BALB/cJ mice: a cross-fostering study. *Dev Psychobiol*. 2005;47:398–407.
  42. Murgatroyd C, Quinn JP, Sharp HM, Pickles A, Hill J. Effects of prenatal and postnatal depression, and maternal stroking, at the glucocorticoid receptor gene. *Transl Psychiatry*. 2015;5:e560.
  43. Lephart ED, Watson MA. Maternal separation: hypothalamic–preoptic area and hippocampal calbindin-D28K and calretinin in male and female infantile rats. *Neurosci Lett*. 1999;267:41–4.
  44. Stein-Behrens BA, Lin WJ, Sapolsky RM. Physiological elevations of glucocorticoids potentiate glutamate accumulation in the hippocampus. *J Neurochem*. 1994;63:596–602.
  45. Baimbridge KG, Celio MR, Rogers JH. Calcium-binding proteins in the nervous system. *Trends Neurosci*. 1992;15:303–8.
  46. Yenari MA, Minami M, Sun GH, Meier TJ, Kunis DM, McLaughlin JR, Ho DY, Sapolsky RM, Steinberg GK. Calbindin d28k overexpression protects striatal neurons from transient focal cerebral ischemia. *Stroke*. 2001;32:1028–35.
  47. Todkar K, Scotti AL, Schwaller B. Absence of the calcium-binding protein calretinin, not of calbindin D-28k, causes a permanent impairment of murine adult hippocampal neurogenesis. *Front Mol Neurosci*. 2012;5:56.
  48. Brandt MD, Jessberger S, Steiner B, Kronenberg G, Reuter K, Bick-Sander A, von der Behrens W, Kempermann G. Transient calretinin expression defines early postmitotic step of neuronal differentiation in adult hippocampal neurogenesis of mice. *Mol Cell Neurosci*. 2003;24:603–13.

49. Odero GL, Oikawa K, Glazner KA, Schapansky J, Grossman D, Thiessen JD, Motnenko A, Ge N, Martin M, Glazner GW, Albenzi BC. Evidence for the involvement of calbindin D28k in the presenilin 1 model of Alzheimer's disease. *Neuroscience*. 2010;169:532–43.
50. Soontornniyomkij V, Risbrough VB, Young JW, Soontornniyomkij B, Jeste DV, Achim CL. Hippocampal calbindin-1 immunoreactivity correlate of recognition memory performance in aged mice. *Neurosci Lett*. 2012;516:161–5.
51. Molinari S, Battini R, Ferrari S, Pozzi L, Killcross AS, Robbins TW, Jouvenceau A, Billard JM, Dutar P, Lamour Y, Baker WA, Cox H, Emson PC. Deficits in memory and hippocampal long-term potentiation in mice with reduced calbindin D28K expression. *Proc Natl Acad Sci USA*. 1996;93:8028–33.
52. Nowak B, Zadrozna M, Ossowska G, Sowa-Kucma M, Gruca P, Papp M, Dybala M, Pilc A, Nowak G. Alterations in hippocampal calcium-binding neurons induced by stress models of depression: a preliminary assessment. *Pharmacol Rep*. 2010;62:1204–10.

**Ready to submit your research? Choose BMC and benefit from:**

- fast, convenient online submission
- thorough peer review by experienced researchers in your field
- rapid publication on acceptance
- support for research data, including large and complex data types
- gold Open Access which fosters wider collaboration and increased citations
- maximum visibility for your research: over 100M website views per year

**At BMC, research is always in progress.**

Learn more [biomedcentral.com/submissions](https://biomedcentral.com/submissions)

