

# Reintroduction of the endangered and endemic plant species *Cochlearia bavarica*—Implications from conservation genetics

Franziska Kaulfuß | Christoph Reisch 

Chair of Ecology and Conservation Biology, University of Regensburg, Regensburg, Germany

## Correspondence

Christoph Reisch, Institute of Ecology and Conservation Biology, University of Regensburg, Regensburg, Germany.  
Email: christoph.reisch@biologie.uni-regensburg.de

## Funding information

The study was financially funded by the Bavarian Agency for Nature Conservation (grant/award number: Z2-0734-12650/2014)

## Abstract

Population reintroduction is a common practice in conservation, but often fails, also due to the effects of inbreeding or outbreeding depression. *Cochlearia bavarica* is a strongly endangered plant species endemic to Bavaria in Germany, constantly declining since the late 1980s. Therefore, population reintroduction is intended. In this study, we analyzed genetic diversity within and genetic differentiation between all 32 remnant populations of the species in Swabia and Upper Bavaria using amplified fragment length polymorphisms. Our aim was to increase reintroduction success by providing data to avoid negative effects of inbreeding and outbreeding and to preserve the natural genetic pattern of the species. Genetic diversity within populations was low but similar to other rare and endemic species and varied strongly between populations but did not depend on population size. Our analysis revealed a strong geographic pattern of genetic variation. Genetic differentiation was strongest between Swabia and Upper Bavaria and at the population level, whereas differentiation between subpopulations was comparatively low. Isolation by distance and genetic differentiation was stronger among populations from Upper Bavaria than from Swabia. From the results of our study, we derived recommendations for a successful reintroduction of the species. We suggest using rather genetically variable than large populations as reintroduction sources. Moreover, the exchange of plant material between Swabia and Upper Bavaria should be completely avoided. Within these regions, plant material from genetically similar populations should preferably be used for reintroduction, whereas the exchange among subpopulations seems to be possible without a negative impact on genetic variation due to natural gene flow.

## KEYWORDS

conservation, genetic variation, inbreeding, outbreeding, reinforcement, reintroduction

## 1 | INTRODUCTION

The loss of plant species is a worldwide problem, mainly due to land use changes (Maurer, Weyand, Fischer, & Stöcklin, 2006; Poschlod, Bakker, & Kahmen, 2005) such as agricultural intensification (Storkey, Meyer, Still, & Leuschner, 2012) and abandonment

of traditional management methods (Poschlod & WallisDeVries, 2002). The associated process of habitat fragmentation intensifies the loss of plant species (Fahrig, 2003; Schleunig, Niggemann, Becker, & Matthies, 2009), because small and isolated remnant populations suffer from a higher extinction probability (Matthies, Brauer, Maibom, & Tschardtke, 2004). The actual extinction rate is,

This is an open access article under the terms of the Creative Commons Attribution License, which permits use, distribution and reproduction in any medium, provided the original work is properly cited.

© 2017 The Authors. *Ecology and Evolution* published by John Wiley & Sons Ltd.

therefore, 100–1,000 times higher than it would be naturally expected (Thuiller, 2007).

Population reintroduction, comprising reintroduction in the narrow sense, reinforcement, and translocation (Akeroyd & Wyse, 1995), is meanwhile a common practice in conservation to alleviate the proceeding loss of plant species. Generally, the aim of population reintroduction is to establish genetically variable populations, to increase gene flow (Akeroyd & Wyse, 1995; Betz, Scheuerer, & Reisch, 2013; Godefroid et al., 2011) and to minimize the probability of population extinction (Vergeer, van den Berg, Roelofs, & Ouborg, 2005).

However, population reintroduction is a challenge and often fails (Godefroid et al., 2011). One main reason for the lack of success is the origin of the plant material used for reintroduction, especially when reintroduced plants or seeds derive from small populations or only from a few individuals (Godefroid et al., 2011). Small populations are less attractive for pollinators (Agren, 1996; Aizen & Feinsinger, 1994; Kunin, 1997), which reduces cross-pollination and increases self-fertilization or mating with related individuals (Van Treuren, Bijlsma, Ouborg, & Kwak, 1994). Using plant material from small populations with limited genetic variation may increase indeed the census population size but even reduce effective population size (Friar, Ladoux, Roalson, & Robichaux, 2000; Robichaux, Friar, & Mount, 1997). Reintroduced populations may, therefore, suffer from inbreeding depression (Frankham, Ballou, & Briscoe, 2002; Friar et al., 2000; Robichaux et al., 1997).

Similar results can be evoked when reintroduced populations are founded with only a few individuals. Genetic variation of the reintroduced population may be reduced due to this founder effect (Vergeer et al., 2005). Furthermore, genetic drift may cause the random loss of alleles, increasing homozygosity and the fixation of deleterious alleles (Ellstrand & Elam, 1993; Young, Boyle, & Brown, 1996). Both, inbreeding and genetic drift, result in decreased genetic diversity and fitness (Booy, Hendriks, Smulders, Van Groenendael, & Vosman, 2000; Charlesworth & Charlesworth, 1987; Ouborg, Vergeer, & Mix, 2006; Young, Petersen, & Clary, 2005), and populations may thus lose their ability to adapt to changing environmental conditions (Booy et al., 2000; Heywood, 1991; Reed, Lowe, Briscoe, & Frankham, 2003).

Moreover, the success of population reintroduction may be limited due to the adaptation of populations to the environmental conditions of their habitat. It has been demonstrated previously that ecological differences among habitats result in different local adaptations or ecotype development (Becker, Colling, Dostal, Jakobsson, & Matthies, 2006; Joshi et al., 2001; Leimu & Fischer, 2008; McKay, Christian, Harrison, & Rice, 2005; Reisch & Poschlod, 2009). Mixing different genotypes adapted to specific habitat conditions can result in the erosion of coadapted gene complexes (Frankham et al., 2002). Local adaptations get lost, and outbreeding depression may result in decreased fitness and performance of the populations (Bischoff et al., 2006; Fischer & Matthies, 1998; Keller, Kollmann, & Edwards, 2000; Krauss, Zawko, Bussell, Taylor, & Hood, 2005; Mijnsbrugge, Bischoff, & Smith, 2010; Montalvo & Ellstrand, 2000, 2001), which may consequently decrease reintroduction success.

*Cochlearia bavarica* Vogt is a rare, endemic, and endangered plant species comprising a limited number of small and isolated

populations (Fischer, Hock, & Paschke, 2003). The species occurs in only two regions of Bavaria, and the number and size of populations constantly declined since the late 1980s due to changes in land use, habitat loss, and fragmentation (Fischer et al., 2003). *Cochlearia bavarica* has, therefore, been included in the “German National Strategy on Biodiversity” and in two large conservation projects (“Wildpflanzenschutz Deutschland” and “Löffelkraut & Co”). Within these projects, it is intended to maintain and develop populations by protecting and restoring natural habitats of *C. bavarica*. Furthermore, it is purposed to augment small populations by population reinforcement and to reduce the loss of populations by population reintroduction.

The genus *Cochlearia* and its species already have been in the focus of many plant systematic and conservation studies (Brandrud, 2014; Cires, Samain, Goetghebeur, & Prieto, 2011; Koch, Dobeš, Bernhardt, & Kochjarová, 2003; Olsen, 2015; Paschke, Abs, & Schmid, 2002a). In this study, we analyzed the genetic diversity and differentiation among populations of *C. bavarica*. Our aim was to increase the success of future population reintroduction and reinforcement, by providing data to avoid negative effects of inbreeding and outbreeding and to preserve the natural genetic pattern of the species. In this context, the following questions were addressed: (1) How large is genetic diversity within populations and genetic differentiation among populations of *C. bavarica*? (2) Which populations may serve as potential sources for population reinforcement of small populations facing extinction or population reintroduction? (3) Is it possible to draw general conclusions for the reintroduction of *C. bavarica*?

## 2 | METHODS

### 2.1 | Species description

*Cochlearia bavarica* Vogt is endemic to Bavaria with a narrow distribution in Swabia and Upper Bavaria (Abs, 1999). The species is more frequent in Swabia than in Upper Bavaria and originated from hybridization of *Cochlearia pyrenaica* DC. and *Cochlearia officinalis* L. (Koch, Hurka, & Mummenhoff, 1996) and is a habitat specialist of calcareous springs with continuous water supply, small rivers, or drainage ditches and occurs in open calcareous fens, woodland clearings, and shaded woodland springs (Abs, 1999). The species is considered as highly endangered and is legally protected by law (Fischer et al., 2003).

*Cochlearia bavarica* is a perennial, monocarpic herbaceous plant species (Paschke, Bernasconi, & Schmid, 2003) with a sporophytic self-incompatibility system (Fischer et al., 2003). Plants flower from May to June, and the ellipsoid fruits are 5–8 mm long and contain two to six brown or reddish-brown seeds (Vogt, 1985). The species is pollinated by flies, bumblebees, other bees, or small moths (Paschke, Abs, & Schmid, 2002b; Paschke et al., 2003). Vegetative reproduction plays no major role because daughter rosettes are only found in the immediate vicinity of parent plants (Paschke et al., 2002b).

## 2.2 | Study design and sampled populations

In this study, we analyzed all 32 actually existing populations of *C. bavarica* (Table 1). Twenty-four populations are located in Swabia, and eight populations in Upper Bavaria (Figure 1). Within the two regions, populations of *C. bavarica* are strongly isolated. However, single populations often consist of several subpopulations with a distance of less than 200 m in between. Genetic variation was therefore exemplarily analyzed within and among each three subpopulations in one population from Swabia and one population from Upper Bavaria. For molecular analysis, rosette leaves were collected in situ from fifteen individuals per population or subpopulation. In total, fresh leaf material of 517 individuals was sampled and dried in teabags over silica gel. Population size was obtained from the monitoring regularly conducted in the conservation projects and ranged from 6 up to 102,500 individuals (Table 1).

## 2.3 | Molecular analyses

Genetic variation was assessed using genome-wide genotyping with AFLPs, amplified fragment length polymorphisms (Vos et al., 1995). DNA was isolated from silica gel dried plant material applying the cetyltrimethylammonium bromide method by Rogers and Bendich (1994) in an adaption by Reisch (2007). Concentration of genomic DNA was measured with a spectrophotometer, and every sample was diluted with water to a concentration of 7.8 ng/μl. The AFLP procedure was conducted in accordance with the protocol from Beckman Coulter as described before (Bylebyl, Poschlod, & Reisch, 2008; Reisch, 2008).

Double-strand DNA adapters were produced by adding equal volumes of both single strands of *EcoRI* and *MseI* adaptors (Biomers) in a 0.2-ml reaction vessel, heating for 5 min at 95°C with a final 10-min step at 25°C.

Digestion of 6.4 μl of genomic DNA (7.8 ng/μl) and ligation of DNA adaptors were performed by adding 3.6 μl of a core mix consisting of 2.5 U *EcoRI* (Thermo Scientific), 2.5 U *MseI* (Thermo Scientific), 0.1 μmol/L *EcoRI* and 1 μmol/L *MseI* adapter pair, 0.5 U T4 DNA ligase with its corresponding buffer (Thermo Scientific), 0.05 mol/L NaCl and 0.5 μg BSA (BioLabs/NBA), and a following incubation for 2 hr at 37°C and a subsequent enzyme denaturation step at 70°C for 15 min. The products were diluted 10-fold with 1:10 TE buffer (20 mmol/L Tris-HCl, pH 8.0; 0.1 mmol/L EDTA, pH 8.0).

In the preselective amplification, a reaction volume of 5 μl containing the diluted DNA restriction–ligation product, preselective *EcoRI* and *MseI* primers (Biomers) with a single selective nucleotide (*MseI*-C and *EcoRI*-A) and an AFLP core mix consisting of 1× Buffer S, 0.2 mmol/L dNTPs, and 1.25 U Taq-Polymerase (PeqLab) were amplified under the chosen parameters: 2 min at 94°C; 30 cycles of 20 s denaturation at 94°C followed by 30 s annealing at 56°C and 2 min elongation at 72°C; finally 2 min at 72°C ended the elongation period; 30 min at 60°C and a cool down to 4°C completed the PCR run. After this, the products were diluted 20-fold with 1:10 TE buffer for DNA.

For selective amplification, primers with three selective nucleotides were used. *EcoRI* primers were labeled with three different

fluorescent dyes for fragment detection (Beckman dye D2, D3, and D4). After an extensive primer screening with eight randomly selected individuals, six primer combinations were chosen for further analysis: *MseI*-CTC/*EcoRI*-AGC and *MseI*-CAC/*EcoRI*-AAC (D2), *MseI*-CAA/*EcoRI*-AAG and *MseI*-CAG/*EcoRI*-AAG (D3), *MseI*-CTG/*EcoRI*-ACT and *MseI*-CTA/*EcoRI*-ACA (D4).

Selective amplifications were performed in a reaction volume of 5 μl containing an AFLP core mix (1× Buffer S, 0.2 mmol/L dNTPs), 1.25 U Taq-Polymerase (PeqLab), 0.05 μmol/L selective *EcoRI* (Biomers), 0.25 μmol/L *MseI* (Biomers) primers, and 0.75 μl diluted preselective amplification product. The PCR run started with 2 min at 94°C; then 10 cycles of 20 s denaturation at 94°C, 30 s annealing at 66°C (temperature was reduced every subsequent step by 1°C), and 2 min elongation at 72°C; then additional 25 cycles of 20 s denaturation at 94°C, 30 s annealing at 56°C, and 2 min elongation at 72°C, completed by a following 30 min step at 60°C and a cool down to 4°C.

Selective PCR products were diluted with 5 μl (D2) and with 20 μl (D4) 1×TE buffer for DNA.

Then, 5 μl amplified selective PCR product (of each D2, D3, and D4) was added to a stop solution, consisting of 2 μl sodium acetate (3 mol/L, pH 5.2), 2 μl Na<sub>2</sub>EDTA (100 mmol/L, pH 8), and 1 μl glycogen (Roche). Participation of DNA took place by adding 60 μl of ice-cold ethanol (96%; –20°C), an immediate shaking and subsequent centrifugation for 20 min at 14,000 g at 4°C. The pelleted DNA was washed once by adding 200 μl of ice-cold ethanol (70%; –20°C) and again centrifugation for 20 min at 14,000 g at 4°C. Afterward, the pelleted DNA was vacuum dried in a vacuum concentrator (Eppendorf) and dissolved in a mixture of 24.8 μl sample loading solution (Beckman Coulter) and 0.2 μl DNA Size Standard 400 (Beckman Coulter).

According to fragment size, the fluorescence-labeled selective PCR products were separated by capillary gel electrophoresis on an automated sequencer (GenomeLab GeXP, Beckmann Coulter), and results were examined with DNA Size Standard 400 using the GeXP software (Beckman Coulter). For further investigations, results were exported as synthetic gel files (.crv), and the fragment pattern of every single individual was analyzed using the software Bionumerics 4.6 (Applied Maths, Kortrijk, Belgium): Each strong and clearly defined fragment was taken into account as either present or absent.

Samples with no clear banding pattern were repeated. Only three samples of *C. bavarica* had to be excluded from the analyses, due to amplification problems.

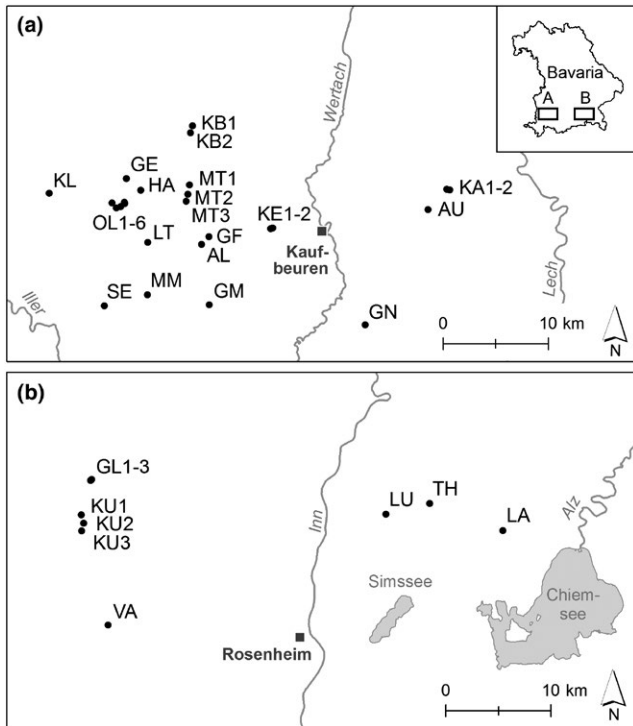
For quality control of the AFLP procedure, 10% of all analyzed samples were replicated twice and a genotyping error rate was calculated, according to Bonin et al. (2004), which was 3.2%.

## 2.4 | Statistical analysis

Employing the software Bionumerics 4.6, a binary (0/1) matrix was created for statistical analyses. If present, fragments of a given length were detected as 1 and in the case of absence as 0. Using the matrix, genetic diversity within each population and subpopulation was calculated as the percentage of polymorphic bands (PB),

**TABLE 1** Number, geographic location, and names of the analyzed populations in Swabia and Upper Bavaria. Subpopulations are displayed indented. Also specified are population label, number of analyzed individuals (*n*), and the population size (PS). Furthermore, genetic variation measures as Nei's gene diversity (GD), Shannon's information index (SI), and percentage of polymorphic bands (PB). Standard errors are given for mean values

| No. | Region                                | Population (subpopulation) | Label | <i>n</i> | PS     | GD     | SI      | PB      |         |
|-----|---------------------------------------|----------------------------|-------|----------|--------|--------|---------|---------|---------|
| 1   | Swabia                                | Klessen                    | KL    | 15       | 600    | 0.1198 | 0.1769  | 32.83   |         |
| 2   | Swabia                                | Ollarzried-Daßberg         | OL1   | 15       | 300    | 0.1255 | 0.1842  | 32.32   |         |
| 3   | Swabia                                | Ollarzried-Boschach        | OL2   | 15       | 1,500  | 0.1280 | 0.1879  | 33.84   |         |
| 4   | Swabia                                | Ollarzried-Mitte           | OL3   | 15       | 50     | 0.1239 | 0.1824  | 32.32   |         |
|     | Swabia                                | Ollarzried-Höhe            | OL    | 15       | 4,300  | 0.1275 | 0.1883  | 33.84   |         |
| 5   | Swabia                                | -Höhe 1                    | OL4   | 15       | 1,800  | 0.0968 | 0.1423  | 25.25   |         |
| 6   | Swabia                                | -Höhe 2                    | OL5   | 15       | 2,000  | 0.1219 | 0.1795  | 31.82   |         |
| 7   | Swabia                                | -Höhe 3                    | OL6   | 15       | 500    | 0.1213 | 0.1774  | 31.31   |         |
| 8   | Swabia                                | Seebach                    | SE    | 6        | 6      | 0.0996 | 0.1421  | 22.73   |         |
| 9   | Swabia                                | Grub-Eheim                 | GE    | 15       | 7,500  | 0.0971 | 0.1416  | 24.75   |         |
| 10  | Swabia                                | Hatzleberg                 | HA    | 15       | 200    | 0.1139 | 0.1676  | 30.81   |         |
| 11  | Swabia                                | Liebenthann                | LT    | 15       | 500    | 0.1022 | 0.1521  | 28.28   |         |
| 12  | Swabia                                | Immenthal                  | MM    | 9        | 15     | 0.1015 | 0.1490  | 26.77   |         |
| 13  | Swabia                                | Katzbrui-Mariengrotte      | KB1   | 15       | 95,000 | 0.1199 | 0.1759  | 31.31   |         |
| 14  | Swabia                                | Katzbrui-Mühle             | KB2   | 15       | 7,500  | 0.0704 | 0.1053  | 20.71   |         |
| 15  | Swabia                                | Mindeltal-Schönlings       | MT1   | 15       | 6,000  | 0.1141 | 0.1660  | 29.29   |         |
| 16  | Swabia                                | Mindeltal-Reichartsried    | MT2   | 15       | 1,500  | 0.1087 | 0.1589  | 27.78   |         |
| 17  | Swabia                                | Mindeltal-Mayers           | MT3   | 15       | 5,500  | 0.1115 | 0.1656  | 30.30   |         |
| 18  | Swabia                                | Algers                     | AL    | 15       | 7,000  | 0.0950 | 0.1410  | 26.77   |         |
| 19  | Swabia                                | Gfäll                      | GF    | 15       | 100    | 0.1108 | 0.1616  | 28.28   |         |
| 20  | Swabia                                | Gillenmoos                 | GM    | 14       | 3,000  | 0.1140 | 0.1655  | 28.79   |         |
| 21  | Swabia                                | Kemnath 1                  | KE1   | 15       | 8,500  | 0.1004 | 0.1465  | 25.76   |         |
| 22  | Swabia                                | Kemnath 2                  | KE2   | 15       | –      | 0.0931 | 0.1375  | 25.25   |         |
| 23  | Swabia                                | Gennachquelle              | GN    | 14       | 15     | 0.1261 | 0.1856  | 32.83   |         |
| 24  | Swabia                                | Aufkirch                   | AU    | 6        | 7      | 0.0860 | 0.1243  | 20.71   |         |
| 25  | Swabia                                | Kaltental 1                | KA1   | 15       | –      | 0.1074 | 0.1567  | 27.27   |         |
| 26  | Swabia                                | Kaltental 2                | KA2   | 15       | 15,000 | 0.0822 | 0.1212  | 22.73   |         |
|     | Mean all populations of Swabia        |                            |       |          |        |        | 0.1074  | 0.1577  | 28.18   |
|     | Standard error                        |                            |       |          |        |        | ±0.0031 | ±0.0046 | ±0.81   |
|     | Upper Bavaria                         | Glonnquellen               | GL    | 15       | 2,100  | 0.1057 | 0.1572  | 29.8    |         |
| 27  | Upper Bavaria                         | -Glonn 1                   | GL1   | 15       | 500    | 0.1101 | 0.1625  | 29.29   |         |
| 28  | Upper Bavaria                         | -Glonn 2                   | GL2   | 15       | 1,400  | 0.0934 | 0.139   | 26.26   |         |
| 29  | Upper Bavaria                         | -Glonn 3                   | GL3   | 15       | 200    | 0.0942 | 0.1397  | 26.26   |         |
| 30  | Upper Bavaria                         | Kupferbachtal 1            | KU1   | 15       | 500    | 0.0992 | 0.1456  | 26.26   |         |
| 31  | Upper Bavaria                         | Kupferbachtal 2            | KU2   | 15       | 1,000  | 0.0969 | 0.1423  | 26.77   |         |
| 32  | Upper Bavaria                         | Kupferbachtal 3            | KU3   | 15       | 8,000  | 0.1149 | 0.1691  | 30.81   |         |
| 33  | Upper Bavaria                         | Vagen                      | VA    | 15       | 600    | 0.1038 | 0.1541  | 28.79   |         |
| 34  | Upper Bavaria                         | Lungham                    | LU    | 15       | 2,000  | 0.1182 | 0.174   | 31.31   |         |
| 35  | Upper Bavaria                         | Thalham                    | TH    | 15       | 1,000  | 0.1093 | 0.161   | 30.81   |         |
| 36  | Upper Bavaria                         | Laubensee                  | LA    | 15       | 50     | 0.0746 | 0.1133  | 23.23   |         |
|     | Mean all populations of Upper Bavaria |                            |       |          |        |        | 0.1028  | 0.1521  | 28.47   |
|     | Standard error                        |                            |       |          |        |        | ±0.0048 | ±0.0067 | ±1.0011 |



**FIGURE 1** Geographic position of the analyzed populations of *Cochlearia bavarica* in Swabia (a) and Upper Bavaria (b)

as Shannon's information index  $SI = \sum(p_i)\ln(p_i)$  and Nei's gene diversity (GD)  $H = 1 - \sum(p_i)^2$ , where  $p_i$  represents the allele frequency, by using the software PopGene 32 (Yeh, Yang, Boyle, Ye, & Mao, 1997). A Mann-Whitney  $U$  test was used to test for significant differences in genetic diversity between regions applying the software IBM Statistics 22 for Windows (IBM Corp). Spearman's rank correlation coefficient was calculated to test the impact of population size on genetic diversity.

Hierarchical analyses of molecular variance, AMOVA (Excoffier, Smouse, & Quattro, 1992), were conducted with the software GenAlEx 6.41 (Peakall & Smouse, 2006). Thus, genetic differentiation within and among subpopulations, populations, and between regions was investigated in two- and three-level AMOVAs.

Correlation between genetic distances ( $\Phi_{PT}$  values calculated in the AMOVA) and geographic distances among populations was tested in a Mantel test with 999 permutations (Mantel, 1967).

Genetic distances among populations were calculated as Nei's distance ( $D_s$ ) following Lynch and Milligan (1994) with nonuniform prior distribution of allele frequencies in the program AFLPsurv (Vekemans, 2002). Based on these  $D_s$  distances, a consensus Neighbor-Net graph was calculated applying the software SplitsTree 4.14.4 (Huson & Bryant, 2006). Additionally, distance matrices generated by bootstrapping (1,000 bootstrap replicates were performed) were written in AFLPsurv, too. The files were used as input for the NEIGHBOR and CONSENSE procedures from the PHYLIP software package version 3.695 (Felsenstein, 1993) to obtain bootstrap support values. Bootstrap values higher than 70% were plotted in the Neighbor-Net graph.

Genetic relatedness of individuals was analyzed in the software MVSP version 3.12f (Kovach, 2007) using principal coordinate analyses (PCoA) based on interindividual Bray-Curtis similarities.

Moreover, a Bayesian cluster analysis was calculated with the program Structure version 2.3.4 (Pritchard, Stephens, & Donnelly, 2000; Pritchard, Wen, & Falush, 2007) to infer population structure in the data set and assign individuals into groups. It is assumed that the data set consists of an unknown number of  $K$  groups. Every single group is characterized by a set of allele frequencies at each locus, and samples from the data set are assigned randomly to groups. The number of groups was calculated using 10,000 Markov Chain Monte Carlo simulations with a burn-in period of 100,000 iterations. Analyses for the predefined value of  $K$  were run 20 times per  $K = 1-40$  (Falush, Stephens, & Pritchard, 2003, 2007). The program Structure Harvester (Earl & Vonholdt, 2012) was used to summarize results. Group assignment was an ad hoc quantity procedure calculating  $\Delta K$  (Evanno, Regnaut, & Goudet, 2005). The best estimate of  $K$  for the data set was defined according to the model which gave the consistent results for multiple runs and the highest probability of the data.

### 3 | RESULTS

#### 3.1 | AFLP banding and genetic diversity

Amplified fragment length polymorphisms analysis resulted in 198 fragments. No identical genotypes were detected. Furthermore, there were four bands private to the populations from Swabia and eleven bands were found only in populations from Upper Bavaria; 75.76% of the fragments were polymorphic.

In populations from Swabia, Nei's GD ranged from 0.07 to 0.13 (mean 0.11), Shannon's information index (SI) from 0.11 to 0.19 (mean 0.16), and the percentage of PB from 20.71 to 33.34 (mean 28.18). The highest level of diversity was found in population Ollarzried-Boschach and the lowest in population Katzbrui-Mühle (Table 1).

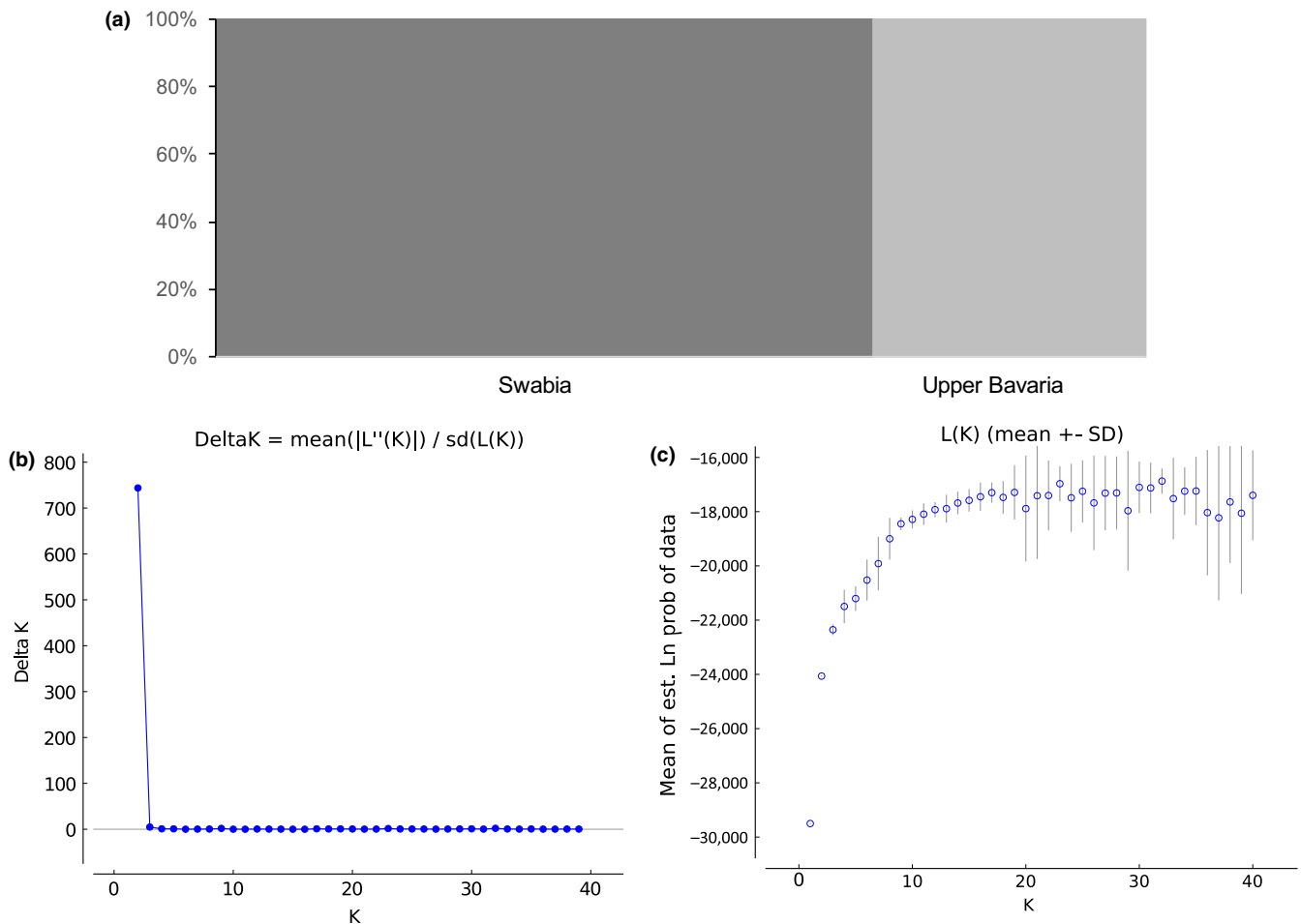
Similar results were found in populations from Upper Bavaria (Table 1). GD ranged from 0.08 to 0.12 (mean 0.10) and SI from 0.11 to 0.17 (mean 0.15). The percentage of polymorphic bands varied between 23.23 and 31.31 (mean 28.47). The highest level of diversity was found in population Lungham and the lowest in population Laubensee.

Populations from Swabia and Upper Bavaria did not differ significantly in genetic diversity, and the estimated population size was not correlated with genetic diversity (Spearman's rank correlation coefficient:  $r_{GD} = -.22$ ,  $p_{GD} = .91$ ).

#### 3.2 | Genetic differentiation

In the Bayesian cluster analysis, individuals were assigned to two groups ( $\Delta K = 743.8$ ) reflecting the regions Swabia and Upper Bavaria. For  $K = 2$ , outputs of all 20 iterations were identical (Figure 2a-c).

In the Neighbor-Net analysis, the studied populations were also assigned to these regions (Figure 3). Within Swabia, populations formed three groups: one comprised populations from the locations



**FIGURE 2** Results of the Bayesian cluster analysis. Populations were assigned to two groups according to the geographic regions Swabia and Upper Bavaria (a). Results of 20 runs for 1–40 possible groups to infer population structure with Bayesian clustering in STRUCTURE are shown in graph (b). Delta K is shown for each of the tested groups  $K = 1$ –40. Graph (c) shows  $\text{LnP}(D)$  variance for each of the tested groups

Hatzleberg (HA), Immenthal (MM), Grub-Eheim (GE), Katzbrui (KB), Klessen (KL), and Ollarzried (OL); the second consisted of populations from Liebenthann (LT), Algern (AL), and Gfäll (GF). Populations from the locations Gennachquelle (GN), Gillenmoos (GM), Kemnath (KE), Kaltenthal (KA), Aufkirch (AU), Seebach (SE), and Mindetal (MT) formed the third group. In Upper Bavaria, the populations Lungham (LU), Thalham (TH), and Laubensee (LA) were clearly separated from a second group, which comprised the populations from Glonnquellen (GL), Kupferbachtal (KU), and Vagen (VA).

The PCoA results were similar to the results from the Bayesian cluster analysis and the Neighbor-Net analysis and also revealed a strong separation of individuals from Swabia and Upper Bavaria (Figure 4). At the subpopulation level, individuals from different subpopulations were mostly admixed in the two studied populations from Swabia (Figure 5) and Upper Bavaria (Figure 6). Only subpopulation Ollarzried Höhe 3 exhibited a slightly stronger level of differentiation.

In the three-level AMOVA, we also observed a very strong genetic differentiation between the two study regions Swabia and Upper Bavaria with a  $\Phi_{PT}$  value of 0.62 (Table 2). Within these regions, genetic differentiation among populations was also strong but weaker

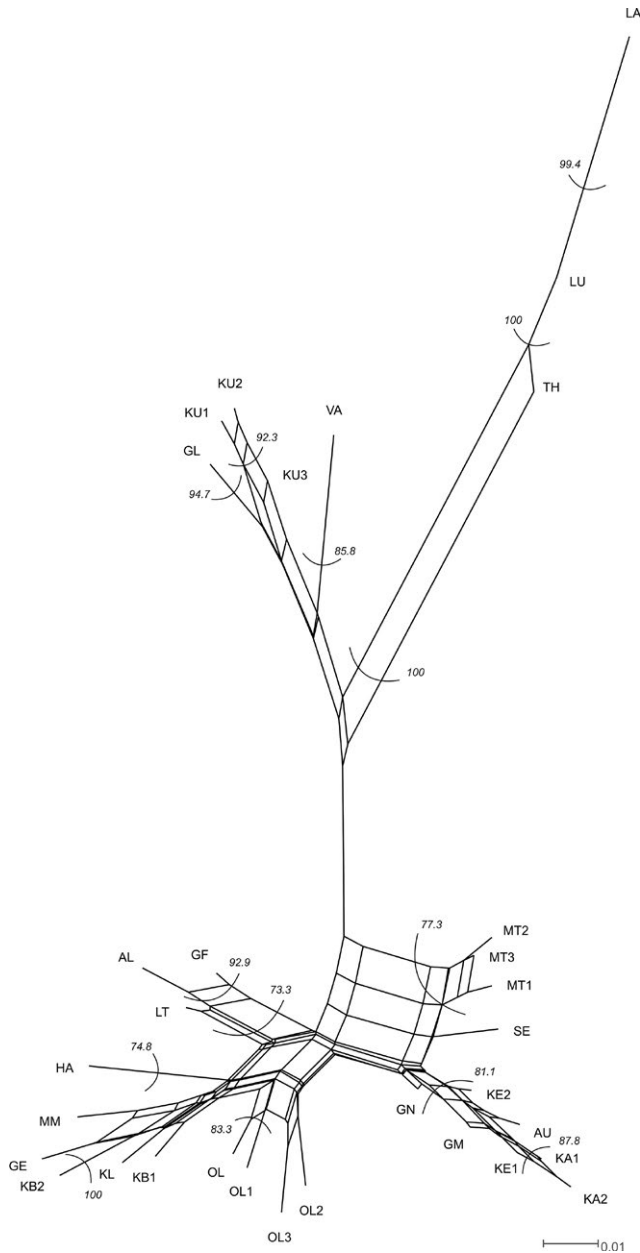
among populations from Swabia ( $\Phi_{PT} = 0.38$ ) than among populations from Upper Bavaria ( $\Phi_{PT} = 0.51$ ). Further analyses revealed only a low level of genetic differentiation among subpopulations in Swabia ( $\Phi_{PT} = 0.13$ ) and Upper Bavaria ( $\Phi_{PT} = 0.12$ ).

A Mantel test including all populations revealed significant correlation between pairwise genetic distances and geographic distances ( $r = .80$ ,  $p = .001$ ). Additional Mantel tests have been implemented for each distribution area (Figure 7). In Swabia, we found only a weak but significant correlation of genetic distance with spatial distance ( $r = .18$ ,  $p = .02$ ). In contrast, this correlation was very strong for populations in Upper Bavaria ( $r = .92$ ,  $p = .001$ ).

## 4 | DISCUSSION

### 4.1 | Genetic diversity

In our study, genetic diversity within the analyzed populations of *C. bavarica* was low but within the range observed for species with similar traits (Hamrick & Godt, 1996; Nybom, 2004; Nybom & Bartish, 2000). Nei's GD of *C. bavarica* was on average 0.10 and, therefore, even slightly lower than previously reported for other rare species



**FIGURE 3** Consensus Neighbor-Net of all *Cochlearia bavarica* populations based on the amplified fragment length polymorphisms data. Populations from Swabia and Upper Bavaria were clearly separated. Bootstrap values >70% are given in italics. The fit value is 93.47

(0.12) in a literature survey based on more than 150 plant species (Reisch & Bernhardt-Römermann, 2014).

Isolation of predominantly small populations is the most important reason for reduced levels of genetic diversity in populations of rare plant species. Indeed, populations of *C. bavarica* are strongly isolated (Fischer et al., 2003), with large geographic distances in between. Moreover, many populations are surrounded by dense forests, which enhances isolation because the forests represent effective barriers for pollinators (Paschke et al., 2002b). Although the species is considered as self-incompatible, Fischer et al. (2003) found a certain degree of

self-compatibility. With increasing distance between populations gene flow decreases, which means that self-pollination and mating events between related individuals may become more frequent and decrease the level of genetic diversity.

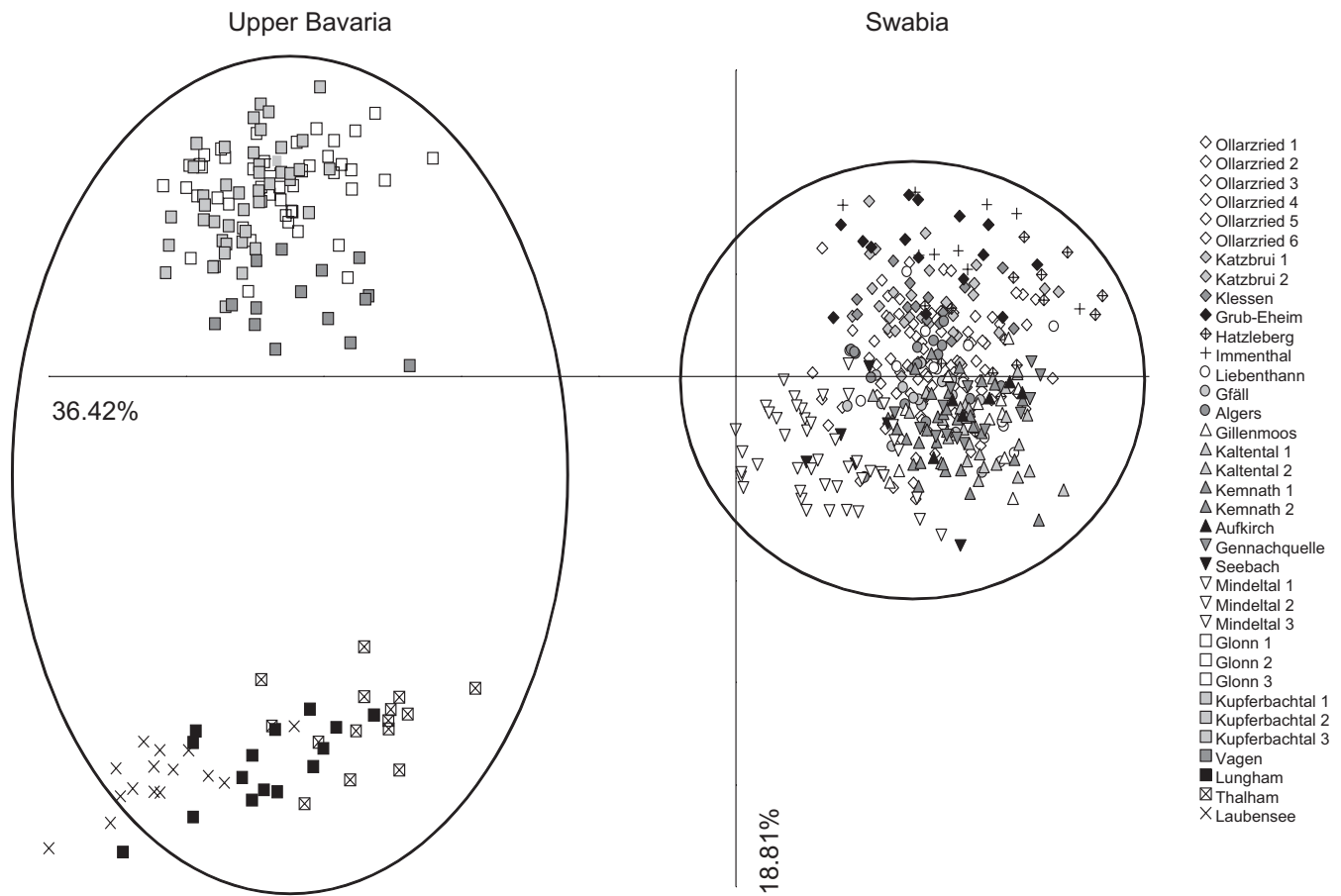
In the last three decades, many populations of *C. bavarica* disappeared due to habitat degradation and nutrient enrichment, which resulted in a proceeding fragmentation. This process of habitat fragmentation is a general threat to biodiversity, reducing species richness within small and isolated habitat patches (Fahrig, 2003). However, fragmentation also affects genetic diversity because population size decreases, and gene flow among small and isolated remnant populations is strongly reduced (Vitousek, 1994). The exchange of pollen and seeds between populations is restricted (Honnay et al., 2006), and consequently, genetic diversity within populations is declining. This process of genetic erosion (Luijten et al., 2000; Oostermeijer, 1996; Young et al., 1996) reduces in the long term the adaptability to changing environmental conditions (Booy et al., 2000; Heywood, 1991) and may even cause extinction (Frankham, 2005).

Even though the level of fragmentation and isolation is stronger in Upper Bavaria than in Swabia, we observed in our study no significant differences in genetic diversity between populations from the two study regions. This is most likely due to the fact that although populations are more frequent in Swabia than in Upper Bavaria, the populations are nevertheless strongly isolated. Differences in frequency seem to be too small to result in different levels of genetic diversity.

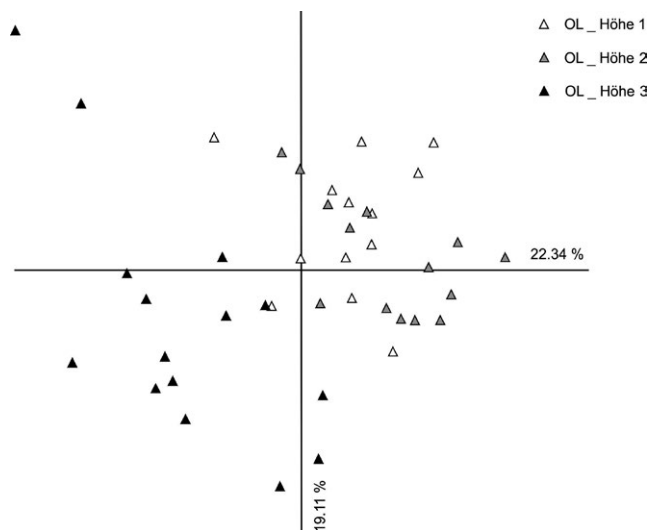
The positive relationship between population size and genetic diversity has been reported in numerous studies (Fischer & Matthies, 1998; Frankham, 1996; Godt, Johnson, & Hamrick, 1996; Hamrick & Godt, 1990; Leimu, Mutikainen, Koricheva, & Fischer, 2006). However, we observed no significant positive correlation between these two parameters. Previous investigations revealed higher levels of allozyme variation (Paschke et al., 2002b) in larger than in smaller populations of *C. bavarica*. However, this study was based on data collected 15 years ago, and the populations of *C. bavarica* further declined since then. This may be the reason why our results differ from the previous study on allozyme variation. Indeed, many investigations revealed no correlation between population size and genetic variation mainly due to lag effects or long-term survival under highly fragmented conditions (Honnay & Jacquemyn, 2007; Kuss, Pluess, Aegisdottir, & Stocklin, 2008).

## 4.2 | Genetic differentiation

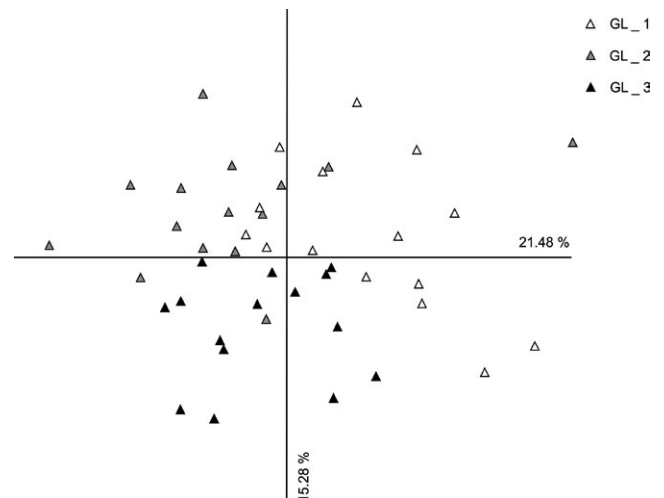
With a  $\Phi_{PT}$  of 0.62, our study revealed a high level of genetic differentiation between populations of *C. bavarica*. The level of differentiation is much higher than previously reported (Reisch & Bernhardt-Römermann, 2014) for other rare species ( $\Phi_{PT}$  of 0.34) and reflects the strong fragmentation and isolation of *C. bavarica*. Generally, genetic differentiation between populations depends on the interplay of gene flow and drift (Slatkin, 1987). Under highly fragmented and isolated conditions, gene flow decreases, while genetic differentiation due to drift increases (Vitousek, 1994). In the case of *C. bavarica*, this process may be enhanced by potential self-pollination



**FIGURE 4** Principal coordinates analysis of all sampled individuals of *Cochlearia bavarica* from Swabia and Upper Bavaria based on amplified fragment length polymorphisms data. Axis 1 explains 36.34% of variance; axis 2 explains 18.81% of variance. Populations from Swabia and Upper Bavaria were clearly separated and formed two groups



**FIGURE 5** Principal coordinates analysis of sampled individuals of *Cochlearia bavarica* from Swabia based on amplified fragment length polymorphisms data. Axis 1 explains 22.34% of variance; axis 2 explains 19.11% of variance. No population grouping could be observed



**FIGURE 6** Principal coordinates analysis of sampled individuals of *Cochlearia bavarica* from Upper Bavaria based on amplified fragment length polymorphisms data. Axis 1 explains 21.48% of variance; axis 2 explains 15.28% of variance. No population grouping could be detected



|   | df  | SS       | MS       | %     | $\Phi_{PT}$ |
|---|-----|----------|----------|-------|-------------|
| Molecular variation between regions                         |     |          |          |       |             |
| Among regions   | 1   | 1,515.19 | 1,515.19 | 34.02 | 0.62***     |
| Among populations   | 30  | 3,011.66 | 100.39   | 27.49 |             |
| Within populations  | 422 | 3,813.43 | 9.04     | 38.49 |             |
| Molecular variation among populations within regions        |     |          |          |       |             |
| Swabia  |     |          |          |       |             |
| Among populations   | 23  | 1,949.35 | 84.75    | 37.57 | 0.38***     |
| Within populations  | 310 | 2,807.03 | 9.055    | 62.43 |             |
| Upper Bavaria   |     |          |          |       |             |
| Among populations   | 7   | 1,062.31 | 151.76   | 51.44 | 0.51***     |
| Within populations  | 112 | 1,006.4  | 8.99     | 48.56 |             |
| Molecular variation among subpopulations within populations |     |          |          |       |             |
| Swabia—Ollarzried-Höhe                                      |     |          |          |       |             |
| Among subpopulations  | 2   | 60.71    | 30.36    | 12.56 | 0.13***     |
| Within subpopulations                                       | 42  | 404.13   | 9.62     | 87.44 |             |
| Upper Bavaria—Gollquellen                                   |     |          |          |       |             |
| Among subpopulations  | 2   | 52.89    | 26.44    | 12.1  | 0.12***     |
| Within subpopulations                                       | 42  | 362.4    | 8.63     | 87.9  |             |

df, degree of freedom; SS, sum of squares; MS, mean squares; %, proportion of genetic variability.

further increasing genetic differentiation (Reisch & Bernhardt-Römermann, 2014).

However, the level of genetic differentiation varied in our study strongly between different spatial scales. Considering the whole distribution range, we found a strong differentiation between the two regions Swabia and Upper Bavaria. This observation is supported by previous studies revealing a number of alleles being characteristic for either Swabian or Upper Bavarian populations (Koch, Huthmann, & Hurka, 1998; Paschke et al., 2002b). Within both regions, we observed a significant correlation of genetic and geographic distances between populations in the Mantel test. However, the correlation was weaker in Swabia than in Upper Bavaria. In Swabia, geographically adjacent populations were not necessarily genetically more similar to each other than geographically more distant populations as shown for the population Seebach and the populations from Mindeltal or the populations Immenthal, Katzbrui, Klessen, and Grub-Eheim. In contrast, we observed a clear pattern of isolation by distance in Upper Bavaria. Furthermore, genetic differentiation between populations was lower in Swabia than in Upper Bavaria. This corresponds to the results of the Mantel test and can be ascribed to the fact that populations are and may also have previously been more frequent in Swabia than in Upper Bavaria. Historical gene flow may, therefore, have been stronger among the more frequent populations in Swabia and more limited among the populations from Upper Bavaria. Referring to the genetic structure within populations, we observed only limited differentiation between subpopulations, which were less than 200 m distant to each other. The analysis of molecular variance revealed only low levels of genetic differentiation, and the cluster analyses indicated the admixture of individuals. Obviously, pollination seems to be hardly limited at this

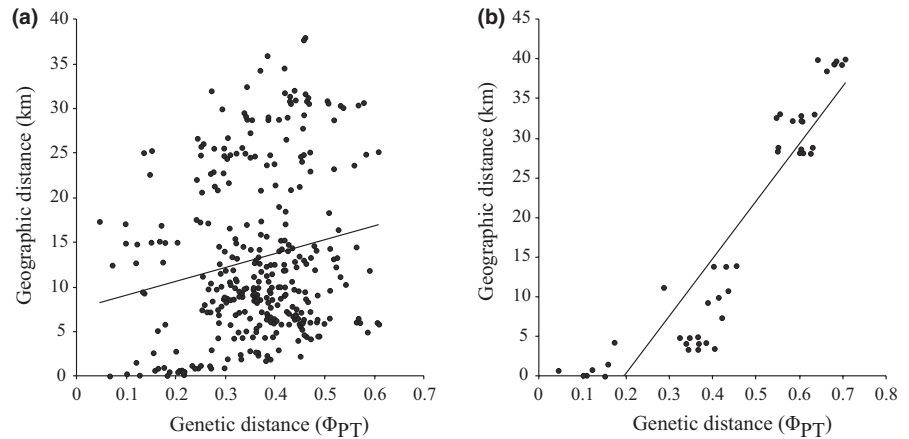
**TABLE 2** Molecular variance within and among populations of *Cochlearia bavarica* calculated in different analyses of molecular variance based on 198 amplified fragment length polymorphisms fragments. Levels of significance are based on 999 iteration steps and are indicated by three asterisks ( $p < .001$ )

distance, which is supported by previous studies providing evidence that gene flow by pollen is normally restricted to the nearest vicinity of plant populations to distances of less than one kilometer (Aavik, Holderegger, & Bolliger, 2014; Kwak, Velterop, & van Andel, 1998).

## 5 | CONCLUSIONS WITH RESPECT TO CONSERVATION

The aim of this study was to increase the success of future population reintroduction and reinforcement, by providing data to avoid negative effects of inbreeding and outbreeding and to preserve the natural genetic pattern of the species. However, it should be kept in mind that every reintroduction project with its species is unique (Guerrant & Kaye, 2007) and that generalizations are, therefore, limited. Nevertheless, it is possible to draw conclusions for a successful reintroduction of *C. bavarica* from our study.

It has been demonstrated that reintroduction success can be enhanced by using plant material from large and stable source populations (Godefroid et al., 2011). In the case of *C. bavarica*, large populations were not necessarily genetically most variable. Since bottlenecks, inbreeding and drift can be avoided best by taking plant material from populations with a high level of genetic diversity we suggest, therefore, to use rather highly variable than large source populations for the reintroduction or the reinforcement of *C. bavarica* such as the population Ollarzried-Boschach in Swabia or the population Lungham in Upper Bavaria. Within these populations, plant material should be collected where possible from 50 up to 200 individuals of different age and size classes (Lauterbach, 2013) all over



**FIGURE 7** Correlation of genetic distance ( $\Phi_{PT}$ ) and geographic distance (km) between populations and subpopulations (Mantel test) for the populations in Swabia (a,  $r = .18$ ,  $p = .02$ ) and the populations in Upper Bavaria (b,  $r = .92$ ,  $p = .001$ ) of *Cochlearia bavarica*

the population to sample genetic diversity representatively (Brown & Briggs, 1991). Moreover, reintroduction success can be improved by acting at a large scale (Frankham et al., 2002). In previous studies, 500 up to 5,000 individuals have proven as a suitable number of individuals for successful reintroduction (Given, 1994; Pavlik, 1996; Reed, 2005). We strongly recommend, therefore, using a large number of individuals for the planned reintroduction of the species.

Although mixing plant material from multiple source populations has been successfully used for reintroduction (Godefroid et al., 2011; Guerrant & Kaye, 2007; Maschinski, Wright, Koptur, & Pinto-Torres, 2013), because using large numbers of unrelated individuals contributes to a large and diverse gene pool (Vergeer et al., 2005), this approach should be handled with care due the risk of outbreeding depression, which reduces fitness and performance (Bischoff et al., 2006; Fischer & Matthies, 1998; Keller et al., 2000; Krauss et al., 2005; Mijnsbrugge et al., 2010; Montalvo & Ellstrand, 2000, 2001). Furthermore, mixing material from different source populations should be avoided if the spatial genetic pattern of a species should be preserved (Gordon, 1994). *Cochlearia bavarica* exhibited a very distinct geographic pattern of genetic variation, and we would, therefore, strongly advise against using multiple source populations for reintroductions and population reinforcement. Instead, we suggest a graduated procedure for the reintroduction of the species, considering the observed pattern of genetic variation. Because our study revealed a very strong level of genetic differentiation between Swabia and Upper Bavaria, the exchange of plant material between these two study regions should be completely avoided. Within these regions, we detected different patterns of genetic variation. Although we found a clear pattern of isolation by distance in Upper Bavaria, the situation was more idiosyncratic in Swabia. Most likely due to historic gene flow, geographically adjacent populations were not necessarily genetically similar to each other. We suggest, therefore, different approaches for the two regions. In Upper Bavaria for reintroduction, plant material should preferably be used from closely located and, therefore, genetically most similar populations to avoid outbreeding. In Swabia, two different approaches are conceivable: if conservationists decide to preserve the current pattern of genetic variation, plant material for reintroduction should be taken from the genetically most similar population, and if they decide that

the present pattern should not be kept since it resulted from former gene flow anyway, plant material should be used from the most variable source population. At the subpopulation level, we detected only a low level of differentiation with a high degree of admixture between subpopulations due to gene flow. The transfer of plant material between subpopulations should, therefore, be possible without changing the natural genetic pattern of the species and without the risk of outbreeding.

It has already been demonstrated that a specific management of the reintroduction sites increases the reintroduction success. Moreover, a reliable and continuous monitoring allows the evaluation of population reintroduction success (Godefroid et al., 2011). Therefore, we strongly recommend a continuous long-term monitoring of the reintroduced *C. bavarica* individuals and a thorough management of the reintroduction sites.

## ACKNOWLEDGMENTS

We are obliged to Andreas Zehm and Ines Langensiepen for their great commitment. Moreover, the study would not have been possible without the support of the conservation project "Löffelkraut & Co." We are, therefore, deeply indebted to German Weber, Peter Harsch, and Gabriela Schneider who collected plant material and provided population size estimations. Furthermore, we would like to thank Petra Schitko for her help in the laboratory, Sabine Fischer for assistance with the maps, and Peter Poschlod for his generous support and many discussions. The study was financially funded by the Bavarian Agency for Nature Conservation.

## CONFLICT OF INTEREST

The authors declare that they have no conflict of interest.

## AUTHOR CONTRIBUTIONS

C.R. conceived and designed the study. F.K. collected the data and performed the analyses. Both authors contributed to manuscript writing.

## ORCID

Christoph Reisch  <http://orcid.org/0000-0003-4098-6516>

## REFERENCES

- Aavik, T., Holderegger, R., & Bolliger, J. (2014). The structural and functional connectivity of the grassland plant *Lychnis flos-cuculi*. *Heredity*, 112, 471–478. <https://doi.org/10.1038/hdy.2013.120>
- Abs, C. (1999). Differences in the life histories of two *Cochlearia* species. *Folia Geobotanica*, 34(1), 33–45.
- Agren, J. (1996). Population size, pollinator limitation, and seed set in the self-incompatible herb *Lythrum salicaria*. *Ecology*, 77(6), 1779–1790. <https://doi.org/10.2307/2265783>
- Aizen, M. A., & Feinsinger, P. (1994). Forest fragmentation, pollination, and plant reproduction in a Chaco dry forest, Argentina. *Ecology*, 75(2), 330–351. <https://doi.org/10.2307/1939538>
- Akeroyd, J., & Wyse Jackson, P. (1995). *A Handbook for Botanical Gardens on the Reintroduction of Plants to the Wild*. Richmond: BGCI.
- Becker, U., Colling, G., Dostal, P., Jakobsson, A., & Matthies, D. (2006). Local adaptation in the monocarpic perennial *Carlina vulgaris* at different spatial scales across Europe. *Oecologia*, 150(3), 506–518. <https://doi.org/10.1007/s00442-006-0534-9>
- Betz, C., Scheuerer, M., & Reisch, C. (2013). Population reinforcement—A glimmer of hope for the conservation of the highly endangered Spring Pasque flower (*Pulsatilla vernalis*). *Biological Conservation*, 168, 161–167. <https://doi.org/10.1016/j.biocon.2013.10.004>
- Bischoff, A., Cremieux, L., Smilauerova, M., Lawson, C. S., Mortimer, S. R., Dolezal, J., ... Müller-Schärer, H. (2006). Detecting local adaptation in widespread grassland species—The importance of scale and local plant community. *Journal of Ecology*, 94(6), 1130–1142. <https://doi.org/10.1111/jec.2006.94.issue-6>
- Bonin, A., Bellemain, E., Bronken Eidesen, P., Pompanon, F., Brochmann, C., & Taberlet, P. (2004). How to track and assess genotyping errors in population genetics studies. *Molecular Ecology*, 13(11), 3261–3273. <https://doi.org/10.1111/j.1365-294X.2004.02346.x>
- Booy, G., Hendriks, R. J. J., Smulders, M. J. M., Van Groenendael, J. M., & Vosman, B. (2000). Genetic diversity and the survival of populations. *Plant Biology*, 2(4), 379–395. <https://doi.org/10.1055/s-2000-5958>
- Brandrud, M. K. (2014). *Polyploidy and ecotype variation in Cochlearia officinalis L. and related species*. MSc thesis, University of Oslo, Oslo.
- Brown, A. H. D., & Briggs, J. D. (1991). Sampling strategies for genetic variation in ex situ collections of endangered plant species. In D. A. Falk, & K. E. Holsinger (Eds.), *Genetics and conservation of rare plants* (pp. 99–122). New York, NY: Oxford University Press.
- Bylebyl, K., Poschlod, P., & Reisch, C. (2008). Genetic variation of *Eryngium campestre* L. (Apiaceae) in Central Europe. *Molecular Ecology*, 17(14), 3379–3388. <https://doi.org/10.1111/mec.2008.17.issue-14>
- Charlesworth, D., & Charlesworth, B. (1987). Inbreeding depression and its evolutionary consequences. *Annual Review of Ecology and Systematics*, 18, 237–268. <https://doi.org/10.1146/annurev.es.18.110187.001321>
- Cires, E., Samain, M. S., Goetghebeur, P., & Prieto, J. A. F. (2011). Genetic structure in peripheral Western European populations of the endangered species *Cochlearia pyrenaica* (Brassicaceae). *Plant Systematics and Evolution*, 297(1–2), 75–85. <https://doi.org/10.1007/s00606-011-0500-9>
- Earl, D. A., & Vonholdt, B. M. (2012). STRUCTURE HARVESTER: A website and program for visualizing STRUCTURE output and implementing the Evanno method. *Conservation Genetics Resources*, 4(2), 359–361. <https://doi.org/10.1007/s12686-011-9548-7>
- Ellstrand, N. C., & Elam, D. R. (1993). Population genetic consequences of small population-size—Implications for plant conservation. *Annual Review of Ecology and Systematics*, 24, 217–242. <https://doi.org/10.1146/annurev.es.24.110193.001245>
- Evanno, G., Regnaut, S., & Goudet, J. (2005). Detecting the number of clusters of individuals using the software structure: A simulation study. *Molecular Ecology*, 14, 2611–2620. <https://doi.org/10.1111/mec.2005.14.issue-8>
- Excoffier, L., Smouse, P. E., & Quattro, J. M. (1992). Analysis of molecular variance inferred from metric distances among DNA haplotypes—Application to human mitochondrial-DNA restriction data. *Genetics*, 131(2), 479–491.
- Fahrig, L. (2003). Effects of habitat fragmentation on biodiversity. *Annual Review of Ecology and Systematics*, 34, 487–515. <https://doi.org/10.1146/annurev.ecolsys.34.011802.132419>
- Falush, D., Stephens, M., & Pritchard, J. K. (2003). Inference of population structure using multilocus genotype data: Linked loci and correlated allele frequencies. *Genetics*, 164(4), 1567–1587.
- Falush, D., Stephens, M., & Pritchard, J. K. (2007). Inference of population structure using multilocus genotype data: Dominant markers and null alleles. *Molecular ecology notes*, 7(4), 574–578. <https://doi.org/10.1111/j.1471-8286.2007.01758.x>
- Felsenstein, J. (1993). PHYLIP (Phylogeny Inference Package) version 3.5 c. Distributed by the author, Department of Genetics, University of Washington, Seattle, 1993. *Progress in Nucleic Acid Research and Molecular Biology*, 33, 19–56.
- Fischer, M., Hock, M., & Paschke, M. (2003). Low genetic variation reduces cross-compatibility and offspring fitness in populations of a narrow endemic plant with a self-incompatibility system. *Conservation Genetics*, 4(3), 325–336. <https://doi.org/10.1023/A:1024051129024>
- Fischer, M., & Matthies, D. (1998). RAPD variation in relation to population size and plant fitness in the rare *Gentianella germanica* (Gentianaceae). *American Journal of Botany*, 85(6), 811. <https://doi.org/10.2307/2446416>
- Frankham, R. (1996). Relationship of genetic variation to population size in wildlife. *Conservation Biology*, 10(6), 1500–1508. <https://doi.org/10.1046/j.1523-1739.1996.10061500.x>
- Frankham, R. (2005). Stress and adaption in conservation genetics. *Journal of Evolutionary Biology*, 18(4), 750–755. <https://doi.org/10.1111/jeb.2005.18.issue-4>
- Frankham, R., Ballou, J. D., & Briscoe, D. A. (2002). *Introduction to conservation genetics*. Cambridge, UK: Cambridge University Press. <https://doi.org/10.1017/CBO9780511808999>
- Friar, E. A., Ladoux, T., Roalson, E. H., & Robichaux, R. H. (2000). Microsatellite analysis of a population crash and bottleneck in the Maune Kea silversword, *Argyroxiphium sandwicense* ssp. *sandwicense*, and its implications for reintroduction. *Molecular Ecology*, 9, 2027–2034. <https://doi.org/10.1046/j.1365-294X.2000.01111.x>
- Given, D. R. (1994). *Principles and practice of plant conservation*. Portland, OR: Timber Press.
- Godefroid, S., Piazza, C., Rossi, G., Buord, S., Stevens, A.-D., Aguruijua, R., ... Vanderborght, T. (2011). How successful are plant species reintroductions? *Biological Conservation*, 144, 672–682. <https://doi.org/10.1016/j.biocon.2010.10.003>
- Godt, M. J. W., Johnson, B. R., & Hamrick, J. L. (1996). Genetic diversity and population size in four rare southern Appalachian plant species. *Conservation Biology*, 10(3), 796–805. <https://doi.org/10.1046/j.1523-1739.1996.10030796.x>
- Gordon, D. R. (1994). Translocation of species into conservation areas—A key for natural-resource managers. *Natural Areas Journal*, 14(1), 31–37.
- Guerrant, E. O., & Kaye, T. N. (2007). Reintroduction of rare and endangered plants: Common factors, questions and approaches. *Australian Journal of Botany*, 55(3), 362–370. <https://doi.org/10.1071/BT06033>
- Hamrick, J. L., & Godt, M. J. W. (1990). Allozyme diversity in plant species. In A. H. D. Brown, M. T. Clegg, A. L. Kahler, & B. S. Weir (Eds.), *Plant population genetics, breeding, and genetic resources* (pp. 43–63). Sunderland, MA: Sinauer.
- Hamrick, J. L., & Godt, M. J. W. (1996). Effects of life history traits on genetic diversity in plant species. *Philosophical Transactions of the Royal*

- Society of London Series B-Biological Sciences*, 351(1345), 1291–1298. <https://doi.org/10.1098/rstb.1996.0112>
- Heywood, J. S. (1991). Spatial analysis of genetic variation in plant populations. *Annual Review of Ecology and Systematics*, 22, 335–355. <https://doi.org/10.1146/annurev.es.22.110191.002003>
- Honnay, O., Coart, E., Butaye, J., Adriaens, D., Van Glabeke, S., & Roldán-Ruiz, I. (2006). Low impact of present and historical landscape configuration on the genetics of fragmented *Anthyllis vulneraria* populations. *Biological Conservation*, 127(4), 411–419. <https://doi.org/10.1016/j.biocon.2005.09.006>
- Honnay, O., & Jacquemyn, H. (2007). Susceptibility of common and rare species to the genetic consequences of habitat fragmentation. *Conservation Biology*, 21(3), 823–831. <https://doi.org/10.1111/cbi.2007.21.issue-3>
- Huson, D. H., & Bryant, D. (2006). Application of phylogenetic networks in evolutionary studies. *Molecular Biology and Evolution*, 23(2), 254–267. <https://doi.org/10.1093/molbev/msj030>
- Joshi, J., Schmid, B., Caldeira, M. C., Dimitrakopoulos, P. G., Good, J., Harris, R., ... Lawton, J. H. (2001). Local adaptation enhances performance of common plant species. *Ecology Letters*, 4(6), 536–544. <https://doi.org/10.1046/j.1461-0248.2001.00262.x>
- Keller, M., Kollmann, J., & Edwards, P. J. (2000). Genetic introgression from distant provenances reduces fitness in local weed populations. *Journal of Applied Ecology*, 37(4), 647–659. <https://doi.org/10.1046/j.1365-2664.2000.00517.x>
- Koch, M., Dobeš, C., Bernhardt, K. G., & Kochjarová, J. (2003). *Cochlearia macrorrhiza* (Brassicaceae): A bridging species between *Cochlearia* taxa from the Eastern Alps and the Carpathians? *Plant Systematics and Evolution*, 242(1–4), 137–147. <https://doi.org/10.1007/s00606-003-0048-4>
- Koch, M., Hurka, H., & Mummenhoff, K. (1996). Chloroplast DNA restriction site variation and RAPD-analyses in *Cochlearia* (Brassicaceae): Biosystematics and speciation. *Nordic Journal of Botany*, 16(6), 585–603. <https://doi.org/10.1111/j.1756-1051.1996.tb00276.x>
- Koch, M., Huthmann, M., & Hurka, H. (1998). Isozymes, speciation and evolution in the polyploid complex *Cochlearia* L. (Brassicaceae). *Botanica Acta*, 111(5), 411–425. <https://doi.org/10.1111/plb.1998.111.issue-5>
- Kovach, W. (2007). *A multivariate statistical package for windows, version 3.1*. Pentraeth, UK: K. C. Services.
- Krauss, S. L., Zawko, G., Bussell, J. D., Taylor, R., & Hood, P. (2005). Towards a genetic provenance atlas for bushland rehabilitation and minesite revegetation in the south west of Western Australia. In S. W. Adkins, P. J. Ainsley, S. M. Bellairs, D. J. Coates & L. C. Bell (Eds.), *Proceedings of the fifth Australian workshop on native seed biology* (pp. 25–35). Brisbane, Qld: Australian Center for Minerals Extension and Research.
- Kunin, W. E. (1997). Population size and density effects in pollination: Pollinator foraging and plant reproductive success in experimental arrays of *Brassica kaber*. *Journal of Ecology*, 85(2), 225–234. <https://doi.org/10.2307/2960653>
- Kuss, P., Pluess, A. R., Aegisdottir, H. H., & Stocklin, J. (2008). Spatial isolation and genetic differentiation in naturally fragmented plant populations of the Swiss Alps. *Journal of Plant Ecology*, 1, 149–159. <https://doi.org/10.1093/jpe/rtn009>
- Kwak, M. M., Velterop, O., & van Andel, J. (1998). Pollen and gene flow in fragmented habitats. *Applied Vegetation Science*, 1, 37–54. <https://doi.org/10.2307/1479084>
- Lauterbach, D. (2013). Ex situ-Kulturen gefährdeter Wildpflanzen-Populationsgenetische Aspekte und Empfehlungen für Besammlungen, Kultivierung und Wiederausbringung. *ANLiegen Natur*, 35(2), 32–39.
- Leimu, R., & Fischer, M. (2008). A meta-analysis of local adaptation in plants. *PLoS ONE*, 3(12), e4010. <https://doi.org/10.1371/journal.pone.0004010>
- Leimu, R., Mutikainen, P., Koricheva, J., & Fischer, M. (2006). How general are positive relationships between plant population size, fitness and genetic variation? *Journal of Ecology*, 94, 942–952. <https://doi.org/10.1111/jec.2006.94.issue-5>
- Luijten, S. H., Dierick, A., Gerard, J., Oostermeijer, B., Raijmann, L. E. L., & Den Nijs, H. C. M. (2000). Population size, genetic variation, and reproductive success in a rapidly declining, self-incompatible perennial (*Arnica montana*) in The Netherlands. *Conservation Biology*, 14(6), 1776–1787. <https://doi.org/10.1046/j.1523-1739.2000.99345.x>
- Lynch, M., & Milligan, B. G. (1994). Analysis of population genetic structure with RAPD markers. *Molecular Ecology*, 3(2), 91–99. <https://doi.org/10.1111/mec.1994.3.issue-2>
- Mantel, N. (1967). The detection of disease clustering and a generalized regression approach. *Cancer Research*, 27(2), 209–220.
- Maschinski, J., Wright, S. J., Koptur, S., & Pinto-Torres, E. C. (2013). When is local the best paradigm? Breeding history influences conservation reintroduction survival and population trajectories in times of extreme climate events. *Biological Conservation*, 159, 277–284. <https://doi.org/10.1016/j.biocon.2012.10.022>
- Matthies, D., Brauer, I., Maibom, W., & Tschardtke, T. (2004). Population size and the risk of local extinction: Empirical evidence from rare plants. *Oikos*, 105(3), 481–488. <https://doi.org/10.1111/oik.2004.105.issue-3>
- Maurer, K., Weyand, A., Fischer, M., & Stöcklin, J. (2006). Old cultural traditions, in addition to land use and topography, are shaping plant diversity of grasslands in the Alps. *Biological Conservation*, 130, 438–446. <https://doi.org/10.1016/j.biocon.2006.01.005>
- McKay, J. K., Christian, C. E., Harrison, S., & Rice, K. J. (2005). “How local is local?”—A review of practical and conceptual issues in the genetics of restoration. *Restoration Ecology*, 13, 432–440. <https://doi.org/10.1111/rec.2005.13.issue-3>
- Mijnsbrugge, K. V., Bischoff, A., & Smith, B. (2010). A question of origin: Where and how to collect seed for ecological restoration. *Basic and Applied Ecology*, 11, 300–311. <https://doi.org/10.1016/j.bae.2009.09.002>
- Montalvo, A. M., & Ellstrand, N. C. (2000). Transplantation of the subshrub *Lotus scoparius*: Testing the home-site advantage hypothesis. *Conservation Biology*, 14(4), 1034–1045. <https://doi.org/10.1046/j.1523-1739.2000.99250.x>
- Montalvo, A. M., & Ellstrand, N. C. (2001). Nonclonal transplantation and outbreeding depression in the subshrub *Lotus scoparius* (Fabaceae). *American Journal of Botany*, 88, 258–269. <https://doi.org/10.2307/2657017>
- Nybohm, H. (2004). Comparison of different nuclear DNA markers for estimating intraspecific genetic diversity in plants. *Molecular Ecology*, 13(5), 1143–1155. <https://doi.org/10.1111/mec.2004.13.issue-5>
- Nybohm, H., & Bartish, I. V. (2000). Effects of life history traits and sampling strategies on genetic diversity estimates obtained with RAPD markers in plants. *Perspectives in Plant Ecology, Evolution and Systematics*, 3(2), 93–114. <https://doi.org/10.1078/1433-8319-00006>
- Olsen, L. N. (2015). *Genetic structure of diploid (2n = 12, 14) Scurvygrasses (Cochlearia) with emphasis on Icelandic populations*. MSc thesis, University of Oslo, Oslo.
- Oostermeijer, J. G. B. (1996). Population size, genetic variation, and related parameters in small, isolated plant populations: A case study. In J. Settele, C. R. Margules, P. Poschod, & K. Henkele (Eds.), *Species survival in fragmented landscapes* (pp. 61–68). Dordrecht, the Netherlands: Kluwer Academic Publishers.
- Ouborg, N. J., Vergeer, P., & Mix, C. (2006). The rough edges of the conservation genetics paradigm for plants. *Journal of Ecology*, 94(6), 1233–1248. <https://doi.org/10.1111/jec.2006.94.issue-6>
- Paschke, M., Abs, C., & Schmid, B. (2002a). Effects of population size and pollen diversity on reproductive success and offspring size in the narrow endemic *Cochlearia bavarica* (Brassicaceae). *American Journal of Botany*, 89(8), 1250–1259. <https://doi.org/10.3732/ajb.89.8.1250>
- Paschke, M., Abs, C., & Schmid, B. (2002b). Relationship between population size, allozyme variation, and plant performance in the narrow

- endemic *Cochlearia bavarica*. *Conservation Genetics*, 3(2), 131–144. <https://doi.org/10.1023/A:1015293530776>
- Paschke, M., Bernasconi, G., & Schmid, B. (2003). Population size and identity influence the reaction norm of the rare, endemic plant *Cochlearia bavarica* across a gradient of environmental stress. *Evolution*, 57(3), 496–508. <https://doi.org/10.1111/evo.2003.57.issue-3>
- Pavlik, B. M. (1996). Defining and measuring success. In D. A. Falk, C. I. Millar, & M. Olwell (Eds.), *Restoring diversity: Strategies for the reintroduction of endangered plants* (pp. 127–155). Washington, D.C.: Island Press.
- Peakall, R., & Smouse, P. E. (2006). GENALEX 6: Genetic analysis in Excel. Population genetic software for teaching and research. *Molecular ecology notes*, 6(1), 288–295. <https://doi.org/10.1111/men.2006.6.issue-1>
- Poschlod, P., Bakker, J. P., & Kahmen, S. (2005). Changing land use and its impact on biodiversity. *Basic and Applied Ecology*, 6(2), 93–98. <https://doi.org/10.1016/j.baae.2004.12.001>
- Poschlod, P., & WallisDeVries, M. F. (2002). The historical and socio-economic perspective of calcareous grasslands—Lessons from the distant and recent past. *Biological Conservation*, 104(3), 361–376. [https://doi.org/10.1016/S0006-3207\(01\)00201-4](https://doi.org/10.1016/S0006-3207(01)00201-4)
- Pritchard, J. K., Stephens, M., & Donnelly, P. (2000). Inference of population structure using multilocus genotype data. *Genetics*, 155(2), 945–959.
- Pritchard, J. K., Wen, X., & Falush, D. (2007). Documentation for structure software: Version 2.3. Retrieved from <http://pritch.bsd.uchicago.edu/structure.html>
- Reed, D. H. (2005). Relationships between population size and fitness. *Conservation Biology*, 19(2), 563–568. <https://doi.org/10.1111/cbi.2005.19.issue-2>
- Reed, D. H., Lowe, E. H., Briscoe, D. A., & Frankham, R. (2003). Fitness and adaptation in a novel environment: Effect of inbreeding, prior environment, and lineage. *Evolution*, 57(8), 1822–1828. <https://doi.org/10.1111/evo.2003.57.issue-8>
- Reisch, C. (2007). Genetic structure of *Saxifraga tridactylites* (Saxifragaceae) from natural and man-made habitats. *Conservation Genetics*, 8(4), 893–902. <https://doi.org/10.1007/s10592-006-9244-4>
- Reisch, C. (2008). Glacial history of *Saxifraga paniculata* (Saxifragaceae)—Molecular biogeography of disjunct arctic-alpine species in Europe and North America. *Biological Journal of the Linnean Society*, 93, 385–398. <https://doi.org/10.1111/j.1095-8312.2007.00933.x>
- Reisch, C., & Bernhardt-Römermann, M. (2014). The impact of study design and life history traits on genetic variation of plants determined with AFLPs. *Plant Ecology*, 215(12), 1493–1511. <https://doi.org/10.1007/s11258-014-0409-9>
- Reisch, C., & Poschlod, P. (2009). Land use affects flowering time: Seasonal and genetic differentiation in the grassland plant *Scabiosa columbaria*. *Evolutionary Ecology*, 23(5), 753–764. <https://doi.org/10.1007/s10682-008-9270-4>
- Robichaux, R. H., Friar, E. A., & Mount, D. W. (1997). Molecular genetic consequences of a population bottleneck associated with reintroduction of the Mauna Kea silversword (*Argyroxiphium sandwicense* ssp. *sandwicense* [Asteraceae]). *Conservation Biology*, 11(5), 1140–1146. <https://doi.org/10.1046/j.1523-1739.1997.96314.x>
- Rogers, S. O., & Bendich, A. J. (1994). Extraction of total cellular DNA from plants, algae and fungi. In Gelvin, S.B. & Schilperoort, R.A (Eds.), *Plant molecular biology manual* (pp. 183–190). Dordrecht: Springer.
- Schleunig, M., Niggemann, M., Becker, U., & Matthies, D. (2009). Negative effects of habitat degradation and fragmentation on the declining grassland plant *Trifolium montanum*. *Basic and Applied Ecology*, 10, 61–69. <https://doi.org/10.1016/j.baae.2007.12.002>
- Slatkin, M. (1987). Gene flow and the geographic structure of natural populations. *Science*, 236, 787–792. <https://doi.org/10.1126/science.3576198>
- Storkey, J., Meyer, S., Still, K. S., & Leuschner, C. (2012). The impact of agricultural intensification and land-use change on the European arable flora. *Proceedings. Biological Sciences*, 279(1732), 1421–1429. <https://doi.org/10.1098/rspb.2011.1686>
- Thuiller, W. (2007). Biodiversity: Climate change and the ecologist. *Nature*, 448(7153), 550–552. <https://doi.org/10.1038/448550a>
- Van Treuren, R., Bijlsma, R., Ouborg, N. J., & Kwak, M. M. (1994). Relationships between plant density, outcrossing rates and seed set in natural and experimental populations of *Scabiosa columbaria*. *Journal of Evolutionary Biology*, 7(3), 287–302. <https://doi.org/10.1046/j.1420-9101.1994.7030287.x>
- Vekemans, X. (2002). AFLP-SURV version 1.0. Distributed by the author. Bruxelles, Belgium: Laboratoire de Génétique et Ecologie Végétale, Université Libre de Bruxelles.
- Vergeer, P., van den Berg, L. J., Roelofs, J. G. M., & Ouborg, N. J. (2005). Single-family versus multi-family introductions. *Plant Biology (Stuttgart, Germany)*, 7(5), 509–515. <https://doi.org/10.1055/s-2005-865904>
- Vitousek, P. M. (1994). Beyond global warming—Ecology and global change. *Ecology*, 75(7), 1861–1876. <https://doi.org/10.2307/1941591>
- Vogt, R. (1985). Die *Cochlearia pyrenaica*-Gruppe in Zentraleuropa. *Berichte der Bayerischen Botanischen Gesellschaft*, 56, 5–52.
- Vos, P., Hogers, R., Bleeker, M., Reijans, M., van de Lee, T., Hornes, M., ... Zabeau, M. (1995). AFLP: A new technique for DNA fingerprinting. *Nucleic Acids Research*, 23(21), 4407–4414. <https://doi.org/10.1093/nar/23.21.4407>
- Yeh, F. C., Yang, R. C., Boyle, T. B. J., Ye, Z. H., & Mao, J. X. (1997). POPGENE, the user-friendly shareware for population genetic analyses. University of Alberta in Edmonton, Canada, AB: Molecular Biology and Biotechnology Centre.
- Young, A., Boyle, T., & Brown, T. (1996). The population genetic consequences of habitat fragmentation for plants. *Trends in Ecology & Evolution*, 11(10), 413–418. [https://doi.org/10.1016/0169-5347\(96\)10045-8](https://doi.org/10.1016/0169-5347(96)10045-8)
- Young, T. P., Petersen, D. A., & Clary, J. J. (2005). The ecology of restoration: Historical links, emerging issues and unexplored realms. *Ecology Letters*, 8(6), 662–673. <https://doi.org/10.1111/ele.2008.8.issue-6>

**How to cite this article:** Kaulfuß F, Reisch C. Reintroduction of the endangered and endemic plant species *Cochlearia bavarica*—Implications from conservation genetics. *Ecol Evol*. 2017;7:11100–11112. <https://doi.org/10.1002/ece3.3596>