





Stabilizing hidden room-temperature ferroelectricity via a metastable atomic distortion pattern

Jeong Rae Kim^{1,2,9}, Jinhyuk Jang^{3,9}, Kyoung-June Go³, Se Young Park^{1,2,4} , Chang Jae Roh⁵, John Bonini⁶, Jinkwon Kim^{1,2}, Han Gyeol Lee^{1,2}, Karin M. Rabe⁶, Jong Seok Lee⁵, Si-Young Choi³ , Tae Won Noh^{1,2}  & Daesu Lee^{7,8} 

Nonequilibrium atomic structures can host exotic and technologically relevant properties in otherwise conventional materials. Oxygen octahedral rotation forms a fundamental atomic distortion in perovskite oxides, but only a few patterns are predominantly present at equilibrium. This has restricted the range of possible properties and functions of perovskite oxides, necessitating the utilization of nonequilibrium patterns of octahedral rotation. Here, we report that a designed metastable pattern of octahedral rotation leads to robust room-temperature ferroelectricity in CaTiO_3 , which is otherwise nonpolar down to 0 K. Guided by density-functional theory, we selectively stabilize the metastable pattern, distinct from the equilibrium pattern and cooperative with ferroelectricity, in heteroepitaxial films of CaTiO_3 . Atomic-scale imaging combined with deep neural network analysis confirms a close correlation between the metastable pattern and ferroelectricity. This work reveals a hidden but functional pattern of oxygen octahedral rotation and opens avenues for designing multifunctional materials.

¹Center for Correlated Electron Systems, Institute for Basic Science (IBS), Seoul 08826, Korea. ²Department of Physics and Astronomy, Seoul National University, Seoul 08826, Korea. ³Department of Materials Science and Engineering, Pohang University of Science and Technology (POSTECH), Pohang 37673, Korea. ⁴Department of Physics, Soongsil University, Seoul 07027, Korea. ⁵Department of Physics and Photon Science, Gwangju Institute of Science and Technology (GIST), Gwangju 61005, Korea. ⁶Department of Physics and Astronomy, Rutgers University, Piscataway, NJ 08854-8019, USA. ⁷Department of Physics, Pohang University of Science and Technology (POSTECH), Pohang 37673, Korea. ⁸Asia Pacific Center for Theoretical Physics, Pohang 37673, Korea. ⁹These authors contributed equally: Jeong Rae Kim, Jinhyuk Jang. ✉email: sp2829@ssu.ac.kr; youngchoi@postech.ac.kr; twnoh@snu.ac.kr; dlee1@postech.ac.kr

Despite their simple structure, ABO_3 perovskites offer a wide range of functionalities including superconductivity, metal-insulator transition, ferroelectricity, and ferromagnetism. These functionalities largely originate from the rotation of corner-connected BO_6 octahedra (Fig. 1a), which allows the ABO_3 family to host a variety of cations. Furthermore, the angle and pattern of oxygen octahedral rotation (OOR)¹ directly influence electrical conductivity², magnetic superexchange interaction³, dielectric properties⁴, and so on. While this allows OOR to serve as a fundamental parameter for understanding functional perovskites, most perovskite bulks adopt the orthorhombic ($Pnma$) structure, corresponding to the $a^-b^+a^-$ OOR pattern in Glazer notation (Fig. 1a, b)⁵. Such predominance of the $a^-b^+a^-$ OOR pattern has prevented full exploitation of functional perovskites.

In particular, the most common $a^-b^+a^-$ OOR pattern has been shown to compete with an important functional property, namely ferroelectricity⁴. As a result, most $Pnma$ perovskites remain paraelectric, even down to 0 K, whereas their cubic phases could have instability for both ferroelectric and OOR distortions. This has motivated recent attempts to utilize nonequilibrium OOR, e.g., via artificial heteroepitaxy^{6,7}. Despite extensive works^{8–11}, however, there is still a lack of studies on engineering the pattern itself of OOR and then generating functionalities.

In this work, we designed a means to stabilize a nonequilibrium OOR pattern of $CaTiO_3$ in oxide heterostructures. Unlike the original $a^-b^+a^-$ pattern, the metastable OOR pattern appears to be compatible with ferroelectricity, leading to the emergence of room-temperature ferroelectricity.

Moreover, we combined transmission electron microscopy techniques with deep neural network analysis and revealed the strong coupling between the metastable OOR pattern and ferroelectricity. Our work suggests that engineering the nonequilibrium OOR pattern unveils the hidden functionalities of materials.

Results

Theoretical search for nonequilibrium OOR patterns of $CaTiO_3$. Taking $CaTiO_3$ —the first discovered perovskite compound—as a model system, we explore the feasibility of achieving ferroelectricity via its nonequilibrium OOR patterns (Supplementary Fig. S1). Bulk $CaTiO_3$ has the $Pnma$ space group symmetry and the $a^-b^+a^-$ OOR pattern below 1512 K (ref. 12) and exhibits a stable nonpolar, paraelectric phase down to 0 K; bulk $CaTiO_3$ exhibits antipolar Ca displacements. It is notable that $CaTiO_3$ is an incipient ferroelectric material with a negative Curie-Weiss temperature^{13–15}, so that it has potential to be engineered into a ferroelectric phase. Of the 23 possible OOR patterns, we focus on 10 patterns, since the other patterns rarely occur in a single ABO_3 compound⁵. According to our density-functional theory (DFT) calculations (Fig. 1c), the nonpolar $Pnma$ with the $a^-b^+a^-$ OOR pattern has the lowest energy, consistent with the bulk crystal structure of $CaTiO_3$. The highest energy is seen in the cubic $Pm\bar{3}m$ without OOR (i.e., $a^0a^0a^0$), which is highly unstable due to the small size of the A-site Ca ion¹⁶. The other eight OOR patterns are located in between and, to the best of our knowledge, have not been reported in bulk

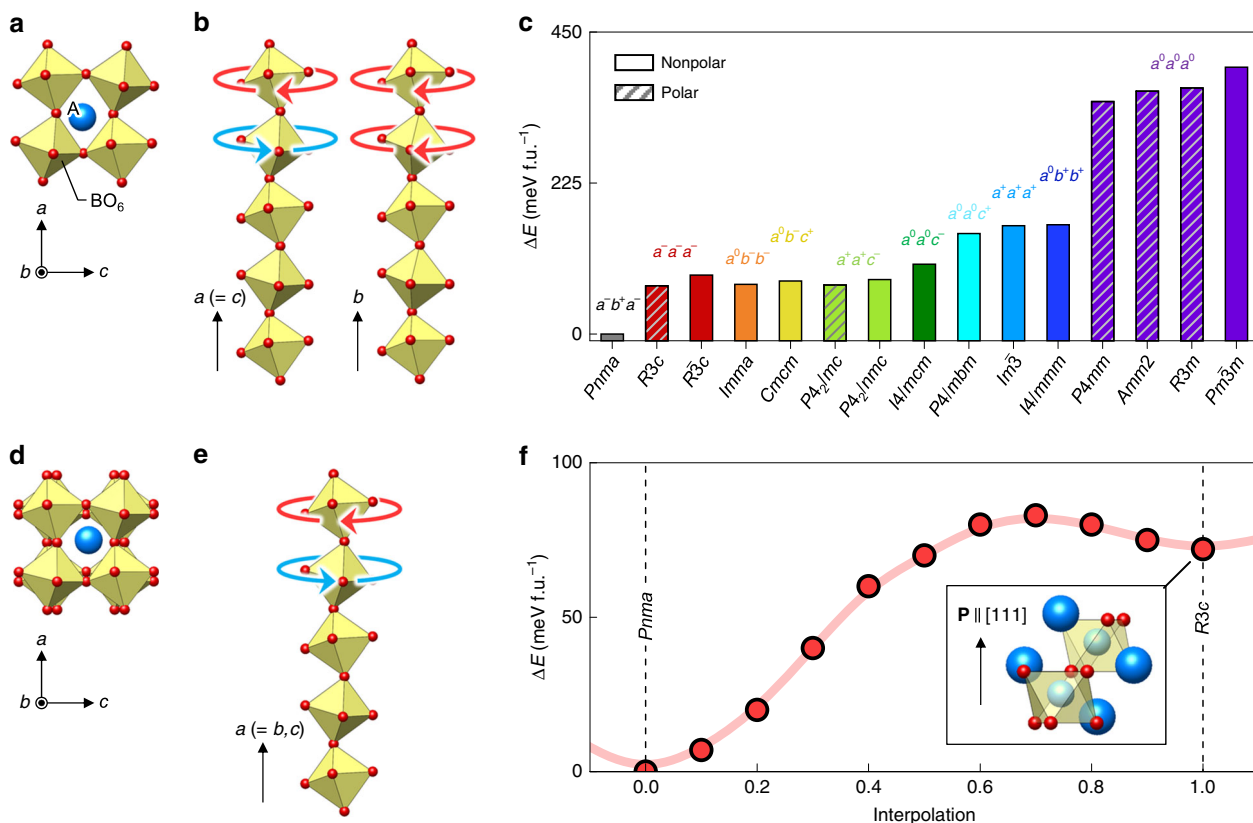


Fig. 1 Hidden ferroelectricity of $CaTiO_3$ in its metastable oxygen octahedral rotation (OOR) pattern. **a** Atomic structure of ABO_3 perovskite with an $a^-b^+a^-$ OOR pattern ($Pnma$). **b** $a^-b^+a^-$ OOR pattern, showing out-of-phase rotation along the a - and c -axes and in-phase rotation along the b -axis. **c** Density-functional theory (DFT) calculation of the energy landscape for various OOR patterns of $CaTiO_3$. The total energy for $Pnma$ is set to zero. Five structures ($R3c$, $P4_2/mc$, $P4mm$, $Amm2$, and $R3m$) are predicted to be polar. **d** Atomic structure of ABO_3 perovskite with an $a^-a^-a^-$ OOR pattern ($R3c$ or $R\bar{3}c$). **e** $a^-a^-a^-$ OOR pattern, showing out-of-phase rotation along all the axes. **f** Energy barrier between the $Pnma$ and metastable $R3c$ phases of $CaTiO_3$. We interpolate the transition between the $Pnma$ and $R3c$ structures by smoothly changing the OOR along the b -axis.

CaTiO₃. Our theory predicts that among the eight OOR patterns, $a^-a^-a^-$ and $a^+a^+c^-$ allow for polar structures with the space groups $R3c$ and $P4_2/mc$, respectively. Given their moderate energy cost (as small as 100 meV f.u.⁻¹), our DFT calculations indicate the possibility to thermodynamically stabilize the nonequilibrium $a^-a^-a^-$ or $a^+a^+c^-$ pattern and then achieve ferroelectricity in CaTiO₃.

Here, we take $a^-a^-a^-$ (Fig. 1d, e) as the target OOR pattern of CaTiO₃ due to its experimental accessibility, which is discussed later. Our first-principles calculation finds no unstable phonon mode in the polar $R3c$ with the $a^-a^-a^-$ OOR pattern (Supplementary Fig. S3), indicating its metastability (Fig. 1f). The calculated polarization value, P , of the $R3c$ -CaTiO₃ is 44 $\mu\text{C cm}^{-2}$, and the energy barrier, ΔE , for polarization switching is 16 meV f.u.⁻¹. These values are comparable to those of archetypal ferroelectric perovskites¹⁷, such as BaTiO₃ ($P = 20 \mu\text{C cm}^{-2}$, $\Delta E = 11.6 \text{ meV f.u.}^{-1}$) and PbTiO₃ ($P = 78 \mu\text{C cm}^{-2}$, $\Delta E = 32.6 \text{ meV f.u.}^{-1}$), whose ferroelectric transition temperatures are 393 and 760 K, respectively. Therefore, artificial stabilization of the metastable $a^-a^-a^-$ OOR pattern may result in robust room-temperature ferroelectricity—hitherto hidden at equilibrium—in CaTiO₃.

Heteroepitaxial stabilization of $R3c$ -CaTiO₃. While the $R3c$ -CaTiO₃ is metastable in bulk, with a calculated energy barrier of 10 meV f.u.⁻¹ (Fig. 1f), heteroepitaxial growth could make it more stable. Through simply modulating OOR angles¹⁸, it might be difficult to convert the OOR pattern itself from $a^-b^+a^-$ (i.e., corresponding to $Pnma$) to $a^-a^-a^-$ (i.e., corresponding to $R3c$). To overcome this, we constrain CaTiO₃ to the pseudo-cubic (111)_{pc} plane of the LaAlO₃ substrate, which has the $a^-a^-a^-$ OOR pattern (note that we use a pseudo-cubic unit cell throughout and omit the pc subscript hereafter). Figure 2a, b emphasize that on the (111) plane, $a^-b^+a^-$ and $a^-a^-a^-$ OORs lead to disparate lattice symmetries; among the ten possible OOR patterns, only the $a^-a^-a^-$ pattern allows for a regular hexagon network of A-site ions. Furthermore, the (111) interface maximizes the octahedral connectivity through three metal-oxygen-metal

bonding (Supplementary Fig. S5), so that the OOR pattern of CaTiO₃ could more likely follow that of LaAlO₃. Accordingly, coherent, epitaxial growth of CaTiO₃ films on an LaAlO₃ (111) substrate could effectively stabilize the $a^-a^-a^-$ OOR pattern (Fig. 2c) in CaTiO₃.

We fabricate high-quality CaTiO₃ films on an LaAlO₃ (111) substrate using a pulsed laser deposition (PLD) technique (see “Methods”). As a nonequilibrium growth method¹⁹, PLD could assist in achieving the metastable $a^-a^-a^-$ OOR pattern in CaTiO₃ films. Atomic force microscopy (Supplementary Fig. S8b) and X-ray diffraction (XRD) (Supplementary Fig. S8c) confirm that the films have smooth surfaces and high crystallinity. Previous works have reported experimental difficulties in achieving sharp, (111)-oriented heterointerfaces of perovskite oxides due to their high surface polarity²⁰. In this work, we utilize in situ annealing of an LaAlO₃ substrate in ultra-high vacuum to achieve an atomically sharp CaTiO₃/LaAlO₃ (111) interface (“Methods” and Supplementary Fig. S9)²¹. Given this sharp interface, the OOR pattern in CaTiO₃ (111) films could follow that (i.e., the $a^-a^-a^-$ pattern) of the underlying LaAlO₃ substrate.

Optical characterization of polar symmetry in CaTiO₃ (111) films. Using optical second harmonic generation (SHG) polarimetry, we identify the macroscopic polar point-group symmetry of CaTiO₃ (111) films. Figure 2d shows a clear SHG signal in CaTiO₃ (111) films, which best fits with the polar point group of $3m$. This is consistent with our prediction that the CaTiO₃/LaAlO₃ (111) heteroepitaxy could stabilize the polar $R3c$ phase with an $a^-a^-a^-$ OOR pattern in CaTiO₃, belonging to the polar point group of $3m$. Furthermore, the SHG studies show a typical thickness dependence of ultrathin ferroelectric films. While we observe a persistent SHG signal in films thicker than 2.6 nm (i.e., 12 unit cells), the SHG signal disappears in films thinner than 1.3 nm (6 unit cells; Supplementary Fig. S11). This size effect is an intrinsic characteristic in ultrathin ferroelectrics²², wherein ferroelectricity disappears at a finite critical thickness, e.g., due to depolarization field. Therefore, the observed SHG signal should

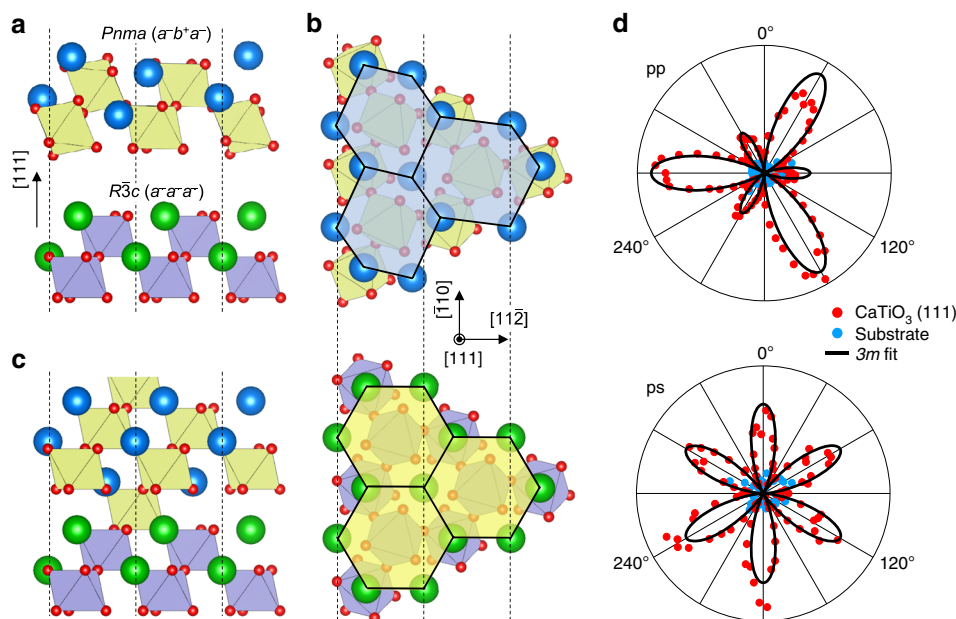


Fig. 2 Heteroepitaxial stabilization of the $a^-a^-a^-$ OOR pattern in CaTiO₃. **a** Structural mismatch between the $a^-b^+a^-$ and $a^-a^-a^-$ OOR patterns in the (111) plane. **b** Disparate in-plane lattice symmetries of the $a^-b^+a^-$ and $a^-a^-a^-$ OOR patterns in the (111) plane. **c** Schematic diagram of OOR pattern engineering in the (111)-oriented heterointerface between $a^-b^+a^-$ and $a^-a^-a^-$ structures. **d** Optical second harmonic generation (SHG) signals from 2.6 nm-thick CaTiO₃ (111) film (red) and LaAlO₃ substrate (blue). “p” (“s”) indicates parallel (perpendicular) polarization of light with respect to the plane of incidence.

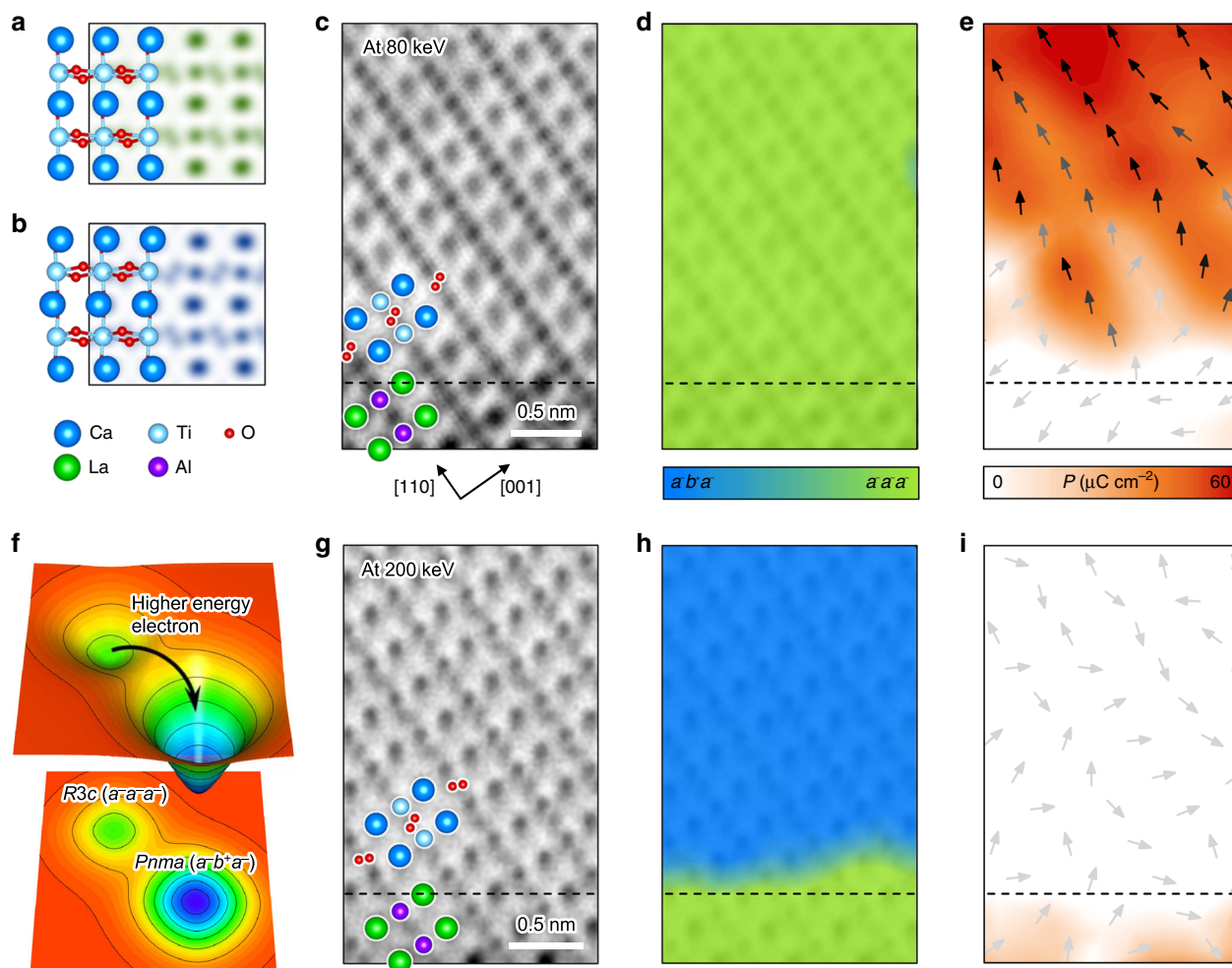


Fig. 3 Atomic-scale analysis of the OOR pattern and polarity in CaTiO_3 films. Simulated annular bright-field scanning transmission electron microscopy (ABF-STEM) images along the zone axis of $[\bar{1}\bar{1}0]$ for $a^-a^-a^-$ (a) and $[101]$ for $a^-b^+a^-$ (b) OOR patterns. c–i (c) and (g) show ABF-STEM images of 2.6 nm-thick CaTiO_3 (111) film along the zone axis of $[\bar{1}\bar{1}0]$, measured using 80-keV (c) and 200-keV (g) electron kinetic energy. d, h display the maps of OOR patterns, identified by deep neural network analysis, in the same regions as in (c) and (g), respectively. Color indicates the probability of each OOR pattern. e, i present polarization vectors for each unit cell of the same regions as in (c) and (g), respectively. Arrows denote the polarization direction; the stronger the polarization, the darker the arrow color. Strength of polarization is also expressed as a color map, ranging from white (weak) to red (strong). f illustrates a schematic free energy landscape, showing the relaxation of R3c state ($a^-a^-a^-$) into Pnma state ($a^-b^+a^-$).

arise solely from the bulk of CaTiO_3 (111) films, rather than from their surfaces and interfaces.

Atomic-scale imaging of OOR patterns and polarization.

Scanning transmission electron microscopy (STEM) can provide atomic-scale information on the OOR pattern, as well as ferroelectricity, of the films. In particular, annular bright-field STEM (ABF-STEM) images are sensitive to light atoms (e.g., oxygen)²³, making them an effective tool for visualizing OOR patterns. Because OOR generally causes elongation of oxygen peaks in ABF-STEM images, qualitative analysis of such elongated oxygen peaks can provide the means to identify the OOR pattern in the films²⁴. Indeed, our ABF-STEM simulations, based on the calculated atomic structures in Fig. 1c, indicate that each OOR pattern has its unique oxygen peak feature in the $[1\bar{1}0]$ projection (Supplementary Fig. S12): the $a^-a^-a^-$ OOR pattern has the elongated oxygen peaks aligned in one crystalline direction (Fig. 3a) and the $a^-b^+a^-$ pattern has the elongated oxygen peaks arranged in a zigzag-like pattern (Fig. 3b). Importantly, this

unique feature of the oxygen peak shapes allows the OOR pattern of the CaTiO_3 films to be identified.

Furthermore, we employ a deep neural network approach to identify the OOR patterns from the measured ABF-STEM images (see “Methods”)^{25,26}. Identification of OOR patterns could be ambiguous, e.g., due to nontrivial experimental noise, difficulty in the quantification of shape information, or infinitesimal differences among OOR shapes. The deep neural network approach, however, can help us to identify OOR patterns beyond human cognition. Figure 3c displays the measured ABF-STEM image of CaTiO_3 (111) films with a zone axis of $[\bar{1}\bar{1}0]$, exhibiting oxygen peaks elongated along the same direction. This is consistent with the simulated ABF-STEM image for the $a^-a^-a^-$ OOR pattern (Fig. 3a). Our deep neural network analysis indeed identifies the $a^-a^-a^-$ OOR pattern from the measured ABF-STEM image of CaTiO_3 (111) films (Fig. 3d). The ABF-STEM image also confirms that such an $a^-a^-a^-$ OOR pattern coexists with electric polarization in CaTiO_3 (111) films (Fig. 3e), which is in good agreement with our theoretical prediction and SHG results. [Fig. 3e shows rather suppressed electric polarization near the

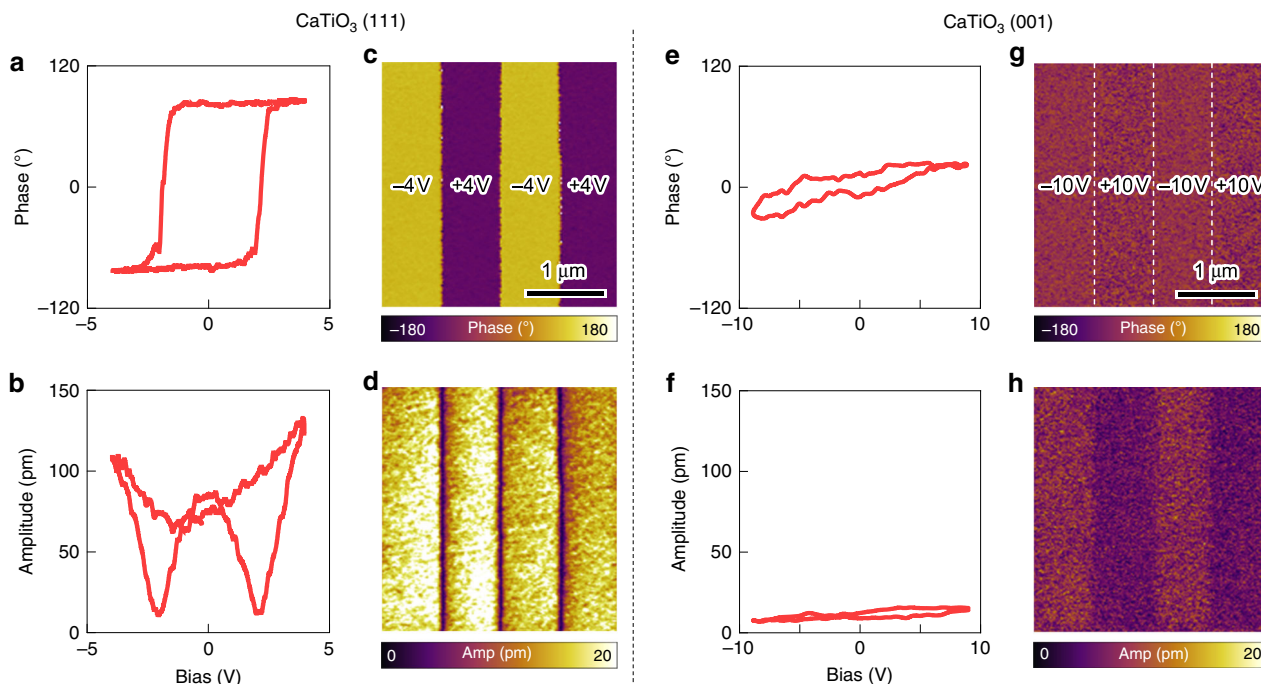


Fig. 4 Switchable and stable polarization in CaTiO_3 (111) films. Switching behavior of the piezoelectric phase (a) and amplitude (b) in 2.6 nm-thick CaTiO_3 (111) film. Bipolar domain patterns, written on the same CaTiO_3 (111) film. Piezoelectric phase (c) and amplitude (d) show two stable ferroelectric domains. Nonferroelectric behavior of the piezoelectric phase (e) and amplitude (f) in 3.8 nm-thick CaTiO_3 (001) film. The absence of domain patterns in the same CaTiO_3 (001) film. Piezoelectric phase (g) and amplitude (h) show the absence of ferroelectric domains.

bottom interface, which might originate from interface dipoles (Supplementary Fig. S6).] In stark contrast, CaTiO_3 (001) films, which differ from CaTiO_3 (111) films only in their crystalline orientation, show the $a^-b^+a^-$ OOR pattern and no electric polarization (Supplementary Fig. S13i–l). This is consistent with the nonpolar $Pnma$ phase of bulk CaTiO_3 (Fig. 3b). These results thus firmly validate our heteroepitaxial design principle for stabilizing the nonequilibrium OOR pattern and achieving polar CaTiO_3 at room temperature.

Demonstration of switchable polarization. Then, using piezo-response force microscopy (PFM), we examine whether the electric polarization is switchable and stable—the signature of ferroelectricity—at room temperature. To apply an electric field, we prepare CaTiO_3 films on a LaAlO_3 substrate buffered with LaNiO_3 films as the bottom electrode. Given that LaNiO_3 has the $R\bar{3}c$ structure with an $a^-a^-a^-$ OOR pattern, the same heteroepitaxy control of the OOR patterns in CaTiO_3 (Fig. 2c) would work. Our PFM measurement reveals clear hysteretic behavior (Fig. 4a, b), with a phase difference of around 180° in CaTiO_3 (111) films, consistent with the typical ferroelectric responses under PFM. In contrast, CaTiO_3 (001) films show almost no change in the PFM phase, and a negligible PFM amplitude (Fig. 4e, f); accordingly, we exclude extrinsic electrochemical effects²⁷ as the origin of the PFM response in (111) films. Figure 4 verifies that the [111]-directed film growth is essential in stabilizing the ferroelectric state, as it not only guarantees the unique geometric constraint (Fig. 2), but also maximizes octahedral connectivity (Supplementary Fig. S5). Bipolar domain patterns (Fig. 4c, d) were writable and stable on CaTiO_3 (111) films. The pristine domain structure of CaTiO_3 (111) films was difficult to define (Supplementary Fig. S14); however, it may be attributable to the ferroelectric domain structure (Supplementary Fig. S18),

which can assume a mono-domain configuration upon electrical poling (Fig. 4c, d).

We examined the stability of the written domains by monitoring the PFM signal as a function of time (Supplementary Fig. S15). The PFM signal gradually decays, following a power-law with a decay exponent of 0.145. Although comparable decay exponents have been reported in the relaxor ferroelectrics²⁸, a similar relaxation has also been observed in prototypical ferroelectric films at the ultrathin limit²⁹. Based on our comprehensive DFT and STEM studies, we attribute the relaxation behavior of the ferroelectric $R3c$ - CaTiO_3 to the huge depolarization field in ultrathin ferroelectric films. Taken together, our theoretical and experimental results consistently demonstrate that artificial stabilization of the nonequilibrium OOR pattern leads to robust room-temperature ferroelectricity in otherwise nonpolar CaTiO_3 films.

Discussion

Our results highlight that we achieve both selective stabilization and atomic-scale imaging of the ferroelectrically active, nonequilibrium $a^-a^-a^-$ OOR pattern. Importantly, because nonequilibrium states inherently involve complex structural instabilities, it has been difficult to selectively stabilize them and resolve their atomic structures³⁰. However, by using the moderate conditions in the STEM experiments (e.g., electron kinetic energy of 80 keV), we successfully resolve the artificially stabilized $a^-a^-a^-$ OOR pattern at the atomic scale, without structural relaxation to the ground state ($a^-b^+a^-$ pattern). This implies that STEM imaging with higher electron energy would cause greater perturbation of the system, possibly resulting in structural relaxation from the $a^-a^-a^-$ to the $a^-b^+a^-$ OOR pattern (Fig. 3f). Indeed, when imaged with a higher electron kinetic energy (200 keV), the atomic structure relaxes to that of the $a^-b^+a^-$ OOR pattern, identified via deep neural network analysis (Fig. 3g, h).

Importantly, this relaxation of the OOR pattern coincides with the disappearance of electric polarization (Fig. 3i). Furthermore, even after the OOR pattern is relaxed to $a^-b^+a^-$, CaTiO_3 still remains fully strained to the underlying LaAlO_3 substrate (Supplementary Fig. S16). This emphasizes that the epitaxial strain itself cannot stabilize the $a^-a^-a^-$ OOR pattern and resulting ferroelectricity in $\text{CaTiO}_3/\text{LaAlO}_3$ heterostructures, consistent with our DFT calculations (Supplementary Fig. S4). Thus, these results not only confirm a close correlation between the metastable $a^-a^-a^-$ OOR pattern and ferroelectricity, but also exclude the epitaxial strain as a primary origin for the ferroelectricity in CaTiO_3 (111) films.

Interest in understanding and utilizing metastable or hidden states, which would allow for exotic phenomena and functions, has been growing^{30–34}. While optical pumping has been mainly used to explore nonequilibrium transient states³³, we stabilize a nonequilibrium OOR pattern and then achieve robust ferroelectricity. Our approach to utilize metastable OOR patterns for functional perovskite oxides is distinct from conventional chemical substitution³⁵ or strain³⁶/dimensional²⁹ engineering. Moreover, our theory suggests that the metastable OOR pattern may facilitate the development of multifunctionalities (Supplementary Fig. S17): our results indicate that in the metastable $a^-a^-a^-$ OOR pattern, an increase in rotation angle could enhance the electric polarization, in stark contrast to the conventional $a^-b^+a^-$ pattern (which is competitive with ferroelectricity). Such cooperation between the OOR and polar distortion could constitute a generic principle for polarizing various material systems, including not only dielectrics but also conductors. Thus, OOR pattern engineering is expected to be widely used to design multifunctional perovskite oxides, in which the broken inversion symmetry is combined with electron conduction, magnetism, and topological phases.

Methods

Thin film growth. Commercially available LaAlO_3 single crystal substrates (Crystec GmbH, Germany) were used. Prior to the growth, LaAlO_3 (111) and (001) substrates were dipped in deionized water and sonicated for 2 h. Then, the substrates were annealed in the growth chamber in situ. The annealing temperature, background gas pressure, and annealing time were 1000 °C, $<1.0 \times 10^{-7}$ mTorr, and 1 h, respectively. Using this procedure for preparing substrates, we realized clean (111)-oriented heterointerfaces despite the high surface polarity (Fig. S9). We observed no structural defects or interfacial disorder over a large area (Fig. S9a, d)²⁰. The small-scale images (Fig. S9b, c, e, f) confirm that the interfacial atomic structure is abrupt and epitaxial.

CaTiO_3 and LaNiO_3 thin films were grown using PLD. For the growth of thin films, the substrate temperature and background oxygen partial pressure were kept at 600 °C and 10 mTorr, respectively. Polycrystalline $\text{Ca}_{1.1}\text{TiO}_{3.1}$ and LaNiO_3 targets were ablated with a KrF excimer laser (LPXpro, Coherent, USA). Off-stoichiometry of the cation in oxide dielectrics can produce defect dipoles and ferroelectricity²⁹, which are undesirable in this work. To exclude such extrinsic properties, we optimized the growth of cation-stoichiometric CaTiO_3 thin films. In the growth of CaTiO_3 thin films, the laser energy density played a critical role in determining film quality. Figure S7a–f shows the surface morphology and reflection high energy electron diffraction (RHEED) patterns of $\text{CaTiO}_3/\text{LaAlO}_3$ (001) thin films grown with the laser energy density of 0.5, 1.0, and 1.5 J cm⁻². We noticed that a smooth surface and spotty RHEED pattern are only achieved with an optimal laser energy density of 1.0 J cm⁻². When the value is too low, cracked surfaces can occur. On the other hand, when it is too high, rough surfaces and extra peaks in RHEED patterns have been observed. This feature is consistent with the off-stoichiometric CaTiO_3 thin film, reported previously^{37,38}. In addition, the CaTiO_3 thin film grown on a $(\text{LaAlO}_3)_{0.3}-(\text{Sr}_2\text{AlTaO}_6)_{0.7}$ (LSAT) (001) substrate with optimal laser energy density has the same *c*-axis lattice parameter as films grown by molecular beam epitaxy (Fig. S7g). We examined the possible oxygen vacancy formation in our optimal CaTiO_3 film by postannealing in oxygen. The postannealing temperature, background gas pressure, and annealing time were 500 °C, 760 Torr of pure oxygen, and 2 h, respectively. This postannealing process did not change the lattice parameter of our optimal CaTiO_3 , implying that the sample is already well-oxidized. Thus, our CaTiO_3 thin films grown with optimal laser energy density should be reasonably stoichiometric in terms of cation and oxygen. Throughout this work, we used the optimal laser energy density for growing CaTiO_3 thin films.

We fabricated $\text{CaTiO}_3/\text{LaAlO}_3$ (111) heterostructures using the same growth condition as for $\text{CaTiO}_3/\text{LaAlO}_3$ (001). The in situ RHEED intensity monitoring shown in Fig. S8a indicates layer-by-layer growth of CaTiO_3 on the LaAlO_3 (111) substrate. The grown films had smooth surfaces with step and terrace structures (Fig. S8b).

Characterization of thin films. XRD (AXS D8 with a Vantec line-detector, Bruker, USA) was used for structural analysis of thin films. All films were epitaxially grown on the LaAlO_3 (111) substrates and clear Kiessig fringes are seen (Fig. S8c). For ultrathin films with a thickness of several nanometers, we used Huber six-circle diffractometers at Sector 3A of the Pohang Light Source.

Switchable ferroelectric polarization was confirmed using scanning probe microscopy (Cypher, Asylum Research, UK) with conductive probes (PPP-EFM, Nanosensors). Dual AC resonance tracking PFM was used to read/write bipolar domain patterns and obtain d_{33} values as a function of the applied voltage. To exclude the contribution of electrostatic force to PFM signals, PFM was performed at higher-harmonic resonance frequency near 900 kHz.

Switching spectroscopy PFM measurements were also carried out on $\text{CaTiO}_3/\text{LaNiO}_3/\text{LaAlO}_3$ (001) films as well. Bias-dependent PFM phase and amplitude measurements show no hysteresis loop up to the maximum bias voltage of 10 V (Fig. 4e, f). We attempted to write bipolar domains as in the case of (111)-oriented CaTiO_3 (Fig. 4g, h). However, the phase difference between the two domains was small and the amplitude of the two domains was not equivalent; this is characteristic of electrostatic charge injection rather than ferroelectricity, which further corroborates the absence of ferroelectricity in (001)-oriented CaTiO_3 films.

Density-functional theory calculation. We performed first-principles DFT calculations within the local density approximation^{39,40} using the Vienna ab initio simulation package (VASP)^{41,42}. The projector augmented wave method⁴³ was used with an energy cut-off of 500 eV. The Brillouin zone was sampled with an $8 \times 8 \times 8$ *k*-point grid for the 5-atom unit cell of rhombohedral CaTiO_3 , and a $4 \times 4 \times 4$ *k*-point grid is used for a $2 \times 2 \times 2$ supercell with 40 atoms to accommodate the relevant octahedral rotations and polar distortions. Convergence was reached if the consecutive energy difference is less than 10^{-6} eV. The structural relaxation was conducted with a force threshold of 0.001 eV Å⁻¹. The polarization was calculated using the Berry-phase method⁴⁴ as implemented in VASP. The phonon dispersion was calculated using the density-functional perturbation theory implemented in the VASP and phonopy⁴⁵ with an increased energy cut-off (600 eV) and convergence threshold (10^{-8} eV).

Locally stable polar structures for each of ten rotation patterns are obtained by evaluating the phonon dispersion of a $2 \times 2 \times 2$ supercell (Fig. 1c). The ten rotation patterns were chosen based on reported rotation patterns of single-phase perovskite oxides⁵. The systematic search procedure to obtain locally stable polar structures is presented in Fig. S1.

With the $a^-a^-a^-$ OOR pattern, CaTiO_3 can either be polar $R3c$ or nonpolar $R\bar{3}c$ (Fig. S2). Based on the DFT calculation of LaAlO_3 , $Pnma$ - CaTiO_3 , $R\bar{3}c$ - CaTiO_3 , and $R3c$ - CaTiO_3 , we estimated the lattice mismatch between CaTiO_3 and LaAlO_3 . The results are summarized in Table S1. Overall, CaTiO_3 films are in small compressive strain on LaAlO_3 substrate.

We calculated phonon dispersion of CaTiO_3 with $R\bar{3}c$ and $R3c$ structures to check the ferroelectricity of CaTiO_3 in the given OOR pattern of $a^-a^-a^-$ (Fig. S3). $R\bar{3}c$ - CaTiO_3 has imaginary polar modes at the Γ point (Fig. S3a), so it must relax to other stable or locally stable structures. After following the flowchart in Fig. S1, $R\bar{3}c$ - CaTiO_3 was relaxed to the $R3c$ - CaTiO_3 rather than the ground state ($Pnma$ - CaTiO_3). The $R3c$ - CaTiO_3 did not show any unstable phonon modes (Fig. S3b). This local stability of $R3c$ - CaTiO_3 implies that stabilization of the $a^-a^-a^-$ OOR pattern can realize the ferroelectricity in CaTiO_3 .

To understand the role of epitaxial strain in the $\text{CaTiO}_3/\text{LaAlO}_3$ (111) heterostructures, we calculated the energy of $Pnma$ and $R3c$ structures under biaxial strain (Fig. S4a). Under compressive or tensile strain up to 2%, $Pnma$ always has lower energy than $R3c$. Furthermore, strain-dependent phonon dispersion calculations on the $Pnma$ structure indicated the robust stability of the $Pnma$ structure under biaxial strain (Fig. S4b–d). This excludes a significant role of the epitaxial strain in stabilizing $R3c$ - CaTiO_3 in $\text{CaTiO}_3/\text{LaAlO}_3$ (111) heterostructures. Instead, the surface symmetry of LaAlO_3 (111) substrates should play the dominant role in stabilizing $R3c$ - CaTiO_3 .

We investigated the relation between OOR and ferroelectricity in $R3c$ - CaTiO_3 . Here, the OOR angle is defined by the amount of rotation perpendicular to the (111)-axis (Fig. S17a). The calculated strain- and OOR angle-dependent polarization is plotted in Fig. S17b. Overall, the polarization increases with the OOR angle, implying a cooperative coupling between OOR and ferroelectricity in $R3c$ - CaTiO_3 ⁴⁶. The cooperative coupling was enhanced under compressive strain, which was our experimental condition.

To explain the suppressed electric polarization of CaTiO_3 in the $\text{CaTiO}_3/\text{LaAlO}_3$ (111) interfacial region (Fig. 3e), we carried out DFT calculation of realistic heterostructure composed of $R3c$ - CaTiO_3 and LaNiO_3 . In the case of $\text{CaTiO}_3/\text{LaAlO}_3$ interface, we found that electrons or holes are doped in CaTiO_3 depending on interfacial termination configurations⁴⁷, which make our calculation complicated. Replacing LaAlO_3 with LaNiO_3 does not dope any charge carriers into the CaTiO_3 and will not affect our arguments on interface dipole. Figure S6 shows

the DFT calculation of [(LaNiO₃)₁₂/(CaTiO₃)₁₂] superlattices with Ni/CaO₃ and LaO₃/Ti interface terminations. Independent of interface termination, interface dipoles are always pointing from CaTiO₃ to LaNiO₃. When intrinsic polarization of CaTiO₃ is pointing the opposite direction (11th or 12th layer in Fig. S6c, d), polarization is suppressed in the interfacial region and it is consistent with our observation.

Second harmonic generation experiment. The symmetry of CaTiO₃ thin films grown on (001) and (111) LaAlO₃ substrate was characterized by SHG. Figure S10 displays the experimental set-up for the SHG. The 800-nm femtosecond wave, with an 80-MHz repetition rate and 30-fs duration, was irradiated on the thin films with an incidence angle of 45° as a fundamental wave (Vitarra-T, Coherent). We focused the beam spot size into 1–30 μm. The polarization states of a fundamental and generated second harmonic wave were controlled to be p- or s-polarization by a half-wave plate and polarizer, respectively. To avoid the detection of the fundamental wave, we isolated the second harmonic wave using the short pass and bandpass filters. We monitored the intensity of the second harmonic response using a photomultiplier tube at the end of the optical path.

The allowed nonlinear susceptibility (χ) components of point group $3m$ are $\chi_{xxx} = -\chi_{yyy} = -\chi_{xyx} = -\chi_{yyx}$, $\chi_{xxz} = \chi_{zyz}$, $\chi_{xzz} = \chi_{yzy}$, and χ_{zzz} . We calculated and fitted the polarization-dependent SHG intensity from CaTiO₃ thin films, using the formulas below:

$$\begin{cases} I_{pp}(2\omega) = [\chi_{zyy} - \chi_{zyx} - \chi_{yyz} + \chi_{zzz}] + \chi_{xxx} \sin(3\varphi)]^2 \\ I_{sp}(2\omega) = 4[\chi_{zyy} - \chi_{xxx} \sin(3\varphi)]^2 \\ I_{ps}(2\omega) = [\chi_{xxx} \cos(3\varphi)]^2 \\ I_{ss}(2\omega) = 4[\chi_{xxx} \cos(3\varphi)]^2 \end{cases} \quad (1)$$

We carried out SHG experiments on 2.6 and 1.3 nm-thick CaTiO₃/LaAlO₃ (111) thin films (Figs. 2d and S11). In the case of 2.6 nm-thick films, the observed SHG was well fitted with a point group $3m$. On the other hand, negligible SHG was detected in the 1.3 nm-thick films. Considering that most ferroelectrics lose their ferroelectricity below a finite thickness, it is expected that CaTiO₃ grown on LaAlO₃ (111) has a critical thickness for ferroelectricity between 1.3 and 2.6 nm. The critical thickness confirms that our observation is from neither the CaTiO₃ surface nor the CaTiO₃/LaAlO₃ interface. In addition, the possibility of defect-induced ferroelectricity, which is enhanced with reduced film thickness²⁹, is also ruled out.

Scanning transmission electron microscopy. The CaTiO₃/LaAlO₃ (111) sample has a metastable $R3c$ phase with an a^-a^- OOR pattern which can be relaxed to a $Pnma$ phase with an $a^-b^+a^-$ OOR pattern; thus, we used mild sample preparation and STEM imaging conditions for the CaTiO₃/LaAlO₃ (111) sample. Cross-sectional specimens oriented along the [110] direction of both samples were prepared by conventional mechanical flat polishing with less than 10 μm thickness. Mechanically polished samples were further milled using a 3 keV Ar ion beam for CaTiO₃/LaAlO₃ (001) and 2 keV for CaTiO₃/LaAlO₃ (111) and using a 0.1 keV Ar ion beam for removing surface damage from both samples (PIPS II, Gatan, USA). ABF-STEM images for light elements, i.e., oxygen, were acquired using STEM (ARM 200F, JEOL, Japan) with a spherical aberration corrector (ASCOR, CEOS GmbH, Germany) at Materials Imaging & Analysis Center of POSTECH in South Korea. Additionally, to minimize the electron beam-induced phase transition of the metastable CaTiO₃/LaAlO₃ (111) sample, imaging was also conducted at an 80-kV accelerating voltage with a convergence angle of 27 mrad.

The standard position of each unit cell was determined from the Ti- or Al-atomic column, and the positive charge position was defined by the six-neighboring Ca- or La-atomic column (because the Ca-atomic column off-centering is larger than that for Ti). The negative charge positions are disregarded under the assumption that the O and Ca ions shift in the opposite direction, and displacement vectors from all unit cells were calculated from the standard position to the positive charge center. Polarization, P , can be simply calculated by the following equation, $P = \frac{1}{V} \sum_i \delta_i Z_i$, where V is the unit cell volume, and δ_i and Z_i are the displacement length and effective charge of atom i , respectively. Born effective charges for CaTiO₃ and LaAlO₃ are adopted to reflect electronic and ionic polarization^{48–50}. V ($= a^2c$) was calculated from a and c , which corresponds to the $\sqrt{2}$ [110] and [001] Ca–Ca (or La–La) spacing of perovskite structure, respectively.

Figure S12 shows the simulated ABF-STEM images of the 10 OOR patterns of CaTiO₃ considered in Fig. 1c. All ABF-STEM simulations were conducted with the multi-slice method using Dr. Probe software (Ernst Ruska-Centre, Germany)⁵¹, based on the atomic structures given by our DFT calculations. Figure S13 shows a comprehensive STEM data set of CaTiO₃/LaAlO₃ (111) and CaTiO₃/LaAlO₃ (001) heterostructures. Discussions on the CaTiO₃/LaAlO₃ (111) thin films are provided in the main text. For the CaTiO₃/LaAlO₃ (001) heterostructure, the bulk-like nonpolar $Pnma$ structure is clear. A high-quality hetero-interfacial structure is shown in Fig. S13i. Figure S13j shows the good agreement between the simulated ABF-STEM of $a^-b^+a^-$ and the structure of CaTiO₃. Note that both relaxed CaTiO₃/LaAlO₃ (111) (Fig. S13e) and CaTiO₃/LaAlO₃ (001) (Fig. S13i) have an

$a^-b^+a^-$ OOR pattern, but they are oriented along the [101] and [110] directions, respectively. Convolutional neural network (CNN; Fig. S13k) and polarization mapping (Fig. S13l) evidence the $Pnma$ structure of CaTiO₃ grown on an LaAlO₃ (001) substrate.

$R3c$ -CaTiO₃ films can exhibit domains, following the intrinsic twin domains of the underlying LaAlO₃ (111) single crystal substrate. We experimentally observed all four different domains of $R3c$ -CaTiO₃, which is numbered in Fig. S18a. For the domains #1 and #4, we can easily observe the polarization in STEM because the polarization is perpendicular to the [110] zone axis (Fig. S18b). For the domains #2 and #3, however, polarization vectors have [110]-components and we barely observe the polarization in STEM (Fig. S18b).

Given the threefold rotational symmetry of LaAlO₃ (111) substrate, there can be three equivalent domains of the relaxed $Pnma$ -CaTiO₃ on LaAlO₃ (111). We refer to the three domains as $a^-b^+a^-$, $a^+b^-b^-$, and $a^-a^-c^+$ domains, respectively, as shown in Fig. S19. Since only $a^-b^+a^-$ shows the characteristic zigzag-like pattern of oxygen, we mainly discussed the $a^-b^+a^-$ in the main text.

Deep neural network analysis. The obtained STEM images were filtered to reduce background noise and to extract each atomic column position with sub-pixel accuracy. Denoising autoencoder (DAE), a deep machine learning technique for reconstructing images, was applied to avoid the image distortion caused by a conventional Fourier transformation filter. Each STEM image was sliced into image patches containing a single atom, as training or input data for DAE. Atomic image patches were reconstructed (output) through unsupervised training. The DAE was trained to minimize the difference between the input noisy image and the output reconstructed image. After a sufficient training process, DAE was trained to reconstruct only the atomic image, and not to imitate the noise from the input image. Reconstructed image patches with sharp atomic coordinate information were assembled to construct a full STEM image.

CNN, as a deep learning image recognition technique, was exploited for OOR pattern mapping. General CNNs are mainly composed of convolutional layer (Conv. Layer), max pooling, and fully connected layer (F.C. Layer) (Fig. S20). A Conv. Layer consists of several filters extracting the features from the input image. The filters are matrices and the elements are continuously renewed to learn which feature to extract during the training process. On the contrary, max pooling does not change during training; it compresses the feature images from previous steps. For efficiency, image compression reduces computing power consumption, and for performance, it desensitizes decision making to the small variance of image position. F.C. Layer is composed of several neurons, which make a definitive prediction of OOR, based on the extracted features. Neurons in F.C. Layer are matrices and change via training, like the filters in Conv. Layer.

The main challenge in the application of CNN to STEM imaging is the insufficient quantity of unambiguous training data. For this reason, simulated data were used for the training set. To exclude ambiguity, ABF-STEM simulation was conducted on DFT calculated structures along [110] projections of the a^-a^- and $a^-b^+a^-$ patterns in CaTiO₃. For the purpose of emulating real experimental conditions and improving the training data, simulated images were preprocessed⁵² (Fig. S21). During the preprocessing steps, a 1×2 unit cell, which is the minimum criterion for OOR determination, was cropped to a random size in a random position, and then uniformly resized to 90×72 pixels, the input dimension for CNN. Resized images were convolved with probe sizes from 10 to 50 pm, which is the range between the ideal case (10 pm) and the technological limitation (50 pm). Lastly, artificial Gaussian noise was added with random values (between 40% and 60% of the data). These preprocessing steps reproduced 1350 images from a single simulation image.

For OOR identification through the information hidden by nontrivial noise, a custom deep neural network was devised (Fig. S22). This network possessed three Conv. Layers with 32, 64, and 64 filters (5×5 , 3×3 and 3×3 , respectively) that slide across the whole of each input image. Max pooling layers were connected to the second and the third Conv. Layers. CNN ended up with two F.C. Layers, which had 128 and 2 neurons each. The latter layer implies a binary classification of a^-a^- or $a^-b^+a^-$ regardless of the projection of each OOR pattern.

For OOR mapping of the experimental ABF-STEM image, 1×2 unit cell images were cropped into image patches that slide across the whole image. Each image patch was resized to 90×72 , which is the original input size of the custom CNN. Each patch returned its coordinates and OOR mapping result as a probability of each OOR pattern. Based on the coordinates, the patches were reintegrated with the color-mapped prediction result. The deep learning works and the calculations of atomic polarization were all performed based on Python. Also, Keras with TensorFlow backend was utilized as a deep learning library for training the model.

Data availability

All relevant data presented in this paper are available from the authors upon reasonable request. Source data are provided with this paper.

Received: 9 March 2020; Accepted: 10 September 2020;

Published online: 02 October 2020

References

- Glazer, A. M. The classification of tilted octahedra in perovskites. *Acta Crystallogr.* **B28**, 3384–3392 (1972).
- Torrance, J. B., Lacrore, P., Nazzari, A. L., Ansaldo, E. J. & Niedermayer, C. Systematic study of insulator-metal transitions in perovskites $RNiO_3$ ($R = Pr, Nd, Sm, Eu$) due to closing of charge-transfer gap. *Phys. Rev. B* **45**, 8209–8212 (1992).
- Hwang, H. Y., Cheong, S. W., Radaelli, P. G., Marezio, M. & Batlogg, B. Lattice effects on the magnetoresistance in doped $LaMnO_3$. *Phys. Rev. Lett.* **75**, 914–917 (1995).
- Benedek, N. A. & Fennie, C. J. Why are there so few perovskite ferroelectrics? *J. Phys. Chem. C* **117**, 13339–13349 (2013).
- Lufaso, M. W. & Woodward, P. M. Prediction of the crystal structures of perovskites using the software program SPUDS. *Acta Crystallogr.* **B57**, 725–738 (2001).
- Rondinelli, J. M., May, S. J. & Freeland, J. W. Control of octahedral connectivity in perovskite oxide heterostructures: an emerging route to multifunctional materials discovery. *MRS Bull.* **37**, 261–270 (2012).
- Wang, H. et al. Stabilization of highly polar $BiFeO_3$ -like structure: a new interface design route for enhanced ferroelectricity in artificial perovskite superlattices. *Phys. Rev. X* **6**, 011027 (2016).
- Liao, Z. et al. Controlled lateral anisotropy in correlated manganite heterostructures by interface-engineered oxygen octahedral coupling. *Nat. Mater.* **15**, 425–431 (2016).
- Shimakawa, Y. et al. Tuning magnetic anisotropy by interfacially engineering the oxygen coordination environment in a transition metal oxide. *Nat. Mater.* **15**, 432–437 (2016).
- Kim, T. H. et al. Polar metals by geometric design. *Nature* **533**, 68–72 (2016).
- Rajapitamahuni, A. et al. Giant enhancement of magnetic anisotropy in ultrathin manganite films via nanoscale 1D periodic depth modulation. *Phys. Rev. Lett.* **116**, 187201 (2016).
- Yashima, M. & Ali, R. Structural phase transition and octahedral tilting in the calcium titanate perovskite $CaTiO_3$. *Solid State Ion.* **180**, 120–126 (2009).
- Chandra, A., Ranjan, R., Singh, D. P., Khare, N. & Pandey, D. The effect of Pb^{2+} substitution on the quantum paraelectric behaviour of $CaTiO_3$. *J. Phys. Condens. Matter* **18**, 2977–2994 (2006).
- Cockayne, E. & Burton, B. P. Phonons and static dielectric constant in $CaTiO_3$ from first principles. *Phys. Rev. B* **62**, 3735–3743 (2000).
- Lemanov, V. V., Sotnikov, A. V., Smirnova, E. P., Weihnacht, M. & Kunze, R. Perovskite $CaTiO_3$ as an incipient ferroelectric. *Solid State Commun.* **110**, 611–614 (1999).
- Woodward, P. M. Octahedral tilting in perovskites. II. structure stabilizing forces. *Acta Crystallogr.* **B53**, 44–66 (1997).
- Bilc, D. I. et al. Hybrid exchange-correlation functional for accurate prediction of the electronic and structural properties of ferroelectric oxides. *Phys. Rev. B* **77**, 165107 (2008).
- Hatt, A. J. & Spaldin, N. A. Structural phases of strained $LaAlO_3$ driven by octahedral tilt instabilities. *Phys. Rev. B* **82**, 195402 (2010).
- Hanzawa, K., Sasase, M., Hiramatsu, H. & Hosono, H. Stabilization and heteroepitaxial growth of metastable tetragonal FeS thin films by pulsed laser deposition. *Supercond. Sci. Technol.* **32**, 054002 (2019).
- Blok, J. L., Wan, X., Koster, G., Blank, D. H. A. & Rijnders, G. Epitaxial oxide growth on polar (111) surfaces. *Appl. Phys. Lett.* **99**, 151917 (2011).
- Kim, J. R. et al. Experimental realization of atomically flat and AlO_2 -terminated $LaAlO_3$ (001) substrate surfaces. *Phys. Rev. Mater.* **3**, 023801 (2019).
- Junquera, J. & Ghosez, P. Critical thickness for ferroelectricity in perovskite ultrathin films. *Nature* **422**, 506–509 (2003).
- Ishikawa, R. et al. Direct imaging of hydrogen-atom columns in a crystal by annular bright-field electron microscopy. *Nat. Mater.* **10**, 278–281 (2011).
- He, Q. et al. Towards 3D mapping of BO_6 octahedron rotations at perovskite heterointerfaces, Unit Cell by Unit Cell. *ACS Nano* **9**, 8412–8419 (2015).
- Riverson, Y. et al. Deep learning microscopy. *Optica* **4**, 1437–1443 (2017).
- Ziatdinov, M. et al. Deep learning of atomically resolved scanning transmission electron microscopy images: chemical identification and tracking local transformations. *ACS Nano* **11**, 12742–12752 (2017).
- Yang, S. M. et al. Mixed electrochemical-ferroelectric states in nanoscale ferroelectrics. *Nat. Phys.* **13**, 812–818 (2017).
- Jang, H. W. et al. Ferroelectricity in strain-free $SrTiO_3$ thin films. *Phys. Rev. Lett.* **104**, 197601 (2010).
- Lee, D. et al. Emergence of room-temperature ferroelectricity at reduced dimensions. *Science* **349**, 1314–1317 (2015).
- Stoica, V. A. et al. Optical creation of a supercrystal with three-dimensional nanoscale periodicity. *Nat. Mater.* **18**, 377–383 (2019).
- Mankowsky, R. et al. Nonlinear lattice dynamics as a basis for enhanced superconductivity in $YBa_2Cu_3O_{6.5}$. *Nature* **516**, 71–73 (2014).
- Buzzi, M., Först, M., Mankowsky, R. & Cavalleri, A. Probing dynamics in quantum materials with femtosecond X-rays. *Nat. Rev. Mater.* **3**, 299–311 (2018).
- Li, X. et al. Terahertz field-induced ferroelectricity in quantum paraelectric $SrTiO_3$. *Science* **364**, 1079–1082 (2019).
- Lee, D. et al. Isostructural metal-insulator transition in VO_2 . *Science* **362**, 1037–1040 (2018).
- Mitsui, T. & Westphal, W. B. Dielectric and X-Ray studies of $Ca_xBa_{1-x}TiO_3$ and $Ca_xSr_{1-x}TiO_3$. *Phys. Rev.* **124**, 1354–1359 (1961).
- Haeni, J. H. et al. Room-temperature ferroelectricity in strained $SrTiO_3$. *Nature* **430**, 758–761 (2004).
- Roth, J., Arriaga, E., Brahlek, M., Lapano, J. & Engel-Herbert, R. Temperature-dependent growth window of $CaTiO_3$ films grown by hybrid molecular beam epitaxy. *J. Vac. Sci. Technol. A* **36**, 020601 (2018).
- Haislmaier, R. C. et al. Unleashing strain induced ferroelectricity in complex oxide thin films via precise stoichiometry control. *Adv. Funct. Mater.* **26**, 7271–7279 (2016).
- Ceperley, D. M. & Alder, B. J. Ground state of the electron gas by a stochastic method. *Phys. Rev. Lett.* **45**, 566–569 (1980).
- Perdew, J. P. & Zunger, A. Self-interaction correction to density-functional approximations for many-electron systems. *Phys. Rev. B* **23**, 5048–5079 (1981).
- Kresse, G. & Furthmüller, J. Efficient iterative schemes for ab initio total-energy calculations using a plane-wave basis set. *Phys. Rev. B* **54**, 11169–11186 (1996).
- Kresse, G. & Joubert, D. From ultrasoft pseudopotentials to the projector augmented-wave method. *Phys. Rev. B* **59**, 1758–1775 (1999).
- Blöchl, P. E. Projector augmented-wave method. *Phys. Rev. B* **50**, 17953–17979 (1994).
- King-Smith, R. D. & Vanderbilt, D. Theory of polarization of crystalline solids. *Phys. Rev. B* **47**, 1651–1654 (1993).
- Togo, A. & Tanaka, I. First principles phonon calculations in materials science. *Scr. Mater.* **108**, 1–5 (2015).
- Gu, T. et al. Cooperative couplings between octahedral rotations and ferroelectricity in perovskites and related materials. *Phys. Rev. Lett.* **120**, 197602 (2018).
- Chen, H., Kolkop, A. & Ismail-Beigi, S. First-principles study of electronic reconstructions of $LaAlO_3/SrTiO_3$ heterointerfaces and their variants. *Phys. Rev. B* **82**, 085430 (2010).
- Zhong, W., King-Smith, R. D. & Vanderbilt, D. Giant LO-TO splittings in perovskite ferroelectrics. *Phys. Rev. Lett.* **72**, 3618–3621 (1994).
- Behtash, M., Nazir, S., Wang, Y. & Yang, K. Polarization effects on the interfacial conductivity in $LaAlO_3/SrTiO_3$ heterostructures: a first-principles study. *Phys. Chem. Chem. Phys.* **18**, 6831–6838 (2016).
- Ghosez, P., Michenaud, J.-P. & Gonze, X. Dynamical atomic charges: the case of ABO_3 compounds. *Phys. Rev. B* **58**, 6224–6240 (1998).
- Barthel, J. Dr. Probe: a software for high-resolution STEM image simulation. *Ultramicroscopy* **193**, 1–11 (2018).
- Shorten, C. & Khoshgoftaar, T. M. A survey on image data augmentation for deep learning. *J. Big Data* **6**, 60 (2019).

Acknowledgements

This work was supported by IBS-R009-D1 and by the National Research Foundation of Korea (NRF) grant funded by the Korea government (MSIT) (Nos. 2018R1A5A6075964 and 2019R1C1C1002558). S.-Y.C. mainly acknowledges the support of the Global Frontier Hybrid Interface Materials of the National Research Foundation of Korea (NRF) funded by the Ministry of Science and ICT (2013M3A6B1078872). D.L. and S.-Y.C. acknowledge the support by POSTECH-Samsung Electronics Industry-Academia Cooperative Research Center. S.Y.P. acknowledges the support by the National Research Foundation of Korea (NRF) grant funded by the Korea government (MSIT) (No. 2020R1F1A1076742). Work at GIST is supported by the Basic Science Research Program through the National Research Foundation of Korea (NRF) funded by the Ministry of Science, ICT and Future Planning (Nos. 2015R1A5A1009962, 2018R1A2B2005331). K. M.R. acknowledges the support from Office of Naval Research grant N00014-17-1-2770. Experiments at 3A beamline of PLS-II were supported in part by MSICT.

Author contributions

D.L. conceived and designed the research. J.R.K. carried out thin film growth and structural characterization under the supervision of T.W.N., K.-J.G., J.J., and S.-Y.C. carried out atomic-scale imaging and deep learning analysis. S.Y.P., J.B., and K.M.R. carried out first-principles calculations. C.J.R. and J.S.L. carried out second harmonic generation experiments. J.K. and H.G.L. supported structural characterization. D.L. and J.R.K. wrote the paper with comments from all co-authors. D.L. directed the overall research.

Competing interests

The authors declare no competing interests.

Additional information

Supplementary information is available for this paper at <https://doi.org/10.1038/s41467-020-18741-w>.

Correspondence and requests for materials should be addressed to S.Y.P., S.-Y.C., T.W.N. or D.L.

Peer review information *Nature Communications* thanks Beatriz Noheda and the other, anonymous, reviewer(s) for their contribution to the peer review of this work. Peer reviewer reports are available.

Reprints and permission information is available at <http://www.nature.com/reprints>

Publisher's note Springer Nature remains neutral with regard to jurisdictional claims in published maps and institutional affiliations.



Open Access This article is licensed under a Creative Commons Attribution 4.0 International License, which permits use, sharing, adaptation, distribution and reproduction in any medium or format, as long as you give appropriate credit to the original author(s) and the source, provide a link to the Creative Commons license, and indicate if changes were made. The images or other third party material in this article are included in the article's Creative Commons license, unless indicated otherwise in a credit line to the material. If material is not included in the article's Creative Commons license and your intended use is not permitted by statutory regulation or exceeds the permitted use, you will need to obtain permission directly from the copyright holder. To view a copy of this license, visit <http://creativecommons.org/licenses/by/4.0/>.

© The Author(s) 2020