

ACSL4 serves as a novel prognostic biomarker correlated with immune infiltration in Cholangiocarcinoma

Shuochen Liu^{1,2,†}, Shilong Fan^{1,2,†}, Yirui Wang^{1,2,†}, Ruixiang Chen^{1,2,†}, Ziyi Wang^{1,2,3}, Yaodong Zhang^{1,2}, Wangjie Jiang^{1,2}, Yananlan Chen^{1,2}, Xiao Xu^{1,2}, Yue Yu^{1,2,*}, Changxian Li^{1,2,*}, Xiangcheng Li^{1,2,*}.

1 Hepatobiliary Center, The First Affiliated Hospital of Nanjing Medical University, Nanjing, China.

2 Key Laboratory of Liver Transplantation, Chinese Academy of Medical Sciences, Nanjing, China.

3 Department of Liver Surgery and Transplantation, Liver Cancer Institute and Zhongshan Hospital, Fudan University, Shanghai, China.

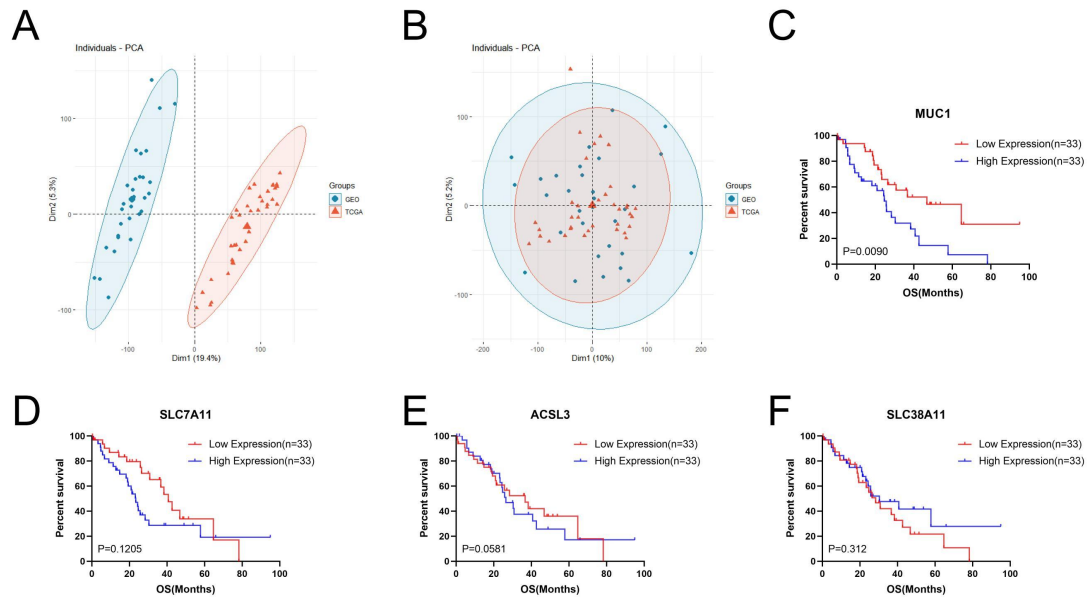
*Correspondence: Xiangcheng Li, drxcli@njmu.edu.cn ; Changxian Li, doclicx20@163.com; Yue Yu, yuyue@njmu.edu.cn.

† These authors contribute equally to this work.

Supplement Figure

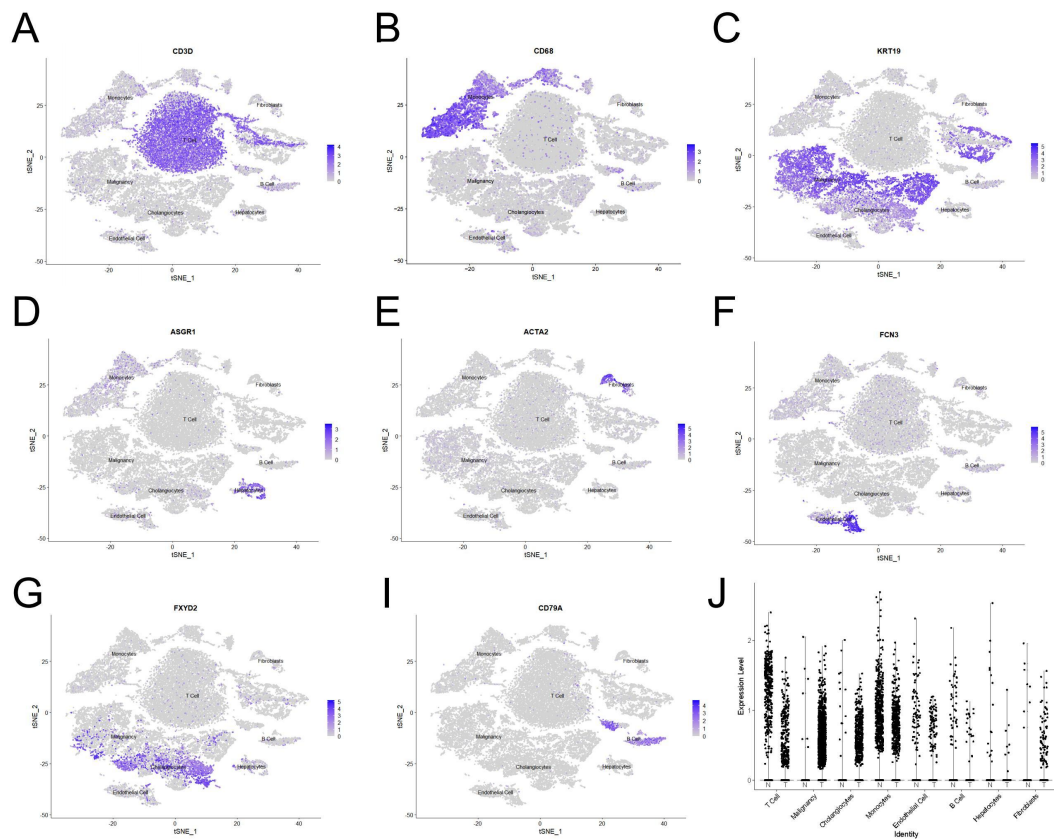
Supplement Figure 1 The relationship between 4 ferroptosis-related genes and overall survival in CHOL.

(A) The PCA analysis of TCGA-CHOL and GSE107943 datasets before removing batch effects. (B) The PCA analysis of TCGA-CHOL and GSE107943 datasets after removing batch effects. (C-F) OS in high and low MUC1, SLC7A11, ACSL3, SLC38A1 group in meta cohort.



Supplement Figure 2 Cellular identity in GSE138709

(A-I) The expression of canonical marker genes for ten distinct cell types is shown in tSNE plots. T cells (CD3D), malignancy (KRT19), cholangiocytes (FXD2), monocytes (CD14), hepatocytes (ASGR1), endothelial cells (FCN3), fibroblasts (ACTA2), and B cells (CD79A). (J) The expression of ACSL4 in different types of cells in CHOL compared with normal samples.



Supplement Figure 3 ACSL4 acts as a crucial factor of ferroptosis in CHOL
(A-B) Knockdown of ACSL4 alleviated erastin-induced cell death in RBE and HuCCT1. **(C-F)** ROS and Fe^{2+} were assayed in RBE and HuCCT1 following treatment with **erastin (20 μM)** for 24 h.

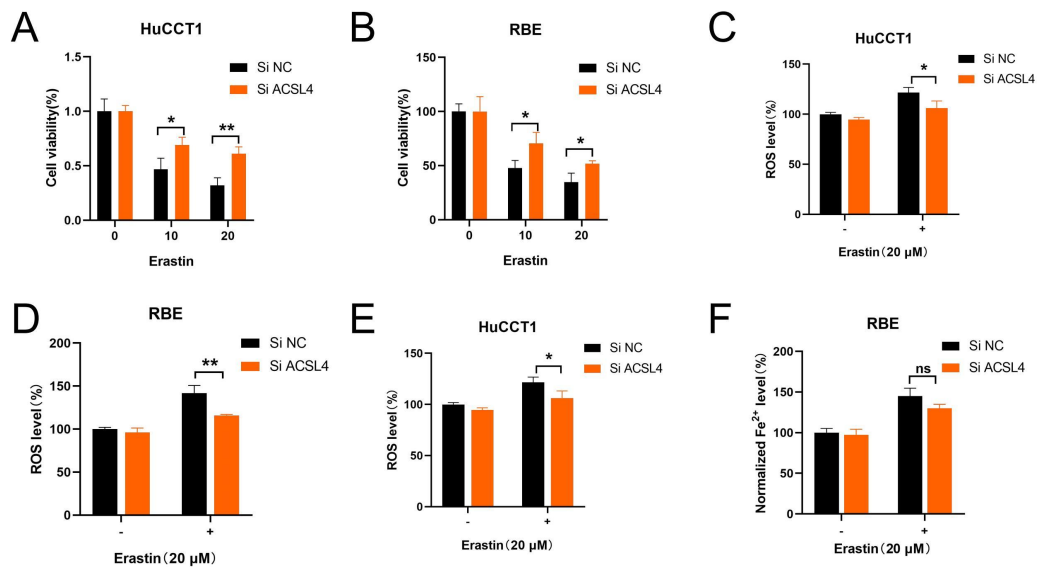


Figure 1E

ACSL4

T N T N T N T N T N T N

ACSL4 79kb

70kb



The other exposure image

T N T N T N T N T N T N

ACSL4 79kb

70kb



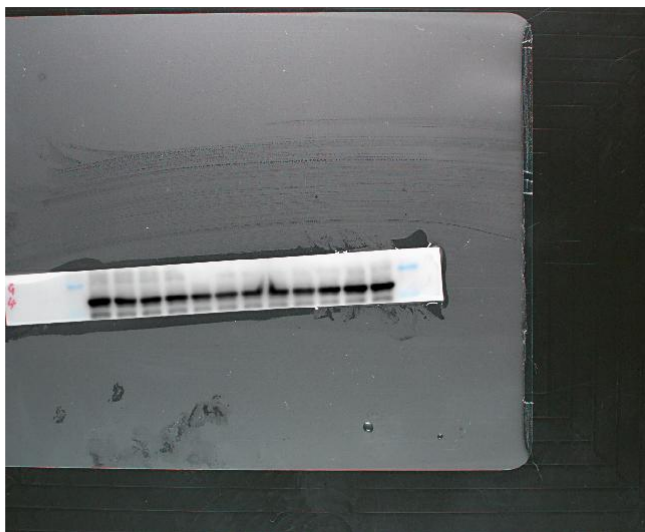
GAPDH

T N T N T N T N T N T N

GAPDH 36kb

40kb

35kb



The other exposure image

T N T N T N T N T N T N

GAPDH 36kb

40kb

35kb

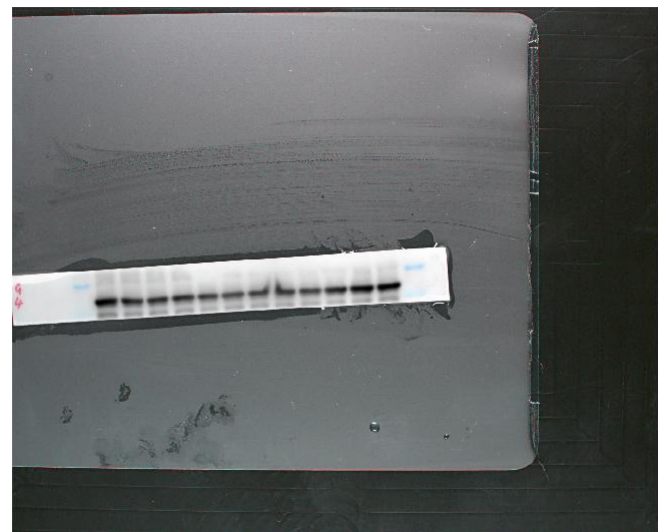
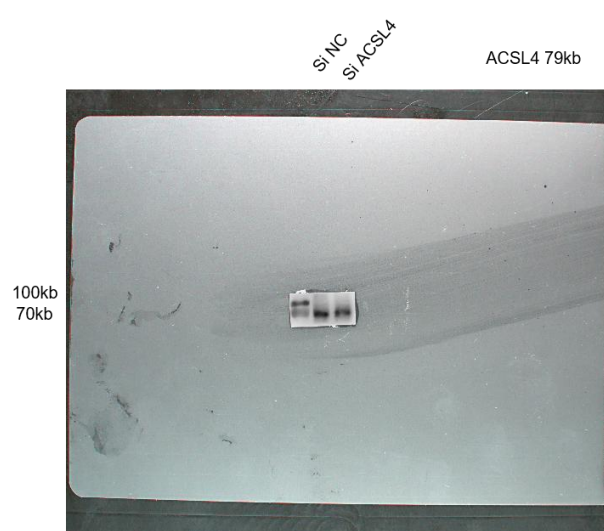
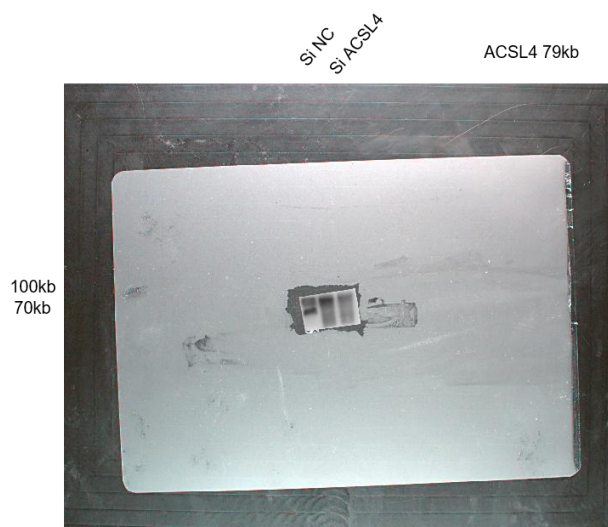


Figure 7E

HuCCT1

RBE



HuCCT1

RBE

