

Research Article

Combined Transplantation of Adipose Tissue-Derived Stem Cells and Endothelial Progenitor Cells Improve Diabetic Erectile Dysfunction in a Rat Model

Qiyun Yang,¹ Wanmei Chen,² Chi Zhang,¹ Yun Xie,¹ Yong Gao,³ Cuncan Deng,¹ Xiangzhou Sun ¹, Guihua Liu ⁴, and Chunhua Deng ¹

¹Department of Urology, The First Affiliated Hospital of Sun Yat-sen University, Guangzhou 510080, China

²Department of Anesthesiology, The First Affiliated Hospital of Sun Yat-sen University, Guangzhou 510080, China

³Reproductive Medicine Center, The Key Laboratory for Reproductive Medicine of Guangdong Province, The First Affiliated Hospital of Sun Yat-sen University, Guangzhou 510080, China

⁴Reproductive Medicine Research Center, The Sixth Affiliated Hospital of Sun Yat-sen University, Guangzhou 510655, China

Correspondence should be addressed to Xiangzhou Sun; sunxzh08@qq.com, Guihua Liu; liuguihua@mail.sysu.edu.cn, and Chunhua Deng; dch0313@163.com

Received 17 November 2019; Revised 31 January 2020; Accepted 25 February 2020; Published 3 July 2020

Academic Editor: Sarnowska Anna

Copyright © 2020 Qiyun Yang et al. This is an open access article distributed under the Creative Commons Attribution License, which permits unrestricted use, distribution, and reproduction in any medium, provided the original work is properly cited.

Erectile dysfunction (ED) is a common complication in men suffered with diabetic mellitus. Stem cell transplantation is a promising strategy for the treatment of diabetic ED (DED). In this study, we evaluated whether combined transplantation of adipose tissue-derived stem cells (ADSCs) and endothelial progenitor cells (EPCs) could improve the erectile function of the DED rat model. DED rats were induced via intraperitoneal injection of streptozotocin (50 mg/kg), and ED was screened by apomorphine (100 mg/kg). DED rats were divided into 4 groups ($n = 14$ each): DED, ADSC, EPC, and ADSC/EPC group. Another 14 age-matched male SD rats with normal erectile function were served as the normal group. The normal group and the DED group were received intracavernous injection with phosphate-buffered saline (PBS). And the other groups were received intracavernous injection with ADSCs (1×10^6), EPCs (1×10^6), and ADSCs/EPCs ($0.5 \times 10^6/0.5 \times 10^6$), respectively. The total intracavernous pressure (ICP) and mean arterial pressure (MAP) were recorded at day 28 after injection. The endothelium, smooth muscle, and penile dorsal nerves were assessed within cavernous tissue. On day 28 after injection, the ADSC/EPC group displayed more significantly enhanced ICP and ICP/MAP than the DED or ADSC or EPC group ($p < 0.05$). Immunofluorescent analysis and western blot demonstrated that the improvement of erectile function in the ADSC/EPC5 group was associated with increased expression of endothelial marker (CD31) and the correction of eNOS-cGMP-NO signaling. More 5-ethynyl-2'-deoxyuridine (EdU-) positive EPCs could be found lining in the cavernous endothelial layer in the ADSC/EPC group than the EPC group, which was attributed to the paracrine of vascular endothelial growth factor (VEGF) and stromal-derived factor-1 (SDF-1) by ADSCs. Combined transplantation of ADSCs and EPCs has a synergic effect in repairing the endothelial function of DED rats, and the underlying mechanism might be the paracrine of VEGF and SDF-1 by ADSCs, which improves the recruitment and proliferation of EPCs in the cavernosum.

1. Introduction

Erectile dysfunction (ED), which is defined as an inability to obtain and/or sustain sufficient penile erection to achieve satisfactory sexual intercourse, is a common and depressing complication in men suffered with diabetes mellitus [1]. It

is reported that about 35%~90% of diabetic men suffering from ED, which is 3 times higher than the healthy men [2]. Although phosphodiesterase type 5 inhibitors (PDE-5Is) are the first-line treatment for ED nowadays, the response rate in the diabetic ED patients is low [3], mainly because of the severe damaged of cavernousum endothelial function,

then subsequently decreasing of smooth muscle content and neuropathy [4]. It is therefore urgent to explore novel strategies for the regeneration of cavernosum, both morphologically and functionally.

Stem cells (SCs) are now considered one of the promising strategies for diabetic mellitus erectile dysfunction (DED) [5]. So far, various stem cells, e.g., mesenchymal stem cells (MSCs) [6], adipose tissue-derived stem cells (ADSCs) [7, 8], and urine-derived stem cells (USCs) [9] have been proven to be effective in the treatment of DED. Among them, ADSCs, which can be obtained by the minimal invasive method and be easily expanded, are thought to be an ideal candidate for the treatment of DED. And the paracrine effect is considered to be the major mechanism for ADSCs in the therapeutic effect of DMED. In our previous study, ADSCs genetically modified with VEGF-165 displayed a greater therapeutic effect in improving erectile function of DED rats than unmodified ADSCs [8]. However, taking into account the risk of the exogenous gene integrating into host genome, transgenic technology is still restricted in clinical application.

Endothelial progenitor cells (EPCs), especially the late-out growth EPCs, which can give rise to mature endothelial cells (ECs) *in vitro* and *in vivo*, are critically important in the regeneration of the injured vessel *in vivo* [10, 11]. Several preclinical studies have demonstrated the significant improvement of endothelial function by EPC transplantation in the hind limb ischemic [12] and coronary ischemia animal model [13]. Studies have suggested that the number of EPCs in DM patients is lower compared to healthy men, and EPC functions were also considerably impaired by DM [14]. The proliferation and differentiation of late-out growth EPCs need various proangiogenic factors, such as VEGF, angiongenin, and angionpioetin I, but these EPCs can barely secrete these factors themselves [15]. Moreover, research also indicated that the expression of VEGF and its receptor decreased within the cavernous tissue of DED rats [8]. Gao et al. found that transplanting EPCs genetically modified with VEGF-165 can partially restore the erection function of DED rats [16].

Recent studies indicated that combined transplantation of MSCs and EPCs could enhance the bone generation and cardiac repaired after myocardial injury [17, 18]. Therefore, we first hypothesize that the paracrine effect of ADSCs can enhance proliferation and differentiation of EPCs; thus, combined transplantation of these cells can display a synergistic effect on improving erectile function and restoring the cavernous structure in DED. In the present study, we will investigate the efficacy of combined transplantation of ADSCs and EPCs in the treatment of a diabetic ED rodent model and the underlying mechanisms.

2. Materials and Methods

2.1. Ethics Statement. Four 2-week-old male Sprague-Dawley (SD) rats (60 g–80 g) and seventy-five 8-week-old male SD rats (280 g–320 g) were purchased from the Animal Center of Sun Yat-sen University (Guangzhou, China) and kept under a standard laboratory condition. The whole procedures were approved by the Sun Yat-sen University Health Sciences Institutional Review Board.

2.2. Isolation and Cultivation of EPCs. Rat EPCs were isolated and cultured according to the previously described, with minor modifications [19]. Briefly, after collecting the mononuclear cells from the tibia and femoral bone marrow of 2-week-old rats, cells were diluted with phosphate-buffered saline (PBS), placed onto Ficoll-Paque Plus (GE Healthcare Bio-Sciences, Pennsylvania, USA), and centrifuged at 18°C at 400 g for 30 min. Then, collecting the Buffy coat mononuclear cells and washed twice with PBS. After that, the cells were resuspended with the EGM-2 Bullet Kit system (Lonza, Basel, Switzerland), which consists of endothelial basal medium, 10% fetal bovine serum, hEGF, hFGF-B, VEGF, IGF-1, heparin, and ascorbic acid. Cells were plated on fibronectin (Millipore, Billerica, MA, USA) coated onto tissue culture plastic. 24 hours after the initial plating, the medium was exchanged to remove the nonadherent cells and was exchanged every day for the first week. Colonies of EPCs appeared 7–10 days after the initial isolation, when the cells grew to 80% confluence and were serially passaged onto fibronectin-coated surfaces. EPCs were used at passages 4 for all *in vitro* and *in vivo* experiments.

2.3. Isolation and Cultivation of ADSCs. The isolation and culture procedures were followed according to our previously described [20]. Briefly, after collecting from the 2-week-old SD rats, the adipose tissue was incubated in 0.1% collagenase Type I A (Sigma-Aldrich, St. Louis, MO, USA) for 45 minutes at 37°C and shaken 30 seconds at every 15 minutes. After filtration with 100 µm cell strainer and centrifugation, the adipose tissue stromal-vascular fraction (SVF) was immersed in ACK Lysis Buffer for 10 minutes at room temperature. After centrifugation and rinsing with PBS twice, the remaining cells were resuspended in Dulbecco's modified Eagle's medium/F12 media (DMEM/F12, Hyclone, Thermo Scientific, CA, USA) with 10% fetal bovine serum (FBS, Gibco, Life Technologies, USA) and cultured in 25 cm² cell culture flask. The medium was exchanged every other day, and cells were passaged at approximately 80% confluence.

2.4. In Vitro Studies

2.4.1. Flow Cytometry Analysis of ADSCs and EPCs. Cell surface antigens of ADSCs (passage 3) or EPCs (passage 3) were determined by flow cytometry analysis. After trypsinized and washed, 5×10^5 ADSCs or EPCs were resuspended in flow cytometry buffer. ADSCs were incubated with fluorescence-conjugated antibodies (CD73, CD90, and CD105), and EPCs were incubated with antibodies (CD 31, CD34, CD45, CD73, CD90, CD105, CD117, and CD133) (BD Biosciences, Franklin Lakes, NJ, USA) on ice for 30 min, respectively. Cell aliquots were then rinsed twice with PBS and detected by flow cytometry (FACS Calibur, BD Biosciences, NJ, USA), and the data were analyzed with FlowJo vX software (Tree Star, Ashland, OR).

At passage 3, EPCs were fixed for the endothelium-specific markers (CD31, vWF, and KDR) (Sigma-Aldrich, St. Louis, MO, USA) immunofluorescence staining. And human umbilical vein endothelial cells (HUVECs, passage 3) were served as positive control.

2.4.2. VEGF and SDF-1 Level in the Conditioned Medium of ADSCs In Vitro. VEGF and SDF-1 levels in the conditioned medium of ADSCs in vitro were measured using the VEGF ELLISA kit (RRV00, R&D Systems, Minnesota, US) and the SDF-1 ELLISA kit (R&D Systems) according to the manufacturer's protocol.

2.4.3. In Vitro Tube Formation of EPCs, ADSCs, and ADSCs/EPCs. Matrigel (50 μ L per well; BD Biosciences, USA) was first added to 96-well plates and then incubated at 37°C for 1 h. 5×10^3 EPCs, 1×10^4 EPCs, 1×10^4 ADSCs, or $5 \times 10^3/5 \times 10^3$ ADSCs/EPCs were plated separately in 50 μ L of DMEM and cultured at 37°C with 5% CO₂ for 2 h; then, the tubes formed of Matrigel were counted under a phase contrast microscopy (Nikon, Japan). The EPC/VEGF group contained 5×10^3 EPCs and 50 ng/ml VEGF in DMEM.

2.4.4. Coculture Assay. Coculture assay was taken in a transwell chamber apparatus with a polycarbonate membrane, according to the manufacturer's instructions. Briefly, the EPC suspension (2×10^6 cells/ml) in EBM-2 was added to the upper compartment of the chamber, whereas ADSCs in DMEM/F-12 containing 10% FBS or the medium alone was loaded in the lower compartment of the chamber. The coculture system was maintained in a humidified atmosphere containing 5% CO₂ and 95% air at 37°C. The medium was exchanged every other day. After 14-day incubation, the effect of ADSCs on EPC viability was detected by 3-(4, 5-dimethylthiazol-2-yl)-2,5-diphenyltetrazoliumbromide (MTT) assay in the coculture system on days 1, 7, and 14. EPCs were supplemented with 10 μ L MTT (Beyotime Institute of Biotechnology, Haimen, China) and incubated for 4 h. After discarding the supernatant by aspiration, 200 μ L dimethyl sulfoxide (DMSO) was added to solubilize the purple formazan for 30 min. Then, the OD value was measured with a spectrometer at 490 nm.

2.5. In Vivo Studies

2.5.1. Establishment of a Diabetic Erectile Dysfunction Rat Model and In Vivo Transplantation. The diabetic erectile dysfunction (DED) rat model was induced by streptozotocin (STZ) according to the methods established in our previous studies. Briefly, all rats received one dose of STZ (50 mg/kg) (Sigma, St. Louis, Missouri) via intraperitoneal injection after acclimatization for one week. 2 days after STZ injection, blood samples were obtained from tail prick for random blood glucose measurement with a blood glucose meter (Roche, Mannheim, Germany). Those rats which blood glucose level higher than 300 mg/dl were selected as diabetic rats. Twelve weeks after STZ injection, apomorphine (APO, 100 μ g/kg) (Sigma) was used to identify the ED rats according to Heaton's method [21]. After the APO subcutaneous injection, 56/65 (86.15%) rats were screened as DED rats.

After the rats were anesthetized with pentobarbital sodium (40 mg/kg) via IP, a total of 1×10^6 ADSCs or EPCs or $5 \times 10^5/5 \times 10^5$ ADSCs/EPCs suspended in 200 μ L PBS or 200 μ L PBS alone was injected into the corpus cavernosum

at the middle level. EPCs were incubated with EdU (Invitrogen, Carlsbad, CA, USA) for 48 h before transplantation. An elastic band was fixed at the base of the penis before the injection of cells and was maintained for 2 min after the cell injection.

DED rats were randomly divided into 4 groups (n = 14 each): ADSC group rats received an intracavernous injection of ADSCs (1×10^6 cells); the EPC group received an injection of EPCs (1×10^6 cells); the ADSC/EPC group received an injection of ADSCs/EPCs ($5 \times 10^5/5 \times 10^5$ cells); and the DED group received an injection of 200 μ L PBS as a negative control. Furthermore, a normal group consisted of 14 age-matched normal rats were served as a positive control.

2.5.2. Erectile Function Evaluation. Erectile function was determined by total intracavernosal pressure (ICP) and mean arterial pressure (MAP) at the 4th week after intracavernous injection as previously described. Briefly, rats were first anesthetized with pentobarbital sodium (40 mg/kg, IP). Then, a PE-50 tube filled with heparinized saline (250 IU/ml) was then cannulated into the isolated left carotid artery to monitor the MAP. For the ICP recording, a 25G needle was inserted into the left penile crus and then connected to another pressure transducer. When the cavernous nerve (CN) was identified and isolated, a bipolar hook electrode connected to a signal generator (Taimeng, Chengdu, P.R. China) was placed to the left CN for electrical stimulation with monophasic rectangular pulses. The stimulus parameter settings were 5 v, 20 Hz, 0.2 ms width, and duration of 60 s. The pressure was recorded and analyzed with the BL New-Century 2.1 software (Taimeng). To normalize for variations in systemic blood pressure, the erectile function was presented as the ratio of ICP/MAP. Total ICP was measured by the area under the ICP curve according to the method described in the literature. Then, rats were sacrificed with over dose pentobarbital sodium via IP, and the penis was harvested for histological analysis and western blotting.

2.5.3. Histological and Immunohistological Analysis. For Masson's trichrome staining, the prepared paraffin sections were prepared according to our previous published study. Then sections were processed according to the standard protocol of Masson's trichrome staining. Quantitative image analysis was analyzed by the Image-Pro Plus 6.0 software (Media Cybernetics, Bethesda, MD, USA).

For immunofluorescence, frozen penile tissue sections were incubated with primary antibodies to CD31 (Abcam, Cambridge, UK), nNOS (Abcam), or β -Tubulin (Cell Signaling Technology, MA, USA) overnight at 4°C, while the control sections were incubated without the primary antibodies. After washing with PBS three times, the sections were incubated with the Alexa-594 or Alexa-488 (goat anti-mouse or goat anti-rabbit, Invitrogen, Carlsbad, CA, USA) at a 1:200 dilution for 1 hour at room temperature protecting from light. Then, the sections which had been incubated with CD31 were incubated with freshly configured Click-iT reaction cocktail containing Alexa-488 for 30 min at room temperature without light. Then 4',6-diamidino-2-phenylindole (DAPI; Invitrogen, Carlsbad, CA, USA) staining was

applied for the visualization of cell nuclei. The sections were recorded and photographed with a Leica microscope and analyzed by the Image-Pro Plus 6.0 software.

2.5.4. Western Blotting Analysis. Proteins were extracted from the penis, and concentrations were analyzed by the BCA Protein Assay kit (Beyotime Institute of Biotechnology). Then, equal amounts of proteins were loaded on a sodium dodecyl sulfate polyacrylamide gel for electrophoresis. After transferring the proteins to nitrocellulose membranes, primary antibodies were incubated overnight at 4°C. GAPDH (Proteintech, Rosemont, IL, USA) was used as loading control. Signals were obtained with the Odyssey infrared imaging system. The primary antibodies included CD31 (Abcam, Cambridge, UK), eNOS (Abcam), VEGF (Cell Signaling Technology), and SDF-1 (Santa Cruz Biotechnology, CA, USA).

2.5.5. NO Level and cGMP (Cyclic Guanosine Monophosphate) Level Assay. NO level and cGMP level in the cavernous tissue in each group were measured using a Nitric Oxide Colorimetric Assay Kit (K262, Biovision, San Francisco, US) and a cGMP direct immunoassay kit (K372, BioVision) according to the manufacturer's protocol.

2.6. Statistical Analysis. Comparisons between groups were analyzed using the GraphPad Prism v.7.0 software (GraphPad Software, La Jolla, CA, USA). Continuous variables were expressed as the mean \pm SD. Multiple groups were compared using one-way ANOVA followed by the Student-Newman-Keuls post hoc test. $P < 0.05$ was considered statistically significant.

3. Result

3.1. Characterization of Cultured ADSCs and EPCs. The adherent cultured rat ADSCs exhibited fibroblast-like morphology under an inverted phase contrast microscope. And the flow cytometry analysis demonstrated that these ADSCs were strongly positive for the MSC markers CD73, CD90, and CD105, as our previous study shown²⁰ (Figures 1(a) and 1(b)). The ELISA assay showed that ADSCs could secrete a large amount of VEGF and SDF-1, which have been proved to be important to the proliferation and differentiation of EPCs (Figure 1(c)).

The rat EPC colonies appeared 2 weeks after plating. These cells exhibited the typical cobblestone-shaped appearance (Figure 1(d)). The flow cytometry analysis demonstrated that these EPCs were positive for CD31, CD73, CD105, and CD133 (Figure 1(e)). Immunofluorescence staining confirmed that the cultured EPCs could express the HUVEC surface marker CD31, vWF, and KDR (Figure 1(f)).

3.2. ADSCs Enhance the Proliferation and Angiogenesis of EPCs In Vitro. Cultured in the transwell for 14 days, the number of EPCs co-cultured with ADSCs was significantly higher than that of EPCs cultured alone via the MTT assay ($p < 0.05$) (Figure 2(a)). More tubes were formed on Matrigel by $5 \times 10^3/5 \times 10^3$ ADSCs/EPCs, 1×10^4 EPCs, and 5×10^3

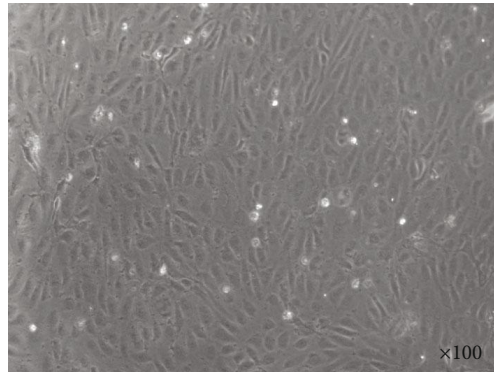
EPCs plus 50 ng/ml VEGF, than 5×10^3 EPCs ($p < 0.05$), while there was no significant difference among those three groups ($p > 0.05$) (Figure 2(b)).

3.3. Blood Glucose Concentration and Body Weight Do Not Change in the DED Rats after Cell Transplantation. After STZ intraperitoneal injection, blood glucose concentration was significantly increased and the body weight was significantly declined in the diabetic rats compared to the age-matched normal control rats ($p < 0.05$). 28 days after cell transplantation, the blood glucose level and body weight were not significantly change in the DED rats. Moreover, there were no DED rats died in this study (Table 1).

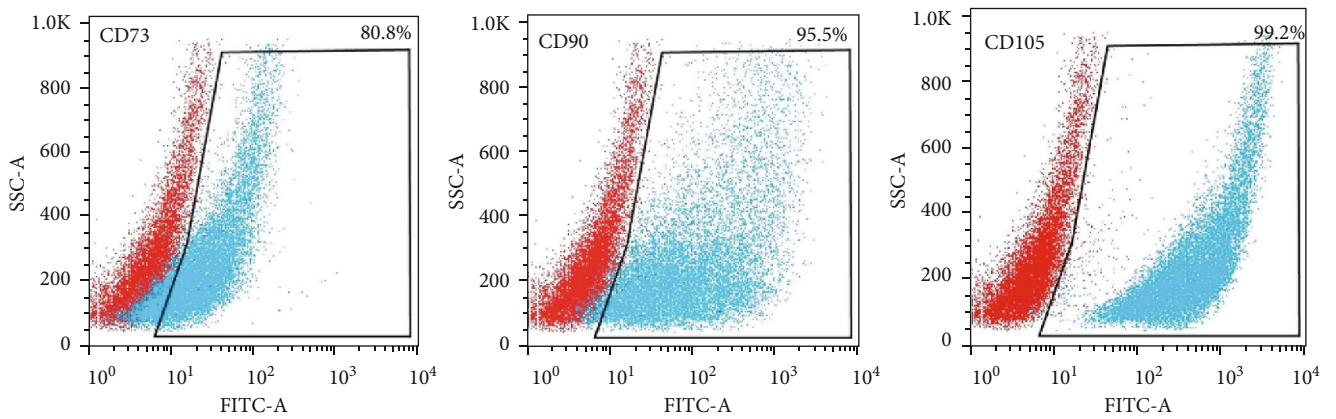
3.4. Combined Transplantation of EPCs and ADSCs Better Restores Erectile Function in the DED Rats. Only one rat in the EPC group died on day 22 after cell transplantation, and it was excluded in this study. Eight weeks after STZ injection, the ICP and ICP/MAP ratios were significantly decreased in the DED rats compared to the normal control rats ($p < 0.01$), indicating the impairment of erectile function in the DED rats. The ADSC group and the EPC group both showed greatly increased ICP and ICP/MAP ratios compared to the DED group but were still significantly lower than the normal control group ($p < 0.05$), demonstrating that ADSCs and EPCs both could partially restore the erectile function of DED rats. Meanwhile, ADSC/EPC cotransplantation displayed a greatly protective effect of erectile function. The total ICP and the ICP/MAP ratios of the ADSC/EPC group were 95 ± 9 mmHg and $69 \pm 15\%$, respectively, which were higher than the values in the EPC group and the ADSC group and represented 86% and 90% of the values in the normal control group (Figures 3(a)-3(c)).

3.5. Combined Transplantation of ADSCs and EPCs Better Increases Cavernous Endothelial Function in the DED Rats. The endothelial marker CD31 expression level in the cavernous tissue 28 days after cell transplantation was determined by immunofluorescence staining and western blot (Figures 4(a), 4(c), and 4(d)). The result revealed that CD31 were significantly decreased in the DED rats compared to the normal control rats ($p < 0.01$), while combined transplantation of ADSCs and EPCs could almost completely restore the endothelial content in the cavernous tissue ($p < 0.05$). Meanwhile, ADSCs or EPCs could also partially recover the endothelial content, and there were no significant differences between these two groups ($p > 0.05$). Figure 4(a) shows that more EdU-positive cells were found in the endothelial layer in the ADSC/EPC group than in the EPC group, though the number of transplanted EPCs in the ADSC/EPC group was just half of the EPC group, which implied that ADSCs could enhance the proliferation and differentiation of EPCs in vivo. Additionally, western blot confirmed that there were more CD31 expressed in the ADSC/EPC group than that in the EPC or ADSC group.

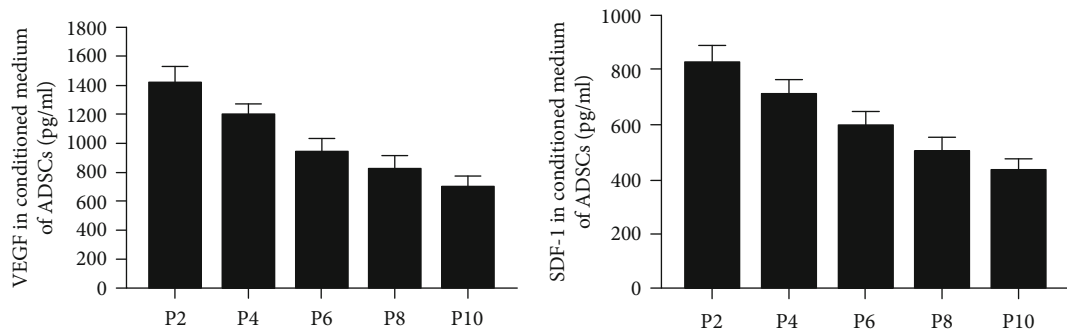
eNOS-NO-cCMP signaling was extremely important to endothelial function. Western blot showed a large decreased in eNOS expression in cavernous tissue of DED rats (Figures 4(b)-4(d)). In addition, NO concentration in serum



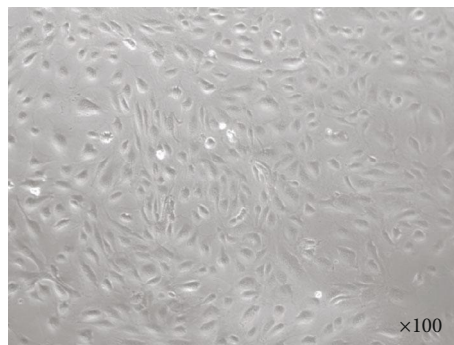
(a)



(b)



(c)



(d)

FIGURE 1: Continued.

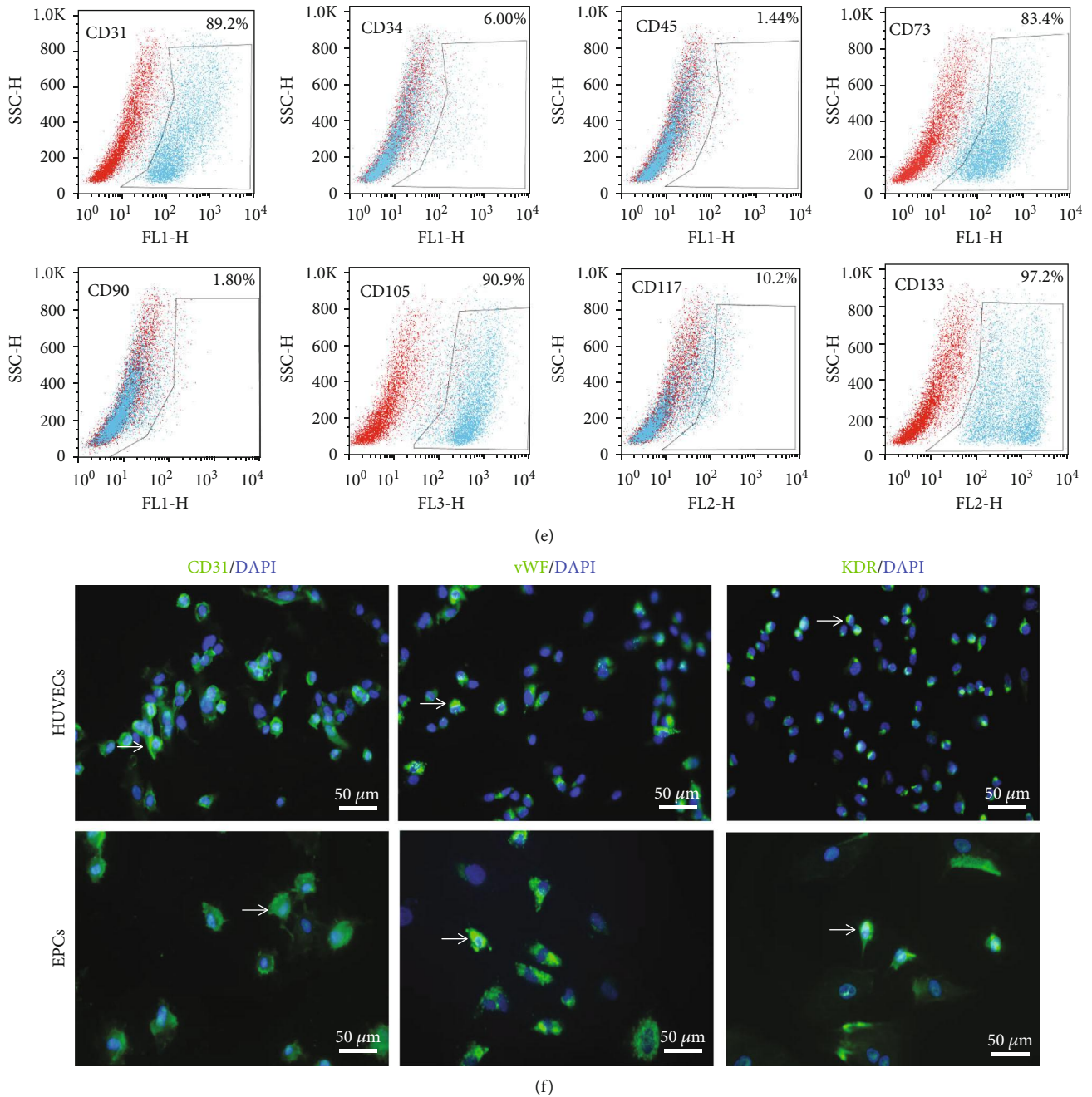


FIGURE 1: Characterization of cultured ADSCs and EPCs. (a) The adherent cultured rat ADSCs exhibited fibroblast-like morphology ($\times 100$) (b) Flow cytometry analysis demonstrated these ADSCs was strongly positive for CD73, CD90, and CD105. (c) The ELISA assay showed that ADSCs could secrete a large amount of VEGF and SDF-1 in vitro. (d) The cultured EPCs exhibited the typical cobblestone-shaped appearance ($\times 100$). (e) Flow cytometry analysis demonstrated these EPCs were strongly positive for CD31, CD73, CD105, and CD133. (f) Immunofluorescence staining confirmed that EPCs were positive for EC markers CD31, vWF, and KDR. Scale bars: 50 μm . VEGF: vascular endothelial growth factor; SDF-1: stromal cell-derived factor-1; vWF: von Willebrand Factor; KDR: kinase insert domain receptor.

and cGMP concentration in cavernous tissue of DED rats were also significantly lower than those in the normal rats. Expression level of eNOS, NO concentration, and cGMP concentration significantly increased 28 days after cell transplantation in the ADSC/EPC group than in ADSC, EPC, and DED group ($p < 0.05$), indicating that combined transplantation of ADSCs and EPCs could effectively restore

the impaired eNOS-NO-cGMP signaling in DED rats (Figures 4(e) and 4(f)).

3.6. Transplanted ADSCs Increase VEGF and SDF-1 Expression Levels in Cavernous Tissue. The expression level of VEGF in cavernous tissue was significantly lower in the DED group than in the normal control group, when

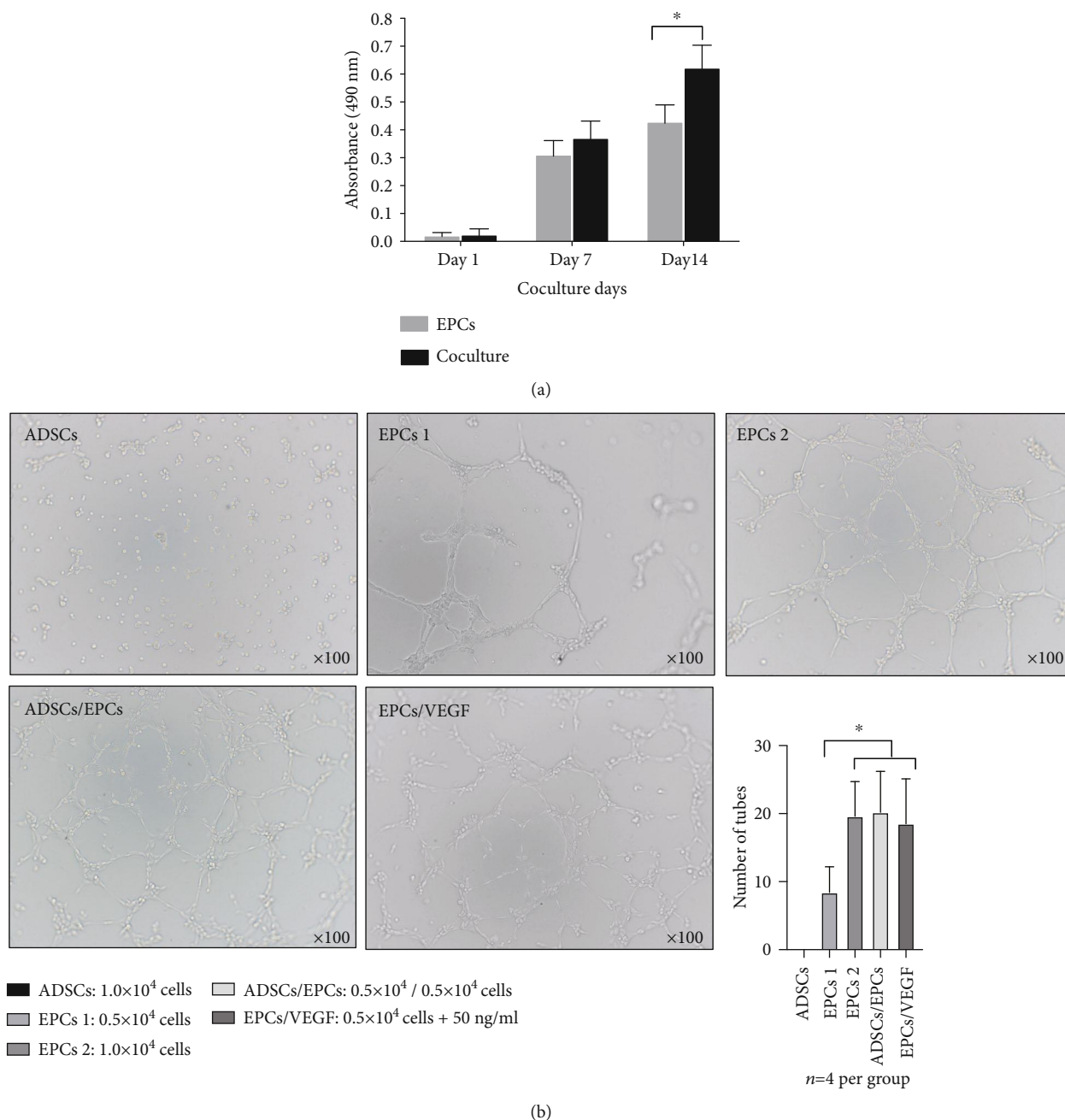


FIGURE 2: ADSCs enhanced the proliferation and angiogenesis of EPCs in vitro. (a) MTT assay showed that the number of EPCs cocultured with ADSCs was significantly more than EPCs cultured alone. * $p < 0.05$. $n = 3$ per group. (b) More tubes were formed on Matrigel by $0.5 \times 10^4 / 0.5 \times 10^4$ ADSCs/EPCs, 1.0×10^4 EPCs or 0.5×10^4 EPCs+50 ng/ml VEGF compared to 0.5×10^4 EPCs. * $p < 0.05$. $n = 4$ per group. MTT: 3-(4,5-dimethyl-2-thiazolyl)-2,5-diphenyl-2-H-tetrazolium bromide; VEGF: vascular endothelial growth factor.

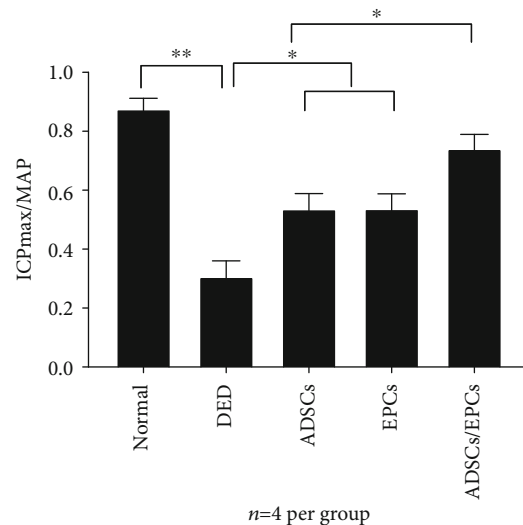
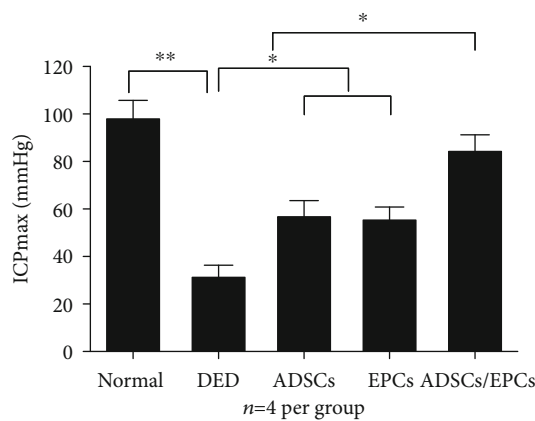
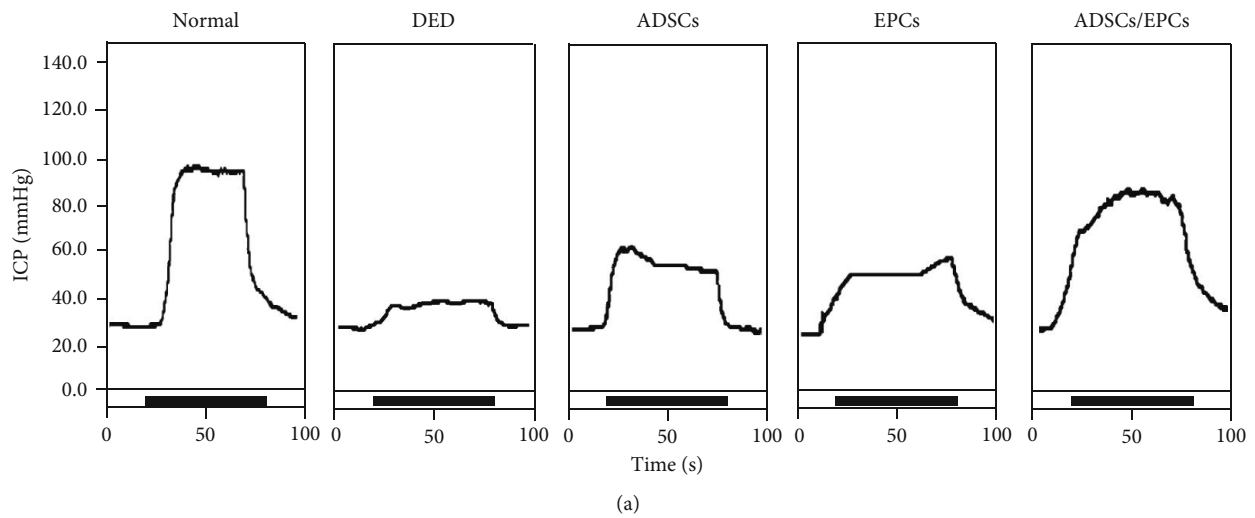
assessed with western blot, as our previous study has shown [8]. After intracavernous injection with ADSCs or ADSCs/EPCs, the expression level of VEGF was significantly increased within the cavernous tissue compared to the DED rats, while there were no differences between the EPC group and the DED group, suggesting that it was the paracrine effect of ADSCs but not EPCs which significantly increased the VEGF content in the cavernosum. Moreover, western blot demonstrated that the SDF-1 expression level in cavernous tissue in the ADSC group

and the ADSC/EPC group was significantly higher than that other groups ($p < 0.05$) (Figures 5(a) and 5(b)).

3.7. Transplantation of ADSCs Alone or with EPCs Increases nNOS Expression in the Penile Dorsal Nerves in DED Rats. Immunofluorescence staining demonstrated that the nNOS expression in the penile dorsal nerves in DED rats was significantly lower than that in the normal control rats ($p < 0.05$). After cell transplantation, rats in the ADSC group and the ADSC/EPC group both displayed higher nNOS expression

TABLE 1: The body weight and fasting glucose before and after cell transplantation in each group. Data are expressed as *mean ± standard deviation* from $N = 14$ per group. * $p < 0.05$ vs the control group. $\Delta p < 0.05$ vs the DEM group.

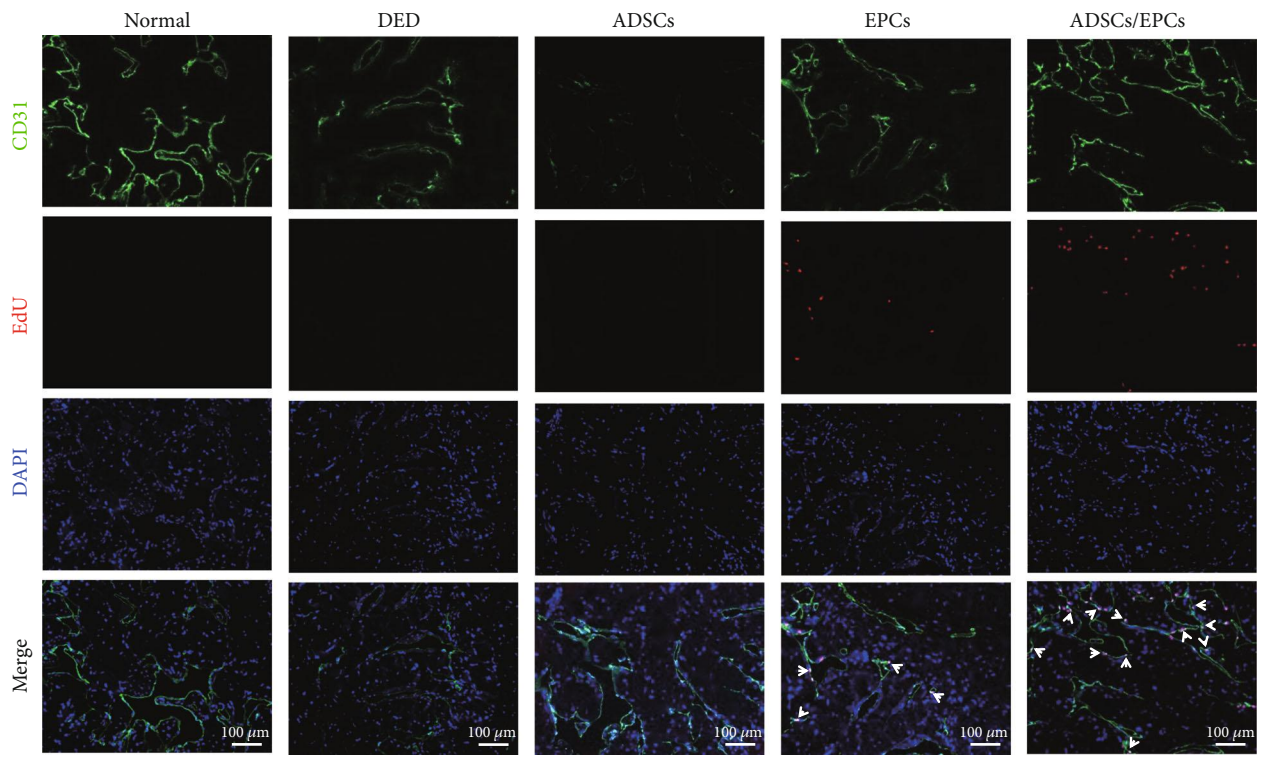
Variable	Normal ($n = 9$)	DED ($n = 9$)	ADSCs ($n = 9$)	EPCs ($n = 9$)	ADSCs/EPCs ($n = 9$)
Initial					
Body weight(g)	288.56 ± 22.13	290.13 ± 20.26	296.76 ± 21.22	302.54 ± 20.19	288.89 ± 19.07
Fasting glucose (mmol/L)	5.78 ± 0.49	5.82 ± 0.52	5.76 ± 0.50	5.88 ± 0.61	5.91 ± 0.43
Final (after 12 weeks)					
Body weight(g)	589.35 ± 41.32	225.12 ± 18.72*	230.66 ± 19.13* Δ	239.82 ± 20.45* Δ	229.46 ± 22.78* Δ
Fasting glucose (mmol/L)	5.83 ± 0.51	27.71 ± 2.45*	28.32 ± 1.69* Δ	28.11 ± 2.02* Δ	27.30 ± 1.95* Δ



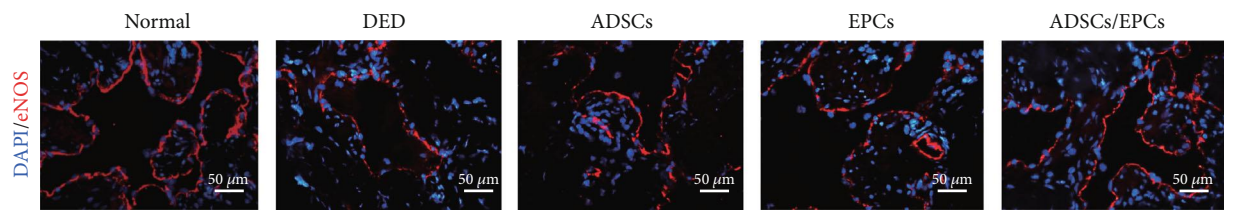
(b)

(c)

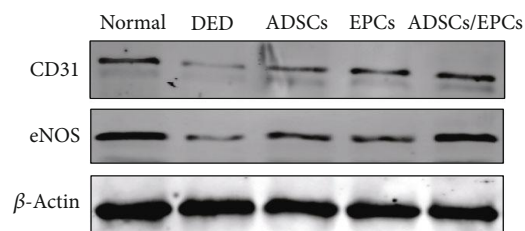
FIGURE 3: Combined transplantation of ADSCs and EPCs improved erectile function in the DED rats. (a) Representative ICP tracing response to the electronic stimulation of the cavernous nerve (5 V, 20 Hz, and 60 s duration) in DED rats after injection of PBS, ADSCs, EPCs, or ADSCs/EPCs ($n = 4$ rats per group). (b) The effects of ADSCs, EPCs, and ADSCs/EPCs on the increase of ICP in the DED rats. (c) The ratio of total ICP to MAP was calculated for all five groups. * $p < 0.05$, ** $p < 0.01$. ICP: intracavernous pressure; MAP: mean arterial pressure; PBS: phosphate-buffered saline.



(a)



(b)



(c)

FIGURE 4: Continued.

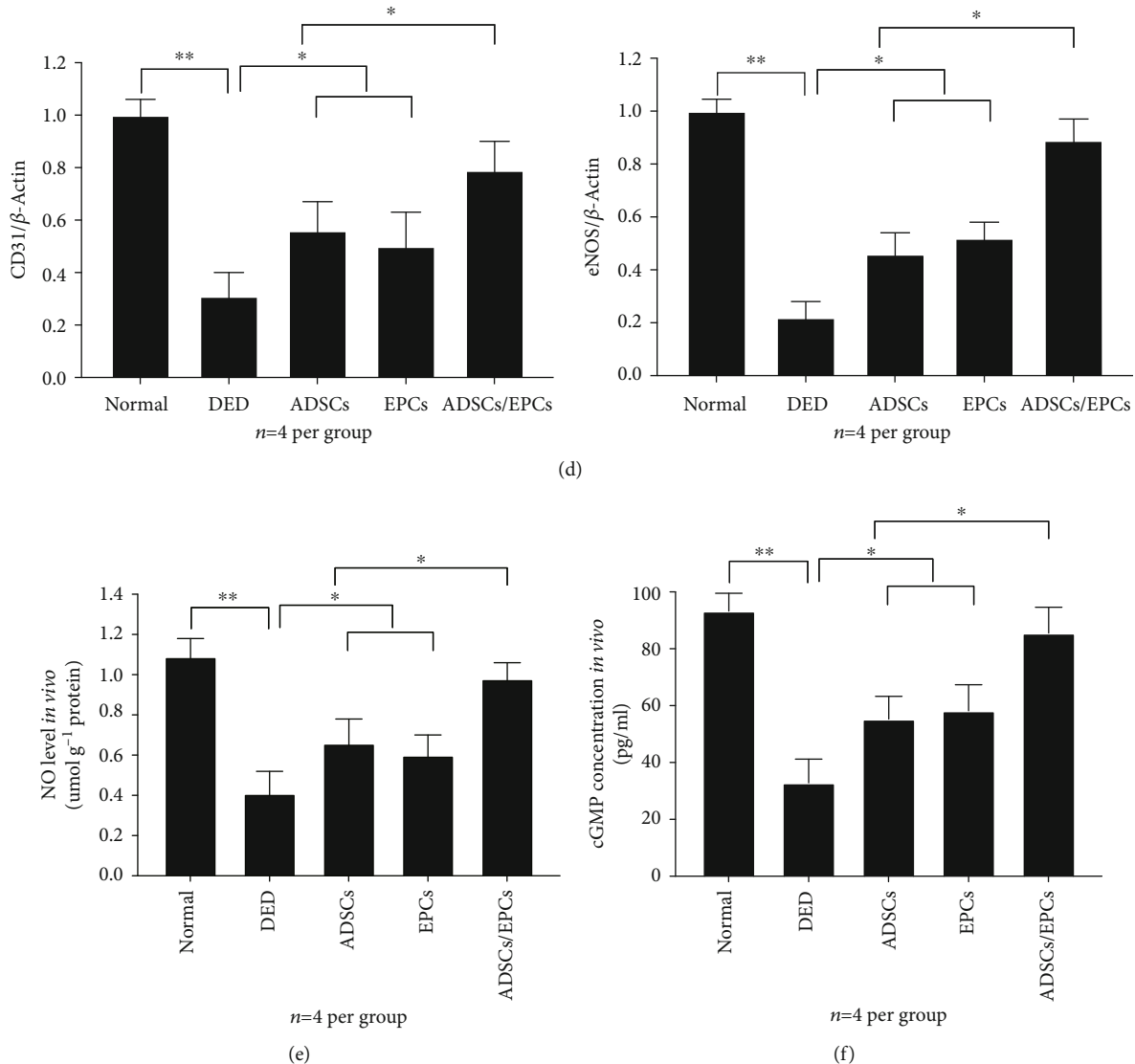


FIGURE 4: Combined transplantation of ADSCs and EPCs improved the endothelial function of DED rats. (a) Immunofluorescence staining of CD31 (green) and EdU (red) in the cavernous tissue in each group. The white arrow shows the transplanted EPCs. Scale bar: 100 μm . (b) Immunofluorescence staining of eNOS (red) in the cavernous tissue in each group. Scale bar: 50 μm . (c, d) The representative images and quantity analysis of western blotting, including CD31 and eNOS. Data is expressed as relative expression compared to β -actin and to the normal group. (e) NO level in the serum of each group determined by ELISA assay. (f) cGMP concentration in the cavernous tissue in each group was determined by ELISA. ** $p < 0.01$, * $p < 0.05$. EdU: 5-ethynyl-2'-deoxyuridine; eNOS: endothelial nitric oxide synthase; NO: nitric oxide; cGMP: cyclic guanosine monophosphate.

in the penile dorsal nerves compared to the DED group ($p < 0.05$), while there was no significant difference of nNOS expression between the EPC group and the DED group ($p > 0.05$) (Figure 6).

3.8. Combined Transplantation of ADSCs and EPCs Better Increases Smooth Muscle Content in the Cavernosa in DED Rats. Masson's trichrome staining showed that the SMC/collagen ratio was significantly decreased in the DED rats compared to the normal control rats ($p < 0.01$). Intracavernous injection of EPCs or ADSCs could improve the SMC/collagen ratio ($p < 0.05$), but it was still lower than that of the normal rats ($p < 0.05$). Interestingly, combined transplantation

of ADSCs and EPCs could almost completely restore the SMC/collagen ratio (Figures 7(a) and 7(b)).

4. Discussion

Diabetic erectile dysfunction is closely associated with endothelial dysfunction, smooth muscle atrophy, and nerve degeneration [22]. The response rate to PDE5 inhibitor, such as sildenafil, is low in DED patients [3]. Studies have demonstrated that the number of EPCs in the peripheral blood of diabetic ED patients was significantly decreased compared to the healthy men, and the function of EPCs was also impaired, which indicated that EPCs might be involved in

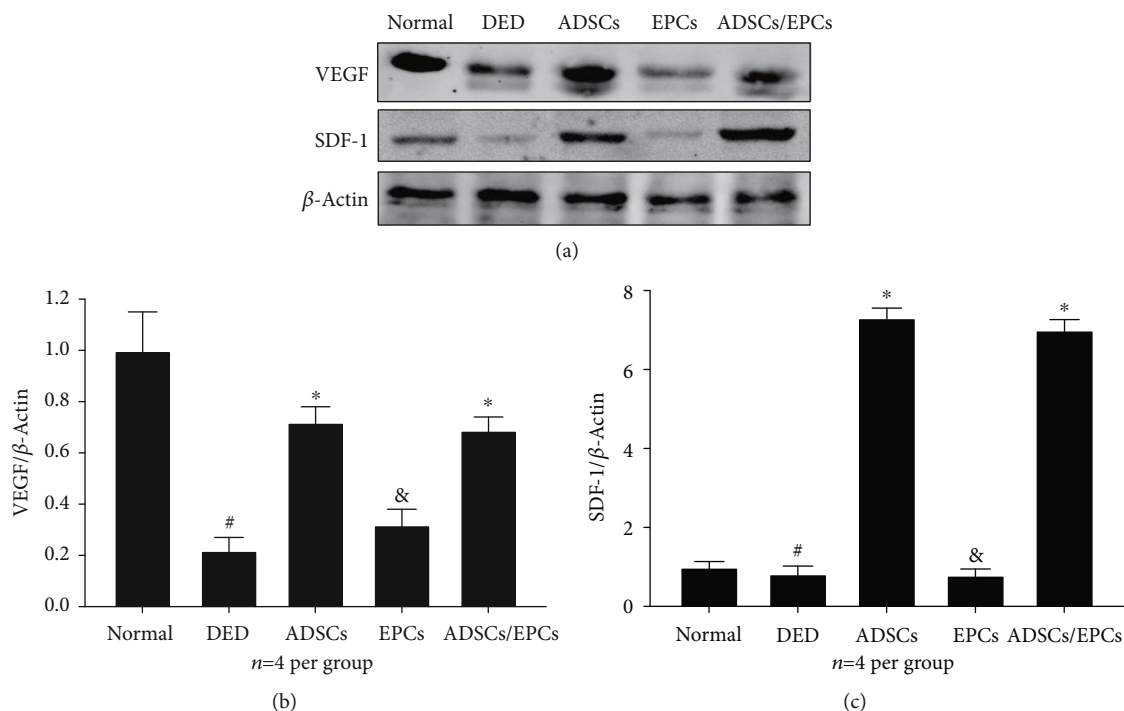


FIGURE 5: (a, b) The representative images of western blot of VEGF and SDF-1 in the cavernous tissue. (b, c) Quantitative analysis of western blotting, including VEGF and SDF-1. Data is expressed as relative expression compared to β -actin and to the normal group. #: compared with normal control, $p < 0.05$; * compared with the DED group, $p < 0.05$; &: compared with the DED group, $p > 0.05$. VEGF: vascular endothelial growth factor; SDF-1: stromal cell-derived factor-1.

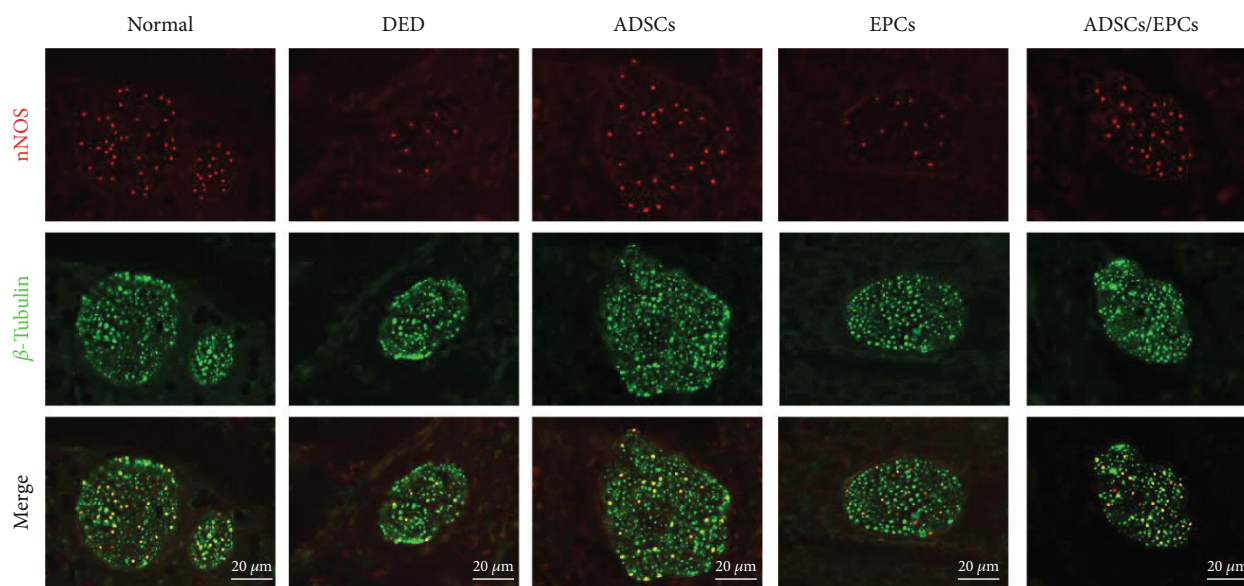
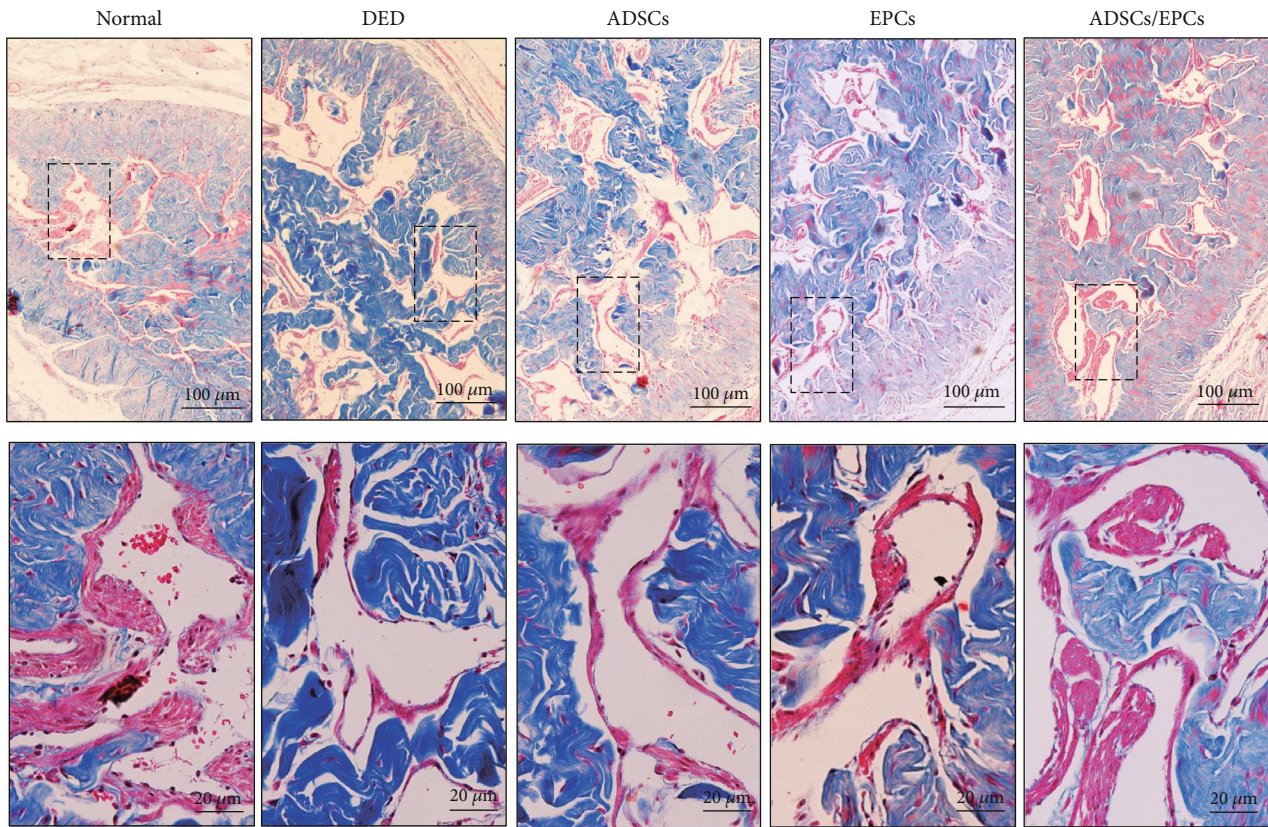


FIGURE 6: Transplantation of ADSCs or ADSCs/EPCs increased the nNOS-positive fibers in the penile dorsal nerve. Representative images of fluorescence containing of nNOS (red) and β -tubulin (green) in the penile dorsal nerve. Scale bar: 20 μ m. nNOS: neuronal nitric oxide synthase.

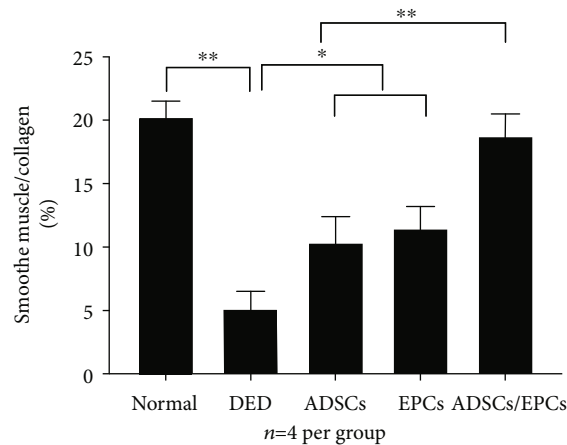
the pathogenesis of DED [23, 24]. Intracavernous injection of EPCs or ADSCs alone could partially restore the erectile function in the DED rat model [7, 16]. In this study, we found that cotransplantation of EPCs and ADSCs had a synergistic effect on repairing the endothelial function, thus significantly improved the erectile function in a STZ-

induced diabetic ED rat model. Besides, similar to other researches [17, 18], cotransplantation of EPCs and ADSCs was safe that no rat in the ADSC/EPC group died in our study.

Studies have demonstrated that EPCs could be recruited to the impaired vessel and differentiate into vascular endothelial



(a)



(b)

FIGURE 7: Combined transplantation of ADSCs and EPCs better increased smooth muscle content in the cavernosa in DED rats. (a) The representative images of Masson's trichrome staining of the cavernous tissue. Scale bar: 100 μm and 20 μm . (b) The smooth muscle-to-collagen ratio in the cavernous tissue was calculated in each experimental group. $n = 5$ per group; ** $p < 0.01$, * $p < 0.05$.

cells, thus repairing the vascular wall, which made it a promising strategy for the vascular regeneration [25]. Chronic administration of melatonin could prevent ED in the diabetic rats possibly via the mobilization of EPCs from the bone marrow [26]. In the present study, intracavernous injection of EPCs alone could partially restore the erectile function of DED rats by improving endothelial function. Our previous study found that the VEGF signaling system was impaired in the cavernous tissue of DED rats, which

led to the endothelial dysfunction and erectile dysfunction [8, 27]. Researches have revealed that the proliferation and differentiation of EPCs required a number of proangiogenic factors, especially VEGF [28, 29]. The defected VEGF signaling pathway in the DED rats may explain the partial restoration effect of intracavernous injection of EPCs alone. Gao et al. showed that intracavernous injection of VEGF165-transfected EPCs could significantly restore erectile function of DED rats [16].

ADSCs, which could be obtained by minimally invasive method and have great potential of multidifferentiation and paracrine effect, are widely used in the tissue regeneration region [30, 31]. Garcia et al. have first demonstrated that ADSCs could partially restore the erectile function of DED rats via the paracrine effect [7]. Furthermore, our previous study found that intracavernous injection of ADSCs genetically modified with VEGF could almost restore the erectile function of the DED rats, possibly via repairing the defected VEGF signaling system [8]. However, gene modification may have the risk of changing the host chromosome genome, which hinders its clinical application. Strassburg et al. showed that ADSCs could enhance the angiogenic potential of EPCs *in vitro* by secreting VEGF [32]. Our present study also found that ADSCs could significantly improve the proliferation of EPCs *in vitro* by transwell assay.

Cotransplantation of MSCs and EPCs have the synergistic effect in the treatment of cardiovascular disease [33] and cerebrovascular disease [34] and in the bone regeneration [35]. Fang et al. reported that combined periprostatic transplantation of MSCs and EPCs could significantly improve the erectile function in the cavernous nerve injury-induced ED rat model [36]. The mechanism might be MSCs could restore cavernous nerve by secreting neurotrophin factors containing NGF and VEGF, while EPCs could enhance the paracrine effect of MSCs. In our present study, the ICP and ICP/MAP ratio results revealed that intracavernous injection of $5 \times 10^5/5 \times 10^5$ ADSCs/EPCs could nearly almost restore the erectile function of DED rats, while transplantation of 1×10^6 ADSCs or 1×10^6 EPCs alone only partially restored the erectile function, which indicated the synergistic effect of ADSCs and EPCs in the treatment of DED. Moreover, nNOS expression in the ADSC group and the EPC/ADSC group was significantly higher than the PBS group and the EPC group, indicating the neuroprotective effect of ADSCs. But in Fang's study, cells were transplanted periprostatically, indicating that the therapeutic effect of ADSCs and/or EPCs was mostly via the paracrine activity. While in our research, stem cells were transplanted into the corpus cavernosum, making it possible to participate directly in the repair of cavernous tissue, especially the impaired endothelium.

We only labeled the EPCs with EdU in this study for the reason that others and our previous study all demonstrated that ADSCs could not be found in the cavernous tissue after 28-day transplantation. EdU-positive cells could be found lining in the endothelial layer in the cavernosum 28 days after cell transplantation. Interestingly, the total number of transplanted EPCs in the EPC/ADSC group was just half of the EPC group, but significantly more EdU-positive cells were found in the EPC/ADSC group than the EPC group, which could be partially attributed to the paracrine of VEGF by the cotransplanted ADSCs. ADSCs can paracrine not only proangiogenic factors but also stromal cell-derived factor 1 (SDF-1), which is a well-characterized cytokine that regulates the recruitment of EPCs to the sites of neo-angiogenic niches in the injured tissues [37–39]. Western blot results displayed high SDF-1 expression which was found in cavernous tissue in the ADSC group and the EPC/ADSC group, which might explain why more EdU-positive cells were found in the

EPC/ADSC group compared to the EPC group. SDF-1 improves the mobilization, migration, homing, and vasculogenesis of EPCs under hyperglycemia via activating the SDF-1/CXCR4 axis [10]. Moreover, research even found that VEGF and SDF-1 had a synergic effect on the angiogenic property of EPCs [40]. We speculate that SDF-1 might also recruit endogenous EPCs to the cavernosum to repair damaged endothelial function, but it needs more investigation.

There were several limitations in the current research. First, we could not identify whether the CD31 and EdU double-positive cells in the endothelium were EPCs or mature ECs, for both of them express CD31, and there is no single marker which could distinguish between them at present. Second, the study demonstrated that stem cell therapy may have a long-term effect in the treatment of pelvic neurovascular injury-induced ED [41]. Considering that hyperglycemia may affect the function of ADSCs and/or EPCs over time, the long-term efficacy of EPCs and ADSCs cotransplantation needs a long-term follow-up. Third, the optimal amount and proportion of transplanted ADSCs and EPCs need further study.

5. Conclusion

In the present study, we demonstrate that intracavernous cotransplantation of EPCs and ADSCs has a synergic effect in repairing the endothelial function, which significantly improves the erectile function in a type 2 diabetic ED rat model. The underlying mechanism might be the paracrine of VEGF and SDF-1 by ADSCs improves the recruitment and proliferation of EPCs in the cavernosum. Moreover, cotransplantation can also increase the smooth muscle and nNOS expression in the cavernosum in the DED rat model. Therefore, cotransplantation of EPCs and ADSCs might provide novel therapeutic opportunity for DED patients.

Data Availability

The data are available by contacting the corresponding authors.

Conflicts of Interest

The authors declare that there is no duality of interest associated with this manuscript.

Authors' Contributions

Qiyun, Yang, Wanmei, Chen, and Chi Zhang contributed equally to this work.

Acknowledgments

This work was supported by the National Natural Science Foundation of China (grant numbers 81671449, 81671834, 81571489, and 81871110); the Frontier and Key Technology Innovation Special Foundation of Guangdong Province, China (grant number 2016B030230001); the Natural Science Foundation of Guangdong Province, China (grant numbers 2015A030313013, 2016A030313229, and 2018A030310286);

the Health Care Collaborative Innovation Foundation Major Projects of Guangzhou City, Guangdong Province, China (grant number 201604020189); and the Youth Teacher Training Project of Sun Yat-sen University (grant numbers 17ykpy68 and 18ykpy09). The Basic scientific research project of Sun Yat-sen University (grant number 18zxxt14).

References

- [1] R. Shamloul and H. Ghanem, "Erectile dysfunction," *Lancet*, vol. 381, no. 9861, pp. 153–165, 2013.
- [2] F. Giugliano, M. Maiorino, G. Bellastella, M. Gicchino, D. Giugliano, and K. Esposito, "Determinants of erectile dysfunction in type 2 diabetes," *International Journal of Impotence Research*, vol. 22, no. 3, pp. 204–209, 2010.
- [3] G. P. Redrow, C. M. Thompson, and R. Wang, "Treatment strategies for diabetic patients suffering from erectile dysfunction: an update," *Expert Opinion on Pharmacotherapy*, vol. 15, no. 13, pp. 1827–1836, 2014.
- [4] A. Castela and C. Costa, "Molecular mechanisms associated with diabetic endothelial-erectile dysfunction," *Nature Reviews. Urology*, vol. 13, no. 5, pp. 266–274, 2016.
- [5] S. Gur, A. B. Abdel-Mageed, S. C. Sikka, and W. J. G. Hellstrom, "Advances in stem cell therapy for erectile dysfunction," *Expert Opinion on Biological Therapy*, vol. 18, no. 11, pp. 1137–1150, 2018.
- [6] X. Qiu, H. Lin, Y. Wang et al., "Intracavernous transplantation of bone marrow-derived mesenchymal stem cells restores erectile function of streptozocin-induced diabetic rats," *The Journal of Sexual Medicine*, vol. 8, no. 2, pp. 427–436, 2011.
- [7] M. M. Garcia, T. M. Fandel, G. Lin et al., "Treatment of erectile dysfunction in the obese type 2 diabetic ZDF rat with adipose tissue-derived stem cells," *The Journal of Sexual Medicine*, vol. 7, no. 1, pp. 89–98, 2010.
- [8] G. Liu, X. Sun, J. Bian et al., "Correction of Diabetic Erectile Dysfunction with Adipose Derived Stem Cells Modified with the Vascular Endothelial Growth Factor Gene in a Rodent Diabetic Model," *PLoS ONE*, R. Kirchmair, Ed., vol. 8, no. 8, p. e72790, 2013.
- [9] B. Ouyang, X. Sun, D. Han et al., "Human urine-derived stem cells alone or genetically-modified with FGF2 Improve type 2 diabetic erectile dysfunction in a rat model," *PLoS One*, A. Y. W. Chang, Ed., vol. 9, no. 3, p. e92825, 2014.
- [10] J. Wils, J. Favre, and J. Bellien, "Modulating putative endothelial progenitor cells for the treatment of endothelial dysfunction and cardiovascular complications in diabetes," *Pharmacology & Therapeutics*, vol. 170, pp. 98–115, 2017.
- [11] E. B. Peters, "Endothelial progenitor cells for the vascularization of engineered tissues," *Tissue Engineering Part B: Reviews*, vol. 24, no. 1, pp. 1–24, 2018.
- [12] J. You, J. Sun, T. Ma et al., "Curcumin induces therapeutic angiogenesis in a diabetic mouse hindlimb ischemia model via modulating the function of endothelial progenitor cells," *Stem Cell Research & Therapy*, vol. 8, no. 1, p. 182, 2017.
- [13] S. Liao, C. Luo, B. Cao et al., "Endothelial progenitor cells for ischemic stroke: update on basic research and application," *Stem Cells International*, vol. 2017, 12 pages, 2017.
- [14] A. Petrelli, R. Di Fenza, M. Carvello, F. Gatti, A. Secchi, and P. Fiorina, "Strategies to reverse endothelial progenitor cell dysfunction in diabetes," *Experimental Diabetes Research*, vol. 2012, 9 pages, 2012.
- [15] A. L. George, P. Bangalore-Prakash, S. Rajoria et al., "Endothelial progenitor cell biology in disease and tissue regeneration," *Journal of hematology & oncology*, vol. 4, no. 1, p. 24, 2011.
- [16] X. Gou, W.-Y. He, M.-Z. Xiao et al., "Transplantation of endothelial progenitor cells transfected with VEGF165 to restore erectile function in diabetic rats," *Asian Journal of Andrology*, vol. 13, no. 2, pp. 332–338, 2010.
- [17] H. Zigdon-Giladi, T. Bick, D. Lewinson, and E. E. Machtei, "Co-transplantation of endothelial progenitor cells and mesenchymal stem cells promote neovascularization and bone regeneration," *Clinical Implant Dentistry and Related Research*, vol. 17, no. 2, pp. 353–359, 2015.
- [18] X. Zhang, M. Wei, W. Zhu, and B. Han, "Combined transplantation of endothelial progenitor cells and mesenchymal stem cells into a rat model of isoproterenol-induced myocardial injury," *Archives of Cardiovascular Diseases*, vol. 101, no. 5, pp. 333–342, 2008.
- [19] A. Lu, B. Sun, and L. Qian, "Combined iNO and endothelial progenitor cells improve lung alveolar and vascular structure in neonatal rats exposed to prolonged hyperoxia," *Pediatric Research*, vol. 77, no. 6, pp. 784–792, 2015.
- [20] X. Chen, Q. Yang, T. Zheng et al., "Neurotrophic Effect of Adipose Tissue-Derived Stem Cells on Erectile Function Recovery by Pigment Epithelium-Derived Factor Secretion in a Rat Model of Cavernous Nerve Injury," *Stem Cells International*, vol. 2016, Article ID 5161248, 12 pages, 2016.
- [21] J. P. W. Heaton, S. J. Varrin, and A. Morales, "The characterization of a bio-assay of erectile function in a rat model," *The Journal of Urology*, vol. 145, no. 5, pp. 1099–1102, 1991.
- [22] L. S. Malavige and J. C. Levy, "Erectile dysfunction in diabetes mellitus," *The Journal of Sexual Medicine*, vol. 6, no. 5, pp. 1232–1247, 2009.
- [23] M. Murata, H. Tamemoto, T. Otani et al., "Endothelial impairment and bone marrow-derived CD34₊/133₊ cells in diabetic patients with erectile dysfunction," *Journal of Diabetes Investigation*, vol. 3, no. 6, pp. 526–533, 2012.
- [24] M. I. Maiorino, G. Bellastella, M. Petrizzo et al., "Circulating endothelial progenitor cells in type 1 diabetic patients with erectile dysfunction," *Endocrine*, vol. 49, no. 2, pp. 415–421, 2015.
- [25] Y. Fujita and A. Kawamoto, "Stem cell-based peripheral vascular regeneration," *Advanced Drug Delivery Reviews*, vol. 120, pp. 25–40, 2017.
- [26] X. F. Qiu, X. X. Li, Y. Chen et al., "Mobilisation of endothelial progenitor cells: one of the possible mechanisms involved in the chronic administration of melatonin preventing erectile dysfunction in diabetic rats," *Asian Journal of Andrology*, vol. 14, no. 3, pp. 481–486, 2012.
- [27] G. Liu, X. Sun, Y. Dai et al., "Chronic administration of sildenafil modified the impaired VEGF system and improved the erectile function in rats with diabetic erectile dysfunction," *The Journal of Sexual Medicine*, vol. 7, no. 12, pp. 3868–3878, 2010.
- [28] Q. Ge, H. Zhang, J. Hou et al., "VEGF secreted by mesenchymal stem cells mediates the differentiation of endothelial progenitor cells into endothelial cells via paracrine mechanisms," *Molecular Medicine Reports*, vol. 17, no. 1, pp. 1667–1675, 2017.
- [29] S. Aday, J. Zoldan, M. Besnier et al., "Synthetic microparticles conjugated with VEGF₁₆₅ improve the survival of endothelial

- progenitor cells via *microRNA-17* inhibition,” *Nature Communications*, vol. 8, no. 1, p. 747, 2017.
- [30] L. Bacakova, J. Zarubova, M. Travnickova et al., “Stem cells: their source, potency and use in regenerative therapies with focus on adipose-derived stem cells - a review,” *Biotechnology Advances*, vol. 36, no. 4, pp. 1111–1126, 2018.
- [31] C. S. Lin, Z. C. Xin, Z. Wang et al., “Stem cell therapy for erectile dysfunction: a critical review,” *Stem Cells and Development*, vol. 21, no. 3, pp. 343–351, 2012.
- [32] S. Strassburg, H. Nienhueser, G. B. Stark, G. Finkenzeller, and N. Torio-Padron, “Human adipose-derived stem cells enhance the angiogenic potential of endothelial progenitor cells, but not of human umbilical vein endothelial cells,” *Tissue Engineering. Part A*, vol. 19, no. 1-2, pp. 166–174, 2013.
- [33] G. Chen, A. Yue, H. Yu et al., “Mesenchymal stem cells and mononuclear cells from cord blood: cotransplantation provides a better effect in treating myocardial infarction,” *Stem Cells Translational Medicine*, vol. 5, no. 3, pp. 350–357, 2016.
- [34] K. Sun, Z. Zhou, X. Ju et al., “Combined transplantation of mesenchymal stem cells and endothelial progenitor cells for tissue engineering: a systematic review and meta-analysis,” *Stem Cell Research & Therapy*, vol. 7, no. 1, p. 151, 2016.
- [35] H. Zigdon-Giladi, T. Bick, D. Lewinson, and E. E. Machtei, “Mesenchymal stem cells and endothelial progenitor cells stimulate bone regeneration and mineral density,” *Journal of Periodontology*, vol. 85, no. 7, pp. 984–990, 2014.
- [36] J. F. Fang, X. N. Huang, X. Y. Han et al., “Combined transplantation of mesenchymal stem cells and endothelial progenitor cells restores cavernous nerve injury-related erectile dysfunction,” *The Journal of Sexual Medicine*, vol. 15, no. 3, pp. 284–295, 2018.
- [37] N. Nakao, T. Nakayama, T. Yahata et al., “Adipose tissue-derived mesenchymal stem cells facilitate hematopoiesis *in vitro* and *in vivo*: advantages over bone marrow-derived mesenchymal stem cells,” *The American Journal of Pathology*, vol. 177, no. 2, pp. 547–554, 2010.
- [38] Y. Li, S. Chang, W. Li et al., “*cxcl12*-engineered endothelial progenitor cells enhance neurogenesis and angiogenesis after ischemic brain injury in mice,” *Stem Cell Research & Therapy*, vol. 9, no. 1, p. 139, 2018.
- [39] Y. Wang, H. Yu, Y. Shan et al., “EphA1 activation promotes the homing of endothelial progenitor cells to hepatocellular carcinoma for tumor neovascularization through the SDF-1/CXCR4 signaling pathway,” *Journal of Experimental & Clinical Cancer Research*, vol. 35, no. 1, 2016.
- [40] G. Odent Grigorescu, A. M. Rosca, M. B. Preda, R. Tutuianu, M. Simionescu, and A. Burlacu, “Synergic effects of VEGF-A and SDF-1 on the angiogenic properties of endothelial progenitor cells,” *Journal of Tissue Engineering and Regenerative Medicine*, vol. 11, no. 11, pp. 3241–3252, 2017.
- [41] X. Gu, H. Shi, E. Matz et al., “Long-term therapeutic effect of cell therapy on improvement in erectile function in a rat model with pelvic neurovascular injury,” *BJU International*, vol. 124, no. 1, pp. 145–154, 2019.