



OPEN

Comparing the responses of the UK, Sweden and Denmark to COVID-19 using counterfactual modelling

Swapnil Mishra^{1,2,5}✉, James A. Scott^{3,5}, Daniel J. Laydon^{1,2,5}, Seth Flaxman^{3,5}, Axel Gandy³, Thomas A. Mellan^{1,2}, H. Juliette T. Unwin^{1,2}, Michaela Vollmer^{1,2}, Helen Coupland^{1,2}, Oliver Ratmann^{1,2}, Melodie Monod^{1,2}, Harrison H. Zhu^{1,2}, Anne Cori^{1,2}, Katy A. M. Gaythorpe^{1,2}, Lilith K. Whittles^{1,2}, Charles Whittaker^{1,2}, Christl A. Donnelly^{1,4}, Neil M. Ferguson^{1,2,5}✉ & Samir Bhatt^{1,2,5}

The UK and Sweden have among the worst per-capita COVID-19 mortality in Europe. Sweden stands out for its greater reliance on voluntary, rather than mandatory, control measures. We explore how the timing and effectiveness of control measures in the UK, Sweden and Denmark shaped COVID-19 mortality in each country, using a counterfactual assessment: what would the impact have been, had each country adopted the others' policies? Using a Bayesian semi-mechanistic model without prior assumptions on the mechanism or effectiveness of interventions, we estimate the time-varying reproduction number for the UK, Sweden and Denmark from daily mortality data. We use two approaches to evaluate counterfactuals which transpose the transmission profile from one country onto another, in each country's first wave from 13th March (when stringent interventions began) until 1st July 2020. UK mortality would have approximately doubled had Swedish policy been adopted, while Swedish mortality would have more than halved had Sweden adopted UK or Danish strategies. Danish policies were most effective, although differences between the UK and Denmark were significant for one counterfactual approach only. Our analysis shows that small changes in the timing or effectiveness of interventions have disproportionately large effects on total mortality within a rapidly growing epidemic.

The different policy responses to COVID-19 between Sweden and other European countries have generated much discussion. Sweden relied heavily on voluntary recommendations, while most other countries favoured mandatory large-scale social distancing “lockdown”. Comparing the cumulative per-capita COVID-19 mortality in Sweden to that of Denmark and the UK is informative (Fig. 1a). While suppression of the epidemic (a reduction in the time-varying reproduction number R_t to below 1) was achieved in all three countries, mortality varied substantially. Initially, Denmark and Sweden had similar epidemic trajectories, suggesting similar levels of infection seeding in each country. Following the introduction of controls between March 13th and 18th, Denmark's epidemic flattened more rapidly than Sweden's, and by August Sweden had a five-fold higher mortality than Denmark. The UK trajectory differed from those Scandinavian countries in its higher early mortality, suggesting earlier or greater infection seeding. Nevertheless, despite its higher infection prevalence prior to the introduction of controls, by August the UK's cumulative mortality was similar to Sweden's.

Behavioural data (Fig. 1b,c) suggest that the major difference between Sweden, the UK, and Denmark was the rapidity with which population contact rates were reduced, rather than the extent of this reduction. Self-reported behaviour¹, data on population mobility², and tracking of governmental interventions³ all tell a consistent story (Fig. 1b,c): in March, during the critical early period of exponential growth, changes in behaviour and policy in Sweden were less dramatic than those seen in the other countries shown. However, by April, the behaviour

¹MRC Centre for Global Infectious Disease Analysis, Imperial College London, London, UK. ²Jameel Institute for Disease and Emergency Analytics, Imperial College London, London, UK. ³Department of Mathematics, Imperial College London, London, UK. ⁴Department of Statistics, University of Oxford, Oxford, UK. ⁵These authors contributed equally: Swapnil Mishra, James A. Scott, Daniel J. Laydon, Seth Flaxman, Neil M. Ferguson and Samir Bhatt. ✉email: s.mishra@imperial.ac.uk; neil.ferguson@imperial.ac.uk

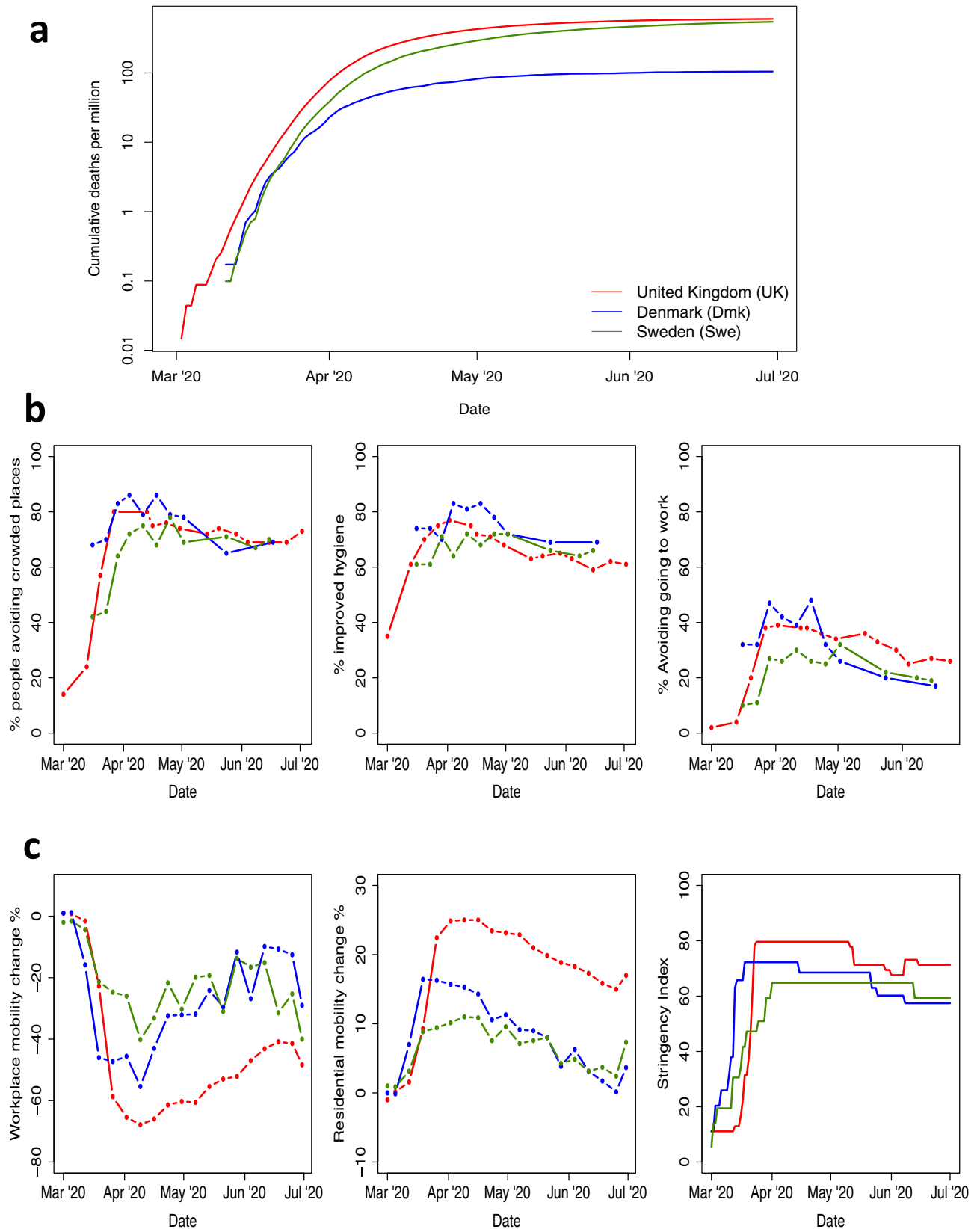


Figure 1. Responses to the COVID-19 epidemic in the UK (red), Denmark (Blue) and Sweden (Green). **(a)** Cumulative laboratory-confirmed COVID-19 deaths per million by date of death. **(b)** Results of YouGov surveys of population behavioural responses to COVID-19¹. The percentage of people: avoiding crowded public places (left); who report improved personal hygiene, e.g. frequent hand washing/using hand sanitiser (centre); avoiding going to work (right). **(c)** Google COVID-19 community mobility report data² giving change from baseline in mobility associated with workplaces (left), and in residential mobility (i.e. time spent at home) (centre). Right plots the OxCGRt COVID-19 intervention stringency index³ measuring the number of COVID-19 policies present at any given time.

of the Swedish population had caught up, and by June stringency measures of government policy were more similar to the UK or Denmark. Although lockdown in the UK led to greater changes in mobility and higher intervention stringency than in Denmark and Sweden, these changes happened a critical few days later than in Denmark (Fig. 1c).

Here we build on this qualitative comparison of mortality trends, and use counterfactual analysis to explore how the final death toll is influenced by both the effectiveness of interventions, and the timing of interventions relative to the stage of the epidemic in each country. We choose to focus on three countries: the UK, Denmark and Sweden. Denmark and Sweden are neighbours with demographic, social and economic similarities, and both countries experienced similar initial profiles of per-capita COVID-19 mortality (Fig. 1a). However, policy responses to COVID-19 differed markedly between the two countries, and from late March COVID-19 mortality trends diverged. We include the UK in our analysis because it is another Northern European country that experienced similar cumulative per-capita COVID-19 mortality to Sweden, while adopting control policies similar to those of Denmark.

We address the counterfactual question: how would the Swedish approach to COVID-19 management have affected the epidemics of Denmark and the UK? Conversely, what impact would the policies of those two countries have had on the Swedish epidemic? Our aim is to inform future decision-making by illuminating how the timing and effectiveness of interventions interacted to influence the final disease burden experienced by a country. Since countries are unique, and randomised trials of such population-wide policies are impossible, tackling this question requires counterfactual modelling. Here we use a simple data-driven approach, which makes no prior assumptions about the effectiveness of individual policies, and which preserves apparent differences between countries in the trajectories of their early epidemics, prior to the introduction of social distancing measures. We consider only the first wave of transmission (up to July 2020), encompassing the initial adoption of policies to achieve suppression of transmission and the early relaxation of those policies. We use a Bayesian statistical approach to propagate uncertainty and an established semi-mechanistic transmission model⁴, and consider two approaches to evaluating each counterfactual scenario. While we cannot fully encompass the myriad of differences between each country, our analysis is nonetheless informative on best practice for control of future waves of the COVID-19 pandemic.

Methods

The challenge in proposing a plausible counterfactual model is preserving the specific properties of each country, such as the basic reproduction number R_0 and the initial seeding of infection into the country, while transposing the impacts of policy-driven population behaviour change on transmission. For example, a plausible counterfactual scenario for the UK must preserve the fact that London is an international transport hub, which therefore experienced a high level of seeding of new infections from flights at the beginning of March⁵.

We start by fitting a semi-mechanistic model of disease transmission to the first wave of the epidemic, in all three countries spanning the period February to July 2020. The primary quantity we estimate is the time-varying reproduction number, R_t , using daily death data. In addition, we estimate an initial level of external seeding of infection into each country. We use a random walk to capture the changes in disease transmission due to non-pharmaceutical interventions (NPIs). It is important to note that these differences in R_t encompass changes in population behaviour, and external drivers such as infection seeding from flights, and not only governmental behavioural edicts. In all models we assume that R_t is fixed at R_0 until 13th March 2020. This assumption is necessary to prevent artefacts in R_t that could arise from poor death reporting and lack of testing at that time⁶. With these estimates, we consider two approaches to projecting counterfactuals.

Absolute R_t approach. Starting on 13th March 2020, the week in which substantial social distancing measures were introduced in most European countries, and continuing until June 2020, we replace the values of R_t in the ‘recipient’ country (e.g. UK) with those of the ‘donor’ country (e.g. Sweden) on the same day. The values of R_0 and infection seeding originally estimated for the recipient country remain unchanged. We then simulate the epidemic in the recipient country with the modified R_t profile. This counterfactual represents the true course of the epidemic until 13th March, after which the recipient experiences the transmission intensity of the donor.

Relative R_t approach. Our second approach is nearly identical to the first, except that instead of swapping exact values of R_t , we consider relative reductions in R_t starting on 13th March 2020. Hence we apply the observed donor country’s relative reductions in R_0 (i.e. $\frac{R_t}{R_0}$) after that date to the recipient country’s R_0 by simple multiplication. This counterfactual represents the true course of the epidemic until 13th March, after which the recipient experiences the relative reductions in transmission intensity of the donor.

We apply both approaches to examine the effect of Sweden, Denmark and the UK each adopting each other’s policies. The notation we use to describe counterfactuals is **donor** → **recipient**. Specifically the counterfactuals estimated are **Sweden** → **UK**, **Sweden** → **Denmark**, **UK** → **Sweden**, **UK** → **Denmark**, **Denmark** → **UK** and **Denmark** → **Sweden**. Full model details and assumptions are given in Supplementary Information Section S2.

Results

Figure 2 shows, for each **donor** → **recipient** scenario, counterfactual R_t profiles together with the original fitted R_t profiles for each country. Figure 3 shows the counterfactual daily infection incidence profiles, together with the original estimates for each country. These plots demonstrate both the rapidity with which infections rise prior to the introduction of controls, but also how relatively small differences in R_t can lead to large differences in the number of infections. Figure 4 shows counterfactual daily deaths for each country.

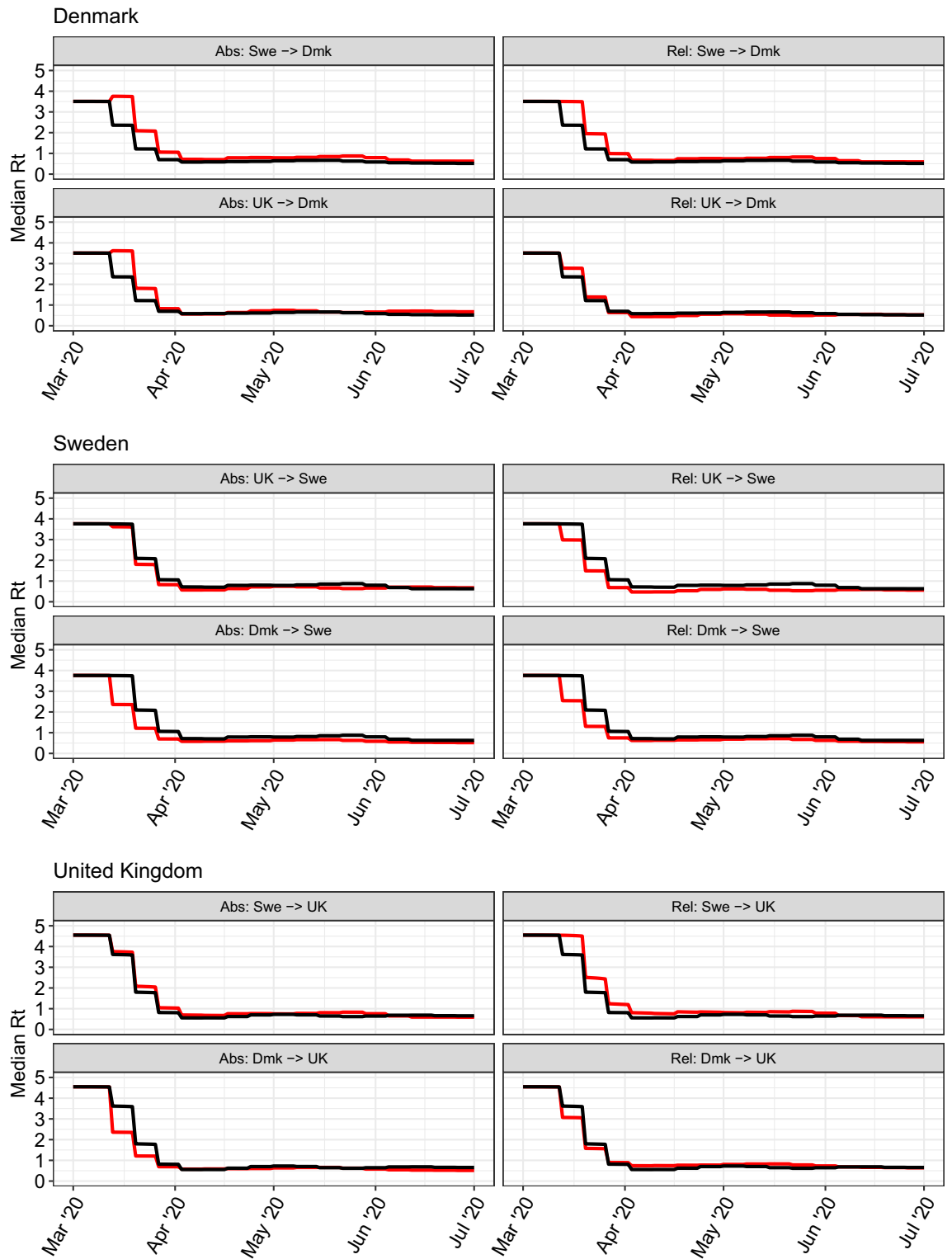


Figure 2. Median time-varying reproduction number over time (R_t) for Denmark (top block), Sweden (middle block) and the UK (lower block). Counterfactual R_t profiles are in red and original fitted R_t profiles are in black. For clarity, credible intervals are not shown, (see Figure S3 for uncertainty). Left column shows results for the absolute R_t transposition approach, right column for the relative R_t/R_0 transposition approach.

The UK experienced the highest per-capita mortality (Table 1), followed closely by Sweden, with Denmark considerably lower. The UK also experienced the highest total number of deaths (Fig. 4, Table S1). We estimate that if Denmark had adopted Swedish policies, and introduced them at the same stage of its epidemic, mortality

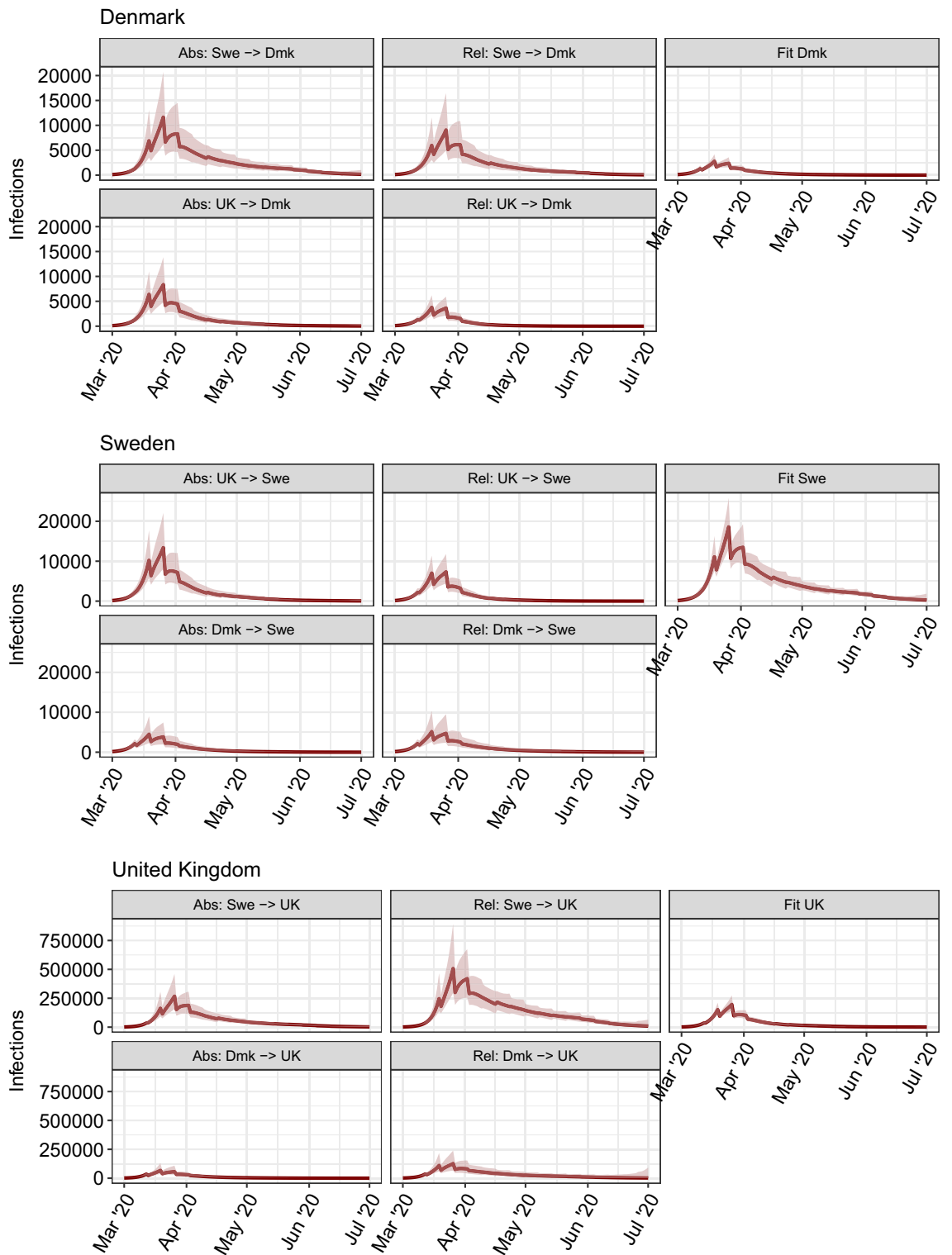


Figure 3. Median daily infection incidence with 95% credible interval for Denmark (top block), Sweden (middle block) and the UK (lower block). Left column shows results for the absolute R_t transposition approach, middle column for the relative R_t/R_0 transposition approach, and right column shows the fit to observed data (i.e. without counterfactual swapping). Plots show y-axis on the same scale to highlight differences between scenarios.

would have been between three and four (Table 1) times higher, and thus Denmark would have experienced similar per-capita mortality to Sweden. If Denmark followed UK policies, our relative approach estimates that

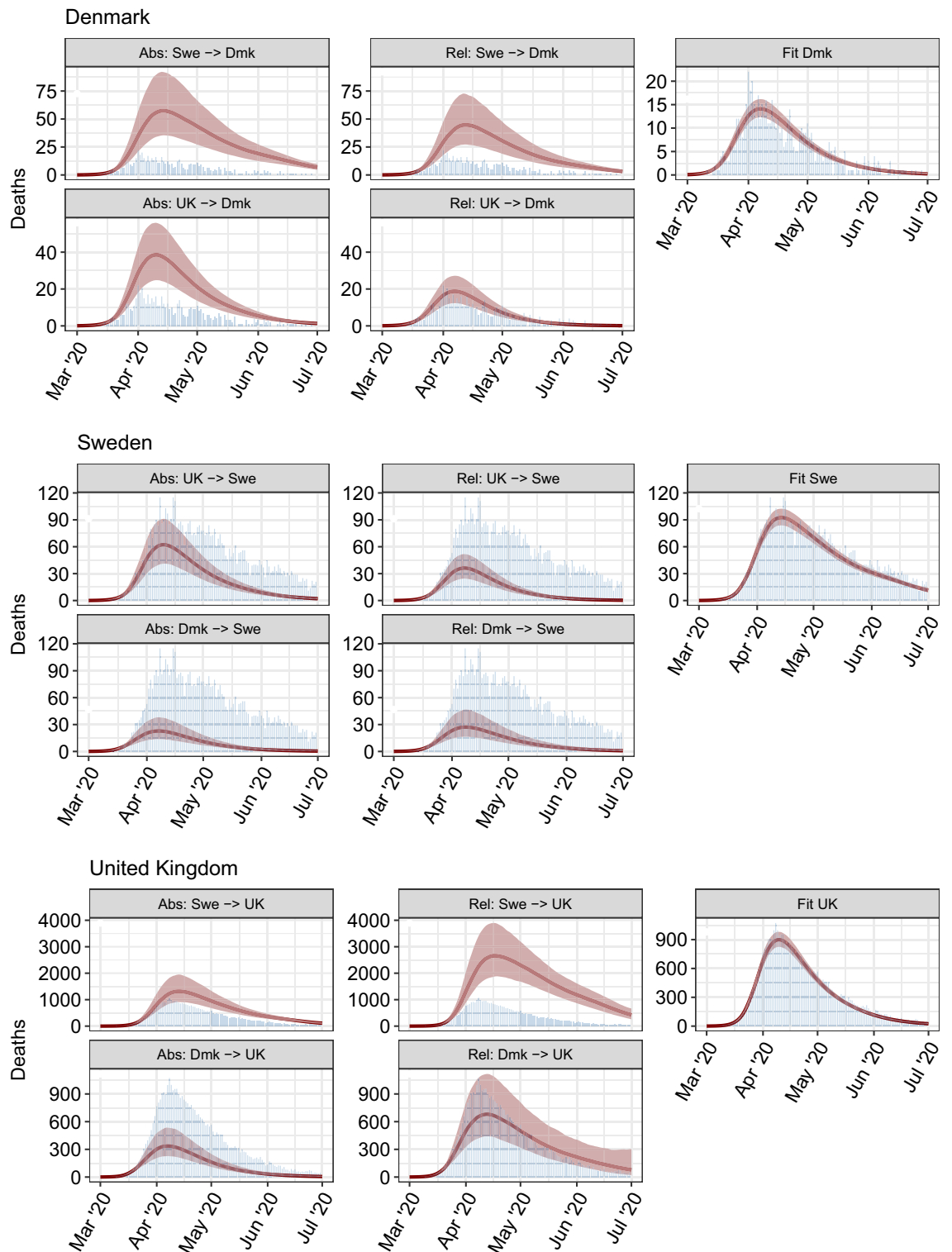


Figure 4. As per Fig. 3 but for daily deaths (red curves with shaded 95% credible intervals). Observed deaths are shown as blue bars.

mortality would not have been markedly different, although our absolute approach implies that mortality would have been more than twice that observed (1). If Sweden had adopted Danish policies, both the absolute and relative approaches imply that there would have been approximately one fifth as many deaths. Sweden adopting UK policies would have resulted in a two- to four- fold reduction in mortality (Table 1). Had the UK adopted Swedish policies, deaths would have increased deaths by a factor of between 1.6 and 4 (Table 1). The UK adopting Danish policies would have reduced deaths by three fold with the absolute approach, but would have made little difference according to the relative approach (Table 1), although there is considerable uncertainty in the latter.

Donor Country	Recipient Country		
	Denmark	Sweden	United Kingdom
Denmark	105	96 [60-158] 122 [75-204]	209 [143-312] 558 [359-899]
Sweden	522 [327-792] 366 [231-579]	546	972 [691-1342] 2299 [1,733-3,057]
United Kingdom	277 [179-404] 116 [75-172]	260 [172-385] 135 [91-194]	599

Table 1. COVID-19-attributed deaths per million for the UK, Denmark and Sweden until 1st July 2020. Diagonal elements show observed mortality (black text), off-diagonal elements show mortality (median with 95% credible intervals) for counterfactual scenarios. Top red text in each row denotes counterfactuals estimated using the absolute R_t transposition approach. Bottom blue text in each row denotes counterfactuals estimated using the relative R_t/R_0 transposition approach.

Two predominant factors explain the differences between the observed data and the counterfactual scenarios: the timing of interventions and their effectiveness, i.e. the extent to which these interventions reduced transmission. Rapid epidemic growth in all three countries in March ensured that small changes in either factor can have disproportionately large effects on total mortality.

Looking first at the absolute R_t transposition approach, Denmark introduced major social distancing policies a few days earlier than both of the other two countries^{4,7}. However, with an epidemic doubling time of 3–4 days⁸, a 3-day difference in the introduction of measures can lead to twofold differences in mortality. Second, in Sweden, R_t took slightly longer to fall below 1 than in the UK, so when this profile is applied to the UK, its high prevalence on March 13th generated substantially more secondary infections than were seen after the policy was actually adopted. The converse is true for Sweden: the UK's reduction of R_t was slightly faster than Sweden's, and even this small difference translates into large reductions in predicted mortality. Had the UK adopted Danish policies, mortality would have been more than halved, owing to the earlier declines in R_t seen in Denmark. If Denmark had adopted Swedish policies, we estimate that its per-capita mortality would have seen comparable to Sweden's.

Our second approach to estimating counterfactuals—swapping relative changes in R_t after 16 March—gives qualitatively similar results for the Sweden–Denmark and UK–Sweden comparisons, although there are some discrepancies for the Denmark–UK comparison. The discrepancies arise from the differences in R_0 estimates between the three countries we consider: UK being highest, Sweden next and Denmark the lowest. Thus applying the Swedish relative changes in R_t to the UK gives higher resulting R_t values after 13 March, leading to even greater ongoing transmission and mortality. The converse is true applying UK policies to Sweden. Differences between the impact of policies in Denmark and the UK are much smaller with the relative approach than the absolute one, with UK policies estimated to have been marginally slower than Danish ones in reducing R_t in March, but to have achieved a slightly lower R_t value by April.

Discussion

Denmark, Sweden and the UK all managed to suppress the first wave of their respective epidemics. However, the timing and effectiveness of interventions varied substantially between those countries. Our counterfactual profiles show a remarkable contrast between the small differences in the time taken to suppress R_t to below 1 [Fig. 2] and the large differences in resulting death tolls [Fig. 4, Table 1]. The counterfactuals therefore demonstrate that small changes in the timing or effectiveness of intervention policies can lead to large changes in the resulting cumulative death toll, especially in the context of the rapid exponential growth initially seen in the UK, Sweden and Denmark. This result reinforces earlier work demonstrating that minimising COVID-19 mortality in the face of exponentially growing case numbers requires early and effective interventions^{9–11}.

Measures adopted in Sweden relied upon voluntary population adherence with government recommendations. We implicitly assume in this analysis that the UK and Danish populations would have been as adherent to non-mandatory recommendations as was Sweden's. Given that population trust in public institutions is higher in Scandinavia than the UK¹², this may be an optimistic assumption for the UK.

Our analysis indicates that while all three countries successfully suppressed COVID-19 transmission, the slightly lower effectiveness of Sweden's policies yielded substantial differences in predicted final mortality. There was more limited evidence of a smaller difference in intervention effectiveness between the UK and Denmark. While Denmark may have had marginally more effective and timely policies, the main reason that the UK saw substantially higher per-capita mortality was that infection prevalence was higher when interventions were introduced. This may have been caused by a higher R_0 in the UK, and/or higher levels of infection seeding into the UK.

The differences between estimates from our absolute and relative approaches can be explained by the different R_0 estimates in each country. Mechanistically, most social distancing interventions have a multiplicative effect on R_0 , suggesting our relative approach is the most plausible. However, because estimates of R_0 and initial infection seeding are highly co-linear, it may be that the differences in our estimated R_0 values at least partly

reflect differences in infection seeding. Nevertheless, demographic and cultural differences between the UK and Sweden (e.g. in the proportion of one-person households¹³ ~50% in Sweden compared to ~30% in the UK) give some mechanistic underpinning to genuine differences in R_0 .

While heterogeneities in population density, age distribution and infection seeding are captured in the R_0 values of each country (which are unchanged in each counterfactual scenario), both the relative and absolute approaches implicitly assume that the populations of each country would respond in the same way to each set of interventions. This is unlikely to be completely valid, for example due to differences in the above factors, in household size distribution or in the willingness to adopt social distancing measures. Therefore our counterfactual scenarios should be interpreted as an exchange of both population behaviour and government policy between donor and recipient countries. Our analysis does not depend on the relative contributions of population behaviour or government action to a given policy's success or failure.

Our analysis makes no assumptions about the mechanism of interventions, the relative contribution of individual measures, or the extent to which reductions in transmission were driven by spontaneous behaviour change rather than mandatory rules. Results are also robust to different infection fatality ratio estimates (Supplementary Material section S6). There are a number of technical limitations. First, as noted above estimates of the basic reproduction number R_0 are intrinsically confounded with estimates of infection seeding in each country, leading to uncertainty in R_0 estimates. Second, we estimate changes in transmission rates, R_t , from the incidence of deaths. While our analysis uses a large dataset (Fig. S1) to estimate the onset to death delay distribution, the high variance of this distribution leads to high uncertainty in R_t estimates (Fig. S3), even when only estimating weekly mean R_t values. This uncertainty could theoretically be reduced using laboratory-confirmed case incidence data. However, variation in testing criteria and capacity between countries and over time make trends in case incidence harder to interpret reliably than trends in deaths. Third, national-level R_t estimates average over a high level of geographic, social and demographic heterogeneity in transmission within each country. It is unclear how such heterogeneities between countries would determine the relative success of a country's COVID-19 response, as opposed to differences in policy. This can be circumvented to some extent by interpreting each counterfactual scenario as an exchange of population behaviour as well as policy, although it is still true that not every country would respond in exactly the same way to each intervention.

Our aim has been to compare the responses of different countries to their first wave of the COVID-19 pandemic, so that we might learn how best to control future waves, or indeed future pandemics. It is important to stress that we have had the benefit of hindsight, and considerably more is known about the virus than was known at the beginning of the pandemic. Decision-makers in every country had the near-impossible task of choosing to enact or refrain from a range of policy options, each of which could benefit or harm different sections of their societies in different ways, during a rapidly unfolding global pandemic. In addition, uncertainty in the lethality, morbidity and transmissibility of SARS-CoV-2 was considerably greater than is now the case.

Our key conclusion is that under conditions of high growth and high infection prevalence, small differences in the timing and effectiveness of control strategies have dramatic effects on the resulting numbers of cases and deaths. Implementation of prompt and effective interventions minimised mortality. Denmark saw low mortality because it reacted early with highly effective interventions at a time of relatively low infection prevalence. The much higher mortality seen in the UK and Sweden occurred for different reasons. In Sweden, despite conditions that were initially more favourable, higher mortality resulted from interventions bringing R_t to below 1 less quickly than was achieved elsewhere. The UK suffered because its epidemic had progressed further than in many countries by the time effective interventions were implemented. For the same reason it is also true that even if the UK had intervened at the same time as Denmark, its mortality would have exceeded Denmark's. These conclusions hold lessons for management of current increases in transmission being seen across Europe.

Data availability

All models are fitted using the R package Epidemia available at <https://imperialcollegelondon.github.io/epidemia>¹⁴. Full source code and raw data used in this study can be found online at GitHub link <https://github.com/ImperialCollegeLondon/covid19model/tree/whatif/whatif>. Official counts of laboratory-confirmed deaths by date of death for the UK was obtained from the UK government dashboard¹⁵, for Sweden via the Public Health Agency of Sweden (Folkhälsomyndigheten)¹⁶ and for Denmark from the State Serum Institute (Statens Serum Institut)¹⁷.

Received: 31 March 2021; Accepted: 27 July 2021

Published online: 11 August 2021

References

1. Twyman, J. Getting it right: YouGov and online survey research in Britain (2008).
2. Aktay, A. *et al.* Google COVID-19 community mobility reports: Anonymization process description (version 1.0). [arXiv:abs/2004.02004](https://arxiv.org/abs/2004.02004) (2020).
3. Hale, T., Petherick, A., Phillips, T., Webster, S. & Kira, B. Oxford COVID-19 government response tracker, blavatnik school of government. *Working Paper* (2020).
4. Flaxman, S. *et al.* Estimating the effects of non-pharmaceutical interventions on COVID-19 in Europe. *Nature* **584**, 257–261 (2020).
5. Pybus, O., Rambaut, A., COG-UK-Consortium & Others. Preliminary analysis of SARS-CoV-2 importation & establishment of UK transmission lineages. *Virological.org* (2020).
6. Chowell, G., Sattenspiel, L., Bansal, S. & Viboud, C. Mathematical models to characterize early epidemic growth: A review. *Phys. Life Rev.* **18**, 66–97 (2016).
7. Olagnier, D. & Mogensen, T. H. The COVID-19 pandemic in Denmark: Big lessons from a small country. *Cytokine Growth Factor Rev.* **53**, 10–12 (2020).
8. Hsiang, S. *et al.* The effect of large-scale anti-contagion policies on the COVID-19 pandemic. *Nature* **584**, 262–267 (2020).
9. Cousins, S. New Zealand eliminates COVID-19. *Lancet* **395**, 1474 (2020).

10. Baker, M. G., Wilson, N. & Anglemeyer, A. Successful elimination of COVID-19 transmission in New Zealand. *N. Engl. J. Med.* **383**, e56 (2020).
11. Okell, L. C. *et al.* Have deaths from COVID-19 in Europe plateaued due to herd immunity?. *Lancet* **395**, e110–e111 (2020).
12. Eurofound. Societal change and trust in institutions (2018).
13. Household composition statistics. [Online; accessed 21. Jun. 2021]. (2021).
14. Scott, J. A. *et al.* Epidemia: Modeling of epidemics using hierarchical bayesian models (2020). R package version 0.6.0.
15. Coronavirus (COVID-19) in the UK: UK Summary. [Online (2020)].
16. FOHM Covid-19. (2021, July 05). Retrieved from https://experience.arcgis.com/experience/09f821667ce64bf7be6f9f87457ed9aa/page/page_0
17. S.S.I.U.M Covid-19. (2021, August 01). Retrieved from <https://www.ssi.dk/aktuelt/sygdomsudbrud/coronavirus>

Acknowledgements

We would like to thank the COVID-19 Hospitalisation in England Surveillance System (CHES) team at Public Health England for their work in collecting the onset-to-death delay data used here. We would like to thank a generous donation of compute time on the Azure cloud from Microsoft that facilitated this analysis. DJL, NMF acknowledge funding from Vaccine Efficacy Evaluation for Priority Emerging Diseases (VEEPED) grant, (ref. NIHR: PR-OD-1017-20002) from the National Institute for Health Research. SB would like to acknowledge the NIHR BRC Imperial College NHS Trust Infection and COVID themes the Academy of Medical Sciences Springboard award and the Bill and Melinda Gates Foundation. This work was supported by Centre funding from the UK Medical Research Council under a concordat with the UK Foreign, Commonwealth and Development Office, the NIHR Health Protection Research Unit in Modelling and Health Economics, the NIHR Health Protection Research Unit in Emerging and Zoonotic Infections and by a philanthropic grant from Community Jameel.

Author contributions

N.M.F. and S.B. conceived and designed the paper. S.M. and J.S. wrote and designed the code base. S.M., S.F., J.S., S.B., A.G. and N.M.F. performed experiments. T.M. assisted in the onset-to-death analysis. S.B., D.J.L., N.M.F. and S.F. wrote the original draft. All authors contributed to editing the draft.

Competing interests

The authors declare no competing interests.

Additional information

Supplementary Information The online version contains supplementary material available at <https://doi.org/10.1038/s41598-021-95699-9>.

Correspondence and requests for materials should be addressed to S.M. or N.M.F.

Reprints and permissions information is available at www.nature.com/reprints.

Publisher's note Springer Nature remains neutral with regard to jurisdictional claims in published maps and institutional affiliations.



Open Access This article is licensed under a Creative Commons Attribution 4.0 International License, which permits use, sharing, adaptation, distribution and reproduction in any medium or format, as long as you give appropriate credit to the original author(s) and the source, provide a link to the Creative Commons licence, and indicate if changes were made. The images or other third party material in this article are included in the article's Creative Commons licence, unless indicated otherwise in a credit line to the material. If material is not included in the article's Creative Commons licence and your intended use is not permitted by statutory regulation or exceeds the permitted use, you will need to obtain permission directly from the copyright holder. To view a copy of this licence, visit <http://creativecommons.org/licenses/by/4.0/>.

© The Author(s) 2021