



The impact of postoperative cerebrospinal fluid drainage on neurological improvement following thoracic aortic and thoracoabdominal aortic surgery

Tomohiro Nakajima[^], Yutaka Iba, Tsuyoshi Shibata, Shingo Tsushima, Ayaka Arihara, Itaru Hosaka, Akihito Okawa, Junji Nakazawa, Nobuyoshi Kawaharada

Department of Cardiovascular Surgery, Sapporo Medical University School of Medicine, Sapporo, Japan

Contributions: (I) Conception and design: T Nakajima, N Kawaharada; (II) Administrative support: Y Iba, T Shibata; (III) Provision of study materials or patients: S Tsushima, A Arihara; (IV) Collection and assembly of data: I Hosaka, A Okawa; (V) Data analysis and interpretation: J Nakazawa; (VI) Manuscript writing: All authors; (VII) Final approval of manuscript: All authors.

Correspondence to: Tomohiro Nakajima, MD. Department of Cardiovascular Surgery, Sapporo Medical University School of Medicine, South-1, West-16, Chuo-ku, Sapporo 060-8543, Japan. Email: t.nakajima@sapmed.ac.jp.

Background: Various preventive measures and treatment methods exist to prevent paraplegia during thoracic aortic surgery. Postoperative cerebrospinal fluid drainage (CSFD) is one of the treatment options when paraplegia occurs. This study aimed to evaluate the neurological efficacy of postoperative CSFD in patients undergoing thoracic aortic and thoracoabdominal aortic surgery.

Methods: We analyzed perioperative data from 85 patients who underwent perioperative CSFD for thoracic and thoracoabdominal aortic surgery between January 2006 and December 2022, focusing on neurological changes. A total of 61 patients (72%) received preoperative CSFD, and 24 patients (28%) received postoperative CSFD. Perioperative neurological data were analyzed with a focus on perioperative changes.

Results: In the postoperative CSFD group, the manual muscle test (MMT) score before CSFD was 0.8, that just after CSFD was 2.4, and that at discharge was 3.0. Therefore, postoperative CSFD improved MMT scores compared with preoperative CSFD. The mean time between surgery completion and postoperative CSFD implantation was 9.8 hours. However, 6 (25%) of the patients who developed postoperative paraplegia and underwent early postoperative CSFD remained paraplegic without any improvement. In the preoperative CSFD group, there was only one case (2%) of postoperative paraplegia.

Conclusions: Postoperative CSFD improved the neurological prognosis of individuals undergoing thoracic aortic and thoracoabdominal aortic surgery. However, 25% of the patients remained paraplegic despite postoperative CSFD.

Keywords: Cerebrospinal fluid drainage (CSFD); spinal cord injury; paraplegia

Submitted Apr 15, 2023. Accepted for publication Aug 11, 2023. Published online Sep 04, 2023.

doi: 10.21037/jtd-23-631

View this article at: <https://dx.doi.org/10.21037/jtd-23-631>

Introduction

Paraplegia is a major complication in the treatment of thoracic and thoracoabdominal aortic aneurysms. The incidence of paraplegia following thoracic descending aortic

aneurysm repair has been reported to be 10–25% (1).

Paraplegia severely compromises the patient's quality of life, and often leads to death from nonvascular causes (2). To avoid paraplegia, surgeons have used a variety of techniques,

[^] ORCID: 0000-0001-8727-4212.

including preoperative identification of the Adamkiewicz artery (AKA), intraoperative detection of decreased spinal cord perfusion using intercostal artery perfusion, intercostal artery reconstruction, and motor evoked potentials (MEP), as well as postoperative methods for increasing oxygen delivery to the spinal cord based on COPS [cerebrospinal fluid drainage (CSFD), oxygen delivery, and patients status (COPS)] treatment. Although the incidence of paraplegia has declined in recent years, it is still a serious complication (3). Recently, the incidence of paraplegia was found to be higher in patients with a history of vascular surgical disease because of the lack of a collateral source of blood flow to the spinal cord, which has a large network (4). Thus, many factors are involved in the development of surgically induced paraplegia, and little is known about how to reduce the rate of this outcome (5). In this study, we analyzed the effectiveness of CSFD in preventing paraplegia. We retrospectively evaluated the neurological recovery of patients who underwent CSFD after thoracic aortic or thoracoabdominal aortic aneurysm surgery and determined which individuals developed symptoms of paraplegia. We also considered complications of CSFD, as well as short-term/long-term life expectancy. This study aimed the comparison between preoperative and postoperative CSFD. We present this article in accordance with the STROBE reporting checklist (available at <https://jtd.amegroups.com/article/view/10.21037/jtd-23-631/rc>).

Methods

Study population

Data were collected from hospital admission medical

records. All patients had been followed up as outpatients at our medical center. We reviewed data from a total of 1,035 patients who underwent surgery, including graft replacement (GR) and thoracic endovascular aortic repair (TEVAR) for thoracic aorta or thoracoabdominal aorta, between January 2006 and December 2022. Of the total study population, 85 patients underwent CSFD around the time of surgery (*Figure 1*). There were 61 preoperative CSFD patients and 24 postoperative CSFD patients. Sufficient data for analyses were available from 85 patients. The study was conducted in accordance with the Declaration of Helsinki (as revised in 2013). The study protocol was approved by the Committee on Ethics of Medicine of Sapporo Medical University (No. 352-14). Written informed consent was collected from all the subjects participating in the study.

Procedure for thoracic aortic aneurysm (TAA) and thoracoabdominal aortic aneurysm (TAAA)

Patient selection for GR or TEVAR was dependent on a number of factors, such as age, comorbidities, the surgeon's decision, device availability, and anatomical suitability. In this series, GR was performed in 61 patients (72%), and TEVAR was performed in 24 patients (28%). Cases were elective for 76 patients (89%) and emergent for nine patients (11%).

The evaluation of spinal cord insufficiency (SCI) and major morbidities

In all cases, the patients were evaluated by our team immediately after the identification of suspected SCI. The degree of SCI was classified according to the manual muscle test (MMT).

Prophylactic strategy for paraplegia/paraparesis

The AKA was identified preoperatively via contrast-enhanced computed tomography (CT), except in emergency cases. In all open thoracotomy procedures, the MEP was used to immediately detect spinal cord ischemia, regardless of whether the AKA was included in the scope of replacement. When the AKA was included in the replacement area, prophylactic preoperative CSFD was initiated on the day before surgery, and the AKA was selectively perfused during surgery to reconstruct the artificial vessel. CSFD was started immediately after anastomosis. The drainage was adjusted so that the cerebrospinal fluid (CSF) pressure did not exceed

Highlight box

Key findings

- Postoperative cerebrospinal fluid drainage (CSFD) improved neurological prognosis after thoracic aortic and thoracoabdominal aortic surgery.

What is known and what is new?

- It is unclear how effective postoperative CSFD for thoracic aortic and thoracoabdominal aortic surgery is in terms of neurological
- A patient who developed postoperative paraplegia/paraparesis showed neurological improvement with postoperative CSFD

What is the implication, and what should change now?

- Postoperative CSFD showed neurological improvement, while a group of patients did not respond at all. Management of this group of patients needs to be considered.

Table 1 Demographics and comorbidities

Variables	Overall (n=85)
Age (years)	56.7±12.3
Male	69 [81]
Body surface area (m ²)	1.71±0.19
Hypertension	70 [82]
Dyslipidemia	11 [13]
Diabetes mellitus	11 [13]
Smoking	56 [66]
Connective tissue disease	7 [8]
Coronary artery disease	13 [15]
Chronic obstructive pulmonary disease	4 [5]
Peripheral artery disease	8 [9]
Chronic kidney disease	36 [42]
Prior cerebrovascular event	10 [12]
Prior cardiovascular event	52 [61]
Prior ascending aortic surgery	19 [22]
Prior distal aortic repair	2 [2]
Prior endovascular DTA repair	2 [2]
Prior open/endovascular abdominal aortic repair	13 [15]
Prior open/endovascular TAAA repair	4 [5]
Prior aortic dissection episode	34 [40]
Logistic EuroSCORE	8.4±6.4

Categorical data are presented as number [%] and continuous data as mean ± standard deviation. DTA, descending thoracic aorta; TAAA, thoraco-abdominal aortic aneurysm.

12 cmH₂O based on the height of the right atrium. When the drainage volume exceeded 30 mL/1 hour, the height was adjusted to raise the CSF pressure by 2 cmH₂O. Conversely, when the drainage volume was low, the CSF pressure was lowered by 2 cmH₂O and the minimum value was set at 6 cmH₂O. The drainage tube was removed at 48 hours postoperatively, and CSFD was not conducted preoperatively in TEVAR patients, regardless of whether the AKA was included in the treatment area. Preoperative CSFD was not placed in the TEVAR group because of the minimally invasive nature of stent grafting and the lower incidence of paraplegia compared with artificial vessel replacement, according to previous reports. Postoperative CSFD was initiated at the onset of postoperative paraplegia,

with a management protocol that was the same as that for artificial vessel replacement. In all patients, the systolic blood pressure was consistently kept above 140 mmHg, the hemoglobin (Hb) was kept above 10 mg/dL, and the cardiac index (CI) was kept above 2.5 L/min/body surface area (BSA).

Statistical analysis

Continuous variables were reported as the means ± standard deviation. The categorical variables in the tables were presented as raw numbers (percentages). The categorical variables were compared using the χ^2 and Fisher's exact tests. We used the Kaplan-Meier method to assess the intermediate and long-term factors associated with patient survival. All calculations were performed using JMP version 16 (SAS Institute, Inc., Cary, NC, USA).

Results

Patient characteristics

In this study, a total of 1,035 patients underwent open or endovascular surgery (*Table 1*). Of these, 85 patients underwent CSFD. The patient preoperative characteristics and demographics are shown in *Table 1*. We performed a total of 85 consecutive CSFD procedures from 2015 to 2022. The mean patient age at the time of CSFD was 56.7±12.3 years. The majority of the patients were male (81%), and 82% of all of the patients had systemic hypertension. Smoking was recorded in 66% of the patients, and connective tissue disease was found in 8%, chronic kidney disease in 42%, and prior cardiovascular events in 61% of the patients. The logistic EuroSCORE was 8.4±6.4.

Procedure characteristics

The procedure characteristics are shown in *Table 2*. In terms of indications for surgery and prior history, degenerative aneurysm was recorded in 50%, acute dissection in 5%, chronic dissection in 40%, and rupture in 5% of the patients. The surgery was elective in 89% of the patients, and urgent in 11% of the sample. An open repair surgery was conducted in 72% of the patients and an endovascular repair was performed in 28% of the patients. Range of aortic repair was shown in *Table 2*. The mean operation time for the open repair procedure was 551 min, while that for the endovascular repair was 159 min. The CSFD was preoperative in 72% and postoperative in 28% of the

Table 2 Procedure characteristics

Variables	Overall (n=85)
Indications for surgery and prior history	
Degenerative aneurysm	43 [50]
Acute dissection	4 [5]
Chronic dissection	34 [40]
Rupture	4 [5]
Urgency	
Elective	76 [89]
Emergent	9 [11]
Procedure	
Open repair	61 [72]
Endovascular repair	24 [28]
Range of aortic repair	
Ascending to total arch	7 [8]
Descending aorta	35 [41]
Crawford I	4 [5]
Crawford II	6 [7]
Crawford III	20 [24]
Crawford IV	13 [15]
Operation time of open repair (min)	
CPB time of open repair (min)	198±11
Operation time of endovascular repair (min)	
	159±35
Timing of CSFD	
Preoperative CSFD	61 [72]
Postoperative CSFD	24 [28]
Time from end of surgery to detect paraplegia/paraparesis (hours)	
	9.8±1.2

Categorical data are presented as number [%] and continuous data as mean ± standard deviation. CPB cardiopulmonary bypass; CSFD, cerebrospinal fluid drainage.

patients. For patients who underwent postoperative CSFD, the time from the end of the surgery to the detection of paraplegia/paraparesis was 9.8 hours.

Postoperative outcomes

After the surgery, the rate of in-hospital death was 7%, that of transfer to the hospital was 19%, and discharge

by foot was 74%. The mean number of days spent in the hospital was 25. At discharge, paraplegia was present in 8%, paraparesis in 13%, and major complications related to CSFD (cerebral bleeding or infection) in 2% of all patients.

Patients with paraplegia/paraparesis who were ineligible for CSFD

As shown in *Figure 1*, there were 950 patients who did not undergo CSFD. Among these patients, 20 were not eligible for CSFD, and developed paraplegia/paraparesis for various other reasons, including active bleeding after surgery, delayed awakening caused delayed judgment of paralysis, and cerebral stroke. In these 20 cases, 19 patients developed paraplegia and one patient developed paraparesis.

Effects of postoperative CSFD

In this sample, 24 patients underwent postoperative CSFD to treat paraplegia/paraparesis. *Figure 2* shows box-and-whisker plots of the mean MMT scores of the postoperative CSFD group, measured before initiation of CSFD, just after CSFD, and at discharge. The mean MMT score before CSFD was 0.8, just after CSFD was 2.4, and at discharge was 3.0. Therefore, postoperative CSFD was associated with higher MMT scores compared with preoperative CSFD. We divided patients into two groups, no preoperative and postoperative CSFD and No preoperative CSFD and Postoperative CSFD done who were all diagnosed as paraplegia. The results are shown in *Table 3*. Of 27 patients who developed paraplegia, 13 remained paraplegia without CSFD. In contrast, of the 14 patients who underwent postoperative CSFD, 4 showed a slight recovery of MMT, but 10 remained paraplegia.

Survival in patients who underwent postoperative CSFD

Figure 3 shows the survival curve for all-cause mortality in patients who underwent postoperative CSFD (n=24). We compared the paraplegia and no paraplegia groups using the Log-rank test, $P < 0.01$. The 5-year survival rate was 0% in the paraplegia group and 55% in the no paraplegia group.

Survival in patients who underwent preoperative versus postoperative CSFD

Figure 4 shows the survival curve for all-cause mortality in patients who underwent preoperative CSFD (n=61) and

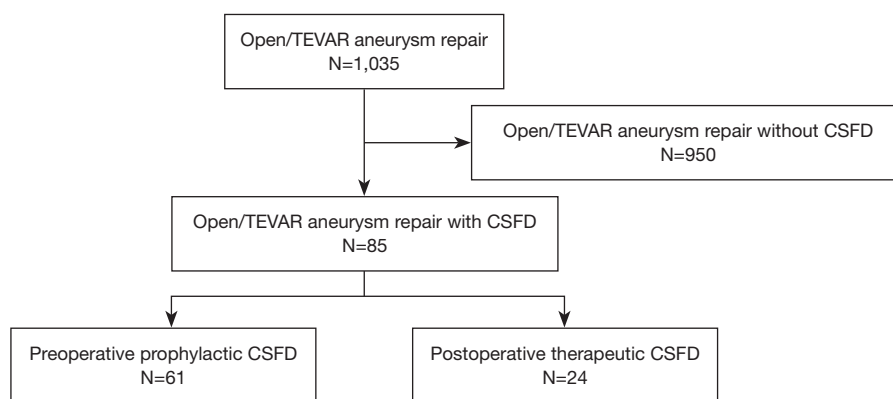


Figure 1 Diagram showing CSFD use in open or TEVAR aneurysm repair. TEVAR, thoracic endovascular aortic repair; CSFD, cerebrospinal fluid drainage.

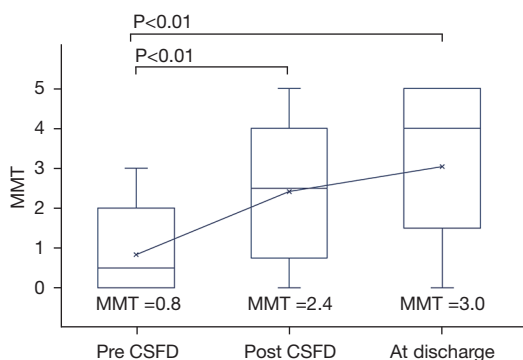


Figure 2 Box-and-whisker plots showing mean results of the MMT in the postoperative CSFD group. Data were collected before initiation of CSFD, just after CSFD, and at discharge. The mean MMT was improved just after CSFD and at discharge compared with pre-CSFD ($P < 0.01$). The horizontal line in the middle of each box indicates the median; the top and bottom borders of the box mark the 75th and 25th percentiles, respectively; the whiskers mark the minimum and maximum values. MMT, manual muscle test; CSFD, cerebrospinal fluid drainage.

postoperative CSFD ($n=24$). We compared the preoperative CSFD group with the postoperative CSFD group using the Log-rank test, $P=0.57$. The 5-year survival rate was 55% in the preoperative CSFD group versus 52% in the postoperative CSFD group. Postoperative outcomes were shown in *Table 4*.

Discussion

SCI is a serious complication of open aortic surgery and

TEVAR, and has been reported to occur in 20% of open thoracic aortic surgeries (6). Various strategies have been devised to reduce SCI, including CSFD, cooling, intercostal vessel reimplantation, and elevated mean arterial pressure (MAP) during open thoracic surgery. Many studies have suggested that there exists a relationship between CSFD during thoracic aortic repair and the development of SCI. The rationale for CSFD is that the spinal cord perfusion pressure is the difference between the MAP and CSF pressure (7).

COPS treatment was introduced for use during thoracoabdominal aortic aneurysm surgery, as reported by Estrera *et al.* Although CSFD is invasive, it is not difficult to achieve good oxygenation and high patient arterial pressure. If other treatments play a significant role in the prevention of SCI, it may be possible to avoid invasive CSFD (5).

The use of CSFD prophylactically during aortic laparotomy is controversial, and many studies have focused on this topic. For instance, Coselli *et al.* conducted a large randomized trial, and showed a significant reduction in SCI with CSFD (13% versus 2.6%, $P=0.03$) (8). The benefit of prophylactic CSFD in open aortic surgery has also been established via a meta-analysis (9). Indeed, many reports have examined the use of preoperative CSFD, with acceptable results. However, complications such as cerebral hemorrhage and infection have been reported, indicating that CSFD should be avoided unless necessary (10). If postoperative CSFD is as effective as preoperative CSFD, then postoperative CSFD should be prioritized. This would limit the use of preoperative CSFD to high-risk cases. To examine the plausibility of this suggestion, we examined the effectiveness of postoperative CSFD.

Table 3 MMT transition diagnosed paraplegia just after operation

Variables	No preoperative and postoperative CSFD (n=13)	No preoperative CSFD and postoperative CSFD done (n=14)
Preoperative MMT	5	5
Just after operation MMT	0	0
At discharge MMT	0	0.57 [0–2]

Continuous data are shown as mean [range]. MMT, manual muscle test; CSFD, cerebrospinal fluid drainage.

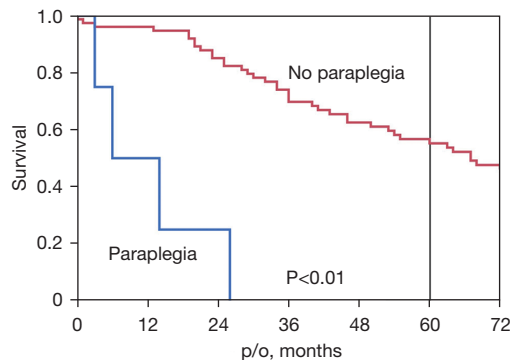


Figure 3 Survival curve for all-cause mortality after surgery with postoperative CSFD (n=24). The paraplegia group was compared with the no paraplegia group. Log-rank, $P<0.01$. The 5-year survival rate was 0% in the paraplegia group and 55% in the no paraplegia group. p/o, post operative; CSFD, cerebrospinal fluid drainage.

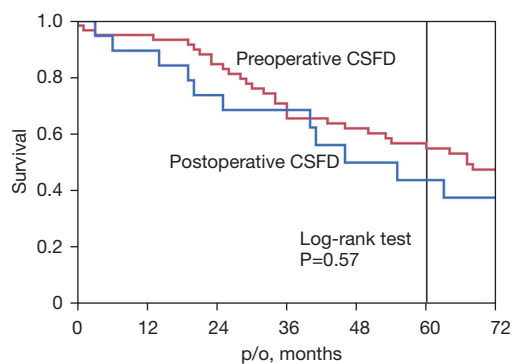


Figure 4 Survival curve for all-cause mortality after surgery with preoperative CSFD (n=61) and postoperative CSFD (n=24). The preoperative CSFD group was compared with the postoperative CSFD group. Log-rank, $P=0.57$. The 5-year survival rate was 55% in the preoperative CSFD group and 52% in the postoperative CSFD group. p/o, postoperative; CSFD, cerebrospinal fluid drainage.

Table 4 Postoperative outcomes

Variables	Overall (n=85)
In-hospital death	6 [7]
Transfer to hospital	16 [19]
Discharge by foot	63 [74]
In-hospital days	25 [18–42]
Paraplegia at discharge	7 [8]
Paraparesis at discharge	11 [13]
Major complications with CSFD (cerebral bleeding or infection)	2 [2]

Categorical data are presented as number [%] and continuous data as mean [range]. CSFD, cerebrospinal fluid drainage.

In this study, we examined data from 1,035 patients who underwent open thoracic replacement or stent grafting, 85 (8%) of whom had undergone CSFD implantation. Among the CSFD implantation patients, 61 (72%) underwent preoperative CSFD and 24 (28%) underwent postoperative CSFD. Patient background data are shown in *Table 1*. The prevalence of connective tissue disease and chronic kidney disease was 8% and 40%, respectively. Characteristically, 61% of the patients had experienced a previous cardiovascular event.

Indications for surgery and prior history included 43 cases of degenerative aneurysm (50%) and 34 cases of chronic dissection (40%). Most of the cases in this series (76 cases, 89%) underwent elective surgery.

In 24 cases of postoperative CSFD, the MMT score was significantly improved, as shown in *Table 2*. Of the 24 postoperative CSFD patients, 13 underwent open surgery and 11 underwent TEVAR. However, six patients remained paraplegic postoperatively after CSFD. Five of the six patients underwent open surgery, and one patient

underwent TEVAR. In other words, 5 of 13 open cases (38%) who developed paraplegic symptoms remained paraplegic postoperatively, while only 1 of 11 TEVAR cases (9%) remained paraplegic ($P=0.10$). All six patients who underwent open surgery had the AKA in the treatment range and had undergone previous abdominal aortic vascular surgery. There were no major complications related to postoperative CSFD. In this series, there were 20 cases in which CSFD was not performed because of delayed postoperative arousal or excessive postoperative bleeding, although CSFD was originally considered necessary because of paraplegia. Of these patients, 19 developed paraplegia, and the remaining patient had incomplete paraplegia. In contrast, only one patient (2%) in the preoperative CSFD group developed paraplegia, and major complications were a cerebral hemorrhage case and a sepsis case (11).

Figure 3 shows the survival curves for patients with and without paraplegia. The 5-year survival rate in the patients with paraplegia was 0%, which reaffirms the poor prognosis of this patient group (8). *Figure 4* shows the survival curves for the patients who underwent preoperative versus postoperative CSFD. There was no difference in survival between the two groups, although there was a difference in the incidence of paraplegia. In other words, postoperative CSFD improved MMT scores and avoided paraplegia in both the open and TEVAR groups, with no significant difference. Furthermore, there was no significant difference in long-term survival between the preoperative and postoperative CSFD groups, indicating that similar long-term outcomes can be expected between the groups. The purpose of this study was to demonstrate the effectiveness of postoperative CSFD in patients with paraplegia, as shown in *Table 3*. As shown in *Figure 4*, the survival rate of patients treated with postoperative CSFD was unchanged compared with that of patients treated with preoperative CSFD, suggesting that CSFD is safe.

By confirming the effectiveness of postoperative CSFD, we thought it would be possible to examine its effectiveness in comparison with preoperative CSFD cases. We examined the efficacy of 61 CSFD cases introduced preoperatively in this study and found only one case of paraplegia. In contrast, 6 of 24 postoperative CSFD patients (25%) remained paraplegic, as described above. In light of the above, postoperative CSFD may be considered ineffective, but it may have improved the 75% of patients who would likely have become paraplegic without the introduction of CSFD. The MMT outcomes of the 24 patients who underwent postoperative CSFD were followed closely and

are considered scientifically credible.

In the future, we hope to compare data from patients who underwent preoperative versus postoperative CSFD, after matching for other variables via a randomized controlled trial (RCT) or propensity score matching (PSM). Patients who undergo other arterial surgeries before surgery are at high risk of paraplegia, and we hope to find a treatment other than CSFD or COPS to avoid paraplegia in this patient group.

Limitations

This was a single-center, retrospective study, and although all of the patients underwent CSFD implantation, the background of the patients was heterogeneous because of differences in the surgical procedures performed. However, the neurological evaluations of patients following CSFD implantation were conducted in a consistent manner. Because this was a retrospective study, it is not possible to determine whether preoperative CSFD is superior to postoperative CSFD after the onset of paraplegia symptoms. In the future, we hope to compare data from patients who underwent preoperative versus postoperative CSFD, after matching for other variables via a RCT or PSM. Patients who undergo other arterial surgeries before surgery are at high risk of paraplegia, and we hope to find a treatment other than CSFD or COPS to avoid paraplegia in this patient group.

Conclusions

We investigated the efficacy of postoperative CSFD in patients with paraplegia after thoracic and thoracoabdominal aortic aneurysm surgery at our hospital. To the best of our knowledge, this is the first study to examine the effect of postoperative CSFD on neurological prognosis. Postoperative CSFD contributed to the recovery of MMT score. CSFD should be inserted for postoperative SCI if the indicated conditions were met.

Acknowledgments

We thank Sydney Koke, MFA, from Edanz (<https://www.edanz.com/ac>) for editing a draft of this manuscript.

Funding: None.

Footnote

Reporting Checklist: The authors have completed the

STROBE reporting checklist. Available at <https://jtd.amegroups.com/article/view/10.21037/jtd-23-631/rc>

Data Sharing Statement: Available at <https://jtd.amegroups.com/article/view/10.21037/jtd-23-631/dss>

Peer Review File: Available at <https://jtd.amegroups.com/article/view/10.21037/jtd-23-631/prf>

Conflicts of Interest: All authors have completed the ICMJE uniform disclosure form (available at <https://jtd.amegroups.com/article/view/10.21037/jtd-23-631/coif>). The authors have no conflicts of interest to declare.

Ethical Statement: The authors are accountable for all aspects of the work in ensuring that questions related to the accuracy or integrity of any part of the work are appropriately investigated and resolved. The study was conducted in accordance with the Declaration of Helsinki (as revised in 2013). The study protocol was approved by the Committee on Ethics of Medicine of Sapporo Medical University (No. 352-14). Written informed consent was collected from all the subjects participating in the study.

Open Access Statement: This is an Open Access article distributed in accordance with the Creative Commons Attribution-NonCommercial-NoDerivs 4.0 International License (CC BY-NC-ND 4.0), which permits the non-commercial replication and distribution of the article with the strict proviso that no changes or edits are made and the original work is properly cited (including links to both the formal publication through the relevant DOI and the license). See: <https://creativecommons.org/licenses/by-nc-nd/4.0/>.

References

1. Estrera AL, Miller CC 3rd, Huynh TT, et al. Preoperative and operative predictors of delayed neurologic deficit following repair of thoracoabdominal aortic aneurysm. *J Thorac Cardiovasc Surg* 2003;126:1288-94.
2. Aucoin VJ, Bolaji B, Novak Z, et al. Trends in the use of cerebrospinal drains and outcomes related to spinal cord ischemia after thoracic endovascular aortic repair and complex endovascular aortic repair in the Vascular Quality Initiative database. *J Vasc Surg* 2021;74:1067-78.
3. Abdelbaky M, Papanikolaou D, Zafar MA, et al. Safety of perioperative cerebrospinal fluid drain as a protective strategy during descending and thoracoabdominal open aortic repair. *JTCVS Tech* 2021;6:1-8.
4. Kawaharada N, Ito T, Koyanagi T, et al. Spinal cord protection with selective spinal perfusion during descending thoracic and thoracoabdominal aortic surgery. *Interact Cardiovasc Thorac Surg* 2010;10:986-91.
5. Estrera AL, Sheinbaum R, Miller CC 3rd, et al. Neuromonitor-guided repair of thoracoabdominal aortic aneurysms. *J Thorac Cardiovasc Surg* 2010;140:S131-5; discussion S142-6.
6. Wong CS, Healy D, Canning C, et al. A systematic review of spinal cord injury and cerebrospinal fluid drainage after thoracic aortic endografting. *J Vasc Surg* 2012;56:1438-47.
7. Acher C, Acher CW, Marks E, et al. Intraoperative neuroprotective interventions prevent spinal cord ischemia and injury in thoracic endovascular aortic repair. *J Vasc Surg* 2016;63:1458-65.
8. Coselli JS, Green SY, Price MD, et al. Spinal cord deficit after 1114 extent II open thoracoabdominal aortic aneurysm repairs. *J Thorac Cardiovasc Surg* 2020;159:1-13.
9. Cinà CS, Abouzahr L, Arena GO, et al. Cerebrospinal fluid drainage to prevent paraplegia during thoracic and thoracoabdominal aortic aneurysm surgery: a systematic review and meta-analysis. *J Vasc Surg* 2004;40:36-44.
10. Kärkkäinen JM, Cirillo-Penn NC, Sen I, et al. Cerebrospinal fluid drainage complications during first stage and completion fenestrated-branched endovascular aortic repair. *J Vasc Surg* 2020;71:1109-18.e2.
11. Song S, Song SW, Kim TH, et al. Effects of preemptive cerebrospinal fluid drainage on spinal cord protection during thoracic endovascular aortic repair. *J Thorac Dis* 2017;9:2404-12.

Cite this article as: Nakajima T, Iba Y, Shibata T, Tsushima S, Arihara A, Hosaka I, Okawa A, Nakazawa J, Kawaharada N. The impact of postoperative cerebrospinal fluid drainage on neurological improvement following thoracic aortic and thoracoabdominal aortic surgery. *J Thorac Dis* 2023;15(9):4787-4794. doi: 10.21037/jtd-23-631