



Case report

Primary liver carcinoid tumour with a Zollinger Ellison syndrome - an unusual diagnosis: a case report

Gabriela Rascarachi^{1*}, Mónica Sierra¹, Mercedes Hernando², Rubén Diez¹,
Laura Arias¹, Francisco Jorquera^{1,3}, Santiago Vivas^{1,3} and José Luis Olcoz^{1,3}

Addresses: ¹Gastroenterology Unit, Complejo Hospitalario León, c/Altos de Nava s/n, 24071, León, Spain

²Pathology Department, Complejo Hospitalario León, c/Altos de Nava s/n, 24071, León, Spain

³Institute of Biomedicine, University of León, Campus Universitario, 24071, León, Spain

Email: GR* - grascarachi@gmail.com

* Corresponding author

Received: 5 March 2009 Accepted: 3 July 2009 Published: 7 August 2009

Cases Journal 2009, **2**:6346 doi: 10.4076/1757-1626-2-6346

This article is available from: <http://casesjournal.com/casesjournal/article/view/6346>

© 2009 Rascarachi et al.; licensee Cases Network Ltd.

This is an Open Access article distributed under the terms of the Creative Commons Attribution License (<http://creativecommons.org/licenses/by/3.0>), which permits unrestricted use, distribution, and reproduction in any medium, provided the original work is properly cited.

Abstract

Carcinoids are neuroendocrine tumours which may secrete hormones like gastrin, insulin, ACTH, etc. Liver is a common site for metastasis of carcinoid origin and an unusual site for a primary carcinoid tumour to arise.

We present the case of a 51-year-old Caucasian man with diarrhoea, weight loss, duodenum ulcers and a liver mass in ultrasonography. A primary hepatic carcinoid tumour with a Zollinger Ellison syndrome was diagnosed. Surgery resection was performed and the patient remained free of symptoms two years after, with normalisation of gastrin levels.

Primary hepatic carcinoid tumour represents an uncommon diagnosis, based on radiological and pathological features. The exclusion of different primary locations is necessary. Once associated with a Zollinger Ellison syndrome, diagnose may be more complicated and challenging since only 7 cases of hepatic carcinoids with gastrin secretion were reported in medical literature.

A review of medical literature is performed and diagnoses tools that should be used for an accurate diagnosis and available treatment approaches are commented here.

Introduction

Gastrin is predominantly produced by G cells of the gastric antrum and plays two major roles in the gastrointestinal physiology: (i) stimulation of gastric acid secretion and (ii) secondly as a trophic hormone for epithelial and enterochromaffin cells growth [1,2]. There are many causes of chronic gastrinemia and most of them are associated with gastrin secreting tumours (gastrinomas and gastrin secreting carcinoid tumours). Other causes are relationated

with high continuous antral pH (chronic atrophic gastritis, truncal vagotomy without antrectomy, chronic antisecretory treatment, etc). Gastrinomas are usually associated with the Zollinger Ellison syndrome (ZES) which is characterized by multiple peptic ulcers (most in the first portion of duodenum) and severe diarrhoea with inflammatory, osmotic or malabsorptive features due to the excessive acidification of the duodenum and the lower small bowel [2].

Carcinoid tumours are neoplasms derived from the neuroendocrine system and usually secrete hormones like gastrin, chromogranin A, serotonin, ACTH, insulin, etc. [3]. The majority arises within the gastrointestinal tract, mostly in the appendix and terminal ileum [3], few within other organs like bronchi. Liver is a common site for metastasis of carcinoid origin and an unusual site for a primary carcinoid tumour to arise.

Case presentation

A 51-year-old Caucasian man of Spanish nationality was admitted to our department for diarrhoea. The symptoms began 11 years ago and were intermittent and mostly nocturnal. He worsened 3 months before admission with exacerbation of number of deposition, abdominal pain and weight loss. He was on PPI therapy on demand and at high doses for pyrosis. He consumed no toxics. His medical history was irrelevant and his physical examination was unremarkable except for the presence of a mass in his left upper quadrant of abdomen. No palpable lymph nodes and no splenomegaly were found.

A complete blood count revealed mild leukocytosis (leukocytes 16,000, neutrophils 83%). Coagulation study and biochemistry tests including liver, kidney and thyroid gland function, iron metabolism and tumour markers presented no remarkable alterations. The reactive C protein was 42.7 mg/dl (normal: 0-5 mg/dl). Gastrin level was 114 ng/ml (normal: 13-115 ng/ml). Secretin induced test at 15 min was 322 ng/ml. VIP and 5-HIAA levels were normal. The stool exam was negative for bacterial and parasites.

Abdominal ultrasound revealed a liver mass in the 2nd and 3rd segment of a 10 x 8 cm diameter and small bowel distension. A helical computed tomography scan and a magnetic resonance imaging confirmed the liver mass with contrast uptake (Figure 1). The fine-needle aspiration

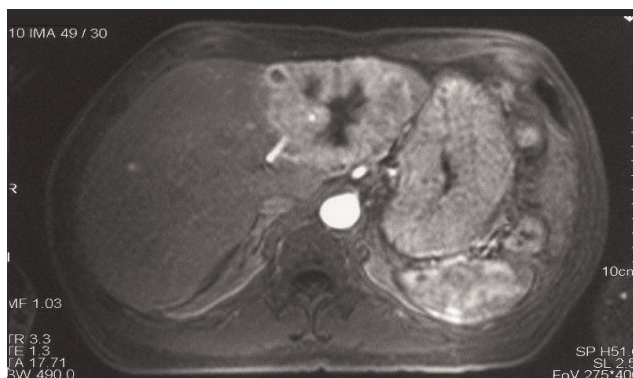


Figure 1. Axial section of MRI showing a left lobe liver mass with central necrosis and contrast uptake.

of the liver mass was informed as metastasis of an adenocarcinoma.

Upper endoscopy was performed and showed grade B (Los Angeles classification) esophagitis and gastritis as well as hypertrophy of the gastric folds and multiple duodenum ulcers with unspecific biopsy and H. Pylori negative. Barium intestinal study showed the same findings, without any small bowel lesions.

The gammagraphy with 111 In-DTPA octreotide showed pathologic uptake in the upper abdomen, especially at the jejunum wall, with high expression of serotonin receptors. A PET study was performed which showed high abnormal uptake in the liver mass as well as a diffuse uptake into the axils, small bowel wall and spleen. The study was completed by endoscopic capsule examination which did not reveal alterations at that level and with a complete colonoscopy without relevant findings. The echocardiography was normal.

A left hepatectomy was performed and the pathologic diagnosis pointed out to a primary neuroendocrine tumour (carcinoid tumour) with poor mitotic activity and important necrosis. Immunohistochemistry, on paraffin-embedded formalin fixed sections of the tumour, showed positive staining for synaptophysin, chromogranin, enolase, CK7 (Figure. 2a, 2b, 2c, 2d) and negative staining for CEA (Figure 3A). A moderate staining was detected for gastrin (Figure 3B).

During the follow up, the patient referred total disappearance of the initial clinical symptoms. Upper endoscopy revealed no duodenum ulcers and his serum gastrin levels decreased till 19 pg/ml two months after surgery.

The patient remained free of symptoms two years after surgery.

Discussion

We report here a case of a primary hepatic carcinoid tumour (PHCT) associated with a Zollinger Ellison syndrome. The primary hepatic carcinoid tumours are uncommon [3] and represent an intriguing diagnosis to solve. The demonstration of the hepatic origin of a neuroendocrine tumour is difficult since the liver is a frequent site for metastases of different types of tumours: intestinal carcinoids, primary tumours (hepatocarcinoma, etc) and benign pathology (nodular focal hyperplasia, etc).

Carcinoid tumours have their origin in neuroendocrine stem cells (known as enterochromaffin cells or APUD cells (Amine Precursor Uptake Decarboxilase) derived from the embryonic neuronal crest. Cells that migrated from the neuronal crest can give rise to gastrointestinal carcinoid

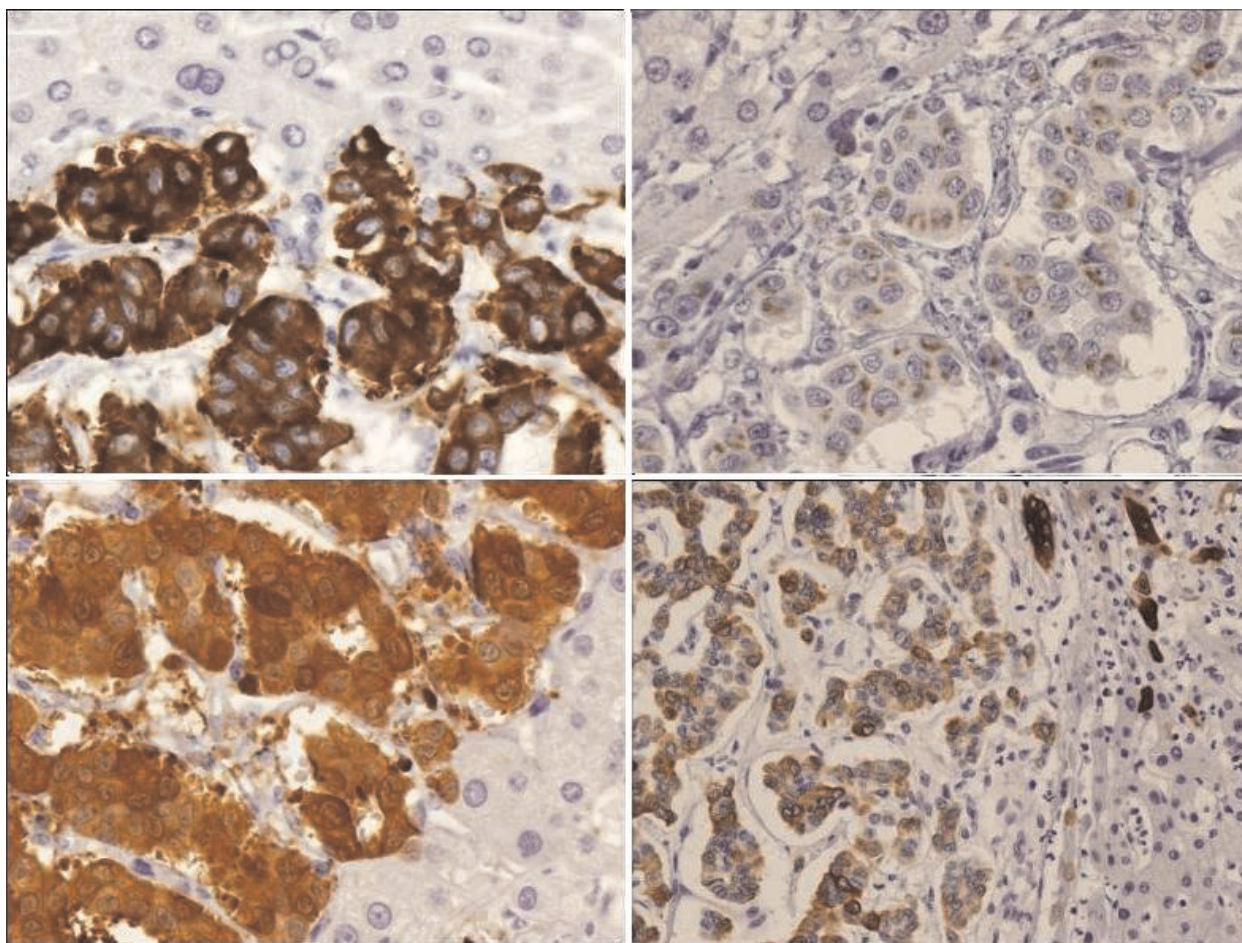


Figure 2. Immunohistochemical staining of the primary hepatic carcinoid tumour specimen. Positive staining for synaptophysin (a), chromogranin (b), enolase (c) and cytokeratin 7 (d) in tumour sample and negative in normal liver parenchyma (synaptophysin, chromogranin, enolase $\times 400$, cytokeratin 7 $\times 200$).

tumours to foregut, midgut and hindgut, being the most common localization the appendix and the small bowel [4]. Liver has few or none enterochromaffin cells, unlike other organs (pancreas, for example).

Some theories for the origin of PHCTs have been proposed. The most accepted theories are: (i) ectopic cells of pancreatic or adrenal tissue, (ii) neuroectodermal origin cells, (iii) neuroendocrine programmed ectoblasts [5]. It is believed that, during the early stages of regeneration, the bile ducts epithelium displays neuroendocrine characteristics and cytoplasmatic chromogranin A expression, due to chronic inflammation [6].

In general, PHCT may vary in size, ranging from 1 cm to 20 cm [7] and their aspect is of a unique mass [3] completely separated from the surrounding liver tissue. Females tend to be affected more often than males (1.4:1)

and the age of presentation may range between 18 to 84 years, with an average of 50 years [3,8].

The clinical presentation is atypical, with symptoms like upper abdominal pain or discomfort like fullness, as well as diarrhoea or weight loss [3]. Only a small percent (7%-13%) of patients accuses symptoms of a typical carcinoid syndrome [3,7].

The radiology diagnosis has poor specificity as the appearance on ultrasound, CT or MRI is of a solid mass with cystic areas and hyperechoic or mixed pattern, with central or peripheral calcifications and fibrous scars. The majority are intense, hypervascularised tumours, which explains the contrast enhancement in ultrasound and CT images, in a similar fashion as the hepatocarcinoma. [9]. When diagnosing a neuroendocrine tumour, an octreoscan is always recommended since it may detect small metastatic

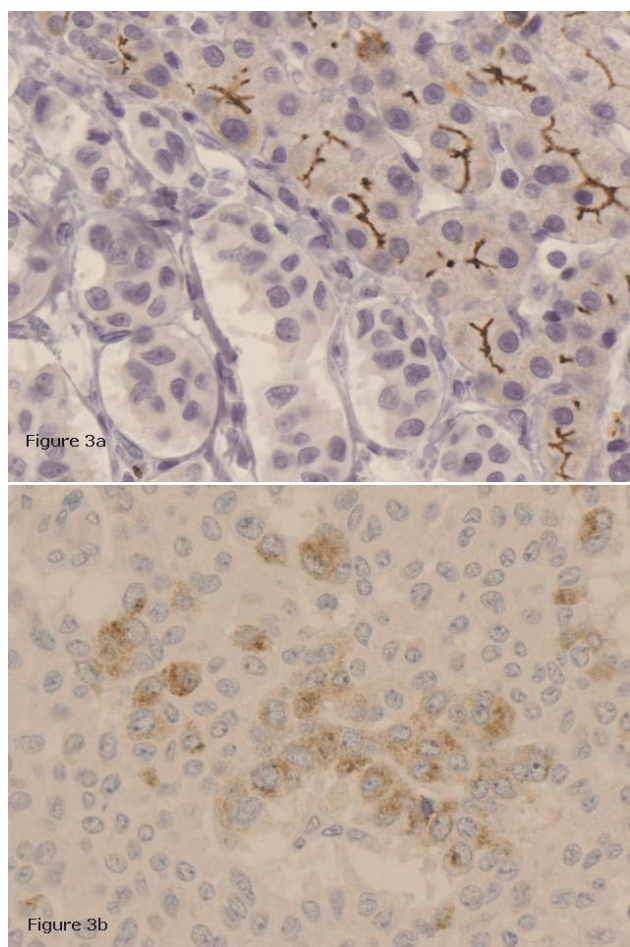


Figure 3. Immunohistochemical staining of the primary hepatic carcinoid tumour specimen. Panel (a) negative CEA staining in tumour sample and positive in normal liver parenchyma (CEA, $\times 200$). Panel (b) moderate gastrin staining in tumour sample (gastrin, $\times 400$).

deposits. PET scan may visualize somatostatin receptor type 2 lacking neuroendocrine tumours which are impossible to detect on somatostatin receptor scintigraphy.

The gold standard for diagnosis is the liver biopsy since it may differentiate the lesion from other types of tumours. Cautions must be taken in order to avoid complications like carcinoid crisis as a recent case report shows [10]. From the histologic point of view the hepatic carcinoma appears as a hemorrhagic, not capsulated mass, with central, irregular fibrosis and hyaline degeneration. The tumoural cells display an eosinophilic cytoplasm and irregular, hyperchromic nucleus. In immunohistochemistry these cells present a strong positivity for neurosecretory markers as chromogranin, synaptophysin, neuron specific enolase meanwhile markers as serotonin, pancreatic polypeptide or gastrin are inconsistently positive [8].

The treatment is the surgical resection, when possible. Almost 85% of primary hepatic carcinoid tumour patients may have a resectable disease [11,12]. Survival and recurrence rates five years after surgery are of 80-92.5% [8,13] and 18% respectively [14]. When a not well defined lesion is observed, a palliative cyto-reductive surgery in combination with transcatheter arterial embolization (TACE) and subsequent administration of lanreotide (long acting somatostatin analogue) might be effective, as Touloumis et al. showed recently [12].

In our patient's case, the immunohistochemistry result corresponded to a type A carcinoid tumour (APUDOMA). The moderate staining for gastrin pointed to gastrin secreting PHCT, associated thus with a Zollinger Ellison syndrome. In a recent review, gastrin was the most common hormone secreted of all cases (7/69) of primary hepatic carcinoid published till date [3].

Primary hepatic carcinoid tumours are rare entities that sometimes may be associated with syndromes like ZES, carcinoid, etc. induced by neuroendocrine hormones secretion (gastrin, 5-HIAA, ACTH; etc). An early and pertinent diagnosis offers the possibility of surgery resection, with a good 5 early survival rate and a poor relapse rate.

Abbreviations

APUD, Amine Precursor Uptake Decarboxilase; CEA, carcinoembryonary antigen; CK7, cytokeratin 7; CT, computer tomography; PET, positone emission tomography; PHCT, primary hepatic carcinoid tumour; PPI, proton pomp inhibitor; TACE, transcatheter arterial embolization; ZES, Zollinger Ellison syndrome.

Consent

Written informed consent was obtained from the patient for publication of this case report and accompanying images. A copy of the written consent is available for review by the Editor-in-Chief of this journal.

Competing interests

The authors declare that they have no competing interests.

Authors' contributions

GR analyzed and interpreted the patient data, made substantial contributions to conception and design and was the major contributor in writing the manuscript; MS was an important contributor in writing the manuscript; MH performed the histological examination of the tumour samples; RD and LA analyzed and interpreted the patient data; FJ and SV have been involved in revising critically the manuscript for important intellectual content; JLO have given final approval of the version to be published. All authors read and approved the final manuscript.

Authors' information

Francisco Jorquera and Jose Luis Olcoz are members of CIBEREHD group, founded by Instituto Carlos III, Spain.

Acknowledgements

We would like to express our gratitude to Teresa Hernandez Iglesias from Centro de Investigación de Cáncer, Salamanca, Spain, who helped us with the gastrin immunohistochemistry staining.

References

1. Berna MJ, Hoffmann KM, Serrano J, Gibril F, Jensen RT: **Serum gastrin in Zollinger-Ellison syndrome: Prospective study of fasting serum gastrin in 309 patients from the National Institutes of Health and comparison with 2229 cases from the literature.** *Medicine (Baltimore)* 2006, **85**:295-330.
2. Orlando LA, Lenard L, Orlando RC: **Chronic hypergastrinemia: causes and consequences.** *Dig Dis Sci* 2007, **52**:2482-2489.
3. Gravante G, De Liguori Carino N, Overton J, Manzia TM, Orlando G: **Primary carcinoids of the liver: a review of symptoms, diagnosis and treatments.** *Dig Surg* 2008, **25**:364-368.
4. Kulke MH: **Neuroendocrine tumours: clinical presentation and management of localized disease.** *Cancer Treat Rev* 2003, **29**:363-370.
5. Nikfarjam M, Muralidharan V, Christophi C: **Primary hepatic carcinoid tumours.** *HPB (Oxford)* 2004, **6**:13-17.
6. Roskams T, De Vos R, van den Oord JJ, Desmet V: **Cells with neuroendocrine features in regenerating human liver.** *APMIS Suppl* 1991, **23**:32-39.
7. Lingamfelter D, Hoffman L, Verma A, Depond W, Lankachandra K: **Giant atypical carcinoid of the liver with vascular metastases and local sinusoidal invasion: a case report.** *J Med Case Reports* 2007, **1**:47.
8. Soga J: **Primary hepatic endocrinomas (carcinoids and variant neoplasms). A statistical evaluation of 126 reported cases.** *J Exp Clin Cancer Res* 2002, **21**:457-468.
9. Kehagias D, Mouloupoulos L, Smirniotis V, Pafiti A, Ispanopoulos S, Vlahos L: **Imaging findings in primary carcinoid tumour of the liver with gastrin production.** *Br J Radiol* 1999, **72**:207-209.
10. Sinha V, Dyer P, Shuvro RC, Geh JI, Karandikar S: **Case of carcinoid crisis following a fine-needle biopsy of hepatic metastasis.** *Eur J Gastroenterol Hepatol* 2009, **21**:101-103.
11. Fenwick SW, Wyatt JI, Toogood GJ, Lodge JP: **Hepatic resection and transplantation for primary carcinoid tumors of the liver.** *Ann Surg* 2004, **239**:210-219.
12. Touloumis Z, Delis SG, Triantopoulou C, Giannakou N, Avgerinos C, Dervenis C: **Primary hepatic carcinoid; a diagnostic dilemma: a case report.** *Cases J* 2008, **1**:314.
13. Zhang A, Xiang J, Zhang M, Zheng S: **Primary hepatic carcinoid tumours: clinical features with an emphasis on carcinoid syndrome and recurrence.** *J Int Med Res* 2008, **36**:848-859.
14. Miura K, Shirasawa H: **Primary carcinoid tumor of the liver.** *Am J Clin Pathol* 1988, **89**:561-564.

Do you have a case to share?

Submit your case report today

- Rapid peer review
- Fast publication
- PubMed indexing
- Inclusion in Cases Database

Any patient, any case, can teach us something



**CASES
NETWORK**

www.casesnetwork.com