

# Clinimetric properties of the Nepali version of the Pain Catastrophizing Scale in individuals with chronic pain

Saurab Sharma<sup>1,2</sup>

Pascal Thibault<sup>3</sup>

J Haxby Abbott<sup>2</sup>

Mark P Jensen<sup>4</sup>

<sup>1</sup>Department of Physiotherapy, Kathmandu University School of Medical Sciences, Dhulikhel, Nepal; <sup>2</sup>Centre for Musculoskeletal Outcomes Research, Dunedin School of Medicine, University of Otago, Dunedin, Otago, New Zealand;

<sup>3</sup>Department of Psychology, McGill University, Montreal, Québec, Canada;

<sup>4</sup>Department of Rehabilitation Medicine, University of Washington, Seattle, USA

**Background:** Pain catastrophizing is an exaggerated negative cognitive response related to pain. It is commonly assessed using the Pain Catastrophizing Scale (PCS). Translation and validation of the scale in a new language would facilitate cross-cultural comparisons of the role that pain catastrophizing plays in patient function.

**Purpose:** The aim of this study was to translate and culturally adapt the PCS into Nepali (Nepali version of PCS [PCS-NP]) and evaluate its clinimetric properties.

**Methods:** We translated, cross-culturally adapted, and performed an exploratory factor analysis (EFA) of the PCS-NP in a sample of adults with chronic pain (N=143). We then confirmed the resulting factor model in a separate sample (N=272) and compared this model with 1-, 2-, and 3-factor models previously identified using confirmatory factor analyses (CFAs). We also computed internal consistencies, test-retest reliabilities, standard error of measurement (SEM), minimal detectable change (MDC), and limits of agreement with 95% confidence interval (LOA<sub>95%</sub>) of the PCS-NP scales. Concurrent validity with measures of depression, anxiety, and pain intensity was assessed by computing Pearson's correlation coefficients.

**Results:** The PCS-NP was comprehensible and culturally acceptable. We extracted a two-factor solution using EFA and confirmed this model using CFAs in the second sample. Adequate fit was also found for a one-factor model and different two- and three-factor models based on prior studies. The PCS-NP scores evidenced excellent reliability and temporal stability, and demonstrated validity via moderate-to-strong associations with measures of depression, anxiety, and pain intensity. The SEM and MDC for the PCS-NP total score were 2.52 and 7.86, respectively (range of PCS scores 0–52). LOA<sub>95%</sub> was between –15.17 and +16.02 for the total PCS-NP scores.

**Conclusion:** The PCS-NP is a valid and reliable instrument to assess pain catastrophizing in Nepalese individuals with chronic pain.

**Keywords:** measurement error, outcome measure, Bland–Altman plot, reliability, measurement properties, pain assessment

## Introduction

Pain catastrophizing, which has been defined as an exaggerated negative cognitive response related to pain,<sup>1</sup> has been shown to be associated with a broad array of important quality of life domains such as pain intensity, pain interference, and psychological function in individuals with chronic pain from different cultures.<sup>2,3</sup> Catastrophizing is responsive to various pain treatments<sup>4–7</sup> and has been found to mediate the effects of many of these.<sup>4,8</sup> Thus, catastrophizing remains an important psychosocial domain to assess in patients with chronic pain. The most common measure of pain catastrophizing is the 13-item Pain Catastrophizing Scale (PCS).

Correspondence: Saurab Sharma  
Department of Physiotherapy,  
Kathmandu University School of Medical  
Sciences, Dhulikhel Hospital Kathmandu  
University Hospital, PO Box No 11008,  
Dhulikhel, Nepal  
Tel +977 98 4163 4043  
Fax +977 1 49 0707  
Email saurabsharma1@gmail.com

The PCS has three subscales assessing pain-related rumination, magnification, and helplessness.<sup>1,9</sup> This three-factor structure has been confirmed in other English-speaking samples,<sup>9,10</sup> although research has shown that two-factor solutions show better fit in some samples.<sup>11,12</sup> Non-English translations have also been shown to yield both two and three factors.<sup>13–19</sup> However, given the strong associations among the factors, researchers tend to use the total PCS score more often than the subscale scores.<sup>4,5,7</sup>

The original English version of the PCS and its translated versions are psychometrically robust. The total score of PCS has repeatedly been shown to be reliable as evidenced by good-to-excellent internal consistency<sup>2,3,10,14–17,20,21</sup> and excellent test–retest reliability.<sup>2,14,17,20–22</sup> Standard error of measurement (SEM) and minimal detectable change (MDC) of the PCS range from 1.6 to 4.6<sup>14,15,21,22</sup> and 8.8 to 12.8,<sup>14,15,17,21</sup> respectively. Concurrent validity of the PCS is supported via moderate-to-strong correlations (ie,  $r \geq 0.30$ ) with measures of depression,<sup>2,14,16,17</sup> anxiety,<sup>1,2,14,17</sup> and pain intensity.<sup>1,2,10,11,14,16,17</sup>

The PCS has been translated into a number of different languages (<https://eprovide.mapi-trust.org/instruments/pain-catastrophizing-scale#languages>). The availability of translated measures is critical to facilitate research examining the role that language and culture may play in how catastrophizing is related to patient function. Thus, the aim of this study was to translate the PCS into another language – this time, Nepali (Nepali version of PCS [PCS-NP]) – and assess its clinimetric properties. Consistent with the extant research, we hypothesized that the PCS-NP would demonstrate either a two-factor structure or a three-factor structure<sup>1,12</sup> and that the factors would be strongly associated with one another, supporting the use of the total scale in this population. We further hypothesized that the PCS-NP scales would demonstrate 1) good-to-excellent internal consistencies (ie, Cronbach's  $\alpha \geq 0.70$ ),<sup>2,14–17,20,21,23,24</sup> 2) excellent 2-week test–retest stability (ie, intraclass correlation coefficient [ICC]  $\geq 0.75$ ),<sup>14,15,17,20–22,24</sup> 3) SEM between 1.6 and 4.6,<sup>14,15,21,22</sup> 4) MDC between 8.8 and 12.8,<sup>14,15,17,21</sup> and 5) concurrent validity via moderate-to-strong correlations (ie,  $r \geq 0.30$ ) with measures of depression, anxiety, and pain intensity.<sup>2,14,16,17</sup>

## Methods

We first translated the PCS to Nepali and performed cognitive debriefing of the instructions and items to ensure that the items were culturally appropriate in 30 individuals with musculoskeletal pain. Next, we evaluated the clinimetrics of the PCS-NP in two independent samples. Ethical approval of the research was obtained from the Institutional Review Com-

mittee of the Kathmandu University School of Medical Sciences, Dhulikhel, Nepal (reference number: 105/14), and the study complies with ethical guidelines of the Declaration of Helsinki. Written informed consent was obtained from all the research participants before data collection. Those participants who could not read or provide a written signature provided a verbal consent, and a witness signed on their behalf.

## Translation procedure

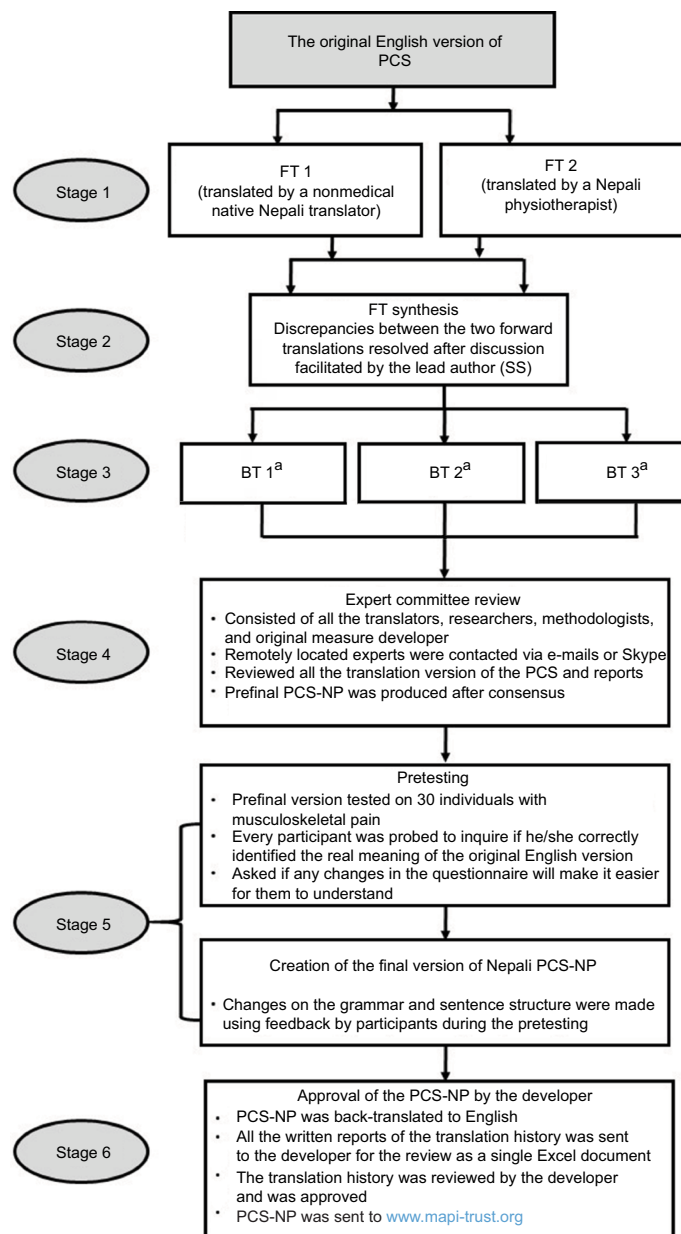
Translation of PCS into Nepali was performed using standard guidelines.<sup>25</sup> First, we obtained permission from the developer (Professor Michael Sullivan) to translate the PCS into Nepali. Then, two forward translators translated the PCS into Nepali. The two forward translated versions were synthesized to a single first translated (FT) version. The FT version was then back-translated into English by three independent native English speakers. An expert committee meeting was held, which comprised language experts, translators (who were available for a face-to-face meeting), and research methodologist. Any discrepancies were discussed, and Nepali version of the PCS that is simple and comprehensible was finalized during the meeting. Translators remotely located were contacted via e-mails and Skype, and any important suggestions were noted. The final Nepali version was back-translated into English, which was sent to the last author (MPJ) for review.

The resultant version was tested in a sample of 30 individuals with either acute musculoskeletal pain or persistent musculoskeletal pain for cognitive debriefing. Minor changes were made in sentence structure, and simpler words replaced difficult words so that most participants could understand the final PCS-NP. The final Nepali version, its back-translation, and translation history were sent to the developer, who reviewed and approved it. The Nepali version is licensed and distributed by Mapi Research Trust, and researchers intending to use PCS-NP should contact Mapi Research Trust for its use (<https://eprovide.mapi-trust.org/instruments/pain-catastrophizing-scale>). The translation history is summarized in Figure 1.

## Clinimetric evaluation

### Participants

Two independent adult (age  $\geq 18$  years) samples of Nepali-speaking individuals with chronic pain (pain lasting for  $>3$  months) were recruited. The first sample included individuals with chronic pain (N=144) recruited from a tertiary care hospital (n=44; consecutive patients) and a community (n=100; by door-to-door survey) in rural Nepal with pain intensity  $\geq 4$  out of 10 on a 0–10 numerical pain rating scale (NPRS) (0= “no pain” and 10= “maximum pain”). The sec-



**Figure 1** Translation history of PCS-NP.

**Note:** <sup>a</sup>All the back translators were performed independently by native English speakers blind to the original English version of the PCS.

**Abbreviations:** BT, backward translation; FT, forward translation; PCS, Pain Catastrophizing Scale; PCS-NP, Nepali version of PCS.

ond sample, also consisted of individuals with chronic pain (N=275) who were required to report  $\geq 3$  out of 10 pain on an NPRS, was recruited mostly from the community (n=252). The reminder (n=23) of the sample was recruited from the same hospital as that used to recruit the first sample. All the participants in both samples provided data via interview.

## Measures

Participants in the first sample were administered the PCS-NP once, and participants in the second sample were administered the PCS-NP twice (2 weeks apart), with 244

(90%) of original sample providing retest data. A summary of the measures used in the study is provided in Table 1 and described in more detail later.

## Beck Anxiety Inventory (BAI)

The 21-item BAI was used to assess perceived anxiety in the first sample.<sup>26</sup> Each item is scored on a 4-point Likert scale ranging from 0 to 3 where 0= “not at all” and 3= “severely, I could barely stand it”. Total score can range from 0 to 63, with higher scores indicating more anxiety. The Nepali version of BAI – the version used in this study – has been shown to

**Table 1** Nepali versions of PROMs used in the study

Name	Study	Item	Scale	Construct assessed
PCS-NP	EFA, CFA	13	0–4, ordinal	Pain catastrophizing
BDI-NP <sup>30</sup>	EFA	21	0–3, ordinal	Depression
BAI-NP <sup>27</sup>	EFA	21	0–3, ordinal	Anxiety
GROc-NP <sup>31</sup>	CFA	7	1–7, ordinal	Global rating of change
PROMIS pain intensity	CFA	1	1–5, ordinal	Average pain intensity

**Abbreviations:** CFA, confirmatory factor analysis; EFA, exploratory factor analysis; BAI-NP, Nepali version of Beck Anxiety Inventory; BDI-NP, Nepali version of Beck Depression Inventory; GROc-NP, Nepali version of Global Rating of Change; PCS-NP, Nepali version of Pain Catastrophizing Scale; PROMs, Patient-Reported Outcome Measures; PROMIS, Patient-Reported Outcomes Measurement Information System.

be reliable (Cronbach's  $\alpha=0.89^{27}$  and ICC =0.88<sup>28</sup>). The BAI demonstrated excellent internal consistency (Cronbach's  $\alpha=0.90$ ) in the current sample.

### Beck Depression Inventory (BDI)

The 21-item BDI was used to assess depression in the first sample.<sup>29</sup> Each item in the scale has four unique response options designed for that item. Severity of depression symptoms is rated on the 4-point scale, ranging from 0 to 3. Total score can range from 0 to 63, with higher scores indicating more depression. The Nepali version of BDI is a reliable measure (Cronbach's  $\alpha=0.90^{30}$  and ICC =0.84<sup>28</sup>) and demonstrated excellent internal consistency (Cronbach's  $\alpha=0.90$ ) in the current sample.

### Patient-Reported Outcomes Measurement Information System (PROMIS) pain intensity

The PROMIS average pain intensity over the past 7 days was assessed in the second sample on a 5-point Likert scale where 1= "no pain", and 5= "very severe pain", with higher scores indicating more intense pain (<http://www.healthmeasures.net>). Test–retest stability (ICC) of the Nepali version of PROMIS pain intensity scale is 0.71 in the current second sample.

### Global Rating of Change (GROc)

The Nepali version of GROc was used to assess global impression of perceived change in their chronic pain-related problems in the second sample on a 7-point Likert scale ranging from 1 to 7.<sup>31–33</sup> Score 4 represents "no change", scores >4 indicate improvement, and scores <4 indicate worsening. The GROc was used to categorize the sample to "improved" and "stable" groups, considering 1-point change as significant improvement.<sup>32,33</sup> We classified participants with a GROc score of 4 as stable and participants with GROc scores of 5–7 as improved. Using this classification, participants in the

stable group were used for computing the test–retest stability, SEM, MDC, and limits of agreement statistics.<sup>34</sup>

### Other measures

Demographics information collected included age, sex, religion, ethnicity, education, and occupation. Additionally, total duration of chronic pain was recorded in months and pain site was assessed using a pain diagram.

## Statistical analyses

### Factor analyses

We performed an exploratory factor analysis (EFA) in the first sample (hereafter referred to as the EFA sample) using maximum likelihood for factor extraction. Factor rotation was performed using oblique rotation (Direct Oblimin; delta =0), allowing the factors to correlate with each other. Next, we performed a series of confirmatory factor analyses (CFAs) in the second sample (hereafter referred to as the CFA sample) to compare the results of the EFA from the first sample with 1) a one-factor solution including all the 13 items as a single factor, 2) the two-factor solution obtained from the largest English-speaking sample published,<sup>11</sup> and 3) the original three-factor solution found by Sullivan et al<sup>1</sup> using AMOS for Statistical Software for Social Sciences (SPSS) 24. Model fit was evaluated using the chi-square goodness-of-fit index, the ratio of chi-square value to degree of freedom, the root mean square error of approximation (RMSEA), comparative fit index (CFI), and parsimony goodness-of-fit index (PGFI). Better fit is indicated by 1) chi-square value and the ratio of chi-square to degree of freedom values closer to zero, 2) lower values of RMSEA, 3) larger values of CFI, and 4) larger value of PGFI, which indicates more parsimonious fit.<sup>35</sup>

### Reliability

To evaluate reliability, we assessed internal consistency, test–retest stability, SEM, MDC, and created Bland–Altman Plots. We computed internal consistencies of the PCS-NP scales for both samples, using Cronbach's  $\alpha$ . We considered values of Cronbach's  $\alpha < 0.70$  as inadequate, values between 0.70 and 0.79 as adequate, values between 0.80 and 0.89 as good, and values  $\geq 0.90$  as excellent.<sup>24</sup> Two-week test–retest stability was evaluated using the ICC in the stable group (GROc =4). We considered the values of ICC between 0.40 and 0.59 as fair, values between 0.60 and 0.74 as good, and values  $\geq 0.75$  as excellent.<sup>24</sup>

To further evaluate reliability, we also computed the SEM, which is an indication of how repeated administration of a measure tends to be distributed around the

“true” score. SEM is important to consider because two measurements obtained at different times will not yield exactly the same score, either because of the variation in the participants being assessed or because of the variation in the measurement process, or both.<sup>36</sup> Thus, it is possible that a measure may have large test–retest stability indicating excellent reliability but may also have a large measurement error. Therefore, the SEM compliments test–retest stability and is a recommended parameter to assess and report in clinimetric studies.<sup>37</sup> Larger scores indicate large variability, and smaller scores indicate minimal variability. We calculated SEM using the following formula:  $SEM = SD_{\text{change}} \times \sqrt{(1 - ICC)}$ ,<sup>38</sup> where  $SD_{\text{change}}$  is the standard deviation for the mean change of PCS-NP scores. Using the SEM value, we further calculated MDC for 95% confidence interval ( $MDC_{95\%}$ ) of the PCS-NP using the following formula:  $MDC_{95\%} = 1.96 \times \sqrt{2} \times SEM$ .<sup>37,38</sup> A Bland–Altman plot was created to complement the measurement error and indicates the levels of agreement between the baseline and follow-up assessments.<sup>38,39</sup> The plot was drawn with change of PCS-NP scores from baseline to follow-up (*Y*-axis) versus mean score of PCS-NP between baseline and follow-up assessments (*X*-axis). Limits of agreement with 95% confidence interval ( $LOA_{95\%}$ ) were computed by using the following formula:  $\text{mean difference} \pm 1.96 \times SD_{\text{change}}$ .<sup>39,41</sup>

### Validity

We evaluated the concurrent validity of the PCS-NP scales by computing Pearson’s correlation coefficients between the PCS-NP scale scores and the scores from Nepali versions of BDI, BAI administered to participants in the EFA sample, and PROMIS pain intensity short-form 3a measure administered to CFA sample. We considered correlation coefficients (*r*) <0.30 as weak, coefficients between 0.30 and 0.49 as moderate, and coefficients  $\geq 0.50$  as strong.<sup>42</sup> We excluded the participants for all analysis if there were any missing values on the PCS items.

### Results

The PCS-NP succeeded in retaining the semantic, idiomatic, experiential, and conceptual equivalence. The reporting of the clinimetric properties is guided by COSMIN recommendations.<sup>40</sup> Scores of PCS-NP were normally distributed in both the EFA and CFA samples. A total of 0.7% (*n*=1) and 2.6% (*n*=7) in EFA and CFA samples, respectively, scored 0/52 total score, and 0.7% (*n*=1) and 1.1% (*n*=2) in EFA and CFA samples, respectively, scored 52/52 total score.

## Demographic characteristics

The majority of study participants were women (65% and 73% in the EFA and CFA samples, respectively) and were Hindu in religion (92% and 85%). Almost half of the participants in both the samples had pain in multiple body parts (42% and 47%), followed by pain in the low back and pelvis (22% and 18%) and knee(s) (21% and 19%), respectively. All the participants in the EFA sample were individuals with chronic musculoskeletal pain; however, 4% of the CFA sample had chronic headache. Descriptive information for the two samples is presented in Table 2.

Of the 144 participants in the EFA sample and 275 participants in the CFA sample who were administered PCS-NP at the baseline assessment, there were missing items in the data completed by one and three participants, respectively,

**Table 2** Description of the study participants

Variable	N (%) or mean (SD)		P-value
	EFA sample (N=143)	CFA sample (N=272)	
Site of pain, N (%)			0.683
Multiple sites	60 (42)	128 (47)	
Low back and pelvis	32 (22)	50 (18)	
Knee	30 (21)	52 (19)	
Other sites	18 (13)	42 (16)	
Duration of pain (months), mean (SD)	51.10 (76.42)	51.26 (65.72)	0.617
Age (years), mean (SD)	47.06 (14.50)	46.30 (15.65)	0.751
Sex, N (%)			0.085
Men	50 (35)	73 (27)	
Women	93 (65)	199 (73)	
Religion, N (%)			0.007
Hindu	132 (9)	230 (85)	
Buddhist	5 (4)	35 (13)	
Other	6 (4)	7 (3)	
Race/ethnicity, N (%)			<0.001
Chettri	59 (41)	16 (6)	
Brahmin	40 (28)	87 (32)	
Newar	19 (13)	144 (53)	
Other	25 (18)	25 (9)	
Education, N (%)			<0.001
No school	45 (31)	41 (15)	
Primary school	42 (30)	53 (20)	
Secondary school	35 (24)	60 (22)	
Higher secondary and above	21 (15)	118 (43)	
Occupation, N (%)			<0.001
Not working	7 (5)	37 (14)	
Agriculture	49 (34)	43 (16)	
Household work	39 (27)	55 (20)	
Business	15 (10)	57 (21)	
Office worker	11 (8)	39 (14)	
Other	22 (15)	41 (29)	

**Abbreviations:** CFA, confirmatory factor analysis; EFA, exploratory factor analysis.

in the two samples. We excluded the participants with missing items in all analyses from EFA and CFA samples; thus, there were N=143 participants in EFA sample and N=272 participants in the CFA sample for all analyses.

### Factor analyses

Results of EFA in the EFA sample (N=143) using maximum likelihood with Oblimin rotation for factor extraction and the Kaiser criterion (ie, eigenvalues >1.0) to determine the number of factors indicated a two-factor solution. As can be seen in the pattern matrix from the EFA analysis (Table 3), Factor 1 comprised items 2, 3, 4, 5, 9, 12, and 13 and Factor 2 comprised items 1, 6, 7, 8, 10, and 11. Given the items that were loaded on each factor, we labeled Factor 1 “helplessness” and Factor 2 “pain focus”.

These two factors explained 50% of variance in the items (Figure 2). The two factors, however, were very strongly associated with one another ( $r=0.91$ ). The two-factor solution found in the first sample demonstrated an acceptable fit in the CFA sample (Table 4). In addition, the one-factor, another two-factor extracted by Chibnall and Tait,<sup>11</sup> and the three-factor extracted by Sullivan et al<sup>1</sup> also had adequate fit, comparable to the two-factor solution extracted from the EFA sample. Attempts to improve each of these models further by allowing up to two pairs of error terms to correlate resulted in only modest improvements in the fit of each model (Table 4).

### Reliability

Results of the analyses evaluating the reliability of PCS-NP total score and two subscale scores (computed using the results

of the factor analyses as a guide) are presented in Table 5. The PCS-NP demonstrated good-to-excellent internal consistency (range 0.83–0.93) in the two samples. Two-week test–retest reliability on the stable sample was excellent 0.90 (95% CI: 0.85, 0.93). SEM and MDC for the total score of PCS-NP were 2.52 and 6.98, respectively.  $LOA_{95\%}$  ranged from –15.17 to 16.02 for the total PCS-NP scores. The  $LOA_{95\%}$  of the subscales is presented in Table 5. Bland–Altman plot, which shows the limits of agreement for the total PCS items and the two factors, separately, is presented as Figure 3.

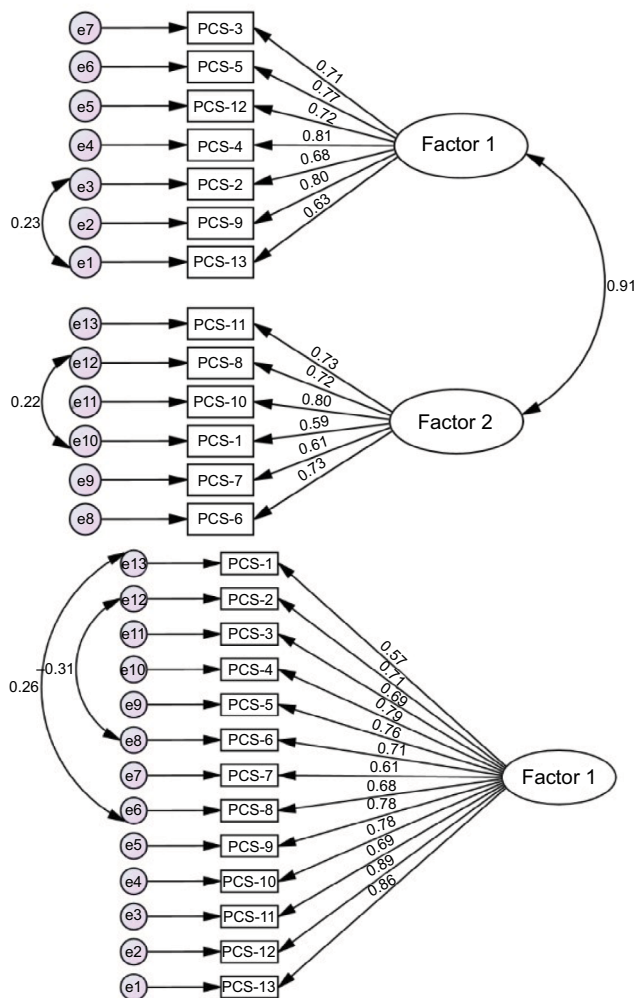
### Validity

Both the total score and subscale scores were positively, moderately, and significantly associated with the criterion variables assessing depression, anxiety, and pain intensity. Concurrent validity of PCS-NP total scores and subscales is presented in Table 6.

**Table 3** Pattern matrix after maximum likelihood factor extraction and Oblimin rotation

Item number	Original scale	Brief description of item	Factors	
			1	2
3	H	Never get any better	<b>0.78</b>	0.06
5	H	Can't stand it	<b>0.73</b>	0.03
12	H	Nothing I can do	<b>0.73</b>	0.10
4	H	It's awful	<b>0.72</b>	-0.07
2	H	Can't go on	<b>0.62</b>	-0.13
9	R	Can't keep out of mind	<b>0.56</b>	-0.24
13	M	Something serious may happen	<b>0.53</b>	-0.16
11	R	Want the pain to stop	-0.10	<b>-0.85</b>
8	R	Want the pain to go away	0.03	<b>-0.73</b>
10	R	Thinking how much it hurts	0.28	<b>-0.55</b>
1	H	Worrying whether pain will end	0.37	<b>-0.39</b>
7	M	Thinking of painful experiences	0.25	<b>-0.37</b>
6	M	Afraid if pain may get worse	0.28	<b>-0.34</b>

**Note:** Bold items were included in the factors 1 and 2 on the values of the factor loadings.  
**Abbreviations:** H, helplessness; M, magnification; R, rumination.



**Figure 2** Path diagram after CFAs, two-factor model (upper), and one-factor model (lower) with adjustment for covariance of error terms in CFA sample (N=272).  
**Abbreviations:** CFAs, confirmatory factor analyses; PCS, Pain Catastrophizing Scale.

**Table 4** Results of the confirmatory factor analyses for the PCS-NP in the CFA sample (N=272)

Model and modifications	$\chi^2$ (df)	$\chi^2/df$	RMSEA	CFI	PGFI
1. One-factor model					
a. No modifications	229 (65)	3.53	0.097	0.913	0.628
b. With modification	190 (63)	3.01	0.086	0.933	0.622
2. Two-factor model <sup>a</sup>					
a. No modifications	190 (64)	2.97	0.085	0.933	0.632
b. With modifications	166 (62)	2.67	0.079	0.945	0.620
3. Two-factor model <sup>b</sup>					
a. No modifications	207 (64)	3.23	0.091	0.924	0.626
b. With modifications	171 (62)	2.76	0.081	0.942	0.617
4. Three-factor model <sup>c</sup>					
a. No modifications	200 (62)	3.23	0.091	0.927	0.608
b. With modifications	180 (60)	3.00	0.086	0.936	0.596

**Notes:** <sup>a</sup>Two-factor model based on results from the EFA sample (N=143). <sup>b</sup>Two-factor model based on Chibnall and Tait.<sup>11</sup> <sup>c</sup>Three-factor model based on Sullivan et al.<sup>1</sup>

**Abbreviations:** CFA, confirmatory factor analysis; CFI, Comparative Fit Index; df, degree of freedom; PCS-NP, Nepali version of Pain Catastrophizing Scale; PGFI, parsimony goodness-of-fit index; RMSEA, root mean square error of approximation.

**Table 5** Reliability of the PCS-NP

Sample	N	IC	Test-retest (ICC)	SEM	MDC <sub>95%</sub>	LOA <sub>95%</sub>
EFA sample	143					
PCS-NP total		0.91				
PCS-NP Factor 1		0.87				
PCS-NP Factor 2		0.83				
CFA sample	272					
PCS-NP total		0.93				
PCS-NP Factor 1		0.89				
PCS-NP Factor 2		0.85				
CFA-stable group	122					
PCS-NP total		0.90	0.90 (0.85, 0.93)	2.52	6.98	16.02, -15.17
PCS-NP Factor 1		0.88	0.88 (0.83, 0.92)	1.67	4.62	9.29, -9.69
PCS-NP Factor 2		0.89	0.89 (0.84, 0.92)	1.33	3.67	8.47, -7.22

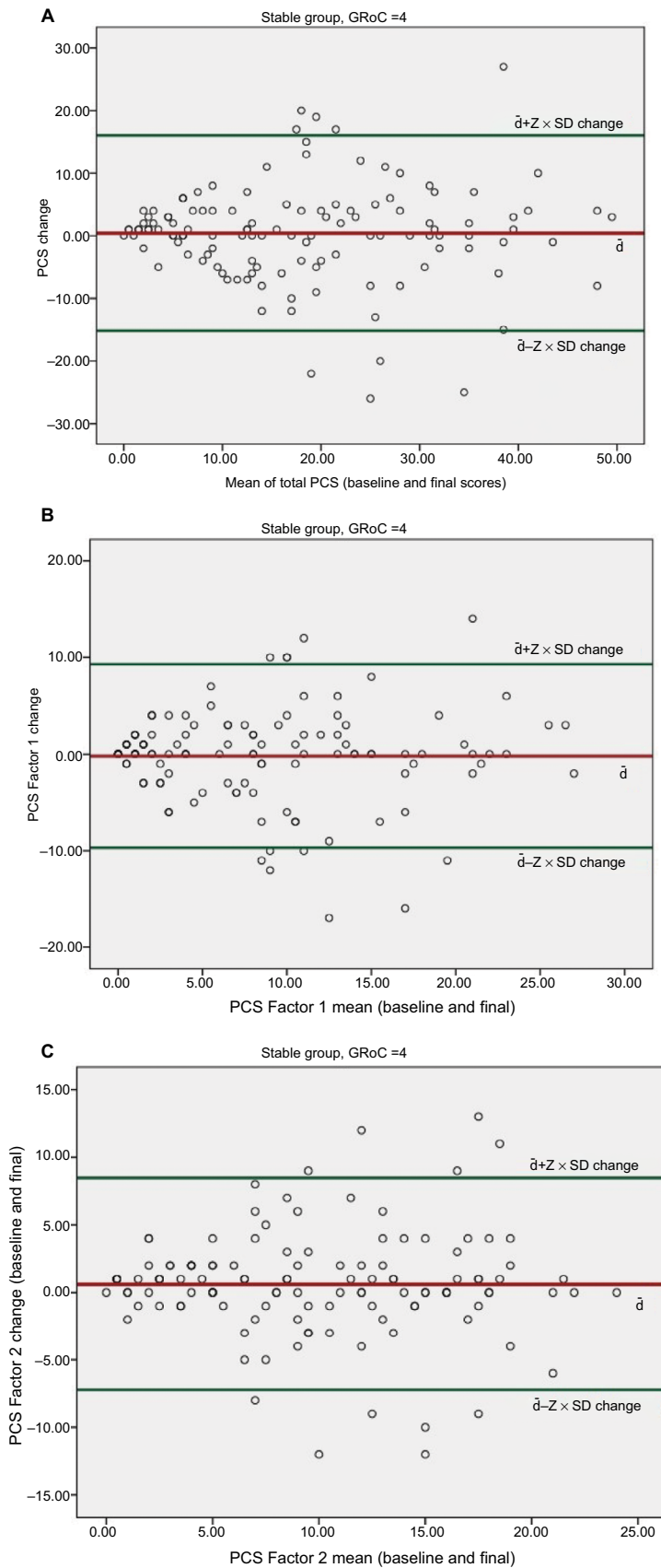
**Abbreviations:** CFA, confirmatory factor analysis; EFA, exploratory factor analysis; IC, internal consistency (Cronbach's  $\alpha$ ); ICC, intraclass correlation coefficient (with 95% CI) for 2-week test-retest stability; LOA<sub>95%</sub>, limits of agreement with 95% confidence interval; MDC<sub>95%</sub>, minimal detectable change for 95% confidence interval; PCS-NP, Nepali version of Pain Catastrophizing Scale; SEM, standard error of measurement.

## Discussion

The PCS-NP was successfully translated and adapted to Nepali and validated in Nepalese with chronic pain. The findings support its reliability and validity. Specifically, we extracted two-factor solution (Factor 1= helplessness and Factor 2= pain focus) from the EFA in the EFA sample and confirmed this solution by CFA in an independent sample. The reliability of the PCS-NP total score and two subscale scores was supported by excellent internal consistencies and test-retest stability over a 2-week period. Concurrent validity was supported via moderate-to-strong associations with measures assessing depression, anxiety, and pain intensity, as hypothesized.

## Factor analysis

The factor analysis of the PCS-NP items yielded two factors in our sample. Although three factors are more common,<sup>2,14-16,18,20,22,43</sup> two factors sometimes emerge<sup>11,12,19,44</sup> in different samples of individuals with chronic pain. The differences in the factor structure of these items across different samples may be related to cultural differences in how catastrophizing thoughts relate to each other (and possibly impact function) in different countries. In our sample, helplessness was largely retained as a unique factor, but distinct “rumination” and “magnification” factors did not emerge as they had in the original English version of the PCS<sup>45</sup> or many other samples.<sup>2,14-16,18,20,22,43</sup> Instead,



**Figure 3** Bland–Altman plots for total PCS (A), PCS Factor 1 (B), and PCS Factor 2 (C).

**Note:** Y-axis is the change in PCS-NP scores between baseline and follow-up measurements and X-axis is the mean of the PCS-NP scores at the baseline and final measurements. The red line is the mean change of score ( $\bar{d}$ ); and green lines are  $\bar{d} \pm Z \times SD_{\text{change}}$  (where  $Z = 1.96$  for 95% confidence interval.)

**Abbreviations:** GRoC, Global Rating of Change; PCS, Pain Catastrophizing Scale; PCS-NP, Nepali version of Pain Catastrophizing Scale.



**Table 6** Validity of the PCS-NP

Sample	N	Concurrent validity ( <i>r</i> )		
		BDI	BAI	PROMIS
EFA sample	143			
PCS-NP total		0.56**	0.55**	
PCS-NP Factor 1		0.55**	0.52**	
PCS-NP Factor 2		0.49**	0.49**	
CFA sample	272			
PCS-NP total				0.35**
PCS-NP Factor 1				0.33**
PCS-NP Factor 2				0.33**

**Notes:** \*\**P*<0.01. PROMIS, 1–5 verbal rating PROMIS pain intensity scale for average pain in the past 7 days.

**Abbreviations:** BAI, Beck Anxiety Inventory; BDI, Beck Depression Inventory; CFA, confirmatory factor analysis; EFA, exploratory factor analysis; PCS-NP, Nepali version of Pain Catastrophizing Scale; PROMIS, Patient-Reported Outcomes Measurement Information System.

the second factor appeared to reflect thoughts related to a focus on pain.

At the same time, the two factors that emerged in this study were strongly associated with each other, suggesting that they may both be assessing the same overarching construct. This conclusion is also supported by the similar pattern of associations between the two PCS-NP subscale scores and the criterion variables. Many other studies have also shown strong between-factor associations in both two-factor<sup>11,12,19</sup> and three-factor models.<sup>3</sup> Also, of note, even though there is a large degree of overlap in how the PCS items load onto different factors across studies, rarely if ever do the exact same PCS items load on the same two- or three-factor models in any pair of studies.<sup>3,11,12,14,17</sup> As a group, these findings support the conclusions that 1) the PCS items tend to reflect more than one (but strongly intercorrelated) subdomain of catastrophizing, 2) the specific subdomains reflected in the items vary to some degree across different populations, and 3) there exists a single overarching domain assessed by the PCS that is reliable and consistent across populations. Practically, these findings indicate that the PCS total score (but not necessarily the subdomain scores) may be most appropriate for cross-cultural research.

## Reliability

The internal consistencies of the PCS-NP total score in this study (*a* range =0.90–0.93) lie within the ranges previously reported. They are higher than the original English and the Catalan versions (*a*=0.87 in both)<sup>16,32</sup> and Hindi version (*a*=0.76),<sup>22</sup> similar to those found in samples who speak other languages such as Malay, Korean, Chinese, Italian, and German (*a* range =0.90–0.93)<sup>2,3,14,17,20</sup> and less than those found in a sample of patients from South Africa (*a*=0.97–0.98).<sup>21</sup>

Similarly, we found that the 2-week stability of the PCS-NP was excellent in our test–retest sample, consistent with our a priori hypothesis. Two weeks is considered optimal for the assessment of reproducibility of a measure, because it is long enough to limit potential recall bias and also short enough to limit real change.<sup>40</sup> Additionally, it is important to compute test–retest stability in the sample reporting that did they not perceive a change in their pain problem. Thus, in the current study, we assessed test–retest stability in those participants who reported no change in their pain problem using the GRoC as an external anchor.<sup>38</sup> Numerous previous studies either assessed test–retest stability in short periods (range 1–7 days),<sup>15,17,20,22</sup> which may have been resulted in findings that have recall bias,<sup>40</sup> or assessed using longer epochs (3–4 weeks).<sup>3,15,21</sup> To our knowledge, only two studies assessed the test–retest reliability of the PCS using a 2-week time period, the results of which are comparable to our study.<sup>14,16</sup> Additionally, we reported test–retest stability in a stable sample who reported no change in their pain-related problems. Most of the studies evaluating the psychometric properties of the PCS have not computed the test–retest reliability in a stable sample. This is especially true for those studies reporting longer follow-up for retest assessment.<sup>3,15,21</sup> The participants in these studies were more likely to have changed with respect to their pain problem (and catastrophizing scores). Thus, the stability of the PCS may be underestimated in these studies. Support for this possibility is found in one study, which computed test–retest stabilities in both a subsample of stable patients with low back pain and the total sample and found better temporal stability in the stable group (ICC =0.92, *n*=34) versus the total group (ICC =0.85, *n*=60).<sup>15</sup>

## Measurement error

The measurement error parameters we found met our a priori hypothesis for SEM, but we found lower MDC values than previously reported. Both the SEM and MDC are dependent on the test–retest coefficient. As previously indicated, the stability assessed is influenced by the sample chosen (ie, stable sample versus total sample). Not many studies have reported measurement error parameters, which are now recommended by the COSMIN checklist for clinimetric studies.<sup>37</sup> The value of SEM we found for the total score (2.52) is larger than the Hindi version (SEM =1.60)<sup>22</sup> and smaller than other versions (SEM =3.30–4.60).<sup>14,15,20,21</sup> The SEM is influenced by the SD of change of PCS score ( $SD_{\text{change}}$ ) and the ICC (refer to the formula we used to calculate SEM in the “Methods” section). The smaller SEM values in our study are likely related to our

use of the stable group to compute test–retest stability and measurement error, as opposed to other studies that used total group to compute test–retest stability and SEM. Thus, we obtained smaller  $SD_{\text{change}}$  and larger ICC values, giving us more precise value of SEM. The authors of the Hindi version study included the SD of the baseline measurement instead of the  $SD_{\text{change}}$ , which may have accounted for their very low SEM.<sup>22</sup>

The MDC value of 6.98/52 observed in our sample provides a cut-point for determining the reliability of changes in the PCS score. The MDC computed from our sample is smaller than those observed in other samples (range 8.83–13).<sup>14,17</sup> This is due to the smaller variability in the catastrophizing scores (as represented by the standard deviation) and larger test–retest reliability coefficient (ICC) in our sample, relative to those in previous studies.<sup>14,17</sup> The MDC statistics is useful as a guide to indicate whether or not a change in PCS score is greater than measurement error; that is, if the change represents true change and not just random error. For the PCS-NP, a change of 7/52 can be viewed as representing true change in the total PCS score beyond measurement error.

The results of  $LOA_{95\%}$  and Bland–Altman plots<sup>39</sup> (Figure 3) provide further information regarding measurement error.<sup>38,40</sup> The Bland–Altman plots show agreement between test and retest scores for every study participant, that is, how far each participant deviates from the mean change score between the baseline and final measurements. In the current study,  $LOA_{95\%}$  indicates that for 95% of participants, a measurement at follow-up assessment would be between 15.17 points less and 16.02 points greater (out of a total of 52 points) than the baseline measurement.

## Validity

The validity of PCS-NP is supported by 1) its comprehensibility and negligible missing items, 2) structural validity interpreted by factor analyses, 3) cross-cultural validity by adherence to high standards of translation guidelines,<sup>46</sup> and 4) concurrent validity by testing a priori hypotheses. We adapted and adhered to translation and cross-cultural adaptation guidelines by Beaton,<sup>46</sup> which assured high standards in translation methodology. Importantly, we confirmed the concurrent validity of the PCS-NP based on our a priori hypotheses that PCS-NP would correlate moderately to strongly and significantly with the criterion variables. Association of PCS-NP with measure of depression in the current sample ( $r=0.56$ ) is within the range previously reported ( $r=0.40–0.61$ ).<sup>2,14–17,20</sup> It is larger than those reported by the

Chinese ( $r=0.40$ ),<sup>2</sup> similar to Korean ( $r=0.53$ ),<sup>14</sup> but smaller than Catalan ( $r=0.61$ , BDI).<sup>16</sup> As the association with depression, PCS-NP in the current sample showed moderate negative associations with the measures of anxiety and lies in the range that is previously reported ( $r=0.53–0.82$ ).<sup>2,14,15,17,20</sup> Similarly, association of PCS-NP with measure of pain intensity is moderate, which also lies within the range previously reported ( $r=0.25–0.45$ ).<sup>2,14–17,20–22</sup> As the a priori hypotheses regarding expected correlations of PCS-NP with criterion variables were met in the current study, concurrent validity of the PCS-NP is supported.

## Strengths and limitations

One strength of the study is that it was conducted and reported using the COSMIN checklist as a guide.<sup>37,40</sup> As per the COSMIN recommendations, we used an adequate sample size (>100) and we confirmed participants' stability during the interim period by the use of GRoC. However, the study also has limitations, which should be considered when interpreting the results. One limitation is the use of cross-sectional design. Given that the correlations of the PCS-NP with the criterion variables presented are based on cross-sectional data, we are not able to draw any causal conclusions regarding the impact of catastrophizing on pain intensity, depression, or anxiety, or vice versa. Instead, the findings support the possibility that catastrophizing may play as large a role in patient functioning in Nepal as found in Western countries. This indicates that research examining the causal relationships in this population is warranted. Furthermore, the study design was not a clinical trial, in which catastrophizing was systematically manipulated. This would have allowed us to evaluate the responsiveness of the PCS-NP to treatment and link changes in the PCS-NP scores with treatment outcomes. Future research to evaluate the responsiveness of the PCS-NP to treatment, as well as to better understand the meaning of change in the PCS-NP scores (eg, the change that represents a minimum important change) would be useful. Finally, we did not assess divergent (discriminant) validity of the PCS-NP, which is another important measure of construct validity. Research to evaluate this validity domain for the PCS-NP would be useful.

## Summary and conclusion

Here, we developed a comprehensible, culturally appropriate, valid, and reliable PCS-NP for the use in Nepalese with chronic musculoskeletal pain or headache. The availability of this measure will facilitate more cross-cultural comparative study of the role that catastrophizing plays in patient with chronic pain.

For the clinical use of the PCS-NP, clinicians should consider PCS change score  $\geq 7$  as a true change beyond the measurement error. Future research should evaluate the discriminant validity of as well as the minimum important changes in the PCS-NP that is meaningful to patients, in order to better understand the validity and clinical significance of the PCS-NP.

## Acknowledgments

The authors of the study would like to acknowledge: 1) the International Association for the Study of Pain (IASP) for providing a developing country collaborative research grant to SS and MPJ, which supported this study; 2) the developer of the PCS, Professor Michael Sullivan, for granting permission to translate the PCS to Nepali, reviewing the translation history, and approving the final version; 3) all the translators for volunteering to translate the scale; 4) the physiotherapy students (Anupa Pathak, Dipendra Thakur, Jyoti Jha, Manisha Lakhey, Riju Maharjan, Shree Krishna Shilpakar, and Soniya Maharjan) at Kathmandu University School of Medical Sciences who assisted with the data collection; and 5) all the study participants who volunteered to participate in the study and investing their time for the completion of questionnaires.

This project was supported in part by “Developing Countries Collaborative Research Grant” from the International Association for the Study of Pain awarded to MPJ and SS.

## Author contributions

SS contributed to the conception, study design, data collection, data analysis, drafting of the first manuscript, and revision and approval of the final version. PT contributed to the conception, study design, and final approval of the manuscript. JHA contributed to the review of manuscript drafts and final approval of the manuscript. MPJ contributed to the conception, study design, and revisions and final approval of the manuscript. All authors contributed toward data analysis, drafting and critically revising the paper and agree to be accountable for all aspects of the work.

## Disclosure

The authors report no conflicts of interest in this work.

## References

- Sullivan MJL, Bishop SR, Pivik J. The Pain Catastrophizing Scale: development and validation. *Psychol Assess*. 1995;7(4):524–532.
- Yap JC, Lau J, Chen PP, et al. Validation of the Chinese Pain Catastrophizing Scale (HK-PCS) in patients with chronic pain. *Pain Med*. 2008;9(2):186–195.
- Mohd Din FH, Hoe VC, Chan CK, Muslan MA. Cultural adaptation and psychometric assessment of Pain Catastrophizing Scale among young healthy Malay-speaking adults in military settings. *Qual Life Res*. 2015;24(5):1275–1280.
- Trompeter HR, Bohlmeijer ET, Fox JP, Schreurs KM. Psychological flexibility and catastrophizing as associated change mechanisms during online Acceptance & Commitment Therapy for chronic pain. *Behav Res Ther*. 2015;74:50–59.
- Day MA, Thorn BE, Rubin NJ. Mindfulness-based cognitive therapy for the treatment of headache pain: a mixed-methods analysis comparing treatment responders and treatment non-responders. *Complement Ther Med*. 2014;22(2):278–285.
- Vallejo MA, Ortega J, Rivera J, Comeche MI, Vallejo-Slocker L. Internet versus face-to-face group cognitive-behavioral therapy for fibromyalgia: a randomized control trial. *J Psychiatr Res*. 2015;68:106–113.
- Thorn BE, Pence LB, Ward LC, et al. A randomized clinical trial of targeted cognitive behavioral treatment to reduce catastrophizing in chronic headache sufferers. *J Pain*. 2007;8(12):938–949.
- Carmody TP, Duncan CL, Huggins J, et al. Telephone-delivered cognitive-behavioral therapy for pain management among older military veterans: a randomized trial. *Psychol Serv*. 2013;10(3):265–275.
- Sullivan MJL, Tripp DA, Rodgers WM, Stanish W. Catastrophizing and pain perception in sport participants. *J Appl Sport Psychol*. 2000;12(2):151–167.
- Osman A, Barrios FX, Gutierrez PM, Kopper BA, Merrifield T, Grittmann L. The Pain Catastrophizing Scale: further psychometric evaluation with adult samples. *J Behav Med*. 2000;23(4):351–365.
- Chibnall JT, Tait RC. Confirmatory factor analysis of the Pain Catastrophizing Scale in African American and Caucasian Workers' Compensation claimants with low back injuries. *Pain*. 2005;113(3):369–375.
- Osman A, Barrios FX, Kopper BA, Hauptmann W, Jones J, O'Neill E. Factor structure, reliability, and validity of the Pain Catastrophizing Scale. *J Behav Med*. 1997;20(6):589–605.
- Van Damme S, Crombez G, Bijttebier P, Goubert L, Van Houdenhove B. A confirmatory factor analysis of the Pain Catastrophizing Scale: invariant factor structure across clinical and non-clinical populations. *Pain*. 2002;96(3):319–324.
- Cho S, Kim HY, Lee JH. Validation of the Korean version of the Pain Catastrophizing Scale in patients with chronic non-cancer pain. *Qual Life Res*. 2013;22(7):1767–1772.
- Fernandes L, Storheim K, Lochting I, Grotle M. Cross-cultural adaptation and validation of the Norwegian pain catastrophizing scale in patients with low back pain. *BMC Musculoskelet Disord*. 2012;13:111.
- Miro J, Nieto R, Huguet A. The Catalan version of the Pain Catastrophizing Scale: a useful instrument to assess catastrophic thinking in whiplash patients. *J Pain*. 2008;9(5):397–406.
- Monticone M, Baiardi P, Ferrari S, et al. Development of the Italian version of the Pain Catastrophizing Scale (PCS-I): cross-cultural adaptation, factor analysis, reliability, validity and sensitivity to change. *Qual Life Res*. 2012;21(6):1045–1050.
- Sehn F, Chachamovich E, Vidor LP, et al. Cross-cultural adaptation and validation of the Brazilian Portuguese version of the pain catastrophizing scale. *Pain Med*. 2012;13(11):1425–1435.
- Ilcin N, Gurpinar B, Bayraktar D, et al. Cross-cultural adaptation and validation of the Turkish version of the pain catastrophizing scale among patients with ankylosing spondylitis. *J Phys Ther Sci*. 2016;28(1):298–303.
- Meyer K, Sprött H, Mannion AF. Cross-cultural adaptation, reliability, and validity of the German version of the Pain Catastrophizing Scale. *J Psychosom Res*. 2008;64(5):469–478.
- Morris LD, Grimmer-Somers KA, Louw QA, Sullivan MJ. Cross-cultural adaptation and validation of the South African Pain Catastrophizing Scale (SA-PCS) among patients with fibromyalgia. *Health Qual Life Outcomes*. 2012;10:137.
- Bansal D, Gudala K, Lavudiya S, Ghai B, Arora P. Translation, adaptation, and validation of Hindi version of the Pain Catastrophizing Scale in patients with chronic low back pain for use in India. *Pain Med*. 2016;17(10):1848–1858.

23. Cronbach L. *Essentials of Psychological Testing*. New York: Harpers-CollinsPublishers. Inc; 1990.
24. Cicchetti DV. Guidelines, criteria, and rules of thumb for evaluating normed and standardized assessment instruments in psychology. *Psychol Assess*. 1994;6(4):284–290.
25. Beaton DE, Bombardier C, Guillemin F, Ferraz MB. Guidelines for the process of cross-cultural adaptation of self-report measures. *Spine (Phila Pa 1976)*. 2000;25(24):3186–3191.
26. Beck AT, Epstein N, Brown G, Steer RA. An inventory for measuring clinical anxiety: psychometric properties. *J Consult Clin Psychol*. 1988;56(6):893–897.
27. Kohrt BA, Kunz RD, Koirala NR, Sharma VD, Nepal MK. Validation of the Nepali version of the Beck Anxiety Inventory. *J Inst Med*. 2003;25(1):1–4.
28. Kohrt BA, Speckman RA, Kunz RD, et al. Culture in psychiatric epidemiology: using ethnography and multiple mediator models to assess the relationship of caste with depression and anxiety in Nepal. *Ann Hum Biol*. 2009;36(3):261–280.
29. Beck AT, Ward CH, Mendelson M, Mock J, Erbaugh J. An inventory for measuring depression. *Arch Gen Psychiatry*. 1961;4:561–571.
30. Kohrt BA, Kunz RD, Koirala NR, Sharma VD, Nepal MK. Validation of a Nepali version of the Beck Depression Inventory. *Nepalese J Psychiatry*. 2002;2(4):123–130.
31. Sharma S, Palanchoke J, Reed D, Haxby Abbott J. Translation, cross-cultural adaptation and psychometric properties of the Nepali versions of numerical pain rating scale and global rating of change. *Health Qual Life Outcomes*. 2017;15(1):236.
32. Kamper SJ, Maher CG, Mackay G. Global rating of change scales: a review of strengths and weaknesses and considerations for design. *J Man Manip Ther*. 2009;17(3):163–170.
33. Sharma S, Palanchoke J, Abbott JH. Cross-cultural adaptation and validation of the translated Nepali version of the patient-specific functional scale. *J Orthop Sports Phys Ther*. 2018 In Press.
34. Hefford C, Abbott JH, Baxter GD, Arnold R. Outcome measurement in clinical practice: practical and theoretical issues for health related quality of life (HRQOL) questionnaires. *Phys Ther Rev*. 2011;16(3):155–167.
35. Hu LT, Bentler PM. Cutoff criteria for fit indexes in covariance structure analysis: conventional criteria versus new alternatives. *Struct Equ Model*. 1999;6(1):1–55.
36. Bland JM, Altman DG. Measurement error. *BMJ*. 1996;313(7059):744.
37. Mokkink LB, Terwee CB, Patrick DL, et al. The COSMIN checklist for assessing the methodological quality of studies on measurement properties of health status measurement instruments: an international Delphi study. *Qual Life Res*. 2010;19(4):539–549.
38. de Vet HCW, Terwee CB, Mokkink LB, Knol DL. *Measurement in Medicine: A Practical Guide*. Cambridge, UK, Cambridge University Press; 2011.
39. Bland JM, Altman DG. Statistical methods for assessing agreement between two methods of clinical measurement. *Lancet*. 1986;1(8476):307–310.
40. Mokkink LB, Terwee CB, Patrick DL, et al. *COSMIN Checklist Manual*. 2012. Available from <http://www.cosmin.nl>.
41. Bland JM, Altman DG. Applying the right statistics: analyses of measurement studies. *Ultrasound Obstet Gynecol*. 2003;22(1):85–93.
42. Cohen J. *Statistical Power Analysis for the Behavioral Sciences*. Hillsdale, NJ: Lawrence Earlbaum Associates;1988:2.
43. Karpinski AC, Dzurec LC, Fitzgerald SM, Bromley GE, Meyers TW. Examining the factor structure of the Pain Catastrophizing Scale (PCS) as a measure of victim response to the psychological pain of subtle workplace bullying. *J Nurs Meas*. 2013;21(2):264–283.
44. Huijjer HA, Fares S, French DJ. The development and psychometric validation of an Arabic-language version of the Pain Catastrophizing Scale. *Pain Res Manag*. 2017;2017:1472792.
45. European Burns Association 14th Annual Congress. *Burns*. 2011; 37(Suppl 1):S1–S29.
46. Beaton DE. Understanding the relevance of measured change through studies of responsiveness. *Spine (Phila Pa 1976)*. 2000;25(24):3192–3199.

## Journal of Pain Research

### Publish your work in this journal

The Journal of Pain Research is an international, peer reviewed, open access, online journal that welcomes laboratory and clinical findings in the fields of pain research and the prevention and management of pain. Original research, reviews, symposium reports, hypothesis formation and commentaries are all considered for publication.

Submit your manuscript here: <https://www.dovepress.com/journal-of-pain-research-journal>

Dovepress

The manuscript management system is completely online and includes a very quick and fair peer-review system, which is all easy to use. Visit <http://www.dovepress.com/testimonials.php> to read real quotes from published authors.