

Methanol May Function as a Cross-Kingdom Signal

Yuri L. Dorokhov^{1,2*}, Tatiana V. Komarova^{1,2}, Igor V. Petrunia², Vyacheslav S. Kosorukov³, Roman A. Zinovkin¹, Anastasia V. Shindyapina¹, Olga Y. Frolova², Yuri Y. Gleba⁴

1 A. N. Belozersky Institute of Physico-Chemical Biology, Moscow State University, Moscow, Russia, **2** N. I. Vavilov Institute of General Genetics, Russian Academy of Science, Moscow, Russia, **3** N. N. Blokhin National Cancer Research Center, Russian Academy of Medical Sciences, Moscow, Russia, **4** Nomad Bioscience GmbH, Biozentrum Halle, Halle (Saale), Germany

Abstract

Recently, we demonstrated that leaf wounding results in the synthesis of pectin methylesterase (PME), which causes the plant to release methanol into the air. Methanol emitted by a wounded plant increases the accumulation of methanol-inducible gene mRNA and enhances antibacterial resistance as well as cell-to-cell communication, which facilitates virus spreading in neighboring plants. We concluded that methanol is a signaling molecule involved in within-plant and plant-to-plant communication. Methanol is considered to be a poison in humans because of the alcohol dehydrogenase (ADH)-mediated conversion of methanol into toxic formaldehyde. However, recent data showed that methanol is a natural compound in normal, healthy humans. These data call into question whether human methanol is a metabolic waste product or whether methanol has specific function in humans. Here, to reveal human methanol-responsive genes (MRGs), we used suppression subtractive hybridization cDNA libraries of HeLa cells lacking ADH and exposed to methanol. This design allowed us to exclude genes involved in formaldehyde and formic acid detoxification from our analysis. We identified MRGs and revealed a correlation between increases in methanol content in the plasma and changes in human leukocyte MRG mRNA levels after fresh salad consumption by volunteers. Subsequently, we showed that the methanol generated by the pectin/PME complex in the gastrointestinal tract of mice induces the up- and downregulation of brain MRG mRNA. We used an adapted Y-maze to measure the locomotor behavior of the mice while breathing wounded plant vapors in two-choice assays. We showed that mice prefer the odor of methanol to other plant volatiles and that methanol changed MRG mRNA accumulation in the mouse brain. We hypothesize that the methanol emitted by wounded plants may have a role in plant-animal signaling. The known positive effect of plant food intake on human health suggests a role for physiological methanol in human gene regulation.

Citation: Dorokhov YL, Komarova TV, Petrunia IV, Kosorukov VS, Zinovkin RA, et al. (2012) Methanol May Function as a Cross-Kingdom Signal. *PLoS ONE* 7(4): e36122. doi:10.1371/journal.pone.0036122

Editor: Joseph Najbauer, City of Hope National Medical Center and Beckman Research Institute, United States of America

Received: September 6, 2011; **Accepted:** March 30, 2012; **Published:** April 26, 2012

Copyright: © 2012 Dorokhov et al. This is an open-access article distributed under the terms of the Creative Commons Attribution License, which permits unrestricted use, distribution, and reproduction in any medium, provided the original author and source are credited.

Funding: This work was supported by grant (11-04-01152-a) from Russian Fund of Basic Research (<http://grant.rfbr.ru>). The funders had no role in study design, data collection and analysis, decision to publish, or preparation of the manuscript.

Competing Interests: YYG is an employee of Nomad Bioscience GmbH. This does not alter the authors' adherence to all the PLoS ONE policies on sharing data and materials.

* E-mail: dorokhov@genebee.msu.su

Introduction

Plants are exposed to a different abiotic and biotic stress conditions [1–3]. Physical damage to a plant is a potential threat because it allows pathogen entry. The mechanical wounding of plant leaves after wind, rain, hail, or herbivore feeding is one of the first steps in pathogen infection and herbivore attack and activates signal transduction pathways and airborne signals to fend off harmful organisms. The mechanism by which these signals promote plant immunity remains elusive. In response to an attack by a pathogen and plant damage, several plant species emit volatile organic compounds (VOCs), including ethylene [4], methyl salicylate [5], methyl jasmonate [6,7], nitric oxide [8,9], and *cis*-3-Hexen-1-ol [10], which upregulate pathogen-related (*PR*) genes [10–12]. Pectin methylesterase (PME, EC: 3.1.1.11) [13] is a *PR* protein [14] and the first barrier of defense against invading pathogens [14–20] and herbivores [21,22]. In higher plants, PME is a ubiquitous multifunctional enzymatic component of the plant cell wall. The *PME* genes encode a proPME precursor with an N-terminal extension of variable length [23–25]. The tobacco proPME protein contains a long N-terminal leader sequence with

a transmembrane domain, which is important for PME delivery into the cell wall [25,26]. PME participates in cell wall biogenesis during general plant growth [27–30], nematode infection [31], and pollen tube growth [32–35].

PME may be involved in the cell-to-cell movement of plant viruses [36] because it interacts with the movement protein of the *Tobacco mosaic virus* (TMV) [37,38]. PME also efficiently enhances virus- and transgene-induced gene silencing (VIGS and TIGS) via the activation of siRNA and miRNA production [39,40]. In the case of bacterial and fungal phytopathogens, PMEs function as virulence factors that are necessary for pathogen invasion and spreading through plant tissues [41,42].

Pectin demethylation directed by cell wall PME is likely to be the main source of methanol on Earth [43–46]. Although wounding and herbivore attack increase methanol emissions [22,47–49], methanol has long been assumed to be a metabolic waste product [43–45]. This point of view was supported by the observations that, in natural conditions, PME-generated methanol can accumulate in the intercellular air space of intact leaves at night [45] and, when the stomata open in the morning, methanol emission peaks are observed [46]. However, a study of the effects

of the PME-generated methanol released from wounded plants (“emitters”) on the defensive reactions of neighboring “receiver” plants indicated that the methanol emitted by a wounded plant may function as a specific signal to enhance antibacterial resistance and to facilitate viral spread in neighboring plants [50]. To reveal plant methanol gene targets, methanol-inducible genes in methanol-treated *Nicotiana benthamiana* plants were identified. A model explaining the role of methanol in within-plant and plant-to-plant communication was suggested by these studies [50]. It has been hypothesized that methanol-inducible genes upregulation and enhanced virus reproduction is an unintended consequence of the plant’s response against bacterial pathogens.

Methanol is widely available in human life. It is used in industrial production and is also present in windshield wiper fluid, antifreeze, and model airplane fuel. Methanol is colorless and has a taste and odor only subtly different from that of ethanol. In addition to alcoholic drinks and accidental poisoning, another source of methanol is aspartame, which is used as a synthetic nonnutritive sweetener [51–54]. In humans, the total methanol consumption from natural sources is estimated to average 10.7 mg/day [55].

Methanol itself has a low toxicity [56]. For example, animal cell cultures can tolerate high concentrations of methanol [57–60]. However, in mammalian organisms, methanol is metabolized by alcohol dehydrogenases (ADHs) to produce formaldehyde and formic acid and, further, to carbon dioxide and water [61,62]. Ethanol, which is a substrate of ADHs, has a role as an antidote, so the inevitable methanol content in commercially available alcoholic drinks is not harmful for human health [63,64]. In cases of accidental methanol poisoning, the current primary treatment is the inhibition of ADHs, preferably by ethanol and fomepizole (4-methyl-1*H*-pyrazole) [65–69].

More than 60 years ago, a small amount of methanol was detected unexpectedly in the breath of several normal, healthy humans using gas-liquid chromatography [70–72]. Subsequently, methanol was also identified in the exhaled breath of healthy volunteers using mass spectrometry [73–76]. The level of breath methanol was equivalent to the 0.038 mmol/L (1.22 mg/L) found in blood, which is more than 400 times lower than harmful concentrations [56]. In methanol poisonings, the usual criteria for hemodialysis and antidote therapy include a plasma methanol concentration >15.6 mmol/L (500 mg/L) [77]. The methanol content in the exhaled breath of volunteers was increased after fruit and fruit juice consumption [70,75], suggesting the participation of pectin/PME in methanol generation [78]. The origin of endogenous methanol in humans is not yet clear, but two sources were suggested [70]. The first is human gut microbiota. Anaerobic fermentation by gut bacteria is known to produce a variety of VOCs, including all alcohols in the series from methanol to heptanol [79]. Although methanol-generating microbes have not yet been isolated from intestinal bacteria, this hypothesis should be investigated further. The second suggestion considers methanol to be a “product of some metabolic process” [70]. This hypothesis was supported by evidence that *S*-adenosyl methionine (SAM) may be transformed to methanol and *S*-adenosyl homocysteine in the bovine pituitary gland and other animal brain tissue [80,81]. SAM is a universal endogenous methyl donor and is a limiting factor in various methylation reactions, including the methylation of proteins, phospholipids, DNA, RNA and other molecules, which are the basic mechanisms of epigenetic phenomena [82–84]. Protein carboxymethylase is highly localized in the brain and the pituitary gland of several mammalian species [85–87]. Carboxymethylation involves the

methylation of the –COOH group of the amino acids in proteins, and the reaction is catalyzed by methyltransferases [88], resulting in the production of carboxyl methyl esters. Carboxyl methyl esters are unstable and are readily hydrolyzed in neutral and basic pH conditions or by methylesterase to produce methanol [86,89,90]. Interestingly, aspartame, which is a widely used synthetic non-nutritive sweetener, is a methyl ester of a dipeptide (*N*-*L*-aspartyl-*L*-phenylalanine) that is likely to convert to methanol with the participation of protein methylesterases [55].

Based on the data above, methanol is a natural compound in normal, healthy humans and mammals. Here, we identified MRGs as methanol gene targets using forward and reverse suppression subtractive hybridization (SSH) cDNA libraries of HeLa cells that had been exposed to methanol. We showed that vegetable intake increases the methanol content in human plasma and MRG mRNA accumulation in human leukocytes. To approach the question of whether animal methanol is a metabolic waste product or whether methanol has specific function similar to the signaling function of methanol in plant life, we studied animal responses to digested and inhaled methanol. We showed that plant leaf wounding resulted in the emission of gaseous methanol, which increased methanol content in plasma of mice. Moreover, we identified MRGs as methanol gene targets and detected the up- or downregulation of MRGs in the brains of mice after breathing methanol and leaf vapors. We revealed a preference of the mice for the odor of methanol over other plant volatiles in a Y-maze setup and suggested that methanol may function as a cross-kingdom signal.

Results

Identification of MRGs

The experimental identification of animal MRGs includes serious challenges because of animal alcohol dehydrogenase, which is present mainly in hepatic cells and initiates methanol conversion into toxic formaldehyde and formic acid. Therefore, cell cultures lacking alcohol dehydrogenase activity had to be used to exclude genes involved in formaldehyde and formic acid detoxification from our analysis. To that end, we selected HeLa cells, which have been shown to have no ADH activity [91–93]. To identify MRGs, forward and reverse SSH cDNA libraries of HeLa cells exposed to methanol (75 mmol/L for 6 h) were constructed. Of the 27 differentially expressed transcripts, 5 appeared to be more affected in intact cells, and 22 transcripts appeared to be upregulated following methanol treatment. The cloned expressed sequence tags (ESTs) of only the genes that were upregulated in response to methanol treatment were chosen for sequencing. The methanol-specific upregulation of the SSH-identified genes was validated by virtual northern blot analysis hybridized with [³²P]-labeled probes prepared from randomly selected differential clones, which were identified by differential screening. We identified and selected four of the most abundant SSH-identified genes for further analysis (Table 1). The first gene was glyceraldehyde 3-phosphate dehydrogenase (*GAPDH*), which has a role in glycolysis and nuclear functions, including transcription, RNA transport, DNA replication, and apoptosis [94]. The second gene, *hTax1* (human T-cell leukemia virus type I) binding protein 1 (*hTax1BPI*), encodes a cytoplasmic protein that inhibits TNF-induced apoptosis by mediating the anti-apoptotic activity of TNFAIP3 and that may also have a role in the pro-inflammatory cytokine IL-1 signaling cascade [95]. The third gene, human sorting nexin family member 27 (*hSNX27*), encodes a cytoplasmic protein that is involved in cellular endocytic trafficking and the T lymphocyte endocytic recycling pathway

[96]. The last gene, human cyclin A2 (*hCycA2*), encodes a protein belonging to the highly conserved cyclin family, which is a key component of the cell cycle machinery, and functions as a regulator of cyclin-dependent kinases [97]. The human orthologs, *hGAPDH*, *hTax1BP1*, *hSNX27* and *hCycA2*, have highly conserved mouse counterparts: *mGAPDH* (Fig. S1), *mTax1BP1* (Fig. S2), *mSNX27* (Fig. S3), and *mCycA2* (Fig. S4). The known properties and functions of the genes identified by SSH are not related to formaldehyde and formic acid detoxification. We concluded that *hGAPDH*, *hTax1BP1*, *hSNX27* and *hCycA2* are genes that are sensitive to methanol, which we called MRGs.

Food intake influences methanol content in human plasma and MRG expression in leukocytes in healthy humans

To validate MRG identification and to evaluate the biological function of MRGs identified in HeLa cancer cells, we exposed cells from healthy humans to different concentrations of physiological methanol in their blood. We wanted to determine whether fresh vegetable intake serves as an additional source of human methanol. To that end, we compared the methanol content in the plasma of healthy volunteers after vegetable (Chinese cabbage, *Brassica rapa pekinensis*) and meat (turkey) intake. Tests on 15 individuals showed that fasting blood samples contained approximately 168 $\mu\text{mol/L}$ methanol (Fig. 1). However, 3 h after fresh salad consumption, the methanol content increased statistically significantly up to 225 $\mu\text{mol/L}$. However, the content was at least 100 times lower than harmful methanol concentrations [56]. An analysis using an unpaired, two-tailed Student's *t*-test confirmed a statistically significant difference in methanol content between the control and fresh salad intake groups. Turkey meat intake had no effect on the methanol content in human plasma. We concluded that fresh vegetable intake increases the physiological methanol content in human blood.

Subsequently, we compared the gene expression profile of the peripheral leukocytes of healthy volunteers after vegetable and meat (turkey) intake. Biologically, the increased methanol content in the blood plasma after fresh vegetable intake should lead to the up- or downregulation of human MRGs in these cells. To confirm this prediction, we studied changes in the expression patterns of the MRGs by performing quantitative real-time PCR (qRT-PCR) to determine the mRNA levels in isolated human leukocytes. Fresh salad intake resulted in a suppression of *hGAPDH* and *hSNX27* mRNA, whereas the *hTax1BP1* and *hCycA2* mRNA levels had not changed (Fig. 2A). A different MRG mRNA profile was observed after the meat diet (Fig. 2B). Turkey meat intake stimulated the accumulation of all of the MRGs. The biological meaning of this

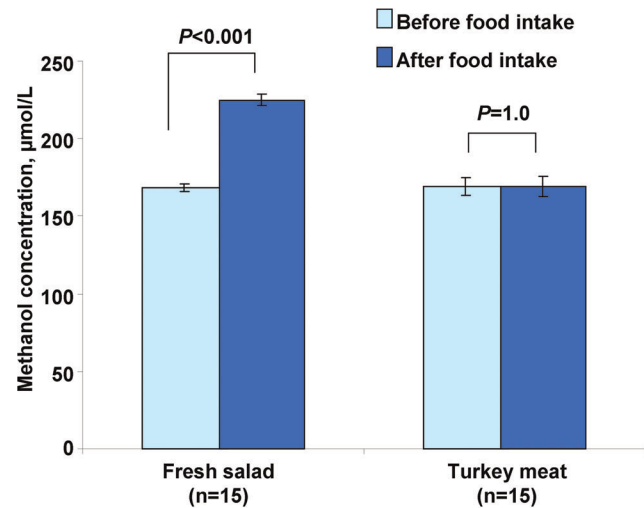


Figure 1. Methanol content in the plasma of volunteers 3 h after fresh salad or turkey meat intake. The data obtained in May 2011 are presented as the means \pm SE. Student's *t*-test *P*-values to determine the statistical significance of the differences in methanol content before and after food intake are indicated. doi:10.1371/journal.pone.0036122.g001

phenomenon is unclear, but gene expression in peripheral leukocytes could potentially be used as a marker of MRG expression in response to diet. We concluded that MRG mRNA accumulation in human leukocytes is sensitive to changes in the physiological methanol content in human blood plasma.

Methanol generated in the gastrointestinal tract of mice induces the up- and downregulation of MRG mRNA in the mouse brain

To support our data regarding MRG responsiveness to increases in physiological methanol, we used an experimental mouse model. In natural conditions, the pectin/PME complex is a source of methanol. To approach the question of whether ingesting pectin/PME complex-containing food generates methanol in the mouse gastrointestinal tract, we first tested PME activity in different plant preparations. To that end, we used a gel diffusion assay based on the increased binding of ruthenium red to pectin as the number of methyl esters attached to the pectin decreases [36,98]. The diameters of the stained zones decreased with an increasing percentage of pectin esterification, which allowed for the quantification of PME activity. Figure 3A shows that extracts of citrus pectin (Nittary Pharmaceuticals, VitaLine,

Table 1. Methanol-induced ESTs from HeLa cells.

Functional annotation	Matching with	EST clones (n)	E-value	Gene bank accession number
Glyceraldehyde 3-phosphate dehydrogenase (GAPDH)	Homo sapiens Glyceraldehyde 3-phosphate dehydrogenase	2	3.6e-165	AY340484
Tax1 (human T-cell leukemia virus type I) binding protein 1 (Tax1BP-1)	Homo sapiens cDNA FLJ95049 encoding Tax1 (human T-cell leukemia virus type I) binding protein 1	1	1e-180	AK314292
Human sorting nexin family member 27 (hSNX27)	Homo sapiens protein associated with schizophrenia and a gene encoding the same (DD149415)	1	1.4e-142	DD149415
Human cyclin A2	Homo sapiens cyclin A2, mRNA	1	1.7e-61	X51688

doi:10.1371/journal.pone.0036122.t001

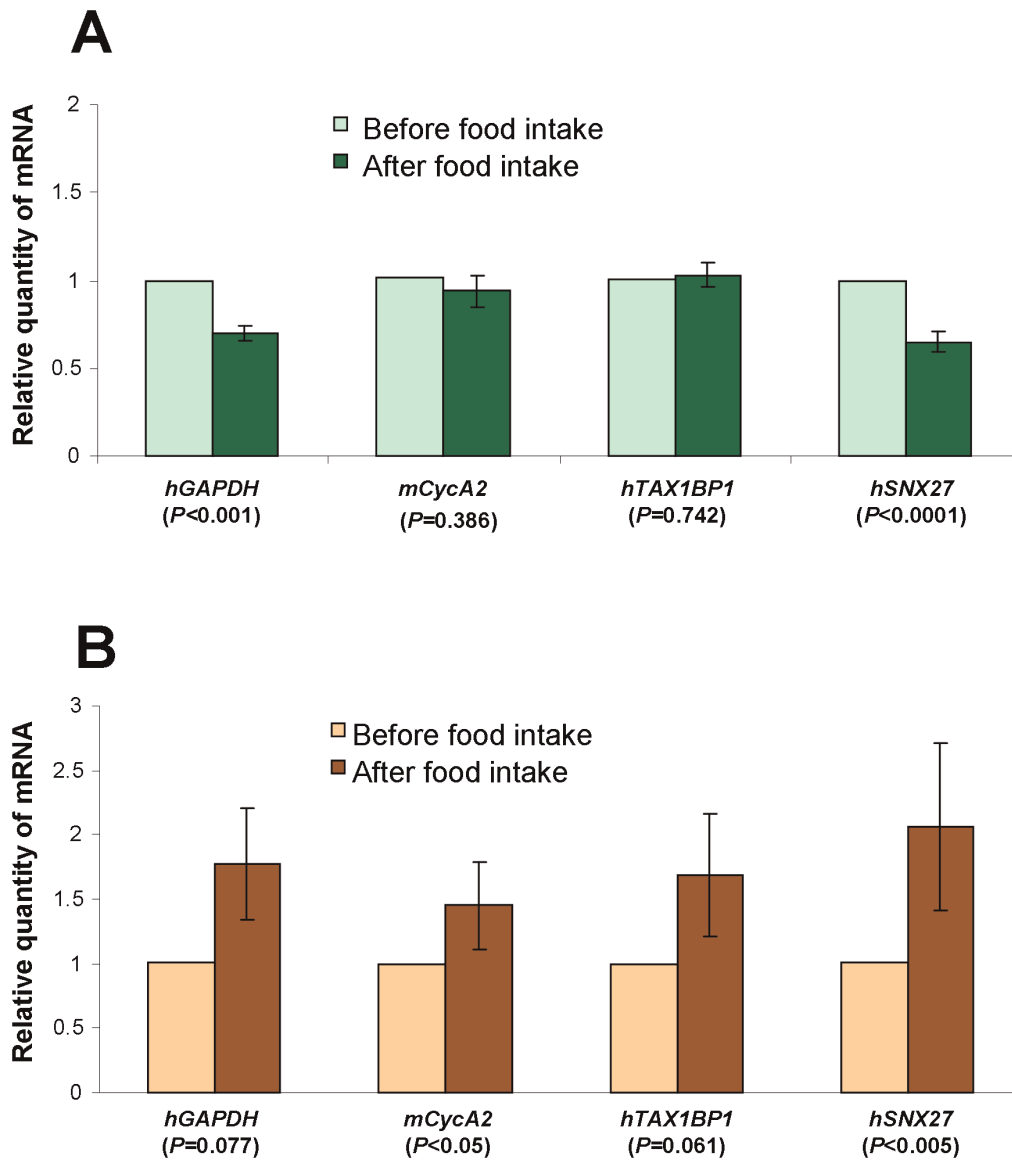


Figure 2. Plant-generated methanol influences gene expression in human leukocytes. (A, B) Influence of fresh salad (A) and turkey meat (B) intake on human blood leukocyte gene transcription as determined by qRT-PCR. The relative quantities of mRNA 3 h after food intake was normalized to the mRNA levels before food intake. Student's *t*-test *P*-values are indicated. doi:10.1371/journal.pone.0036122.g002

Inc.) contained high PME activity (~ 13 nkatals/mg protein) (wells #1–3), and this activity was significantly lower after heating (70°C , 10 min) (wells #4–6). Significant PME activity (~ 20 nkatals/mg protein) was revealed in the cell wall fractions of fresh cabbage heads (*Brassica oleracea*) (wells #10–12). Sauerkraut (wells #13–15), the cell wall supernatant fraction of sauerkraut (well #17), and even sauerkraut brine (#16) retained PME activity. On the other hand, the extracts of carrot (wells #7–9), dried plum (prune) (wells #18–20), and red beet (wells #21–23) did not have PME activity. Because the *B. oleracea* PME activity varied from sample to sample, we used the VitaLine citrus pectin preparation (lot Z1437) for additional studies. Next, gas chromatography was used to analyze the capacity of citrus pectin(PME+) for generating methanol. Figure 3B shows that the incubation of a water suspension of pectin(PME+) at 28°C resulted in methanol production, while pectin (cat. # P9135, Sigma), which is designated as pectin(PME–), demonstrated negligible methanol generation activity.

An analysis using an unpaired, two-tailed Student's *t*-test confirmed a statistically significant difference in methanol production between the control and the pectin(PME+) sample. We concluded that pectin(PME+) was active in methanol production *in vitro*.

To approach the question of whether the consumed vegetable (pectin/PME complex) is a source of methanol in mouse blood, we administered pectin(PME+) via a feeding tube into the stomach of mice and monitored the appearance of methanol in the blood stream by gas chromatography. The control group received a 0.5% glucose solution, pectin(PME–) or water. The methanol content in the mouse plasma increased drastically 10 min after pectin(PME+) administration then dropped slowly (Fig. 4). Methanol ingestion increased its content in plasma for 1 h and decreased to background level 2 h after injection into the stomach (Fig. S5). Pectin(PME–) resulted in a small increase in methanol content only 10 min after administration, while the water control had no

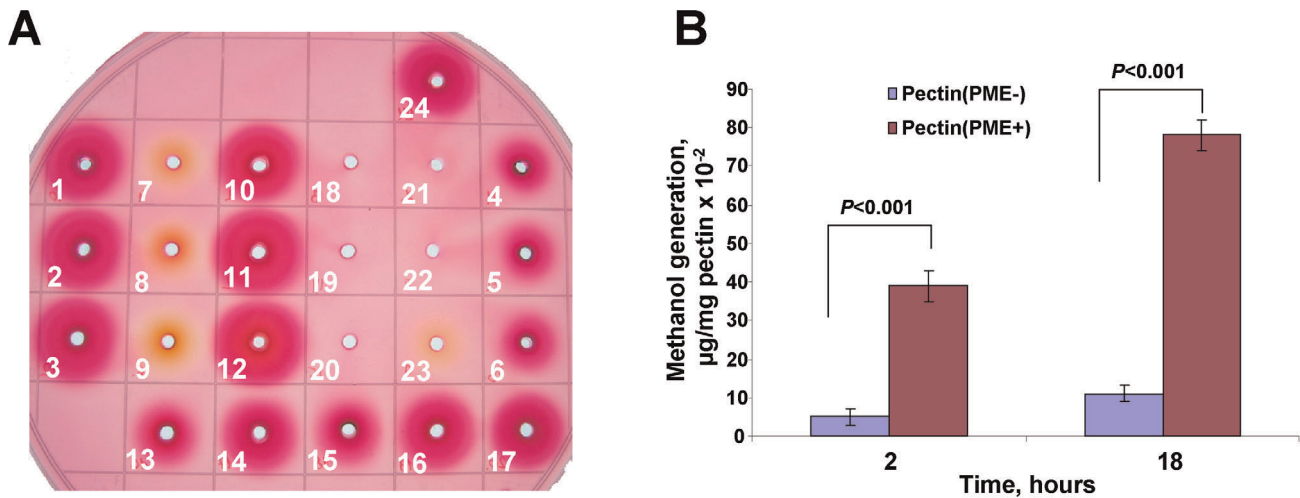


Figure 3. Citrus pectin preparation contains methanol-generating PME. (A) Detection of PME activity in plant material. Visual detection of PME activity in agarose gels containing 90% methylesterified pectin and stained by ruthenium red. The wells were loaded with citrus pectin (Nittary Pharmaceuticals, VitaLine Inc.) extract before (1–3) and after (4–6) heating (70°C, 10 min), the cell wall extract of carrot (7–9), cabbage head (*Brassica oleracea*) (10–12), sauerkraut (13–15), sauerkraut brine (16), the cell wall supernatant fraction of sauerkraut (17), the cell wall extract of dried plum (prune) (18–20) and red beet (21–23). Well #24 was loaded with pectinesterase from orange peel containing 20 nkatal PME. Plant material was extracted with Na-citrate buffer, pH 7.0, without NaCl (1, 4, 7, 10, 13, 18, 21) or with 0.15 M (2, 5, 8, 11, 14, 19, 22) or 1 M (3, 6, 9, 12, 15, 16, 17, 20, 23, 24) NaCl. (B) citrus pectin(PME+) generates methanol. The methanol content in the pectin suspension in water after a 2-h and an 18-h incubation at 28°C. The data represent five independent experiments, and the standard error bars are indicated. Student's *t*-test *P*-values are indicated. doi:10.1371/journal.pone.0036122.g003

influence during the course of observation. We concluded that the pectin/PME complex generated methanol in the gastrointestinal tract of mice.

We validated the changes in expression of the mouse counterpart SSH-selected genes by performing qRT-PCR determination of mRNA levels in different organs in mice after the ingestion of methanol-producing pectin containing PME [pectin(PME+)]. The expression patterns of the four selected genes were studied in the organs of the mice 2 h after methanol and

pectin(PME+) ingestion. *mGAPDH* gene expression drastically increased in the brains (Fig. 5D) of methanol- and pectin(PME+)-fed mice, whereas no increases in gene expression levels were observed in the livers (Fig. 5A), hearts (Fig. 5B) and spleens (Fig. 5C) of these mice compared to those treated with water. Similar to *mGAPDH*, an analysis of the *mTax1BP1* (Fig. 6A) and *mSNX27* (Fig. 6B) genes showed that expression was increased in mouse brains after methanol and pectin(PME+) ingestion. *mCycA2* expression was dependent on methanol and pectin(PME+) ingestion but had a more complicated profile (Fig. 6C). The accumulation of this mRNA in the livers, hearts, and spleens increased, while in the brain it was drastically suppressed. We concluded that methanol generated in the mouse gastrointestinal tract can regulate MRG mRNA accumulation in the brain.

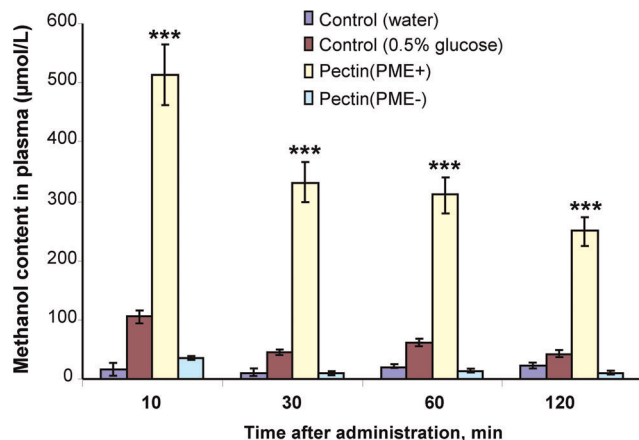


Figure 4. Methanol content in mouse serum 2 h after direct administration of pectin into the stomach. The mice were randomly divided into groups of ten. Each mouse in the treatment groups received 20 mg of pectin(PME+) or pectin(PME-) directly into the stomach by gavage. After 10, 30, 60 and 120 min, a blood sample was obtained and analyzed for methanol content by gas chromatography. The control groups received water or 0.5% glucose solution. The data represent five independent experiments, and standard error bars are indicated. ***, *P*<0.001 (Student's *t*-test). doi:10.1371/journal.pone.0036122.g004

Methanol emitted by wounded plants directs mouse locomotor behavior during exploration

Earlier, we showed that gaseous methanol emitted by wounded plants can serve as a signal to induce defense reactions in neighbors [50]. To address the question of whether methanol functions as a signaling molecule in plant-animal communication, we studied the behavior of mice following the inhalation of vapors from wounded leaves. To that end, we used *B. rapa pekinensis* leaves rubbed with an aqueous suspension of Celite as an abrasive and loaded these leaves into a container with a flow-through setup in which the mice breathed the vapors from the damaged leaves (Fig. 7A). Leaf wounding resulted in a 10-fold increase in methanol emission (Fig. 7B) and increased the methanol content in the blood plasma samples from the mice (Fig. 7C). Subsequently, we used an adapted Y-maze (Fig. 8A) and measured the locomotor behavior of the mice during exploration in two-choice assays. We recorded the number of visits and total time a mouse spent on each side of the Y-maze as commonly assessed in preference tests. Motions that resulted in visiting one of the odor sources in the sides (L or R) of the Y-maze and stalling there for 20–25 s were recorded as choices. Motion cessation in other parts (L, R and S) of the Y-

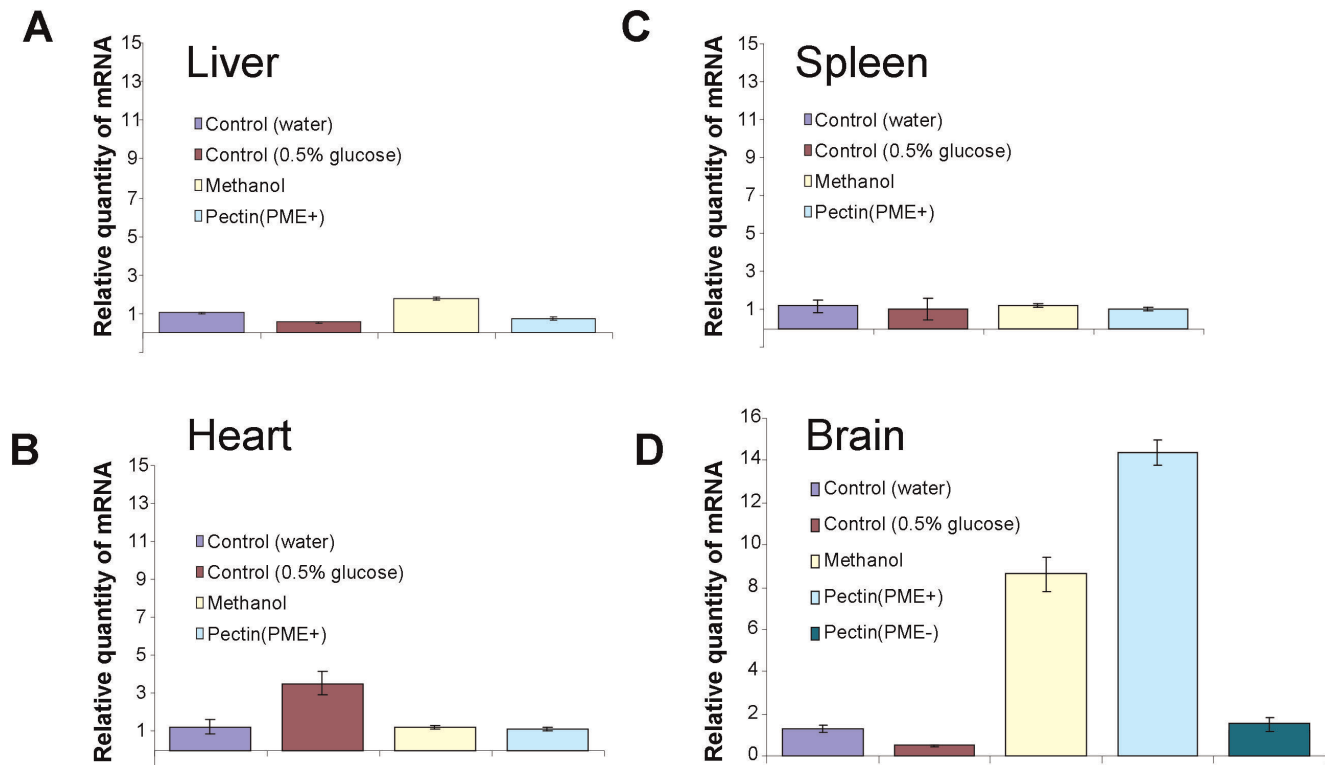


Figure 5. Relative quantity of *mGAPDH* mRNA in mouse organs after methanol and pectin(PME+) ingestion as determined by qRT-PCR: A – liver, B – heart, C – spleen and D – brain.
doi:10.1371/journal.pone.0036122.g005

maze in which there were no odor sources was recorded as no choice. The results demonstrated that mice preferred the odors from wounded leaves (70%, $P < 0.01$, χ^2 -test) to those of intact ones (Fig. 8B, bar #1) and preferred cotton wool wetted with methanol (73%, $P < 0.01$, χ^2 -test) to water (Fig. 8B, bar #3). Previously [50], our gas chromatography analysis revealed the emission of *cis*-3-Hexen-1-ol, which is a representative of green leaf volatiles (GLVs), in the headspace of wounded leaves. We tested *cis*-3-Hexen-1-ol and showed that mice did not prefer this GLV to water vapors (Fig. 8B, bar #5). Moreover, a direct comparison of methanol and *cis*-3-Hexen-1-ol revealed a mouse preference for methanol (Fig. 8B, bar #9). An analysis using the χ^2 -test confirmed a statistically significant difference in the preference of mice to methanol over *cis*-3-Hexen-1-ol. We did not detect methyl jasmonate in the headspace of wounded leaves [50]. Ethylene emission was detected, but there was no statistically significant difference in ethylene emission between the control and wounded leaves [50]. Nevertheless, we tested methyl jasmonate (Fig. 8B, bar #4) and ethylene (Fig. 8B, bar #6), and the mice did not reveal any preference for these compounds over water vapors. The mice chose equally between water vapors (Fig. 8B, bar #2). Furthermore, the mice did not prefer wounded (Fig. 8B bar #7) or intact (Fig. 8B, bar #8) *B. rapa* leaves to methanol vapors.

We concluded that the methanol emitted by plants may function as an attractant for mice.

We then assessed the gene expression profile in the mouse brain after methanol inhalation. We studied the changes in the MRG expression patterns by determining mRNA levels in isolated mouse brain tissues by qRT-PCR. After the inhalation of methanol or wounded leaf vapors, the mRNA levels of *mGAPDH*, *mTax1BP1* and *mSNX27* increased in mouse brains, whereas

mCycA2 mRNA was suppressed drastically (Fig. 9). It is worth emphasizing that the changes in MRG mRNA levels after the inhalation of methanol or wounded leaf vapors were similar to those in the brain tissue of mice after pectin(PME+) complex ingestion (Figs. 5 and 6). We concluded that the methanol emitted by plants can be an attractant to mice and may induce the up- and downregulation of MRGs in mouse brain tissue.

Discussion

Many plants respond to wounding from pathogen and herbivore attacks by releasing airborne volatile compounds that serve as plant defenses involved in within-plant and plant-to-plant signaling, attracting natural enemies of the herbivores and repelling other herbivores [99]. The reality of “talking trees,” which describes plants’ expression of resistance mediated by VOCs from neighboring plants, is now well described [100]. The idea of “eavesdropping” has recently explained the evolutionary benefits and disadvantages for plant emitters, which mainly use VOCs for within-plant purposes [101]. Chemical signals, such as ethylene, methyl salicylate, and methyl jasmonate, induce resistance to many pathogens. Pectin and PME form a ubiquitous multifunctional enzymatic complex in the plant cell wall and generate methanol by pectin demethylation. Since 1661, when Robert Boyle [102] described methanol as a “sowrish spirit” (wood spirit) using the pyrolysis of boxwood and distillation, the function of methanol in plant and animal life has been unclear. Although emissions from volcanoes, generation from H_2 and CO_2 in seafloor hydrothermal systems [103–105] and the combustion of biomass all contribute to terrestrial atmospheric methanol, PME-mediated emissions from plants are likely the largest source of methanol in the atmosphere [43–46]. For a long time, gaseous

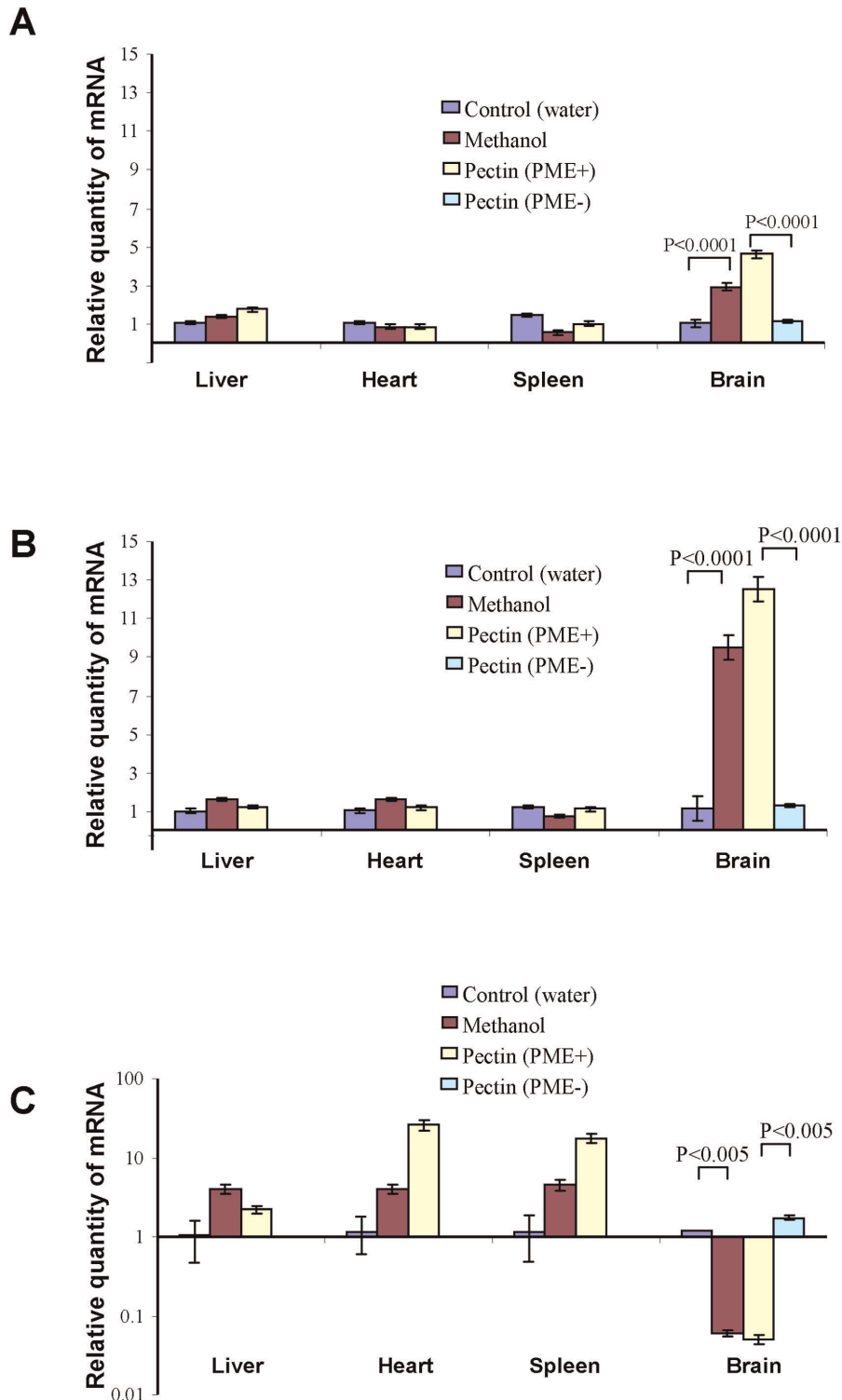


Figure 6. Relative quantity of (A) *mTax1BP1*, (B) *mSNX27* and (C) *mCycA2* mRNA in mouse organs as determined by qRT-PCR after methanol and pectin(PME+) ingestion. The *mCycA2* data (C) are plotted on a semi-logarithmic scale. The standard errors and Student's *t*-test *P*-values are indicated.

doi:10.1371/journal.pone.0036122.g006

methanol was considered a biochemical “waste product” [45–46]. Recently [50], we have studied the effects of PME-generated methanol from plants (“emitters”) on the defensive reactions of plants (“receivers”). It was shown that increased methanol

emission from PME-transgenic or mechanically wounded non-transgenic plants retards the growth of the bacterial pathogen *Ralstonia solanacearum* in neighboring “receiver” plants. Antibacterial resistance was accompanied by the upregulation of genes

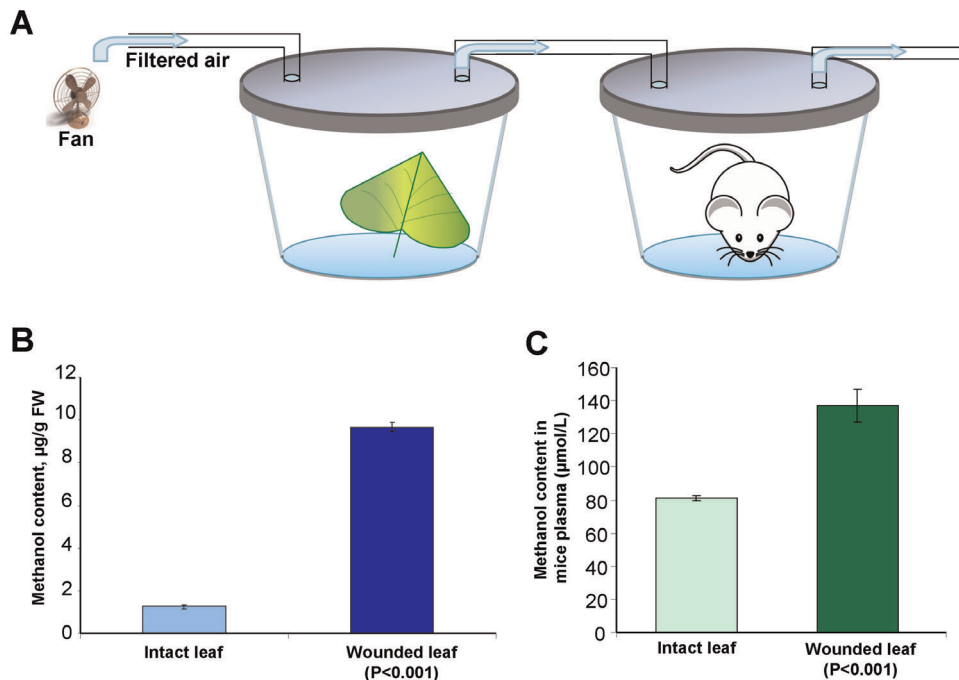


Figure 7. Inhalation of vapors from wounded leaves or methanol increases methanol content in mouse blood. (A) Experimental set-up for the inhalation of vapors from intact and wounded leaves by mice. A 5-l hermetically sealed vessel with five female mice was attached to a 150-ml flow-through jar supplied with filtered air (at a rate of 83.3 ml/min) and containing intact or wounded leaves from the *B. rapa pekinensis* (approximately 1 g). (B) Methanol emission by wounded leaves. *B. rapa* leaves were rubbed with Celite, and leaf samples (approximately 1 g) were loaded into hermetically sealed plastic jars with a drop of water (300 μl). After incubation for 180 min, the leaves were removed, and the methanol in the water drop was measured by gas chromatography. The standard errors and Student's *t*-test *P*-value are indicated. (C) Methanol content in the blood of female mice after a 90-min exposure to air with vapors from intact and wounded leaves. The standard errors and Student's *t*-test *P*-value are indicated.

doi:10.1371/journal.pone.0036122.g007

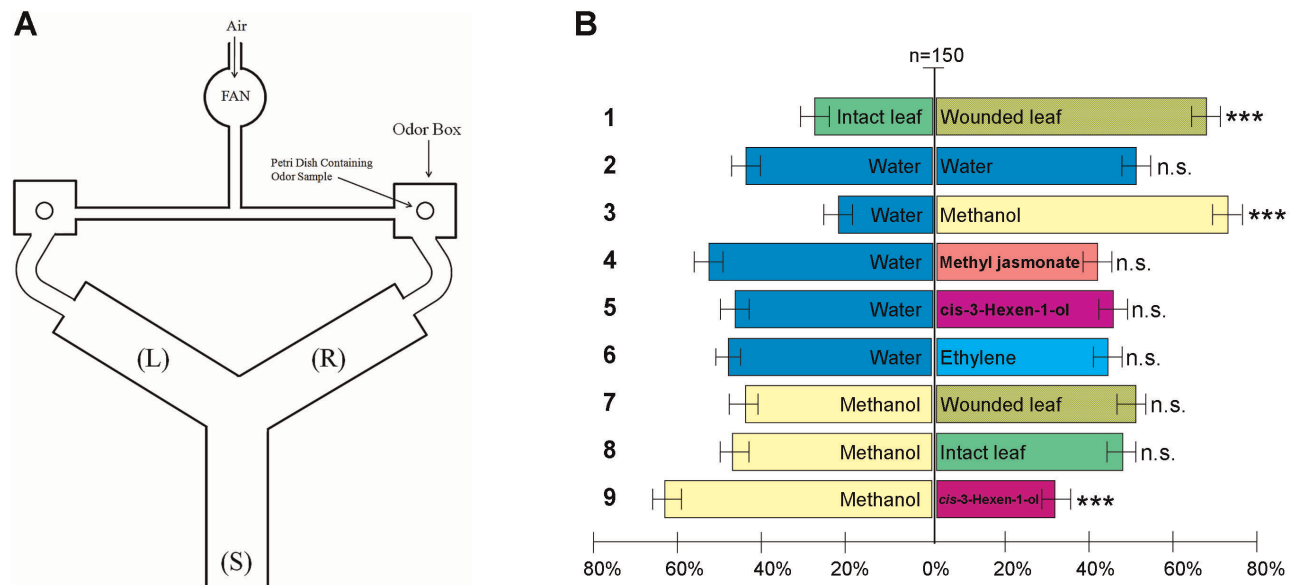


Figure 8. Mice prefer the odor of methanol and volatiles from damaged *B. rapa* leaves to odors from undamaged leaves. (A) Experimental set-up for the two-choice test based on a Y-maze. Air drawn by a fan through a tube is conducted through the left and right odor compartments. The air currents then pass to the left (L) and right (R) arms of the maze, which was fitted with a starting compartment (S). (B) Response of mice to different VOCs, vapors from wounded leaves and methanol compared to intact leaves and water-soaked cotton wool in the two-choice set-up. In total, 150 mice were tested per combination. The figure shows the percentages of mice selecting the odor source. Asterisks indicate a statistically significant difference within a choice. Arabic figures (on the left) designate the bar orders. χ^2 -test: *** $P < 0.01$, n.s., not significantly different.

doi:10.1371/journal.pone.0036122.g008

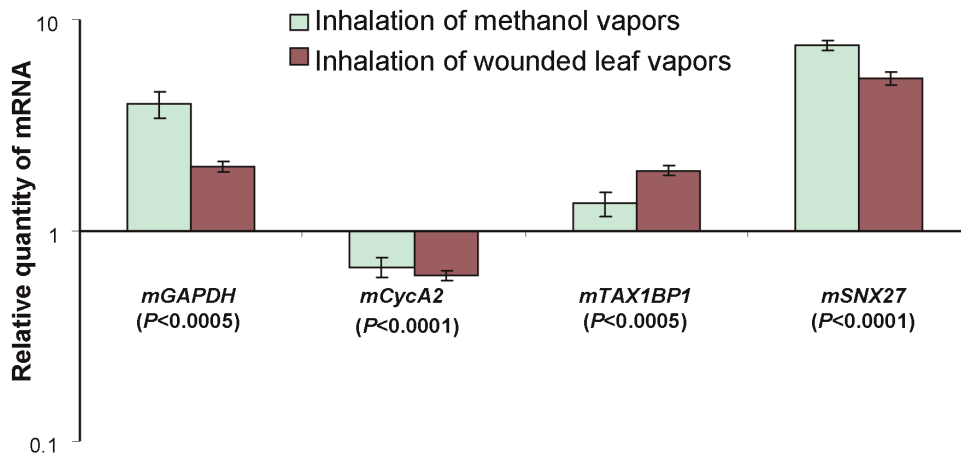


Figure 9. Plant-generated methanol influences gene expression in the mouse brain. Influence of vapors from wounded leaves and methanol on brain. MRG transcriptional activity as determined by qRT-PCR. The data are plotted on a semi-logarithmic scale. Relative quantities of mouse brain and leukocyte mRNA were normalized to the corresponding mRNA from control mice. doi:10.1371/journal.pone.0036122.g009

controlling stress and cell-to-cell communication in the “receiver”. We concluded that methanol is one of the VOCs involved in within-plant and plant-to-plant signaling.

Here, we used HeLa cancer cells, which have been shown to have no ADH activity [91–93] and, therefore, cannot ferment methanol to produce formaldehyde. We constructed SSH cDNA libraries from HeLa cells exposed to methanol and isolated MRGs (Table 1). Moreover, we validated the MRG identification using leukocytes from healthy volunteers and showed differences in MRG expression in leukocytes following vegetable intake, which resulted in increases in methanol content (Figs. 1 and 2).

To understand the physiological role of methanol in animals, we showed that methanol generated by the pectin/PME complex (Fig. 3) may be involved in mammalian gene regulation. Methanol and pectin(PME+) ingestion resulted in the rapid appearance of methanol in mouse plasma (Fig. 4) and was accompanied by the accumulation of *mGAPDH* (Fig. 5), *mTax1BP1*, and *mSNX27* (Fig. 6) mRNA in the brain. *GAPDH* has often been referred to as a “housekeeping” gene and is used to standardize northern blots. Over the last two decades, however, a number of novel functions for *GAPDH* beyond glycolysis have been described, including its participation in nuclear trafficking and apoptosis [106]. Methanol-mediated *GAPDH* mRNA accumulation in the brain suggests a signaling function for methanol. This idea was supported by the simultaneous increase in the accumulation of *mTax1BP1* and *mSNX27* mRNA (Fig. 6) because recent data showed the involvement of *Tax1BP1* in transcription regulation [95] and the involvement of *SNX27*, which is a member of the human sorting nexin family, in signal transmission [107,108]. The effects of methanol in mouse are likely to involve many different aspects or features, including cell cycle regulation [109] as suggested by the accumulation of *mCycA2* mRNA (Fig. 6).

Here, we also showed that leaf wounding caused enhanced production of gaseous methanol and that inhaling these vapors resulted in increased methanol content in the mouse plasma (Fig. 7) and the modification of brain MRG mRNA levels (Fig. 9). We suggest that methanol can function as an attractant for mammals. In the wild, mice are primarily herbivores and eat whatever vegetation is available, including fallen seeds and fruits accumulating ethanol and methanol [110]. We propose that the methanol content in the mouse bloodstream would increase very slightly during the search for wounded plants as food but that the increase

would be enough to induce the correct choice. It is worth emphasizing that short-chain alcohols, including methanol, were greatly preferred by insects and bark beetles (*Hylurgops palliatus*, *Tomicus piniperda*, and *Trypodendron domesticum*), while longer-chain alcohols were not attractive [111]. We suggest that mice, similar to insects, can detect this signal. In line with the hypothesis that mammals may “eavesdrop” on plant-to-plant communication signals, we showed that mice prefer the odor of methanol to other plant volatiles in a Y-maze setup (Fig. 8).

The increase in the methanol concentration following fruit and juice consumption suggests the participation of pectin/PME in methanol generation in humans. However, the high methanol content in the plasma of fasted volunteers (Fig. 1) could be explained by the participation of microbial inhabitants in endogenous methanol generation. In our experiments, glucose increased the methanol content by 5-fold compared to the water control (Fig. 4), which suggests that glucose may stimulate methanol production by the microbial inhabitants of the mouse gastrointestinal tract. The gut microbiota is likely to be an underestimated source of endogenous methanol. The second source of methanol in mammalian organism is the brain, in which intracellular metabolic processes involving SAM and protein methyltransferases occur [70,80,81,85,89,90]. Glucose-mediated increases in methanol (Fig. 4) could be explained by increased SAM production and the subsequent methanol generation. However, in our experiments, SAM ingestion did not increase the methanol content in the mouse bloodstream (data not shown), which is in accordance with the data from the experiments on volunteers [112].

We suggest that the pectin/PME complex in the diet and the generation of physiological methanol may have a positive role in human health. This hypothesis is based on indirect evidence. Studies have suggested a beneficial effect of plant food intake on human health [113,114], the prevention of cancer [115] and cardiovascular diseases [115,116], and the data are consistent with the proverb “an apple a day keeps the doctor away.” In addition to a substantial amount of phytochemicals, salts, minerals, and vitamins, fruits and vegetables contain a significant amounts of pectin, which might be a substrate for gastrointestinal microbial inhabitants and methanol production. Pectin has been shown to have a role in the prevention of heart disease and to exert a protective effect in hypertension and diabetes [117–120]. Pectin-

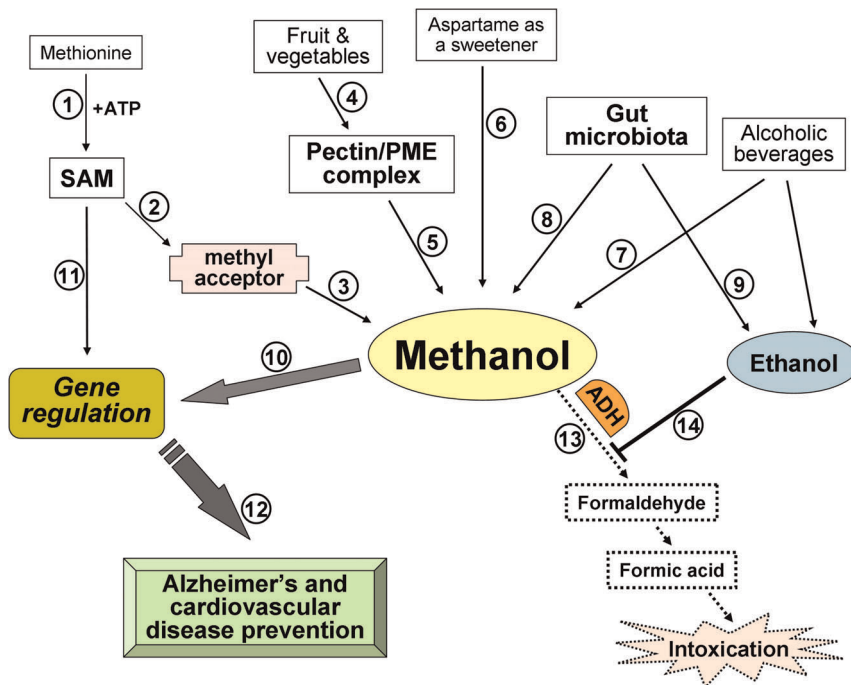


Figure 10. Biogenesis of physiological methanol and its relationship with ethanol. See the text for explanation.
doi:10.1371/journal.pone.0036122.g010

rich foods and isolated viscous dietary fibers have demonstrated a cholesterol-lowering effect in humans [121,122] and the reduction of atherosclerosis lesions in an animal model [123]. In addition, a substantial amount of research has suggested that fruit pectin has a role in the prevention of cancer progression and metastasis [124–129]. SAM is used as a dietary supplement for the treatment of many medical disorders, including depression. Interestingly, recent findings indicate a critical role for SAM in the maintenance of neuronal health, suggesting a possible role for SAM as a neuroprotective dietary supplement for Alzheimer's disease patients [130]. Although SAM intake did not result in methanol formation [112], we hypothesize a role for methanol in the maintenance of neuronal health.

Considering the proposed signaling function for methanol, we should estimate the toxic consequences of exogenous methanol intake and the production of endogenous methanol in humans. Methanol itself is harmless, but it is a “Trojan horse” for toxic formaldehyde [131,132], the formation of which is catalyzed by ADH. Formaldehyde is further oxidized to formic acid by formaldehyde dehydrogenase. This conversion is very rapid, and formaldehyde has a half-life of only 1–2 min with subsequent formic acid formation [55]. Human ADH exists in multiple forms as a dimer and is encoded by at least seven different genes [133]. There are five classes (I–V) of alcohol dehydrogenase, but the primary hepatic form in humans is class 1 (ADH 1) [134]. Because ADH 1 evolved to utilize ethanol, ethanol functions as a powerful competitive inhibitor at low concentrations [135], and the enzyme has a strong preference for converting ethanol to acetaldehyde over the conversion of methanol to formaldehyde [136]. It appears that the average person may typically have endogenous ethanol in their breath [75,76] and blood [137] that is likely produced by gut fermentation [138]. Another SIFT-MS study of breath ethanol for the same cohort of volunteers suggested that methanol and ethanol are formed in the body from different substances and/or different processes [75]. Very low levels of ethanol in the bloodstream

would substantively prevent all formaldehyde production from endogenous and dietary methanol in humans. It was hypothesized [53] that the formaldehyde produced by the metabolism of dietary and endogenous methanol by ADH I would have a role in many diseases if ethanol does not act as a competitive inhibitor. Ethanol protection from formaldehyde production may explain the U-shaped curve describing the dependence on alcohol consumption and cardiovascular diseases [53,138,139]. Figure 10 summarizes the data on methanol and endogenous ethanol biogenesis, illustrating the putative positive role of physiological methanol and ethanol in human health. The methyl group donor, SAM, is synthesized via the catalytic activity of methionine adenosyltransferase, which transfers the adenosyl group of ATP to methionine (step 1). S-adenosylhomocysteine is formed after SAM transfers a methyl group to a methyl acceptor (step 2), such as proteins, phospholipids, DNA, RNA and other molecules, including dopamine [140]. The beneficial effects of SAM on health and its ability to reduce the progress of Alzheimer's syndrome [141–144] suggest its participation in gene regulation (step 11). Methyl esters, such as carboxyl methyl esters, are unstable and are readily hydrolyzed in neutral and basic pH conditions or by methyltransferase to produce methanol [89,90] (step 3). Other sources of methanol are the human diet supplying the methanol-generating pectin/PME complex from fruits and vegetables (steps 4,5), aspartame as a synthetic nonnutritive sweetener (step 6) and alcoholic beverages (step 7). The human gut microbiota is a putative source of methanol (step 8) and takes part in the generation of human endogenous ethanol (step 9). We suggest that endogenous and dietary methanol may be involved in gene regulation (step 10) and may have beneficial effects on human health (step 12). Although ADH may convert methanol into toxic products (step 13), we suggest that physiological ethanol in the bloodstream would substantively prevent all formaldehyde production from endogenous and dietary methanol in humans (step 14).

Collectively, our results indicate a cross-kingdom signaling function for methanol generated by wounded plants and in the gastrointestinal tract of mice and humans. The mechanisms through which methanol at physiologically relevant concentrations has beneficial or detrimental effects in humans remain largely undefined but include the modulation of signaling and gene regulation. Advances in the modeling and analysis of food methanol intake will extend our knowledge of methanol's role in health and disease, allowing the customization of existing and future therapeutic and prophylactic modalities.

Materials and Methods

Gel diffusion assay for the quantification of PME activity

PME activity in plant samples was quantified by a gel diffusion assay as described by Chen and Citovsky [36] and Downie *et al.* [98]. Briefly, the tissue samples were flash-frozen in liquid nitrogen and homogenized in 1 ml of extraction buffer (0.15 M, 1 M or without NaCl, 2.5 mM phenylmethylsulfonyl fluoride, 0.1 M citrate, 0.2 M sodium phosphate, dibasic, pH 7.0). The homogenate was centrifuged at 16 000 g at 4°C, and the protein concentration of the recovered supernatant was determined by the Bradford method [145] and adjusted to the same value for all samples. These cell extracts (10 μ l) were then loaded into 2-mm round wells in a 2% (w/v) agarose gel containing 0.1% of 90% esterified pectin (Sigma-Aldrich) in a Petri dish. The gels were incubated for 16 h at 28°C, rinsed with water, and stained for 45 min at room temperature with 0.05% (w/v) ruthenium red dye (Sigma-Aldrich), which stains de-esterified pectin [98]. The diameter of each stained zone was measured to the nearest 0.1 mm with calipers. The amount of PME activity in nkatals was calculated based on the standard curve of the log-transformed enzyme activity versus the stained zone diameter generated using a commercial-grade orange peel PME (Sigma-Aldrich, USA).

Pectin administration into mice

The structure of this study and the animal experimental procedures were approved by the ethical committee of the N. N. Blokhin National Cancer Research Center, Moscow, Russia. The mice were fed a cereal-based diet, which consisted of 12.7% protein, 5.6% fat and 54.1% carbohydrate with a total fiber content of 3.7%. The diet was supplemented with a vitamin-mineral premix according to the recommendation of the American Institute of Nutrition (AIN-93M diet). The mice were randomly divided into five groups of ten mice. Each mouse in the treatment groups directly received 20 mg pectin(PME+) (Nittary Pharmaceuticals, VitaLine, Inc., USA), pectin(PME-), 200 μ l 0.5% glucose solution or 200 methanol (0.375 mol/L) into the stomach by gavage. After 10, 30, 60 or 120 min, blood samples (50 μ l) were isolated from the tail vein of the mice. Samples were incubated at 4°C for 2 h for cell sedimentation then an equal volume of 10% trichloroacetic acid (TCA) was added to plasma. The mixture was incubated for 20 min on ice and then centrifuged for 10 min at 16 000 g. Finally, the supernatant was analyzed for methanol content by gas chromatography.

Two-choice experiments in mice using a Y-maze

The experimental set-up for the two-choice test was based on a Y-maze [146] with two arms, each containing Petri dishes with cotton wool soaked with 200 μ l methanol, 1 μ l *cis*-3-Hexen-1-ol and methyl jasmonate (odorized compartment) or 200 μ l of distilled water (control compartment). Ethylene was obtained by reacting 10 M KOH with ethephon (Sigma-Aldrich, USA). Air drawn by a fan is conducted through the left and right odor

compartments via a tube of which the inlet is near the input vent supplying the laboratory. The air currents then pass to the left (L) and right (R) arms of the maze, which was also fitted with a starting compartment (S). All behavioral testing took place during the light phase. The locomotor behavior of the mice during exploration in the two-choice assays was measured. We recorded the following behaviors: the number of visits and the total time a mouse spent on each side of the Y-maze. Motions that resulted in visiting one of the odor sources in the one of sides (L or R) of the Y-maze and stalling there for 20–25 s were recorded as choices. Motion cessation in parts (L, R and S) of the Y-maze other than the odor sources was recorded as no choice. The odorant was randomly distributed in the right or left arm in each test. In total, 150 mice were tested per combination. The maze was carefully washed after each test. Mice were placed separately in the starting arm at the end of the stem and then allowed to move freely for 3 min. The movements of the mice were video recorded and analyzed with a video tracking system.

Volunteer experiments and mRNA isolation from human leukocyte

This research received approval of the Human Subjects Committee at the N. N. Blokhin National Cancer Research Center, Moscow, Russia. All participants signed Institutional Review Board-approved consent forms. The study included 15 unrelated healthy volunteers (male and female) aged 20–60 yr. A 5-ml blood sample was taken before and after the consumption of Chinese cabbage (200 g) or turkey meat (200 g). Volunteers fasted before sampling. Blood was collected in evacuated tubes containing K₃EDTA as an anticoagulant. Four volumes of RBC lysis-buffer (0.8% NH₄Cl, 0.2% NaHCO₃, 0.1 mM EDTA) were added to one volume of the whole blood. The solution was incubated 10 min, and leukocytes were sedimented by centrifugation (10 min, 1000 g). Subsequently, the pellet was washed two times with 2 ml 1 \times PBS and resuspended in 100 μ l 1 \times PBS. Total RNA was isolated from leukocytes using TriReagent (MRC, USA) according to the manufacturer's protocol. For the methanol measurements, blood samples without anticoagulant were incubated at 4°C for 2 h for cell sedimentation, and an equal volume of 10% TCA was then added to the plasma. The mixture was incubated for 20 min on ice and then centrifuged for 10 min at 16 000 g. Finally, the supernatant was analyzed for methanol content by gas chromatography.

Methanol measurements by gas chromatography

Methanol was measured in the headspace of intact or wounded leaves in hermetically sealed jars (water-drop set-up) or in glass flow chambers using a water sample as a trap as described earlier [50]. The water-drop set-up was achieved using hermetically sealed plastic jars (150 ml) with a drop of water (300 μ l). Methanol content was determined by gas chromatography on a capillary FFAP column (50 m \times 0.32 mm; Varian Inc., Lake Forest, CA, USA) in a Kristall 2000 gas chromatograph (Eridan, Russia). Liquid samples were measured under the following operating conditions: carrier gas, nitrogen; nitrogen flow, 30 ml/min; air flow, 400 ml/min; hydrogen flow, 40 ml/min; injected volume, 1 μ l; injector temperature, 160°C; column temperature, 75°C increased at 15°C/min to 150°C; retention time, 6.5 min; and flame ionization detector temperature, 240°C.

Construction of SSH cDNA libraries

RNA isolation and cDNA preparation. Total RNA was isolated from control and methanol-treated (75 mmol/L for 6 h)

HeLa cells following the LiCl method. mRNA was purified from the total RNA isolated using the PolyATtract mRNA Isolation System I (Promega, USA) following the protocol supplied along with the kit. Amplified ds cDNA was prepared from methanol-treated and control RNA using a SMART approach as previously described [147]. SMART Oligo II oligonucleotide and CDS primers (Table S1) were used for first-strand cDNA synthesis. In both cases, first-strand cDNA synthesis was performed using 0.3 µg RNA in a total reaction volume of 10 µl. 1 µl of 5× diluted first-strand cDNA was then used for PCR amplification with SMART PCR primers. 18 PCR cycles (each cycle included 95°C for 7 s, 65°C for 20 s, and 72°C for 3 min) for methanol-treated and control samples were performed. SMART-amplified cDNA samples were further digested by the *Rsa* I endonuclease.

Subtraction procedure. Subtractive hybridization was performed using the SSH method in both directions (methanol vs. control and control vs. methanol) as described [148]. Briefly, the following procedures were performed. For each direction, two tester populations were created by ligating different suppression adapters (Adapters 1 and 2R). These tester populations were mixed with 30× driver excess (driver cDNA had no adapters) in two separate tubes and were denatured and allowed to re-nature. After the first hybridization, the two samples were mixed and hybridized together. The subtracted cDNA was then amplified by primary and secondary PCR. For the primary PCR, 25 PCR cycles with PCR primer 1 were performed for the subtracted methanol cDNA, and 25 cycles were performed for the subtracted control cDNA. For the secondary (nested) PCR, 10 PCR cycles with Nested primers 1 and 2R were performed for both of the subtracted cDNA samples. To eliminate type II background from the SSH-generated libraries, the mirror orientation selection (MOS) method was used for both of the SSH subtracted libraries as described previously [149]. For the MOS PCR, 22 PCR cycles with the MOS PCR primer were performed for the subtracted methanol and control cDNA samples.

Construction of the subtracted library. The two subtracted cDNA samples enriched with differentially expressed sequences (methanol-specific and control-specific) that were obtained from the MOS PCR were used to construct the library. In each case, approximately 40 ng of the purified cDNA was cloned into the pAl16/17 vector (pUC base vector), which was then used for *E. coli* transformation. For both libraries, the white to blue colony ratio was 65:35.

Differential screening of subtracted libraries. 96 (one 96-well plate) randomly picked white clones from the tester methanol-specific library and 96 (one 96-well plate) randomly picked white clones from the driver control-specific library were used for differential screening. All plates were grown in 100 µl LB-Amp (75 µg/ml) media for 6 h at 37°C. One-microliter aliquots of each of the media were used for PCR amplification with pAl16/17 dir and pAl16/17 rev plasmid primers. The plates were subsequently diluted with 20% glycerol and stored at -70°C. 2 µl of each of the PCR-amplified inserts (approximately 100 µg DNA) was arrayed in a 96-well format onto duplicated nylon membranes and hybridized with P³²-labelled methanol- and control-subtracted cDNA probes.

Virtual northern blot analysis. Virtual northern blot analysis was performed to confirm the differential screening results. For the virtual northern blot analysis, SMART-amplified “driver” (methanol) and “tester” (control) unsubtracted cDNAs were resolved on agarose gels and transferred to Hybond-N membranes. Membranes were hybridized with P³²-labeled probes prepared from randomly selected differential clones that were identified by differential screening. The clones from the methanol-

subtracted library and the control-subtracted library were used for virtual northern blotting. Selected plasmids were purified and sequenced using pAl16/17 dir and pAl16/17 rev plasmid primers (Table S1).

qRT-PCR Analysis of Transcript Concentrations

RNA concentrations were determined using a Nanodrop ND-1000 spectrophotometer (Isogen Life Sciences). All RNA samples had a 260:280 absorbance ratio between 1.9 and 2.1.

cDNA was obtained by annealing 2 µg of denatured total RNA with 0.1 µg of random hexamers and 0.1 µg of Oligo-dT. The mixture was then incubated with 200 units of Superscript II reverse transcriptase (Invitrogen, USA) for 50 min at 43°C. The qRT-PCR was performed using the iCycler iQ real-time PCR detection system (Bio-Rad, Hercules, CA, USA). For the detection of target genes, the Eva Green master mix (Syntol, Russia) was used according to the manufacturer’s instructions. The thermal profile for EVA Green qRT-PCR included an initial heat-denaturing step at 95°C for 3 min and 45 cycles at 95°C for 15 s, an annealing step (Table S2) for 30 sec and 72°C for 30 sec coupled with fluorescence measurements. Following amplification, the melting curves of the PCR products were monitored from 55–95°C to determine the specificity of amplification. Each sample was run in triplicate, and a non-template control was added to each run. Target gene mRNA levels were calculated according to the equation proposed by Pfaffl [150]: $E_{\text{target}}\Delta C_t$ target (sample-reference). PCR efficiency (E) was calculated according to the equation $E = 10(-1/\text{slope})$ based on the standard curves. Target gene mRNA levels were corrected using corresponding reference genes.

Supporting Information

Figure S1 Amino acid sequence alignment of human and mouse GAPDH (accession numbers P04406 and P16858, respectively). Amino acid sequences were aligned using the AliBee program (http://www.genebee.msu.su/services/malign_reduced.html). Identical amino acid residues between the human and mouse proteins are marked by asterisks. Specific protein domains are underlined. (TIF)

Figure S2 Amino acid sequence alignment of human and mouse Tax1BP1 (accession numbers A4D196 and Q3UKC1, respectively). Amino acid sequences were aligned using the AliBee program (http://www.genebee.msu.su/services/malign_reduced.html). Identical amino acid residues between the human and mouse proteins are marked by asterisks. Specific protein domains are underlined. (TIF)

Figure S3 Amino acid sequence alignment of human and mouse SNX27 (accession numbers Q96 L92 and Q3UHD6, respectively). Amino acid sequences were aligned using the AliBee program (http://www.genebee.msu.su/services/malign_reduced.html). Identical amino acid residues between the human and mouse proteins are marked by asterisks. Specific protein domains are underlined. (TIF)

Figure S4 Amino acid sequence alignment of human and mouse CycA2 (accession numbers AAI04784.1 and NP_033958.2, respectively). Amino acid sequences were aligned using the AliBee program (http://www.genebee.msu.su/services/malign_reduced.html). Identical amino acid residues between the human and mouse proteins are marked by asterisks. (TIF)

Figure S5 Methanol content in mouse serum 2 h following direct stomach administration of methanol.

The mice were randomly divided into five groups of ten. Each mouse in the treatment group received 200 μ l methanol (0.375 mol/L) directly into the stomach, and 10, 30, 60, and 120 min later, blood samples were isolated and analyzed for methanol content by gas chromatography. (TIF)

Table S1 Oligonucleotides used for SSH. (DOC)**Table S2 Oligonucleotides used for qPCR.****References**

- Holopainen JK, Gershenzon J (2010) Multiple stress factors and the emission of plant VOCs. *Trends Plant Sci* 15: 176–184.
- Moura JC, Bonine CA, de Oliveira Fernandes Viana J, Dornelas MC, Mazzafera P (2010) Abiotic and biotic stresses and changes in the lignin content and composition in plants. *J Integr Plant Biol* 52: 360–376.
- Walley JW, Dehesh K (2010) Molecular mechanisms regulating rapid stress signaling networks in Arabidopsis. *J Integr Plant Biol* 52: 354–359.
- Arimura G, Ozawa R, Nishioka T, Boland W, Koch T, et al. (2002) Herbivore-induced volatiles induce the emission of ethylene in neighboring lima bean plants. *Plant J* 29: 87–98.
- Shulaev V, Silverman P, Raskin I (1997) Airborne signaling by methyl salicylate in plant pathogen resistance. *Nature* 385: 718–721.
- Baldwin IT (1998) Jasmonate-induced responses are costly but benefit plants under attack in native populations. *Proc Natl Acad Sci USA* 95: 8113–8115.
- Preston CA, Lewandowski C, Enyedi AJ, Baldwin IT (1999) Tobacco mosaic virus inoculation inhibits wound-induced jasmonic acid-mediated responses within but not between plants. *Planta* 209: 87–95.
- Velikova V, Fares S, Loreto F (2008) Isoprene and nitric oxide reduce damages in leaves exposed to oxidative stress. *Plant Cell Environ* 31: 1882–1894.
- Wendehenne D, Durner J, Klessig DF (2004) Nitric oxide: a new player in plant signalling and defence responses. *Curr Opin Plant Biol* 7: 449–455.
- Arimura G, Ozawa R, Shimoda T, Nishioka T, Boland W, et al. (2000) Herbivory-induced volatiles elicit defence genes in lima bean leaves. *Nature* 406: 512–515.
- Wu J, Baldwin IT (2009) Herbivory-induced signalling in plants: perception and action. *Plant Cell Environ* 32: 1161–1174.
- Ehltung J, Chowrira SG, Mattheus N, Aeschliman DS, Arimura G, et al. (2008) Comparative transcriptome analysis of Arabidopsis thaliana infested by diamond back moth (*Plutella xylostella*) larvae reveals signatures of stress response, secondary metabolism, and signalling. *BMC Genomics* 9: 154.
- Marković O, Jančević Š (2004) Pectin methylesterases: sequence-structural features and phylogenetic relationships. *Carbohydrate Res* 339: 2281–2295.
- Micheli F (2001) Pectin methylesterases: cell wall enzymes with important roles in plant physiology. *Trends Plant Sci* 6: 414–419.
- Bosch M, Cheung AY, Hepler PK (2005) Pectin methylesterase, a regulator of pollen tube growth. *Plant Physiol* 138: 1334–1346.
- Jolie RP, Duvetter T, Van Loey AM, Hendrickx ME (2010) Pectin methylesterase and its proteinaceous inhibitor: a review. *Carbohydr Res* 345: 2583–2595.
- Lionetti V, Raiola A, Camardella L, Giovane A, Obel N, et al. (2007) Overexpression of pectin methylesterase inhibitors in Arabidopsis restricts fungal infection by *Botrytis cinerea*. *Plant Physiol* 143: 1871–1880.
- Pelloux J, Rusterucci C, Mellerowicz EJ (2007) New insights into pectin methylesterase structure and function. *Trends Plant Sci* 12: 267–277.
- Raiola A, Lionetti V, Elmaghraby I, Immerzeel P, Mellerowicz EJ, et al. (2011) Pectin methylesterase is induced in Arabidopsis upon infection and is necessary for a successful colonization by necrotrophic pathogens. *Mol Plant Microbe Interact* 24: 432–440.
- Divol F, Vilaine F, Thibivilliers S, Amselem J, Palauqui JC, et al. (2005) Systemic response to aphid infestation by *Myzus persicae* in the phloem of *Apium graveolens*. *Plant Mol Biol* 57: 517–540.
- Körner E, von Dahl CC, Bonaventure G, Baldwin IT (2009) Pectin methylesterase NaPME1 contributes to the emission of methanol during insect herbivory and to the elicitation of defence responses in *Nicotiana attenuata*. *J Exp Bot* 60: 2631–2640.
- von Dahl CC, Hävecker M, Schlögl R, Baldwin IT (2006) Caterpillar-elicited methanol emission: a new signal in plant-herbivore interactions? *Plant J* 46: 948–960.
- Louvet R, Cavel E, Gutierrez L, Guenin S, Roger D, et al. (2006) Comprehensive expression profiling of the pectin methylesterase gene family during silique development in *Arabidopsis thaliana*. *Planta* 224: 782–791.
- Marković O, Cederlund E, Griffiths WJ, Lipka T, Jörnvall H (2002) Characterization of carrot pectin methylesterase. *Cell Mol Life Sci* 59: 513–518.
- Wolf S, Rausch T, Greiner S (2009) The N-terminal pro region mediates retention of unprocessed type-I PME in the Golgi apparatus. *Plant J* 58: 361–375.
- Dorokhov YL, Skurat EV, Frolova OY, Gasanova TV, Ivanov PA, et al. (2006) Role of the leader sequences in tobacco pectin methylesterase secretion. *FEBS Letters* 580: 3329–3334.
- Hasunuma T, Fukusaki E, Kobayashi A (2003) Methanol production is enhanced by expression of an *Aspergillus niger* pectin methylesterase in tobacco cells. *J Biotechnol* 106: 45–52.
- Hasunuma T, Fukusaki E, Kobayashi A (2004) Expression of a fungal pectin methylesterase in transgenic tobacco leads to alteration in cell wall metabolism and a dwarf phenotype. *J Biotechnol* 111: 241–251.
- Pelletier S, Van Orden J, Wolf S, Vissenberg K, Delacourt J, et al. (2010) A role for pectin de-methylesterification in a developmentally regulated growth acceleration in dark-grown Arabidopsis hypocotyls. *New Phytol* 188: 726–739.
- Wen FS, Zhu YM, Haves MC (1999) Effect of pectin methylesterase gene expression on pea root development. *Plant Cell* 11: 1129–1140.
- Fosu-Nyarko J, Jones MG, Wang Z (2009) Functional characterization of transcripts expressed in early-stage *Meloidogyne javanica*-induced giant cells isolated by laser microdissection. *Mol Plant Pathol* 10: 237–248.
- Bosch M, Hepler PK (2005) Pectin methylesterases and pectin dynamics in pollen tube. *Plant Cell* 17: 3219–3226.
- Bosch M, Cheung AY, Hepler PK (2005) Pectin methylesterase, a regulator of pollen tube growth. *Plant Physiol* 138: 1334–1346.
- Francies KE, Lam SY, Copenhaver GP (2007) Separation of Arabidopsis pollen tetrads is regulated by *QUARTETT*, a pectin methylesterase gene. *Plant Physiol* 142: 1004–1013.
- Tian GW, Chen MH, Zaltsman A, Citovsky V (2006) Pollen-specific pectin methylesterase involved in pollen tube growth. *Dev Biol* 294: 83–91.
- Chen MH, Citovsky V (2003) Systemic movement of a tobamovirus requires host cell pectin methylesterase. *Plant J* 35: 386–392.
- Chen MH, Sheng J, Hind G, Handa AK, Citovsky V (2000) Interaction between the tobacco mosaic virus movement protein and host cell pectin methylesterases is required for viral cell-to-cell movement. *EMBO J* 19: 913–920.
- Dorokhov YL, Makinen KM, Frolova OY, Merits A, Kalkkinen N, et al. (1999) A novel function for a ubiquitous plant enzyme pectin methylesterase: the host-cell receptor for the tobacco mosaic virus movement protein. *FEBS Lett* 461: 223–228.
- Dorokhov YL, Frolova OY, Skurat EV, Ivanov PA, Gasanova TV, et al. (2006) A novel function for a ubiquitous plant enzyme pectin methylesterase: the enhancer of RNA silencing. *FEBS Lett* 580: 3872–3878.
- Gasanova TV, Skurat EV, Frolova O, Semashko MA, Dorokhov YL (2008) Pectin methylesterase as a factor of plant transcriptome stability. *Mol Biology (Mosk)* 42: 421–429.
- Lagaert S, Beliën T, Volckaert G (2009) Plant cell walls: Protecting the barrier from degradation by microbial enzymes. *Semin Cell Dev Biol* 20: 1064–1073.
- Jenkins J, Mayans O, Smith D, Worboys K, Pickersgill RW (2001) Three-dimensional structure of *Erwinia chrysanthemi* pectin methylesterase reveals a novel esterase active site. *J. Mol. Biol.* 305: 951–960.
- Fall R, Benson AA (1996) Leaf methanol – the simplest natural product from plants. *Trends in Plant Science* 1: 296–301.
- Guenther A, Hewitt C, Erickson D, Fall R, Geron C, et al. (1995) A global model of natural volatile organic compound emissions. *J Geophys Res* 100: 8873–8892.
- Nemeček-Marshall M, MacDonald RC, Franzen JJ, Wojciechowski CL, Fall R (1995) Methanol emission from leaves. *Plant Physiol* 108: 1359–1368.
- Hüve K, Christ MM, Kleist E, Uerlings R, Niinemets U, et al. (2007) Simultaneous growth and emission measurements demonstrate an interactive control of methanol release by leaf expansion and stomata. *J Exp Bot* 58: 1783–1793.
- de Gouw JA, Howard CJ, Custer TG, Baker BM, Fall R (2000) Proton-transfer chemical-ionization mass spectrometry allows real-time analysis of volatile organic compounds released from cutting and drying of crops. *Environ. Sci Technol* 34: 2640–2648.

48. Körner E, von Dahl CC, Bonaventure G, Baldwin IT (2009) Pectin methyltransferase NaPME1 contributes to the emission of methanol during insect herbivory and to the elicitation of defence responses in *Nicotiana attenuata*. *J Exp Bot* 60: 2631–2640.
49. Penuelas J, Filella I, Stefanescu C, Llusia J (2005) Caterpillars of *Euphydryas aurinia* (Lepidoptera: Nymphalidae) feeding on *Succisa pratensis* leaves induce large foliar emissions of methanol. *New Phytologist* 167: 851–857.
50. Dorokhov YL, Komarova TV, Petrunia IV, Frolova OY, Pozdyshev DV, et al. (2012) Airborne signals from a wounded leaf facilitate viral spreading and induce antibacterial resistance in neighboring plants. *PLoS Pathogens*, DOI: 10.1371/journal.ppat.1002640, in press.
51. Smith R (1981) Aspartame approved despite risks. *Science* 213: 986–987.
52. Dickson D (1981) Aspartame sugar substitute. New court overruled. *Nature* 292: 283.
53. Monte WC (1984) Aspartame, methanol and the public health. *J Appl Nutr* 36: 42–58.
54. Monte WC (2010) Methanol: a chemical Trojan horse as the root of the inscrutable U. *Med Hypotheses*. 74: 493–496.
55. Magnuson BA, Burdock GA, Doull J, Kroes RM, Marsh GM, et al. (2007) Aspartame: a safety evaluation based on current use levels, regulations, and toxicological and epidemiological studies. *Crit Rev Toxicol* 37: 629–727.
56. Kostic MA, Dart RC (2003) Rethinking the toxic methanol level. *J Toxicol Clin Toxicol* 41: 793–800.
57. Oyama Y, Sakai H, Arata T, Okano Y, Akaike N, et al. (2002) Cytotoxic effects of methanol, formaldehyde, and formate on dissociated rat thymocytes: a possibility of aspartame toxicity. *Cell Biol Toxicol* 18: 43–50.
58. Datta NJ, Namasivayam A (2003) In vitro effect of methanol on folate-deficient rat hepatocytes. *Drug Alcohol Depend* 71: 87–91.
59. Hansen JM, Contreras KM, Harris C (2005) Methanol, formaldehyde, and sodium formate exposure in rat and mouse conceptuses: a potential role of the visceral yolk sac in embryotoxicity. *Birth Defects Res A Clin Mol Teratol* 73: 72–82.
60. Nakao H, Umabayashi C, Nakata M, Nishizaki Y, Noda K, et al. (2003) Formaldehyde-induced shrinkage of rat thymocytes. *J Pharmacol Sci* 91: 83–86.
61. Tephly TR (1991) The toxicity of methanol. *Life Sci* 48: 1031–1041.
62. Jones A (1987) Elimination half-life of methanol during hangover. *Pharmacol Toxicol* 60: 217–220.
63. Kraut JA, Kurtz I (2008) Toxic alcohol ingestions: clinical features, diagnosis, and management. *Clin J Am Soc Nephrol* 3: 208–225.
64. Haffner H T, Besserer K, Graw M, Voges S (1997) Methanol elimination in non-alcoholics: inter and intra-individual variation *Forensic Sci Int* 86: 69–76.
65. Brent J (2009) Fomepizole for ethylene glycol and methanol poisoning. *N Engl J Med* 360: 2216–2223.
66. Brent J (2010) Fomepizole for the treatment of pediatric ethylene and diethylene glycol, butoxyethanol, and methanol poisonings. *Clinical Toxicology* 48: 401–406.
67. Hovda KE, Jacobsen D (2008) Expert opinion: fomepizole may ameliorate the need for hemodialysis in methanol poisoning. *Hum Exp Toxicol* 27: 539–546.
68. Jacobsen D, McMartin KE (1986) Methanol and ethylene glycol poisonings. Mechanism of toxicity, clinical course, diagnosis and treatment. *Med Toxicol* 1: 309–334.
69. Jacobsen D, McMartin KE (1997) Antidotes for methanol and ethylene glycol poisoning. *J Toxicol Clin Toxicol* 35: 127–143.
70. Eriksen SP, Kulkarni AB (1963) Methanol in Normal Human Breath. *Science*. 141: 639–640.
71. Taucher J, Lagg A, Hansel A, Vogel W, Lindinger W (1995) Methanol in human breath. *Alcohol Clin. Exp Res* 19: 1147–1150.
72. Western OC, Ozburn EE (1949) Methanol and formaldehyde in normal body tissues and fluids. *U S Nav Med Bull* 49: 574.
73. Enderby B, Lenney W, Brady M, Emmett C, Spanel P, et al. (2009) Concentrations of some metabolites in the breath of healthy children aged 7–18 years measured using selected ion flow tube mass spectrometry (SIFT-MS). *J Breath Res* 3: 036001.
74. Fisher JW, Dorman DC, Medinsky MA, Welsch F, Conolly RB (2000) Analysis of respiratory exchange of methanol in the lung of the monkey using a physiological model *Toxicol Sci* 52: 185–193.
75. Turner C, Spanel P, Smith D (2006) A longitudinal study of methanol in the exhaled breath of 30 healthy volunteers using selected ion flow tube mass spectrometry, SIFT-MS. *Physiol Meas* 27: 637–648.
76. Turner C, Parekh B, Walton C, Spanel P, Smith D, et al. (2008) An exploratory comparative study of volatile compounds in exhaled breath and emitted by skin using selected ion flow tube mass spectrometry. *Rapid Commun Mass Spectrom* 22: 526–532.
77. Mégarbane B, Borron SW, Baud FJ (2005) Current recommendations for treatment of severe toxic alcohol poisonings. *Intensive Care Med* 31: 189–195.
78. Lindinger W, Taucher J, Jordan A, Hansel A, Vogel W (1997) Endogenous production of methanol after the consumption of fruit. *Alcohol Clin Exp Res* 21: 939–943.
79. Ewen R, De Lacy Costello B, Garner C, Ratcliffe N M, et al. (2005) Rapid diagnosis of gastro-intestinal infection using faecal odour Breath Analysis for Clinical Diagnosis and Therapeutic Monitoring ed A Amann and D Smith (Singapore: World Scientific).
80. Axelrod J, Daly J (1965) Pituitary Gland: Enzymic Formation of Methanol from S-Adenosylmethionine. *Science* 150: 892–893.
81. Snyder SH, Axelrod J, Smith OD, Pucci GL (1967) Formation of methanol by an enzyme in an ectopic pinealoma. *Nature* 215: 773–774.
82. Fedorova E, Zink D (2009) Nuclear genome organization: common themes and individual patterns. *Curr Opin Genet Dev* 19: 166–171.
83. Klöse RJ, Bird AP (2006) Genomic DNA methylation: the mark and its mediators. *Trends Biochem Sci* 31: 89–97.
84. Martin-Subero JI, Esteller M (2011) Profiling epigenetic alterations in disease. *Adv Exp Med Biol* 711: 162–177.
85. Diliberto EJ Jr., Axelrod J (1974) Characterization and substrate specificity of a protein carboxymethylase in the pituitary gland. *Proc Natl Acad Sci U S A* 71: 1701–1704.
86. Diliberto EJ Jr., Axelrod J (1976) Regional and subcellular distribution of protein carboxymethylase in brain and other tissues. *J Neurochem* 26: 1159–1165.
87. Diliberto DJ Jr., Veiveros OH, Axelrod J (1976) Subcellular distribution of protein carboxymethylase and its endogenous substrates in the adrenal medulla: possible role in excitation-secretion coupling. *Proc Natl Acad Sci U S A* 73: 4050–4054.
88. Schapira M (2011) Structural Chemistry of Human SET Domain Protein Methyltransferases. *Curr Chem Genomics* 5 (Suppl 1): 85–94.
89. Gagnon C, Axelrod J, Brownstein MJ (1978) Protein carboxymethylation: effects of 2% sodium chloride administration on protein carboxymethylase and its endogenous substrates in rat posterior pituitary. *Life Sciences* 22: 2155–2164.
90. Wolf ME, Roth RH (1985) Dopamine autoreceptor stimulation increases protein carboxyl methylation in striatal slices. *J Neurochemistry* 44: 291–298.
91. Galli A, Price D, Crabb D (1999) High-level expression of rat class I alcohol dehydrogenase is sufficient for ethanol-induced fat accumulation in transduced HeLa cells. *Hepatology* 29: 1164–1170.
92. Matsumoto M, Cyganek I, Sanghani PC, Cho WK, Liangpunsakul S, et al. (2011) Ethanol metabolism by HeLa cells transduced with human alcohol dehydrogenase isoenzymes: control of the pathway by acetaldehyde concentration. *Alcohol Clin Exp Res* 35: 28–38.
93. Xiao Q, Weiner H, Johnston T, Crabb DW (1995) The aldehyde dehydrogenase ALDH2*2 allele exhibits dominance over ALDH2*1 in transduced HeLa cells. *J Clin Invest* 96: 2180–2186.
94. Tristan C, Shahani N, Sedlak TW, Sawa A (2010) The diverse functions of GADPH: Views from different subcellular compartments. *Cell Signal* 23(2): 317–323.
95. Boxus M, Twizere JC, Legros S, Dewulf JF, Kettmann R, et al. (2008) The HTLV-1 Tax interactome. *Retrovirology* 5: 76.
96. Nassirpour R, Slesinger PA (2007) Subunit-specific regulation of Kir3 channels by sorting nexin 27. *Channels (Austin)* 1: 331–333.
97. Wolgemuth DJ (2008) Function of cyclins in regulating the mitotic and meiotic cell cycles in male germ cells. *Cell Cycle* 7: 3509–3513.
98. Downie B, Dirk LM, Hadfield KA, Wilkins TA, Bennett AB, et al. (1998) A gel diffusion assay for quantification of pectin methyltransferase activity. *Anal Biochem* 264: 149–157.
99. De Moraes CM, Mescher MC, Tumlinson JH (2001) Caterpillar-induced nocturnal plant volatiles repel conspecific females. *Nature* 410: 577–580.
100. Wu J, Baldwin IT (2009) Herbivory-induced signalling in plants: perception and action. *Plant Cell Environ* 32: 1161–1174.
101. Heil M, Karban R (2010) Explaining evolution of plant communication by airborne signals. *Trends in Ecology and Evolution* 25: 137–144.
102. Boyle R The sceptical chymist: or Chymico-physical doubts & paradoxes, touching the spagyrist's principles commonly call'd hypostatical, as they are wont to be propos'd and defended by the generality of alchemists. Whereunto is praemis'd part of another discourse. London: Printed by J. Cadwell for J. Crooke.
103. Williams LB, Canfield B, Voglesonger KM, Holloway JR (2005) Organic molecules formed in a primordial womb. *Geology* 33: 913–916.
104. Voglesonger KM, Holloway JR, Dunn EE, Dalla-Betta PJ, O'Day PA (2001) Experimental abiotic synthesis of methanol in seafloor hydrothermal systems during diking events. *Chemical Geology* 180: 129–139.
105. Williams LB, Holloway JR, Canfield B, Glein CR, Dick JM, et al. (2011) Birth of Biomolecules from the Warm Wet Sheets of Clays Near Spreading Centers. In: *Earliest life on earth: habitats, environments and methods of detection Part 1: 79–112*. DOI: 10.1007/978-90-481-8794-2_4.
106. Sirover MA (2005) New nuclear functions of the glycolytic protein, glyceraldehyde-3-phosphate dehydrogenase, in mammalian cells. *J Cell Biochem* 95: 45–52.
107. Attar N, Cullen PJ (2010) The retromer complex. *Adv Enzyme Regul* 50: 216–236.
108. van Weering JR, Verkade P, Cullen PJ (2010) SNX-BAR proteins in phosphoinositide-mediated, tubular-based endosomal sorting. *Semin Cell Dev Biol* 21: 371–380.
109. Wolgemuth DJ (2008) Function of cyclins in regulating the mitotic and meiotic cell cycles in male germ cells. *Cell Cycle* 7: 3509–3513.
110. Frenkel C, Peters JS, Tieman DM, Tiznado ME, Handa AK (1998) Pectin methyltransferase regulates methanol and ethanol accumulation in ripening tomato (*Lycopersicon esculentum*) fruit. *J Biol Chem* 273: 4293–4295.

111. Byers JA (1992) Attraction of bark beetles, *Tomicus piniperda*, *Hylurgops palliatus*, and *Trypodendron domesticum* and other insects to short-chain alcohols and monoterpenes. *J Chem Ecology* 18: 2385–2402.
112. Gören JL, Stoll AL, Damico KE, Sarmiento IA, Cohen BM (2004) Bioavailability and lack of toxicity of S-adenosyl-L-methionine (SAME) in humans. *Pharmacotherapy* 24: 1501–1507.
113. Dwyer JT (1988) Health aspects of vegetarian diets. *Am J Clin Nutr* 48: 712–738.
114. Key TJ, Fraser GE, Thorogood M, Appleby PN, Beral V, et al. (1999) Mortality in vegetarians and nonvegetarians: detailed findings from a collaborative analysis of 5 prospective studies. *Am J Clin Nutr* 70: 516S–524S.
115. Neuhauser ML (2006) The long and winding road of diet and breast cancer prevention. *Cancer Epidemiol Biomarkers Prev* 15: 1755–1756.
116. Steffen LM, Kroenke CH, Yu X, Pereira MA, Slattery ML, et al. (2005) Associations of plant food, dairy product, and meat intakes with 15-y incidence of elevated blood pressure in young black and white adults: the Coronary Artery Risk Development in Young Adults (CARDIA) Study. *Am J Clin Nutr* 82: 1169–1177.
117. Altorf-van der Kuil W, Engberink MF, Brink EJ, van Baak MA, Bakker SJ, et al. (2010) Dietary protein and blood pressure: a systematic review. *PLoS One* 5(8): e12102.
118. Miura K, Greenland P, Stamler J, Liu K, Daviglus ML, et al. (2004) Relation of vegetable, fruit, and meat intake to 7-year blood pressure change in middle-aged men: the Chicago Western Electric Study. *Am J Epidemiol* 159: 572–580.
119. Craig WJ (1997) Phytochemicals: guardians of our health. *J Am Diet Assoc* 97 (Suppl 2): S199–204.
120. Potter JD, Steinmetz K (1996) Vegetables, fruit and phytoestrogens as preventive agents. *IARC Sci Publ* 139: 61–90.
121. Stasse-Wolthuis M, Albers HF, van Jeveren JG, Wil de Jong J, Hautvast JG, et al. (1980) Influence of dietary fiber from vegetables and fruits, bran or citrus pectin on serum lipids, fecal lipids, and colonic function. *Am J Clin Nutr* 33: 1745–1756.
122. Brown L, Rosner B, Willett WW, Sacks FM (1999) Cholesterol-lowering effects of dietary fiber: a meta-analysis. *Am J Clin Nutr* 69: 30–42.
123. Gallaher CM, Gallaher DD (2009) Dried plums (prunes) reduce atherosclerosis lesion area in apolipoprotein E-deficient mice. *Br J Nutr* 101(2): 233–239.
124. Bergman M, Djaldetti M, Salman H, Bessler H (2010) Effect of citrus pectin on malignant cell proliferation. *Biomed Pharmacother* 64(1): 44–47.
125. Glinsky VV, Raz A (2009) Modified citrus pectin anti-metastatic properties: one bullet, multiple targets. *Carbohydr Res* 344(14): 1788–1791.
126. Liu HY, Huang ZL, Yang GH, Lu WQ, Yu NR (2008) Inhibitory effect of modified citrus pectin on liver metastases in a mouse colon cancer model. *World J Gastroenterol* 14(48): 7386–7391.
127. Liu J R, Dong HW, Chen BQ, Zhao P, Liu RH (2009) Fresh apples suppress mammary carcinogenesis and proliferation and proliferative activity and induce apoptosis in mammary tumors of the Sarague- Daweley rat. *J Agric Food Chem* 57: 297–304.
128. Liu L, Li Y, Niu Y, Sun Y, Guo Z, et al. (2010) An Apple Oligogalactan Prevents against Inflammation and Carcinogenesis by Targeting LPS/TLR4/NF- κ B Pathway in A Mouse Model of Colitis-Associated Colon Cancer. *Carcinogenesis* 10: 1822–1832.
129. Nangia-Makker P, Hogan V, Honjo Y, Baccarini S, Tait L, et al. (2002) Inhibition of human cancer cell growth and metastasis in nude mice by oral intake of modified citrus pectin. *J Natl Cancer Inst* 94: 1854–1862.
130. Panza F, Frisardi V, Capurso C, D'Introno A, Colacicco AM, et al. (2009) Polyunsaturated fatty acid and S-adenosylmethionine supplementation in predementia syndromes and Alzheimer's disease: a review. *ScientificWorld Journal* 9: 373–389.
131. Trocho C, Pardo R, Fafecas I, Virgili J, Remesar X, et al. (1988) Formaldehyde derived from dietary aspartame binds to tissue components in vivo. *Life Sci* 63: 337–349.
132. Kimura M, Higuchi S (2011) Genetics of alcohol dependence. *Psychiatry Clin Neurosci* 65: 213–225.
133. Höög JO, Ostberg LJ (2011) Mammalian alcohol dehydrogenases—a comparative investigation at gene and protein levels. *Chem Biol Interact* 191: 2–7.
134. Zatman L (1946) The effect of ethanol on the metabolism of methanol in man. *Biochem J* 40: 67.
135. Jones A (1987) Elimination half-life of methanol during hangover. *Pharmacol Toxicol* 60: 217–220.
136. Lester D (1962) The concentration of apparent endogenous ethanol. *Q J Stud Alcohol* 23: 17.
137. Ledochowski M, Amman A, Fuchs D (2005) Breath gas analysis in patients with carbohydrate malabsorption syndrome In: *Breath Analysis for Clinical Diagnosis and Therapeutic Monitoring*, eds A Amann and D Smith (Singapore: World Scientific), pp 375–392.
138. Marmot M, Brunner E (1991) Alcohol and cardiovascular disease: the status of the U shaped curve. *BMJ* 303: 565–568.
139. San José B, van de Mheen H, van Oers JA, Mackenbach JP, Garretsen HF (1999) The U-shaped curve: various health measures and alcohol drinking patterns. *J Stud Alcohol* 60: 725–731.
140. Lee E-S, Chen H, Hardman C, Simm A, Charlton C (2008) Excessive S-adenosyl-L-methionine-dependent methylation increases levels of methanol, formaldehyde and formic acid in rat brain striatal homogenates: Possible role in S-adenosyl-L-methionine-induced Parkinson's disease-like disorders. *Life Sciences* 83: 821–827.
141. Coppède F (2010) One-Carbon Metabolism and Alzheimer's Disease: Focus on Epigenetics *Current Genomics* 11: 246–260.
142. Fuso A, Nicolia V, Ricceri L, Cavallaro RA, Isopi E, et al. (2012) S-adenosylmethionine reduces the progress of the Alzheimer-like features induced by B-vitamin deficiency in mice. *Neurobiol Aging*. DOI: 10.1016/j.jbbr.2011.03.031, in press.
143. Linnebank M, Popp J, Smulders Y, Smith D, Semmler A, et al. (2010) S - Adenosylmethionine Is Decreased in the Cerebrospinal Fluid of Patients with Alzheimer's Disease. *Neurodegenerative Dis* 7: 373–378.
144. Panza A, Frisardi V, Capurso C, D'Introno A, Colacicco A, et al. (2009) Polyunsaturated Fatty Acid and S-Adenosylmethionine Supplementation in Predementia Syndromes and Alzheimer's Disease: A Review. *TheScientificWorldJOURNAL* 9: 373–389.
145. Ausubel FM, Brent R, Kingston RE, Moore DD, Smith JA, et al. (1987) *Current Protocols in Molecular Biology*. New York: Greene Publishing–Wiley Interscience.
146. Yamaguchi M, Yamazaki K, Beauchamp GK, Bard J, Thomas L, et al. (1981) Distinctive urinary odors governed by the major histocompatibility locus of the mouse. *Proc Natl Acad Sci U S A* 78: 5817–5820.
147. Lukyanov SA, Gurskaya NG, Lukyanov KA, Tarabykin VS, Sverdlov ED (1994) Highly efficient subtractive hybridisation of cDNA. *Russian J Bioorganic Chemistry* 20: 701–704.
148. Diachenko L, Lau YF, Campbell AP, Chenchik A, Mogadam F, et al. (1996) Suppression Subtractive Hybridization: A method for generating differentially regulated or tissue-specific cDNA probes and libraries. *Proc Natl Acad Sci USA* 93: 6025–6030.
149. Rebrikov DV, Britanova OV, Gurskaya NG, Lukyanov KA, Tarabykin VS, et al. (2000) Mirror orientation selection (MOS) – a method for eliminating false positive clones from libraries generated by suppression subtractive hybridization. *Nucleic Acid Research* 28(20): e90.
150. Pfaffl MW (2001) A new mathematical model for relative quantification in real-time RT-PCR. *Nucleic Acids Res* 29: e45.