



RESEARCH ARTICLE

REVISED Insulin resistance indices and coronary risk in adults from Maracaibo city, Venezuela: A cross sectional study [version 2; referees: 2 approved]

Juan Salazar ¹, Valmore Bermúdez ^{1,2}, Luis Carlos Olivar¹, Wheeler Torres¹, Jim Palmar¹, Roberto Añez ¹, Maria Grazia Ordoñez³, José Ramón Rivas¹, María Sofía Martínez¹, Juan Diego Hernández², Modesto Graterol², Joselyn Rojas⁴

¹Endocrine and Metabolic Research Center, University of Zulia, Maracaibo, Venezuela

²Grupo de Investigación Altos Estudios de Frontera (ALEF), Universidad Simón Bolívar, Cucuta, Colombia

³Centro de Salud San Marcos, Ministerio de Salud Pública, Provincia de Santa Elena, Ecuador

⁴Pulmonary and Critical Care Medicine Department, Brigham and Women's Hospital, Harvard Medical School, Boston, MA, USA

v2 First published: 11 Jan 2018, 7:44 (doi: [10.12688/f1000research.13610.1](https://doi.org/10.12688/f1000research.13610.1))
 Latest published: 09 Mar 2018, 7:44 (doi: [10.12688/f1000research.13610.2](https://doi.org/10.12688/f1000research.13610.2))

Abstract

Background: Insulin resistance (IR) is a metabolic disorder related to atherosclerosis. Its measurement is of great importance not only as a marker of diabetes but also for cardiovascular disease. The aim of this research study was to evaluate the relationship between various IR indices and coronary risk in an adult population from Maracaibo city, Venezuela.

Methods: The Maracaibo City Metabolic Syndrome Prevalence Study is a descriptive, cross-sectional study with random and multi-stage sampling. In this sub study, 1272 individuals of both genders were selected with the measurement of basal insulin and coronary risk according to the Framingham-Wilson formula calibrated for our population. The insulin resistance indices evaluated were HOMA2-IR, triglycerides and glucose index (TyG) and triglycerides/HDL ratio (TG/HDL). The predictive capacity and association between each index and the coronary risk event in 10 years were determined.

Results: Of the evaluated population, 55.2% were female, 34.8% had a coronary risk $\geq 5\%$ in 10 years, with the TG/HDL and TyG indices showing the highest AUC 0.712 (0.681-0.743) and 0.707 (0.675-0.739), respectively; compared to HOMA2-IR. Both were also the indices most associated with increased coronary risk, especially TG/HDL ≥ 3 with a higher association [OR = 2.83 (1.74-4.61); $p < 0.01$] after multivariable adjustment.

Conclusions: TyG (≥ 4.5) and TG/HDL (≥ 3) indices showed a great predictive capacity of higher coronary risk, with being TG/HDL more associated even after adjusting for abdominal obesity and hs-CRP. Therefore, these represent useful tools for determining IR.

Keywords

insulin resistance, coronary risk, triglycerides, HOMA2-IR, HDL-C

Open Peer Review

Referee Status:

	Invited Referees	
	1	2
REVISED		
version 2	report	report
published		
09 Mar 2018		
version 1		
published	report	
11 Jan 2018		

- Miguel Murguía-Romero** , National Autonomous University of Mexico (UNAM), Mexico
- Anirban Sinha** , Medical College and Hospital, India

Discuss this article

Comments (0)

Corresponding authors: Juan Salazar (juanjsv18@hotmail.com), Valmore Bermúdez (valmore@gmail.com)

Author roles: **Salazar J:** Formal Analysis, Writing – Original Draft Preparation; **Bermúdez V:** Conceptualization, Writing – Review & Editing; **Olivar LC:** Data Curation, Writing – Original Draft Preparation; **Torres W:** Data Curation, Investigation; **Palmar J:** Data Curation, Investigation; **Añez R:** Data Curation, Investigation; **Ordoñez MG:** Data Curation, Investigation; **Rivas JR:** Investigation, Writing – Original Draft Preparation; **Martínez MS:** Data Curation, Formal Analysis; **Hernández JD:** Formal Analysis, Resources; **Graterol M:** Formal Analysis, Funding Acquisition; **Rojas J:** Conceptualization, Writing – Review & Editing

Competing interests: No competing interests were disclosed.

Grant information: This work was supported by research grant N° CC-0437-10-21-09-10 from the Technological, Humanistic, and Scientific Development Council (Consejo de Desarrollo Científico, Humanístico y Tecnológico; CONDES), University of Zulia.

The funders had no role in study design, data collection and analysis, decision to publish, or preparation of the manuscript.

Copyright: © 2018 Salazar J *et al.* This is an open access article distributed under the terms of the [Creative Commons Attribution Licence](#), which permits unrestricted use, distribution, and reproduction in any medium, provided the original work is properly cited. Data associated with the article are available under the terms of the [Creative Commons Zero "No rights reserved" data waiver](#) (CC0 1.0 Public domain dedication).

How to cite this article: Salazar J, Bermúdez V, Olivar LC *et al.* **Insulin resistance indices and coronary risk in adults from Maracaibo city, Venezuela: A cross sectional study [version 2; referees: 2 approved]** *F1000Research* 2018, 7:44 (doi: [10.12688/f1000research.13610.2](https://doi.org/10.12688/f1000research.13610.2))

First published: 11 Jan 2018, 7:44 (doi: [10.12688/f1000research.13610.1](https://doi.org/10.12688/f1000research.13610.1))

REVISED Amendments from Version 1

We want to thank the detailed suggestions of the reviewer during manuscript analysis.

Regarding the corrections:

1. The formula has a typing error; it has been edited in accordance with Simental *et al.*, 2008. Indeed, the differences in reported cut points may be due to discrepancies in the calculation of the formula.
2. The missing "a" is added in [Table 1](#).
3. The correct number of participants with coronary risk $\geq 5\%$ is 443. It was verified in text and [Table 1](#).
4. In the range of cell 1 in [Table 2](#), the correct number is 0.735 (0.707-0.763). It was verified in text and [Table 2](#).
5. The homogeneity of the abbreviation "TG / HDL" (tryglicerides / HDL ratio) was adjusted.

See referee reports

Introduction

Insulin resistance (IR) is defined as a metabolic disorder in which the insulin effects in the target tissue are diminished, leading to derangements in carbohydrate, lipid and protein metabolism¹. IR has been related to the development of several pathologies such as type 2 Diabetes Mellitus (DM2)², Metabolic Syndrome (MS)³ and neurodegenerative diseases⁴. Therefore, the diagnosis and treatment of IR before the expression of the clinical disease are highly important for clinicians⁵. However, most methods to evaluate IR are costly and difficult to operate, such as the euglycemic-hyperinsulinemic clamp, which is considered the gold standard method for its detection⁶.

There is a need to implement new markers that are easier to interpret and more affordable, one being the Homeostasis Model Assessment (HOMA-IR), one of the most widely used, which is calculated from the measurement of fasting glucose and insulin concentration in the plasma⁷. However, the need to determine plasma insulin is a characteristic that limits its use in low-income populations. This limitation has been curbed by the use of the Triglycerides-Glucose (TyG) index, which is obtained from the fasting product of plasma glucose and triglycerides (TG) levels, and has shown an excellent predictive capacity to determine IR even in 2004 subjects of both genders ≥ 18 years from Maracaibo city in a previous report of our research team⁸.

The potential role of IR in the development of cardiovascular diseases (CVD) as a consequence of metabolic derangements, such as hyperglycemia, dyslipidemia, and inflammation together with hypertension, are involved in the progression of atherosclerosis⁹. The aim of this study was to evaluate the relationship between IR indices and coronary risk in an adult population from Maracaibo city, Venezuela.

Methods

Ethical considerations

The study was approved by the Bioethics Committee of the Endocrine and Metabolic Research Center – University of Zulia

(approval number: BEC-006-0305). This ethical approval included all future studies that used the data from the Maracaibo City Metabolic Syndrome Prevalence Study (MMSPS). All participants signed written consent for participation in the study before being questioned and physically examined by a trained team.

Study design and population selection

The MMSPS is a descriptive, cross-sectional study performed in Maracaibo city, Venezuela, during the period May 2007 - December 2009, with the aim to determine the prevalence of MS and cardiovascular risk factors in the adult population of this county. The study include a total of 2230 individuals of both gender, older than 18 years old, and the study protocol was previously reported¹⁰. The most important aspects of the protocol are presented here. Maracaibo city was divided into parishes, which were sampled proportionally through a multistage random sampling, defining conglomerates in two phases: In the first phase, the conglomerates represented the sectors of the 18 parishes, selecting 4 areas per parish by means of simple random sampling; in the second phase, the conglomerates were represented by the neighborhood of each chosen area, to which a random number was assigned.

For this present sub-analysis, individuals between 30–74 years of age were included, excluding those with a past medical history of ischemic heart disease (requirements necessary for the calculation and calibration of the Framingham-Wilson equation), as well as those individuals without available basal insulin determination necessary for HOMA2-IR calculation, thus the final total sample was 1272 individuals.

Evaluation of individuals

All individuals were evaluated, with a complete clinical history performed by trained assistants. Personal past medical and family history were gathered, with an emphasis on metabolic, endocrine and cardiovascular diseases history, as well as sociodemographic characteristics, such as age, gender and race.

Laboratory analysis

After 8 hours of fasting, determination of glucose, total cholesterol, TG, and HDL-C was done with an automated analyzer (Human Gesellschaft für Biochemica und Diagnostica mbH, Germany). The intra-assay coefficient of variation for total cholesterol, TG, glucose and insulin was 3%, 5%, 3%, and $<10\%$, respectively. Insulin was determined using an ultrasensitive ELISA double-sandwich method (DRG Instruments GmbH, Germany), with a detection limit <1 mU/L. Likewise, serum hs-CRP levels were quantified employing immunoturbidimetric assays (Human Gesellschaft für Biochemica and Diagnostica, mH).

IR indices

The calculation of the Triglycerides and Glucose index (TyG) was performed according to Simental-Mendía *et al.*¹¹, using the equation = \ln [fasting triglycerides (mg / dl) \times basal glucose (mg / dl)/2]; thus expressing itself on a logarithmic scale. Previously, we proposed for a 4.5 cut-off point for this index to define IR for this population⁸. The Triglycerides/HDL ratio

(TG/HDL) was calculated from the division of TG between HDL-C; 3 was used as a cut-off point¹². The HOMA2-IR was calculated using the [HOMA-Calculator v2.2.2](#) software provided by the Oxford Center for Diabetes Endocrinology and Metabolism. The proposed cut-off point for our population was 2.00 to define IR¹³.

Definitions

For the evaluation of coronary risk, the Framingham-Wilson formula calibrated for the population of Maracaibo was used¹⁴. The coronary risk was classified into two categories: 1) <5% in 10 years; 2) ≥5% in 10 years. Type 2 diabetic patients were defined with one of the following criteria: a) previous diagnosis of DM2; b) no previous personal history of DM2, but with fasting glucose greater than or equal to 126 mg/dl in two different measurements¹⁵. Abdominal obesity was defined according to the cut-off points for abdominal circumference previously obtained in our population (Women: 91cm; Men: 98cm)¹⁶, as well as the levels of high Sensitivity C-Reactive Protein (hs-CRP), which were measured randomly in 842 subjects, elevated hs-CRP defined as ≥0.765 mg/L¹⁷.

Statistical analysis

Qualitative variables were expressed in absolute and relative frequencies, evaluating the association between them using the χ^2 test (Chi square). Quantitative variables were expressed as arithmetic means±SD, after analysis of normality by Geary test.

The variables with non-normal distribution were subjected to logarithmic transformation.

ROC curves were constructed to analyze the predictive capacity of coronary risk of IR index. ROC curves were constructed for the total and specific sample by gender using R software version 3.4.1. The Area Under the Curve (AUC) was used to establish the predictive ability of the IR indices, where an AUC of 1.00 is considered a perfect diagnostic test¹⁸. The comparisons between AUC were made through the Delong's test¹⁹. Likewise, a logistic regression model was performed for which index was associated with a coronary risk ≥5% (dependent variable), adjusted by age group, sex and IR indices. In successive models, these were adjusted according to abdominal obesity and hs-CRP. All data were analyzed with SPSS v.21 for Windows (IBM Chicago, IL). The results were considered statistically significant when $p < 0.05$.

Results

General characteristics of the sample

A total of 1272 individuals were evaluated, 55.2% (n=702) were female; 65.2% (n=829) had coronary risk <5% in 10 years, while 34.8% (n=443) had coronary risk ≥5% in 10 years. The frequency of DM2 for the two coronary risk groups was 29.6% (n=45) and 70.4% (n=107), respectively. The mean age of the sample population was 47.13±10.92 years. Other general characteristics of the sample population are presented in [Table 1](#).

Table 1. General characteristics of the sample population from Maracaibo city, Venezuela, according to coronary risk.

	<5% Coronary risk (n=829)	≥5% Coronary risk (n=443)
Gender (n; %)		
Female	499; 71.1	203; 28.9
Male	330; 57.9	240; 42.1
Type 2 diabetes mellitus (n; %)		
Absent	784; 70.0	336; 30.0
Present	45; 29.6	107; 70.4
Abdominal obesity (n; %)		
Absent	378; 75.1	125; 24.9
Present	451; 58.6	318; 41.4
hs-C Reactive Protein (mg/L)* (n; %)		
Normal	403; 66.9	199; 33.1
Elevated	135; 56.3	105; 43.7
Age (Mean±SD)	42.29±8.54	56.19±8.94
TyG (Mean±SD)	4.61±0.31	4.89±0.35
HOMA2-IR (Mean±SD)	2.17±1.43	2.54±1.55
TG/HDL (Mean±SD)	3.11±2.54	5.55±5.81

*High sensitive C-reactive protein values were measured in n=842.

TyG: Tryglycerides-glucose index; TG/HDL: Tryglycerides/HDL ratio; SD: Standard deviation.

Insulin resistance index and coronary risk

When evaluating the predictive capacity of the IR indices for coronary risk (Figure 1), it was evidenced that the TyG index had an AUC=0.735 (CI95%: 0.707-0.763), higher than that observed for the HOMA2-IR [(AUC=0.589; CI95%: 0.556-0.622; p=2.2×10⁻²⁶)]. Likewise, the TG/HDL index showed a greater predictive capacity compared to HOMA2IR (AUC=0.772 vs. AUC=0.589; p=1.20×10⁻¹²). There were no significant differences in the predictive capacity between the TyG index and the TG/HDL (p=0.079), (Table 2).

In the evaluation by gender, both women and men had a TyG index with significantly higher AUC than HOMA2-IR (Women: AUC=0.770 vs AUC=0.590; p=1.68×10⁻¹²; Men: AUC=0.682 vs AUC=0.578; p=8.03×10⁻⁵), whereas only in men the TyG index had a statistically greater predictive capacity than the TG/HDL index (AUC=0.682 vs. AUC=0.649; p=0.005). Likewise, in women a greater predictive capacity compared to men was observed for both the TyG index (AUC=0.770 vs AUC=0.682; p=0.002), and TG/HDL (AUC=0.767 vs. 0.649; p=7.86×10⁻⁵) (Table 2).

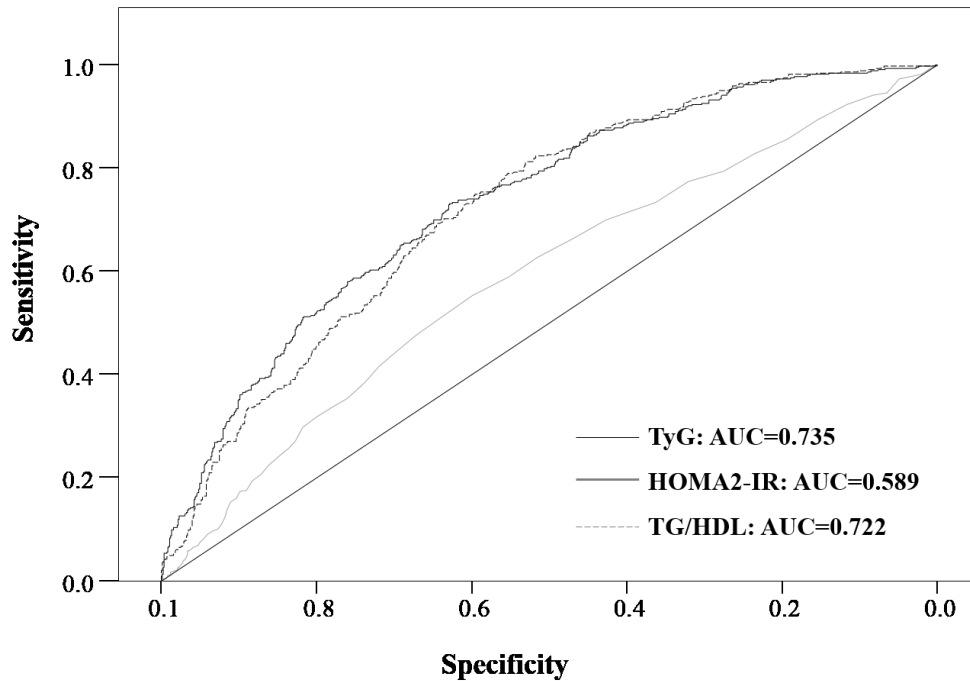


Figure 1. ROC curves for insulin resistant indices in a population from Maracaibo city, Venezuela. AUC, area under the curve; TyG: Tryglycerides-glucose index; TG/HDL: Tryglycerides/HDL ratio.

Table 2. Comparison of AUC obtained from each insulin resistance index for the sample population from Maracaibo city, Venezuela.

	TyG (A)	HOMA2-IR (B)	TG/HDL (C)	DeLong Test		
	AUC (CI95%)	AUC (CI95%)	AUC (CI95%)	A vs B	A vs C	B vs C
All	0.735 (0.707-0.763)	0.589 (0.556-0.622)	0.722 (0.694-0.750)	2.2×10 ⁻¹⁶	0.079	1.20×10 ⁻¹²
Female	0.770 (0.734-0.807)	0.590 (0.543-0.637)	0.767 (0.730-0.803)	1.68×10 ⁻¹²	0.697	9.19×10 ⁻¹¹
Male	0.682 (0.638-0.726)	0.578 (0.531-0.626)	0.649 (0.604-0.694)	8.03×10 ⁻⁵	0.005	0.009
Individuals without Diabetes mellitus						
All	0.707 (0.675-0.739)	0.563 (0.527-0.600)	0.712 (0.681-0.743)	4.12×10 ⁻¹²	0.447	1.24×10 ⁻¹²
Female ^a	0.746 (0.704-0.787)	0.570 (0.518-0.622)	0.759 (0.719-0.798)	5.51×10 ⁻⁹	0.174	5.81×10 ⁻¹⁰
Male ^a	0.648 (0.598-0.698)	0.549 (0.497-0.602)	0.637 (0.587-0.687)	8.76×10 ⁻⁴	0.276	0.003

AUC, area under the curve; TyG: Tryglycerides-glucose index; TG/HDL: Tryglycerides/HDL ratio; CI: Confidence Interval

^aDeLong's test between female and male gender TyG = 0.002; HOMA2-IR = 0.729; TG/HDL = 7.86×10⁻⁵

IR indices and coronary risk in individuals without DM

Similarly, when evaluating the indices in individuals without diagnosis of DM2 (Figure 2), it was demonstrated that TG/HDL and TyG indices were the greatest predictors of individuals

without DM2, with AUC values of 0.712 (CI95%: 0.681-0.743) and 0.707 (CI95%: 0.675-0.739), respectively. These were significantly superior to those exhibited by HOMA2-IR, even in the analysis by gender (Table 2).

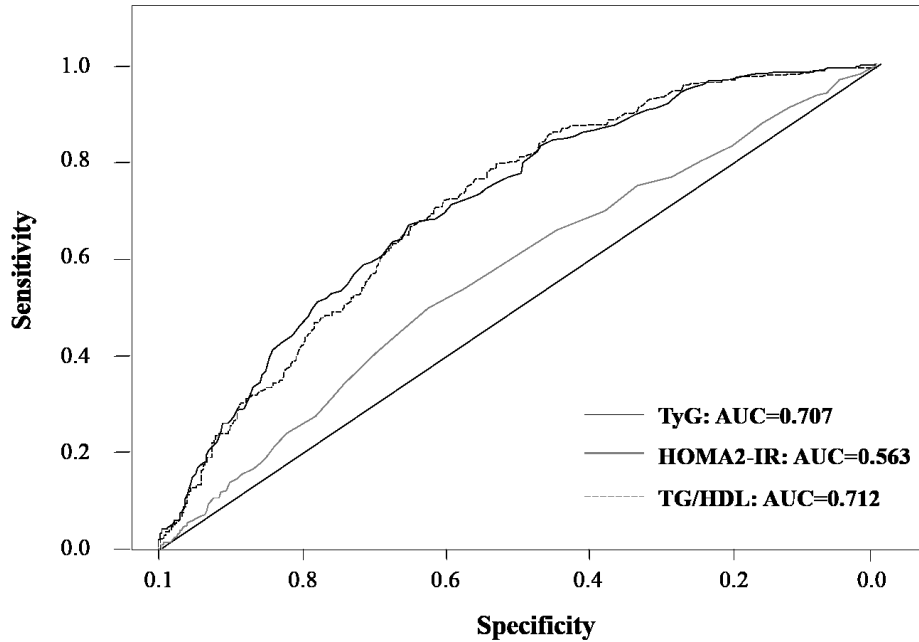


Figure 2. ROC curve for insulin resistant index in individuals without diabetes mellitus in a population from Maracaibo city, Venezuela. AUC, area under the curve; TyG: Tryglycerides-glucose index; TG/HDL: Tryglycerides/HDL ratio.

Table 3. Distribution of individuals according to insulin resistance indices and coronary risk in a sample population from Maracaibo city, Venezuela.

	<5% coronary risk		≥5% coronary risk		$\chi^2 (p)^a$	Model 1 OR (IC95%); p	Model 2 OR (IC95%); p	Model 3 OR (IC95%); p
	n	%	n	%				
TyG					98.55 (<0.001)			
<4.5	302	36.4	46	10.4		1	1	1
≥4.5	527	63.6	397	89.6		1.86 (1.15-3.02); 0.01	1.82 (1.12-2.96); 0.02	1.48 (0.82-2.67); 0.19
HOMA2-IR					23.17 (<0.001)			
<2	458	55.2	182	41.1		1	1	1
≥2	371	44.8	261	58.9		1.21 (0.89-1.65); 0.22	1.09 (0.79-1.51); 0.56	1.17 (0.79-1.73); 0.43
TG/HDL					128.43 (<0.001)			
<3	527	63.6	134	30.2		1	1	1
≥3	302	36.4	309	69.8		3.17 (2.15-4.68); <0.01	3.01 (2.04-4.46); <0.01	2.83 (1.74-4.61); <0.01
Total	829	100.0	443	100.0				

TG: triglycerides; TyG: triglycerides-glucose index.

^aPearson's chi-square test

Model 1: adjusted by indices of insulin resistance, age groups and sex. Excluding diabetic subjects

Model 2: Model 1 + abdominal obesity

Model 3: Model 2 + Elevated hs-CRP

IR indices and coronary risk

During the evaluation of subjects' distribution according to IR indices and coronary risk in 10 years (Table 3), a statistically significant association was found. However, it was observed in the multivariate model that only individuals with a TG/HDL ≥ 3 were more likely to present $\geq 5\%$ coronary risk in 10 years (OR: 3.17 CI95%: 2.15-4.68; $p < 0.01$), even after model adjusting for abdominal obesity and hs-CRP (OR: 2.83 CI95%: 1.74-4.61; $p < 0.01$).

Dataset 1. MMSPS Insulin resistance indices and coronary risk dataset

<http://dx.doi.org/10.5256/f1000research.13610.d189587>

BMI: Body Mass Index, WaistC: Waist Circumference, BP: Blood Pressure; hs-CRP: high Sensitivity C Reactive Protein.

Discussion

IR is currently well-known for its physiopathological role in conditions such as obesity, arterial hypertension, dyslipidemia, DM2 and CVD^{3,9}. The detection of IR in primary care is a potential prevention strategy. For this reason, the use of low cost and easy use indices, such as TyG and TG/HDL, could be valuable tools in daily clinical practice, even over HOMA2-IR.

Different physiopathological mechanisms has been linked to IR, including an increase in cardiovascular risk by promoting endothelial dysfunction, inhibiting the synthesis of nitric oxide, and stimulating the secretion of endothelin-1 and the expression of cell adhesion molecules²⁰. It also affects the smooth muscle cells by promoting proliferation, migration and apoptosis, making the atherosclerotic plaque more unstable, which is associated with secretion of pro-inflammatory mediators by macrophages²¹. These morphological and functional changes in the vascular wall and the heart could explain the increased cardiovascular risk in IR states⁹.

Several studies have evaluated the predictive capacity of TyG index for CVD, but there are few reports for Latin American populations. In this analysis, it was found that TyG is a better predictor of coronary risk compared with HOMA2-IR. Similarly, Martínez-Larrad *et al.*²², in a combined analysis conducted in non-diabetic individuals from the Mexico City Diabetes Study, the San Antonio Heart Study and Spanish Insulin Resistance Study, observed that the TyG index had higher AUC (between 0.673-0.875) to discriminate $\geq 10\%$ risk coronary in 10 years than the HOMA-IR (between 0.579-0.746), as well as other less used IR indices, such as the McAuleys index and the insulin sensitivity index of Avignon.

This behavior has also been determined in two Asian populations, where the TyG index was a better predictor of coronary arterial calcification than the HOMA-IR^{23,24}, although in one of these populations, it was observed that by including another predictive variable, such as the abdominal circumference, the predictive

capacity of this marker increased²⁴. On the other hand, Sánchez-Íñigo *et al.*²⁵ showed that in 5014 patients belonging to The Vascular Metabolic CUN cohort, the association of the TyG index categorized in quintiles and the risk of developing a coronary event was twice the risk in the upper quintile. In addition, Irace *et al.*²⁶ analyzed the relationship between the TyG and HOMA indices with the risk of carotid atherosclerosis, and demonstrated that only the former was significantly associated, even after adjustment with the presence of metabolic syndrome.

Our results coincide with these previously reported findings that reveal a significant superiority of TyG over HOMA2-IR in the prediction of coronary risk, which was also more marked in the female population, probably associated with a greater distribution of intra-abdominal fat and proatherogenic factors. This interaction between the proinflammatory molecule and the TyG was evident in multivariable analysis after the adjustment by hs-CRP.

In regards to the TG/HDL ratio, most studies in Latin America have compared the predictive capacity for cardiovascular risk or association with cardiovascular risk factors in children²⁷. Only those reports of Salazar *et al.*^{28,29} in the Argentinean population have linked the TG/HDL ratio with cardiovascular events in Latin American adults. In this sense, our findings coincide with those shown in the Argentinean population, evidencing not only the high predictive capacity of individuals with coronary risk $\geq 5\%$ in 10 years by the TG/HDL ratio, but the close relationship that exists between the variables even after adjustment for covariates such as abdominal obesity and hs-CRP, higher than the TyG index. These results differ from those exhibited by Du *et al.*³⁰ in more than 7000 Chinese individuals, who showed that TyG index is the best predictor of IR, whereas TG/HDL ratio is body fat distribution dependent.

The TyG and TG/HDL indices superiority over HOMA2-IR in the prediction of coronary risk demonstrates the importance of serum TG in the pathophysiology of IR. Although one of the disadvantages posed for HOMA-IR is that it only reflects IR in the liver, given the ability of basal insulin to suppress gluconeogenesis in this organ during the fasting period²⁶. In this study, the mathematical model HOMA2-IR was used, whose advantage with its predecessor is the estimation of peripheral resistance to insulin³¹. Therefore, the greater prediction of the indices that have serum TG in their calculation does not depend specifically on the ability to measure peripheral IR in skeletal muscle or adipose tissue, but possibly, the greater contribution of TG in the development of IR³².

Additionally, the differences in regards of IR according to gender and its potential influence on cardiovascular risk is a controversial topic in the endocrinology field³³. Our findings reflect that this difference is shown even in the measurement methods, with a greater predictive capacity of coronary risk in women, possibly associated with differences in serum levels of TG and

HDL-C according to gender, an aspect that must be taken into consideration when making determinations.

It should be noted that because of the cross-sectional design of the study, causality cannot be defined, so future prospective design studies should evaluate these IR indices for the prediction of cardiovascular mortality. However, our findings demonstrate the importance of the TyG and TG/HDL indices, especially the latter in the prediction of coronary risk, and these are tools to determine IR of easier application in regions where the economic aspect is a limitation of measurement for serum insulin.

Data availability

Dataset 1: MMSPS Insulin resistance indices and coronary risk dataset. BMI: Body Mass Index, WaistC: Waist Circumference,

BP: Blood Pressure; hs-CRP: high Sensitivity C Reactive Protein. DOI, [10.5256/f1000research.13610.d189587](https://doi.org/10.5256/f1000research.13610.d189587)³⁴

Competing interests

No competing interests were disclosed.

Grant information

This work was supported by research grant N° CC-0437-10-21-09-10 from the Technological, Humanistic, and Scientific Development Council (Consejo de Desarrollo Científico, Humanístico y Tecnológico; CONDES), University of Zulia.

The funders had no role in study design, data collection and analysis, decision to publish, or preparation of the manuscript.

References

- Rojas J, Bermúdez V, Leal E, *et al.*: **Insulinorresistencia e hiperinsulinemia como factores de riesgo para enfermedad cardiovascular.** *Archivos Venezolanos de Farmacología y Terapéutica.* 2008; **27**(1 Suppl): 29–39.
[Reference Source](#)
- Gastaldelli A: **Role of beta-cell dysfunction, ectopic fat accumulation and insulin resistance in the pathogenesis of type 2 diabetes mellitus.** *Diabetes Res Clin Pract.* 2011; **93**(Suppl 1): S60–S65.
[PubMed Abstract](#) | [Publisher Full Text](#)
- Aminot-Gilchrist DV, Anderson HD: **Insulin resistance-associated cardiovascular disease: potential benefits of conjugated linoleic acid.** *Am J Clin Nutr.* 2004; **79**(6 Suppl): 1159S–1163S.
[PubMed Abstract](#) | [Publisher Full Text](#)
- De Felice FG, Lourenco MV, Ferreira ST: **How does brain insulin resistance develop in Alzheimer's disease?** *Alzheimers Dement.* 2014; **10**(1 Suppl): S26–32.
[PubMed Abstract](#) | [Publisher Full Text](#)
- Fonseca VA: **Early identification and treatment of insulin resistance: impact on subsequent prediabetes and type 2 diabetes.** *Clin Cornerstone.* 2007; **8** Suppl 7: S7–18.
[PubMed Abstract](#) | [Publisher Full Text](#)
- DeFronzo RA, Tobin JD, Andres R: **Glucose clamp technique: a method for quantifying insulin secretion and resistance.** *Am J Physiol.* 1979; **237**(3): E214–223.
[PubMed Abstract](#) | [Publisher Full Text](#)
- Matthews DR, Hosker JP, Rudenski AS, *et al.*: **Homeostasis model assessment: insulin resistance and beta-cell function from fasting plasma glucose and insulin concentrations in man.** *Diabetologia.* 1985; **28**(7): 412–419.
[PubMed Abstract](#) | [Publisher Full Text](#)
- Salazar J, Bermúdez V, Calvo M, *et al.*: **Optimal cutoff for the evaluation of insulin resistance through triglyceride-glucose index: A cross-sectional study in a Venezuelan population [version 2; referees: 1 approved].** *F1000Research.* 2017; **6**: 1337.
[PubMed Abstract](#) | [Publisher Full Text](#) | [Free Full Text](#)
- Abel ED, O'Shea KM, Ramasamy R: **Insulin resistance: metabolic mechanisms and consequences in the heart.** *Arterioscler Thromb Vasc Biol.* 2012; **32**(9): 2068–76.
[PubMed Abstract](#) | [Publisher Full Text](#) | [Free Full Text](#)
- Bermúdez V, Marcano RP, Cano C, *et al.*: **The Maracaibo city metabolic syndrome prevalence study: design and scope.** *Am J Ther.* 2010; **17**(3): 288–294.
[PubMed Abstract](#) | [Publisher Full Text](#)
- Simental-Mendía LE, Rodríguez-Morán M, Guerrero-Romero F: **The product of fasting glucose and triglycerides as surrogate for identifying insulin resistance in apparently healthy subjects.** *Metab Syndr Relat Disord.* 2008; **6**(4): 299–304.
[PubMed Abstract](#) | [Publisher Full Text](#)
- McLaughlin T, Abbasi F, Cheal K, *et al.*: **Use of metabolic markers to identify overweight individuals who are insulin resistant.** *Ann Intern Med.* 2003; **139**(10): 802–9.
[PubMed Abstract](#) | [Publisher Full Text](#)
- Bermúdez V, Rojas J, Martínez MS, *et al.*: **Epidemiologic Behavior and Estimation of an Optimal Cut-Off Point for Homeostasis Model Assessment-2 Insulin Resistance: A Report from a Venezuelan Population.** *Int Sch Res Notices.* 2014; **2014**: 616271.
[PubMed Abstract](#) | [Publisher Full Text](#) | [Free Full Text](#)
- Bermúdez V, Salazar J, Bello L, *et al.*: **Coronary Risk Estimation According to a Recalibrated Framingham-Wilson Score in the Maracaibo City Metabolic Syndrome Prevalence Study.** *The Journal for Cardiology Photon.* 2014; **10**: 160–170.
[Reference Source](#)
- American Diabetes Association: **Standards of Medical Care in Diabetes-2017: Summary of Revisions.** *Diabetes Care.* 2017; **40**(Suppl 1): S4–S5.
[PubMed Abstract](#) | [Publisher Full Text](#)
- Bermúdez V, Rojas J, Salazar J, *et al.*: **Sensitivity and Specificity Improvement in Abdominal Obesity Diagnosis Using Cluster Analysis during Waist Circumference Cut-Off Point Selection.** *J Diabetes Res.* 2015; **2015**: 750265.
[PubMed Abstract](#) | [Publisher Full Text](#) | [Free Full Text](#)
- Bermúdez V, Cabrera M, Mendoza L, *et al.*: **Epidemiological behavior of high-sensitivity C-Reactive Protein (hs-CRP) in adult individuals in the Maracaibo city, Venezuela.** *Revista Latinoamericana de Hipertensión.* 2013; **8**: 16–24.
[Reference Source](#)
- Akobeng AK: **Understanding diagnostic tests 3: Receiver operating characteristic curves.** *Acta Paediatr.* 2007; **96**(5): 644–7.
[PubMed Abstract](#) | [Publisher Full Text](#)
- Demler OV, Pencina MJ, D'Agostino RB Sr: **Misuse of DeLong test to compare AUCs for nested models.** *Stat Med.* 2012; **31**(23): 2577–87.
[PubMed Abstract](#) | [Publisher Full Text](#) | [Free Full Text](#)
- Muniyappa R, Iantorno M, Quon MJ: **An integrated view of insulin resistance and endothelial dysfunction.** *Endocrinol Metab Clin North Am.* 2008; **37**(3): 685–711.
[PubMed Abstract](#) | [Publisher Full Text](#) | [Free Full Text](#)
- Bornfeldt KE, Tabas I: **Insulin resistance, hyperglycemia, and atherosclerosis.** *Cell Metab.* 2011; **14**(5): 575–585.
[PubMed Abstract](#) | [Publisher Full Text](#) | [Free Full Text](#)
- Martínez-Larrad MT, Lorenzo C, González-Villalpando C, *et al.*: **Associations between surrogate measures of insulin resistance and waist circumference, cardiovascular risk and the metabolic syndrome across Hispanic and non-Hispanic white populations.** *Diabet Med.* 2012; **29**(11): 1390–4.
[PubMed Abstract](#) | [Publisher Full Text](#)

23. Kim MK, Ahn CW, Kang S, *et al.*: **Relationship between the triglyceride glucose index and coronary artery calcification in Korean adults.** *Cardiovasc Diabetol.* 2017; **16**(1): 108.
[PubMed Abstract](#) | [Publisher Full Text](#) | [Free Full Text](#)
24. Kim JH, Lee DY, Park SE, *et al.*: **Triglyceride glucose index predicts coronary artery calcification better than other indices of insulin resistance in Korean adults: the Kangbuk Samsung Health Study.** *Precision and Future Medicine.* 2017; **1**(1): 43–51.
[Publisher Full Text](#)
25. Sánchez-Íñigo L, Navarro-González D, Fernández-Montero A, *et al.*: **The TyG index may predict the development of cardiovascular events.** *Eur J Clin Invest.* 2016; **46**(2): 189–97.
[PubMed Abstract](#) | [Publisher Full Text](#)
26. Irace C, Carallo C, Scavelli FB, *et al.*: **Markers of insulin resistance and carotid atherosclerosis. A comparison of the homeostasis model assessment and triglyceride glucose index.** *Int J Clin Pract.* 2013; **67**(7): 665–672.
[PubMed Abstract](#) | [Publisher Full Text](#)
27. Quijada Z, Paoli M, Zerpa Y, *et al.*: **The triglyceride/HDL-cholesterol ratio as a marker of cardiovascular risk in obese children; association with traditional and emergent risk factors.** *Pediatr Diabetes.* 2008; **9**(5): 464–71.
[PubMed Abstract](#) | [Publisher Full Text](#)
28. Salazar MR, Carbajal HA, Espeche WG, *et al.*: **Identifying cardiovascular disease risk and outcome: use of the plasma triglyceride/high-density lipoprotein cholesterol concentration ratio versus metabolic syndrome criteria.** *J Intern Med.* 2013; **273**(6): 595–601.
[PubMed Abstract](#) | [Publisher Full Text](#)
29. Salazar MR, Carbajal HA, Espeche WG, *et al.*: **Comparison of two surrogate estimates of insulin resistance to predict cardiovascular disease in apparently healthy individuals.** *Nutr Metab Cardiovasc Dis.* 2017; **27**(4): 366–373.
[PubMed Abstract](#) | [Publisher Full Text](#)
30. Du T, Yuan G, Zhang M, *et al.*: **Clinical usefulness of lipid ratios, visceral adiposity indicators, and the triglycerides and glucose index as risk markers of insulin resistance.** *Cardiovasc Diabetol.* 2014; **13**: 146.
[PubMed Abstract](#) | [Publisher Full Text](#) | [Free Full Text](#)
31. Wallace TM, Levy JC, Matthews DR: **Use and abuse of HOMA modeling.** *Diabetes Care.* 2004; **27**(6): 1487–95.
[PubMed Abstract](#) | [Publisher Full Text](#)
32. Watt MJ: **Storing up trouble: does accumulation of intramyocellular triglyceride protect skeletal muscle from insulin resistance?** *Clin Exp Pharmacol Physiol.* 2009; **36**(1): 5–11.
[PubMed Abstract](#) | [Publisher Full Text](#)
33. Kim SH, Reaven G: **Sex differences in insulin resistance and cardiovascular disease risk.** *J Clin Endocrinol Metab.* 2013; **98**(11): E1716–21.
[PubMed Abstract](#) | [Publisher Full Text](#) | [Free Full Text](#)
34. Salazar J, Bermúdez V, Olivar LC, *et al.*: **Dataset 1 in: Insulin resistance indices and coronary risk in adults from Maracaibo city, Venezuela: A cross sectional study.** *F1000Research.* 2018.
[Data Source](#)

Open Peer Review

Current Referee Status:  

Version 2

Referee Report 23 August 2018

doi:10.5256/f1000research.15459.r36517



Anirban Sinha 

Department of Endocrinology and Metabolism, Medical College and Hospital, Kolkata, India

This article is acceptable to me for indexing. Background of this study is very important as indices of insulin resistance is changing very fast and all of them may not be sensitive for different population throughout the world.

Study method is convincing and results are acceptable. 34.8% had coronary risk of >5% in 10 yrs which is reflective of population in real time. Tg/HDL and TyG indices were statistically Higher AUC than HOMA2-IR.

Overall this is a acceptable study which can be reproduced in different populations of the world.

Is the work clearly and accurately presented and does it cite the current literature?

Yes

Is the study design appropriate and is the work technically sound?

Yes

Are sufficient details of methods and analysis provided to allow replication by others?

Yes

If applicable, is the statistical analysis and its interpretation appropriate?

I cannot comment. A qualified statistician is required.

Are all the source data underlying the results available to ensure full reproducibility?

Yes

Are the conclusions drawn adequately supported by the results?

Yes

Competing Interests: No competing interests were disclosed.

Referee Expertise: I have worked in genetics, clinical studies of different endocrine disorders.

I have read this submission. I believe that I have an appropriate level of expertise to confirm that it is of an acceptable scientific standard.

Referee Report 22 March 2018

doi:10.5256/f1000research.15459.r31726



Miguel Murguía-Romero 

Iztacala School of Graduate Studies, National Autonomous University of Mexico (UNAM), Tlalnepantla, Mexico

The article has been improved by the corrections made by the authors.

I have only one suggestion. According to the calculations with the dataset used in the analysis ("Dataset 1: MMSPS Insulin resistance indices and coronary risk dataset"), the formula used by the authors is the one indicated by Salazar et al. 2017, as it is actually indicated in the text that cites reference 8: "In [Fasting triglyceride (mg / dl) x Fasting glucose (mg / dl)] / 2"

So, that is the formula that should be included in the text of the article (version 2).

Incorrectly, the formula is written in the text as: "In [Fasting triglyceride (mg / dl) x Fasting glucose (mg / dl) / 2]", as reported by Simental-Mendía et al. 2008.

Competing Interests: No competing interests were disclosed.

Referee Expertise: Biomedical informatics

I have read this submission. I believe that I have an appropriate level of expertise to confirm that it is of an acceptable scientific standard.

Version 1

Referee Report 22 February 2018

doi:10.5256/f1000research.14784.r30640



Miguel Murguía-Romero 

Iztacala School of Graduate Studies, National Autonomous University of Mexico (UNAM), Tlalnepantla, Mexico

The article "Insulin resistance indices and coronary risk in adults from Maracaibo city, Venezuela: A cross sectional study", supports the use of TyG and TG/HDL formulas as a reliable way to estimate the coronary risk in a Venezuelan population, contributing with the use of these indices in the study of Latin American populations.

This article is valuable specifically because:

- Addresses the research problem in an appropriate way using the Framingham-Wilson formula to evaluate coronary risk, and including relevant IR indices in the analysis.
- The results are valuable because the analysis by gender is included, as well as ROC curves are used to estimate the predictive capacity of the indices.
- The statistical analysis is well applied: the descriptive statistical is informative and contribute to adequately contextualize the sample characteristics; also the chosen tests, and the statistical parameter reported are adequate.
- The supplementary material is well structured and the data are congruent with the text (“General characteristics of the sample”) and with Table 1 (according to a rapid analysis I made importing the file into a database).

There are, however, several inconsistencies that may be corrected to improve it:

1. An inconsistency is evident in the formula of TyG; Simental et al. (2008) cite the TyG formula as:

$\ln[\text{fasting triglycerides (mg/dL)} \times \text{fasting glucose (mg/dL)}] / 2$

While this article cite TyG as:

$\ln[\text{fasting triglycerides (mg/dL)} \times \text{fasting glucose (mg/dL)}] / 2$

Are the differences between formulas only a typing error? I think authors have an opportunity to clarify which one of this formulas makes better sense for biomedical research along with the relationships between the physiological parameters included in this index.

2. At the header of Table 1, an “a” is missing in “Maracaibo”.
3. There is no correspondence between the declared quantity of participants with coronary risk bigger than 5% in the text (n=448; Page 4, 2nd column, 1st line) vs. the one reported in Table 1 (n=443)
4. The range of cell 1 in Table 1, written as “0.735 (0.707-0.63)”, is incongruent with the one reported in the text. Authors must clarified which one is the correct one.
5. Table 3, first column: “TG/HDL” instead “TAG/HDL”. Please, review it for homogeneity also in “Discussion”.

Is the work clearly and accurately presented and does it cite the current literature?

Yes

Is the study design appropriate and is the work technically sound?

Yes

Are sufficient details of methods and analysis provided to allow replication by others?

Yes

If applicable, is the statistical analysis and its interpretation appropriate?

Yes

Are all the source data underlying the results available to ensure full reproducibility?

Yes

Are the conclusions drawn adequately supported by the results?

Yes

Competing Interests: No competing interests were disclosed.

Referee Expertise: Biomedical informatics

I have read this submission. I believe that I have an appropriate level of expertise to confirm that it is of an acceptable scientific standard, however I have significant reservations, as outlined above.

The benefits of publishing with F1000Research:

- Your article is published within days, with no editorial bias
- You can publish traditional articles, null/negative results, case reports, data notes and more
- The peer review process is transparent and collaborative
- Your article is indexed in PubMed after passing peer review
- Dedicated customer support at every stage

For pre-submission enquiries, contact research@f1000.com

F1000Research