



Association of CD4⁺CD25⁺FoxP3⁺ regulatory T cells with natural course of childhood chronic immune thrombocytopenic purpura

Bo Ra Son, MD¹, Ji Yoon Kim, MD^{2,3}

¹Department of Laboratory Medicine, Chungbuk National University College of Medicine, Cheongju, ²Department of Pediatrics, Kyungpook National University School of Medicine, Daegu, ³Department of Pediatric Hematology-Oncology, Kyungpook National University Children's Hospital, Kyungpook National University Medical Center, Daegu, Korea

Purpose: The purpose of this study was to determine the frequency of CD4⁺CD25⁺FoxP3⁺ regulatory T cells (Treg) in the peripheral blood of patients with childhood chronic immune thrombocytopenic purpura (ITP) exhibiting thrombocytopenia and spontaneous remission. The findings of this study indicate the possibility of predicting spontaneous recovery and pathogenesis of childhood chronic ITP.

Methods: Eleven children with chronic ITP (seven thrombocytopenic and four spontaneous remission cases; mean age, 8.8 years; range, 1.7–14.9 years) were enrolled in this study. Five healthy children and eight healthy adults were included as controls. The frequency of Treg was evaluated by flow cytometry in the peripheral blood.

Results: In this study, four patients (36%) achieved spontaneous remission within 2.8 years (mean year; range, 1.0–4.4 years). The frequency of Treg was significantly lower in patients with persisting thrombocytopenia (0.13%±0.09%, $P<0.05$), than that in the patients with spontaneous remission (0.30%±0.02%), healthy adults controls (0.55%±0.44%), and healthy children controls (0.46%±0.26%). A significantly positive correlation was found between the frequency of Treg and the platelet count in children.

Conclusion: These data suggest that a lower frequency of Treg contributes to the breakdown of self-tolerance, and may form the basis for future development of specific immunomodulatory therapies. Furthermore, Treg frequency has prognostic implication toward the natural course and long-term outcomes of childhood chronic ITP.

Key words: Chronic immune thrombocytopenic purpura, Child, Spontaneous remission, Regulatory T cell

Corresponding author: Ji Yoon Kim, MD

Department of Pediatric Hematology-Oncology,
Kyungpook National University Children's Hospital,
Kyungpook National University Medical Center, 807
Hoguk-ro, Buk-gu, Daegu 702-210, Korea
Tel: +82-53-200-5704
Fax: +82-53-425-6683
E-mail: phojyk@gmail.com

Received: 20 April, 2015

Revised: 29 April, 2015

Accepted: 7 May, 2015

Introduction

To maintain the immune tolerance and to prevent autoimmune disease, CD4⁺CD25⁺FoxP3⁺ regulatory T cells (Treg), CD4⁺ T cells with high expression of CD25, and transcription factor forkhead box P3 (FoxP3), which is also named as FoxP3 regulatory T cells, play a fundamental role. Decreased number of Tregs and impairment of Tregs function have been reported in patients with various autoimmune diseases, such as systemic lupus erythematosus, rheumatic arthritis, multiple sclerosis, and diabetes as well as immune thrombocytopenic purpura (ITP)¹⁻⁴.

Childhood ITP is one of the most common benign hematologic disorders which is characterized by the isolated, immune-mediated thrombocytopenia and mucocutaneous bleeding. Childhood ITP is usually a self-limiting disease and is typically normalized within

Copyright © 2015 by The Korean Pediatric Society

This is an open-access article distributed under the terms of the Creative Commons Attribution Non-Commercial License (<http://creativecommons.org/licenses/by-nc/3.0/>) which permits unrestricted non-commercial use, distribution, and reproduction in any medium, provided the original work is properly cited.

several months. However, approximately 20%–30% of children have persistent thrombocytopenic states for more than 6–12 months, which is called the chronic ITP with increasing risk of bleeding⁵⁻⁷.

Chronic ITP is considered to be a pathogenically and clinically heterogeneous disease involving multifactorial autoimmune mechanisms of both humoral and cellular immunity⁸⁻¹¹. It is not easy to predict whether the newly diagnosed ITP is self-limiting or persisting and whether the thrombocytopenia can be recovered during follow-up period.

Fortunately, even in chronic ITP, spontaneous remission can occur within 5 years after diagnosis, in 30% to 60% of childhood chronic ITP patients¹². Several studies on the outcome of childhood chronic ITP have described some clinical prognostic factors. However, there is little information about the laboratory immunologic markers associated with spontaneous remission in chronic ITP. If the predictors or indicators of spontaneous remission and natural course in chronic childhood ITP can be confirmed, it will improve treatment strategies and quality of life as well as preventing unnecessary splenectomy and treatment cost for physicians, patients, and parents¹³⁻¹⁵.

Chronic ITP is considered to be a pathogenically and clinically heterogeneous disease involving multifactorial autoimmune mechanisms of both humoral and cellular immunity^{8,9}.

Recently, there have been increasing amount of evidences indicating that an impairment of regulatory T cells plays a critical role in pathogenesis of ITP¹⁶. However, there is little information about the role of Tregs for the patients with spontaneous remission from chronic ITP, compared to the persisting chronic ITP.

The objective of this study is to investigate the frequency of Treg in the peripheral blood of the childhood chronic ITP with thrombocytopenia and spontaneous remission. The findings in this study would elucidate the possibility of predicting the spontaneous recovery and pathogenesis of childhood chronic ITP.

Materials and methods

A prospective cohort analysis was conducted from the data of pediatric patients with chronic ITP, who were referred to our department during the past 7 years. In accordance with Institutional Review Board procedures at Chungbuk National University Hospital (2008-07-022), data from the medical records were analyzed after obtaining informed consents from the parents of each participant, prior to the study. A total of 11 patients with chronic ITP were enrolled in this study.

During the study period, all patients with chronic ITP were followed up with the intervals of 1–3 months, after 1 year from initial diagnosis. Finally, all chronic ITP patients were divided into two groups as follows: persistent group and spontaneous

remission group.

Chronic ITP was defined as having the persisting isolated thrombocytopenia for more than 12 months and platelet count of less than 150,000/mm³, which was used as the threshold for ITP diagnosis. All of the patients had primary ITP without any obvious initiating or underlying cause. Spontaneous remission was defined as having the platelet counts remaining above 150,000/mm³ for more than 6 months and/or 3 serial tests without ongoing treatment during follow-up.

Seven chronic ITP patients were allocated to persistent group (CITP-P) and the other four patients to spontaneous remission group of chronic ITP (CITP-SR). At the time of sampling, all patients had not received steroid or immunoglobulin therapy for at least 1 month.

Five healthy children and eight healthy adults were included in this study as controls. The following information was collected from the patients and controls at the time of their enrollment: sex, age at the enrollment and diagnosis, follow-up period, duration of disease, platelet count at the enrollment, and progress.

For blood sampling, 3 mL of peripheral venous blood was drawn into ethylenediaminetetraacetic acid tube for the complete blood count and flow cytometric analysis for the frequency of Treg. Treg was characterized by staining, using fluorescein isothiocyanate mouse antihuman CD4, allophycocyanin mouse antihuman CD25, and phycoerythrin mouse antihuman FoxP3 antibody (BD Pharmingen, San Diego, CA, USA) according to the manufacturer's instructions. Flow cytometry was performed using a FACScalibur cytometer and CELLQUEST software (BD biosciences, San Jose, CA, USA).

All statistical analyses were performed using SPSS ver. 17.0 (SPSS Inc., Chicago, IL, USA). Descriptive statistics were performed, including the mean and standard deviation for quantitative variables and number and percentage for qualitative variables. Normality was assessed by Shapiro-Wilk test. In pairwise comparison, Student *t* test were used for data fulfilled normal distribution. The Spearman rank correlation test was used to discover the strength of a link between two variables, for data did not fulfill normal distribution. In all tests, the level of significance was set at $P < 0.05$.

Results

Demographic and clinical data of all patients and healthy controls in this study are shown in Table 1. Among the enrolled 11 children with chronic ITP, the mean age at the time of this study was 8.78 years (1.75–14.89 years) and the mean age at initial diagnosis was 5.61 years (0.65–12.45 years). The mean duration of disease at the time of this study was 3.01 years (1.00–4.50 years). Compared to healthy children in the control group, the age and

Table 1. Patient group details and Treg frequency

Patient No.	Sex	Age at study (yr)	Age at Dx. (yr)	Follow-up (yr)	Disease duration (yr)	PLT ($\times 1,000/\text{mm}^3$)	Treg (%)
CITP-P							
1	F	3.5	1.6	1.9	1.9	78	0.00
2	M	8.6	4.5	4.1	4.1	133	0.08
3	M	10.5	8.0	2.5	2.5	29	0.26
4	F	9.4	5.0	4.3	4.3	34	0.06
5	F	14.5	10.0	4.5	4.5	50	0.14
6	M	6.0	3.6	2.3	2.3	59	0.14
7	M	14.9	12.5	2.4	2.4	108	0.23
CITP-SR							
1	M	10.8	7.8	2.6	2.3	155	0.26
2	F	1.7	0.7	1.1	1.0	158	0.30
3	M	9.5	5.9	3.4	3.4	172	0.31
4	F	7.1	2.2	5.1	4.4	175	0.31

Treg, CD4⁺ CD25⁺ FoxP3⁺ regulatory T cell; Dx., diagnosis; PLT, platelet count; ITP, immune thrombocytopenic purpura; CITP-P, chronic ITP with persisting thrombocytopenia; CITP-SR, chronic ITP with spontaneous remission.

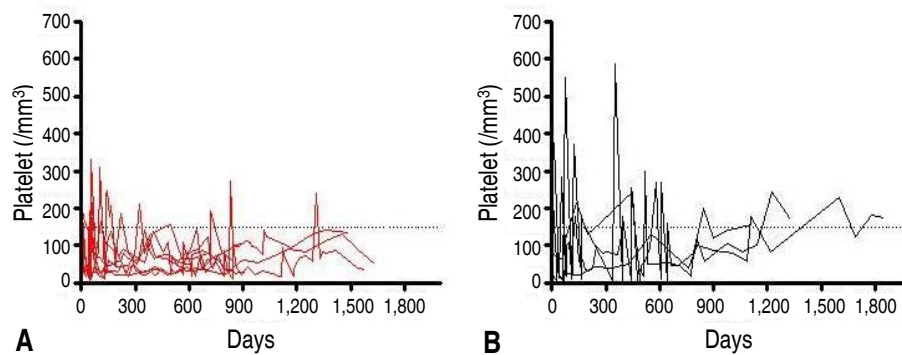


Fig. 1. Platelet count of patients with CITP-P (A) and CITP-SR (B) during the follow-up period. Steroid or immunoglobulin therapy was given to patients with severe thrombocytopenia and bleeding. ITP, immune thrombocytopenic purpura; CITP-P, chronic ITP with persisting thrombocytopenia; CITP-SR, chronic ITP with spontaneous remission.

sex ratio of all enrolled patients were not significantly different from the total chronic ITP patients.

During this study, 4 patients (36%) achieved spontaneous remission (Fig. 1). For the 4 CITP-SR patients, the mean age at the time of this study was 7.30 years (1.75–10.84 years) and the mean age at the initial diagnosis was 4.13 years (0.65–7.79 years). The mean duration of disease, which indicates the period between diagnosis and spontaneous remission, was 2.78 years (1.00–4.40 years) and the mean follow-up period was 3.20 years (1.70–5.10 years). The mean platelet count of CITP-SR patients, at the time of this study, was $165.0 \times 10^3/\text{mm}^3$ ($155\text{--}175 \times 10^3/\text{mm}^3$) (Table 1).

For the 7 CITP-P patients, the mean age at the time of this study was 9.62 years (3.50–14.89 years), and the mean age at the initial diagnosis was 6.45 years (1.56–12.45 years). The mean follow-up period, which also indicates the disease duration, was 3.14 years (1.90–4.50 years). The mean platelet count of CITP-P patients, at

the time of this study, was $70.1 \times 10^3/\text{mm}^3$ ($29\text{--}133 \times 10^3/\text{mm}^3$).

The frequency of Tregs in the patient subgroups and controls are shown in Table 2. The mean frequency of Tregs in the 7 CITP-P patients was $0.13\% \pm 0.09\%$ (0.00%–0.26%). It was significantly lower than that of CITP-SR ($0.30\% \pm 0.02\%$, 0.26%–0.31%), healthy adults controls ($0.55\% \pm 0.44\%$, 0.09%–1.50%), and healthy children controls ($0.46\% \pm 0.26\%$, 0.23%–0.86%) ($P < 0.05$). However, the frequency of Tregs in CITP-SR patients appeared to have decreased, compared to that of adults and children controls, but no statistical significance was shown ($P = 0.73$, $P = 0.214$). Among the healthy controls, the frequency of Treg in children controls seemed to be higher than that of adults controls; but, there was no statistical significance ($P = 0.943$).

For the total of 11 enrolled children with chronic ITP, the mean frequency of Tregs was $0.19\% \pm 0.11\%$ (0.00%–0.31%). It was significantly lower compared to the frequency of healthy adults

Table 2. Comparison between patient groups (CITP-P and CITP-SR) and control subjects

Parameter	Patient		Healthy control	
	CITP-P	CITP-SR	Children	Adults
No. of patients (M:F)	7 (4:3)	4 (2:2)	5 (3:2)	8 (2:6)
Age at study (yr)	9.62±4.16	7.30±4.01	6.56±2.18	27.58±2.98
Age at diagnosis (yr)	6.46±3.85	4.13±3.27	-	-
Follow-up period (yr)	3.14±1.10	2.78±1.46	-	-
PLT ($\times 1,000/\mu\text{L}$)	70.14±38.68 ^{*,†‡}	165.00±9.97 ^{†‡}	270.80±61.40	246.38±48.17
Tregs (%)	0.13±0.09 ^{*,†‡}	0.30±0.02	0.46±0.26	0.55±0.44

Values are presented as mean±standard deviation.

ITP, immune thrombocytopenic purpura; CITP-P, chronic ITP with persisting thrombocytopenia; CITP-SR, chronic ITP with spontaneous remission; PLT, platelet count; Tregs, CD4⁺CD25⁺FoxP3⁺ regulatory T cells.

*Significance compared to CITP-SR, $P<0.05$. †Significance compared to healthy children controls, $P<0.05$. ‡Significance compared to healthy adults controls, $P<0.05$.

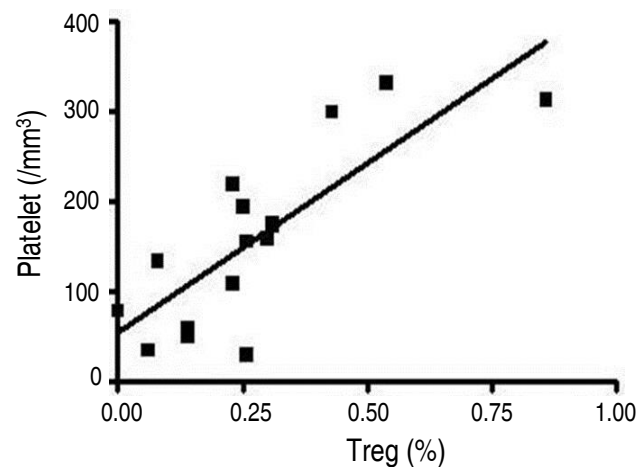


Fig. 2. Correlation between Treg frequencies and platelet count among all children ($r=0.732$, $P=0.01$). Treg, CD4⁺ CD25⁺ FoxP3⁺ regulatory T cell.

in the control group (0.55%±0.44%, 0.09%–1.50%, $P<0.05$). However, compared to that of healthy children in the control group (0.46%±0.26%, 0.23%–0.86%), the frequency of Tregs in the total chronic ITP patients appeared to have decreased, but there was no statistical significance ($P=0.052$).

A significantly positive correlation was found between the frequency of Treg and the platelet count in children ($r=0.732$, $P=0.01$) (Fig. 2). Other parameters such as sex, age at diagnosis, follow-up period, and duration of disease were not statistically correlated with the frequency of Tregs.

Discussion

In this study, four patients (36%) achieved spontaneous remission within 2.8 years (1–4.4 years) after being diagnosed as ITP. From this result, it should be noted that the children with chronic ITP had a higher chance of spontaneous remission, even

after the critical diagnosis; therefore, invasive therapy should be delayed. Several retrospective studies have reported that the overall spontaneous remission rate was from 30% to 80% with a follow-up period of up to 8 years, in the childhood chronic ITP patients^{12,15,17}.

There are few studies assessing the prognostic factors for predicting the outcome of ITP after diagnosis. Jayabose et al.¹⁴ reported that the spontaneous remission rate was 56%, and the clinical factors such as age, gender, initial platelet count, initial treatment, and response to treatment did not have any prognostic significance. Although it is important to investigate the characteristics of clinical features in the chronic ITP, we need to establish the optimal immunologic and laboratory predictors.

For the mechanisms of chronic ITP, there are increasing amount of evidences indicating that an impairment of regulatory T cells plays a critical role in the pathogenesis of ITP¹⁸. Many studies have demonstrated a decreased frequency of Tregs or imbalance of circulating Th cell-associated cytokines in the adult ITP, which suggests the loss of peripheral immune tolerance. However, some of the studies have failed to detect any differences in Treg frequencies of adults ITP patients, compared to healthy controls^{16,19}. These inconsistent results may mainly be due to the different phenotypes for Tregs according to investigators, the difficulty of methodology standardization, and the small accessible amount of Tregs which makes the study in children more difficult.

In the growing children, the role of Tregs is not fully elucidated; and there have been few studies related to predicting the natural course of the childhood chronic ITP^{1,3,19,20}.

As the possible immunologic predictors, Treg was investigated in this study. The frequency of Tregs in CITP-P was significantly lower than that of CITP-SR or healthy adults and children controls, and a significantly positive correlation was found between the frequency of Treg and the platelet count in children. This suggests that the decreased frequency of Tregs is associated with

the loss of immune tolerance for maintaining the platelet count, and recovery from the impairment of Tregs to normal level is associated with the spontaneous remission. However, there is no information on the normal levels of Tregs in children.

This study has several limitations. Our study was small-numbered and was conducted only at one point test. Further prospective cohort studies with immunologic and molecular investigations are needed to confirm our results.

The classic definition of chronic ITP is having a persistent thrombocytopenia for more than 6 months. Recently, the International Childhood ITP Study Group, American Society of Hematology guideline, and the international consensus statement have suggested that the criteria for the time of diagnosing chronic ITP should be reset to 12 months²¹⁻²³. However, our result, as well as others studies, have shown that some patients achieved the spontaneous remission 1 year after diagnosis. Therefore, it is the authors' opinion that since the chronic ITP ranges from newly diagnosed to spontaneous recovered or persisting thrombocytopenia, the persisting ITP should be used instead of the chronicity definition.

In conclusion, these data suggest that the low frequency of Treg would contribute to the breakdown of self-tolerance as well as forming a base for the specific immunomodulatory therapies of the future. Furthermore, they will have prognostic significance toward the natural course and long-term outcome of the childhood chronic ITP.

Conflict of interest

No potential conflict of interest relevant to this article was reported.

References

- Buckner JH. Mechanisms of impaired regulation by CD4(+)/CD25(+) FOXP3(+) regulatory T cells in human autoimmune diseases. *Nat Rev Immunol* 2010;10:849-59.
- Ochs HD, Gambineri E, Torgerson TR. IPEX, FOXP3 and regulatory T-cells: a model for autoimmunity. *Immunol Res* 2007;38:112-21.
- Sakaguchi S, Yamaguchi T, Nomura T, Ono M. Regulatory T cells and immune tolerance. *Cell* 2008;133:775-87.
- Yazdanbakhsh K, Zhong H, Bao W. Immune dysregulation in immune thrombocytopenia. *Semin Hematol* 2013;50 Suppl 1:S63-7.
- Cuker A, Cines DB. Immune thrombocytopenia. *Hematology Am Soc Hematol Educ Program* 2010;2010:377-84.
- Imbach P, Kuhne T, Muller D, Berchtold W, Zimmerman S, Elalfy M, et al. Childhood ITP: 12 months follow-up data from the prospective registry I of the Intercontinental Childhood ITP Study Group (ICIS). *Pediatr Blood Cancer* 2006;46:351-6.
- Bennett CM, Tarantino M. Chronic immune thrombocytopenia in children: epidemiology and clinical presentation. *Hematol Oncol Clin North Am* 2009;23:1223-38.
- Cines DB, Blanchette VS. Immune thrombocytopenic purpura. *N Engl J Med* 2002;346:995-1008.
- Stasi R, Evangelista ML, Stipa E, Buccisano F, Venditti A, Amadori S. Idiopathic thrombocytopenic purpura: current concepts in pathophysiology and management. *Thromb Haemost* 2008;99:4-13.
- Lazarus AH, Semple JW, Cines DB. Innate and adaptive immunity in immune thrombocytopenia. *Semin Hematol* 2013;50 Suppl 1: S68-70.
- Johnsen J. Pathogenesis in immune thrombocytopenia: new insights. *Hematology Am Soc Hematol Educ Program* 2012;2012: 306-12.
- Rosthøj S, Rajantie J, Treutiger I, Zeller B, Tedgård U, Henter JI, et al. Duration and morbidity of chronic immune thrombocytopenic purpura in children: five-year follow-up of a Nordic cohort. *Acta Paediatr* 2012;101:761-6.
- Heitink-Polle KM, Nijsten J, Boonacker CW, de Haas M, Bruin MC. Clinical and laboratory predictors of chronic immune thrombocytopenia in children: a systematic review and meta-analysis. *Blood* 2014;124:3295-307.
- Jayabose S, Levendoglu-Tugal O, Ozkaynak MF, Visintainer P, Sandoval C. Long-term outcome of chronic idiopathic thrombocytopenic purpura in children. *J Pediatr Hematol Oncol* 2004; 26:724-6.
- Yacubovich J, Revel-Vilk S, Tamary H. Childhood immune thrombocytopenia: who will spontaneously recover? *Semin Hematol* 2013;50 Suppl 1:S71-4.
- Andersson PO, Stockelberg D, Jacobsson S, Wadenvik H. A transforming growth factor-beta1-mediated bystander immune suppression could be associated with remission of chronic idiopathic thrombocytopenic purpura. *Ann Hematol* 2000;79:507-13.
- Shim YJ, Kim UH, Suh JK, Lee KS. Natural course of childhood chronic immune thrombocytopenia using the revised terminology and definitions of the international working group: a single center experience. *Blood Res* 2014;49:187-91.
- Godeau B. Immune thrombocytopenic purpura: major progress in knowledge of the pathophysiology and the therapeutic strategy, but still a lot of issues. *Presse Med* 2014;43(4 Pt 2):e47-8.
- Nishimoto T, Kuwana M. CD4+CD25+Foxp3+ regulatory T cells in the pathophysiology of immune thrombocytopenia. *Semin Hematol* 2013;50 Suppl 1:S43-9.
- Olsson B, Andersson PO, Jernas M, Jacobsson S, Carlsson B, Carlsson LM, et al. T-cell-mediated cytotoxicity toward platelets in chronic idiopathic thrombocytopenic purpura. *Nat Med* 2003; 9:1123-4.
- Provan D, Stasi R, Newland AC, Blanchette VS, Bolton-Maggs P, Bussel JB, et al. International consensus report on the investigation and management of primary immune thrombocytopenia. *Blood* 2010;115:168-86.
- Michel M. Immune thrombocytopenia nomenclature, consensus reports, and guidelines: what are the consequences for daily practice and clinical research? *Semin Hematol* 2013;50 Suppl 1: S50-4.
- Ruggeri M, Fortuna S, Rodeghiero F. Heterogeneity of terminology and clinical definitions in adult idiopathic thrombocytopenic purpura: a critical appraisal from a systematic review of the literature. *Haematologica* 2008;93:98-103.