

## Research Article

# Uncovering Synergistic Mechanism of Chinese Herbal Medicine in the Treatment of Atrial Fibrillation with Obstructive Sleep Apnea Hypopnea Syndrome by Network Pharmacology

Ting Mao,<sup>1,2</sup> Jingchun Zhang<sup>1,2</sup>, Yu Qiao,<sup>1,2</sup> Bei Liu,<sup>1,2</sup> and Shan Zhang<sup>1,2</sup>

<sup>1</sup>Cardiovascular Diseases Center of Xiyuan Hospital, China Academy of Chinese Medical Sciences, Beijing 100091, China

<sup>2</sup>Institute of Cardiovascular Diseases, China Academy of Chinese Medical Sciences, Beijing 100091, China

Correspondence should be addressed to Jingchun Zhang; zhangjingchun276@126.com

Received 9 August 2019; Revised 18 November 2019; Accepted 4 December 2019

Academic Editor: Simona Martinotti

Copyright © 2019 Ting Mao et al. This is an open access article distributed under the Creative Commons Attribution License, which permits unrestricted use, distribution, and reproduction in any medium, provided the original work is properly cited.

Paroxysmal atrial fibrillation (AF) combined with obstructive sleep apnea hypopnea syndrome (OSAHS) is very common in clinical practice. Traditional Chinese medicine (TCM) rule of regulating the liver based on psycho-cardiology shows satisfactory effectiveness in the treatment of paroxysmal AF combined with OSAHS. However, its underlying pharmacological mechanism has not yet been elucidated. This study applied network pharmacology to identify 94 active components in the six TCM liver-regulating herbs and 182 corresponding targets from several databases and comprehensive literature studies, as well as retrieved AF combined with OSAHS-related targets. Cytoscape software was adopted to construct the component-component target network and component-putative target-AF combined with OSAHS target network. Then, we obtained 38 putative therapeutic targets against AF combined with OSAHS. After the production of a putative therapeutic target interaction network, topological analysis was adopted to determine the core targets of TCM liver-regulating herbs in the treatment of paroxysmal AF combined with OSAHS. For all putative therapeutic targets, biological process analysis and pathway enrichment analysis were utilized to investigate the possible mechanism of TCM liver-regulating herbs in the treatment of paroxysmal AF combined with OSAHS. Mechanistically, it included positive regulation of nitric oxide biosynthetic process, aging, response to hypoxia, TNF signaling pathway, HIF-1 signaling pathway, PI3K-Akt signaling pathway, neuroactive ligand-receptor interaction, and calcium signaling pathway. Especially, six core targets of TCM liver-regulating herbs, namely, TNF, STAT3, AKT1, IL-6, TP53, and INS, were significant in the regulation of the above biological processes and pathways. This study demonstrates the multicomponent, multitarget, and multipathway feature of TCM liver-regulating herbs, provides an extensional foundation for further research, and facilitates the reasonable application of TCM liver-regulating herbs in treating paroxysmal AF combined with OSAHS.

## 1. Introduction

Atrial fibrillation (AF) is one of the most common types of arrhythmia during clinical practice and is associated with elevated cardiovascular morbidity and mortality rate [1]. Obstructive sleep apnea hypopnea syndrome (OSAHS) is an independent and vital risk factor for AF [2]. Several studies have revealed the increased incidence of AF in patients with OSAHS [3–6]. Conventional ventilator therapy is not recommended for moderate OSAHS patients. Antiarrhythmia

medicine is classical therapeutic treatment for AF, but adverse effects discouraged the patient compliance. Therefore, it is recognized that there is still an urgent need for more effective and safer treatment for AF combined with OSAHS. The latest research shows that Chinese herbal medicine can improve physical fitness, increase the ability to resist hypoxia, and inhibit inflammatory response, implying the possibility of integrating Traditional Chinese medicine (TCM) to improve paroxysmal AF combined with OSAHS and its prognosis [7]. Therefore, Chinese herbal medicine

alone or in combination with other drugs may become a promising drug for the treatment of AF combined with OSAHS.

TCM characteristic of AF patients with OSAHS who frequently showed irritability, anxiety, and depression is more likely complicated with qi depression and stagnation [8]. TCM rule of regulating the liver based on psychocardiology combined with tonifying qi to treat paroxysmal AF has comprehensive effectiveness in clinical practice for many years. Our previous analysis showed Chinese herbal medicine including Ziziphi Spinosa Semen (Suan Zao Ren (SZR)), Nardostachys Chinensis Batal (Gan Song (GS)), Corydalis Rhizoma (Yan Hu Suo (YHS)), Agrimony (Xian He Cao (XHC)), Tribulus terrestris (Ji Li (JL)), and Concha Ostreae (Mu Li (ML)) were more frequently used in related diseases [9]. Additionally, the clinical retrospective survey results conducted by our research team confirmed that these six TCM liver-regulating herbs are effective in relieving clinical symptoms of palpitation, maintaining sinus rhythm, shortening the duration of AF episodes, and improving the quality of life [9]. It is reported that Nardostachys Chinensis Batal extract has a membrane stabilizing effect, and it has a concentration-dependent inhibition on the sodium channel and L-type calcium channel in rabbit single ventricular myocytes [10]. Moreover, the classical compound Shensong Yangxin capsule containing Nardostachys Chinensis Batal is recommended to treat paroxysmal AF according to guidelines for the treatment of AF in China. Therefore, these TCM liver-regulating herbs have the potential to treat AF combined with OSAHS. Additionally, studies have found that Corydalis Rhizoma, Tribulus terrestris, and Ziziphi Spinosa Semen may maintain cellular homeostasis through regulating the level of gene expression, thereby improving overall function of cardiomyocytes. For instance, the antiarrhythmic effect of Corydalis Rhizoma is mainly through inhibition of IK, IK1, and tail current, prolonging the action potential duration and effective refractory period as well as suppressing calcium current and alleviating calcium overload [11]. Tribulus terrestris can protect cardiomyocyte from damage induced by adriamycin, which is possibly involved with its effect of resisting oxygen-free radical [12]. The research suggested that Jujuboside A may protect against norepinephrine-induced apoptosis of cardiomyocytes via modulation of the MAPK and AKT signaling pathways [13]. However, the feature of these above conventional experimental studies is one-drug-one-target-one-pathway, which ignores the multicomponent, multitarget, and multipathway characteristic of herbal formulae. Therefore, its active components and underlying pharmacological mechanism remain to be elucidated completely.

Additionally, herbal formulae possess the advantages of simplicity, convenience, efficiency, and economy. TCM syndrome differentiation and treatment conforms to the concept of individualized therapy in modern medicine. Herbal formulae can exert its therapeutic effect through acting on multiple targets and multiple pathways, so it is difficult to elucidate the mechanisms of action through conventional research [14]. Fortunately, with the rapid development and widespread application of bioinformatics,

the network pharmacology approach can be utilized to systemically reflect the correlation among multiple components, multiple targets, multiple pathways, and complex diseases. Therefore, the study aims to elucidate the pharmacological mechanism of TCM liver-regulating herbs in treating paroxysmal AF combined with OSAHS through network pharmacology. The technology roadmap is described in Figure 1.

## 2. Materials and Methods

**2.1. Identification of Active Components.** Active components of six TCM liver-regulating herbs were collected both from the Traditional Chinese medicine systems pharmacology (TCMSP ver.2.3, <http://lsp.nwu.edu.cn/tcmsp.php>, updated on May. 31, 2014) database and Bioinformatics Analysis Tool for Molecular mechANism of Traditional Chinese Medicine (BATMAN-TCM) platform (<http://bionet.ncpsb.org/batman-tcm/>). TCMSP database is the largest pharmacological data platforms for TCM. They encompass many herbs, chemical components, and pharmacokinetic properties, which include absorption, distribution, metabolism, and excretion (ADME) information in the Pharmacopoeia of the People's Republic of China (2010 edition). Owing to the disadvantages of biological experiments as being time-consuming and expensive, identification of ADME (absorption, distribution, metabolism, and excretion) characteristic has now become an acknowledged model in pharmaceutical research. In this study, two important ADME parameters including bioavailability (OB) and drug-likeness (DL) were utilized to screen bioactive components. The screening criteria are  $OB \geq 30\%$  and  $DL \geq 0.18$  [15, 16]. In addition, the databases of the China National Knowledge Infrastructure, Wanfang, and PubMed were also used to supplement any other omitted components. The cutoff parameter was set at 20, and the adjusted *P* value cutoff was set at 0.05 when we retrieved active components in BATMAN-TCM platform.

**2.2. Potential Targets of Active Components.** The validated targets of the active components were retrieved from both TCMSP database and BATMAN-TCM platform. BATMAN-TCM platform was used to predict targets of Concha Ostreae. Its principle is to identify potential target by calculating drug similarity and comparing target interactions [17]. The cutoff parameter was set at 20, and the adjusted *P* value cutoff was set at 0.05. Then, we used UniProt Knowledgebase (UniProtKB, <http://www.uniprot.org/>) to convert target protein names of active components into standard target gene names. This database provides the scientific community with a comprehensive, high-quality, and freely accessible resource of protein sequence and functional information. The target protein names were entered into UniProtKB, with the organism limited into "*Homo sapiens*," prior to the retrieval of the official symbol. Finally, the validated and predicted targets of the active components from six TCM liver-regulating herbs were obtained.

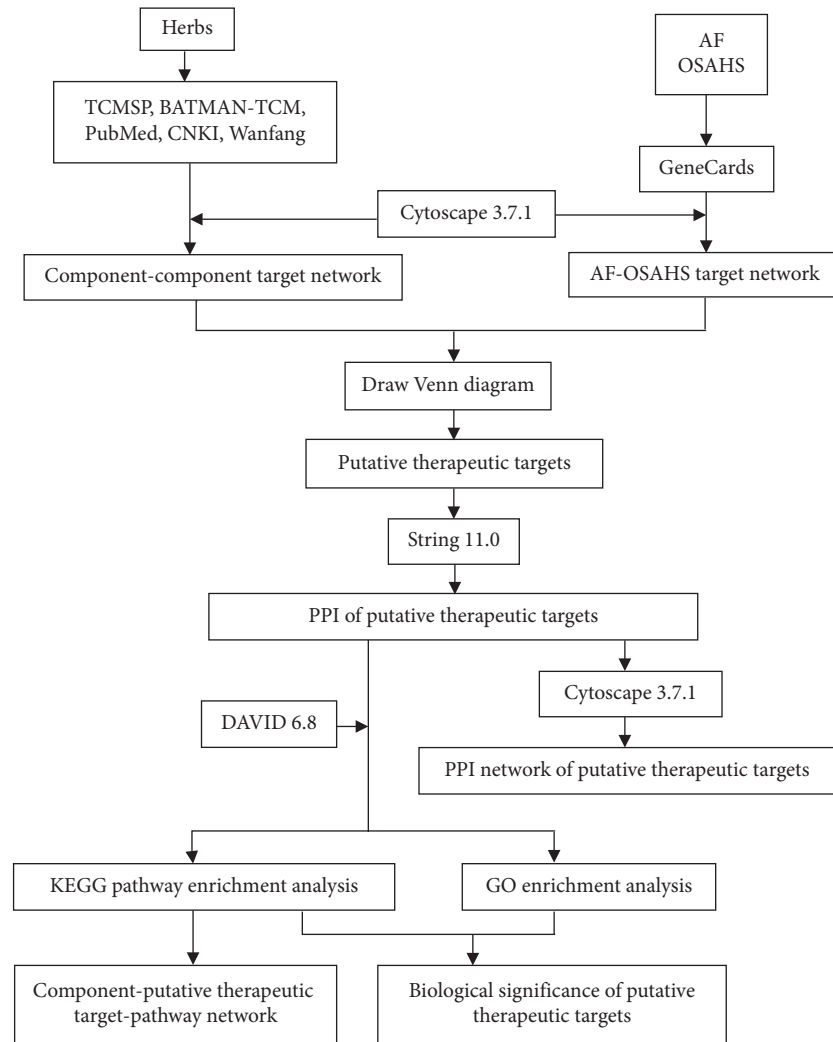


FIGURE 1: Technology roadmap of the pharmacological mechanism of TCM liver-regulating herbs in treating paroxysmal AF combined with OSAHS through network pharmacology.

**2.3. Targets Related to AF Combined with OSAHS.** *GeneCards* (<http://www.genecards.org/>) database is a searchable, integrative database that provides comprehensive, user-friendly information on all annotated and predicted human genes. It automatically integrates gene-centric data from 150 network sources, including genomic, transcriptomic, proteomic, genetic, clinical, and functional information. Then, targets were predicted by identifying the target genes associated with AF combined with OSAHS through *GeneCards* database.

**2.4. Protein-Protein Interaction Data.** Putative targets with therapeutic effects against AF combined with OSAHS were identified by intersecting the component targets and disease targets. Draw Venn Diagram (<http://bioinformatics.psb.ugent.be/webtools/Venn/>) was applied online to acquire the intersection between component targets and AF combined with OSAHS-related targets. The common target proteins of component and disease were used to construct protein-protein interaction (PPI) network on the Search Tool

for the Retrieval of Interacting Genes/Proteins (STRING, ver. 11.0, <https://string-db.org/>) platform, which is a database of validated and predicted PPIs, including both direct and indirect interactions among related proteins [18]. We set the organism limited to “*Homo sapiens*.” Eventually, we identified the PPI data of significant targets by the combined score. The combined score represents the interaction confidence of the protein, which has a positive correlation [19].

**2.5. Network Construction.** *Cytoscape 3.7.1* (<http://cytoscape.org/>) software was adopted to visually display and analyze the network structure of closely related proteins [20]. It can visualize molecular interaction networks, biological pathways, and related genes. *Cytoscape* renders a set of data integration, analysis, and visualization functions to analyze complicated networks. We input targets and PPI data into *Cytoscape* to construct networks. There, three networks were constructed in this study as follows: (1) a component-component target network was established by joining active components of herbs and corresponding

targets; (2) a component-putative target-AF combined with OSAHS target network was constructed by intersecting the component-component target network and AF combined with OSAHS-related target network; and (3) a component-putative therapeutic target-pathway network was constructed by linking herb components, potential therapeutic targets, and pathways. The core network was determined by topological analysis. We applied network topological feature value to collect core network. Three topological feature parameters of each node were evaluated in the network. The three parameters contain degree centrality (DC), betweenness centrality (BC), and closeness centrality (CC) of nodes. The DC represents the number of edges connecting two nodes in the network [21]. The higher the degree is, the more important the node is. The BC shows the participation of nodes in the shortest part of the network and embodies the ability of nodes to handle the rate of information flow in the network [22]. The CC is the inverse of the sum of the distance from a node to other nodes. The magnitude of the important parameters is positive proportional to the importance of node in the network [23]. Firstly, we selected “ $DC > 2 \times \text{median}$ ” as the primary screening criteria. Eventually, nodes that satisfy the median of aforementioned topological parameters simultaneously is called core targets, and the related network is regarded as core network.

**2.6. Gene Ontology and Pathway Enrichment Analysis.** The Database for Annotation, Visualization, and Integrated Discovery (DAVID 6.8, <https://david.ncifcrf.gov/>) was utilized for the Gene Ontology (GO) and Kyoto encyclopedia of genes and genomes (KEGG) enrichment analysis, which are the classical analysis approach performed to elucidate the properties of candidate targets in gene function and pathway [24, 25]. GO enrichment analysis involves biological process (BP), cell component (CC), and molecular functions (MF). DAVID provides high-throughput functional annotation bioinformatics to perform functional annotation and enrichment analysis. The cutoff of recognized GO terms is set to  $FDR < 0.01$  and KEGG pathways is set to  $P$  value  $< 0.05$  [26, 27].

### 3. Results

**3.1. Herbs Active Component Data.** We obtained 265 components from the six TCM liver-regulating herbs after removing duplication. The bioactive components were screened out by OB and DL. The 94 active components from the six TCM liver-regulating herbs were searched in domestic and foreign literature databases, TCMSP database, and BATMAN-TCM platform. In addition to the above 86 bioactive components, 8 components with low OB and DL were considered active components, because of their reported therapeutic effects. These components were also selected for further study because of their good pharmacological effects. In brief, 94 active components from the six TCM liver-regulating herbs were collected for further research analysis, including 9 in SZR, 8 in GS, 51 in YHS, 10 in XHC, 14 in JL, and 6 in ML (Supplemental Table 1).

**3.2. Target Prediction of Herb Component.** A total of 2152 candidate targets from the 94 active components were identified by applying the target prediction model. Then, these targets were standardized into official gene symbol. 2071 official gene symbols were finally transformed. The amount of potential target genes was 80, 90, 1493, 232, 143, and 33 from SZR, GS, YHS, XHC, JL and ML, respectively. Eventually, we identified 182 target genes from 2071 potential target genes hit by 94 active components after deletion of duplication (Supplemental Table 2). Targets from SZR, GS, and YHS were overlapped significantly with YHS, which indicates that different components from herbs can share the same or similar targets. At the same time, it indicated that targets from YHS play a vital role in synergistic effects.

**3.3. Component-Component Target Network Analysis.** To further illustrate the action of components on potential targets, we applied Cytoscape 3.7.1 software to visualize the component target network. The network consists of 268 nodes (94 active components and 182 component targets) and 2156 edges (Figure 2). The network suggests that not only a single component acts on multiple targets but also various targets are hit by one component. Specially, the number of candidate targets for quercetin, kaempferol, and isocorypalmine are 164, 104, and 50, respectively, indicating that these three active components are pivotal in these TCM liver-regulating herbs. This implies that the herb component may play a pharmacological role in other diseases in addition to AF. Meanwhile, the network illustrates the multicomponent, multitarget, and multidisease characteristics of herbal formulae.

**3.4. Component-Putative Target-AF Combined with OSAHS Target Network Analysis.** We retrieved 232 targets of AF combined with OSAHS (Supplemental Table 3). TCM liver-regulating herbs shared 50 common targets with AF, while 75 with OSAHS. There are 38 overlapping targets of herbs in treating AF combined with OSAHS. We constructed a network to illustrate the relationship among herb components, component targets with therapeutic effects against AF combined with OSAHS, and AF combined with OSAHS-related targets. The network consists of 311 nodes (78 component nodes, 38 common target nodes between component targets and AF combined with OSAHS-related targets, 232 AF combined with OSAHS-related target nodes, and 1 AF combined with OSAHS node) and 802 edges (Figure 3). This network shows that the component targets are also shared by AF combined with OSAHS targets, which suggests that herbs may indirectly regulate disease-related proteins. At least, these six herbs may also indirectly affect related targets by regulating common proteins.

**3.5. PPI Network Analysis.** In order to elucidate the systemic and pharmacological mechanism of TCM liver-regulating herbs in treating AF combined with OSAHS, we first constructed and visualized a PPI network of 38 putative targets

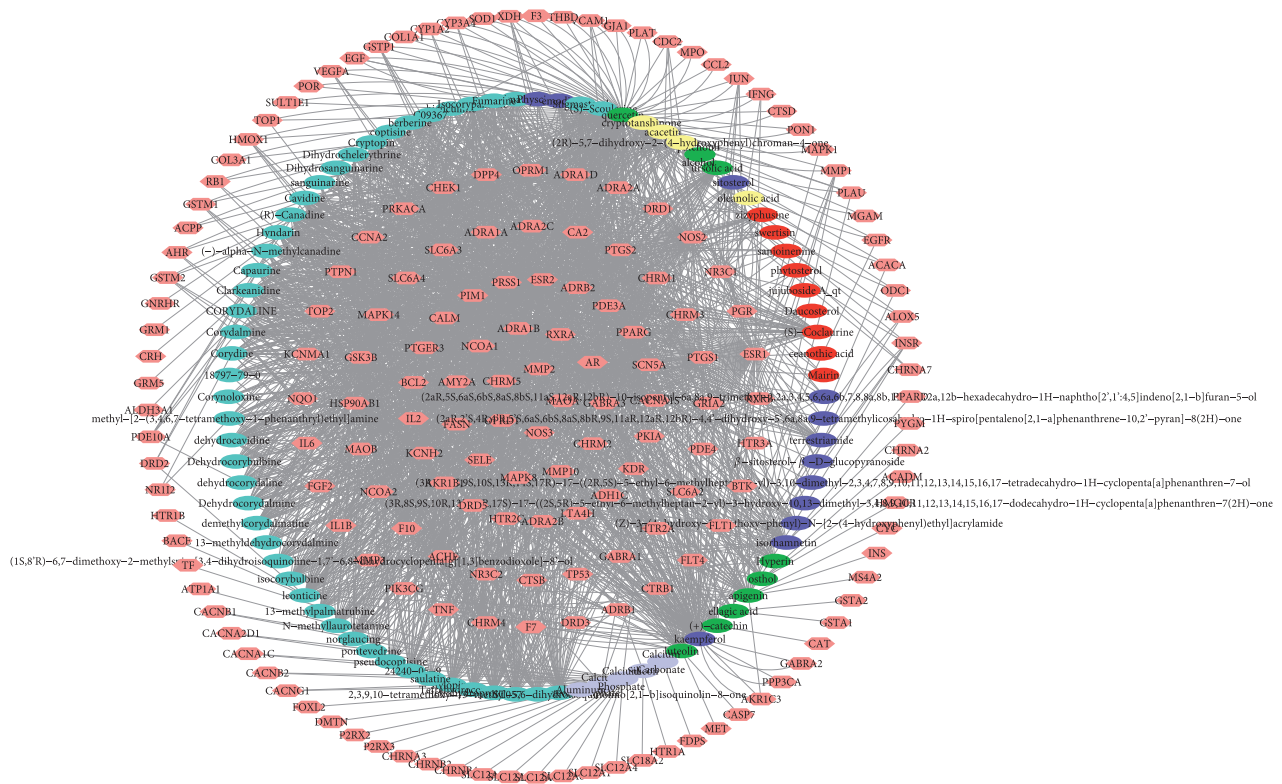


FIGURE 2: Active component-component target network. Pink represents the component target. Red, yellow, light blue, green, dark blue, and purple represent active components of SZR, GS, YHS, XHC, JL, and ML, respectively.

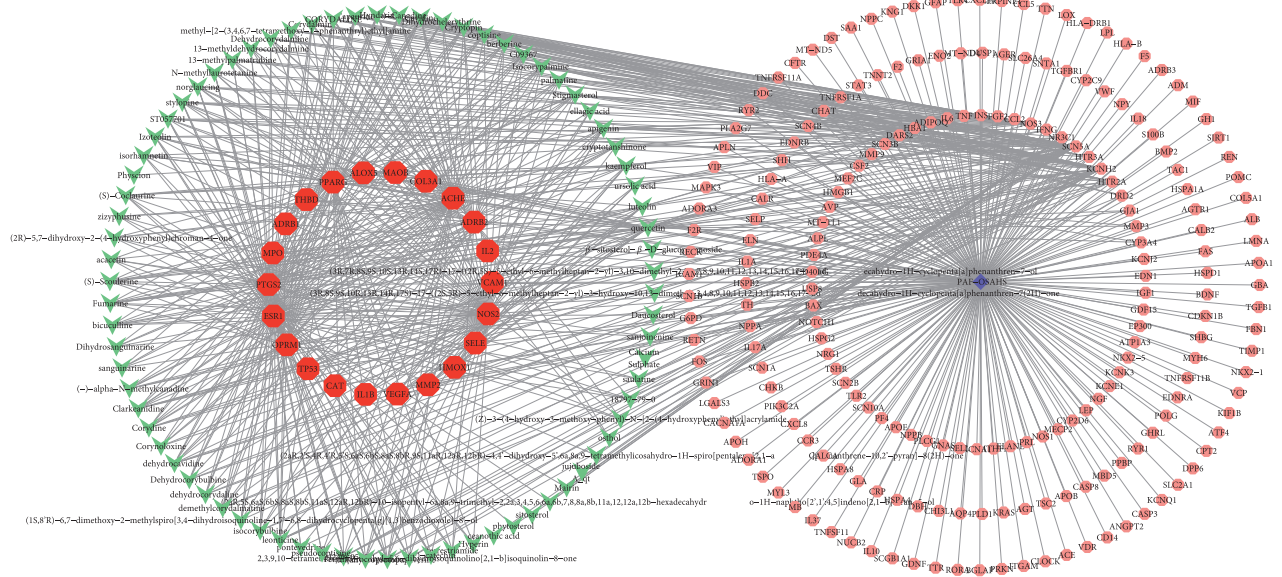


FIGURE 3: Component-putative target-AF combined with OSAHS target network. The green nodes represent component, the red nodes represent common targets between component targets and AF combined with OSAHS targets, and pink nodes represent AF combined with OSAHS targets.

with therapeutic effects against AF combined with OSAHS. Totally, we obtained 88 nodes and 505 edges in this network (Figure 4). Then, topological analysis was adopted to determine the core targets of TCM liver-regulating herbs in the treatment of paroxysmal AF combined with OSAHS. For

instance, we first applied the topological method to evaluate the hub network according to the topology analysis screening criteria “ $DC \geq 2 \times \text{median}$ .” On this basis, the target that satisfied the median of DC, BC, and CC synchronously is screened as the core targets. The PPI network

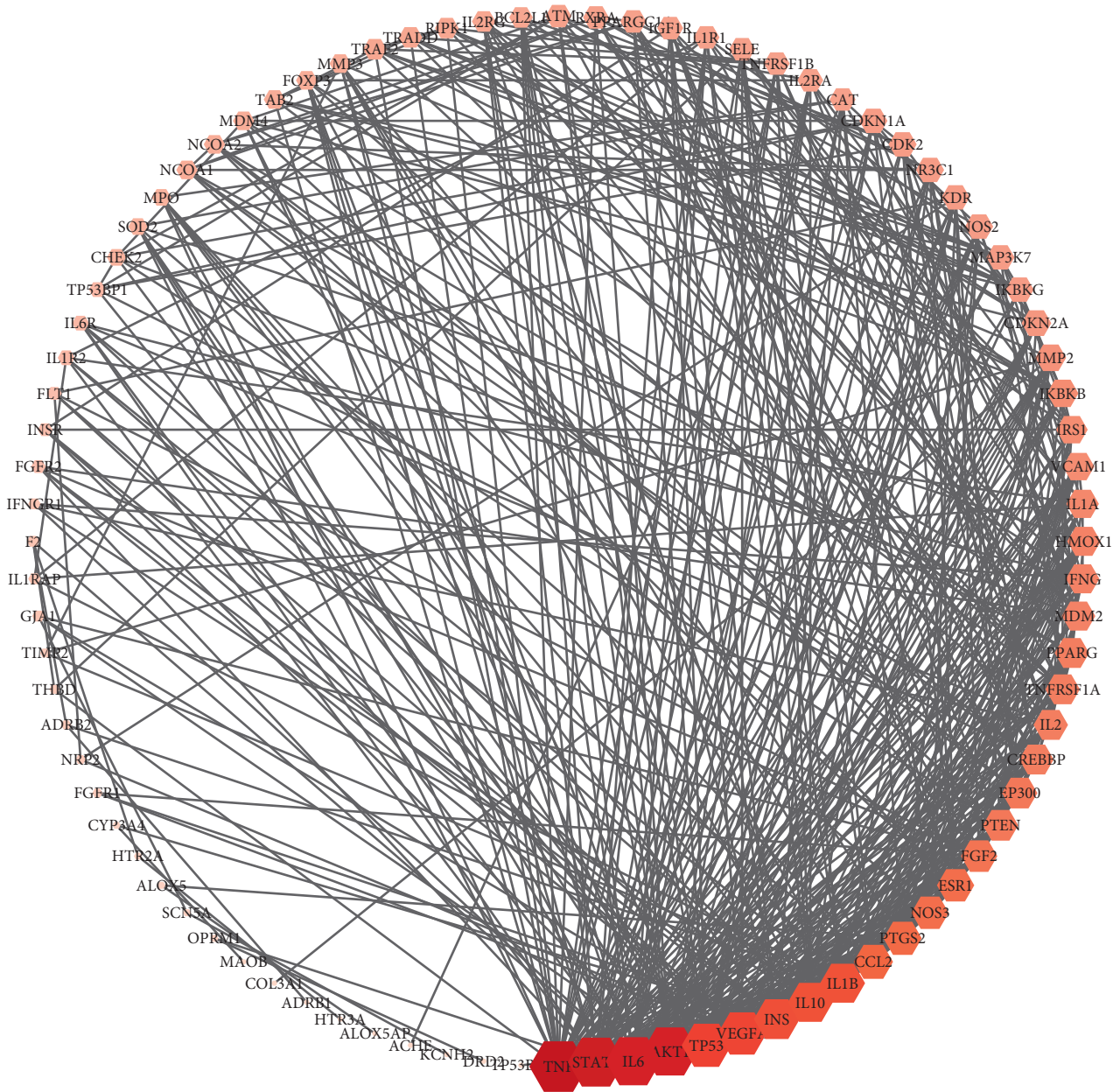


FIGURE 4: PPI network of 38 putative therapeutic targets of herbs in the treatment of AF combined with OSAHS. The nodes represent common targets for herb treatment of AF combined with OSAHS as well as other related human target genes. The size of nodes suggests the degree, and the larger the nodes are and closer the nodes are to red, the higher the degree they have.

is beneficial to explore the interaction of various proteins in complex diseases. Finally, we identified six core targets of TCM liver-regulating herbs in treating AF combined with OSAHS (Supplemental Table 4). These core targets included TNF, STAT3, AKT1, IL6, TP53, and INS, indicating that they serve as vital targets of TCM liver-regulating herbs in treating AF combined with OSAHS.

**3.6. GO and KEGG Enrichment Analysis.** To illustrate the mechanism of herbs on AF combined with OSAHS from a systematic level, we performed GO analysis and KEGG pathway enrichment analysis for 38 putative therapeutic targets. Totally, we identified 233 enrichment results in the

related items of biological process, 41 of molecular functions, and 23 of cell components (Supplemental Table 5). Then, 19 significant enriched GO terms were determined, including 14 biological processes, 3 molecular functions, and 2 cell components (Figure 5). For biological process, these putative therapeutic targets were mainly enriched in positive regulation of nitric oxide biosynthetic process (GO:0045429), aging (GO:0007568), response to hypoxia (GO:0001666), positive regulation of ERK1 and ERK2 cascade (GO:0070374), positive regulation of vasodilation (GO:0045909), positive regulation of transcription from RNA polymerase II promoter (GO:0045944), positive regulation of chemokine biosynthetic process (GO:0045080), response to lipopolysaccharide (GO:0032496), positive regulation of gene

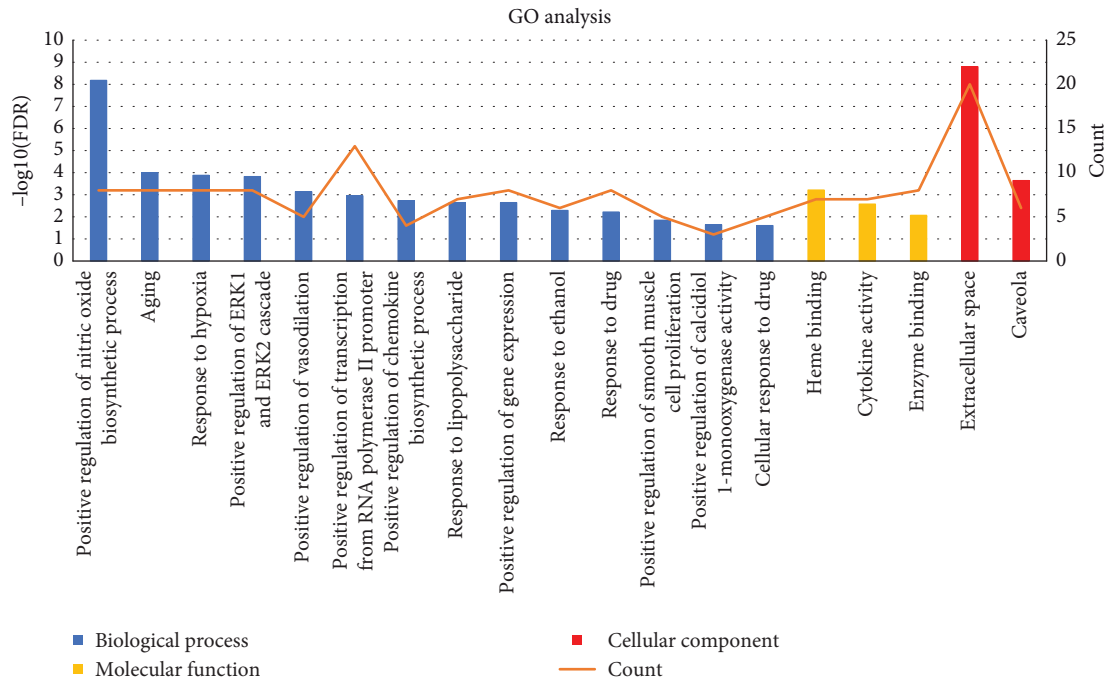


FIGURE 5: GO enrichment analysis of putative therapeutic targets. The Y-axis shows the enrichment scores of these terms or the counts of targets, and the X-axis shows significantly enriched GO categories of the target genes (FDR < 0.01).

expression (GO:0010628), response to ethanol (GO:0045471), response to drug (GO:0042493), positive regulation of smooth muscle cell proliferation (GO:0048661), positive regulation of caldiol 1-monooxygenase activity (GO:0060559), and cellular response to drug (GO:0035690). For molecular function, the targets were enriched in heme binding (GO:0020037), cytokine activity (GO:0005125), and enzyme binding (GO:0019899). For the cell component, the targets were enriched in extracellular space (GO:0005615) and caveola (GO:0005901). Therefore, the results indicated that TCM liver-regulating herbs mainly exert therapeutic effects by regulating these biological processes, molecular functions, and cell components.

We performed KEGG pathway enrichment analysis to expound the pathways among the 38 putative therapeutic targets of herbs in the treatment of AF combined with OSAHS. A total of 48 pathways were obtained (Supplemental Table 6), 19 of which were significantly enriched (Figure 6), mainly including TNF signaling pathway (hsa04668), HIF-1 signaling pathway (hsa04066), cytokine-cytokine receptor interaction (hsa04060), PI3K-Akt signaling pathway (hsa04151), neuroactive ligand-receptor interaction (hsa04080), serotonergic synapse (hsa04726), and calcium signaling pathway (hsa04020). It indicated that these top 7 signaling pathways might be involved in the critical pharmacological mechanism of TCM liver-regulating herbs in the treatment of AF combined with OSAHS. It is precisely these above transduction pathways that play essential role in OSAHS to induce and aggravate AF. Meanwhile, it could provide potential evidence for exploring drug therapeutic targets for AF combined with OSAHS.

**3.7. Component-Putative Therapeutic Target-Pathway Network Analysis.** In order to more holistically present the mechanism of TCM liver-regulating herbs in treating AF combined with OSAHS, we intersected component-component target network, AF combined with OSAHS network, and the involved KEGG pathway to construct a component-putative therapeutic target-pathway network (Figure 7). The interaction above revealed the pharmacological and molecular mechanisms of TCM liver-regulating herbs treating AF combined with OSAHS.

## 4. Discussion

Chinese herbal medicine with multiple components produces therapeutic effect through acting on multiple targets and pathways. Network pharmacology is a comprehensive approach based on traditional pharmacology, bioinformatics, chemoinformatics, and network biology. This approach enables researchers to explore regulation of the signaling pathways with multiple targets and optimize the objective of clinical trials [28]. It is widely considered as a supplementary approach to identify components and pharmacological mechanisms of Chinese herbal medicine from a comprehensive perspective [29]. Therefore, we apply network pharmacology to construct a component-component target network, component-putative therapeutic target-AF combined with OSAHS target network, and component-putative therapeutic target-pathway network to systematically explore the pharmacological and molecular mechanisms of TCM liver-regulating herbs in the treatment of paroxysmal AF combined with OSAHS.

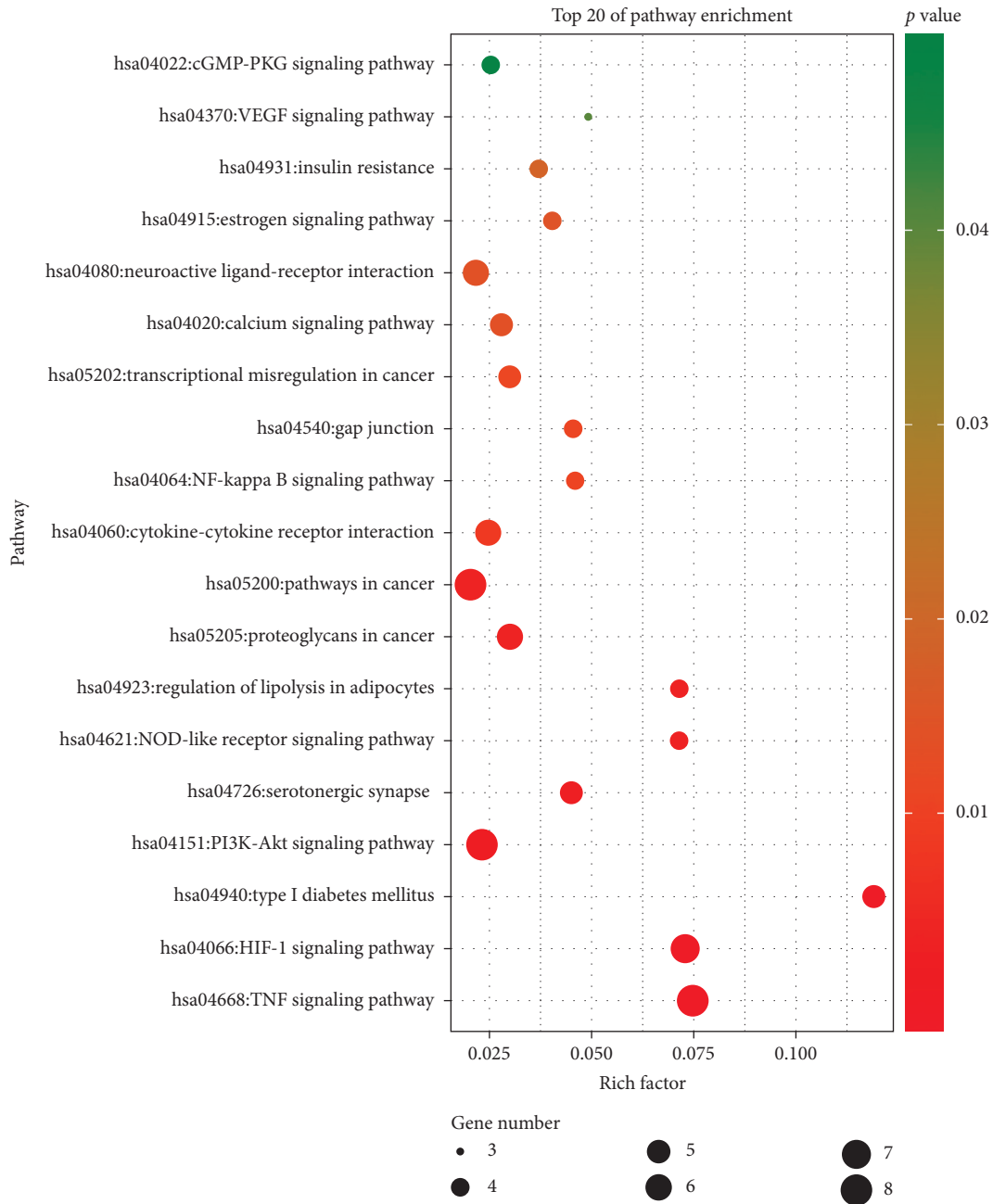


FIGURE 6: KEGG pathway enrichment analysis of putative therapeutic targets. The Y-axis represents significantly pathways of the target genes, and the X-axis shows the rich factor. The rich factor represents the ratio of the number of target genes belonging to a pathway to the number of all the annotated genes located in the pathway. A higher rich factor represents a higher level of enrichment. The color of the dot corresponds to different  $P$  values, and the size of the dot reflects the number of target genes expressed in the pathway.

In the component-component target network, quercetin, kaempferol, and sitosterol were recognized as significant active components. Quercetin and kaempferol account for most of the putative targets from six TCM liver-regulating herbs, suggesting that the two active components play critical role in pharmacological mechanism of TCM liver-regulating herbs. Quercetin was shown to be associated with a variety of AF combined with OSAHS targets, including TNF, IL-6, SCN5A, NOS2, NOS3, and PPARG. Several reports have demonstrated that quercetin possesses

antioxidative, anti-inflammatory activities, antiproliferative activities, and free radical-scavenging [30, 31]. It is reported that quercetin prevented cardiac hypertrophy by proteasome inhibition and activation of GSK-3 $\alpha/\beta$ , which is related to upstream (AKT, LKB1/AMPK $\alpha$ ) and downstream hypertrophic factors, such as ERK, histone H3,  $\beta$ -catenin, and GATA4 [32]. Early research demonstrated that quercetin decreased myocardial  $[Ca^{2+}]_i$ -oscillation frequency and prevented cardiac remodeling [33]. The investigation indicated that treatment with kaempferol protects against



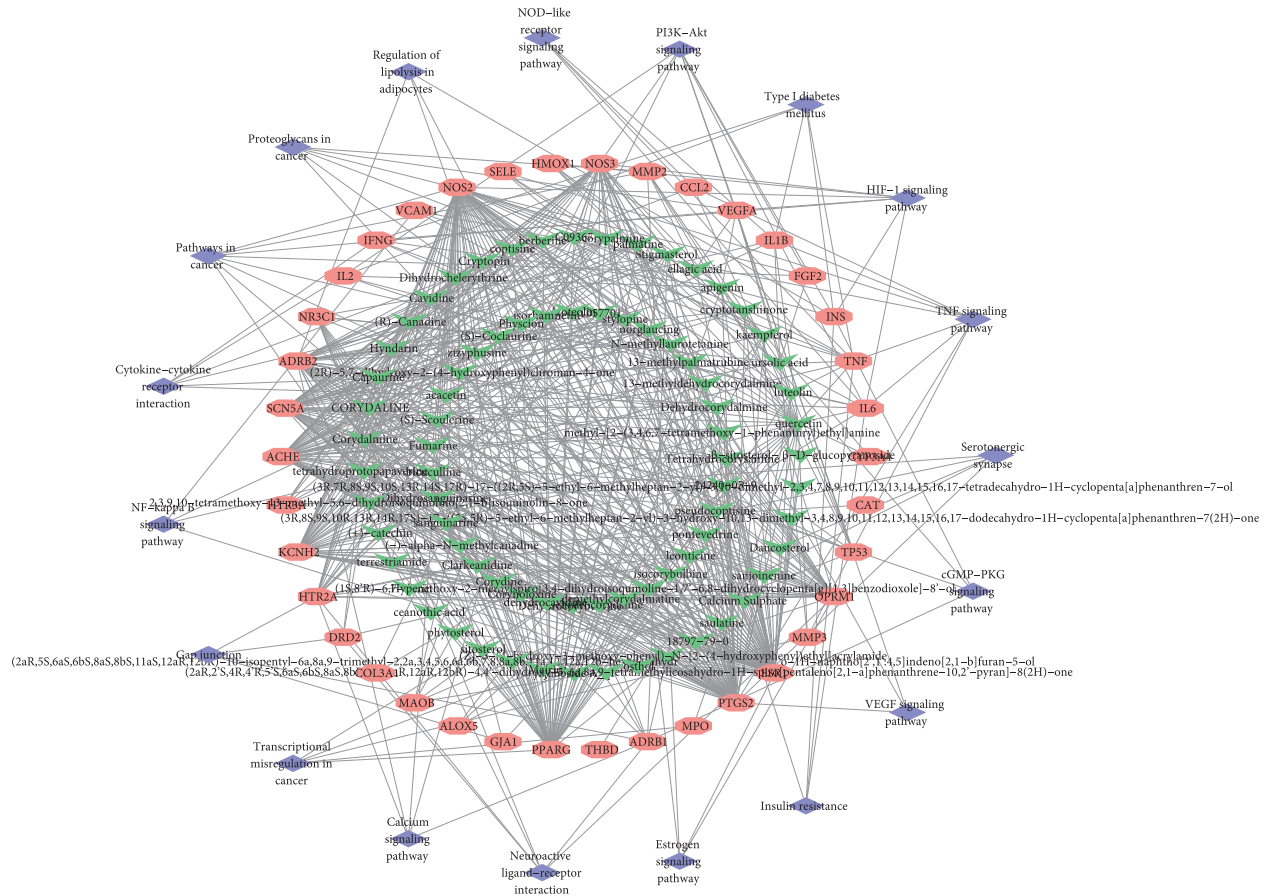


FIGURE 7: Putative therapeutic active component-putative therapeutic target and pathway network. Green represents the putative therapeutic active component, pink represents the putative therapeutic target, and purple represents the KEGG pathway.

cardiac hypertrophy, and its cardioprotective effect may be partially explained by the inhibition of the ASK1/MAPK signaling pathway and the regulation of oxidative stress [34]. Additionally, kaempferol attenuated cardiac fibroblast inflammation through inhibition of release of  $TNF-\alpha$ ,  $IL-1\beta$ ,  $IL-6$ , and  $IL-18$  and suppression of activation of  $NF-\kappa B$  and  $AKT$  [35]. The proliferation and activation of cardiac fibroblasts can be inhibited by kaempferol [36].

In the AF combined with the OSAHS target network,  $INS$ ,  $IL6$ , and  $TNF$  are selected as the hub nodes. Insulin resistance induces both atrial structural remodeling and abnormal intracellular calcium homeostasis, contributing to increased AF susceptibility [37]. It is reported that insulin resistance-induced AF was associated with impairment in the trafficking and expression of the major cardiac isoform  $GLUT4$  and the novel isoform  $GLUT8$  [38]. Inflammatory markers  $IL-6$  and  $TNF$  play an essential role in the occurrence and development of AF. Conversely, AF generates an inflammatory response that further enhances atrial remodeling and perpetuates the arrhythmia. Studies have reported that higher levels of  $IL-6$  and  $TNF$  as well as elevated neutrophil and lymphocyte ratios have been reported in patients with AF compared with those in the sinus rhythm [39]. Meanwhile, AF can be prevented by inhibiting inflammation, further highlighting the relation between inflammation and AF [40].

In the component-putative therapeutic target-pathway network, 38 therapeutic targets were primarily modulated by quercetin, luteolin, kaempferol, apigenin, stigmasterol, isocorypalmine, and hyndarin. The 6 core targets were determined by network topology analysis, including  $TNF$ ,  $STAT3$ ,  $AKT1$ ,  $IL-6$ ,  $TP53$ , and  $INS$ . Various inflammatory cytokines regulate the function of ion channels and calcium homeostasis.  $TNF$  induces abnormal  $Ca^{2+}$  level and arrhythmogenesis in cardiomyocytes [41].  $TNF$  can also decrease the expression of sarcoplasmic/endoplasmic reticulum  $Ca-ATPase$  [42]. Furthermore, mice with an elevated  $TNF$  level have increased susceptibility to AF and accelerated spontaneous AF onset [43]. These studies have suggested that  $TNF$  may be crucial for AF occurrence and atrial electrical remodeling.  $IL-6$ , levels of circulating  $IL-6$ , and other proinflammatory molecules have consistently been associated with a risk for AF and its recurrence after catheter ablation [44]. It is reported that  $IL-6$  elevation rapidly induces atrial electrical remodeling by down-regulating cardiac connexins [45]. Targeting inflammatory mediators, particularly  $IL-6$ , may represent in perspective an innovative approach in antiarrhythmic therapy [46]. For  $STAT3$ , activation of the  $JAK-STAT3$  signaling pathway may lead to fibrosis in many organs, including the heart. Atrial fibrosis in patients with AF is induced by increase in ROS production and subsequently activation of  $STAT3$  and

SMAD3 signaling [47]. For AKT1, Ang II infusion upregulated PSMB10 expression and AKT1 activation leading to cardiac fibrosis [48]. TP53, which can control cell proliferation, DNA repair, and cell death, is one of the most commonly inactivated tumor suppressors in human cancers [49]. For INS, it is suggested that insulin resistance promotes atrium electrical remodeling and might be related to AF recurrence after PVI [50]. Insulin-resistant (IR) animals demonstrated an increased vulnerability to induced AF, as well as spontaneous AF.

In this study, we performed enrichment analysis to clarify the multiple mechanisms of TCM liver-regulating herbs against AF combined with OSAHS from a holistic and systematic perspective. In the GO enrichment analysis, the targets were closely related to positive regulation of nitric oxide biosynthetic process, aging, response to hypoxia, and positive regulation of ERK1 and ERK2 cascade. The results suggested that TCM liver-regulating herbs may exert therapeutic effect through acting on these biological processes. In the KEGG pathway enrichment analysis, we obtained that the pathways mainly associated with AF combined with OSAHS were TNF signaling pathway, HIF-1 signaling pathway, PI3K-Akt signaling pathway, neuroactive ligand-receptor interaction, and calcium signaling pathway. It is shown that oxidative stress and inflammation associated with OSAHS have been implicated in AF initiation and perpetuation [51]. Elevated oxidative stress and inflammation including HIF1 signaling pathway and TNF signaling pathway play essential role in high risk of episode of AF. Activation of systemic and atrial RAAS combining with atrial oxidative stress and inflammation may contribute to atrial remodeling in OSAHS, potentially severing as an arrhythmogenic substrate for AF occurrence [52]. Research found that telmisartan reduced susceptibility to atrial arrhythmia, ameliorated atrial remodeling, and reversed imbalances in the RAS-ERK and PI3K-Akt pathway [53]. Evidence showed that Shensong Yangxin suppressed atrial electrical remodeling by regulating autonomic nerve activity and decreased levels of TNF- $\alpha$  and IL-6 [54]. The upregulation of K<sup>+</sup> channel expression and downregulation of Ca<sup>2+</sup> channel expression in OSAHS experimental models contribute to shortening of AERP and increase in AF susceptibility [55]. Recurrent nocturnal apneas and hypoxia during sleep in patients with OSAHS induced sympathetic nervous system imbalance preceding the initiation of paroxysmal AF [56, 57]. Therefore, the study demonstrated that the mechanism of TCM liver-regulating herbs against AF combined with OSAHS might be closely associated with these signaling pathways.

## 5. Conclusions

In the present study, we identified 94 active components of six TCM liver-regulating herbs and 182 component targets, showing the characteristic of multicomponent and multi-target of herbs. The herbs exerted therapeutic effects on AF combined with OSAHS by acting on 38 targets, which were primarily hit by quercetin, luteolin, kaempferol, apigenin, stigmasterol, isocorypalmine, and hyndarin. Additionally, 6

core targets were identified by network topology analysis, namely, TNF, STAT3, AKT1, IL6, TP53, and INS. The GO enrichment analysis demonstrated that the therapeutic targets of herbs in the treatment of AF combined with OSAHS might be tightly associated with biological processes, for instance, positive regulation of nitric oxide biosynthetic process, aging, response to hypoxia, positive regulation of ERK1 and ERK2 cascade, positive regulation of vasodilation, and positive regulation of transcription from RNA polymerase II promoter. Moreover, the KEGG pathway enrichment analysis indicated that the action target of herbs might be closely related with multiple signaling pathway, including TNF signaling pathway, HIF-1 signaling pathway, PI3K-Akt signaling pathway, cytokine-cytokine receptor interaction, neuroactive ligand-receptor interaction, and calcium signaling pathway. These pathways play significant role in therapeutic effects of TCM liver-regulating herbs in the treatment of AF combined with OSAHS.

In summary, the present study systemically analyzed the complicate correlation among multiple components, targets, and pathways for TCM liver-regulating herbs in the treatment of AF combined with OSAHS. The results explored the pharmacological and molecular mechanisms of TCM liver-regulating herbs acting on paroxysmal AF combined with OSAHS, which may lay a good theoretical foundation for further experimental verification and facilitate the widespread application of TCM liver-regulating herbs in treating arrhythmia. However, further experimental research is urgently needed to verify the prediction.

## Data Availability

The data used to support the research are available from the Supplementary Materials uploaded with this article.

## Conflicts of Interest

The authors declare that they have no conflicts of interest.

## Authors' Contributions

Jingchun Zhang conceived and supervised the research. Ting Mao designed this study, implemented the methods, performed the data analysis, and drafted the manuscript. Yu Qiao provided valuable suggestions for data analysis and figure design. Bei Liu searched the databases. Shan Zhang created the illustrations. Jingchun Zhang revised the final manuscript and was responsible for the funding. All authors have reviewed and approved the final manuscript.

## Acknowledgments

This study was financially supported by the National Natural Science Foundation of China (Grant nos. 81573817 and 81373825).

## Supplementary Materials

Supplemental Table 1: 94 active components of TCM liver-regulating herbs were collected, of which 9 in SZR, 8 in GS,

51 in YHS, 10 in XHC, 14 in JL, and 6 in ML. Supplemental Table 2: targets of the active components from TCM liver-regulating herbs. The number of these target genes was 80, 90, 1493, 232, 143, and 33 from the corresponding active components of SZR, GS, YHS, XHC, JL, and ML, respectively. After removing duplicates, we identified 182 target genes from 2071 potential target genes out of 94 bioactive components. Supplemental Table 3: we retrieved 232 targets of AF combined with OSAHS from GeneCards database. Supplemental Table 4: after the production of a putative therapeutic target interaction network, topological analysis was adopted to determine the core targets of TCM liver-regulating herbs in the treatment of paroxysmal AF combined with OSAHS. Totally, six core targets including TNF, STAT3, AKT1, IL6, TP53, and INS were identified. Supplemental Table 5: to illustrate the mechanism of herbs on AF combined with OSAHS from a systematic level, we performed GO enrichment analysis for putative therapeutic targets. Totally, we identified 233 enrichment results in the related items of biological process, 41 of molecular function, and 23 of cell component. Supplemental Table 6: KEGG pathway enrichment analysis was performed to expound the pathways among the putative therapeutic targets of herbs in the treatment of AF combined with OSAHS. A total of 48 pathways were obtained. (*Supplementary Materials*)

## References

- [1] S. S. Chugh, R. Havmoeller, K. Narayanan et al., "Worldwide epidemiology of atrial fibrillation," *Circulation*, vol. 129, no. 8, pp. 837–847, 2014.
- [2] Y. Kwon, R. J. Koene, A. R. Johnson, G.-M. Lin, and J. D. Ferguson, "Sleep, sleep apnea and atrial fibrillation: questions and answers," *Sleep Medicine Reviews*, vol. 39, pp. 134–142, 2018.
- [3] G. Cadby, N. McArdle, T. Briffa et al., "Severity of OSA is an independent predictor of incident atrial fibrillation hospitalization in a large sleep-clinic cohort," *Chest*, vol. 148, no. 4, pp. 945–952, 2015.
- [4] T. Tanigawa, K. Yamagishi, S. Sakurai et al., "Arterial oxygen desaturation during sleep and atrial fibrillation," *Heart*, vol. 92, no. 12, pp. 1854–1855, 2006.
- [5] A. S. Gami, D. O. Hodge, R. M. Herges et al., "Obstructive sleep apnea, obesity, and the risk of incident atrial fibrillation," *Journal of the American College of Cardiology*, vol. 49, no. 5, pp. 565–571, 2007.
- [6] M. C. Valenza, A. Baranchuk, G. Valenza-Demet, T. Muñoz-Casaubon, J. A. Martin-Navajas, and J. Healey, "Prevalence of risk factors for atrial fibrillation and stroke among 1210 patients with sleep disordered breathing," *International Journal of Cardiology*, vol. 174, no. 1, pp. 73–76, 2014.
- [7] R. Kleemann, L. Verschuren, M. Morrison et al., "Anti-inflammatory, anti-proliferative and anti-atherosclerotic effects of quercetin in human in vitro and in vivo models," *Atherosclerosis*, vol. 218, no. 1, pp. 44–52, 2011.
- [8] CIMACCP Group, "Expert consensus on the diagnosis and treatment of psycho-cardiological disease with integrated traditional Chinese and western medicine," *Chinese General Practice*, vol. 20, no. 14, pp. 1659–1662, 2017.
- [9] S. Lei, *Study on the Rule of Medication Used in the Treatment of Arrhythmia from the Liver Based on Data Mining*, Graduate School of Beijing University of Chinese Medicine, Beijing University of Chinese Medicine, Beijing, China, 2017, in Chinese.
- [10] Q. Tang, Z. Huang, X. Shi, T. Wang, and D. Shi, "Effects of gansong extract on sodium and calcium channels in rabbit ventricular myocytes," *Chinese Journal of Cardiology*, vol. 32, no. Supplement, pp. 267–270, 2004, in Chinese.
- [11] Z. Y. Zhou, W. R. Zhao, W. T. Shi et al., "Endothelial-dependent and independent vascular relaxation effect of tetrahydropalmatine on rat aorta," *Frontiers in Pharmacology*, vol. 10, p. 336, 2019.
- [12] S. Zhang, H. Li, H. Xu, and S. J. Yang, "Effect of gross saponins of *Tribulus terrestris* on cardiocytes impaired by adriamycin," *Yao Xue Xue Bao*, vol. 45, no. 1, pp. 31–36, 2010, in Chinese.
- [13] C. R. Wan, D. D. Han, J. Q. Xu et al., "Jujuboside A attenuates norepinephrine-induced apoptosis of H9c2 cardiomyocytes by modulating MAPK and AKT signaling pathways," *Molecular Medicine Reports*, vol. 17, no. 1, pp. 1132–1140, 2018.
- [14] L. Wu, Y. Wang, J. Nie, X. Fan, and Y. Cheng, "A network pharmacology approach to evaluating the efficacy of Chinese medicine using genome-wide transcriptional expression data," *Evidence-Based Complementary and Alternative Medicine*, vol. 2013, Article ID 915343, 8 pages, 2013.
- [15] J. Huang, L. Li, F. Cheung et al., "Network pharmacology-based approach to investigate the analgesic efficacy and molecular targets of Xuanguai dropping pill for treating primary dysmenorrhea," *Evidence-Based Complementary and Alternative Medicine*, vol. 2017, Article ID 7525179, 12 pages, 2017.
- [16] B. Li, J. Rui, X. Ding, and X. Yang, "Exploring the multi-component synergy mechanism of Banxia Xiexin decoction on irritable bowel syndrome by a systems pharmacology strategy," *Journal of Ethnopharmacology*, vol. 233, pp. 158–168, 2019.
- [17] Z. Liu, F. Guo, Y. Wang et al., "BATMAN-TCM: a bioinformatics analysis Tool for molecular mechanism of traditional Chinese medicine," *Scientific Reports*, vol. 6, no. 1, p. 21146, 2016.
- [18] S. Hillenmeyer, L. K. Davis, E. R. Gamazon, E. H. Cook, N. J. Cox, and R. B. Altman, "STAMS: STRING-assisted module search for genome wide association studies and application to autism," *Bioinformatics*, vol. 32, no. 24, pp. 3815–3822, 2016.
- [19] D. Szklarczyk, A. Franceschini, M. Kuhn et al., "The STRING database in 2011: functional interaction networks of proteins, globally integrated and scored," *Nucleic Acids Research*, vol. 39, no. Database, pp. D561–D568, 2011.
- [20] A. Baryshnikova, "Exploratory analysis of biological networks through visualization, clustering, and functional annotation in cytoscape," *Cold Spring Harbor Protocols*, vol. 2016, no. 6, 2016.
- [21] P. V. Missiuro, K. Liu, L. Zou et al., "Information flow analysis of interactome networks," *PLoS Computational Biology*, vol. 5, no. 4, Article ID e1000350, 2009.
- [22] K. Raman, N. Damaraju, and G. K. Joshi, "The organisational structure of protein networks: revisiting the centrality-lethality hypothesis," *Systems and Synthetic Biology*, vol. 8, no. 1, pp. 73–81, 2014.
- [23] H. Li, X. Zhao, J. Wang, M. Zong, and H. Yang, "Bioinformatics analysis of gene expression profile data to screen key genes involved in pulmonary sarcoidosis," *Gene*, vol. 596, pp. 98–104, 2017.
- [24] D. Huang, B. T. Sherman, Q. Tan et al., "The DAVID gene functional classification tool: a novel biological module-

- centric algorithm to functionally analyze large gene lists," *Genome Biology*, vol. 8, no. 9, p. R183, 2007.
- [25] Q. Yang, S. Wang, E. Dai et al., "Pathway enrichment analysis approach based on topological structure and updated annotation of pathway," *Briefings in Bioinformatics*, vol. 20, no. 1, pp. 168–177, 2019.
- [26] H.-m. Li, H. Yang, D.-y. Wen et al., "Overexpression of LncRNA HOTAIR is associated with poor prognosis in thyroid carcinoma: a study based on TCGA and GEO data," *Hormone and Metabolic Research*, vol. 49, no. 5, pp. 388–399, 2017.
- [27] M. Lyu, C. L. Yan, H. X. Liu et al., "Network pharmacology exploration reveals endothelial inflammation as a common mechanism for stroke and coronary artery disease treatment of Danhong injection," *Scientific Reports*, vol. 7, no. 1, p. 15427, 2017.
- [28] T. T. Luo, Y. Lu, S. K. Yan, X. Xiao, X. L. Rong, and J. Guo, "Network pharmacology in research of Chinese medicine formula: methodology, application and prospective," *Chinese Journal of Integrative Medicine*, pp. 1–9, 2019.
- [29] W. Zhang, Y. Bai, Y. Wang, and W. Xiao, "Polypharmacology in drug Discovery: a review from systems pharmacology perspective," *Current Pharmaceutical Design*, vol. 22, no. 21, pp. 3171–3181, 2016.
- [30] C.-Y. Liu, Y.-C. Lin, J.-S. Deng, J.-C. Liao, W.-H. Peng, and G.-J. Huang, "Antioxidant, anti-inflammatory, and anti-proliferative activities of *Taxillus sutchuenensis*," *The American Journal of Chinese Medicine*, vol. 40, no. 2, pp. 335–348, 2012.
- [31] Y.-C. Chen, S.-C. Shen, L.-G. Chen, T. J.-F. Lee, and L.-L. Yang, "Wogonin, baicalin, and baicalein inhibition of inducible nitric oxide synthase and cyclooxygenase-2 gene expressions induced by nitric oxide synthase inhibitors and lipopolysaccharide," *Biochemical Pharmacology*, vol. 61, no. 11, pp. 1417–1427, 2001.
- [32] K. Chen, M. Rekep, W. Wei et al., "Quercetin prevents in vivo and in vitro myocardial hypertrophy through the proteasome-GSK-3 pathway," *Cardiovascular Drugs and Therapy*, vol. 32, no. 1, pp. 5–21, 2018.
- [33] Y. Wang, H. Y. Wang, Z. K. Yuan, X. N. Zhao, J. X. Wang, and Z. X. Zhang, "Quercetin decreased heart rate and cardiomyocyte  $Ca^{2+}$  oscillation frequency in rats and prevented cardiac hypertrophy in mice," *Acta Pharmacologica Sinica*, vol. 20, no. 5, pp. 426–430, 1999.
- [34] H. Feng, J. Cao, G. Zhang, and Y. Wang, "Kaempferol attenuates cardiac hypertrophy via regulation of ASK1/MAPK signaling pathway and oxidative stress," *Planta Medica*, vol. 83, no. 10, pp. 837–845, 2017.
- [35] X.-l. Tang, J.-x. Liu, W. Dong et al., "Protective effect of kaempferol on LPS plus ATP-induced inflammatory response in cardiac fibroblasts," *Inflammation*, vol. 38, no. 1, pp. 94–101, 2015.
- [36] Y. Liu, L. Gao, S. Guo et al., "Kaempferol alleviates angiotensin II-induced cardiac dysfunction and interstitial fibrosis in mice," *Cellular Physiology and Biochemistry*, vol. 43, no. 6, pp. 2253–2263, 2017.
- [37] Y. H. Chan, G. J. Chang, Y. J. Lai et al., "Atrial fibrillation and its arrhythmogenesis associated with insulin resistance," *Cardiovascular Diabetology*, vol. 18, no. 1, p. 125, 2019.
- [38] Z. Maria, A. R. Campolo, B. J. Scherlag, J. W. Ritchey, and V. A. Lacombe, "Dysregulation of insulin-sensitive glucose transporters during insulin resistance-induced atrial fibrillation," *Biochimica et Biophysica Acta (BBA)—Molecular Basis of Disease*, vol. 1864, no. 4, pp. 987–996, 2018.
- [39] S. I. Sazonova, J. N. Ilushenkova, R. E. Batalov et al., "Plasma markers of myocardial inflammation at isolated atrial fibrillation," *Journal of Arrhythmia*, vol. 34, no. 5, pp. 493–500, 2018.
- [40] D. R. Van Wagoner and M. K. Chung, "Inflammation, inflammasome activation, and atrial fibrillation," *Circulation*, vol. 138, no. 20, pp. 2243–2246, 2018.
- [41] S.-H. Lee, Y.-C. Chen, Y.-J. Chen et al., "Tumor necrosis factor- $\alpha$  alters calcium handling and increases arrhythmogenesis of pulmonary vein cardiomyocytes," *Life Sciences*, vol. 80, no. 19, pp. 1806–1815, 2007.
- [42] Y.-H. Kao, Y.-C. Chen, C.-C. Cheng, T.-I. Lee, Y.-J. Chen, and S.-A. Chen, "Tumor necrosis factor- $\alpha$  decreases sarcoplasmic reticulum  $Ca^{2+}$ -ATPase expressions via the promoter methylation in cardiomyocytes," *Critical Care Medicine*, vol. 38, no. 1, pp. 217–222, 2010.
- [43] S. E. Sawaya, Y. S. Rajawat, T. G. Rami et al., "Downregulation of connexin40 and increased prevalence of atrial arrhythmias in transgenic mice with cardiac-restricted overexpression of tumor necrosis factor," *American Journal of Physiology-Heart and Circulatory Physiology*, vol. 292, no. 3, pp. H1561–H1567, 2007.
- [44] M. D. Smit, A. H. Maass, A. M. De Jong, A. C. Muller Kobold, D. J. Van Veldhuisen, and I. C. Van Gelder, "Role of inflammation in early atrial fibrillation recurrence," *Europace*, vol. 14, no. 6, pp. 810–817, 2012.
- [45] P. E. Lazzarini, F. Laghi-Pasini, M. Acampa et al., "Systemic inflammation rapidly induces reversible atrial electrical remodeling: the role of interleukin-6-mediated changes in connexin expression," *Journal of the American Heart Association*, vol. 8, no. 16, Article ID e011006, 2019.
- [46] P. E. Lazzarini, M. Acampa, P. L. Capecchi et al., "Antiarrhythmic potential of anticytokine therapy in rheumatoid arthritis: tocilizumab reduces corrected QT interval by controlling systemic inflammation," *Arthritis Care & Research*, vol. 67, no. 3, pp. 332–339, 2015.
- [47] Q. Dong, S. Li, W. Wang et al., "FGF23 regulates atrial fibrosis in atrial fibrillation by mediating the STAT3 and SMAD3 pathways," *Journal of Cellular Physiology*, vol. 234, no. 11, pp. 19502–19510, 2019.
- [48] J. Li, S. Wang, J. Bai et al., "Novel role for the immunoproteasome subunit PSMB10 in angiotensin II-induced atrial fibrillation in mice," *Hypertension*, vol. 71, no. 5, pp. 866–876, 2018.
- [49] M. Lacroix, R. Riscal, G. Arena, L. K. Linares, and L. Le Cam, "Metabolic functions of the tumor suppressor p53: implications in normal physiology, metabolic disorders, and cancer," *Molecular Metabolism*, 2019.
- [50] N. Hijioka, M. Kamioka, Y. Matsumoto et al., "Clinical impact of insulin resistance on pulmonary vein isolation outcome in patients with paroxysmal atrial fibrillation," *Journal of Cardiovascular Electrophysiology*, vol. 30, no. 4, pp. 479–486, 2019.
- [51] P. Korantzopoulos, K. Letsas, N. Fragakis, G. Tse, and T. Liu, "Oxidative stress and atrial fibrillation: an update," *Free Radical Research*, vol. 52, no. 11–12, pp. 1199–1209, 2018.
- [52] F. Mayyas, K. H. Alzoubi, and D. R. Van Wagoner, "Impact of aldosterone antagonists on the substrate for atrial fibrillation: aldosterone promotes oxidative stress and atrial structural/electrical remodeling," *International Journal of Cardiology*, vol. 168, no. 6, pp. 5135–5142, 2013.
- [53] W.-w. Wang, F.-l. Zhang, J.-h. Chen et al., "Telmisartan reduces atrial arrhythmia susceptibility through the regulation of RAS-ERK and PI3K-Akt-eNOS pathways in spontaneously

- hypertensive rats,” *Canadian Journal of Physiology and Pharmacology*, vol. 93, no. 8, pp. 657–665, 2015.
- [54] H. Y. Zhao, S. D. Zhang, K. Zhang et al., “Effect of Shensong Yangxin on the progression of paroxysmal atrial fibrillation is correlated with regulation of autonomic nerve activity,” *Chinese Medical Journal*, vol. 130, no. 2, pp. 171–178, 2017.
- [55] L. Sun, S. Yan, X. Wang et al., “Metoprolol prevents chronic obstructive sleep apnea-induced atrial fibrillation by inhibiting structural, sympathetic nervous and metabolic remodeling of the atria,” *Scientific Reports*, vol. 7, no. 1, p. 14941, 2017.
- [56] N. Karimi, M. Kelava, P. Kothari, N. M. Zimmerman, A. M. Gillinov, and A. E. Duncan, “Patients at high risk for obstructive sleep apnea are at increased risk for atrial fibrillation after cardiac surgery,” *Anesthesia & Analgesia*, vol. 126, no. 6, pp. 2025–2031, 2018.
- [57] S. L. Bober, J. Ciriello, and D. L. Jones, “Atrial arrhythmias and autonomic dysfunction in rats exposed to chronic intermittent hypoxia,” *American Journal of Physiology-Heart and Circulatory Physiology*, vol. 314, no. 6, pp. H1160–h1168, 2018.