

Correction to Optimized Inhibitors of Soluble Epoxide Hydrolase Improve in Vitro Target Residence Time and in Vivo Efficacy

Kin Sing Stephen Lee, Jun-Yan Liu, Karen M. Wagner, Svetlana Pakhomova, Hua Dong, Christophe Morisseau, Samuel H. Fu, Jun Yang, Peng Wang, Arzu Ulu, Christina A. Mate, Long V. Nguyen, Sung Hee Hwang, Matthew L. Edin, Alexandria A. Mara, Heike Wulff, Marcia E. Newcomer, Darryl C. Zeldin, and Bruce D. Hammock*

Journal of Medicinal Chemistry 2014, 57, 7016–7030. DOI: 10.1021/jm500694p

Supporting Information, Page 13. In the legend within Figure S11, the yellowish green line with solid triangle (▼) should be inhibitor 21 instead of inhibitor 19, while green line with open triangle (△) should be inhibitor 19 instead of inhibitor 21. The corresponding structures should be swapped too. The correct Figure S11 is shown here.

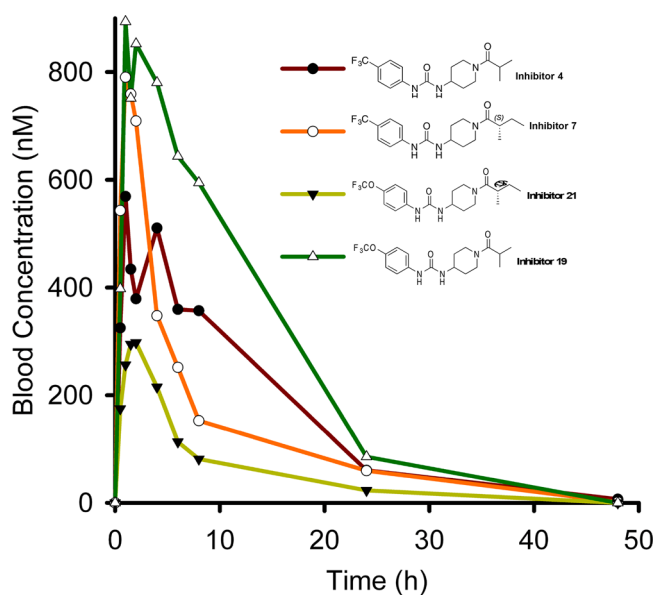


Figure S11. Pharmacokinetic profile of sEH inhibitors in rat. Rats ($n = 4$) were treated by oral dosing with a cassette of 4 compounds (0.3 mg/kg of each compounds dissolved in 20% PEG400 in oleic acid rich triglycerides). The graphics and statistics were prepared by SigmaPlot (SysTat Software, San Jose, CA). The pharmacokinetic profiles of the inhibitors were calculated by Winonlin based on the best fit model of one compartmental analysis.