


RESEARCH

Open Access



# Efficacy of direct current generated by multiple-electrode arrays on F3II mammary carcinoma: experiment and mathematical modeling

Narciso Antonio Villar Goris<sup>1,2,3</sup>, Jorge Luis García Rodríguez<sup>3</sup>, Maraelys Morales González<sup>4</sup>, Beatriz Olivares Borges<sup>5</sup>, Dasha Fuentes Morales<sup>6</sup>, Enaide Maine Calzado<sup>7</sup>, Antonio Rafael Selva Castañeda<sup>7</sup>, Leonardo Mesa Torres<sup>3</sup>, Juan Ignacio Montijano<sup>8</sup>, Victoriano Gustavo Sierra González<sup>9</sup>, Daniel Jay Pérez<sup>6</sup>, Oscar Ortiz Posada<sup>6</sup>, Janet Avellanet Martínez<sup>10</sup>, Arlem García Delgado<sup>10</sup>, Karina García Martínez<sup>10</sup>, Mayrel Labrada Mon<sup>10</sup>, Kalet León Monzón<sup>10</sup>, Héctor Manuel Camué Ciria<sup>3</sup> and Luis Enrique Bergues Cabrales<sup>3\*</sup> 

## Abstract

**Background:** The modified Gompertz equation has been proposed to fit experimental data for direct current treated tumors when multiple-straight needle electrodes are individually inserted into the base perpendicular to the tumor long axis. The aim of this work is to evaluate the efficacy of direct current generated by multiple-electrode arrays on F3II mammary carcinoma that grow in the male and female BALB/c/Cenp mice, when multiple-straight needle electrodes and multiple-pairs of electrodes are inserted in the tumor.

**Methods:** A longitudinal and retrospective preclinical study was carried out. Male and female BALB/c/Cenp mice, the modified Gompertz equation, intensities (2, 6 and 10 mA) and exposure times (10 and 20 min) of direct current, and three geometries of multiple-electrodes (one formed by collinear electrodes and two by pair-electrodes) were used. Tumor volume and mice weight were measured. In addition, the mean tumor doubling time, tumor regression percentage, tumor growth delay, direct current overall effectiveness and mice survival were calculated.

**Results:** The greatest growth retardation, mean doubling time, regression percentage and growth delay of the primary F3II mammary carcinoma in male and female mice were observed when the geometry of multiple-pairs of electrodes was arranged in the tumor at 45, 135, 225 and 325° and the longest exposure time. In addition, highest direct current overall effectiveness (above 66%) was observed for this EChT scheme.

**Conclusions:** It is concluded that electrochemical therapy may be potentially addressed to highly aggressive and metastatic primary F3II murine mammary carcinoma and the modified Gompertz equation may be used to fit data of this direct current treated carcinoma. Additionally, electrochemical therapy effectiveness depends on the exposure

\*Correspondence: berguesc@yahoo.com

<sup>3</sup> Departamento de Investigación e Innovación, Centro Nacional de Electromagnetismo Aplicado, Dirección de Ciencia e Innovación, Universidad de Oriente, Ave. Las Américas s/n, Santiago de Cuba 90400, Cuba

Full list of author information is available at the end of the article



© The Author(s) 2020. This article is licensed under a Creative Commons Attribution 4.0 International License, which permits use, sharing, adaptation, distribution and reproduction in any medium or format, as long as you give appropriate credit to the original author(s) and the source, provide a link to the Creative Commons licence, and indicate if changes were made. The images or other third party material in this article are included in the article's Creative Commons licence, unless indicated otherwise in a credit line to the material. If material is not included in the article's Creative Commons licence and your intended use is not permitted by statutory regulation or exceeds the permitted use, you will need to obtain permission directly from the copyright holder. To view a copy of this licence, visit <http://creativecommons.org/licenses/by/4.0/>. The Creative Commons Public Domain Dedication waiver (<http://creativecommons.org/publicdomain/zero/1.0/>) applies to the data made available in this article, unless otherwise stated in a credit line to the data.

time, geometry of multiple-electrodes and ratio between the direct current intensity applied and the polarization current induced in the tumor.

**Keywords:** Modified Gompertz equation, Tumor growth kinetics, Highly aggressive and metastatic primary F3II mammary carcinoma, Electrochemical therapy, Array of multiple-electrodes

## Highlights

- Multiple-pairs of electrodes are experimentally verified for the first time in the literature.
- Different geometries of multiple-electrodes and long exposure time can be addressed for electrochemical therapy.
- Modified Gompertz equation can be applied to any geometry of multiple-electrodes.
- Exposure time and electrode array geometries are included in the parameters of modified Gompertz equation.

## Background

Antitumor effectiveness of the electrochemical therapy (EChT) with low-level direct current (DC) is demonstrated in *in vitro* [1], preclinical [2] and clinical [3] studies. Nevertheless, it is poorly understood how tumor growth kinetics (TGK) is affected by DC application.

The modified Gompertz equation (MGE) to simulate and fit the different responses of experimental tumors after DC application is suggested by Cabrales et al. [4], such as: disease progression (DP), stable disease (SD), partial response (PR) and complete response (CR). The data of Ehrlich and fibrosarcoma Sa-37 primary tumors [3] and highly aggressive and metastatic primary F3II mammary carcinoma [5] are adequately fitted with this equation. This validation of MGE is carried out for different values of DC intensity ( $i$ ) and time of exposure of it ( $t_{\text{exp}}$ ), fixing the same electrode array geometry. Additionally, the stationary partial response [4], other findings [6] and how space–time distribution of the tumor density changes for each tumor response post-treatment [7] is revealed from the simulation of MGE. These theoretical and experimental results are valid when two or more collinear electrodes with alternating polarities inserted perpendicular to the larger diameter of the tumor are used.

In EChT, an important and interesting issue is to search electrode array geometries that maximizes the tumor volume with minimum damage to the organism. For this, multiple-straight needle electrodes inserted individually in the tumor (MSNEII) are recommended for EChT: MSNEII inserted colineally along the major axis of the tumor (MSNEII<sub>c</sub>) [2, 3, 5, 6] or MSNEII inserted

non-colineally anywhere of the tumor (MSNEII<sub>nc</sub>) [8]. MSNEII<sub>c</sub> is the most used in preclinical [5] and clinical studies [3]; nevertheless, they have not given a definitive solution to the cancer cure. Therefore, efforts are addressed to propose new MSNEII<sub>nc</sub>.

The use of multiple-pairs of electrodes (MPE) for EChT treated tumors is suggested by Calzado et al. [9]. High tumor damage percentages with the minimum damage to the organism are theoretically revealed for simulations of MSNEII<sub>nc</sub> [8] and MPE [9], being noticeable for MPE. Nevertheless, the antitumor effectiveness and effects in the organism generated by these non-colinear electrode arrays are not reported in the literature. Additionally, we are not aware of the use of MGE to fit TGK treated with these multiple-electrode arrays. Therefore, the aim of this work is to evaluate the efficacy of direct current generated by multiple-electrode arrays on F3II mammary carcinoma that grow in the male and female BALB/c/Cenp mice, when collinear MSNEII<sub>c</sub> and MPE are inserted in the tumor.

## Methods

### Experiment

A longitudinal and retrospective preclinical study was carried out between September–November 2017. The sarcomatoid mammary carcinoma cell line F3II that grow in BALB/c/Cenp mice was provided by the Centro de Inmunología Molecular (La Habana, Cuba). The characteristics of F3II mammary carcinoma were reported in [5, 10].

Stock F3II cells were conserved in minimal essential medium (MEM 41500, Gibco-BRL, Grand Island, NY) supplemented with 10% fetal bovine serum (Merck KGaA, Darmstadt, Germany), 2 mM glutamine (Merck KGaA, Darmstadt, Germany), 80 mg/ml Gentamycin (Merck KGaA, Darmstadt, Germany), and 20 mg/ml tetracycline (Merck KGaA, Darmstadt, Germany) in monolayer culture. For harvesting, cells were trypsinized using standard procedures. The cell viability was quantified by Trypan blue dye exclusion test (Merck KGaA, Darmstadt, Germany) and over 95%. Cell count was carried out under a microscope (model CX31, Olympus, Tokyo, Japan).

One hundred and sixty BALB/c/Cenp male and female mice (80 males and 80 females), 6–7 week old and 18–20 g weight were initially used. These mice were

supplied by the Centro Nacional para la Producción de Animales de Laboratorio (CENPALAB, La Habana, Cuba). The experiment was conducted under a protocol approved by the Institutional Animal Care and Use Committee of CENPALAB (Registration number 16/17, code AETM0917, 17 May 2017), guidelines Animal Ethic Commission of República de Cuba and Council Directive 86/609/ECC of 24 November 1986, which followed guidelines for the welfare of animals in experimental neoplasia [11]. Each mouse was identified by dyeing with picric acid. Following the inoculation of tumor cells in the BALB/c/Cenp mice, daily meticulous clinical observations (including cage-side and handheld observations) were conducted throughout the study on all mice to monitor their general health states. Additionally, these observations were made to determine if significant clinical abnormalities or death were present in mice from any of the experimental groups.

$2 \times 10^5$  F3II sarcomatoid mammary carcinoma cells in 0.2 ml of 0.9% NaCl (sodium chloride) in the right dorsolateral region were inoculated in all mice. NaCl was supplied by the Laboratorios Biológicos Farmacéuticos (LABIOFAM, La Habana, Cuba). The latency time of local F3II tumor was monitored by palpation, which was done three times per week. The major and minor tumor diameters, in millimeters (mm), were measured with a venier caliper (Model 530-104, Mitutoyo, Tokyo, Japan) twice a week in order to record the evolution of each syngenic F3II tumor without sacrificing any animal. The volume of each individual tumor was computed by means of the formula  $V = \pi ab^2/6$ , in which  $a$  was the major diameter of this tumor histological variety and  $b$  its minor diameter.

Mice were housed in clear standard polycarbonate cages (1264C, TECNIPLAST, Varese, Italy) of  $206 \text{ mm}^2 \times 12 \text{ cm}$  (5 animals/cage) with autoclaved hard wood-shavings as bedding. They were maintained under automatically controlled environmental conditions (NODOREM<sup>®</sup>, Instituto Cubano de Investigaciones Digitales, La Habana, Cuba): temperature of  $22 \pm 2 \text{ }^\circ\text{C}$ , 60–80% relative humidity, 12-h light/dark (light 7:00–19:00) and a room air exchange of 12–18 times/h. Animals were provided Certified Rodent Diet EMO1004 (ALYCO<sup>®</sup>, CENPALAB, La Habana, Cuba) in granulated form. Feed and water were sterilized by autoclaving (HS66, GETINGE, Gothenburg, Sweden) and available ad libitum. Autoclaving was made at  $120 \text{ }^\circ\text{C}$  for 60 min for water and at  $120 \text{ }^\circ\text{C}$  for 20 min for feed and bedding. Animals bedding were daily changed.

Body weight of each mouse was determined with a precision balance (Cubis<sup>®</sup> MSU, Sartorius, Goettingen, Germany) prior to inoculation of cells and then weekly. Furthermore, survival checks for morbidity and mortality

were made twice per day. Any animal found dead or moribund was subjected to gross necropsy.

One configuration of MSNEII<sub>c</sub> and two of MPE were chosen from the simulations reported by Calzado et al. [9]. MSNEII<sub>c</sub> was formed by four collinear electrodes with alternating polarities inserted perpendicularly along the largest diameter of the tumor, named C-I. For C-I, electrodes 1 and 3 were positives whereas electrodes 2 and 4 negatives (Fig. 1a).

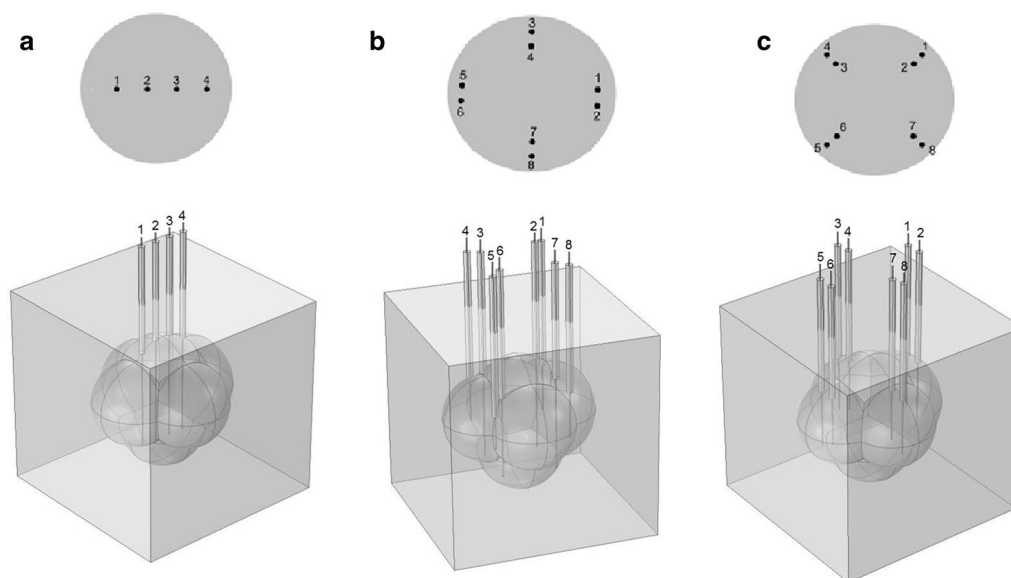
The two configurations of MPE were formed by four electrode pairs inserted into the tumor. The first configuration of MPE, named C-II, was formed by electrode pairs arranged to  $45^\circ$  (electrode pair 1–2),  $135^\circ$  (electrode pair 3–4),  $225^\circ$  (electrode pair 5–6) and  $325^\circ$  (electrode pair 7–8), as shown in Fig. 1b. For C-II, electrodes 1, 4, 5 and 8 were positives whereas electrodes 2, 3, 6 and 7 negatives. The second configuration of MPE, named C-III, was formed by electrode pairs arranged to  $0^\circ$  (electrode pair 1–2),  $90^\circ$  (electrode pair 3–4),  $180^\circ$  (electrode pair 5–6) and  $270^\circ$  (electrode pair 7–8), as shown in Fig. 1c. For C-III, electrodes 2, 3, 5 and 8 were positives whereas electrodes 1, 4, 6 and 7 negatives.

For each pair of electrodes in each configuration of MPE, its angle was measured with respect to the largest tumor diameter counterclockwise. It was theoretically reported that the highest percentage of tumor damage was induced by C-II [9]. Therefore, C-II was the most used in this study.

The distance between electrodes was fixed at 0.5 cm for C-I, C-II and C-III. The AISI 316L austenitic stainless steel was chosen as electrode material for DC treatment (see details in [5]). The diameter of each electrode was 0.7 mm and its length 68.5 mm.

After all electrodes were inserted, they were connected to the DC source. The ONCOCED<sup>®</sup> B&E-01 device was used for EChT, which was applied when the initial volume of the tumors ( $V_0$ ) was approximately  $0.5 \text{ cm}^3$  (zero day). This tumor size was reached 31 days after their cells were inoculated in mice. DC intensity and voltage were continuously monitored during EChT application.

Once tumor cells were inoculated into mice, animals were randomly divided into eight experimental groups: a first control group, in which C-I was used but DC was not applied (CG1); a second control group, in which C-II was used but DC was not applied (CG2); a first group treated with 2 mA for 10 min and C-I (TG1); a second group treated with 6 mA for 20 min and C-II (TG2); a third group treated with 2 mA for 10 min and C-III (TG3); a fourth group treated with 2 mA for 10 min and C-II (TG4); a fifth group treated with 6 mA for 10 min and C-II (TG5) and a sixth group treated with 10 mA for 10 min and C-II (TG6). These groups for females were defined CG1-F, CG2-F, TG1-F, TG2-F, TG3-F, TG4-F,



**Fig. 1** Schematic representation of different multiple-electrodes arrays inserted in a solid tumor. **a** Four collinear electrodes with alternating polarities inserted perpendicularly along the largest diameter of the tumor. Electrodes 1 and 3 (positive) and 2 and 4 (negative) were identified (C-I). **b** Four electrode pairs were arranged in the tumor to 45° (electrode pair 1–2), 135° (electrode pair 3–4), 225° (electrode pair 5–6) and 325° (electrode pair 7–8). Electrodes 1, 4, 5 and 8 were positives whereas electrodes 2, 3, 6 and 7 negatives (C-II). **c** Four electrode pairs were arranged in the tumor to 0° (electrode pair 1–2), 90° (electrode pair 3–4), 180° (electrode pair 5–6) and 270° (electrode pair 7–8). Electrodes 2, 3, 5 and 8 were positives whereas electrodes 1, 4, 6 and 7 negatives (C-III). Furthermore, the direction of insertion depth along the z-direction and the central plane represented by  $z=0$  were shown for each geometry of electrode array

TG5-F and TG6-F whereas CG1-M, CG2-M, TG1-M, TG2-M, TG3-M, TG4-M, TG5-M and TG6-M for the males.

Each experimental group was initially formed by 10 females and 10 males. The reduction (one of the criteria of the 3R [12, 13]) was taken into account to establish the number of animals, by experimental group.

Anesthesia before inserting the electrodes into the tumor was administered to mice. Anesthesia consisted of a mixture of 2.5 ml of Ketamine (Liorad, La Habana, Cuba), 1 ml of Atropine (LABIOFAM, La Habana, Cuba) and 2 ml of Diazepam (Empresa Laboratorios AICA del Grupo de las Industrias Biotecnológica y Farmacéutica, La Habana, Cuba). This mixture was administered intraperitoneally (0.1 ml per 20 g of weight). The injection area was disinfected with 70% ethanol (Ministerio de Salud Pública, La Habana, Cuba), before and after administering anesthesia. All animals were placed in an isothermal blanket at 37 °C for recovery from anesthesia.

Control and treated groups were maintained under the same experimental conditions. Electrodes were inserted in all mice; nevertheless, the mice in the control groups did not receive DC. All mice were located on an isothermal blanket at 37 °C for recovery from anesthesia. Daily evaluations of the clinical signs and symptoms, morbidity and mortality of each animal were made until

the moment of euthanasia. Mice were bled by the femoral vein, prior to anesthesia with diethyl ether (Merck, Darmstadt, Germany). After, these animals were sacrificed by cervical dislocation. Euthanasia of these mice was governed by the Standard Operating Procedure established in the CENPALAB (Edition 2003–2018).

Three kinetic parameters for each individual F3II mammary carcinoma were calculated, such as: regression percent (in %), mean doubling time (in days) and growth delay (in days). The first parameter was calculated by  $[(V_{\min} - V_0) / V_0] 100\%$ , where  $V_{\min}$  was interpreted as the minimum tumor volume reached after DC application. The second parameter was defined as the time required for that this tumor type reaches a twofold increase of its initial volume. The third parameter was calculated by means of the ratio between mean doubling time of treated group and mean doubling time of its corresponding control group.

The individual tumor response after DC treatment (DP, SD, PR o CR) was documented in this study. Additionally, overall EChT effectiveness (PR + CR) was reported, as suggested González et al. [5].

#### Modified Gompertz equation

The analysis of the entire TGK in the same mice and in two parts was suggested by González et al. [5]: the first part

comprised from the moment of inoculation of the tumor cells in the host until the day that DC was applied, called TGK<sub>1</sub>. The second part included from the moment of DC application until the day of sacrifice of the mice for ethical reasons [11], called TGK<sub>2</sub>. This individual analysis of the TGK was done for each male and female. For this, MGE (Eq. 1) was used to fit experimental data for individual F3II mammary carcinoma treated with C-I, C-II and C-III and given by

$$V^*(t) = V_o e^{\left(\frac{\alpha^*}{\beta}\right)(1-e^{-\beta t})}, \tag{1}$$

where

$$\alpha^* = [a_1 (1 - e^{-\gamma t}) + a_2] \alpha,$$

with

$$a_1 = \left(\frac{i}{i_o}\right) \left(2 - \frac{i}{i_o}\right),$$

and

$$a_2 = \left(1 - \frac{i}{i_o}\right),$$

where  $V^*(t)$ ,  $\alpha$ ,  $\beta$ ,  $\alpha^*$ ,  $i$ ,  $i_o$  and  $\gamma$  were used to denote the tumor volume at time  $t$  after DC treatment, the intrinsic growth rate of the tumor, the growth deceleration factor related to the endogenous antiangiogenesis processes, the modified tumor growth rate due to EChT application, the DC intensity, the polarization current and the first-order exponential decay rate of the net effect induced in the solid tumor after the DC was removed, respectively. Dimensionless parameters  $a_1$  and  $a_2$  depended on the ( $i/i_o$ ) ratio [4–6, 14].

**Interpolation of experimental data**

Hermite interpolation was used to interpolate volume data for the individual F3II mammary carcinoma in each experimental group. It was advised to know the values of  $\alpha$ ,  $\beta$ ,  $\gamma$  and  $i_o$  of this equation, as suggested in [5]. This was suggested because the data used were not enough for their fitting with Eq. (1).

**Criteria for model assessment**

Values and their estimation accuracies of  $\alpha$ ,  $\beta$ ,  $\gamma$  and  $i_o$  for the MGE were computed for each mouse by means of following criteria for model assessment [4–6, 14]

$$D_{\max} = \max|F_i - G_i|,$$

$$RMSE = \sqrt{\sum_{i=1}^M \frac{(F_i - G_i)^2}{M}},$$

$$SSE = \sum_{j=1}^{n_1} (\hat{V}_j^* - V_j^*)^2,$$

$$SE = \sqrt{\frac{\sum_{j=1}^{n_1} (\hat{V}_j^* - V_j^*)^2}{n_1 - k}},$$

$$r_a^2 = 1 - \frac{n_1 - 1}{n_1 - k} (1 - r^2) = \frac{(n_1 - 1) r^2 - k + 1}{n_1 - k},$$

$$PRESS = \frac{\sum_{j=1}^{n_1-1} \left[ (\hat{V}_j^*)' - V_j^* \right]^2}{n_1 - k},$$

$$MPRESS(m) = \frac{\sum_{j=m+1}^{n_1} \left[ (\hat{V}_j^*)' - V_j^* \right]^2}{n_1 - m},$$

$$1 - r^2 = \frac{\sum_{j=1}^{n_1} (\hat{V}_j^* - V_j^*)^2}{\sum_{j=1}^{n_1} (V_j^*)^2 - \frac{1}{n_1} \left( \sum_{j=1}^{n_1} V_j^* \right)^2},$$

where  $D_{\max}$ , RMSE, SSE, SE,  $r^2$ ,  $r_a^2$ , PRESS and MPRESS were used to denote the maximum distance, Root Means Square Error, sum of squares of errors, standard error of the estimate, goodness-of-fit, adjusted goodness-of-fit coefficient of multiple determination, predicted residual error sum of squares and multiple predicted residual sum error of squares, respectively. SSE, SE,  $r^2$ ,  $r_a^2$ , PRESS and MPRESS were chosen as fitting quality criteria. Least Sum of Squares of Errors was obtained when SSE was minimized in the Marquardt–Levenberg optimization algorithm.

RMSE and  $D_{\max}$  were used to know how different the average TGK of each treated group respect its respective control group. In expressions of  $D_{\max}$  and RMSE,  $M$ ,  $F_i$  and  $G_i$  were defined as the number of interpolated data of tumor kinetics [tumor volume versus time plot], the  $i$ -th tumor volume of the control group that was chosen as the reference and the  $i$ -th tumor volume of the treated group to be compared with the reference group, respectively. Nevertheless, in the expressions of SSE, SE,  $r^2$ ,  $r_a^2$ , PRESS and MPRESS,  $V_j^*$  was defined as the  $j$ -th measured tumor volume at discrete time  $t_j$ ,  $j = 1, 2, \dots, n_1$ .  $\hat{V}_j^*$  was denoted as the  $j$ -th estimated tumor volume by



MGE.  $n_1$  was the number of experimental points ( $n_1 = 11$ ). The number of parameters was symbolized by  $k$ . The fitting was considered to be satisfactory when  $r_a^2 > 0.98$ . A better fit was meant higher  $r_a^2$ .  $(V_j^*)'$  was designated as the estimated value of  $V_j^*$  when MGE was obtained without the  $j$ -th observation. MPRESS removed the last  $n_1 - m$  measurements. The model was fitted to the first  $m$  measured experimental points ( $m = 3, 4$  or  $5$ ) and then from calculated model parameters the error between tumor volume estimated and measured values in the remaining  $n_1 - m$  points was calculated [4–6, 14].

The analysis of the TGK in each experimental group was done following the same procedure reported in [5]. Fitting the full TGK (18–49 days post-inoculation) was performed for CG1-E, CG2-E, CG1-M and CG2-M. For this, each time instant belonging to this range of days was subtracted 18 days so that the Eq. (1) satisfied  $V^*(t=0) = V_o$  (initial condition for  $V^*(t)$ ). In this case,  $V_o$  was the individual F3II mammary carcinoma volume reached at 18 days in each animal of CG1-E, CG2-E, CG1-M and CG2-M. The tumor volume of  $0.5 \text{ cm}^3$  was approximately observed at 31 days post-inoculation ( $t=0$  for therapy), time in which DC was applied. The analysis per section of TGK was done in two parts (TGK<sub>1</sub> and TGK<sub>2</sub>) for each animal and gender in all experimental groups. TGK<sub>1</sub> and TGK<sub>2</sub> comprised the time intervals from 18 to 31 and 31 to 49 days post-inoculation, respectively. Each time instant in TGK<sub>1</sub> was subtracted 18 days whereas in TGK<sub>2</sub> 31 days to fit each one of these two parts. This guaranteed that the MGE fulfilled  $V^*(t=0) = V_o$ , where  $V_o$  was the individual F3II mammary carcinoma volume reached at 18 and 31 days post-inoculation for TGK<sub>1</sub> and TGK<sub>2</sub>, respectively. Once TGK<sub>1</sub> was fitted for each individual tumor, the values of  $\alpha$  and  $\beta$  were introduced into the MGE to fit TGK<sub>2</sub>, taking into account that the Eq. (1) corresponded with the unperturbed Gompertz equation (DC intensity was equal to zero). This procedure permitted the analysis of the TGK to be conducted in the same mouse before and after EChT application, as suggested in [5].

### Statistical criteria

The random distribution of mice by experimental group was done with the software of random numbers LAB-TOOLS version 2.0, 1996 (Centro de Investigaciones y Evaluaciones Biológicas, Instituto de Farmacia y Alimentos, La Habana, Cuba). Additionally, statistical analyses were carried out using Minitab 14 statistical software (Minitab for Windows, 2003, free software, National Institute of Standards and Technology, State University of Pennsylvania, USA, <https://www.minitab.com/es-mx/products/minitabs>) for a confidence of 95%. Kolmogorov–Smirnov test was used to determine the normal

distribution of parameters. Levene's test was used to know the homogeneity of variance. Kruskal–Wallis test and two-tailed Mann–Whitney test were applied to compare body mass and tumor volumes between the experimental groups, respectively. Logrank test was used for survival analysis, using free professional software GraphPad Prism (version 5.00, GraphPad Software, San Diego, CA). Both professional software programs worked on a PC (Intel Core i3 processor at 3.3 GHz) located at CENPALAB.

In order to fit each mouse growth curve Eq. (1) was used. A computer program was implemented in the Matlab software (version R2012b 64-bit, University Institute for Research in Mathematics and Applications, University of Zaragoza, Zaragoza, Spain) to calculate the tumor volume. In addition, the mean  $\pm$  mean standard error of the parameters  $\alpha$ ,  $\beta$ ,  $\gamma$ ,  $i_0$ , SSE, SE,  $r_a^2$ , PRESS, MPRESS, RMSE and  $D_{\max}$  were calculated from their individual values. In addition, the estimation errors of the parameters  $\alpha$ ,  $\beta$ ,  $\gamma$  and  $i_0$ , named  $e_\alpha$ ,  $e_\beta$ ,  $e_\gamma$  and  $e_{i_0}$ , respectively was computed. Mean standard error was calculated as (standard deviation)/ $\sqrt{N}$ , where  $N$  was the total number of determinations. These calculations were performed on a PC with an Intel(R) core processor™ i7-3770 at 3.40 GHz with a Windows 10 operating system. All calculations took approximately 10 min. In this study, mm were converted to cm (centimeters).

## Results

### Experimental results

Before the inoculation of tumoral cells, it were computed the average  $\pm$  mean standard error of the weight of 80 males ( $22.72 \pm 1.03 \text{ g}$ ) and 80 females ( $21.27 \pm 1.22 \text{ g}$ ). For 80 female mice were estimated the average  $\pm$  mean standard error of the latency time of the F3II mammary carcinoma:  $15.4 \pm 3.3$  days for CG1,  $13.2 \pm 2.2$  days for CG2,  $12.0 \pm 2.1$  days for TG1,  $11.6 \pm 3.6$  days for TG2,  $13.2 \pm 3.2$  days for TG3,  $12.6 \pm 4.1$  days for TG4,  $14.0 \pm 3.8$  days for TG5 and  $15.0 \pm 4.8$  days for TG6, respectively. For 80 male mice were calculated the average  $\pm$  mean standard error of the latency time of the F3II mammary carcinoma:  $11.8 \pm 4.2$  days for CG1,  $12.3 \pm 3.0$  days for CG2,  $11.0 \pm 2.0$  days for TG1,  $12.0 \pm 1.1$  days for TG2,  $11.5 \pm 2.0$  days for TG3,  $12.8 \pm 4.5$  days for TG4,  $12.2 \pm 3.9$  days for TG5 and  $11.0 \pm 4.4$  days for TG6, respectively. Statistically significant differences were not observed between the F3II tumor latency time when experimental groups were compared, according to one tail Mann–Whitney U test ( $p > 0.05$ ). It was observed that 100% of mice carried a tumor at the time of the DC application.

It was observed that 24.40% (39/160) of all mice died before DC application (31 days after the inoculation): 28.80% (23/80) for females and 20.00 (16/80)

for males. These deaths were explained by three main reasons. Firstly, multiple metastatic nodules in lungs (19.38% = 31/160) were observed in CG1-F (3), CG1-M (4), CG2-F (3), CG2-M (4), TG2-F (2), TG3-F (4), TG4-F (1), TG5-F (4), TG5-M (1), TG6-F (3) and TG6-M (2). This finding was confirmed in the histological study of organs. Secondly, animal deaths (2.50% = 4/160) in TG2-F (2), TG2-M (1) and TG4-F (1) were seen after anesthesia administration. Thirdly, euthanasia (2.50% = 4/160) was carried out in mice of TG2-M (2) and TG6-M (2) due to very large tumors (tumor volumes  $\geq 2 \text{ cm}^3$ ).

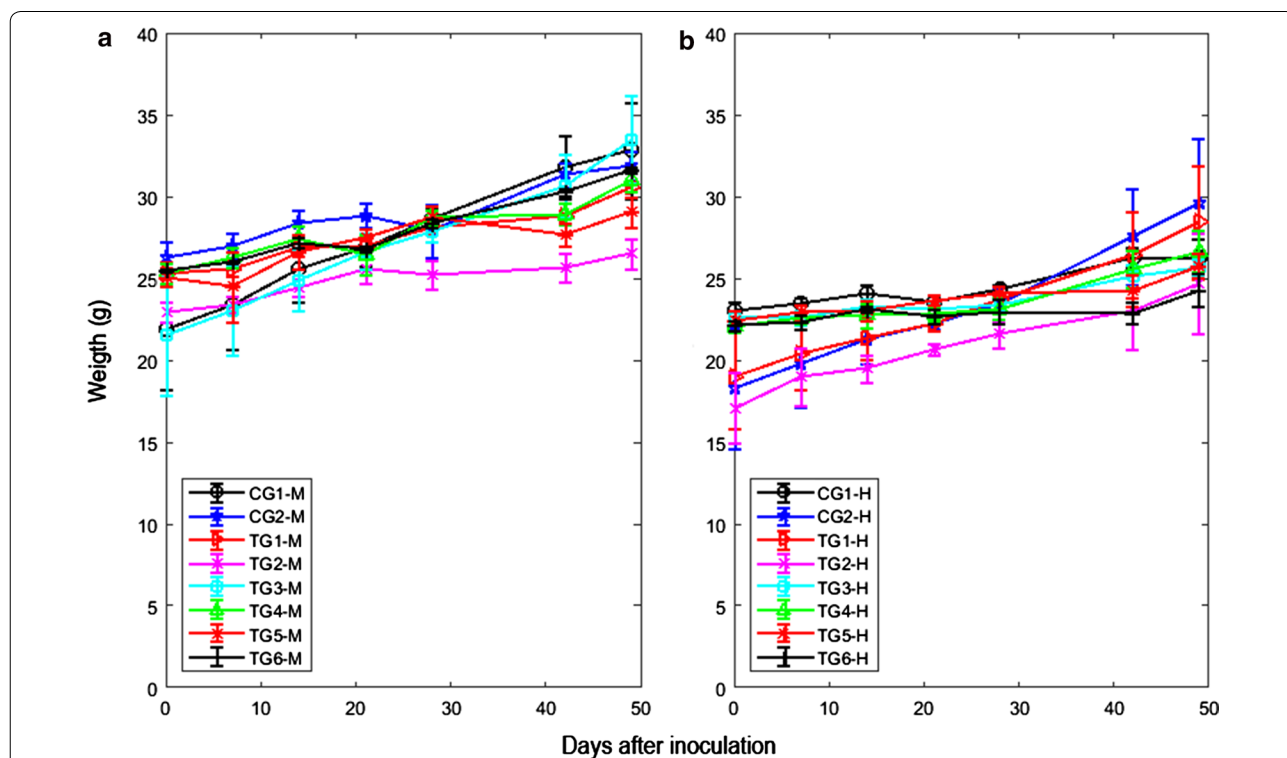
It was calculated the average  $\pm$  mean standard error of the mice weight for 64 males ( $25.59 \pm 1.05 \text{ g}$ ) and 57 females ( $23.31 \pm 1.06 \text{ g}$ ) before DC application. The weight of male mice was significantly higher than that female mice (Fig. 2). Except for TG2 in both genders, statistically significant differences between weights of male and female mice, in each experimental group, were not observed ( $p > 0.05$ ). In this group, from the beginning of the experiment, the weight was significantly lower, with regard to the rest of the experimental groups ( $p = 0.0012$ ), according to the statistical evaluation for ANOVA test (Fig. 2).

It was reported that 13.48% (19/141) of mice died after EChT application. These deaths were observed in 84.21%

(16/19) of mice (six females and 10 males) at the first 72 h after DC application and 15.79% (3/19) after 72 h post-treatment (two females and one male). All these deaths were confirmed by histological study of organs.

At the first 72 h after DC application, deaths were observed in six mice of control groups (two of CG1-F, one of CG1-M, two of CG2-F and one of CG2-M) and five mice of DC treated groups (one of TG2-M, one of TG3-M, one of TG4-F, one of TG5-M and one of TG6-F) due to multiple metastatic nodules in lungs. Other five mice deaths were documented by alterations in their organs: heart damage (mechanical rupture by insertion of electrodes pair) was observed in one mouse of TG5-M, liver damage was seen in one mouse of TG2-M and damages in both liver and kidney organs were perceived in one mouse of TG3-M and two mice of TG4-M. Additionally, deaths by lung metastasis (one mouse of TG3-F and one mouse of TG5-F) and damages in both liver and kidney organs (one mouse of TG6-M) were reported 72 h post-treatment.

As a result of deaths mentioned-above, all experimental results for 76.250% (122/160) of mice were reported in this study: 66.25% (53/80) of males and 61.25% (49/80) of females. The gain of corporal weight of mice BALB/c/Cenp was shown in Table 1 for days 7, 14, 21, 28, 42 and



**Fig. 2** Mean  $\pm$  mean standard error of corporal weight of the mice BALB/c/Cenp versus days post-inoculation of the tumoral cells F3II. **a** Males. **b** Females. The legends of the experimental groups were defined in Methods

**Table 1 Mean  $\pm$  mean standard error of the body weight gain of mice after direct current application by group experimental and gender**

Groups	G	Gain of corporal weight (in g)					
		7	14	21	28	42	49
CG1	M (N=5)	0.62 $\pm$ 0.29	1.96 $\pm$ 0.36	2.38 $\pm$ 0.20	3.22 $\pm$ 0.43	4.58 $\pm$ 0.88	4.60 $\pm$ 1.22
	F (N=5)	0.42 $\pm$ 0.18	1.07 $\pm$ 0.59	0.59 $\pm$ 0.50	1.34 $\pm$ 0.47	3.30 $\pm$ 1.03	3.30 $\pm$ 1.55
CG2	M (N=5)	0.72 $\pm$ 0.55	2.10 $\pm$ 0.80	2.56 $\pm$ 0.64	1.63 $\pm$ 1.70	5.04 $\pm$ 0.43	5.60 $\pm$ 0.94
	F (N=5)	0.38 $\pm$ 0.24	0.80 $\pm$ 0.49	0.60 $\pm$ 0.38	0.64 $\pm$ 0.22	2.75 $\pm$ 0.72	3.84 $\pm$ 0.88
TG1	M (N=10)	0.30 $\pm$ 0.51	1.62 $\pm$ 0.42	1.64 $\pm$ 0.43	2.78 $\pm$ 0.57	3.50 $\pm$ 0.74	5.29 $\pm$ 0.54
	F (N=10)	0.55 $\pm$ 0.19	0.44 $\pm$ 0.36	0.44 $\pm$ 0.36	0.93 $\pm$ 0.20	1.72 $\pm$ 0.52	2.88 $\pm$ 0.34
TG2	M (N=5)	0.45 $\pm$ 0.43	1.46 $\pm$ 0.53	2.66 $\pm$ 0.65	2.24 $\pm$ 0.77	2.67 $\pm$ 0.44	3.53 $\pm$ 0.45
	F (N=6)	1.29 $\pm$ 0.16	0.95 $\pm$ 0.12	1.40 $\pm$ 0.17	1.57 $\pm$ 0.20	1.47 $\pm$ 0.18	2.47 $\pm$ 0.31
TG3	M (N=8)	0.61 $\pm$ 0.47	1.64 $\pm$ 0.14	2.52 $\pm$ 0.77	2.75 $\pm$ 0.25	3.65 $\pm$ 0.46	5.83 $\pm$ 0.46
	F (N=5)	-0.07 $\pm$ 0.42	0.60 $\pm$ 0.35	0.47 $\pm$ 0.34	0.75 $\pm$ 0.43	2.53 $\pm$ 0.43	3.05 $\pm$ 0.34
TG4	M (N=8)	0.99 $\pm$ 0.13	2.12 $\pm$ 0.40	1.12 $\pm$ 1.15	3.43 $\pm$ 0.53	3.62 $\pm$ 0.77	5.70 $\pm$ 0.86
	F (N=7)	0.49 $\pm$ 0.15	0.66 $\pm$ 0.48	0.75 $\pm$ 0.16	1.05 $\pm$ 0.37	3.50 $\pm$ 0.93	4.59 $\pm$ 1.09
TG5	M (N=7)	-0.59 $\pm$ 1.82	1.54 $\pm$ 0.63	2.41 $\pm$ 0.32	3.68 $\pm$ 0.43	2.60 $\pm$ 0.46	3.97 $\pm$ 0.41
	F (N=5)	0.50 $\pm$ 0.24	0.62 $\pm$ 0.35	1.29 $\pm$ 0.31	1.65 $\pm$ 0.52	1.87 $\pm$ 1.02	3.37 $\pm$ 0.74
TG6	M (N=5)	0.51 $\pm$ 0.03	1.72 $\pm$ 0.27	1.30 $\pm$ 0.24	2.90 $\pm$ 0.18	4.81 $\pm$ 0.29	6.17 $\pm$ 0.25
	F (N=6)	0.20 $\pm$ 0.24	0.95 $\pm$ 0.27	0.53 $\pm$ 0.27	0.83 $\pm$ 0.60	0.94 $\pm$ 0.46	2.13 $\pm$ 1.22

G, N, F and M were identified as the gender, number of mice by experimental group and gender, female gender and male gender, respectively. The legend of each experimental group was defined in the topic Methods

49 after inoculation, by experimental group and gender. In this table was revealed that there was not exist statistically significant differences ( $p > 0.05$ ) when the treated groups were compared with their respective groups control, for each gender, according to ANOVA test.

The mean  $\pm$  mean standard error of the tumor regression percentages were documented for each experimental group and gender: 62.33  $\pm$  28.45% for TG1-F (N=10), 70.67  $\pm$  25.48% for TG1-M (N=10), 74.00  $\pm$  26.16% for TG2-F (N=6), 77.43  $\pm$  28.08% for TG2-M (N=5), 44.50  $\pm$  23.44% for TG3-F (N=5), 61.75  $\pm$  27.72% for TG3-M (N=8), 36.33  $\pm$  29.54% for TG4-F (N=7), 45.67  $\pm$  28.62% for TG4-M (N=8), 30.33  $\pm$  27.77% for TG5-F (N=5), 37.33  $\pm$  21.42% for TG5-M (N=7), 61.00  $\pm$  29.90% for TG6-F (N=6) and 57.33  $\pm$  29.43% for TG6-M (N=5). The highest regression percentages were observed for TG2-F and TG2-M.

The quantity of DC treated F3II mammary carcinomas distributed for each tumor response type (PD, SD, PR or CR) and EchT global effectiveness were displayed in Table 2, by experimental group and gender. The higher effectiveness of the DC was observed for the TG2-F (66.6%) and TG2-M groups (80%) and the lowest for both genders in the TG4 and TG5 groups. Animals that died before treatment were not included in these percentages. The tumor remission was not observed in the tumors of CG1-F, CG2-F, CG1-M and CG2-M, which ruled out the induction of spontaneous remissions of F3II carcinoma.

The mean  $\pm$  standard error of the doubling time of the F3II mammary carcinoma (in days) were presented in Table 3 by each gender and experimental group. It was also observed that in the control groups of both genders, this kinetics parameter was lower than that in the treated groups. Additionally, an increase in the doubling time of this malignant tumor of all treated groups was induced by DC action, except in TG4-F. This increase was statistically significant ( $p = 0.0497$ ) in the TG2-F, TG2-M, TG3-F and TG6-F groups, according to the one-tail Mann-Whitney U test.

On the other hand, the values of tumor growth delay were computed for TG1-F (1.08 days with N=100), TG1-M (0.93 days with N=10), TG2-F (1.82 days with N=6), TG2-M (2.00 days; N=5), TG3-F (1.93 days; N=5), TG3-M (2.19 days; N=8), TG4-F (0.79 days; N=7), TG4-M (1.94 days; N=8), TG5-F (1.11 days; N=5), TG5-M (1.69 days; N=7), TG6-F (3.21 days; N=6) and TG6-M (1.77 days; N=5). The higher tumor growth delay was observed in TG2-F and TG2-M when MSNEII<sub>c</sub> was used. Additionally, the higher tumor growth delays were seen in TG6-F and TG3-M, being noticeable for TG3-M.

Physiological ulcerations were observed in the tumors of the control groups and DC treated groups. Furthermore, fibrosis of hard texture (with aspect of scab) were observed after EchT application in some tumors of each treated group.



**Table 2 Different F3II tumor response types after electrochemical therapy application by experimental group and gender**

Groups	Gender	F3II tumor responses after EChT application				Overall effectiveness (%) (PR + CR)
		PD (%)	SD (%)	PR (%)	CR (%)	
TG1	F (N = 10)	1 (10.0)	4 (40.0)	5 (50.0)	0 (0.0)	5 (50.0)
	M (N = 10)	1 (10.0)	3 (30.0)	6 (60.0)	0 (0.0)	6 (60.0)
TG2	F (N = 6)	1 (16.7)	1 (16.7)	4 (66.6)	0 (0.0)	4 (66.6)
	M (N = 5)	0 (0.0)	1 (20.0)	4 (80.0)	0 (0.0)	4 (80.0)
TG3	F (N = 5)	1 (20.0)	1 (10.0)	3 (30.0)	0 (0.0)	3 (30.0)
	M (N = 8)	2 (25.0)	3 (25.0)	4 (50.0)	0 (0.0)	4 (50.0)
TG4	F (N = 7)	2 (28.6)	3 (42.8)	2 (28.6)	0 (0.0)	2 (28.6)
	M (N = 8)	2 (25.0)	3 (37.5)	4 (50.0)	0 (0.0)	4 (50.0)
TG5	F (N = 5)	1 (20.0)	1 (20.0)	2 (40.0)	0 (0.0)	2 (40.0)
	M (N = 7)	1 (14.4)	3 (42.8)	3 (42.8)	0 (0.0)	3 (42.8)
TG6	F (N = 6)	1 (16.7)	2 (33.3)	3 (50.0)	0 (0.0)	3 (50.0)
	M (N = 5)	1 (20.0)	2 (40.0)	2 (40.0)	0 (0.0)	2 (40.0)

N was defined as the total number of mice carrying the F3II mammary carcinoma in each experimental group. The percentage (in brackets) by tumor response after electrochemical therapy was represented by %. PD, SD, PR and CR were denoted as progressive disease, stable disease, partial response and complete response, respectively. The legend of each experimental group was defined in the topic Methods

In Fig. 3 was showed the temporal behavior of the tumor volume after the inoculation of the tumor cells in the host by each experimental group for males (Fig. 3a)

**Table 3 Mean  $\pm$  mean standard error of the tumor doubling time before and after 31 days post-inoculation by experimental group and gender**

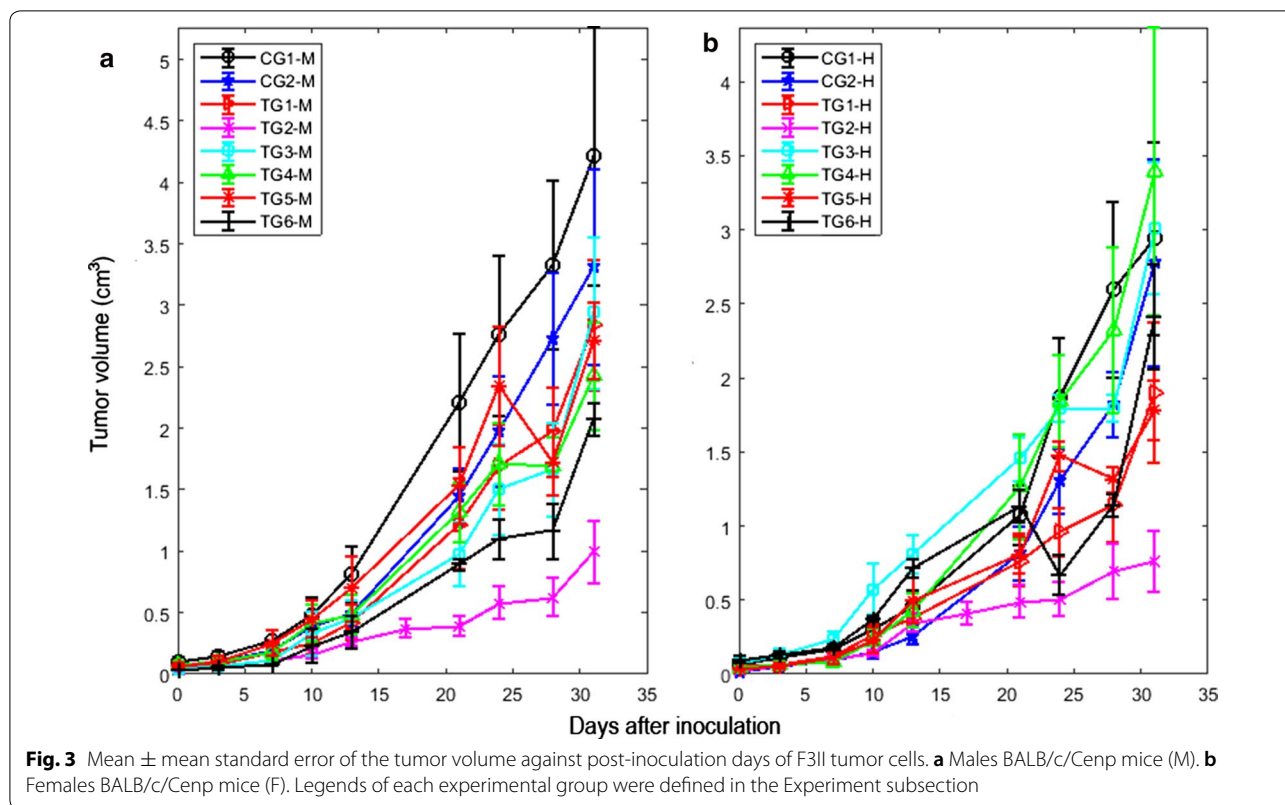
Groups	Gender	Doubling time of the F3II mammary carcinoma (days)	
		Before DC treatment	After DC treatment
CG1	M (N = 5)	4.33 $\pm$ 0.92	6.00 $\pm$ 2.20
	F (N = 5)	4.27 $\pm$ 1.97	6.50 $\pm$ 1.06
CG2	M (N = 5)	3.60 $\pm$ 0.93	3.20 $\pm$ 0.86
	F (N = 5)	2.00 $\pm$ 1.51	4.80 $\pm$ 1.02
TG1	M (N = 10)	1.60 $\pm$ 0.59	5.60 $\pm$ 1.80
	F (N = 10)	4.25 $\pm$ 1.22	7.00 $\pm$ 1.18
TG2	M (N = 5)	7.20 $\pm$ 2.35	11.20 $\pm$ 2.95 <sup>a</sup>
	F (N = 6)	5.17 $\pm$ 0.83	12.75 $\pm$ 2.35 <sup>a</sup>
TG3	M (N = 8)	5.17 $\pm$ 1.28	7.00 $\pm$ 1.93
	F (N = 5)	3.75 $\pm$ 1.25	9.25 $\pm$ 2.02 <sup>a</sup>
TG4	M (N = 8)	5.40 $\pm$ 1.72	6.20 $\pm$ 2.45
	F (N = 7)	5.80 $\pm$ 1.24	3.80 $\pm$ 0.58
TG5	M (N = 7)	3.80 $\pm$ 0.37	5.40 $\pm$ 1.16
	F (N = 5)	3.75 $\pm$ 1.38	5.33 $\pm$ 1.45
TG6	M (N = 5)	3.50 $\pm$ 2.51	5.66 $\pm$ 4.01
	F (N = 6)	5.00 $\pm$ 1.45	15.40 $\pm$ 0.98 <sup>a</sup>

The number of mice by gender in each experimental, female gender and male gender were represented by N, F and M, respectively. <sup>a</sup>Statistically significant differences ( $p=0.0497$ ) according to one tail Mann-Whitney U test. The legend of each experimental group was defined in the topic Methods

and females (Fig. 3b). The growth of primary F3II mammary carcinoma of the CG1-F and CG2-F was greater than that of the CG1-M and CG2-M, respectively. This finding was explained in [5]. In addition, a delay in the growth of this tumor histological variety was observed in each treated group with respect to that of their respective control groups for females and males.

In Fig. 4 was displayed the overall survival percentages of females (Fig. 4a) and males (Fig. 4b) for each experimental group. A significant decrease in the overall survival of the CG1-F mice with respect to TG1-F ( $p=0.0142$ ) was documented when the Logrank test was used. In addition, it was reported a significant decrease of this parameter in the TG2-M and TG6-M groups ( $p=0.0321$ ) when compared to CG1-M and CG2-M, respectively. Additionally, the mice survival in TG2-M lower than that in CG1-M was revealed. This finding was also observed in TG3-M, TG4-M and TG6-M with respect to CG2-M. 100% of the mice survival in TG1-M and TG1-F was reported.

Very larger tumor volumes (above 3 cm<sup>3</sup>) at 49 days after inoculation were observed in the majority of mice in all experimental group, except in TG2-F and TG2-M. Consequently, all mice were sacrificed in order to perform ethical aspects in laboratory animals (tumor burden did not exceed 10% of the host animal's normal body weight), as reported in [5, 11].



**Analysis of interpolated data**

Mathematical modeling was suggested to analyse TGK once finished the experimental part of this study. Although in Fig. 3 were shown larger mean standard errors of tumor volumes, fitting TGK of 21 (21/122=17.21%) mice (eight females and 13 males) were not made because their tumor volumes were higher and equal than 2 cm<sup>3</sup>, taken into account ethical aspects in laboratory animals above-mentioned. Consequently, 80 BALB/c/Cenp mice (40 males and 40 females) were included to fit individual TGK. Each experimental group was formed by 5 females and 5 males.

The averages and mean standard errors of  $\alpha$ ,  $\beta$ ,  $e_{\alpha}$ ,  $e_{\beta}$ , SSE, SE, PRESS, MPRESS, RMSE and  $D_{max}$  obtained from the individual analysis of TGK<sub>1</sub>, by experimental group, were shown in Tables 4 and 5 for females and males, respectively. It was reported that females showed higher values  $\alpha$  and lower  $\beta$  than those for males, which corroborated that TGK was faster in females than in males, as in [5]. Additionally,  $\alpha^*$  decreased respect to  $\alpha$  in all DC treated groups. Nevertheless,  $\beta$  did not change significantly before and after DC application (Tables 4 and 5).

In Table 6 was showed the averages and mean standard errors of  $i_0$ ,  $\gamma$ ,  $e_{i_0}$ ,  $e_{\gamma}$ , SSE, SE,  $r_a^2$ , PRESS, MPRESS, RMSE and  $D_{max}$  obtained from the individual analysis of TGK<sub>2</sub>, for females, by experimental group. These values were

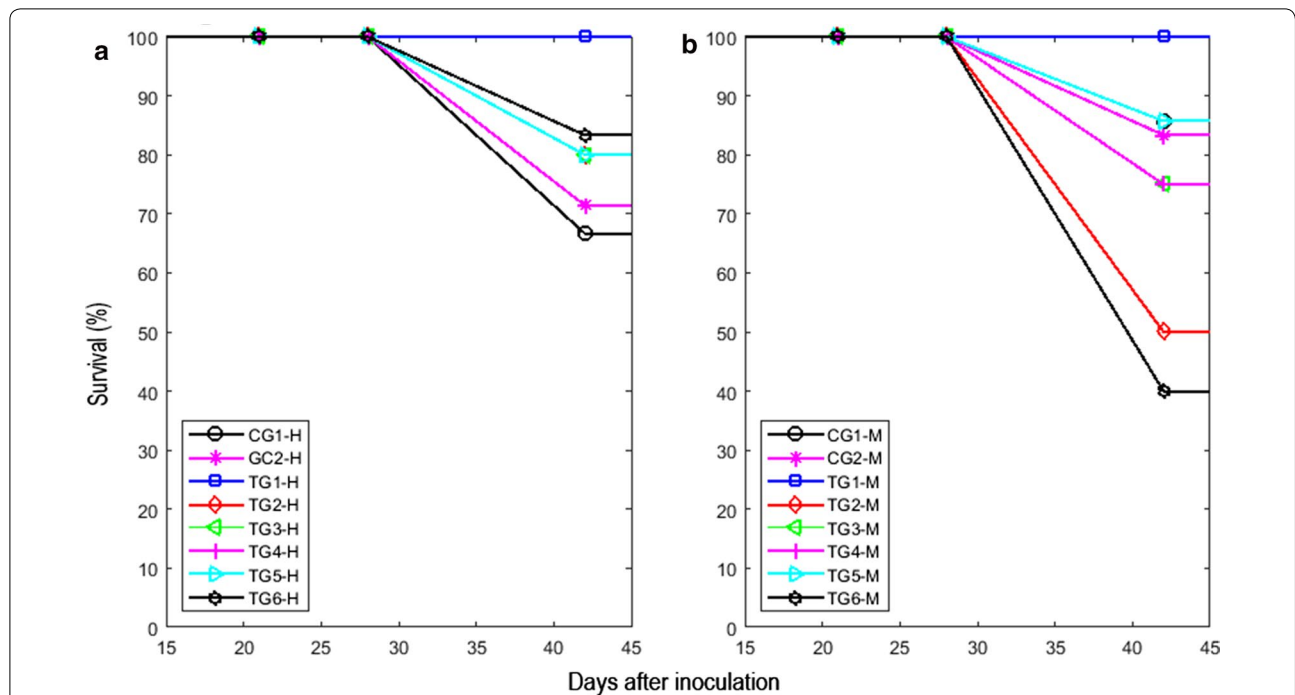
also shown for males and each group (Table 7). In addition, the values of the  $(i/i_0)$  ratio were shown in Tables 6 and 7.

For female, the higher values of the  $(i/i_0)$  ratio were observed in TG2-F, TG6-F and TG3-F whereas the lower values of  $\gamma$  in TG2-F and TG6-F. These findings were noticeable for TG2-F (Table 6). For male, the higher values of the  $(i/i_0)$  ratio were observed in TG2-M and TG6-M whereas the lower value of  $\gamma$  in TG2-M. These findings were noticeable for TG2-M (Table 7).

Tables 4, 5, 6, 7 showed that the average values of  $r_a^2$  were close to one and the values of SSE, SE, PRESS, MPRESS (for  $m=3$ ), RMSE and  $D_{max}$  were close to zero. MPRESS values for  $m=3, 4$  and  $5$  were similar in each experimental group and for each gender, as in [4, 5]. Therefore, in this study, these MPRESS values were reported for  $m=3$ .

**Discussion**

The minus sign of the weight gain in TG3-F and TG5-M at 7 days post-inoculation is interpreted as a decrease of this variable. Nevertheless, weight gain in these two groups increases after 7 days. Non significant differences in weight gain suggests that anesthesia, electrode insertion and applied treatment do not affect this parameter in



**Fig. 4** Survival versus days after inoculation of F3II cells in mice BALB/c/Cenp, by experimental group and gender. **a** Females. **b** Males. CG1 (first control group, in which C-I was used but DC was not applied). CG2 (second control group, in which C-II was used but DC was not applied). TG1 (first group treated with 2 mA for 10 min and C-I). TG2 (second group treated with 6 mA for 20 min and C-II). TG3 (third group treated with 2 mA for 10 min and C-III). TG4 (fourth group treated with 2 mA for 10 min and C-II). TG5 (fifth group treated with 6 mA for 10 min and C-II). TG6 (sixth group treated with 10 mA for 10 min and C-II). C-I was formed by four collinear electrodes with alternating polarities inserted perpendicularly along the largest diameter of the tumor (electrodes 1 and 3 were positives whereas electrodes 2 and 4 negatives), as shown in Fig. 1a. C-II were formed by four electrode pairs inserted into the tumor to 45° (electrode pair 1–2), 135° (electrode pair 3–4), 225° (electrode pair 5–6) and 325° (electrode pair 7–8), as shown in Fig. 1b. For C-II, electrodes 1, 4, 5 and 8 were positives whereas electrodes 2, 3, 6 and 7 negatives. C-III were formed by four electrode pairs arranged into the tumor to 0° (electrode pair 1–2), 90° (electrode pair 3–4), 180° (electrode pair 5–6) and 270° (electrode pair 7–8), as shown in Fig. 1c. For C-III, electrodes 2, 3, 5 and 8 were positives whereas electrodes 1, 4, 6 and 7 negatives

**Table 4** Mean ± mean standard error of parameters obtained from fitting of TGK<sub>1</sub> for female groups

Parameters	Experimental groups							
	CG1-F	CG2-F	TG1-F	TG2-F	TG3-F	TG4-F	TG5-F	TG6-F
$\alpha$ (days <sup>-1</sup> )	0.462 ± 0.044	0.490 ± 0.189	0.462 ± 0.044	0.490 ± 0.189	0.490 ± 0.189	0.490 ± 0.189	0.490 ± 0.189	0.490 ± 0.189
$\alpha^*$ (days <sup>-1</sup> )	–	–	0.167 ± 0.019	0.300 ± 0.057	0.224 ± 0.033	0.197 ± 0.027	0.206 ± 0.014	0.187 ± 0.049
$\beta$ (days <sup>-1</sup> )	0.024 ± 0.026	0.013 ± 0.060	0.009 ± 0.005	0.055 ± 0.029	0.026 ± 0.014	0.023 ± 0.004	0.001 ± 0.001	0.016 ± 0.016
$e_\alpha$ (days <sup>-1</sup> )	0.011 ± 0.003	0.008 ± 0.070	0.098 ± 0.075	0.073 ± 0.061	0.012 ± 0.005	0.015 ± 0.007	0.089 ± 0.057	0.037 ± 0.016
$e_\beta$ (days <sup>-1</sup> )	0.003 ± 0.000*	0.007 ± 0.002	0.006 ± 0.001	0.051 ± 0.006	0.001 ± 0.000**	0.008 ± 0.001	0.009 ± 0.003	0.015 ± 0.001
SSE (cm <sup>3</sup> )	0.016 ± 0.007	0.011 ± 0.002	0.113 ± 0.032	0.154 ± 0.051	0.613 ± 0.493	0.222 ± 0.107	0.079 ± 0.026	0.712 ± 0.248
SE (cm <sup>3</sup> )	0.019 ± 0.005	0.017 ± 0.001	0.026 ± 0.003	0.029 ± 0.005	0.048 ± 0.024	0.033 ± 0.009	0.022 ± 0.004	0.061 ± 0.015
$r_a^2$	0.994 ± 0.002	0.964 ± 0.015	0.977 ± 0.006	0.956 ± 0.007	0.980 ± 0.010	0.938 ± 0.038	0.964 ± 0.019	0.958 ± 0.013
PRESS (cm <sup>3</sup> )	0.001 ± 0.001	0.002 ± 0.001	0.012 ± 0.003	0.018 ± 0.006	0.029 ± 0.018	0.035 ± 0.022	0.016 ± 0.012	0.149 ± 0.063
MPRESS (cm <sup>3</sup> )	0.001 ± 0.001	0.002 ± 0.001	0.012 ± 0.003	0.018 ± 0.006	0.029 ± 0.018	0.035 ± 0.023	0.016 ± 0.012	0.151 ± 0.064
RMSE (cm <sup>3</sup> )	0.018 ± 0.005	0.017 ± 0.002	0.026 ± 0.003	0.029 ± 0.005	0.048 ± 0.024	0.032 ± 0.009	0.022 ± 0.004	0.060 ± 0.015
$D_{max}$ (cm <sup>3</sup> )	0.034 ± 0.010	0.038 ± 0.010	0.054 ± 0.008	0.059 ± 0.011	0.110 ± 0.047	0.074 ± 0.023	0.054 ± 0.004	0.118 ± 0.031

\* 0.0031 ± 0.0002, \*\*0.0012 ± 0.0001. TGK<sub>1</sub> was the first part of the unperturbed and direct current perturbed F3II tumor growth kinetic. The variable  $\alpha$  was the intrinsic growth rate of the tumor and  $e_\alpha$  its estimation error. The variable  $\beta$  was the growth deceleration factor and  $e_\beta$  its estimation error. The maximum distance, root means square error, sum of squares of errors, standard error of the estimate, adjusted goodness-of-fit coefficient of multiple determination, predicted residual error sum of squares and multiple predicted residual sum error of squares parameters were represented by  $D_{max}$ , RMSE, SSE, SE,  $r_a^2$ , PRESS and MPRESS (for  $m = 3$ ), respectively. Legends of CG1-F, CG2-F, TG1-F, TG2-F, TG3-F, TG4-F, TG5-F and TG6-F were defined in Experiment subsection

**Table 5 Average ± mean standard error of parameters obtained from fitting of TGK<sub>1</sub> for male groups**

Parameters	Experimental groups							
	CG1-M	CG2-M	TG1-M	TG2-M	TG3-M	TG4-M	TG5-M	TG6-M
$\alpha$ (days <sup>-1</sup> )	0.426 ± 0.059	0.422 ± 0.031	0.426 ± 0.059	0.422 ± 0.031	0.422 ± 0.031	0.422 ± 0.031	0.422 ± 0.031	0.422 ± 0.031
$\alpha^*$ (days <sup>-1</sup> )	–	–	0.226 ± 0.107	0.303 ± 0.051	0.201 ± 0.046	0.174 ± 0.049	0.244 ± 0.034	0.202 ± 0.087
$\beta$ (days <sup>-1</sup> )	0.034 ± 0.022	0.049 ± 0.016	0.059 ± 0.044	0.078 ± 0.050	0.017 ± 0.017	0.058 ± 0.046	0.028 ± 0.010	0.014 ± 0.014
$e_\alpha$ (days <sup>-1</sup> )	0.021 ± 0.050	0.011 ± 0.070	0.098 ± 0.057	0.037 ± 0.061	0.010 ± 0.003	0.015 ± 0.007	0.089 ± 0.057	0.037 ± 0.016
$e_\beta$ (days <sup>-1</sup> )	0.001 ± 0.000	0.007 ± 0.000*	0.002 ± 0.001	0.015 ± 0.002	0.002 ± 0.000**	0.009 ± 0.001	0.009 ± 0.003	0.051 ± 0.008
SSE (cm <sup>3</sup> )	0.184 ± 0.068	0.055 ± 0.032	0.147 ± 0.079	0.053 ± 0.014	0.300 ± 0.238	0.334 ± 0.219	0.072 ± 0.023	0.138 ± 0.095
SE (cm <sup>3</sup> )	0.064 ± 0.016	0.033 ± 0.011	0.026 ± 0.008	0.017 ± 0.003	0.063 ± 0.032	0.036 ± 0.015	0.019 ± 0.004	0.028 ± 0.011
$r_a^2$	0.979 ± 0.003	0.985 ± 0.007	0.964 ± 0.016	0.980 ± 0.005	0.922 ± 0.019	0.978 ± 0.008	0.991 ± 0.005	0.965 ± 0.007
PRESS (cm <sup>3</sup> )	0.030 ± 0.016	0.004 ± 0.002	0.023 ± 0.019	0.003 ± 0.001	0.018 ± 0.010	0.036 ± 0.020	0.007 ± 0.003	0.004 ± 0.003
MPRESS (cm <sup>3</sup> )	0.030 ± 0.016	0.004 ± 0.002	0.023 ± 0.019	0.003 ± 0.001	0.018 ± 0.010	0.036 ± 0.020	0.007 ± 0.003	0.005 ± 0.003
RMSE (cm <sup>3</sup> )	0.061 ± 0.015	0.032 ± 0.011	0.026 ± 0.008	0.017 ± 0.003	0.061 ± 0.031	0.036 ± 0.015	0.019 ± 0.004	0.028 ± 0.011
$D_{max}$ (cm <sup>3</sup> )	0.137 ± 0.037	0.064 ± 0.023	0.061 ± 0.020	0.035 ± 0.008	0.139 ± 0.065	0.069 ± 0.027	0.036 ± 0.008	0.065 ± 0.009

\* 0.0075 ± 0.0006, \*\*0.0021 ± 0.0003. TGK<sub>1</sub> was the first part of the unperturbed and direct current perturbed F3II tumor growth kinetic. The variable  $\alpha$  was the intrinsic growth rate of the tumor and  $e_\alpha$  its estimation error. The variable  $\beta$  was the growth deceleration factor and  $e_\beta$  its estimation error. The maximum distance, root means square error, sum of squares of errors, standard error of the estimate, adjusted goodness-of-fit coefficient of multiple determination, predicted residual error sum of squares and multiple predicted residual sum error of squares were represented by parameters  $D_{max}$ , RMSE, SSE, SE,  $r_a^2$ , PRESS and MPRESS (for  $m=3$ ), respectively. Legends of CG1-F, CG2-F, TG1-F, TG2-F, TG3-F, TG4-F, TG5-F and TG6-F were defined in Experiment subsection

**Table 6 Mean ± mean standard error of parameters obtained from fitting of TGK<sub>2</sub> for direct current treated female groups**

Parameters	Experimental groups					
	TG1-F	TG2-F	TG3-F	TG4-F	TG5-F	TG6-F
$i_0$ (mA)	1.561 ± 0.057	4.061 ± 0.238	1.413 ± 0.048	1.569 ± 0.062	4.415 ± 0.299	6.942 ± 0.485
$i/i_0$	1.333	1.477	1.415	1.275	1.359	1.440
$\gamma$ (days <sup>-1</sup> )	17.742 ± 6.769	12.890 ± 4.379	26.291 ± 11.321	36.567 ± 8.088	49.672 ± 18.227	13.672 ± 5.227
$e_{i_0}$ (days <sup>-1</sup> )	0.016 ± 0.000*	0.043 ± 0.004	0.054 ± 0.000**	0.093 ± 0.000***	0.021 ± 0.006	0.034 ± 0.003
$e_\gamma$ (days <sup>-1</sup> )	0.056 ± 0.002	0.004 ± 0.000 <sup>+</sup>	0.921 ± 0.083	0.015 ± 0.004	0.023 ± 0.005	0.007 ± 0.000 <sup>++</sup>
SSE (cm <sup>3</sup> )	0.115 ± 0.052	0.068 ± 0.024	0.522 ± 0.268	0.392 ± 0.130	0.226 ± 0.081	0.226 ± 0.081
SE (cm <sup>3</sup> )	0.040 ± 0.013	0.036 ± 0.009	0.082 ± 0.034	0.087 ± 0.017	0.068 ± 0.010	0.068 ± 0.010
RMSE (cm <sup>3</sup> )	0.039 ± 0.013	0.034 ± 0.008	0.080 ± 0.033	0.084 ± 0.017	0.065 ± 0.010	0.065 ± 0.010
PRESS (cm <sup>3</sup> )	0.017 ± 0.013	0.014 ± 0.007	0.103 ± 0.072	0.098 ± 0.048	0.021 ± 0.008	0.021 ± 0.008
MPRESS (cm <sup>3</sup> )	0.017 ± 0.013	0.013 ± 0.007	0.104 ± 0.072	0.098 ± 0.049	0.020 ± 0.007	0.020 ± 0.007
$r_a^2$	0.997 ± 0.001	0.989 ± 0.006	0.996 ± 0.002	0.991 ± 0.004	0.994 ± 0.002	0.994 ± 0.002
$D_{max}$ (cm <sup>3</sup> )	0.085 ± 0.032	0.065 ± 0.015	0.182 ± 0.068	0.175 ± 0.030	0.158 ± 0.043	0.158 ± 0.043

\* 0.016 ± 0.0001, \*\*0.054 ± 0.0005, \*\*\*0.093 ± 0.0002, +0.004 ± 0.0001 and ++0.007 ± 0.0006. TGK<sub>2</sub> was the second part of the direct current perturbed F3II tumor growth kinetic. The variable  $i_0$  was the polarization current and  $e_{i_0}$  its estimation error. The variable  $\gamma$  was the exponential decay ratio and  $e_\gamma$  its estimation error. The maximum distance, root means square error, sum of squares of errors, standard error of the estimate, adjusted goodness-of-fit coefficient of multiple determination, predicted residual error sum of squares and multiple predicted residual sum error of squares were identified by parameters  $D_{max}$ , RMSE, SSE, SE,  $r_a^2$ , PRESS and MPRESS (for  $m=3$ ), respectively. Legends of TG1-F, TG2-F, TG3-F, TG4-F, TG5-F and TG6-F were defined in Experiment subsection

BALB/c/Cenp mice carrying the F3II carcinoma for both genders.

Different findings of this study corroborate those reported in [5], such as male mice weights higher than those female mice; the weight gain over time of all BALB/c/Cenp mice; the variability of the F3II mammary carcinoma latency time; BALB/c/Cenp mouse suitables for this tumor histological variety (tumor grows in 100%

of BALB/c/Cenp mice); cell line highly invasive and metastatic and greater growth delay. Regression percentage and doubling time of this DC treated tumor type.

The greatest growth delay, mean doubling time, regression percentage of the F3II carcinoma and DC overall effectiveness in TG2-F and TG2-M confirm that this tumor histological variety should be treated with low DC intensities and longer exposure time, as suggest in [5].

**Table 7 Mean ± mean standard error of parameters obtained from fitting of TGK<sub>2</sub> for direct current treated male groups**

Parameters	Experimental groups					
	TG1-M	TG2-M	TG3-M	TG4-M	TG5-M	TG6-M
$i_0$ (mA)	1842 ± 0.158	4.147 ± 0.186	1.495 ± 0.090	1.516 ± 0.075	4.333 ± 0.232	7.119 ± 1.084
$i/i_0$	1.086	1.447	0.968	1.319	1.385	1.405
$\gamma$ (days <sup>-1</sup> )	13.197 ± 3.920	4.536 ± 0.769	7.526 ± 2.513	12.742 ± 6.769	27.890 ± 9.379	10.291 ± 2.321
$e_{i_0}$ (days <sup>-1</sup> )	0.021 ± 0.003	0.032 ± 0.004	0.019 ± 0.000*	0.013 ± 0.000**	0.053 ± 0.009	0.094 ± 0.005
$e_\gamma$ (days <sup>-1</sup> )	0.009 ± 0.002	0.007 ± 0.000 <sup>+</sup>	0.008 ± 0.002	0.014 ± 0.009	0.256 ± 0.078	0.048 ± 0.007
SSE (cm <sup>3</sup> )	0.649 ± 0.131	0.101 ± 0.033	0.221 ± 0.079	0.115 ± 0.052	0.068 ± 0.024	0.522 ± 0.268
SE (cm <sup>3</sup> )	0.120 ± 0.003	0.041 ± 0.008	0.068 ± 0.013	0.040 ± 0.013	0.036 ± 0.009	0.082 ± 0.034
RMSE (cm <sup>3</sup> )	0.116 ± 0.004	0.040 ± 0.008	0.066 ± 0.012	0.039 ± 0.013	0.034 ± 0.008	0.080 ± 0.033
PRESS (cm <sup>3</sup> )	0.095 ± 0.040	0.008 ± 0.005	0.031 ± 0.012	0.017 ± 0.013	0.014 ± 0.007	0.103 ± 0.072
MPRESS (cm <sup>3</sup> )	0.095 ± 0.041	0.009 ± 0.005	0.028 ± 0.012	0.017 ± 0.013	0.013 ± 0.007	0.104 ± 0.072
$r_a^2$	0.960 ± 0.035	0.794 ± 0.198	0.993 ± 0.003	0.997 ± 0.001	0.989 ± 0.006	0.996 ± 0.002
$D_{max}$ (cm <sup>3</sup> )	0.956 ± 0.038	0.992 ± 0.002	0.992 ± 0.003	0.085 ± 0.032	0.065 ± 0.015	0.182 ± 0.068

\* 0.019 ± 0.0005, \*\* 0.013 ± 0.0003 and <sup>+</sup>0.007 ± 0.0001. TGK<sub>2</sub> was the second part of the direct current perturbed F3II tumor growth kinetic. The variable  $i_0$  was the polarization current and  $e_{i_0}$  its estimation error. The variable  $\gamma$  was the exponential decay ratio and  $e_\gamma$  its estimation error. The maximum distance, root means square error, sum of squares of errors, standard error of the estimate, adjusted goodness-of-fit coefficient of multiple determination, predicted residual error sum of squares and multiple predicted residual sum error of squares were denoted by parameters  $D_{max}$ , RMSE, SSE, SE,  $r_a^2$ , PRESS and MPRESS (for  $m = 3$ ), respectively. Legends of TG1-M, TG2-M, TG3-M, TG4-M, TG5-M and TG6-M were defined in Experiment subsection

These findings may suggest that in TG2-F and TG2-M are induced higher tumor damage percentages due to DC cytotoxic action, as reported experimentally in [1–3, 5, 15]. DC cytotoxic action is explained by induction of toxic products into the tumor from the electrochemical reactions around the electrodes during its application [1–3, 16–18] and the immune system activation [5].

High tumor damage percentages by DC action supposes that  $\phi$  (by apoptosis and/or necrosis induced around electrodes) is increased and GF is decreased, where  $\phi$  and GF are cell loss factors and tumor growth fraction, respectively. As a result, the tumor mean doubling time (DT) increases, according to the Steel equation ( $DT = T_c \ln 2 / (1 - \phi) \ln(1 + GF)$ ) with  $GF = N_{cc} / (N_{cc} + N_{n-cc})$ , where  $T_c$ ,  $N_{cc}$ , and  $N_{n-cc}$  are defined the cell cycle time, number of tumor cells in the cell cycle and the number of tumor cells that are not in the cell cycle, respectively [19]. Nevertheless, the quick growth of the tumor volume 40 days after inoculation may be explained because GF increases quickly because  $N_{cc}$  (due to the fast process of cell duplication) and/or  $N_{n-cc}$  (number of non-divisible cells enter rapidly to the cell cycle) increase, resulting in a decrease of DT. In this case, metastasis induced by DC is discarded taking into account results reported by Zhou et al. [20].

For the case of unperturbed F3II mammary carcinoma, DT is shorter because  $\phi$  (apoptosis, necrosis, exfoliation and metastasis, mainly metastasis) and GF (quick cellular multiplication) increase, confirming that this tumor histological variety is highly aggressive and metastatic. This may be related to the finding that the high BALB/c/Cenp/

mice death percentage is mainly due to the metastasis. As a result, EChT should be applied with care in this tumor histological variety.

González et al. [5] suggest that the highly aggressive and metastatic primary F3II mammary carcinoma has a major electrical conductivity and therefore its high sensitivity to DC action. This may explain, in part, the six mice deaths during and after DC application. Irreversible alterations in liver and kidney organs may be due to the metabolic burden of the products of tumor rupture, as documentd in [5]. Additionally, high amount of heat induced in the tumor by MPE should not be discarded, as predict simulations reported in [9]. Therefore, EChT should be also applied with care in this tumor histological variety.

Unlike [5], CR is not observed in any DC treated tumor in this study. Nevertheless, higher values of the overall EChT effectiveness suggest that this therapy may be addressed to highly aggressive and metastatic primary tumors, as the F3II mammary carcinoma. Despite this, it should not be categorically affirmed that EChT is safe in laboratory animals, as reported in [5].

Larger mean standard errors observed in all experimental groups may be explained from biological individuality of each mouse, physiological ulcerations in control and DC treated tumors, the diversity of response of each tumor after EChT application and the fibrosis in some DC treated tumors. These errors are marked for tumor volumes higher than 1.5 cm<sup>3</sup> because their borders are very irregular. The F3II carcinoma and mouse biological individualities and the individual response of each



mouse to EChT action may explain why different tumor sizes are observed at each instant of time. It is important to know that physiological ulceration is characteristic of this tumor histological variety, as reported in [10]. Furthermore, fibrosis after EChT application is observed in previous studies [5, 6].

Tumor damages induced by DC cytotoxic action during and after EChT application are well documented in the literature [1–3, 15–18, 20]. Nevertheless, the induction of necrosis (around anode and cathode) and/or apoptosis (around anode) do not necessarily lead to a complete remission of the tumor. These irreversible damages and others are necessary conditions but not sufficient to reach this tumor response type after the application of EChT or any antitumor therapy. That is why, histological analysis to verify tumor damage is not performed in this study. CR of a tumor treated with EChT or any antitumor therapy may be reached by means of longitudinal studies that combine experimental and theoretical results to know in depth how these therapies influence on TGK. That is why, this study and [5] are carried out.

The average values of  $r_a^2$  close to one and the values close to zero of  $e_{\alpha}$ ,  $e_{\beta}$ ,  $e_{\gamma}$ ,  $e_{i_0}$ , SSE, SE, PRESS, MPRESS (for  $m=3$ ), RMSE and  $D_{\max}$  confirm that the MGE is feasible to describe experimental data of primary F3II mammary carcinoma treated and not treated with DC for each gender and C-I, C-II and C-III. This finding may suggest that the MGE is applicable to fit data of DC treated tumors with different values of  $i$  and  $t_{\text{exp}}$  and any geometry of electrode array (MSNEII<sub>c</sub>, MSNEII<sub>nc</sub> and MPE).

In previous works, it has been suggested that EChT effectiveness increases for higher values of the  $(i/i_0)$  ratio and lower value of  $\gamma$  [4–6]. Nevertheless, these works do not discuss how this effectiveness is affected when  $t_{\text{exp}}$  and electrode array geometry are considered. Although  $t_{\text{exp}}$  and electrode array geometry do not appear explicitly in the MGE, this study demonstrates that their influences on the F3II mammary carcinoma are implicit in the parameters  $i_0$  and  $\gamma$ , which depend also on  $i$  and the tumor histological variety growing in the host. Consequently, the  $(i/i_0)$  ratio and parameters  $a_1$  and  $a_2$  also depend on  $t_{\text{exp}}$ , electrode array geometry, tumor histological variety and type of host.

Results observed in TG2-F and TG2-M demonstrate that higher  $(i/i_0)$  ratio, longer  $t_{\text{exp}}$  and lower value of  $\gamma$  correspond to the greater growth delay of primary F3II mammary carcinoma. The lowest value of  $\gamma$  corresponds to the longest duration of the net anti-tumor effect of the EChT induced in the tumor [4–6] and long  $t_{\text{exp}}$  is suggested in [5]. Additionally, this study indirectly confirms the hypothesis that the complete response of a solid tumor is reached from a threshold value of the  $(i/i_0)$  ratio, named  $(i/i_0)_u$ . This may be argued because the complete

response of the primary F3II mammary carcinoma after EChT application is not observed for the condition  $(i/i_0) < (i/i_0)_u$ . González et al. [5] report experimentally that  $(i/i_0)_u = 1.50$  for this tumor histological variety. These findings demonstrate the good correspondence between the theoretical and experimental results and suggest that the primary F3II mammary carcinoma should be treated with EChT for long  $t_{\text{exp}}$  and lower  $i$ . Additionally, they confirm the existence of  $(i/i_0)_u$  and corroborate the hypothesis that the more aggressive the tumor is the more sensitive to EChT. On the other hand, although tumor complete remission is not reached, significant delay of tumor growth observed in TG2-F and TG2-M may indicate that EChT constitutes a feasible option for highly aggressive and metastatic primary tumors, as in [5].

Except TG2-F and TG2-M, larger mean standard errors of the tumor volume may explain why treated groups and their respective control groups do not differ significantly when they are compared at each time instant. The latter is observed for each gender and other experimental groups. An explanation to these larger mean standard errors is given in [5]. The individual behavior of each BALB/c/Cenp mouse bearing the primary F3II mammary carcinoma observed in both control and treated groups justifies, in part, why the control group is not the true reference for treated groups, in agreement with [5, 21]. Consequently, the real control for an EChT treated tumor is the mouse itself before therapy application. That is why, the analysis of TGK should be made individually in the same mouse, bearing the same tumor type, before and after EChT application, as in [5].

Calzado et al. [9] report theoretically that all configurations of MPE induce a tumor damage percentage  $\geq 80\%$  whereas MSNEII<sub>c</sub> and MSNEII<sub>nc</sub>  $\leq 30\%$ . In contrast, this work shows that there are no significant differences in TGK when MPE and MSNEII<sub>c</sub> are used, except for TG2-F and TG2-M (C-II and  $t_{\text{exp}} = 20$  min). This experimental finding is observed for both genders. Consequently, two suggestions arise: MPE and MSNEII<sub>c</sub> may be indistinctly used for cancer under EChT application and  $t_{\text{exp}}$  influences more on TGK delay than C-II, corroborating that larger  $t_{\text{exp}}$  and low DC doses should be recommended for highly aggressive and metastatic primary tumors.

The experimental fact that C-II does not induce high tumor damage percentage, as predicted theoretically in [9], may be explained because the F3II mammary carcinoma is a highly aggressive and metastatic primary tumor [5, 10]. It is documented that the high aggressiveness of a solid malignant tumor is due to its high intra-tumor heterogeneity and anisotropy that influence on the evolution and metastasis of the cancer, therapy resistance and the immune response [22–24]. Intra-tumor

heterogeneity and anisotropy of this tumor histological variety are confirmed in [5] and in this study. Additionally, these two aspects are not included in the simulations made in [9], another reason that explains differences between these theoretical and experimental results. On the other hand, intra-tumor heterogeneity has been also linked to the stochastic spatial of cancer growth [25]. This stochastic behavior of the tumor growth is a direct consequence of the large biological individuality of DC treated and untreated tumors, as confirmed in this study and in [4–6].

Calzado et al. [9] report that higher values of the temperature and the heat generated by MPE influence more on the high tumor damage percentages than the electrochemical processes induced in the tumor by the geometries of electrode arrays. In contrast, this study suggests that these two physical quantities do not provoke significant delay on TGK in the experimental groups, in which C-II is used. We do not discard that the temperature and the heat induced in this tumor histological variety influence on unexpected EChT effectiveness for C-II, as predicted theoretically in [9]. This hypothesis may be justified because high values of these two physical quantities may induce an inflammatory process in the tumor. It has been documented that the inflammation induced in tumors is linked with their growth and metastasis [26]. Therefore, we should be very careful with the use of MPE.

Despite the most accepted antitumor mechanism of EChT is electrochemical [2, 16], acid and basic pH fronts that induce MPE overlap rapidly due to the small separation distance in each pair of electrodes. This rapid overlapping of acidic and basic pH fronts generated by MPE does not occur when the MSNEII<sub>c</sub> and MSNEII<sub>nc</sub> are inserted into the tumor. Recently, Calzado et al. [17] conclude that the greater separation between electrodes induce the higher area of tissue destruction. Therefore, we do not affirm completely that MPE is better than MSNEII<sub>c</sub> and MSNEII<sub>nc</sub> when EChT is used, in the current mode [8] and voltage mode [27].

Although the results of this study and those described in [5] agree, some differences may be mentioned. Unlike [5], in this study, it is experimentally proved the MPE effectiveness on the primary F3II mammary carcinoma. Additionally, in it is reported how MPE and MSNEII<sub>c</sub> influence on MGE. This suggests that the effect induced by any geometry of electrode array on TGK may be evaluated by means of MGE. These results have no precedent in the literature. As a result, this work encourages to go deeper on how  $(i/i_0)_u$  and the parameter  $\gamma$  depend explicitly on  $t_{exp}$ , electrode array geometry [MPE, MSNEII<sub>c</sub> or MSNEII<sub>nc</sub>], tumor histological variety, host type, number of times that EChT is repeated and combination of EChT with any antitumor therapy.

The results of this study and those reported in [5, 8, 9, 17, 18, 27] suggest that the growth delay of the primary F3II mammary carcinoma may be increased optimizing MSNEII<sub>c</sub>, MSNEII<sub>nc</sub> and MPE geometries and/or combining EChT with other physical therapies [15, 28] and/or other antitumor therapies. For instance, a new question arises: can MGE be used to fit tumor growth kinetics treated with combined therapies (i.e., direct current and immunotherapy/chemotherapy)?

The aforementioned may be important to plan and personalize EChT in order to reach the complete remission or the stationary partial response (cancer can be turned into a controlled chronic disease) of any tumor histological variety growing in a specific host. This cannot be obtained if we focus separately in theoretical or experimental results. That is why, we address our efforts to report works that integrate both results, as this study, which confirms that the knowledge and therapeutic of the cancer is in the frontier of oncology, mathematics, physics, biophysics and other sciences, as the results reported in [9, 14, 27, 29] suggest. In addition, this integrated analysis of experimental results and those that provide mathematical modeling will ensure communication in the shortest time between basic and clinical science and the proposal of an optimal personalized therapy.

## Conclusions

In conclusion, the electrochemical therapy may be potentially addressed to highly aggressive and metastatic primary F3II murine mammary carcinoma and the modified Gompertz equation may be used to fit data of this direct current treated carcinoma. Additionally, electrochemical therapy effectiveness depends on the exposure time, geometry of multiple-electrodes and ratio between the direct current intensity applied and the polarization current induced in the tumor.

## Abbreviations

EChT: Electrochemical therapy; DC: Low-level direct current; TGK: Tumor growth kinetics; MGE: Modified Gompertz equation;  $i$ : Direct current intensity;  $t_{exp}$ : Time of exposure of direct current; DT: Mean tumor doubling time;  $T_c$ : Cell cycle time;  $\phi$ : Cell loss factors; GF: Tumor growth fraction;  $N_{cc}$ : Number of tumor cells in the cell cycle;  $N_{n-cc}$ : Number of tumor cells that are not in the cell cycle; MSNEII: Multiple-straight needle electrodes inserted individually in the tumor; MSNEII<sub>c</sub>: MSNEII inserted colineally along the major axis of the tumor; MSNEII<sub>nc</sub>: MSNEII inserted non-colineally anywhere of the tumor; MPE: Multiple-pairs of electrodes; NaCl: Sodium chloride; CENPALAB: Centro Nacional para la Producción de Animales de Laboratorio; LABIOFAM: Laboratorios Biológicos Farmacéuticos; C-I: MSNEII<sub>c</sub> formed by four collinear electrodes with alternating polarities inserted perpendicularly along the largest diameter of the tumor; C-II: MPE formed by electrode pairs arranged to 45° (electrode pair 1–2), 135° (electrode pair 3–4), 225° (electrode pair 5–6) and 325° (electrode pair 7–8); C-III: MPE formed by electrode pairs arranged to 0° (electrode pair 1–2), 90° (electrode pair 3–4), 180° (electrode pair 5–6) and 270° (electrode pair 7–8); CG1: Control group in which C-I is used but DC is not applied; CG2: Control group in which C-II is used but DC is not applied; TG1: Group treated with 2 mA for 10 min and C-I; TG2: Group treated with 6 mA for

20 min and C-II; TG3: Group treated with 2 mA for 10 min and C-III; TG4: Group treated with 2 mA for 10 min and C-II; TG5: Group treated with 6 mA for 10 min and C-II; TG6: Group treated with 10 mA for 10 min and C-II; CG1-F, CG2-F, TG1-F, TG2-F, TG3-F, TG4-F, TG5-F and TG6-F are these groups for females whereas CG1-M, CG2-M, TG1-M, TG2-M, TG3-M, TG4-M, TG5-M and TG6-M for the males; TGK<sub>1</sub>: First part comprises from the moment of inoculation of the tumor cells in the host until the day that DC is applied; TGK<sub>2</sub>: Second part includes from the moment of DC application until the day of sacrifice of the mice for ethical reasons;  $V^*(t)$ : Tumor volume at time  $t$  after DC treatment;  $\alpha$ : Intrinsic growth rate of the tumor;  $\beta$ : Growth deceleration factor related to the endogenous antiangiogenesis processes;  $\alpha^*$ : modified tumor growth rate due to DC action;  $i_0$ : Polarization current;  $\gamma$ : First-order exponential decay rate of the net effect induced in the solid tumor after the DC is removed;  $a_1$  and  $a_2$ : Dimensionless parameters that depend on the ( $i/i_0$ ) ratio;  $D_{max}$ : Maximum distance; RMSE: Root Means Square Error; SSE: Sum of squares of errors; SE: Standard error of the estimate;  $r^2$ : Goodness-of-fit;  $r_a^2$ : Adjusted goodness-of-fit coefficient of multiple determination; PRESS: Predicted residual error sum of squares; MPRESS: Multiple predicted residual sum error of squares;  $V_j^*$ :  $j$ -th measured tumor volume at discrete time  $t_j$ ;  $\hat{V}_j^*$ :  $j$ -th estimated tumor volume by MGE;  $n_1$ : Number of experimental points;  $k$ : Number of parameters;  $(V_j^*)$ : Estimated value of  $V_j^*$  when MGE is obtained without the  $j$ -th observation;  $e_{\alpha}$ : Estimation error of the parameter  $\alpha$ ;  $e_{\beta}$ : Estimation error of the parameter  $\beta$ ;  $e_{\gamma}$ : Estimation error of the parameter  $\gamma$ ;  $e_{i_0}$ : Estimation error of the parameter  $i_0$ ;  $N$ : Total number of determinations;  $\min$ : Minutes.

#### Acknowledgements

The authors are greatly indebted to Editor and unknown reviewers for their valuable suggestions that improve significantly this manuscript. The authors thank the help of laboratory technicians from Centro de Inmunología Molecular and CENPALAB. In addition, we really appreciate the valuable help of Yenia Infantes, who improved the English language of this manuscript.

#### Authors' contributions

NAV, JLGR, MMG, BOB, DFM, EMC, ARSC, LMT, JIM, VGSG, KGM, KLM and LEBC designed the study. JLGR, MMG, BOB, DFM, DJP, OOP, JAM, AGD, KGM, MLM, KLM and LEBC performed the experiments. NAV, JLGR, MMG, BOB, DFM, EMC, ARSC, LMT, JIM, VGSG and LEBC ensured the quality control of data and algorithms. NAV, MMG, BOB, JLGR, DFM, EMC, ARSC, LMT, JIM, VGSG, DJP, OOP, JAM, AGD, KGM, MLM, KLM, HMCC and LEBC analysed and interpreted the data. NAV, JLGR, EMC, ARSC, LMT and LEBC simulated different electrode arrays. NAV, MMG, JIM and LEBC participated in statistical analysis. NAV, MMG and LEBC drafted the manuscript. MMG, DFM, JIM and LEBC revised the manuscript and supervised the entire work. All authors read and approved the final manuscript.

#### Funding

This research is supported by the Centro Nacional de Electromagnetismo Aplicado (Grant Number 9116); and the Departamento de Farmacia (Grant Numbers 9811 and 9812), both Universidad de Oriente, Santiago de Cuba, Cuba. In addition, Facultad de Ciencias de la Universidad Autónoma de Santo Domingo, Dominican Republic, covers the cost of this manuscript.

#### Availability of data and materials

Data used in this study cannot be shared because some of the researchers are linked to pharmaceutical and biotechnological Cuban industries by a research contract that includes sensitive experiments. Consequently, this research is under a confidentiality agreement signed for 10 years. Thus, none of the authors of this manuscript may reveal original data. Original data is kept in Bioelectricity group, Research and Innovation Department, National Center of Applied Electromagnetism, Oriente University. This confidentiality agreement is protected by the Cuban Copyright Law (National Legislature Parliament of the Cuba Republic; Law 14; December 28, 1977; chapters III, VII, IX, X), the Invention Law (Official Gazette of the Cuba Republic; Government Decree No. 290; February 1, 2012; pages 9–27; ISSN 1682–7511) and the Work Code includes such inventions under a labor contract (Law 116 of 2014). Besides, Cuban Code of Ethics backs this argumentation. Researchers can directly contact Dr. Luis Enrique Bergues Cabrales, head of the Bioelectricity group (Centro Nacional de Electromagnetismo Aplicado (CNEA), Universidad de Oriente, Cuba) to request access to the experimental data. His email is berguesc@yahoo.com

For fielding data access queries, researchers can also contact with Dra. Clara Esther Martínez Manrique, President of the Ethics Committee of CNEA, Universidad de Oriente. Her e-mail is clarita@uo.edu.cu

#### Ethics approval and consent to participate

This study is approved at the Centro Nacional para la Producción de Animales de Laboratorio (CENPALAB), La Habana, Cuba.

#### Consent for publication

Not applicable.

#### Competing interests

The authors declared no conflict of interest. Authors Victoriano Gustavo Sierra González, Dasha Fuentes Morales, Daniel Jay Pérez, Oscar Ortiz Posada, Janet Avellanet Martínez, Arlem García Delgado, Karina García Martínez, Mayrel Labrada Mon and Kalet León Monzón were employed by the company Grupo de las Industrias Biotecnológica y Farmacéuticas (BioCubaFarma, La Habana, Cuba). The remaining authors declare that the research was conducted in the absence of any commercial or financial relationships that could be construed as a potential competing interests.

#### Author details

<sup>1</sup> Universidad Autónoma de Santo Domingo, Santo Domingo, República Dominicana. <sup>2</sup> Universidad Católica del Cibao, La Vega, República Dominicana. <sup>3</sup> Departamento de Investigación e Innovación, Centro Nacional de Electromagnetismo Aplicado, Dirección de Ciencia e Innovación, Universidad de Oriente, Ave. Las Américas s/n, Santiago de Cuba 90400, Cuba. <sup>4</sup> Departamento de Farmacia, Facultad de Ciencias Naturales y Exactas, Universidad de Oriente, Santiago de Cuba, Cuba. <sup>5</sup> Laboratorio Farmacéutico Oriente, Santiago de Cuba, Cuba. <sup>6</sup> Centro Nacional para la Producción de Animales de Laboratorio, La Habana, Cuba. <sup>7</sup> Departamento de Telecomunicaciones, Facultad de Ingeniería Eléctrica, Universidad de Oriente, Santiago de Cuba, Cuba. <sup>8</sup> Instituto Universitario de Investigación de Matemáticas y Aplicaciones, Universidad de Zaragoza, Saragossa, Spain. <sup>9</sup> Grupo de las Industrias Biotecnológica y Farmacéuticas (BioCubaFarma), La Habana, Cuba. <sup>10</sup> Centro de Inmunología Molecular, La Habana, Cuba.

Received: 2 December 2019 Accepted: 25 April 2020

Published online: 07 May 2020

#### References

- Li Y, Xu T, Chen X, Lin S, Cho M, Sun D, et al. Effects of direct current electric fields on lung cancer cell electrotaxis in a PMMA-based microfluidic device. *Anal Bioanal Chem*. 2017;409:2163–78. <https://doi.org/10.1007/s00216-016-0162-0>.
- Cabuy E. Electrochemical therapy in cancer treatment. *Reliable Cancer Therapies*. Energy-based therapies. 2012;6:1–20. [http://www.researchgate.net/profile/Erik\\_Cabuy2/publication/301346731\\_Electrochemical\\_Therapy\\_in\\_Cancer\\_Treatment/links/5713be8208ae39beb87cea6e/Electrochemical-Therapy-in-Cancer-Treatment.pdf](http://www.researchgate.net/profile/Erik_Cabuy2/publication/301346731_Electrochemical_Therapy_in_Cancer_Treatment/links/5713be8208ae39beb87cea6e/Electrochemical-Therapy-in-Cancer-Treatment.pdf).
- Xin YL, Xue FZ, Ge BS, Zhao FR, Shi B, Zhang W. Electrochemical treatment of lung cancer. *Bioelectromagnetics*. 1997;18(1):8–13. <https://doi.org/10.1002/%5bSICI%5d1521-186X>.
- Cabrales LEB, Aguilera AR, Jiménez RP, Jarque MV, Mateus MAO, Ciria HMC, et al. Mathematical modeling of tumor growth in mice following low-level direct electric current. *Math Comput Simul*. 2008;78(1):112–20. <https://doi.org/10.1016/j.matcom.2007.06.004>.
- González MM, Morales DF, Cabrales LEB, Pérez DJ, Montijano JI, Castañeda ARS, et al. Dose-response study for the highly aggressive and metastatic primary F3II mammary carcinoma under direct current. *Bioelectromagnetics*. 2018;39(6):460–75. <https://doi.org/10.1002/bem.22132>.
- Cabrales LEB, Nava JAG, Aguilera AR, Joa JAG, Ciria HMC, González MM, et al. Modified Gompertz equation for electrotherapy murine tumor growth kinetics: predictions and new hypotheses. *BMC Cancer*. 2010;10(1):589–99. <https://doi.org/10.1186/1471-2407-10-589>.
- Cabrales LEB, Montijano JI, Schonbek M, Castañeda ARS. A viscous modified Gompertz model for the analysis of the kinetics of tumors under electrochemical therapy. *Math Comput Simul*. 2018;151:96–110. <https://doi.org/10.1016/j.matcom.2018.03.005>.

8. Pupo AEB, González MM, Cabrales LEB, Reyes JB, Oria EJR, Nava JGG, et al. 3d current density in tumors and surrounding healthy tissues generated by a system of straight electrode arrays. *Math Comput Simul.* 2017;138:49–64. <https://doi.org/10.1016/j.matcom.2017.01.004>.
9. Calzado EM, Rodríguez JLG, Cabrales LEB, García FM, Castañeda ARS, Delgado IMG, et al. Simulations of the electrostatic field, temperature and tissue damage generated by multiple-electrodes for electrochemical treatment. *Appl Math Modell.* 2019;76:699–716. <https://doi.org/10.1016/j.apm.2019.05.002>.
10. Alonso DF, Fariás EF, Urtreger A, Ladedá V, Vidal MDCC, Bal De Kier Joffé E. Characterization of F3ll, a sarcomatoid mammary carcinoma cell line originated from a clonal subpopulation of a mouse adenocarcinoma. *J Sur Oncol.* 1996;62(4):288–97. <http://plmenna.blog.unq.edu.ar/wp-content/uploads/sites/8/2013/03/Alonso-et-al.-1996.pdf>.
11. Workman P, Aboagye EO, Balkwill F, Balmain A, Bruder G, Chaplin DJ, et al. Guidelines for the welfare and use of animals in cancer research. *Br J Cancer.* 2010;102(11):1555–77. <https://doi.org/10.1038/sj.bjc.6605642>.
12. Miguez Santiyán MP, Largo Bermejo JD, Pérez López M. Perspectivas de la Experimentación Animal en Ciencias Biomédicas. Ed. Universidad de Extremadura. 2016:67–83. <http://hdl.handle.net/10662/4809>.
13. Álvarez C, Repetto G, del Peso A. Estrategias de identificación de planteamientos alternativos a la experimentación animal. *Rev Toxicol.* 2014;31(2):108–14. <http://www.redalyc.org/html/919/91932969002/>.
14. González MM, Joa JAG, Cabrales LEB, Pupo AEB, Schneider B, Kondakci S, et al. Is cancer a pure growth curve or does it follow a kinetics of dynamical structural transformation? *BMC Cancer.* 2017;17:174. <https://doi.org/10.1186/s12885-017-3159-y>.
15. Schaefer N, Schafer H, Maintz D, Wagner M, Overhaus M, Hoelscher AH, et al. Efficacy of direct electrical current therapy and laser-induced interstitial thermotherapy in local treatment of hepatic colorectal metastases: an experimental model in the rat. *J Surg Res.* 2008;146:230–40. <https://doi.org/10.1016/j.jss.2007.03.084>.
16. Perkons NR, Stein EJ, Nwaezeapu C, Wildenberg JC, Saleh K, Itkin-Ofer R, et al. Electrolytic ablation enables cancer cell targeting through pH modulation. *Commun Biol.* 2018;1(1):48. <https://doi.org/10.1038/s42003-018-0047-1>.
17. Calzado EM, Schinca H, Cabrales LEB, García FM, Turjanski P, Olaiz N. Impact of permeabilization and pH effects in the electrochemical treatment of tumors: experiments and simulation. *Appl Math Model.* 2019;74:62–72. <https://doi.org/10.1016/j.apm.2019.04.041>.
18. Soba A, Suarez C, González MM, Cabrales LEB, Pupo AEB, Reyes JB. Integrated analysis of the potential, electric field, temperature, pH and tissue damage generated by different electrode arrays in a tumor under electrochemical treatment. *Math Comput Simul.* 2018;146:160–76. <https://doi.org/10.1016/j.matcom.2017.11.006>.
19. Steel GG. Growth kinetics of tumors. Oxford: Clarendon Press; 1977.
20. Zhou BG, Wei CS, Zhang S, Zhang Z, Shen YJ, Wang J, et al. Electrochemotherapy inhibited breast cancer MDA-MB231 cell migration and invasion through PI3K/AKT signal pathway. *Int J Clin Exp Med.* 2016;9(9):18513–8. <http://www.ijcem.com/files/ijcem0022022.pdf>.
21. Rutter EM, Stepien TL, Anderies BJ, Plasencia JD, Woolf EC, Scheck AC, et al. Mathematical analysis of glioma growth in a murine model. *Sci Rep.* 2017;7:2508. <https://doi.org/10.1038/s41598-017-02462-0>.
22. Caswell DR, Swanton C. The role of tumour heterogeneity and clonal cooperativity in metastasis, immune evasion and clinical outcome. *BMC Med.* 2017;15(1):133. <https://doi.org/10.1186/s12916-017-0900-y>.
23. Rübber A, Araujo A. Cancer heterogeneity: converting a limitation into a source of biologic information. *J Transl Med.* 2017;15(1):190. <https://doi.org/10.1186/s12967-017-1290-9>.
24. Dagogo-Jack I, Shaw AT. Tumour heterogeneity and resistance to cancer therapies. *Nat Rev Clin Oncol.* 2018;15(2):81–94. <https://doi.org/10.1038/nrclinonc.2017.166>.
25. Queiroga AS, Morais MCC, Tortelli TC, Chammas R, Ramos AF. A stochastic spatial model for heterogeneity in cancer growth. *BioRxiv.* 2019. <https://doi.org/10.1101/584573>.
26. Kimura Y, Nagai N, Tsunekawa N, Sato-Matsushita M, Yoshimoto T, Cua DJ, et al. IL-17A-producing CD30+Vδ1 T cells drive inflammation-induced cancer progression. *Cancer Sci.* 2016. <https://doi.org/10.1111/cas.13005>.
27. Calzado EM, González MM, Delgado IG, Cabrales LEB, García FM. Potencial eléctrico, campo eléctrico, temperatura y pH en tumores y tejidos sanos circundantes generados por diferentes formas de arreglos de electrodos. *Rev Cub Quim.* 2018;30(1):104–18. <http://www.scielo.sld.cu/scielo.php>.
28. Phillips M, Rubinsky L, Meir A, Raju N, Rubinsky B. Combining electrolysis and electroporation for tissue ablation. *Technol Cancer Res Treat.* 2015;14(4):395–410. <https://doi.org/10.1177/1533034614560102>.
29. González MM, Aguilar CH, Pacheco FAD, Cabrales LEB, Reyes JB, Nava JGG, et al. Electrode arrays proposed for electrochemical treatment of tumors: assessment of their effects on potato pieces [*Solanum tuberosum* L.] as a biological model. *Front Oncol.* 2018;8(101):1–12. <https://doi.org/10.3389/fonc.2018.00101>.

## Publisher's Note

Springer Nature remains neutral with regard to jurisdictional claims in published maps and institutional affiliations.

Ready to submit your research? Choose BMC and benefit from:

- fast, convenient online submission
- thorough peer review by experienced researchers in your field
- rapid publication on acceptance
- support for research data, including large and complex data types
- gold Open Access which fosters wider collaboration and increased citations
- maximum visibility for your research: over 100M website views per year

At BMC, research is always in progress.

Learn more [biomedcentral.com/submissions](https://biomedcentral.com/submissions)

