





## ORIGINAL ARTICLE

Atopic Dermatitis, Urticaria and Skin Disease

# Component-resolved microarray analysis of IgE sensitization profiles to *Culicoides* recombinant allergens in horses with insect bite hypersensitivity

Ella N. Novotny<sup>1</sup> | Samuel J. White<sup>2,3</sup>  | A. Douglas Wilson<sup>4</sup>  | Sara B. Stefánsdóttir<sup>5</sup> | Edwin Tijhaar<sup>6</sup> | Sigrídur Jonsdóttir<sup>1</sup> | Rebekka Frey<sup>7</sup> | Dania Reiche<sup>8</sup> | Horst Rose<sup>8</sup> | Claudio Rhyner<sup>9</sup> | Gertraud Schüpbach-Regula<sup>1</sup> | Sigurbjörg Torsteinsdóttir<sup>5</sup>  | Marcos Alcocer<sup>3</sup> | Eliane Marti<sup>1</sup> 

<sup>1</sup>Department of Clinical Research and VPH, Vetsuisse Faculty, University of Bern, Bern, Switzerland

<sup>2</sup>School of Animal, Rural and Environmental Sciences, Nottingham Trent University, Brackenhurst Campus, Southwell, UK

<sup>3</sup>School of Biosciences, University of Nottingham, Loughborough, UK

<sup>4</sup>Division of Veterinary Pathology, Infection and Immunity, University of Bristol, Langford, UK

<sup>5</sup>Institute for Experimental Pathology, Biomedical Center, University of Iceland, Reykjavik, Iceland

<sup>6</sup>Cell Biology and Immunology Group, Wageningen University, Wageningen, The Netherlands

<sup>7</sup>AniCura Norsholms Djursjukhus, Norsholm, Sweden

<sup>8</sup>Boehringer Ingelheim Vetmedica GmbH, Rohrdorf, Germany

<sup>9</sup>Swiss Institute of Allergy and Asthma Research (SIAF), University of Zürich, Davos, Switzerland

**Correspondence**

Eliane Marti, Department of Clinical Research and VPH, Vetsuisse Faculty-University of Bern, Länggass-Str 124, 3012 Bern, Switzerland.  
Email: eliane.marti@vetsuisse.unibe.ch

**Funding information**

Schweizerischer Nationalfonds zur

**Abstract**

**Background:** Allergy to bites of blood-sucking insects, including biting midges, can affect both human and veterinary patients. Horses are often suffering from an IgE-mediated allergic dermatitis caused by bites of midges (*Culicoides* spp). With the aim to improve allergen immunotherapy (AIT), numerous *Culicoides* allergens have been produced as recombinant (r-) proteins. This study aimed to test a comprehensive panel of differently expressed *Culicoides* r-allergens on a cohort of IBH-affected and control horses using an allergen microarray.

**Methods:** IgE levels to 27 *Culicoides* r-allergens, including 8 previously unpublished allergens, of which 11 were expressed in more than one expression system, were determined in sera from 347 horses. ROC analyses were carried out, cut-offs selected using a specificity of 95% and seropositivity rates compared between horses affected with insect bite hypersensitivity (IBH) and control horses. The combination of r-allergens giving the best performing test was determined using logistic regression analysis.

**Results:** Seropositivity was significantly higher in IBH horses compared with controls for 25 r-allergens. Nine *Culicoides* r-allergens were major allergens for IBH with seven of them binding IgE in sera from > 70% of the IBH-affected horses. Combination of these top seven r-allergens could diagnose > 90% of IBH-affected horses with a specificity of > 95%. Correlation between differently expressed r-allergens was usually high (mean = 0.69, range: 0.28-0.91).

**Conclusion:** This microarray will be a powerful tool for the development of component-resolved, patient-tailored AIT for IBH and could be useful for the study of allergy to biting midges in humans and other species.

**Abbreviations:** IBH, equine insect bite hypersensitivity; r-allergen/protein, recombinant allergen/protein.

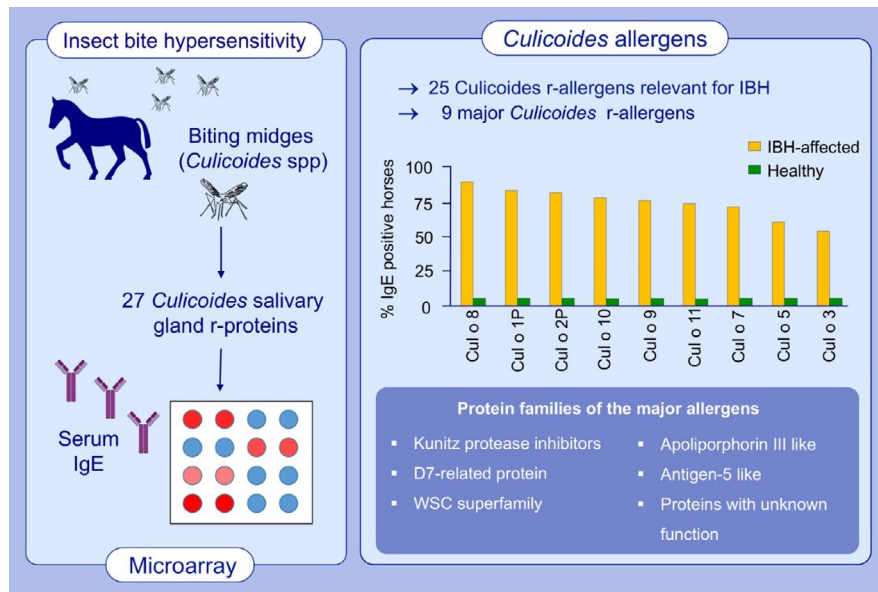
This is an open access article under the terms of the Creative Commons Attribution-NonCommercial License, which permits use, distribution and reproduction in any medium, provided the original work is properly cited and is not used for commercial purposes.

© 2020 The Authors. *Allergy* published by European Academy of Allergy and Clinical Immunology and John Wiley & Sons Ltd.

Förderung der Wissenschaftlichen Forschung, Grant/Award Number: 310030-160196/1; Morris Animal Foundation, Grant/Award Number: D16EQ-039; Stiftung Forschung für das Pferd; Icelandic Research Fund, Grant/Award Number: 141071-05; University of Iceland Research Fund

## KEYWORDS

culicoides allergens, equine insect bite hypersensitivity, IgE, microarray



## GRAPHICAL ABSTRACT

In this study, we identify and produce eight new *Culicoides* r-allergens, Cul o 8 to Cul o 15. Out of 27 tested *Culicoides* r-allergens, nine are major allergens for IBH and seven bind serum IgE in > 70% of the IBH-affected horses. Combination of these seven r-allergens could diagnose > 90% of IBH horses with a specificity > 95%.

Abbreviations: IBH, equine insect bite hypersensitivity; r-allergen/protein, recombinant allergen/protein.

## 1 | INTRODUCTION

Allergy to biting insects, including biting midges, is affecting both human and veterinary patients.<sup>1</sup> Insect bite hypersensitivity (IBH) is a seasonally recurrent, strongly pruritic allergic dermatitis<sup>2-4</sup> of horses caused by biting midges of the genus *Culicoides* and is thus also increasingly named *Culicoides* hypersensitivity (CH). IBH occurs nearly worldwide with a prevalence of 3% to 60%, depending on breed, family and environment.<sup>5</sup> IBH is not affecting horses in Iceland because of the absence of the causative *Culicoides* spp. However, horses imported as adults from Iceland to *Culicoides*-rich environments, for example, in mainland Europe, have a high prevalence of IBH (>50%), while the prevalence of IBH in horses of the Icelandic breed born in mainland Europe is only 8%-10% as reviewed in.<sup>5</sup> The *Culicoides* (*C.*) species causing IBH can vary depending on the geographical location: *C. obsoletus* (Cul o) is the most common species found around horses in both North America and Europe.<sup>6,7</sup> *C. nubeculosus* (Cul n) is found rather rarely in European countries<sup>8</sup> but can be bred under laboratory conditions.<sup>9</sup> IBH is characterized by type I, IgE-mediated reactions (reviewed in Ref. [5,10]) to salivary gland proteins from *Culicoides* spp.<sup>11-13</sup> IgE antibodies binding to the natural allergens<sup>8,14,15</sup> as well as to *Culicoides* recombinant (r-) allergens<sup>16-18</sup> have been demonstrated in

sera of IBH-affected horses. Histamine and sulfidoleukotriene release assay with *Culicoides* allergens<sup>19-21</sup> further support type I reactions in IBH, usually followed by a late-phase reaction.<sup>22-24</sup>

Development of specific and sensitive diagnostic tests as well as of an efficacious allergen immunotherapy (AIT) for IBH has been hampered by the lack of pure *Culicoides* allergens. The use of *Culicoides* whole-body extracts (WBEs) usually leads to low specificity and sensitivity of serological tests<sup>25-29</sup> and to low efficacy of AIT.<sup>30,31</sup> While a recent study showed a better performance of IgE serology using a WBE from *Culicoides obsoletus* captured individually from horses in the field,<sup>32</sup> this collection is very laborious and does not allow for standardization of the extract.<sup>33</sup> *C. obsoletus* cannot be bred under laboratory conditions.<sup>9</sup> IBH-affected horses also react to *Culicoides* species not present in the environment of the horses indicating the presence of cross-reactivity between allergens of *Culicoides* species.<sup>34</sup> Indeed, some allergens derived from different *Culicoides* species display high similarities (>70%) of the amino acid sequences,<sup>18</sup> while others do not. Consequently, various studies aiming at the characterization of *Culicoides* salivary proteins have been performed<sup>8,35</sup> and have resulted in the production of over 20 *Culicoides* r-allergens, derived from *C. nubeculosus*,<sup>5,17</sup> *C. obsoletus*<sup>16,18</sup> and *C. sonorensis*.<sup>27</sup> The majority of the *Culicoides* r-allergens have been produced in *E. coli*, and few in insect

cells or barley.<sup>18,27,36</sup> A first study using a microarray including a limited panel of ten *C nubeculosus* and two *C obsoletus* r-allergens suggested a highly discriminatory potential for this technique. It showed that horses with IBH have a high probability of being classified separately from those affected with other allergic disease and from healthy control horses, suggesting that this approach is worth being refined for studying the sensitization pattern to *Culicoides* r-allergens in IBH.<sup>37</sup>

Using a large, comprehensive panel of *Culicoides* r-allergens printed on a microarray, the aim of the study was to determine which of these *Culicoides* r-allergens are most important for IBH and should be lead compounds for AIT and be included in diagnostic tests for IBH. A further aim was to compare IgE binding to r-allergens produced in different expression systems.

## 2 | MATERIALS AND METHODS

### 2.1 | Horses

Sera from 347 horses, 148 healthy controls and 199 IBH-affected horses were tested for allergen-specific IgE (Table 1). The serum samples came from five different countries and were collected during the IBH seasons in the years 2005 to 2017. All horses with IBH showed the typical, seasonally recurrent clinical signs,<sup>5</sup> while the healthy control horses (H), all living in the same environments as the IBH horses, had no clinical signs or history of skin diseases. Additionally, in the Swiss horses, clinical diagnosis of IBH had been confirmed in an in vitro sulfidoleukotriene release assay with *Culicoides* allergens.<sup>20,38</sup> The horses belonged to different breeds with a predominance of the Icelandic breed (Table 1). All IBH-affected Icelandic horses had been imported from Iceland as well as 89 of the 115 H Icelandic horses. The study was approved by the Animal Experimental Committee of the Canton of Berne, Switzerland (No. BE 121/05 and BE 2/17), and by an ethics committee and the State Office for Consumer Protection and Food Safety in accordance with the German Animal Welfare Law (LAVES—Reference Number: 33.14 42502-04-14/1718).

### 2.2 | New recombinant *Culicoides* allergens

Eight previously unpublished proteins from *C obsoletus* were included on the array. Their sequences were derived from cDNA synthesized using wild *C obsoletus* salivary glands prepared as described.<sup>35</sup> The

cDNA was analysed by next-generation sequencing at the University of Bristol Genomics Facility, using ion proton sequencing. The data were assembled into full-length mRNA using the de novo assembly software “Trinity” and the University of Bristol Supercomputing Facility, BlueCrystal. They were named and numbered according to the allergen nomenclature (allergen.org), Cul o 8 to Cul o 15 (Table 2). The sequences were codon-optimized for expression in *E coli*, synthesized and cloned into pET100/D-TOPO (GeneArt® Gene Synthesis, Thermo Fisher). Proteins were expressed in *E coli* BL21(DE3) grown either in 100 mL of AIM (auto-induction medium super broth, www.formedium.com) for 18 hours,<sup>39</sup> or overnight in Cinnabar medium (www.teknova.com) with 100 µmol/L IPTG (isopropyl β-D-1-thiogalactopyranoside) added for a further 4 hours of culture before harvest. The culture was centrifuged at 8000 × g for 5 minutes at 4°C. To reduce LPS content, the pellet was washed with 100 mmol/L Tris (pH 8.0), followed by 100 mmol/L Tris (pH 8.0), 5 mmol/L CaCl<sub>2</sub> and then 100 mmol/L Tris (pH 8.0), and 10 mmol/L EDTA. The wash cycle was repeated with each buffer with two final washes in 100 mmol Tris to remove EDTA before freezing at -20°C.<sup>40</sup> After thawing, the pellet was resuspended in NZY lysis buffer with lysozyme, DNase (www.nzytech.com) and protease inhibitor cocktail (cComplete Tablets, Roche) and incubated at RT for 1 hour before centrifugation at 16.000 × g for 10 minutes at 4°C. The pelleted inclusion bodies were washed with Tris buffer containing Triton X-114 for LPS removal according to Choi et al<sup>40</sup> and then resuspended in 50 mmol/L Tris (pH 8.0), 500 mmol/L NaCl, 20 mmol/L imidazole, 8 mol/L urea, 5 mmol/L TECP and rocket O/N at RT subsequently centrifuged at 16.000 × g and the supernatant harvested. The supernatant was applied to Ni-Sepharose™ 6 Fast Flow (GE Healthcare) for purification of His-tagged proteins according to manufacturer's procedures. After elution, the proteins were refolded in 400 mmol/L Arginine-HCL, 20 mmol/L Tris, pH 8, 500 mmol/L NaCl, 5 mmol/L b-cyclodextrin 100 mmol/L glycerol, 340 mmol/L imidazole, 0.2 mmol/L oxidized glutathione and 2 mmol/L reduced glutathione.

### 2.3 | Allergens used in the study

The allergens used included a total of 27 *Culicoides* r-allergen: eleven *C nubeculosus* (Cul n,<sup>17,41</sup> eight already published *C obsoletus* r-proteins (Cul o<sup>16,18</sup>) and the eight new *C obsoletus* r-allergens (Table 2). The allergens had been expressed not only in *E coli* as described<sup>17,18,41</sup> but also in barley, insect cells<sup>36</sup> and yeast (*Pichia*

**TABLE 1** Origin of the horses affected with insect bite hypersensitivity (IBH) and of the healthy control (H) horses used for the determination of allergen-specific serum IgE on the microarray. A total of 347 horses were included, of which 235 horses belonged to the Icelandic breed. The other 112 horses belonged to various breeds

Country	Icelandic horses		Other breeds		All breeds		Total
	H	IBH	H	IBH	H	IBH	
Switzerland (CH)	67	59	22	25	89	84	173
Germany (DE)	11	5	—	5	11	10	21
Sweden (SE) <sup>26</sup>	37	56	—	—	37	56	93
Ireland (IRL)	—	—	11	21	11	21	32
United Kingdom (UK)	—	—	—	28	—	28	28
Total	115	120	33	79	148	199	347

**TABLE 2** *Culicoides nubeculosus* (Cul n) and *Culicoides obsoletus* (Cul o) recombinant allergens produced in *E coli* (coli), baculovirus-infected insect cells (Baculo), yeast (*Pichia*) or barley. In a part of the analyses, only one expression system was chosen per allergen (in bold). Additionally, Cul n thorax extract (CN-TE), Cul o group whole-body extract (CO-WBE) and *Simulium vittatum* whole-body extract (SV-WBE) were used. *Alternaria alternate* 1 (alt a 1) and *Dermatophagoides farinae* (Der f) were used as control antigens, not relevant for IBH

Name	Expression system	Protein family	GenBank	Reference
Cul n 1	<b>Baculo</b>	PR1-like (antigen-5 like)	EU978899	Schaffartzik et al (2010)
Cul n 2	<b>Baculo, Coli</b>	Hyaluronidase	HM145950	Schaffartzik et al (2011)
Cul n 3	<b>Baculo, Coli, Barley</b>	DUF4803 superfamily <sup>a</sup>	HM145951.1	Schaffartzik et al (2011); Jonsdottir et al (2018)
Cul n 4	Baculo, Coli, <b>Barley, Pichia</b>	Unknown	HM145952	Schaffartzik et al (2011); Jonsdottir et al (2018)
Cul n 5	<b>Coli</b>	DUF4803 superfamily	HM145953	Schaffartzik et al (2011)
Cul n 6	<b>Coli</b>	Unknown	HM145954	Schaffartzik et al (2011)
Cul n 7	<b>Coli</b>	Unknown	HM145955	Schaffartzik et al (2011)
Cul n 8	<b>Baculo, Coli, Pichia</b>	Maltase (alpha amylase)	HM145956	Schaffartzik et al (2011)
Cul n 9	<b>Coli</b>	D7-related/OBP	HM145957	Schaffartzik et al (2011)
Cul n 10	<b>Coli</b>	DUF4803 superfamily	HM145958	Schaffartzik et al (2011)
Cul n 11	<b>Coli</b>	Serine protease/trypsin	HM145959	Schaffartzik et al (2011)
Cul o 1P	<b>Coli</b>	Kunitz protease inhibitor	JX512273	Peeters et al (2013)
Cul o 2	<b>Baculo, Pichia</b>	Hyaluronidase	KC339672	Van der Meide et al (2013)
Cul o 2P	Baculo, <b>Coli</b>	D7-related/OBP	JX512274	Peeters et al (2013)
Cul o 3	Baculo, <b>Coli, Pichia</b>	PR1-like (antigen-5 like)	KC339673	Van der Meide et al (2013)
Cul o 3P	<b>Coli</b>	D7-related/OBP	JX512275	Not published
Cul o 5	Baculo, <b>Coli</b>	Unknown	KC339675	Van der Meide et al (2013)
Cul o 6	Coli, <b>Pichia</b>	D7-related/ OBP	KC339676	Van der Meide et al (2013)
Cul o 7	<b>Baculo, Coli, Pichia</b>	Unknown	KC339677	Van der Meide et al (2013)
Cul o 8	<b>Coli</b>	Kunitz protease inhibitor	MN123710	New, clone CO145
Cul o 9	<b>Coli</b>	WSC superfamily, carbohydrate-binding domain	MN123712	New, clone CO120
Cul o 10	<b>Coli</b>	DUF4803 superfamily	MN123711	New, clone CO180
Cul o 11	<b>Coli</b>	Apolipoprotein III-like	MN123713	New, clone CO167
Cul o 12	<b>Coli</b>	Leucine-rich repeat	MN123714	New, clone CO15
Cul o 13	<b>Coli</b>	D7-related/OBP	MN123715	New, clone CO13
Cul o 14	<b>Coli</b>	Serine protease/trypsin	MN123716	New, clone CO60
Cul o 15	<b>Coli, Baculo</b>	Apyrase	MN123717	New, clone CO147
CN-TE	<b>Extract</b>			Ziegler et al (2018)
SV-WBE	<b>Extract</b>			Torsteinsdottir et al (2018)
CO-WBE	<b>Extract</b>			
Alt a 1	<b>Coli</b>			Biomay
Der f	<b>Extract</b>			Stallergenes Greer

<sup>a</sup>Domain of unknown function.

*pastoris*, VALIDOGEN GMBH (formerly VTU Technology), Grambach, AT),<sup>42</sup> resulting in a total of 44 *Culicoides* r-proteins included on the array (Table 2 and Table S1).

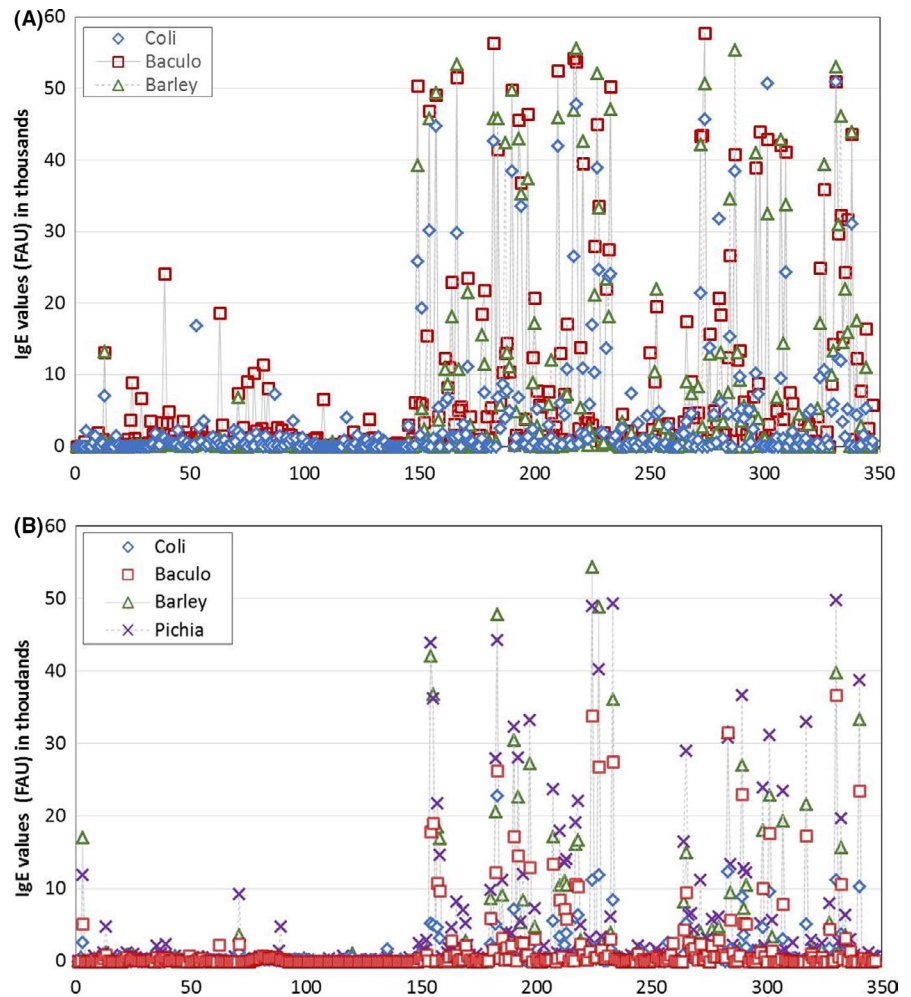
Additionally, a Cul n thorax extract (CN-TE)<sup>43</sup> and a whole-body extract from Cul o group midges (CO-WBE)<sup>16</sup> as well as a black fly extract (*Simulium vittatum* [SV-WBE])<sup>44</sup> were used. As negative control antigens, the recombinant mould allergen *Alternaria alternate* 1 (Alt a 1, Biomay, www.biomay.com) and a house dust mite extract (*Dermatophagoides farinae* [Der f], Stallergenes Greer, www.stallergen.esgreer.com) were also assessed (Table 2).

## 2.4 | Serum IgE testing by protein microarray

IgE serum determination by protein microarray was performed as described.<sup>45</sup> All serum samples had been kept frozen until used and were tested in the same period, within few months.

Briefly, all proteins and extracts were normalized to 0.5 µg/mL protein before being printed onto Grace Bio-Labs Oncoyte<sup>®</sup> Nova<sup>™</sup> nitrocellulose film slides using a Marathon microarrayer (Arrayjet, Roslin, Scotland). The slides were blocked with 3% BSA in PBS for 3h with rotation at 37°C. Slides were subsequently washed in 0.05%

**FIGURE 1** Comparison of IgE values in fluorescence arbitrary units (FAU) to recombinant allergens expressed in different expression systems, exemplified for Cul n 3 (A) and Cul n 4 (B). Every peak shows the IgE values of one horse on the allergen expressed in insect cells (Baculo; red square), in barley (green triangle), *E coli* (Coli; blue rhomboid) and *Pichia pastoris* (Pichia; violet cross; only Cul n 4). IgE values of the 148 healthy control horses are represented on the left side and of the 199 IBH-affected horses on the right side of the abscissa



PBS-T followed by washes with Milli-Q water (Millipore) before being dried via centrifugation at  $300 \times g$  for 10 minutes. Slides were fitted with ProPlate slide modules (Grace Bio-Labs), and the 16 nitrocellulose wells on the slide were washed three times with  $150 \mu\text{L}/\text{well}$  0.2% PBS-T. The sera diluted 1:2 in 4% BSA-0.4% PBS-T were applied to each well ( $100 \mu\text{L}/\text{well}$ ), except for one used as blank (0.2% PBS-T). These slides were incubated O/N at  $4^\circ\text{C}$  at 13 oscillations/min (Stuart SSL4 See-saw Rocker). After washing with 0.05% PBS-T, anti-horse IgE mAb 3H10<sup>46</sup> diluted 1:400 in 0.2% PBS-T and 1% BSA was added ( $100 \mu\text{L}/\text{well}$ ) and incubated at  $37^\circ\text{C}$  for 2 hours. After washing with 0.05% PBS-T, DyLight 649-conjugated anti-mouse IgG1 (Rockland, #610-443-040) was applied at dilution 1:400 in 0.2% PBS-T and 1% BSA. After final washes, the slides were dried by centrifugation. The pads were scanned in a GenePix4000B (Molecular Devices, Inc). The mean of the blanks with each allergen was subtracted from the values obtained with the serum samples before further analyses of the data. Data were presented as fluorescence arbitrary unit (FAU).

## 2.5 | Data analysis

For statistical analysis, NCSS software (NCSS 12 Statistical Software (2018), NCSS, LLC; [ncss.com/software/ncss](http://ncss.com/software/ncss)) was used. Since the

data were not normally distributed, descriptive statistics using median and ranges and the Mann-Whitney U test to compare IgE values between IBH-affected and H control horses were performed.

In a second step, the capacity of the single allergens to discriminate IBH-affected from H horses was investigated by receiver operator characteristic (ROC) curves, with the accuracy of the test represented by the area under the curve (AUC).

Spearman rank correlation was used to compare IgE levels of r-allergens expressed in different expression systems.

When the same r-allergens were produced in different expression systems, one of them was chosen for further analyses: r-allergens with the best AUC were selected, and when the AUCs were similar, dot plot graphs helped to select the allergen giving the best separation between the IBH-affected and control group (not shown).

ROC curves were used to select the optimal cut-off values. As cut-off, values giving at least a specificity of 94% at the highest accuracy possible were selected. For each allergen, specific IgE values were then transformed in positive and negative (above and below cut-off level) results. The 2-sided Fisher's exact test was used to compare the proportion of IBH-affected and control horses with positive allergen-specific IgE results or to compare the proportion of positive results between Icelandic (ISL) and other breeds within IBH-affected or H horses.



**TABLE 3** Spearman's correlations per allergen between the proteins expressed using different expression systems: *E coli* (coli), baculovirus-infected insect cells (Baculo), barley and yeast (*Pichia*). All correlations were significant ( $P < .001$ )

Allergen	Correlation Matrix	Correlation		
		Baculo	Barley	Pichia
Cul n 2	Coli	0.50	n.a. <sup>a</sup>	n.a.
Cul n 3	Coli	0.63	0.73	n.a.
	Baculo	1.00	0.80	n.a.
Cul n 4	Coli	0.75	0.74	0.71
	Baculo	1.00	0.91	0.86
	Barley	0.91	1.00	0.89
Cul n 8	Coli	0.52	n.a.	0.89
	Baculo	1.00	n.a.	0.48
Cul o 2	Baculo	1.00	n.a.	0.28
Cul o 2P	Coli	0.78	n.a.	n.a.
Cul o 3	Coli	0.70	n.a.	0.66
	Baculo	1.00	n.a.	0.76
Cul o 5	Coli	0.75	n.a.	n.a.
Cul o 6	Coli	n.a.	n.a.	0.38
Cul o 7	Coli	0.88	n.a.	0.76
	Baculo	1.00	n.a.	0.74
Cul o 15	Coli	0.32	n.a.	n.a.

<sup>a</sup>Not applicable.

To determine which combination of r-allergens would result in the best sensitivity and specificity, multivariable logistic regression analyses were performed with IBH status as the outcome and seropositivity to the different allergens as potential predictors. The model was built in a stepwise forward selection process, with the r-allergen with the best AUC entering the model first, followed by the allergen with the next best value. Inclusion of allergens was stopped after adding new allergens did not result in an improvement of sensitivity and specificity.

### 3 | RESULTS

#### 3.1 | Comparison and selection of allergens produced in different expression systems

A total of 27 different *Culicoides* r-allergens, some of which were expressed in different expression systems, resulting in a total of 44 r-allergens, were analysed in this study. Median serum IgE values of IBH-affected and control horses and AUCs for each of these allergens are shown in Table S1. The horses usually displayed similar IgE reactivity patterns to the same r-allergen produced in the different expression systems (shown for Cul n 3 and Cul n 4 in Figure 1A,B), although insect cell-expressed Cul n 3 bound serum IgE from H horses more frequently than Cul n 3 expressed in the other systems. IgE levels to the same allergen expressed in various systems usually

correlated rather well ( $R: 0.63-0.91$ ,  $P < .001$ ), with few exceptions, as shown in Table 3.

#### 3.2 | Allergen-specific IgE levels in IBH-affected and control horses

Comparison of allergen-specific IgE levels between IBH-affected and H control horses was first performed country-wise by ROC curves and Mann-Whitney U test. The AUCs were statistically significant for all 27 recombinant *Culicoides* allergens in the horses from Switzerland (CH) and almost all r-allergens in the horses from Sweden (SE: 25/27 r-allergens), Ireland (IRL: 24/ 27 r-allergens) and Germany (DE: 26/ 27 r-allergens) (Table S2). Interestingly, the horses from Germany displayed higher AUC for most *Culicoides* r-allergens and in particular for the Cul n allergens compared with the horses from the other countries (Table S2).

The IgE-binding capacity of the allergens printed on the microarray varied greatly between allergens (Table 4), with allergens showing low values such as Cul n 2 or Cul n 5, while some other allergens gave a very strong signal with sera from IBH-affected horses, such as Cul o 1P and Cul o 8. For some of these allergens, IgE binding in the control sera was also higher. Irrespective of these differences between allergens, significant differences for median IgE levels between IBH-affected and control horses were found for all tested *Culicoides* allergens, except Cul n 7. Further analysis using ROC curves revealed that in our study population, some allergens had a very good performance to discriminate IBH-affected from H control horses with  $AUC > 0.90$ . This was the case for the six Cul o allergens, Cul o 1P, Cul o 2P, Cul o 8, Cul o 9, Cul o 11 and Cul o 10. AUC values between 0.80 and 0.90 were obtained for five *Culicoides* r-allergens (Cul o 3, Cul o 5, Cul o 7, Cul o 12, Cul o 13) as well as for the two *Culicoides* extracts.

#### 3.3 | Analysis of the data after cut-off definition

For further analysis, the IgE results were grouped in positive or negative test results based on the cut-off value chosen at a specificity  $\geq 94\%$  (Table 4). Cut-offs selected based on Youden's index, that is, when the sum of the sensitivity and specificity is maximized, are shown in Table S3. For the three Cul o r-allergens, Cul o 1P, Cul o 8 and Cul o 10, the same cut-off values as when using a specificity  $> 94\%$  were selected based on Youden's index. For the other r-allergens, the cut-off values were usually lower, resulting in an increased sensitivity with some loss of specificity. Comparison of the number of positive IgE reactions between IBH-affected and H control horses in Fisher's exact test revealed significant differences for all *Culicoides* r-allergens, except for Cul n 7 and Cul n 8. Figure 2 shows that the allergens Cul o 8, Cul o 1P and Cul o 2P bound serum IgE in  $> 80\%$  of the IBH-affected horses followed by Cul o 10, Cul o 9, Cul o 11 and Cul o 7 with  $> 70\%$  positive reactions. The allergens Cul o 5 and Cul o 3 bound IgE in  $> 50\%$  of the allergic horse sera. The remaining r-allergens gave less frequently positive reactions in the

**TABLE 4** Overview of allergen-specific IgE determined with a protein microarray in sera from 199 horses affected with insect bite hypersensitivity (IBH) and 148 healthy control (H) horses. Median serum IgE values (in fluorescence arbitrary unit) from H and IBH-affected horses and *P* values from the Mann-Whitney U test. Results from ROC analyses are as well-listed: pairwise accuracy (AUC) with lower and upper confidence limits, cut-off values selected to obtain a specificity  $\geq$  95% (CO-WBE 94%) and the resulting sensitivities (sens.)

Allergens	H	IBH	<i>P</i>	AUC	95% confidence limits		Cut-off	Sens.
	Median	Median	H vs IBH		Lower	Upper		
Cul n 1	44	859	<.001	0.74	0.69	0.79	2500	0.30
Cul n 2	0	106	<.001	0.71	0.66	0.76	230	0.37
Cul n 3	605	4038	<.001	0.79	0.74	0.84	7500	0.38
Cul n 4	0	588	<.001	0.79	0.74	0.83	820	0.42
Cul n 5	1	82	<.001	0.77	0.72	0.81	108	0.43
Cul n 6	0	280	<.001	0.70	0.64	0.74	800	0.28
Cul n 7	131	201	n.s. <sup>a</sup>	0.54	0.48	0.60	2200	0.07
Cul n 8	678	1089	<.001	0.62	0.56	0.68	3950	0.12
Cul n 9	393	1141	<.001	0.74	0.68	0.78	2400	0.31
Cul n 10	307	858	<.001	0.67	0.61	0.72	3500	0.20
Cul n 11	0	239	<.001	0.64	0.58	0.69	1500	0.26
<b>Cul o 1P</b>	<b>603</b>	<b>43 478</b>	<b>&lt;.001</b>	<b>0.94</b>	<b>0.90</b>	<b>0.96</b>	<b>7300</b>	<b>0.83</b>
Cul o 2	7	77	<.001	0.73	0.67	0.77	150	0.34
<b>Cul o 2P</b>	<b>5</b>	<b>1549</b>	<b>&lt;.001</b>	<b>0.94</b>	<b>0.91</b>	<b>0.96</b>	<b>300</b>	<b>0.82</b>
Cul o 3	193	1259	<.001	0.88	0.83	0.91	1070	0.54
Cul o 3P	0	522	<.001	0.75	0.70	0.80	870	0.37
Cul o 5	1249	7766	<.001	0.85	0.80	0.88	6000	0.60
Cul o 6	17	164	<.001	0.79	0.74	0.83	238	0.41
<b>Cul o 7</b>	<b>149</b>	<b>2854</b>	<b>&lt;.001</b>	<b>0.88</b>	<b>0.84</b>	<b>0.91</b>	<b>900</b>	<b>0.71</b>
<b>Cul o 8</b>	<b>947</b>	<b>44 986</b>	<b>&lt;.001</b>	<b>0.95</b>	<b>0.92</b>	<b>0.97</b>	<b>16 000</b>	<b>0.89</b>
<b>Cul o 9</b>	<b>37</b>	<b>19 070</b>	<b>&lt;.001</b>	<b>0.92</b>	<b>0.89</b>	<b>0.95</b>	<b>1800</b>	<b>0.76</b>
<b>Cul o 10</b>	<b>0</b>	<b>6502</b>	<b>&lt;.001</b>	<b>0.91</b>	<b>0.88</b>	<b>0.94</b>	<b>700</b>	<b>0.77</b>
<b>Cul o 11</b>	<b>3658</b>	<b>32 043</b>	<b>&lt;.001</b>	<b>0.91</b>	<b>0.88</b>	<b>0.94</b>	<b>11 000</b>	<b>0.74</b>
Cul o 12	0	480	<.001	0.85	0.80	0.88	488	0.49
Cul o 13	804	3981	<.001	0.84	0.79	0.88	5600	0.42
Cul o 14	0	68	<.001	0.71	0.65	0.76	160	0.36
Cul o 15	53	171	<.001	0.81	0.77	0.85	1100	0.14
CN-TE	216	940	<.001	0.81	0.76	0.85	1150	0.42
CO-WBE	261	1503	<.001	0.84	0.79	0.87	1550	0.48
SV-WBE	254	598	<.001	0.71	0.65	0.76	1800	0.12
Alt a 1	20	18	n.s.	0.50	0.44	0.55	300	0.07
Der f	518	519	n.s.	0.52	0.45	0.58	3700	0.09

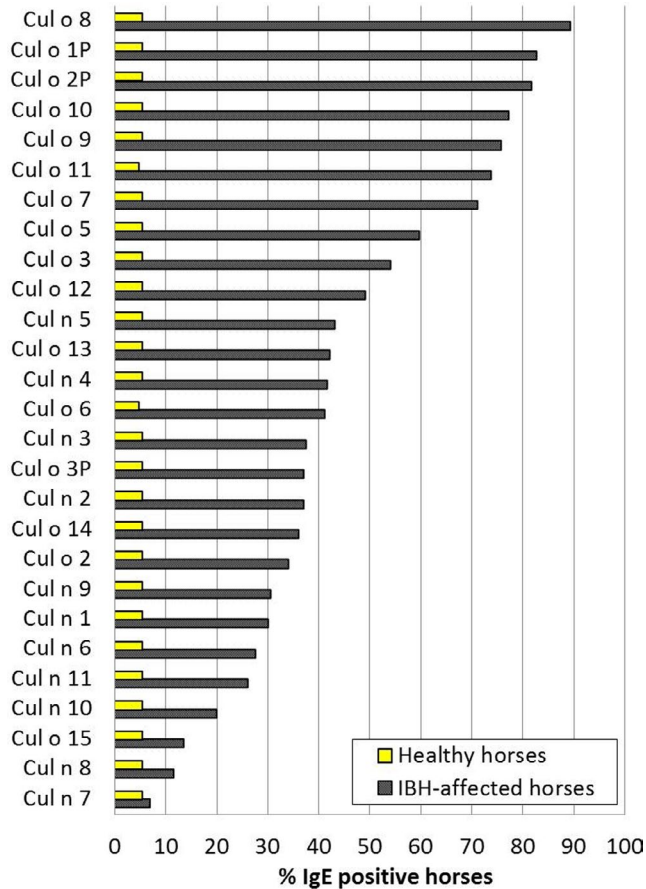
Note: Bold indicates the seven top *Culicoides* r-allergens.

<sup>a</sup>Not significant ( $P > .05$ ).

IBH-affected group, with values ranging between 42% (Cul o 13) and 14% (Cul o 15). With the cut-offs selected to achieve a high specificity (>94%), the percentage of IBH-affected horses with positive IgE levels to the *Culicoides* extracts was below 50% (CO-WBE 48%, CN-TH 42%) and was negligible with SV-WBE (12%). In Figure S1, the data of IBH-affected horses are shown for each country. While there are differences in the percentages of positive IgE reactions to the different allergens between the countries, this figure also confirms that the seven top allergens from Figure 2 are major allergens for IBH in all countries (except for Cul o 7 in England and Ireland).

### 3.4 | IgE reactions to the r-*Culicoides* allergens in Icelandic horses compared with other breeds

Comparison of the IgE results in the sera from the IBH-affected horses belonging to the ISL breed to other breeds shows that ISL horses have significantly more often positive reactions than the horses from other breeds. This was performed for the horses living in Switzerland only, as there was often an overlap between breed and country (Table 1). The difference was significant for 14 r-allergens ( $P \leq .05$ ). Nevertheless, the IgE results were very similar between ISL



**FIGURE 2** IgE levels to 27 recombinant *Culicoides* allergens. Percentage of horses with IgE levels above the cut-off values (as indicated in Table 4) in 199 IBH-affected and 148 healthy horses. The allergens are listed in decreasing order from those binding serum IgE in the highest number of IBH-affected horses. P values were calculated with Fisher's exact tests. The differences between healthy and IBH-affected horses were all significant ( $P < .05$ ) except for Cul n 7 and Cul n 8

and other breeds for the top five allergens Cul o 8, Cul o 1P, Cul o 2P, Cul o 10 and Cul o 9 (Figure 3). Interestingly, IBH-affected ISL horses living in Switzerland or in Sweden, that is in different environments, showed very similar sensitization patterns (Figure S2). There were no significant differences between the breeds in the H control horses.

### 3.5 | Selection of the best combination of allergens for diagnosis of IBH

In the multivariate logistic regression model, combination of the three best performing r-allergens, Cul o 8, Cul o 1P and Cul o 2P, resulted in a sensitivity of 90% with a specificity of 94%. Addition of the next four top allergens Cul o 10, Cul o 9, Cul o 11 and Cul o 7 further increased the performance of the assay, resulting in a sensitivity of 90% and specificity of 96% (AUC = 0.957, 95% confidence interval: 0.899 to 0.982). Country-wise analysis was performed for CH, SE, IRL and DE and showed that using this combination of seven

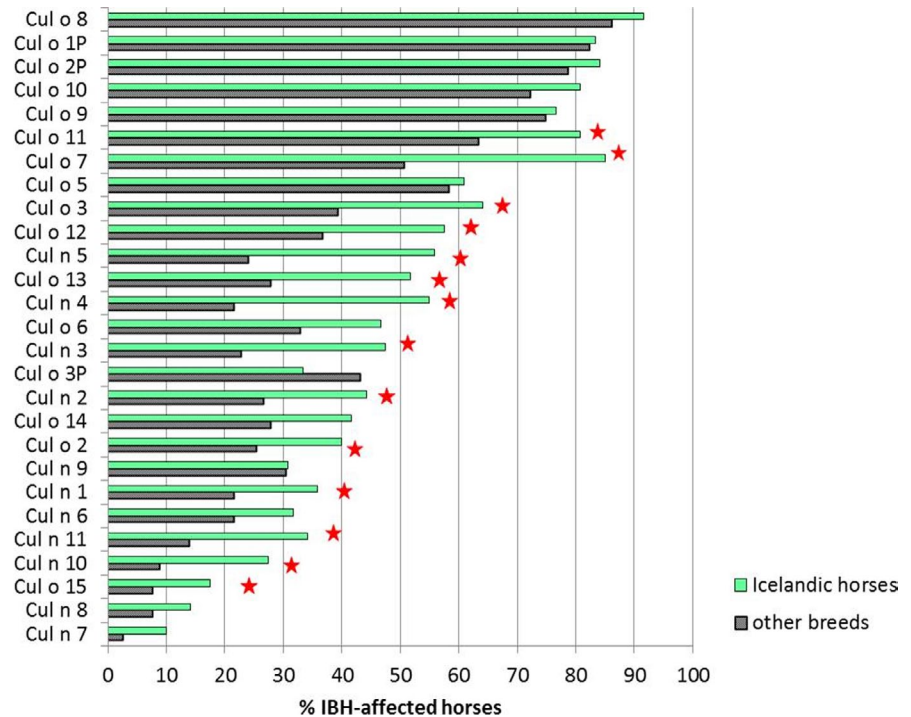
allergens also resulted in high sensitivities (92% to 100%) and specificities (97% to 100%) within these countries.

## 4 | DISCUSSION

Our aim was to test a most complete panel of all *Culicoides* r-allergens available using a newly developed microarray for IgE serology.<sup>37,47</sup> A total of 27 different Cul r-allergens of which eight were new allergens were thus analysed in this study. A first country-wise analysis of the results using AUCs indicated that nearly all tested r-allergens were relevant for IBH, independently of the country of origin of the horses, while AUCs for the control allergens were nonsignificant. Horses from Germany reacted more often with Cul n r-allergens than horses living in other countries. This might be due to a higher presence of *C nubeculosus* in this geographical area. However, as this group only consisted of 10 IBH-affected horses, larger numbers of horses will need to be tested in the future to define the sensitization pattern in horses from Germany. Ideally, *Culicoides* species should also be determined in the environments where the horses have been sampled. Horses from all countries were then pooled for an overall analysis. After ROC analysis and cut-off determination, seven r-allergens of *Culicoides obsoletus* group midges (Cul o 8, Cul o 1P, Cul o 2P, Cul o 10, Cul o 9, Cul o 11 and Cul o 7) were identified as the most relevant allergens for IBH, as between 74% and 89% of the IBH-affected horses had positive IgE values against these r-allergens. The specificity was high, as only 5% of the H horses had IgE above the cut-off values. Supporting earlier findings by van der Meide et al,<sup>18</sup> the best performing r-allergens were all derived from *Culicoides obsoletus* and not *Culicoides nubeculosus*, showing the importance to test horses against the native and most frequent *Culicoides* spp. from their environment. *Culicoides obsoletus* group midges are the most commonly found species in Switzerland,<sup>48</sup> Ireland,<sup>49</sup> England,<sup>8</sup> Germany<sup>50</sup> and Sweden.<sup>51</sup> Consideration of the results from each country separately shows that the *Culicoides* r-allergens Cul o 8, Cul o 1P, Cul o 2P, Cul o 10, Cul o 9 and Cul o 11 are major allergens for all tested horses independently of their origin or breed. Cul o 1P and Cul o 2P already showed good results for differentiation between IBH-affected and H horses in Belgian Warmblood horses,<sup>16</sup> but in that study no further r-Cul o allergens had been tested. Interestingly, the Irish group seems to be more often sensitized to Cul o3P, Cul o2P and Cul n 9 all belong to the D7 protein family, than the other horse groups. Comparison of the IgE results in IBH-affected horses from the ISL breed to those from other breeds shows that both groups are sensitized to a similar extend to the top r-allergens Cul o 8, Cul o 1P, Cul o 2P, Cul o 9 and Cul o 10. However, horses of the ISL breed have significantly more often positive IgE results to other r-allergens than non-Icelandic horses. This suggests that imported Icelandic horses developing IBH in Europe are sensitized to more *Culicoides* r-allergens than horses born on the European continent. In particular, Cul o 7, Cul o 5 and Cul o 3 seem to be very important allergens in ISL horses. Although we tested a rather large number of horse sera, a limitation of our study is that breed and country are



**FIGURE 3** Comparison of the IgE levels (shown as % horses with IgE levels above cut off values) to the 27 recombinant *Culicoides* allergens between IBH-affected horses from the Icelandic breed (n = 120) versus horses belonging to other breeds (n = 79) within the horse group from Switzerland. Significant differences between groups in Fisher's exact test are shown with a star



often confounding factors, and the small groups from Ireland, United Kingdom and Germany may not be representative when analysed separately. Further studies with much larger numbers of samples are required to be able to investigate the effects of environment and breed on the sensitization pattern to *Culicoides* r-allergens.

Our study confirmed that a combination of r-allergens differentiates better between IBH-affected and nonaffected horses than the use of single r-allergens or WBE.<sup>16,52,53</sup> Only 45% and 42% of the IBH-affected horses were positive on CO-WBE and CN-TH, respectively, when a cut-off giving a high specificity was used. Combination of the top seven r-allergens in a logistic regression analysis could detect more than 90% of IBH-affected horses both overall and within each country, with a high specificity of > 95%. Combination of these 7 *Culicoides* r-allergens may thus be a powerful tool for diagnostic purposes and should replace the use of crude WBE. However, as a rather large part of the horses are sensitized to additional *Culicoides* salivary allergens, combination of these major allergens might not be sufficient for an effective AIT. This microarray will enable a component-resolved diagnosis as the basis for a patient-tailored AIT.

Most of our original panel of 44 r-allergens were expressed in *E coli*, followed by insect cells, yeast and barley. IgE binding to the same r-allergens expressed in different systems usually correlated well. Proteins can usually be expressed cheaply and in large quantities in *E coli*, but are often insoluble in inclusion bodies and have to be refolded, and lack critical posttranslational modification. Other systems such as yeast glycosylate or even overglycosylate proteins can also lead to false-positive results.<sup>54</sup> No clear trend towards one expression system could be seen when selecting the best performing r-allergen: From the 11 r-allergens that had

been expressed in more than one expression system, five insect cell-expressed, four *E coli*-expressed and one each of yeast- and barley-expressed r-allergen were chosen. Van der Meide et al<sup>18</sup> compared the immunoreactivity between Cul o 1 expressed in *E coli* and insect cells and could not show an improved performance of the insect cell-expressed protein in IgE serology. Another study compared insect cell-, barley- and *E coli*-expressed allergens and showed that they performed quite similarly in serology, while *E coli* produced allergens were not suited for cellular assays.<sup>36</sup> However, as purified natural *Culicoides* allergens are not available, we cannot assess the IgE-binding capability of the r-*Culicoides* salivary proteins in comparison with the natural allergens. A limitation of our study is thus that some of the *Culicoides* r-proteins may be misfolded, resulting in a decrease in their IgE-binding capacity and thus to an under-estimation of the number of major *Culicoides* allergens for IBH. Methods to determine the biological activity of *Culicoides* salivary proteins need to be established in order to investigate whether and in which expression system correctly refolded *Culicoides* r-allergens can be produced.

In conclusion, this study shows that seven *Culicoides obsoletus* r-allergens, of which four are newly expressed allergens, are very important allergens for IBH as they bind serum IgE in > 70% of IBH-affected horses of various breeds and origins within central and northern Europe. Combination of these r-allergens results in a highly specific and sensitive serological test for in vitro diagnosis of IBH. In addition, this microarray with *Culicoides* r-allergens could be a powerful tool for the development of component-resolved, patient-tailored allergen-specific immunotherapy for IBH. Finally, this technique could also be useful to investigate sensitization profiles in human patients allergic to biting midges.

## ACKNOWLEDGEMENTS

This study was supported by the Swiss National Science Foundation, grant no. 310030-160196/1, by the Morris Animal Foundation, grant D16EQ-039, and by a grant from the Foundation "Stiftung Forschung für das Pferd", by the Icelandic Research Fund no. 141071-05, and by the University of Iceland Research Fund. Next-generation sequencing and data analysis were carried out by the University of Bristol Genomics Facility.

## CONFLICT OF INTEREST

All authors have nothing to disclose.

## AUTHOR'S CONTRIBUTIONS

EM, MA and ST designed the study. SJ, SBS, ST, EM, DW, ET and CR produced the r-allergens. DR and HR provided the *Pichia*-expressed r-allergens, the serum samples and meta-data of the German horses. EM, RF and PT performed the clinical examinations of the horses and took the blood samples. EN, SW and MA performed the IgE determinations on the chip array. EN, EM and GSR carried out the statistical analyses. EN and EM wrote the manuscript. All authors have read, edited and approved the final manuscript.

## ORCID

Samuel J. White  <https://orcid.org/0000-0002-3675-7545>

A. Douglas Wilson  <https://orcid.org/0000-0003-0557-5914>

Sígurbjörg Torsteinsdóttir  <https://orcid.org/0000-0002-3195-4937>

[org/0000-0002-3195-4937](https://orcid.org/0000-0002-3195-4937)

Eliane Marti  <https://orcid.org/0000-0003-1284-4350>

## REFERENCES

- Pali-Scholl I, Blank S, Verhoeckx K, et al. EAACI position paper: comparing insect hypersensitivity induced by bite, sting, inhalation or ingestion in human beings and animals. *Allergy* 2019;74(5):874-887.
- Anderson GS, Belton P, Kleider N. The hypersensitivity of horses to *Culicoides* bites in british columbia. *Canad Veterinary J = La revue veterinaire canadienne*. 1988;29(9):718-723.
- Kleider N, Lees MJ. *Culicoides* hypersensitivity in the horse: 15 cases in southwestern british columbia. *Canad Veterinary J = La revue veterinaire canadienne*. 1984;25(1):26-32.
- Riek RF. Studies on allergic dermatitis ("queensland itch") of the horse. *Aust Vet J* 1953;29(7):177-184.
- Schaffartzik A, Hamza E, Janda J, Cramer R, Marti E, Rhyner C. Equine insect bite hypersensitivity: what do we know? *Vet Immunol Immunopathol* 2012;147(3-4):113-126.
- Mellor PS, McCraig J. The probable cause of "sweet itch" in England. *Vet Rec* 1974;95(18):411-415.
- Mullens BA, Owen JP, Heft DE, Soback RV. *Culicoides* and other biting flies on the Palos Verdes Peninsula of Southern California, and their possible relationship to equine dermatitis. *J Am Mosquito Control Assoc*. 2005;21(1):90-95.
- Wilson AD, Heesom KJ, Mawby WJ, Mellor PS, Russell CL. Identification of abundant proteins and potential allergens in *Culicoides nubeculosus* salivary glands. *Vet Immunol Immunopathol* 2008;122(1-2):94-103.
- Boorman J. The maintenance of laboratory colonies of *Culicoides variipennis* (Coq.), *C. nubeculosus* (Mg.) and *C. riethi* Kieff. (Diptera, Ceratopogonidae). *Bull Entomol Res* 1974;64(3):371-377.
- Wagner B, Miller WH, Morgan EE, et al. IgE and IgG antibodies in skin allergy of the horse. *Vet Res* 2006;37(6):813-825.
- Perez de Leon AA, Ribeiro JM, Tabachnick WJ, Valenzuela JG. Identification of a salivary vasodilator in the primary North American vector of bluetongue viruses, *Culicoides variipennis*. *Am J Tropical Med Hygiene*. 1997;57(3):375-381.
- Perez de Leon AA, Tabachnick WJ. Apyrase activity and adenosine diphosphate induced platelet aggregation inhibition by the salivary gland proteins of *Culicoides variipennis*, the North American vector of bluetongue viruses. *Vet Parasitol* 1996;61(3-4):327-338.
- Perez de Leon AA, Valenzuela JG, Tabachnick WJ. Anticoagulant activity in salivary glands of the insect vector *Culicoides variipennis sonorensis* by an inhibitor of factor Xa. *Exp Parasitol* 1998;88(2):121-130.
- Hellberg W, Wilson AD, Mellor P, et al. Equine insect bite hypersensitivity: immunoblot analysis of IgE and IgG subclass responses to *Culicoides nubeculosus* salivary gland extract. *Vet Immunol Immunopathol* 2006;113(1-2):99-112.
- Wilson AD, Harwood LJ, Bjornsdottir S, Marti E, Day MJ. Detection of IgG and IgE serum antibodies to *Culicoides* salivary gland antigens in horses with insect dermal hypersensitivity (sweet itch). *Equine Vet J* 2001;33(7):707-713.
- Peeters LM, Janssens S, Goddeeris BM, et al. Evaluation of an IgE ELISA with *Culicoides* spp. extracts and recombinant salivary antigens for diagnosis of insect bite hypersensitivity in Warmblood horses. *Veterinary J* 2013;198(1):141-147.
- Schaffartzik A, Marti E, Torsteinsdottir S, Mellor PS, Cramer R, Rhyner C. Selective cloning, characterization, and production of the *Culicoides nubeculosus* salivary gland allergen repertoire associated with equine insect bite hypersensitivity. *Vet Immunol Immunopathol* 2011;139(2-4):200-209.
- van der Meide NMA, Roders N, Sloet van Oldruitenborgh-Oosterbaan MM, et al. Cloning and expression of candidate allergens from *Culicoides obsoletus* for diagnosis of insect bite hypersensitivity in horses. *Vet Immunol Immunopathol* 2013;153(3-4):227-239.
- Marti E, Urwyler A, Neuenschwander M, et al. Sulfidoleukotriene generation from peripheral blood leukocytes of horses affected with insect bite dermal hypersensitivity. *Vet Immunol Immunopathol* 1999;71(3-4):307-320.
- Baselgia S, Doherr MG, Mellor P, et al. Evaluation of an in vitro sulphidoleukotriene release test for diagnosis of insect bite hypersensitivity in horses. *Equine Vet J* 2006;38(1):40-46.
- Langner KFA, Darpel KE, Drolet BS, et al. Comparison of cellular and humoral immunoassays for the assessment of summer eczema in horses. *Vet Immunol Immunopathol* 2008;122(1-2):126-137.
- Baker KP, Quinn PJ. A report on clinical aspects and histopathology of sweet itch. *Equine Vet J* 1978;10(4):243-248.
- Kurotaki T, Narayama K, Oyamada T, Yoshikawa H, Yoshikawa T. Immunopathological study on equine insect hypersensitivity ("kasen") in Japan. *J Comp Pathol* 1994;110(2):145-152.
- McKelvie J, Foster AP, Cunningham FM, Hamblin AS. Characterisation of lymphocyte subpopulations in the skin and circulation of horses with sweet itch (*Culicoides* hypersensitivity). *Equine Vet J* 1999;31(6):466-472.
- Ferroglio E, Pregel P, Accossato A, et al. Equine *Culicoides* hypersensitivity: evaluation of a skin test and of humoral response. *J Veterinary Med A, Physiol, Pathol, Clin Med* 2006;53(1):30-33.
- Frey R, Bergvall K, Egenvall A. Allergen-specific IgE in Icelandic horses with insect bite hypersensitivity and healthy controls, assessed by FcεpsilonR1α-based serology. *Vet Immunol Immunopathol* 2008;126(1-2):102-109.
- Langner KFA, Jarvis DL, Nimitz M, et al. Identification, expression and characterisation of a major salivary allergen (Cul s 1) of the biting midge *Culicoides sonorensis* relevant for summer eczema in horses. *Int J Parasitol* 2009;39(2):243-250.

28. Morgan EE, Miller WH Jr, Wagner B. A comparison of intradermal testing and detection of allergen-specific immunoglobulin E in serum by enzyme-linked immunosorbent assay in horses affected with skin hypersensitivity. *Vet Immunol Immunopathol* 2007;120(3-4):160-167.
29. Wagner B, Childs BA, Erb HN. A histamine release assay to identify sensitization to *Culicoides* allergens in horses with skin hypersensitivity. *Vet Immunol Immunopathol* 2008;126(3-4):302-308.
30. Barbet JL, Bevier D, Greiner EC. Specific immunotherapy in the treatment of *Culicoides* hypersensitive horses: a double-blind study. *Equine Vet J* 1990;22(4):232-235.
31. Ginel PJ, Hernandez E, Lucena R, Blanco B, Novales M, Mozos E. Allergen-specific immunotherapy in horses with insect bite hypersensitivity: a double-blind, randomized, placebo-controlled study. *Vet Dermatol* 2014;25(1):29-e10.
32. van der Meide NM, Meulenbroeks C, van Altena C, et al. *Culicoides obsoletus* extract relevant for diagnostics of insect bite hypersensitivity in horses. *Vet Immunol Immunopathol* 2012;149(3-4):245-254.
33. Valenta R, Lidholm J, Niederberger V, Hayek B, Kraft D, Gronlund H. The recombinant allergen-based concept of component-resolved diagnostics and immunotherapy (CRD and CRIT). *Clin Exp Allergy: J Br Soc Allergy Clin Immunol*. 1999;29(7):896-904.
34. Anderson GS, Belton P, Kleider N. Hypersensitivity of horses in British Columbia to extracts of native and exotic species of *Culicoides* (Diptera: Ceratopogonidae). *J Med Entomol*. 1993;30(4):657-663.
35. Russell CL, Heesom KJ, Arthur CJ, et al. Identification and isolation of cDNA clones encoding the abundant secreted proteins in the saliva proteome of *Culicoides nubeculosus*. *Insect Mol Biol* 2009;18(3):383-393.
36. Jonsdottir S, Stefansdottir SB, Kristinarson SB, et al. Barley produced *Culicoides* allergens are suitable for monitoring the immune response of horses immunized with *E coli* expressed allergens. *Vet Immunol Immunopathol* 2018;201:32-37.
37. Marti E, Wang X, Jambari NN, et al. Novel in vitro diagnosis of equine allergies using a protein array and mathematical modelling approach: a proof of concept using insect bite hypersensitivity. *Vet Immunol Immunopathol* 2015;167(3-4):171-177.
38. Janda J, Lehmann M, Luttmann W, Marti E. Cloning and expression of recombinant equine interleukin-3 and its effect on sulfidoleukotriene and cytokine production by equine peripheral blood leukocytes. *Vet Immunol Immunopathol* 2015;163(3-4):202-209.
39. Studier FW. Protein production by auto-induction in high density shaking cultures. *Protein Expr Purif* 2005;41(1):207-234.
40. Choi BH, Cheong H, Jo YK, Bahn SY, Seo JH, Cha HJ. Highly purified mussel adhesive protein to secure biosafety for in vivo applications. *Microb Cell Fact* 2014;13(1):52.
41. Schaffartzik A, Marti E, Cramer R, Rhyner C. Cloning, production and characterization of antigen 5 like proteins from *Simulium vittatum* and *Culicoides nubeculosus*, the first cross-reactive allergen associated with equine insect bite hypersensitivity. *Vet Immunol Immunopathol* 2010;137(1-2):76-83.
42. Ullman C, Mathonet P, Oleksy A, et al. High affinity binders to EphA2 isolated from abdurin scaffold libraries; characterization, binding and tumor targeting. *PLoS One* 2015;10(8):e0135278.
43. Ziegler A, Hamza E, Jonsdottir S, et al. Longitudinal analysis of allergen-specific IgE and IgG subclasses as potential predictors of insect bite hypersensitivity following first exposure to *Culicoides* in Icelandic horses. *Vet Dermatol* 2018;29(1):51-e22.
44. Torsteinsdottir S, Scheidegger S, Baselgia S, et al. A prospective study on insect bite hypersensitivity in horses exported from Iceland into Switzerland. *Acta Vet Scand* 2018;60(1):69.
45. White SJ, Moore-Colyer M, Marti E, et al. Antigen array for serological diagnosis and novel allergen identification in severe equine asthma. *Sci Rep* 2019;9(1):15170.
46. Wilson AD, Harwood L, Torsteinsdottir S, Marti E. Production of monoclonal antibodies specific for native equine IgE and their application to monitor total serum IgE responses in Icelandic and non-Icelandic horses with insect bite dermal hypersensitivity. *Vet Immunol Immunopathol* 2006;112(3-4):156-170.
47. Wulfert F, Sanyasi G, Tongen L, et al. Prediction of tolerance in children with IgE mediated cow's milk allergy by microarray profiling and chemometric approach. *J Immunol Methods* 2012;382(1-2):48-57.
48. Casati S, Racloz V, Delecolle JC, et al. An investigation on the *Culicoides* species composition at seven sites in southern Switzerland. *Med Vet Entomol* 2009;23(2):93-98.
49. Townley P, Baker KP, Quinn PJ. Preferential landing and engorging sites of *Culicoides* species landing on a horse in Ireland. *Equine Vet J* 1984;16(2):117-120.
50. Vorsprach B, Meiser CK, Werner D, Balczun C, Schaub GA. Monitoring of ceratopogonidae in southwest Germany. *Parasitol Res* 2009;105(2):337-344.
51. Möhlmann TWR, Wennergren U, Tälle M, et al. Community analysis of the abundance and diversity of biting midge species (Diptera: Ceratopogonidae) in three European countries at different latitudes. *Parasites & Vectors* 2018;11(1):217.
52. Meulenbroeks C, van der Meide NM, Willemsse T, Rutten VP, Tijhaar E. Recombinant *Culicoides obsoletus* complex allergens stimulate antigen-specific T cells of insect bite hypersensitive Shetland ponies in vitro. *Vet Dermatol* 2015;26(6):467-475, e108-469.
53. van der Meide NM, Savelkoul HF, Meulenbroeks C, Ducro BJ, Tijhaar E. Evaluation of a diagnostic ELISA for insect bite hypersensitivity in horses using recombinant *Obsoletus* complex allergens. *Veterinary J (London, England: 1997)* 2014;200(1):31-37.
54. Curin M, Garib V, Valenta R. Single recombinant and purified major allergens and peptides: How they are made and how they change allergy diagnosis and treatment. *Annals Allergy, Asthma & Immunol: Official Publication Am College Allergy, Asthma, Immunol*. 2017;119(3):201-209.

#### SUPPORTING INFORMATION

Additional supporting information may be found online in the Supporting Information section.

**How to cite this article:** Novotny EN, White SJ, Wilson AD, et al. Component-resolved microarray analysis of IgE sensitization profiles to *Culicoides* recombinant allergens in horses with insect bite hypersensitivity. *Allergy*. 2021;76:1147-1157.

<https://doi.org/10.1111/all.14556>