




Article

Mirna Expression in Glaucomatous and TGF β 2 Treated Lamina Cribrosa Cells

Navita N. Lopez, Rajiv Rangan, Abbot F. Clark  and Tara Tovar-Vidales *

Department of Pharmacology and Neuroscience, The North Texas Eye Research Institute, University of North Texas Health Science Center at Fort Worth, Fort Worth, 3500 Camp Bowie Blvd., Fort Worth, TX 76107, USA; navitalopez@my.unthsc.edu (N.N.L.); rajivrangan@my.unthsc.edu (R.R.); abe.clark@unthsc.edu (A.F.C.)

* Correspondence: tara.tovar-vidales@unthsc.edu

Abstract: Glaucoma is a group of optic neuropathies that leads to irreversible vision loss. The optic nerve head (ONH) is the site of initial optic nerve damage in glaucoma. ONH-derived lamina cribrosa (LC) cells synthesize extracellular matrix (ECM) proteins; however, these cells are adversely affected in glaucoma and cause detrimental changes to the ONH. LC cells respond to mechanical strain by increasing the profibrotic cytokine transforming growth factor-beta 2 (TGF β 2) and ECM proteins. Moreover, microRNAs (miRNAs or miR) regulate ECM gene expression in different fibrotic diseases, including glaucoma. A delicate homeostatic balance between profibrotic and anti-fibrotic miRNAs may contribute to the remodeling of ONH. This study aimed to determine whether modulation of miRNAs alters the expression of ECM in human LC cells. Primary human normal and glaucoma LC cells were grown to confluency and treated with or without TGF β 2 for 24 h. Differences in expression of miRNAs were analyzed using miRNA qPCR arrays. miRNA PCR arrays showed that the miR-29 family was significantly decreased in glaucomatous LC cell strains compared to age-matched controls. TGF β 2 treatment downregulated the expression of multiple miRNAs, including miR-29c-3p, compared to controls in LC cells. LC cells transfected with miR-29c-3p mimics or inhibitors modulated collagen expression.

Keywords: optic nerve head; ONH; LC cells; miRNAs; miR-29; ECM



Citation: Lopez, N.N.; Rangan, R.; Clark, A.F.; Tovar-Vidales, T. Mirna Expression in Glaucomatous and TGF β 2 Treated Lamina Cribrosa Cells. *Int. J. Mol. Sci.* **2021**, *22*, 6178. <https://doi.org/10.3390/ijms22126178>

Academic Editors: Claudio Bucolo and Imad Kansau

Received: 23 April 2021

Accepted: 4 June 2021

Published: 8 June 2021

Publisher's Note: MDPI stays neutral with regard to jurisdictional claims in published maps and institutional affiliations.



Copyright: © 2021 by the authors. Licensee MDPI, Basel, Switzerland. This article is an open access article distributed under the terms and conditions of the Creative Commons Attribution (CC BY) license (<https://creativecommons.org/licenses/by/4.0/>).

1. Introduction

The glaucomas are a heterogeneous group of optic neuropathies defined by an irreversible loss of vision. The cellular and molecular pathophysiology of glaucoma is complex, as multiple factors contribute to the etiology; however, a universal characteristic of all glaucomas is damage to the optic nerve head (ONH) and degeneration of retinal ganglion cell (RGC) axons.

Primary open-angle glaucoma (POAG) is the most prevalent subtype of glaucoma. Although it is a multifactorial disease, elevated intraocular pressure (IOP) is a strong risk factor for POAG development [1–3]. Electron micrographs from glaucoma donor eyes reveal the earliest detectable damage is at the lamina cribrosa (LC) of the ONH [4]. The LC is a distinct region of the ONH formed by successive, connective tissue plates that provide essential scaffolding and pores for unmyelinated RGC axons. The connective tissue plates are composed of extracellular matrix (ECM) macromolecules including collagen, elastin, proteoglycans and glycoproteins, which together provide the strength and elasticity of the LC [5–7]. The glaucomatous LC has notably increased collagen type IV deposition as well as disorganization of collagen type I fibrils and fragmentation of elastin [8–14]. A weakened LC can lead to excessive forces acting on RGC axons resulting in degeneration and RGC apoptosis.

Besides RGC axons, there are two major cell types in the ONH—ONH astrocytes and LC cells [15,16]. LC cells are mechanosensitive cells that interact with the surrounding ECM [17] and respond to mechanical strain by upregulating gene expression of growth

factors, including transforming growth factor-beta 2 (TGF β 2) and ECM proteins such as collagen type IV [15]. Our research group and others have shown that expression of TGF β 2 is higher in glaucomatous LC tissue compared to normal age-matched controls [18,19] and is implicated in altered gene expression and increased ECM deposition in glaucoma [12,15,18,20]. Cultured LC cells secrete TGF β 2 and respond to exogenous TGF β 2 by activating the canonical Smad signaling pathway that increases the synthesis and secretion of ECM proteins [18], suggesting that these cells have an active role in the pathological remodeling of the glaucomatous LC. Mechanical stretch of cultured LC cells increases TGF β 2 expression [15].

We aimed to further explore the mechanisms involved in regulating ECM gene and protein expression in LC cells. microRNAs (miRNAs or miR) are non-coding regulatory RNAs that mediate post-transcriptional regulation of protein-coding genes, including the ECM. miRNAs are tightly regulated to maintain homeostasis; however, their expression is altered in fibrotic diseases, including glaucoma [21,22]. Furthermore, the expression of miRNAs is sensitive to growth factor signaling, including TGF β [23]. TGF β activation of SMADs, cofactors, and transcription factors can lead to transcriptional activation or inhibition of miRNA genes. For example, TGF β signaling induces differentiation of myoblasts to myofibroblasts via SMAD3 binding to the miR-29 promoter and subsequent downregulation of miR-29 expression [24]. miRNAs can also be modulated at the post-transcriptional level by R-SMAD proteins, which recruit and interact with members of the miRNA processing complex, DROSHA and p68, and enhance cleavage of pri-miRNAs to mature miRNAs [25]. Therefore, miRNAs are important for achieving homeostatic regulation of TGF β signaling.

Since TGF β signaling can directly influence the expression of miRNAs and miRNAs regulate the translation of proteins, we hypothesized that TGF β 2 deregulates miRNA expression in LC cells and contributes to LC ECM remodeling. In this study, we used miRNA PCR arrays to determine miRNA expression in glaucomatous and TGF β 2 treated LC cells compared to control LC cells. We also evaluated the effects of miR-29 on collagen type I and IV expression in LC cells.

2. Results

2.1. Differentially Expressed miRNAs in POAG and TGF β 2 Treated LC Cells Compared to Non-Glaucomatous Control LC Cells

We isolated and characterized primary LC cells from POAG and non-glaucomatous eyes. The expression of 88 miRNAs were analyzed in non-glaucomatous and POAG LC cell strains (Figure 1A; Supplementary Table S1). A volcano plot identified differentially expressed profibrotic or anti-fibrotic miRNAs with statistically significant differences in expression (Figure 1). Of these, seven were significantly differentially expressed compared to age-matched non-glaucomatous cells. Hsa-miR-150-5p, hsa-miR-338-5p, hsa-miR-382-5p, and hsa-miR-451a were significantly upregulated in POAG LC cells compared to non-glaucomatous LC cells ($n = 3$; $p < 0.05$). Hsa-miR-26b-5p, hsa-miR-29a-3p, and hsa-miR-29c-3p were downregulated in POAG LC cells compared to non-glaucomatous LC cells ($n = 3$; $p < 0.05$).

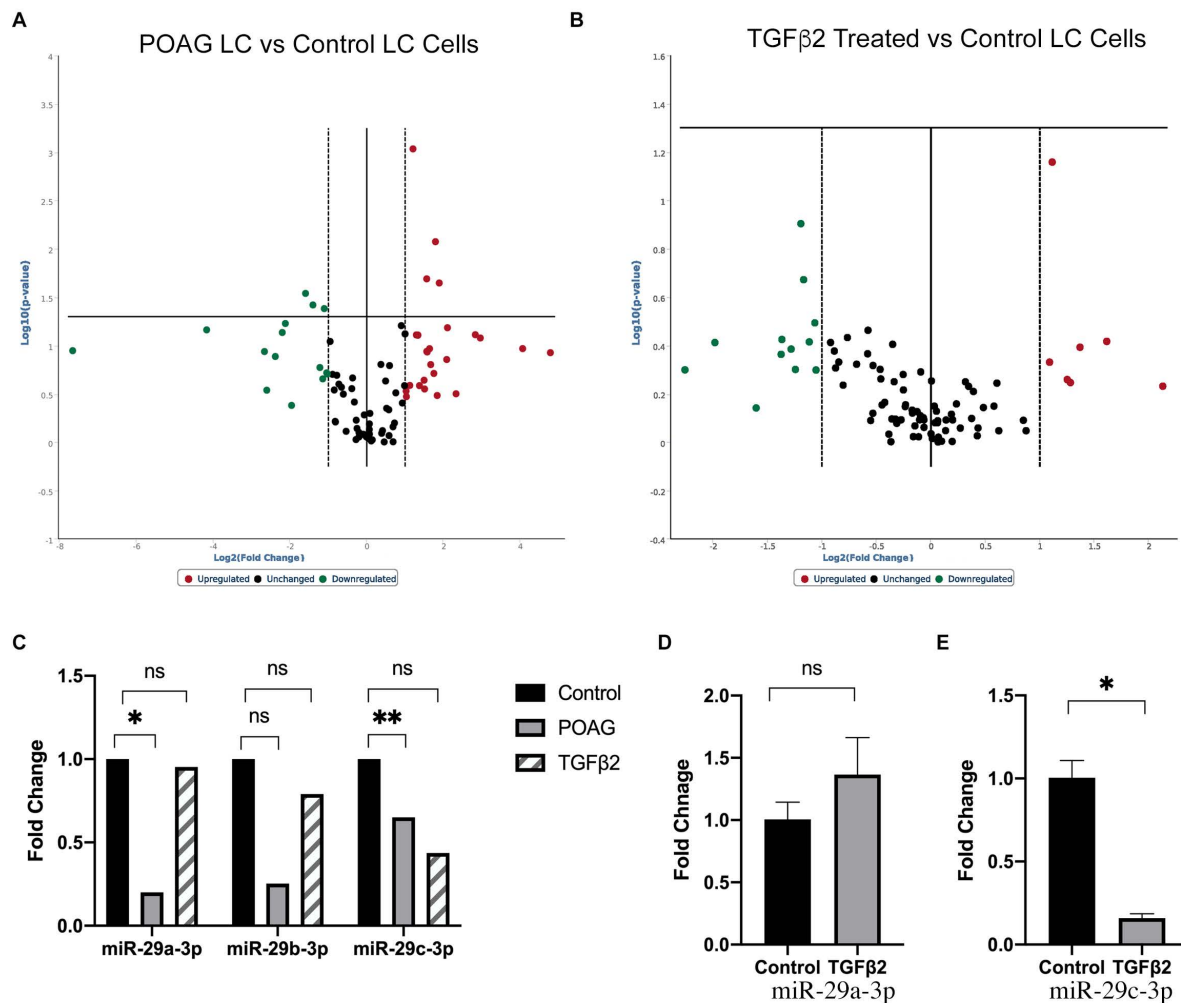


Figure 1. Analysis of differentially expressed mature miRNA in LC cells. Volcano plots of fibrosis pathway-related miRNAs in (A) normal and glaucoma primary human LC cells, or (B) normal human LC cells treated with or without TGFβ₂ for 24 h. Upregulated miRNAs are shown in red to the right, and downregulated miRNAs are shown in green to the left. The horizontal bar indicates the threshold significance of $p < 0.05$. miRNAs were considered significantly upregulated/downregulated if they passed the threshold significance of $p < 0.05$ (horizontal line). (C) Expression of the miR-29 family in glaucomatous and TGFβ₂ treated LC cells compared to controls. Evaluation of (D) miR-29a-3p or (E) miR-29c-3p expression in TGFβ₂ treated LC cells analyzed by qPCR ($p < 0.05$), $n = 3$ biological replicates. * $p < 0.05$; ** $p < 0.005$.

Mature miRNA expression was analyzed across three non-glaucomatous LC cell strains in response to TGFβ₂ treatment (Figure 1B; Supplementary Table S2). miRNAs upregulated included miR-146b-5p, miR-20a-5p, miR-217, miR-324-5p, miR-328-3p, and miR-377-3p. miRNAs downregulated included miR-10a-5p, miR-122-5p, miR-146a-5p, miR-19b-3p, miR-200a-3p, miR29b/c-3p, and miR-449a. However, the miRNA expression changes in LC cells in response to TGFβ₂ were not statistically significant.

Since the expression of miR-29c appeared to decrease in glaucomatous and TGFβ₂ treated LC cells (Figure 1C), we further explored the role of this candidate miRNA in LC cells. A q-PCR analysis of LC cells treated with TGFβ₂ showed no significant change in the expression of miR-29a-3p (Figure 1D); however, there was a significant decrease in the expression of miR-29c-3p (Figure 1E).

2.2. Effects of miR-29c-3p on the ECM

Using miRNet, we determined predicted genes and pathways associated with the miR-29 family. The miR-29 family targets genes that regulate the synthesis, organization, and

degradation of ECM proteins, including *collagens* (Figure 2). We transfected the candidate miR-29c-3p mimic or inhibitor to confirm efficient upregulation and downregulation, respectively, of miR-29c-3p expression in LC cell strains (Figure 3 A–C). We next sought to identify the predicted miRNA-29 binding sites in the 3'-UTRs of collagen 1a1 and collagen 4a1 (Figure 4A) using the TargetScan database. We also sought to validate collagen 1a1 and collagen 4a1 with overexpression of miR-29c-3p. Overexpression of miR-29c-3p resulted in a decrease in collagen 1a1 and collagen 4a1 gene expression compared to the non-targeting control (Figure 4B).

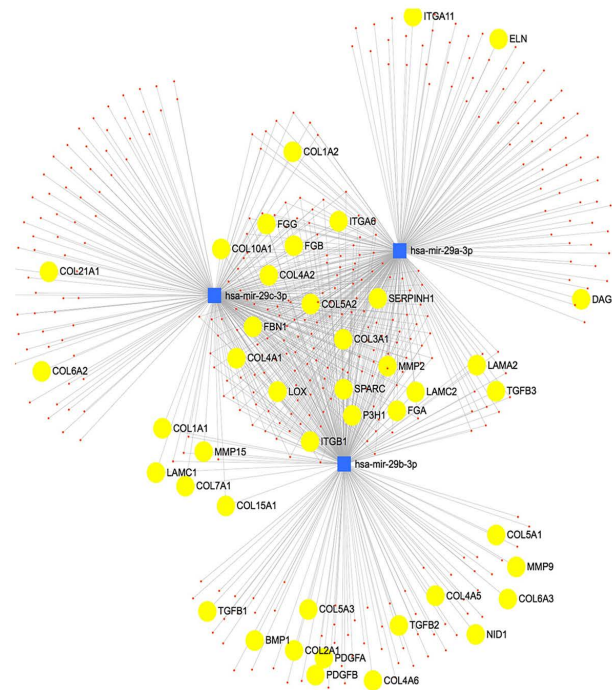


Figure 2. Network analysis of miR-29 regulated genes. miRNet was used to identify target genes regulated by the miR-29 family: miR-29a, miR-29b, and miR-29c. The miR-29 family interacts with several genes connected to ECM synthesis. miRNAs are represented in blue and target mRNAs are represented in yellow.

2.3. Effects of miR-29c on TGF β 2 Induced-ECM Proteins

We next sought to validate the effects of TGF β 2 and miR-29c-3p on the predicted targets of miR-29c. Previously, we showed that collagen expression was increased with TGF β 2 in LC cells compared to control [18]. Therefore, we analyzed the potential effects of using a miR-29c-3p mimic and inhibitor on TGF β 2-induced collagen types I and IV expression by immunocytochemistry (Figures 5 and 6). TGF β 2 induced the expression of collagens type I (Figure 5) and IV (Figure 6) in LC cells. Transfection with miR-29c mimic prevented the TGF β 2-induced expression of collagen types I and IV. In contrast, the inhibition of miR-29c did not block the upregulated TGF β 2-induced collagen I and IV protein expression. This suggests that miR-29 may regulate TGF β 2 signaling and synthesis of ECM proteins. Obtaining additional LC cells from glaucoma patients for the immunostaining was a limiting factor in our experiments.

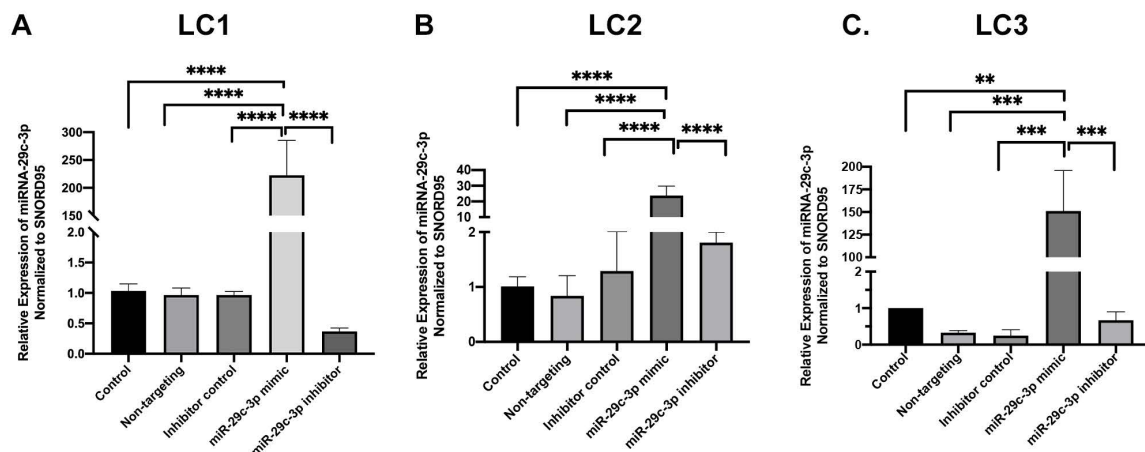


Figure 3. miRNA-29c-3p transfection efficiency in LC cells. Primary human LC cells were transfected with miR-29c-3p mimic (10 nm), miR-29c-3p inhibitor (10 nm), or non-targeting controls and transfection efficiency as determined by qPCR. SNORD95 was used as a normalizing control. (A–C) miRNA-29c-3p expression in each LC cell strain (LC1—donor 56 years old, LC2—donor 70 years old, and LC3—donor 74 years old). Error bars show the standard deviation (SD). One-way ANOVA analysis, Tukey’s multiple comparison test, $n = 3$ biological replicates, **** $p < 0.0001$; *** $p < 0.0005$; ** $p < 0.005$.

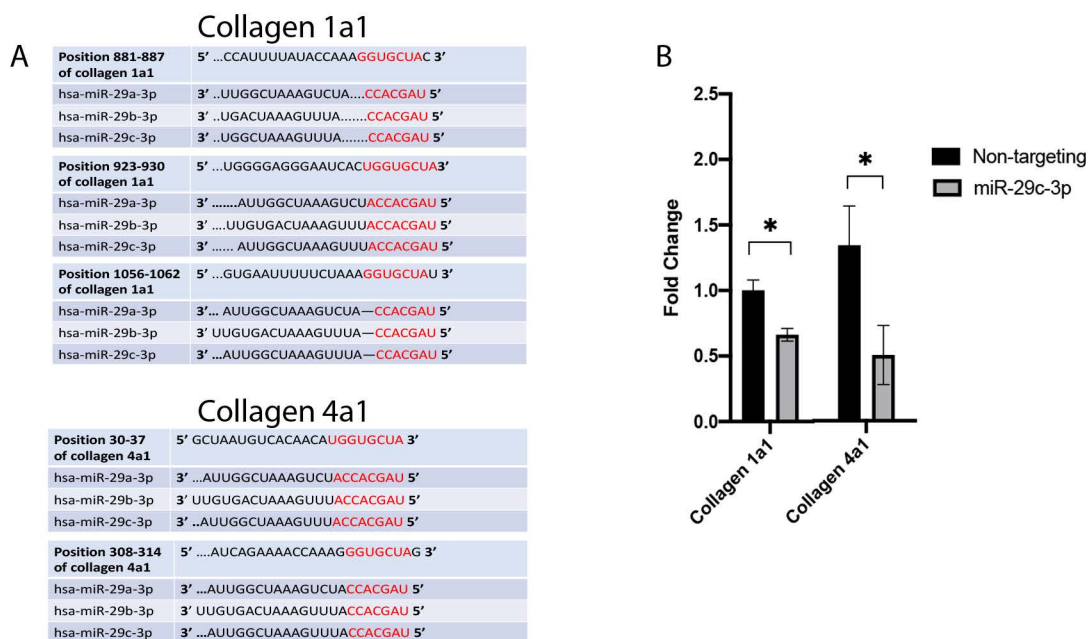


Figure 4. Collagens as prominent targets of the miR-29 family. (A) The TargetScan database was used to identify the 3'-UTRs of collagen 1a1 and collagen 4a1 as predicted binding sites for miR-29 family members (red). (B) Primary human LC cells were transfected with miR-29c-3p mimic (10 nm) or non-targeting control (10 nm). Expression of collagens type 1a1 and 4a1 were analyzed by qPCR. GAPDH was used as an internal control for normalization (* $p < 0.05$).

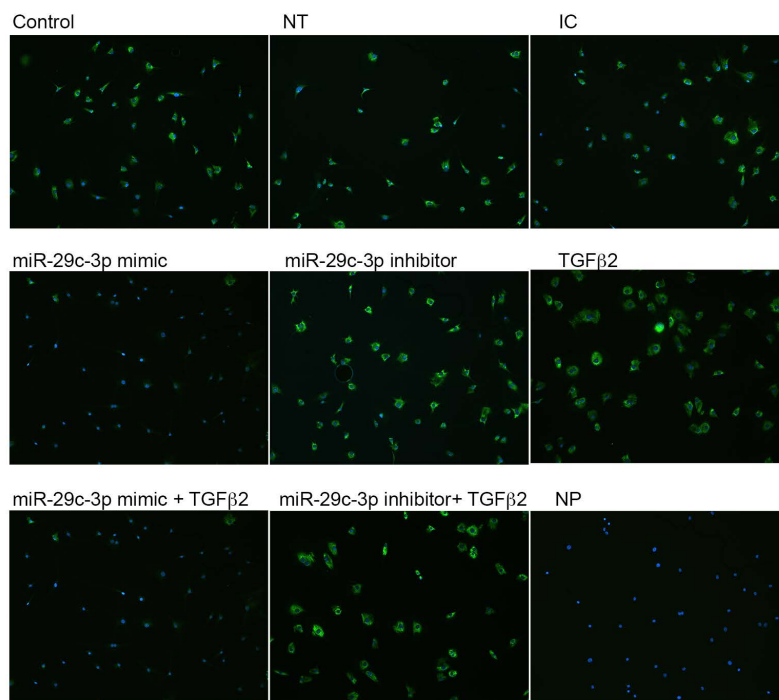


Figure 5. TGFβ2 and miR-29c-3p regulate collagen I expression in LC cells. Primary human LC cells were transfected with miR-29c-3p mimic (10 nM), inhibitor (10 nM), inhibitor control (IC; 10 nM), or non-targeting (NT; 10 nM) control in the presence or absence or TGFβ2 (5 ng/mL) for 72 h. Cells were fixed and immunolabelled with anti-collagen type I antibody (green). Nuclei (blue) were stained with DAPI. NP = no primary Ab control. Representative images are shown. Images taken at 100× magnification.

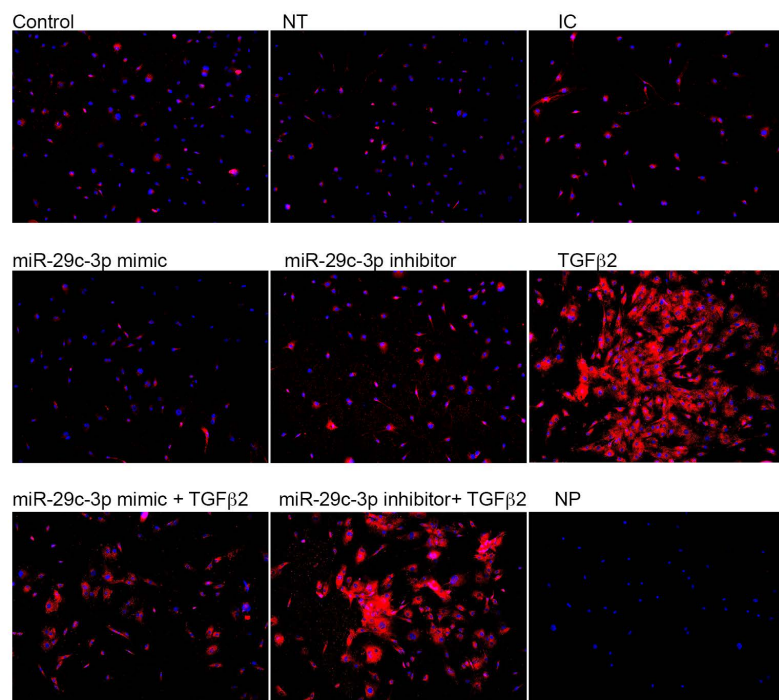


Figure 6. TGFβ2 and miR-29c-3p regulate collagen IV protein expression in LC cells. Primary human LC cells were transfected with miR-29c-3p mimic (10 nM), inhibitor (10 nM), inhibitor control (IC; 10 nM), or non-targeting (NT; 10 nM) control in the presence or absence or TGFβ2 (5 ng/mL) for 72 h. Cells were fixed and immunolabelled with anti-collagen type IV antibody (red). Nuclei (blue) were stained with DAPI. NP = no primary Ab control. Representative images are shown. Images taken at 100× magnification.

3. Discussion

We report the first analyses of miRNA expression in human LC cells. We have shown that miR-29c-3p is downregulated in glaucomatous and TGF β 2 treated LC cells. In addition, using miRNet, a web-based tool, to investigate the potential function of miR-29c-3p, we show that miR-29c-3p targets several ECM proteins and is heavily involved in tissue remodeling. In vitro analysis shows that inhibition of miR-29c-3p promotes collagen types I and IV synthesis, while overexpression of miR-29c-3p led to a decrease in protein expression. Our findings suggest that downregulation of miR-29c-3p in glaucoma and TGF β 2 treated LC cells disrupts the ONH ECM and may affect the laminar tissue homeostasis, leading to pathogenic damage to the glaucomatous ONH.

Using TargetScan and miRNet, we were able to predict miRNA-target interactions for the miR-29 family. The anti-fibrotic miR-29 family targets the mRNA of several ECM and ECM-related proteins, including the collagens, bone morphogenetic protein 1 (BMP1), and lysyl oxidase, suggesting that it plays a role in ECM and tissue homeostasis. Interestingly, TGF β 2 induces the expression of BMP1 and lysyl oxidase in trabecular meshwork cells [26,27]. BMP1 converts secreted ECM and ECM-related precursor proteins into mature functional proteins. Furthermore, miRNA-29b negatively regulated BMP1 and prevented the processing and synthesis of ECM genes in trabecular meshwork cells [22]. Also, lysyl oxidase is responsible for increased post-translational covalent cross-linking of ECM proteins. Moreover, Zhang et al. reported that TGF β decreased miRNA-29b and induced lysyl oxidase expression in an immortalized human hepatic stellate cell line [28]. These data suggest that the miRNA-29 family targets BMP1 and lysyl oxidase and is involved in the tissue remodeling observed in glaucoma. The three main members of miR-29 (miR-29a, miR-29b, and miR-29c) have several common predicted targets; however, they may have tissue or cell-specific expression patterns and functions. ONH cells, including LC cells, are thought to contribute to glaucomatous tissue remodeling of the LC; therefore, it is necessary to explore the expression and role of fibrosis-related miRNAs. We found that all three members of the miR-29 family were downregulated in glaucomatous LC cells; however, only miR-29a-3p and miR-29c-3p were statistically significant. Similarly, these miRNAs were downregulated in TGF β 2 treated LC cells, and we also confirmed through qPCR analysis that miR-29c-3p is downregulated in LC cells treated with TGF β 2. Overall, our results suggest that TGF β 2 may negatively affect the expression of miR-29 in LC cells, and that this miRNA therefore appears to be biologically relevant to ONH cells. Since miR-29 is negatively associated with ECM synthesis, inhibition of this miRNA may contribute to the glaucomatous tissue remodeling in the ONH. We need to better understand the expression pattern of miR-29, including the cellular localization and the functional roles of miR-29 in the normal and glaucomatous ONH.

Our results, along with those of other independent investigators, have shown that TGF β 2 remodels the ECM of the ONH and eventually leads to progressive damage to RGC axons. Our results show that TGF β 2 signaling and miR-29c-3p are important in regulating ECM synthesis, and that inhibition of miR-29c-3p may lead to aberrant ECM synthesis. Previous studies have shown that there is increased expression of TGF β 2 in the glaucomatous ONH and that elevated TGF β 2 is associated with increased ECM deposition [18,19,29]. We show that in the absence of TGF β 2 signaling, overexpression of miR-29c-3p leads to inhibition of collagen type IV synthesis in cultured LC cells. TGF β 2 treatment increases collagen types I and type IV expression in LC cells. However, the miR-29c-3p mimic antagonizes this effect by decreasing protein expression of collagen types I and IV. We also used an miR-29c-3p inhibitor in both the presence and absence of TGF β 2, and observed increased expression of collagen types I and IV compared to controls. We observed intracellular collagen in LC cells due to the short miRNA transfection protocol, as extracellular collagen expression takes time to get synthesized, secreted, and assembled.

These data collectively suggest that miR-29c-3p is an important regulator of ECM synthesis and may regulate TGF β 2 signaling in LC cells. Future studies will determine how

miR-29c-3p regulates TGF β 2 signaling, either through inhibition of TGF β ligands, TGF β receptors, receptor SMADs, or by directly inhibiting the synthesis of ECM proteins [30].

Further studies may determine how TGF β 2 regulates miRNA expression in LC cells. For example, evaluating whether TGF β 2 signaling directly inhibits transcription of miR-29c or affects the processing of miR-29c [31]. It is possible that TGF β 2 signaling leads to the recruitment of transcription factors to the miRNA promoter, which can affect the transcription of miRNAs [24]. Alternatively, TGF β 2 signaling may affect the miRNA processing complex to alter primary, precursor, and mature miRNAs. Designing primers to the hairpin loop, precursor and mature miRNAs would be a way to quantify any differences [32,33]. To address what occurs first, miRNA or TGF β 2 dysregulation, we need to look at the response to earlier events in glaucomatous optic neuropathy such as elevated intraocular pressure (IOP). Models predict IOP-related stretch and compression of the lamina neural tissue, LC, sclera, and pia mater [34]. As IOP levels increased, the cells within the ONH reached peak strain (15%) at 50mmHg [34]. Further studies have been performed to investigate gene and protein expression changes in LC cells and astrocytes exposed to mechanical stretch. LC cells exposed to 15% stretch using the Flexcell system resulted in upregulation of ECM gene expression, including elastin, collagens, lysyl oxidase, and TGF β 2 [15]. Other studies analyzed the effects of increasing stretch by 0%, 3%, and 12%, on ONH astrocytes and LC cells [20,35]. In LC cells, protein synthesis increased from 3% to 12% stretch, suggesting LC cells are mechanosensitive and respond to mechanical strain [20]. To determine whether miRNAs are dysregulated in response to mechanical strain, we could analyze miRNA expression in response to stretch at low and high strain conditions. It may be possible that stretch dysregulates miRNAs and leads to enhanced TGF β signaling.

4. Materials and Methods

4.1. Cell Culture and TGF β 2 Treatment

LC cell strains were derived from normal and glaucomatous human donor eyes obtained from the Lion Eye Institute for Transplant and Research (Tampa, FL) as previously described [15]. Acquisition of donor eyes closely followed the tenets of Helsinki with donor and/or family written consent. Donor eyes were anonymized to prevent donor identification. Primary human glaucoma ($n = 4$) and non-glaucomatous ($n = 3$) LC cell strains were generated from human lamina cribrosa explants and characterized and maintained as previously described [15]. Briefly, lamina cribrosa cells were characterized by negative expression for GFAP and positive expression for α -SMA and laminin [15]. LC cells were maintained in Ham's F10 medium (Sigma Aldrich, St. Louis, MO, USA) supplemented with 10% fetal bovine serum (Atlas Biologicals, Fort Collins, CO, USA), glutamine (0.292 mg/mL), and penicillin (100 units/mL) and streptomycin (0.1 mg/mL) (ThermoFisher Scientific, Waltham, MA, USA). The medium was changed every 2–3 days. Cell cultures were maintained at 37 °C with 5% CO₂ within a humidified incubator. The ages of the normal donors were 56 years, 70 years, 74 years, and 82 years, while the ages of the glaucoma donors were 66 years, 73 years, and 97 years.

4.2. miRNA PCR Array

To evaluate glaucoma associated changes in LC cell miRNA expression, we seeded non-glaucomatous and POAG LC cells into wells of a 6-well plate in medium containing serum. To determine changes in miRNA expression due to TGF β 2 treatment, we also seeded non-glaucomatous LC cells into wells of a 6-well plate in medium containing serum, and when the cells reached 100% confluency, we replaced the medium with serum-free medium for 24 h. The next day, the cells were treated with recombinant TGF β 2 (5 ng/mL) (R&D Systems, Minneapolis, MN, USA) or vehicle control in serum-free medium. According to the manufacturer's guidelines, total RNA was isolated using QIAzol and the miRNeasy mini kit (Qiagen, Germantown, MD, USA). RNA was quantified using the Nanodrop 2000 (ThermoFisher Scientific, Waltham, MA, USA), and the purity/quality of RNA was assessed

by 260/280 and 260/230 ratios. miRNA cDNA was synthesized using the HiSpec buffer and miScript II RT kit (Qiagen, Germantown, MD, USA). The thermoprofile parameters used were 37 °C for 60 min and 95 °C for 5 min. cDNA was diluted to 200 µL and we performed mature miRNA profiling using the miScript miRNA PCR array for Human Fibrosis (MIHS-117Z, Qiagen, Germantown, MD, USA) that includes 88 mature human miRNA primers. PCR was performed on the CFX96 real-time PCR system (Bio-Rad Laboratories Hercules, CA, USA). The thermoprofile parameters were 95 °C for 30 s, followed by 40 cycles of 95 °C for 10 s, 60 °C for 30 s, and concluded with a melting curve step. Representative data are shown on volcano plots. Statistical analysis was performed using Qiagen's data analysis software (<https://dataanalysis.qiagen.com/mirna/arrayanalysis.php>) (accessed on 24 June 2020). The miRNAs included in this array target the mRNA of profibrotic, anti-fibrotic, signal transduction, epithelial-mesenchymal transition and ECM genes. For the full miRNA list, visit Qiagen's website (<https://geneglobe.qiagen.com/product-groups/miscript-mirna-pcr-arrays>) (accessed on 24 June 2020).

4.3. In Vitro Transfection of LC Cells Using miRNA Mimics and Inhibitors

LC cells were plated 24 h before transfection in Ham's F10 medium and transfected at a density of ~50–60% confluency (HiPerFect; Qiagen, Germantown, MD, USA) following the manufacturer's instructions. In brief, 10 nM of miRNA-29c-3p mimic or miRNA-29c-3p inhibitor with 2.5 µL HiPerFect were diluted in 1 mL serum-free OPTI-MEM medium (Invitrogen), then incubated for 15 min at room temperature and transferred to the appropriate well with LC cells. The cells were then incubated overnight at 37 °C in 5% CO₂/95% air. The efficiency of the transfection was confirmed by qPCR. Negative controls consisted of cells with no treatment, non-targeting control for mimic experiments, and inhibitor control (Qiagen, Germantown, MD, USA) for inhibitor experiments. The miRNA-29c-3p mimic are double-stranded RNA oligonucleotides designed to mimic endogenously mature miRNA-29c activity. The miR-29c-3p inhibitors are single-strand RNA oligonucleotides designed to inhibit miRNA activity.

4.4. RNA Isolation and qPCR

For miRNA analysis, total RNA was isolated using a miRNeasy isolation kit (miRNeasy mini kit, Qiagen, Germantown, MD, USA) according to the manufacturer's guidelines. Using 200 ng RNA, miRNA cDNA was synthesized by reverse transcription (HiSpec buffer and miScript II RT kit, Qiagen, Germantown, MD, USA). The thermoprofile parameters used were 37 °C for 60 min and 95 °C for 5 min. cDNA was diluted to 200 µL to perform qPCR reactions in a 25 µL mixture containing miScript SYBR Green, miScript primer, miScript universal primer, RNase free water and cDNA. The miR-29a-3p (5'-UAGCACCAUCUGAAAUCGGUUA) and miR-29c-3p (5'-UAGCACCAUUUGAAAUCGGUUA) primer sequences were obtained from Qiagen. The expression of miRNA was normalized to SNORD 95 using the $\Delta\Delta$ cycle threshold (CT) method.

For mRNA analysis, total RNA was isolated using the RNeasy kit (Qiagen, Germantown, MD, USA). RNA was quantified using the Nanodrop 2000 (ThermoFisher Scientific, Waltham, MA, USA) and purity/quality of RNA assessed by 260/280 and 260/230 ratios. cDNA was synthesized from total RNA (500 ng) by reverse transcription using the iScript supermix (Bio-Rad Laboratories) according to the manufacturer's instructions. Q-PCR reactions were performed in a 20 µL mixture containing 1 µL of the cDNA with 1X SYBR Green Supermix (Bio-Rad Laboratories), using the following parameters: 95 °C for 5 followed by 40 cycles of 95 °C for 15 s, and 72 °C for 15 s (CFX96 System and CFX Manager Software; Bio-Rad Laboratories). Primers were designed using Primer3 software (Whitehead Institute, Massachusetts Institute of Technology, Cambridge, MA) for collagens 1a1 and 4a1. The expression of mRNAs was normalized to GAPDH using the $\Delta\Delta$ CT method. Error bars show the SD. A student's *t*-test, *n* = 3 technical replicates, * *p* < 0.05.

Collagen 1a1 Forward 5'-AGCCAGCAGATCGAACAAT-3'

Collagen 1a1 Reverse 5'-TCTTGCCTTGGGGTTCTTG-3'

Collagen 4a1 Forward 5'-ATAGACGGATATCGGGGGCCT-3'
Collagen 4a1 Reverse 5'-GGATTTGAAAAAGCAATGGCACTC-3'
GAPDH Forward: 5'-GGTGAAGGTCGGAGTCAAC-3'
GAPDH Reverse: 5'-CCATGGGTGGAATCATATTG-3'

4.5. Immunocytochemistry

LC cells were plated at a density of 8000 cells/well in a 24 well plate with glass coverslips and incubated in Ham's F10 medium at 37 °C and 95% air. The following day, the cells were transfected with 10nM of miRNA mimics, inhibitors, or controls in OptiMem. The next day, the cells were treated with or without TGFβ2 for 48 h in Ham's F10 medium. Cells were fixed in 4% paraformaldehyde in Dulbecco's phosphate-buffered saline (PBS; Sigma-Aldrich, St Louis, MO, USA) for 10 min at room temperature. Cells were permeabilized with 0.2% Triton-X 100 at room temperature for 20 min and then blocked with 10% donkey serum in PBS superbloc for 1 h at room temperature, followed by primary antibody (Table 1) (diluted 1:100 in Superblock PBS) incubation overnight at 4 °C under dark conditions. The next day, the cells were washed three times with PBS for 5 min each, followed by incubation with the appropriate secondary antibody conjugated to a fluorescent 594 or 488 dye (Invitrogen; diluted 1:200 in Superblock PBS) for 1 h at room temperature in dark conditions. Cells were then washed three times with PBS for 5 min each, followed by two quick rinses with dH₂O. Coverslips were mounted carefully with DAPI prolonged gold (Invitrogen) and left to dry at room temperature for 24 h in dark conditions. Controls consisted of the omission of primary antibodies. Images were captured using the Nikon Eclipse TieU microscope (Melville, NY, USA) containing the Nuance FX imaging system (CRI, Burlington, MA, USA).

Table 1. Antibody list used for immunocytochemistry staining.

Antibody	Source	Dilution
Rabbit anti-Collagen I	Abcam	1:200
Rabbit anti-Collagen IV	Abcam	1:200
Donkey anti-Rabbit 488	Invitrogen	1:500
Donkey anti-Rabbit 594	Invitrogen	1:500

4.6. Statistical Analysis

A student's *t*-test was performed to determine statistical significance between two groups. A one-way ANOVA and Tukey's multiple comparison test was performed to determine statistically significant differences between three or more independent groups. GraphPad Prism 9.0 (GraphPad Software, San Diego, CA, USA) was used for data analysis. A value of $p < 0.05$ was considered to be significantly different.

5. Conclusions

In summary, we have used an in vitro cell culture to determine the expression of miRNAs in glaucomatous, non-glaucomatous, and TGFβ2 treated human LC cells. Our data showed downregulation of the miRNA-29 family in glaucomatous LC cells compared to normal healthy LC cells. Moreover, there was a decrease in the expression of the miRNA-29 family upon exogenous treatment with TGFβ2. We believe there is an interaction between the miR-29 family and mRNAs encoding the collagen genes in LC cells. Moreover, it is predicted that the miR-29 family target multiple collagen genes using the TargetScan database and miRNet network analysis. Lastly, transfecting LC cells with miR-29c-3p inhibited TGFβ2 induced collagen I and IV. The dysregulation of TGFβ2 signaling and aberrant miR-29 expression may contribute to LC tissue remodeling in glaucoma. TGFβ2 can change miR-29c-3p expression, and may eventually contribute to increased ECM deposition in the glaucomatous LC. Our data suggest that restoration of miR-29c expression in the ONH may restore homeostatic TGFβ2 signaling and ECM turnover.

Supplementary Materials: The following are available online at <https://www.mdpi.com/article/10.3390/ijms22126178/s1>.

Author Contributions: N.N.L. designed the experiments, collected and analyzed the data, and wrote the paper. R.R. collected and analyzed the data. A.F.C. interpreted the data and edited the manuscript. T.T.-V. conceptualized and designed the experiments, interpreted the data, and edited the manuscript. All authors have read and agreed to the published version of the manuscript.

Funding: This research was funded by the Glaucoma Research Foundation (TTV) and the NIH training grant T32 AG020494 (NL).

Institutional Review Board Statement: The human donor eyes were anonymized, so this study is IRB exempt.

Informed Consent Statement: Informed consent from the donor or a family member was obtained by the Lions Eye Institute for Transplant and Research (Tampa, FL, USA).

Data Availability Statement: All expression data are provided in Supplementary Tables. Data also have been deposited in GEO.

Acknowledgments: The authors would like to thank the Lions Eye Institute for Transplant and Research for providing human donor eyes.

Conflicts of Interest: The authors declare no conflict of interest.

References

1. Armaly, M.F.; Krueger, D.E.; Maunder, L.; Becker, B.; Hetherington, J., Jr.; Kolker, A.E.; Levene, R.Z.; Maumenee, A.E.; Pollack, I.P.; Shaffer, R.N. Biostatistical Analysis of the Collaborative Glaucoma Study: I. Summary Report of the Risk Factors for Glaucomatous Visual-Field Defects. *Arch. Ophthalmol.* **1980**, *98*, 2163–2171. [[CrossRef](#)] [[PubMed](#)]
2. Sommer, A. Intraocular Pressure and Glaucoma. *Am. J. Ophthalmol.* **1989**, *107*, 186–188. [[CrossRef](#)]
3. Drance, S.M.; Schulzer, M.; Thomas, B.; Douglas, G.R. Multivariate Analysis in Glaucoma: Use of Discriminant Analysis in Predicting Glaucomatous Visual Field Damage. *Arch. Ophthalmol.* **1981**, *99*, 1019–1022. [[CrossRef](#)]
4. Quigley, H.A.; Hohman, R.M.; Addicks, E.M.; Massof, R.W.; Green, W.R. Morphologic changes in the lamina cribrosa correlated with neural loss in open-angle glaucoma. *Am. J. Ophthalmol.* **1983**, *95*, 673–691. [[CrossRef](#)]
5. Hernandez, M.R.; Luo, X.X.; Igoe, F.; Neufeld, A.H. Extracellular matrix of the human lamina cribrosa. *Am. J. Ophthalmol.* **1987**, *104*, 567–576. [[CrossRef](#)]
6. Caparas, V.L.; Cintron, C.; Hernandez-Neufeld, M.R. Immunohistochemistry of proteoglycans in human lamina cribrosa. *Am. J. Ophthalmol.* **1991**, *112*, 489–495. [[CrossRef](#)]
7. Sawaguchi, S.; Yue, B.Y.; Fukuchi, T.; Iwata, K.; Kaiya, T. Sulfated proteoglycans in the human lamina cribrosa. *Investig. Ophthalmol. Vis. Sci.* **1992**, *33*, 2388–2398.
8. Pena, J.D.; Netland, P.A.; Vidal, I.; Dorr, D.A.; Rasky, A.; Hernandez, M.R. Elastosis of the lamina cribrosa in glaucomatous optic neuropathy. *Exp. Eye Res.* **1998**, *67*, 517–524. [[CrossRef](#)] [[PubMed](#)]
9. Quigley, H.A.; Brown, A.; Dorman-Pease, M.E. Alterations in elastin of the optic nerve head in human and experimental glaucoma. *Br. J. Ophthalmol.* **1991**, *75*, 552–557. [[CrossRef](#)] [[PubMed](#)]
10. Hernandez, M.R. Ultrastructural immunocytochemical analysis of elastin in the human lamina cribrosa. Changes in elastic fibers in primary open-angle glaucoma. *Invest. Ophthalmol. Vis. Sci.* **1992**, *33*, 2891–2903. [[PubMed](#)]
11. Hernandez, M.R.; Andrzejewska, W.M.; Neufeld, A.H. Changes in the extracellular matrix of the human optic nerve head in primary open-angle glaucoma. *Am. J. Ophthalmol.* **1990**, *109*, 180–188. [[CrossRef](#)]
12. Hernandez, M.R.; Ye, H. Glaucoma: Changes in extracellular matrix in the optic nerve head. *Ann. Med.* **1993**, *25*, 309–315. [[CrossRef](#)]
13. Morrison, J.C.; Dorman-Pease, M.E.; Dunkelberger, G.R.; Quigley, H.A. Optic nerve head extracellular matrix in primary optic atrophy and experimental glaucoma. *Arch. Ophthalmol.* **1990**, *108*, 1020–1024. [[CrossRef](#)]
14. Belmares, R.; Raychaudhuri, U.; Maansson, S.; Clark, A.F. Histological investigation of human glaucomatous eyes: Extracellular fibrotic changes and galectin 3 expression in the trabecular meshwork and optic nerve head. *Clin. Anat.* **2018**, *31*, 1031–1049. [[CrossRef](#)] [[PubMed](#)]
15. Kirwan, R.P.; Fenerty, C.H.; Crean, J.; Wordinger, R.J.; Clark, A.F.; O'Brien, C.J. Influence of cyclical mechanical strain on extracellular matrix gene expression in human lamina cribrosa cells in vitro. *Mol. Vis.* **2005**, *11*, 798–810.
16. Lopez, N.N.; Clark, A.F.; Tovar-Vidales, T. Isolation and characterization of human optic nerve head astrocytes and lamina cribrosa cells. *Exp. Eye Res.* **2020**, *197*, 108103. [[CrossRef](#)] [[PubMed](#)]
17. Tovar-Vidales, T.; Wordinger, R.J.; Clark, A.F. Identification and localization of lamina cribrosa cells in the human optic nerve head. *Exp. Eye Res.* **2016**, *147*, 94–97. [[CrossRef](#)]

18. Zode, G.S.; Sethi, A.; Brun-Zinkernagel, A.M.; Chang, I.F.; Clark, A.F.; Wordinger, R.J. Transforming growth factor-beta2 increases extracellular matrix proteins in optic nerve head cells via activation of the Smad signaling pathway. *Mol. Vis.* **2011**, *17*, 1745–1758.
19. Pena, J.D.; Taylor, A.W.; Ricard, C.S.; Vidal, I.; Hernandez, M.R. Transforming growth factor beta isoforms in human optic nerve heads. *Br. J. Ophthalmol.* **1999**, *83*, 209–218. [[CrossRef](#)]
20. Rogers, R.; Dharsee, M.; Ackloo, S.; Flanagan, J.G. Proteomics analyses of activated human optic nerve head lamina cribrosa cells following biomechanical strain. *Invest. Ophthalmol. Vis. Sci.* **2012**, *53*, 3806–3816. [[CrossRef](#)]
21. Luna, C.; Li, G.; Qiu, J.; Epstein, D.L.; Gonzalez, P. MicroRNA-24 regulates the processing of latent TGFbeta1 during cyclic mechanical stress in human trabecular meshwork cells through direct targeting of FURIN. *J. Cell. Physiol.* **2011**, *226*, 1407–1414. [[CrossRef](#)] [[PubMed](#)]
22. Luna, C.; Li, G.; Qiu, J.; Epstein, D.L.; Gonzalez, P. Role of miR-29b on the regulation of the extracellular matrix in human trabecular meshwork cells under chronic oxidative stress. *Mol. Vis.* **2009**, *15*, 2488–2497. [[PubMed](#)]
23. Davis, B.N.; Hata, A. Regulation of MicroRNA Biogenesis: A miRiad of mechanisms. *Cell Commun. Signal.* **2009**, *7*, 18. [[CrossRef](#)]
24. Zhou, L.; Wang, L.; Lu, L.; Jiang, P.; Sun, H.; Wang, H. Inhibition of miR-29 by TGF-beta-Smad3 signaling through dual mechanisms promotes transdifferentiation of mouse myoblasts into myofibroblasts. *PLoS ONE* **2012**, *7*, e33766. [[CrossRef](#)] [[PubMed](#)]
25. Davis, B.N.; Hilyard, A.C.; Lagna, G.; Hata, A. SMAD proteins control DROSHA-mediated microRNA maturation. *Nature* **2008**, *454*, 56–61. [[CrossRef](#)]
26. Sethi, A.; Mao, W.; Wordinger, R.J.; Clark, A.F. Transforming growth factor-beta induces extracellular matrix protein cross-linking lysyl oxidase (LOX) genes in human trabecular meshwork cells. *Invest. Ophthalmol. Vis. Sci.* **2011**, *52*, 5240–5250. [[CrossRef](#)]
27. Tovar-Vidales, T.; Fitzgerald, A.M.; Clark, A.F.; Wordinger, R.J. Transforming growth factor-beta2 induces expression of biologically active bone morphogenetic protein-1 in human trabecular meshwork cells. *Invest. Ophthalmol. Vis. Sci.* **2013**, *54*, 4741–4748. [[CrossRef](#)]
28. Zhang, Y.; Ghazwani, M.; Li, J.; Sun, M.; Stolz, D.B.; He, F.; Fan, J.; Xie, W.; Li, S. MiR-29b inhibits collagen maturation in hepatic stellate cells through down-regulating the expression of HSP47 and lysyl oxidase. *Biochem. Biophys. Res. Commun.* **2014**, *446*, 940–944. [[CrossRef](#)]
29. Fuchshofer, R. The pathogenic role of transforming growth factor-beta2 in glaucomatous damage to the optic nerve head. *Exp. Eye Res.* **2011**, *93*, 165–169. [[CrossRef](#)]
30. Suzuki, H.I. MicroRNA Control of TGF- β Signaling. *Int. J. Mol. Sci.* **2018**, *19*. [[CrossRef](#)] [[PubMed](#)]
31. Lee, Y.; Han, J.; Yeom, K.H.; Jin, H.; Kim, V.N. Drosha in primary microRNA processing. *Cold Spring Harb. Symp. Quant. Biol.* **2006**, *71*, 51–57. [[CrossRef](#)]
32. Schmittgen, T.D.; Jiang, J.; Liu, Q.; Yang, L. A high-throughput method to monitor the expression of microRNA precursors. *Nucleic Acids Res.* **2004**, *32*, e43. [[CrossRef](#)] [[PubMed](#)]
33. Schmittgen, T.D.; Lee, E.J.; Jiang, J.; Sarkar, A.; Yang, L.; Elton, T.S.; Chen, C. Real-time PCR quantification of precursor and mature microRNA. *Methods* **2008**, *44*, 31–38. [[CrossRef](#)] [[PubMed](#)]
34. Sigal, I.A.; Flanagan, J.G.; Tertinegg, I.; Ethier, C.R. Predicted extension, compression and shearing of optic nerve head tissues. *Exp. Eye Res.* **2007**, *85*, 312–322. [[CrossRef](#)]
35. Rogers, R.S.; Dharsee, M.; Ackloo, S.; Sivak, J.M.; Flanagan, J.G. Proteomics analyses of human optic nerve head astrocytes following biomechanical strain. *Mol. Cell. Proteom.* **2012**, *11*. [[CrossRef](#)] [[PubMed](#)]