

BRIEF COMMUNICATION

Dimethyl fumarate inhibits integrin $\alpha 4$ expression in multiple sclerosis models

Yasuyuki Kihara^a, Aran Groves^a, Richard R. Rivera & Jerold Chun

Department of Molecular and Cellular Neuroscience, Dorris Neuroscience Center, The Scripps Research Institute, 10550 N. Torrey Pines Rd., DNC-118, La Jolla, California 92037

Correspondence

Jerold Chun, Department of Molecular and Cellular Neuroscience, Dorris Neuroscience Center, The Scripps Research Institute, 10550 N. Torrey Pines Rd., DNC-118, La Jolla, CA 92037. Tel: 858-784-8410; Fax: 858-784-7084; E-mail: jchun@scripps.edu

Funding Information

This work was supported by the National Institutes of Health grants (MH051699, NS048478, DA019674; J. C.), research grants from Novartis (J. C.), and the Human Frontier Science Program (Y. K.).

Received: 14 July 2015; Revised: 14 August 2015; Accepted: 21 August 2015

Annals of Clinical and Translational Neurology 2015; 2(10): 978–983

doi: 10.1002/acn3.251

^aThese authors contributed equally to this work.

Introduction

Dimethyl fumarate (DMF, Tecfidera) is an FDA-approved oral multiple sclerosis (MS) therapy that is one of a growing number of oral disease modifying therapies now available for the treatment of relapsing forms of MS.¹ DMF is proposed to function through a transcription factor, nuclear factor erythroid 2-like 2 (Nrf2), that can regulate antioxidant genes, thereby preventing neurodegeneration by inhibiting reactive oxygen and nitrogen species.¹ DMF is also used clinically in the treatment of psoriasis, where it alters cell adhesion molecules.² Although DMF is efficacious in MS and psoriasis, DMF-associated progressive multifocal leukoencephalopathy (PML) cases were reported in psoriasis patients and in an MS patient.^{3,4} PML was also reported in MS patients receiving natalizumab (Tysabri), a monoclonal antibody against integrin

Abstract

Dimethyl fumarate is an orally bioavailable compound for the treatment of multiple sclerosis and psoriasis. A mechanism involving nuclear factor erythroid 2-like 2 activation has been proposed to account for its efficacy in multiple sclerosis. Here, we report that dimethyl fumarate inhibits expression of integrin $\alpha 4$ on circulating lymphocytes in experimental autoimmune encephalomyelitis mice and also on activated human Jurkat T cells in a manner distinct from nuclear factor erythroid 2-like 2 activation. Our results offer an alternative mechanism for the efficacy of dimethyl fumarate in multiple sclerosis.

$\alpha 4$ (ITGA4/CD49d). Natalizumab blocks very late antigen-4 (VLA-4, $\alpha 4\beta 1$ heterodimer), which is expressed on leukocytes including lymphocytes and monocytes, and prevents lymphocyte entry into the central nervous system (CNS).^{5,6} In view of natalizumab's action and the reported alteration of adhesion molecules by DMF, we tested the hypothesis that DMF might affect ITGA4 expression on circulating lymphocytes during murine experimental autoimmune encephalomyelitis (EAE) and in human Jurkat T cells.

Material and Methods**EAE induction and treatment**

EAE was induced in 8-week-old C57BL/6 female mice with MOG_{35–55} peptide and clinical scores were recorded

daily.⁷ DMF (Sigma, cat. no. 242926, St. Louis, MO, USA) was suspended in 0.5% methylcellulose or 0.8% hydroxypropyl methylcellulose solution and sonicated to produce a uniform suspension. For prevention studies, mice were treated with DMF (50 and 100 mg/kg, p.o., s.i.d. or b.i.d.) as compared to fingolimod (0.1 mg/kg, p.o., s.i.d.) from days 0 to 30 after immunization. For therapeutic studies, mice were treated with DMF (100 mg/kg, p.o., b.i.d.) or fingolimod (0.1 mg/kg, p.o., s.i.d.) from days 17 to 30 after immunization. Control mice were treated with vehicle solution.

Analysis of blood cells

Complete blood counts (CBCs) were carried out on fresh blood samples collected in BD Microtainer tubes (BD Biosciences, San Jose, CA, USA) containing EDTA (Ethylenediaminetetraacetic acid) and processed at the University of California, San Diego Hematology and Coagulation Core Laboratory. White blood cells (WBCs) were immunolabeled with FITC (fluorescein isothiocya-

nate)-anti-CD3, PE (phycoerythrin)-anti-B220, or PerCP (Peridinin Chlorophyll Protein Complex)-Cy5-anti-CD49d antibodies (eBioscience, San Diego, CA, USA) and analyzed using a BD LSR-II flow cytometer (BD Biosciences, San Jose, CA, USA), with appropriate controls.

Jurkat T cells

Jurkat T cells were maintained in (Roswell Park Memorial Institute) RPMI-1640 supplemented with 10% (fetal bovine serum) FBS, 50 μ mol/L 2-mercaptoethanol and penicillin/streptomycin. Jurkat T cells (2.5×10^5 cells) were added to 96-well round bottom plates with varied concentrations of DMF and tert-Butylhydroquinone (tBHQ), an activator of Nrf2, in the presence or absence of anti-CD3 and anti-CD28 antibodies (1 μ g/mL; BioLegend, San Diego, CA, USA). The cells were immunostained with FITC-anti-CD49d antibody (BioLegend) 42 h after stimulation, and analyzed using a BD LSR-II flow cytometer.

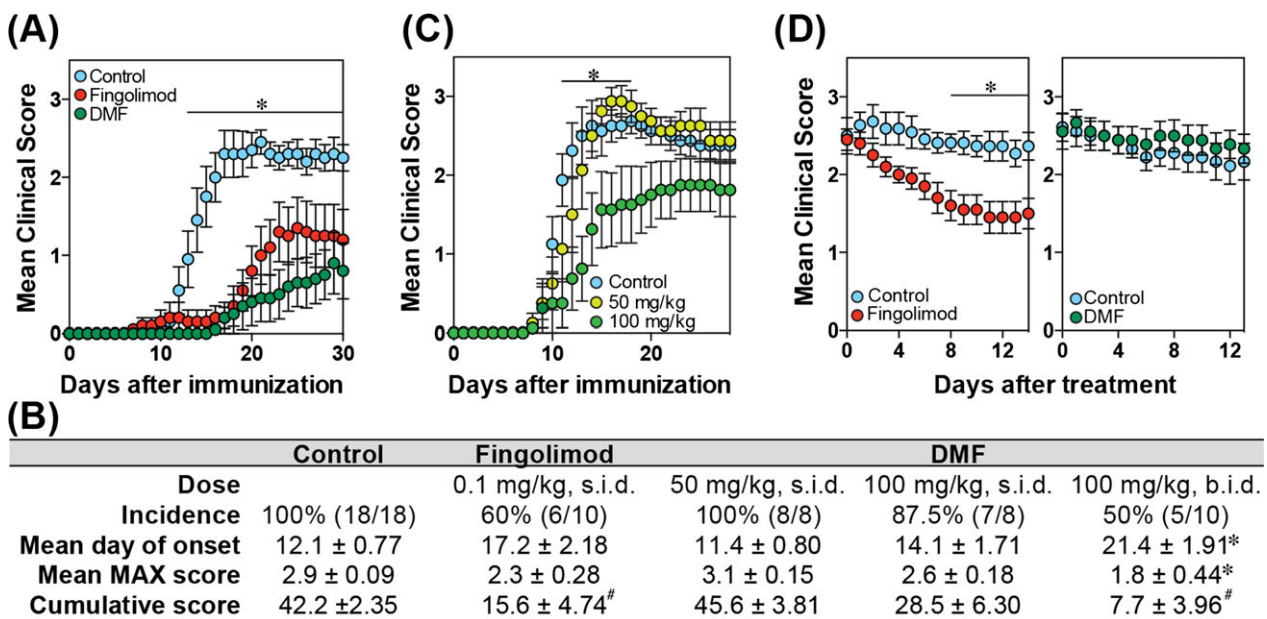


Figure 1. DMF shows prevention but not therapeutic efficacy in EAE. (A) Preventative effects of DMF and fingolimod. DMF (100 mg/kg per b.i.d.) and fingolimod (0.1 mg/kg per s.i.d.) were orally administered into EAE mice from days 0 to 30 after immunization. The clinical scores were assessed daily. Data represent mean \pm SEM ($n = 10$, $P < 0.0001$; by two-way ANOVA). * $P < 0.01$ for both DMF and fingolimod as compared to controls, by Bonferroni's multiple comparisons test. (B) Clinical parameters of EAE mice treated with DMF and fingolimod. * $P < 0.05$, [#] $P < 0.01$ versus nontreatment control by Kruskal–Wallis test with Dunn's multiple comparisons test. (C) Preventative effects of DMF. DMF (50 and 100 mg/kg per s.i.d.) was orally administered into EAE mice from days 0 to 28 after immunization. The clinical scores were assessed daily. Data represent mean \pm SEM ($n = 8$, $P < 0.05$; by two-way ANOVA). * $P < 0.05$ for 100 mg/kg treatment as compared to control by Bonferroni's multiple comparisons test. (D) Treatment effects. EAE mice were treated with DMF ($n = 11$) or fingolimod ($n = 9$) for 14 days (days 17–30). (left) Clinical scores of EAE in fingolimod treatment ($P < 0.01$, by two-way ANOVA), * $P < 0.05$ versus nontreatment controls by Bonferroni's multiple comparisons test. (right) Clinical scores of EAE in DMF treatment ($n = 9$). Data represent mean \pm SEM. DMF, dimethyl fumarate; EAE, experimental autoimmune encephalomyelitis; ANOVA, analysis of variance.

Statistical analyses

Results were expressed as means ± SEM. As appropriate, data were analyzed statistically by Student’s *t* test, Kruskal–Wallis test with Dunn’s multiple comparisons test, and two-way analysis of variance (ANOVA) with Bonferroni’s multiple comparisons test.

Results

DMF shows prevention but not therapeutic activity in EAE

Preventative effects of DMF on EAE were assessed by b.i.d. dosing as compared to a positive control (fingolimod). DMF and fingolimod significantly affected the development and severity of EAE as shown by lower clinical scores, decreased incidence, and delayed onset (Fig. 1A

and B). We also tested the preventative effects of daily (s.i.d.) DMF dosing on EAE (Fig. 1C), however, this paradigm showed inefficient (albeit significant) prevention of EAE (Fig. 1B and C).

To investigate therapeutic effects of DMF, DMF was delivered b.i.d near peak clinical scores. DMF treatment had no effect on therapeutic clinical scores even after 14 days of b.i.d. treatment (Fig. 1D). As expected, fingolimod (positive control) produced a reduction in clinical scores as compared to control groups.

DMF inhibits ITGA4 expression on EAE lymphocytes, without changing total WBC counts

CBC tests were carried out to examine if DMF shared fingolimod’s known lymphopenic effects on EAE (Fig. 2A). DMF treatment did not significantly affect blood cell

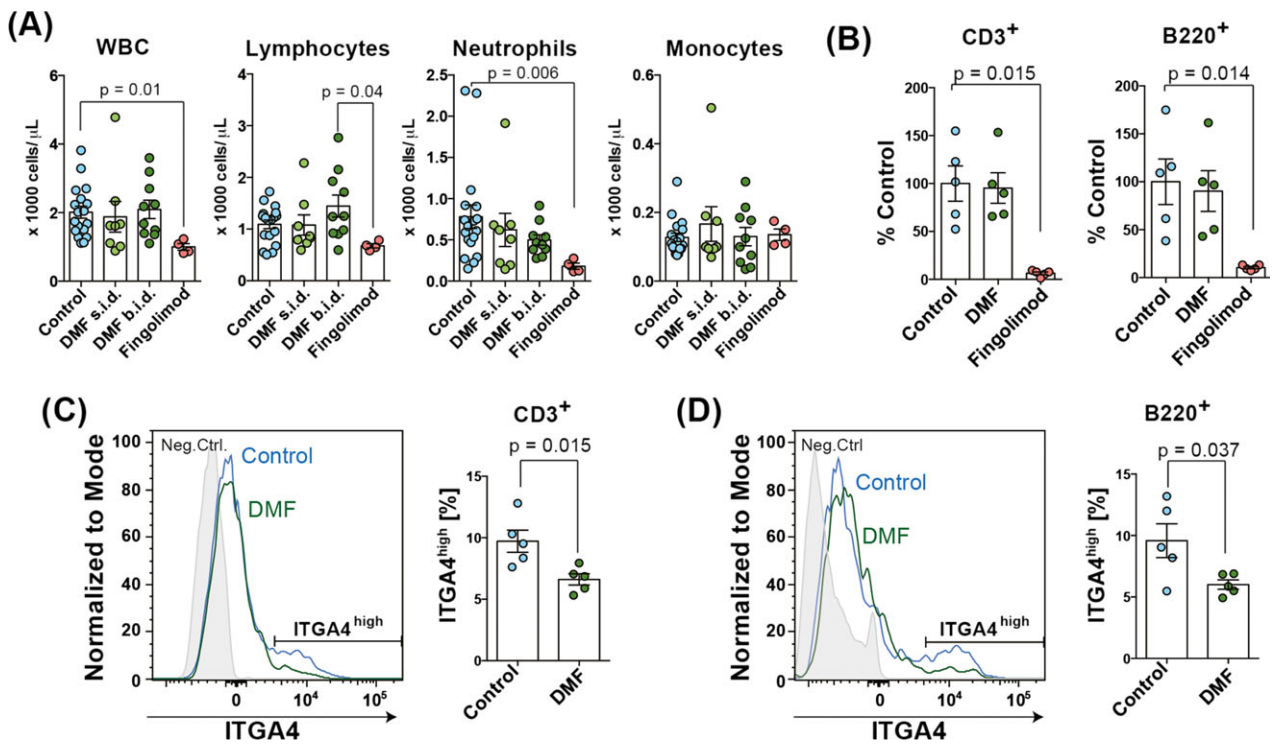


Figure 2. DMF reduces ITGA4 expression on T and B lymphocytes from EAE mice with insignificant effects on blood cell subsets. (A) Total numbers of leukocyte subsets from DMF (days 0–30) and fingolimod (days 17–30)-treated EAE mice. Each point represents a single animal and the data represent means ± SEM. *P* values were analyzed by Kruskal–Wallis test with Dunn’s multiple comparisons test. (B) The relative proportion of CD3⁺ T cells and B220⁺ B cells in the blood of DMF (b.i.d.) and fingolimod-treated EAE mice (days 0–30) as compared to controls. Each point represents a single animal and the data represent mean ± SEM. *P* values were analyzed by Kruskal–Wallis test with Dunn’s multiple comparisons test. (C and D) Flow cytometric analysis of ITGA4 expression on CD3⁺ T cells (C) and B220⁺ B cells (D) from the blood of control and DMF (b.i.d.)-treated EAE mice (days 0–30). Unstained cells serve as negative controls and are represented by the filled histogram in each plot. Percentages of ITGA4^{high} population (gate indicated in the histograms) are plotted. Each point represents a single animal and the data represent mean ± SEM. *P* values were analyzed by Student’s *t* test. DMF, dimethyl fumarate; ITGA4, integrin α 4; EAE, experimental autoimmune encephalomyelitis.

subset levels, although it trended towards mild lymphocytosis. In contrast, fingolimod treatment reduced the level of peripheral WBCs, lymphocytes, and neutrophils (no change in monocyte levels) as anticipated.⁸ Furthermore, the relative proportion of CD3⁺ T cells and B220⁺ B cells in DMF-treated EAE mice showed no difference versus controls, whereas the relative proportion of these cell types was reduced in fingolimod-treated EAE mice (Fig. 2B).

Alteration of adhesion molecules by DMF and a possible natalizumab-like activity including mild lymphocytosis,⁵ led us to examine ITGA4 expression on circulating lymphocytes by flow cytometry (Fig. 2C and D). Without affecting the number of lymphocytes, DMF treatment significantly inhibited ITGA4 expression on both CD3⁺ T cells (30% reduction, Fig. 2C) and B220⁺ B cells (40% reduction, Fig. 2D), most notably in the ITGA4^{high} population. These results indicate that DMF downregulates ITGA4 expression on lymphocytes.

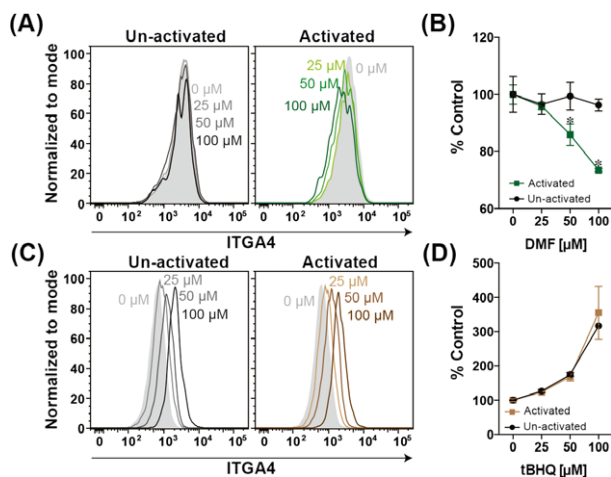


Figure 3. DMF exposure reduces ITGA4 expression on activated Jurkat T cells, contrasting with increased expression by an Nrf2 activator. (A and B) DMF reduces ITGA4 expression. (A) A representative histogram is shown from two independent experiments. Control cells (0 $\mu\text{mol/L}$) are represented by the filled histogram. (B) ITGA4 expression levels were normalized to the mean fluorescent intensity of 0 $\mu\text{mol/L}$ DMF ($P < 0.0001$; by two-way ANOVA). $*P < 0.001$ as compared to controls (black line) by Bonferroni's multiple comparisons test. The data represent mean \pm SD ($n = 3$). (C and D) tBHQ increases ITGA4 expression. (C) A representative histogram is shown from two independent experiments. Control cells (0 $\mu\text{mol/L}$) are represented by the filled histogram. (D) ITGA4 expression levels were normalized to the mean fluorescent intensity of 0 $\mu\text{mol/L}$ tBHQ, and the data represent mean \pm SD ($n = 2$). DMF, dimethyl fumarate; ITGA4, integrin $\alpha 4$; Nrf2, nuclear factor erythroid 2-like 2; ANOVA, analysis of variance; tBHQ, tert-Butylhydroquinone.

DMF inhibits ITGA4 expression on activated human Jurkat T cells in a manner distinct from Nrf2 activation

Toward validating murine results with EAE as potentially relevant to MS, ITGA4 expression was assessed on human Jurkat T cells in culture (Fig. 3A and B). Under basal (un-activated) conditions, DMF exposure did not produce significant changes in ITGA4 expression. In contrast, under activated conditions (antibody-mediated crosslinking of CD3 and CD28), DMF inhibited ITGA4 expression in a concentration-dependent manner. These data support selective effects of DMF on activated lymphocytes to reduce cell surface ITGA4 expression.

To assess relationships between Nrf2 activation and DMF-dependent changes in ITGA4 expression, both un-activated and activated Jurkat T cells were cultured with an activator of Nrf2, tBHQ.⁹ In stark contrast to DMF, tBHQ increased ITGA4 expression in both activated and un-activated Jurkat T cells in a concentration-dependent manner (Fig. 3C and D). These results support human relevance of DMF in reducing ITGA4 expression, which appears to be distinct from and counter-regulatory to Nrf2 activation.

Discussion

In this study, we show that DMF inhibited ITGA4 expression on CD3⁺ T and B220⁺ B cells in EAE mice, implicating downregulation of $\alpha 4\beta 1$ integrin (VLA-4) as well as a distinct integrin heterodimer, $\alpha 4\beta 7$ integrin. Consistent with these results, natalizumab-treated mice and both CD4⁺ T-cell-specific and CD19⁺ B-cell-specific ITGA4 knockout mice exhibit milder EAE disease.^{10–12} Supporting relevance to efficacy in MS is the consistent effect of DMF in reducing ITGA4 expression on activated human Jurkat T cells in a manner distinct from Nrf2 activation. Other possible mechanisms of action that are not ruled out and were not assessed by this study include DMF acting through hydroxycarboxylic acid receptor 2.¹³

Our data that ITGA4^{high} populations were selectively affected by DMF treatment may have clinical implications. The DEFINE¹⁴ and CONFIRM studies¹⁵ on relapsing MS observed that DMF was more effective in younger patients than older patients. VLA-4 levels on CD3⁺ T cells are significantly higher in younger adults ($\sim 20\%$),¹⁶ therefore younger patients may be more responsive to DMF exposure that selectively affects ITGA4^{high} populations. It is also notable that, in the PRISMS trial,¹⁷ interferon β -1a (IFN β 1a) treatment also reduced VLA-4 expression by about 25% and the responders to IFN β 1a also showed higher baseline levels of VLA-4 than nonresponders. These results support the reduction in VLA-4 expression

on lymphocytes as a shared mechanism amongst several MS-modifying drugs including DMF. The observed differences in DMF efficacy between preventative and therapeutic paradigms are also consistent with this shared mechanism as an established anti-VLA-4 antibody treatment is similarly ineffective in a therapeutic paradigm and moreover, exacerbates EAE.¹⁸

VLA-4 inhibition is associated with a serious adverse event, PML, as has been well documented in natalizumab use.⁵ From this perspective, VLA-4 inhibition by DMF could help to explain recent PML cases.^{3,4} Considering results of the PRISMS trial,¹⁷ a recent case of PML in an MS patient (with a common variable immunodeficiency syndrome) after IFN β 1a monotherapy supports the role of VLA-4 in PML independent of natalizumab or DMF treatment.¹⁹ However, the much lower incidence of PML in both the interferon and DMF cases, as compared to natalizumab, underscores the existence of additional variables contributing to PML. The blockade of VLA-4 on lymphocytes by natalizumab dampens immuno-surveillance that may cause PML,⁶ whereas selective actions of DMF on ITGA4^{high} lymphocytes could reduce the number of circulating encephalitogenic cells,²⁰ which is also consistent with the preventative but not therapeutic effects of DMF in EAE. Thus, this putative mechanism offers a possible explanation for both DMF efficacy and rare cases of PML, underscoring a need for balance between efficacy and adverse events mediated by the same molecular target.

Acknowledgments

This work was supported by the National Institutes of Health (MH051699, NS048478, DA019674; J. C.), research grants from Novartis (J. C.), and the Human Frontier Science Program (Y. K.). We thank Danielle Jones for editorial assistance.

Author Contributions

Y. K., A. G., R. R. R., and J. C. designed research and wrote the manuscript. Y. K. and A. G. performed experiments and analyzed data. J. C. supervised the study.

Conflict of Interest

Y. K., A. G., and R. R. R. declare no competing financial interests. J. C. received honoraria, consulting fees and/or grant support from Biogen-Idec and Novartis.

References

1. Phillips JT, Fox RJ. BG-12 in multiple sclerosis. *Semin Neurol* 2013;33:56–65.

2. Rubant SA, Ludwig RJ, Diehl S, et al. Dimethylfumarate reduces leukocyte rolling in vivo through modulation of adhesion molecule expression. *J Invest Dermatol* 2008;128:326–331.
3. Nieuwkamp DJ, Murk JL, van Oosten BW, et al. PML in a patient without severe lymphocytopenia receiving dimethyl fumarate. *N Engl J Med* 2015;372:1474–1476.
4. Rosenkranz T, Novas M, Terborg C. PML in a patient with lymphocytopenia treated with dimethyl fumarate. *N Engl J Med* 2015;372:1476–1478.
5. Hauser SL, Weiner HL. Natalizumab: immune effects and implications for therapy. *Ann Neurol* 2006;59:731–732.
6. Korallnik IJ. Progressive multifocal leukoencephalopathy revisited: has the disease outgrown its name? *Ann Neurol* 2006;60:162–173.
7. Kihara Y, Matsushita T, Kita Y, et al. Targeted lipidomics reveals mPGES-1-PGE2 as a therapeutic target for multiple sclerosis. *Proc Natl Acad Sci USA* 2009;106:21807–21812.
8. Groves A, Kihara Y, Chun J. Fingolimod: direct CNS effects of sphingosine 1-phosphate (S1P) receptor modulation and implications in multiple sclerosis therapy. *J Neurol Sci* 2013;328:9–18.
9. Turley AE, Zagorski JW, Rockwell CE. The Nrf2 activator tBHQ inhibits T cell activation of primary human CD4 T cells. *Cytokine* 2015;71:289–295.
10. Lehmann-Horn K, Sagan SA, Bernard CC, et al. B-cell very late antigen-4 deficiency reduces leukocyte recruitment and susceptibility to central nervous system autoimmunity. *Ann Neurol* 2015;77:902–908.
11. Steinman L, Zamvil SS. How to successfully apply animal studies in experimental allergic encephalomyelitis to research on multiple sclerosis. *Ann Neurol* 2006;60:12–21.
12. Glatigny S, Duhon R, Arbelaez C, et al. Integrin alpha L controls the homing of regulatory T cells during CNS autoimmunity in the absence of integrin alpha 4. *Sci Rep* 2015;5:7834.
13. Chen H, Assmann JC, Krenz A, et al. Hydroxycarboxylic acid receptor 2 mediates dimethyl fumarate's protective effect in EAE. *J Clin Invest* 2014;124:2188–2192.
14. Bar-Or A, Gold R, Kappos L, et al. Clinical efficacy of BG-12 (dimethyl fumarate) in patients with relapsing-remitting multiple sclerosis: subgroup analyses of the DEFINE study. *J Neurol* 2013;260:2297–2305.
15. Hutchinson M, Fox RJ, Miller DH, et al. Clinical efficacy of BG-12 (dimethyl fumarate) in patients with relapsing-remitting multiple sclerosis: subgroup analyses of the CONFIRM study. *J Neurol* 2013;260:2286–2296.
16. Crooks CV, Cross ML, Wall CR. Age-related differences in integrin expression in peripheral blood lymphocytes. *Immun Ageing* 2010;7:5.
17. Soilu-Hanninen M, Laaksonen M, Hanninen A, et al. Downregulation of VLA-4 on T cells as a marker of long

- term treatment response to interferon beta-1a in MS. *J Neuroimmunol* 2005; 167:175–182.
18. Theien BE, Vanderlugt CL, Eagar TN, et al. Discordant effects of anti-VLA-4 treatment before and after onset of relapsing experimental autoimmune encephalomyelitis. *J Clin Invest* 2001;107:995–1006.
 19. Lehmann HC, Kruger K, Fink GR, Schroeter M. Progressive multifocal leukoencephalopathy after interferon beta-1a monotherapy. *J Neurol* 2015;262:771–773.
 20. Baron JL, Madri JA, Ruddle NH, et al. Surface expression of alpha 4 integrin by CD4 T cells is required for their entry into brain parenchyma. *J Exp Med* 1993;177:57–68.