



Contents lists available at ScienceDirect

## Journal of Pharmaceutical Analysis

journal homepage: [www.elsevier.com/locate/jpa](http://www.elsevier.com/locate/jpa)  
[www.sciencedirect.com](http://www.sciencedirect.com)

## Original Research Article

## Screening potential mitochondria-targeting compounds from traditional Chinese medicines using a mitochondria-based centrifugal ultrafiltration/liquid chromatography/mass spectrometry method

Xing-Xin Yang<sup>a,b,c,1</sup>, Yu-Zhen Zhou<sup>b,1</sup>, Feng Xu<sup>a</sup>, Jie Yu<sup>c</sup>, Gegentana<sup>a</sup>, Ming-Ying Shang<sup>a</sup>, Xuan Wang<sup>b,\*</sup>, Shao-Qing Cai<sup>a,\*</sup><sup>a</sup> Department of Natural Medicines, School of Pharmaceutical Sciences, Peking University, 38 Xueyuan Road, Beijing 100191, PR China<sup>b</sup> Department of Chemical Biology, School of Pharmaceutical Sciences, Peking University, 38 Xueyuan Road, Beijing 100191, PR China<sup>c</sup> College of Pharmaceutical Science, Yunnan University of Traditional Chinese Medicine, 1076 Yuhua Road, Kunming 650500, Yunnan Province, PR China

## ARTICLE INFO

## Article history:

Received 8 December 2017

Received in revised form

7 June 2018

Accepted 8 June 2018

Available online 15 June 2018

## Keywords:

Mitochondria

Bioactive constituents

Traditional Chinese medicines

Centrifugal ultrafiltration

Liquid chromatography/mass spectrometry

## ABSTRACT

Mitochondria regulate numerous crucial cell processes, including energy production, apoptotic cell death, oxidative stress, calcium homeostasis and lipid metabolism. Here, we applied an efficient mitochondria-based centrifugal ultrafiltration/liquid chromatography/mass spectrometry (LC/MS) method, also known as screening method for mitochondria-targeted bioactive constituents (SM-MBC). This method allowed searching natural mitochondria-targeting compounds from traditional Chinese medicines (TCMs), including *Puerariae Radix* (PR) and *Chuanxiong Radix* (CR). A total of 23 active compounds were successfully discovered from the two TCMs extracts. Among these 23 hit compounds, 17 were identified by LC/MS, 12 of which were novel mitochondria-targeting compounds. Among these, 6 active compounds were analyzed in vitro for pharmacological tests and found able to affect mitochondrial functions. We also investigated the effects of the hit compounds on HepG2 cell proliferation and on loss of cardiomyocyte viability induced by hypoxia/reoxygenation injury. The results obtained are useful for in-depth understanding of mechanisms underlying TCMs therapeutic effects at mitochondria level and for developing novel potential drugs using TCMs as lead compounds. Finally, we showed that SM-MBC was an efficient protocol for the rapid screening of mitochondria-targeting constituents from complex samples such as PR and CR extracts.

© 2018 Xi'an Jiaotong University. Production and hosting by Elsevier B.V. This is an open access article under the CC BY-NC-ND license (<http://creativecommons.org/licenses/by-nc-nd/4.0/>).

## 1. Introduction

Mitochondria play a crucial role in maintaining cellular life and are involved in various significant bio-functions and metabolic pathways, including calcium homeostasis, thermogenesis, gluconeogenesis, citric acid cycle,  $\beta$ -oxidation of fatty acids, urea cycle, electron transport chain and oxidative phosphorylation that end with ATP generation [1]. The integrity of mitochondrial function is fundamental to cellular homeostasis. Consequently, mitochondria dysfunctions will contribute to many diseases with a great diversity of clinical appearances, such as neurodegenerative disorders, ischemia-reperfusion injury, diabetes, aging, inherited mitochondrial diseases and most importantly, cancer [2]. As mitochondria are key modulators of cellular homeostasis, mitochondrially-targeted compounds

that remedy mitochondrial dysfunctions represent an attractive approach for the treatment of human disorders [3–5].

Traditional Chinese medicines (TCMs) have a long history of clinical testing and reliable therapeutic efficacy, which have gained attention as excellent sources of bioactive compounds for the discovery of new drugs [6]. A rapidly growing number of literatures proposed that many TCMs could regulate mitochondrial functions to perform their pharmaceutical efficacy [7]. For example, extracts of *Puerariae Radix* (PR) and components of *Chuanxiong Radix* (CR) have protective effects on mitochondria [8,9]. However, bioactive constituents binding to mitochondria in TCMs are almost unrecognized so far, hampering the enhancement of our comprehension about therapeutic principles of TCMs, and the development of new potential drugs from TCMs. Disclosing the presence of bioactive substances targeting to mitochondria in TCMs has thus become of utmost importance.

The traditional activity-guided isolation procedure for complex mixtures is a labor-intensive, time-consuming, and expensive process, and it is often invalid for the direct search of bioactive constituents from complex samples [10]. High-throughput

Peer review under responsibility of Xi'an Jiaotong University.

\* Corresponding authors.

E-mail addresses: [xuanwang6818@bjmu.edu.cn](mailto:xuanwang6818@bjmu.edu.cn) (X. Wang), [sqcai@bjmu.edu.cn](mailto:sqcai@bjmu.edu.cn) (S.-Q. Cai).<sup>1</sup> Both authors contributed equally to this work.

screening [11] and high-content screening methods [12] have also been used for the efficient identification of mitochondria-targeting compounds, but they cannot be applied for direct screening of multiple ligands from complex agents simultaneously. In our previous study, we developed an efficient mitochondria-based centrifugal ultrafiltration/liquid chromatography/mass spectrometry method, which is called screening method for mitochondria-targeted bioactive constituents (SM-MBC), and our method is compatible with the searching of mitochondria-targeting compounds from complex samples [7]. It was confirmed that this method simultaneously possessed excellent recognition, separation and identification abilities, and displayed advantages as efficient use of labor, a simple procedure, and low time and sample requirements. Thus, SM-MBC, preventing unnecessary resource utilization in downstream isolation of inactive compounds from extracts used in the screening process, can be performed to the direct screening of mitochondria-targeting compounds in complex matrix such as TCMs.

In the present study, we applied SM-MBC for the direct screening of natural mitochondria-targeting compounds from TCMs (i.e. PR and CR). Bioactive molecules selectively linked to mitochondria were isolated by centrifugal ultrafiltration (CU). The isolated fractions were then collected and injected into liquid chromatography/mass spectrometry (LC/MS) for rapid isolation and identification. Our screening results were meaningful for in-depth understanding of mechanisms underlying TCMs action, but also for the development of mitochondrial modulators from TCMs. Moreover, SM-MBC was shown to be an efficient method for the rapid screening of mitochondria-targeting compounds from complex samples.

## 2. Materials and methods

### 2.1. Chemicals and materials

Puerarin (lot no. G-008-131221), daidzein (lot no. D-016-131102) and daidzin (lot no. D-013-131111) were purchased from Chengdu Herbpurify Co., Ltd. (Chengdu, China). 3'-methoxypuerarin (lot no. 131217), 3'-hydroxypuerarin (lot no. 131416), senkyunolide A (lot no. 140914), ligustilide (lot no. 131204) and levistolide A (lot no. 130910) were purchased from Chengdu Pufeide Biological Technology Co., Ltd. (Chengdu, China). Formononetin (lot no. GMED-0013) was provided by Hong Kong Jockey Club Institute of Chinese Medicine (Hongkong, China). Dulbecco's Modified Eagle's Medium (DMEM) and Bicinchoninic Acid (BCA) protein determination kit were obtained from M&C Gene Technology (Beijing) Ltd. (Beijing, China). DMEM/F12 and fetal bovine serum (FBS) were purchased from Gibco (Grand Island, NY, USA). WST-8 Kit (2-(2-methoxy-4-nitrophenyl)-3-(4-nitrophenyl)-5-(2,4-disulfophenyl)-2H-tetrazolium, monosodium salt) was purchased from Neuronbc<sup>®</sup> (Beijing, China). Nycodenz was purchased from Axis-shield PoC AS (Oslo, Norway). HPLC grade methanol and acetonitrile were provided by Fisher Scientific (Fairlawn, NJ, USA). Deionized water was purified using a Milli-Q Water Purification System (Millipore, Billerica, MA, USA). Calycosin was isolated from *Astragalus Radix* by our group. The structure was verified by LC/MS and nuclear magnetic resonance (NMR), and the purity was found to be > 98% by HPLC-DAD (based on the percentage of total peak area). All other reagents used were of analytical reagent grade or higher.

PR (purchase date 2014/04) and CR (purchase date 2009/12) were purchased from the Tianheng Drug Store (Beijing, China) and the Hebei Anguo Yaoxing Pharmaceutical Co. (Anguo, Hebei, China), respectively. All the samples were authenticated by Professor Shao-Qing Cai and the voucher specimens of PR (No. 7546) and CR

(No. 6332) have been deposited in the Herbarium of Pharmacognosy, School of Pharmaceutical Sciences, Peking University (Beijing, China).

### 2.2. Experimental animals

Experimental protocols involving conscious animals were performed in accordance with the Guide for the Care and Use of Laboratory Animals published by the US National Institutes of Health and approved by the Biomedical Ethical Committee of Peking University (No. SYXK2011-0039). Healthy male Sprague-Dawley rats (300 ± 50 g) provided by the Department of Laboratory Animal Science, Peking University Health Science Center (Beijing, China) were used in this study. Rats were bred under an environmentally controlled room with *ad libitum* access to food and tap water. In addition, neonatal Sprague-Dawley rats (< 24 h) provided by the Vital River Laboratories (Beijing, China) were used for the primary culture of cardiomyocytes. All efforts were made to minimize the number of the animals used and their suffering.

### 2.3. Preparation of analytical solutions

Working solutions of PR (450 mg/mL) and CR (600 mg/mL) were prepared by dissolving the freeze-drying powder of PR and CR extract (the preparation methods are described in the [Supplementary material](#)) in dimethyl sulfoxide (DMSO). For the pharmacological test, analytical solutions of standard compounds from PR and CR extracts, including perarin, daidzein, daidzin, formononetin, ligustilide and levistolide A were prepared in DMSO and diluted with physiological saline to the demanded concentration. All solutions were stored at 4 °C in the dark.

### 2.4. Preparation of mitochondrial suspension

Mitochondrial suspension was prepared as previously described [7]. Briefly, hearts isolated from Sprague-Dawley rats were quickly placed into ice-cold isolation buffer (buffer A: 210 mM mannitol, 70 mM sucrose, 10 mM Tris base, 1 mM EDTA and 0.5 mM EGTA, pH 7.4) to remove blood, minced into 1 mm<sup>3</sup> pieces, and homogenized by using a Dounce glass homogenizer (Kimble/Kontes, Vineland, NJ, USA) with buffer B (buffer A plus a mixture of 1 mM PMSF and protease inhibitor cocktail). After centrifugation at 1000 × g for 10 min, the supernatant was collected and centrifuged at 10,000 × g for 10 min to obtain crude mitochondria. Nycodenz was dissolved to 34%, 30%, 25%, 23% and 20% (w/v) with buffer B. The crude mitochondria were resuspended in 1.3 mL of 25% Nycodenz and layered on a discontinuous Nycodenz gradient of 0.5 mL of 34% and 0.9 mL of 30%, which was topped off with 0.9 mL of 23% and finally 0.4 mL of 20%. The gradient was centrifuged at 52,000 × g for 90 min in a Beckman SW 60 Ti rotor (Beckman Coulter, Inc., Fullerton, CA, USA). The band at the 25%/30% interface was collected, diluted with the same volume buffer A and then centrifuged at 10,000 × g for 10 min. The pellet was washed with buffer B and collected as purified mitochondria that were resuspended with buffer A to obtain a 1.0 g/L of mitochondrial suspension. Mitochondrial protein concentration was determined using BCA method. Furthermore, a part of the mitochondrial suspension was persistently heated for 2 h in boiling water to produce denatured mitochondria without their original biological functions.

### 2.5. Screening process with SM-MBC

Screening process using SM-MBC was based on previously reported method (Fig. 1) [7]. Briefly, 5 µL PR working solution and CR working solution were separately incubated with 200 µL of the

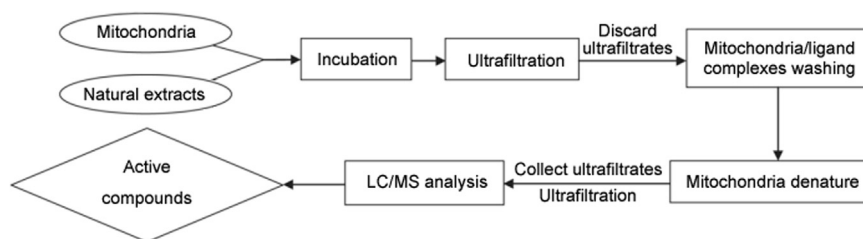


Fig. 1. Schematic representation of the analytical procedure used for the screening of mitochondria-targeting compounds from TCMs extracts by SM-MBC.

mitochondrial suspension at 37 °C for 60 min (90 min for the CR working solution), and then were filtered through a 10 kDa molecular weight cutoff ultrafiltration membrane (Microcon YM-10, Millipore Co., Bedford, MA, USA) by centrifugation at 14,000 × g for 25 min at 4 °C. Pellets entrapped in the membranes were washed three times with 200 μL ammonium acetate buffer (50 mM, pH 7.5) through centrifugation at 14,000 × g at 4 °C for 25 min. Afterward, bound molecules were released from mitochondria by adding 400 μL of 80% aqueous methanol followed by centrifugation at 14,000 × g for 25 min at room temperature. Purified ultrafiltrates were dried under a stream of nitrogen and reconstituted with 100 μL of 80% methanol. Samples containing screened compounds were analyzed by LC/MS (The conditions of LC/MS analysis are described in the [Supplementary material](#)). Control experiments for nonspecific binding were performed in a similar way with denatured mitochondria. LC/MS peaks obtained with and without denatured mitochondria were compared. When the percentage of discrepancy of peak area between experiment and control ( $\Delta P$ ) was > 20%, this increase in peak area indicated a specific binding that was deemed as the mitochondria-targeting compounds.  $\Delta P$  value was calculated using the formula:

$$\Delta P = (P_e - P_c) / P_e \times 100,$$

where  $P_e$  and  $P_c$  are the peak areas in the experiment and control, respectively.

#### 2.6. Determination of mitochondrial permeability transition pore opening in isolated myocardial mitochondria

The opening of the mitochondrial permeability transition pore (mPTP) was determined by  $\text{Ca}^{2+}$ -induced swelling of isolated myocardial mitochondria and was performed to investigate the interaction between the hit compounds and the mitochondria. The mPTP opening results in mitochondrial swelling, which will induce a decrease of absorbance at 520 nm ( $A_{520}$ ). This absorbance fluctuation provides a convenient and frequently used determination of the mPTP opening [7,13]. Briefly, isolated cardiac crude mitochondria (0.25 g/L) were resuspended by swelling buffer (120 mM KCl, 20 mM MOPS, 10 mM Tris-HCl, 5 mM  $\text{KH}_2\text{PO}_4$ , pH 7.4), and then preincubated with tested compounds for 3 min at room temperature followed by the addition of 250 μM  $\text{CaCl}_2$  to induce mPTP opening for 15 min. Afterward, the  $A_{520}$  was immediately measured with UV-VIS Spectrophotometer (Beijing Purkinje General Instrument Co., Ltd., Beijing, China). The experiment was performed five times.

#### 2.7. Evaluation of cancerous cell proliferation

For cancerous cell proliferation assay, aliquots of HepG2 cells ( $2 \times 10^4$  cells/well) were seeded in 96-well plate, and cultivated in DMEM supplemented with 10% FBS at 37 °C in a humidified atmosphere of 5%  $\text{CO}_2$ . Confluent beating cells were then treated

with tested compounds at different concentrations, and imaged using the CloneSelect Imager system (Genetix, UK) after 0, 24, 48, 72 and 96 h treatment. The proliferation curves were drawn with the cell confluence (%) at the indicated time points to evaluate the inhibition effects of compounds on cell proliferation. The assay was performed five times.

#### 2.8. Assessment of cellular viability in cardiomyocyte model of hypoxia/reoxygenation (H/R) injury

Cellular viability was measured using the cell counting kit (CCK)-8 assay, according to the manufacturer's recommendations. Confluent beating cardiomyocytes from neonatal rats primarily cultured for 4 days were exposed to hypoxia for 2 h, and then were incubated with tested compounds. Subsequently treated cells were reoxygenated for 1 h. After experimental treatment, 10 μL of WST-8 solution was added to each well, and cardiomyocytes were incubated for additional 2 h at 37 °C. The absorbance of each well at 450 nm was determined using a SpectraMax M5 microplate reader (Molecular Devices, Sunnyvale, CA, USA). The percentage of cellular viability was calculated by the following formula [14]: % cell viability = (mean absorbance in test wells - mean absorbance in blank wells) / (mean absorbance in negative control well - mean absorbance in blank wells) × 100. The primary culture procedure for cardiomyocytes and the preparation of H/R injury model are reported in the [Supplementary material](#). The assay was performed in triplicate.

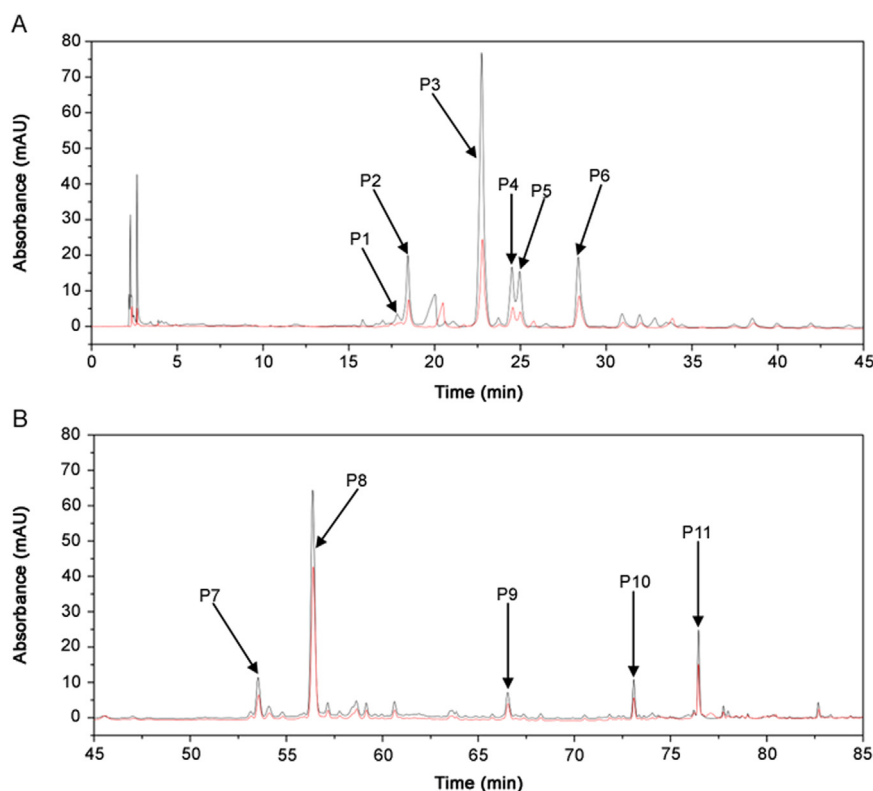
#### 2.9. Data treatment

All data are presented as mean ± SD. For statistical analysis, one-way analysis of variance (ANOVA, Dunnett's method) was performed using SPSS software (13.0 for Windows; SPSS, Chicago, IL, USA).  $P < 0.05$  (two-tailed) was considered significant.

### 3. Results and discussion

#### 3.1. Principle of SM-MBC

SM-MBC was previously developed by combining CU and LC/MS techniques to perform the direct search for mitochondria-targeting compounds in complex samples as TCMs compounds [7]. In this method, active constituents against specific targets in mitochondria could be specifically recognized and isolated. Structural characteristics of corresponding constituents were identified by LC/MS (Fig. 1). SM-MBC showed the recognition, separation and identification capabilities that were sufficiently validated using positive and negative controls, avoiding the use of unnecessary resources on downstream isolation of compounds of little or no value from extracts used in the screening process. Thus, SM-MBC can be efficiently applied for the identification of mitochondria-targeting compounds in complex preparations.



**Fig. 2.** Screening of mitochondria-targeting compounds from PR extract using SM-MBC. Compared with the control, including denatured mitochondria, (red line), HPLC chromatograms of screened PR extract (A, 0–45 min; B, 45–85 min) exhibited 11 peaks (P1–P11), which were enhanced because of specific binding to mitochondria (black line). The conditions for analyzing the PR extract are presented in the [Supplementary material](#).

### 3.2. Effect of screening conditions

The developed SM-MBC was used to identify natural mitochondria-targeting compounds from PR and CR extracts. In order to acquire the best screening performance for active compounds from the extracts and investigate the major influencing factors in SM-MBC, the effects of several screening conditions were investigated, such as mitochondrial concentration, sample concentration and incubation time.

First, different mitochondrial concentrations (0.25, 0.50 and 1.0 g/L) were used for screening the active compounds present in PR and CR extracts. The number of active compounds selected from the two extracts remarkably increased with the increase of mitochondrial concentration (Figs. S1 and S2), which was consistent with the previously-reported screening of other extracts [7]. Therefore, mitochondrial concentration influences SM-MBC sensitivity. Higher mitochondrial concentrations were related to higher sensitivity, which could select more active compounds from TCMs extracts. However, higher mitochondrial concentrations (> 1.0 g/L) will block the ultrafiltration membrane, and 1.0 g/L was the optimum mitochondrial concentration for SM-MBC, enabling the screening of the maximum number of active compounds from TCMs extracts.

Next, three concentrations of PR (2.625, 5.250 and 10.50 g/L) and CR (3.875, 7.750 and 15.50 g/L) samples were separately used for the screening of active compounds. The number of active compounds found from PR and CR extracts increased with higher sample concentrations (Figs. S3 and S4). In particular, 10.50 and 15.50 g/L, the saturated concentrations for the two samples, were respectively found to be the optimal concentrations for the

screening of PR and CR extracts. In addition, we previously confirmed that 7.5 and 2.5 g/L were the optimum for the screening of mitochondria-targeting compounds from other two TCMs extracts [7]. Hence, sample concentration may affect the identification of mitochondria-targeting compounds. The screening of active compounds for different TCMs extracts showed a sizable discrepancy in optimal sample concentration, which may be attributed to the differences of chemical constituents in various TCMs. Hence, the sample concentration should be optimized for each TCM extract analyzed by SM-MBC.

Finally, the effect of different incubation times (30, 60 and 90 min) was investigated. The number of active compounds found in PR and CR extracts increased with the incubation time (Figs. S5 and S6), but identical results were obtained at 60 and 90 min for the PR extract. Thus, 60 min incubation time was sufficient for the screening of the PR extract and 90 min for the screening of the CR extract. Furthermore, we previously found that 60 or 90 min was the optimal incubation time for the screening of active compounds from other two TCMs extracts [7]. Thus, the optimal incubation time for the screening of active compounds from TCMs extracts by SM-MBC might be in the range of 60–90 min, which should be optimized to obtain the best screening performance.

### 3.3. Screening for the potential mitochondria-targeting compounds in TCMs extracts

Some TCMs such as PR [15,16] and CR [17,18] have been suggested to possess a range of pharmaceutical effects, including anti-cancer, cardio-, hepatic- and neuro-protection. It has been reported that several substances in PR, such as puerarin [13], daidzin

**Table 1**  
LC/MS data and assignment of the 11 mitochondria-targeting compounds in the PR extract.

NO.	t <sub>R</sub> (min)	ΔP <sup>b</sup> (%, n=3)	UV λ <sub>max</sub> (nm)	[M+H] <sup>+</sup> m/z	ESI-MS <sup>n</sup> (+) m/z (abundance)	[M-H] <sup>+</sup> m/z	ESI-MS <sup>n</sup> (-) m/z (abundance)	Predicted formula	Meas. (m/z)	Pred. (m/z)	Diff. (ppm)	DBE	Assigned identification
P1	17.811	57.6 ± 16.8	250,300	503.1198	MS <sup>2</sup> (503):255(100) MS <sup>2</sup> (255):137(100),199(63), 181(59),153(26),157(18),237(18),200(17),129(16),138(15),145(14)	—	—	C <sub>24</sub> H <sub>22</sub> O <sub>12</sub>	503.1198	503.1184	2.78	14	Malonyldaidzin
P2 <sup>a</sup>	18.441	50.8 ± 21.2	248, 289	433.1138	MS <sup>2</sup> (433):283(100),337(60), 313(52),367(49),379(28),323(22),351(17),397(16),415(15),368(13),284(12),338(11) MS <sup>3</sup> (283):211(100),181(97), 237(70),152(69),209(51),153(49)	431.0989	MS <sup>2</sup> (431):283(100), 311(58),255(14), 284(14),227(13) MS <sup>3</sup> (283):227(100), 255(23)	C <sub>21</sub> H <sub>20</sub> O <sub>10</sub>	431.0989	431.0984	1.16	12	3'- Hydroxypuerarin
P3 <sup>a</sup>	22.742	68.4 ± 17.8	248, 305	417.1182	MS <sup>2</sup> (417):267(100),321(59), 297(55),351(47),363(27),307(25),335(16),352(15),381(15),399(14),268(14),322(11) MS <sup>3</sup> (267):195(100),165(71), 129(44),239(33),157(22),149(18)	415.1044	MS <sup>2</sup> (415):267(100), 295(47),268(18), 296(15)	C <sub>21</sub> H <sub>20</sub> O <sub>9</sub>	417.1182	417.1180	0.48	12	Puerarin
P4 <sup>a</sup>	24.507	54.1 ± 20.4	249, 290	447.1298	MS <sup>2</sup> (447):297(100),351(57), 327(54),381(49),393(30),337(22),365(17),382(17),411(16),429(15) MS <sup>2</sup> (297):237(100),282(99), 134(87),265(82),181(63),281(29),152(27),153(24),209(20),226(13)	445.1146	MS <sup>2</sup> (445):282(100), 325(60),297(44),326(19),310(16),283(14)	C <sub>22</sub> H <sub>22</sub> O <sub>10</sub>	445.1146	445.1140	1.35	12	3'-Methoxypuerarin
P5	24.956	49.6 ± 16.7	248, 304	549.1607	MS <sup>2</sup> (549):417(100),351(79), 399(60),267(53),297(52),321(41),418(32),363(29),381(29)	547.1456	MS <sup>2</sup> (547):267(100), 295(79),296(18),268(16) MS <sup>3</sup> (267):223(100), 222(93),224(67), 208(43),237(38),238(32)	C <sub>26</sub> H <sub>28</sub> O <sub>13</sub>	547.1456	547.1457	-0.18	13	Puerarin-xyloside or Mirificin
P6 <sup>a</sup>	28.378	56.3 ± 21.7	250, 300	417.1187	MS <sup>2</sup> (417):255(100),265(17) MS <sup>3</sup> (255):137(100),199(94), 181(54),153(35),129(23),138(23),200(17),157(14),145(13),237(12),165(12),227(10)	415.1040	—	C <sub>21</sub> H <sub>20</sub> O <sub>9</sub>	415.1040	415.1035	1.20	12	Daidzin
P7	53.527	40.2 ± 18.0	286, 313	475.1597	MS <sup>2</sup> (475):313(100),219(26) MS <sup>3</sup> (313):107(100),267(82), 295(60),219(49),201(39)	473.1428	MS <sup>2</sup> (473):267(100), 311(62),252(57) MS <sup>3</sup> (311):252(100) MS <sup>3</sup> (267):252(100)	C <sub>24</sub> H <sub>26</sub> O <sub>10</sub>	475.1597	475.1599	-0.42	12	Sophoraside A
P8 <sup>a</sup>	56.363	47.4 ± 15.3	248, 301	255.0630	MS <sup>2</sup> (255):137(100),199(83), 256(69),181(54),200(31),153(29),257(28),138(23),237(18),227(17),182(16),145(15),157(15),129(11)	253.0498	MS <sup>2</sup> (253):224(100), 255(95),208(71),225(70),209(59),223(44),197(35),180(24),135(24),210(16),169(15) MS <sup>3</sup> (224):195(100)	C <sub>15</sub> H <sub>10</sub> O <sub>4</sub>	253.0498	253.0506	-3.15	11	Daidzein
P9 <sup>a</sup>	66.538	35.1 ± 13.6	259	271.0602	MS <sup>2</sup> (271):153(100),215(42), 197(30),253(24),149(23),145(22),121(19),115(14),131(13)	269.0441	MS <sup>2</sup> (269):271(100), 224(53),180(47),181(45),133(45),159(35),201(33)	C <sub>15</sub> H <sub>10</sub> O <sub>5</sub>	271.0602	271.0601	0.37	11	Genistein

P10 <sup>a</sup>	73.088	38.5 ± 15.2	249, 300	269.0799	MS <sup>2</sup> (269):237(100),253(61), 254(44),213(42),238(26),118 (22),214(15),151(14),198(14),107 (12),271(11)	267.0641	MS <sup>2</sup> (267):252(100)	C <sub>16</sub> H <sub>12</sub> O <sub>4</sub>	269.0799	269.0808	-3.34	11	Formononetin
P11	76.448	35.9 ± 12.5	222, 283, 311	339.1217	MS <sup>3</sup> (237):181(100),154(49) MS <sup>2</sup> (339):163(100),135(25), 321(16),177(12)	337.1077	MS <sup>2</sup> (337):268(100), 281(50),282(20),224(15), 293 (14) MS <sup>3</sup> (268):224(100), 195(29)	C <sub>20</sub> H <sub>18</sub> O <sub>5</sub>	337.1077	337.1081	-1.19	12	Unidentified

<sup>a</sup> Comparison with standards.

<sup>b</sup>  $\Delta P$  was calculated using the following formula:  $\Delta P = (P_e - P_c) / P_e \times 100$ , where  $P_e$  and  $P_c$  are the peak areas in the experiment and control, respectively. Data were obtained from 3 independent experiments and are expressed as the mean ± SD.

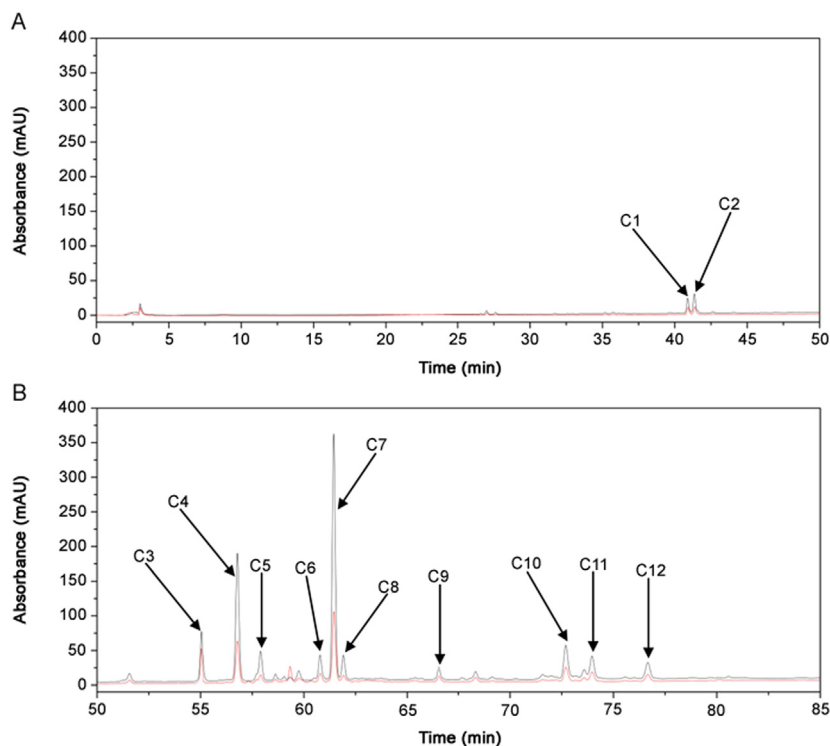
**Table 2**

LC/MS data and assignment of the 12 mitochondria-targeting compounds in the CR extract.

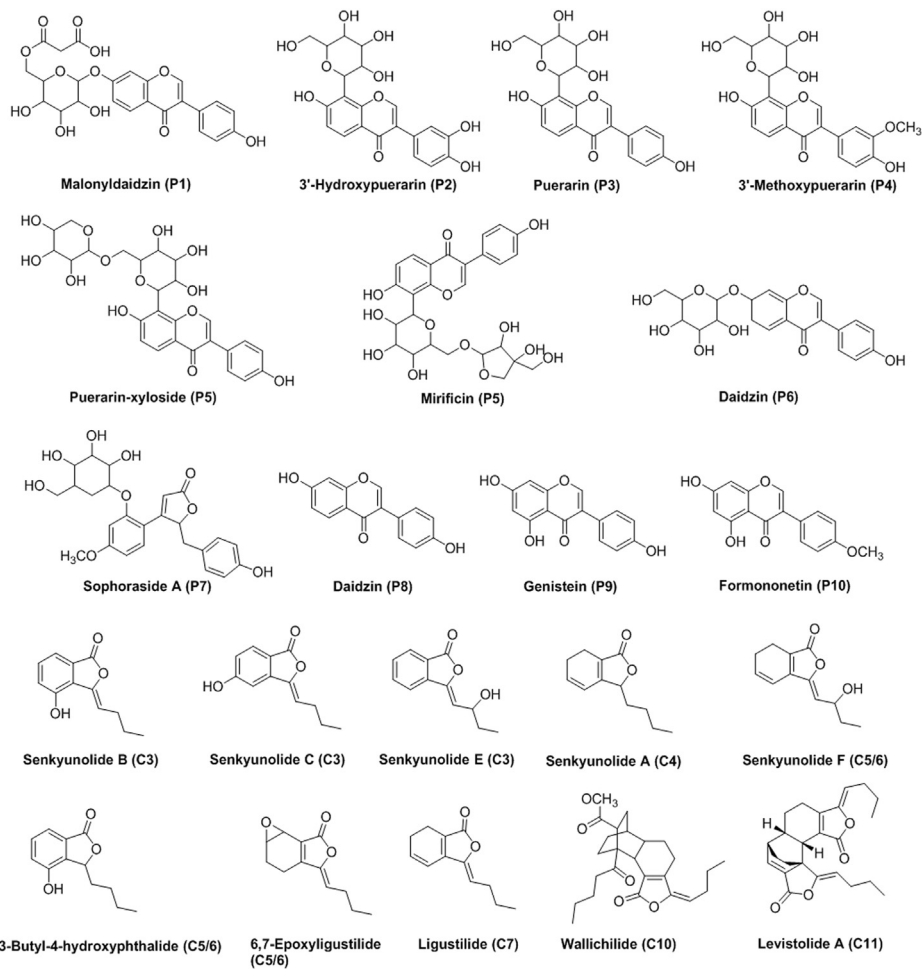
NO.	t <sub>R</sub> (min)	$\Delta P^b$ (%, n=3)	UV $\lambda_{max}$ (nm)	[M+H] <sup>+</sup> m/z	ESI-MS <sup>n</sup> (+) m/z (abundance)	[M-H] <sup>+</sup> m/z	ESI-MS <sup>n</sup> (-) m/z (abundance)	Predicted formula	Meas. (m/z)	Pred. (m/z)	Diff. (ppm)	DBE	Assigned identification
C1	40.890	49.7 ± 15.3	212,263,291,350	—	—	—	—	—	—	—	—	—	Unidentified
C2	41.333	57.0 ± 18.1	231,280,343	—	—	—	—	—	—	—	—	—	Unidentified
C3	54.978	40.3 ± 14.7	213,266,318	—	—	203.0712	MS <sup>2</sup> (203): 160 (100),174(31), 161(10) MS <sup>2</sup> (160): 132(100)	C <sub>12</sub> H <sub>12</sub> O <sub>3</sub>	203.0712	203.0714	-0.98	7	Senkyunolide B/C/E
C4 <sup>a</sup>	56.783	67.7 ± 20.8	279	193.1221	MS <sup>2</sup> (193):147(100),91 (62),105(21)	—	—	C <sub>12</sub> H <sub>16</sub> O <sub>2</sub>	193.1221	193.1223	-1.04	5	Senkyunolide A
C5	57.907	53.1 ± 18.5	228,276	207.0996	—	—	—	C <sub>12</sub> H <sub>14</sub> O <sub>3</sub>	207.0996	207.1016	-9.66	6	Senkyunolide F, 3-Butyl – 4-hydroxyphthalide or 6,7-Epoxylicustilide
C6	60.787	41.2 ± 17.8	220	207.1013	MS <sup>2</sup> (193):105(100),121 (66),137(66), 145(66)	—	—	C <sub>12</sub> H <sub>14</sub> O <sub>3</sub>	207.1013	207.1016	-1.45	6	Senkyunolide F, 3-Butyl – 4-hydroxyphthalide or 6,7-Epoxylicustilide
C7 <sup>a</sup>	61.443	68.4 ± 21.0	206,281,327	191.1059	—	189.0923	—	C <sub>12</sub> H <sub>14</sub> O <sub>2</sub>	191.1059	191.1067	-4.19	6	Ligustilide
C8	61.892	37.8 ± 15.2	210,233,258,312	520.3379	MS <sup>2</sup> (520):502(100),184 (81),503(37) MS <sup>3</sup> (502):163(100)	—	—	C <sub>28</sub> H <sub>45</sub> N <sub>3</sub> O <sub>6</sub>	520.3379	520.3381	-0.38	8	Unidentified
C9	66.548	43.0 ± 15.8	256,286,327	500.3302	—	—	—	C <sub>25</sub> H <sub>45</sub> N <sub>3</sub> O <sub>7</sub>	500.3302	500.3330	-5.60	5	Unidentified
C10	72.693	48.1 ± 16.5	220,283	413.2307	MS <sup>2</sup> (413):191(100),381 (8),223(3), 283(2)	—	—	C <sub>25</sub> H <sub>32</sub> O <sub>5</sub>	413.2307	413.2323	-3.87	10	Wallichilide
C11 <sup>a</sup>	73.945	36.6 ± 14.1	230,283	381.2066	MS <sup>2</sup> (381): 191(100),335 (8),173(6), 363(5)	—	—	C <sub>24</sub> H <sub>28</sub> O <sub>4</sub>	381.2066	381.2060	1.57	11	Levistolide A
C12	76.663	38.4 ± 12.6	295	—	—	—	—	—	—	—	—	—	Unidentified

<sup>a</sup> Comparison with standards.

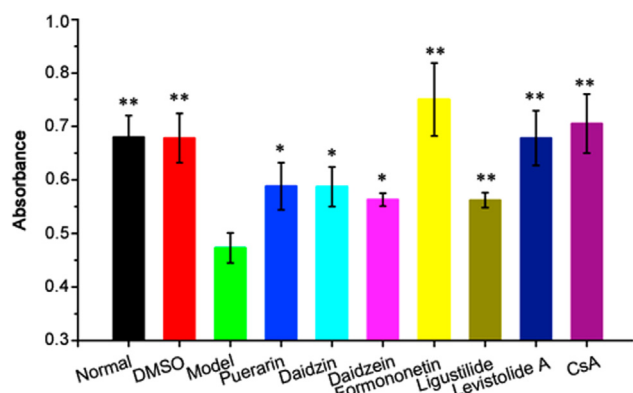
<sup>b</sup>  $\Delta P$  was calculated using the following formula:  $\Delta P = (P_e - P_c) / P_e \times 100$ , where  $P_e$  and  $P_c$  are the peak areas in the experiment and control, respectively. Data were obtained from 3 independent experiments and are expressed as the mean ± SD.



**Fig. 3.** Screening of mitochondria-targeting compounds from CR extract using SM-MBC. HPLC chromatograms of the CR extract (A, 0–50 min; B, 50–85 min) are displayed for the ultrafiltrates, with active mitochondria (black line) and denatured mitochondria (red line) as the control. 12 peaks (C1–C12) showed a significant area enhancement compared with the control. The conditions for detecting the CR extract are available in the Supplementary material.



**Fig. 4.** Chemical structures of the 17 assigned mitochondria-targeting compounds identified in PR and CR extracts.



**Fig. 5.** Effect of hit compounds on  $\text{Ca}^{2+}$ -induced mPTP opening in suspensions of rat myocardial mitochondria. Myocardial mitochondria were preincubated with puerarin (75  $\mu\text{M}$ ), daidzin (140  $\mu\text{M}$ ), daidzein (100  $\mu\text{M}$ ), formononetin (100  $\mu\text{M}$ ), ligustilide (210  $\mu\text{M}$ ), levistolide A (100  $\mu\text{M}$ ) and cyclosporin A (10  $\mu\text{M}$ ). Data were obtained from 5 independent measurements and expressed as mean  $\pm$  SD. \* $P < 0.05$ , \*\* $P < 0.01$ , compared with model group.

[19,20], daidzein [21,22], genistein [23,24] and formononetin [25,26], and one compound (ligustilide [27]) in CR could remedy mitochondrial functions to exert their pharmacological efficacy. However, it is possible that other bioactive constituents present in PR and CR and affecting mitochondrial functions remain unclear, which refrains the interpretation of therapeutic principles of the two TCMs. PR and CR were thus selected to be analyzed in this study. For the first time, SM-MCB was used to identify mitochondria-targeting compounds from PR and CR extracts. Fig. 2 shows the chromatogram of the PR sample analyzed by SM-MCB, with significant area enhancement of 11 peaks (P1–P11) compared with the control containing denatured mitochondria ( $\Delta P > 20\%$ , shown in Table 1), suggesting specific binding with mitochondria. The chemical structure corresponding to each peak was assigned by analyzing UV, MS and  $\text{MS}^n$  information obtained from LC/MS (Table 2) and comparing it with previously reported data [28–32] and standards. Active compounds were identified as nine isoflavones (P1–P6, P8–P11) and one phenylpropanoid (P7).

CR extract was analyzed using the same method, and the obtained chromatograms (Fig. 3) show remarkable enhancement of 12 peaks (C1–C12) compared with the control ( $\Delta P > 20\%$ , shown in Table 2), indicating specific binding with mitochondria. The characterization of the UV, MS and  $\text{MS}^n$  data provided by LC/MS (Table 2) and comparison with previously reported data [33–37]

and standards confirmed that the C1–C12 peaks were phthalides (C3–C7) and their dimmers (C10 and C11).

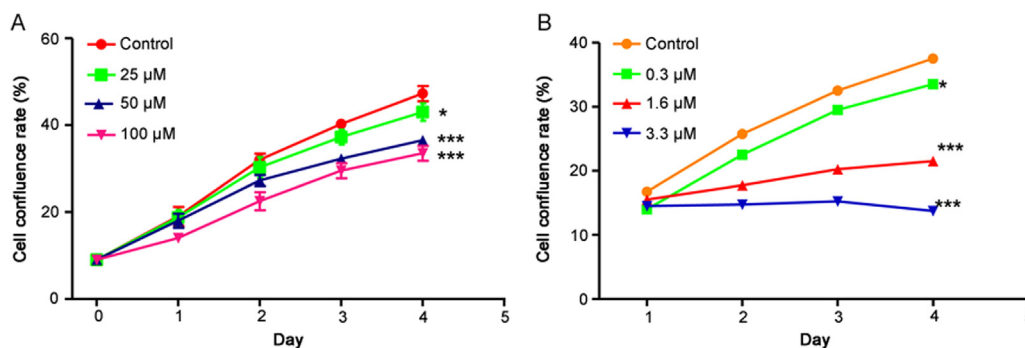
Totally, among these 23 hit compounds, the chemical structures of 17 were identified (Fig. 4). These results further confirmed that SM-MBC could be used as an effective alternative for screening mitochondria-targeting compounds in complex mixtures such as TCMs extracts. The active mitochondria isolated from rat myocardium can recognize target molecules not only through affinity interactions between the molecules and targets on the mitochondrial environments, but also through the electrostatic interaction between them [7], which is helpful for decreasing interference from inactive impurities.

### 3.4. Effects of identified compounds on $\text{Ca}^{2+}$ -induced mPTP opening on isolated myocardial mitochondria

In order to evaluate the capability of identified compounds to regulate mitochondrial functions, a model of  $\text{Ca}^{2+}$ -induced mPTP opening on isolated myocardial mitochondria was used. As indicated in Fig. 5, 250  $\mu\text{M}$   $\text{CaCl}_2$ , which can open the mPTP [13], induced a notable reduction at  $A_{520}$  in cardiac mitochondrial suspensions. This effect was remarkably inhibited by cyclosporin A (CsA, 10  $\mu\text{M}$ ), which can specifically inhibit mPTP opening [13] with a reduction of  $A_{520}$ . As for CsA, six hit compounds (P3, P6, P8, P10, C7 and C11) remarkably inhibited the  $\text{Ca}^{2+}$ -induced reduction of  $A_{520}$ , indicating that they refrained the  $\text{Ca}^{2+}$ -induced mPTP opening (i.e., mitochondrial protection) by directly interacting with the mitochondria.

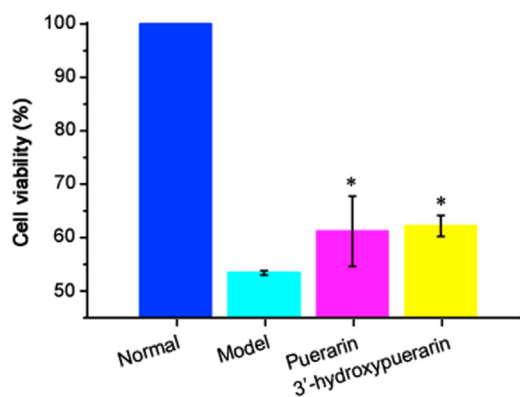
These data indicated that the tested compounds were potential mitochondria-targeting compounds potentially affecting mitochondrial functionality. In combination with the screening results provided by SM-MBC, the other 17 identified compounds were also potential mitochondria-targeting compounds, which merit further investigations.

Among these 23 hit mitochondria-targeting compounds, puerarin (P3) [13], daidzin (P6) [19,20], daidzein (P8) [21], and formononetin (P10) [25] can interact with mitochondria to exert their pharmacological action, whilst ligustilide (C7) [27] can affect mitochondrial functions, further validating the reliability of the screening results provided by SM-MBC. Nevertheless, whether the other 18 hits can also regulate mitochondrial functions remains unclear. Overall, all of the identified compounds might directly act on mitochondria to protect or damage mitochondrial functions, helping the elucidation of drug action mechanism and the identification of new drugs from TCMs.



**Fig. 6.** (A) Effects of senkyunolide A on HepG2 cell confluence (%). (B) Cisplatin was used as positive control. Data were obtained from 5 independent measurements. \* $P < 0.05$ , \*\*\* $P < 0.001$ , compared with control group.





**Fig. 7.** Effects of 3'-hydroxypuerarin on cellular viability in H/R-induced cardiomyocytes. Puerarin was used as positive control. Data were obtained from 3 independent determinations. \*  $P < 0.05$ , compared with model group.

### 3.5. Effects of identified compounds on cell proliferation

The effects of hits on cell proliferation were investigated for evaluating their potential anti-cancer efficacy. Similar to cisplatin that is known to act against cancerous proliferation [38], senkyunolide A (**C4**) significantly inhibited HepG2 cell proliferation with a dose-dependent trend ( $P < 0.05$ ; Fig. 6). Combining with the screening results, we can speculate that the inhibition of cell proliferation may be attributed to the direct interaction with mitochondria, affecting mitochondrial functionality. This point needs to be further investigated.

### 3.6. Effects of hits on cellular viability in hypoxia/reoxygenation (H/R)-induced cardiomyocytes

As expected, H/R notably decreased cell viability (~57% decrease in WST-8 reduction;  $P < 0.01$ ) in cardiomyocytes (Fig. 7). This effect was remarkably inhibited by puerarin (**P3**; 320  $\mu\text{M}$ ), which can specifically inhibit mPTP opening to exert the effective cardioprotection [13,39]. Analogously, 3'-hydroxypuerarin (**P2**; 140  $\mu\text{M}$ ) significantly prevented the loss of cardiomyocyte viability that resulted from H/R induction (Fig. 7;  $P < 0.05$ ). This effect may be caused by direct binding with mitochondria that further remedies the mitochondrial dysfunctions induced by H/R. In combination with the results of senkyunolide A (**C4**), the developed screening method could be used as an effective alternative for discovering lead compounds from TCMs extracts.

## 4. Conclusion

We applied SM-MBC for identifying mitochondria-targeting compounds from TCMs extracts, including PR and CR samples, and 23 mitochondria-targeting compounds were successfully discovered from the two extracts, 17 of which were identified by LC/MS. The direct mitochondria-bound ability of six compounds was validated by pharmacological tests *in vitro*. Moreover, the inhibition ability of senkyunolide A (**C4**) and 3'-hydroxypuerarin (**P2**) on HepG2 cell proliferation and on loss of H/R-induced cardiomyocyte viability were investigated. The results obtained will be helpful for in-depth understanding of therapeutic action of TCMs and developing novel potential mitochondrial modulators from TCMs. SM-MBC was further confirmed to be an efficient proposal for the rapid screening of mitochondria-targeting compounds from complex matrix.

## Conflicts of interest

The authors declare that there are no conflicts of interest.

## Acknowledgments

Financial support from the National Natural Science Foundation of China (Grant 81660596, 81673395 and 81373921), the Research Fund for the Doctoral Program of Higher Education of China (Grant 20130001110057) and the Application and Basis Research Project of Yunnan China (Grant 2017FF117-(013) and 2016FD050) is gratefully acknowledged.

## Appendix A. Supplementary material

Supplementary data associated with this article can be found in the online version at doi:10.1016/j.jpha.2018.06.001.

## References

- [1] A. Gvozdičková, Mitochondrial medicine: mitochondrial metabolism, diseases, diagnosis and therapy, Springer, Netherlands, Berlin, 2008.
- [2] D. Pathania, M. Millard, N. Neamati, Opportunities in discovery and delivery of anticancer drugs targeting mitochondria and cancer cell metabolism, *Adv. Drug Deliv. Rev.* 61 (2009) 1250–1275.
- [3] P.A. Andreux, R.H. Houtkooper, J. Auwerx, Pharmacological approaches to restore mitochondrial function, *Nat. Rev. Drug Discov.* 12 (2013) 465–483.
- [4] A. Heller, G. Brockhoff, A. Goepferich, Targeting drugs to mitochondria, *Eur. J. Pharm. Biopharm.* 82 (2012) 1–18.
- [5] A. Szewczyk, L. Wojtczak, Mitochondria as a pharmacological target, *Pharmacol. Rev.* 54 (2002) 101–127.
- [6] X. Yang, R. Chang, Y. Yue, et al., Cardiac muscle/cell membrane chromatography-offline-liquid chromatography/mass spectrometry method to identify bioactive components from traditional Chinese medicines, *Anal. Lett.* 46 (2013) 1317–1330.
- [7] X.X. Yang, F. Xu, D. Wang, et al., Development of a mitochondria-based centrifugal ultrafiltration/liquid chromatography/mass spectrometry method for screening mitochondria-targeted bioactive constituents from complex matrices: herbal medicines as a case study, *J. Chromatogr. A* 1413 (2015) 33–46.
- [8] J. Liu, J. Yang, Protective effect of *Pueraria lobata* extracts on mitochondria damage of liver, *Agric. Sci. Technol.* 14 (2013) 254–256. (in Chinese).
- [9] Y. Jin, Y. Hong, J. Li, et al., Advancements in the chemical constituents and pharmacological effects of Chuanxiong, *Pharm. Clin. Chin. Mater. Med.* 4 (2013) 44–48. (in Chinese).
- [10] K. Hostettmann, J.L. Wolfender, C. Terreaux, Modern screening techniques for plant extracts, *Pharm. Biol.* 39 (2001) 18–32.
- [11] S. Sahdeo, A. Tomilov, K. Komachi, et al., High-throughput screening of FDA-approved drugs using oxygen biosensor plates reveals secondary mitochondrial effects, *Mitochondrion* 17 (2014) 116–125.
- [12] E.F. Iannetti, P.H. Willems, M. Pellegrini, et al., Toward high-content screening of mitochondrial morphology and membrane potential in living cells, *Int. J. Biochem. Cell Biol.* 63 (2015) 66–70.
- [13] Q. Gao, H.Y. Pan, S. Qiu, et al., Atractyloside and 5-hydroxydecanoate block the protective effect of puerarin in isolated rat heart, *Life Sci.* 79 (2006) 217–224.
- [14] C. Zhang, G. Lin, W. Wan, et al., Resveratrol, a polyphenol phytoalexin, protects cardiomyocytes against anoxia/reoxygenation injury via the TLR4/NF- $\kappa$ B signaling pathway, *Int. J. Mol. Med.* 29 (2012) 557–563.
- [15] Z. Zhang, T.N. Lam, Z. Zuo, Radix Puerariae: an overview of its chemistry, pharmacology, pharmacokinetics, and clinical use, *J. Clin. Pharmacol.* 53 (2013) 787–811.
- [16] A.K. Maji, S. Pandit, P. Banerji, et al., *Pueraria tuberosa*: a review on its phytochemical and therapeutic potential, *Nat. Prod. Res.* 28 (2014) 2111–2127.
- [17] W. Li, Y. Tang, Y. Chen, et al., Advances in the chemical analysis and biological activities of Chuanxiong, *Molecules* 17 (2012) 10614–10651.
- [18] C.M. Li, J.H. Wu, R.F. Yang, et al., Ligusticum chuanxiong prevents ovariectomy-induced liver and vascular damage in rats, *Am. J. Chin. Med.* 41 (2013) 831–848.
- [19] G.Y. Gao, D.J. Li, W.M. Keung, Synthesis of potential antidipsotropic isoflavones: inhibitors of the mitochondrial monoamine oxidase-aldehyde dehydrogenase pathway, *J. Med. Chem.* 44 (2001) 3320–3328.
- [20] S.H. Kim, J.H. Heo, Y.S. Kim, et al., Protective effect of daidzin against D-galactosamine and lipopolysaccharide-induced hepatic failure in mice, *Phytother. Res.* 23 (2009) 701–706.

- [21] J. Zheng, V.D. Ramirez, Inhibition of mitochondrial proton F0F1-ATPase/ATP synthase by polyphenolic phytochemicals, *Br. J. Pharmacol.* 130 (2000) 1115–1123.
- [22] H.J. Park, Y.K. Jeon, D.M. You, et al., Daidzein causes cytochrome c-mediated apoptosis via the Bcl-2 family in human hepatic cancer cells, *Food Chem. Toxicol.* 60 (2013) 542–549.
- [23] C. Borrás, J. Gambini, R. López-Grueso, et al., Direct antioxidant and protective effect of estradiol on isolated mitochondria, *Biochim. Biophys. Acta* 1802 (2010) 205–211.
- [24] M.L. McDowell, A. Das, J.A. Smith, et al., Neuroprotective effects of genistein in VSC4.1 motoneurons exposed to activated microglial cytokines, *Neurochem. Int.* 59 (2011) 175–184.
- [25] J. Hwang, S. Lee, S. Hong, et al., Monoamine oxidase inhibitory components from the roots of *Sophora flavescens*, *Arch. Pharm. Res.* 28 (2005) 190–194.
- [26] S. Zhang, X. Tang, J. Tian, et al., Cardioprotective effect of sulphonated formononetin on acute myocardial infarction in rats, *Basic Clin. Pharmacol. Toxicol.* 108 (2011) 390–395.
- [27] Y. Yu, J.R. Du, C.Y. Wang, et al., Protection against hydrogen peroxide-induced injury by Z-ligustilide in PC12 cells, *Exp. Brain Res.* 184 (2008) 307–312.
- [28] G. Du, H. Zhao, Q. Zhang, et al., A rapid method for simultaneous determination of 14 phenolic compounds in *Radix Puerariae* using microwave-assisted extraction and ultra high performance liquid chromatography coupled with diode array detection and time-of-flight mass spectrometry, *J. Chromatogr. A* 1217 (2010) 705–714.
- [29] Y. Zhang, S. Shi, X. Xiong, et al., Comparative evaluation of three methods based on high-performance liquid chromatography analysis combined with a 2,2'-diphenyl-1-picrylhydrazyl assay for the rapid screening of antioxidants from *Pueraria lobata* flowers, *Anal. Bioanal. Chem.* 402 (2012) 2965–2976.
- [30] C.L. Zhang, X.P. Ding, Z.F. Hu, et al., Comparative study of *Puerariae lobatae* and *Puerariae thomsonii* by HPLC-diode array detection-flow injection-chemiluminescence coupled with HPLC-electrospray ionization-MS, *Chem. Pharm. Bull.* 59 (2011) 541–545.
- [31] J.K. Prasain, A. Reppert, K. Jones, et al., Identification of isoflavone glycosides in *Pueraria lobata* cultures by tandem mass spectrometry, *Phytochem. Anal.* 18 (2007) 50–59.
- [32] J. Lu, Y. Xie, Y. Tan, et al., Simultaneous determination of isoflavones, saponins and flavones in *Flos Puerariae* by ultra performance liquid chromatography coupled with quadrupole time-of-flight mass spectrometry, *Chem. Pharm. Bull.* 61 (2013) 941–951.
- [33] X. Zhang, L. Liu, L. Zhu, et al., A high performance liquid chromatography fingerprinting and ultra high performance liquid chromatography coupled with quadrupole time-of-flight mass spectrometry chemical profiling approach to rapidly find characteristic chemical markers for quality evaluation of dispensing granules, a case study on *Chuanxiong Rhizoma*, *J. Pharm. Biomed. Anal.* 88 (2014) 391–400.
- [34] X. Zhang, H. Xiao, Q. Xu, et al., Characterization of phthalides in *Ligusticum chuanxiong* by liquid chromatographic-atmospheric pressure chemical ionization-mass spectrometry, *J. Chromatogr. Sci.* 41 (2003) 428–433.
- [35] A. Zuo, L. Wang, H. Xiao, et al., Identification of the absorbed components and metabolites in rat plasma after oral administration of *Rhizoma Chuanxiong* decoction by HPLC-ESI-MS/MS, *J. Pharm. Biomed. Anal.* 56 (2011) 1046–1056.
- [36] S. Li, S. Chan, G. Lin, et al., Simultaneous analysis of seventeen chemical ingredients of *Ligusticum chuanxiong* by on-line high performance liquid chromatography-diode array detector-mass spectrometry, *Planta Med.* 69 (2003) 445–451.
- [37] T. Yi, K.S.Y. Leung, G.H. Lu, et al., Simultaneous qualitative and quantitative analyses of the major constituents in the rhizome of *Ligusticum Chuanxiong* using HPLC-DAD-MS, *Chem. Pharm. Bull.* 54 (2006) 255–259.
- [38] K. Qu, T. Lin, Z. Wang, et al., Reactive oxygen species generation is essential for cisplatin-induced accelerated senescence in hepatocellular carcinoma, *Front. Med.* 8 (2014) 227–235.
- [39] L. Tang, D. Liu, X. Yi, et al., The protective effects of puerarin in cardiomyocytes from anoxia/reoxygenation injury are mediated by PKC $\epsilon$ , *Cell Biochem. Funct.* 32 (2014) 378–386.