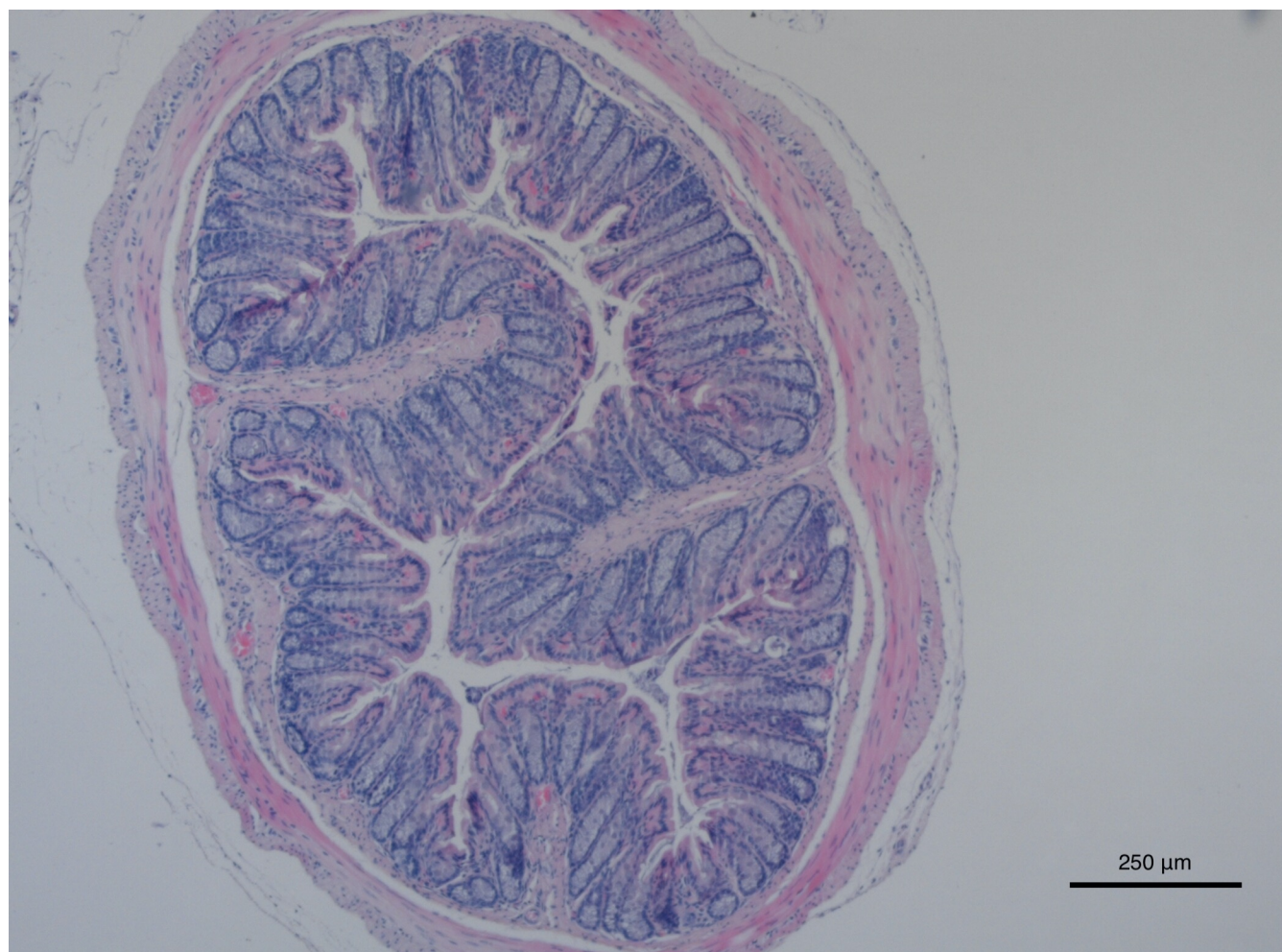


Particular genomic and virulence traits associated with preterm infant-derived toxigenic *Clostridium perfringens* strains

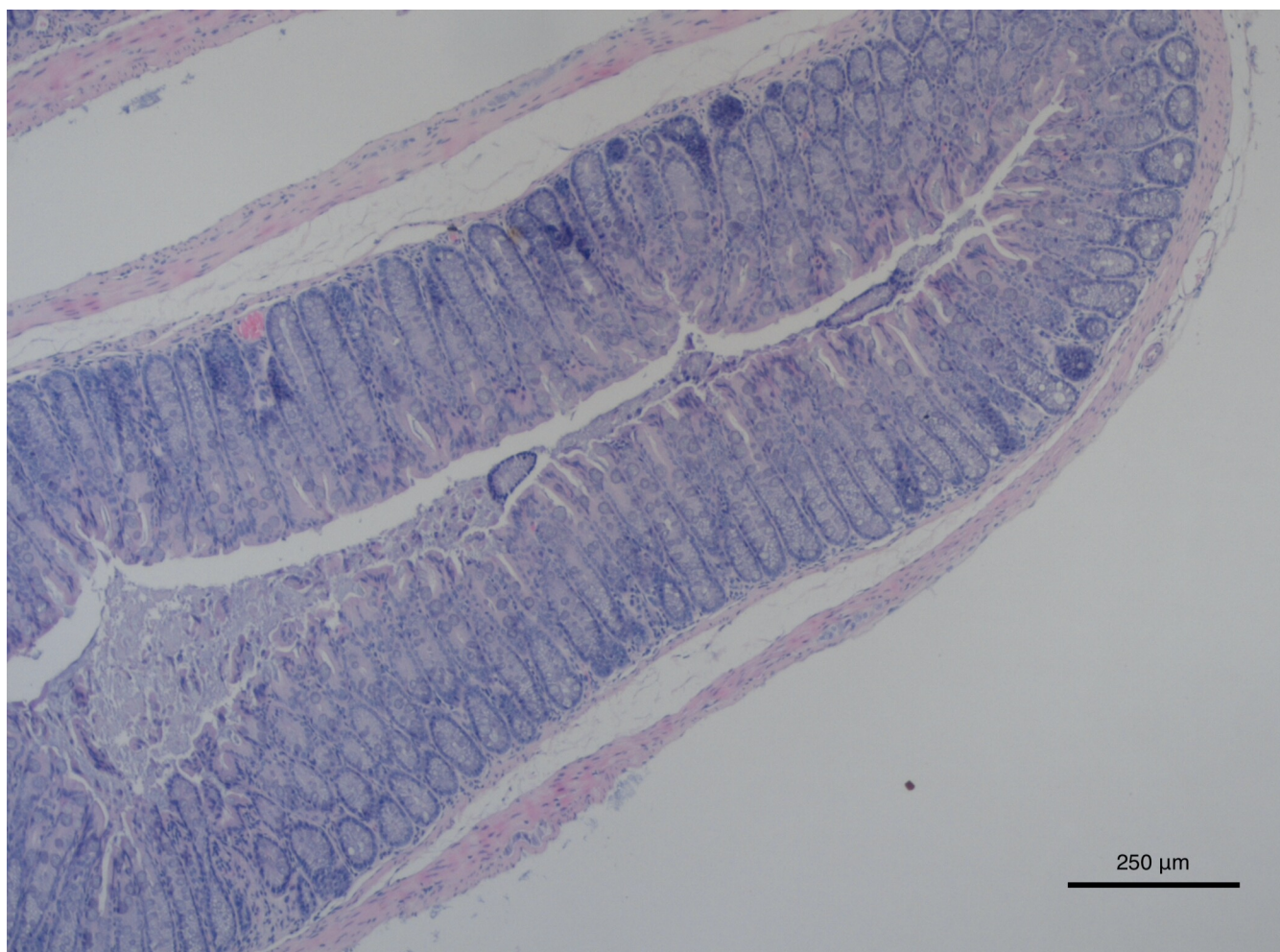
In the format provided by the
authors and unedited



Supplementary Fig. 1. Representative H&E-stained murine distal colonic section of Control group.



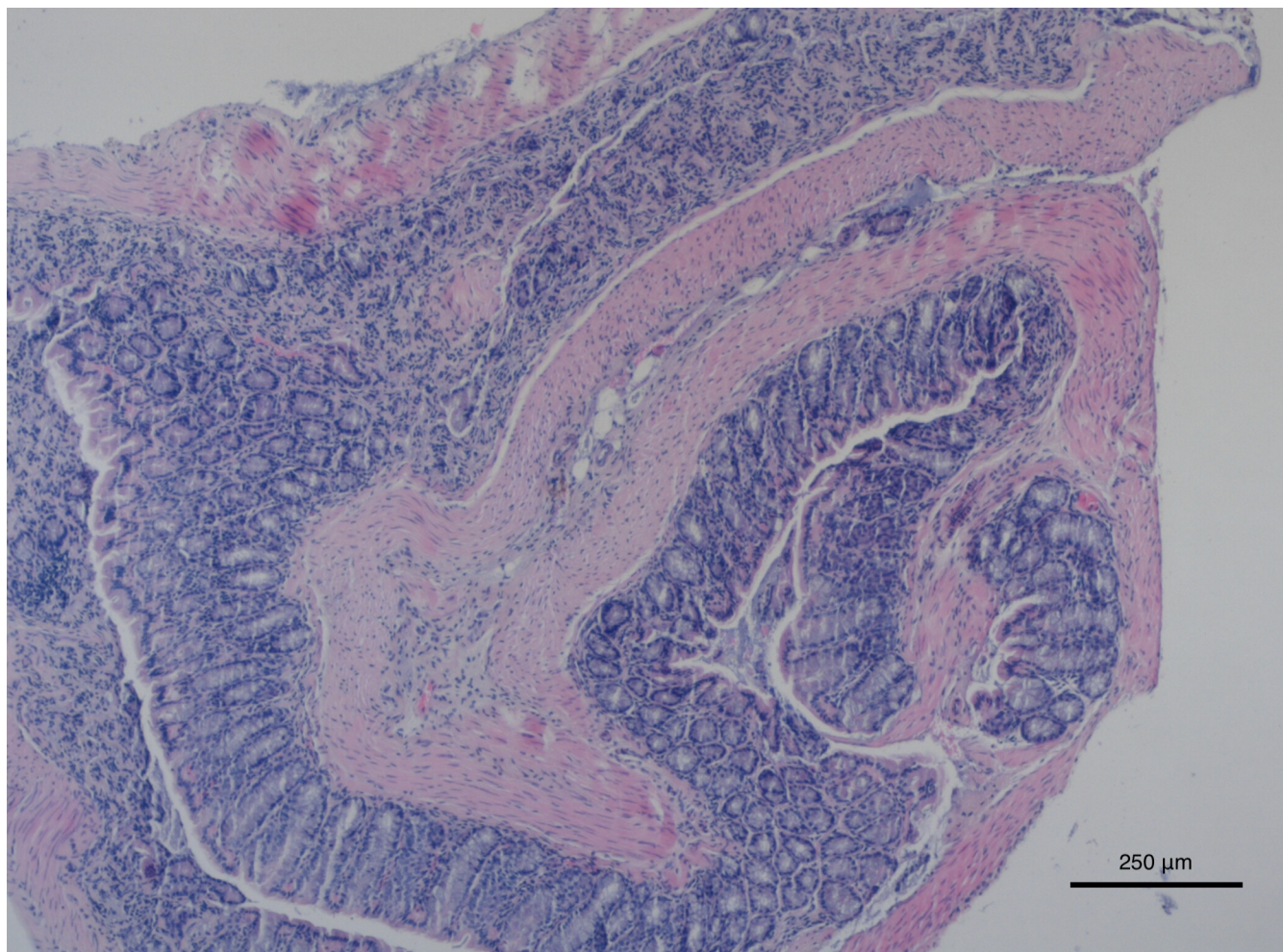
Supplementary Fig. 2. Representative H&E-stained murine distal colonic section of ABX group.



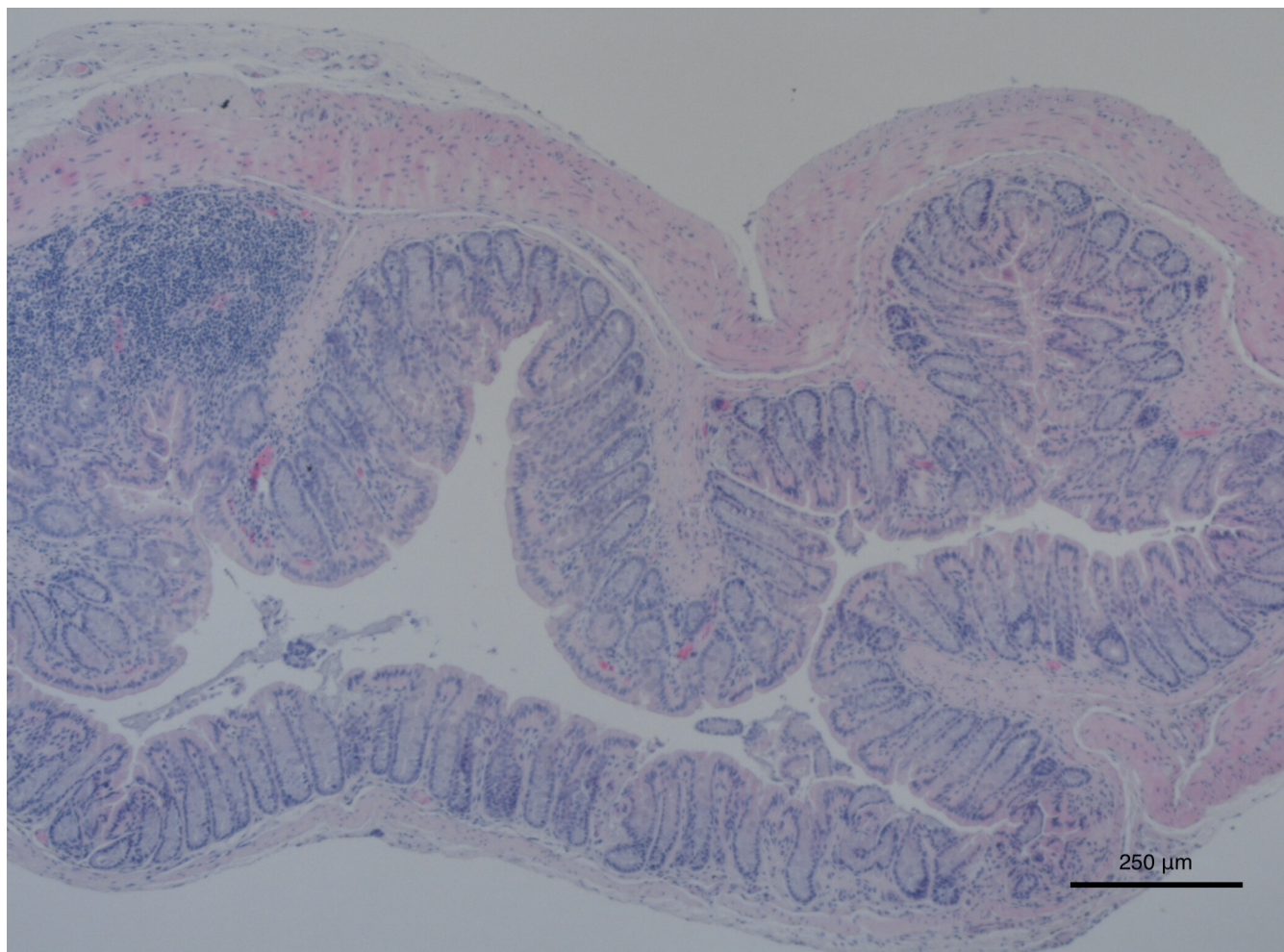
Supplementary Fig. 3. Representative H&E-stained murine distal colonic section of *pfoA*⁺ strain IQ146.



Supplementary Fig. 4. Representative H&E-stained murine distal colonic section of *pfoA*⁺ strain IQ129.



Supplementary Fig. 5. Representative H&E-stained murine distal colonic section of *pfoA*⁺ strain LH115.



Supplementary Fig. 6. Representative H&E-stained murine distal colonic section of *pfoA*- strain LH043.



Supplementary Fig. 7. Representative H&E-stained murine distal colonic section of *pfoA*- strain IQ147.



Supplementary Fig. 8. Representative H&E-stained murine distal colonic section of *pfoA*- strain IQ133.