



## REVIEW

# Cystine transporter SLC7A11/xCT in cancer: ferroptosis, nutrient dependency, and cancer therapy

Pranavi Koppula<sup>1,2</sup>, Li Zhuang<sup>1</sup>, Boyi Gan<sup>1,2</sup>✉

<sup>1</sup> Department of Experimental Radiation Oncology, The University of Texas MD Anderson Cancer Center, Houston, TX, USA

<sup>2</sup> The University of Texas MD Anderson UTHealth Graduate School of Biomedical Sciences, Houston, TX, USA

✉ Correspondence: bgan@mdanderson.org (B. Gan)

Received July 28, 2020 Accepted August 28, 2020

## ABSTRACT

The cystine/glutamate antiporter SLC7A11 (also commonly known as xCT) functions to import cystine for glutathione biosynthesis and antioxidant defense and is overexpressed in multiple human cancers. Recent studies revealed that SLC7A11 overexpression promotes tumor growth partly through suppressing ferroptosis, a form of regulated cell death induced by excessive lipid peroxidation. However, cancer cells with high expression of SLC7A11 (SLC7A11<sup>high</sup>) also have to endure the significant cost associated with SLC7A11-mediated metabolic reprogramming, leading to glucose- and glutamine-dependency in SLC7A11<sup>high</sup> cancer cells, which presents potential metabolic vulnerabilities for therapeutic targeting in SLC7A11<sup>high</sup> cancer. In this review, we summarize diverse regulatory mechanisms of SLC7A11 in cancer, discuss ferroptosis-dependent and -independent functions of SLC7A11 in promoting tumor development, explore the mechanistic basis of SLC7A11-induced nutrient dependency in cancer cells, and conceptualize therapeutic strategies to target SLC7A11 in cancer treatment. This review will provide the foundation for further understanding SLC7A11 in ferroptosis, nutrient dependency, and tumor biology and for developing novel effective cancer therapies.

**KEYWORDS** SLC7A11, xCT, cystine, cysteine, ferroptosis, nutrient dependency, cancer therapy

## INTRODUCTION

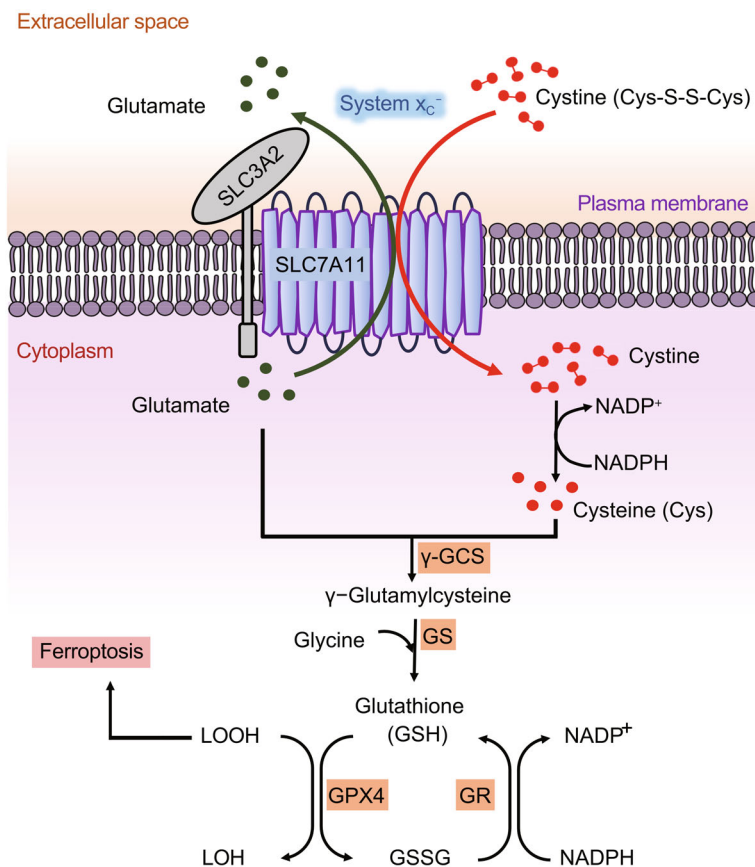
Cysteine is a proteinogenic amino acid that has a versatile role in protein synthesis, posttranslational modification, and

redox maintenance (Stipanuk et al., 2006; Combs and DeNicola, 2019). Cysteine serves as the rate-limiting precursor for glutathione, a tripeptide comprised of three amino acids—cysteine, glutamate, and glycine—and the most abundant cellular antioxidant. Cysteine can also act as an antioxidant itself as well as the precursor for other biomolecules with antioxidant properties, such as taurine and hydrogen sulfide (Stipanuk et al., 2006; Combs and DeNicola, 2019). Intracellular cysteine can be synthesized through *de novo* biosynthesis (via the transsulfuration pathway) or recycled through protein degradation. However, because cancer cells often experience high levels of oxidative stress (Trachootham et al., 2009; Chio and Tuveson, 2017), cysteine supply via *de novo* biosynthesis or protein catabolism generally cannot meet the high demand for antioxidant defense in cancer cells; therefore, most cancer cells mainly rely on obtaining cysteine from the extracellular environment through nutrient transporters. The intra- and extra-cellular redox environments are very different: while cells generally maintain a reducing environment in the cytosol, the extracellular environment is highly oxidizing. Consequently, extracellular cysteine is highly unstable with only around 30-minute half-life in culture media (Ishii and Bannai, 1985), and is quickly oxidized to cystine (the oxidized dimer form of cysteine). The concentration of extracellular cystine is higher than that of extracellular cysteine by an order of magnitude. Some cancer cells can still effectively take up extracellular cysteine through cysteine transporters under certain conditions; for example, due to the high availability of extracellular cysteine secreted from surrounding bone marrow stromal cells, chronic lymphocytic leukemia cells can actively import cysteine from the extracellular environment (Zhang et al., 2012). However, most cancer cells largely depend on the cystine transporter system x<sub>c</sub><sup>-</sup> to

import cystine, which is then converted to cysteine in the cytosol through an NADPH-consuming reduction reaction; cysteine is subsequently used to synthesize glutathione (as well as other biomolecules) (Fig. 1) (Stipanuk et al., 2006; Combs and DeNicola, 2019).

The system  $x_c^-$  is a sodium-independent antiporter that exports intracellular glutamate and import extracellular cystine at a 1:1 ratio (Fig. 1) (Bannai, 1986; Conrad and Sato, 2012). It consists of two subunits linked via a disulfide bond, including the heavy chain subunit solute carrier family 3 member 2 (SLC3A2; also called CD98 or 4F2hc) and the light chain subunit solute carrier family 7 member 11

(SLC7A11; also commonly known as xCT). SLC7A11, a multi-pass transmembrane protein, mediates the cystine/glutamate antiporter activity in the system  $x_c^-$  (Sato et al., 1999; Koppula et al., 2018), whereas SLC3A2, a single transmembrane protein, is a chaperone to maintain SLC7A11 protein stability and appropriate membrane localization (Fig. 1) (Nakamura et al., 1999). Since SLC3A2 also serves as the chaperone for several other amino acid transporters, its function is not limited to cystine transport (Kandasamy et al., 2018). We will focus on SLC7A11 and refer to this cystine transporter as SLC7A11 throughout this review.



**Figure 1. Structure and function of SLC7A11.** System  $x_c^-$  functions as a cystine/glutamate antiporter that imports one molecule of cystine in exchange for one molecule of intracellular glutamate. System  $x_c^-$  is a heterodimer consisting of the light chain subunit SLC7A11 and the heavy chain subunit SLC3A2. SLC7A11 mediates the antiporter activity of system  $x_c^-$ , whereas SLC3A2 anchors SLC7A11 to the plasma membrane and maintains SLC7A11 protein stability. Extracellular cystine is imported into the cell through SLC7A11, and then is converted to cysteine through a NADPH-consuming reduction reaction. Subsequently, cysteine is utilized to synthesize GSH through a two-step process. Cysteine forms  $\gamma$ -glutamylcysteine in conjugation with glutamate in the first step catalyzed by  $\gamma$ -GCS. The second step involves GS-mediated enzymatic addition of a glycine molecule to produce GSH. Ferroptosis is induced by excessive accumulation of lipid hydroperoxides in cellular membrane. GPX4 uses GSH to reduce lipid hydroperoxides to lipid alcohols, thereby suppressing ferroptosis, through which GSH is oxidized to GSSG; GSSG is then converted back to GSH via GR-mediated reduction reaction, which consumes NADPH.  $\gamma$ -GCS:  $\gamma$ -glutamylcysteine synthetase, GS: glutathione synthetase, GPX4: glutathione peroxidase 4, GR: glutathione reductase, GSH: reduced glutathione, GSSG: oxidized glutathione, LOOH: lipid hydroperoxide, LOH: lipid alcohol.

The role of cystine uptake in maintaining cell survival was implicated many years ago by the observation that cystine deprivation in cell culture media can lead to significant cell death in many cancer cell lines (Eagle, 1955a, b); however, the nature of this cell death had remained unclear. It was later shown that cystine starvation results in glutathione depletion in cells and that cystine starvation-induced cell death can be rescued by antioxidant vitamin E, therefore indicating the involvement of an oxidative stress-induced cell death in this context (Bannai et al., 1977). In 2012, it was discovered that pharmacologic blockade of SLC7A11-mediated cystine uptake by compounds such as erastin induces a new form of cell death termed ferroptosis (Dixon et al., 2012). Ferroptosis is an iron-dependent form of regulated cell death induced by lethal accumulation of lipid peroxides in the cellular membrane, and is mechanistically and morphologically distinct from other forms of regulated cell death such as apoptosis and necroptosis (Stockwell et al., 2017; Stockwell and Jiang, 2020). Cells have evolved various defense mechanisms to detoxify these toxic lipid peroxides, prominent among which is glutathione peroxidase 4 (GPX4), a GPX family member that uses reduced glutathione (GSH) as a co-factor to detoxify lipid peroxides to lipid alcohols, thereby suppressing ferroptosis (Fig. 1) (Friedmann Angeli et al., 2014; Yang et al., 2014). As noted above, cysteine is the rate-limiting precursor for GSH synthesis, and intracellular cysteine is mainly supplied by SLC7A11-mediated cystine uptake. Consistent with this, it was shown that removing cystine from cell culture media or SLC7A11 inactivation by genetic ablation or pharmacologic inhibition induces potent ferroptosis in many cancer cells; conversely, SLC7A11 overexpression in cancer cells promotes GSH biosynthesis and ferroptosis resistance (Dixon et al., 2012; Jiang et al., 2015; Zhang et al., 2018b). These studies together establish a critical role of SLC7A11-mediated cystine uptake in suppressing ferroptosis and maintaining cell survival under oxidative stress conditions.

In recent years, ferroptosis as a new cell death mechanism has sparked great interest in the scientific community. Accumulating evidence suggests that ferroptosis, similar to apoptosis, is a key tumor suppression mechanism (Jiang et al., 2015; Jennis et al., 2016; Stockwell et al., 2017; Zhang et al., 2018b; Chu et al., 2019; Liu et al., 2019). Importantly, recent studies also revealed that common cancer therapies, such as immunotherapy and radiotherapy, can induce ferroptosis partly through modulating SLC7A11 expression (Lang et al., 2019; Wang et al., 2019a; Lei et al., 2020; Ye et al., 2020). Correspondingly, considerable interest has been directed toward understanding the role and regulatory mechanisms of SLC7A11 in ferroptosis and tumor biology as well as therapeutically targeting SLC7A11 in cancer therapy. Another fascinating topic in SLC7A11 research in recent years has been to uncover the role of SLC7A11 in inducing nutrient dependency in cancer cells (Goji et al., 2017; Koppula et al., 2017; Muir et al., 2017; Romero et al., 2017; Sayin et al., 2017; Shin et al., 2017; Koppula et al., 2018;

Joly et al., 2020; Liu et al., 2020). (Here nutrient dependency refers to the phenomenon wherein metabolic reprogramming renders cancer cells to be highly dependent on certain nutrients for survival and growth, such that removal of such nutrients will selectively kill or halt the growth of cancer cells that are dependent on these nutrients while having less harmful effects on other cancer cells or normal cells.) In this review, we will summarize how diverse regulation of SLC7A11 expression and its transporter activity governs ferroptosis. We will then discuss how SLC7A11 promotes tumor development through its function in inhibiting ferroptosis as well as other ferroptosis-independent functions. We will also explore the metabolic underpinnings of SLC7A11-induced nutrient dependency in cancer cells. Finally, we will discuss how our understanding of SLC7A11 function in ferroptosis and nutrient dependency informs strategies to target SLC7A11 in cancer and highlight important unknown questions for future investigation.

## REGULATORY MECHANISMS OF SLC7A11

To ensure appropriate functioning of SLC7A11 in maintaining redox homeostasis, the expression and activity of SLC7A11 are subjected to tight regulation through a variety of mechanisms, including transcriptional regulation by transcription factors and epigenetic regulators, and post-transcriptional regulatory mechanisms to control its mRNA levels, protein stability, subcellular localization, and transporter activity. An emerging theme from recent studies is that various SLC7A11 regulators govern ferroptosis sensitivity through modulating SLC7A11 expression or activity. In this section, we will discuss how different regulatory mechanisms modulate SLC7A11 expression or activity and downstream biological effects mediated by SLC7A11, with a focus on ferroptosis. As further discussed in later sections, some of these SLC7A11 regulators also play important roles in cancer biology, and their dysregulation in cancer can lead to ferroptosis resistance and tumor formation.

### Transcriptional regulation of SLC7A11 by transcriptional factors

It is well established that SLC7A11 expression can be induced under various stress conditions, including oxidative stress, amino acid starvation, metabolic stress, and genotoxic stress, likely as an adaptive response to enable cells to restore redox homeostasis and maintain survival under stress conditions (Koppula et al., 2018). Activating transcription factor 4 (ATF4) and/or nuclear factor erythroid 2-related factor 2 (NRF2) represent two major transcription factors that mediate stress-induced *SLC7A11* transcription. ATF4, a member of the ATF/CREB family of transcription factors, is induced, primarily by mRNA translation, under various stress conditions such as amino acid starvation, endoplasmic reticulum stress, hypoxia, and viral infection; ATF4 then translocates into the nucleus and regulates the

transcription of genes that cope with these stress conditions (Pakos-Zebrucka et al., 2016). For example, amino acid deprivation increases *ATF4* mRNA translation through the general control non-derepressible-2 (GCN2)-eukaryotic initiation factor 2 $\alpha$  (eIF2 $\alpha$ ) signaling axis. Consequently, ATF4 binds on the amino acid response elements (AAREs) in gene promoters and promotes the transcription of genes involved in amino acid metabolism and stress response, including *SLC7A11* (Fig. 2), thereby enabling cells to cope with amino acid-limiting conditions (Kilberg et al., 2009). Indeed, *SLC7A11* expression can be potently induced upon deprivation of various amino acids, including cystine, and amino acid deprivation-induced *SLC7A11* expression is largely mediated by ATF4 (Sato et al., 2004). Since cystine starvation induces ferroptosis, whereas *SLC7A11* protects cells from ferroptosis (Stockwell and Jiang, 2020), cystine starvation-induced *SLC7A11* expression ostensibly acts as an adaptive response to help cells survive under cystine-limiting conditions. In support of this, it was shown that ATF4 promotes ferroptosis resistance by upregulating *SLC7A11* (Chen et al., 2017).

Another transcription factor that promotes *SLC7A11* transcription is NRF2, which primarily mediates transcriptional programs in response to oxidative stress (Rojo de la Vega et al., 2018). NRF2 protein is unstable under basal conditions, being ubiquitinated by an E3 ubiquitin ligase kelch-like ECH-associated protein-1 (KEAP1) and subsequently undergoing rapid degradation through the proteasome pathway. Oxidative stress impairs NRF2 degradation by KEAP1 and stabilizes NRF2 protein, which then binds on the antioxidant response elements (AREs) in gene promoters and governs the transcription of genes involved in antioxidant defense and redox maintenance, including *SLC7A11* (Fig. 2). KEAP1 inactivation leads to NRF2 stabilization under basal conditions, resulting in upregulation of NRF2 target genes (Rojo de la Vega et al., 2018). Recent studies using clustered regularly interspaced short palindromic repeats (CRISPR) screens uncovered KEAP1 as a key regulator of ferroptosis, and it was shown that *KEAP1* deficiency promotes ferroptosis resistance (Cao et al., 2019). Considering the critical role of *SLC7A11* in inhibiting ferroptosis, it is likely that the ferroptosis resistance caused by *KEAP1* deficiency is at least partly mediated by *SLC7A11*. It should be noted that NRF2 regulates other genes involved in GSH biosynthesis, iron metabolism, and antioxidant responses, which might also play a role in mediating ferroptosis resistance in *KEAP1* deficient cells. An extensive discussion of this topic will be beyond the scope of this review, and we refer readers to an excellent recent review focusing on NRF2 signaling in ferroptosis (Anandhan et al., 2020).

ATF4 and NRF2 often act concertedly to regulate stress-induced gene expression. For example, ATF4 and NRF2 interact with each other on the *SLC7A11* promoter, and cooperatively regulate *SLC7A11* transcription under stress conditions (Ye et al., 2014). It is important to note that the

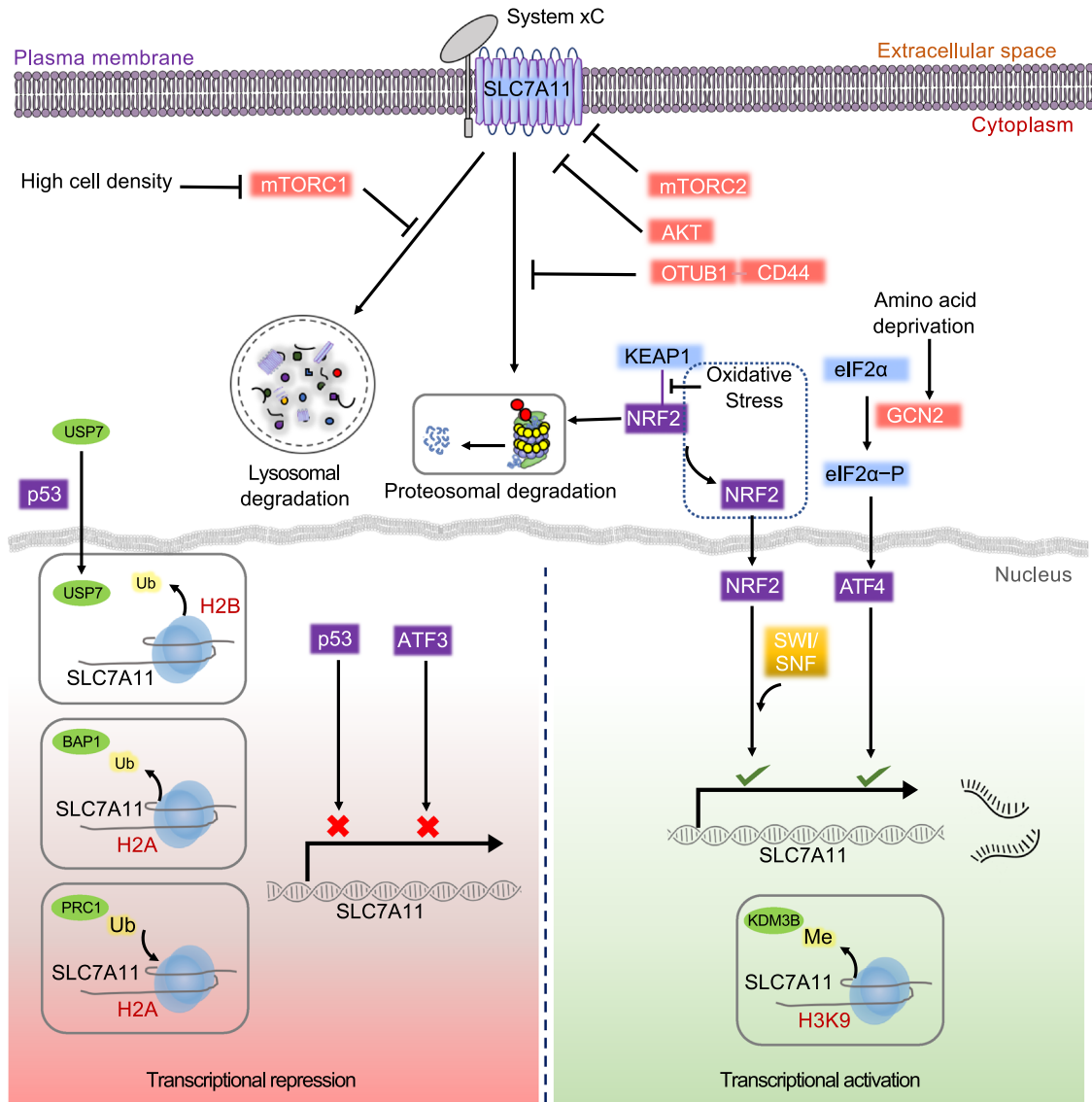
definitive evidence for the requirement of ATF4 or NRF2 to mediate various stress-induced *SLC7A11* expression is often lacking (i.e., to show that *ATF4* or *NRF2* deletion would abolish *SLC7A11* induction under a given stress condition). A recent study showed that *ATF4* or *NRF2* deficiency abolished glucose starvation-induced *SLC7A11* expression; surprisingly, erastin-induced *SLC7A11* remains intact in *ATF4* or *NRF2* knockout (KO) cells (Zhang et al., 2019a), suggesting that while glucose starvation-induced *SLC7A11* expression depends on ATF4 and NRF2, erastin-induced *SLC7A11* expression likely operates through ATF4- or NRF2-independent mechanisms.

*SLC7A11* expression can also be repressed by transcriptional regulation. p53 is a transcription factor that plays a key role in tumor suppression (Vousden and Prives, 2009). *SLC7A11* was identified as a p53 transcriptional target that is repressed by p53 (Fig. 2) (Jiang et al., 2015). It was further shown that p53 promotes ferroptosis under various ferroptosis-inducing conditions partly by repressing *SLC7A11* expression, whereas *SLC7A11* upregulation by p53 deficiency promotes ferroptosis resistance (Jiang et al., 2015). As further elaborated in the following section, p53 regulation of ferroptosis via suppressing *SLC7A11* expression plays a key role in tumor suppression.

ATF3, another member of the ATF/CREB family of transcription factors, was previously identified to be upregulated upon erastin treatment (Dixon et al., 2014). A subsequent study confirmed erastin-induced ATF3 expression and further showed that ATF3 can bind on the *SLC7A11* promoter and repress its expression independent of p53 (Fig. 2), and ATF3 promotes erastin-induced ferroptosis via downregulating *SLC7A11* levels (Wang et al., 2020a). Since erastin treatment (or cystine starvation) potently induces *SLC7A11* expression (Zhang et al., 2018b) yet ATF3 suppresses *SLC7A11* expression (Wang et al., 2020a), it seems unlikely that erastin-induced ATF3 would contribute to erastin-induced *SLC7A11* expression; it was further demonstrated that erastin-induced ATF3 does not appear to regulate *SLC7A11* levels induced by erastin treatment (Wang et al., 2020a). These data suggest that ATF3 primarily regulates *SLC7A11* transcription at basal conditions and does not affect stress-induced *SLC7A11* expression even though ATF3 is often induced upon stress. In brief summary, various stress conditions promote *SLC7A11* transcription partly through ATF4 and/or NRF2, whereas p53 and ATF3 mainly repress *SLC7A11* expression under basal conditions (Fig. 2). Consequently, regulation of *SLC7A11* expression by these transcription factors leads to altered cellular sensitivity to ferroptosis.

### Epigenetic regulation of *SLC7A11* transcription

Epigenetic regulation of gene transcription is primarily achieved by chemical modifications on DNA (such as DNA methylation) and/or DNA-associated histones (such as histone acetylation, methylation, ubiquitination, and



Protein & Cell

◀ **Figure 2. SLC7A11 regulation by transcriptional, epigenetic, and post-translational mechanisms.** SLC7A11 expression and function can be regulated at multiple levels under basal and stress conditions. *Transcriptional activation:* ATF4 activates SLC7A11 transcription in response to amino acid deprivation through the GCN2-eIF2 $\alpha$  signaling axis. The KEAP1-NRF2 signaling axis regulates oxidative stress-induced SLC7A11 transcription. In response to oxidative stress, KEAP1-mediated NRF2 proteasomal degradation is suppressed, allowing stabilized NRF2 protein to translocate into the nucleus and activate the transcription of SLC7A11 and other genes involved in antioxidant response. SWI/SNF chromatin remodeling complexes facilitate NRF2-mediated transcriptional activation of SLC7A11. H3K9 demethylase KDM3B decreases H3K9 methylation on the SLC7A11 promoter and promotes SLC7A11 transcription. *Transcriptional repression:* Under basal conditions, p53 and ATF3 repress SLC7A11 transcription. BAP1 deubiquitinates H2Aub on the SLC7A11 promoter and subsequently represses SLC7A11, whereas H2A ubiquitination by PRC1 on the SLC7A11 promoter also represses SLC7A11. p53-mediated nuclear translocation of USP7 results in decreased H2Bub occupancy on the SLC7A11 promoter via deubiquitination, resulting in transcriptional repression. *Post-translational regulation:* OTUB1 and CD44 form a trimeric complex with SLC7A11 to deubiquitinate SLC7A11 and inhibit SLC7A11 degradation in proteasome, thereby stabilizing SLC7A11 protein, whereas mTORC1 promotes SLC7A11 protein stability by inhibiting its lysosomal degradation. High cell density inhibits mTORC1 and promotes SLC7A11 degradation in lysosomes. Both mTORC2 and AKT inhibit SLC7A11 transporter activity by phosphorylating SLC7A11 at serine 26. ATF4: activating transcription factor 4, GCN2: general control non-derepressible-2, eif2 $\alpha$ : eukaryotic initiation factor 2 $\alpha$ , KEAP1: Kelch-like ECH associated protein-1, NRF2: nuclear factor erythroid 2-related factor 2, p53: tumor protein p53, ATF3: activating transcription factor 3, BAP1: BRCA1 associated protein-1, PRC1: polycomb repressive complex 1, USP7: ubiquitin-specific-processing protease 7, SWI/SNF: SWI/SNF/sucrose non-fermentable modeling complex, OTUB1: OTU deubiquitinase, ubiquitin aldehyde binding 1, mTORC1: mechanistic target of rapamycin complex 1, mTORC2: mechanistic target of rapamycin complex 2.

phosphorylation) (Jaenisch and Bird, 2003). These modifications are added, removed, and recognized by various epigenetic regulators collectively called writers, erasers, and readers, respectively, resulting in transcriptional activation or repression (Badeaux and Shi, 2013). Specific DNA or histone modifications are often associated with specific types of gene transcription. For example, mono- and tri-methylation at lysine 4 of histone H3 (H3K4me1 and H3K4me3) are associated with transcriptional activation, whereas trimethylation at lysine 9 and lysine 27 of histone H3 (H3K9me3 and H3K27me3) correlate with transcriptional repression. Epigenetic regulation of gene transcription is critical for controlling cellular homeostasis and development, and its dysregulation results in diseases such as cancer.

Recent studies have revealed a critical role of epigenetic regulation of SLC7A11 transcription in governing ferroptosis.

BAP1 is a nuclear deubiquitinase (DUB) that removes histone 2A mono-ubiquitination (H2Aub) at lysine 119, a histone modification that is generally associated with transcriptional repression (Wang et al., 2004; Scheuermann et al., 2010). BAP1 and its interacting proteins form the polycomb repressive deubiquitinase (PR-DUB) complex (Carbone et al., 2013). In a recent study, genome-wide analyses identified SLC7A11 as a key transcriptional target of BAP1 (Zhang et al., 2018b). Mechanistically, the PR-DUB complex binds on the SLC7A11 promoter, allowing BAP1 to deubiquitinate H2Aub on the SLC7A11 promoter and subsequently repress SLC7A11 expression independent of p53 (Fig. 2), resulting in decreased cystine uptake and increased ferroptosis sensitivity; conversely, BAP1 deficiency in cancer cells leads to SLC7A11 upregulation and ferroptosis resistance (Zhang et al., 2018b; Zhang et al., 2019c).

Based on the current model that H2Aub is associated with gene repression (Scheuermann et al., 2010), it would be expected that BAP1, by removing H2Aub, should mainly activate gene transcription. Therefore, the finding that BAP1 represses SLC7A11 expression seems counterintuitive. However, genome-wide analyses showed that BAP1-mediated deubiquitination of H2Aub is associated with both transcriptional activation and repression of target genes (Zhang et al., 2018b; Artegiani et al., 2019). These data raised the question of how BAP1-mediated deubiquitination of H2Aub regulates transcriptional repression. Polycomb repressive complex 1 (PRC1) is a major ubiquitin ligase to mediate H2Aub (Wang et al., 2004). It was shown that, while PRC1 and BAP1 (the writer and eraser of H2Aub, respectively) exert opposing effects on H2Aub levels on the SLC7A11 promoter (i.e., PRC1 inactivation decreases whereas BAP1 inactivation increases H2Aub levels on the SLC7A11 promoter), both PRC1 and BAP1 repress SLC7A11 expression (Fig. 2) (Zhang et al., 2019a). These data are in line with previous observations showing that inactivation of *Drosophila* PRC1 or BAP1 leads to upregulation of HOX genes (Scheuermann et al., 2010), and suggest a model that a dynamic balance between H2A ubiquitination and deubiquitination by PRC1 and BAP1, rather than H2Aub *per se*, might be important for repressing the expression of certain target genes such as SLC7A11 and HOX genes.

While H2Aub is associated with transcriptional repression, mono-ubiquitination of histone 2B (H2Bub) at lysine 120 generally correlates with transcriptional activation (Henry et al., 2003). A recent study linked H2Bub-mediated epigenetic mechanisms to transcriptional activation of SLC7A11 and ferroptosis suppression (Wang et al., 2019b). It was shown that erastin treatment decreases global H2Bub levels as well as H2Bub occupancy on the SLC7A11 promoter, resulting in SLC7A11 transcriptional repression (Fig. 2) (Wang et al., 2019b). [As noted above, erastin treatment generally increases SLC7A11 expression. These

data suggest that erastin treatment can induce two opposing effects on *SLC7A11* transcription: transcriptional activation (through a still unknown mechanism) and transcriptional repression (through decreasing H2Bub occupancy on the *SLC7A11* promoter (Wang et al., 2019b) and potentially activating ATF3 (Wang et al., 2020a)]. It seems that erastin-induced *SLC7A11* transcriptional activation overrides its transcriptional repression, resulting in increased *SLC7A11* expression as a net effect.] It was further demonstrated that a reduction of H2Bub levels upon erastin treatment promotes ferroptosis sensitivity, possibly through repressing *SLC7A11* expression. Mechanistically, it was proposed that p53 promotes the nuclear translocation of USP7, a DUB to remove ubiquitin from H2Bub, resulting in decreased H2Bub occupancy on the *SLC7A11* promoter and subsequent *SLC7A11* transcriptional repression (Fig. 2) (Wang et al., 2019b).

H3K9 methylation has been shown to correlate with transcriptional repression (Stewart et al., 2005). It was recently reported that overexpression of KDM3B, a H3K9 demethylase, decreases H3K9 methylation and upregulates *SLC7A11* expression (Fig. 2), presumably by removing this repressive histone mark on the *SLC7A11* promoter, resulting in enhanced resistance to erastin-induced ferroptosis (Wang et al., 2020b). As another example, BRD4, a member of the bromodomain and extraterminal domain (BET) family of proteins, is an important reader protein capable of recognizing acetylated histones and recruiting transcription factors to regulate gene transcription. Pharmacological inhibition of BRD4 by its inhibitors such as JQ1 represents a promising therapeutic strategy in cancer treatment (Shi and Vakoc, 2014). A recent study showed that JQ1 can induce ferroptosis both in vitro and in xenograft tumors; furthermore, JQ1 treatment or *BRD4* knockdown results in downregulation of *SLC7A11* as well as other ferroptosis regulators (Sui et al., 2019), suggesting that BRD4 might activate *SLC7A11* transcription via epigenetic mechanisms, whereas JQ1-mediated BRD4 inhibition represses *SLC7A11* expression and promotes ferroptosis.

Another critical epigenetic mechanism to control gene transcription involves chromatin remodeling mediated by SWI/SNF complexes, which govern histone insertion, ejection, and nucleosome sliding and therefore control gene transcription (Kadoch and Crabtree, 2015). SWI/SNF complex-mediated chromatin remodeling was recently implicated to regulate *SLC7A11* transcription (Ogiwara et al., 2019). It was shown that ARID1A, an integral component of SWI/SNF complexes, binds on the *SLC7A11* promoter and facilitates NRF2-mediated transcriptional activation of *SLC7A11* through chromatin remodeling by SWI/SNF complexes (Fig. 2); *ARID1A* deficiency results in *SLC7A11* transcriptional repression, impaired cystine uptake and GSH biosynthesis, and subsequently ROS induction (Ogiwara et al., 2019). Together, these recent studies highlight critical roles of histone modifications and chromatin remodeling in governing *SLC7A11* expression and ferroptosis.

### Posttranslational regulation of SLC7A11

Apart from transcriptional regulation as discussed above, *SLC7A11* expression can also be regulated at mRNA levels by nonsense-mediated mRNA decay and microRNAs (Liu et al., 2011; Drayton et al., 2014; Martin and Gardner, 2015; Wu et al., 2017), the detailed mechanisms of which have been discussed in a previous review (Koppula et al., 2018). Below we focus on various aspects of posttranslational regulation of *SLC7A11* as revealed by more recent studies.

Earlier studies identified adhesion molecule CD44 variant (CD44v) as a *SLC7A11*-binding partner that regulates *SLC7A11* protein stability, and showed that CD44v inactivation leads to decreased stability and defective cell surface localization of *SLC7A11*, resulting in compromised *SLC7A11* function in regulating GSH synthesis, redox maintenance, and tumor growth and metastasis (Ishimoto et al., 2011; Yae et al., 2012). Since CD44v is neither a ubiquitin ligase nor a DUB, how CD44v regulates *SLC7A11* protein stability had remained elusive. A recent study sheds light on this question. OTUB1, a DUB of the ovarian tumor (OTU) family, was identified as a *SLC7A11*-interacting protein which stabilizes *SLC7A11* by preventing *SLC7A11* from undergoing ubiquitination and proteasomal degradation (Fig. 2) (Gan, 2019; Liu et al., 2019). It was further shown that OTUB1, CD44v, and *SLC7A11* form a trimeric complex and that CD44v promotes *SLC7A11* protein stability by maintaining the interaction between OTUB1 and *SLC7A11*; consequently, inactivation of CD44v or OTUB1 destabilizes *SLC7A11* and increases ferroptosis sensitivity (Liu et al., 2019). The potential ubiquitin ligase which mediates *SLC7A11* ubiquitination and proteasomal degradation remains to be identified.

Recent evidence also indicated that, as a transmembrane protein localized on the plasma membrane, *SLC7A11* is also subjected to regulation by lysosomal degradation. As detailed in a later section, *SLC7A11* promotes glucose dependency, leading to the exquisite vulnerability of cancer cells with high *SLC7A11* expression (*SLC7A11*<sup>high</sup>) to glucose starvation (Goji et al., 2017; Koppula et al., 2017; Shin et al., 2017; Joly et al., 2020; Liu et al., 2020). It is known that cells cultured at high density survive much better than those cultured at low density under glucose starvation. A recent study showed that the better survival of cancer cells under higher density is at least partly achieved by downregulation of *SLC7A11* levels (Yamaguchi et al., 2020). Mechanistically, it was proposed that higher cell density inactivates mechanistic target of rapamycin complex 1 (mTORC1), resulting in *SLC7A11* degradation in lysosomes (Fig. 2). Although how cell density modulates mTORC1 activity was not revealed in this study, another recent study showed that high cell density activates LATS1/2 kinases, a key component in the Hippo pathway, which then phosphorylates Raptor, an integral component of mTORC1, resulting in mTORC1 inactivation (Gan et al., 2020). How mTORC1 inactivation subsequently promotes *SLC7A11* lysosomal degradation remains unknown currently.

mTOR exists in two distinct kinase complexes, mTORC1 and mTOR complex 2 (mTORC2). While mTORC1 coordinates nutrient and energy availability with protein synthesis and cell growth, mTORC2 integrates growth factor signaling to promote cell proliferation and survival mainly through phosphorylating AKT (Kim and Guan, 2019). Notably, SLC7A11 can be regulated not only by mTORC1 (Gan et al., 2020), but also by mTORC2 (Gu et al., 2017). It was shown that mTORC2 interacts with SLC7A11 and phosphorylates serine 26 located at the cytoplasmic region of SLC7A11 in response to growth factor stimulation, resulting in inhibition of its transporter activity (Fig. 2) (Gu et al., 2017). Interestingly, another study revealed that AKT, a major substrate of mTORC2, is capable of directly phosphorylating SLC7A11 on the same site, and AKT-mediated SLC7A11 phosphorylation also inhibits its cystine transport activity (Fig. 2) (Lien et al., 2017).

Other studies revealed that cell surface localization of SLC7A11 is also subjected to regulation. EGF receptor (EGFR) was shown to interact with SLC7A11 and maintain its appropriate localization on the plasma membrane (Tsuchihashi et al., 2016). Consequently, EGFR-expressing glioma cells exhibit increased cystine uptake and GSH biosynthesis as well as enhanced glutamate export, which together promote tumor growth and invasion (Tsuchihashi et al., 2016). Together, these emerging studies established that SLC7A11 can be regulated by diverse posttranslational mechanisms, including regulation of protein stability, localization, and transporter activity.

### SLC7A11 PROMOTES TUMOR DEVELOPMENT PARTLY VIA INHIBITING FERROPTOSIS

It is well established that cell death, most notably apoptosis, plays important roles in tumor suppression (Green and Evan, 2002; Igney and Krammer, 2002), and cell death resistance is a hallmark of cancer (Hanahan and Weinberg, 2011). Recent studies have unraveled that ferroptosis, similar to apoptosis, represents another powerful tumor suppression mechanism, which presumably has evolved to eliminate precancerous cells that have been exposed to metabolic stress or nutrient deprivation. Importantly, SLC7A11 has emerged as a central hub linking ferroptosis to its proposed tumor suppression function. In this section, we will discuss how SLC7A11-mediated ferroptosis suppression contributes to tumor development in the context of several tumor suppressors and oncogene pathways.

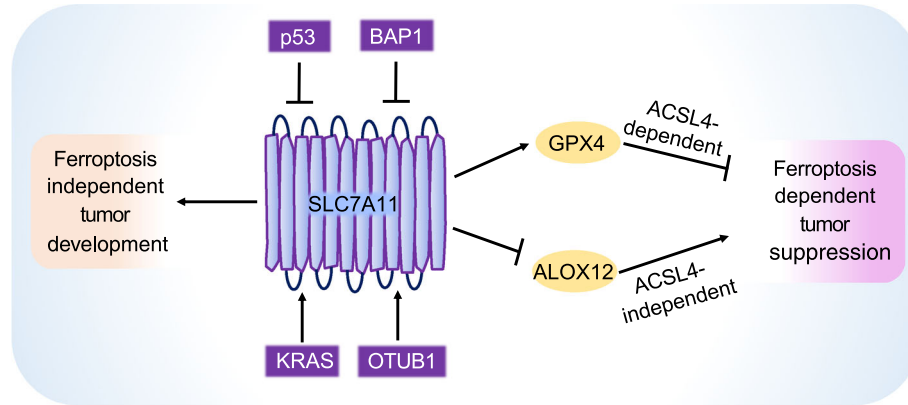
p53 is the most mutated tumor suppressor in human cancers (Muller and Vousden, 2013). Our mechanistic understanding of p53 function in tumor biology has provided great insights into the role of ferroptosis in tumor suppression. Traditionally, the tumor-suppressive function of p53 has been largely attributed to its roles in inducing cell cycle arrest, senescence, and/or apoptosis. Curiously, a p53 mutant that cannot be acetylated on certain lysine residues (3KR mutant) loses its ability to induce cell cycle arrest,

senescence, or apoptosis, yet is still capable of suppressing tumor formation *in vivo* (Li et al., 2012). This p53 mutant was later discovered to retain its tumor-suppressive function, at least partly by repressing SLC7A11 expression and inducing ferroptosis (Jiang et al., 2015). Mutation of an additional acetylation site at the backdrop of p53 3KR mutant markedly attenuated p53's capability to suppress tumor formation, repress SLC7A11 expression, and induce ferroptosis in cancer cells (Wang et al., 2016). An African-specific polymorphic mutant of p53 (S47 mutant) provides another evidence to link p53 regulation of SLC7A11 and ferroptosis to tumor suppression. Opposite to p53 3KR mutant, p53 S47 mutant retains its capability to induce cell cycle arrest and apoptosis, yet is unable to suppress tumor development (Jennis et al., 2016). It was further shown that this mutant exhibits impaired ability to repress SLC7A11 expression or induce ferroptosis, suggesting that SLC7A11 downregulation and ferroptosis induction play a role in p53-mediated tumor suppression. Collectively, these studies using different p53 mutants suggest that ferroptosis induction caused by SLC7A11 repression at least partly underlies p53 function in tumor suppression (Fig. 3).

It is well established that SLC7A11 inhibits ferroptosis through importing cystine, promoting GSH biosynthesis, and subsequently facilitating GPX4-mediated detoxification of lipid peroxides (Fig. 1) (Stockwell et al., 2017). Ferroptosis induced by SLC7A11 or GPX4 inactivation can be largely abolished by inactivation of ACSL4, a lipid metabolism enzyme (Doll et al., 2017; Kagan et al., 2017; Stockwell and Jiang, 2020). Interestingly, a recent study proposed that SLC7A11 suppression downstream of p53 promotes ferroptosis through GSH-GPX4- and ACSL4-independent mechanisms (Chu et al., 2019). Mechanistically, it was shown that SLC7A11 interacts with arachidonate 12-lipoxygenase (ALOX12), and this interaction suppresses ALOX12's lipoxygenase activity to mediate polyunsaturated fatty acid (PUFA) peroxidation, thereby inhibiting ferroptosis; consequently, inactivation of ALOX12, but not ACSL4, abrogates p53-mediated ferroptosis (Chu et al., 2019). Importantly, ALOX12 gene is frequently deleted in human cancers (Chu et al., 2019). It was further demonstrated that deletion of one *Alox12* allele in mouse promotes lymphomagenesis in E $\mu$ -Myc models, and that ALOX12 missense mutations derived from human cancers lose their capabilities to oxygenate PUFA and to promote p53-mediated ferroptosis (Chu et al., 2019). This study suggests that, in the context of p53 deficiency, SLC7A11 can promote tumor development through a non-canonical mechanism by directly interacting with ALOX12 and inhibiting ALOX12-mediated ferroptosis, which seems to be independent of its cystine transporting activity (Fig. 3).

BAP1 is another tumor suppressor that is frequently mutated or deleted in several human cancers (Carbone et al., 2013). As discussed above, recent studies identified SLC7A11 as a key downstream target of BAP1 (Zhang et al., 2018b). Functional analyses revealed that, by suppressing





**Figure 3. SLC7A11 promotes tumor development through both ferroptosis-dependent and -independent mechanisms.**

SLC7A11 promotes tumor development partly through detoxifying lipid peroxides and suppressing ferroptosis, which involves both ACSL4-dependent (via GPX4) and -independent (via ALOX12) pathways. Tumor suppressor proteins such as p53 and BAP1 inhibit tumorigenesis partly by suppressing SLC7A11 expression and promoting ferroptosis, while oncogenic KRAS and OTUB1 promote tumor development partly by promoting SLC7A11 levels and inhibiting ferroptosis. SLC7A11 can also promote tumorigenesis via pathways that are not dependent on its function to suppress ferroptosis. KRAS: Kirsten rat sarcoma viral oncogene homolog, OTUB1: OTU deubiquitinase, ubiquitin aldehyde binding 1, p53: tumor protein p53, BAP1: BRCA1 associated protein-1, ACSL4: Acyl-CoA synthetase long chain family member 4, GPX4: glutathione peroxidase 4, ALOX12: arachidonate 12-lipoxygenase.

SLC7A11 transcription, BAP1 inhibits cystine uptake and GSH biosynthesis and promotes ferroptosis under various ferroptosis-inducing conditions; furthermore, tumor growth suppression caused by BAP1 restoration in BAP1-deficient tumors can be partly abolished by SLC7A11 overexpression or treatment with ferroptosis inhibitor, and BAP1 mutations derived from human cancers abrogate their abilities to suppress SLC7A11 expression and to induce ferroptosis (Zhang et al., 2018b). Therefore, similar to p53, BAP1 suppresses tumor development at least partly by inducing ferroptosis upon SLC7A11 repression (Fig. 3) (Zhang et al., 2019c). However, unlike p53, it seems that BAP1 promotes ferroptosis through the canonical function of SLC7A11 (i.e., through SLC7A11-mediated cystine uptake to promote GSH biosynthesis). Since both p53 and BAP1 regulate SLC7A11 at the transcriptional level, it remains unclear how SLC7A11 shifts between its canonical and non-canonical functions in ferroptosis regulation in these two different contexts.

In cancer cells, not only de-repression of SLC7A11 expression, but also stabilization of SLC7A11 protein can lead to enhanced tumor formation through inhibiting ferroptosis. As discussed in the previous section, OTUB1 deubiquitinates and stabilizes SLC7A11 protein (Liu et al., 2019). Consequently, OTUB1 promotes tumor development partly via stabilizing SLC7A11 and inhibiting ferroptosis (Fig. 3) (Liu et al., 2019). Since OTUB1 is frequently overexpressed in human cancers, high SLC7A11 levels in some cancers might result from post-translational regulation by OTUB1.

Emerging data suggest that SLC7A11-mediated ferroptosis inhibition not only plays a role in tumor development caused by loss of tumor suppressors (such as p53 and

BAP1), but also contributes to oncogene-driven tumorigenesis. KRAS is one of the most mutated proto-oncogene in human cancers, and is highly mutated in a variety of cancers, including pancreatic ductal adenocarcinomas (PDAC), lung cancer, and colorectal cancer (Prior et al., 2012). Recent studies showed that oncogenic KRAS promotes SLC7A11 transcription, resulting in increased SLC7A11-mediated cystine uptake and GSH biosynthesis (Fig. 3) (Lim et al., 2019; Hu et al., 2020). Mechanistically, one study suggested that ETS-1 transcription factor mediates oncogenic KRAS-induced SLC7A11 expression via cooperation with ATF4 (Lim et al., 2019), while the other study indicated that oncogenic KRAS promotes SLC7A11 transcription through NRF2 (Hu et al., 2020). It was further shown that genetic ablation or pharmacological inhibition of SLC7A11 markedly attenuates oncogenic KRAS-induced tumor growth in xenograft models (Lim et al., 2019; Hu et al., 2020). More than 90% of PDAC harbor KRAS mutations (Prior et al., 2012). SLC7A11 inactivation, genetically or pharmacologically, was shown to potently induce lipid peroxidation and ferroptotic cell death in pancreatic cancer cells (Daher et al., 2019; Badgley et al., 2020); further studies using genetically engineered mouse models (GEMMs) demonstrated that deletion of *Slc7a11* significantly suppresses oncogenic *Kras*-driven PDAC development with ferroptosis induction in *Slc7a11*-deficient pancreatic tumors with oncogenic *Kras* activation (Badgley et al., 2020), suggesting that SLC7A11-mediated ferroptosis suppression likely contributes to KRAS-driven PDAC development.

It should be noted that not all SLC7A11 expression alterations in cancers can be linked to its presumed function to mitigate ferroptosis and promote tumor development.

Tumor suppressor *ARID1A* is frequently mutated in multiple forms of cancers (Jones et al., 2010; Mao and Shih le, 2013). As discussed in the previous section, ARID1A-containing SWI/SNF complex promotes *SLC7A11* transcription. In contrast to *p53* or *BAP1* deficiency (wherein tumor suppressor deficiency increases *SLC7A11* expression), *ARID1A* deficiency suppresses *SLC7A11* expression in cancer cells (Ogiwara et al., 2019). It was further shown that the suppressed *SLC7A11* expression results in decreased cystine uptake and GSH biosynthesis in *ARID1A*-deficient cancer cells, which induces a vulnerability rendering *ARID1A*-deficient cancers susceptible for pharmacological inhibition of GSH biosynthesis (Ogiwara et al., 2019). Tumors with *p53* gain-of-function mutations present another example wherein tumors actually exhibit reduced *SLC7A11* levels. While many tumors harbor *p53* loss-of-function mutations or deletions, others contain oncogenic gain-of-function mutations of *p53*, resulting in the expression of mutant *p53* protein in tumors, and such tumors often exhibit poor prognosis and aggressive tumor phenotypes (Muller and Vousden, 2013). Based on the findings that wild-type (WT) *p53* represses *SLC7A11* expression and *p53* deficiency promotes *SLC7A11* expression in cancer cells (Jiang et al., 2015), one would expect that *p53* mutants with oncogenic functions, similar to *p53* deficiency, should promote *SLC7A11* expression. In contrast, it was demonstrated that *p53* mutants somehow gain additional functional capabilities to inhibit NRF2-mediated transcriptional activation of *SLC7A11*, resulting in decreased levels of *SLC7A11* and GSH and increased ROS and lipid peroxidation in *p53* mutant cancer cells, and rendering such tumors more sensitive to *SLC7A11* inhibitors such as sulfasalazine (Liu et al., 2017). Whether NRF2 is involved in WT *p53*-mediated *SLC7A11* repression remains to be examined.

To summarize, consistent with the known role of *SLC7A11* in suppressing ferroptosis and the emerging concept that ferroptosis is a tumor suppression mechanism, various studies have revealed that loss of tumor suppressors (such as *p53* and *BAP1*) (Jiang et al., 2015; Zhang et al., 2018b), mutation of proto-oncogenes (such as *KRAS*) (Badgley et al., 2020), or overexpression of proteins with pro-tumorigenic functions (such as OTUB1) (Liu et al., 2019) increases *SLC7A11* levels in cancer (by either upregulating its transcription or stabilizing its protein), resulting in ferroptosis suppression and enhanced tumor development (Fig. 3). However, not all tumors show increased *SLC7A11* levels, and some tumors (such as *ARID1A*-deficient tumors or tumors with *p53* gain-of-function mutations) even exhibit decreased *SLC7A11* levels (Liu et al., 2017; Ogiwara et al., 2019). In this latter scenario, the decreased *SLC7A11* levels apparently cannot explain tumor phenotypes in the corresponding cancers; instead, it is proposed that this decreased *SLC7A11* expression creates an Achilles heel for therapeutic targeting in tumors with low expression of *SLC7A11*, as such tumors presumably should be more vulnerable to oxidative stress.

## FERROPTOSIS-INDEPENDENT FUNCTIONS OF SLC7A11 IN PROMOTING TUMOR DEVELOPMENT

Although this review so far has somewhat focused on the anti-ferroptosis function of *SLC7A11* in tumor biology (partly because ferroptosis is a relatively recently discovered cell death mechanism), we want to emphasize that *SLC7A11*'s roles in tumor biology clearly go beyond regulating ferroptosis. In this section, we also discuss several other functions of *SLC7A11* which likely operate independent of ferroptosis (Fig. 3).

While *SLC7A11*'s function in suppressing ferroptosis is well established, other studies have shown that *SLC7A11* inactivation can also induce apoptosis. It was initially shown that *Slc7a11* deficiency in mouse melanocytes induces substantial cell death accompanied with features of apoptosis such as caspase-3 cleavage (Qiao et al., 2008). Subsequent studies revealed that *SLC7A11* inhibition can induce apoptosis in cancer cells under different contexts (Liu et al., 2011; Yoshikawa et al., 2013; Dai et al., 2014). While erastin potently induces ferroptosis by inhibiting *SLC7A11*-mediated cystine uptake (Stockwell et al., 2017), HG106, another recently identified *SLC7A11* inhibitor, does not induce ferroptosis but mainly induces apoptosis (Hu et al., 2020). Since these studies suggested that *SLC7A11* inactivation-induced apoptosis is likely driven by GSH depletion and ROS induction, it remains to be established how GSH depletion resulting from *SLC7A11* inactivation can induce different modes of cell death (ferroptosis vs apoptosis) under different conditions or contexts. The differential effects of erastin and HG106 may relate to their different potencies or off-target effects as well as different cell lines used in these studies (such that *SLC7A11* inactivation results in ferroptosis in one cell line but induces apoptosis in another cell line). Future studies using respective cell death inhibitors or cell death deficient cells (such as *BAX/BAK* or *ACSL4* KO cells) are required to address these questions. Furthermore, a side-by-side comparison between erastin and HG106 in the same cell lines will be critical to clarify the differential cell death-inducing effects of these *SLC7A11* inhibitors.

In addition, inhibition of *SLC7A11*, genetically or pharmacologically, has been shown to result in cellular defects typically associated with oncogenic pathway inactivation, including suppression of cell proliferation/growth and invasion, defective clonogenic survival, and decreased anchorage-independent growth, whereas *SLC7A11* overexpression can exert the opposite cellular effects (Ishimoto et al., 2011; Yae et al., 2012; Yang and Yee, 2014; Ji et al., 2018; Shin et al., 2018; Hu et al., 2020). Although the underlying mechanisms are often not definitively established, *SLC7A11*'s ability to promote GSH biosynthesis has been attributed to regulate these cellular functions. In another study, *SLC7A11*-mediated glutamate export has been linked to the increased invasiveness of breast cancer cells (Dornier et al., 2017).

As noted above, various stress conditions induce *SLC7A11* expression to promote cellular adaption to stress

conditions. Correspondingly, it is well established that SLC7A11 promotes drug-, chemo-, and radio-resistance in cancer cells. SLC7A11 overexpression has been shown to correlate with or functionally promote resistance to various therapeutic drugs, such as cisplatin, gemcitabine, and MAPK pathway inhibitors (Okuno et al., 2003; Lo et al., 2008; Wang et al., 2018). SLC7A11 also confers resistance to geldanamycin, thereby promoting chemoresistance (Huang et al., 2005). Finally, it was shown that radiation can induce SLC7A11 expression (Xie et al., 2011; Lei et al., 2020), and SLC7A11 overexpression promotes radioresistance, whereas SLC7A11 inhibition enhances radiosensitivity in cancer cells or tumors (Cobler et al., 2018; Nagane et al., 2018; Lei et al., 2020); importantly, the radioresistance caused by SLC7A11 overexpression was largely abolished under ferroptosis inhibitor treatment (Lei et al., 2020), suggesting that SLC7A11 promotes radioresistance mainly through inhibiting ferroptosis. It remains to be determined whether ferroptosis inhibition also plays a role in SLC7A11-mediated drug- or chemo-resistance, although it is generally believed that SLC7A11 promotes these resistance phenotypes through enhancing GSH synthesis.

Most of the cellular functions we have discussed so far relate to cell autonomous effects regulated by SLC7A11. Emerging evidence indicated that SLC7A11 can also exert cell non-autonomous effects on tumor microenvironment through glutamate exporting. A recent study revealed that treatment with VEGF blockade agents in a glioma mouse model leads to increased expression of SLC7A11, and it was proposed that glutamate exported by SLC7A11 from tumor cells then promotes the proliferation and immunosuppressive function of regulatory T-cells (Tregs), which contributes to adaptive resistance to anti-VEGF therapy in glioblastoma (Long et al., 2020). It was further shown that blocking Tregs using anti-CD25 antibody could sensitize tumors to VEGF blockade agents (Long et al., 2020). While most studies have focused on SLC7A11-mediated cystine import, this study suggests that SLC7A11-mediated glutamate export can cross-talk with and modulate tumor immune systems, which in turn influence tumor growth and response to cancer therapies.

In summary, ferroptosis-independent functions of SLC7A11 in tumor biology include its regulation of other non-ferroptotic cell death, cell proliferation, cell invasion, chemo-/drug-/radio-resistance, and tumor immunity, which can be achieved through SLC7A11-mediated cystine import and/or glutamate export.

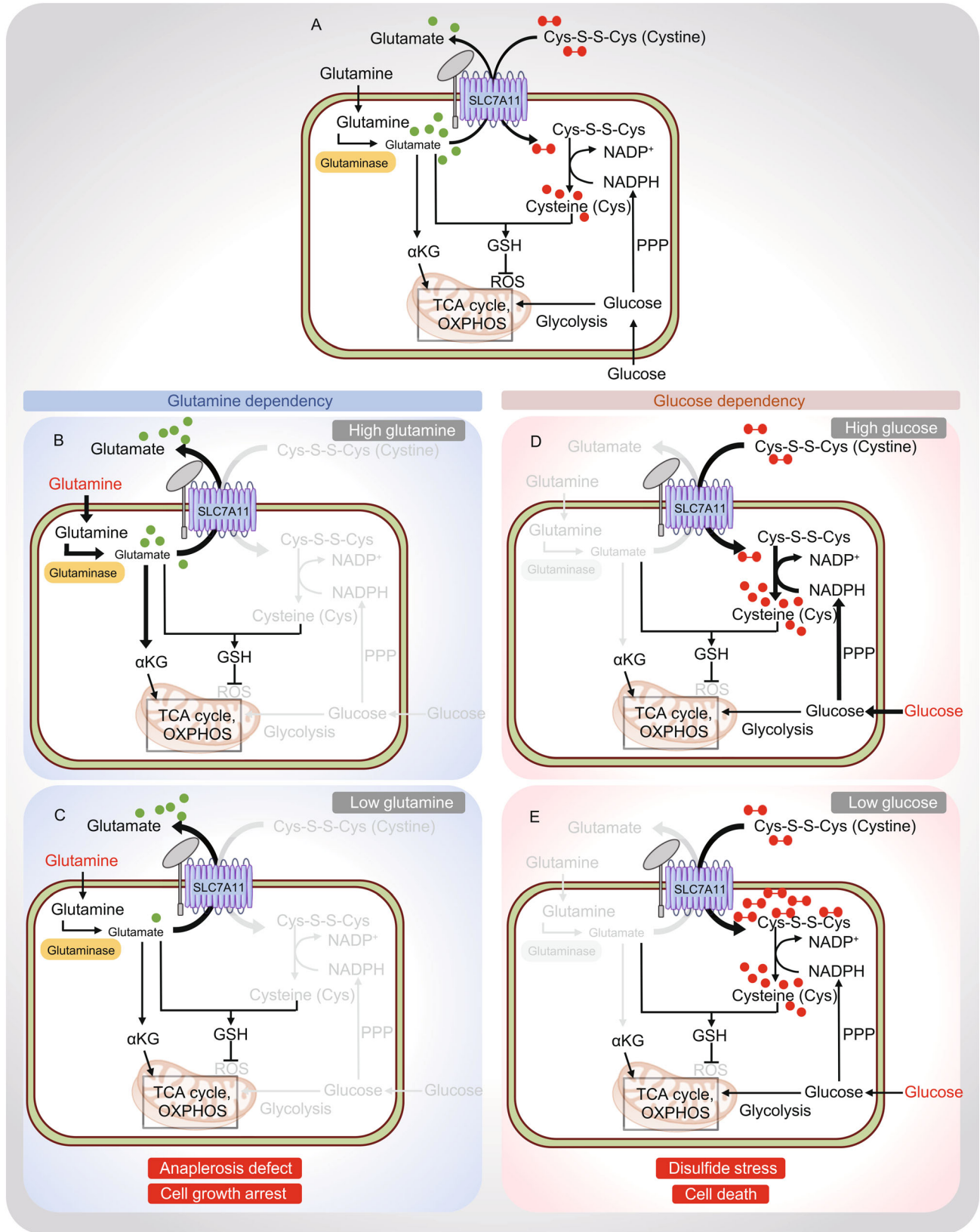
## SLC7A11 INDUCES NUTRIENT DEPENDENCY IN CANCER CELLS

As extensively discussed in previous sections, SLC7A11-mediated cystine uptake is critical for cancer cells to suppress ferroptosis and to maintain redox homeostasis and biomass incorporation. Many cancer cells upregulate

SLC7A11 levels to enhance their capability to obtain extracellular cystine. Emerging evidence indicates that, however, this comes at a significant cost for SLC7A11<sup>high</sup> cancer cells. In our view, these “costs” are mainly derived from two metabolic features associated with cystine uptake mediated by SLC7A11. First, as an antiporter, SLC7A11-mediated cystine uptake is coupled with glutamate export (Fig. 4A). Consequently, a significant amount of intracellular glutamate is exported out of cells in exchange for cystine uptake in SLC7A11<sup>high</sup> cancer cells. Indeed, it was estimated that 30%–50% of intracellular glutamate is exported by SLC7A11 in exchange for extracellular cystine (Bannai and Ishii, 1988). In addition, due to the oxidizing extracellular environment, extracellular cystine is much more stable than extracellular cysteine, resulting in a much higher concentration of extracellular cystine than that of extracellular cysteine. In order to obtain cysteine, cancer cells primarily rely on taking up extracellular cystine (rather than extracellular cysteine) and then need to convert intracellular cystine to cysteine (Fig. 4A) (this feature is unique in nutrient uptake. For most other nutrients, such as glucose and glutamine, cells can directly take up the nutrients they require through corresponding nutrient transporters). Because the reduction of cystine to cysteine consumes NADPH, cells need to first make redox “investment” (in the form of NADPH) in order to obtain cysteine for maintaining redox homeostasis [which is somewhat similar to “ATP investment” made in glycolysis, wherein two molecules of ATP are “invested” (i.e., consumed) in the first several steps of glycolysis in order to activate glucose for its subsequent generation of four molecules of ATPs in the later steps of glycolysis]. Consequently, these two “costs” associated with SLC7A11-mediated cystine uptake, namely glutamate export and NADPH consumption for cystine reduction, drive SLC7A11<sup>high</sup> cancer cells to be highly dependent on glutamine and glucose. In this section, we will discuss recent studies leading to our current understanding of SLC7A11-induced glutamine and glucose dependency.

## SLC7A11-induced glutamine dependency in cancer cells

Glutamine is a critical amino acid that supports bioenergetic and biosynthetic processes and maintains redox balance in cancer cells (Hensley et al., 2013). It is also the most abundant amino acid in plasma as well as in cell culture media. Once imported into cells via SLC1A5 and other transporters, glutamine is converted to glutamate via glutaminase. Glutamate has several important functions in cellular metabolism, prominent among which are its roles in anaplerosis [replenishing the tricarboxylic acid (TCA) cycle through its conversion to TCA cycle intermediate  $\alpha$ -ketoglutarate ( $\alpha$ KG)] and as a precursor for GSH synthesis (Fig. 4A) (Hensley et al., 2013). As noted above, glutamate is also exported out of cells via SLC7A11 in exchange for extracellular cystine. In SLC7A11<sup>high</sup> cancer cells, high



◀ **Figure 4. SLC7A11 regulates glucose and glutamine dependencies in cancer cells.** (A) SLC7A11 functions to import extracellular cystine in exchange for intracellular glutamate. Extracellular glutamine is imported into the cell and converted to glutamate by Glutaminase. Subsequently, glutamate serves to fuel the TCA cycle via its conversion to  $\alpha$ -ketoglutarate and acts as a precursor for GSH synthesis. The other arm of SLC7A11 transporter function imports extracellular cystine. Once imported into the cell, cystine is reduced to cysteine by the consumption of NADPH. Cysteine then serves as the rate limiting precursor for GSH synthesis, and GSH suppresses ROS. NADPH is mainly supplied from glucose via the PPP. Consequently, an imbalance in this metabolic network leads to specific metabolic dependencies in SLC7A11<sup>high</sup> cancer cells. (B and C) *Glutamine dependency*: In SLC7A11<sup>high</sup> cancer cells, increased glutamate export results in a partial depletion of intracellular glutamate that can feed into the TCA cycle. This pushes SLC7A11<sup>high</sup> cancer cells to uptake more glutamine and activates glutaminase to promote glutamine conversion to glutamate, resulting in glutamine dependency (B). When SLC7A11<sup>high</sup> cancer cells (with increased glutamate export) are challenged with low glutamine availability, intracellular glutamate is inadequate to fuel the TCA cycle, resulting in anaplesrosis defect and cell growth arrest (C). (D and E) *Glucose dependency*: In SLC7A11<sup>high</sup> cancer cells, large amount of extracellular cystine is imported into the cell. Due to its low solubility, buildup of intracellular cystine is likely toxic, forcing cells to quickly reducing cystine to much more soluble cysteine in the cytosol. Because this reaction requires NADPH and cytosolic NADPH is mainly supplied from glucose via the PPP, SLC7A11<sup>high</sup> cancer cells exhibit glucose-PPP dependency. (D) Limiting glucose availability in SLC7A11<sup>high</sup> cancer cells leads to NADPH depletion, accumulation of intracellular cystine and other disulfide molecules resulting in disulfide stress and rapid cell death (E). GSH: reduced glutathione, PPP: pentose phosphate pathway, TCA cycle: tricarboxylic acid cycle,  $\alpha$ KG:  $\alpha$ -ketoglutarate.

glutamate export results in a partial depletion of intracellular glutamate, which then drives cells through the relief of feedback inhibition to take up more glutamine as well as to activate glutaminase for glutamate replenishment, leading to glutamine dependency in SLC7A11<sup>high</sup> cancer cells (Fig. 4B). Consequently, SLC7A11<sup>high</sup> cancer cells are more sensitive to glutamine starvation (Fig. 4C).

This model has been supported by several studies in recent years. An analysis of glutamine uptake and dependency across a wide range of breast cancer cells revealed that, compared to normal mammary epithelial cells and basal breast cancer cells, most basal and claudin-low triple-negative breast cancer (TNBC) cells consume more glutamine and exhibit more glutamine dependency (Timmerman et al., 2013). Differential glutamine dependency among these breast cancer cells does not correlate with the expression levels of known regulators in glutamine metabolism, such as glutaminase; instead, it was shown that the sensitivities of

these cells to glutamine deprivation correlate with SLC7A11 expression levels and cystine consumption rates (i.e., compared to other breast cancer cell lines, basal and claudin-low TNBC cells express higher levels of SLC7A11, exhibit more cystine consumption, and are more sensitive to glutamine deprivation) (Timmerman et al., 2013). These data suggest that the glutamine dependency phenotype observed in these TNBC cells is likely driven by the high expression of SLC7A11 and the high rate of SLC7A11-mediated cystine uptake in these cells.

In another study aimed to identify the environmental factors that underlie the less glutamine dependence of tumor cells grown *in vivo* than those grown *in vitro*, cystine was identified as the sole factor that causes the higher glutamine dependency for cancer cells cultured in standard cell culture media than the same cells cultured in media that better mimic *in vivo* conditions; therefore, compared to *in vivo* conditions, higher levels of cystine in standard cell culture media drive more SLC7A11-mediated cystine uptake and glutamate export, resulting in more glutamine dependency and more cellular sensitivity to glutaminase inhibition (Muir et al., 2017). As discussed in a previous section, SLC7A11 transcription is controlled by the KEAP1-NRF2 signaling axis. In line with this, it was shown that cancer cells with KEAP1 mutation and/or NRF2 hyperactivation exhibit increased glutamine dependency and enhanced sensitivity to glutamine deprivation or glutaminase inhibition, partly via high SLC7A11-mediated glutamate export in these cancer cells (Romero et al., 2017; Sayin et al., 2017).

#### SLC7A11-induced glucose dependency in cancer cells

One hallmark of metabolic reprogramming in cancer cells is the deregulated uptake of glucose (Pavlova and Thompson, 2016). Upon its transport into cells through glucose transporters (GLUTs), glucose is subsequently shunted into two major metabolic pathways, glycolysis and the pentose phosphate pathway (PPP) (Vander Heiden et al., 2009). Via glycolysis, glucose is metabolized to pyruvate, which can be oxidized by the TCA cycle to generate ATP. By contrast, the PPP uses glucose to generate both ribose-5-phosphate, for nucleic acid synthesis, and NADPH, which provides the reducing power to support reductive biosynthetic reactions and to maintain cellular redox homeostasis.

Glucose is one of the principal nutrients supporting cancer cell survival (Vander Heiden et al., 2009; Boroughs and DeBerardinis, 2015). Several studies independently revealed that SLC7A11<sup>high</sup> cancer cells are highly dependent on glucose for survival and are exquisitely sensitive to glucose starvation-induced cell death (Goji et al., 2017; Koppula et al., 2017; Shin et al., 2017; Liu et al., 2020). In one study, loss-of-function screens uncovered both SLC7A11 and SLC3A2 as the top genes whose inactivation promotes cell survival under glucose starvation (Shin et al., 2017). In another study, SLC7A11 expression was identified to be highly induced upon glucose starvation (Koppula et al.,

2017). As discussed in previous sections, stress-induced SLC7A11 expression generally serves as an adaptive response to protect cells from stress-induced cell death (such as ferroptosis); therefore, it was initially hypothesized that glucose starvation-induced SLC7A11 expression might protect cells from cell death triggered by glucose starvation. Surprisingly, it was subsequently shown that SLC7A11 overexpression drastically promotes glucose starvation-induced cell death, whereas SLC7A11 inactivation significantly suppresses cell death under glucose starvation (Koppula et al., 2017; Shin et al., 2017). Together, these studies revealed that SLC7A11 promotes glucose dependency in cancer cells.

While it is easy to understand the metabolic underpinning of SLC7A11-induced glutamine dependency (given that SLC7A11-mediated glutamate export is directly linked to glutamine metabolism), how SLC7A11 promotes glucose dependency has remained less clear (partly because SLC7A11-associated metabolism is not directly connected to glucose metabolism). Since both glucose and glutamate are important for TCA cycle anaplerosis and mitochondrial respiration, it was initially proposed that, because SLC7A11-mediated glutamate export decreases intracellular glutamate reserves, SLC7A11<sup>high</sup> cancer cells are forced to have more reliance on glucose to replenish the TCA cycle (presumably through glycolysis) and to maintain mitochondrial respiration, resulting in glucose dependency (Koppula et al., 2017; Shin et al., 2017). In support of this, it was shown that supplementation of  $\alpha$ KG, a TCA cycle intermediate derived from glutamate, rescues glucose starvation-induced cell death in SLC7A11<sup>high</sup> cancer cells (Koppula et al., 2017; Shin et al., 2017). However, other recent data argued against this model. For example, this model would predict that SLC7A11 overexpression should promote glycolytic flux and that SLC7A11<sup>high</sup> cancer cells should be sensitive to glycolysis inhibitors. However, a recent study showed that SLC7A11 overexpression does not promote glycolytic flux and that 2-deoxyglucose (2DG), a glycolysis inhibitor, even rescues glucose starvation-induced cell death in SLC7A11<sup>high</sup> cancer cells (the underlying mechanism will be described below) (Koppula et al., 2017; Shin et al., 2017). Furthermore, it was shown that cystine starvation rescues the cell death in SLC7A11<sup>high</sup> cancer cells under glucose starvation, suggesting that it is cystine import that underlies glucose starvation-induced cell death in SLC7A11<sup>high</sup> cancer cells (Goji et al., 2017; Joly et al., 2020; Liu et al., 2020).

Mechanistically, it was proposed that, because cystine is highly insoluble, significant buildup of intracellular cystine potentially is toxic to cells, forcing SLC7A11<sup>high</sup> cancer cells to quickly reduce cystine to much more soluble cysteine once cystine is taken up into cells. Since cystine reduction to cysteine consumes NADPH, this renders SLC7A11<sup>high</sup> cancer cells to be highly dependent on the glucose-PPP route (which is the major provider of cellular NADPH) to supply NADPH for cystine reduction (Fig. 4D). Consequently, glucose starvation limits NADPH supply, resulting in NADPH

depletion, marked accumulation of cystine and other disulfide molecules, ROS accumulation, and rapid cell death (Fig. 4E). It should be noted that the fold changes of these redox defects are much more pronounced than that of glutamate level decrease in SLC7A11<sup>high</sup> cancer cells under glucose starvation, and thereby correlate better with the rapid and dramatic cell death observed in these cells upon glucose starvation (Liu et al., 2020). In further support of this model, glucose starvation-induced cell death and redox defects in SLC7A11<sup>high</sup> cancer cells can be substantially blocked by treatments that restore NADPH levels and prevent cystine accumulation, such as treatment with 2DG (which inhibits glycolysis but can still be shunted into the PPP to generate NADPH) (Liu et al., 2020), suggesting that it is cystine accumulation and/or NADPH depletion resulting from cystine uptake that causes the cell death in SLC7A11<sup>high</sup> cancer cells under glucose starvation.

There are several peculiar features associated with SLC7A11-induced glucose dependency that are worth further discussion. Because SLC7A11 has a well-established role in suppressing ROS under oxidative stress conditions, the observation that SLC7A11 overexpression dramatically increases ROS levels (Goji et al., 2017; Liu et al., 2020) under glucose starvation is rather counterintuitive. Earlier, we introduced the concept that cells need to first make redox “investment” (by supplying NADPH to reduce cystine to cysteine) in order to obtain cysteine for its subsequent utilization in redox maintenance. These data suggest that the failure in appropriately maintaining this redox “investment” (such as under glucose starvation) can have devastating cellular consequences by “bankrupting” the redox system in SLC7A11<sup>high</sup> cancer cells—somewhat analogous to company bankruptcy resulting from finance investment mismanagement. In addition, as discussed in previous sections, cystine in culture media is generally required for cell survival and cystine starvation is well known to induce ferroptosis; therefore, the observation that cystine starvation also rescues glucose starvation-induced cell death in SLC7A11<sup>high</sup> cancer cells seems confusing. It should be noted that glucose starvation-induced cell death in SLC7A11<sup>high</sup> cancer cells is not ferroptosis (Liu et al., 2020) and that SLC7A11<sup>high</sup> cancer cells have high intracellular cysteine reserves and therefore are generally resistant to cystine starvation (Zhang et al., 2018b; Liu et al., 2020). Consequently, at the time points when cystine starvation has not induced obvious ferroptosis in SLC7A11<sup>high</sup> cancer cells, it actually prevents glucose starvation-induced cell death in these cells. In other words, in SLC7A11<sup>high</sup> cancer cells, glucose starvation induces far more acute cellular toxicity than cystine starvation.

Taken together, these studies suggest that SLC7A11 overexpression induces both glutamine and glucose dependency in cancer cells with different underlying mechanisms. While SLC7A11-induced glutamine dependency mainly results from glutamate-derived anaplerosis (Fig. 4B), it seems that SLC7A11-induced glucose dependency largely

relates to cystine-associated redox maintenance (although glutamate-derived anaplerosis might still play a role in it) (Fig. 4D). Correspondingly, the cellular phenotypes in SLC7A11<sup>high</sup> cancer cells in response to glutamine or glucose deprivation seem somewhat different: while glutamine deprivation (or glutaminase inhibition) mainly suppresses the cell growth in SLC7A11<sup>high</sup> cancer cells (which is in line with anaplerosis defects in these cells) (Romero et al., 2017) (Fig. 4C), glucose starvation induces rapid cell death in SLC7A11<sup>high</sup> cancer cells (consistent with drastic redox system collapse in this context) (Goji et al., 2017; Koppula et al., 2017; Shin et al., 2017; Liu et al., 2020) (Fig. 4E). In further support of this, N-acetyl cysteine (NAC) largely rescues cell death in SLC7A11<sup>high</sup> cancer cells under glucose starvation (Liu et al., 2020), but does not rescue the growth defect of these cells upon glutamine deprivation or glutaminase inhibition (Romero et al., 2017). In the next section, we will further discuss how our mechanistic understanding of SLC7A11-induced nutrient dependency can help inform therapeutic strategies to target SLC7A11 in cancer.

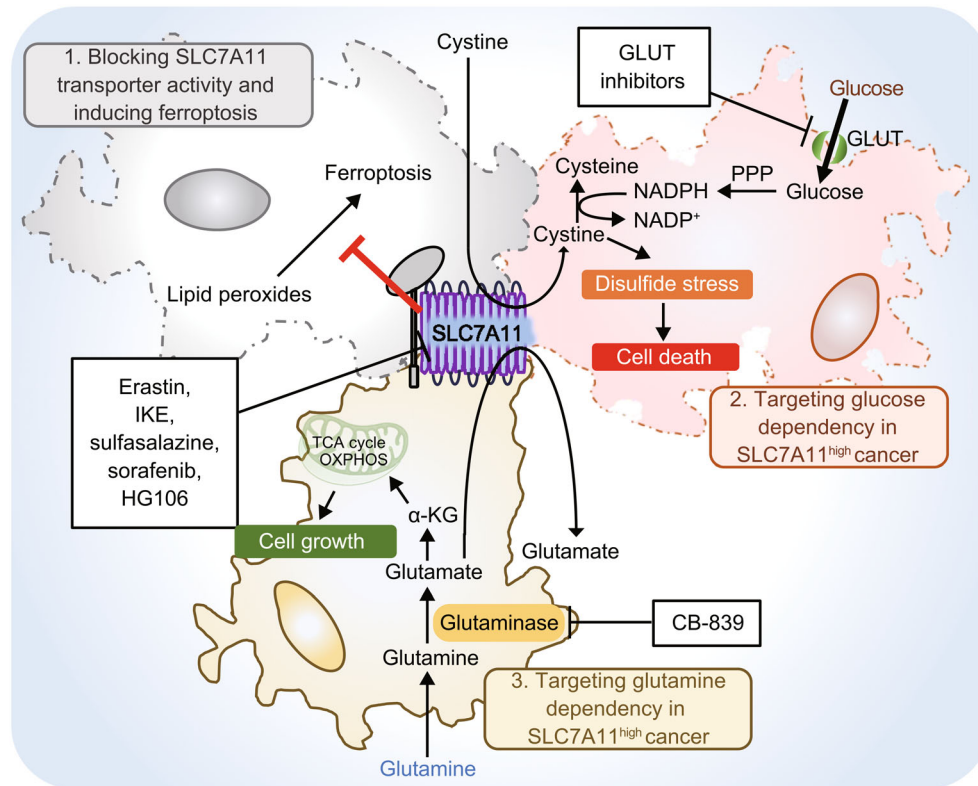
## THERAPEUTIC STRATEGIES TARGETING SLC7A11 IN CANCER

In recent years, SLC7A11 has emerged as a promising therapeutic target in cancer therapy. To achieve appropriate therapeutic index in cancer therapy, the ideal therapeutic target being inhibited by cancer drugs presumably should have a selective role in tumor growth with a dispensable function in normal physiology, so that the corresponding drugs can produce the desired toxic effects in cancer cells (or tumors) without unwanted side effects in normal cells (or normal tissues). This seems to be the case for SLC7A11. *Slc7a11* KO mice are viable, with no obvious phenotype in the major organs (Sato et al., 2005). Subsequent analyses revealed defects in spatial working memory and skin pigmentation in *Slc7a11* KO or mutant mice (Chintala et al., 2005; De Bundel et al., 2011); nonetheless, these phenotypes are relatively minor. Considering the essential role of SLC7A11 in defending ferroptosis, the mild phenotype from *Slc7a11* KO mice may seem somewhat surprising (as a comparison, germline or postnatal deletion of *Gpx4*, another essential anti-ferroptosis regulator, results in embryonic or adult lethality, respectively (Yant et al., 2003; Friedmann Angeli et al., 2014)). It is possible that normal cells or tissues can compensate for the loss of SLC7A11 by obtaining intracellular cysteine through *de novo* cysteine synthesis or cystine (or cysteine) uptake via additional transporters (such as SLC7A9-mediated cystine uptake in the kidney) (Stipanuk, 2004; Kandasamy et al., 2018). Because cancer cells often experience high levels of oxidative stress (Chio and Tuveson, 2017), they have significantly increased needs in antioxidant defense and therefore are much more dependent on SLC7A11-mediated cystine uptake to obtain cysteine and to maintain redox homeostasis than are normal tissues—much analogous to oncogene addiction in cancer

development. Consistent with this, SLC7A11 is overexpressed in multiple cancer types, including lung cancer, TNBC, PDAC, renal cell carcinoma, liver cancer, and glioma, and its high expression often correlates with poor prognosis (Timmerman et al., 2013; Ji et al., 2018; Koppula et al., 2018; Zhang et al., 2018a; Zhang et al., 2018b; Badgley et al., 2020). In further support of this, deletion of *Slc7a11* in adult mice does not affect normal pancreas development but significantly impairs Kras-driven PDAC development (Badgley et al., 2020).

These two characteristics of SLC7A11, namely its dispensability in normal physiology and its high expression in cancers, suggest that targeting SLC7A11 likely can selectively kill tumor cells and impair tumor growth while sparing normal cells or tissues, therefore nominating SLC7A11 as a promising therapeutic target in cancer treatment. Below, we further discuss recent preclinical studies aimed to target SLC7A11 in cancer. To help readers better understand these works, we have conceptualized these studies into two broad strategies (Fig. 5). The first involves directly inhibiting SLC7A11 transporter activity, whereas the other relates to targeting SLC7A11-associated metabolic vulnerabilities (glucose or glutamine dependency) in cancer. (To make an analogy here, these strategies are similar to those used to target KRAS-driven cancers: while some investigators have focused on directly inhibiting oncogenic KRAS, with the recently developed Kras (G12C) inhibitor AMG510 as a notable example (Canon et al., 2019), others have aimed instead to target KRAS-associated vulnerabilities, for example, the efforts to identify synthetically lethal interactions with KRAS (Cox et al., 2014)).

Several compounds have been identified or characterized as SLC7A11 inhibitors, including erastin, imidazole ketone erastin (IKE), sulfasalazine, sorafenib, and HG106 (Feng and Stockwell, 2018; Hu et al., 2020). Given their capabilities of inducing ferroptosis through blocking SLC7A11-mediated cystine uptake, erastin, IKE, sulfasalazine, and sorafenib are also collectively called class 1 ferroptosis inducers (FINs) in ferroptosis studies. From the therapeutic point of view, each of these compounds has its pros and cons. Erastin probably is the most widely used SLC7A11 inhibitor or class 1 FIN in cell culture studies; however, due to its poor metabolic stability and low solubility *in vivo*, erastin cannot be used for animal studies (Feng and Stockwell, 2018), preventing its further testing in preclinical or clinical studies. IKE is an erastin analog with nanomolar potency and high metabolic stability that is suitable for animal treatment (Zhang et al., 2019b). Recent studies using GEMMs also demonstrated its efficacy in suppressing Kras-driven PDAC development (Badgley et al., 2020). However, because IKE was developed relatively recently, it has not moved to the clinical trial stage yet. Sorafenib and sulfasalazine, in contrast, are drugs that were already approved by the U.S. Food and Drug Administration (FDA). Previous studies showed that both drugs inhibit SLC7A11 transporter activity, and can induce ferroptosis and suppress tumor growth *in vivo* (Feng and



**Figure 5. Therapeutic strategies to target SLC7A11 in cancer.** The antiporter function of SLC7A11 offers several strategies for therapeutic targeting. (1) Direct blocking of SLC7A11 cystine transporter activity using its inhibitors such as erastin, IKE, sulfasalazine, sorafenib, and HG106. These drugs inhibit cystine uptake by SLC7A11, thereby inducing lipid peroxidation and ferroptotic cell death. (2) Targeting glucose dependency in SLC7A11<sup>high</sup> cancer cells by inhibiting glucose uptake using GLUT inhibitors. Decreased glucose availability in SLC7A11<sup>high</sup> cancer cells induce disulfide stress, leading to rapid cell death. (3) Targeting glutamine dependency in SLC7A11<sup>high</sup> cancer cells by using glutaminase inhibitors such as CB-839. Glutaminase inhibition decreases glutamate-derived anaplerosis and induces cell growth arrest in SLC7A11<sup>high</sup> cancer cells. IKE: imidazole ketone erastin, GLUT: glucose transporter.

Stockwell, 2018; Lei et al., 2020; Ye et al., 2020). However, both drugs have mechanisms of action besides inhibiting SLC7A11 and inducing ferroptosis: sorafenib is commonly used in cancer therapy as a multi-kinase inhibitor, whereas sulfasalazine is capable of blocking prostaglandin production and is commonly used for treating patients with arthritis. Therefore, it is critical to determine whether their anti-cancer effect under any given context is indeed caused by SLC7A11 inhibition and ferroptosis induction. Finally, although HG106 was recently identified as a SLC7A11 inhibitor (Hu et al., 2020), whether it can act as a FIN remains to be further examined (so far, all other SLC7A11 inhibitors can induce ferroptosis). Together, although preclinical studies have established the proof of concept to inhibit SLC7A11 in cancer therapy, there is still a significant need to further identify potent and specific SLC7A11 inhibitors, study their mechanisms of action, test them in rigorous preclinical models, and eventually apply them in clinical care.

As another approach, rather than directly inhibiting SLC7A11, various studies have tested targeting metabolic

vulnerabilities associated with SLC7A11<sup>high</sup> cancers. As discussed in the preceding section, SLC7A11<sup>high</sup> cancer cells are dependent on glutamine for glutamate-derived anaplerosis, which prompted the hypothesis that SLC7A11<sup>high</sup> cancer cells or tumors may be particularly sensitive to glutaminase inhibition. *KEAP1* is frequently mutated in lung cancer, and *KEAP1*-mutant lung cancer exhibits NRF2 hyperactivation and aberrant expression of SLC7A11 (Cancer Genome Atlas Research, 2012, 2014). Consistent with this, it was shown that glutaminase inhibitor CB-839 suppresses tumor growth of *KEAP1*-mutant cell line- or patient-derived xenografts (PDXs) much more potently than that of *KEAP1*-WT counterparts (Romero et al., 2017; Galan-Cobo et al., 2019). In the previous section, we also discussed glucose dependency of SLC7A11<sup>high</sup> cancer cells; consequently, SLC7A11<sup>high</sup> cancer cells are exquisitely sensitive to glucose starvation-induced cell death. Likewise, compared with SLC7A11<sup>low</sup> cancer cells, SLC7A11<sup>high</sup> cancer cells exhibit much more vulnerability to GLUT inhibitor-induced cell death (Liu et al., 2020). It was further demonstrated that



KL-11743, a potent GLUT1/3 dual inhibitor, selectively suppresses SLC7A11<sup>high</sup> tumor growth in both cell line xenografts and PDXs (Liu et al., 2020). These studies together suggest the possibility that SLC7A11 expression can be used as a biomarker to select cancer patients for glutaminase or GLUT inhibitor treatment.

## CONCLUSIONS AND FUTURE PERSPECTIVES

Cancer cells upregulate SLC7A11 expression through diverse mechanisms to enhance their antioxidant defense and to suppress ferroptosis (a tumor suppression mechanism), which is beneficial for tumor growth. However, emerging evidence suggests that building up cysteine-derived antioxidant defense systems also comes at an enormous cost for SLC7A11<sup>high</sup> cancer, as such efforts require a significant “investment” of cellular resources, including glutamate export for exchange of cystine import and NADPH supply to reduce cystine to cysteine in the cytosol, resulting in glucose- and glutamine-dependency in SLC7A11<sup>high</sup> cancer cells. Because glucose and glutamine are among the most abundant nutrients in the extracellular environment, under normal conditions, SLC7A11<sup>high</sup> cancer cells can take up sufficient amounts of glucose and glutamine to meet these demands for their antioxidant defense. On the basis of this, we propose that under most conditions, SLC7A11 primarily exerts a tumor promoting effect, but its overexpression does expose an Achilles’ heel in cancer cells (by rendering them to be more sensitive to glucose or glutamine starvation). We further reason that under glucose or glutamine limiting conditions, SLC7A11 may even exert a tumor-suppressive effect, a hypothesis remaining to be tested. Below we highlight a few other key questions for further understanding and targeting SLC7A11 in tumor biology in future studies.

Until relatively recently, only NRF2 and ATF4 were known to regulate *SLC7A11* transcription. In the past two years, we have witnessed a flurry of findings revealing transcriptional regulation of SLC7A11 by diverse transcription factors and epigenetic regulators (Fig. 2). As such, we now have a much deeper understanding of SLC7A11 regulation at the transcriptional level. In contrast, our knowledge of SLC7A11 regulation at the posttranslational level remains relatively rudimentary. In addition, how such posttranslational regulations in turn modulate SLC7A11-mediated downstream biological effects, such as ferroptosis and nutrient dependency, still remains largely unknown. For example, considering important roles of mTORC2 and AKT in promoting cell survival (Manning and Toker, 2017), the findings that mTORC2- or AKT-mediated phosphorylation of SLC7A11 inhibits SLC7A11’s transporter activity may seem somewhat counterintuitive (Gu et al., 2017; Lien et al., 2017). Since SLC7A11 promotes cell death under glucose starvation, it will be interesting to test whether this inhibitory phosphorylation serves to suppress SLC7A11 function in response to glucose starvation, thereby promoting cell survival under

glucose limiting conditions. Further studies are needed to further understand these intriguing questions.

Further, considering SLC7A11’s function to import cystine from and export glutamate into extracellular environment, SLC7A11 might play a role in mediating the cross-talk between tumor cells and tumor microenvironment. However, most current studies have focused on the cell autonomous function of SLC7A11 in tumor cells. We envision that future studies will elucidate potential cell non-autonomous functions of SLC7A11 in tumor biology. Likewise, whether and how SLC7A11 function in immune cells or stromal cells in turn modulates tumor cell behavior is also a potentially fascinating topic for future investigation.

The identity of the cystine reductase(s) that consume NADPH to reduce cystine to cysteine still remains elusive. Previous studies implicated that thioredoxin-related protein of 14 kDa (TRP14) and thioredoxin reductase 1 (Txnrd1) are potential cystine reductases (Mandal et al., 2010; Pader et al., 2014). Both TRP14 and Txnrd1 are indeed coupled to NADPH. However, further genetic studies are required to establish them as bona fide cystine reductases (for example, to show that inactivation of the presumed cystine reductase can dramatically increase intracellular cystine levels).

In this review, we summarized two broad strategies to target SLC7A11; one is to directly inhibit SLC7A11-mediated cystine uptake, the other is to target SLC7A11-induced glucose or glutamine dependency (Fig. 5). To move these findings to clinic application, we propose that two questions should be further addressed in future preclinical studies. The first is to identify the specific tumor or genotype context for therapeutic targeting. Based on the recent preclinical studies (Romero et al., 2017; Liu et al., 2020), it is clear that SLC7A11<sup>high</sup> tumors should be selected for GLUT or glutaminase inhibitors (to target glucose or glutamine dependency, respectively). Since *KEAP1* or *BAP1* mutant cancers exhibit high SLC7A11 expression (Cancer Genome Atlas Research, 2012, 2014; Zhang et al., 2018b), *KEAP1* or *BAP1* mutation can be used as potential biomarkers to select SLC7A11<sup>high</sup> tumors for GLUT or glutaminase inhibition. On the other hand, it remains unclear whether SLC7A11<sup>high</sup> or SLC7A11<sup>low</sup> tumors should be selected for SLC7A11 inhibitor treatment. Presumably, SLC7A11<sup>low</sup> cancer cells should be sensitive to SLC7A11 inhibition. However, it is also possible that SLC7A11<sup>high</sup> cancer cells are particularly dependent on SLC7A11, therefore rendering SLC7A11<sup>high</sup> cancer to be sensitive to SLC7A11 inhibitors too. In addition, it has been shown that tumors with certain oncogenic mutations (such as *KRAS* mutant tumors (Daher et al., 2019; Lim et al., 2019; Badgley et al., 2020; Hu et al., 2020)) are dependent on SLC7A11-mediated cystine uptake, and therefore such tumors could be particularly sensitive to SLC7A11 inhibitors. Future studies should be directed to further test these hypotheses.

The second question is to identify rational combination strategies with these inhibitors for therapeutic targeting. In this regard, recent studies uncovered that immunotherapy and

radiotherapy, two commonly used cancer therapies, can potentially induce ferroptosis in cancer cells; further preclinical analyses revealed potent therapeutic efficacy to combine immunotherapy (or radiotherapy) with SLC7A11 inhibitors (IKE, sulfasalazine, sorafenib; class 1 FINs) (Lang et al., 2019; Wang et al., 2019a; Lei et al., 2020; Ye et al., 2020). These studies provide strong justifications to combine these standard-of-care with SLC7A11 inhibitors in cancer therapy. The rational combination therapies with GLUT or glutaminase inhibitors to treat SLC7A11<sup>high</sup> cancer remain to be established.

## ACKNOWLEDGEMENTS

We apologize to the colleagues whose relevant work cannot be cited in this review due to space limitations. The research in authors' lab has been supported by The University of Texas MD Anderson Cancer Center, KC180131 from Department of Defense Kidney Cancer Research Program, R01CA181196, R01CA190370, R01CA244144 from the National Institutes of Health (to BG), CPRIT Research Training Grant (RP170067), and Dr. John J. Kopchick Research Award from The University of Texas MD Anderson Cancer Center UTHealth Graduate School of Biomedical Sciences (to PK).

## AUTHORS' CONTRIBUTIONS

BG wrote the manuscript with additional support from PK and LZ. PK generated all Fig.s.

## ABBREVIATIONS

2DG, 2-deoxyglucose; AAREs, amino acid response elements; AREs, antioxidant response elements; ALOX12, arachidonate 12-lipoxygenase;  $\alpha$ KG,  $\alpha$ -ketoglutarate; ATF4, activating transcription factor 4; CRISPR, clustered regularly interspaced short palindromic repeats; DUB, deubiquitinase; eIF2 $\alpha$ , eukaryotic initiation factor 2 $\alpha$ ; FDA, Food and Drug Administration; FIN, ferroptosis inducer; GCN2, general control non-derepressible-2; GEMMs, genetically engineered mouse models; GLUT, glucose transporter; GPX4, glutathione peroxidase 4; GSH, reduced glutathione; H2Aub, histone 2A mono-ubiquitination; H2Bub, histone 2B mono-ubiquitination; IKE, imidazole ketone erastin; KEAP1, kelch-like ECH-associated protein-1; KO, knockout; mTORC, mechanistic target of rapamycin complex; NRF2, nuclear factor erythroid 2-related factor 2; PDAC, pancreatic ductal adenocarcinomas; PPP, pentose phosphate pathway; PRC1, polycomb repressive complex 1; PR-DUB, polycomb repressive deubiquitinase; PUFA, polyunsaturated fatty acid; SLC3A2, solute carrier family 3 member 2; SLC7A11, solute carrier family 7 member 11; TCA, tricarboxylic acid; TNBC, triple-negative breast cancer; Tregs, regulatory T-cells; TRP14, thioredoxin-related protein of 14 kDa; Txnrd1, thioredoxin reductase 1; WT, wild-type.

## COMPLIANCE WITH ETHICS GUIDELINES

Pranavi Koppula, Li Zhuang, and Boyi Gan declare that they have no conflict of interest. This article does not contain any studies with human or animal subjects performed by the any of the authors.

## OPEN ACCESS

This article is licensed under a Creative Commons Attribution 4.0 International License, which permits use, sharing, adaptation, distribution and reproduction in any medium or format, as long as you give appropriate credit to the original author(s) and the source, provide a link to the Creative Commons licence, and indicate if changes were made. The images or other third party material in this article are included in the article's Creative Commons licence, unless indicated otherwise in a credit line to the material. If material is not included in the article's Creative Commons licence and your intended use is not permitted by statutory regulation or exceeds the permitted use, you will need to obtain permission directly from the copyright holder. To view a copy of this licence, visit <http://creativecommons.org/licenses/by/4.0/>.

## REFERENCES

- Anandhan A, Dodson M, Schmidlin CJ, Liu P, Zhang DD (2020) Breakdown of an ironclad defense system: the critical role of NRF2 in mediating ferroptosis. *Cell Chem Biol* 27:436–447
- Artegiani B, van Voorthuisen L, Lindeboom RG, Seinstra D, Heo I, Tapia P, Lopez-Iglesias C, Postrach D, Dayton T, Oka R et al (2019) Probing the tumor suppressor function of BAP1 in CRISPR-engineered human liver organoids. *Cell Stem Cell* 24 (927–943):e926
- Badeaux AI, Shi Y (2013) Emerging roles for chromatin as a signal integration and storage platform. *Nat Rev Mol Cell Biol* 14:211–224
- Badgley MA, Kremer DM, Maurer HC, DelGiorno KE, Lee HJ, Purohit V, Sagalovskiy IR, Ma A, Kapilian J, Firl CEM et al (2020) Cysteine depletion induces pancreatic tumor ferroptosis in mice. *Science* 368:85–89
- Bannai S (1986) Exchange of cystine and glutamate across plasma membrane of human fibroblasts. *J Biol Chem* 261:2256–2263
- Bannai S, Ishii T (1988) A novel function of glutamine in cell culture: utilization of glutamine for the uptake of cystine in human fibroblasts. *J Cell Physiol* 137:360–366
- Bannai S, Tsukeda H, Okumura H (1977) Effect of antioxidants on cultured human diploid fibroblasts exposed to cystine-free medium. *Biochem Biophys Res Commun* 74:1582–1588
- Boroughs LK, DeBerardinis RJ (2015) Metabolic pathways promoting cancer cell survival and growth. *Nat Cell Biol* 17:351–359
- Cancer Genome Atlas Research, N (2012) Comprehensive genomic characterization of squamous cell lung cancers. *Nature* 489:519–525
- Cancer Genome Atlas Research, N (2014) Comprehensive molecular profiling of lung adenocarcinoma. *Nature* 511:543–550
- Canon J, Rex K, Saiki AY, Mohr C, Cooke K, Bagal D, Gaida K, Holt T, Knutson CG, Koppada N et al (2019) The clinical KRAS(G12C) inhibitor AMG 510 drives anti-tumour immunity. *Nature* 575:217–223
- Cao JY, Poddar A, Magtanong L, Lumb JH, Mileur TR, Reid MA, Dovey CM, Wang J, Locasale JW, Stone E et al (2019) A genome-wide haploid genetic screen identifies regulators of glutathione abundance and ferroptosis sensitivity. *Cell Rep* 26 (1544–1556):e1548

- Carbone M, Yang H, Pass HI, Krausz T, Testa JR, Gaudino G (2013) BAP1 and cancer. *Nat Rev Cancer* 13:153–159
- Chen D, Fan Z, Rauh M, Buchfelder M, Eyupoglu IY, Savaskan N (2017) ATF4 promotes angiogenesis and neuronal cell death and confers ferroptosis in a xCT-dependent manner. *Oncogene* 36:5593–5608
- Chintala S, Li W, Lamoreux ML, Ito S, Wakamatsu K, Sviderskaya EV, Bennett DC, Park YM, Gahl WA, Huizing M et al (2005) Slc7a11 gene controls production of pheomelanin pigment and proliferation of cultured cells. *Proc Natl Acad Sci USA* 102:10964–10969
- Chio IIC, Tuveson DA (2017) ROS in cancer: the burning question. *Trends Mol Med* 23:411–429
- Chu B, Kon N, Chen D, Li T, Liu T, Jiang L, Song S, Tavara O, Gu W (2019) ALOX12 is required for p53-mediated tumour suppression through a distinct ferroptosis pathway. *Nat Cell Biol* 21:579–591
- Cobler L, Zhang H, Suri P, Park C, Timmerman LA (2018) xCT inhibition sensitizes tumors to gamma-radiation via glutathione reduction. *Oncotarget* 9:32280–32297
- Combs JA, DeNicola GM (2019) The non-essential amino acid cysteine becomes essential for tumor proliferation and survival. *Cancers (Basel)* 11:678
- Conrad M, Sato H (2012) The oxidative stress-inducible cystine/glutamate antiporter, system x (c) (-): cystine supplier and beyond. *Amino Acids* 42:231–246
- Cox AD, Fesik SW, Kimmelman AC, Luo J, Der CJ (2014) Drugging the undruggable RAS: mission possible? *Nat Rev Drug Discov* 13:828–851
- Daher B, Parks SK, Durivault J, Cormerais Y, Baidarjad H, Tambutte E, Pouyssegur J, Vucetic M (2019) Genetic ablation of the cystine transporter xCT in PDAC cells inhibits mTORC1, growth, survival, and tumor formation via nutrient and oxidative stresses. *Cancer Res* 79:3877–3890
- Dai L, Cao Y, Chen Y, Parsons C, Qin Z (2014) Targeting xCT, a cystine-glutamate transporter induces apoptosis and tumor regression for KSHV/HIV-associated lymphoma. *J Hematol Oncol* 7:30
- De Bundel D, Schallier A, Loyens E, Fernando R, Miyashita H, Van Liefferinge J, Vermoesen K, Bannai S, Sato H, Michotte Y et al (2011) Loss of system x(c)- does not induce oxidative stress but decreases extracellular glutamate in hippocampus and influences spatial working memory and limbic seizure susceptibility. *J Neurosci* 31:5792–5803
- Dixon SJ, Lemberg KM, Lamprecht MR, Skouta R, Zaitsev EM, Gleason CE, Patel DN, Bauer AJ, Cantley AM, Yang WS et al (2012) Ferroptosis: an iron-dependent form of nonapoptotic cell death. *Cell* 149:1060–1072
- Dixon SJ, Patel DN, Welsch M, Skouta R, Lee ED, Hayano M, Thomas AG, Gleason CE, Tatonetti NP, Slusher BS et al (2014) Pharmacological inhibition of cystine-glutamate exchange induces endoplasmic reticulum stress and ferroptosis. *Elife* 3:e02523
- Doll S, Proneth B, Tyurina YY, Panzilius E, Kobayashi S, Ingold I, Irmiler M, Beckers J, Aichler M, Walch A et al (2017) ACSL4 dictates ferroptosis sensitivity by shaping cellular lipid composition. *Nat Chem Biol* 13:91–98
- Domier E, Rabas N, Mitchell L, Novo D, Dhayade S, Marco S, Mackay G, Sumpton D, Pallares M, Nixon C et al (2017) Glutaminolysis drives membrane trafficking to promote invasiveness of breast cancer cells. *Nat Commun* 8:2255
- Drayton RM, Dudzic E, Peter S, Bertz S, Hartmann A, Bryant HE, Catto JW (2014) Reduced expression of miRNA-27a modulates cisplatin resistance in bladder cancer by targeting the cystine/glutamate exchanger SLC7A11. *Clin Cancer Res* 20:1990–2000
- Eagle H (1955a) Nutrition needs of mammalian cells in tissue culture. *Science* 122:501–514
- Eagle H (1955b) The specific amino acid requirements of a human carcinoma cell (Stain HeLa) in tissue culture. *J Exp Med* 102:37–48
- Feng H, Stockwell BR (2018) Unsolved mysteries: how does lipid peroxidation cause ferroptosis? *PLoS Biol* 16:e2006203
- Friedmann Angeli JP, Schneider M, Proneth B, Tyurina YY, Tyurin VA, Hammond VJ, Herbach N, Aichler M, Walch A, Eggenhofer E et al (2014) Inactivation of the ferroptosis regulator Gpx4 triggers acute renal failure in mice. *Nat Cell Biol* 16:1180–1191
- Galan-Cobo A, Sitthideatphaiboon P, Qu X, Poteete A, Pisegna MA, Tong P, Chen PH, Boroughs LK, Rodriguez MLM, Zhang W et al (2019) LKB1 and KEAP1/NRF2 pathways cooperatively promote metabolic reprogramming with enhanced glutamine dependence in KRAS-mutant lung adenocarcinoma. *Cancer Res* 79:3251–3267
- Gan B (2019) DUBbing ferroptosis in cancer cells. *Cancer Res* 79:1749–1750
- Gan W, Dai X, Dai X, Xie J, Yin S, Zhu J, Wang C, Liu Y, Guo J, Wang M et al (2020) LATS suppresses mTORC1 activity to directly coordinate Hippo and mTORC1 pathways in growth control. *Nat Cell Biol* 22:246–256
- Goji T, Takahara K, Negishi M, Katoh H (2017) Cystine uptake through the cystine/glutamate antiporter xCT triggers glioblastoma cell death under glucose deprivation. *J Biol Chem* 292:19721–19732
- Green DR, Evan GI (2002) A matter of life and death. *Cancer Cell* 1:19–30
- Gu Y, Albuquerque CP, Braas D, Zhang W, Villa GR, Bi J, Ikegami S, Masui K, Gini B, Yang H et al (2017) mTORC2 regulates amino acid metabolism in cancer by phosphorylation of the cystine-glutamate antiporter xCT. *Mol Cell* 67(128–138):e127
- Hanahan D, Weinberg RA (2011) Hallmarks of cancer: the next generation. *Cell* 144:646–674
- Henry KW, Wyce A, Lo WS, Duggan LJ, Emre NC, Kao CF, Pillus L, Shilatifard A, Osley MA, Berger SL (2003) Transcriptional activation via sequential histone H2B ubiquitylation and deubiquitylation, mediated by SAGA-associated Ubp8. *Genes Dev* 17:2648–2663
- Hensley CT, Wasti AT, DeBerardinis RJ (2013) Glutamine and cancer: cell biology, physiology, and clinical opportunities. *J Clin Invest* 123:3678–3684
- Hu K, Li K, Lv J, Feng J, Chen J, Wu H, Cheng F, Jiang W, Wang J, Pei H et al (2020) Suppression of the SLC7A11/glutathione axis causes synthetic lethality in KRAS-mutant lung adenocarcinoma. *J Clin Invest* 130:1752–1766
- Huang Y, Dai Z, Barbacioru C, Sadee W (2005) Cystine-glutamate transporter SLC7A11 in cancer chemosensitivity and chemoresistance. *Cancer Res* 65:7446–7454

- Igney FH, Krammer PH (2002) Death and anti-death: tumour resistance to apoptosis. *Nat Rev Cancer* 2:277–288
- Ishii T, Bannai S (1985) The synergistic action of the copper chelator bathocuproine sulphonate and cysteine in enhancing growth of L1210 cells in vitro. *J Cell Physiol* 125:151–155
- Ishimoto T, Nagano O, Yae T, Tamada M, Motohara T, Oshima H, Oshima M, Ikeda T, Asaba R, Yagi H et al (2011) CD44 variant regulates redox status in cancer cells by stabilizing the xCT subunit of system xc(-) and thereby promotes tumor growth. *Cancer Cell* 19:387–400
- Jaenisch R, Bird A (2003) Epigenetic regulation of gene expression: how the genome integrates intrinsic and environmental signals. *Nat Genet* 33(Suppl):245–254
- Jennis M, Kung CP, Basu S, Budina-Kolomets A, Leu JI, Khaku S, Scott JP, Cai KQ, Campbell MR, Porter DK et al (2016) An African-specific polymorphism in the TP53 gene impairs p53 tumor suppressor function in a mouse model. *Genes Dev* 30:918–930
- Ji X, Qian J, Rahman SMJ, Siska PJ, Zou Y, Harris BK, Hoeksema MD, Trenary IA, Heidi C, Eisenberg R et al (2018) xCT (SLC7A11)-mediated metabolic reprogramming promotes non-small cell lung cancer progression. *Oncogene* 37:5007–5019
- Jiang L, Kon N, Li T, Wang SJ, Su T, Hibshoosh H, Baer R, Gu W (2015) Ferroptosis as a p53-mediated activity during tumour suppression. *Nature* 520:57–62
- Joly JH, Delfarah A, Phung PS, Parrish S, Graham NA (2020) A synthetic lethal drug combination mimics glucose deprivation-induced cancer cell death in the presence of glucose. *J Biol Chem* 295:1350–1365
- Jones S, Wang TL, Shih le M, Mao TL, Nakayama K, Roden R, Glas R, Slamon D, Diaz LA Jr, Vogelstein B et al (2010) Frequent mutations of chromatin remodeling gene ARID1A in ovarian clear cell carcinoma. *Science* 330:228–231
- Kadoch C, Crabtree GR (2015) Mammalian SWI/SNF chromatin remodeling complexes and cancer: mechanistic insights gained from human genomics. *Sci Adv* 1:e1500447
- Kagan VE, Mao G, Qu F, Angeli JP, Doll S, Croix CS, Dar HH, Liu B, Tyurin VA, Ritov VB et al (2017) Oxidized arachidonic and adrenic PEs navigate cells to ferroptosis. *Nat Chem Biol* 13:81–90
- Kandasamy P, Gyimesi G, Kanai Y, Hediger MA (2018) Amino acid transporters revisited: new views in health and disease. *Trends Biochem Sci* 43:752–789
- Kilberg MS, Shan J, Su N (2009) ATF4-dependent transcription mediates signaling of amino acid limitation. *Trends Endocrinol Metab* 20:436–443
- Kim J, Guan KL (2019) mTOR as a central hub of nutrient signalling and cell growth. *Nat Cell Biol* 21:63–71
- Koppula P, Zhang Y, Shi J, Li W, Gan B (2017) The glutamate/cystine antiporter SLC7A11/xCT enhances cancer cell dependency on glucose by exporting glutamate. *J Biol Chem* 292:14240–14249
- Koppula P, Zhang Y, Zhuang L, Gan B (2018) Amino acid transporter SLC7A11/xCT at the crossroads of regulating redox homeostasis and nutrient dependency of cancer. *Cancer Commun (Lond)* 38:12
- Lang X, Green MD, Wang W, Yu J, Choi JE, Jiang L, Liao P, Zhou J, Zhang Q, Dow A et al (2019) Radiotherapy and immunotherapy promote tumoral lipid oxidation and ferroptosis via synergistic repression of SLC7A11. *Cancer Discov* 9:1673
- Lei G, Zhang Y, Koppula P, Liu X, Zhang J, Lin SH, Ajani JA, Xiao Q, Liao Z, Wang H et al (2020) The role of ferroptosis in ionizing radiation-induced cell death and tumor suppression. *Cell Res* 30:146–162
- Li T, Kon N, Jiang L, Tan M, Ludwig T, Zhao Y, Baer R, Gu W (2012) Tumor suppression in the absence of p53-mediated cell-cycle arrest, apoptosis, and senescence. *Cell* 149:1269–1283
- Lien EC, Ghisolfi L, Geck RC, Asara JM, Toker A (2017) Oncogenic PI3K promotes methionine dependency in breast cancer cells through the cystine-glutamate antiporter xCT. *Sci Signal* 10:eaa06604
- Lim JKM, Delaidelli A, Minaker SW, Zhang HF, Colovic M, Yang H, Negri GL, von Karstedt S, Lockwood WW, Schaffer P et al (2019) Cystine/glutamate antiporter xCT (SLC7A11) facilitates oncogenic RAS transformation by preserving intracellular redox balance. *Proc Natl Acad Sci USA* 116:9433–9442
- Liu XX, Li XJ, Zhang B, Liang YJ, Zhou CX, Cao DX, He M, Chen GQ, He JR, Zhao Q (2011) MicroRNA-26b is underexpressed in human breast cancer and induces cell apoptosis by targeting SLC7A11. *FEBS Lett* 585:1363–1367
- Liu DS, Duong CP, Haupt S, Montgomery KG, House CM, Azar WJ, Pearson HB, Fisher OM, Read M, Guerra GR et al (2017) Inhibiting the system xc(-)/glutathione axis selectively targets cancers with mutant-p53 accumulation. *Nat Commun* 8:14844
- Liu T, Jiang L, Tavana O, Gu W (2019) The Deubiquitylase OTUB1 mediates ferroptosis via stabilization of SLC7A11. *Cancer Res* 79:1913–1924
- Liu X, Olszewski K, Zhang Y, Lim EW, Shi J, Zhang X, Zhang J, Lee H, Koppula P, Lei G et al (2020) Cystine transporter regulation of pentose phosphate pathway dependency and disulfide stress exposes a targetable metabolic vulnerability in cancer. *Nat Cell Biol* 22:476–486
- Lo M, Ling V, Wang YZ, Gout PW (2008) The xc- cystine/glutamate antiporter: a mediator of pancreatic cancer growth with a role in drug resistance. *Br J Cancer* 99:464–472
- Long Y, Tao H, Karachi A, Grippin AJ, Jin L, Chang YE, Zhang W, Dyson KA, Hou AY, Na M et al (2020) Dysregulation of glutamate transport enhances treg function that promotes VEGF blockade resistance in glioblastoma. *Cancer Res* 80:499–509
- Mandal PK, Seiler A, Perisic T, Kolle P, Banjac Canak A, Forster H, Weiss N, Kremmer E, Lieberman MW, Bannai S et al (2010) System x(c)- and thioredoxin reductase 1 cooperatively rescue glutathione deficiency. *J Biol Chem* 285:22244–22253
- Manning BD, Toker A (2017) AKT/PKB signaling: navigating the network. *Cell* 169:381–405
- Mao TL, Shih le M (2013) The roles of ARID1A in gynecologic cancer. *J Gynecol Oncol* 24:376–381
- Martin L, Gardner LB (2015) Stress-induced inhibition of nonsense-mediated RNA decay regulates intracellular cystine transport and intracellular glutathione through regulation of the cystine/glutamate exchanger SLC7A11. *Oncogene* 34:4211–4218
- Muir A, Danai LV, Gui DY, Waingarten CY, Lewis CA, Vander Heiden MG (2017) Environmental cystine drives glutamine anaplerosis and sensitizes cancer cells to glutaminase inhibition. *Elife* 6:e27713

- Muller PA, Vousden KH (2013) p53 mutations in cancer. *Nat Cell Biol* 15:2–8
- Nagane M, Kanai E, Shibata Y, Shimizu T, Yoshioka C, Maruo T, Yamashita T (2018) Sulfasalazine, an inhibitor of the cystine-glutamate antiporter, reduces DNA damage repair and enhances radiosensitivity in murine B16F10 melanoma. *PLoS ONE* 13: e0195151
- Nakamura E, Sato M, Yang H, Miyagawa F, Harasaki M, Tomita K, Matsuoka S, Noma A, Iwai K, Minato N (1999) 4F2 (CD98) heavy chain is associated covalently with an amino acid transporter and controls intracellular trafficking and membrane topology of 4F2 heterodimer. *J Biol Chem* 274:3009–3016
- Ogiwara H, Takahashi K, Sasaki M, Kuroda T, Yoshida H, Watanabe R, Maruyama A, Makinoshima H, Chiwaki F, Sasaki H et al (2019) Targeting the vulnerability of glutathione metabolism in ARID1A-deficient cancers. *Cancer Cell* 35(177–190):e178
- Okuno S, Sato H, Kuriyama-Matsumura K, Tamba M, Wang H, Sohda S, Hamada H, Yoshikawa H, Kondo T, Bannai S (2003) Role of cystine transport in intracellular glutathione level and cisplatin resistance in human ovarian cancer cell lines. *Br J Cancer* 88:951–956
- Pader I, Sengupta R, Cebula M, Xu J, Lundberg JO, Holmgren A, Johansson K, Arner ES (2014) Thioredoxin-related protein of 14 kDa is an efficient L-cystine reductase and S-nitrosylase. *Proc Natl Acad Sci USA* 111:6964–6969
- Pakos-Zebrucka K, Koryga I, Mnich K, Ljujic M, Samali A, Gorman AM (2016) The integrated stress response. *EMBO Rep* 17:1374–1395
- Pavlova NN, Thompson CB (2016) The emerging hallmarks of cancer metabolism. *Cell Metab* 23:27–47
- Prior IA, Lewis PD, Mattos C (2012) A comprehensive survey of Ras mutations in cancer. *Cancer Res* 72:2457–2467
- Qiao HX, Hao CJ, Li Y, He X, Chen RS, Cui J, Xu ZH, Li W (2008) JNK activation mediates the apoptosis of xCT-deficient cells. *Biochem Biophys Res Commun* 370:584–588
- Rojo de la Vega M, Chapman E, Zhang DD (2018) NRF2 and the hallmarks of cancer. *Cancer Cell* 34:21–43
- Romero R, Sayin VI, Davidson SM, Bauer MR, Singh SX, LeBoeuf SE, Karakousi TR, Ellis DC, Bhutkar A, Sanchez-Rivera FJ et al (2017) Keap1 loss promotes Kras-driven lung cancer and results in dependence on glutaminolysis. *Nat Med* 23:1362–1368
- Sato H, Tamba M, Ishii T, Bannai S (1999) Cloning and expression of a plasma membrane cystine/glutamate exchange transporter composed of two distinct proteins. *J Biol Chem* 274:11455–11458
- Sato H, Nomura S, Maehara K, Sato K, Tamba M, Bannai S (2004) Transcriptional control of cystine/glutamate transporter gene by amino acid deprivation. *Biochem Biophys Res Commun* 325:109–116
- Sato H, Shiiya A, Kimata M, Maehara K, Tamba M, Sakakura Y, Makino N, Sugiyama F, Yagami K, Moriguchi T et al (2005) Redox imbalance in cystine/glutamate transporter-deficient mice. *J Biol Chem* 280:37423–37429
- Sayin VI, LeBoeuf SE, Singh SX, Davidson SM, Biancur D, Guzelhan BS, Alvarez SW, Wu WL, Karakousi TR, Zavitsanos AM et al (2017) Activation of the NRF2 antioxidant program generates an imbalance in central carbon metabolism in cancer. *Elife* 6:e28083
- Scheuermann JC, de Ayala Alonso AG, Oktaba K, Ly-Hartig N, McGinty RK, Fraterman S, Wilm M, Muir TW, Muller J (2010) Histone H2A deubiquitinase activity of the Polycomb repressive complex PR-DUB. *Nature* 465:243–247
- Shi J, Vakoc CR (2014) The mechanisms behind the therapeutic activity of BET bromodomain inhibition. *Mol Cell* 54:728–736
- Shin CS, Mishra P, Watrous JD, Carelli V, D'Aurelio M, Jain M, Chan DC (2017) The glutamate/cystine xCT antiporter antagonizes glutamine metabolism and reduces nutrient flexibility. *Nat Commun* 8:15074
- Shin SS, Jeong BS, Wall BA, Li J, Shan NL, Wen Y, Goydos JS, Chen S (2018) Participation of xCT in melanoma cell proliferation in vitro and tumorigenesis in vivo. *Oncogenesis* 7:86
- Stewart MD, Li J, Wong J (2005) Relationship between histone H3 lysine 9 methylation, transcription repression, and heterochromatin protein 1 recruitment. *Mol Cell Biol* 25:2525–2538
- Stipanuk MH (2004) Sulfur amino acid metabolism: pathways for production and removal of homocysteine and cysteine. *Annu Rev Nutr* 24:539–577
- Stipanuk MH, Dominy JE Jr, Lee JI, Coloso RM (2006) Mammalian cysteine metabolism: new insights into regulation of cysteine metabolism. *J Nutr* 136:1652S–1659S
- Stockwell BR, Jiang X (2020) The chemistry and biology of ferroptosis. *Cell Chem Biol* 27:365–375
- Stockwell BR, Friedmann Angeli JP, Bayir H, Bush AI, Conrad M, Dixon SJ, Fulda S, Gascon S, Hatzios SK, Kagan VE et al (2017) Ferroptosis: a regulated cell death nexus linking metabolism, redox biology, and disease. *Cell* 171:273–285
- Sui S, Zhang J, Xu S, Wang Q, Wang P, Pang D (2019) Ferritinophagy is required for the induction of ferroptosis by the bromodomain protein BRD4 inhibitor (+)-JQ1 in cancer cells. *Cell Death Dis* 10:331
- Timmerman LA, Holton T, Yuneva M, Louie RJ, Padro M, Daemen A, Hu M, Chan DA, Ethier SP, van 't Veer LJ et al (2013) Glutamine sensitivity analysis identifies the xCT antiporter as a common triple-negative breast tumor therapeutic target. *Cancer Cell* 24:450–465
- Trachootham D, Alexandre J, Huang P (2009) Targeting cancer cells by ROS-mediated mechanisms: a radical therapeutic approach? *Nat Rev Drug Discov* 8:579–591
- Tsuchihashi K, Okazaki S, Ohmura M, Ishikawa M, Sampetean O, Onishi N, Wakimoto H, Yoshikawa M, Seishima R, Iwasaki Y et al (2016) The EGF receptor promotes the malignant potential of glioma by regulating amino acid transport system xc(-). *Cancer Res* 76:2954–2963
- Vander Heiden MG, Cantley LC, Thompson CB (2009) Understanding the Warburg effect: the metabolic requirements of cell proliferation. *Science* 324:1029–1033
- Vousden KH, Prives C (2009) Blinded by the light: the growing complexity of p53. *Cell* 137:413–431
- Wang H, Wang L, Erdjument-Bromage H, Vidal M, Tempst P, Jones RS, Zhang Y (2004) Role of histone H2A ubiquitination in Polycomb silencing. *Nature* 431:873–878
- Wang SJ, Li D, Ou Y, Jiang L, Chen Y, Zhao Y, Gu W (2016) Acetylation is crucial for p53-mediated ferroptosis and tumor suppression. *Cell Rep* 17:366–373

- Wang L, Leite de Oliveira R, Huijberts S, Bosdriesz E, Pencheva N, Brunen D, Bosma A, Song JY, Zevenhoven J, Los-de Vries GT et al (2018) An acquired vulnerability of drug-resistant melanoma with therapeutic potential. *Cell* 173(1413–1425):e1414
- Wang W, Green M, Choi JE, Gijon M, Kennedy PD, Johnson JK, Liao P, Lang X, Kryczek I, Sell A et al (2019a) CD8(+) T cells regulate tumour ferroptosis during cancer immunotherapy. *Nature* 569:270–274
- Wang Y, Yang L, Zhang X, Cui W, Liu Y, Sun QR, He Q, Zhao S, Zhang GA, Wang Y et al (2019b) Epigenetic regulation of ferroptosis by H2B monoubiquitination and p53. *EMBO Rep* 20:e47563
- Wang L, Liu Y, Du T, Yang H, Lei L, Guo M, Ding HF, Zhang J, Wang H, Chen X et al (2020a) ATF3 promotes erastin-induced ferroptosis by suppressing system Xc(). *Cell Death Differ* 27:662–675
- Wang Y, Zhao Y, Wang H, Zhang C, Wang M, Yang Y, Xu X, Hu Z (2020b) Histone demethylase KDM3B protects against ferroptosis by upregulating SLC7A11. *FEBS Open Biol* 10:637–643
- Wu Y, Sun X, Song B, Qiu X, Zhao J (2017) MiR-375/SLC7A11 axis regulates oral squamous cell carcinoma proliferation and invasion. *Cancer Med* 6:1686–1697
- Xie L, Song X, Yu J, Guo W, Wei L, Liu Y, Wang X (2011) Solute carrier protein family may involve in radiation-induced radioresistance of non-small cell lung cancer. *J Cancer Res Clin Oncol* 137:1739–1747
- Yae T, Tsuchihashi K, Ishimoto T, Motohara T, Yoshikawa M, Yoshida GJ, Wada T, Masuko T, Mogushi K, Tanaka H et al (2012) Alternative splicing of CD44 mRNA by ESRP1 enhances lung colonization of metastatic cancer cell. *Nat Commun* 3:883
- Yamaguchi I, Yoshimura SH, Katoh H (2020) High cell density increases glioblastoma cell viability under glucose deprivation via degradation of the cystine/glutamate transporter xCT (SLC7A11). *J Biol Chem* 295:6936–6945
- Yang Y, Yee D (2014) IGF-I regulates redox status in breast cancer cells by activating the amino acid transport molecule xC. *Cancer Res* 74:2295–2305
- Yang WS, SriRamaratnam R, Welsch ME, Shimada K, Skouta R, Viswanathan VS, Cheah JH, Clemons PA, Shamji AF, Clish CB et al (2014) Regulation of ferroptotic cancer cell death by GPX4. *Cell* 156:317–331
- Yant LJ, Ran Q, Rao L, Van Remmen H, Shibatani T, Belter JG, Motta L, Richardson A, Prolla TA (2003) The selenoprotein GPX4 is essential for mouse development and protects from radiation and oxidative damage insults. *Free Radic Biol Med* 34:496–502
- Ye P, Mimura J, Okada T, Sato H, Liu T, Maruyama A, Ohyama C, Itoh K (2014) Nrf2- and ATF4-dependent upregulation of xCT modulates the sensitivity of T24 bladder carcinoma cells to proteasome inhibition. *Mol Cell Biol* 34:3421–3434
- Ye LF, Chaudhary KR, Zandkarimi F, Harken AD, Kinslow CJ, Upadhyayula PS, Dovas A, Higgins DM, Tan H, Zhang Y et al (2020) Radiation-induced lipid peroxidation triggers ferroptosis and synergizes with ferroptosis inducers. *ACS Chem Biol* 15:469–484
- Yoshikawa M, Tsuchihashi K, Ishimoto T, Yae T, Motohara T, Sugihara E, Onishi N, Masuko T, Yoshizawa K, Kawashiri S et al (2013) xCT inhibition depletes CD44v-expressing tumor cells that are resistant to EGFR-targeted therapy in head and neck squamous cell carcinoma. *Cancer Res* 73:1855–1866
- Zhang W, Trachootham D, Liu J, Chen G, Pelicano H, Garcia-Prieto C, Lu W, Burger JA, Croce CM, Plunkett W et al (2012) Stromal control of cystine metabolism promotes cancer cell survival in chronic lymphocytic leukaemia. *Nat Cell Biol* 14:276–286
- Zhang L, Huang Y, Ling J, Zhuo W, Yu Z, Luo Y, Zhu Y (2018a) Overexpression of SLC7A11: a novel oncogene and an indicator of unfavorable prognosis for liver carcinoma. *Fut Oncol* 14:927–936
- Zhang Y, Shi J, Liu X, Feng L, Gong Z, Koppula P, Sirohi K, Li X, Wei Y, Lee H et al (2018b) BAP1 links metabolic regulation of ferroptosis to tumour suppression. *Nat Cell Biol* 20:1181–1192
- Zhang Y, Koppula P, Gan B (2019a) Regulation of H2A ubiquitination and SLC7A11 expression by BAP1 and PRC1. *Cell Cycle* 18:773–783
- Zhang Y, Tan H, Daniels JD, Zandkarimi F, Liu H, Brown LM, Uchida K, O'Connor OA, Stockwell BR (2019b) Imidazole ketone erastin induces ferroptosis and slows tumor growth in a mouse lymphoma model. *Cell Chem Biol* 226:623
- Zhang Y, Zhuang L, Gan B (2019c) BAP1 suppresses tumor development by inducing ferroptosis upon SLC7A11 repression. *Mol Cell Oncol* 6:1536845