

SCIENTIFIC REPORTS



OPEN

Genetic polymorphism and phylogenetic differentiation of the Huaxia Platinum System in three Chinese minority ethnicities

Jing Liu, Zheng Wang, Guanglin He, Mengge Wang & Yiping Hou

Short tandem repeats (STRs) with features of high polymorphism and abundant evolution information play a significant role in genetic applications such as human forensics, anthropology and population genetics. The Huaxia Platinum System was specifically exploited to allow coamplification of all markers in the expanded Combined DNA Index System and the Chinese National Database. Herein, in continuation of our previous studies, 493 unrelated individuals were firstly genotyped to investigate the efficacy of this novel system in three minority ethnicities of China (Hui, Tibetan and Uygur). Additionally, genetic relationships among our three investigated populations and other previously published populations were analyzed using pairwise genetic distances, multidimensional scaling (MDS), principal component analysis (PCA), cladogram and STRUCTURE. The combined match probabilities (CMP) for the Hui, Tibetan and Uygur groups were 1.6894×10^{-27} , 6.1666×10^{-27} and 5.0655×10^{-27} , respectively, and the combined powers of exclusion (CPE) were 0.99999999646627, 0.99999999304935 and 0.99999999433994. Population comparison analysis manifested that the Hui and Tibetan populations had genetic affinities with the Han, Yi and Korean populations, while the Uygur group had a close relationship with the Kazakh population. The aforementioned results suggested that the Huaxia Platinum System is a polymorphic and effective tool that is appropriate for personal identification and population genetics.

Short tandem repeats (STRs), also known as microsatellites, are DNA regions scattered throughout the genome with tandemly repeated short sequence motifs varying from 2–6 bases, and they have been the most commonly used genetic marker for human forensics^{1,2}. In 1998, the Federal Bureau of Investigation (FBI) Laboratory selected 13 STR loci to constitute the Combined DNA Index System (CODIS), which has recently blossomed into the expanded CODIS containing an additional 7 STRs to increase the power of discrimination (PD)^{3,4}. There are several commercial STR kits, such as the GlobalFiler PCR Amplification Kit (Thermo Fisher Scientific, USA)⁵ and PowerPlex Fusion Systems (Promega, USA)⁶, that contain 20 expanded CODIS loci (Supplementary Table S1) and have been developed and validated to promote data sharing. For the Chinese National Database (CND), the biggest DNA database in the worldwide, 20 STRs are required for uploading DNA profiles^{7,8}. A total of 23 unique STRs exist between the expanded CODIS and the CND⁹. Recently, the Huaxia Platinum System (Thermo Fisher Scientific, USA) was specially developed to allow multiplex amplification and fluorescent detection of the 23 unique STRs as well as Amelogenin and Y-InDel (rs2032678) for sex determination. In light of our previous validation study, this assay was proven to be a highly polymorphic, informative, reliable and efficient tool for forensic investigation⁹.

China has 56 officially recognized ethnic groups and is the most populous country in the world. It is highly diverse, and its substructure is extremely complicated. The Hui, Tibetan and Uygur minority ethnicities are the most representative populations of West China. Among them, the Hui group is the largest and most widespread minority in the country, and most of them live in the Ningxia Hui Autonomous Region, Xinjiang Uygur Autonomous Region, and Qinghai and Gansu provinces. Their language belongs to Sinitic. The demographic history and previous population genetic studies indicated that the Hui minority originates from West and Central

Institute of Forensic Medicine, West China School of Basic Medical Sciences & Forensic Medicine, Sichuan University, Chengdu, 610041, China. Jing Liu and Zheng Wang contributed equally. Correspondence and requests for materials should be addressed to Y.H. (email: profhou@yahoo.com)

Locus	MP			PE			PIC			TPI			Ho			He			HWE-p		
	Hui	Tibetan	Uygur	Hui	Tibetan	Uygur	Hui	Tibetan	Uygur	Hui	Tibetan	Uygur	Hui	Tibetan	Uygur	Hui	Tibetan	Uygur	Hui	Tibetan	Uygur
CSF1PO	0.1244	0.1494	0.1570	0.4620	0.4680	0.5020	0.6770	0.6412	0.6420	1.7941	1.8182	1.9643	0.7213	0.7250	0.7455	0.7260	0.6897	0.7042	0.8859	0.2639	0.3430
D10S1248	0.1116	0.1108	0.0841	0.6154	0.5098	0.5494	0.7229	0.7072	0.7416	2.6143	2.0000	2.2000	0.8087	0.7550	0.7727	0.7637	0.7468	0.7759	0.1516	0.9060	0.9359
D12S391	0.0490	0.0706	0.0483	0.6676	0.5806	0.7219	0.8173	0.7772	0.8271	3.0500	2.3810	3.6667	0.8361	0.7950	0.8636	0.8396	0.8064	0.8490	0.8973	0.5952	0.6678
D13S317	0.0780	0.0636	0.0565	0.6154	0.6753	0.5990	0.7642	0.7914	0.8019	2.6143	3.1250	2.5000	0.8087	0.8400	0.8000	0.7964	0.8192	0.8277	0.6793	0.4389	0.4419
D16S539	0.0914	0.0802	0.0871	0.4620	0.5184	0.5334	0.7231	0.7506	0.7407	1.7941	2.0408	2.1154	0.7213	0.7600	0.7636	0.7630	0.7832	0.7780	0.1849	0.3205	0.7162
D18S51	0.0390	0.0483	0.0483	0.6782	0.6462	0.6682	0.8427	0.8193	0.8226	3.1552	2.8571	3.0556	0.8415	0.8250	0.8364	0.8604	0.8375	0.8457	0.4616	0.5953	0.7872
D19S433	0.0520	0.0585	0.0623	0.6570	0.6177	0.7219	0.8038	0.7974	0.7974	2.9516	2.6316	3.6667	0.8306	0.8050	0.8636	0.8279	0.8240	0.8229	0.9214	0.6322	0.2632
D1S1656	0.0544	0.0455	0.0498	0.6051	0.7047	0.7038	0.8017	0.8297	0.8203	2.5417	3.4483	3.4375	0.8033	0.8500	0.8546	0.8244	0.8489	0.8413	0.4533	0.8281	0.7039
D21S11	0.0633	0.0565	0.0770	0.6465	0.6177	0.5990	0.7992	0.7935	0.7749	2.8594	2.6316	2.5000	0.8251	0.8150	0.8000	0.8226	0.8189	0.8027	0.9286	0.7627	0.9424
D22S1045	0.0977	0.0888	0.1023	0.5074	0.4054	0.5176	0.7230	0.7285	0.7220	1.9891	1.5873	2.0370	0.7486	0.6850	0.7546	0.7663	0.7698	0.7641	0.5733	0.0047	0.8144
D2S1338	0.0361	0.0503	0.0435	0.7543	0.6559	0.7038	0.8502	0.8182	0.8465	4.1591	2.9412	3.4375	0.8798	0.8250	0.8546	0.8672	0.8393	0.8659	0.6162	0.6971	0.7273
D2S441	0.0944	0.0983	0.1012	0.5650	0.5098	0.4143	0.7348	0.7226	0.6962	2.2875	2.0000	1.6176	0.7814	0.7500	0.6909	0.7720	0.7641	0.7364	0.7614	0.6740	0.2788
D3S1358	0.1076	0.1371	0.1256	0.4890	0.4130	0.5494	0.7026	0.6556	0.6944	1.9063	1.6129	2.2000	0.7377	0.6900	0.7727	0.7475	0.7111	0.7442	0.7605	0.4907	0.4930
D5S818	0.0872	0.0968	0.1093	0.6465	0.3762	0.5334	0.7528	0.7115	0.7147	2.8594	1.4925	2.1154	0.8251	0.6600	0.7636	0.7880	0.7529	0.7587	0.2189	0.0044	0.9036
D6S1043	0.0344	0.0268	0.0398	0.7765	0.7246	0.5823	0.8553	0.8741	0.8432	4.5750	3.7037	2.3913	0.8907	0.8650	0.7909	0.8716	0.8867	0.8624	0.4385	0.3238	0.0295
D7S820	0.0957	0.0853	0.0688	0.5263	0.5358	0.4283	0.7305	0.7362	0.7753	2.0795	2.1277	1.6667	0.7596	0.7650	0.7000	0.7678	0.7711	0.8075	0.7908	0.8107	0.0042
D8S1179	0.0579	0.0595	0.0729	0.6360	0.7047	0.6682	0.8014	0.8007	0.7825	2.7727	3.4483	3.0556	0.8197	0.8550	0.8364	0.8264	0.8270	0.8109	0.8098	0.2870	0.4955
FGA	0.0408	0.0360	0.0393	0.6257	0.7346	0.7401	0.8388	0.8487	0.8495	2.6912	3.8462	3.9286	0.8142	0.8700	0.8727	0.8575	0.8653	0.8673	0.0936	0.8449	0.8665
Penta D	0.0578	0.0814	0.0777	0.5849	0.6367	0.6682	0.7972	0.7628	0.7669	2.4079	2.7778	3.0556	0.7924	0.8250	0.8364	0.8217	0.7947	0.7954	0.2995	0.3472	0.2863
Penta E	0.0160	0.0165	0.0240	0.8100	0.8982	0.7038	0.9171	0.9182	0.8985	5.3824	10.0000	3.4375	0.9071	0.9500	0.8546	0.9250	0.9263	0.9101	0.3582	0.1895	0.0419
TH01	0.1560	0.2105	0.1137	0.3335	0.3093	0.5176	0.6250	0.5606	0.7012	1.3657	1.2987	2.0370	0.6339	0.6200	0.7546	0.6661	0.6198	0.7432	0.3559	0.9186	0.7856
TPOX	0.1929	0.2449	0.1909	0.4190	0.2403	0.4283	0.5866	0.5100	0.5948	1.6339	1.1236	1.6667	0.6940	0.5550	0.7000	0.6475	0.5746	0.6585	0.1879	0.5753	0.3581
vWA	0.0735	0.0728	0.0714	0.6154	0.6272	0.5494	0.7692	0.7717	0.7679	2.6143	2.7027	2.2000	0.8087	0.8100	0.7727	0.8017	0.8036	0.7975	0.8121	0.6896	0.5185

Table 1. Forensic parameters of 23 autosomal STR loci included in the Huaxia Platinum system in three Chinese populations ($n_{\text{Hui}} = 183$, $n_{\text{Tibetan}} = 200$, $n_{\text{Uygur}} = 110$, after Bonferroni correction $p > 0.0022$). MP: matching probability; PE: power of exclusion; PIC: polymorphism information content; TPI: typical paternity index; Ho: observed heterozygosity; He: expected heterozygosity; HWE-p: the p value of the Hardy-Weinberg equilibrium test.

Asian-migrating Muslim groups and has a substantial admixture of the Han, Uygur and Mongolian groups^{10,11}. The Tibetan population is one of the oldest ethnic groups in China, and their ancestor is the Diqiang, who are mainly distributed in the Tibet Autonomous Region, Qinghai and Western Sichuan. Tibetan belongs to the sub-branch of the Tibeto-Burman of the Sino-Tibetan language, which is classified into Sinitic and Tibeto-Burman¹². A previous study suggested that there are relatively small genetic diversities among Sino-Tibetan populations¹³. The Uygur minority is the fifth largest ethnic group in China and chiefly inhabits the Xinjiang Uygur Autonomous Region of Northwest China. Their language pertains to the Turkic subbranch of the Altaic language family. The evidence from a physical anthropology study showed that the Uygur people have an admixture between Europeans and East Asians, which makes it a research hotspot¹⁴.

In a continuation of our previous studies^{9,15,16}, herein, we characterized the genetic diversity of the Huaxia Platinum System in the three aforementioned minority ethnicities (183 Ningxia Wuzhong Hui, 200 Sichuan Chengdu Tibetan and 110 Xinjiang Kumul Uygur individuals). Then, we evaluated population comparisons between the three studied populations and previously published populations based on 20 expanded CODIS loci. Furthermore, we conducted genetic structure analysis based on the genotype data of 23 STRs included in the Huaxia Platinum System from 11 populations. The details of relevant populations and their abbreviations are displayed in Supplementary Table S2.

Results

Forensic parameters of the Huaxia Platinum System. This study was implemented to obtain batches of genotype data (Supplementary Tables S3) from 23 STRs from the three populations (Ningxia Wuzhong Hui, Sichuan Chengdu Tibetan and Xinjiang Kumul Uygur). No significant deviation from Hardy-Weinberg equilibrium (HWE) was detected after Bonferroni correction was performed ($p > 0.05/23 \approx 0.0022$), and no significant departure from linkage disequilibrium (LD) in the locus-by-locus pairwise comparison test was observed after Bonferroni correction was performed ($p > 0.05/253 \approx 0.0002$) at any STR loci or in any ethnic group (Table 1 and Supplementary Tables S4–S6).

The allele frequencies of 23 autosomal STR loci for the three populations are given in Supplementary Tables S7–S9. The forensic informative metrics include the match probability (MP), power of exclusion (PE), polymorphism information content (PIC), typical paternity index (TPI), observed heterozygosity (Ho) and expected heterozygosity (He), which are listed in Table 1. The Ho ranged from 0.5550 (TPOX) to 0.9500 (Penta E) in the Sichuan Chengdu Tibetan (SCT) population, with an average value of 0.7780, which was lower than the average values of the Xinjiang Kumul Uygur (XKU, 0.7937) and Ningxia Wuzhong Hui (NWH, 0.7952) ethnic groups. In the three populations, Penta E had the highest discrimination power and the MP values were 0.0160 (NWH),

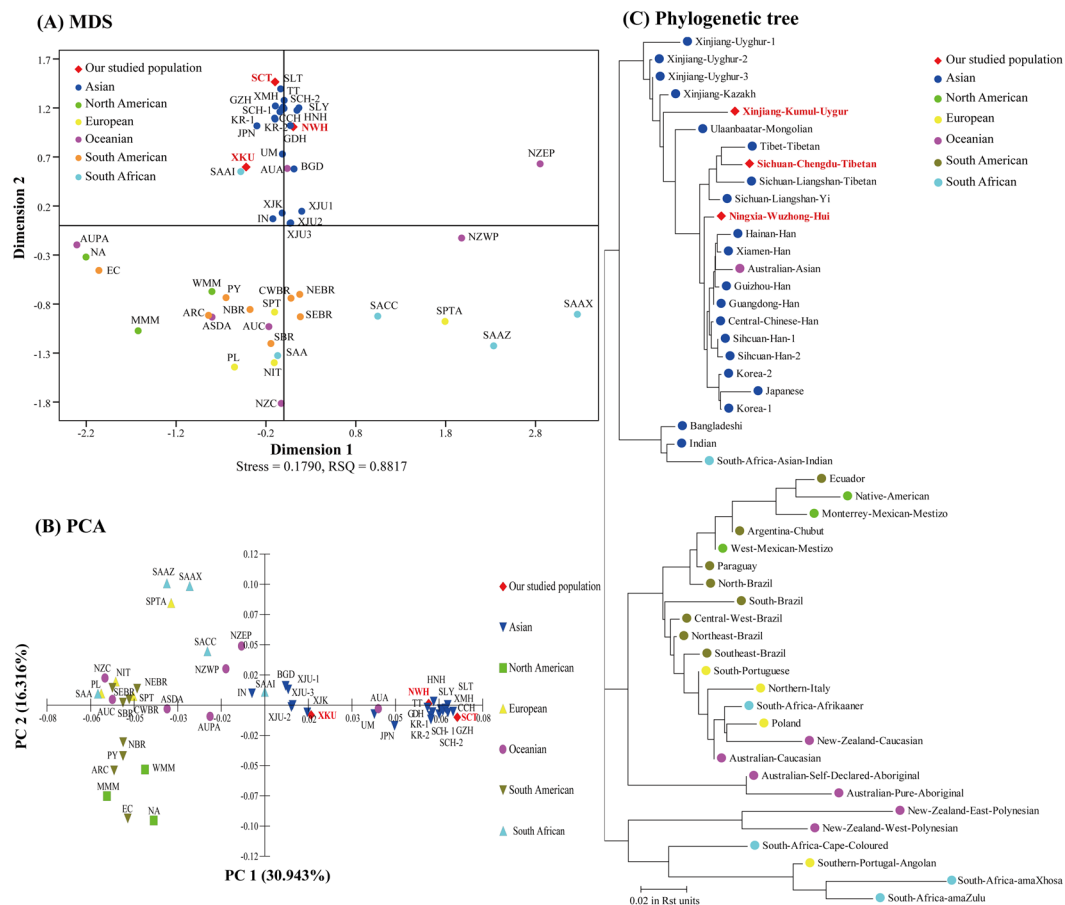


Figure 1. Population comparison analysis between our three studied populations and 47 previously published worldwide populations. **(A)** An MDS plot based on the genetic distance (R_{st}) of 20 expanded CODIS loci was drawn. All populations are marked by their abbreviations. **(B)** The PCA plot was performed based on the allele frequencies of 20 expanded CODIS loci. All populations are marked by their abbreviations. **(C)** The phylogenetic tree was constructed based on R_{st} values with the neighbor-joining method. The population abbreviations are listed in Supplementary Table S2.

0.0165 (SCT) and 0.0240 (XKU). TPOX had the lowest discrimination power and the MP values were 0.1929 (NWH), 0.2449 (SCT) and 0.1909 (XKU). The combined match probabilities (CMP) for the NWH, SCT and XKU groups were 1.6894×10^{-27} , 6.1666×10^{-27} and 5.0655×10^{-27} , respectively, and the combined powers of exclusion (CPE) were 0.999999999646627, 0.999999999304935 and 0.999999999433994.

Interpopulation genetic distances. We performed locus-by-locus pairwise comparisons (F_{st}) and calculated Nei's standard genetic distances (R_{st}) between our three studied populations and 47 previously published worldwide populations (Asian^{9,15–29}, North American^{30–32}, European^{33–36}, Oceanian³⁷, South American^{38–41} and South African⁴² populations) based on allele frequencies of 20 expanded CODIS loci to infer interpopulation similarity and differentiation (Supplementary Tables S10–S13 and Fig. S1). The locus-by-locus F_{st} and corresponding p values showed no significant genetic difference between the NWH group and Han, Tibetan, Yi and Korean populations at all loci; no significant genetic difference between the SCT population and Yi and Tibetan ethnic groups at all loci; and no significant genetic difference between the XKU ethnic group and the Xinjiang Uygur-3 and Kazakh populations at all loci. However, for the NWH group, significant genetic differences were observed with 37 reference populations, ranging from 1 to 17 loci. For the SCT group, significant genetic differences were observed with 46 reference populations, varying from 1 to 19 loci, and for the XKU group, significant genetic differences were observed with 47 reference populations, spanning 1 to 15 loci. Subsequently, all three investigated populations showed the largest R_{st} with the South Africa amaXhosa population, for which the R_{st} values were 0.1913 (NWH), 0.2240 (SCT) and 0.2140 (XKU). The smallest R_{st} values were 0.0072 (between the NWH and Central Chinese Han populations), 0.0181 (between the SCT and Sichuan Liangshan Yi populations) and 0.0324 (between the XKU and Xinjiang Uygur-3 populations). The NWH and SCT populations had a relatively small R_{st} with the Han, Yi, Tibetan and Korean populations, and the XKU ethnic group had a relatively small R_{st} with the other three Uygur and Kazakh populations.

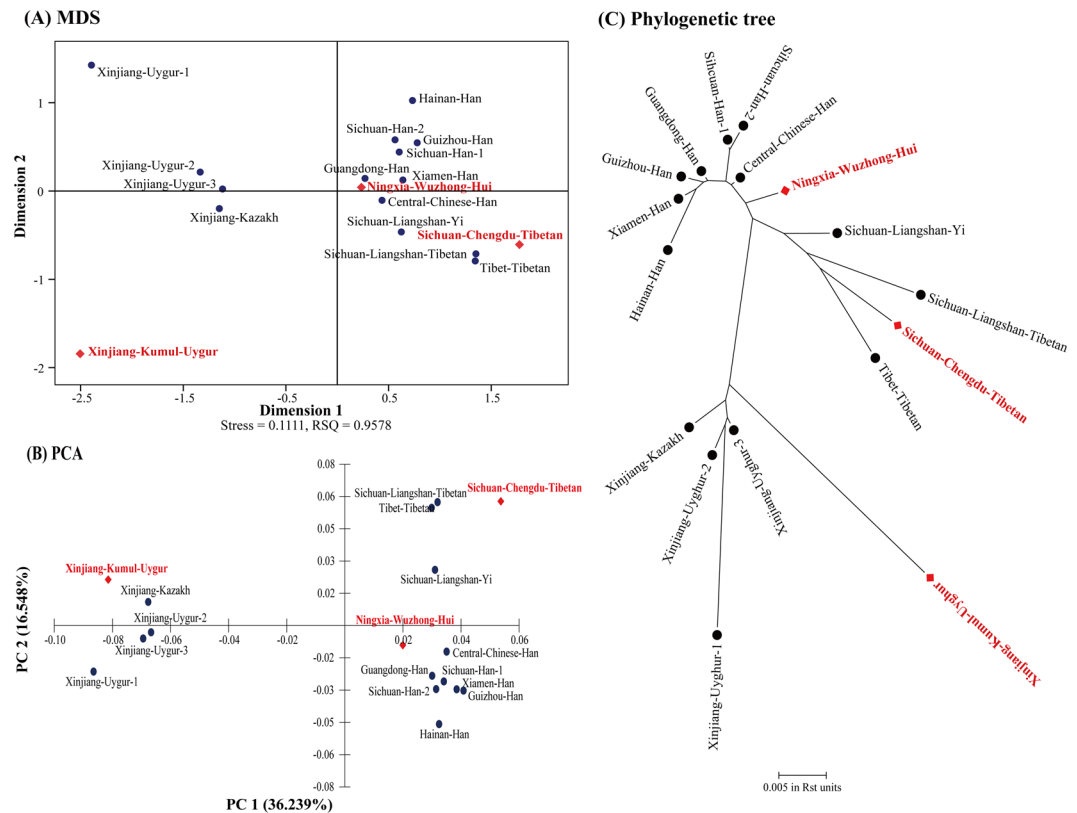


Figure 2. Population comparison analysis between our three studied populations and 15 previously published populations in China. **(A)** The MDS plot based on the genetic distance (R_{st}) of 20 expanded CODIS loci was drawn. **(B)** The PCA plot was performed based on the allele frequencies of 20 expanded CODIS loci. **(C)** The phylogenetic tree was constructed based on R_{st} values with the neighbor-joining method. Red and bold fonts are our research groups.

For the purpose of ascertaining the genetic similarity and diversity between our three studied populations and 14 previously reported Chinese populations (Han^{9,15,16,18–21}, Yi¹⁶, Tibetan^{9,16}, Uygur^{9,17,23} and Kazakh²² populations), Nei's standard genetic distances were calculated (Supplementary Table S14 and Fig. S2). The NWH population had a smaller R_{st} with the Han population, the SCT group had relatively closer genetic distances with the Yi and other Tibetan populations, and the XKU ethnic minority had genetic affinities with other Uygur and Kazakh populations.

Multidimensional scaling and principal component analysis. To further explore the genetic relationships among the 50 populations, a multidimensional scaling (MDS) plot using R_{st} values was drawn by SPSS v19.0 software. As demonstrated in Fig. 1A, our three studied populations and most Asian populations were distributed in the middle-upper part of the x-axis. Among them, the NWH and SCT populations grouped together with the Han, Yi, Tibetan, Korean and Japanese populations; however, the XKU group was relatively farther away from these populations. Most European, South American and some Oceanian populations were located in the middle-lower part of the x-axis, and other populations were scattered around in the MDS. For comparisons among Chinese populations, our three studied groups separated from each other (Fig. 2A). The NWH population gathered together with the Han group and was distributed in the first quadrant, the SCT group was situated in the fourth quadrant with the Central Chinese Han, Yi and Tibetan ethnic groups, and the XKU and remaining three Uygur and Kazakh populations were distributed in the left part of the y-axis.

As shown in Fig. 1B, a principal component analysis (PCA) plot was illustrated based on allele frequencies of 20 expanded CODIS loci by MVSP v3.22 software⁴³. The first principal component accounted for 30.943% of the variation and the second accounted for 16.316%. Four conglomerate groups were observed: the first group mainly consisted of our three studied populations and most Asian populations and was located at the middle-right part of the y-axis. The NWH and SCT ethnic groups densely aggregated with the Han, Yi, Tibetan and Korean populations, and the XKU population intensively grouped with other Uygur, Kazakh and Bangladeshi populations; the second group included most European and Oceanian populations, as well as some South American and South African populations, and was located at the middle-left part of the y-axis; the third one contained the North American and four South American populations and was positioned at the lower-left part of the graph; and the last group contained the Southern Portugal Angolan and two South African populations and was clustered at the upper-left part. In addition, a PCA diagram of 17 Chinese populations (Fig. 2B) indicated that the

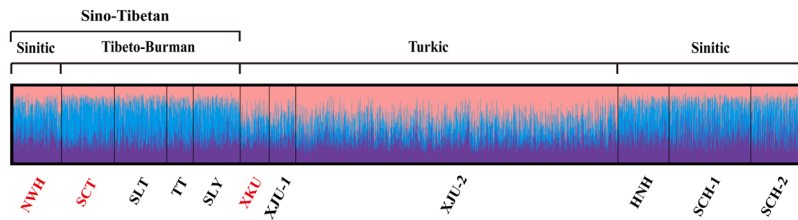


Figure 3. The STRUCTURE plot based on 23 STRs included in the Huaxia Platinum System with the optimum cluster number $K = 3$. Each vertical line stands for data of an individual partitioned into K clusters whose lengths denote the proportion to the estimated component in each of the deductive K groups. Red fonts represent our studied populations and the population abbreviations are displayed in Supplementary Table S2.

NWH population had genetic similarity with the Han population, the SCT ethnic group had close relationships with other Tibetan and Yi ethnic groups, and the XKU group clustered with other Uygur and Kazakh minority ethnicities.

Phylogenetic tree reconstruction. To further analyze the population genetic background of our three studied populations, a phylogenetic tree was reconstructed via the neighbor-joining method based on R_{st} values by using Molecular Evolutionary Genetics Analysis v7.0.26 (MEGA v7.0.26) software⁴⁴. As shown in Fig. 1C, three main branches were clustered: the lower branch was clustered by Southern Portugal Angolan, two Oceanian populations (New Zealand East Polynesian and New Zealand West Polynesian) and three South African populations (Cape-Coloured, amaXhosa and amaZulu); the middle one was divided into two subbranches and contained the American, most European and the Oceanian populations; the upper one was also split into two subclades, our three studied populations, eighteen Asian populations and the Australian Asian population clustered in the upper subclade, while the lower subclade consisted of the Bangladeshi, Indian and South Africa Asian Indian populations. For our three investigated ethnic groups, the NWH group clustered together with the Han, Australian Asian, Japanese and Korean populations and then clustered with the SCT, Yi and other Tibetan populations; however, the XKU population first tended to cluster together with Kazakh and then with other Uygur populations.

Furthermore, as shown in Fig. 2C, the cladogram of 17 Chinese populations also grouped into three branches. The NWH population clustered with the Han group, the SCT population clustered with the Yi and other Tibetan ethnic groups, and the XKU group clustered with other Uygur and Kazakh populations, which made the genetic relationships between our three studied populations and 14 Chinese populations clearer.

Population structure analysis. To illustrate the genetic structure of our three studied populations, a STRUCTURE plot was implemented based on the genotype data of 23 STRs by combining eight previously published populations^{7,13–15}. The probable admixture levels and cluster membership patterns of each population are presented in Fig. 3 and Supplementary Table S15, and the optimum K value was three. The NWH and SCT populations shared similar membership proportions with other Sino-Tibetan populations, while the XKU group had similar admixture levels with other Turkic populations and was different from Sino-Tibetan populations. The proportion of membership of the Sino-Tibetan populations in cluster 2 ranged from 37.17% to 49.03% and was approximately 10% to 20% higher than the Turkic populations (24.18% to 26.93%). In contrast, the proportion of membership of the Sino-Tibetan populations in cluster 3 varied from 20.91% to 26.65% and was approximately 20% lower than the Turkic populations (41.94% to 45.13%).

Discussion

Three minority ethnicities, the Hui, Tibetan and Uygur, have always been a hot topic in research by linguists, anthropologists, archaeologists and population geneticists^{10,17,45,46}. However, the limited genetic research of the three populations in China is far from sufficient. In this study, we focused on the genetic makeup and phylogeny of the three ethnic groups using 23 autosomal STRs included in the Huaxia Platinum System. First, we confirmed that these STR loci conformed to HWE and that there was no LD existing among them. Thus the 23 STRs could be used as independent genetic markers for forensic investigation and population genetics in subsequent research. The assay performed well in the three populations and it could be a robust and effective tool for forensic applications, such as for individual identification and paternity tests.

Population substructure dissection is pivotal in population genetic studies, genotype-phenotype association research and forensic genetics, especially in East Asia with its high cultural, ethnical and geographical diversity. We performed population comparisons based on 20 autosomal STR loci (more loci can provide a higher refinement in the construction of a phylogeny than other similar studies) and found that the results of the interpopulation genetic distances, MDS, PCA and phylogenetic tree were consistent. For population comparisons worldwide, only Asian populations can be distinguished from other continental populations, which proved that the Huaxia Platinum System is useful for the identification of Asian populations. For population comparisons within China, the NWH group showed significant genetic homogeneity with the Han, Yi and Tibetan populations, which supports the origin theory of Hui via simple cultural diffusion⁴⁵. The SCT population also had genetic affinities with the Han and Yi populations, and our results indicated that the high altitude Tibetan (Tibet Tibetan) and the low altitude Tibetan (SCT) populations had strong genetic similarity, this feature is maintained in accordance with

previous findings and is indicated by high-throughput genotyping and sequencing data^{47–49}. Although the XKU had close genetic relationships with other Uygur and Kazakh ethnic groups, it was not as close as that between other Uygur groups. This may be caused by the special geographical position and history of Kumul. Kumul is a multiethnic region (according to the 2010 population census, the Han Chinese accounted for 68.4%, while the Uygur, Kazakh, Hui, Mongolian and other ethnic minorities accounted for 31.6%) and is located at the border of Gansu Province in the East and Mongolia in the North, which is the throat of the Silk Road and the gateway to inland China. It was founded by a people known in Han Chinese source during the 1st millennium BCE, and the Uygur people and other minority ethnicities gradually settled in this area subsequently^{50,51}. Furthermore, structure analysis based on the 23 autosomal STRs manifested that the populations of the same language family had a similar genetic makeup, and this was consistent with the results of population comparison analysis, namely the genetic structure is strongly correlated with linguistic affiliations¹³.

To further understand the genetic background and differentiation of Sino-Tibetan language (Han, Tibetan, Hui and Yi) populations, we are looking for and are validating a large number of new genetic markers with ethnic distinguishing potency. Large-scale population genetic studies using different high-density genetic markers and even whole-genome sequencing (WGS) will be conducted in the future.

Materials and Methods

Ethics Statement. Blood samples were collected with the approval of the Ethics Committee at the Institute of Forensic Medicine, Sichuan University. Written informed consent was obtained from all participants. All methods were conducted according to the guidelines approved by the Institute of Forensic Medicine, Sichuan University, and this study was ratified by the Ethics Committee of Sichuan University (Approval Number: K2015008).

Sample collection, DNA isolation and quantification. Blood samples were collected from 493 unrelated individuals belonging to three Chinese ethnic minorities. These individuals included 183 Hui individuals living in Wuzhong City in Ningxia Hui Autonomous Administrative Subdivision, 200 Tibetan individuals residing in Chengdu City in Sichuan Province and 110 Uygur individuals located in Kumul City in the Xinjiang Uyghur Autonomous Region of Northwest China. During the sample collection process, we ensured that each individual's family has been living in the respective region for at least three generations and did not intermarry with other ethnic groups and that any two individuals had no kinship within a minimum of three generations.

We isolated the genomic DNA with the PureLink[®] Genomic DNA Mini Kit (Thermo Fisher Scientific, USA) according to the manufacturer's instructions. The 7500 Real-time PCR System (Thermo Fisher Scientific, USA) was used to quantify the DNA concentration with the Quantifiler Human DNA quantification kit (Thermo Fisher Scientific, USA). Then, the DNA samples were normalized to 1 ng/ μ L and stored at -20°C until amplification.

PCR amplification and DNA typing. A total of 25 forensically related genetic makers (CSF1PO, FGA, TH01, TPOX, VWA, D1S1656, D2S1338, D2S441, D3S1358, D5S818, D7S820, D8S1179, D10S1248, D12S391, D13S317, D16S539, D18S51, D19S433, D21S11, D22S1045, D6S1043, Penta D, Penta E, Amelogenin and one Y-InDel of rs2032678) were coamplified using the Huaxia Platinum PCR amplification system. Multiplex amplification was conducted on a ProFlex[™] PCR system (Thermo Fisher Scientific, USA) following the manufacturer's protocol. The 25 μ L PCR volume contained 10 μ L of master mix, 10 μ L of primer set, 4 μ L of deionized water and 1 μ L of template DNA. Thermal cycler conditions were as described below: predenaturation at 95°C for 1 min, followed by 26 cycles of 94°C for 3 s, 59°C for 16 s, and 65°C for 29 s, and a final extension at 60°C for 5 min. Separation and analysis of PCR amplified products was performed on the Applied Biosystems 3500 Genetic Analyzer (Thermo Fisher Scientific, USA) using POP-4 polymer (Life Technologies, USA), and injections were conducted at 1.2 kV for 16 s. Allele identification was conducted using the Huaxia Platinum panels, bin sets, stutter files and a 175 relative fluorescence units (RFU) threshold, unless otherwise stated, and were compared with the allele ladder provided by the corresponding kit via Applied Biosystems GeneMapper ID-X version 1.2 software.

Statistical analysis. Allele frequencies, forensic statistical parameters (containing the match probability (MP), power of exclusion (PE), polymorphism information content (PIC) and typical paternity index (TPI)) and p values of the Hardy-Weinberg equilibrium test (HWE-p) of 23 autosomal STR loci were calculated in the modified PowerStat spreadsheet (Promega, Madison, WI, USA). Subsequently, the observed heterozygosity (Ho), expected heterozygosity (He) and p values of the linkage disequilibrium test (LD-p) were assessed in Arlequin v3.5 software⁵². Interspecific differentiation was performed in Arlequin v3.5 software to compute pairwise F_{st} using locus-by-locus pairwise population comparisons. Nei's genetic standard genetic distance (R_{st}) was calculated using the Phylip3.695 package. Multidimensional scaling analysis (MDS) was conducted by SPSS software (IBM SPSS, version 19.0, Chicago), and principal component analysis (PCA) was carried out based on allele frequencies using MVSP v3.22 software⁴³. The phylogenetic tree based on the neighbor-joining method was delineated in the Molecular Evolutionary Genetics Analysis v7.0 (MEGA v7.0) software⁴⁴. The genetic distribution of 11 populations was conducted using STRUCTURE v2.3.4 software⁴⁶, for which the parameters were a100,000 length of burnin period after 100,000 steps for the Markov Chain Monte Carlo (MCMC) using the standard admixture model, five independent runs for each K value and K values from 2 to 7.

Quality controls. Our laboratory is accredited by ISO 17025 and the China National Accreditation Service for Conformity Assessment (CNAS). The recommendations published by the DNA Commission of the International Society for Forensic Genetics (ISFG) were followed in the overall experimental procedure. The positive control of Control DNA 007 and negative control of ddH₂O in each batch of genotyping was conducted.

References

- Butler, J. M. & Hill, C. R. Biology and Genetics of New Autosomal STR Loci Useful for Forensic DNA Analysis. *Forensic Sci. Rev.* **24**, 15–26 (2012).
- Ellegren, H. Microsatellites: simple sequences with complex evolution. *Nat Rev Genet* **5**, 435–445 (2004).
- Hares, D. R. Expanding the CODIS Core Loci in the United States. *Forensic Sci. Int. Genet.* **6**, e52–e54 (2012).
- Hares, D. R. Selection and implementation of expanded CODIS core loci in the United States. *Forensic Sci. Int. Genet.* **17**, 33–34 (2015).
- Ludeman, M. J. *et al.* Developmental validation of GlobalFiler PCR amplification kit: a 6-dye multiplex assay designed for amplification of casework samples. *Int. J. Legal Med.* **6**, 1–19 (2018).
- Oostdik, K. *et al.* Developmental validation of the PowerPlex® Fusion System for analysis of casework and reference samples: A 24-locus multiplex for new database standards. *Forensic Sci. Int. Genet.* **12**, 69–76 (2014).
- Jiang, X., Guo, F., Jia, F., Jin, P. & Sun, Z. Development of a 20-locus fluorescent multiplex system as a valuable tool for national DNA database. *Forensic Sci. Int. Genet.* **7**, 279–289 (2013).
- Ge, J. *et al.* Future directions of forensic DNA databases. *Croat. Med. J.* **55**, 163–166 (2014).
- Wang, Z. *et al.* Developmental Validation of the Huaxia Platinum System and application in 3 main ethnic groups of China. *Sci. Rep.* **6**, 31075 (2016).
- Guo, F. Population genetics for 17 Y-STR loci in Hui ethnic minority from Liaoning Province. *Northeast China. Forensic Sci. Int. Genet.* **28**, e36–e37 (2017).
- Zhao, Q. *et al.* Population genetics study using 26 Y-chromosomal STR loci in the Hui ethnic group in China. *Forensic Sci. Int. Genet.* **28**, e26–e27 (2017).
- Matisoff, J. A. Sino-Tibetan linguistics-present state and future prospects. *Annual Review of Anthropology* **20**, 469–504 (1991).
- Yao, H. B. *et al.* Genetic structure of Tibetan populations in Gansu revealed by forensic STR loci. *Sci. Rep.* **7**, 41195 (2017).
- Tan, J. *et al.* Characteristics of dental morphology in the Xinjiang Uyghurs and correlation with the EDARV370A variant. *Sci. China Life Sci.* **57**, 510–518 (2014).
- He, G., Wang, M., Liu, J., Hou, Y. & Wang, Z. Forensic features and phylogenetic analyses of Sichuan Han population via 23 autosomal STR loci included in the Huaxia Platinum System. *Int. J. Legal Med.* (2017).
- Wang, M. *et al.* Genetic characteristics and phylogenetic analysis of three Chinese ethnic groups using the Huaxia Platinum System. *Sci. Rep.* **8**, 2429 (2018).
- Jin, X. *et al.* Phylogenetic analysis and forensic genetic characterization of Chinese Uyghur group via autosomal multi STR markers. *Oncotarget* **8**, 73837–73845 (2017).
- Yang, L. *et al.* Population data of 23 autosomal STR loci in the Chinese Han population from Guangdong Province in southern China. *Int. J. Legal Med.* **132**, 133–135 (2017).
- Liu, Y. *et al.* Developmental validation of a 6-dye typing system with 27 loci and application in Han population of China. *Sci. Rep.* **7**, 4706 (2017).
- Wu, L., Pei, B., Ran, P. & Song, X. Population genetic analysis of Xiamen Han population on 21 short tandem repeat loci. *Leg. Med. (Tokyo)* **26**, 41–44 (2017).
- Yang, M. *et al.* Population genetic data and mutations of 22 autosomal STR loci in Guizhou Han population. *Forensic Sci. Int. Genet.* **29**, e29–e30 (2017).
- Zhang, H. *et al.* Population genetic analysis of the GlobalFiler STR loci in 748 individuals from the Kazakh population of Xinjiang in northwest China. *Int. J. Legal Med.* **130**, 1187–1189 (2016).
- Zhang, H. *et al.* Forensic and population genetic analysis of Xinjiang Uyghur population on 21 short tandem repeat loci of 6-dye GlobalFiler PCR Amplification kit. *Forensic Sci. Int. Genet.* **22**, 22–24 (2016).
- Choi, E.-J. *et al.* Forensic and population genetic analyses of the GlobalFiler STR loci in the Mongolian population. *Genes & Genomics* **39**, 423–431 (2017).
- Hossain, T. *et al.* Genetic polymorphism studies on 22 autosomal STR loci of the PowerPlex Fusion System in Bangladeshi population. *Leg. Med. (Tokyo)* **23**, 44–46 (2016).
- Singh, M. & Nandinini, M. R. Population genetic analyses and evaluation of 22 autosomal STRs in Indian populations. *Int. J. Legal Med.* **131**, 971–973 (2017).
- Fujii, K. *et al.* Allele frequencies for 22 autosomal short tandem repeat loci obtained by PowerPlex Fusion in a sample of 1501 individuals from the Japanese population. *Leg. Med. (Tokyo)* **16**, 234–237 (2014).
- Park, J. H. *et al.* Genetic variation of 23 autosomal STR loci in Korean population. *Forensic Sci. Int. Genet.* **7**, e76–e77 (2013).
- Park, H. C. *et al.* Population genetic study for 24 STR loci and Y indel (GlobalFiler™ PCR Amplification kit and PowerPlex® Fusion system) in 1000 Korean individuals. *Leg. Med. (Tokyo)* **21**, 53–57 (2016).
- Ng, J. *et al.* Native American population data based on the Globalfiler® autosomal STR loci. *Forensic Sci. Int. Genet.* **24**, e12–e13 (2016).
- Aguilar-Velazquez, J. A. *et al.* Population data of 23 STR loci (PowerPlex® Fusion System) in Mexican Mestizos from the West Region. *Int. J. Legal Med.* **130**, 1489–1491 (2016).
- Ramos-Gonzalez, B. *et al.* Population data of 24 STRs in Mexican-Mestizo population from Monterrey, Nuevo Leon (Northeast Mexico) based on Powerplex® Fusion and GlobalFiler® kits. *Forensic Sci. Int. Genet.* **21**, e15–e17 (2016).
- Almeida, C. *et al.* Population data of the GlobalFiler® Express loci in South Portuguese population. *Forensic Sci. Int. Genet.* **19**, 39–41 (2015).
- Guerreiro, S., Ribeiro, T., Porto, M. J., Carneiro de Sousa, M. J. & Dario, P. Characterization of GlobalFiler loci in Angolan and Guinean populations inhabiting Southern Portugal. *Int. J. Legal Med.* **131**, 365–368 (2017).
- Ossowski, A. *et al.* Population analysis and forensic evaluation of 21 autosomal loci included in GlobalFiler PCR Kit in Poland. *Forensic Sci. Int. Genet.* **29**, e38–e39 (2017).
- Westen, A. A. *et al.* Combining results of forensic STR kits: HDplex validation including allelic association and linkage testing with NGM and Identifiler loci. *Int. J. Legal Med.* **126**, 781–789 (2012).
- Taylor, D., Bright, J.-A., McGovern, C., Neville, S. & Grover, D. Allele frequency database for GlobalFiler™ STR loci in Australian and New Zealand populations. *Forensic Sci. Int. Genet.* **28**, e38–e40 (2017).
- Moyes, C. B. *et al.* Population data of the 21 autosomal STRs included in the GlobalFiler® kits in population samples from five Brazilian regions. *Forensic Sci. Int. Genet.* **26**, e28–e30 (2017).
- Parolin, M. L., Real, L. E., Martinazzo, L. B. & Basso, N. G. Population genetic analyses of the Powerplex® Fusion kit in a cosmopolitan sample of Chubut Province (Patagonia Argentina). *Forensic Sci. Int. Genet.* **19**, 221–222 (2015).
- Vullo, C. *et al.* Genetic polymorphism of 22 autosomal STR markers in Paraguay. *Forensic Sci. Int. Genet.* **25**, e16–e17 (2016).
- Gaviria, A. *et al.* Twenty two autosomal microsatellite data from Ecuador (Powerplex Fusion). *Forensic Science International: Genetics Supplement Series* **4**, e330–e333 (2013).
- Ristow, P. G., Cloete, K. W. & D'Amato, M. E. GlobalFiler® Express DNA amplification kit in South Africa: Extracting the past from the present. *Forensic Sci. Int. Genet.* **24**, 194–201 (2016).
- Kovach, W. L. MVSP: a multivariate statistical package for windows. version 3.22. *Kovach Computing Services, Pentraeth* (2013).
- Kumar, S., Stecher, G. & Tamura, K. MEGA7-Molecular Evolutionary Genetics Analysis Version 7.0 for Bigger Datasets. *Mol Biol Evol* **33**, 1870–1874 (2016).

45. Yao, H. B. *et al.* Genetic evidence for an East Asian origin of Chinese Muslim populations Dongxiang and Hui. *Sci. Rep.* **6**, 38656 (2016).
46. He, G. *et al.* Genetic variation and forensic characterization of highland Tibetan ethnicity revealed by autosomal STR markers. *Int. J. Legal Med.* **132**(4), 1097–1102 (2018).
47. He, G. *et al.* Genetic diversity and phylogenetic characteristics of Chinese Tibetan and Yi minority ethnic groups revealed by non-CODIS STR markers. *Sci. Rep.* **8**, 5895 (2018).
48. Simonson, T. S. *et al.* Genetic evidence for high-altitude adaptation in Tibet. *Sci* **329**, 72–75 (2010).
49. Lorenzo, F. R. *et al.* A genetic mechanism for Tibetan high-altitude adaptation. *Nat. Genet.* **46**, 951–956 (2014).
50. Bailey & H., W. *Indo-Scythian Studies: Being Khotanese Texts*, 6–7, 16, 101, 133 (Cambridge University Press, 2009).
51. Hill, J. E. *Through the Jade Gate to Rome: A Study of the Silk Routes during the Later Han Dynasty 1st to 2nd Centuries CE* (BookSurge, 2009).
52. Excoffier, L. & Lischer, H. E. Arlequin suite ver 3.5: a new series of programs to perform population genetics analyses under Linux and Windows. *Mol. Ecol. Resour.* **10**, 564–567 (2010).

Acknowledgements

We would like to thank all participants. This study was supported by grants from the National Natural Science Foundation of China (81871532 and 81571854), the Open project of Shanghai Key Laboratory of Forensic Medicine (Academy of Forensic Science) (KF1814) and the Fundamental Research Funds for the Central Universities (20826041A4408 and YJ201651). The funders had no role in study design, data collection and analysis, decision to publish, or preparation of the manuscript.

Author Contributions

J.L. and Z.W. wrote the manuscript, G.H. and Z.J. collected the samples, J.L. and M.W. conducted the experiment, J.L. and Z.W. analyzed the results, Z.W. and Y.H. conceived the experiment. All authors reviewed the manuscript.

Additional Information

Supplementary information accompanies this paper at <https://doi.org/10.1038/s41598-019-39794-y>.

Competing Interests: The authors declare no competing interests.

Publisher's note: Springer Nature remains neutral with regard to jurisdictional claims in published maps and institutional affiliations.



Open Access This article is licensed under a Creative Commons Attribution 4.0 International License, which permits use, sharing, adaptation, distribution and reproduction in any medium or format, as long as you give appropriate credit to the original author(s) and the source, provide a link to the Creative Commons license, and indicate if changes were made. The images or other third party material in this article are included in the article's Creative Commons license, unless indicated otherwise in a credit line to the material. If material is not included in the article's Creative Commons license and your intended use is not permitted by statutory regulation or exceeds the permitted use, you will need to obtain permission directly from the copyright holder. To view a copy of this license, visit <http://creativecommons.org/licenses/by/4.0/>.

© The Author(s) 2019