

Computing the Internode Certainty and Related Measures from Partial Gene Trees

Kassian Kobert,^{*1} Leonidas Salichos,^{2,3} Antonis Rokas,^{3,4} and Alexandros Stamatakis^{1,5}

¹Heidelberg Institute for Theoretical Studies, Heidelberg, Germany

²Department of Molecular Biophysics and Biochemistry, Yale University

³Department of Biological Sciences, Vanderbilt University

⁴Department of Biomedical Informatics, Vanderbilt University Medical Center

⁵Institute for Theoretical Informatics, Karlsruhe Institute of Technology, Postfach 6980, Karlsruhe, 76128, Germany

*Corresponding author: E-mail: Kassian.Kobert@gmail.com

Associate editor: Michael Rosenberg

Abstract

We present, implement, and evaluate an approach to calculate the internode certainty (IC) and tree certainty (TC) on a given reference tree from a collection of partial gene trees. Previously, the calculation of these values was only possible from a collection of gene trees with exactly the same taxon set as the reference tree. An application to sets of partial gene trees requires mathematical corrections in the IC and TC calculations. We implement our methods in RAXML and test them on empirical datasets. These tests imply that the inclusion of partial trees does matter. However, in order to provide meaningful measurements, any dataset should also include trees containing the full species set.

Key words: bipartition frequencies, clade support, gene trees, internode certainty.

Introduction

Motivation and Related Work

Recently, Salichos and Rokas (2013) proposed a set of novel measures for quantifying the confidence for bipartitions in a phylogenetic tree (i.e., a leaf-labeled tree depicting the relationships between taxa). These measures are the so-called Internode Certainty (IC) and Tree Certainty (TC), which are calculated for a specific reference tree given a collection of other trees with the exact same taxon set.

The calculation of their scores was implemented (Salichos et al. 2014) in the phylogenetic software RAXML (Stamatakis 2014).

The underlying idea of IC is to assess the degree of conflict of each internal branch (i.e., a branch connecting two internal nodes) of a phylogenetic reference tree by calculating Shannon's Measure of Entropy (Shannon 1948). This score is evaluated for each bipartition in the reference tree independently. The basis for the calculations is the frequency of occurrence of this bipartition and the frequencies of occurrences of a set of conflicting bipartitions from the collection of trees. In contrast to classical scoring schemes for the branches, such as simple bipartition support or posterior probabilities, the IC score also reflects to which degree the most favored bipartition is contested.

The reference tree itself can, for example, be constructed from this tree set or can be a maximum likelihood tree for a phylogenomic alignment. The tree collection may, for example, come from running multiple phylogenetic searches on

the same dataset, multiple bootstrap runs (Felsenstein 1985; Efron et al. 1996), or from running the analyses separately on different genes, or different subsets of the genes (as done, e.g., in Hejnowicz et al. 2009). While for the first two cases the assumption of having the same taxon set is reasonable, this is often not the case for different genes. For example, gene sequences may be available for different subsets of taxa simply due to sequence availability or the absence of some genes in certain species.

In this article, we show how to compute an appropriately corrected IC on collections of partial gene trees. When using partial bipartitions for the calculation of the IC and TC scores we need to solve two problems. First, we need to calculate their respective adjusted support (analogous to the frequency of occurrence) (see section "Correcting the Support"). Unlike in the standard case, with full taxon sets, this information cannot be directly obtained. Then, we also need to identify all conflicting bipartitions (see section "New Approaches: Adjusting the IC").

An alternative method for calculating these frequencies has recently been independently developed by Smith et al. (2015). The method developed by Smith et al. is similar to what we denote as *lossless support* (see section "Correcting the Support").

Bipartitions, IC, and TC

We now briefly define the concepts and notations that we will use throughout the article. In addition, we formally define IC and TC.

Bipartition: Given a taxon set S , a bipartition B of S is defined as a tuple of taxon subsets (X, Y) with $X, Y \subset S$, $X \neq \emptyset \neq Y$ and $X \cup Y = S$, $X \cap Y = \emptyset$. We write, $B = X|Y = Y|X$.

In phylogenetic trees, a bipartition is obtained by removing a single edge from the tree. Let b be an edge connecting nodes n_1 and n_2 in some unrooted phylogenetic tree T . The bipartition that is obtained by removing b is denoted by $B(b)$, which we define as: $B(b) = X(n_1)|X(n_2)$, where $X(n_1)$ and $X(n_2)$ are all taxa that are still connected to nodes n_1 and n_2 , respectively, if branch b is removed.

Trivial bipartition We call a bipartition $B = X|Y$ *trivial* if $|X| = 1$ or $|Y| = 1$.

Trivial bipartitions are uninformative, since having only a single taxon in either X or Y means that this taxon is connected to the rest of the tree. This is trivially given for any tree containing this taxon.

Bipartitions with $|X| \geq 2$ and $|Y| \geq 2$ are called *nontrivial*. In contrast to trivial bipartitions, nontrivial bipartitions contain information about the structure of the underlying topology.

Henceforth, the term bipartition will always refer to a nontrivial bipartition.

Sub-bipartition, super-bipartition We denote $B_1 = X_1|Y_1$ as a *sub-bipartition* of $B_2 = X_2|Y_2$ if $X_1 \subseteq X_2$ and $Y_1 \subseteq Y_2$, or $X_1 \subseteq Y_2$ and $Y_1 \subseteq X_2$.

The bipartition B_2 is then said to be a *super-bipartition* of B_1 .

We also need a notion of compatibility and conflict between bipartitions.

Conflicting bipartitions Two bipartitions $B_1 = X_1|Y_1$ and $B_2 = X_2|Y_2$ are *conflicting/incompatible* if there exists no single tree topology that explains/contains both bipartitions. Otherwise, if such a tree exists, they must be compatible. More formally, the bipartitions B_1 and B_2 are incompatible *if and only if* all of the following properties hold (see, e.g., Bryant 2003):

$$\begin{aligned} X_1 \cap X_2 &\neq \emptyset \\ \wedge X_1 \cap Y_2 &\neq \emptyset \\ \wedge Y_1 \cap X_2 &\neq \emptyset \\ \wedge Y_1 \cap Y_2 &\neq \emptyset. \end{aligned}$$

This definition of conflict and compatibility is valid irrespective of whether the taxon sets of B_1 and B_2 are identical or not.

Relative frequency Let $B(b)$ be the bipartition induced by removing branch b , and let B^* be the bipartition from the tree collection that has the highest frequency of occurrence and is incompatible with $B(b)$. Let the term X be the relative frequencies of the involved bipartitions. More formally, we define $X_{B(b)}$ as,

$$X_{B(b)} := \frac{f(B(b))}{f(B(b)) + f(B^*)}, X_{B^*} := \frac{f(B^*)}{f(B(b)) + f(B^*)}, \quad (1)$$

where f simply denotes the frequency of occurrence of a bipartition in the tree set.

For the standard case of IC calculations (without partial gene trees), the frequency of occurrence f is simply the number of observed bipartitions in the tree set. In section “Correcting the Support”, we will show how to calculate the support (adjusted frequencies) for bipartitions from partial gene trees. We compute this support using the observed frequencies of occurrence. The support for partial bipartitions can then be used analogously to the frequency of occurrence in equation (1) for calculating the relative frequencies.

Internode certainty The IC score (as defined in Salichos and Rokas 2013) is calculated using Shannon’s measure of entropy (Shannon 1948). For a branch b we define $IC(b)$ as follows:

$$IC(b) = 1 + X_{B(b)} \cdot \log_2(X_{B(b)}) + X_{B^*} \cdot \log_2(X_{B^*}). \quad (2)$$

Similar to the IC score, Salichos et al. (2014) also introduced the *internode certainty all* (ICA) value for each branch. However, before we formally define the ICA value, we need to provide some additional definitions and make some observations.

Conflicting set Let the set $C^*(b)$, as defined in Salichos et al. (2014), be $B(b)$ union the set of bipartitions that conflict with $B(b)$ and with each other, while the sum of support for elements in $C^*(b)$ is maximized.

In practice, the set $C^*(b)$ is not easy to obtain. In fact, as we show in the following observation, maximizing the sum of supports for elements in $C^*(b)$ renders the search for an optimal choice of $C^*(b)$ NP-hard.

Observation: Finding the optimal set $C^*(b)$ is NP-hard.

This can easily be seen by considering the related, known to be NP-hard, maximum weight independent set problem (Garey and Johnson 1990). Alternatively, the similarity to the problem of constructing the asymmetric median tree, which is also known to be NP-hard (Phillips and Warnow 1996), can be observed.

For the maximum weight independent set problem, we are confronted with an undirected graph whose nodes have weights. The task is then to find a set of nodes that maximize the sum of weights, such that no two nodes in this set are connected via an edge. A reduction from this problem to finding $C^*(b)$ is straight-forward. Let (W, E) be an undirected graph with weighted nodes W and edges E . Let $B(b) = xy|vz$. First, we introduce one bipartition $xz|vy$ for every node in W , with support equal to the node weight. Then, for every pair of bipartitions where the corresponding nodes in W do not share an edge in E , we add four taxa that are unique to those bipartitions in such a way that they can never be compatible (consider $\dots ab|cd \dots$ and $\dots ac|bd \dots$). If we find $C^*(b)$ for the newly introduced bipartitions, the corresponding nodes yield a maximum weight independent set.

For this reason, the definition of the ICA, used and implemented in Salichos et al. (2014), which we also use here, does not actually use $C^*(b)$ itself, but an approximation thereof. The set $C(b)$ is constructed via a greedy addition strategy to approximate $C^*(b)$. Note that $C(b)$ has a slightly different definition in Salichos and Rokas (2013).

In addition, Salichos and Rokas (2013) advocate to use a threshold of 5% support frequency for conflicting bipartitions in $C(b)$. Specifically, $C(b)$ may only take elements \hat{B} that have support

$$f(\hat{B}) \geq 0.05. \quad (3)$$

This is done to speed up the calculation. Under this restriction, the problem of maximizing the support for $C(b)$ is no longer *NP-hard*. However, the search space is still large enough to warrant a greedy addition strategy instead of searching for the best solution exhaustively.

Again, let X denote the relative support of the bipartitions in $C(b)$. That is,

$$X_{\hat{B}} = \frac{f(\hat{B})}{\sum_{B^c \in C(b)} f(B^c)}$$

for all involved bipartitions $\hat{B} \in C(b)$.

ICA We can now define the *ICA* for some branch b as

$$ICA(b) = 1 + \sum_{B^c \in C(b)} X_{B^c} \cdot \log_{|C(b)|}(X_{B^c}). \quad (4)$$

Note that $ICA(b)$ depends on $C(b)$. Thus, the definition for *ICA* presented here is also only an approximation. Different heuristics for constructing $C(b)$ will yield different values for $ICA(b)$.

Further note that iff $B(b)$ does not have the largest frequency among all bipartitions in $C(b)$, the $IC(B)$ and $ICA(b)$ scores are multiplied with -1 to indicate this. This distinction is necessary since we may have $|ICA(\hat{b})| = |ICA(b)|$ for some $\hat{b} \in C(b)$. So an artificial negative value denotes that the bipartition in the reference tree is not only strongly contested, but not even the bipartition with the highest support. This can, for example, occur when the reference tree is the maximum-likelihood tree and the tree set contains bootstrap replicates.

From the *IC* scores and *ICA* scores, the respective Tree Certainties TC and TCA can be computed. These are defined as follows:

Tree certainty The TC and TCA scores are simply the sum over all respective *IC* or *ICA* scores, as defined in the following:

$$TC = \sum_{\substack{\text{b internal branch} \\ \text{in reference tree}}} IC(b) \quad (5)$$

$$TCA = \sum_{\substack{\text{b internal branch} \\ \text{in reference tree}}} ICA(b). \quad (6)$$

Furthermore, the *relative TC* and *TCA* scores are defined as the respective values normalized by the number of branches b for which $B(b)$ is a nontrivial bipartition.

As we can see, all we need to calculate the *IC*, *TC*, *ICA*, and *TCA* scores is to calculate $f(\hat{B})$ (see section “Correcting the Support”) and $C(b)$ (see section “Finding Conflicting Bipartitions”).

New Approaches: Adjusting the *IC*

Now we must consider how to obtain the relevant information, namely the sets C and corrected support f , from partial bipartitions.

First, we formally define the input. We are given a so-called reference tree T with taxon set $S(T)$ node set $V(T) \supseteq S(T)$ and a set of branches $E(T) \subset V(T) \times V(T)$ connecting the nodes of $V(T)$. Let $\hat{E}(T) \subset E(T)$ be the set of internal branches b for which the bipartition $B(b)$ is nontrivial.

In addition, we are given a collection of trees \hat{T} . From this collection, we can easily extract the set of all nontrivial bipartitions *Bip*. The bipartitions in *Bip* are used to adjust the frequency of other bipartitions. The taxon sets of the bipartitions in *Bip* are subsets of, or equal to, $S(T)$. We call a bipartition with fewer than $|S(T)|$ taxa a partial bipartition. A bipartition that includes all taxa from $S(T)$ is called comprehensive or full bipartition. Similarly, a tree containing only full bipartitions is called comprehensive. From *Bip* and the bipartitions in the reference tree we can construct a set of maximal bipartitions P for which we will adjust the score. Bipartitions in P are all those bipartitions in *Bip* and the reference tree that are not sub-bipartitions of any other bipartition. We do this step, since any information contained in a sub-bipartition is also contained in the super-bipartition. Specifically, the implied gene tree (or species tree) for the super-bipartition can also explain the gene tree for all taxa in the sub-bipartition. How the frequency of occurrence of the sub-bipartition affects the frequency of occurrence of the super-bipartition is the focus of section “Correcting the Support”.

We implicitly assume that each bipartition in P should actually contain all taxa from $S(T)$. To achieve this, we keep the placement of the missing taxa ambiguous. For this, we assume that each missing taxon has a uniform probability to fall into either side of the bipartition. Figure 1 gives an overview of the steps explained in the following sections.

Correcting the Support

We aim to measure the support the given set of partial trees \hat{T} (or bipartition set *Bip*) induces for any of the bipartitions in P . We call this the *adjusted frequency* or *adjusted support*. If *Bip* and P only contain comprehensive bipartitions, the support for any given bipartition is simply equal to its frequency of occurrence.

In case of partial bipartitions, some thought must be given to the process. Imagine a comprehensive bipartition $B = X|Y$ in P and a sub-bipartition D of B in *Bip*. Even though D does not exactly match B , it also does not contradict it. More so, it supports the super-bipartition by agreeing on a common sub-topology.

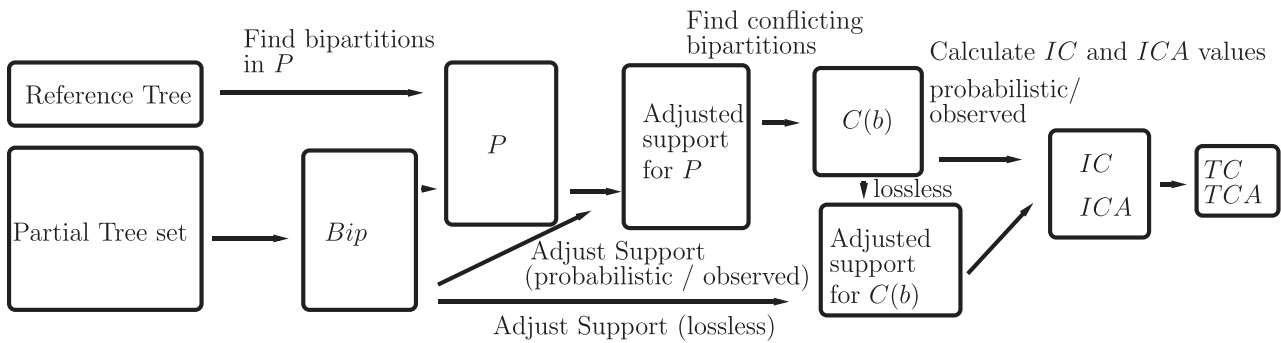


FIG. 1. Overview of the proposed methods.

We distinguish whether the observed sub-bipartition D from Bip is allowed to support any possible bipartition, even those not observed in Bip and P , or just those we observe in P . There seems to be no clear answer as to which of these assumptions is more realistic. The choice is thus merely a matter of definition.

Support of All Possible Bipartitions: Probabilistic Support

If we assume that an observed sub-bipartition from Bip supports all possible super-bipartitions, not just those in P , with equal probability, the impact on the adjusted support of each such super-bipartition from P ($C(b)$) quickly becomes negligible. Consider the following example:

Let $B = X|Y \in P$ be a super-bipartition of $D = x|y \in Bip$ with $|X \setminus x| + |Y \setminus y| = k$. This means that B contains k taxa that D does not contain. There are 2^k distinct bipartitions with taxon set $X \cup Y$ that also contain the constraints set by D . For $k = 10$ we already obtain $2^{10} = 1024$ such bipartitions. Thus, the support of D will only increase (adjust) the support of B by $< 1\%$. More formally, let R_B be the set of sub-partitions in Bip of the comprehensive bipartition B in P and f_D the support for a partial bipartition D in Bip . Then the adjusted support for B , f_B is

$$f_B = \sum_{D \in R_B} \frac{f_D}{2^{(|S(T)| - n_D)}},$$

where n_D is the number of taxa in D , and $|S(T)|$ the number of taxa in the reference tree. We use $|S(T)|$ in this formula, since any bipartition in P is implicitly a comprehensive bipartition. By this we mean that even though we do not explicitly assign the remaining taxa from a partial bipartition $B = X|Y$ in P to X or Y , they must belong to one of these sets. Thus, the missing taxa in D have $1/2$ probability to belong to the same set (X or Y) each.

The effect of such an adjustment scheme is that partial bipartitions in Bip with fewer taxa affect the TC and IC scores substantially less than bipartitions with more taxa. This can also be observed in our computational results in section “Results and Discussion”. Since f_B is the sum over the observed frequency times the probability of constructing the actual bipartition implied by B , we call this the *probabilistic* adjustment scheme.

The motivation behind the probabilistic adjustment scheme is that a partial bipartition can stem from any full bipartition that complies with the constraints induced by this partial bipartition. Furthermore, a frequency $f > 1$ for a partial bipartition can emerge due to the existence of several different, implied full bipartitions. Consider the following example: let $B_1 = ABY|XCD$ and $B_2 = ABX|YCD$ be two bipartitions from two distinct gene trees. Now, assume that taxa X and Y are not present in these gene trees (e.g., due to incomplete species sampling). In this case, the respective trees of these two gene trees only contain the same partial bipartition $B_p = AB|CD$.

By re-distributing the frequency of B_p via the probabilistic adjustment scheme to all possible bipartitions, we distribute the corresponding support among B_1 and B_2 , as well as $B_3 = ABXY|CD$ and $B_4 = AB|XYCD$.

Support of Observed Bipartitions: Observed Support

Now suppose that B_1 and B_2 are in P since they are present in some comprehensive or partial gene trees. Further, suppose that the bipartitions B_3 and B_4 (as defined above) are not in P since they were never observed in the tree set. Due to missing data, other partial gene trees may produce bipartition B_p . In the above example for the probabilistic support, the support of B_p is not only distributed solely among B_1 and B_2 , but also among B_3 and B_4 , even though B_3 and B_4 were not observed in the tree set.

Thus, if we do not want to discard some of the frequency of occurrence when calculating the adjusted support from partial bipartitions, we can distribute their frequency of occurrence uniformly among comprehensive bipartitions in P . When we assume that the prior distribution of bipartitions in P is uniform, this process is simple. For a given partial bipartition D in Bip , with support f_D , let S_D be the set of bipartitions in P that are super-bipartitions of D . Then, D contributes $\frac{f_D}{|S_D|}$ support to any $B \in S_D$. In other words, the adjusted support for each full bipartition B is

$$f_B = \sum_{D \text{ s.t. } B \in S_D} \frac{f_D}{|S_D|}. \quad (7)$$

Since this distribution scheme distributes the support for each sub-bipartition among bipartitions that we observed in the tree set only, we call this the *observed* support distribution scheme.

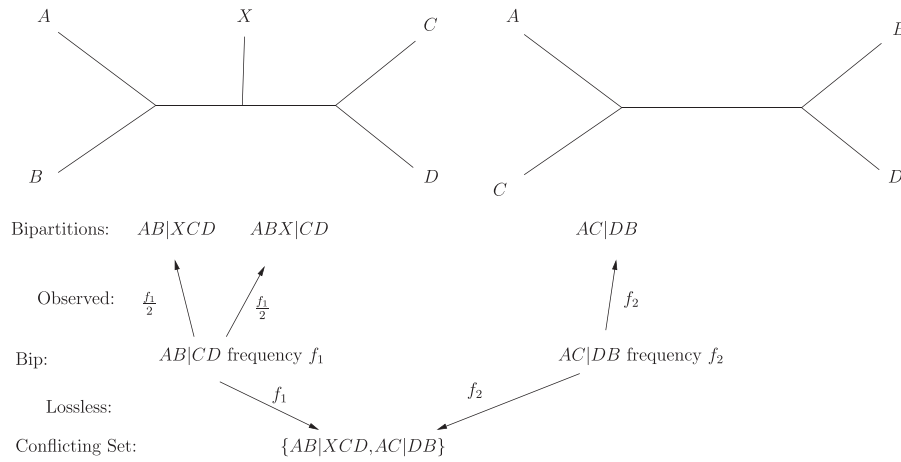


Fig. 2. Distribution of adjusted support for observed and lossless adjustment scheme.

Support of Conflicting Bipartitions: Lossless Support

One problem with the adjustment strategy explained above is that trees with more taxa typically have more bipartitions in P than trees with fewer taxa. For an intuitive understanding of why this can be problematic, consider the following example (also illustrated in [fig. 2](#)). Let reference bipartitions be $\hat{B}_1 = A B|XCD$ and $\hat{B}_2 = ABX|CD$. Further, let $Bip = \{\hat{B}_3, \hat{B}_4\}$ with $\hat{B}_3 = AB|CD$ and $\hat{B}_4 = AC|DB$. We see that \hat{B}_3 is the only, and exclusive, sub-bipartition of \hat{B}_1 and \hat{B}_2 in Bip . Further, bipartition \hat{B}_4 conflicts with both reference bipartitions, and no other bipartition is a super-bipartition of it. Let the bipartitions \hat{B}_3 and \hat{B}_4 both have a frequency of occurrence of f . If we apply the above distribution scheme, bipartitions \hat{B}_1 and \hat{B}_2 have an adjusted frequency of $f/2$, while \hat{B}_4 has an adjusted frequency of f . However, penalizing bipartitions from trees with larger taxon sets seems unwarranted. Thus, we propose a correction method that takes this into account. In order to circumvent this behavior, we choose to distribute the frequency of any sub-bipartition only to a set of conflicting super-bipartitions (namely bipartitions in $C(b)$). We get the following formula for the adjusted frequencies:

$$f_B^b = \sum_{D.s.t. B \in S_D} \frac{f_D}{|S_D \cap C(b)|} \tag{8}$$

where S_D is defined as before. Note that the adjusted support now depends on the set of conflicting bipartitions $C(b)$, which is defined by a branch b . This means that the adjusted support for a given (conflicting) bipartition must be calculated separately for each reference bipartition $B(b)$.

This distribution scheme allocates the entire frequency of sub-bipartitions exclusively to these conflicting bipartitions. Thus, the sum of adjusted frequencies for all conflicting bipartitions is exactly equal to the sum of frequencies of occurrence of the found sub-bipartitions. For this reason, we call this the *lossless* adjustment scheme.

Note that $C(b)$ is obtained via a greedy addition strategy depending on the adjusted support of bipartitions. Since the adjusted support according to the lossless adjustment scheme depends on $C(b)$, we obtain a recursive definition. To alleviate this, we simply precompute the

above explained probabilistic adjustment scheme to obtain an adjusted support for each bipartition. The set of conflicting bipartitions $C(b)$ is then found with respect to the probabilistically adjusted support values. Then, using $C(b)$, the actual lossless support adjustment is calculated and replaces the probabilistic support in the calculation of IC and ICA values.

For the above example, we get the following. Let $\{\hat{B}_1, \hat{B}_4\}$ be the set of conflicting bipartitions. Then, the support for \hat{B}_1 and \hat{B}_4 after applying the lossless distribution scheme is f for both bipartitions, which is the desired behavior for this distribution scheme.

Finding Conflicting Bipartitions

To construct $C(b)$ greedily, as proposed above, the support of the bipartitions must be known. However, the lossless support adjustment scheme explained above is only reasonable on a set of conflicting bipartitions (e.g., $C(b)$ itself). To avoid this recursive dependency, we first compute an adjusted support that does not depend on $C(b)$ for this case. (Here, we use the probabilistic adjusted support, as explained in section “Correcting the Support”, to obtain an initial adjusted support.) Then, a greedy algorithm is used to approximate the set $C(b)$ with the highest sum of adjusted support with respect to the initial adjustment. Once $C(b)$ is obtained, the support for all bipartitions in $C(b)$ is adjusted using the new method, which depends on a set of conflicting bipartitions. These new values then replace the initial estimate via the first adjustment scheme.

Keeping the above in mind, we can easily construct $C(b)$ from P for every branch b in $\hat{E}(T)$. Note that we also defined the reference bipartition $B(b)$ to be in $C(b)$. Thus, we simply start with $B(b)$ and iterate through the elements of P in decreasing order of adjusted support (if we are to apply the probabilistic or lossless distribution scheme, the probabilistic adjusted support is used in this step. Similarly, the observed adjusted support is used, if this distribution is desired) and add every bipartition that conflicts with all other bipartitions added to $C(b)$ so far. During this process, the threshold given in [equation \(3\)](#) is applied.

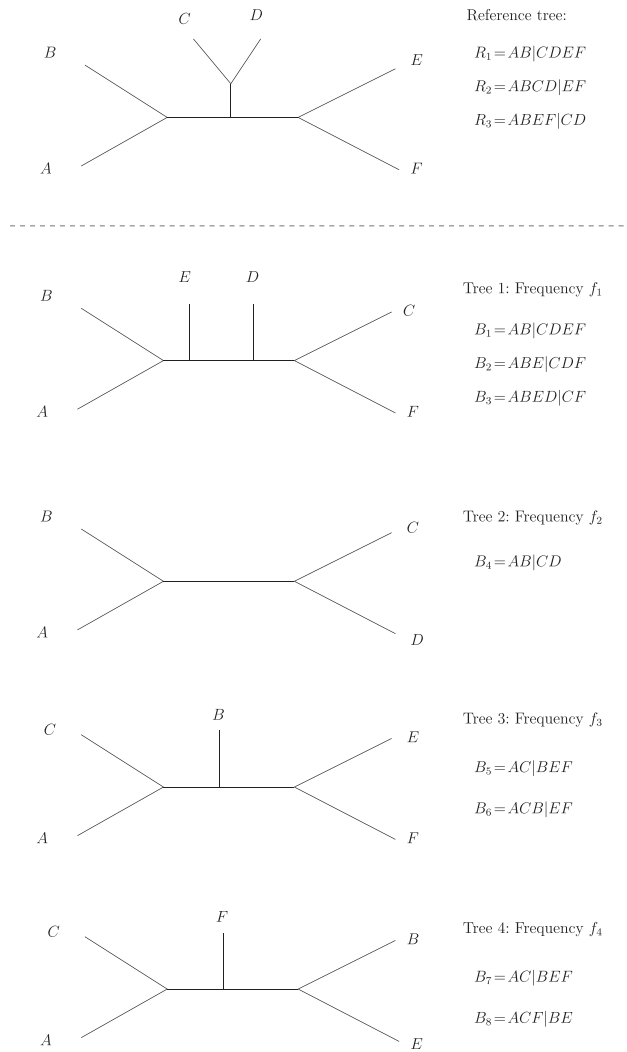


FIG. 3. Example tree set for IC calculations.

Given $B(b)$, $C(b)$, and Bip we can calculate the IC and ICA values as defined in equations (2) and (4) under the probabilistic or observed adjustment schemes. For the lossless adjustment scheme, the actual adjusted frequencies have to be calculated separately for each bipartition in $C(b)$ for all reference bipartitions b in this step.

Example

We now present a simple example for calculating the IC score under the different adjustment schemes. To this end, we analyze the tree set shown in figure 3. From these trees, we initially extract the following bipartition lists:

$$\begin{aligned}
 Bip &= \{AB|CDEF, ABE|CDF, ABED|CF, \\
 &\quad AB|CD, AC|BEF, ACB|EF, AC|BEF, \\
 &\quad ACF|BE\} \\
 P &= \{AB|CDEF, ABCD|EF, ABEF|CD, \\
 &\quad ABE|CDF, ABED|CF, AC|BEF, \\
 &\quad ACF|BE\}
 \end{aligned}$$

$$=: \{R_1, R_2, R_3, B_2, B_3, B_5, B_8\}.$$

We can now immediately calculate the probabilistic and observed support for bipartitions in P . As mentioned before, the lossless adjustment can only be calculated on sets of conflicting bipartitions. Let f_B^p and f_B^o be the probabilistic and observed support of a bipartition B . Further, let $f_B := (f_B^p, f_B^o)$.

Then, as B_1 in the figure is exactly identical to R_1 , and B_4 is a sub-bipartition of R_1 with two missing taxa, $f_{R_1}^p = f_1 + \frac{1}{4}f_2$. At the same time, R_1 is the only super-bipartition of B_1 . However, two other bipartitions, namely R_3 and B_2 , are super-bipartitions of B_4 . Thus, we obtain $f_{R_1}^o = f_1 + \frac{1}{3}f_2$. All other bipartitions in P can be scored analogously to obtain the following probabilistic and observed support value pairs:

$$\begin{aligned}
 f_{R_1} &= \left(f_1 + \frac{1}{4}f_2, f_1 + \frac{1}{3}f_2\right) \\
 f_{R_2} &= \left(\frac{1}{2}f_3, f_3\right) \\
 f_{R_3} &= \left(\frac{1}{4}f_2, \frac{1}{3}f\right)_2 \\
 f_{B_2} &= \left(f_1 + \frac{1}{4}f_2, f_1 + \frac{1}{3}f_2\right) \\
 f_{B_3} &= (f_1, f_1) \\
 f_{B_5} &= \left(\frac{1}{2}f_3 + \frac{1}{2}f_4, f_3 + f_4\right) \\
 f_{B_8} &= \left(\frac{1}{2}f_4, f_4\right).
 \end{aligned}$$

Given the above, we can now calculate the IC scores for bipartitions R_1, R_2 , and R_3 . Assume that we have the following frequencies, $f_1 = 3, f_2 = 4, f_3 = 6$, and $f_4 = 6$. Bipartition $R_1 = AB|CDEF$ conflicts with both, $B_5 = AC|BEF$, and $B_8 = ACF|BE$. However, since B_5 and B_8 do not conflict with each other, only one of them is included in the list of conflicting bipartitions. Since B_5 has a higher adjusted support than B_8 , we include B_5 . If b is the branch that gives rise to bipartition R_1 in the reference tree, then $C(b) = \{R_1, B_5\}$. Under the probabilistic adjustment scheme we obtain:

$$\begin{aligned}
 -IC(b) &= 1 + \frac{f_1 + \frac{1}{4}f_2}{(f_1 + \frac{1}{4}f_2) + (\frac{1}{2}f_3 + \frac{1}{2}f_4)} \log_2 \left(\frac{f_1 + \frac{1}{4}f_2}{(f_1 + \frac{1}{4}f_2) + (\frac{1}{2}f_3 + \frac{1}{2}f_4)} \right) \\
 &\quad + \frac{\frac{1}{2}f_3 + \frac{1}{2}f_4}{(f_1 + \frac{1}{4}f_2) + (\frac{1}{2}f_3 + \frac{1}{2}f_4)} \log_2 \left(\frac{\frac{1}{2}f_3 + \frac{1}{2}f_4}{(f_1 + \frac{1}{4}f_2) + (\frac{1}{2}f_3 + \frac{1}{2}f_4)} \right) \\
 &= 1 + \frac{3 + \frac{1}{4}4}{(3 + \frac{1}{4}4) + 3 + 3} \log_2 \left(\frac{3 + \frac{1}{4}4}{(3 + \frac{1}{4}4) + 3 + 3} \right)
 \end{aligned}$$

$$+ \frac{6}{(3 + \frac{1}{4}) + 6} + \log_2 \left(\frac{6}{(3 + \frac{1}{4}) + 6} \right) \approx 0.0290$$

The negative value of $IC(b)$ is due to the fact that, under the observed adjustment scheme, B_5 has a higher adjusted support than R_1 . Similarly, under the observed adjustment scheme we obtain:

$$\begin{aligned} -IC(b) &= 1 + \frac{f_1 + \frac{1}{3}f_2}{(f_1 + \frac{1}{3}f_2) + (f_3 + f_4)} \log_2 \left(\frac{f_1 + \frac{1}{3}f_2}{(f_1 + \frac{1}{3}f_2) + (f_3 + f_4)} \right) \\ &+ \frac{(f_3 + f_4)}{(f_1 + \frac{1}{3}f_2) + (f_3 + f_4)} \log_2 \left(\frac{(f_3 + f_4)}{(f_1 + \frac{1}{3}f_2) + (f_3 + f_4)} \right) \\ &= 1 + \frac{3 + \frac{1}{3}4}{(3 + \frac{1}{3}4) + 6 + 6} \log_2 \left(\frac{3 + \frac{1}{3}4}{(3 + \frac{1}{3}4) + 6 + 6} \right) \\ &+ \frac{6 + 6}{(3 + \frac{1}{3}4) + 6 + 6} + \log_2 \left(\frac{6 + 6}{(3 + \frac{1}{3}4) + 6 + 6} \right) \\ &\approx 0.1653. \end{aligned}$$

Given $C(b)$, we can now also compute the lossless adjusted support. We obtain a support of $f_1 + f_2 = 7$ for R_1 , and a support of $f_3 + f_4 = 6 + 6$ for B_5 . With these numbers at hand, we can calculate the IC score under lossless adjustment as:

$$\begin{aligned} -IC(b) &= 1 + \frac{7}{7 + 12} \log_2 \left(\frac{7}{7 + 12} \right) + \frac{12}{7 + 12} \log_2 \left(\frac{12}{7 + 12} \right) \\ &\approx 0.0505. \end{aligned}$$

This can be done analogously for bipartitions R_2 and R_3 . For $R_2 = ABCD|EF$ we observe three conflicting bipartitions: $B_2 = ABE|DCF$, $B_3 = ABED|CF$, and $B_8 = ACF|BE$. The corresponding frequencies for the above bipartitions are:

$$\begin{aligned} f_{R_2} &= \left(\frac{1}{2}f_3, f_3 \right) = (3, 6) \\ f_{B_2} &= \left(f_1 + \frac{1}{4}f_2, f_1 + \frac{1}{3}f_2 \right) = \left(4, 4 + \frac{1}{3} \right) \\ f_{B_3} &= (f_1, f_1) = (3, 3) \\ f_{B_8} &= \left(\frac{1}{4}f_4, f_4 \right) = \left(1 + \frac{1}{2}, 6 \right). \end{aligned}$$

Under the probabilistic support, we thus obtain $C(b) = \{R_2, B_2\}$, where b is the branch that corresponds to the reference bipartition with $R_2 = B(b)$. However, the set of conflicting bipartitions is different for the observed

adjustment scheme. Here, $C(b) = \{R_2, B_8\}$. As a consequence, we obtain the following IC scores:

$$\begin{aligned} -IC(b) &= 1 + \frac{3}{3 + 4} \log_2 \left(\frac{3}{3 + 4} \right) + \frac{4}{3 + 4} \log_2 \left(\frac{4}{3 + 4} \right) \\ &\approx 0.0148 \end{aligned}$$

under the probabilistic scheme, and

$$\begin{aligned} IC(b) &= 1 + \frac{6}{6 + 6} \log_2 \left(\frac{6}{6 + 6} \right) + \frac{6}{6 + 6} \log_2 \left(\frac{6}{6 + 6} \right) \\ &= 0 \end{aligned}$$

under the observed adjustment scheme. The adjusted frequencies for bipartitions R_2 and B_2 , under the lossless adjustment scheme, are $f_3 = 6$ and $f_1 + f_2 = 7$, respectively. Thus, the IC score is

$$\begin{aligned} -IC(b) &= 1 + \frac{6}{6 + 7} \log_2 \left(\frac{6}{6 + 7} \right) + \frac{7}{6 + 7} \log_2 \left(\frac{7}{6 + 7} \right) \\ &\approx 0.0043. \end{aligned}$$

For reference bipartition $R_3 = ABEF|CD$, there is only one conflicting bipartition in P , namely $B_3 = ABED|CF$. Thus, the calculation of $IC(b)$ is straight-forward (as before b is the branch inducing the reference bipartition: R_3). Under the probabilistic scheme we obtain:

$$\begin{aligned} -IC(b) &= 1 + \frac{1}{1 + 3} \log_2 \left(\frac{1}{1 + 3} \right) + \frac{3}{1 + 3} \log_2 \left(\frac{3}{1 + 3} \right) \\ &\approx 0.1887. \end{aligned}$$

Under the observed adjustment we get:

$$\begin{aligned} -IC(b) &= 1 + \frac{\frac{4}{3}}{\frac{4}{3} + 3} \log_2 \left(\frac{\frac{4}{3}}{\frac{4}{3} + 3} \right) + \frac{3}{\frac{4}{3} + 3} \log_2 \left(\frac{3}{\frac{4}{3} + 3} \right) \\ &\approx 0.1095. \end{aligned}$$

Finally, under the lossless adjustment scheme we obtain:

$$\begin{aligned} IC(b) &= 1 + \frac{4}{4 + 3} \log_2 \left(\frac{4}{4 + 3} \right) + \frac{3}{4 + 3} \log_2 \left(\frac{3}{4 + 3} \right) \\ &\approx 0.0148. \end{aligned}$$

Results and Discussion

For implementing the methods described in section “New Approaches: Adjusting the IC”, we used the framework of the RAXML (Stamatakis 2014) software (version 8.1.20).

The resulting proof of concept implementations and all data sets used for our experiments in sections “Accuracy of

the Methods” and “Empirical Data Analyses” (as well as the above example of section “Example”) are available at <https://github.com/Kobert/ICTC> (last accessed March 14, 2016). Usage of the software is explained there as well. The probabilistic and lossless distribution schemes are also included in the latest production level version of RAxML (<https://github.com/stamatak/standard-RAxML>, version 8.2.4, last accessed March 14, 2016).

We chose to omit the implementation for the observed support adjustment from the official RAxML release, as it does not seem to offer any advantages over the other two methods.

Accuracy of the Methods

In this section, we assess the accuracy of the proposed adjustment schemes. For this reason, we re-analyze the yeast dataset originally presented in Salichos and Rokas (2013). The comprehensive trees in the dataset contain 23 taxa. After applying some filtering techniques to the genes, we obtained a set of 1,275 gene trees. In the filtering step, genes are discarded if (i) the average sequence length is <150 characters, or (ii) more than half the sites contain indels after alignment. In Salichos and Rokas (2013), a slightly smaller subset of 1,070 trees is used.

To understand which adjustment scheme better recovers the underlying truth, we randomly prune taxa from this comprehensive tree set and compare the results between adjustment schemes. Evidently, a “good” adjustment scheme will yield IC and ICA values that are as similar as possible to the IC/ICA values of the comprehensive tree set. Thus, we consider the IC/ICA on the comprehensive tree set as the correct values.

For each of the 1,275 trees, we select and prune a random number of taxa. We draw the numbers of taxa to prune per tree from a geometric distribution with parameter p . We use a geometric distribution because the expectation is that thereby we will retain $p \cdot 1275$ comprehensive trees, for which 0 taxa have been pruned. An additional restriction is that each pruned tree must comprise at least four taxa to comprise at least one nontrivial bipartition. Given the number of taxa we wish to prune, we select taxa to prune uniformly at random using the *newick-tools* toolkit (<https://github.com/xflouris/newick-tools>, last accessed March 14, 2016).

Using different values for p we generate four partial tree sets. For each of these tree sets, we conduct analyses including all 1,275 trees (comprehensive and partial). We compare the results to the IC/ICA scores for 1,275 comprehensive trees.

Similarly, in a second round of experiments we compare the results obtained by removing *all* comprehensive trees from the tree sets to the reference IC and ICA scores for the comprehensive tree set.

To quantify which correction method yields more accurate results, we define the following distance/accuracy measure. Let $IC(b)$ be the inter node certainty for branch b if no taxa are pruned. Similarly, let $IC^A(b)$ be the IC for the same branch b under an adjustment scheme for a dataset *with* partial gene trees. The accuracy D of an adjustment scheme is then defined as:

$$D = \frac{1}{N} \sum_{\substack{b \text{ internal branch} \\ \text{in reference tree}}} \frac{||IC(b)| - |IC^A(b)||}{\max\{|IC(b)|, |IC^A(b)|\}}, \quad (9)$$

where N is the number of internal branches in the reference tree ($N = 20$ for our test dataset). The measure D is the average, weighted, component-wise difference between the two results. A low value of D indicates high similarity between the results. Furthermore, by definition, D ranges between 0 and 1.

Table 1 depicts this distance D for the different tree sets and adjustment schemes we tested. As we can see, the probabilistic and observed adjustment methods are more accurate than the lossless method.

In table 2, we observe that the probabilistic and observed adjustment schemes are not more accurate than the lossless method for tree sets that only contain partial gene trees. From table 3, it also becomes evident that the lossless adjustment scheme tends to overestimate the IC and ICA values less frequently than the two alternative methods.

Another important observation is that, in most cases, accuracy decreases for any adjustment scheme when analyzing tree sets that exclusively contain partial gene trees. Intuitively, this can be explained by the fact that (i) we have less trees to base our analysis on, and (ii) only the reference bipartitions now contain all 23 taxa. Since a partial bipartition distributes its frequency among all its super-bipartitions in P , it is intuitively clear that bipartitions with more taxa are more likely to accumulate distributed frequencies from more sub-bipartitions than bipartitions with fewer taxa. Conflicting bipartitions (with <23 taxa) are thus not assigned sufficient support to compete with the reference bipartitions. This behavior can be observed in table 3. There, we display the numbers of times the certainty in a branch under the different adjustment schemes was higher than the certainty obtained from the comprehensive trees.

Empirical Data Analyses

In this section, we present an additional, yet different, analysis of the above yeast dataset. We do not only use the 1,275 comprehensive trees, but now also include additional partial gene trees. After applying the aforementioned filters again (see section “Accuracy of the Methods”), the tree set comprises 2,494 trees. The comprehensive trees are the same 1,275 trees as in section “Accuracy of the Methods”. The remaining 1,219 trees are partial trees. The number of taxa in these partial trees ranges from 4 to 22 (see fig. 4 for the exact distribution of taxon numbers over partial gene trees). Unlike in section “Accuracy of the Methods”, these partial trees are not simulated, but the result of phylogenetic analyses on the corresponding gene alignments.

In addition, we also analyze a gene tree set from avian genomes. The data were previously published in Jarvis et al. (2015). Here, we analyze a subset of 2,000 gene trees with up to 48 taxa. Of these trees, 500 contain the full 48 taxa while the remaining trees contain either 47 taxa (500 trees) or 41–

Table 1. Differences D in IC/ICA Scores, between the Scores Calculated by the Adjustment Schemes and the Reference Scores for the Comprehensive Tree Set.

	IC				ICA			
	$P = 0.1$	$P = 0.3$	$P = 0.5$	$P = 0.7$	$P = 0.1$	$P = 0.3$	$P = 0.5$	$P = 0.7$
Probabilistic	0.31	0.20	0.18	0.08	0.26	0.18	0.18	0.12
Observed	0.42	0.27	0.15	0.07	0.39	0.25	0.19	0.08
Lossless	0.65	0.44	0.24	0.17	0.60	0.44	0.28	0.15

Table 2. Differences D in IC/ICA Scores, between the Pruned Tree Sets *Only* Containing Partial Gene Trees and the Reference Values.

	IC				ICA			
	$P = 0.1$	$P = 0.3$	$P = 0.5$	$P = 0.7$	$P = 0.1$	$P = 0.3$	$P = 0.5$	$P = 0.7$
Probabilistic	0.50	0.52	0.53	0.53	0.47	0.48	0.50	0.50
Observed	0.50	0.51	0.53	0.53	0.45	0.48	0.50	0.49
Lossless	0.61	0.48	0.50	0.52	0.46	0.43	0.47	0.49

Table 3. Fraction of Branches for which the Adjusted IC/ICA Scores Are Higher than the IC/ICA Reference Scores.

	IC				ICA			
	$p = 0.1$	$p = 0.3$	$p = 0.5$	$p = 0.7$	$p = 0.1$	$p = 0.3$	$p = 0.5$	$p = 0.7$
All trees								
Probabilistic	0.4	0.35	0.35	0.15	0.25	0.25	0.2	0.15
Observed	0.15	0.3	0.4	0.2	0.2	0.2	0.2	0.1
Lossless	0.1	0.25	0.15	0.25	0.2	0.2	0.25	0.1
Partial trees								
Probabilistic	0.8	0.8	0.85	0.85	0.8	0.8	0.85	0.85
Observed	0.65	0.75	0.8	0.85	0.65	0.75	0.8	0.85
Lossless	0.3	0.65	0.75	0.8	0.25	0.65	0.75	0.8

NOTE.—The top table contains values for all three adjustment schemes if all trees (comprehensive and simulated partial) are included in the analysis. The bottom table shows the values for all three methods if *only* partial trees are analyzed.

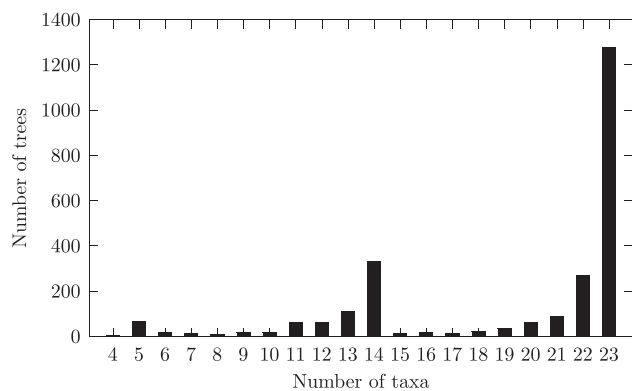


Fig. 4. Distribution of taxon number over trees in the yeast data.

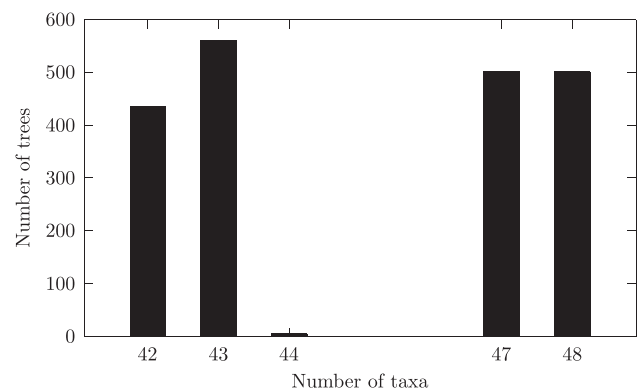


Fig. 5. Distribution of taxon number over trees in the avian data.

43 taxa (1,000 trees). The taxon number distribution over trees is provided in figure 5.

First, we report the results for the yeast dataset. We present the IC and ICA scores for all internal branches under the three adjustment schemes and compare them to the scores obtained for the subset of comprehensive trees. Figure 6 shows the topology of the reference tree. Tables 4 and 5 show the respective IC and ICA values.

The values for the individual IC and ICA scores can be higher for the lossless adjustment scheme than for the probabilistic adjustment scheme and the observed adjustment scheme. However, the relative TC and TCA values suggest

that the lossless adjustment attributes a lower certainty to individual bipartitions as well as the entire tree. The actual values are 0.298 for the relative TC score and 0.322 for the relative TCA score for the lossless adjustment; 0.389 and 0.399 for the probabilistic adjustment; and 0.339 and 0.364 for the observed adjustment scheme.

By comparing the 23-taxa yeast species tree values without adjustment against the three approaches that contain both complete and missing data (probabilistic, observed, and lossless), we can conclude that, overall, the values appear very similar and they tend to provide additional support for the reference topology. Among the adjustment strategies, the

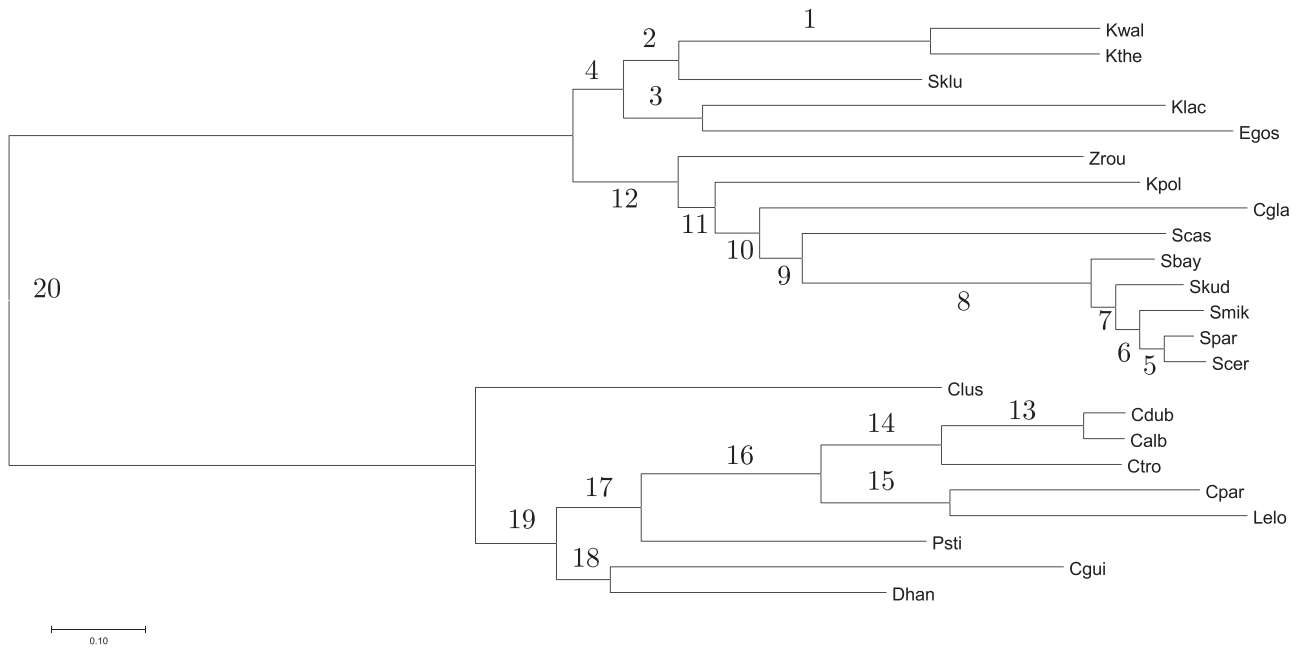


FIG. 6. Bipartition numbers corresponding to the presented tables, for the yeast data set. Taxon key: Kwal: *Kluyveromyces waltii*, Kthe: *Kluyveromyces thermotolerans*, Sklu: *Saccharomyces kluyveri*, Klac: *Kluyveromyces lactis*, Egos: *Eremothecium gossypii*, Zrou: *Zygosaccharomyces rouxii*, Kpol: *Kluyveromyces polysporus*, Cgla: *Candida glabrata*, Scas: *Saccharomyces castellii*, Sbay: *Saccharomyces bayanus*, Skud: *Saccharomyces kudriavzevii*, Smik: *Saccharomyces mikatae*, Spar: *Saccharomyces paradoxus*, Scer: *Saccharomyces cerevisiae*, Clus: *Candida lusitanae*, Cdub: *Candida dubliniensis*, Calb: *Candida albicans*, Ctro: *Candida tropicalis*, Cpar: *Candida parapsilosis*, Lelo: *Lodderomyces elongisporus*, Psti: *Pichia stipitis*, Cgui: *Candida guilliermondii*, Dhan: *Debaryomyces hansenii*

Table 4. IC Scores for All Nontrivial Bipartitions Multiplied by 100 and Rounded Down.

Taxa	Adjustment	Bip. 1	2	3	4	5	6	7	8	9	10	11	12	13	14	15	16	17	18	19	20
23 Taxa	None	95	29	9	3	48	27	5	95	2	14	1	56	94	75	71	71	7	1	<1	99
4–23 Taxa	Probabilistic	89	28	8	3	46	28	6	91	2	15	1	52	92	72	65	70	7	2	<1	92
4–23 Taxa	Observed	89	12	12	3	52	24	4	58	1	14	2	36	91	69	64	69	7	2	1	57
4–23 Taxa	Lossless	82	2	15	2	39	26	5	41	<1	10	3	15	89	61	56	65	7	1	<1	68

NOTE—The bipartition labels are shown in figure 6. The dataset can either consist of only full trees (23 taxa), or partial and full trees (4–23 taxa).

Table 5. ICA Scores for All Nontrivial Bipartitions Multiplied by 100 and Rounded Down.

Taxa	Adjustment	Bip. 1	2	3	4	5	6	7	8	9	10	11	12	13	14	15	16	17	18	19	20
23 Taxa	None	95	23	7	8	48	25	14	95	3	12	2	45	94	75	71	71	7	8	9	98
4–23 Taxa	Probabilistic	89	21	6	13	46	26	14	91	3	11	1	38	92	72	60	70	25	7	11	92
4–23 Taxa	Observed	89	15	9	12	52	24	12	58	2	11	11	34	91	69	59	69	24	7	11	57
4–23 Taxa	Lossless	82	13	10	7	39	27	13	46	3	9	8	29	89	61	49	65	7	5	5	68

NOTE—The bipartition labels are shown in figure 6. The datasets again either consist of only full trees (23 taxa), or partial and full trees (4–23 taxa).

probabilistic adjustment yields values that are closest to those obtained by the analysis of only comprehensive trees. This is expected, since for the probabilistic adjustment, smaller bipartitions contribute less to the overall scores than larger bipartitions. Full bipartitions/trees are thus affecting the outcome most under this adjustment scheme.

Previous ambiguous bipartitions, concerning for example the placement of species like *Saccharomyces castellii* (conf. bipartitions 9 and 8), *Candida lusitanae* (conf. bipartitions 20 and 19), *Debaryomyces hansenii* (bipartition 18), and *Kluyveromyces lactis* (bipartition 3), remain equally uncertain, showing very similar (close to 0) IC and ICA values.

The split between the *Candida* and *Saccharomyces* clade (bipartition 20) is well documented in the literature (Fitzpatrick et al. 2006; Dujon 2010; Salichos and Rokas 2013). The same holds for bipartition 8, the *Saccharomyces* ‘sensu stricto’ clade (Rokas et al. 2003; Kurtzman and Robnett 2006; Salichos and Rokas 2013). Thus, a high certainty for these bipartitions is expected. As we can see in table 4, the analysis of only comprehensive trees supports these two bipartitions with IC values of 0.99 for bipartition 20, and 0.95 for bipartition 8. However, the generally conservative lossless distribution approach, as well as the observed support adjustment scheme, provide reduced certainty for these two

Table 6. IC Scores for All Nontrivial Bipartitions Multiplied by 100 and Rounded Down.

Taxa	Adjustment	Bip. 1	2	3	4	5	6	7	8	9	10	11	12	13	14	15	16	17	18	19	20
23 Taxa	None	95	29	9	3	48	27	5	95	2	14	1	56	94	75	71	71	7	1	<1	99
4–22 Taxa	Probabilistic	93	64	61	58	72	66	59	85	39	46	43	64	95	77	83	78	56	49	47	93
4–22 Taxa	Observed	89	23	58	36	80	75	70	80	1	1	<1	20	93	79	82	78	54	13	16	43
4–22 Taxa	Lossless	80	24	58	12	66	57	32	68	24	12	12	2	88	54	42	49	43	12	38	7

NOTE—The bipartition labels are shown in figure 6. Here, the dataset only contains trees with partial taxon sets.

Table 7. ICA Scores for All Nontrivial Bipartitions Multiplied by 100 and Rounded Down.

Taxa	Adjustment	Bip. 1	2	3	4	5	6	7	8	9	10	11	12	13	14	15	16	17	18	19	20
23 Taxa	None	95	23	7	8	48	25	14	95	3	12	2	45	94	75	71	71	7	8	9	98
4–22 Taxa	Probabilistic	93	64	54	51	72	66	59	85	40	46	34	58	95	77	83	78	56	43	45	93
4–22 Taxa	Observed	89	23	48	33	80	75	70	80	17	20	18	20	93	79	82	78	54	29	24	43
4–22 Taxa	Lossless	80	27	58	24	66	57	29	68	24	11	12	2	88	54	42	49	43	12	38	22

NOTE—The bipartition labels are shown in figure 6. Again, the dataset only contains trees with partial taxon sets.

Table 8. IC and ICA Scores for Different Subsets of the Data Set for the Probabilistic and Lossless Distribution Schemes.

Taxa	Adjustment	TC	TCA
48 taxa	None	−3.14	−3.17
41–48 Taxa	Probabilistic	−2.44	7.72
41–48 Taxa	Lossless	−5.05	−1.35
41–47 Taxa	Probabilistic	9.34	15.75
41–47 Taxa	Lossless	6.01	6.01

bipartitions; the divergence of *Candida* from the *Saccharomyces* clade (bipartition 20) is, for the lossless distribution scheme, depicted with an IC value of 0.68, and the *Saccharomyces* ‘*sensu stricto*’ clade (bipartition 8) obtains an IC score of 0.41; the observed adjusted support for these bipartitions is reduced to 0.57 for bipartition 20, and 0.58 for bipartition 8. The probabilistic adjusted IC values for the branches inducing these splits are 0.92 for bipartition 20, and 0.91 for bipartition 8. A similar behavior can be seen for the ICA values.

In addition, under the lossless adjustment, the previously resolved placement of *Zygosaccharomyces rouxii* (a clade with relatively low gene support frequency of 62% in Salichos and Rokas 2013) remains unresolved with IC and ICA values of 0.15 and 0.29 respectively.

Next, we analyze the behavior of the adjustment schemes if only partial trees are provided. See tables 6 and 7.

The relative TC (and TCA) that result from these calculations are 0.668 (0.651) for the probabilistic distribution, 0.499 (0.532) for the observed distribution, and 0.394 (0.407) for the lossless distribution scheme. The relative TC and TCA without correction (obtained from the values shown in tables 4 and 5), for trees with full taxon sets, are 0.406 and 0.409. The higher TC and TCA values obtained for the former two adjustment methods suggest that these approaches are not providing the conflicting bipartitions with a sufficiently adjusted support to compare with the reference bipartition. The reference bipartitions always contain 23 taxa for this dataset. Now however, no conflicting bipartition can have that many taxa, as comprehensive trees are not included in the above analysis of only partial trees.

Analyzing the second dataset with a total of 2,000 trees yields similar results. See table 8 for the TC and TCA values for this dataset. Again, the values of the analysis restricted to a comprehensive tree set are compared with the results obtained when including partial gene trees, and restricting the analysis to partial gene trees. Specifically, we see that the probabilistic support for analyzing the full dataset, of 2,000 trees, again gives TC values more closely in accordance with the values obtained for the analysis restricted to the 500 full trees than the lossless adjustment scheme.

Here, the tree set does not support the reference tree well (as evident by the negative TC). At the same time, the TCA under the probabilistic adjustment scheme is actually positive.

For this dataset, the discrepancy can be explained by the fact that the most frequent conflicting bipartitions are not supported by much more than the second most supported conflicting bipartition. If the support for the reference bipartition is much smaller than that of the most frequent conflicting bipartition, the internode-certainty will approach -1 . Let the support for the most frequent conflicting bipartition be f . As the support of the second most frequent conflicting bipartition approaches f , the ICA value tends toward 0.0. If the reference bipartition is the bipartition with the highest adjusted support in $C(b)$, this effect is less pronounced.

For the analysis of partial bipartitions only, we again see that the conflicting bipartitions are not as well supported under any tested adjustment scheme. Again, the lossless adjustment scheme yields decreased certainty. Thus, we advocate that this adjustment scheme is used if one wants to reduce the risk of overestimating certainties.

Conclusion

We have seen that the inclusion of partial trees into any certainty estimation is beneficial, as the partial trees do contain information that is not necessarily contained in the full/comprehensive trees. This is evident by the different TC and TCA scores we obtained for the empirical datasets.

Further, the selection of the most appropriate adjustment scheme depends on the data at hand. The lossless adjustment

scheme is most appropriate for tree sets that do not contain any comprehensive trees, since it yields more conservative certainty estimates. For gene tree sets that contain comprehensive as well as partial trees, the probabilistic and observed adjustment schemes yield results that are more accurate with respect to the reference IC and ICA values.

In general, we advocate the inclusion of (some) comprehensive trees in any analysis that also includes partial trees. This is motivated by the fact that the pruned datasets that contained comprehensive trees generally yielded more accurate results than tree sets not containing comprehensive trees.

Acknowledgments

K.K. and A.S. thank the Klaus Tschira Foundation for financial support. This work was also partially supported by the National Science Foundation (DEB-0844968 and DEB-1442113 to A.R.).

References

- Bryant D. 2003. A classification of consensus methods for phylogenies. In: Janowitz M, Lapointe F-J, McMorris F, Mirkin B, Roberts F, editors. *Bioconsensus*, DIMACS. AMS, p. 163–184.
- Dujon B. 2010. Yeast evolutionary genomics. *Nat Rev Genet.* 11(7):512–524.
- Efron B, Halloran E, Holmes S. 1996. Bootstrap confidence levels for phylogenetic trees. *Proc Natl Acad Sci U S A.* 93(23):13429–13434.
- Felsenstein J. 1985. Confidence limits on phylogenies: an approach using the bootstrap. *Ann Stat.* 39:783–791.
- Fitzpatrick D, Logue M, Stajich J, Butler G. 2006. A fungal phylogeny based on 42 complete genomes derived from supertree and combined gene analysis. *BMC Evol Biol.* 6(1):99.
- Garey MR, Johnson DS. 1990. *Computers and intractability; a guide to the theory of NP-completeness*. New York: W. H. Freeman & Co..
- Hejnal A, Obst M, Stamatakis A, Ott M, Rouse GW, Edgecombe GD, Martinez P, Baguña J, Bailly X, Jondelius U, et al. 2009. Assessing the root of bilaterian animals with scalable phylogenomic methods. *Proc R Soc Lond B: Biol Sci.* 276:4261–4270.
- Jarvis E, Mirarab S, Aberer A, Li B, Houde P, Li C, Ho S, Faircloth B, Nabholz B, Howard J, et al. 2015. Phylogenomic analyses data of the avian phylogenomics project. *GigaScience* 4(1):4.
- Kurtzman CP, Robnett CJ. 2006. Phylogenetic relationships among yeasts of the ‘Saccharomyces complex’ determined from multigene sequence analyses. *FEMS Yeast Res.* 3(4):417–432.
- Phillips C, Warnow TJ. 1996. The asymmetric median tree a new model for building consensus trees. *Disc Appl Math.* 71(13): 311–335.
- Rokas A, Williams BL, King N, Carroll SB. 2003. Genome-scale approaches to resolving incongruence in molecular phylogenies. *Nature* 425(6960): 798–804.
- Salichos L, Rokas A. 2013. Inferring ancient divergences requires genes with strong phylogenetic signals. *Nature* 497:327–331.
- Salichos L, Stamatakis A, Rokas A. 2014. Novel information theory-based measures for quantifying incongruence among phylogenetic trees. *Mol Biol Evol.* 31:1261–1271.
- Shannon CE. 1948. A mathematical theory of communication. *Bell Syst. Tech. J.* 27:379–423.
- Smith S, Moore M, Brown J, Yang Y. 2015. Analysis of phylogenomic datasets reveals conflict, concordance, and gene duplications with examples from animals and plants. *BMC Evol Biol.* 15(1):150.
- Stamatakis A. 2014. Raxml version 8: a tool for phylogenetic analysis and post-analysis of large phylogenies. *Bioinformatics* 30:1312–1313.