

# The antiestrogenic effects of black cohosh on BRCA1 and steroid receptors in breast cancer cells

Michael Crone<sup>1,2</sup>  
Kelly Hallman<sup>1,2</sup>  
Victoria Lloyd<sup>1,2</sup>  
Monica Szmyd<sup>1,2</sup>  
Briana Badamo<sup>1,2</sup>  
Mia Morse<sup>1,2</sup>  
Sumi Dinda<sup>1,2</sup>

<sup>1</sup>Department of Biomedical Diagnostic and Therapeutic Sciences, School of Health Sciences, Oakland University, Rochester, MI 48309-4476, USA; <sup>2</sup>Institute for Stem Cell and Regenerative Medicine and Center of Biomedical Sciences, Oakland University, Rochester, MI 48309-4476, USA

**Background:** Black cohosh (BC) is an herbal remedy often used by women to treat symptoms associated with menopause. Research has shown that the molecular activity of BC is associated with estrogen receptor alpha (ER- $\alpha$ ) regulation. Progesterone receptor (PR) expression is found to be consistent with ER expression and mutations in the *BRCA1* gene, a tumor-suppressor gene, are known to be responsible for about 40%–45% of hereditary breast cancers.

**Purpose:** The objective of this study was to determine the effects of BC alone, as well as in combination with hormones and antihormones, on cell viability and expression of ER- $\alpha$ , PR, and BRCA1 in both T-47D and MCF-7 cell lines.

**Methods:** Cells were cultured in charcoal-stripped serum prior to their treatment and subsequent protein extraction. Western blot analyses were performed following a Bio-Rad Bradford protein assay and SDS-PAGE gel electrophoresis, with ECL luminescence and Image Studio Lite software. Cellular viability assays were performed using propidium iodine (PI) staining, and the distribution of fluorescent structures was evaluated through confocal microscopy. RT-qPCR analysis was performed on extracted cellular RNA. All statistical analyses were performed using SPSS software, and data was subjected to Kruskal-Wallis testing, followed by post-hoc analysis using the Mann-Whitney U-test to determine the statistical significance of all findings.

**Results:** Western blot analysis displayed significant alterations of ER- $\alpha$ , PR, and BRCA1 protein levels after 24-hour treatment with 80–500  $\mu$ M BC. BC displayed a concentration-dependent decrease on ER- $\alpha$  and BRCA1 expression, with an 87% reduction of ER- $\alpha$  expression and a 43% of BRCA1 expression in T-47D cells compared to control. After six days of treatment with 400  $\mu$ M BC, a 50% decrease in cell proliferation was observed. Following 24 hours of co-treatment with 400  $\mu$ M BC and 10 nM E<sub>2</sub>, ER- $\alpha$  was downregulated by 90% and BRCA1 expression was reduced by 70% compared to control. The expression of PR, following the same treatment, exhibited similar effects. The proliferative effect of E<sub>2</sub> was reduced in the presence of BC.

**Conclusion:** Black Cohosh demonstrates substantial anti-cancer properties, and this study may significantly aid in the understanding of the molecular effects of BC on ER- $\alpha$ , PR, and BRCA1 in breast cancer cells.

**Keywords:** tumor suppressor, MCF-7, T-47D, antitumor agent, natural anticancer, cancer treatment

Correspondence: Sumi Dinda  
School of Health Sciences, Oakland University, 433 Meadowbrook Road, Rochester, MI 48309-4476, USA  
Tel +1 248 364 8676  
Fax +1 248 364 8657  
Email sdinda@oakland.edu

## Introduction

Breast cancer is one of the most common causes of cancer death for women in the USA but its impact is worldwide, calling for progressive research, treatment, and prevention strategies. In 2012 alone, over 1.7 million people were diagnosed with breast cancer, and it remains in the top three of most common cancers in the world.<sup>1,2</sup> Breast cancer mortality rates have decreased in both North America and the European Union over

the past several years, perhaps partly due to an increase in research of the mechanisms of breast cancer molecular targets and potential therapeutic agents.<sup>1</sup>

Estrogen is the hormone primarily responsible for the development and regulation of female reproductive organs. The most prevalent form of estrogen in the female body is known as 17 $\beta$ -estradiol, or E<sub>2</sub>. This steroid hormone has been shown in previous laboratory studies, as well as studies from our own laboratory,<sup>3</sup> to exert proliferative effects on the hormone-dependent T-47D and MCF-7 breast cancer cell lines.<sup>3-6</sup>

The primary receptor for E<sub>2</sub> is known as estrogen receptor alpha, or ER- $\alpha$ . Only 10% of normal breast epithelium is positive for this receptor, but it is present in approximately 50%–80% of breast tumors; it is this presence that drastically increases the mitotic activity of breast tumors in patients with mutated tumor-suppressor genes.<sup>7,8</sup> Studies have shown that abnormal ER- $\alpha$  expression is involved in the development and progression of hormone-dependent breast cancer.<sup>8,9</sup> Alterations in the progesterone receptor (PR), the receptor for the female hormone progesterone, have also been shown to be involved in the progression of hormone-dependent breast cancer. These PR alterations are often consistent with those of ER- $\alpha$ .<sup>9</sup>

Abnormalities in BRCA1, a tumor-suppressor gene, are shown to be associated with many hereditary breast cancers. The BRCA1 gene is found in the wild-type form in both T-47D and MCF-7 cell lines; it is, therefore, valuable to examine the effects of alternatives for hormone replacement therapy on this gene and its corresponding protein.<sup>10,11</sup>

The T-47D cell line used in these experiments was isolated from ductal carcinoma in situ (DCIS) of the breast of a 54-year-old woman.<sup>12,13</sup> The progression to invasive breast carcinoma (IBC) involves several stages; DCIS is one of the later stages of IBC. DCIS refers to an intraductal neoplastic proliferation of epithelial cells that has not yet penetrated the basement membrane of the breast stroma. The other cell line used in these studies, MCF-7, was also isolated from infiltrating ductal carcinoma of the breast from a postmenopausal woman; MCF-7 cells are also sensitive to estrogen.<sup>6,14,15</sup>

Black cohosh (BC) is a herbal remedy used by menopausal women to alleviate hot flashes, emotional fluctuations, sleep disturbances, and other complaints associated with menopause.<sup>16</sup> BC is isolated from the rhizomes of *Cimicifuga racemosa*, a plant native to North America. It has been known to demonstrate astringent, diuretic, antidiarrheal, and antioxidant properties. BC has been used across cultures for centuries as a remedy for a variety of health complaints including as an anti-inflammatory agent by Native Americans.<sup>17-20</sup>

Conventional hormone replacement therapy, used to treat menopausal symptoms, has recently been found to increase

the risk of developing breast cancer or endometrial cancer. Therefore, herbal alternatives such as BC are now more commonly used as menopausal treatments.<sup>17-20</sup>

Recent studies have demonstrated the growth-inhibitory effects of BC on human breast cancer cells.<sup>21</sup> This project attempts to help determine whether BC has estrogenic or antiestrogenic effects, as well as verify its potential as a breast cancer treatment. It also examines the effects of BC on PR and BRCA1. The chemical structure of BC is found to have carbohydrate-based modifications called triterpene glycosides; the BC used in these studies has a 2.5% triterpene-glycoside composition (NatureX, Avignon, France). This study will contribute to a better understanding of the effects of herbal remedies, which are becoming more commonly used as a menopausal treatment, on breast cancer cells.

## Materials and methods

### Cell culture and treatment

The hormone-dependent T-47D and MCF-7 breast cancer cell lines (ATCC<sup>®</sup> HTB-133 TM; ATCC, Manassas, VA, USA) were regularly cultured at 37°C with 5% CO<sub>2</sub>, which simulates the optimum conditions of the human body. The T-47D cells were cultured in a media (RPMI 1640) (Hyclone, Logan, UT, USA) supplemented with 10% FBS containing growth factors and exogenous steroids. This RPMI media contained 2 mM L-glutamine, 25 mM HEPES, 24 mM sodium bicarbonate, 0.5% 100 $\times$  nonessential amino acids, 100 U/mL penicillin, 0.1 mg/mL streptomycin, 0.25 mg/mL amphotericin B (Hyclone), and 0.14 IU/mL insulin (Sigma, St. Louis, MO, USA) with 10% (v/v) FBS (Hyclone). The media are also known as 10% whole serum, and it assisted with cell growth and cellular proliferation. The MCF-7 cells were cultured in Eagle's minimum essential medium (Corning Cellgro), which contained 1.5 g/L sodium bicarbonate, nonessential amino acids, L-glutamine, and sodium pyruvate. The cells of each cell line were then plated in six-well plates (200,000 cells for T-47D and 240,000 cells for MCF-7) and the medium was changed to a 5% dextran-coated charcoal-stripped fetal bovine serum (DCC-FBS) (5% stripped serum) to avoid cellular exposure to endogenous steroids in the FBS. This stripped serum was used in order to deplete the cells of endogenous steroids and growth factors, thus allowing the cells to be at their basal metabolic rate at the time of treatment, confirming that any effects seen on the cells and the cells' proteins are caused exclusively by the treatments they receive and not any other components of the culturing media. The cells were cultured in this charcoal-stripped serum for 6 days. On the sixth day, the cells in the six-well plates were treated with 2  $\mu$ L of ligands for 24 hours.<sup>22</sup> Control groups

were treated with dimethyl sulfoxide (DMSO), the solvent used for BC treatments. Varying concentrations (80–500  $\mu\text{M}$ ) of BC were used in the concentration-dependent studies, while estrogens and antiestrogens were combined with 400  $\mu\text{M}$  BC for the hormone studies. For estrogen treatments 10 nM  $\text{E}_2$  was used. As a pure estrogen antagonist treatment 1  $\mu\text{M}$  ICI (ICI 182, 780) was used, and 1  $\mu\text{M}$  TAM (Tamoxifen) was used as a selective estrogen receptor modulator treatment.<sup>22,23</sup>

## Protein extraction and quantification

The cellular proteins were extracted by the addition of radioimmunoprecipitation assay buffer obtained from Santa Cruz Biotechnology (Dallas, TX, USA). The cells were then centrifuged at a speed of  $15,000 \times g$  for 15 minutes at  $4^\circ\text{C}$ . After centrifugation, the protein supernatant was separated and used to prepare a protein assay based on the Bradford method (Bio-Rad Kit; Bio-Rad, Hercules, CA, USA). The Bradford method (Bio-Rad Kit) allowed for the quantification and normalization of the protein in each extracted sample by use of a spectrophotometer.<sup>24</sup>

## SDS-PAGE and Western blot analyses

The extracted proteins were subjected to SDS-PAGE. The protein of interest was then isolated using Western blot analysis. To denature the sample to its primary structure, the protein supernatant was heated for 3 minutes at  $85^\circ\text{C}$ . Equal amounts of protein were then loaded into a 7.5%–12.5% polyacrylamide gel. Proteins that were run on these gels were transferred to an Immobilon polyvinylidene fluoride membrane (Millipore, Bedford, MA, USA) by the process of electroblotting. To begin probing, 5% nonfat dry milk was used to block nonspecific proteins. The membranes were then probed with the corresponding primary and secondary antibodies for each protein of interest. For ER- $\alpha$ , anti-ER monoclonal antibody (1:2000) from Santa Cruz Biotechnology (Santa Cruz, CA, USA) was used. To detect the primary antibody, secondary goat-anti-mouse IgG<sub>2a</sub> antibody (1:2000) was used. Actin bands were probed by anti-actin (monoclonal antibody clone C4) (Millipore, Bedford, MA, USA). ER- $\alpha$ , PR-A/B, and BRCA-1 levels were normalized to protein levels of the evolutionarily conserved actin-protein according to the manufacturer's protocol. Anti-PR (monoclonal) (1:2000) and anti-BRCA1 (monoclonal) (1:2000) primary antibodies were obtained from Cell Signaling (Danvers, MA, USA) and detected by secondary goat-anti-rabbit antibodies. All secondary antibodies were obtained from Jackson Laboratories (Bar Harbor, ME, USA). The specific band for each protein of interest was then visualized by the enhanced chemiluminescence method according to the

instructions from Amersham (GE Healthcare Biosciences, Piscataway, NJ, USA). The protein bands were visualized using the Chemi-Doc XRS + imaging system (Bio-Rad). The Western blots were subjected to quantification of the protein band density using the Image Studio Lite program, version 3.1 (LI-COR Biosciences, Lincoln, NE, USA).<sup>24</sup>

## Cell viability assay

A cell viability assay shows the number of live cells in a total population after treatments with ligands, at varying concentrations, for 6 days, with treatments administered every 2 days. The cell viability studies were cultured in 12-well plates (30,000 cells per well). Throughout the experiment, the medium was replenished every 48 hours. The plates were fed with 10% whole serum for the first 2 days to ensure confluency. The cells were then incubated in the presence of stripped serum for 6 days and quantified on the sixth day using the Cellometer Vision CBA software (Nexcelom Bioscience LLC). This was done by propidium iodide staining, which fluorescently tags dead cells. The number of dead cells versus total cells was quantified in order to calculate cell viability.<sup>24</sup>

## Immunofluorescence and confocal microscopy

Cells were plated as described under the “Cell viability assays” section. Immunolabeling was performed for BRCA1 in T-47D cells. The distribution of three-dimensional fluorescent structures was analyzed using a Nikon Digital Eclipse C1 plus confocal microscope and differential interference contrast (DIC) images were taken in parallel. NIS Elements AR software (Nikon Instruments, Melville, NY, USA) was used for image analysis.<sup>24</sup>

## Reverse transcription quantitative real-time PCR (RT-qPCR)

Total RNA was extracted from T-47D and MCF-7 cells using “Trizol” reagent (Invitrogen, Life Technologies, Waltham, MA, USA) per manufacturer's protocol. The gDNA-free total RNA was reverse transcribed using iScript cDNA Synthesis Kit according to Life Sciences Technology. Prior to RT-qPCR analysis, cDNA was diluted tenfold in PCR-grade water. RT-qPCR was performed in a 96-well format in the Bio-Rad CFX384 Real Time System. The assay included NTC, RT(-), and NRT controls to detect reagent contamination and presence of genomic DNA. For data analysis, the quantification cycle (Cq) value was determined and specific gene expression normalized to endogenous control using  $\Delta\Delta\text{Cq}$  method. Expressions of ACTB and HPRT1 were set as the reference genes. The data were analyzed using Bio-Rad CFX Manager.

ESR1 mRNA levels were determined by RT-qPCR. The cells were treated in the presence or absence of 100  $\mu\text{M}$  BC,  $\text{E}_2$ , and ICI for 24 hours. Results are shown as the mean  $\pm$  standard error of the mean (SEM) of at least three independent experiments with three replicates in each experiment.<sup>24</sup>

## Statistical analyses

The results are expressed as mean  $\pm$  SEM. Statistical significance was determined by the Kruskal–Wallis test, followed by post hoc analysis using the Mann–Whitney U test. Differences are considered significant at  $P < 0.05$ . In all figures: \* $P < 0.05$ ; \*\* $P < 0.01$ ; \*\*\* $P < 0.001$ . Statistical analyses were carried out using SPSS for Windows version 11.5 (SPSS Inc., Chicago, IL, USA).<sup>24</sup>

## Results

### Concentration-dependent effects of BC on ER- $\alpha$ , PR, and BRCA1 protein expression

Western blot analysis revealed a concentration-dependent decrease in ER- $\alpha$  protein expression with treatments of 80–500  $\mu\text{M}$  BC in both cell lines. Actin, a housekeeping protein consistently expressed under both normal and pathologic conditions, was probed as a control to confirm equivalence in protein loading among wells. An 87% decrease in ER- $\alpha$  expression in T-47D cells was observed with treatment of 400  $\mu\text{M}$  BC compared to control (Figure 1A), and a 49% decrease in ER- $\alpha$  expression with treatment of 400  $\mu\text{M}$  BC compared to control in MCF-7 cells (Figure 1B). Similar effects were observed with both PR and BRCA1 expression in both cell lines, also displaying 400  $\mu\text{M}$  as the optimal concentration. In T-47D cells, 400  $\mu\text{M}$  BC

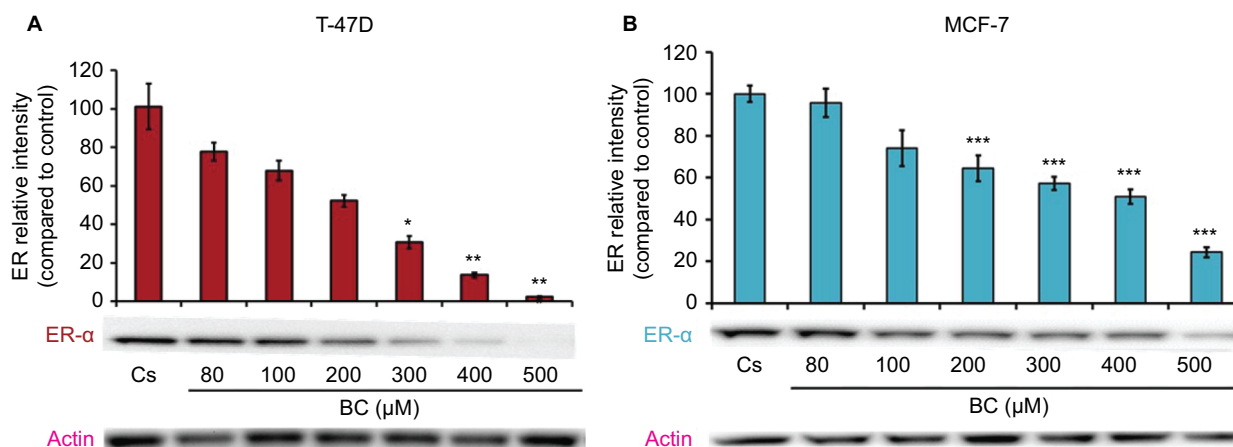
showed a 20% reduction in PR expression compared to control (Figure 2A), and a 50% reduction in BRCA1 expression compared to control (Figure 3A). In MCF-7 cells, the same BC concentration of 400  $\mu\text{M}$  showed a 29% reduction in PR expression compared to control (Figure 2B), and a 43% reduction in BRCA1 expression compared to control (Figure 3B).

### Effects of BC in combination with estrogens and antiestrogens on ER- $\alpha$ , PR, and BRCA1 protein expression

Treatments of  $\text{E}_2$  (10 nM) show an expected decrease in ER- $\alpha$  expression in both the T-47D (Figure 4) and MCF-7 (Figure 5) cell lines. Similar effects are seen with ICI, as well as the combination of  $\text{E}_2$  and ICI. A synergistic effect was seen on the downregulation of ER- $\alpha$  expression when BC (400  $\mu\text{M}$ ) was combined with  $\text{E}_2$  or ICI. A 90% decrease in ER- $\alpha$  expression was observed following cotreatment of BC and  $\text{E}_2$  in T-47D cells, with a 31% decrease compared to the control in MCF-7 cells following this same treatment. Combined treatment with BC and ICI showed an additive effect on the downregulation of PR compared to ICI alone in both T-47D (Figure 6) and MCF-7 cells (Figure 7). Treatment of BC in combination with ICI and in combination with TAM showed a downregulation in BRCA1 expression in both cell lines (Figures 8 and 9).

### Concentration-dependent effects of black cohosh on cell viability

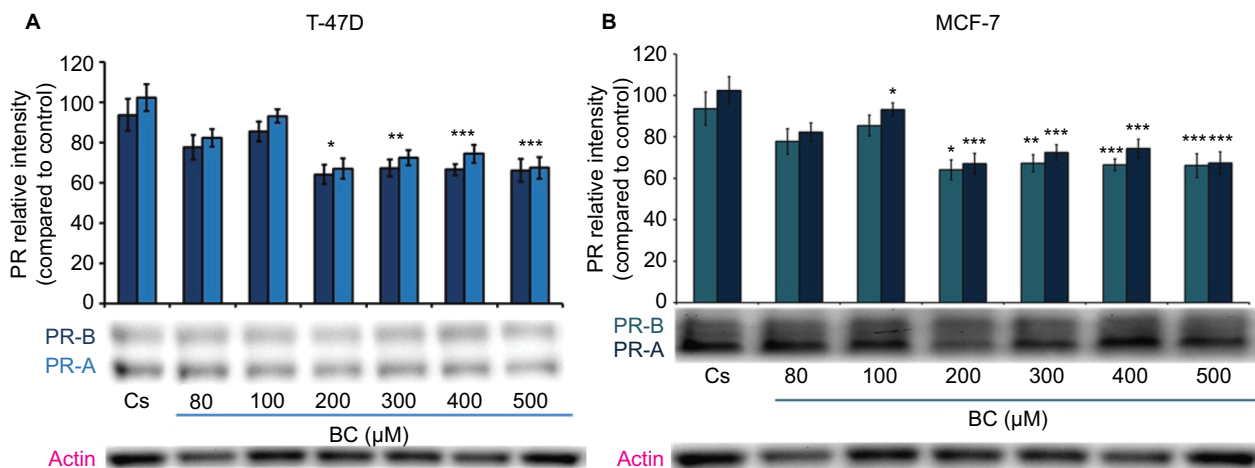
BC treatments of varying concentrations (80–500  $\mu\text{M}$ ) demonstrated a concentration-dependent decrease in both T-47D and MCF-7 cell viability, consistent with the decrease in ER- $\alpha$ , PR, and BRCA1 protein expression (Figure 10A and B). The



**Figure 1** (A) BC downregulates ER- $\alpha$  protein expression in T-47D cells. (B) BC downregulates ER- $\alpha$  in MCF-7 cells.

**Notes:** The control, "Cs", represents dimethyl sulfoxide, the solvent for BC. The cells were treated for 24 hours with 80–500  $\mu\text{M}$  BC and subjected to SDS-PAGE and Western blot analysis as described in the "Materials and methods" section. Actin bands represent equivalence in protein loading. The optical densities of each protein band were measured using the computer program Image Studio Lite. Differences are considered significant at \* $P < 0.05$ ; \*\* $P < 0.01$ ; \*\*\* $P < 0.001$ . Statistical analyses were carried out using SPSS for Windows version 11.5 (SPSS Inc., Chicago, IL, USA).

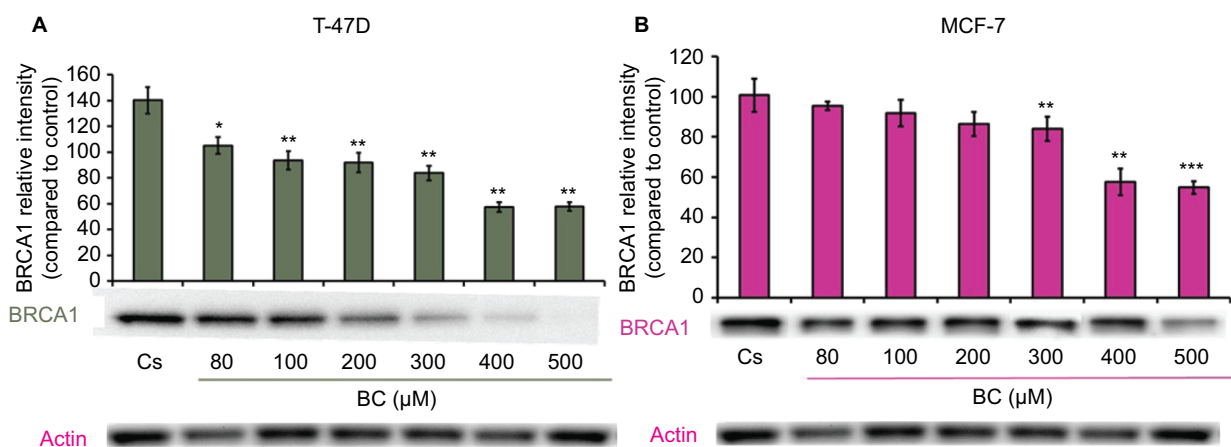
**Abbreviations:** BC, black cohosh; ER- $\alpha$ , estrogen receptor alpha.



**Figure 2 (A)** Black cohosh downregulates PR protein expression in T-47D cells. **(B)** BC downregulates PR protein expression in MCF-7 cells.

**Notes:** The control, “Cs”, represents dimethyl sulfoxide, the solvent for BC. The cells were treated for 24 hours with 80–500  $\mu\text{M}$  BC and subjected to SDS-PAGE and Western blot analysis as described in Materials and methods section. Actin bands represent equivalence in protein loading. The optical densities of each protein band were measured using the computer program Image Studio Lite. Differences are considered significant at \* $P < 0.05$ ; \*\* $P < 0.01$ ; \*\*\* $P < 0.001$ . Statistical analyses were carried out using SPSS for windows version 11.5 (SPSS Inc., Chicago, IL, USA).

**Abbreviations:** BC, black cohosh; PR, progesterone receptor.



**Figure 3 (A)** BC downregulates BRCA1 protein expression in T-47D cells. **(B)** BC downregulates BRCA1 protein expression in MCF-7 cells.

**Notes:** The control, “Cs”, represents dimethyl sulfoxide, the solvent for BC. The cells were treated for 24 hours with 80–500  $\mu\text{M}$  BC and subjected to SDS-PAGE and Western blot analysis as described in the “Materials and methods” section. Actin bands represent equivalence in protein loading. The optical densities of each protein band were measured using the computer program Image Studio Lite. Differences are considered significant at \* $P < 0.05$ ; \*\* $P < 0.01$ ; \*\*\* $P < 0.001$ . Statistical analyses were carried out using SPSS for windows version 11.5 (SPSS Inc., Chicago, IL, USA).

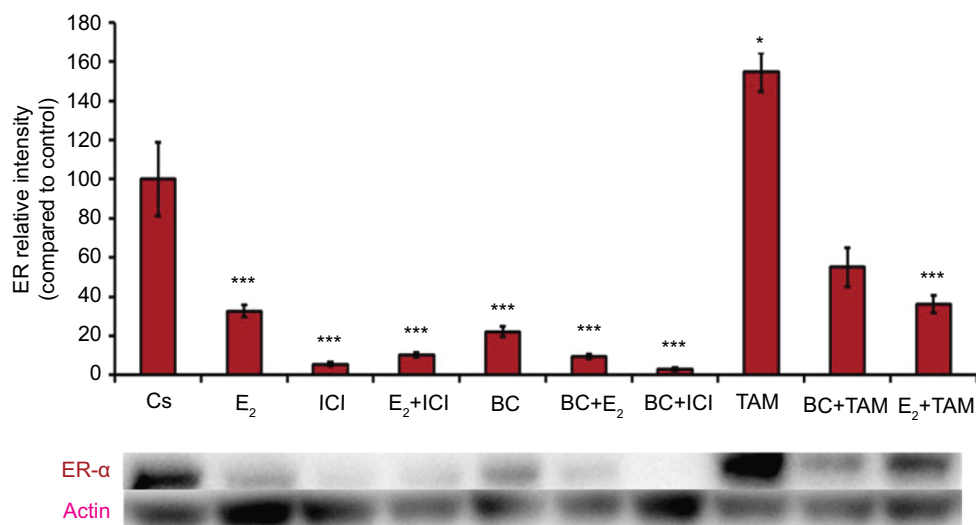
**Abbreviation:** BC, black cohosh.

previously determined optimal concentration of BC (400  $\mu\text{M}$ ) showed a 50% decrease in T-47D viability compared to control, and a 48% decrease in MCF-7 viability compared to control.

## Effects of BC in combination with estrogens and antiestrogens on cell viability

Treatment with  $E_2$  displayed a proliferative effect on both T-47D and MCF-7 cell viability, which is to be expected.

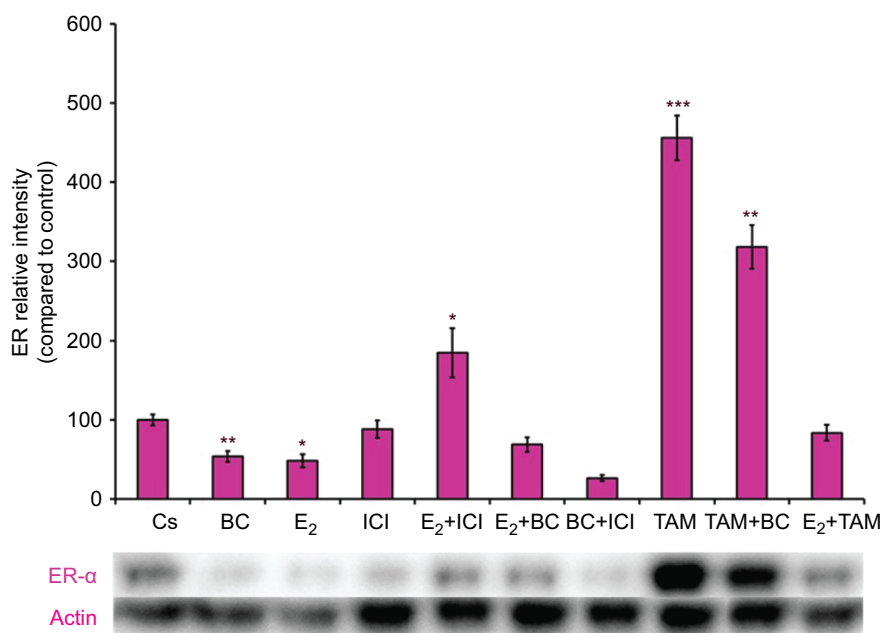
This effect of  $E_2$  was reversed by BC and ICI alone, which is seen by the combination of both treatments with  $E_2$  in T47-D (Figure 11A). Treatments of BC alone and in combination with  $E_2$ , ICI, and TAM all demonstrate a significant decrease in cell viability in T47-D compared to control. In MCF-7, treatment with  $E_2$  alone and in combination with TAM demonstrated a significant increase in cell viability (Figure 11B).



**Figure 4** The effects of hormones and antihormones in combination with BC on ER- $\alpha$  expression in T-47D cells.

**Notes:** The control, "Cs", represents dimethyl sulfoxide, the solvent for BC. The cells were treated for 24 hours with varying combinations of BC, estrogens, and antiestrogens. They were subjected to SDS-PAGE and Western blot analysis as described in the "Materials and methods" section. Actin bands represent equivalence in protein loading. The optical densities of each protein band were measured using the computer program Image Studio Lite. Differences are considered significant at \* $P < 0.05$ ; \*\*\* $P < 0.001$ . Statistical analyses were carried out using SPSS for windows version 11.5 (SPSS Inc., Chicago, IL, USA).

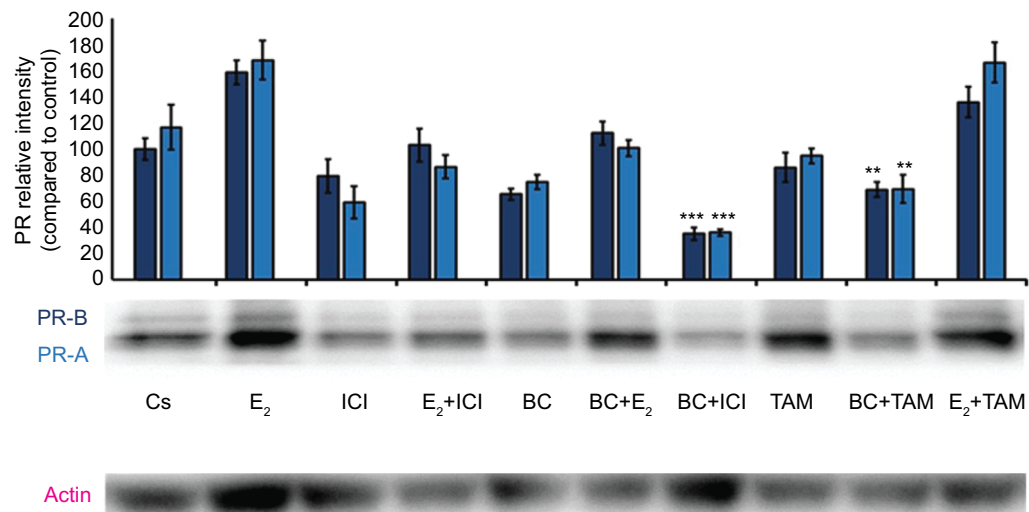
**Abbreviations:** BC, black cohosh; ER- $\alpha$ , estrogen receptor alpha.



**Figure 5** The effects of hormones and antihormones in combination with BC on ER- $\alpha$  expression in MCF-7 cells.

**Notes:** The control, "Cs", represents dimethyl sulfoxide, the solvent for BC. The cells were treated for 24 hours with varying combinations of BC, estrogens, and antiestrogens. They were subjected to SDS-PAGE and Western blot analysis as described in the "Materials and methods" section. Actin bands represent equivalence in protein loading. The optical densities of each protein band were measured using the computer program Image Studio Lite. Differences are considered significant at \* $P < 0.05$ ; \*\* $P < 0.01$ ; \*\*\* $P < 0.001$ . Statistical analyses were carried out using SPSS for windows version 11.5 (SPSS Inc., Chicago, IL, USA).

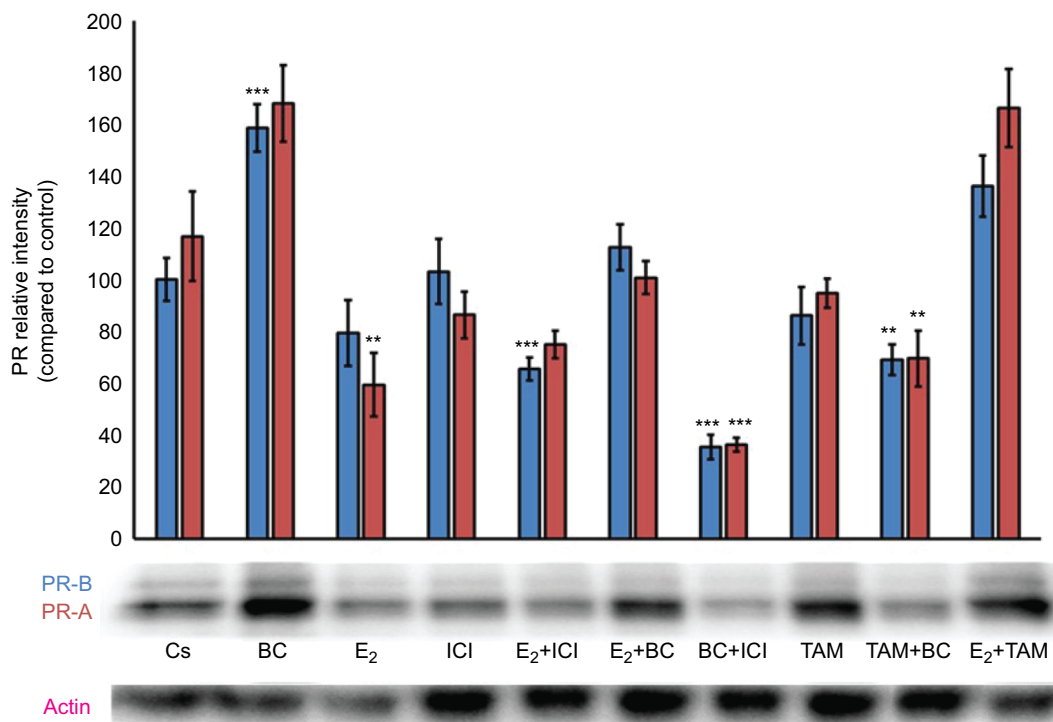
**Abbreviations:** BC, black cohosh; ER- $\alpha$ , estrogen receptor alpha.



**Figure 6** The effects of hormones and antihormones in combination with BC on PR expression in T-47D cells.

**Notes:** The control, “Cs”, represents dimethyl sulfoxide, the solvent for BC. The cells were treated for 24 hours with varying combinations of BC, estrogens, and antiestrogens. They were subjected to SDS-PAGE and Western blot analysis as described in the “Materials and methods” section. Actin bands represent equivalence in protein loading. The optical densities of each protein band were measured using the computer program Image Studio Lite. Differences are considered significant at \*\* $P < 0.01$ ; \*\*\* $P < 0.001$ . Statistical analyses were carried out using SPSS for windows version 11.5 (SPSS Inc., Chicago, IL, USA).

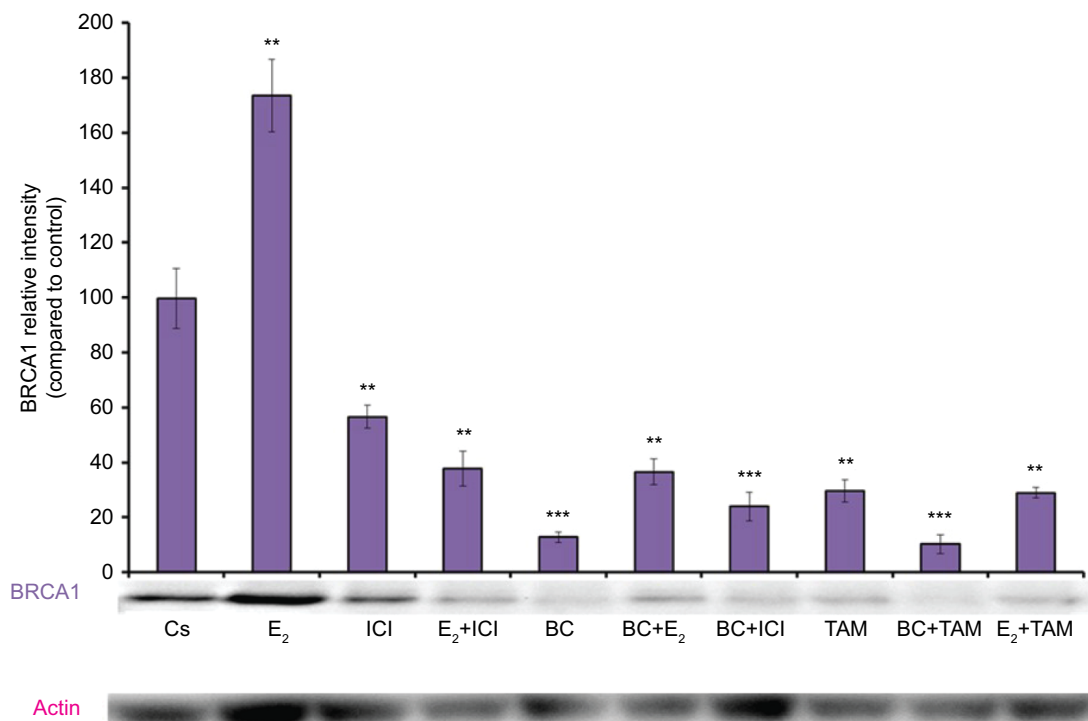
**Abbreviations:** BC, black cohosh; PR, progesterone receptor.



**Figure 7** The effects of hormones and antihormones in combination with BC on PR expression in MCF-7 cells.

**Notes:** The control, “Cs”, represents dimethyl sulfoxide, the solvent for BC. The cells were treated for 24 hours with varying combinations of BC, estrogens, and antiestrogens. They were subjected to SDS-PAGE and Western blot analysis as described in the “Materials and methods” section. Actin bands represent equivalence in protein loading. The optical densities of each protein band were measured using the computer program Image Studio Lite. Differences are considered significant at \*\* $P < 0.01$ ; \*\*\* $P < 0.001$ . Statistical analyses were carried out using SPSS for windows version 11.5 (SPSS Inc., Chicago, IL, USA).

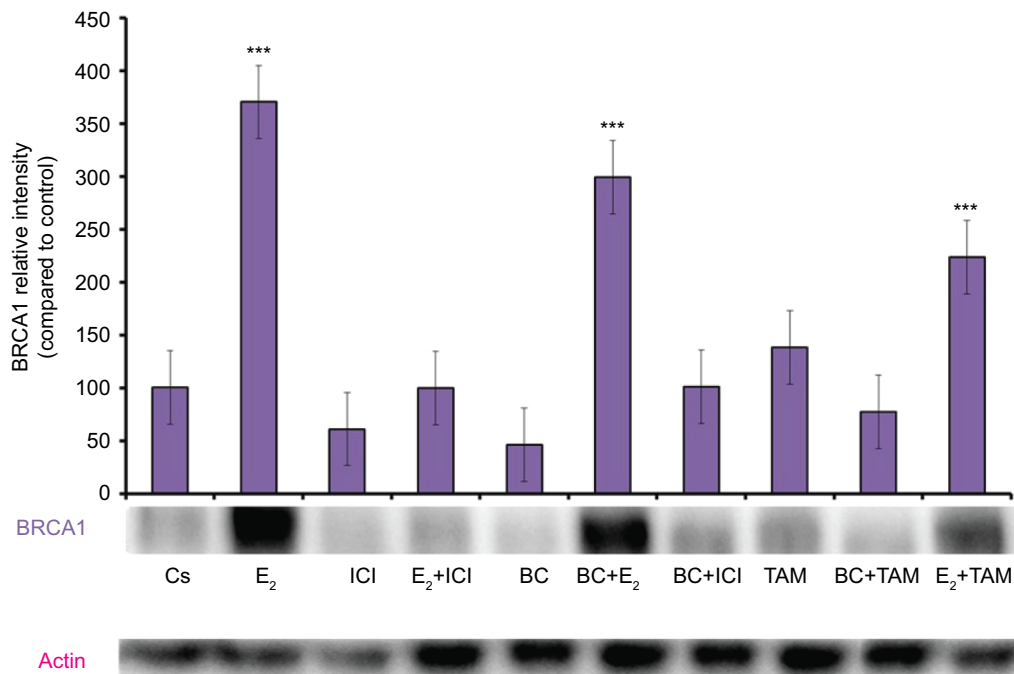
**Abbreviations:** BC, black cohosh; PR, progesterone receptor.



**Figure 8** The effects of hormones and antihormones in combination with BC on BRCA1 expression in T-47D cells.

**Notes:** The control, “Cs”, represents dimethyl sulfoxide, the solvent for BC. The cells were treated for 24 hours with varying combinations of BC, estrogens, and antiestrogens. They were subjected to SDS-PAGE and Western blot analysis as described in the “Materials and methods” section. Actin bands represent equivalence in protein loading. The optical densities of each protein band were measured using the computer program Image Studio Lite. Differences are considered significant at \*\* $P < 0.01$ ; \*\*\* $P < 0.001$ . Statistical analyses were carried out using SPSS for windows version 11.5 (SPSS Inc., Chicago, IL, USA).

**Abbreviation:** BC, black cohosh.

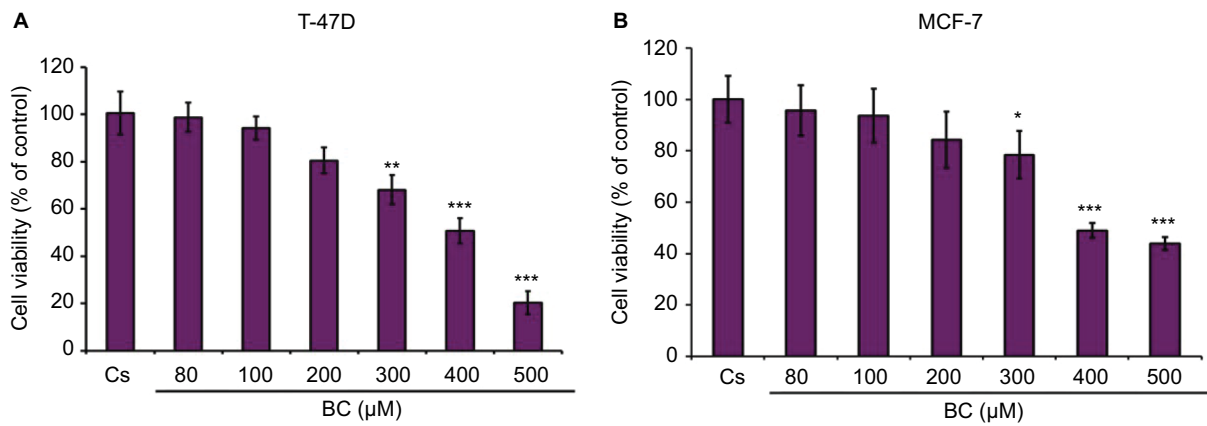


**Figure 9** The effects of hormones and antihormones in combination with BC on BRCA1 expression in MCF-7 cells.

**Notes:** The control, “Cs”, represents dimethyl sulfoxide, the solvent for BC. The cells were treated for 24 hours with varying combinations of BC, estrogens, and antiestrogens. They were subjected to SDS-PAGE and Western blot analysis as described in the “Materials and methods” section. Actin bands represent equivalence in protein loading. The optical densities of each protein band were measured using the computer program Image Studio Lite. Differences are considered significant at \*\*\* $P < 0.001$ . Statistical analyses were carried out using SPSS for windows version 11.5 (SPSS Inc., Chicago, IL, USA).

**Abbreviation:** BC, black cohosh.

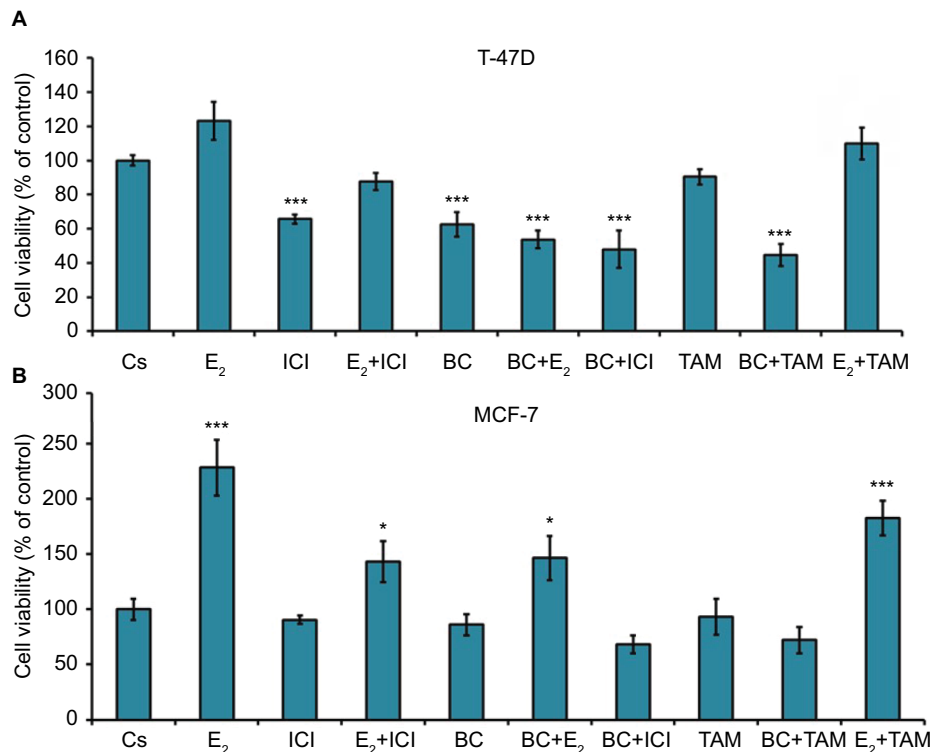




**Figure 10 (A, B)** BC decreases T-47D and MCF-7 cell viability.

**Notes:** The control, "Cs", represents dimethyl sulfoxide, the solvent for BC. The cells were treated for 6 days with 80–500 µM BC and cell viability was determined by propidium iodide staining and image cytometry using the Cellometer vision CBA. The samples were compared to the control. Differences were considered significant at \* $P < 0.05$ ; \*\* $P < 0.01$ ; \*\*\* $P < 0.001$ . Statistical analyses were carried out using SPSS for windows version 11.5 (SPSS Inc., Chicago, IL, USA).

**Abbreviation:** BC, black cohosh.



**Figure 11 (A, B)** The effects of hormones and anti-hormones in combination with BC on T-47D and MCF-7 cell viability.

**Notes:** The control, "Cs", represents dimethyl sulfoxide, the solvent for BC. The cells were treated for 6 days with varying combinations of BC, estrogens, and antiestrogens. Cell viability was determined by propidium iodide staining and image cytometry using the Cellometer vision CBA. The samples were compared to the control. Differences were considered significant at \* $P < 0.05$ ; \*\*\* $P < 0.001$ . Statistical analyses were carried out using SPSS for windows version 11.5 (SPSS Inc., Chicago, IL, USA).

**Abbreviation:** BC, black cohosh.

## Effects of BC on the cellular localization of BRCA1

Confocal images show that BRCA1 is localized in the control (DMSO), as expected (Figure 12). Treatment of cells with

10 nM E<sub>2</sub> significantly increased BRCA1 nuclear intensity compared to control. The addition of 1 µM ICI combined with E<sub>2</sub> significantly reduced the intensity of immunolocalization of BRCA1 as compared to the E<sub>2</sub> treatment. Treatment with

ICI, TAM, and BC reduced the BRCA1 levels compared to control, which may also indicate a possible ER- $\alpha$ -dependent mechanism.

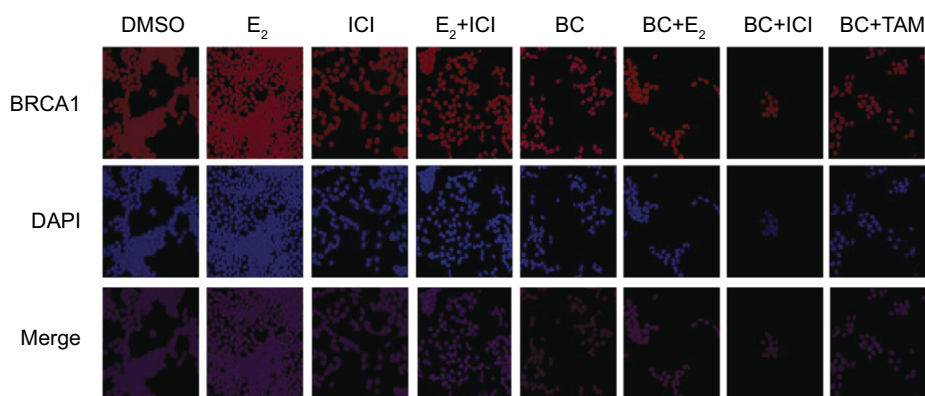
## Effects of BC, E<sub>2</sub>, and ICI alone and in combination on ESR1 levels in T-47D and MCF-7 cells

RT-qPCR was utilized to study the effects of BC on the levels of ER- $\alpha$  under various conditions. ESR1 gene expression was normalized to reference genes, HPRT-1 and ACTB, in T-47D and MCF-7 cells exposed to treatment conditions for 24 hours. These results, depicted in Figure 13A and B, showed that ESR1 expression was reduced with 10 nM E<sub>2</sub> and with 400  $\mu$ M BC, as well as in combination with E<sub>2</sub> and BC when compared to the control. The effects observed by BC and ICI combined induced a 30% decrease in ESR1 expression levels as compared to the DMSO-treated control.

## Discussion

Breast cancer is a leading cause of death among women in the USA and continues to have an impact around the world. The research of hormone-dependent breast cancer in particular is important in delineating the role of potential therapeutic mechanisms that act on steroid hormone receptors. BC, which is becoming more commonly used as an herbal alternative to conventional hormone-replacement therapy after menopause, is currently being investigated as possibly having this therapeutic potential. These studies may contribute to the understanding of its mechanism of action in hormone-dependent breast cancer cells.

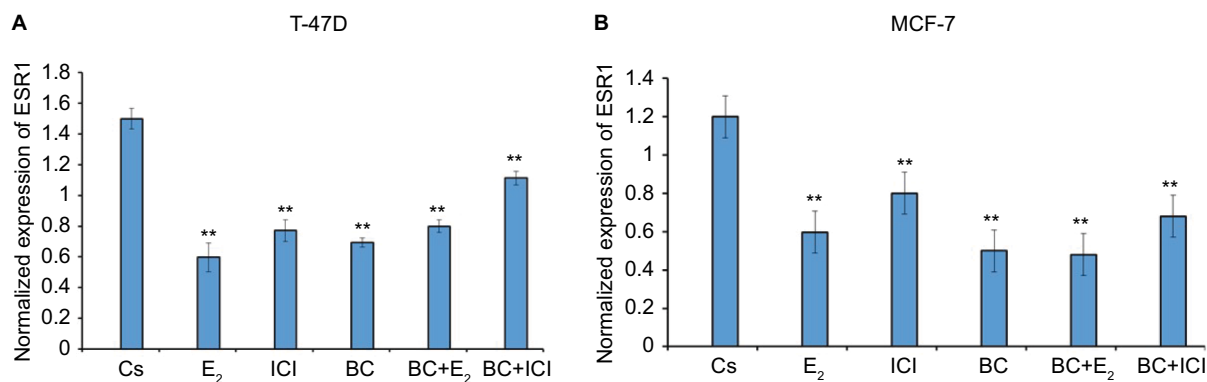
Overall, Western blot analyses revealed a decrease in ER- $\alpha$  expression when the optimal concentration of BC (400  $\mu$ M) was present. This is consistent with the findings of the cell viability experiments, which show a corresponding decrease in cell viability at this same optimal concentration.



**Figure 12** The effects of BC on the cellular localization of BRCA1.

**Notes:** Images (magnification  $\times 20$ ) were acquired according to the "Materials and methods" section. The control, "Cs", represents DMSO, the solvent for BC.

**Abbreviations:** BC, black cohosh; DMSO, dimethyl sulfoxide.



**Figure 13 (A, B)** The effects of BC, E<sub>2</sub>, and ICI alone and in combination on ESR1 levels in T-47D and MCF-7 breast cancer cells.

**Notes:** ESR1 mRNA levels determined by reverse transcription quantitative real-time PCR. T-47D cells were treated in the presence or absence of 400  $\mu$ M BC, E<sub>2</sub>, and ICI for 24 hours. The control, "Cs", represents dimethyl sulfoxide, the solvent for BC. Results are shown as the mean  $\pm$  SEM of at least three independent experiments with three replicates in each experiment. The samples were compared to the control. Differences were considered significant at  $**P < 0.01$ . Statistical analyses were carried out using SPSS for windows version 11.5 (SPSS Inc., Chicago, IL, USA).

**Abbreviations:** BC, black cohosh; SEM, standard error of the mean.

There was an approximate 80% reduction in ER- $\alpha$  expression compared to the control and an analogous 50% decrease in T-47D cell viability after treatment with 400  $\mu$ M BC. In the MCF-7 cell line, treatment with the optimal BC concentration of 400  $\mu$ M resulted in ~50% reduction in ER- $\alpha$  expression as compared to the control and an analogous 48% decrease in MCF-7 cell viability. This may be indicative of a relationship between the two effects.

Mutations in the tumor-suppressor gene BRCA1 have been known to play a significant role amid high-risk factors for breast cancer development. Research has shown that there may be a possible interaction between the BRCA1 protein and ER- $\alpha$ . It has previously been demonstrated that BRCA1-related breast cancer patients have a higher risk of developing cancer in estrogen-sensitive tissues.<sup>25</sup> It is suggested that ER- $\alpha$  and BRCA1 signal together through crosstalk mechanisms and these interactions may contribute to breast tumorigenesis and/or growth in the presence of estrogen. Interactive pathways such as these may begin to provide an explanation as to why BC and other anticancer compounds decrease the production of tumor-suppressor proteins such as BRCA1 and p53.<sup>4,5</sup> Currently, however, it is unclear whether the growth-inhibitory effects of BC cause an appropriate decreased cellular viability for tumor-suppressor gene expression or if other cellular mechanisms lead to this decreased expression. Therefore, the correlational effects of BC on ER- $\alpha$  and BRCA1 that have been discovered in these studies contribute valuable insight and prompt further research necessary to understand the relationship between the two proteins as well as the effects of herbal supplements on these proteins.

The concentration-dependent decrease in ER- $\alpha$  expression due to treatment with BC is consistent with other findings that show a change in the expression of ER- $\alpha$  after BC treatment. Furthermore, these studies also suggest that the antiproliferative effects of T-47D cells may be due to BC's antiestrogen effects.<sup>20</sup> The hormone studies, which examined cell viability in both the T-47D and MCF-7 cell lines, show that the proliferative effects of E<sub>2</sub> were diminished when E<sub>2</sub> treatments were combined with BC. This is consistent with other research, which showed a decrease in MCF-7 cell proliferation with BC treatment.<sup>15</sup> There is a corresponding decrease in ER- $\alpha$  expression when BC, in combination with E<sub>2</sub>, is used. ESR1 gene expression levels were reduced with the treatment of 10 nM E<sub>2</sub> and with 400  $\mu$ M BC in both cell lines. Combination treatment with E<sub>2</sub> and BC also decreases the expression of ESR1 compared to the controls in both cell lines. Consistent with our findings, BC appears to decrease the expression of proteins that are involved in translation.

Based on the observations of BC effects on cell viability, ER- $\alpha$  and PR protein expression along with concentration-dependent alterations in the sensitivity of both estrogens and antiestrogens in our results and the results from previous studies performed in our lab, there is a possibility that a dual mechanism for BC is both ER-dependent and independent. This is further indicative of the possible estrogenic properties of BC, as supported by other findings.<sup>20</sup> However, some studies have shown that BC does not act by mimicking the effects of estrogen; rather, it induces apoptosis (cell death) and prevents proliferation through other biochemical pathways.<sup>26</sup> Other studies suggest that the growth-inhibitory effects of BC on breast cancer cells are related to its chemical structure of triterpene glycosides.<sup>15</sup> Further research is needed for any definitive conclusion on whether or not BC acts through estrogen-like activity.

Our findings contribute to a better understanding of the effects of BC not only on ER- $\alpha$  expression but also on PR and BRCA1 expression in breast cancer cells. It is clear from our studies that this herbal compound substantially alters hormone-dependent breast cancer cells, but more extensive research is required to elucidate its exact mechanism of action.

## Acknowledgments

We would like to thank Molly McDonald for her technical assistance. We would also like to thank NatureX for their donation of black cohosh. Funding was provided by the Center of Biomedical Research and Prevention Research Center, and by the Honors College at Oakland University, Rochester, MI, USA. An abstract of this paper was presented at the 98th Annual Meeting of the Endocrine Society in Boston April 1–4, 2016, as a poster presentation with interim findings. The poster's abstract was published in "Poster Abstracts" in the meeting proceedings. Presentation Number: FRI-125: <http://press.endocrine.org/doi/abs/10.1210/endo-meetings.2016.ED.1.FRI-125>.

## Disclosure

The authors report no conflicts of interest in this work.

## References

1. Harbeck N, Gnant M. Breast cancer. *Lancet*. 2016;389(10074): P1134–P1150.
2. Woolston C. Breast cancer. *Nature*. 2015;527(7578):S101.
3. Szymd M. The effects of black cohosh on the regulation of estrogen receptor (ER $\alpha$ ) and progesterone receptor (PR) in breast cancer cells. *Breast Cancer*. 2018;10:1–11.
4. Siebert AE, Sanchez AL, Dinda S, Moudgil VK. Effects of estrogen metabolite 2-methoxyestradiol on tumor suppressor protein p53 and proliferation of breast cancer cells. *Syst Biol Reprod Med*. 2011;57(6):279–287.

5. Dinda S, Sanchez A, Moudgil VK. Effects of LY117018 (a SERM analog of raloxifene) on tumor suppressor proteins and proliferation of breast cancer cells. *Horm Mol Biol Clin Investig.* 2010;2(1):211–217.
6. Powell CE, Soto AM, Sonnenschein C. Identification and characterization of membrane estrogen receptor from MCF7 estrogen-target cells. *J Steroid Biochem Mol Biol.* 2001;77(2–3):97–108.
7. Tung N, Wang Y, Collins LC, et al. Estrogen receptor positive breast cancers in BRCA1 mutation carriers: clinical risk factors and pathologic features. *Breast Cancer Res.* 2010;12(1):R12.
8. Jia M, Dahlman-Wright K, Gustafsson JÅ. Estrogen receptor alpha and beta in health and disease. *Best Pract Res Clin Endocrinol Metab.* 2015;29(4):557–568.
9. Yip CH, Rhodes A. Estrogen and progesterone receptors in breast cancer. *Future Oncol.* 2014;10(14):2293–2301.
10. Rosen EM, Fan S, Pestell RG, Goldberg ID. BRCA1 gene in breast cancer. *J Cell Physiol.* 2003;196(1):19–41.
11. Elstrodt F, Hollestelle A, Nagel JH, et al. BRCA1 mutation analysis of 41 human breast cancer cell lines reveals three new deleterious mutants. *Cancer Res.* 2006;66(1):41–45.
12. Vaidya Y, Vaidya P, Vaidya T. Ductal carcinoma in situ of the breast. *Indian J Surg.* 2015;77(2):141–146.
13. Wiechmann L, Kuerer HM. The molecular journey from ductal carcinoma in situ to invasive breast cancer. *Cancer.* 2008;112(10):2130–2142.
14. Soto AM, Sonnenschein C. The role of estrogens on the proliferation of human breast tumor cells (MCF-7). *J Steroid Biochem.* 1985;23(1):87–94.
15. Gaube F, Wolf S, Pusch L, Kroll TC, Hamburger M. Gene expression profiling reveals effects of Cimicifuga racemosa (L.) NUTT. (black cohosh) on the estrogen receptor positive human breast cancer cell line MCF-7. *BMC Pharmacol.* 2007;7(1):11.
16. Merchant S, Stebbing J. Black cohosh, hot flushes, and breast cancer. *Lancet Oncol.* 2015;16(2):137–138.
17. Borrelli F, Ernst E. Alternative and complementary therapies for the menopause. *Maturitas.* 2010;66(4):333–343.
18. Borrelli F, Ernst E. Black cohosh (*Cimicifuga racemosa*) for menopausal symptoms: a systematic review of its efficacy. *Pharmacol Res.* 2008;58(1):8–14.
19. Borrelli F, Ernst E. Black cohosh (*Cimicifuga racemosa*): a systematic review of adverse events. *Am J Obstet Gynecol.* 2008;199(5):455–466.
20. Borrelli F, Izzo AA, Ernst E. Pharmacological effects of Cimicifuga racemosa. *Life Sci.* 2003;73(10):1215–1229.
21. Einbond LS, Wen-Cai Y, He K, et al. Growth inhibitory activity of extracts and compounds from Cimicifuga species on human breast cancer cells. *Phytomedicine.* 2008;15(6–7):504–511.
22. Howell A, Osborne CK, Morris C, Wakeling AE. ICI 182,780 (Faslodex(TM)): development of a novel, “pure” antiestrogen. *Cancer.* 2000;89(4):817–825.
23. An K-C. Selective estrogen receptor modulators. *Asian Spine J.* 2016;10(4):787–791.
24. Saluzzo J, Hallman KM, Aleck K, et al. The regulation of tumor suppressor protein, p53, and estrogen receptor (ER $\alpha$ ) by resveratrol in breast cancer cells. *Genes Cancer.* 2016;7(11–12):414–425.
25. Wang L, Di LJ. BRCA1 and estrogen/estrogen receptor in breast cancer: where they interact?. *Int J Biol Sci.* 10(5):566–575.
26. Viereck V, Emons G, Wuttke W. Black cohosh: just another phytoestrogen? *Trends Endocrinol Metab.* 2005;16(5):214–221.

## Breast Cancer - Targets and Therapy

### Publish your work in this journal

Breast Cancer - Targets and Therapy is an international, peer-reviewed open access journal focusing on breast cancer research, identification of therapeutic targets and the optimal use of preventative and integrated treatment interventions to achieve improved outcomes, enhanced survival and quality of life for the cancer patient.

Submit your manuscript here: <https://www.dovepress.com/breast-cancer---targets-and-therapy-journal>

Dovepress

The manuscript management system is completely online and includes a very quick and fair peer-review system, which is all easy to use. Visit <http://www.dovepress.com/testimonials.php> to read real quotes from published authors.