


CASE REPORT

Open Access



# Response to pembrolizumab in a patient with primary lung adenocarcinoma originated from indium lung

Yasuharu Sekine<sup>1</sup>, Hideo Ichimura<sup>1,2,3\*</sup> , Sho Ueda<sup>1</sup>, Keisuke Kobayashi<sup>1</sup>, Takeshi Nawa<sup>4</sup>, Atsuko Amata<sup>5</sup>, Tatsuya Chonan<sup>5</sup>, Akiko Sakata<sup>6</sup>, Yoji Komatsu<sup>3,7</sup> and Yukio Sato<sup>2</sup>

## Abstract

**Background:** Indium is a metal used as a compound called indium-tin oxide for liquid crystal display. Its inhalation causes lung toxicity, resulting in a new occupational lung disease called indium lung. Although the carcinogenicity of indium has been reported in an animal model, its carcinogenicity in humans is unknown.

**Case presentation:** This is the first reported case of a primary lung cancer originating from indium lung. In this report, we describe a 46-year-old man with interstitial pneumonia-type indium lung diagnosed 16 years ago. The initial symptom was left chest pain, and computed tomography showed a mass adjacent to the aorta with left pleural effusion. Specimens collected using video-assisted thoracoscopy revealed an adenocarcinoma with a high expression of programmed cell death-ligand 1 (cT4N0M1a stage IVA). Although the lesions showed a remarkable aggressive nature, the patient benefited from pembrolizumab, a monoclonal antibody against programmed cell death 1, which was used as second-line therapy for 2 years.

**Conclusions:** It is important for clinicians to be aware of lung cancer development in indium-exposed workers or in patients with indium lung, as this could have an aggressive behavior. Treatment with immune checkpoint inhibitors is an option even in patients with interstitial pneumonia-type indium lung.

**Keywords:** Indium-tin oxide, Carcinogenicity, Occupational lung disease, Lung cancer, Immune checkpoint inhibitor

## Background

Indium is a metal that can be used to create a compound called indium-tin oxide, which is used in liquid crystal displays. Its inhalation can cause an occupational lung disease called indium lung, which manifests as alveolar proteinosis, interstitial pneumonia or pulmonary fibrosis, and emphysema [1, 2]. In addition to lung toxicity, the carcinogenicity of indium has been demonstrated in rat models with a chronic exposure to indium [3]. Therefore,

indium carcinogenicity in humans is of great concern. Although a cohort study of indium-exposed workers reported two lung cancer cases as incident cases, there is no information on the pathological type or therapeutic process [4]. This patient has been described twice in prior reports; first, as a case of indium lung [5], and second, as a case of lung cancer, which was the first pathologically confirmed case originating from indium lung [6]. In this report, we further describe the clinical characteristics of the disease and its detailed therapeutic course.

\*Correspondence: ichimura@md.tsukuba.ac.jp

<sup>1</sup> Department of Thoracic Surgery, Faculty of Medicine, Hitachi General Hospital, University of Tsukuba, Hitachi Medical Education and Research Center, 2-1-1 Jyounan, Hitachi, Ibaraki 317-0077, Japan

Full list of author information is available at the end of the article



© The Author(s) 2021. **Open Access** This article is licensed under a Creative Commons Attribution 4.0 International License, which permits use, sharing, adaptation, distribution and reproduction in any medium or format, as long as you give appropriate credit to the original author(s) and the source, provide a link to the Creative Commons licence, and indicate if changes were made. The images or other third party material in this article are included in the article's Creative Commons licence, unless indicated otherwise in a credit line to the material. If material is not included in the article's Creative Commons licence and your intended use is not permitted by statutory regulation or exceeds the permitted use, you will need to obtain permission directly from the copyright holder. To view a copy of this licence, visit <http://creativecommons.org/licenses/by/4.0/>. The Creative Commons Public Domain Dedication waiver (<http://creativecommons.org/publicdomain/zero/1.0/>) applies to the data made available in this article, unless otherwise stated in a credit line to the data.

## Case presentation

A 46-year-old man who complained of left-sided chest pain for 2 weeks was transferred to our hospital for exploratory video-assisted thoracoscopy (VATS). He had a history of indium-tin oxide inhalation for 12 years, resulting from occupational exposure. He underwent chest X-ray at his workplace during routine check-up, and it showed a bilateral reticular shadow in the middle and lower lung fields, and he complained of cough and phlegm. He then underwent chest computed tomography (CT) and trans-bronchial lung biopsy, which led to the diagnosis of an indium lung (interstitial pneumonia or pulmonary fibrosis type) 16 years ago [5]. Subsequently, he was transferred to a section of his workplace where he was not exposed to indium. He went for a medical checkup twice a year. Six years before this consultation (10 years after his transfer to a non-indium section in his workplace), he had an acute exacerbation of indium lung, which was treated with steroid pulse therapy. After that, the patient received steroids, which were tapered off for 3 years. He was a non-smoker and also had a colon polyp. At the time he was diagnosed with indium lung, the serum indium levels (sIn) were 40.42 ng/mL (normal range:  $0.06 \pm 0.03$  ng/mL) and serum Krebs von den Lungen-6 (KL-6, as a biomarker of interstitial pneumonia; normal range:  $< 500$  U/mL) levels were 1930 U/mL. Although cessation of indium exposure gradually decreased sIn and KL-6 levels, they remained higher than normal (two years ago, sIn and KL-6 levels were 8.65 ng/mL and 1300 U/mL, respectively).

On admission, computed tomography (CT) showed pleural effusion, pleural nodules, and a mass ( $32 \times 30$  mm in size) adjacent to the aorta (Fig. 1a). A comparison with CT scans taken 12 days ago at the previous hospital (Fig. 1b) demonstrated a significant deterioration of the entire lesion. VATS under general anesthesia revealed that there were multiple nodules of various sizes on the visceral and parietal pleura of the left thoracic cavity (Fig. 1c). We performed biopsy of the pleural nodule on the diaphragm and wedge resection of the peripheral region of the left lower lobe, where it was in contact with the diaphragm. The postoperative course was uneventful, and the patient was transferred to the previous hospital on postoperative day 8.

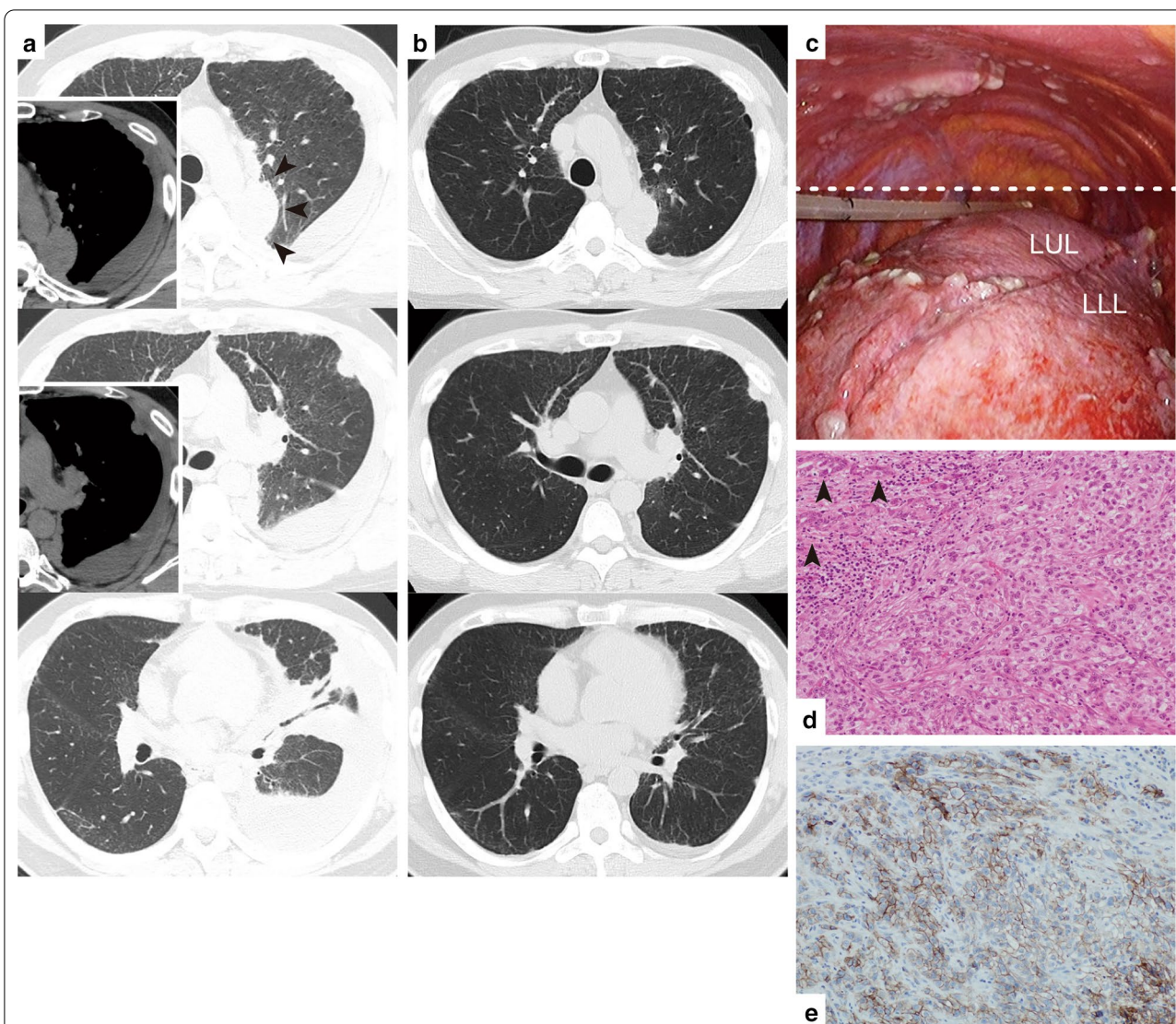
Histopathological examinations revealed that the nodule consisted of polygonal tumor cells with nuclear atypia that formed solid nests partially, including acinar nests (Fig. 1d). On immunohistochemical examination, calretinin and D2-40 were negative, and thyroid transcription factor 1 (TTF-1) was positive in tumor cells within the acinar nest. Based on these findings, the patient was diagnosed with primary lung adenocarcinoma. The tumor cells did not show any driver

mutations in *EGFR*, *ALK*, and *ROS1*. Immunohistochemical analysis of programmed cell death receptor ligand 1 (22C3) showed highly positive staining (Tumor Proportion Score  $> 95\%$ ) (Fig. 1e). In the lung parenchyma specimens, cholesterol granulomas and fibrotic changes in the alveolar septa were apparent [6].

The patient was transferred to our hospital again for chemotherapy 37 days after the VATS. Pre-chemotherapy CT showed further growth of all the lesions in the left thoracic cavity (Fig. 2a). Fluorodeoxyglucose positron emission tomography and enhanced brain magnetic resonance imaging (MRI) showed no extrathoracic metastasis. Therefore, the patient was diagnosed with stage IVA left lung cancer (cT4N0M1a). Considering his history of acute exacerbation of the indium lung, he received cytotoxic agents (a regimen of carboplatin and nanoparticle albumin-bound paclitaxel) as first-line therapy. This was because we were concerned about the adverse effects of the immune checkpoint inhibitor (ICI), especially ICI-related pneumonitis/interstitial lung disease [7, 8]. While the first-line treatment showed a transient response, a CT scan taken after four cycles of chemotherapy showed progressive disease with direct invasion of the sixth thoracic vertebra and metastasis of the fourth vertebra. Palliative radiotherapy (30 Gy) for the fourth and sixth thoracic vertebrae was administered, and pembrolizumab (200 mg/body) was administered as second-line therapy (Fig. 2b shows a chest X-ray taken one day before ICI initiation).

On day 10 of the first ICI administration, he visited a hospital with impaired consciousness and vertigo. Brain MRI showed multiple brain metastases measuring 5 cm in the left frontal lobe, 3.5 cm in the left occipital lobe, and 7 mm in the right thalamus (Fig. 2c). Complete resection of the tumor in the frontal lobe and incomplete resection of the tumor in the occipital lobe were performed. An MRI scan taken on postoperative day 6 showed an increase in the size of the lesion in the left occipital lobe and the right thalamus, and new small nodular lesions were seen in the frontal lobes. Therefore, whole-brain radiotherapy (WBRT) of 35 Gy with 17 fractions was initiated on postoperative day 9. Although no improvement was observed on the chest X-ray taken on day 30 of ICI administration (on day 5 of WBRT) (Fig. 2d), the chest X-ray taken on day 39 of ICI administration (2 weeks after WBRT initiation) showed an improved transparency of the left thorax (Fig. 2e), which we considered to be a response to pembrolizumab. Following this, we restarted pembrolizumab 72 days after the first administration.

The patient has received 36 cycles of pembrolizumab without any adverse events (Fig. 2f). He is visiting our



**Fig. 1** **a** Chest computed tomography (CT) at different planes taken before video-assisted thoracoscopic (VATS) biopsy. Arrowheads indicate a mass lesion adjacent to the aorta; **b** chest CT in the planes identical to those in **a** taken 12 days prior at the previous hospital; **c** combined photograph of intrathoracic finding taken during the VATS. A chest drain tube was placed. The dashed line indicates a combination of two intraoperative stills. *LUL* left upper lobe, *LLL* left lower lobe; **d** pathological image of the pleural nodule stained using hematoxylin–eosin (original magnification  $\times 200$ ). Arrowheads indicate acinar nests of tumor cells; **e** pathological image with immunohistochemical staining of PDL-1 (22C3) (original magnification  $\times 200$ )

outpatient clinic and conducting almost all activities of daily life after the diagnosis 30 months ago.

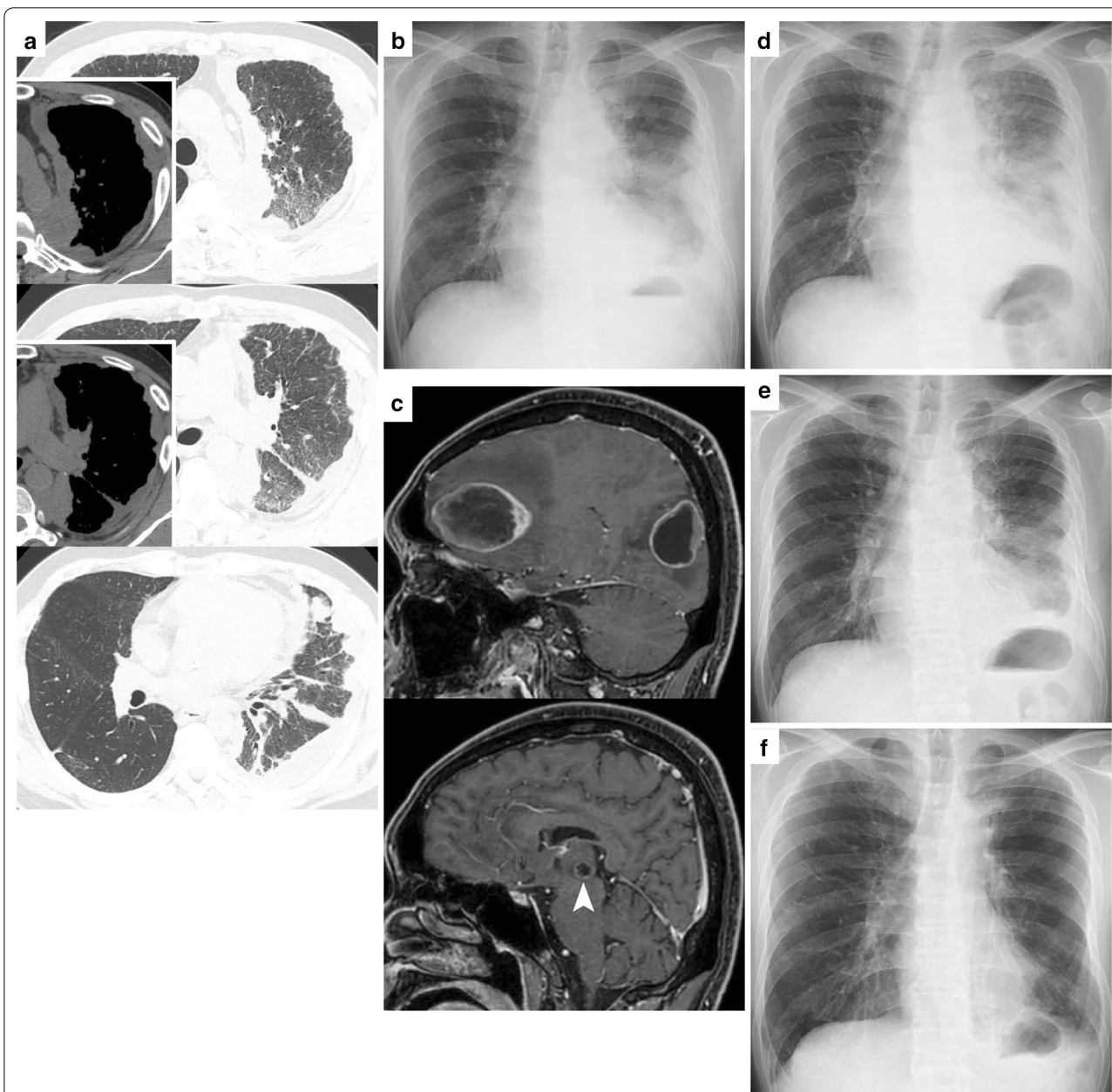
**Discussion and conclusions**

Herein, we reported the first detailed case of primary lung adenocarcinoma that arose from indium lung. This cancer had a very aggressive nature, which was indicated by a rapid deterioration after onset and by its treatment process. The carcinogenicity of indium in this patient was

further emphasized by the fact that he did not have a history of smoking.

We have clinically determined the lesion adjacent to the aorta that was intrapulmonary as the primary site. Although we could not confirm whether the lesion was intrapulmonary or extra-pulmonary during the VATS because of tight adhesions, it is reasonable to consider the largest lesion as the primary site. In addition, the immunohistochemical staining findings were consistent





**Fig. 2** **a** Chest computed tomography in the planes identical to those in Fig. 1 taken 38 days after the video-assisted thoracoscopy; **b** chest X-ray taken on the day before the first pembrolizumab administration; **c** enhanced brain magnetic resonance imaging of the sagittal plane shows metastatic brain tumors. The arrowhead in the lower panel indicates the lesion in the right thalamus; **d** chest X-ray taken on day 30 of pembrolizumab administration; **e** chest X-ray taken on day 39 of pembrolizumab administration; **f** chest X-ray taken after 30 cycles of pembrolizumab

with a pulmonary origin. We have finally diagnosed the patient with primary lung adenocarcinoma.

With regard to disease management, some clinicians may choose ICI as the first-line treatment. However, we selected a more conservative option (a regimen of carboplatin and nanoparticle albumin-bound paclitaxel) that had a lower reported incidence rate of

chemotherapy-related acute exacerbation of interstitial pneumonias [9]. This was due to the patient’s history of acute exacerbation of the indium lung that required steroid pulse therapy, which raised concerns about ICI-related pneumonitis/interstitial lung disease [7, 8]. Despite the aggressive nature of the tumor, the patient experienced the therapeutic effects and benefits of the

2-year long ICI treatment. Therefore, ICI administration could be an option even in patients with interstitial pneumonia-type indium lung.

Thus far, the patient has had a 28-year latency period from initial inhalation of indium. This period is comparable with that of asbestos for lung cancer and mesothelioma [10, 11]. A future increase in lung cancer cases in indium-exposed workers, who have substantially higher levels of sIn as seen in this case, is concerning [12].

In conclusion, we presented here the first detailed case of aggressive lung cancer that originated from indium lung; the patient benefited from a 2-year long pembrolizumab administration as second-line therapy. Industrial physicians in charge of managing indium workers and doctors who treat patients with indium lung should consider the possibility of lung cancer development.

#### Abbreviations

VATS: Video-assisted thoracoscopy; sIn: Serum indium levels; CT: Computed tomography; TTF-1: Thyroid transcription factor 1; FDG-PET: Fluorodeoxyglucose positron emission tomography; MRI: Magnetic resonance imaging; ICI: Immune checkpoint inhibitor; WBRT: Whole-brain radiotherapy.

#### Acknowledgements

Information regarding this case was also described partially in a reference authored by Chonan T (Tohoku J Exp Med 2019; 248:143–50). We would like to thank Editage ([www.editage.jp](http://www.editage.jp)) for English language editing.

#### Authors' contributions

YSek and HI wrote the original draft. SU, KK, and HI performed the video-assisted thoracoscopy. TN treated the patient at the outpatient clinic. AA and TC diagnosed and followed up the indium lung. AS performed the pathological examinations. YK performed the brain surgery. YSat comprehensively supervised this case report. All authors read and approved the final manuscript.

#### Funding:

None.

#### Availability of data and materials

All data supporting the conclusions of this report are included within the article.

#### Declarations

#### Ethics approval and consent to participate

Not applicable.

#### Consent for publication

Written informed consent was obtained from the patient for publication of this case report and accompanying images. A copy of the written consent is available for review by the Editor of this journal.

#### Competing interests

The authors declare that they have no competing interests.

#### Author details

<sup>1</sup> Department of Thoracic Surgery, Faculty of Medicine, Hitachi General Hospital, University of Tsukuba, Hitachi Medical Education and Research Center, 2-1-1 Jyounan, Hitachi, Ibaraki 317-0077, Japan. <sup>2</sup> Department of Thoracic Surgery, University of Tsukuba, 1-1-1 Tennodai, Tsukuba, Ibaraki 305-8575, Japan. <sup>3</sup> Hitachi Medical Education and Research Center, Faculty of Medicine, University of Tsukuba, 2-1-1 Jyounan, Hitachi, Ibaraki 317-0077, Japan. <sup>4</sup> Department of Respiratory Medicine, Hitachi General Hospital, 2-1-1 Jyounan, Hitachi, Ibaraki 317-0077, Japan. <sup>5</sup> Department of Medicine, Nikko Memorial Hospital, Hitachi, Ibaraki 317-0064, Japan. <sup>6</sup> Department of Pathology, Hitachi General Hospital, 2-1-1 Jyounan, Hitachi, Ibaraki 317-0077, Japan. <sup>7</sup> Department of Neurosurgery, Hitachi General Hospital, 2-1-1 Jyounan, Hitachi, Ibaraki 317-0077, Japan.

Received: 20 October 2020 Accepted: 22 March 2021

Published online: 31 March 2021

#### References

- Chonan T, Amata A, Kawabata Y, Omae K. Indium lung: discovery, pathophysiology and prevention. *Tohoku J Exp Med*. 2019;248:143–50.
- Cummings KJ, Nakano M, Omae K, Takeuchi K, Chonan T, Xiao YL, et al. Indium lung disease. *Chest*. 2012;141:1512–21.
- Nagano K, Nishizawa T, Umeda Y, Kasai T, Noguchi T, Gotoh K, et al. Inhalation carcinogenicity and chronic toxicity of indium-tin oxide in rats and mice. *J Occup Health*. 2011;53:175–87.
- Nakano M, Omae K, Tanaka A, Hirata M. Possibility of lung cancer risk in indium-exposed workers: an 11-year multicenter cohort study. *J Occup Health*. 2019;61:251–6.
- Taguchi O, Chonan T. Three cases of indium lung. *J Jpn Respir Soc*. 2006;44:532–6 ((in Japanese)).
- Amata A, Chonan T, Yabuuchi Y, Ichimura H, Nawa T, Kawabata Y. A case of lung cancer in a patient with indium lung disease. *Ann Jpn Respir Soc*. 2019;8:158–62 ((in Japanese)).
- Cho JY, Kim J, Lee JS, Kim YJ, Kim SH, Lee YJ, et al. Characteristics, incidence, and risk factors of immune checkpoint inhibitor-related pneumonitis in patients with non-small cell lung cancer. *Lung Cancer*. 2018;125:150–6.
- Nakanishi Y, Masuda T, Yamaguchi K, Sakamoto S, Horimasu Y, Nakashima T, et al. Pre-existing interstitial lung abnormalities are risk factors for immune checkpoint inhibitor-induced interstitial lung disease in non-small cell lung cancer. *Respir Investig*. 2019;57:451–9.
- Minegishi Y, Gemma A, Homma S, Kishi K, Azuma A, Ogura T, et al. Acute exacerbation of idiopathic interstitial pneumonias related to chemotherapy for lung cancer: nationwide surveillance in Japan. *ERJ Open Res*. 2020. <https://doi.org/10.1183/23120541.00184-2019>.
- Frost G. The latency period of mesothelioma among a cohort of British asbestos workers (1978–2005). *Br J Cancer*. 2013;109:1965–73.
- Kishimoto T, Gemba K, Fujimoto N, Onishi K, Usami I, Mizuhashi K, et al. Clinical study of asbestos-related lung cancer in Japan with special reference to occupational history. *Cancer Sci*. 2010;101:1194–8.
- Amata A, Chonan T, Omae K, Nodera H, Terada J, Tatsumi K. High levels of indium exposure relate to progressive emphysematous changes: A 9-year longitudinal surveillance of indium workers. *Thorax*. 2015;70:1040–6.

#### Publisher's Note

Springer Nature remains neutral with regard to jurisdictional claims in published maps and institutional affiliations.